

MIDWEST SURVEYS
 LOGGING - PERFORATING - CONSULTING SERVICES
 P.O. Box 88, Osawatomie, KS 68084
 913 / 755 - 2128

GAMMA RAY / NEUTRON / CCL

File No.

Company **Colt Energy, Inc.**

Well **Pendley No -18**

County **Woodson**

State **Kansas**

Location **2171' FSU & 952' FEL**

Other Services

Perforate

Sec. 22 Twp. 28S Rge. 14E

Permanent Datum

Log Measured From

Drilling Measured From

Date

Run Number

Depth Driller

Bottom Logged Interval

Top Log Interval

Fluid Level

Type Fluid

Density / Viscosity

Salinity - PPM Cl

Max Recorded Temp

Estimated Cement Top

Equipment No.

Location

Recorded By

Witnessed By

BOREHOLE RECORD

TO

FROM

ONE

TWO

SIZE

WGT

WATER

SET

AI

TO

FROM

1382.30

1385.30

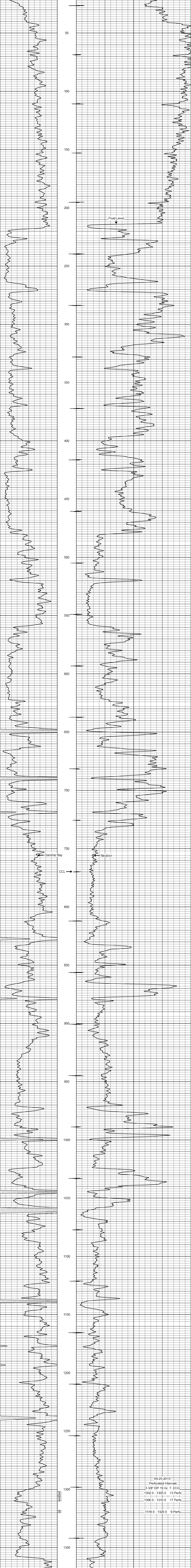
<<< Fold Here >>>

All interpretations are opinions based on inferences from electrical or other measurements and we cannot and do not guarantee the accuracy or correctness of any interpretation, and we shall not, except in the case of gross or willful negligence on our part, be liable or responsible for any loss, costs, damages, or expenses incurred or sustained by anyone resulting from any interpretation made by any of our offices, agents or employees. These interpretations are also subject to our general terms and conditions set out in our current Price Schedule.

Comments

Drilling Contractor :
 Bar Drilling, LLC.

Database File: pendley 18.db
 Dataset Pathname: pass1
 Presentation Format: gr-n-ccl
 Dataset Creation: Tue Sep 22 12:59:19 2015 by Log SCH 111116
 Charted by: Depth in Feet scaled 1:240



09-25-2015
 Perforated Intervals
 3 3/8" DP 19 Gr. T. ECG
 1302.0 - 1305.0 13 Perfs
 1306.0 - 1310.0 17 Perfs
 1318.0 - 1320.0 9 Perfs