



MICRO LOG

Company BLACK STONE PETROLEUM, LLC
 Well SWOB #2
 Field OTIS-ALBERT
 County RUSH
 State KANSAS

Company BLACK STONE PETROLEUM, LLC
 Well SWOB #2
 Field OTIS-ALBERT
 County RUSH State KANSAS

Location: API # : 15-165-22145-00-00
 1095' FSL & 970' FWL
 SEC 26 TWP 18S RGE 16W
 Permanent Datum GROUND LEVEL Elevation 1974'
 Log Measured From KELLY BUSHING 9' A.G.L.
 Drilling Measured From KELLY BUSHING
 Other Services CDL/CNL DIL/SONIC
 Elevation K.B. 1983 D.F. 1981 G.L. 1974

Date	06/25/17
Run Number	TWO
Depth Driller	3674
Depth Logger	3736
Bottom Logged Interval	3710
Top Log Interval	1500
Casing Driller	10 3/4" @ 1080
Casing Logger	1080
Bit Size	8 3/4"
Type Fluid in Hole	CHEMICAL MUD
Density / Viscosity	8.6/48
pH / Fluid Loss	11.4/8.4
Source of Sample	FLOWLINE
Rm @ Meas. Temp	.50@72
Rmt @ Meas. Temp	.38@72
Rmc @ Meas. Temp	.60@72
Source of Rmf / Rmc	MEASURED
Rm @ BHT	.32@112
Time Circulation Stopped	2 HOURS
Time Logger on Bottom	///
Maximum Recorded Temperature	112F
Equipment Number	4010
Location	HAYS, KANSAS
Recorded By	GUS PFANENSTIEL
Witnessed By	CHRIS LEIKER

<<< Fold Here >>>

All interpretations are opinions based on inferences from electrical or other measurements and we cannot and do not guarantee the accuracy or correctness of any interpretation, and we shall not, except in the case of gross or willful negligence on our part, be liable or responsible for any loss, costs, damages, or expenses incurred or sustained by anyone resulting from any interpretation made by any of our officers, agents or employees. These interpretations are also subject to our general terms and conditions set out in our current Price Schedule.

Comments

THANK YOU FOR USING ELI WIRELINE, HAYS, KS. (785) 628-6395

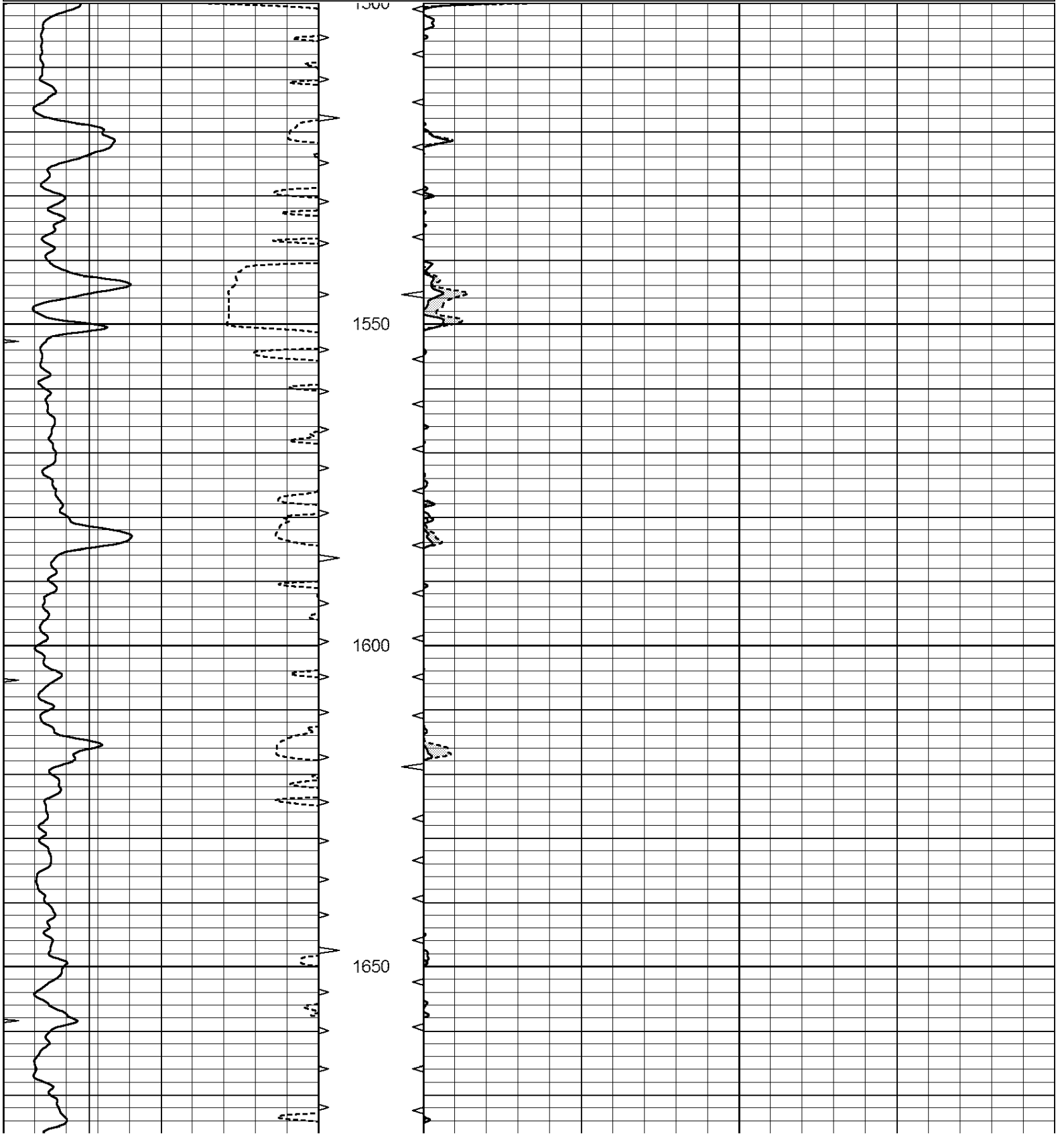
DIRECTIONS
 96 HIGHWAY OUT OF RUSH CENTER EAST TO 380 RD.
 SOUTH 3/4 MILE
 EAST INTO.

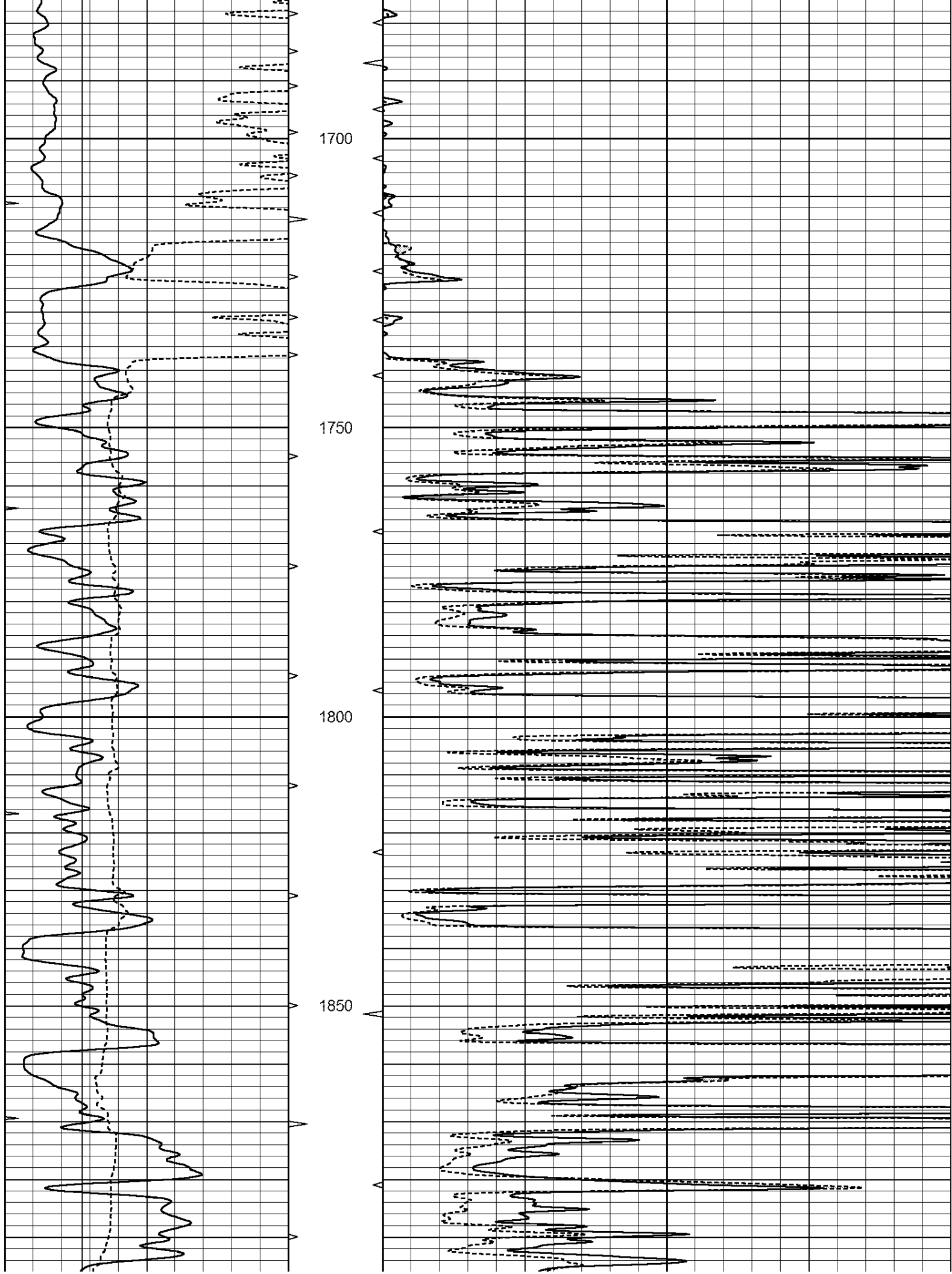


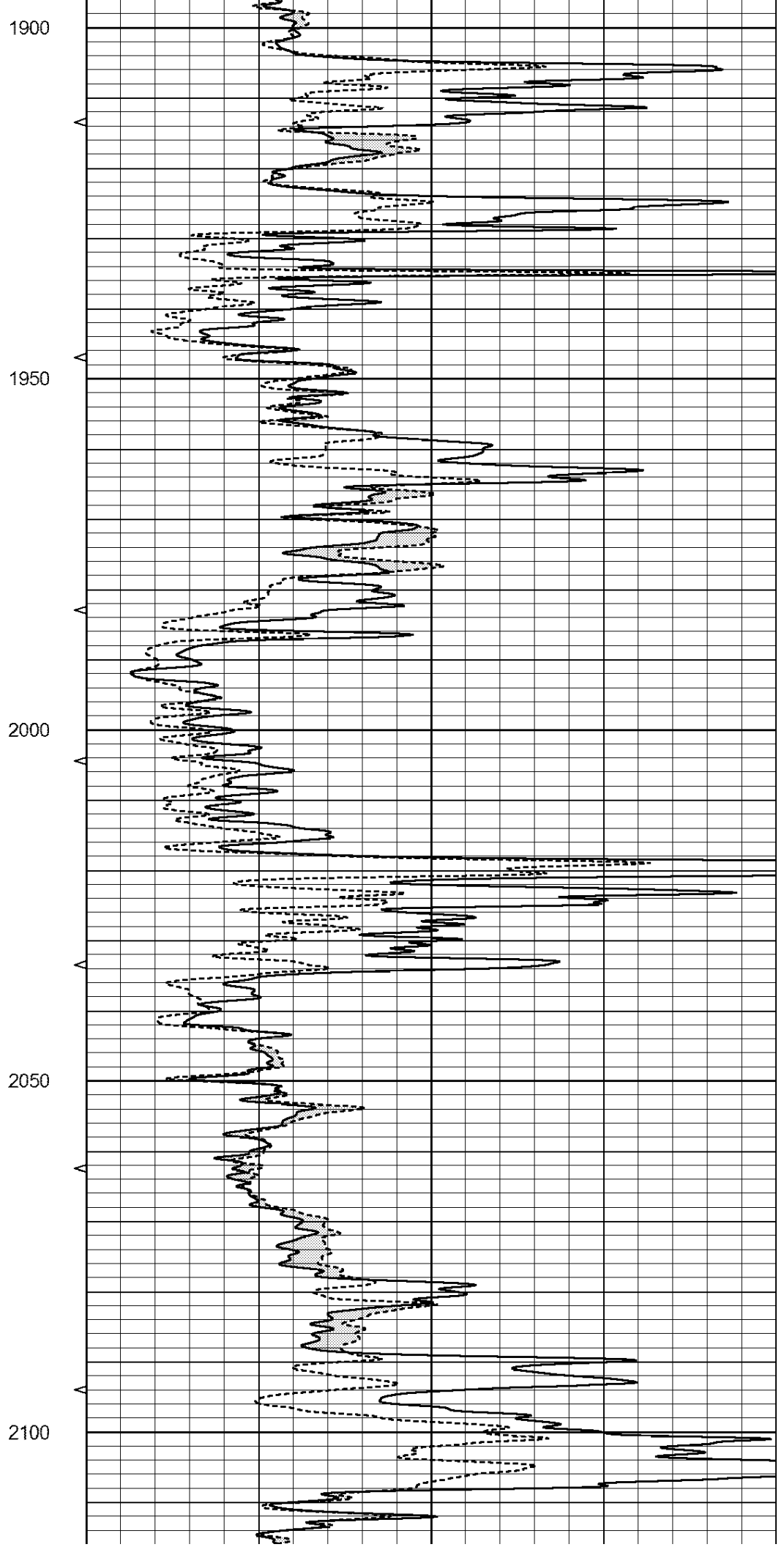
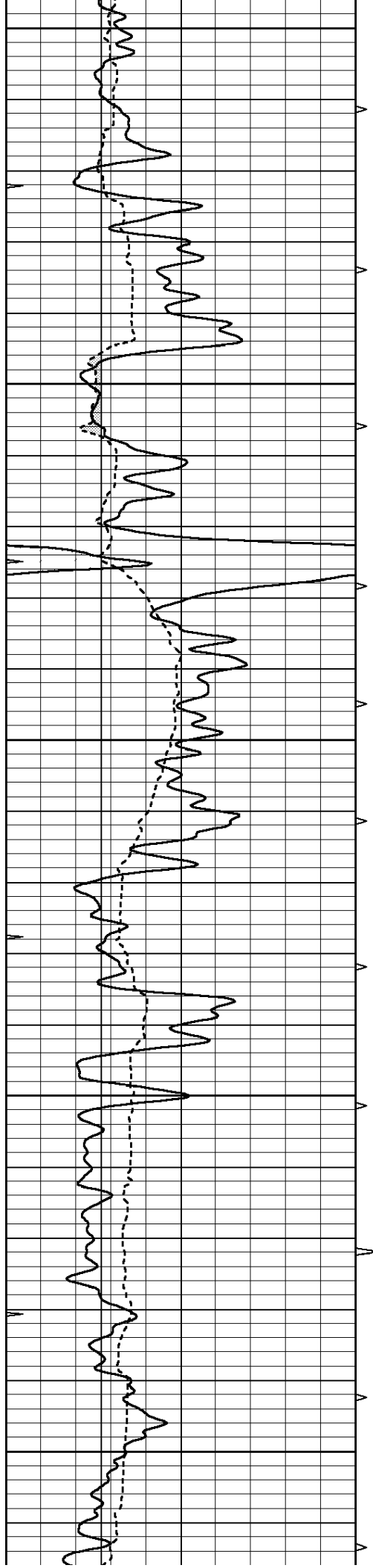
MAIN PASS

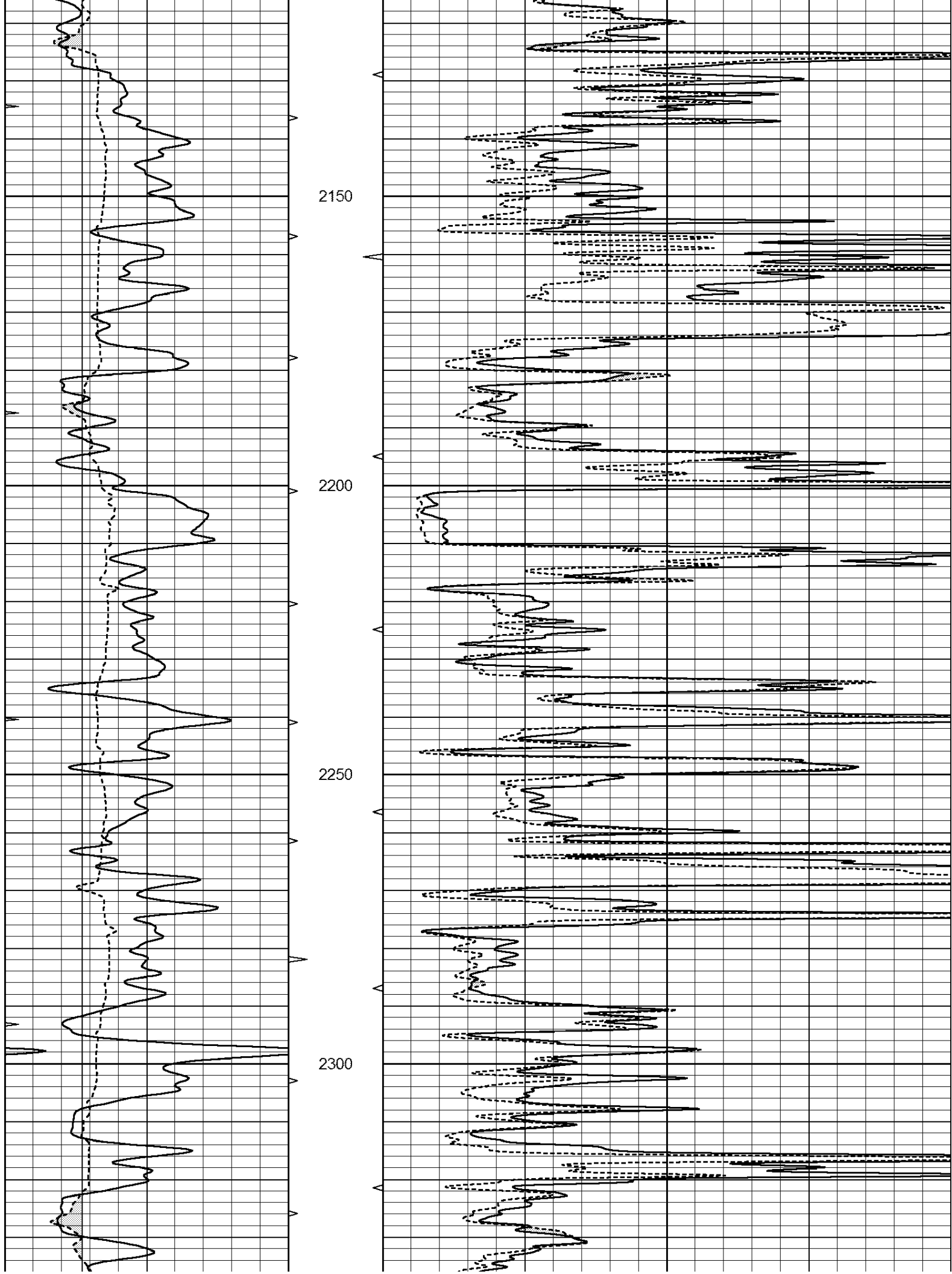
Database File: 1473ddn.db
 Dataset Pathname: pass5.1
 Presentation Format: _micro
 Dataset Creation: Sun Jun 25 12:12:22 2017 by Calc Open-Cased 090629
 Charted by: Depth in Feet scaled 1:240

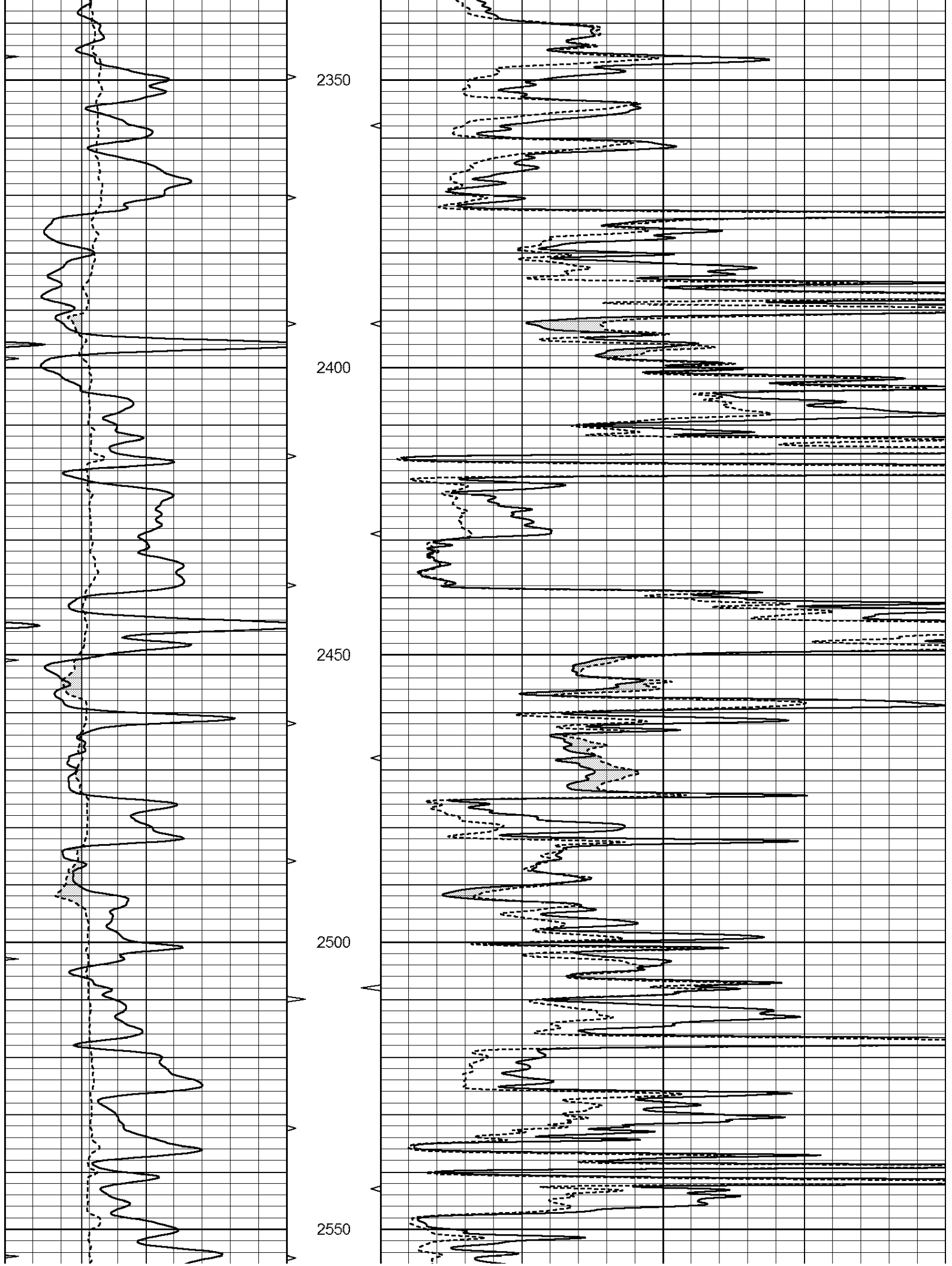
0	GAMMA RAY (GAPI)	150	ABHV	0	MEL1.5 (Ohm-m)	20
6	CALIPER (in)	16	10 (ft3)	0 0	MEL2.0 (Ohm-m)	20
0	MINMK	20	TBHV			
			0 (ft3)	10		

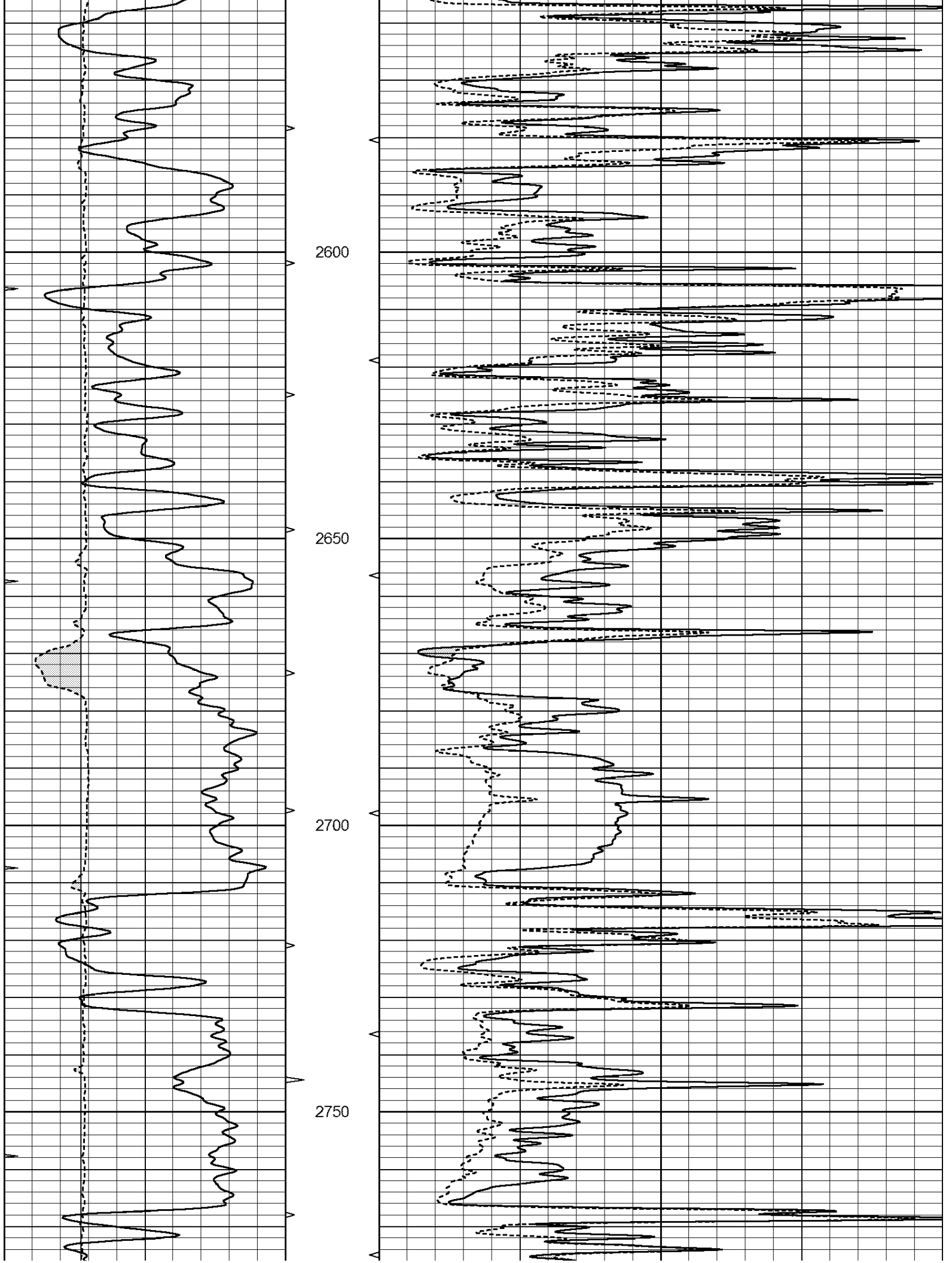


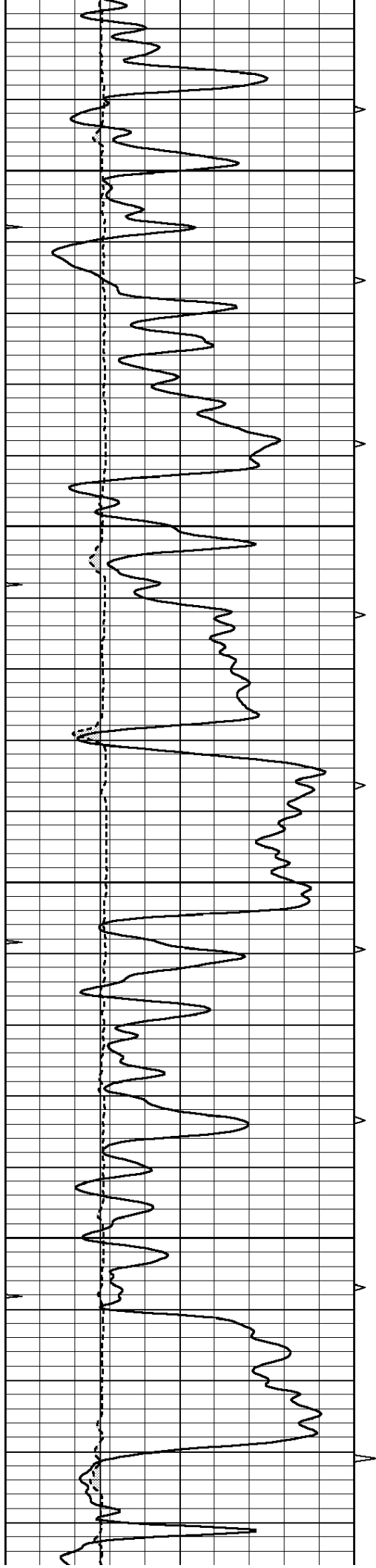










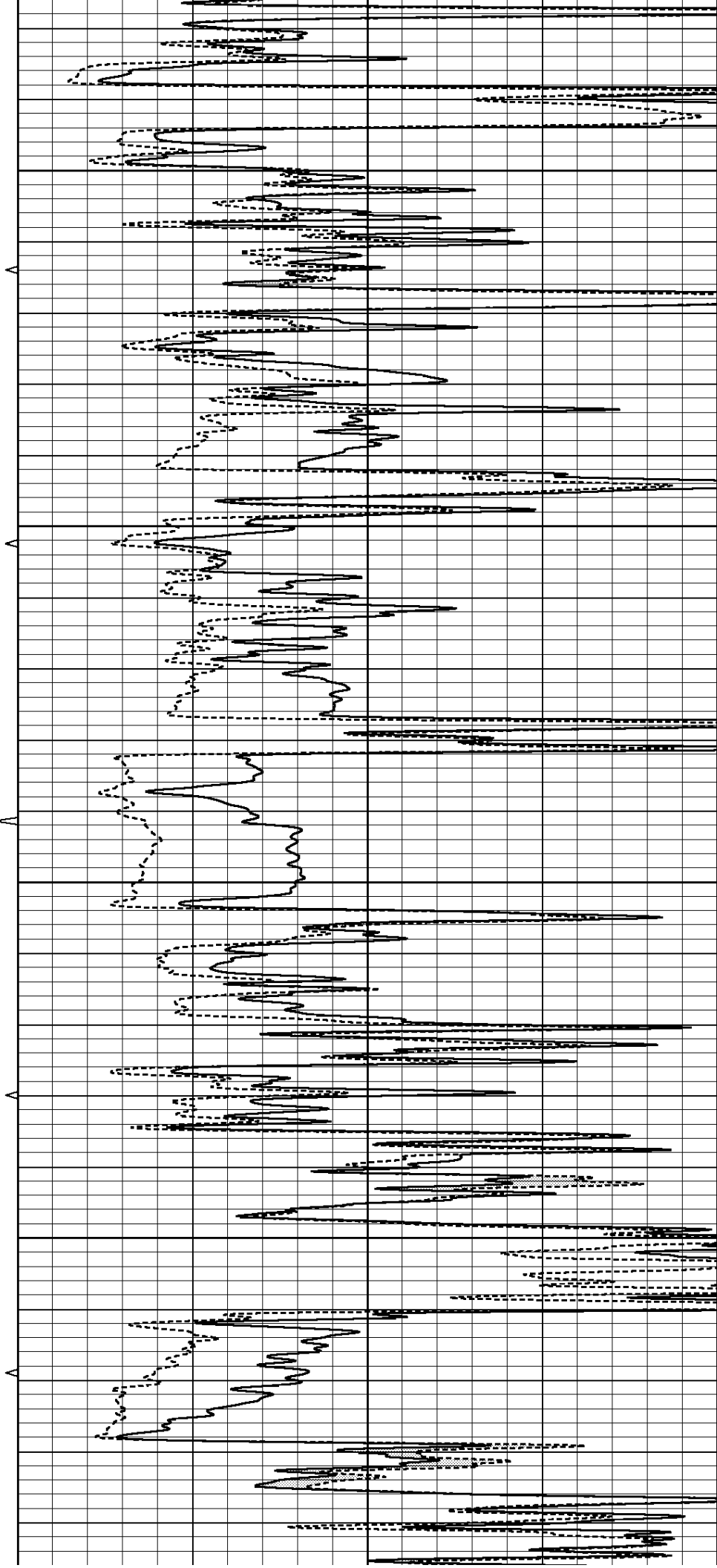


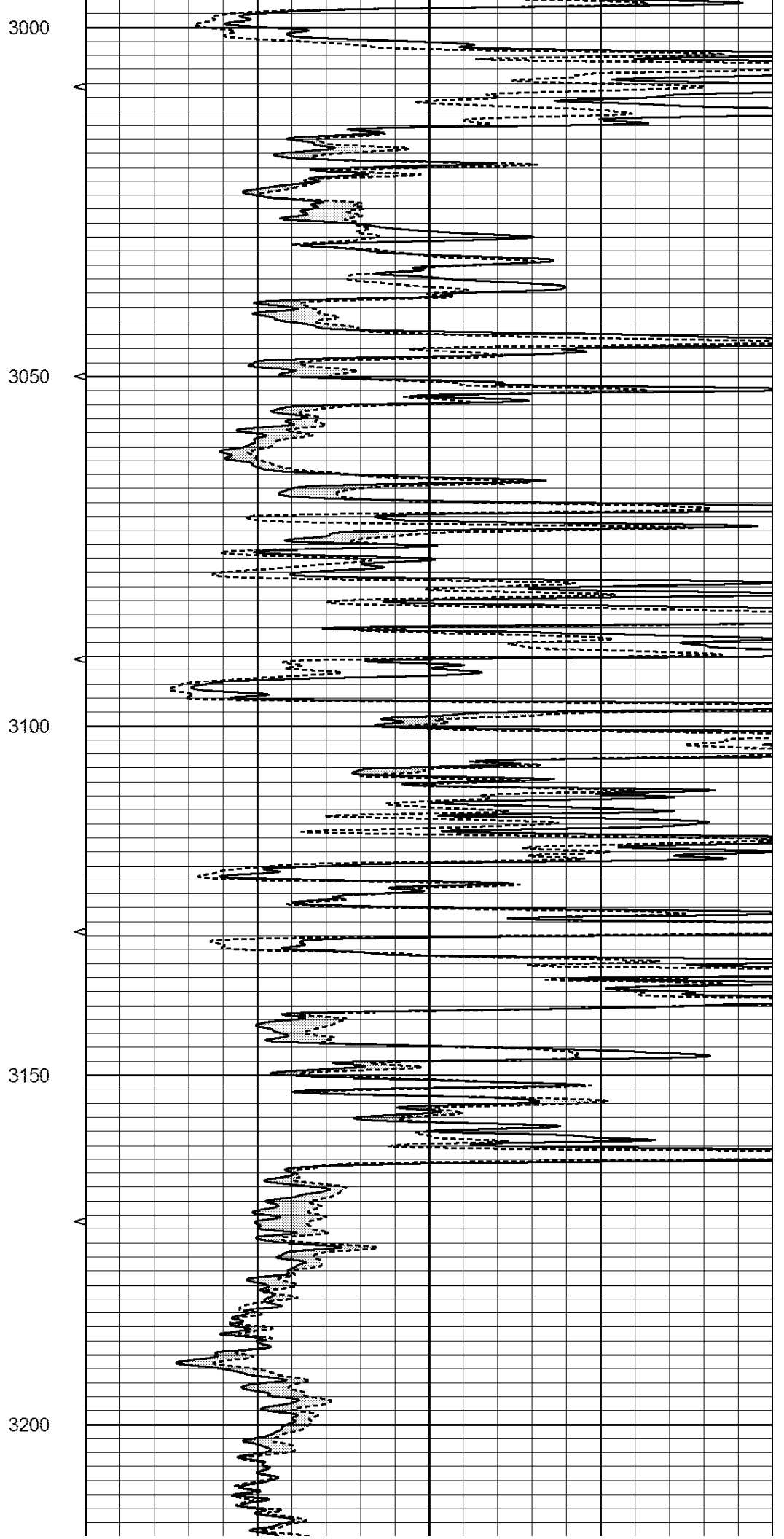
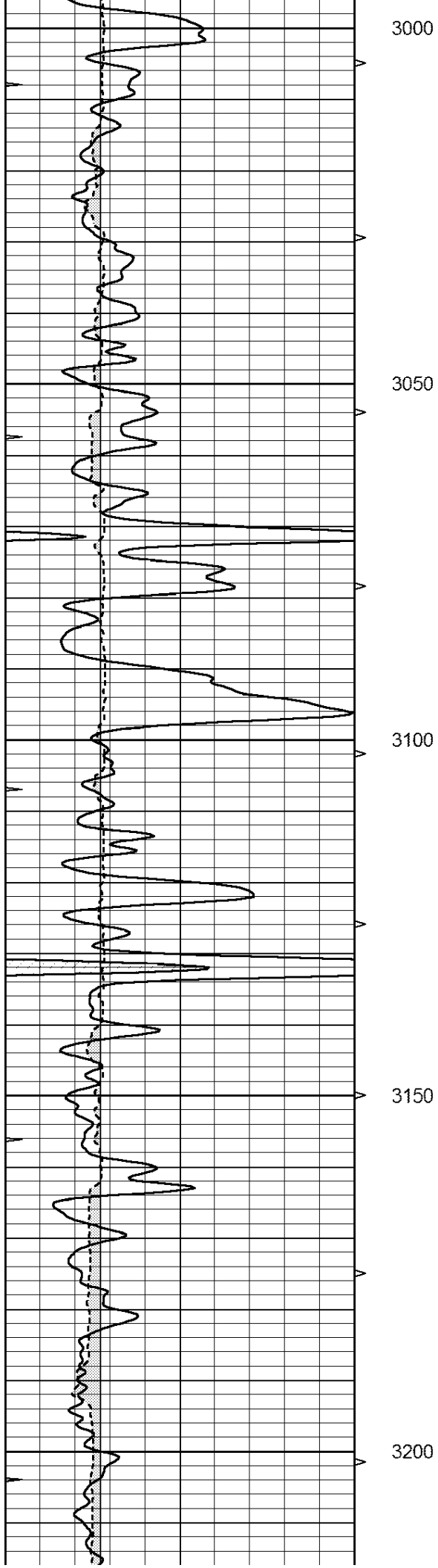
2800

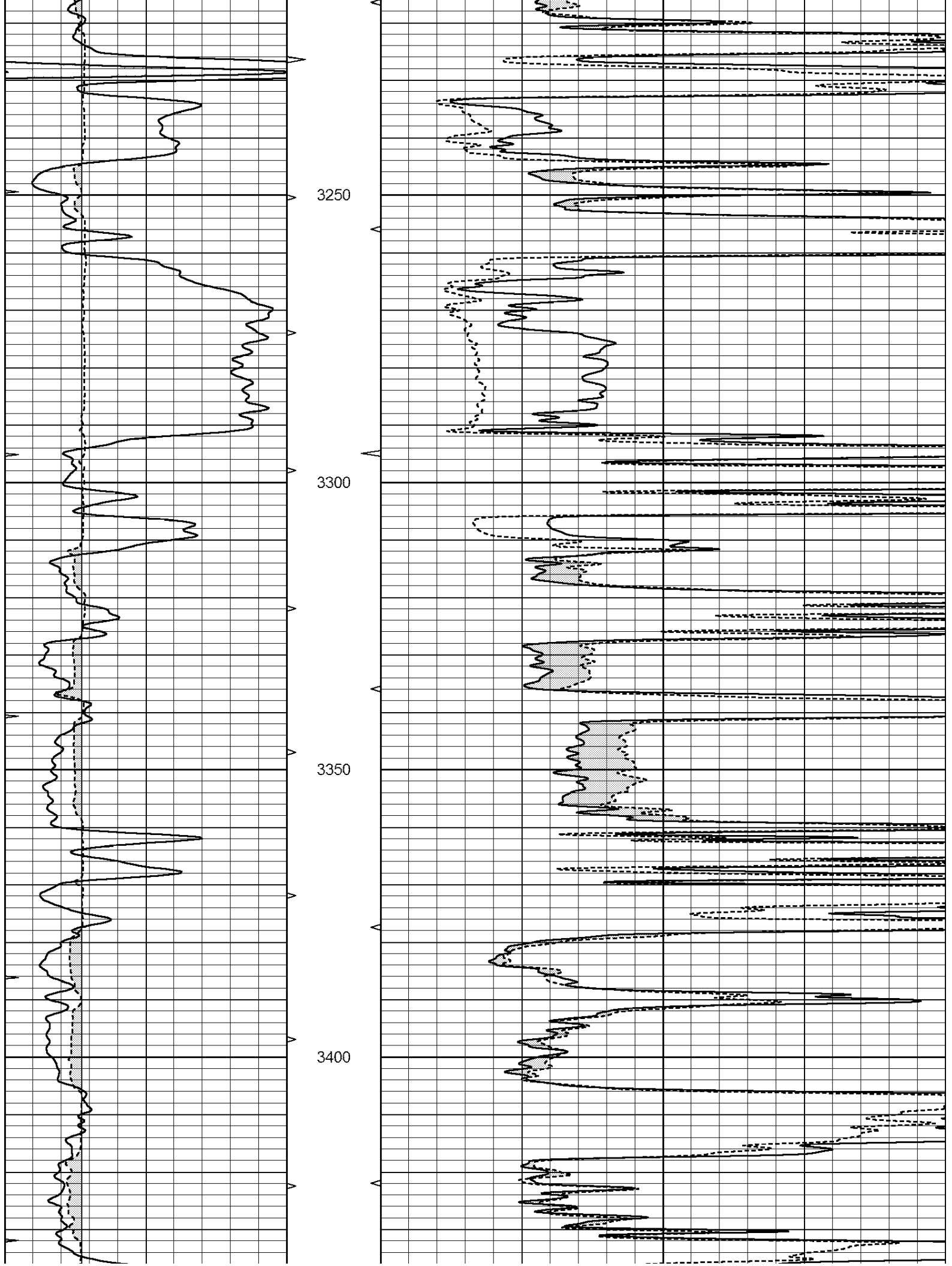
2850

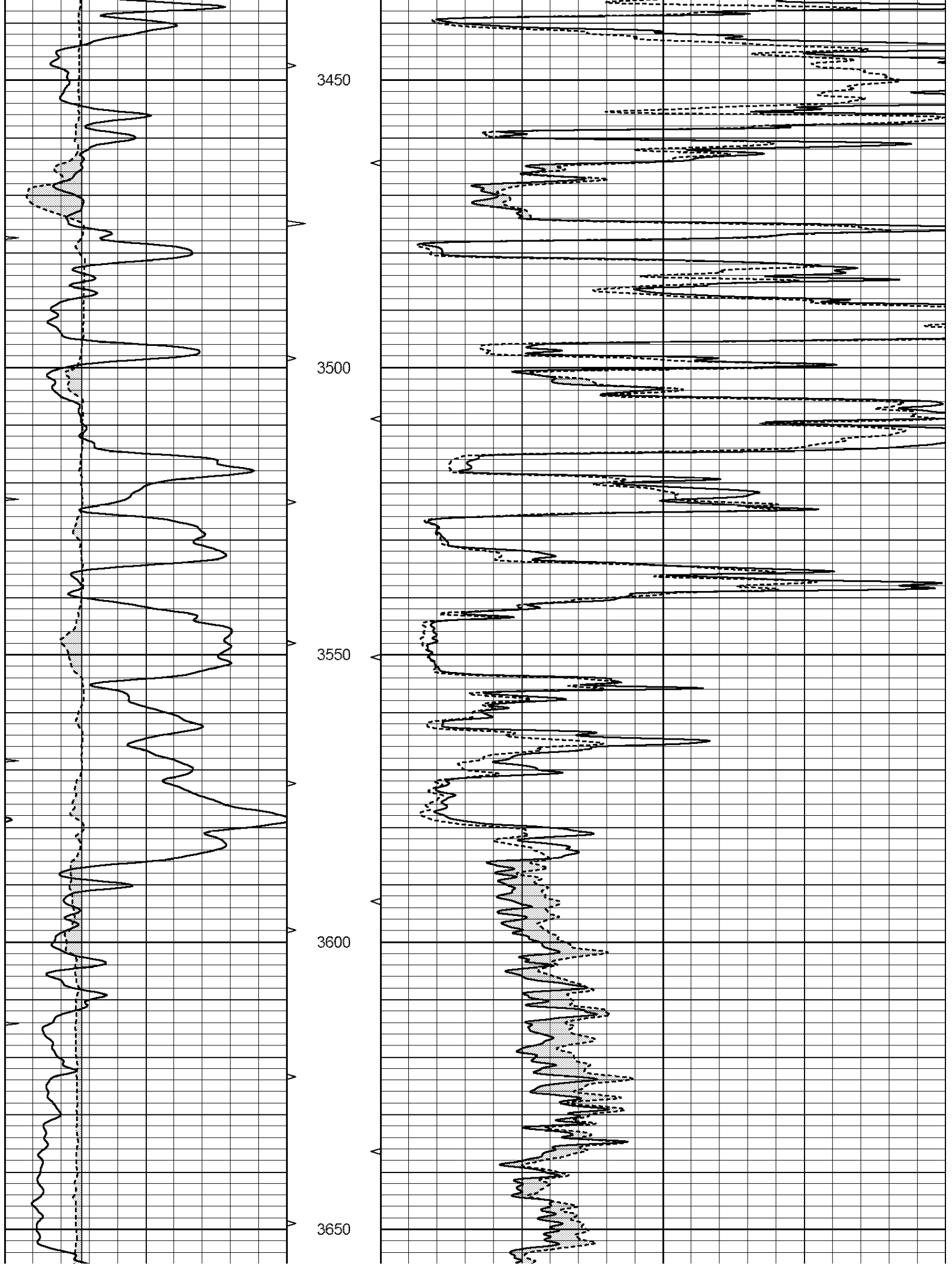
2900

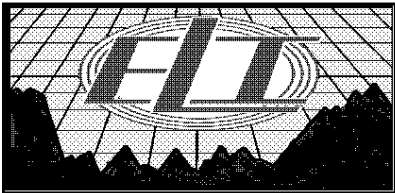
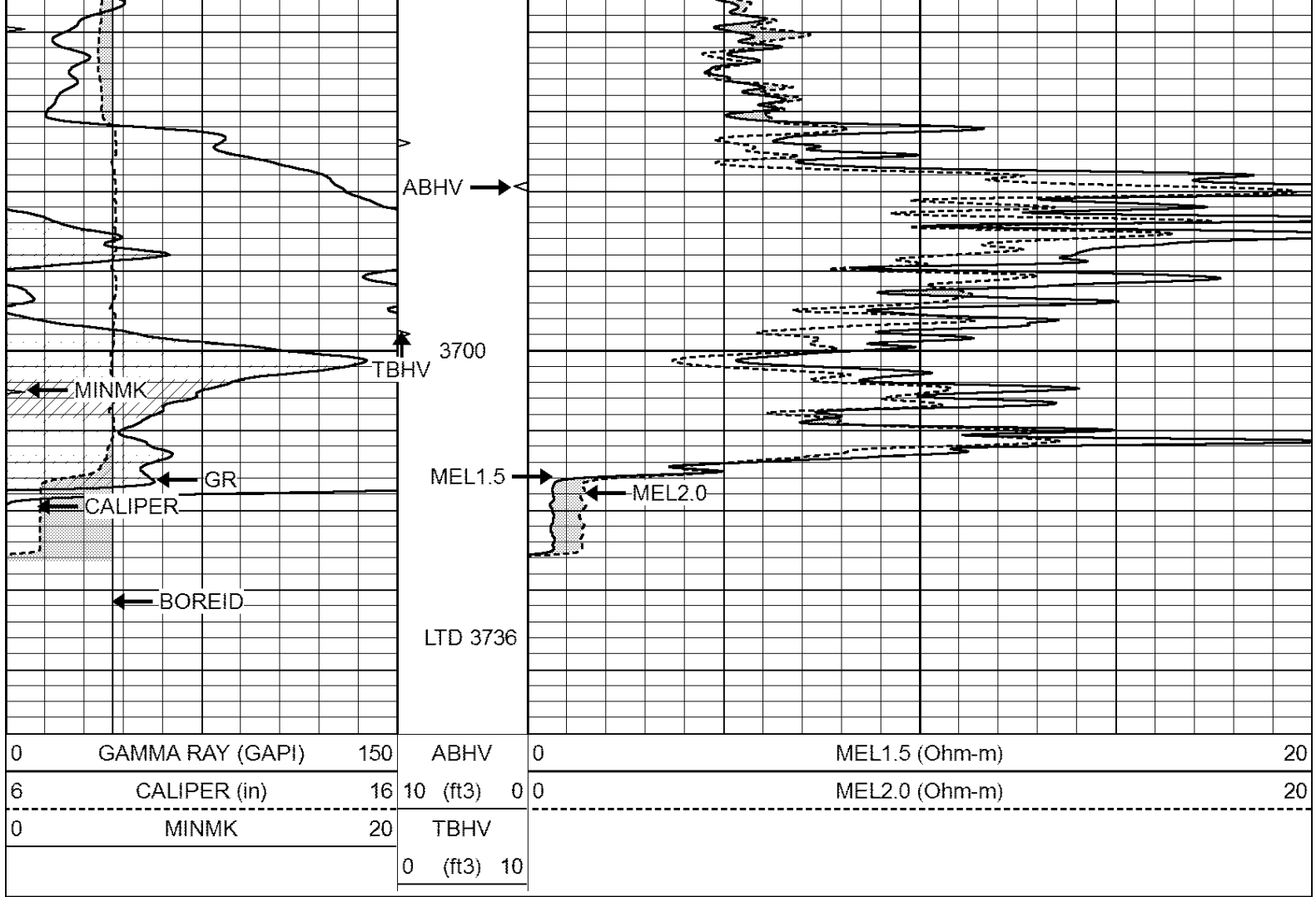
2950







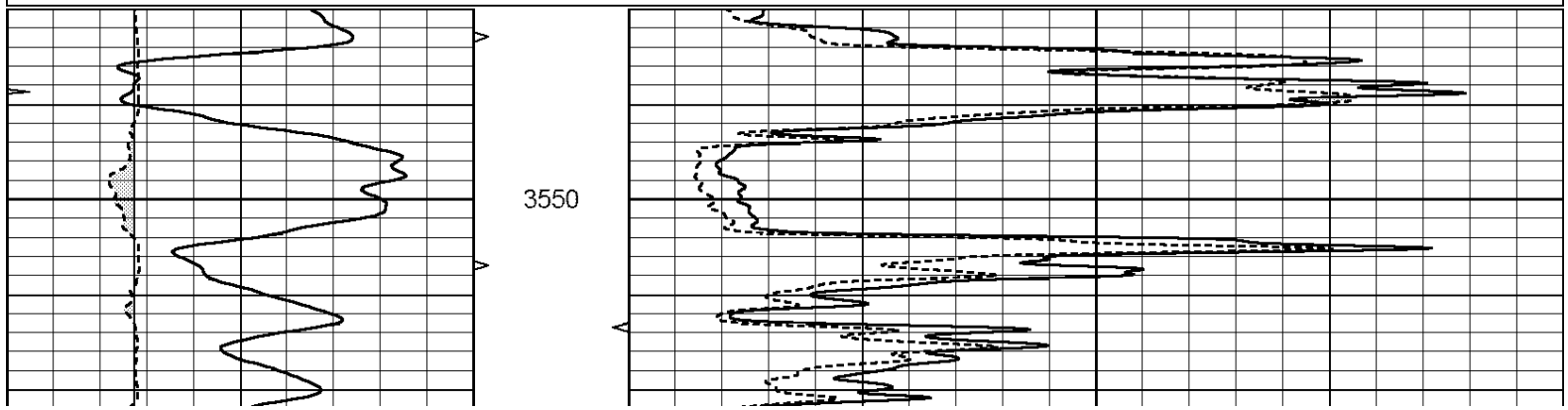


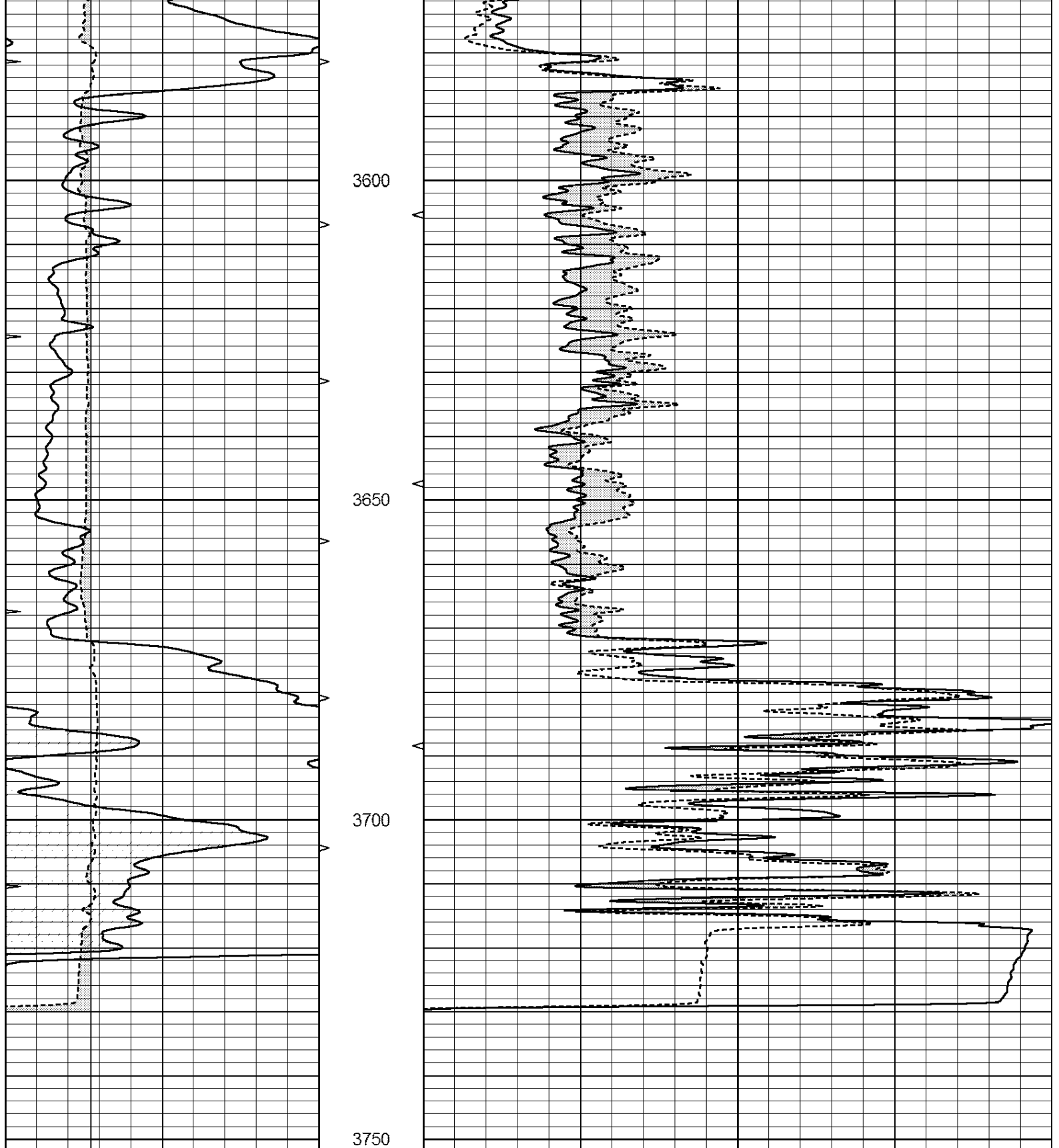


REPEAT SECTION

Database File: 1473ddn.db
 Dataset Pathname: pass4.1
 Presentation Format: _micro
 Dataset Creation: Sun Jun 25 12:02:42 2017 by Calc Open-Cased 090629
 Charted by: Depth in Feet scaled 1:240

0	GAMMA RAY (GAPI)	150	ABHV	0	MEL1.5 (Ohm-m)	20
6	CALIPER (in)	16	10 (ft3)	0 0	MEL2.0 (Ohm-m)	20
0	MINMK	20	TBHV			
			0 (ft3)	10		





0	GAMMA RAY (GAPI)	150	ABHV	0	MEL1.5 (Ohm-m)	20
6	CALIPER (in)	16	10 (ft) 0	0	MEL2.0 (Ohm-m)	20
0	MINMK	20	TBHV			
			0 (ft) 10			

Calibration Report

Database File: 1473ddn.db
 Dataset Pathname: pass4.1
 Dataset Creation: Sun Jun 25 12:02:42 2017 by Calc Open-Cased 090629

MICRO Calibration Report

Serial Number: MICRO6
 Tool Model: PROBE
 Performed: Mon Apr 10 10:24:59 2017

Caliper Calibration: Gain=3.960 Offset=4.751

	Low Cal	High Cal
References	7.000	14.000
Readings	0.555	2.323

1.5" Calibration: Gain=38.075 Offset=-0.200

	Low Cal	High Cal
References	0.000	20.000
Readings	0.004	1.196

2" Calibration: Gain=48.000 Offset=-1.000

	Low Cal	High Cal
References	0.000	20.000
Readings	0.006	0.913

Gamma Ray Calibration Report

Serial Number: GR2
 Tool Model: OPEN
 Performed: Wed Jun 07 21:43:13 2017

Calibrator Value: 1.0 GAPI

Background Reading:	0.0	cps
Calibrator Reading:	1.0	cps

Sensitivity: 0.3600 GAPI/cps