



# SONIC LOG

Company BLACK STONE PETROLEUM, LLC  
 Well SWOB #2  
 Field OTIS-ALBERT  
 County RUSH  
 State KANSAS

Company BLACK STONE PETROLEUM, LLC  
 Well SWOB #2  
 Field OTIS-ALBERT  
 County RUSH State KANSAS

Location: API # : 15-165-22145-00-00  
 1095' FSL & 970' FWL  
 SEC 26 TWP 18S RGE 16W  
 Permanent Datum GROUND LEVEL Elevation 1974'  
 Log Measured From KELLY BUSHING 9' A.G.L.  
 Drilling Measured From KELLY BUSHING  
 Other Services CDL/CNL DIL/MEL  
 Elevation K.B. 1983 D.F. 1981 G.L. 1974

Date	06/25/17
Run Number	TWO
Depth Driller	3674
Depth Logger	3736
Bottom Logged Interval	3728
Top Log Interval	1000
Casing Driller	10 3/4" @ 1080
Casing Logger	1080
Bit Size	8 3/4"
Type Fluid in Hole	CHEMICAL MUD
Density / Viscosity	8.6/48
pH / Fluid Loss	11.4/8.4
Source of Sample	FLOWLINE
Rm @ Meas. Temp	.50@72
Rmt @ Meas. Temp	.38@72
Rmc @ Meas. Temp	.60@72
Source of Rmf / Rmc	MEASURED
Rm @ BHT	.32@112
Time Circulation Stopped	2 HOURS
Time Logger on Bottom	///
Maximum Recorded Temperature	112F
Equipment Number	4010
Location	HAYS, KANSAS
Recorded By	GUS PFANENSTIEL
Witnessed By	CHRIS LEIKER

<<< Fold Here >>>

All interpretations are opinions based on inferences from electrical or other measurements and we cannot and do not guarantee the accuracy or correctness of any interpretation, and we shall not, except in the case of gross or willful negligence on our part, be liable or responsible for any loss, costs, damages, or expenses incurred or sustained by anyone resulting from any interpretation made by any of our officers, agents or employees. These interpretations are also subject to our general terms and conditions set out in our current Price Schedule.

### Comments

THANK YOU FOR USING ELI WIRELINE, HAYS, KS. (785) 628-6395

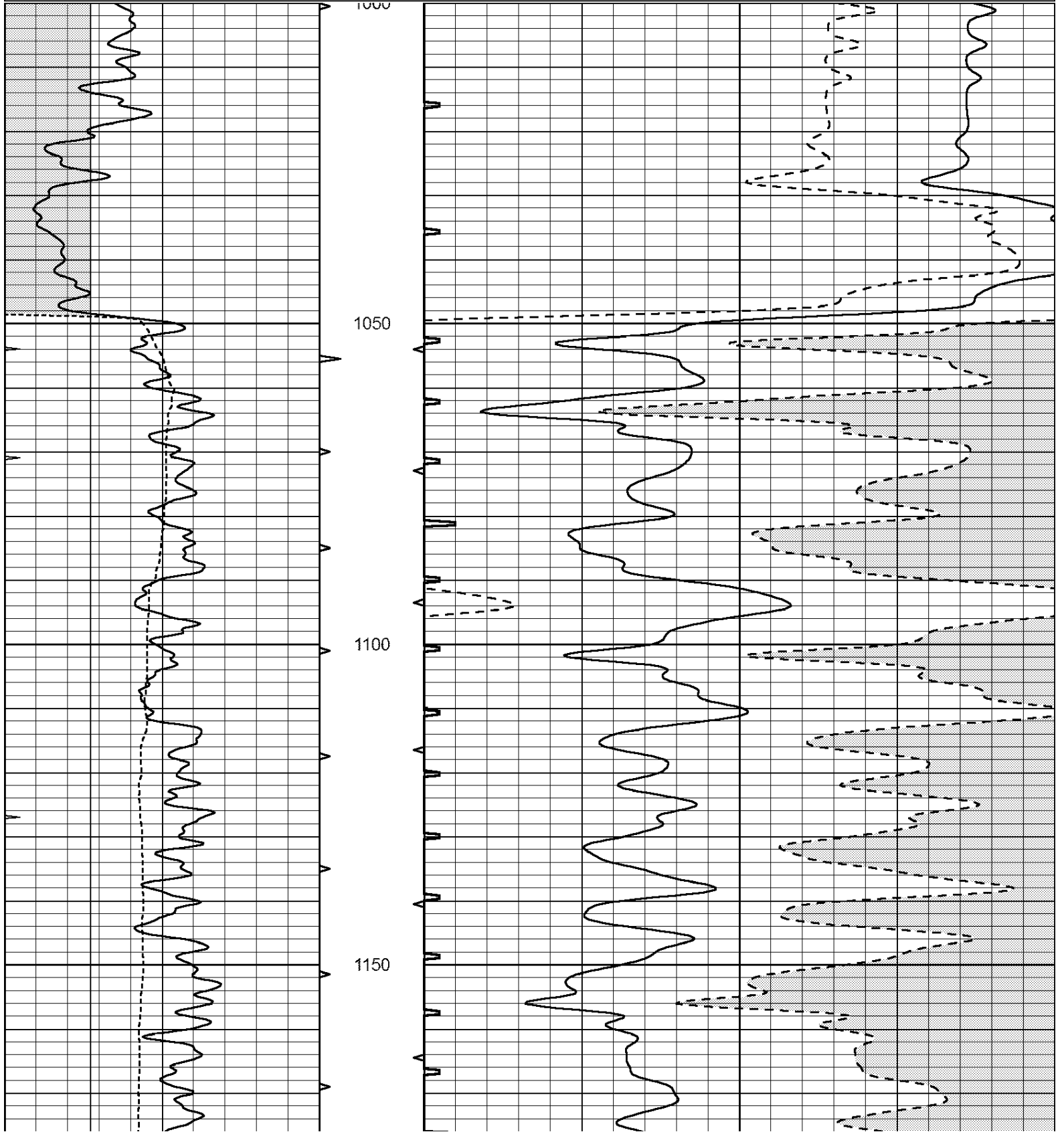
DIRECTIONS  
 96 HIGHWAY OUT OF RUSH CENTER EAST TO 380 RD.  
 SOUTH 3/4 MILE  
 EAST INTO.

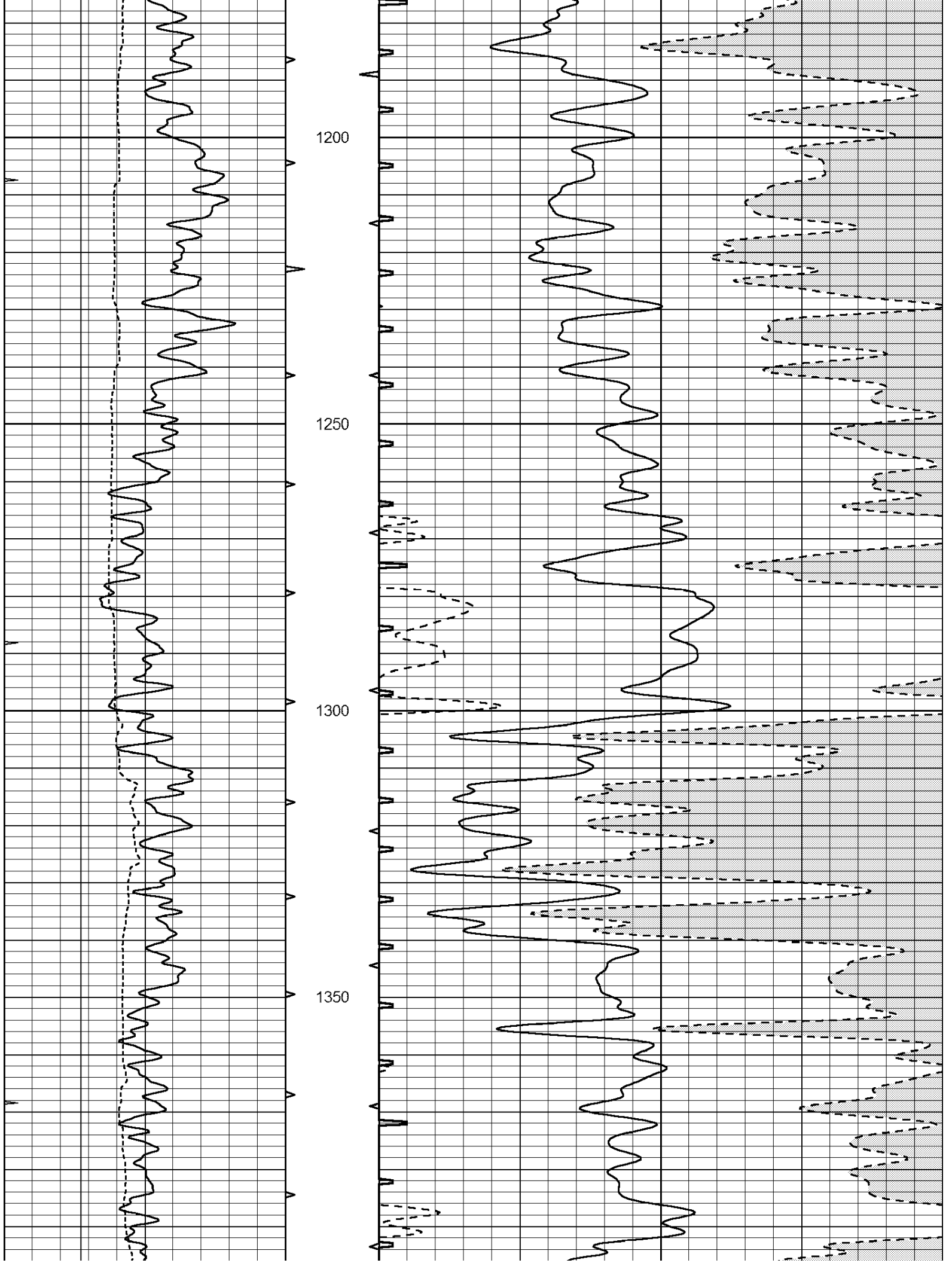


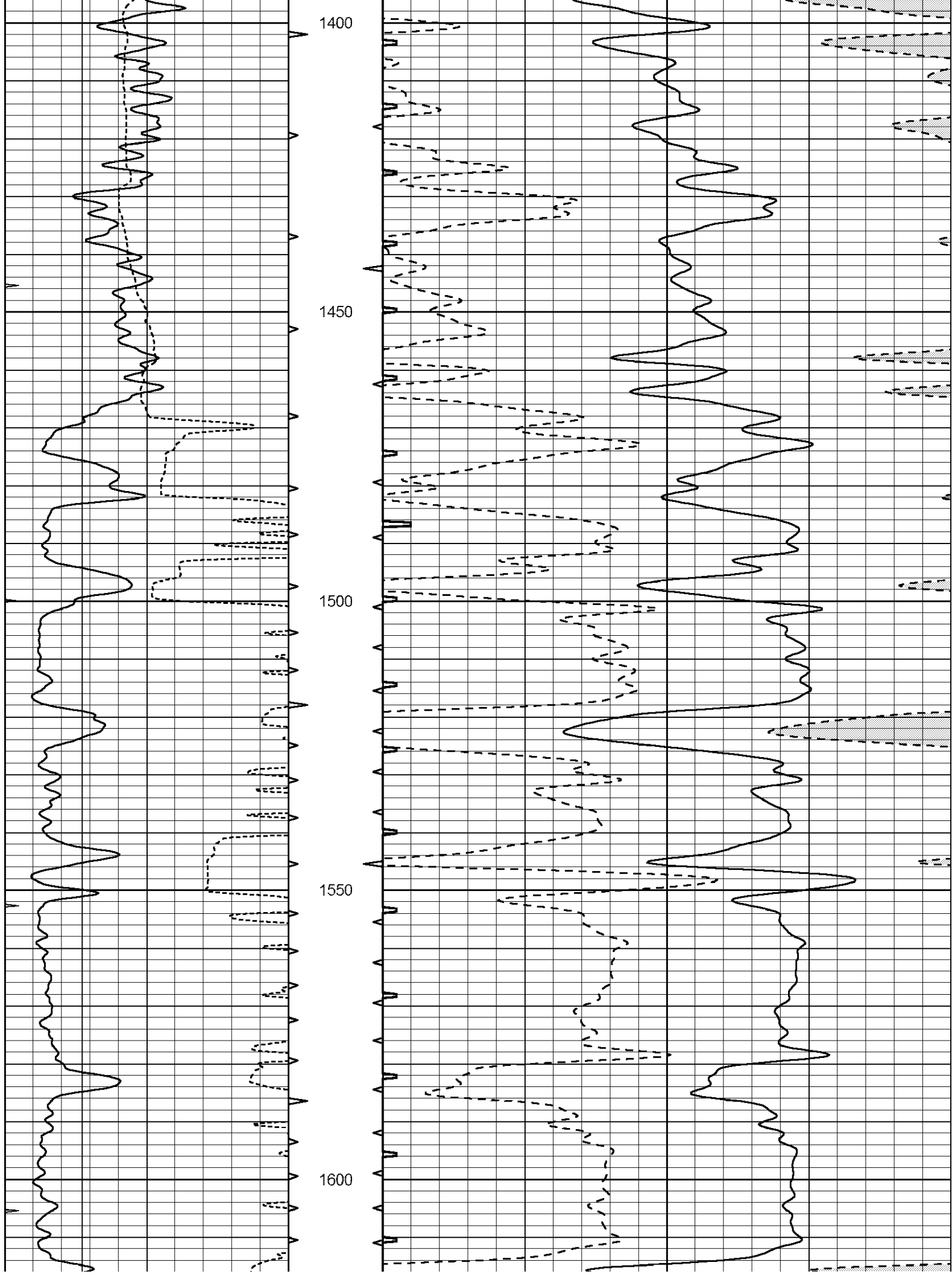
# MAIN PASS

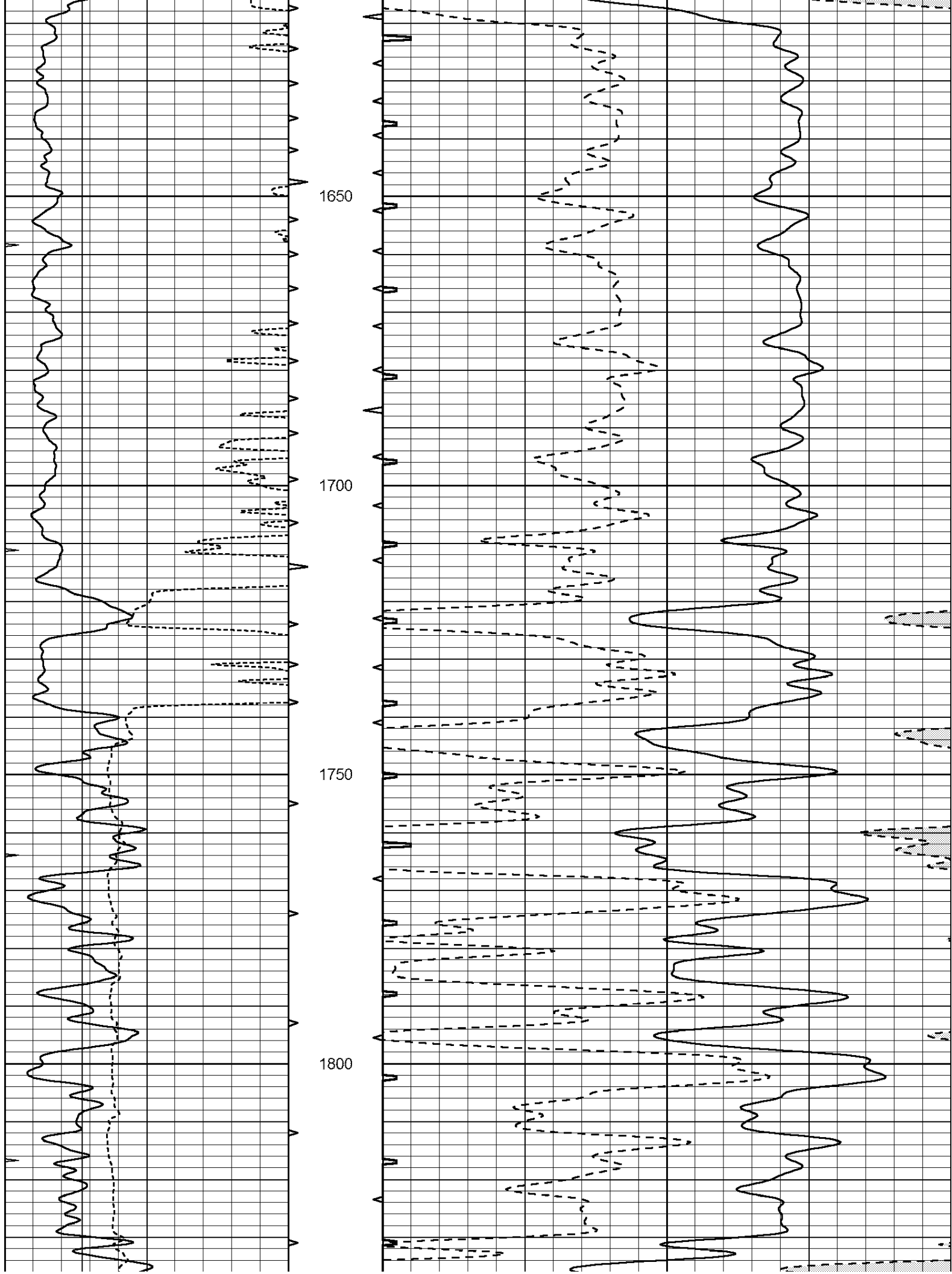
Database File: 1473ddn.db  
 Dataset Pathname: pass5.1  
 Presentation Format: \_slt  
 Dataset Creation: Sun Jun 25 12:12:22 2017 by Calc Open-Cased 090629  
 Charted by: Depth in Feet scaled 1:240

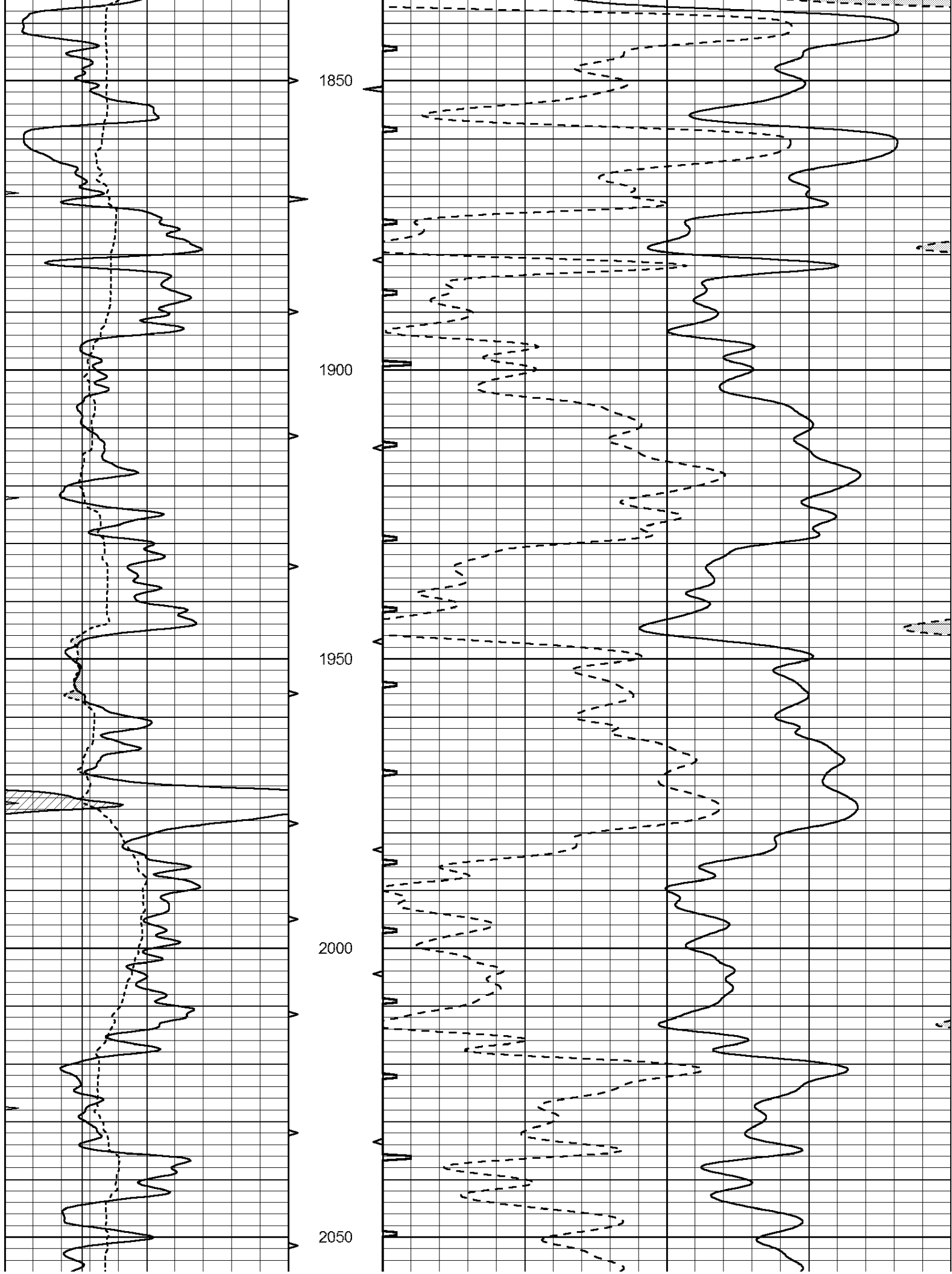
0	GAMMA RAY (GAPI)	150	ABHV	140	DELTA TIME (usec/ft)	40	
6	CALIPER (in)	16	10 (ft3)	0	30	SONIC POROSITY (pu)	-10
0	MINMK	20	TBHV	0	ITT (msec)	20	
			0 (ft3)	10			

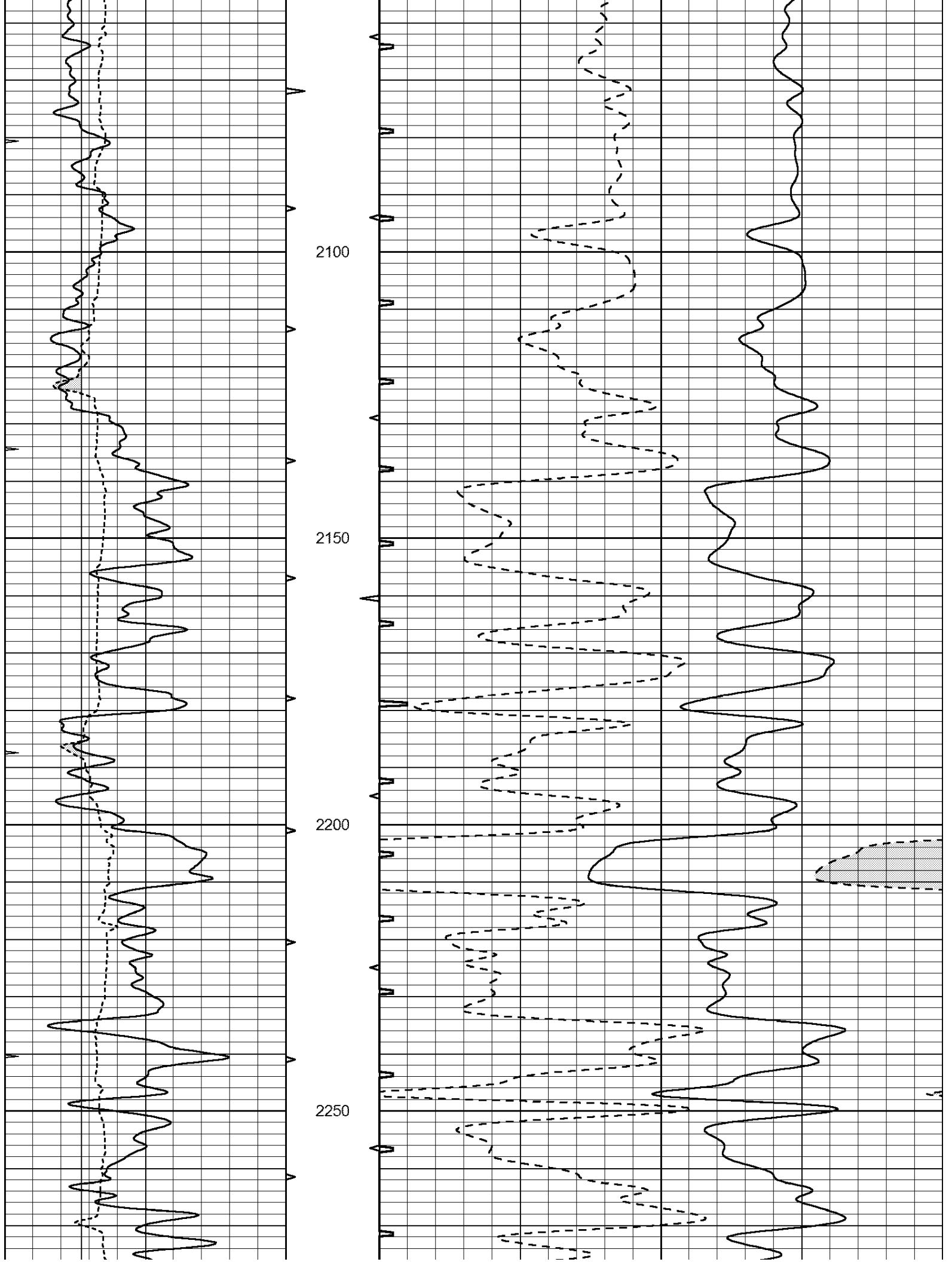


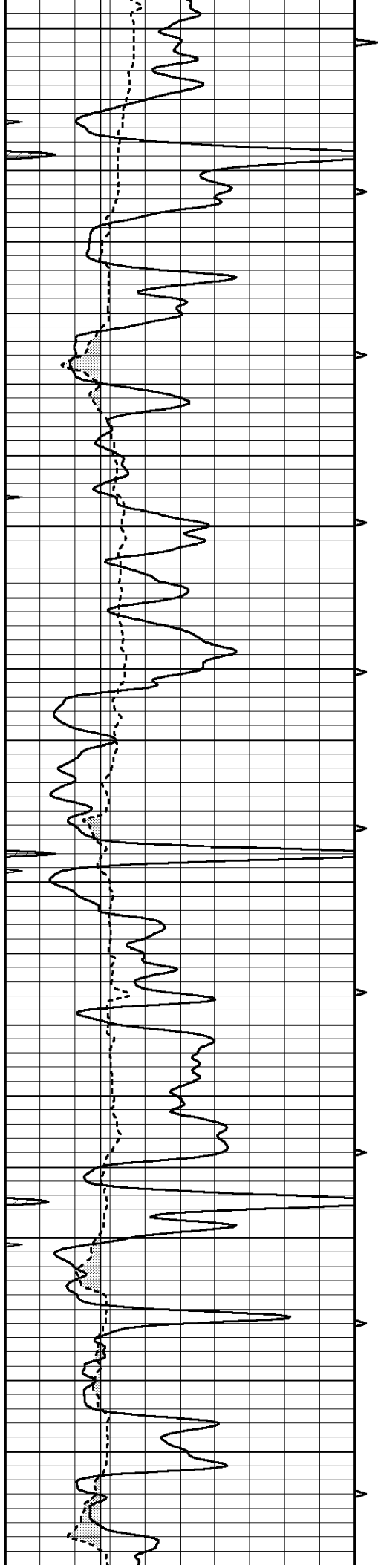










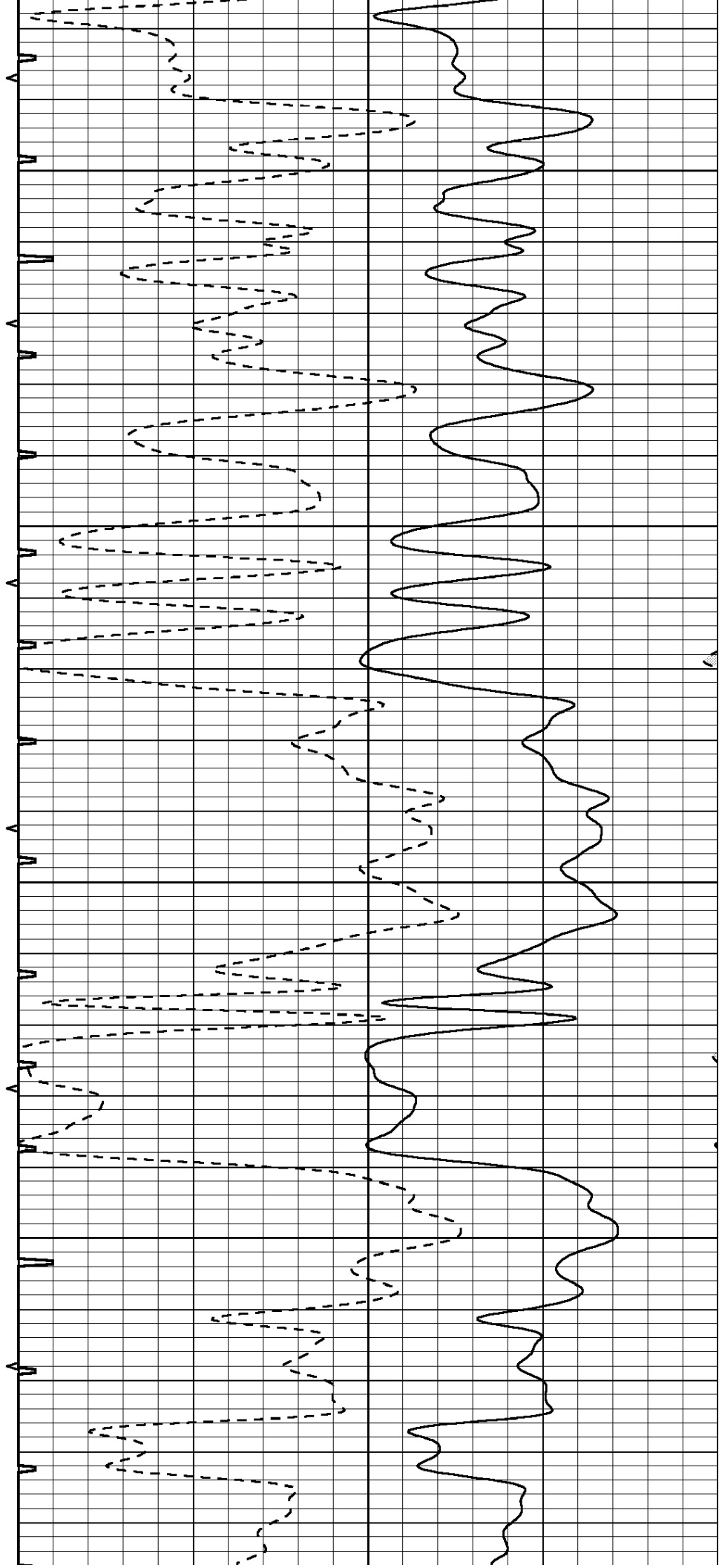


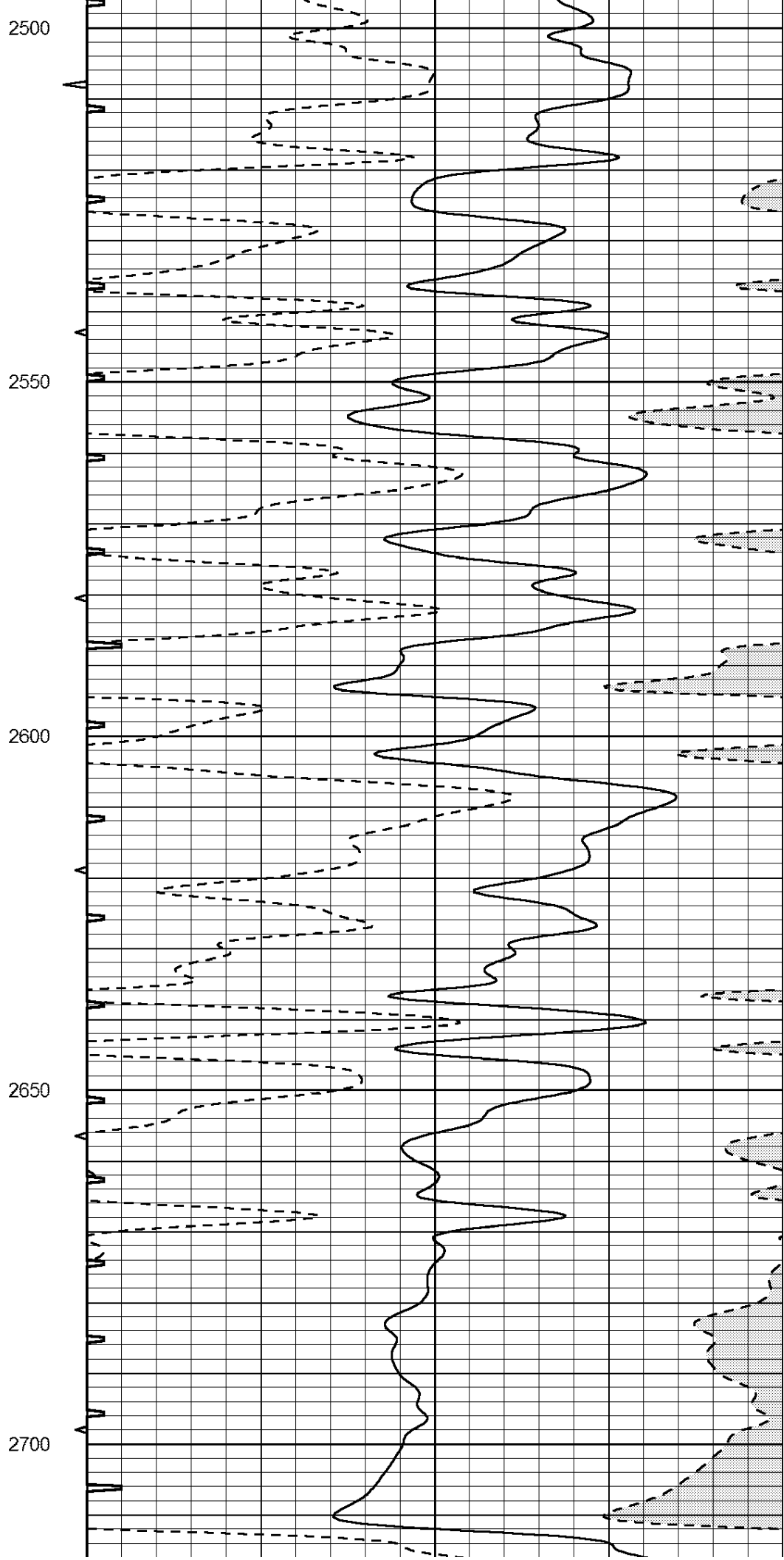
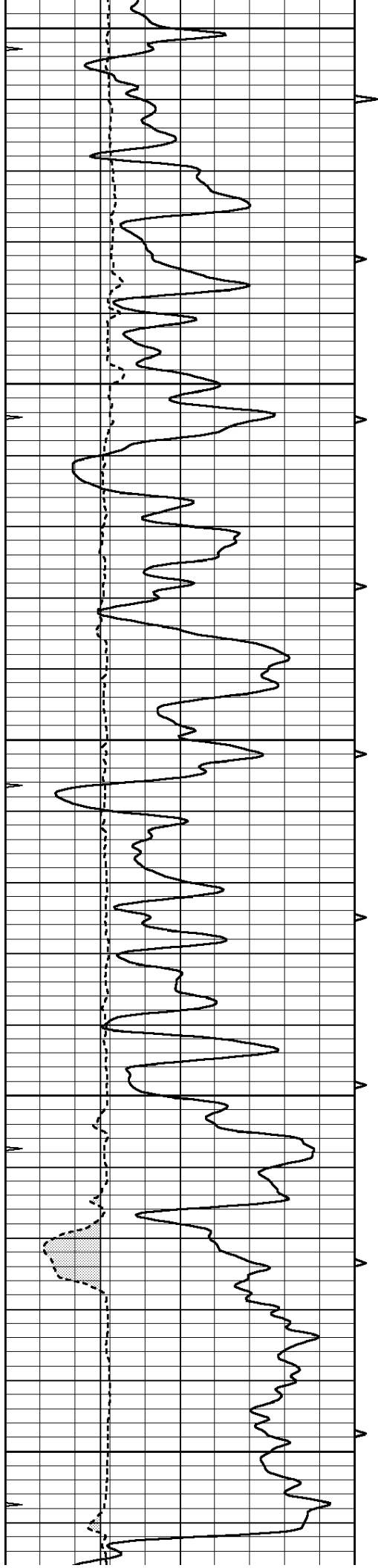
2300

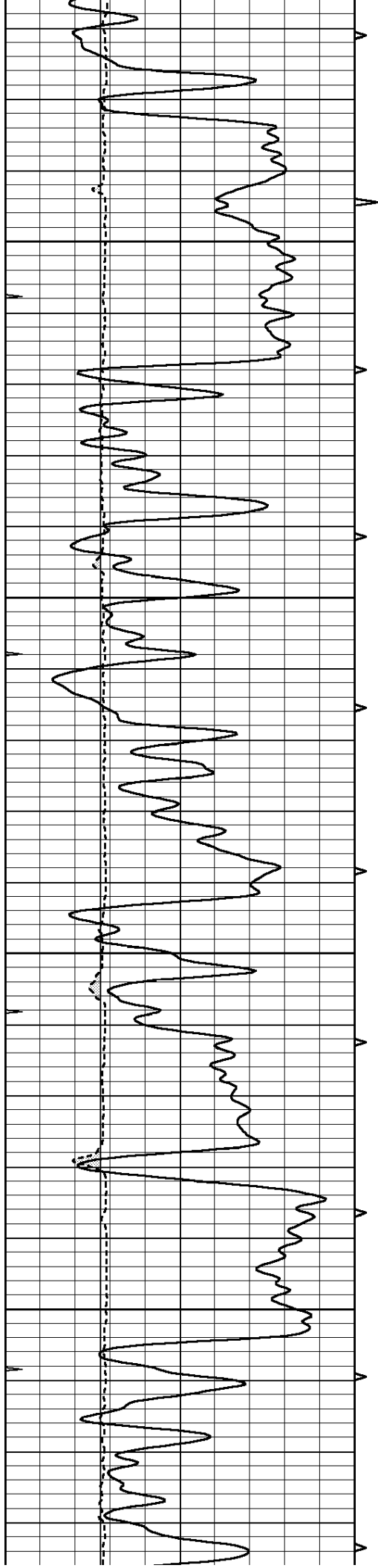
2350

2400

2450





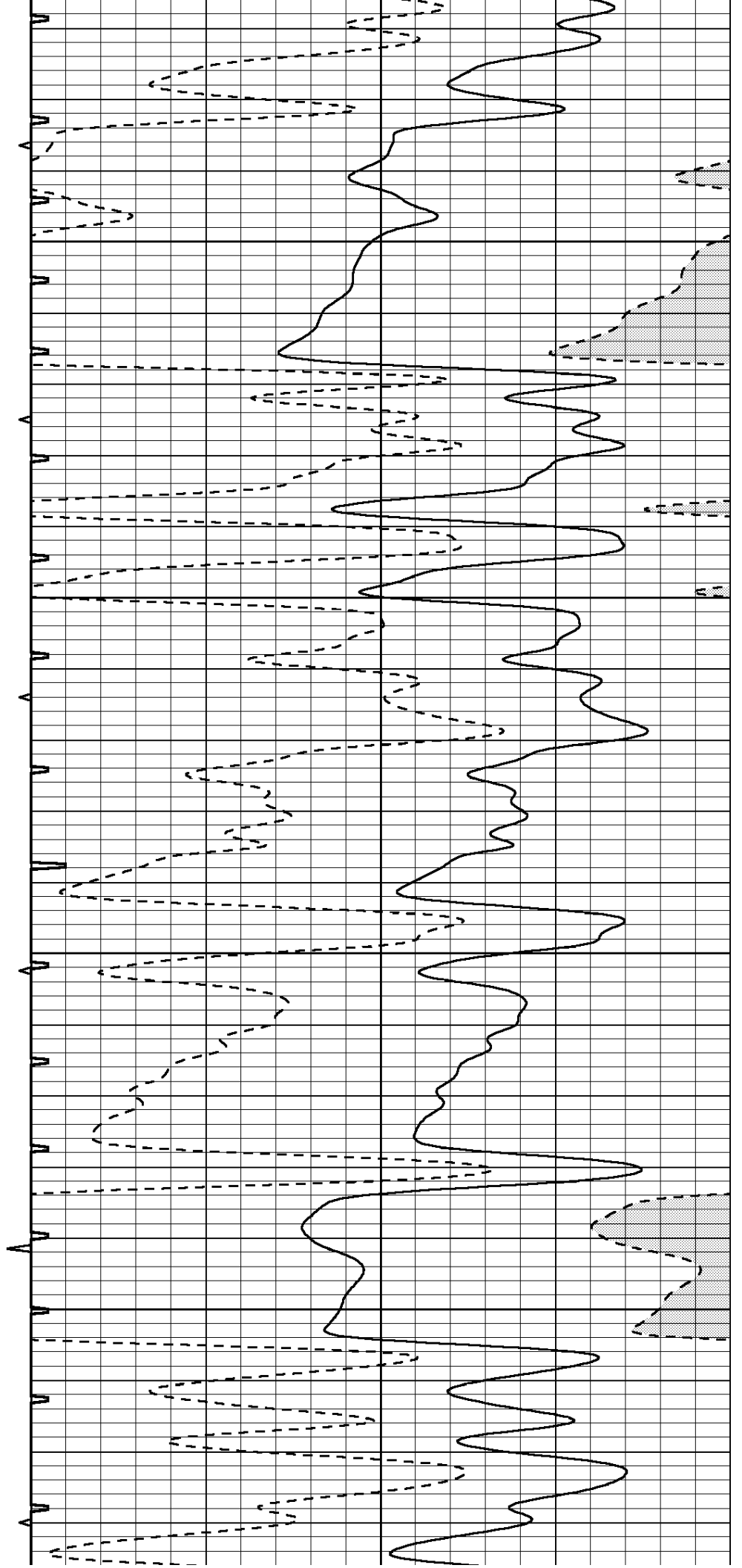


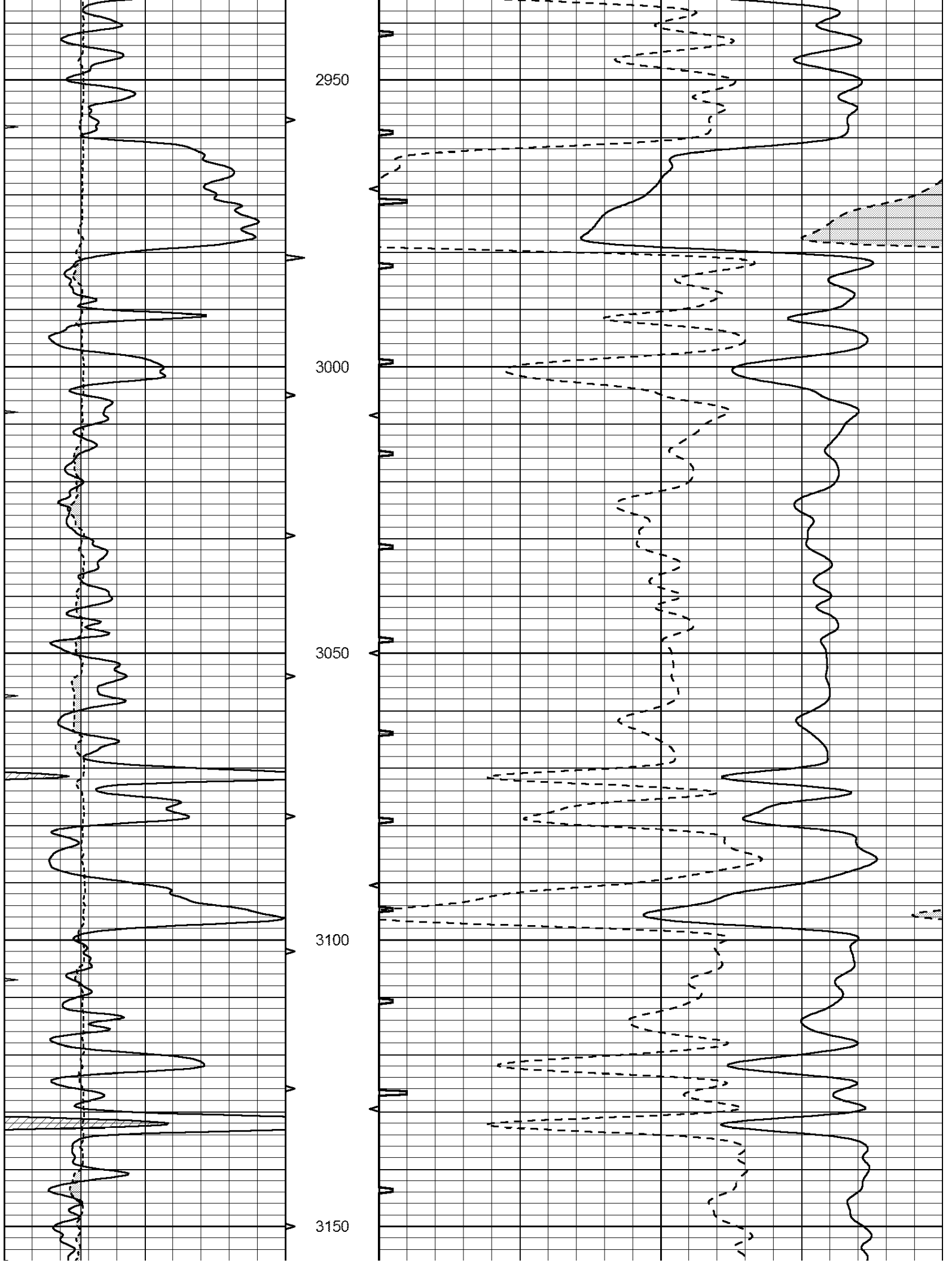
2750

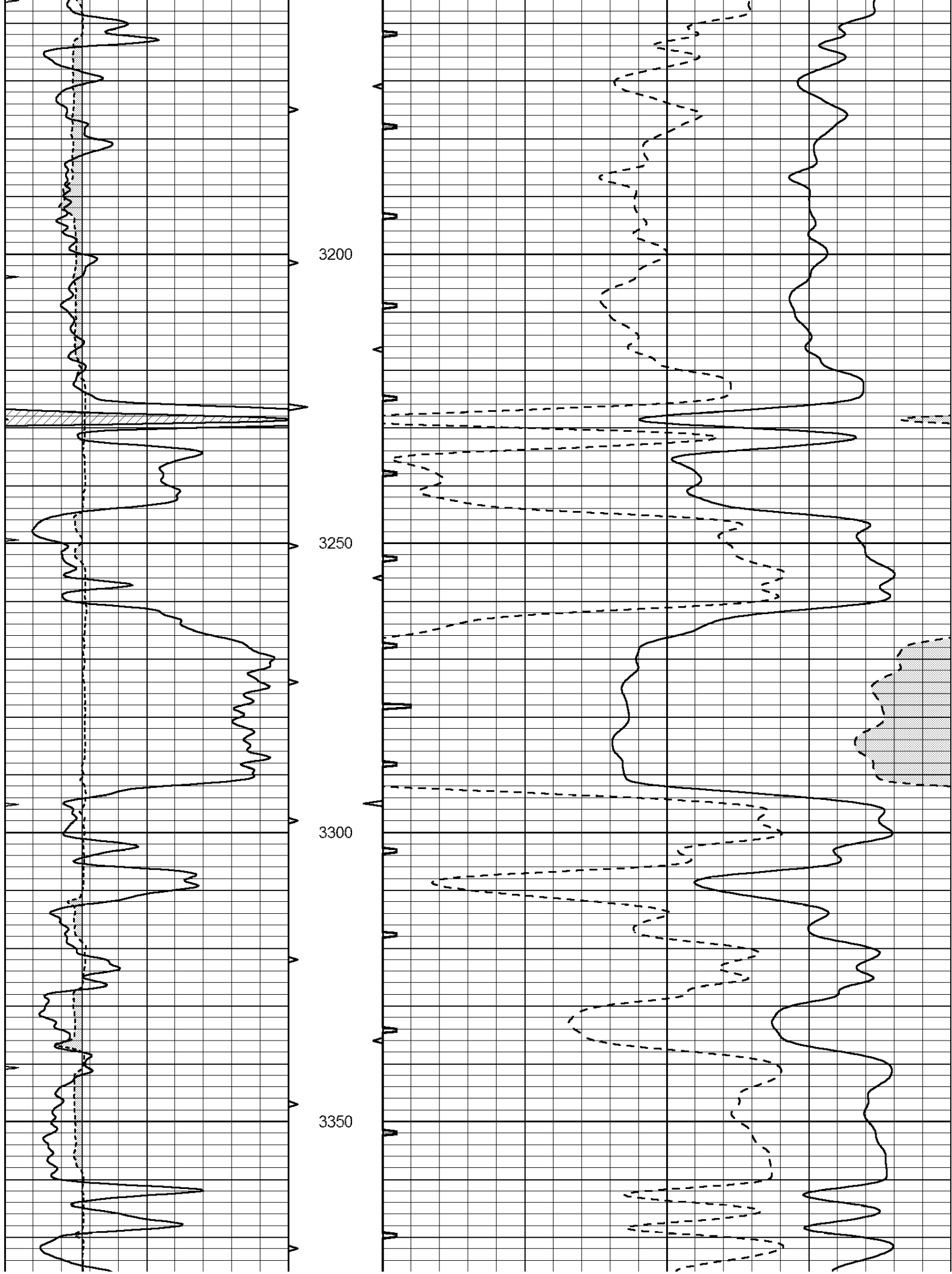
2800

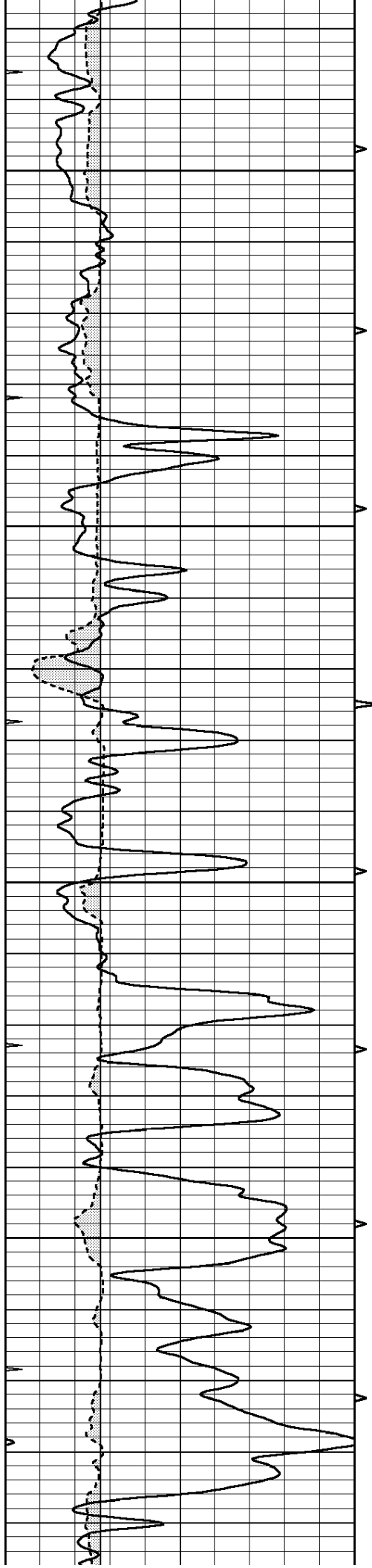
2850

2900







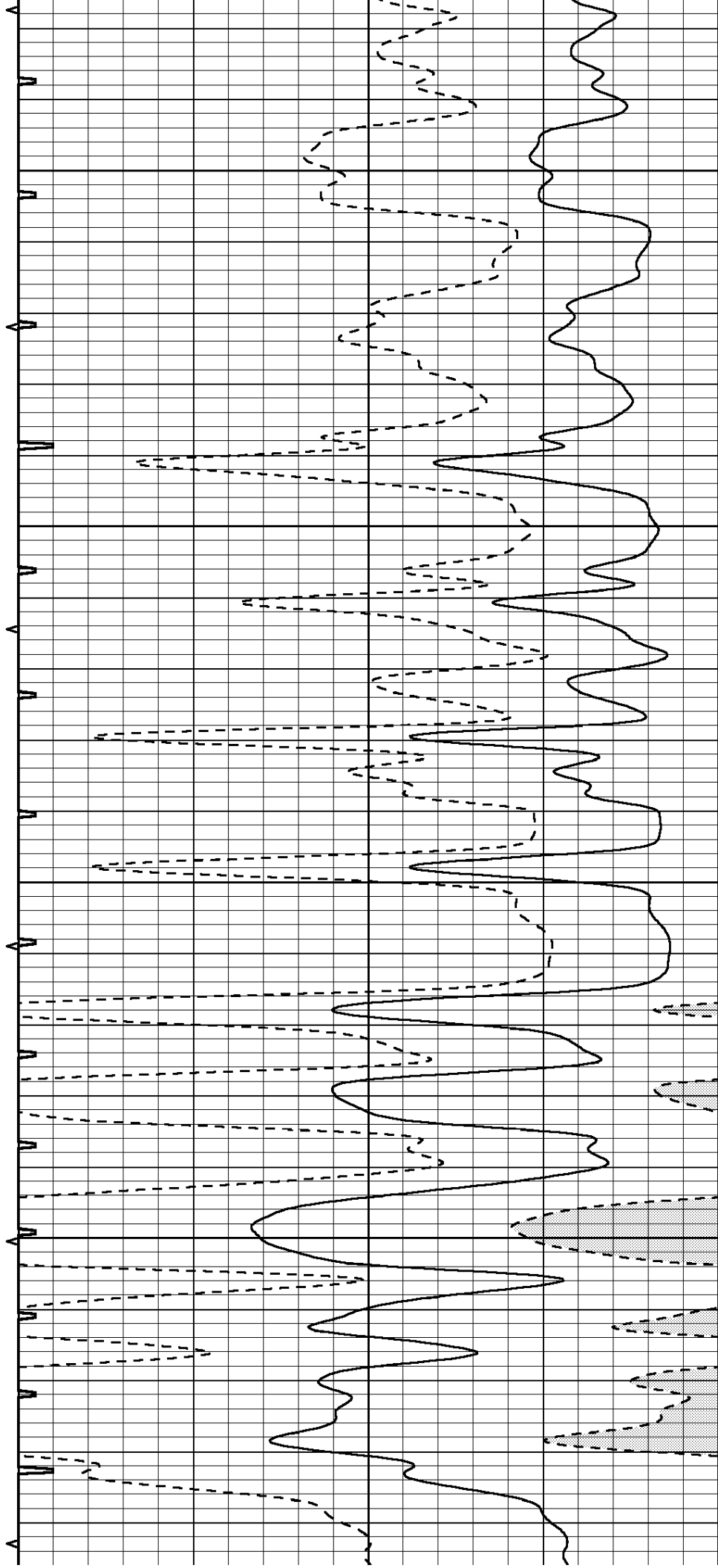


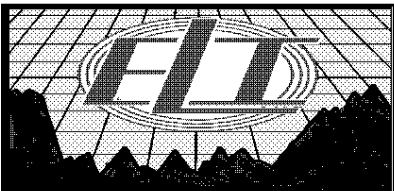
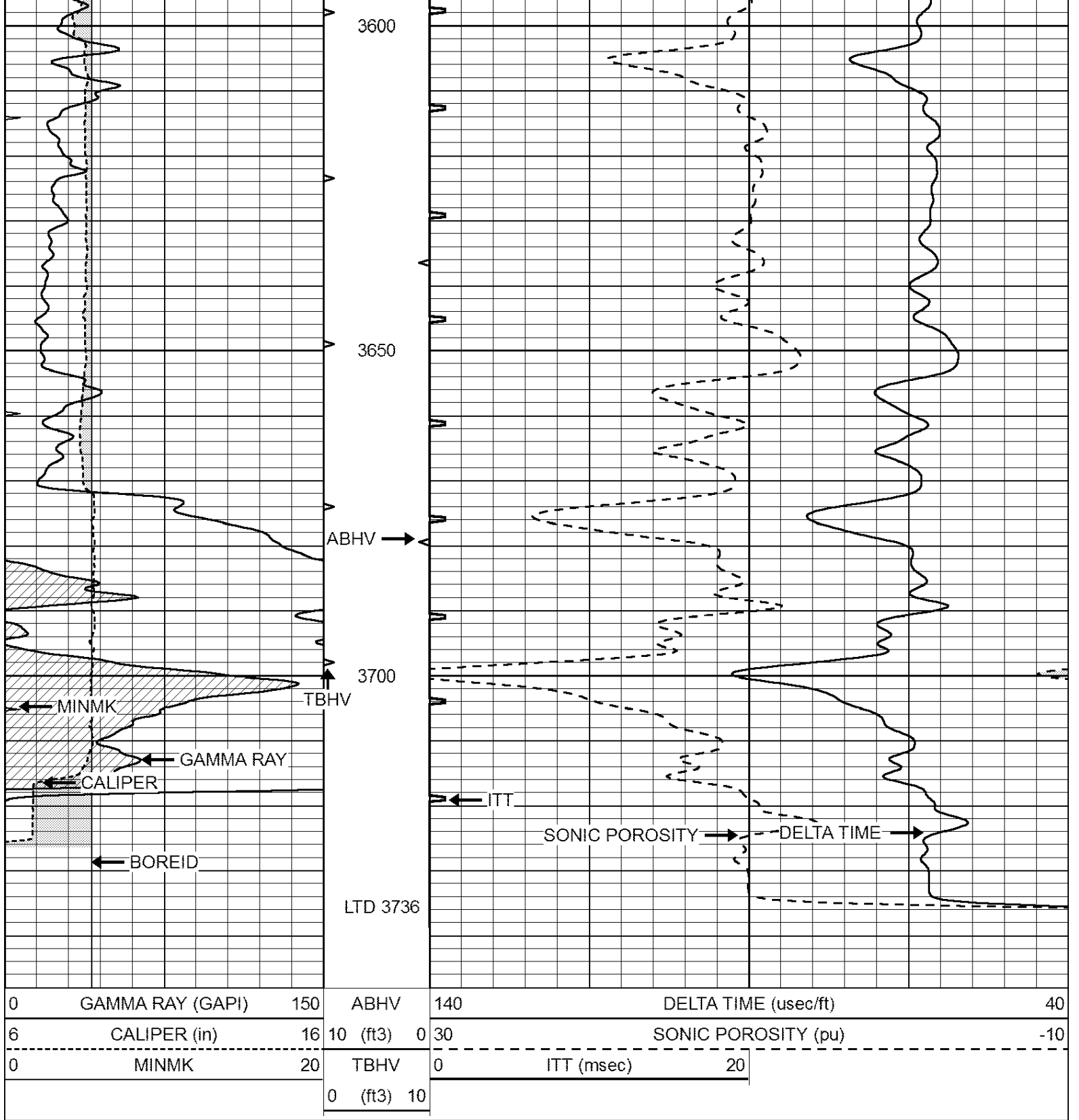
3400

3450

3500

3550





# REPEAT SECTION

Database File: 1473ddn.db  
 Dataset Pathname: pass4.1  
 Presentation Format: \_slt  
 Dataset Creation: Sun Jun 25 12:02:42 2017 by Calc Open-Cased 090629  
 Charted by: Depth in Feet scaled 1:240

0	GAMMA RAY (GAPI)	150	ABHV	140	DELTA TIME (usec/ft)	40
---	------------------	-----	------	-----	----------------------	----

6	CALIPER (in)	16	10 (ft3)	0	30	SONIC POROSITY (pu)	-10
0	MINMK	20	TBHV	0	ITT (msec)	20	
			0 (ft3)	10			

