



**MIDWEST SURVEYS**  
 LOGGING - PERFORATING - CONSULTING SERVICES  
 P.O. Box 68, Osawatomie, KS 66064  
 913 / 755 - 2128

**GAMMA RAY / NEUTRON / CCL**

File No.

Company **JTC Oil, Inc**

Well **Roy Beets No. 1-8**

Field **Paola / Rantoul**

County **Miami** State **Kansas**

Location **314' FNL & 2245' FEL**

Other Services **Perforate**

Sec. **12** Twp. **18S** Rge. **21E**

Permanent Datum **GL** Elevation **954'**

Log Measured From **GL** K.B. NA

Drilling Measured From **GL** D.F. NA

Date **10-22-2015** Elevation **GL 954'**

Run Number **One**

Depth Diller **700.0**

Depth Logger **688.0**

Bottom Logged Interval **688.0**

Top Log Interval **20.0**

Fluid Level **Full**

Type Fluid **Water**

Density / Viscosity **NA**

Salinity - PPM/Cl **NA**

Max Recorded Temp **NA**

Estimated Cement Top **0.0**

Equipment No. **102**

Location **Osawatomie**

Recorded By **Gary Windsch**

Witnessed By **Tom Cain**

BORE-HOLE RECORD

CASINGS RECORD

TO

FROM

SIZE

WGT

FROM

TO

One 9.875" 0.0 20.0 7.00" 17.0# 0.0 20.0

Two 5.625" 20.0 700.0 2.875" 6.5# 0.0 691.0

<<< Fold Here >>>

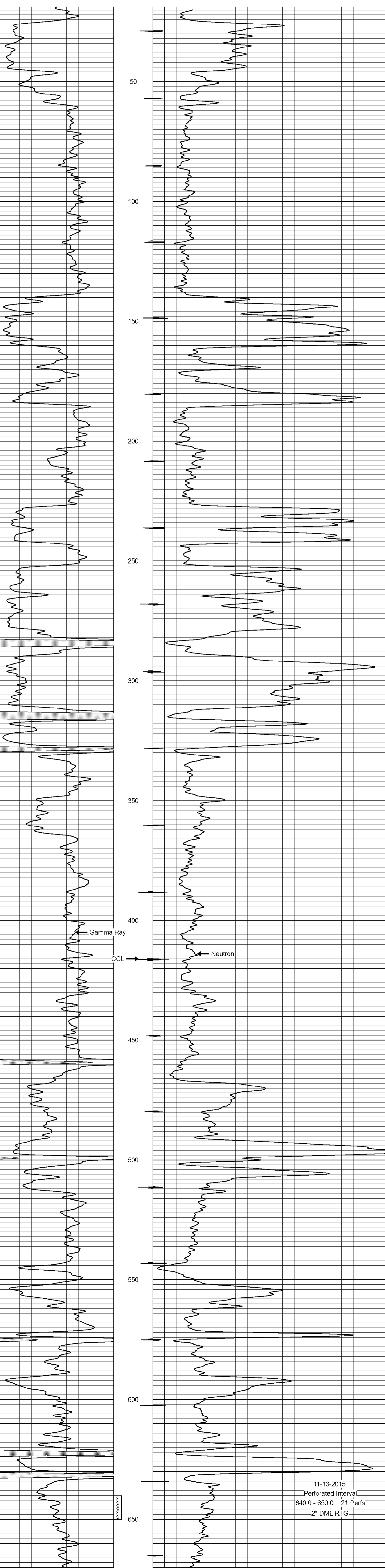
All interpretations are opinions based on inferences from electrical or other measurements and we cannot and do not guarantee the accuracy or correctness of any interpretation, and we shall not, except in the case of gross or willful negligence on our part, be liable or responsible for any loss, costs, damages, or expenses incurred or sustained by anyone resulting from any interpretation made by any of our officers, agents or employees. These interpretations are also subject to our general terms and conditions set out in our current Price Schedule.

Comments

Drilling Contractor :  
 JTC Oil, Inc.

Database File: beets 8ir.db  
 Dataset Pathname: pass1  
 Presentation Format: gr-n-ccl  
 Dataset Creation: Thu Oct 22 15:14:42 2015 by Log SCH 111116  
 Charted by: Depth in Feet scaled 1:240

0 Gamma Ray (cps) 150  
 150 Gamma Ray (cps) 300  
 -1 CCL 1  
 100 Neutron (cps) 1900



0 Gamma Ray (cps) 150  
 150 Gamma Ray (cps) 300  
 -1 CCL 1  
 100 Neutron (cps) 1900