



MICRORESISTIVITY LOG

Company CYNOSURE ENERGY, LLC
 Well DECHANT NO. 1-18-15-19
 Field WILDCAT
 County ELLIS
 State KANSAS

Company CYNOSURE ENERGY, LLC
 Well DECHANT NO. 1-18-15-19
 Field WILDCAT
 County ELLIS State KANSAS

Location: API #: 15-051-26,787-00-00
 NE SW SE NW
 2,010' FNL & 1,820' FWL
 SEC 18 TWP 15S RGE 19W
 Permanent Datum GROUND LEVEL Elevation 1982'
 Log Measured From KELLY BUSHING
 Drilling Measured From KELLY BUSHING
 Other Services
 CNL/CDL
 DIL/BHCS
 Elevation
 K.B. 1994'
 D.F. N/A
 G.L. 1982'

Date	8/30/2015
Run Number	TWO
Depth Driller	3650'
Depth Logger	3654'
Bottom Logged Interval	3653'
Top Log Interval	3000'
Casing Driller	8.625" @ 1243'
Casing Logger	1234'
Bit Size	7.875"
Type Fluid in Hole	CHEMICAL
Salinity, ppm CL	4900
Density / Viscosity	9.4 61
pH / Fluid Loss	9.0 9.2
Source of Sample	Flowline
Rm @ Meas. Temp	.60 @ 76
Rmt @ Meas. Temp	.45 @ 76
Rmc @ Meas. Temp	.81 @ 76
Source of Rmf / Rmc	Charts
Rm @ BHT	.41 @ 113
Operating Rig Time	4 HOURS
Max Rec. Temp. F	113
Equipment Number	108
Location	Hays
Recorded By	J. LONG
Witnessed By	JUSTIN CARTER

<<< Fold Here >>>

All interpretations are opinions based on inferences from electrical or other measurements and Pioneer Wireline Services, LLC cannot and does not guarantee the accuracy or correctness of any interpretation, and Pioneer Wireline Services, LLC will not be liable or responsible for any loss, costs, damages, or expenses incurred or sustained by anyone resulting from any interpretation made by any of our officers, agents or employees.

Comments

N/A DENOTES NOT AVAILABLE OR NON-APPLICABLE.
 ANTONINO, 3 WEST, 3 SOUTH, 1 WEST, 1 WEST AND NORTH INTO

Log Measured From: KELLY BUSHING 12 Ft. Above Permanent Datum

THANK YOU FOR USING PIONEER ENERGY SERVICES
 www.pioneerenergy.com 785-625-3858

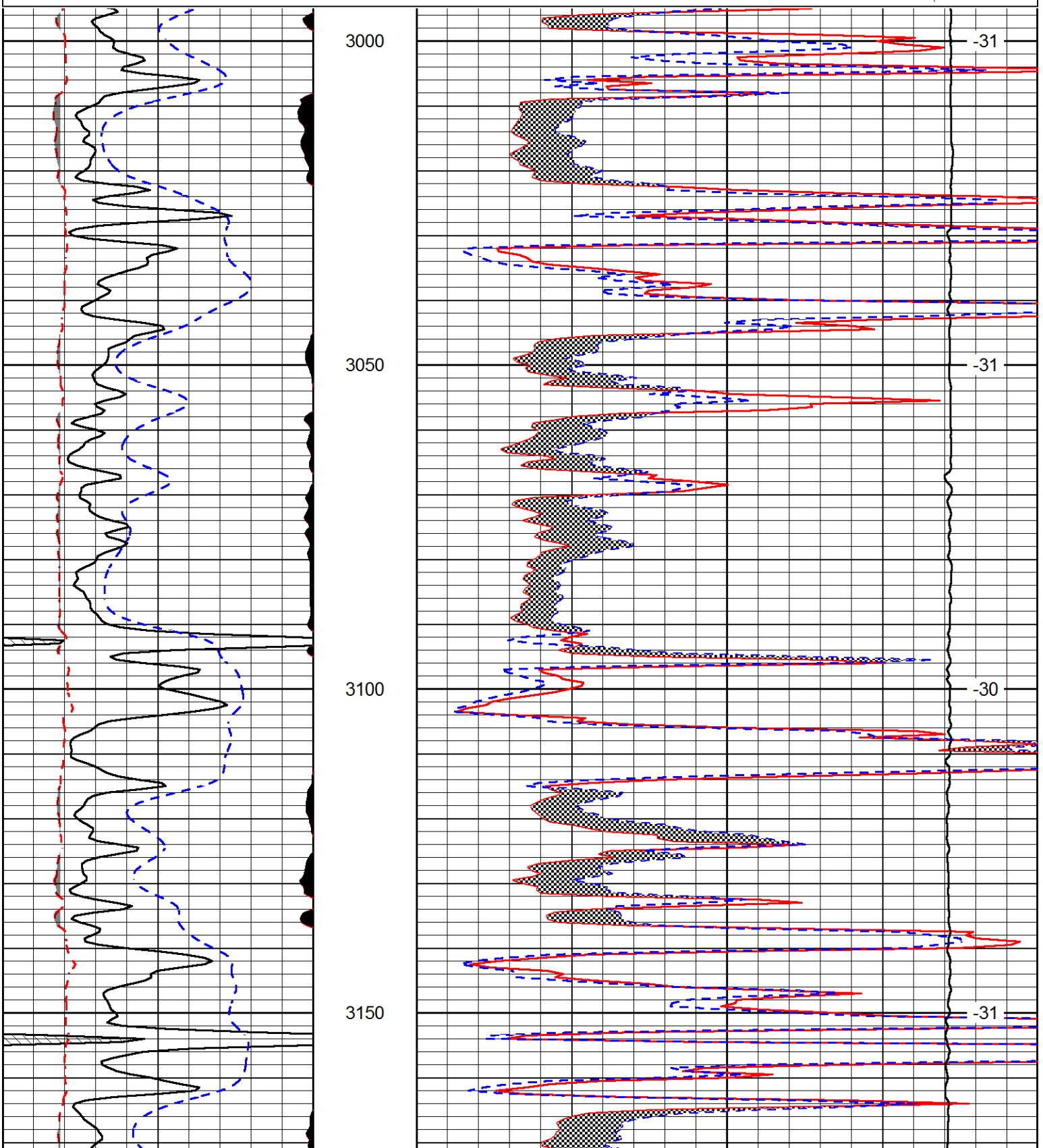
Your Pioneer Energy Services Crew Engineer: J. LONG Operator: Operator: Operator:	This Log Record Was Witnessed By Primary Witness: JUSTIN CARTER Secondary Witness: Secondary Witness: Secondary Witness:
------------------------------------------------------------------------------------------------------	---------------------------------------------------------------------------------------------------------------------------------------------

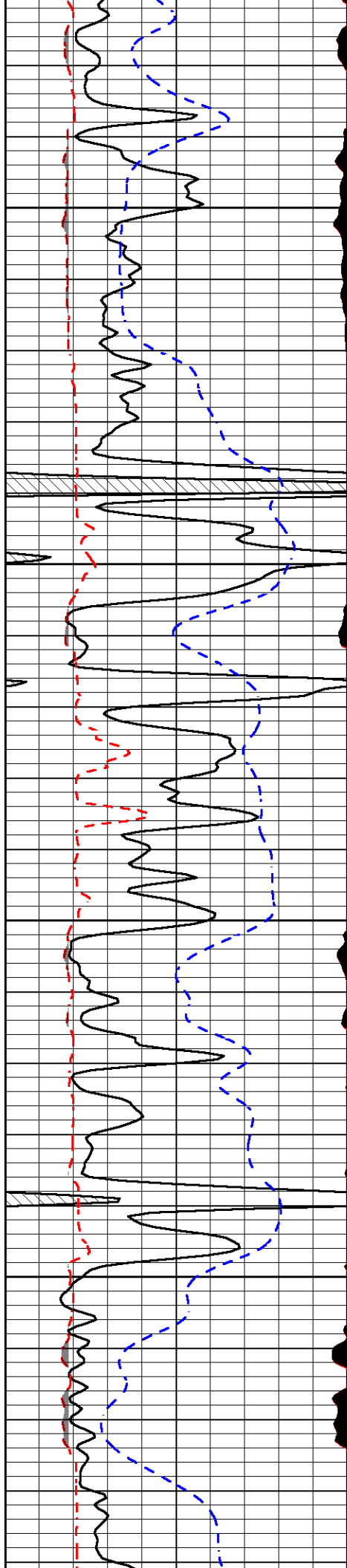
Database File cynosure_dechant_1-18-15-19hd.db
 Dataset Pathname DIL/cynostck
 Presentation Format micro
 Dataset Creation Sun Aug 30 16:53:54 2015
 Charted by Depth in Feet scaled 1:240

0	Gamma Ray (GAPI)	150
6	MCAL (in)	16
2.875	Mud Cake (in)	7.875
-200	SP (mV)	0

0	Micro Inverse 1 X 1 (Ohm-m)	40
0	Micro Normal 2" (Ohm-m)	40
10000	Line Weight (lb)	0

LSPD
(ft/min)



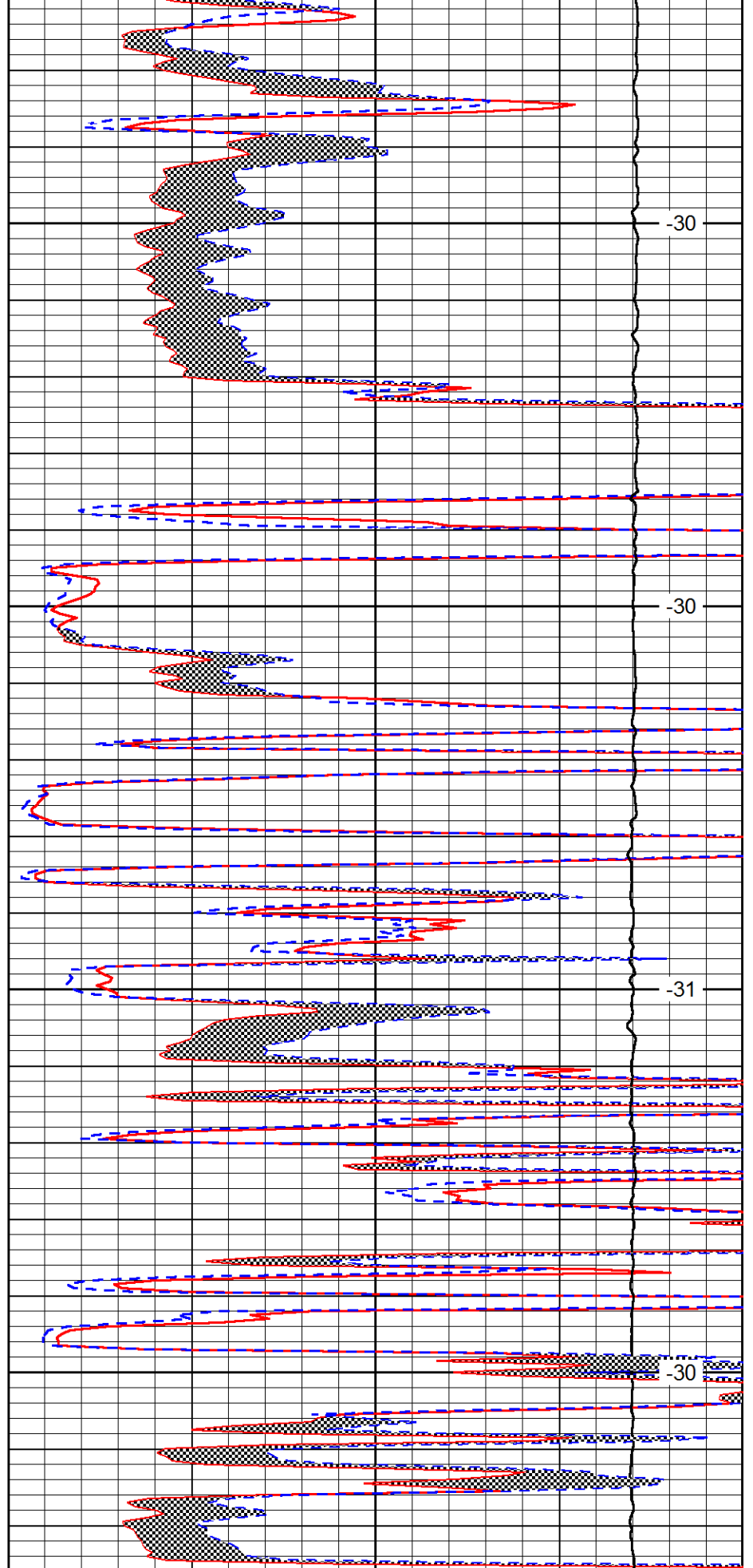


3200

3250

3300

3350

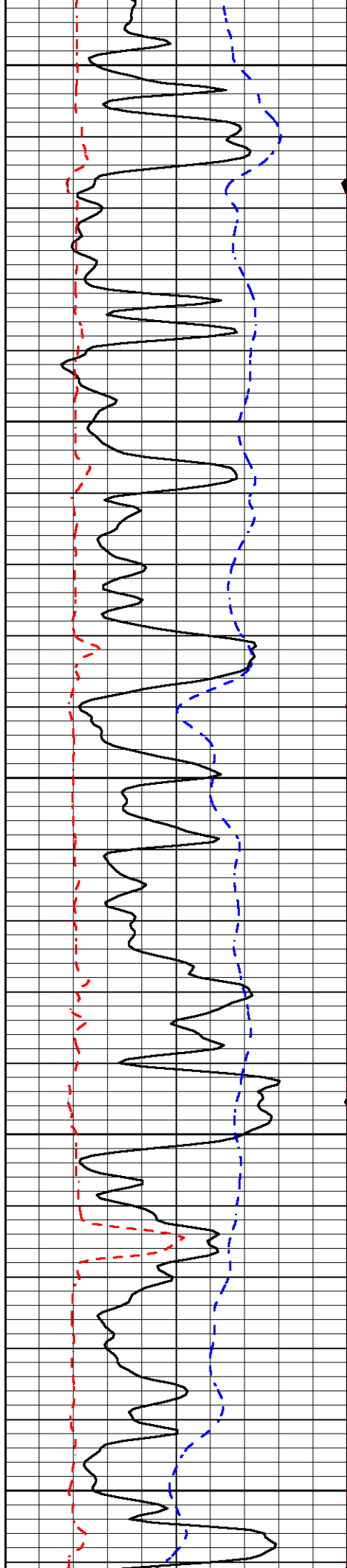


-30

-30

-31

-30



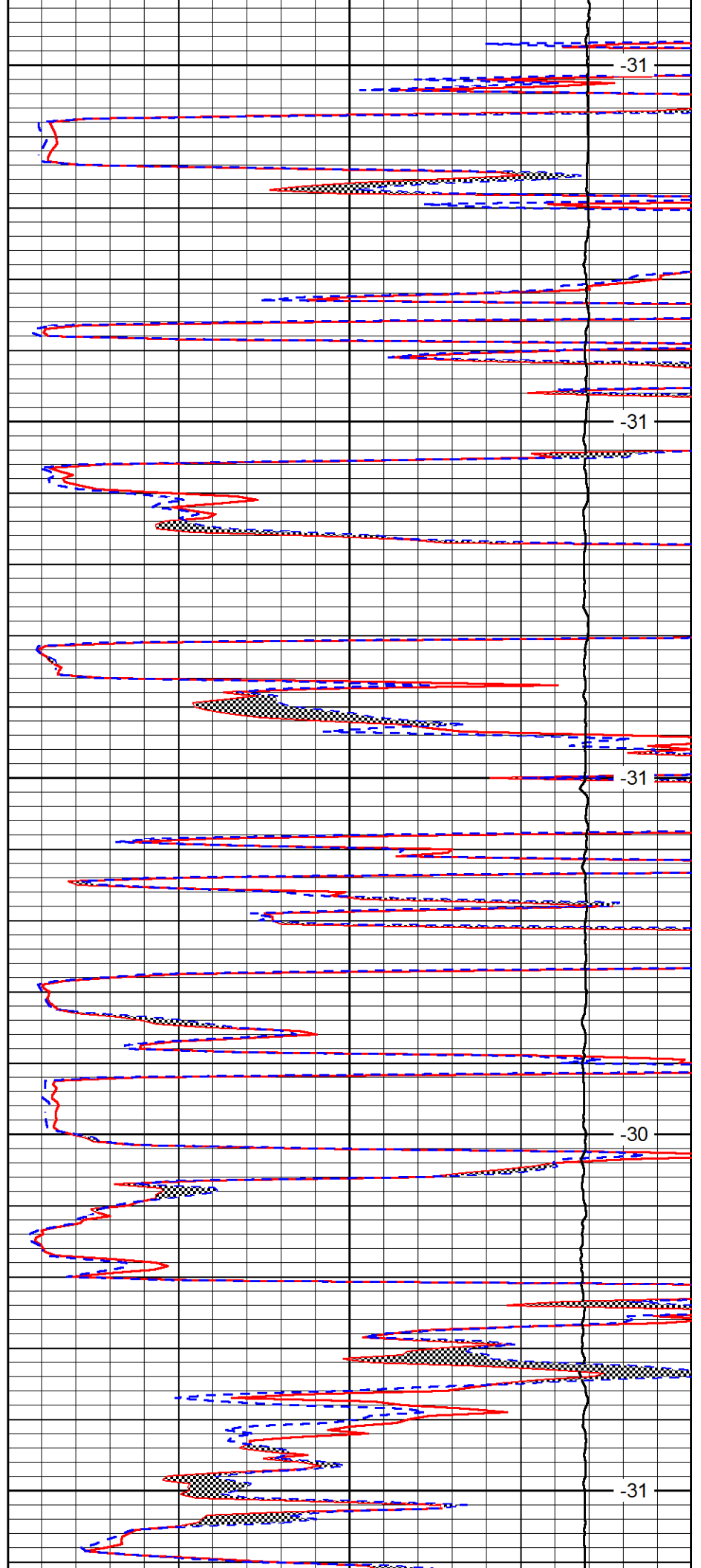
3400

3450

3500

3550

3600



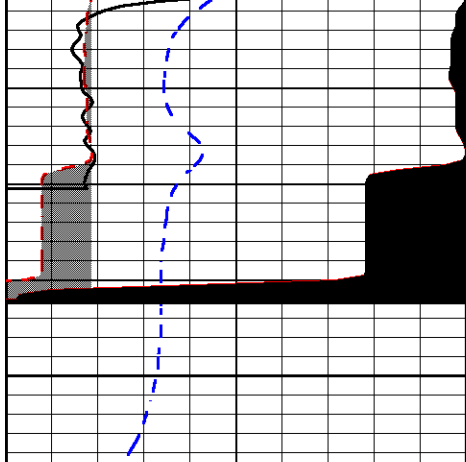
-31

-31

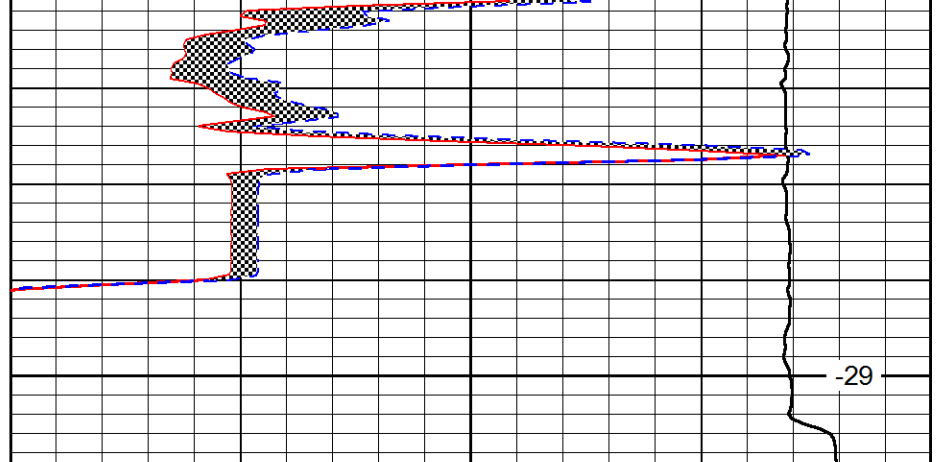
-31

-30

-31



3650



-29

0	Gamma Ray (GAPI)	150
6	MCAL (in)	16
2.875	Mud Cake (in)	7.875
-200	SP (mV)	0

0	Micro Inverse 1 X 1 (Ohm-m)	40
0	Micro Normal 2" (Ohm-m)	40
10000	Line Weight (lb)	0

LSPD
(ft/min)