



DUAL INDUCTION LOG

Company CYNOSURE ENERGY, LLC
 Well DECHANT NO. 1-18-15-19
 Field WILDCAT
 County ELLIS
 State KANSAS

Company CYNOSURE ENERGY, LLC
 Well DECHANT NO. 1-18-15-19
 Field WILDCAT
 County ELLIS State KANSAS

Location: API #: 15-051-26,787-00-00
 NE SW SE NW
 2,010' FNL & 1,820' FWL
 SEC 18 TWP 15S RGE 19W
 Permanent Datum GROUND LEVEL Elevation 1982'
 Log Measured From KELLY BUSHING
 Drilling Measured From KELLY BUSHING
 Other Services CNL/CDL MEL/BHCS
 Elevation K.B. 1994'
 D.F. N/A
 G.L. 1982'

Date	8/30/2015
Run Number	ONE
Depth Driller	3650'
Depth Logger	3654'
Bottom Logged Interval	3653'
Top Log Interval	1200'
Casing Driller	8.625" @ 1243'
Casing Logger	1234'
Bit Size	7.875"
Type Fluid in Hole	CHEMICAL
Salinity, ppm CL	4900
Density / Viscosity	9.4 61
pH / Fluid Loss	9.0 9.2
Source of Sample	Flowline
Rm @ Meas. Temp	.60 @ 76
Rmt @ Meas. Temp	.45 @ 76
Rmc @ Meas. Temp	.81 @ 76
Source of Rmf / Rmc	Charts
Rm @ BHT	.41 @ 113
Operating Rig Time	4 HOURS
Max Rec. Temp. F	113
Equipment Number	108
Location	Hays
Recorded By	J. LONG
Witnessed By	JUSTIN CARTER

<<< Fold Here >>>

All interpretations are opinions based on inferences from electrical or other measurements and Pioneer Wireline Services, LLC cannot and does not guarantee the accuracy or correctness of any interpretation, and Pioneer Wireline Services, LLC will not be liable or responsible for any loss, costs, damages, or expenses incurred or sustained by anyone resulting from any interpretation made by any of our officers, agents or employees.

Comments

N/A DENOTES NOT AVAILABLE OR NON-APPLICABLE.
 ANTONINO, 3 WEST, 3 SOUTH, 1 WEST, 1 WEST AND NORTH INTO

Log Measured From: KELLY BUSHING 12 Ft. Above Permanent Datum

THANK YOU FOR USING PIONEER ENERGY SERVICES
www.pioneerenergy.com 785-625-3858

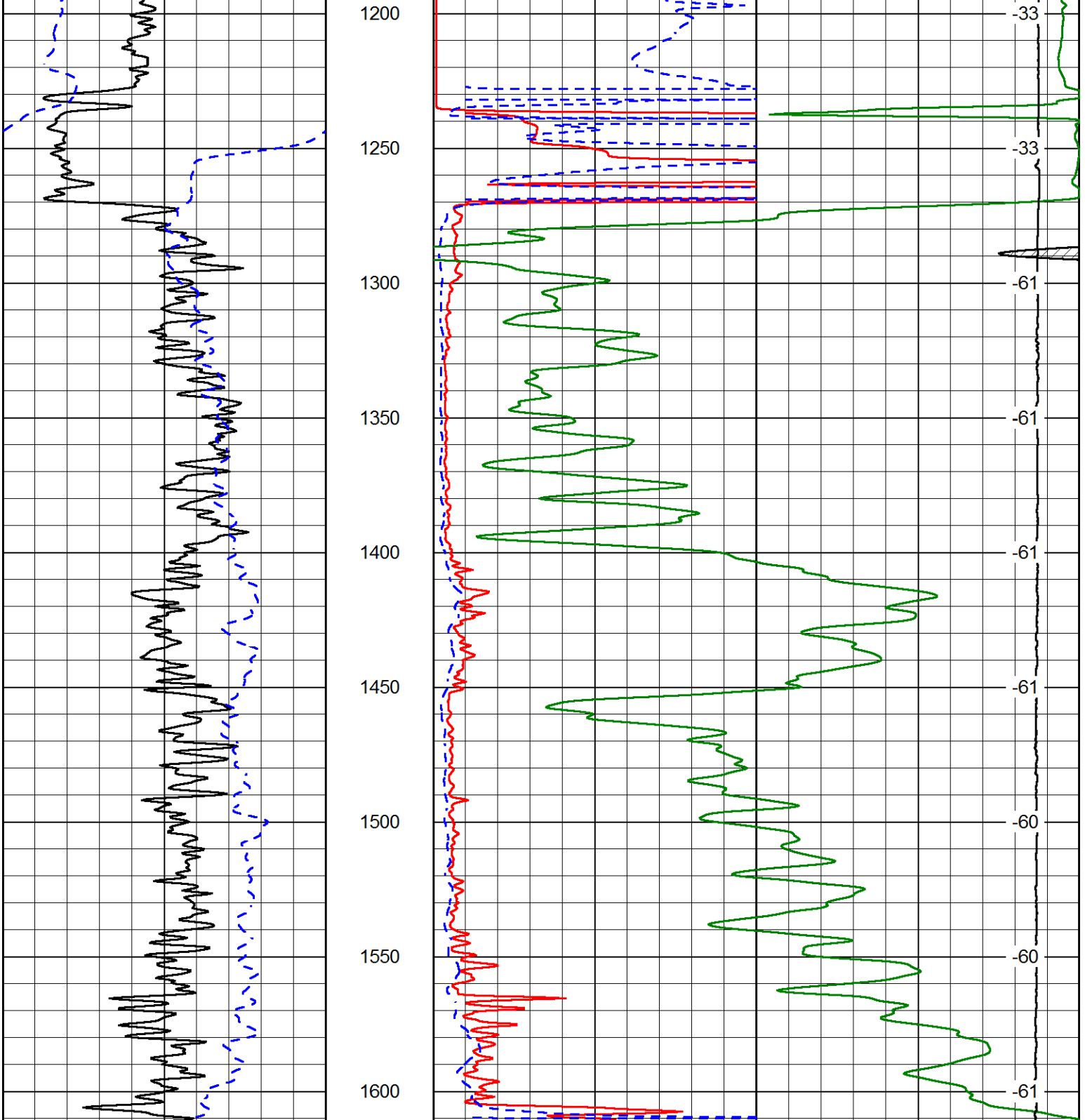
Your Pioneer Energy Services Crew Engineer: J. LONG Operator: Operator: Operator:	This Log Record Was Witnessed By Primary Witness: JUSTIN CARTER Secondary Witness: Secondary Witness: Secondary Witness:
---	--

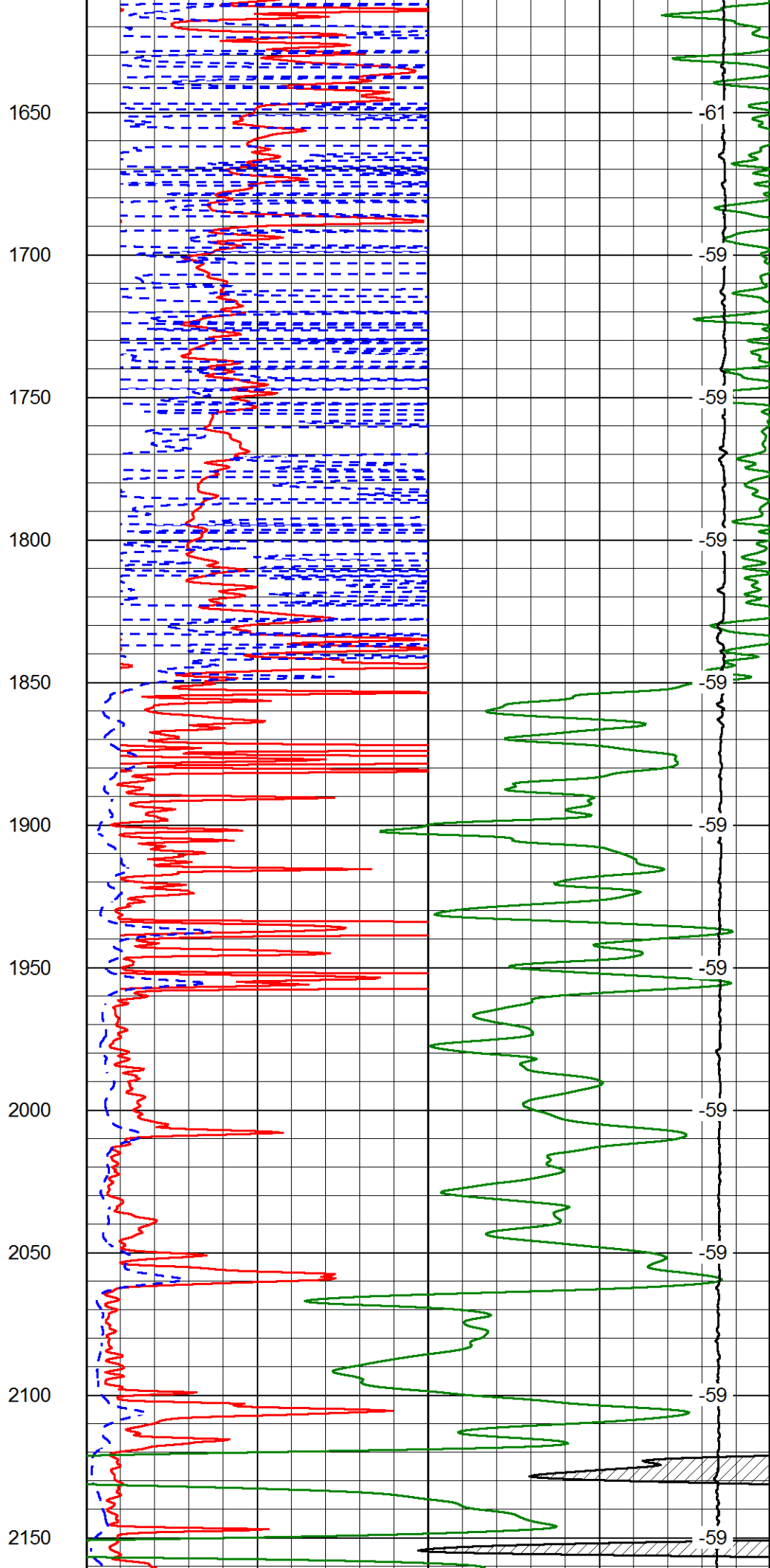
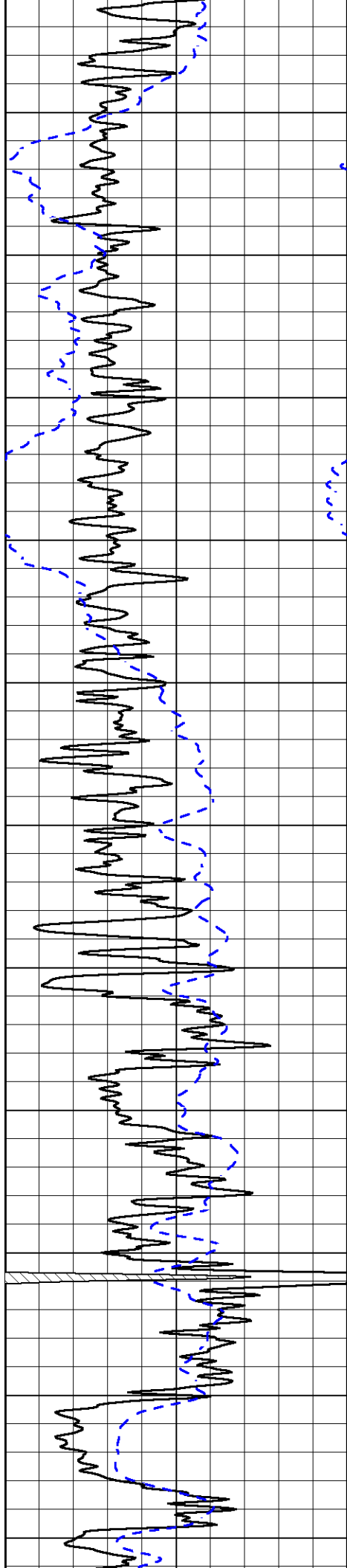
Database File cynosure_dechant_1-18-15-19hd.db
 Dataset Pathname DIL/cynostck
 Presentation Format dil2in
 Dataset Creation Sun Aug 30 16:53:54 2015
 Charted by Depth in Feet scaled 1:600

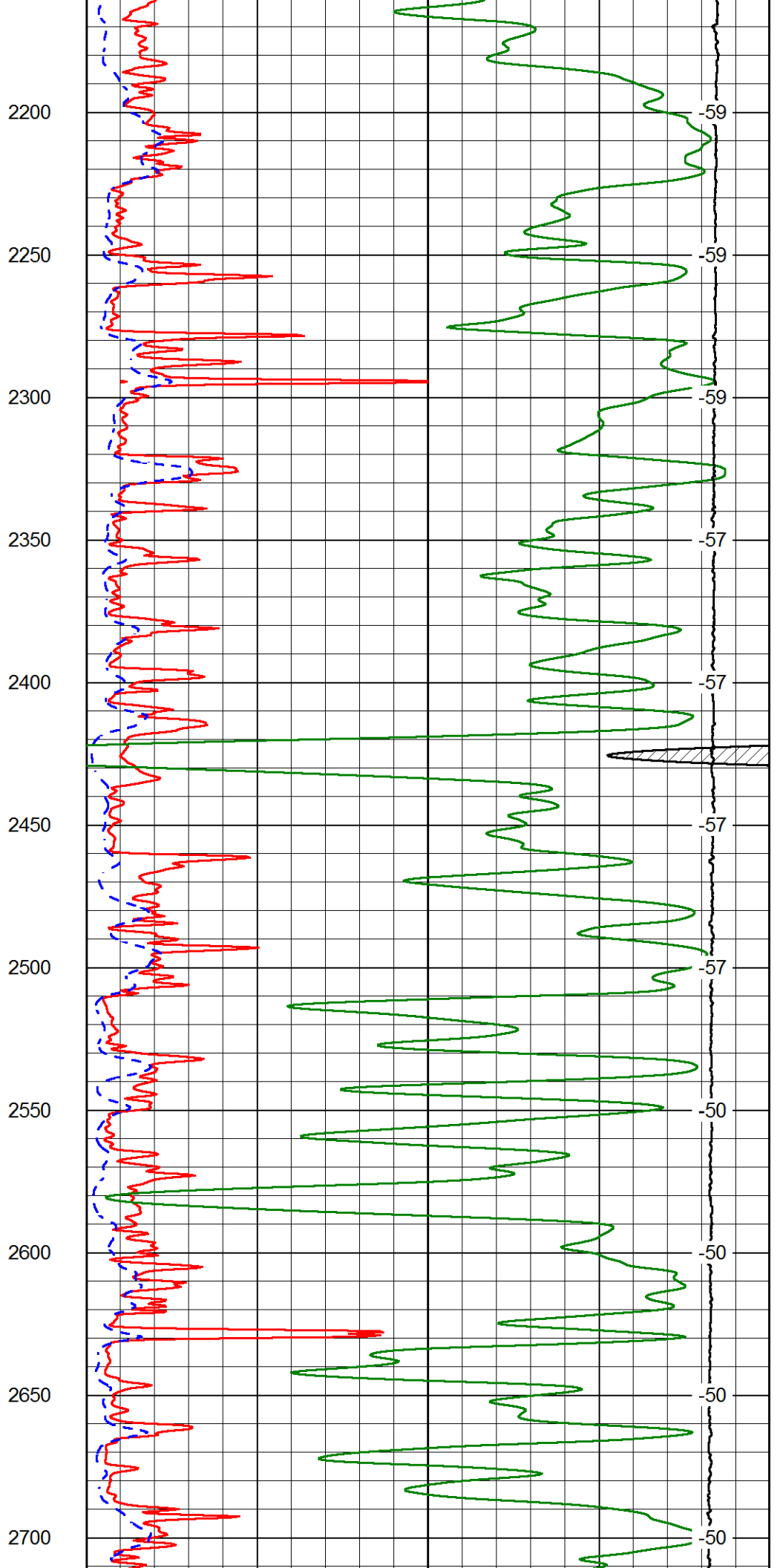
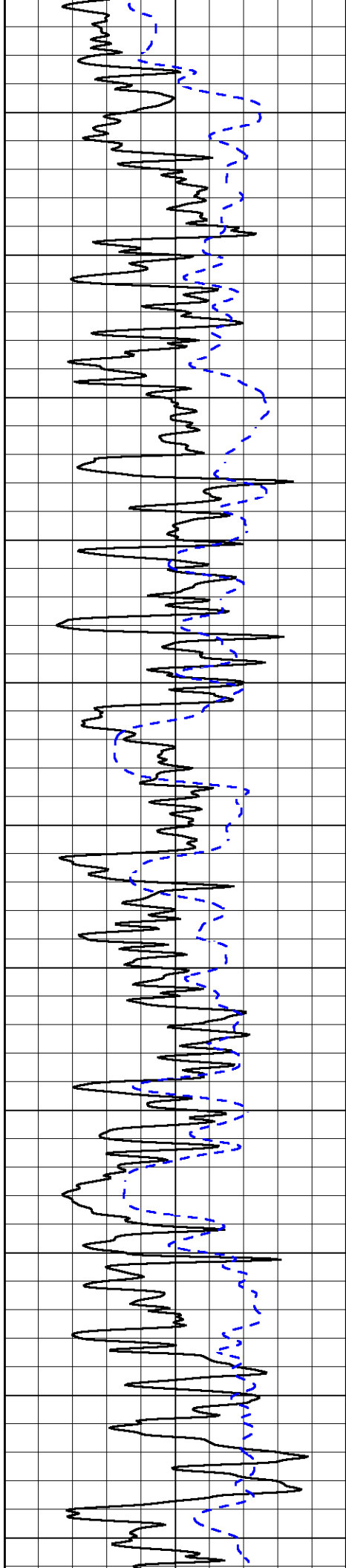
0 Gamma Ray (GAPI) 150
 -200 SP (mV) 0

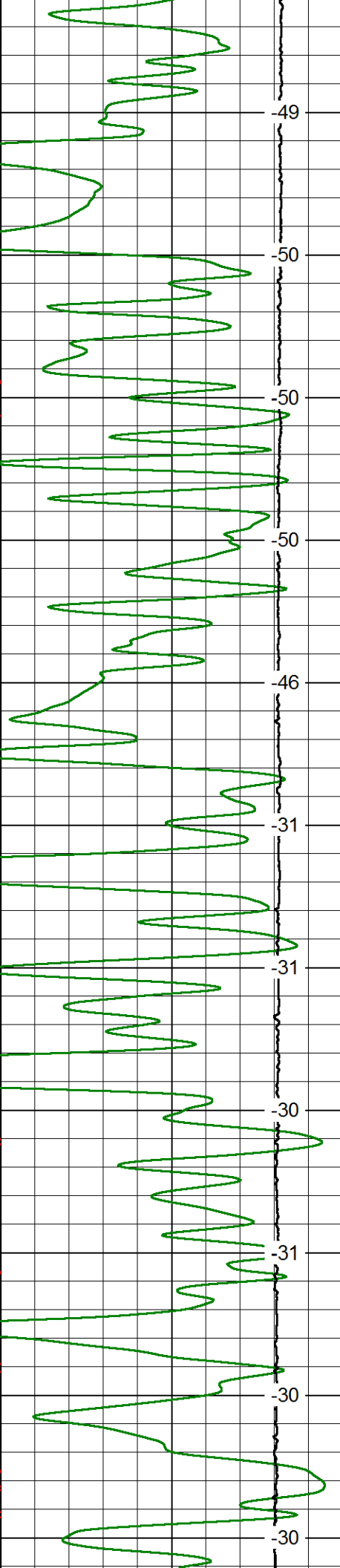
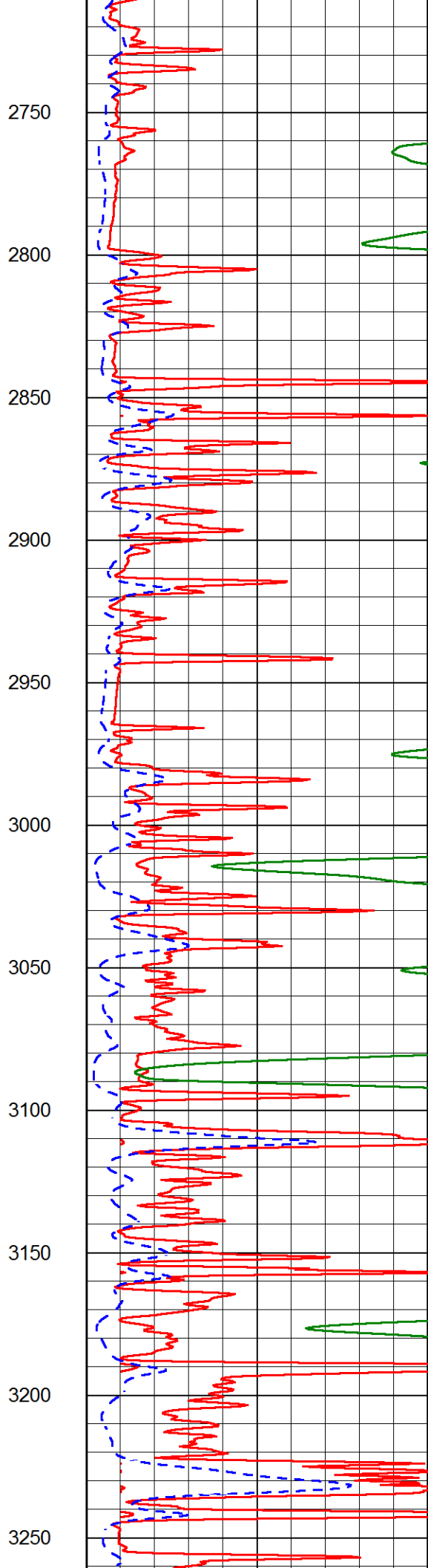
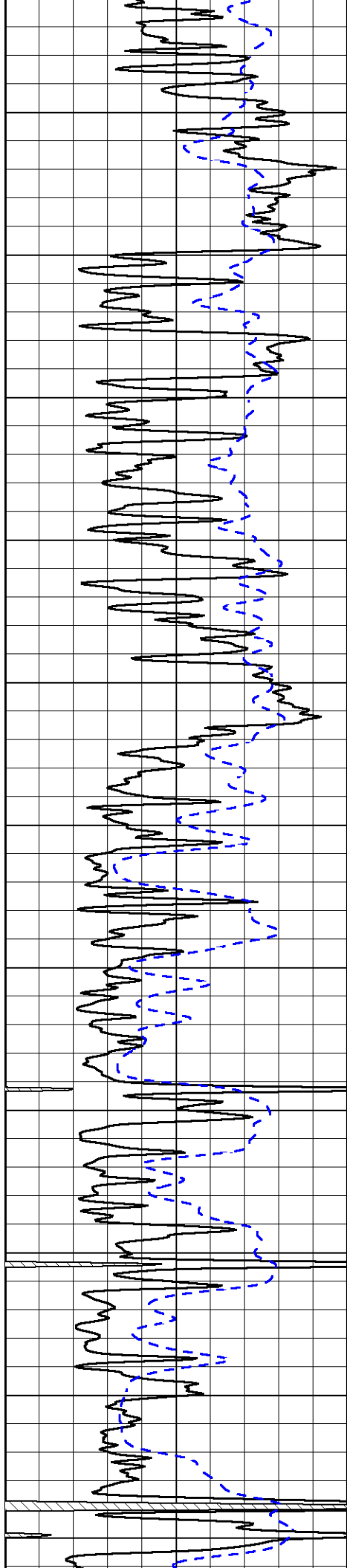
1000 Conductivity 0
 15000 Line Tension (lb) 0

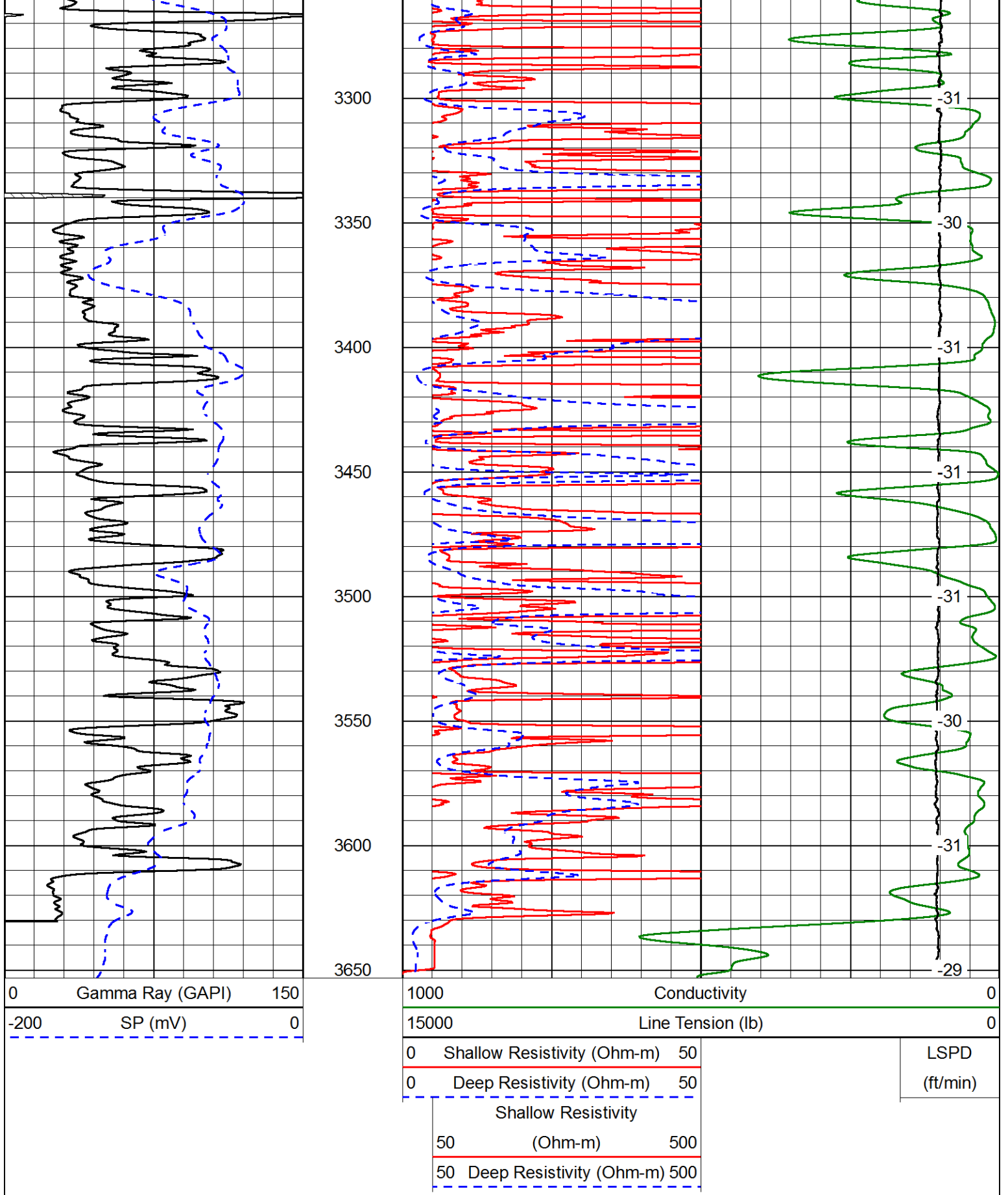
0 Shallow Resistivity (Ohm-m) 50
 0 Deep Resistivity (Ohm-m) 50
 Shallow Resistivity
 50 (Ohm-m) 500
 50 Deep Resistivity (Ohm-m) 500
 LSPD (ft/min)



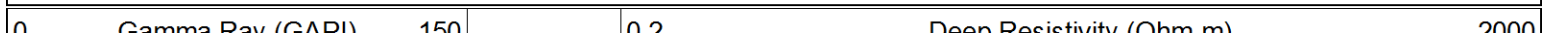








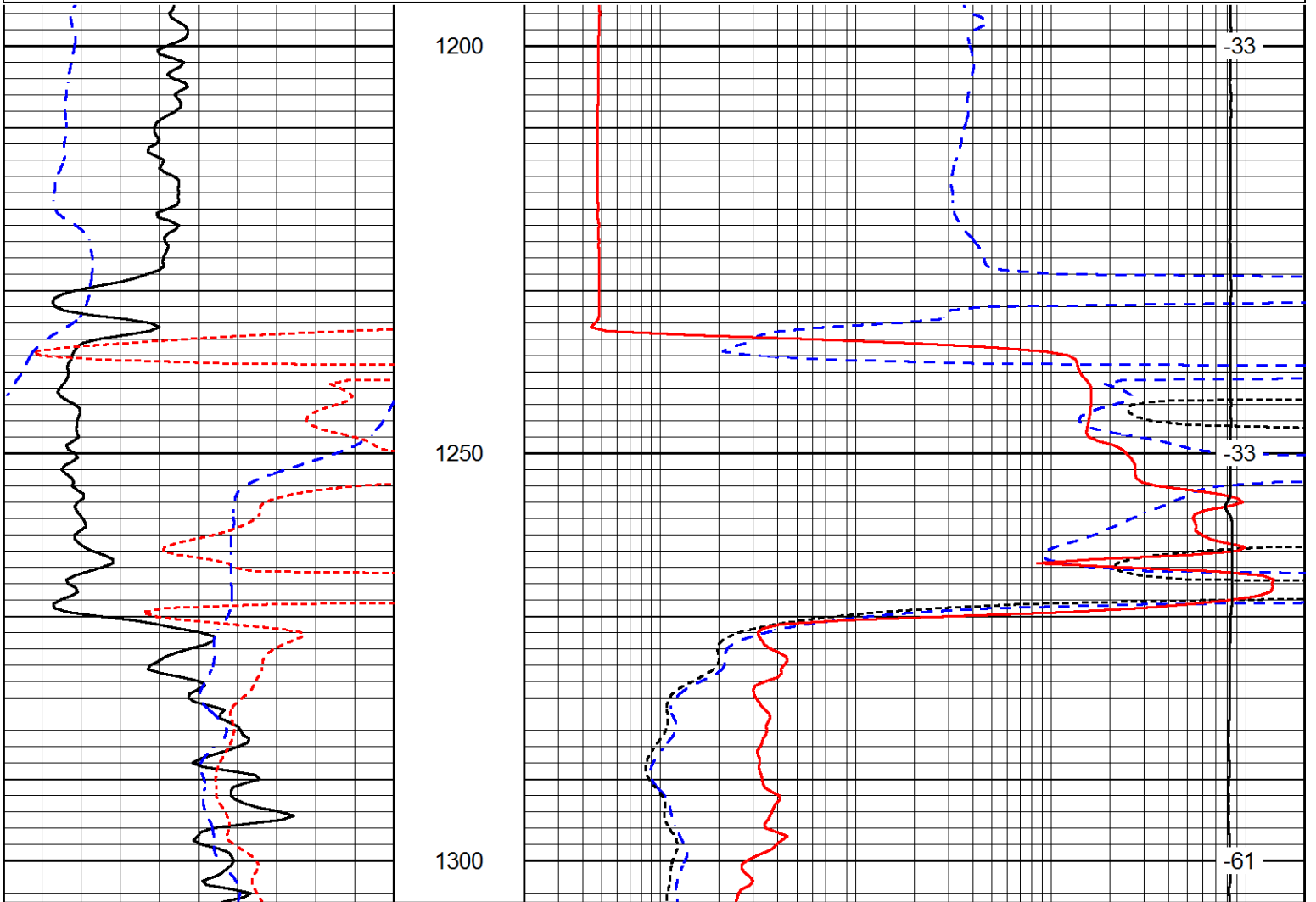
Database File cynosure_dechant_1-18-15-19hd.db
 Dataset Pathname DIL/cynostck
 Presentation Format dil
 Dataset Creation Sun Aug 30 16:53:54 2015
 Charted by Depth in Feet scaled 1:240



0	Gamma Ray (GAPI)	150
-160	RxoRt	40
-200	SP (mV)	0

0.2	Deep Resistivity (Ohm-m)	2000
0.2	Medium Resistivity (Ohm-m)	2000
0.2	Shallow Resistivity (Ohm-m)	2000
10000	Line Tension (lb)	0

LSPD
(ft/min)



0	Gamma Ray (GAPI)	150
-160	RxoRt	40
-200	SP (mV)	0

0.2	Deep Resistivity (Ohm-m)	2000
0.2	Medium Resistivity (Ohm-m)	2000
0.2	Shallow Resistivity (Ohm-m)	2000
10000	Line Tension (lb)	0

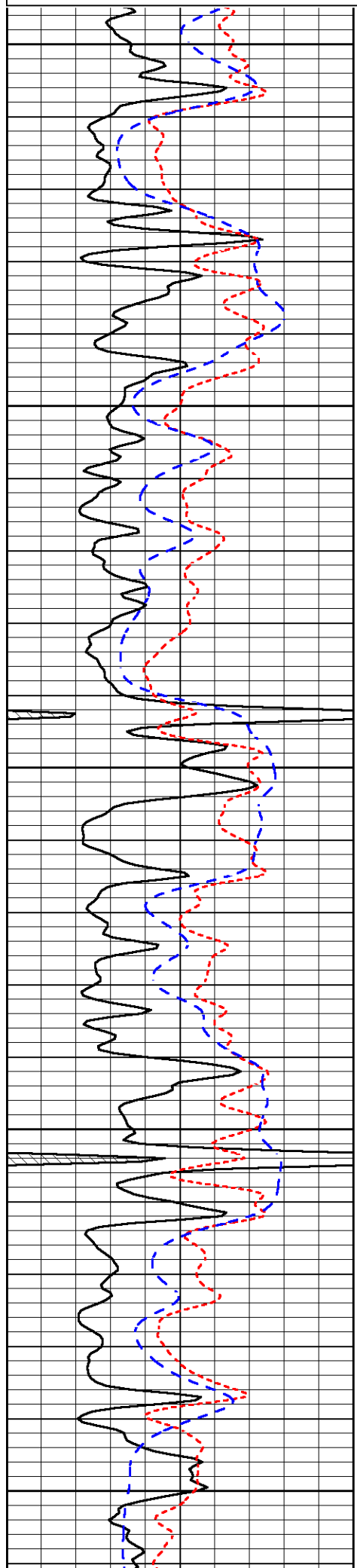
LSPD
(ft/min)

Database File cynosure_dechant_1-18-15-19hd.db
 Dataset Pathname DIL/cynostck
 Presentation Format dil
 Dataset Creation Sun Aug 30 16:53:54 2015
 Charted by Depth in Feet scaled 1:240

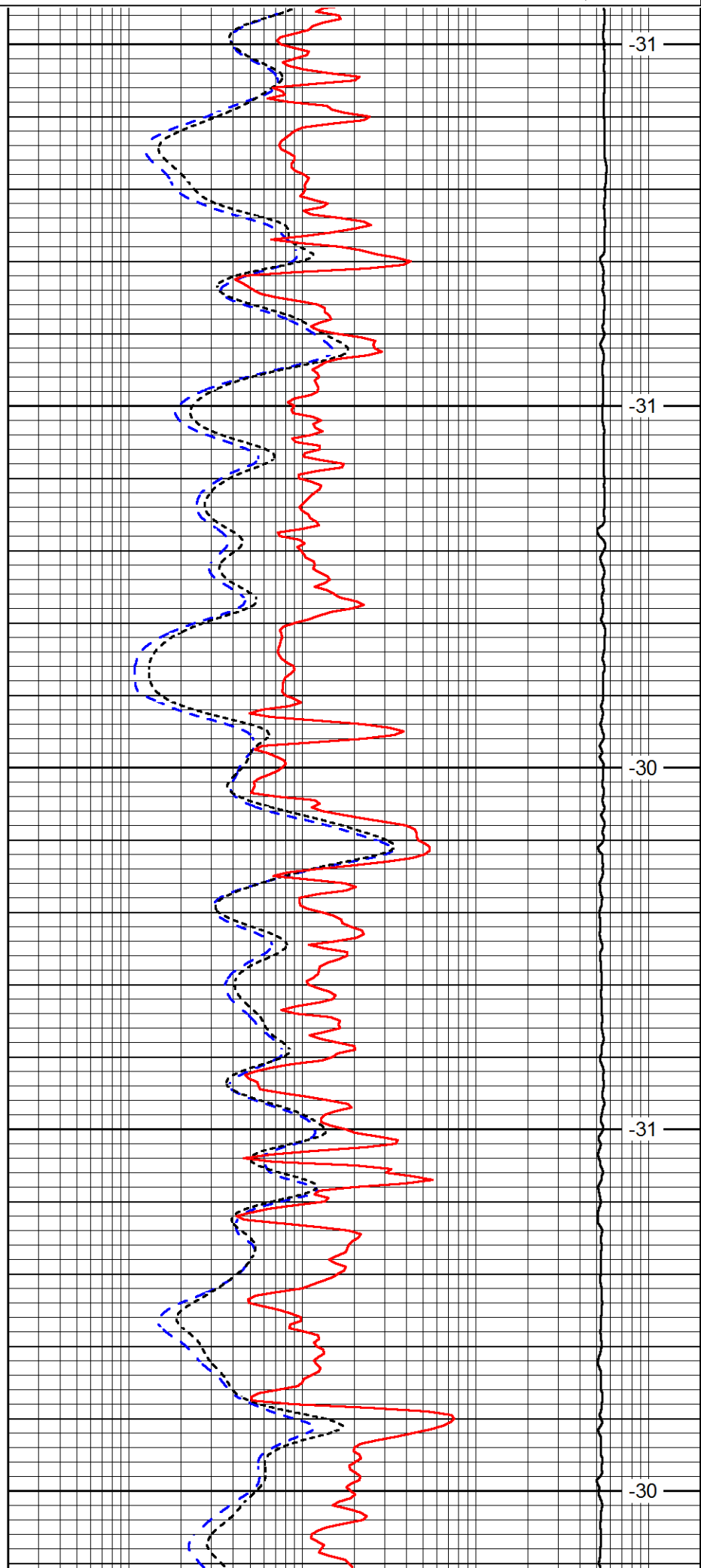
0	Gamma Ray (GAPI)	150
-160	RxoRt	40
-200	SP (mV)	0

0.2	Deep Resistivity (Ohm-m)	2000
0.2	Medium Resistivity (Ohm-m)	2000
0.2	Shallow Resistivity (Ohm-m)	2000
10000	Line Tension (lb)	0

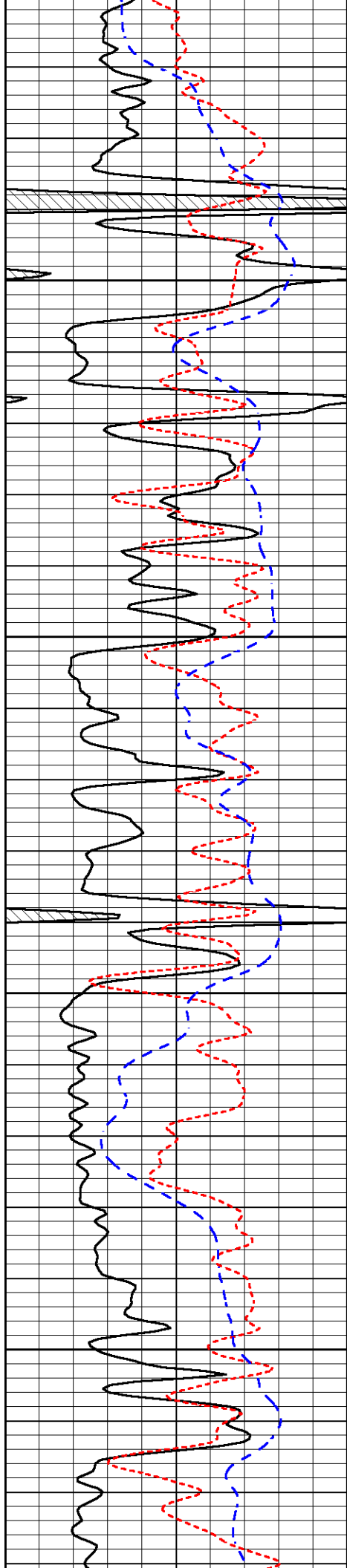
LSPD
(ft/min)



3000
3050
3100
3150
3200



-31
-31
-30
-31
-30

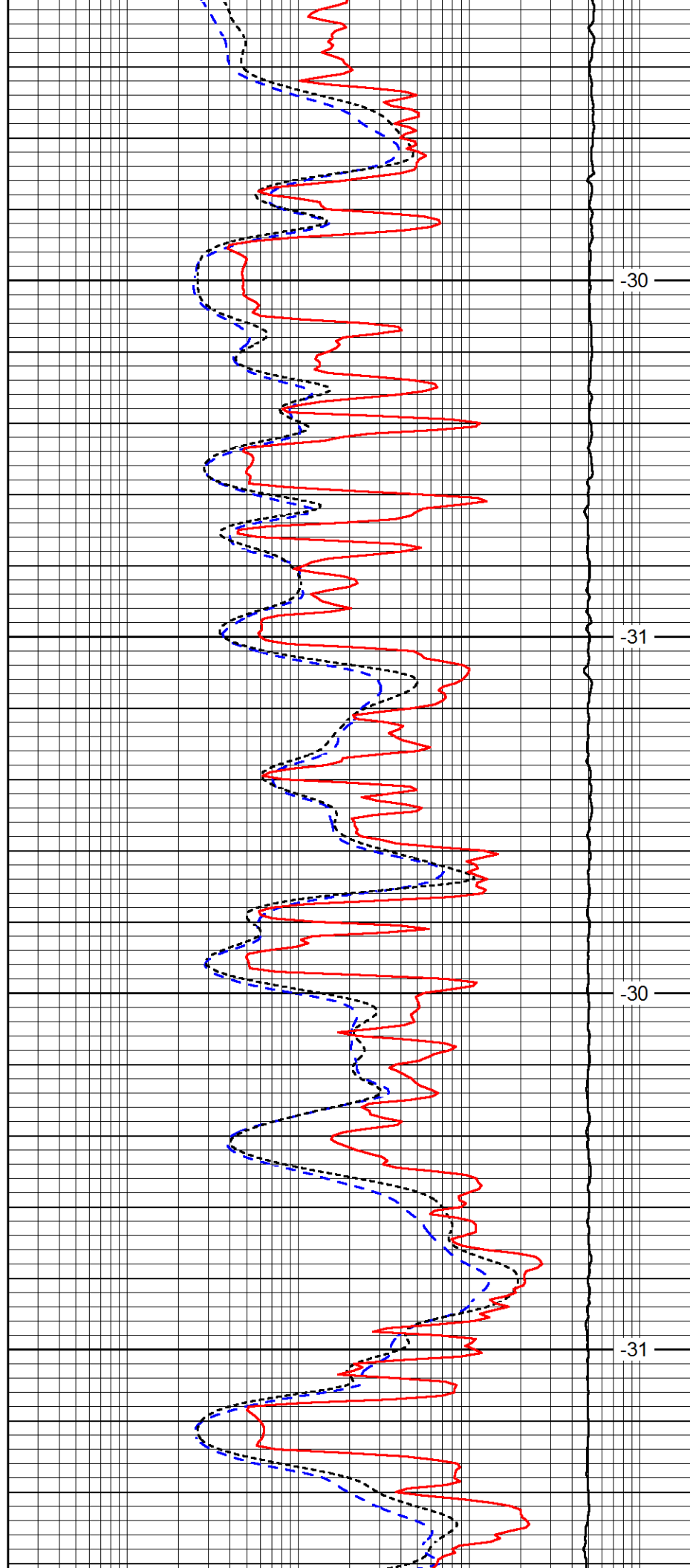


3250

3300

3350

3400

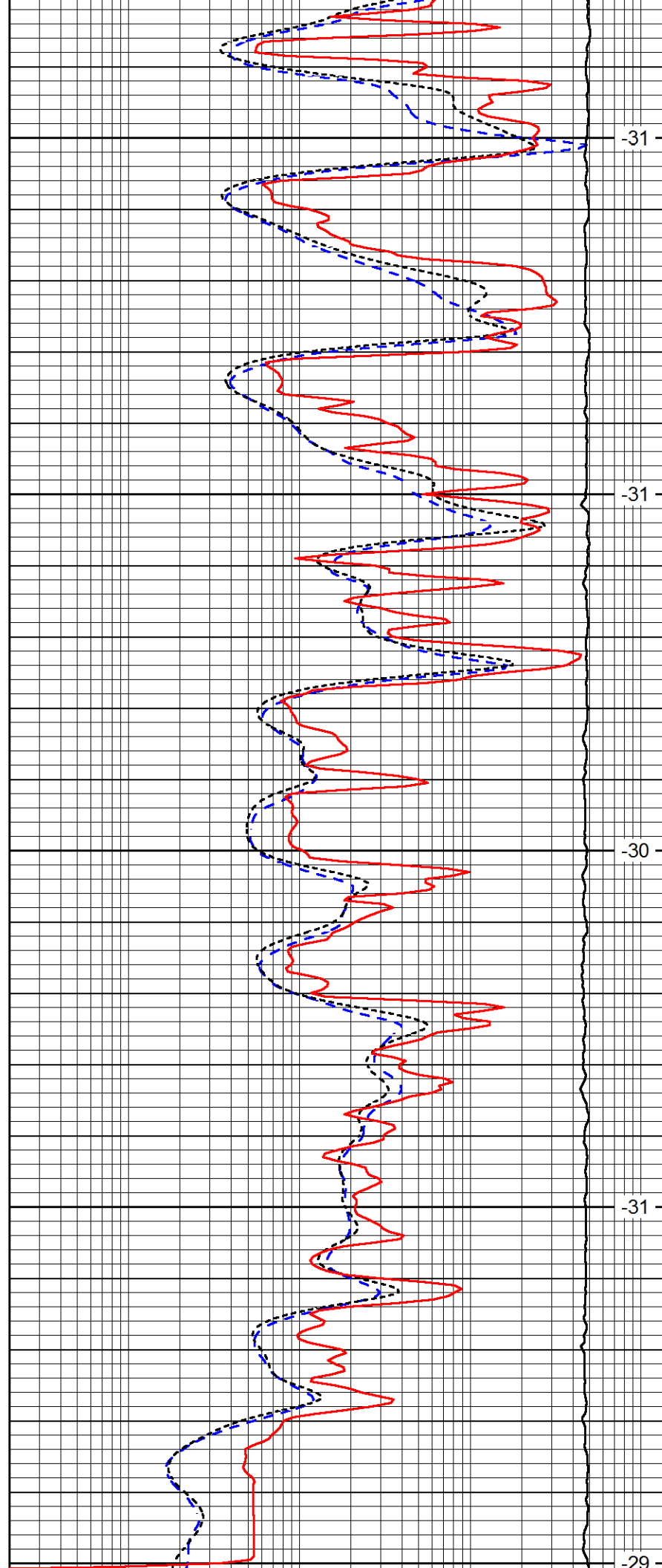
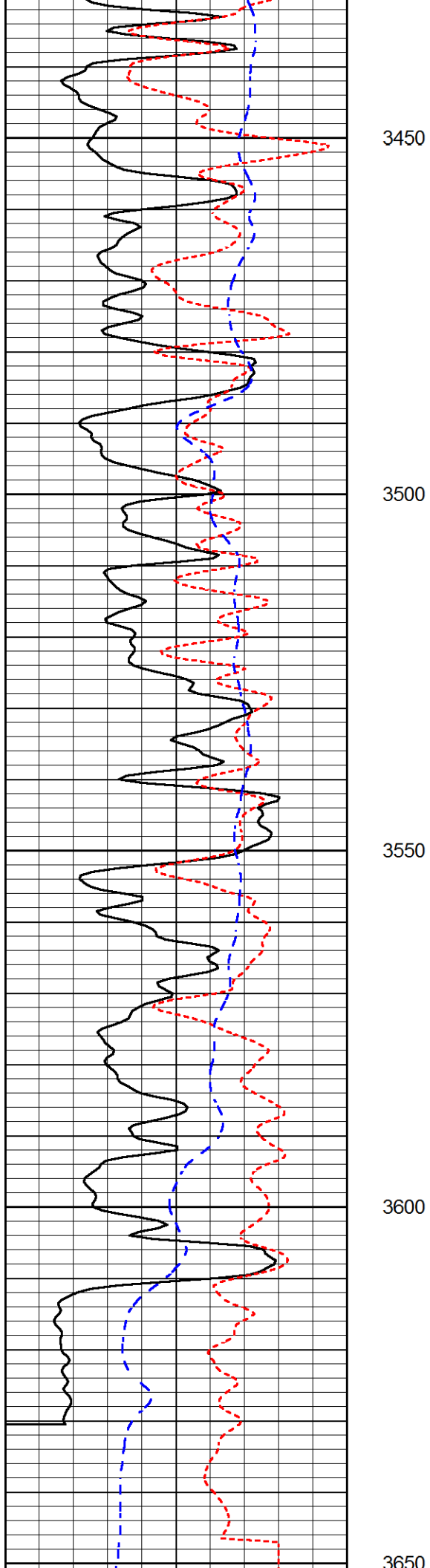


-30

-31

-30

-31



0	Gamma Ray (GAPI)	150
-160	RxoRt	40
-200	SP (mV)	0

0.2	Deep Resistivity (Ohm-m)	2000
0.2	Medium Resistivity (Ohm-m)	2000
0.2	Shallow Resistivity (Ohm-m)	2000
10000	Line Tension (lb)	0

LSPD
(ft/min)