



**MIDWEST SURVEYS**  
 LOGGING - PERFORATING - CONSULTING SERVICES  
 P.O. Box 68, Osawatomie, KS 66064  
 913.755.2128

**GAMMA RAY / NEUTRON / CCL**

File No. \_\_\_\_\_

Company **Altavista Energy, Inc.**

Well **Knoche No. A-28**

Field **Block**

County **Miami** State **Kansas**

Location **3380' FSL & 4220' FEL  
SE-NE-SW-NW**

Other Services  
**Perforate**

Sec. **16** Twp. **18S** Rge. **24E** Elevation **913'**

Permanent Datum **GL** Log Measured From **GL** Drilling Measured From **GL**

Date **10-02-2017**

Run Number **One**

Depth Driller **540.0**

Depth Logger **489.0**

Bottom Logged Interval **488.0**

Top Log Interval **20.0**

Fluid Level **Full**

Type Fluid **Water**

Density / Viscosity **NA**

Salinity - PPM Cl **NA**

Max Recorded Temp **NA**

Estimated Cement Top **0.0**

Equipment No. **104** Location **Osawatomie**

Recorded By **Gary Wandsch**

Witnessed By **Doug Evans**

BORE-HOLE RECORD				CASING RECORD			
Run No.	BIT	FROM	TO	SIZE	WGT.	FROM	TO
One	9.875"	0.0	20.0	7.00"	17.0	0.0	20.0
Two	5.625"	20.0	540.0	2.875"	6.5	0.0	523.70
				Baffle	Set	At	491.90

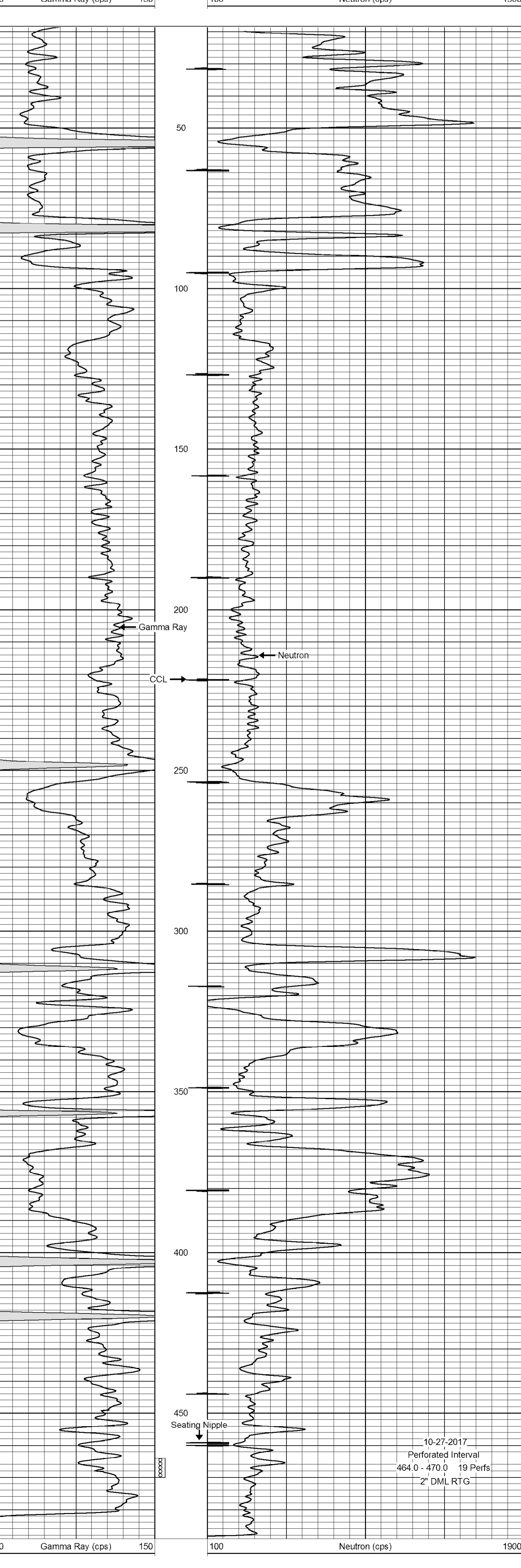
<<< Fold Here >>>

All interpretations are opinions based on inferences from electrical or other measurements and we cannot and do not guarantee the accuracy or correctness of any interpretation, and we shall not, except in the case of gross or willful negligence on our part, be liable or responsible for any loss, costs, damages, or expenses incurred or sustained by anyone resulting from any interpretation made by any of our officers, agents or employees. These interpretations are also subject to our general terms and conditions set out in our current Price Schedule.

**Comments**

Drilling Contractor :  
Town Oilfield Services, Inc.

Database File: knoche 28a.db  
 Dataset Pathname: pass1  
 Presentation Format: gr-n-ccl  
 Dataset Creation: Mon Oct 02 09:32:15 2017 by Log SCH 111116  
 Charted by: Depth in Feet scaled 1:240



10-27-2017  
 Perforated Interval  
 464.0 - 470.0 19 Perfs  
 2" DML RTG