



MICRO LOG

Company L.D. DRILLING, INC.  
Well BIGGS #1-36  
Field WILDCAT  
County THOMAS  
State KANSAS

Company L.D. DRILLING, INC.  
Well BIGGS #1-36  
Field WILDCAT  
County THOMAS  
State KANSAS

Location: 1220' FSL & 1590' FWL  
API #: 15-193-21005-00-00  
Permanent Datum GROUND LEVEL Elevation 3334'  
Log Measured From KELLY BUSHING 5' A.G.L.  
Drilling Measured From KELLY BUSHING  
Elevation  
K.B. 3339'  
D.F. 3337  
G.L. 3334

Date	11/17/17
Run Number	TWO
Depth Driller	4900
Depth Logger	4900
Bottom Logged Interval	4898
Top Log Interval	3500
Casing Driller	8 5/8" @ 332
Casing Logger	332
Bit Size	7 7/8"
Type Fluid in Hole	CHEMICAL MUD
Density / Viscosity	9.2/54
pH / Fluid Loss	10.5/7.8
Source of Sample	FLOWLINE
Rm @ Meas. Temp	1.0@54
Rmt @ Meas. Temp	.75@54
Rmc @ Meas. Temp	1.2@54
Source of Rmf / Rmc	MEASURED
Rm @ BHT	.43@124
Time Circulation Stopped	2 HOURS
Time Logger on Bottom	///
Maximum Recorded Temperature	124F
Equipment Number	4010
Location	HAYS, KANSAS
Recorded By	GUS PFANENSTIEL
Witnessed By	KIM SHOEMAKER

<<< Fold Here >>>

All interpretations are opinions based on inferences from electrical or other measurements and we cannot and do not guarantee the accuracy or correctness of any interpretation, and we shall not, except in the case of gross or willful negligence on our part, be liable or responsible for any loss, costs, damages, or expenses incurred or sustained by anyone resulting from any interpretation made by any of our officers, agents or employees. These interpretations are also subject to our general terms and conditions set out in our current Price Schedule.

Comments

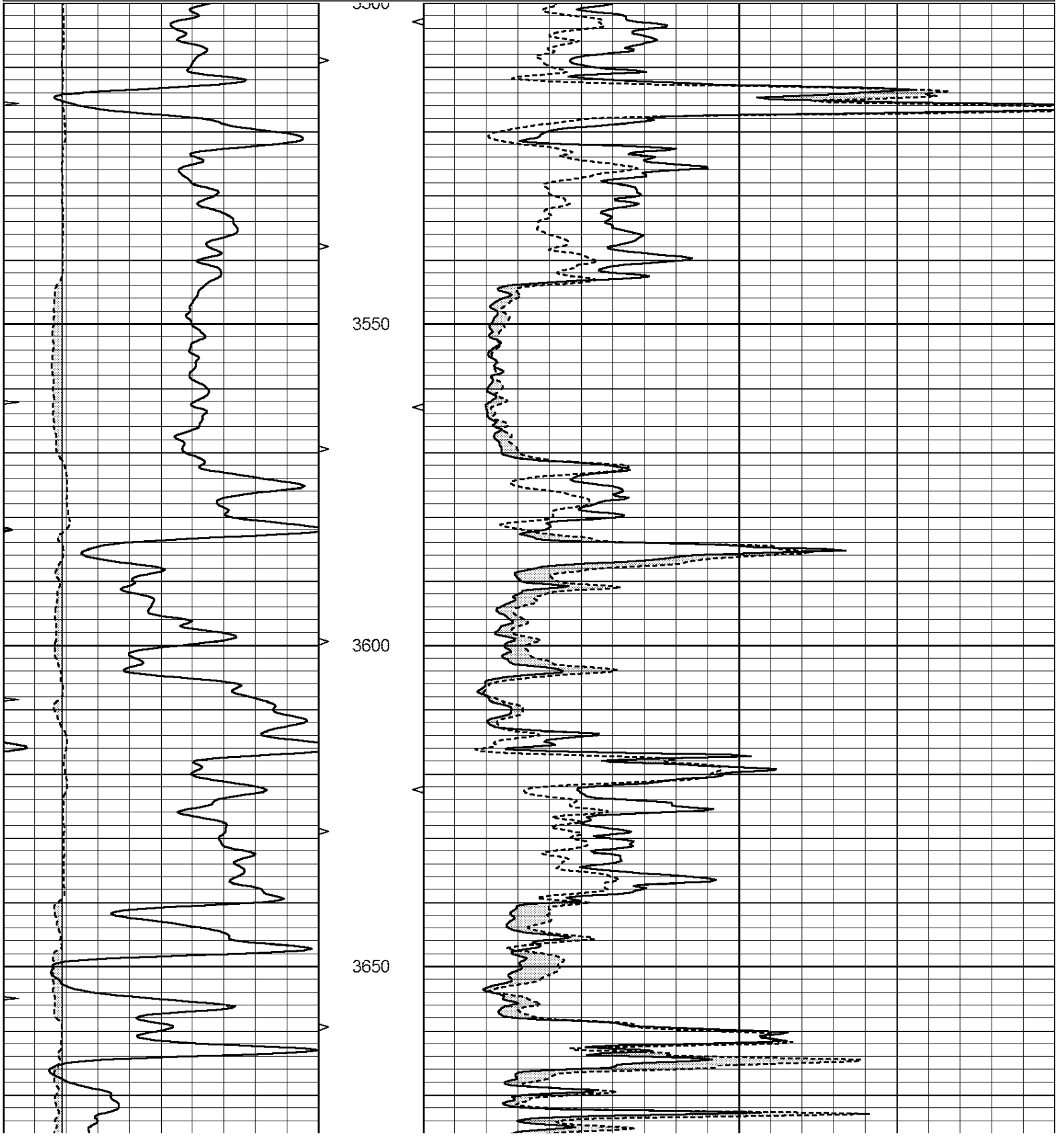
THANK YOU FOR USING ELI WIRELINE, HAYS, KS. (785) 628-6395  
DIRECTIONS  
LEVANT EXIT NORTH 9 MILES TO Z RD.  
WEST 4 MILES, 1 SOUTH, WEST INTO.

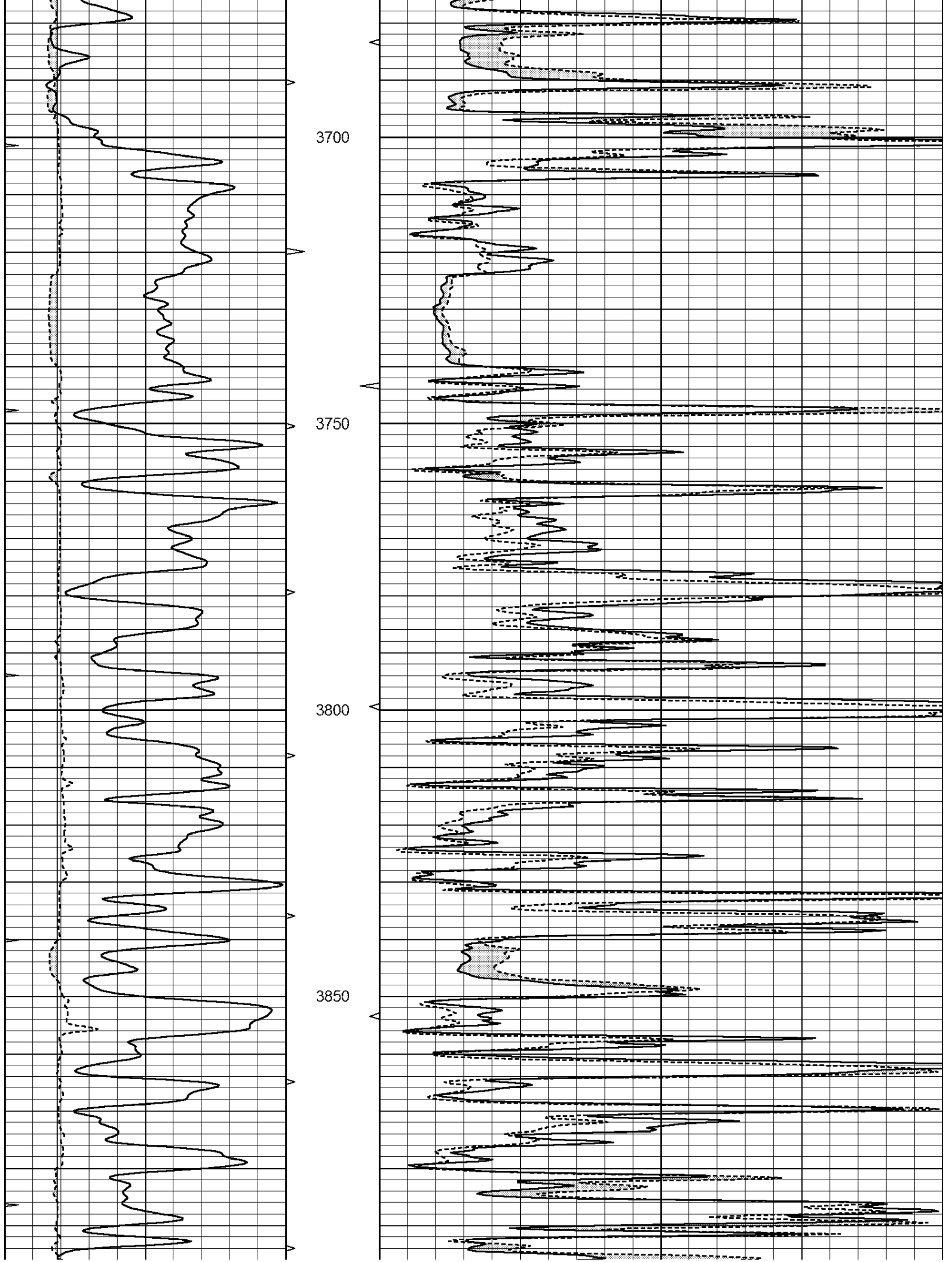


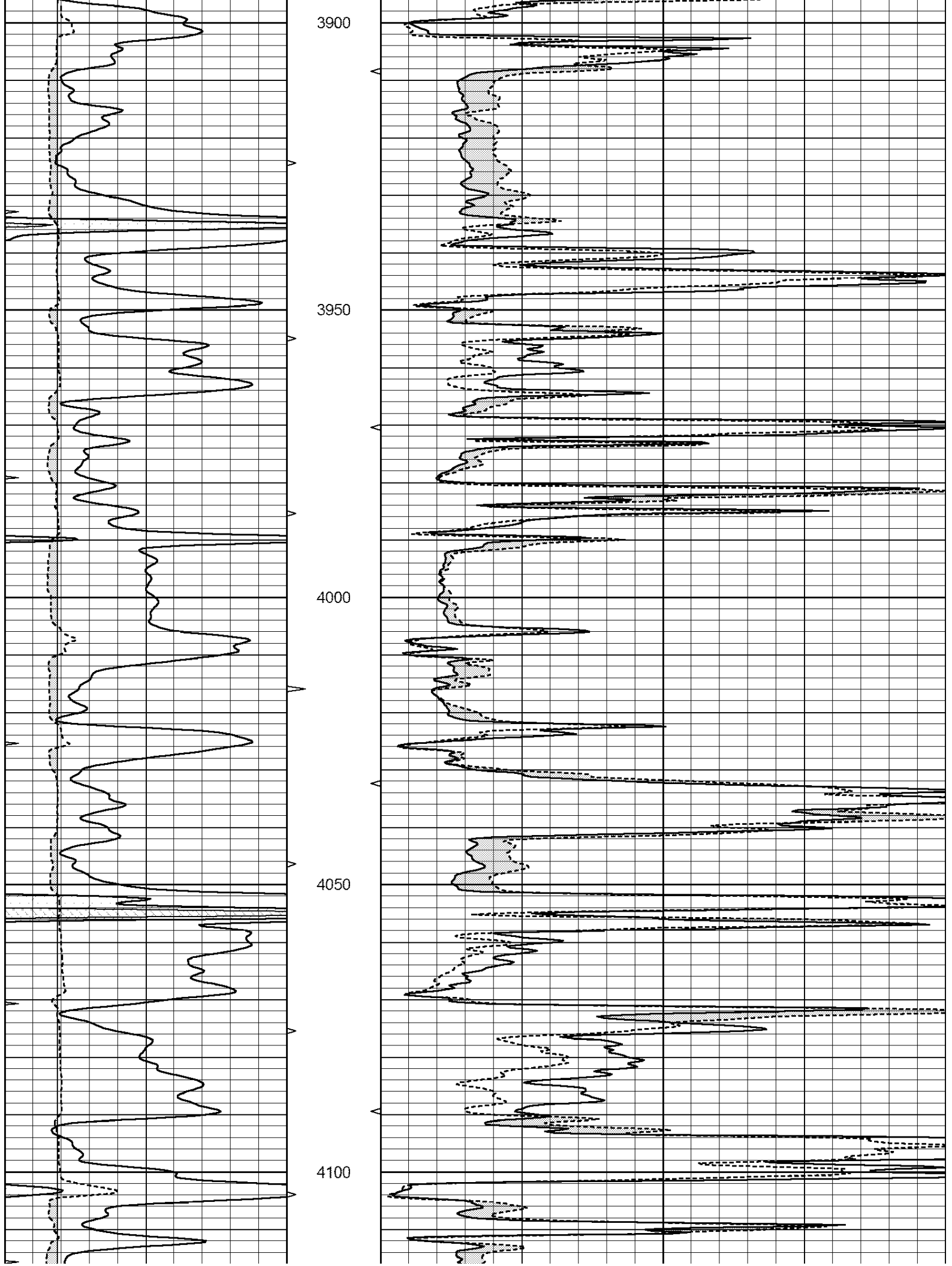
MAIN PASS

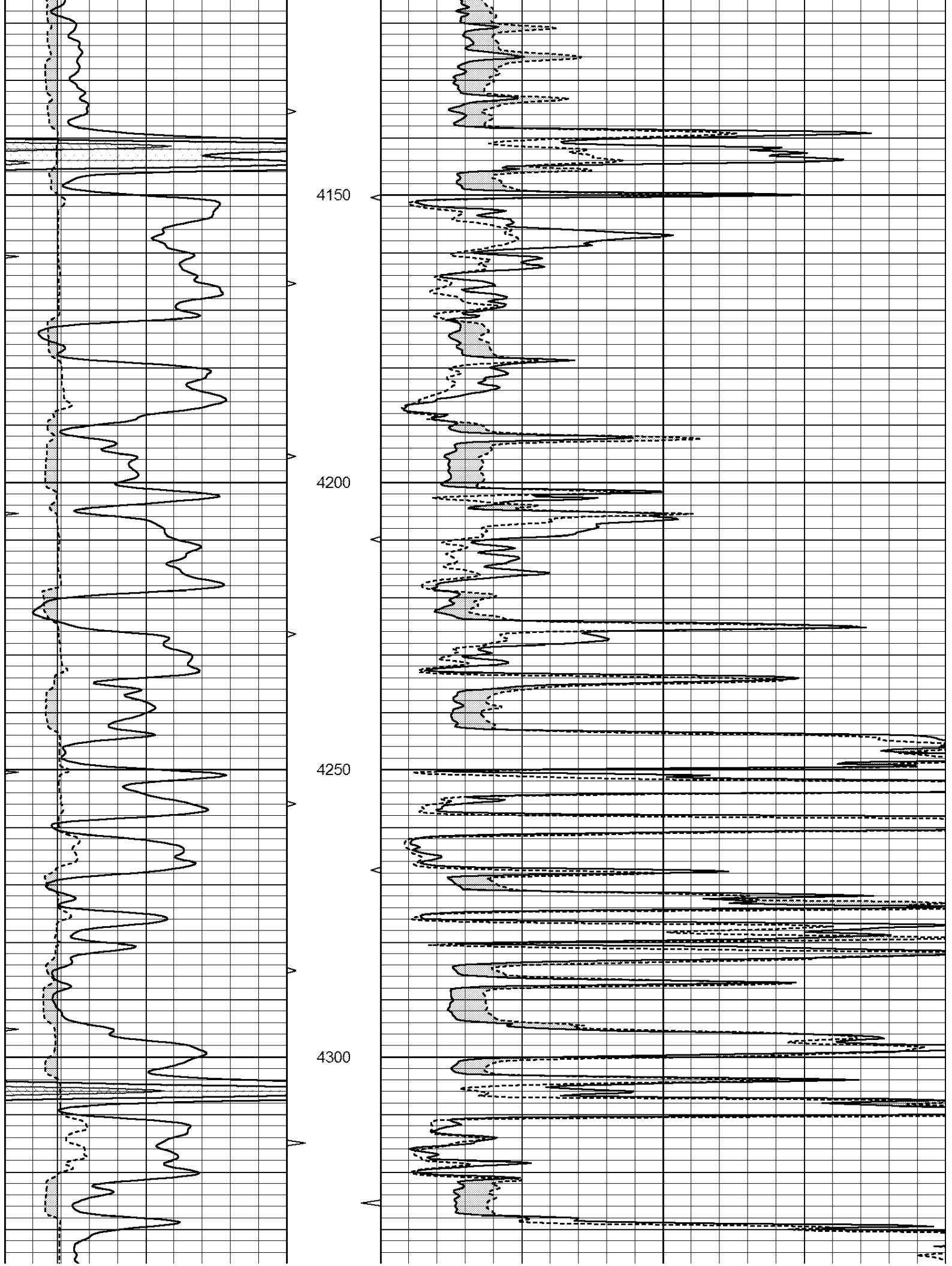
Database File: 2109ddn.db  
 Dataset Pathname: pass5.1  
 Presentation Format: \_micro  
 Dataset Creation: Fri Nov 17 06:04:57 2017 by Calc Open-Cased 090629  
 Charted by: Depth in Feet scaled 1:240

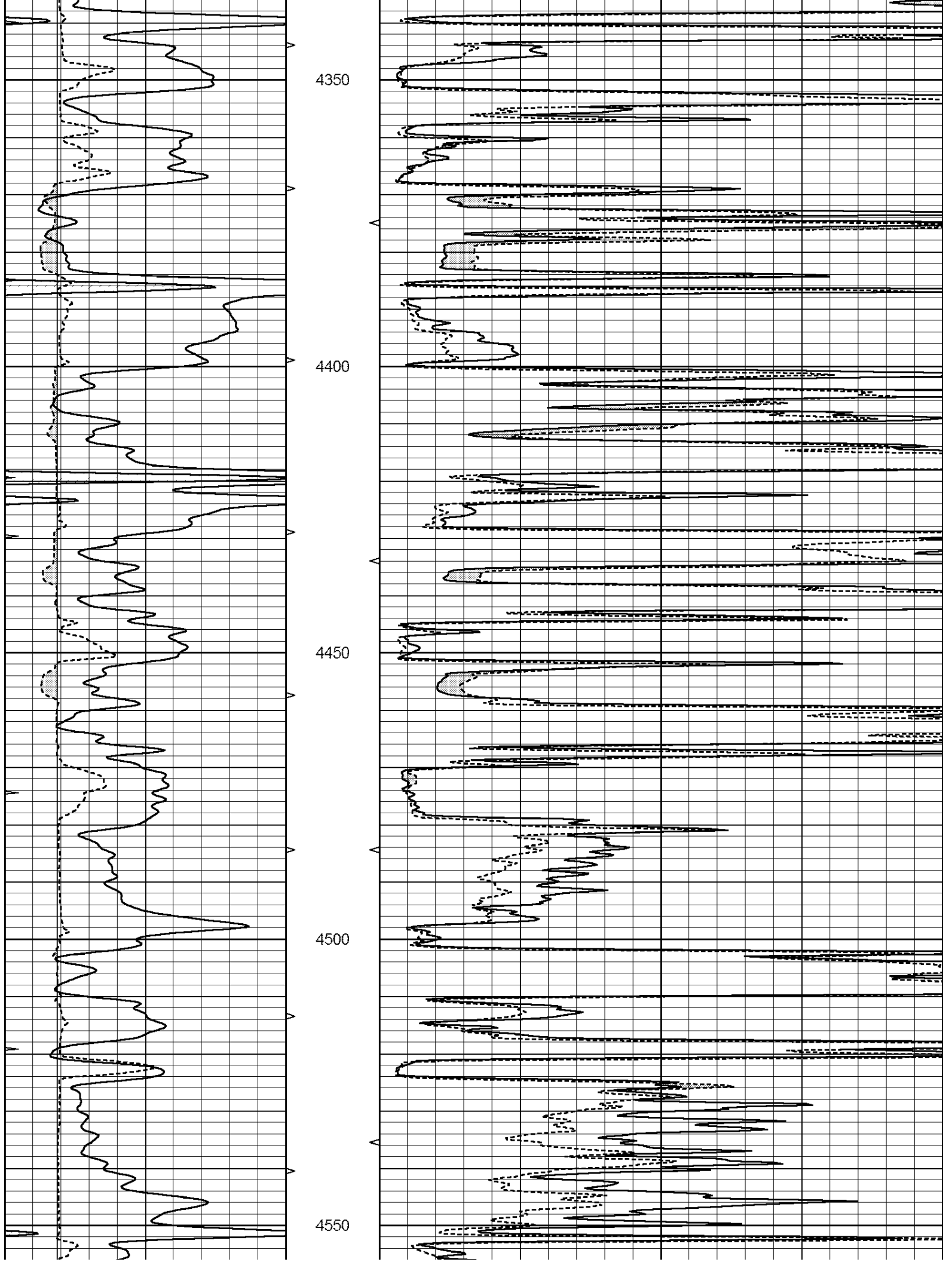
0	GAMMA RAY (GAPI)	150	ABHV	0	MEL1.5 (Ohm-m)	40
6	CALIPER (in)	16	10 (ft3)	0	MEL2.0 (Ohm-m)	40
0	MINMK	20	TBHV			
			0 (ft3)	10		

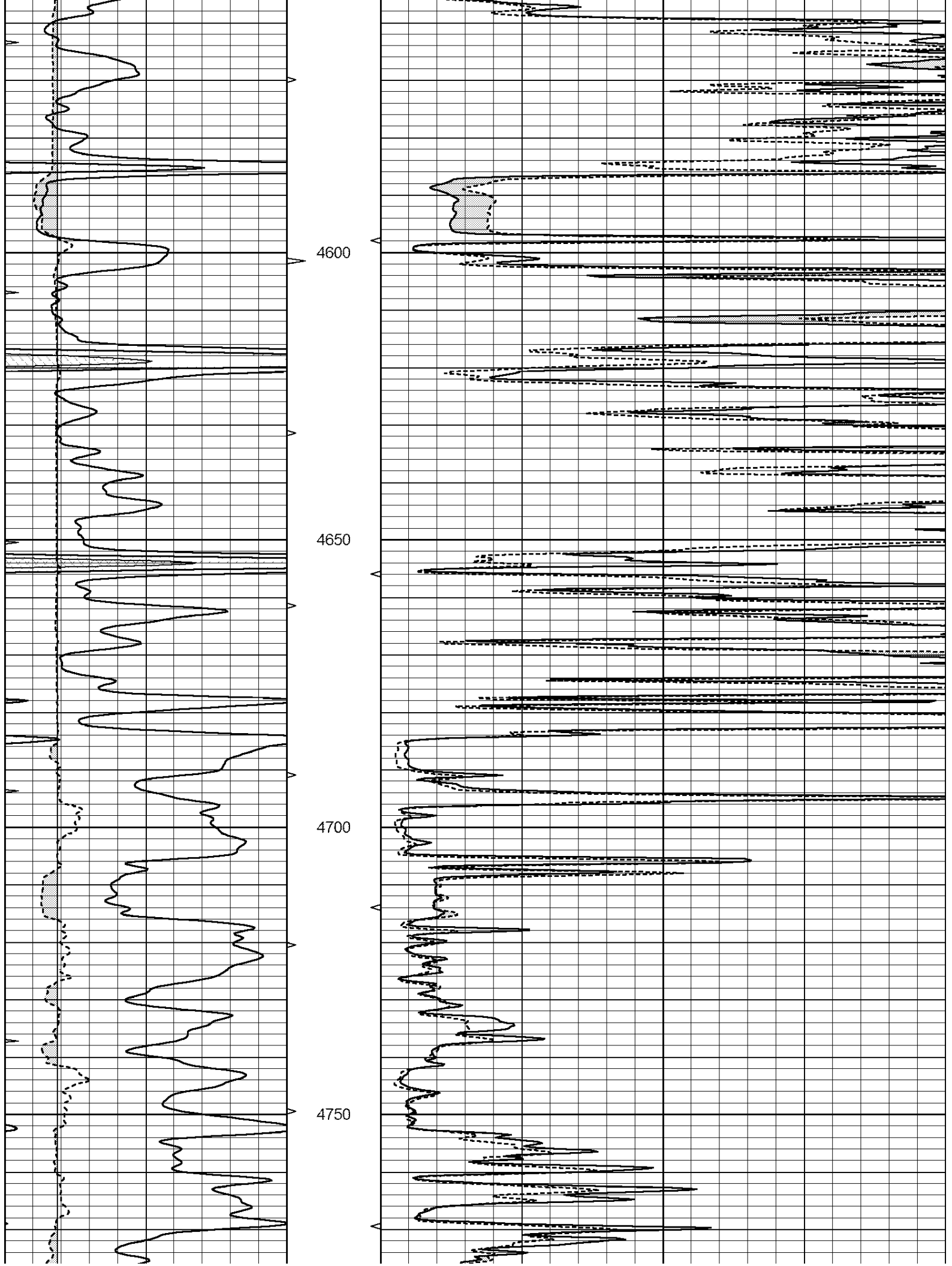


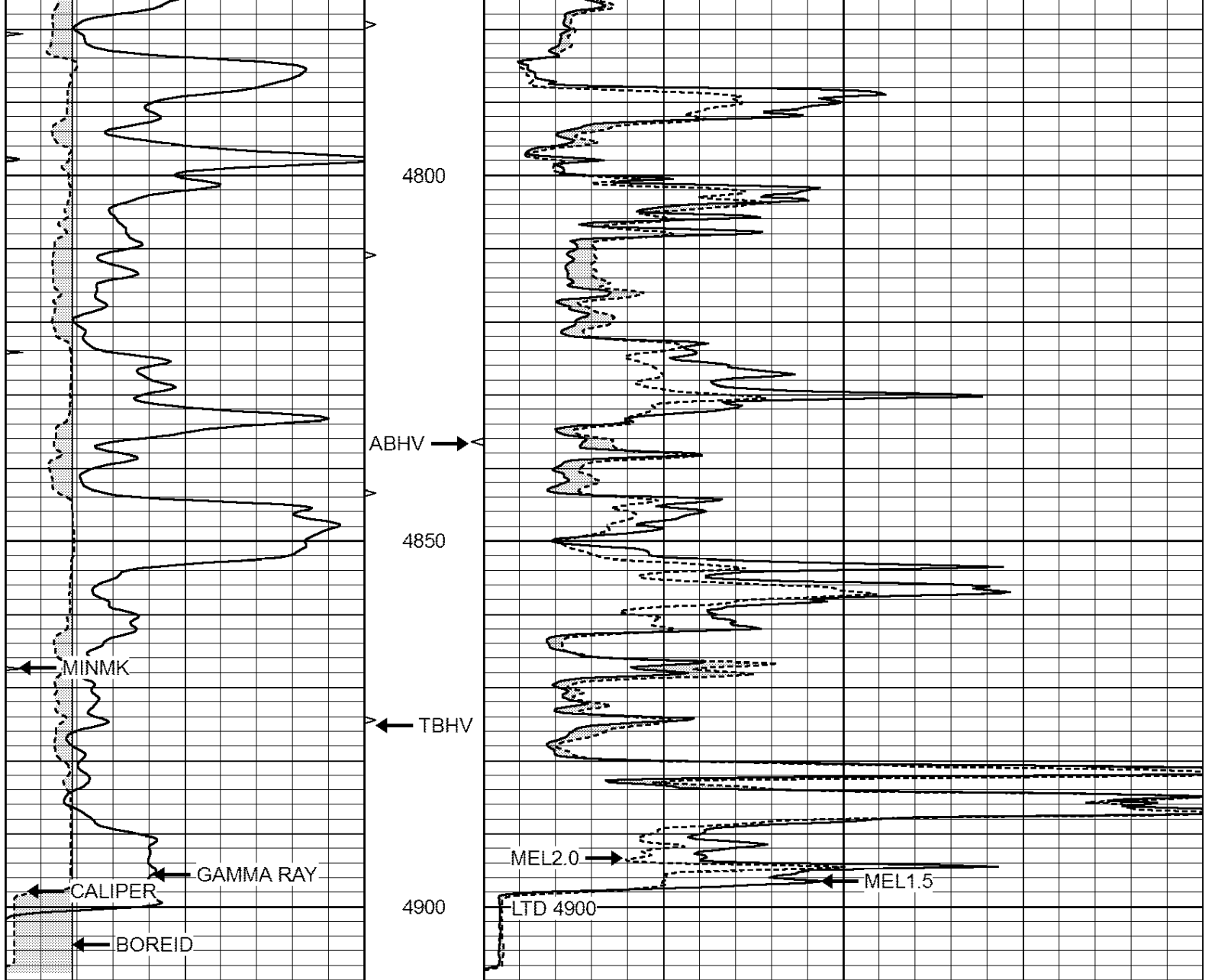




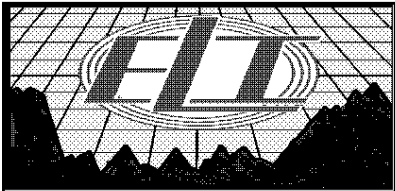








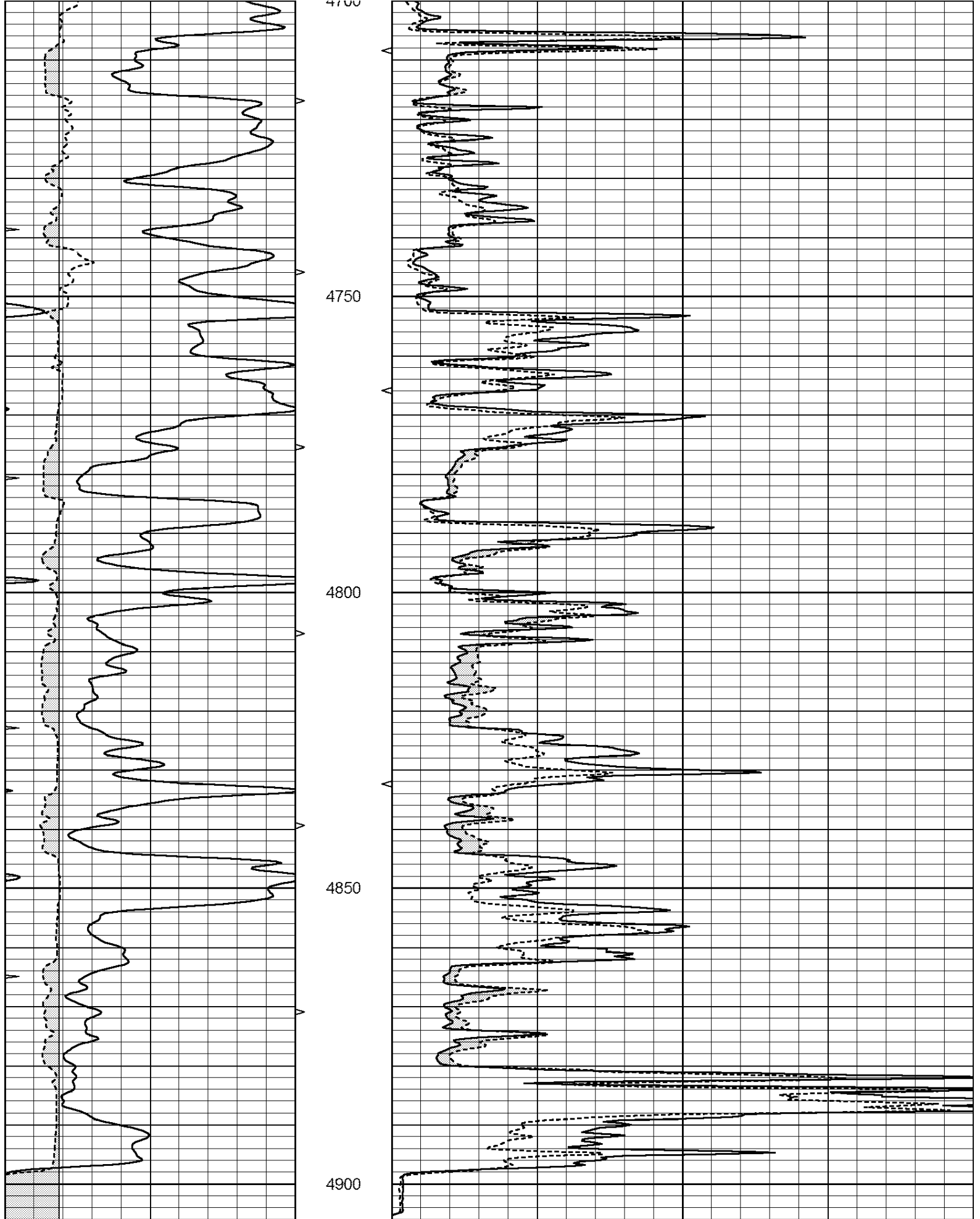
0	GAMMA RAY (GAPI)	150	ABHV	0	MEL1.5 (Ohm-m)	40
6	CALIPER (in)	16	10 (ft3)	0	MEL2.0 (Ohm-m)	40
0	MINMK	20	TBHV			
			0 (ft3)	10		



# REPEAT SECTION

Database File: 2109ddn.db  
 Dataset Pathname: pass4.1  
 Presentation Format: \_micro  
 Dataset Creation: Fri Nov 17 06:07:49 2017 by Calc Open-Cased 090629  
 Charted by: Depth in Feet scaled 1:240

0	GAMMA RAY (GAPI)	150	ABHV	0	MEL1.5 (Ohm-m)	40
6	CALIPER (in)	16	10 (ft3)	0	MEL2.0 (Ohm-m)	40
0	MINMK	20	TBHV			
			0 (ft3)	10		



0	GAMMA RAY (GAPI)	150	ABHV	0	MEL1.5 (Ohm-m)	40
6	CALIPER (in)	16	10 (ft3)	0 0	MEL2.0 (Ohm-m)	40
0	MINMK	20	TBHV			

## Calibration Report

Database File: 2109ddn.db  
 Dataset Pathname: pass4.1  
 Dataset Creation: Fri Nov 17 06:07:49 2017 by Calc Open-Cased 090629

## MICRO Calibration Report

Serial Number: MICRO6  
 Tool Model: PROBE  
 Performed: Wed Aug 16 17:13:39 2017

Caliper Calibration:	Gain=3.960	Offset=4.551
	Low Cal	High Cal
References	7.000	14.000
Readings	0.555	2.323

1.5" Calibration:	Gain=39.075	Offset=-0.400
	Low Cal	High Cal
References	0.000	20.000
Readings	0.004	1.196

2" Calibration:	Gain=45.000	Offset=-1.000
	Low Cal	High Cal
References	0.000	20.000
Readings	0.006	0.913

## Gamma Ray Calibration Report

Serial Number: GR2  
 Tool Model: OPEN  
 Performed: Wed Aug 16 17:13:40 2017

Calibrator Value:	1.0	GAPI
Background Reading:	0.0	cps
Calibrator Reading:	1.0	cps
Sensitivity:	0.3800	GAPI/cps