



**COMPENSATED  
DENSITY/NEUTRON  
LOG**

Company L.D. DRILLING, INC.  
Well BIGGS #1-36  
Field WILD CAT  
County THOMAS  
State KANSAS

Company L.D. DRILLING, INC.  
Well BIGGS #1-36  
Field WILD CAT  
County THOMAS State KANSAS

Location: 1220' FSL & 1590' FWL  
API #: 15-193-21005-00-00  
Other Services DIL/MEL  
Permanent Datum GROUND LEVEL Elevation 3334'  
Log Measured From KELLY BUSHING 5' A.G.L.  
Drilling Measured From KELLY BUSHING  
Elevation  
K.B. 3339'  
D.F. 3337  
G.L. 3334

Date	11/17/17
Run Number	ONE
Depth Driller	4900
Depth Logger	4900
Bottom Logged Interval	4876
Top Log Interval	3500
Casing Driller	8 5/8" @ 332
Casing Logger	332
Bit Size	7 7/8"
Type Fluid in Hole	CHEMICAL MUD
Density / Viscosity	9.2/54
pH / Fluid Loss	10.5/7.8
Source of Sample	FLOWLINE
Rm @ Meas. Temp	1.0@54
Rmt @ Meas. Temp	.75@54
Rmc @ Meas. Temp	1.2@54
Source of Rmf / Rmc	MEASURED
Rm @ BHT	.43@124
Time Circulation Stopped	2 HOURS
Time Logger on Bottom	///
Maximum Recorded Temperature	124F
Equipment Number	4010
Location	HAYS, KANSAS
Recorded By	GUS PFANENSTIEL
Witnessed By	KIM SHOEMAKER

<<< Fold Here >>>

All interpretations are opinions based on inferences from electrical or other measurements and we cannot and do not guarantee the accuracy or correctness of any interpretation, and we shall not, except in the case of gross or willful negligence on our part, be liable or responsible for any loss, costs, damages, or expenses incurred or sustained by anyone resulting from any interpretation made by any of our officers, agents or employees. These interpretations are also subject to our general terms and conditions set out in our current Price Schedule.

**Comments**

THANK YOU FOR USING ELI WIRELINE, HAYS, KS. (785) 628-6395

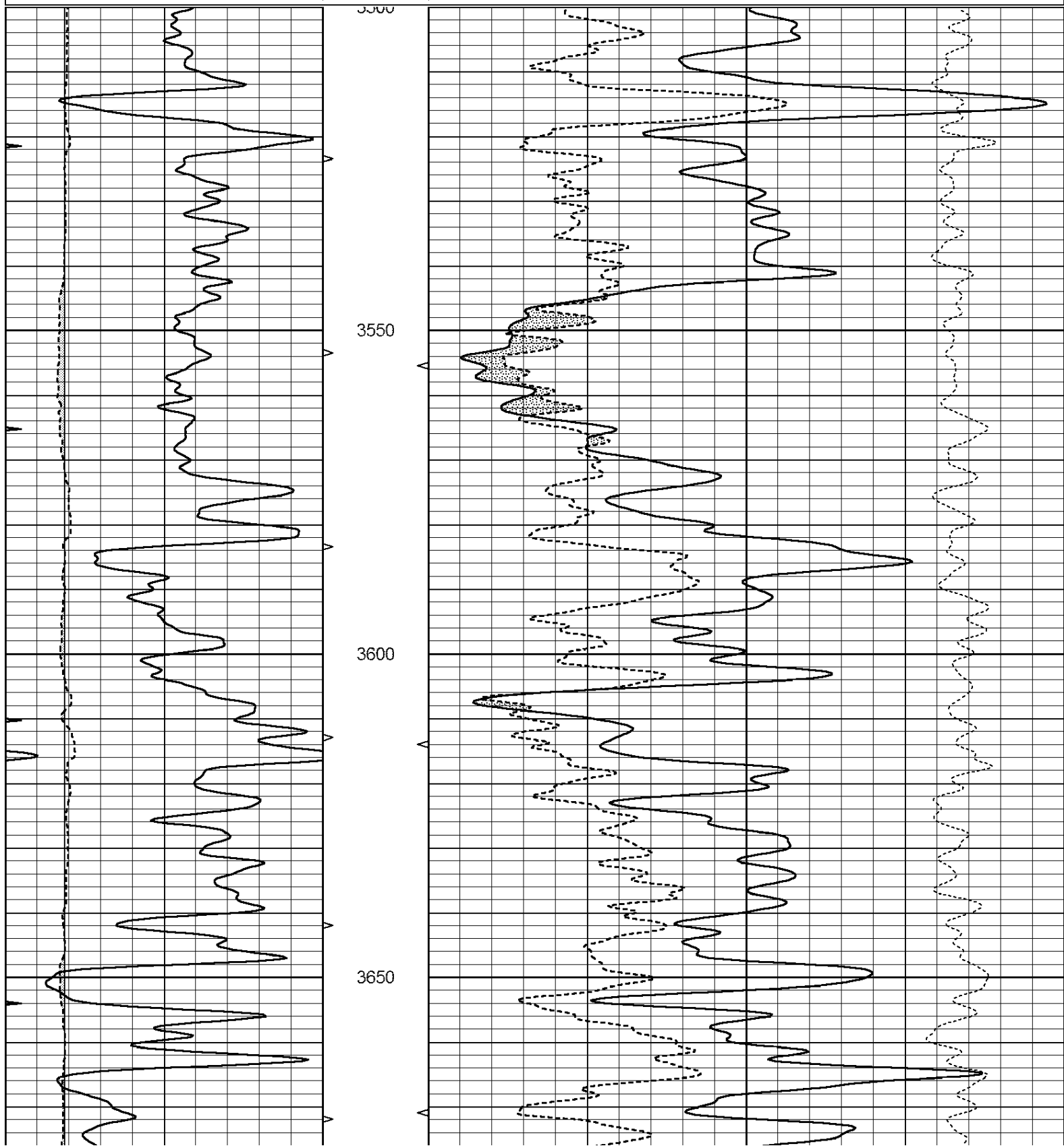
DIRECTIONS  
LEVANT EXIT NORTH 9 MILES TO Z RD.  
WEST 4 MILES, 1 SOUTH, WEST INTO.

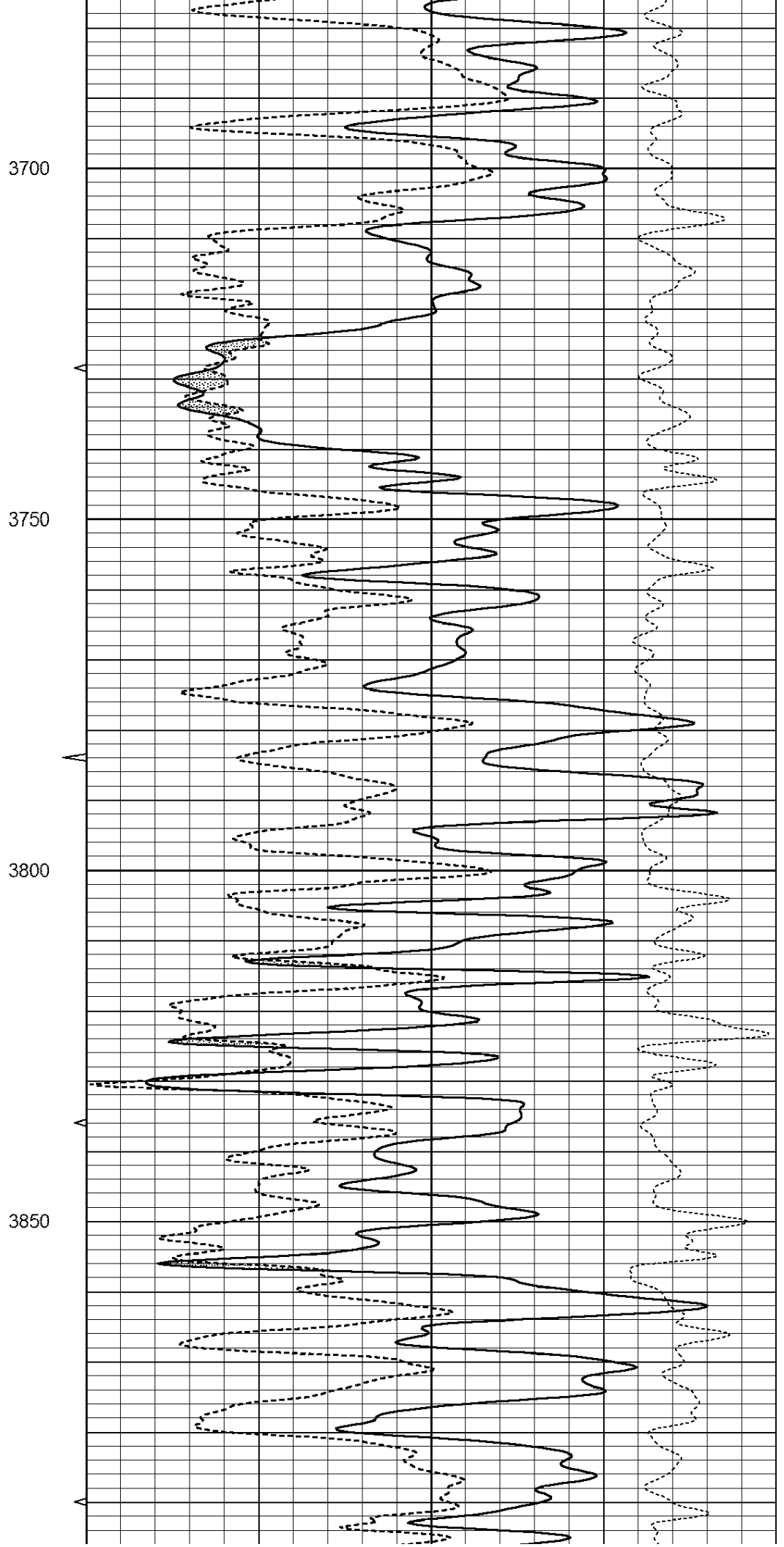
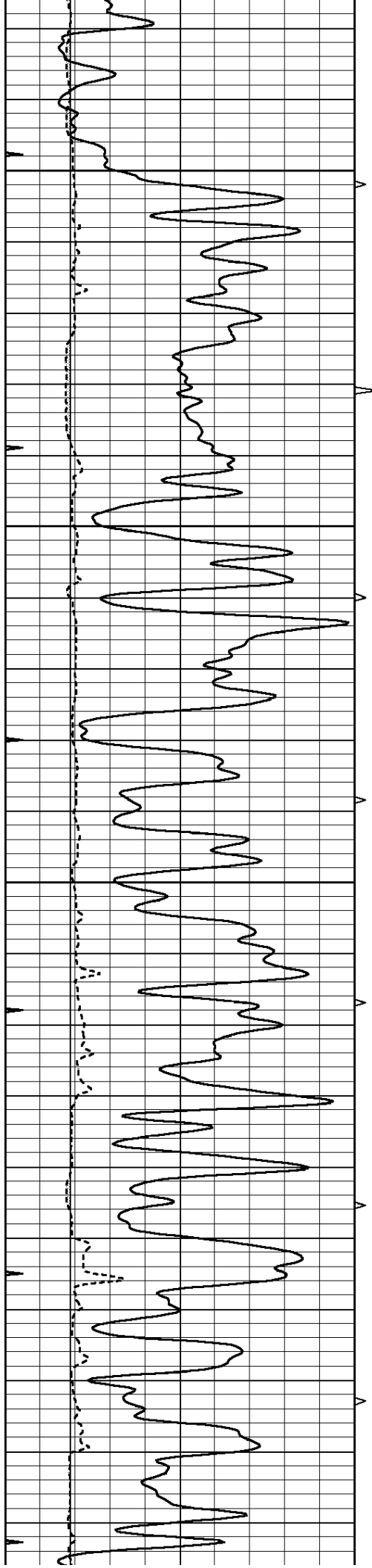


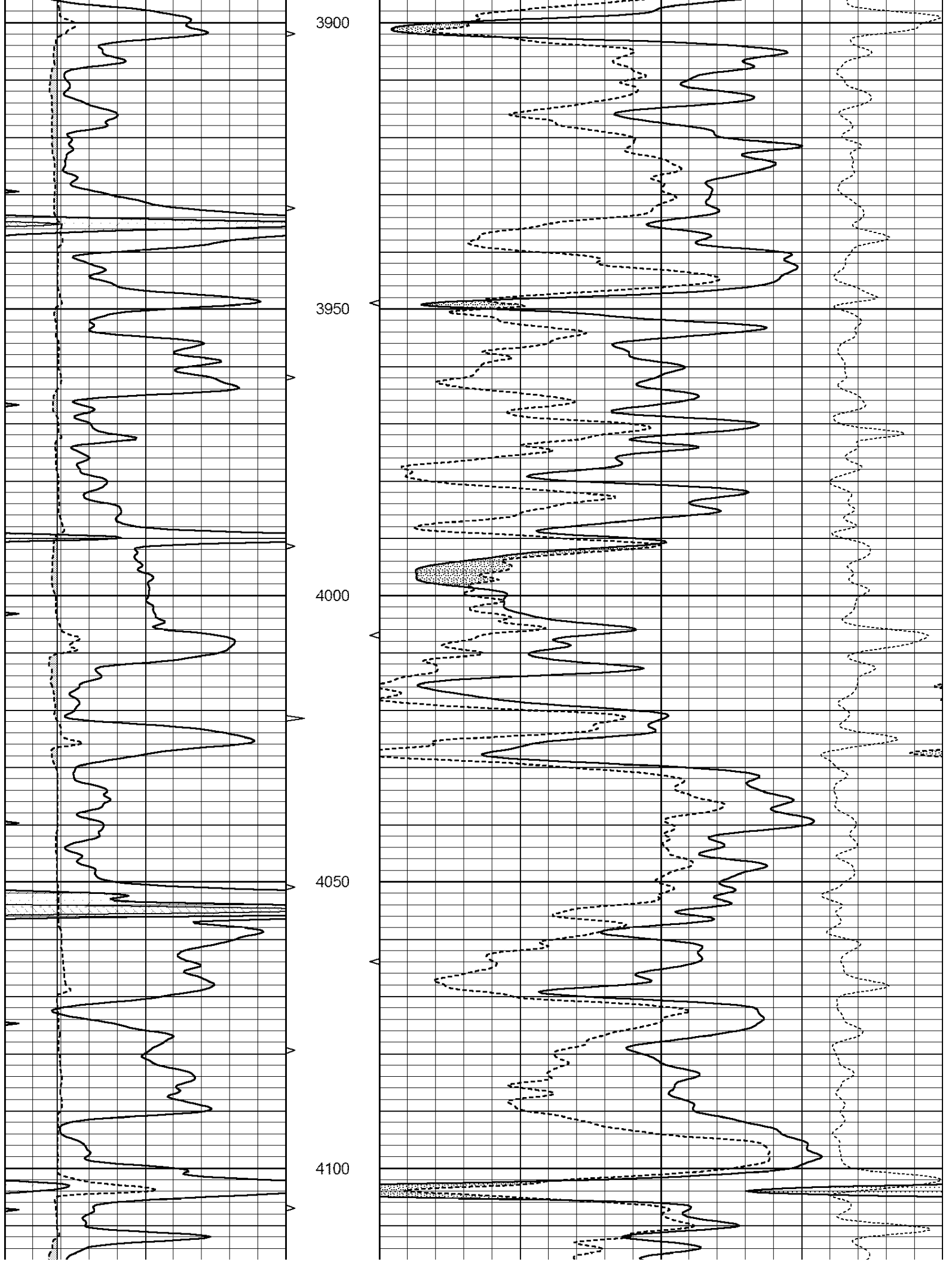
**MAIN PASS**

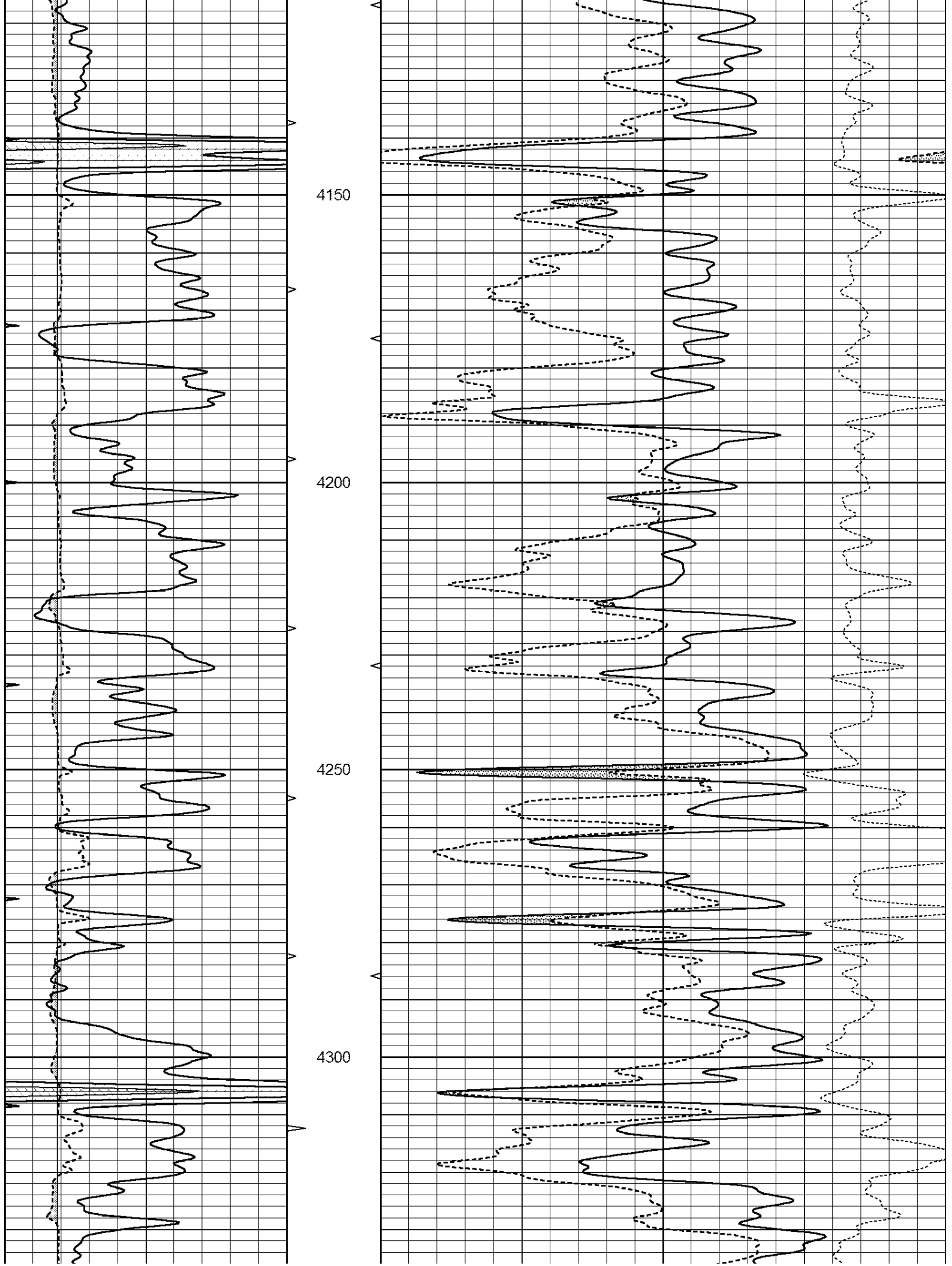
Database File: 2109ddn.db  
 Dataset Pathname: pass3.1  
 Presentation Format: den\_neu  
 Dataset Creation: Fri Nov 17 05:26:11 2017  
 Charted by: Depth in Feet scaled 1:240

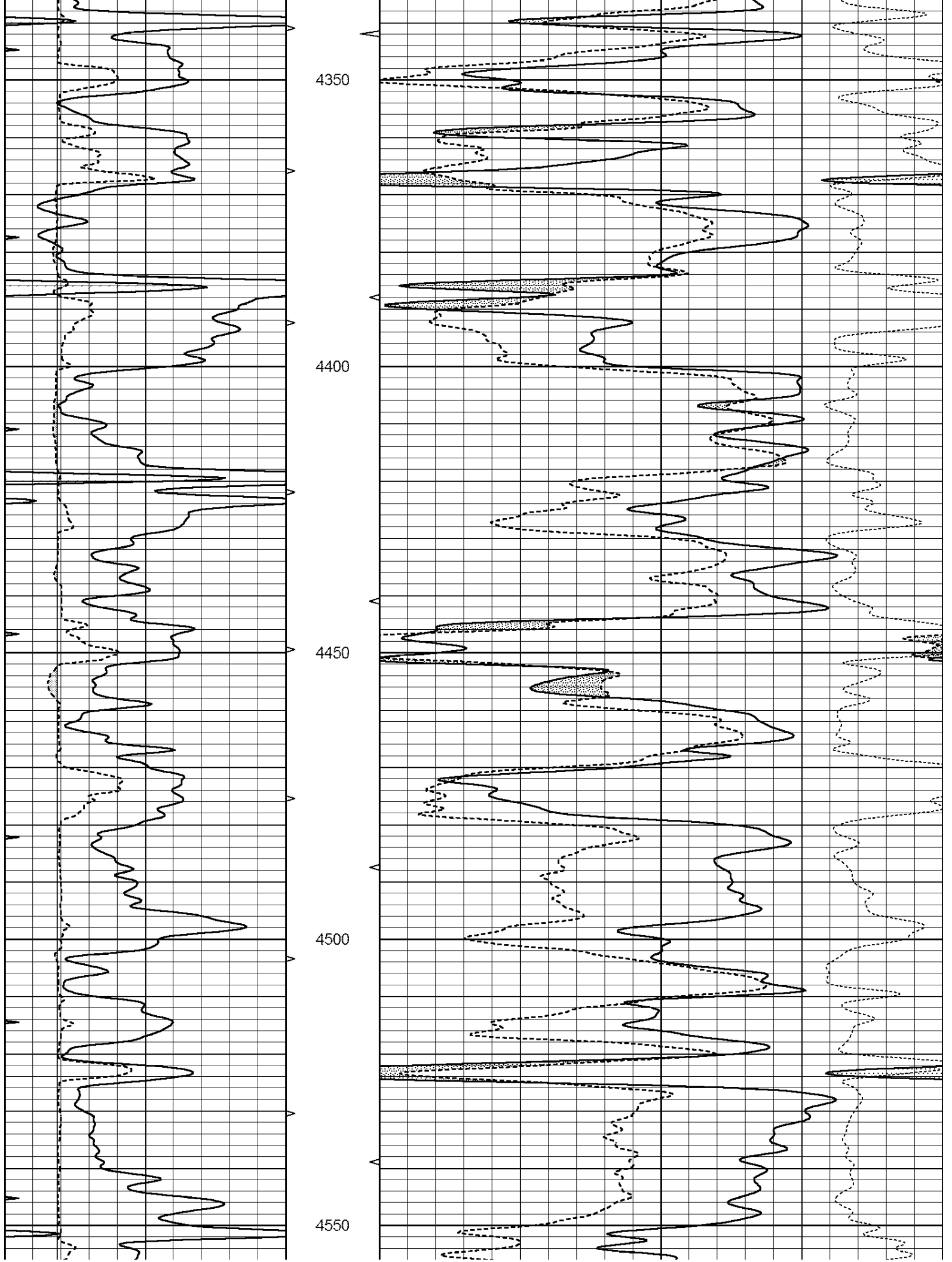
0	GAMMA RAY (GAPI)	150	ABHV	30	COMPENSATED DENSITY (pu)	-10
6	CALIPER (in)	16	10 (ft3)	0 30	COMPENSATED NEUTRON (pu)	-10
0	MINMK	20	TBHV		-0.25 CORRECTION (g/cc)	0.25
			0 (ft3)	10		

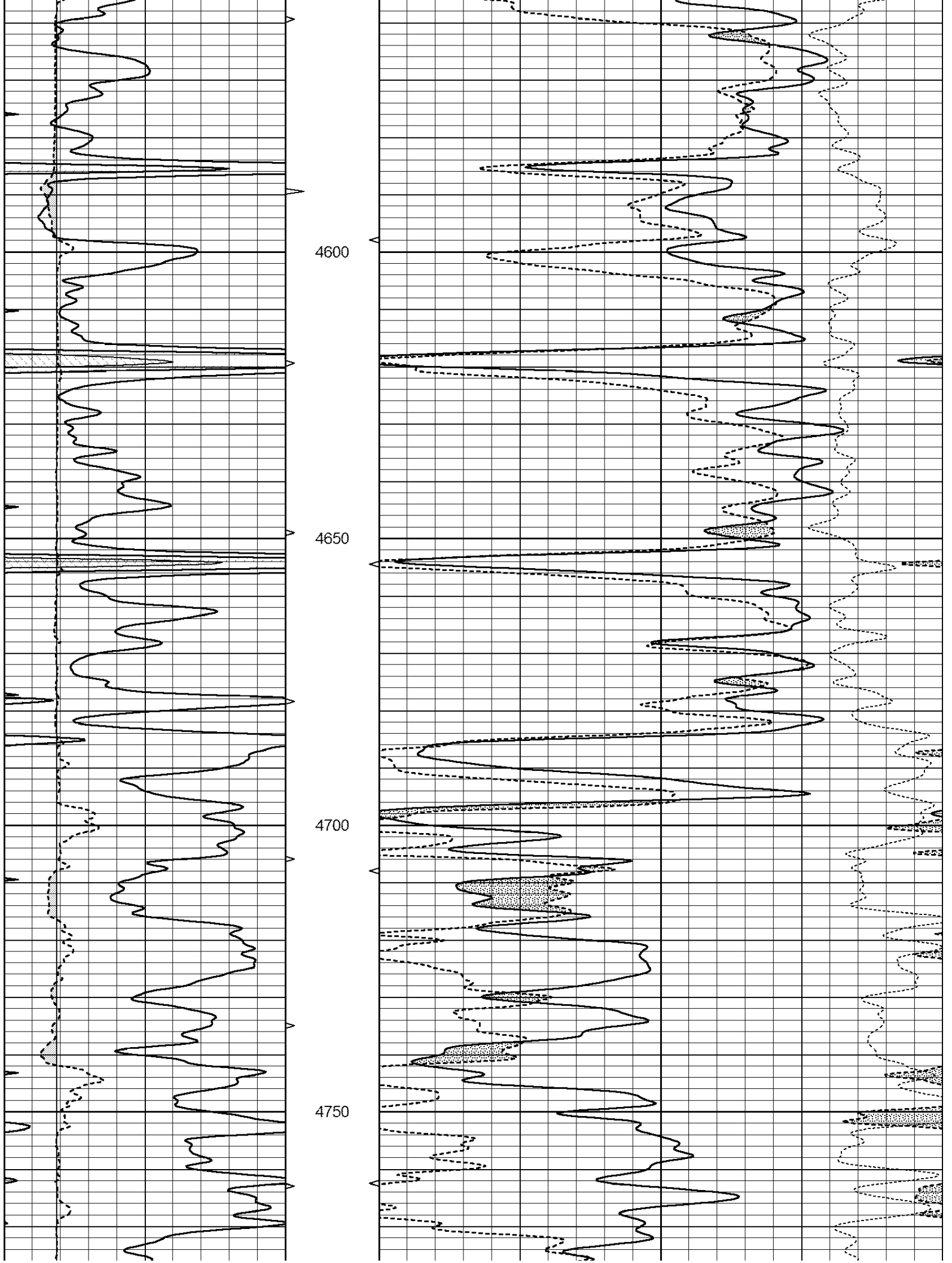


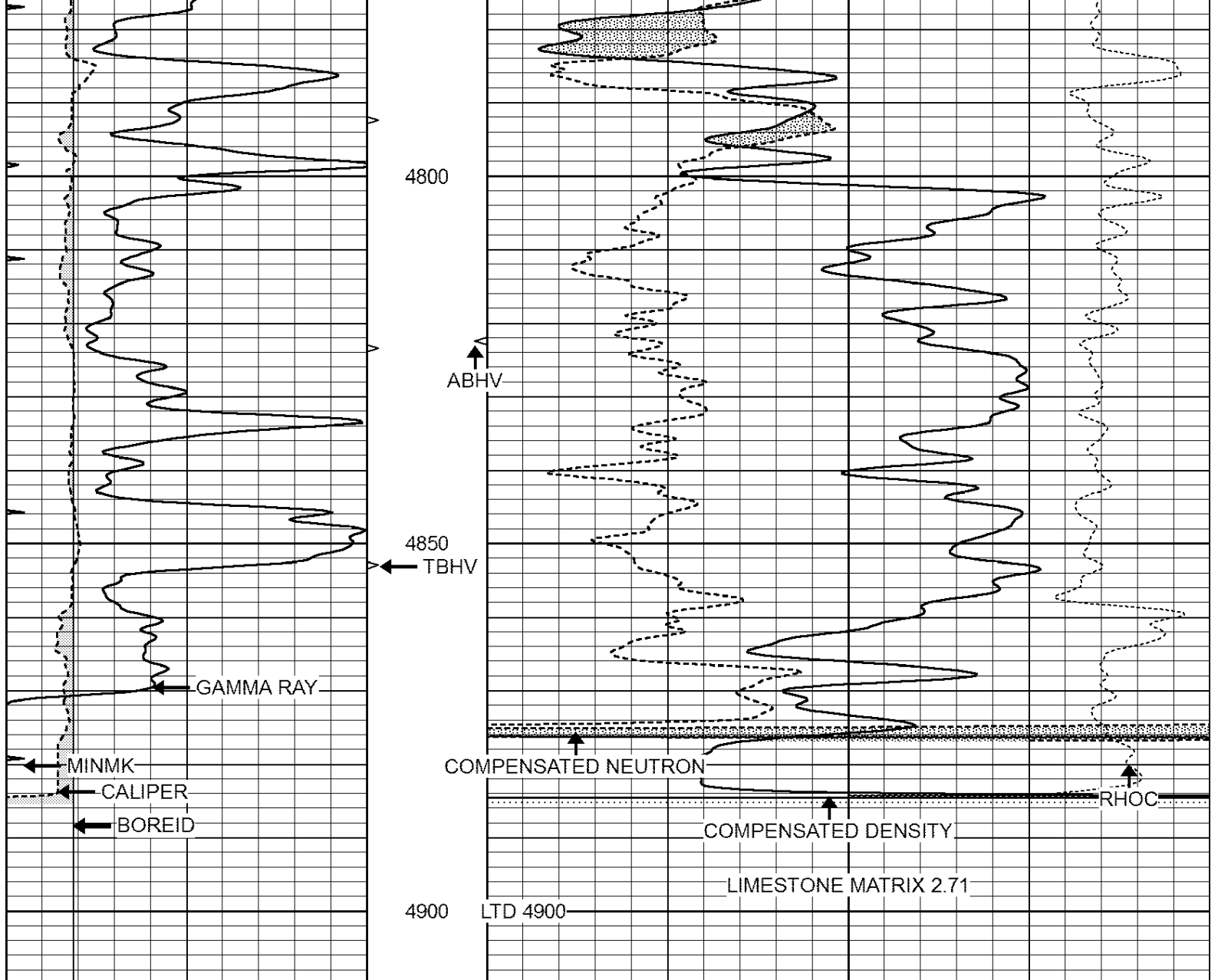




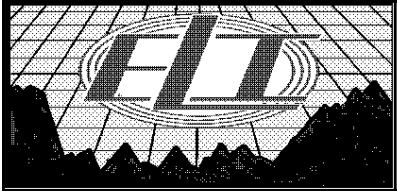








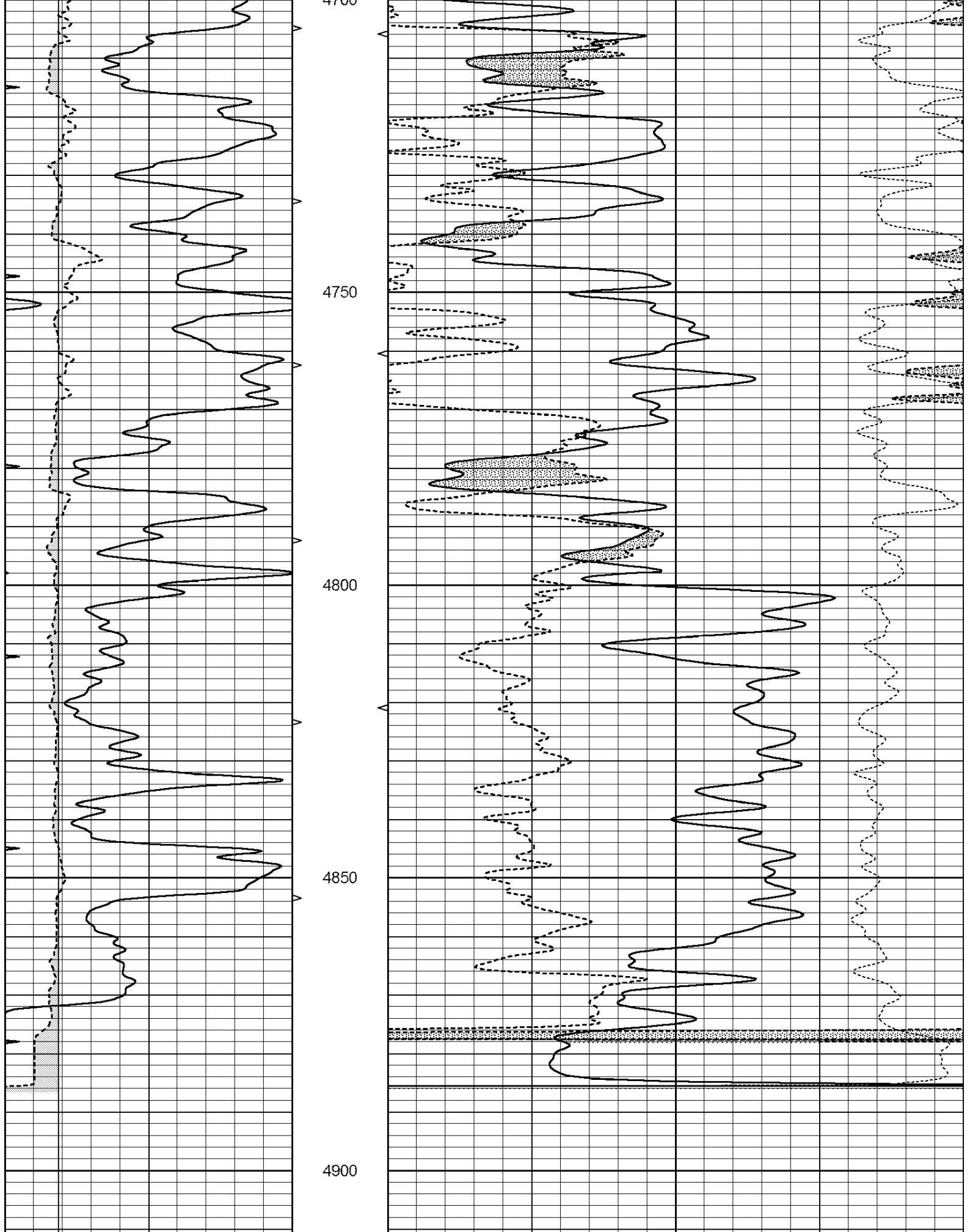
0	GAMMA RAY (GAPI)	150	ABHV	30	COMPENSATED DENSITY (pu)	-10
6	CALIPER (in)	16	10 (ft3)	0 30	COMPENSATED NEUTRON (pu)	-10
0	MINMK	20	TBHV		-0.25 CORRECTION (g/cc)	0.25
			0 (ft3)	10		



# REPEAT SECTION

Database File: 2109ddn.db  
 Dataset Pathname: pass2RP  
 Presentation Format: den\_neu  
 Dataset Creation: Fri Nov 17 05:40:38 2017  
 Charted by: Depth in Feet scaled 1:240

0	GAMMA RAY (GAPI)	150	ABHV	30	COMPENSATED DENSITY (pu)	-10
6	CALIPER (in)	16	10 (ft3)	0 30	COMPENSATED NEUTRON (pu)	-10
0	MINMK	20	TBHV		-0.25 CORRECTION (g/cc)	0.25
			0 (ft3)	10		



0	GAMMA RAY (GAPI)	150	ABHV	30	COMPENSATED DENSITY (pu)	-10
6	CALIPER (in)	16	10 (ft3)	0 30	COMPENSATED NEUTRON (pu)	-10

0	MINMK	20	TBHV	-0.25	CORRECTION (g/cc)	0.25
			0 (ft3) 10			

### Calibration Report

Database File: pe2.db  
 Dataset Pathname: pass2  
 Dataset Creation: Mon Aug 21 11:58:02 2017 by Log Open-Cased 090629

### Dual Induction Calibration Report

Serial-Model: PROBE8-DILG  
 Surface Cal Performed: Mon Aug 21 11:58:18 2017  
 Downhole Cal Performed: Mon Aug 21 11:58:21 2017  
 After Survey Verification Performed: Mon Aug 21 11:58:23 2017

#### Surface Calibration

Loop:	Readings			References			Results	
	Air	Loop		Air	Loop		m	b
Deep	0.015	0.648	V	0.000	400.000	mmho/m	620.000	0.000
Medium	0.029	0.796	V	0.000	464.000	mmho/m	590.000	-12.000
Internal:	Zero	Cal		Zero	Cal		m	b
Deep	0.017	0.657	V	0.000	400.000	mmho/m	625.153	-10.619
Medium	0.016	0.757	V	0.000	464.000	mmho/m	625.992	-9.739

#### Downhole Calibration

	Readings			References			Results	
	Zero	Cal		Zero	Cal		m'	b'
Deep	0.000	0.000	mmho/m	2.011	405.777	mmho/m	1.000	0.000
Medium	0.000	0.000	mmho/m	7.590	503.393	mmho/m	1.000	0.000
LL3		7.500	V		1500.000	Ohm-m		
		0.000	V		20.000	Ohm-m		
		-7.200	V		3800.000	mmho-m		

#### After Survey Verification

	Readings			Targets			Results	
	Zero	Cal		Zero	Cal		m'	b'
Deep	0.000	0.000	mmho/m	0.000	0.000	mmho/m	0.000	0.000
Medium	0.000	0.000	mmho/m	0.000	0.000	mmho/m	0.000	0.000
LL3		1.000	Ohm-m		1.000	Ohm-m		
		0.000	Ohm-m		0.000	Ohm-m		
		1.000	mmho-m		1.000	mmho-m		

### Litho Density Calibration Report

Serial: 002 Model: PRB

#### Master Calibration

Performed Mon Aug 21 11:56:41 2017

	Background	Magnesium	Aluminum	Sandstone	
Window 1	833.6	7394.2	2287.3	8111.8	cps
Window 2	768.9	6322.3	1995.6	6800.0	cps
Window 3	621.5	3261.9	1186.4	3380.9	cps
Window 4	184.2	185.7	184.9	184.8	cps
Long Space	0.0	5553.4	1226.6	6031.1	cps
Short Space	1.2	1307.5	903.9	1387.7	cps
Rho		1.7100	2.5900	1.3800	g/cc
Pe		0.0000	2.5700	1.5500	

Rib Angle : 46.3 Rib Slope : 1.045 Density/Spine Ratio : 0.566

Spine Angle

: 76.3

Spine Slope

: 4.090

Spine Intercept

: -20.7

Before Survey Verification

Performed Wed Dec 31 18:00:00 1969

Window 1	0.0	0.0	0.0	0.0	cps
Window 2	0.0	0.0	0.0	0.0	cps
Window 3	0.0	0.0	0.0	0.0	cps
Window 4	0.0	0.0	0.0	0.0	cps
Long Space	0.0	0.0	0.0	0.0	cps
Short Space	0.0	0.0	0.0	0.0	cps
Measured Rho		0.0000	0.0000	0.0000	g/cc
Measured Correction		0.0000	0.0000	0.0000	g/cc
Measured Pe			0.0000	0.0000	

After Survey Verification

Performed Wed Dec 31 18:00:00 1969

Window 1	0.0	0.0	0.0	0.0	cps
Window 2	0.0	0.0	0.0	0.0	cps
Window 3	0.0	0.0	0.0	0.0	cps
Window 4	0.0	0.0	0.0	0.0	cps
Long Space	0.0	0.0	0.0	0.0	cps
Short Space	0.0	0.0	0.0	0.0	cps
Measured Rho		0.0000	0.0000	0.0000	g/cc
Measured Correction		0.0000	0.0000	0.0000	g/cc
Measured Pe			0.0000	0.0000	

## Compensated Neutron Calibration Report

Serial Number: 6I  
Tool Model: G

## CALIBRATION

Detector	Readings	Target	Normalization
Short Space	1.00 cps	1.00 cps	1.0000
Long Space	1.00 cps	1.00 cps	1.0000

## PRE-SURVEY VERIFICATION

	Detector	Readings	Measured	Target
1)	Short Space	cps		
	Long Space	cps	pu	pu
2)	Short Space	cps		
	Long Space	cps	pu	
3)	Short Space	cps		
	Long Space	cps	pu	

## POST-SURVEY VERIFICATION

	Detector	Readings	Measured	Target
1)	Short Space	cps		
	Long Space	cps	pu	pu
2)	Short Space	cps		
	Long Space	cps	pu	pu
3)	Short Space	cps		

5)

Short Space  
Long Space

cps  
cps

pu  
pu

pu

Gamma Ray Calibration Report

Serial Number:	GR6	
Tool Model:	OPEN	
Performed:	Mon Aug 21 11:59:01 2017	
Calibrator Value:	150.0	GAPI
Background Reading:	0.0	cps
Calibrator Reading:	276.0	cps
Sensitivity:	0.5500	GAPI/cps