



# DUAL COMP POROSITY LOG

Company: SPESS OIL COMPANY  
 Well: LL JONES SWD NO.1  
 Field: PLYMELL  
 County: FINNEY  
 State: KANSAS

Company: SPESS OIL COMPANY  
 Well: LL JONES SWD NO.1  
 Field: PLYMELL  
 County: FINNEY  
 State: KANSAS

Location: API #: 15-055-22467-00-00  
 366' FSL & 918' FEL  
 SEC 30 TWP 25S RGE 33W  
 Permanent Datum: GROUND LEVEL Elevation 2945'  
 Log Measured From: KELLY BUSHING  
 Drilling Measured From: KELLY BUSHING  
 Other Services: DIL  
 Elevation: K.B. 2956', D.F. N/A, G.L. 2945'

Date	10/31/2017						
Run Number	ONE						
Type Log	CNL/CDL						
Depth Driller	2040'						
Depth Logger	2040'						
Bottom Logged Interval	2019'						
Top Logged Interval	900'						
Type Fluid In Hole	CHEMICAL						
Salinity, PPM CL	550						
Density	8.6						
Level	FULL						
Max. Rec. Temp. F	96 DEG/F						
Operating Rig Time	2 HOURS						
Equipment -- Location	108 HAYS						
Recorded By	J. HENRICKSON						
Witnessed By	KEN MCGUIRE						
Borehole Record		Casing Record					
Run No.	Bit	From	To	Size	Wgt.	From	To
ONE	12.25"	0	942'	8.625"	23#	0	942'
TWO	7.875"	942'					

<<< Fold Here >>>

All interpretations are opinions based on inferences from electrical or other measurements and Pioneer Wireline Services, LLC cannot and does not guarantee the accuracy or correctness of any interpretation, and Pioneer Wireline Services, LLC will not be liable or responsible for any loss, costs, damages, or expenses incurred or sustained by anyone resulting from any interpretation made by any of our officers, agents or employees.

Comments

N/A DENOTES NOT AVAILABLE OR NON-APPLICABLE.  
 GARDEN CITY  
 SOUTH TO PARALLEL ROAD, 5 1/2 WEST, NORTH INTO

Log Measured From: KELLY BUSHING 11 Ft. Above Permanent Datum

THANK YOU FOR USING PIONEER ENERGY SERVICES  
[www.pioneerenergy.com](http://www.pioneerenergy.com) 785-625-3858

Your Pioneer Energy Services Crew		This Log Record Was Witnessed By	
Engineer: J. HENRICKSON	Operator:	Primary Witness: KEN MCGUIRE	Secondary Witness:
Operator:	Operator:	Secondary Witness:	Secondary Witness:
Operator:		Secondary Witness:	

Sensor	Offset (ft)	Schematic	Description	Length (ft)	O.D. (in)	Weight (lb)
GR	33.00		GR-M&W (89-M&W)	3.00	3.50	50.00
CNLSC CNSSC	29.90 29.15		CNT-M&W (tk10-MW)	5.50	3.50	100.00
LSD DCAL SSD	20.85 20.83 20.35		CDL-M&W (168-986)	8.50	4.00	250.00
RLL3F RLL3	15.80 15.80		DIL-PSI HIGH TEMP (PSI 216 HT)	18.50	3.50	220.00
CILD	8.00					
CILM	4.70					
SP	0.20					

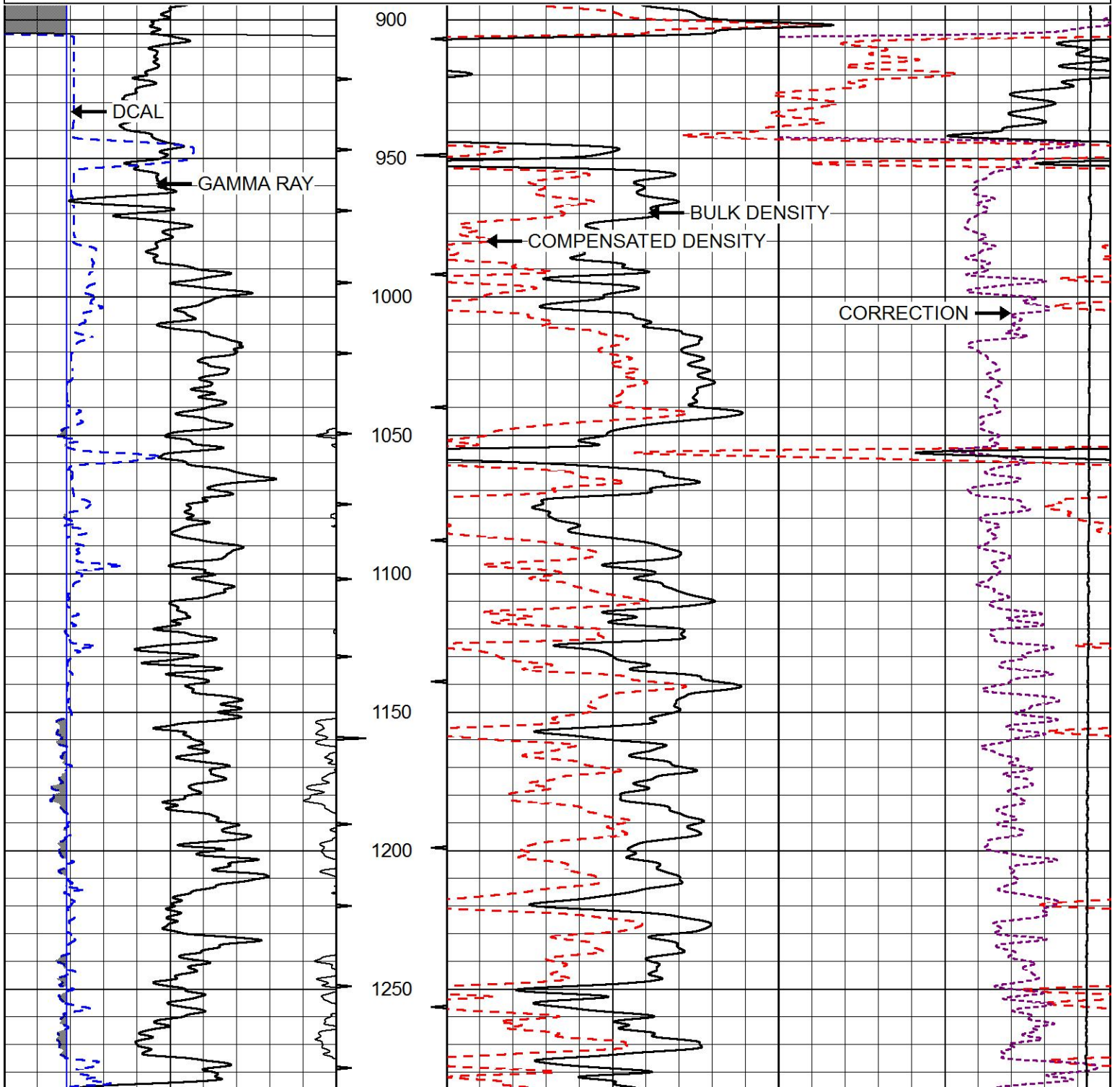
Dataset: spess\_ll\_jones\_swd\_1.db: field/well/stack/pass3.1  
 Total length: 35.50 ft  
 Total weight: 620.00 lb  
 O.D.: 4.00 in

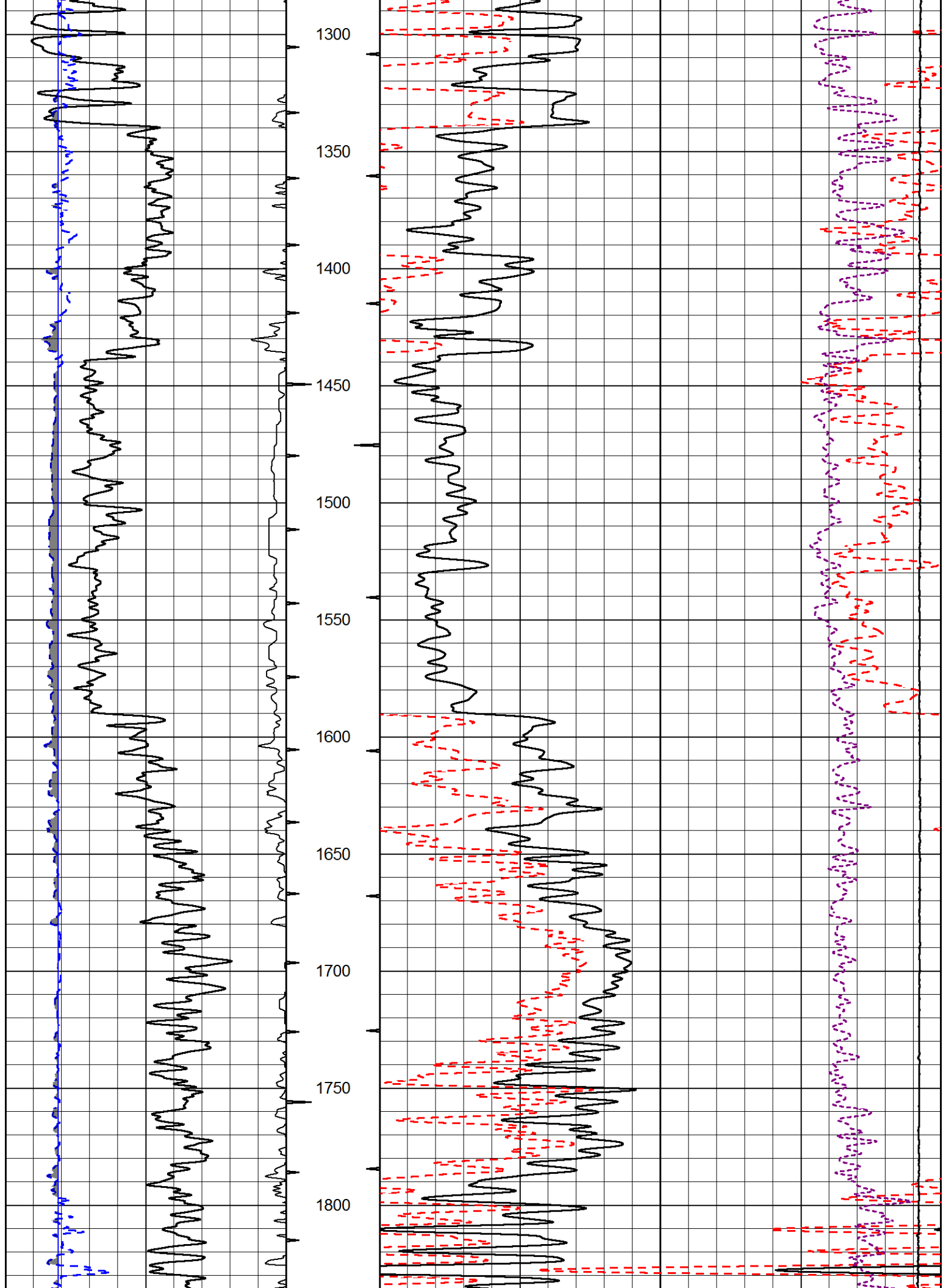
# MAIN PASS

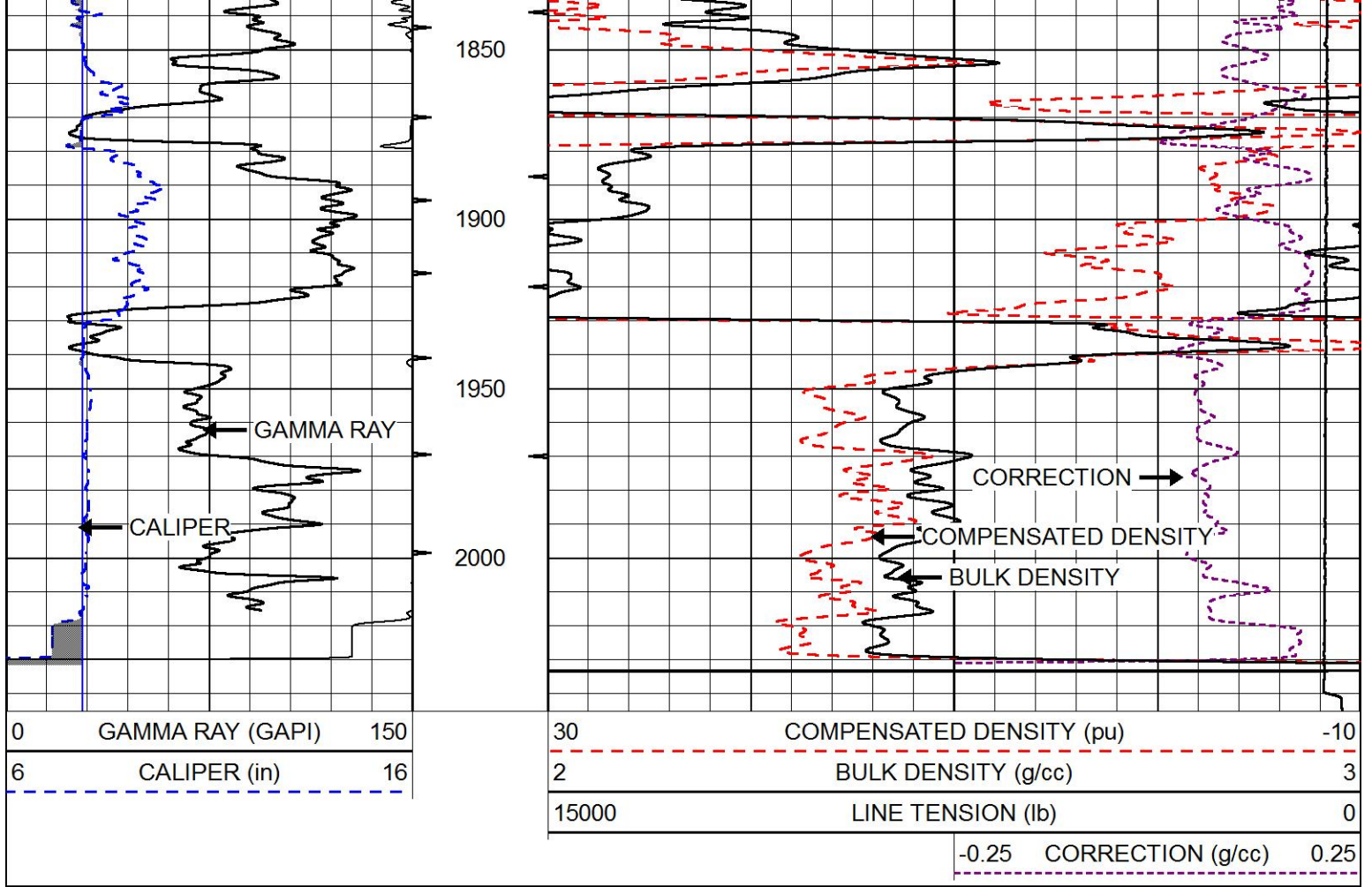
Database File spess\_ll\_jones\_swd\_1.db  
 Dataset Pathname stack/pass3.1  
 Presentation Format cdl  
 Dataset Creation Tue Oct 31 11:12:43 2017  
 Charted by Depth in Feet scaled 1:600

0	GAMMA RAY (GAPI)	150
6	CALIPER (in)	16

30	COMPENSATED DENSITY (pu)	-10
2	BULK DENSITY (g/cc)	3
15000	LINE TENSION (lb)	0
-0.25	CORRECTION (g/cc)	0.25

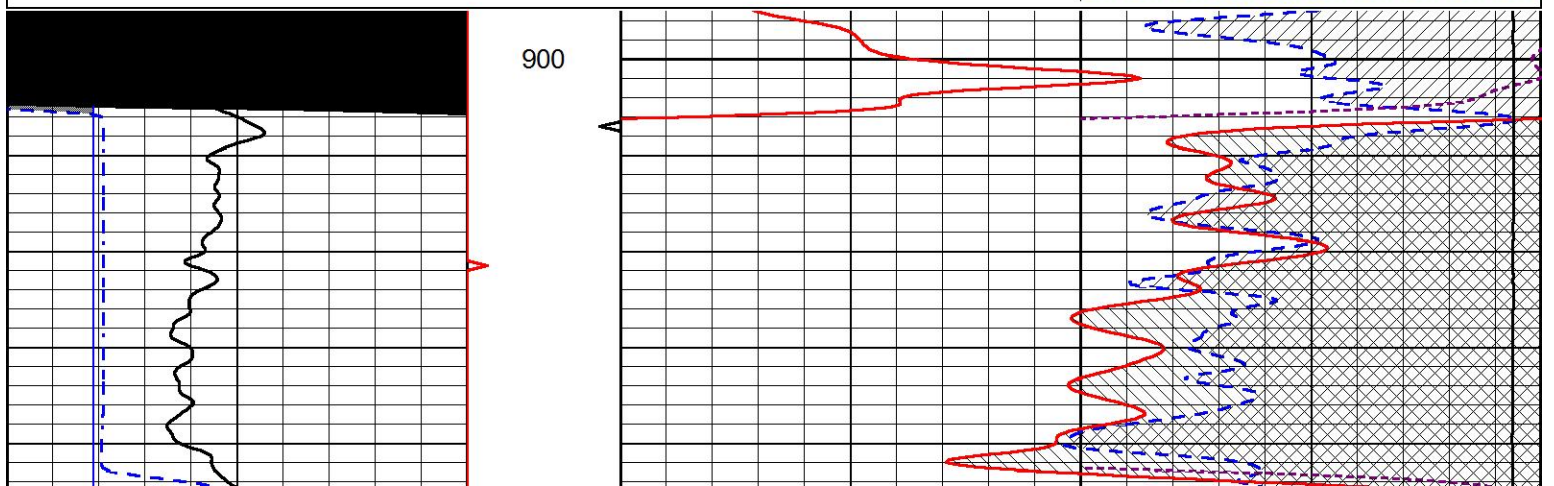
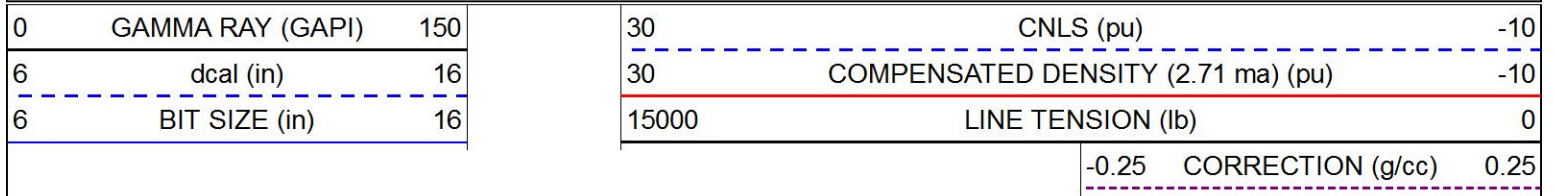


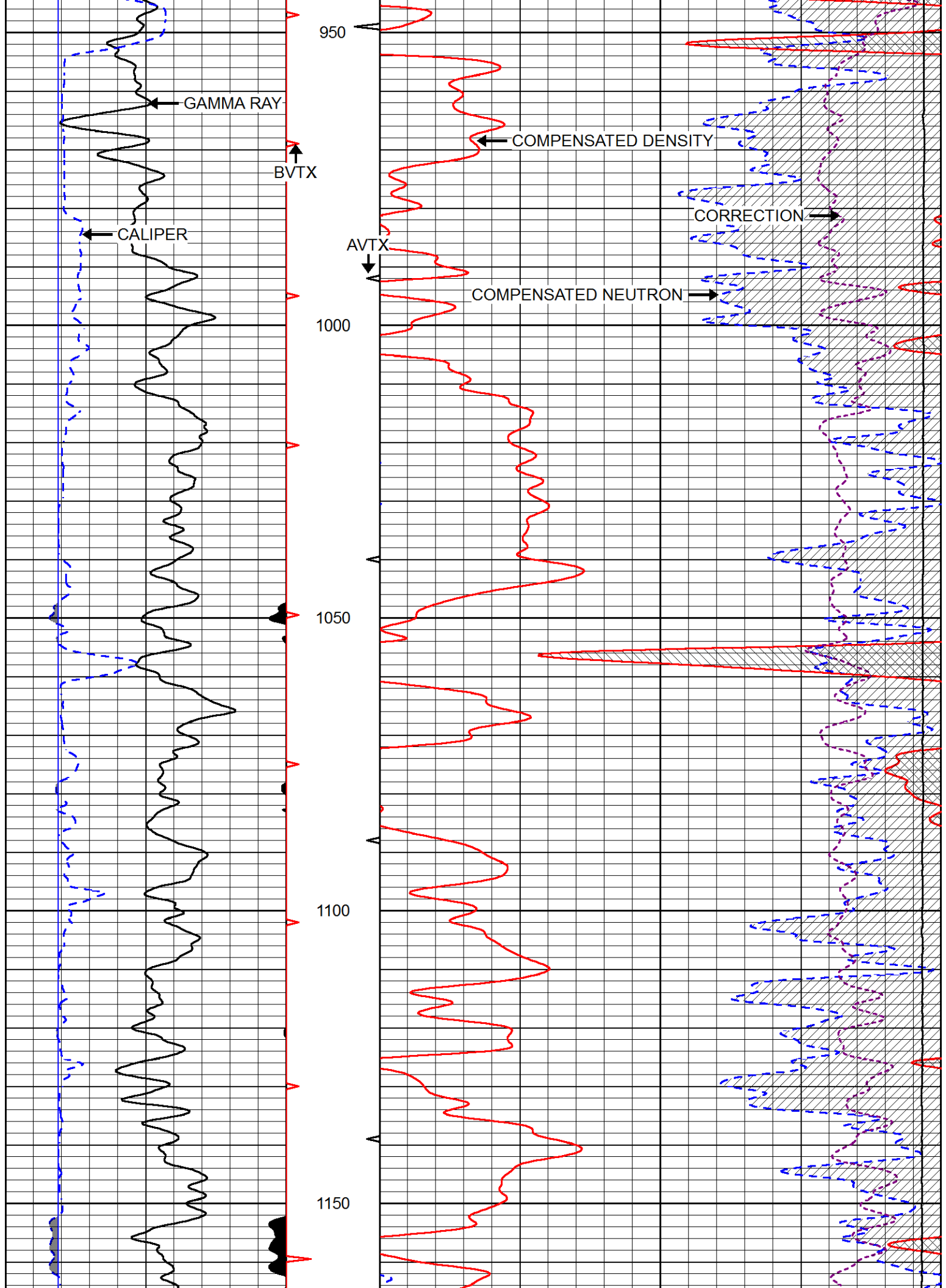


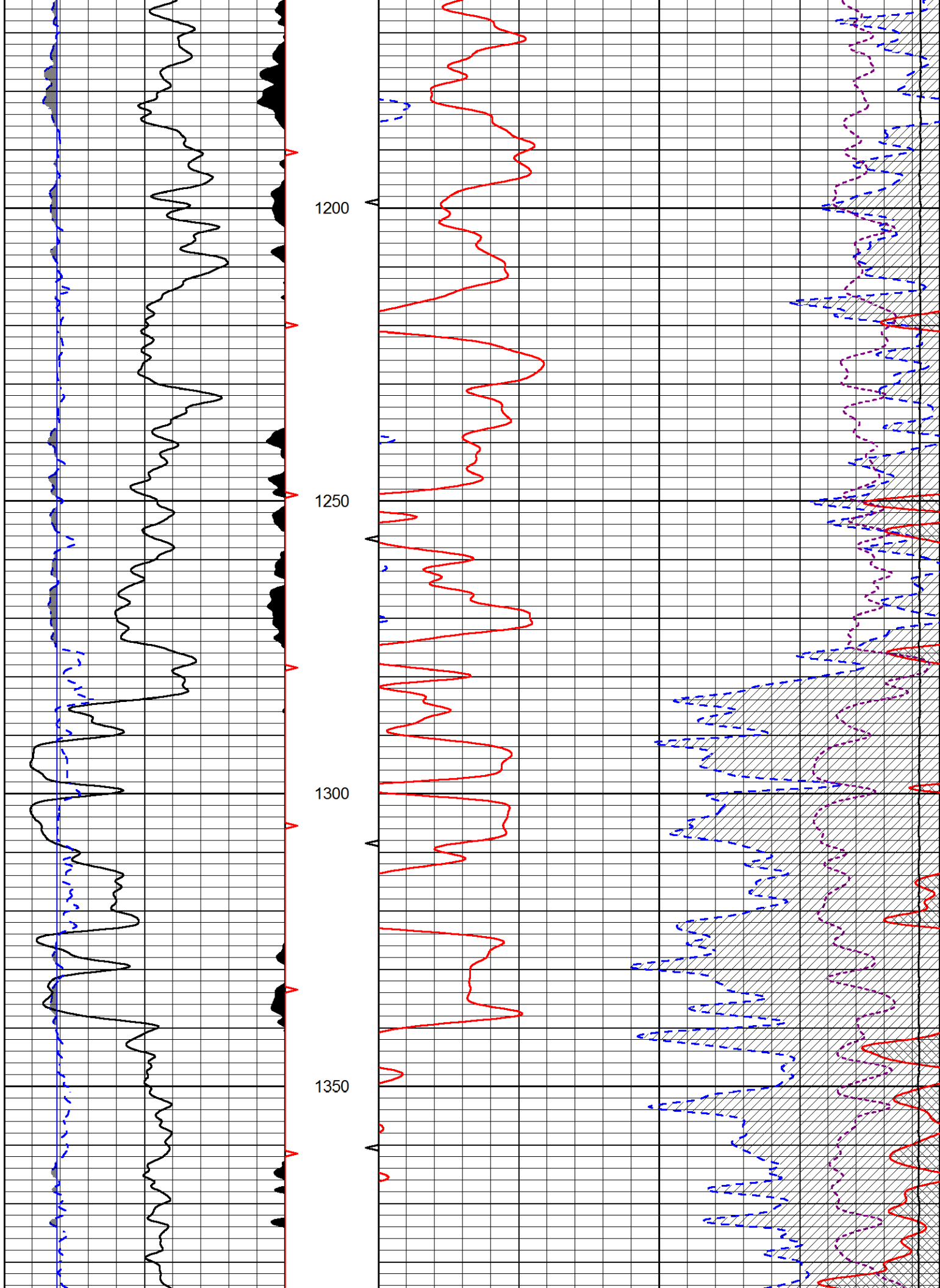


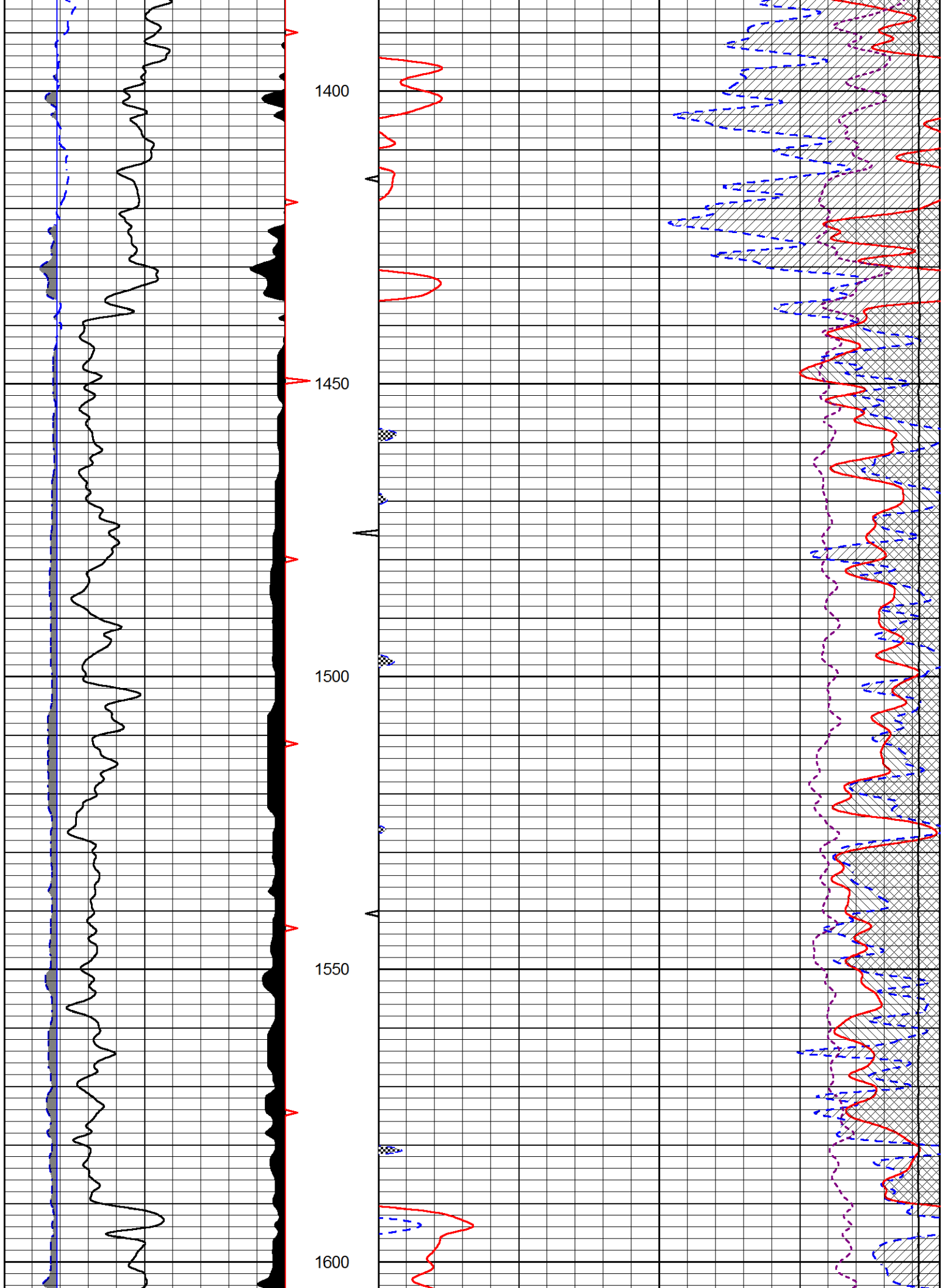

# MAIN PASS

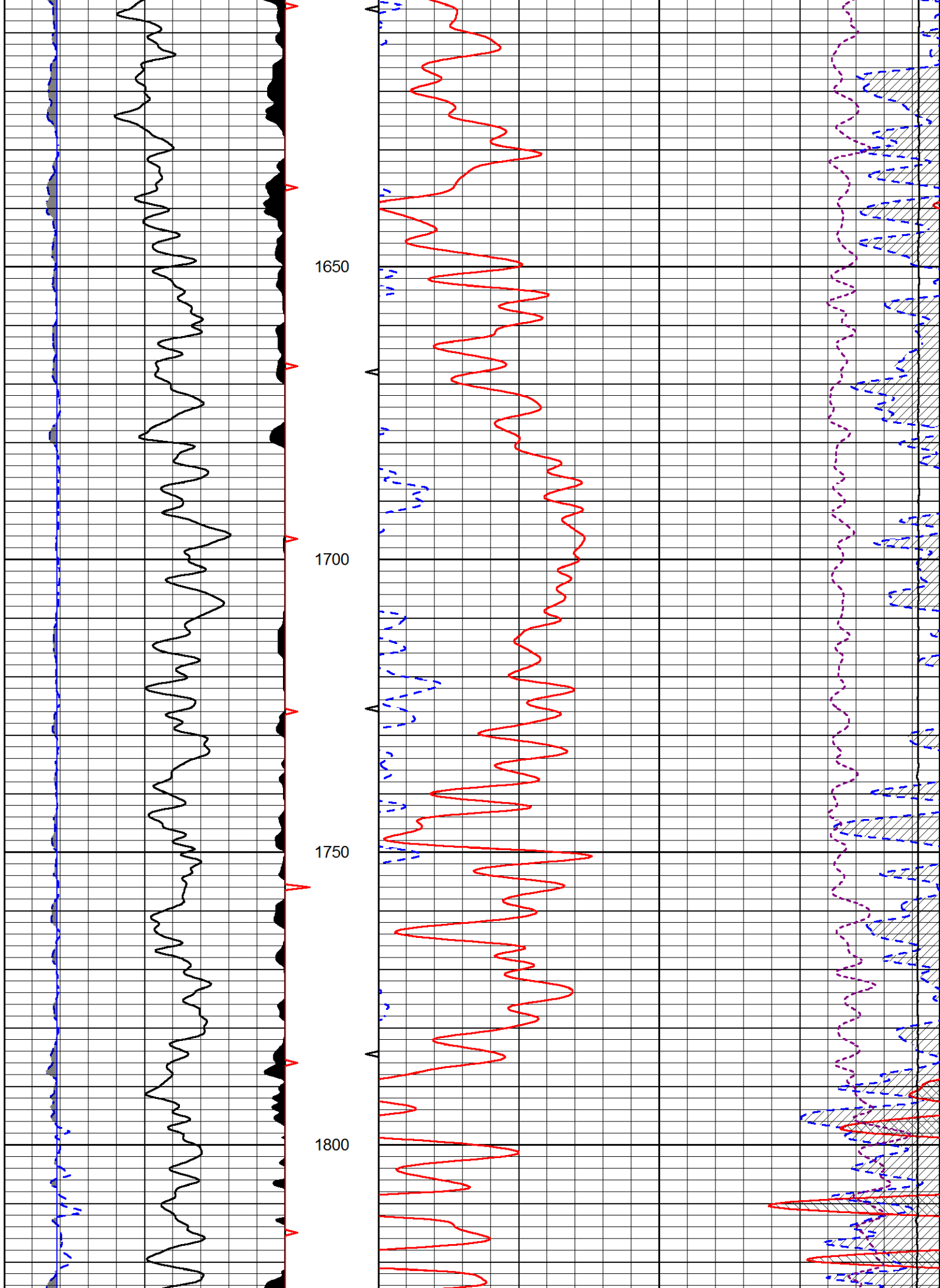
Database File      spess\_ll\_jones\_swd\_1.db  
 Dataset Pathname    stack/pass3.1  
 Presentation Format    cndlspec  
 Dataset Creation      Tue Oct 31 11:12:43 2017  
 Charted by            Depth in Feet scaled 1:240

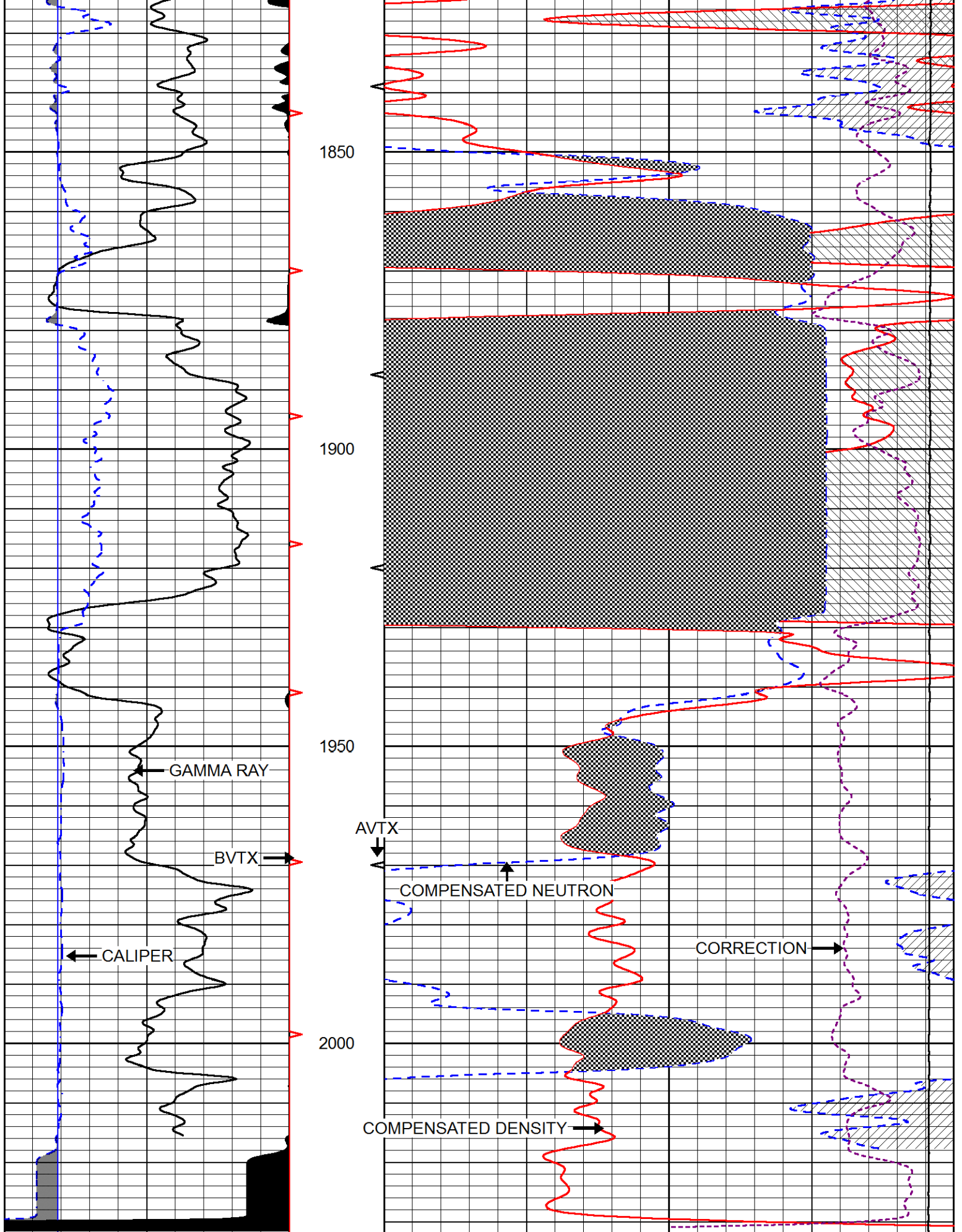












0	GAMMA RAY (GAPI)	150
6	dcal (in)	16
6	BIT SIZE (in)	16

30	CNLS (pu)	-10
30	COMPENSATED DENSITY (2.71 ma) (pu)	-10
15000	LINE TENSION (lb)	0
	-0.25 CORRECTION (g/cc)	0.25

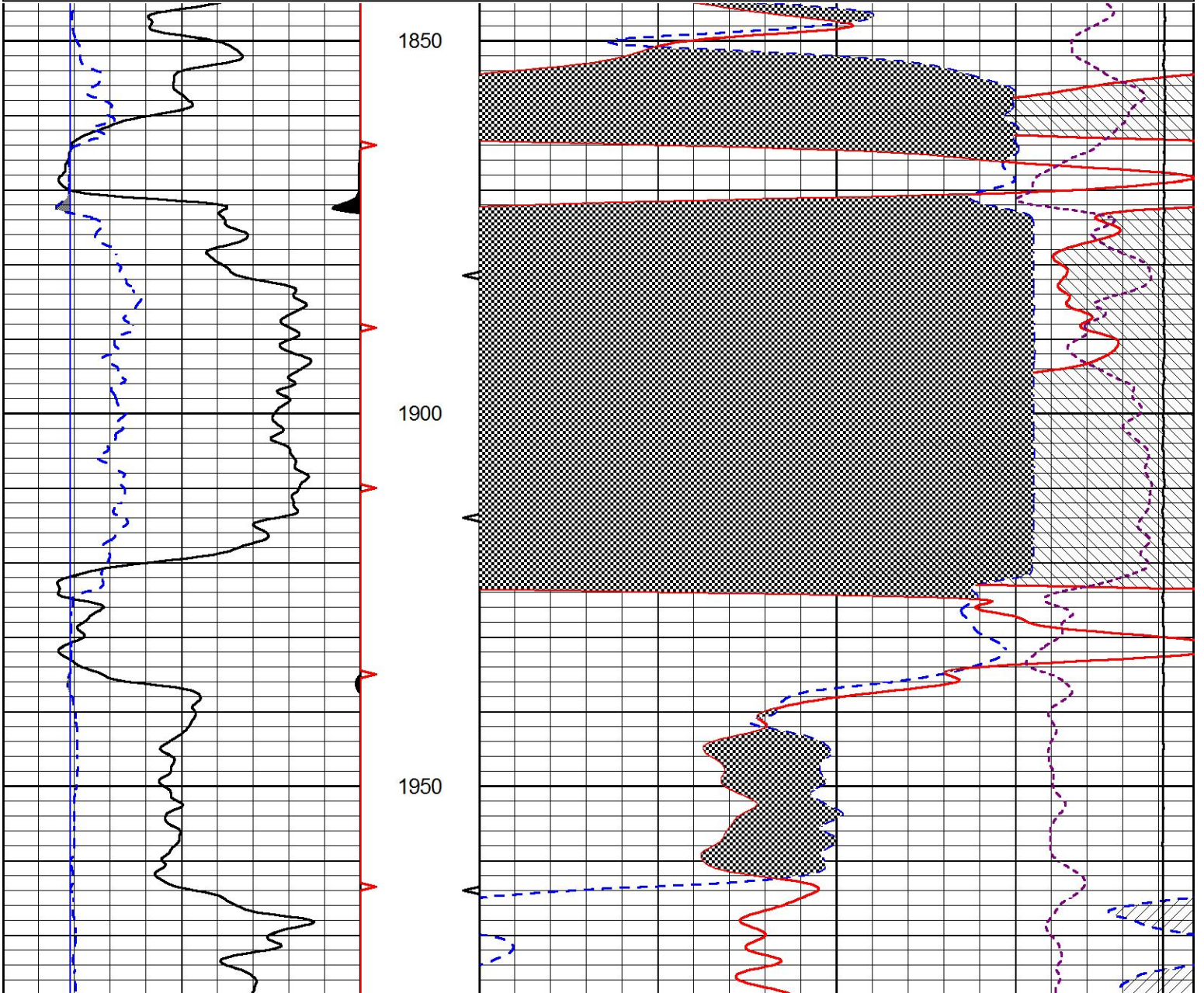


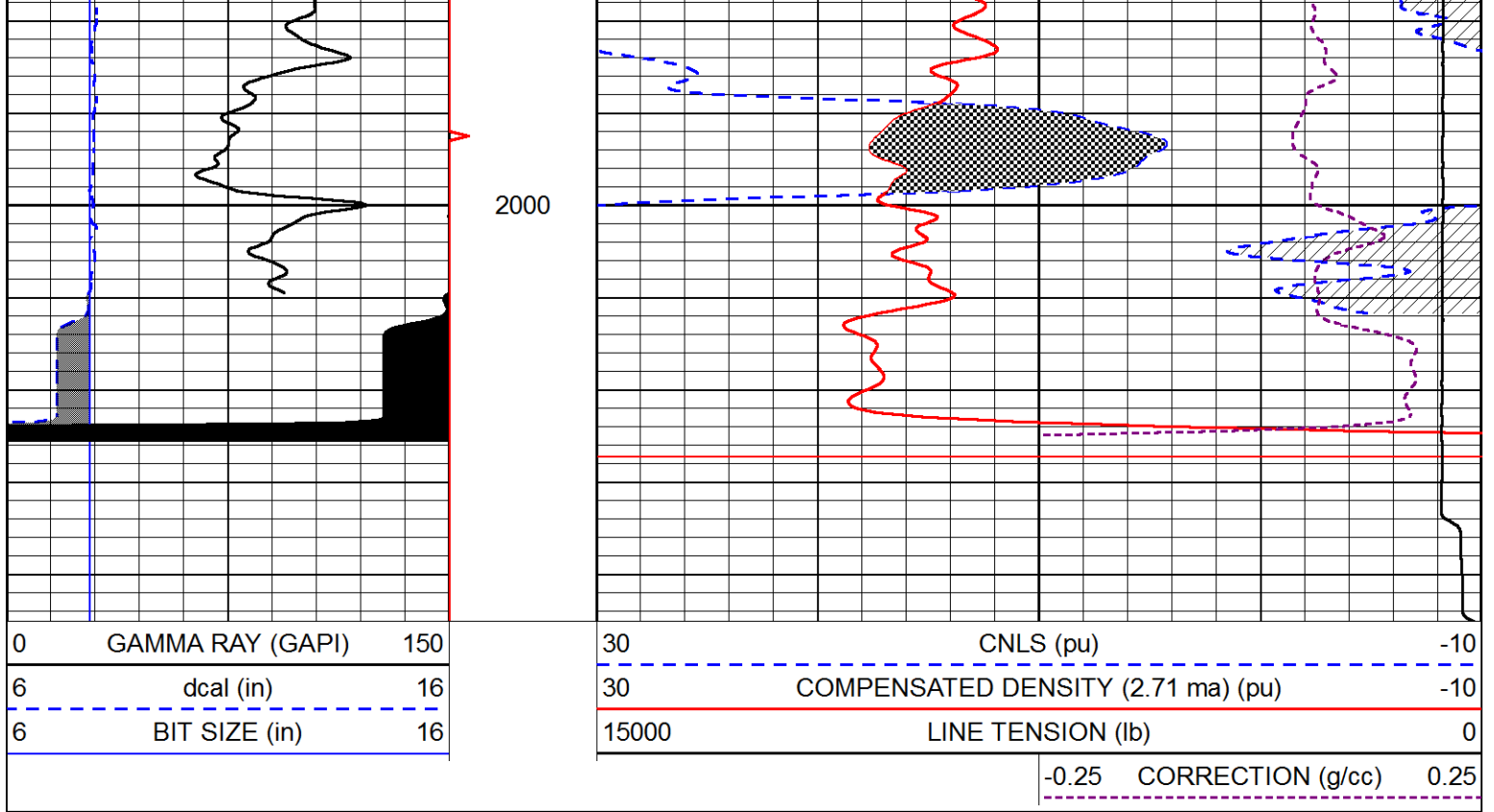
# REPEAT SECTION

Database File spess\_ll\_jones\_swd\_1.db  
 Dataset Pathname stack/pass2.1  
 Presentation Format cndlspec  
 Dataset Creation Tue Oct 31 11:13:20 2017  
 Charted by Depth in Feet scaled 1:240

0	GAMMA RAY (GAPI)	150
6	dcal (in)	16
6	BIT SIZE (in)	16

30	CNLS (pu)	-10
30	COMPENSATED DENSITY (2.71 ma) (pu)	-10
15000	LINE TENSION (lb)	0
	-0.25 CORRECTION (g/cc)	0.25





### Calibration Report

Database File spess\_II\_jones\_swd\_1.db  
 Dataset Pathname stack/pass3.1  
 Dataset Creation Tue Oct 31 11:12:43 2017

### Dual Induction Calibration Report

Serial-Model: PSI 216 HT-PSI HIGH TEMP  
 Calibration Performed: Thu Aug 24 03:44:32 2017

Loop:	Readings		References			Results	
	Air	Loop	Air	Loop		Gain	Offset
Deep	75.411	495.929	4.000	250.000	mmho/m	0.750	-40.115
Medium	75.269	470.661	10.000	100.000	mmho/m	0.628	-22.133

### Compensated Density Calibration Report

Serial-Model: 168-986-M&W  
 Source / Verifier: /  
 Master Calibration Performed: Tue Apr 11 16:07:47 2017

### Master Calibration

	Density		Far Detector	Near Detector	
Magnesium	1.755	g/cc	4691.86	4818.19	cps
Aluminum	2.675	g/cc	859.57	3020.22	cps

Spine Angle = 74.61

Density/Spine Ratio = 0.523

	Size		Reading
Small Ring	4.00	in	1.03

## Compensated Neutron Calibration Report

Serial Number: tk10-MW  
 Tool Model: M&W  
 Calibration Performed: Wed Nov 16 11:21:36 2016

Detector	Readings	Target	Normalization
Short Space	6240.00 cps	1000.00 cps	1.6025
Long Space	460.00 cps	1000.00 cps	1.9500

## Gamma Ray Calibration Report

Serial Number: 89-M&W  
 Tool Model: M&W  
 Calibration Performed: Tue Apr 11 16:08:01 2017

Calibrator Value: 1000.0 GAPI

Background Reading: 0.0 cps  
 Calibrator Reading: 6.2 cps

Sensitivity: 0.5200 GAPI/cps



Company SPESS OIL COMPANY  
 Well LL JONES SWD NO.1  
 Field PLYMELL  
 County FINNEY  
 State KANSAS