



**CEMENT
BOND LOG**

Company CMX INC.
Well SUSANK 2 NO. 2-19
Field TRAPP
County BARTON
State KANSAS

Company CMX INC.
Well SUSANK 2 NO. 2-19
Field TRAPP
County BARTON
State KANSAS

Location: 940' FNL & 1210' FWL
API #: 15-009-26117-00-00
SEC 29 TWP 16 S RGE 13 W
Permanent Datum GROUND LEVEL Elevation 1944
Log Measured From KELLY BUSHING
Drilling Measured From KELLY BUSHING
Other Services MAST TRAILER
Elevation K.B. 1952
D.F. 1950
G.L. 1944

Date	1-0/01/2015
Run Number	ONE
Depth Driller	3395
Depth Logger	3376
Bottom Logged Interval	3376
Top Log Interval	2250
Open Hole Size	8 5/8
Type Fluid	WATER
Density / Viscosity	N/A
Max. Recorded Temp.	112
Estimated Cement Top	2470
Time Well Ready	9:00 AM
Time Logger on Bottom	10:00 AM
Equipment Number	T-173
Location	HAYS
Recorded By	A DREILING
Witnessed By	MR KEITH BRIGHT

Run Number	Borehole Record		Tubing Record				
	Bit	From	To	Size	Weight	From	To
ONE	12.25	0"					
TWO	7.785		T.D.				

Casing Record	Size	Wgt/Ft	Top	Bottom
Surface String	8 5/8	23 #	0'	
Prot. String	5.5"	15.5 #	0'	T.D.
Production String				
Liner				

<<< Fold Here >>>

All interpretations are opinions based on inferences from electrical or other measurements and we cannot and do not guarantee the accuracy or correctness of any interpretation, and we shall not, except in the case of gross or willful negligence on our part, be liable or responsible for any loss, costs, damages, or expenses incurred or sustained by anyone resulting from any interpretation made by any of our officers, agents or employees. These interpretations are also subject to our general terms and conditions set out in our current Price Schedule.

Comments

SUSANK KS.
3/4 W, S INTO

LOG CORRELATED TO RECON DUAL INDUCTION

Calibration Report

Database File cmx_susank.db
Dataset Pathname grcbl/pass5
Dataset Creation Thu Oct 01 10:52:25 2015

Gamma Ray Calibration Report

Serial Number: 080616
 Tool Model: 275D_INC
 Performed: Thu Oct 01 08:41:07 2015

Calibrator Value: 200.0 GAPI

Background Reading: 50.0 cps
 Calibrator Reading: 250.0 cps

Sensitivity: 1.3000 GAPI/cps

Inclinometer Calibration Report

Performed: Tue Apr 07 10:16:42 2009

	Low Read.	High Read.	Low Ref.	High Ref.		Gain	Offset
X Accelerometer	-3585.20	3595.40	-1.00	1.00	gee	0.00	-0.00
Y Accelerometer	-3619.40	3520.00	-1.00	1.00	gee	0.00	0.01
Z Accelerometer	-104.20	3565.60	0.00	1.00	gee	0.00	0.03
RB						1.00	0.00

Segmented Cement Bond Log Calibration Report

Serial Number: 080321
 Tool Model: ProbeRadial

Calibration Casing Diameter: 5.500 in
 Calibration Depth: 1015.058 ft

Master Calibration, performed Thu Oct 01 08:48:04 2015:

	Raw (v)		Calibrated (mv)		Results	
	Zero	Cal	Zero	Cal	Gain	Offset
3'	-0.011	1.007	1.700	71.921	68.933	2.490
CAL	1.242	1.213				
5'	-0.010	1.088	1.700	71.921	63.920	2.371
SUM						
S1	-0.011	1.070	0.000	72.000	66.579	0.745
S2	-0.012	1.063	0.000	72.000	67.001	0.774
S3	-0.011	1.016	0.000	72.000	70.098	0.796
S4	-0.012	0.988	0.000	72.000	72.044	0.845
S5	-0.012	0.972	0.000	72.000	73.198	0.880
S6	-0.012	0.985	0.000	72.000	72.260	0.834
S7	-0.011	1.008	0.000	72.000	70.643	0.771
S8	-0.011	1.036	0.000	72.000	68.750	0.760

Internal Reference Calibration, performed Wed Dec 31 17:00:00 1969:

	Raw (v)		Calibrated (v)		Results	
	Zero	Cal	Zero	Cal	Gain	Offset

CAL 0.000 0.000 1.242 1.213 1.000 0.000

Air Zero Calibration, performed Thu Oct 01 08:47:27 2015:

	Raw (v)	Calibrated (v)	Results
	Zero	Zero	Offset
3'	0.000	0.000	0.000
5'	0.000	0.000	0.000
SUM			
S1	0.000	0.000	0.000
S2	0.000	0.000	0.000
S3	0.000	0.000	0.000
S4	0.000	0.000	0.000
S5	0.000	0.000	0.000
S6	0.000	0.000	0.000
S7	0.000	0.000	0.000
S8	0.000	0.000	0.000

Sensor	Offset (ft)	Schematic	Description	Length (ft)	O.D. (in)	Weight (lb)	
WVFS8	11.75		X	3.00	1.69	25.00	
WVFS7	11.75						
WVFS6	11.75						
WVFS5	11.75						
WVFS4	11.75						
WVFS3	11.75						
WVFS2	11.75			SCBL-ProbeRadial (080321) Probe 2 3/4 Radll	8.75	2.75	106.50
WVFS1	11.75						
WVF3FT	11.75						
WVF5FT	10.75						
WVFCAL	7.50			X	3.00	1.69	25.00
CCL	3.50						
ACCZ	1.83						
ACCY	1.83						
ACCX	1.83						
GR	0.83		275D_INC (080616) 2-3/4" GR-CCL with Inclination	4.50	2.75	50.00	

Dataset: cmx_susank.db: field/well/grcbl/pass5
 Total length: 19.25 ft
 Total weight: 206.50 lb
 O.D.: 2.75 in

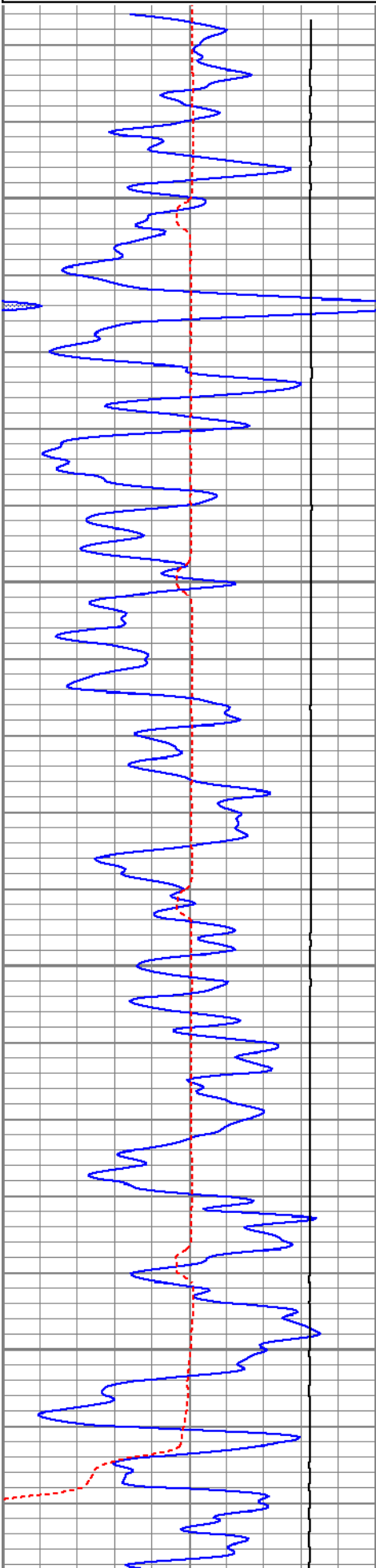


MAIN PASS

Database File cmx_susank.db
 Dataset Pathname grcbl/pass5.1
 Presentation Format cbl
 Dataset Creation Thu Oct 01 11:25:54 2015
 Charted by Depth in Feet scaled 1:240

0	GR (GAPI)	150	18	CCL	-2	200	VDL	1200
150	GR (GAPI)	300	0	AMP3 (mV)	100			

420	TT3FT (usec)	220
4000	LTEN (lb)	0

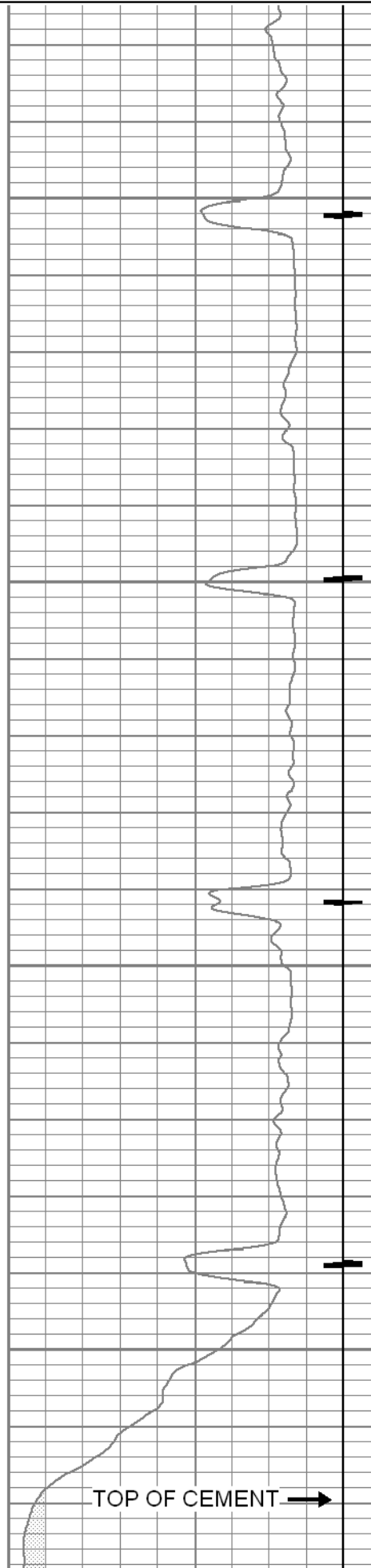


2300

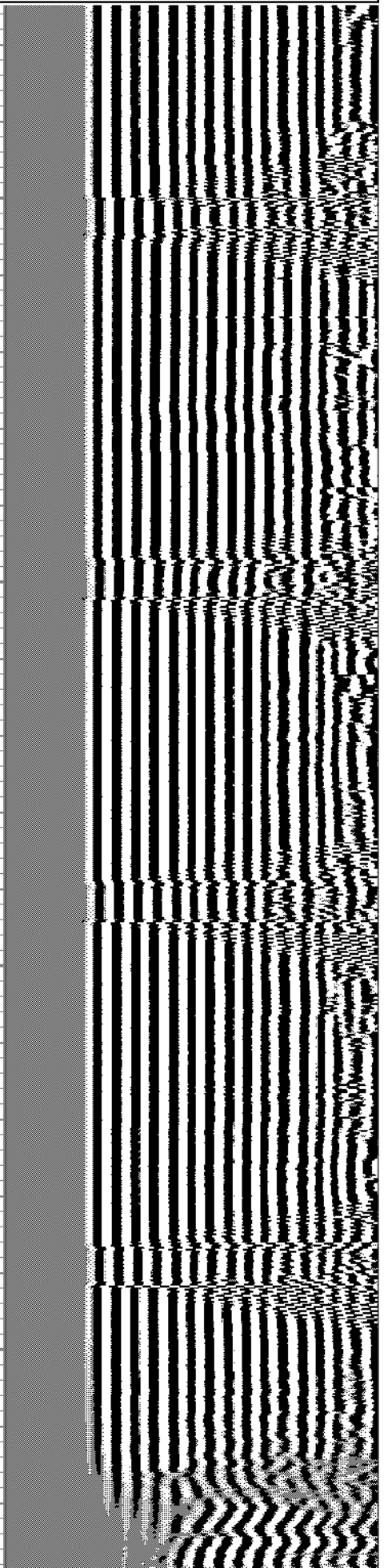
2350

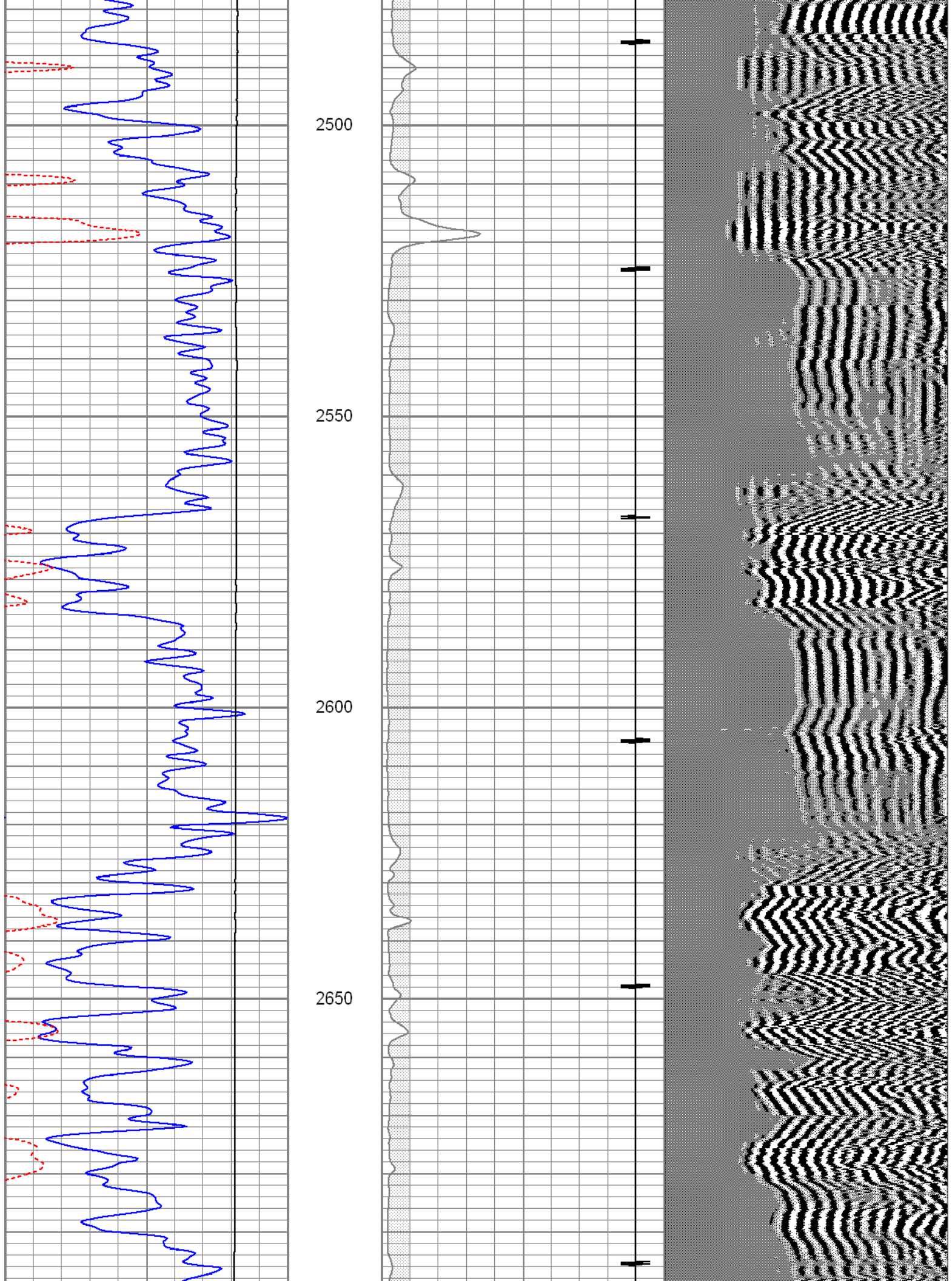
2400

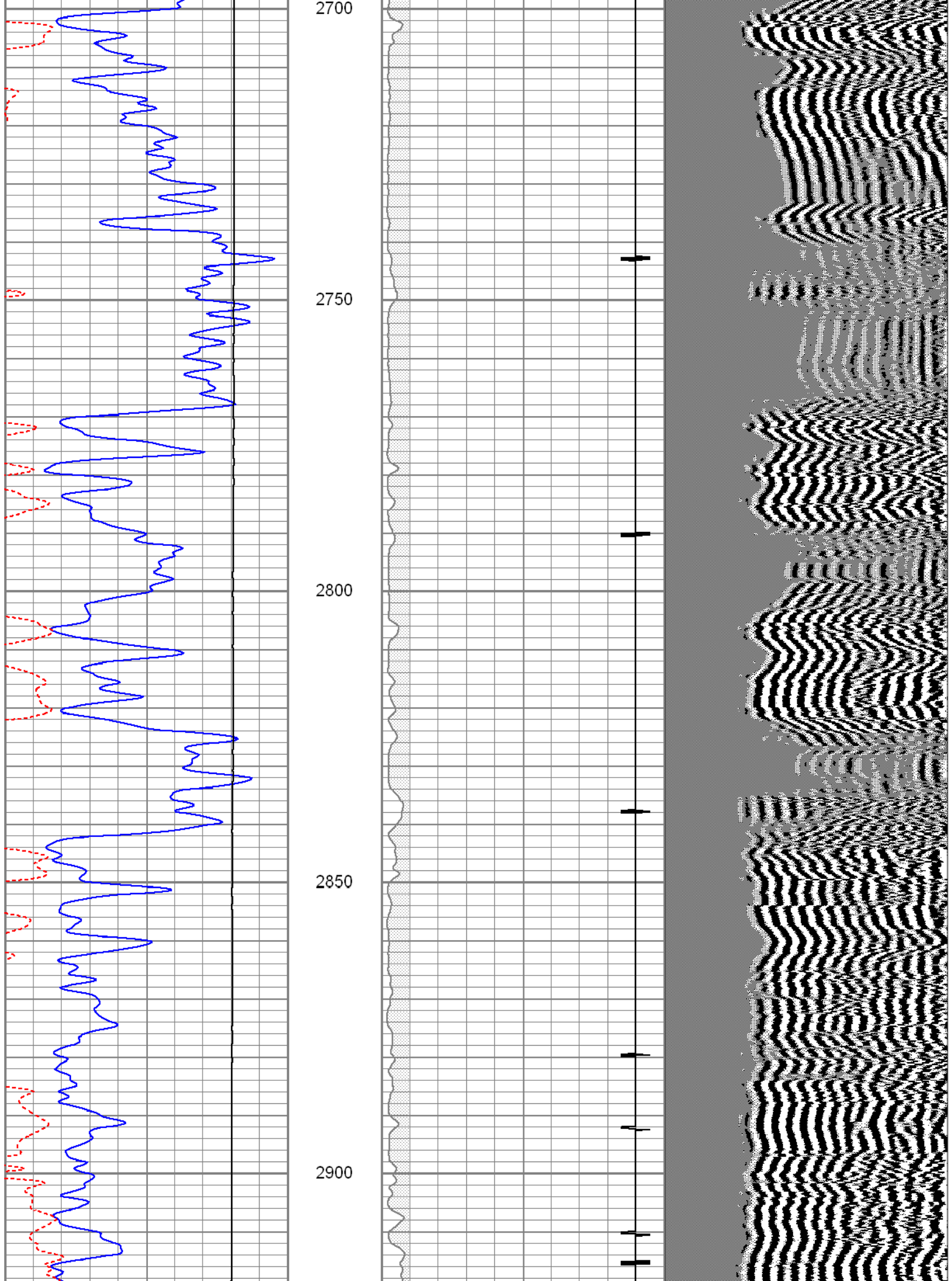
2450

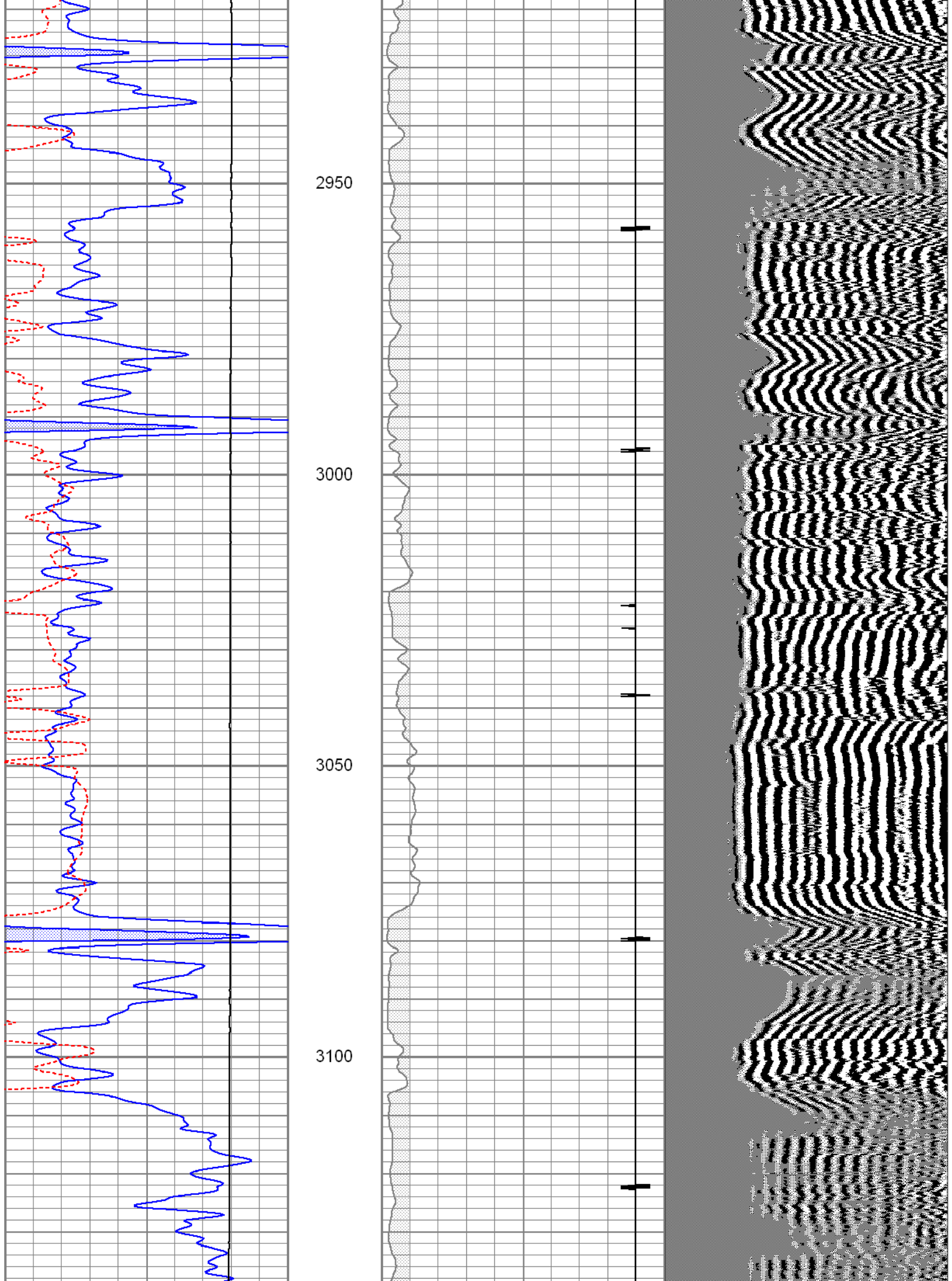


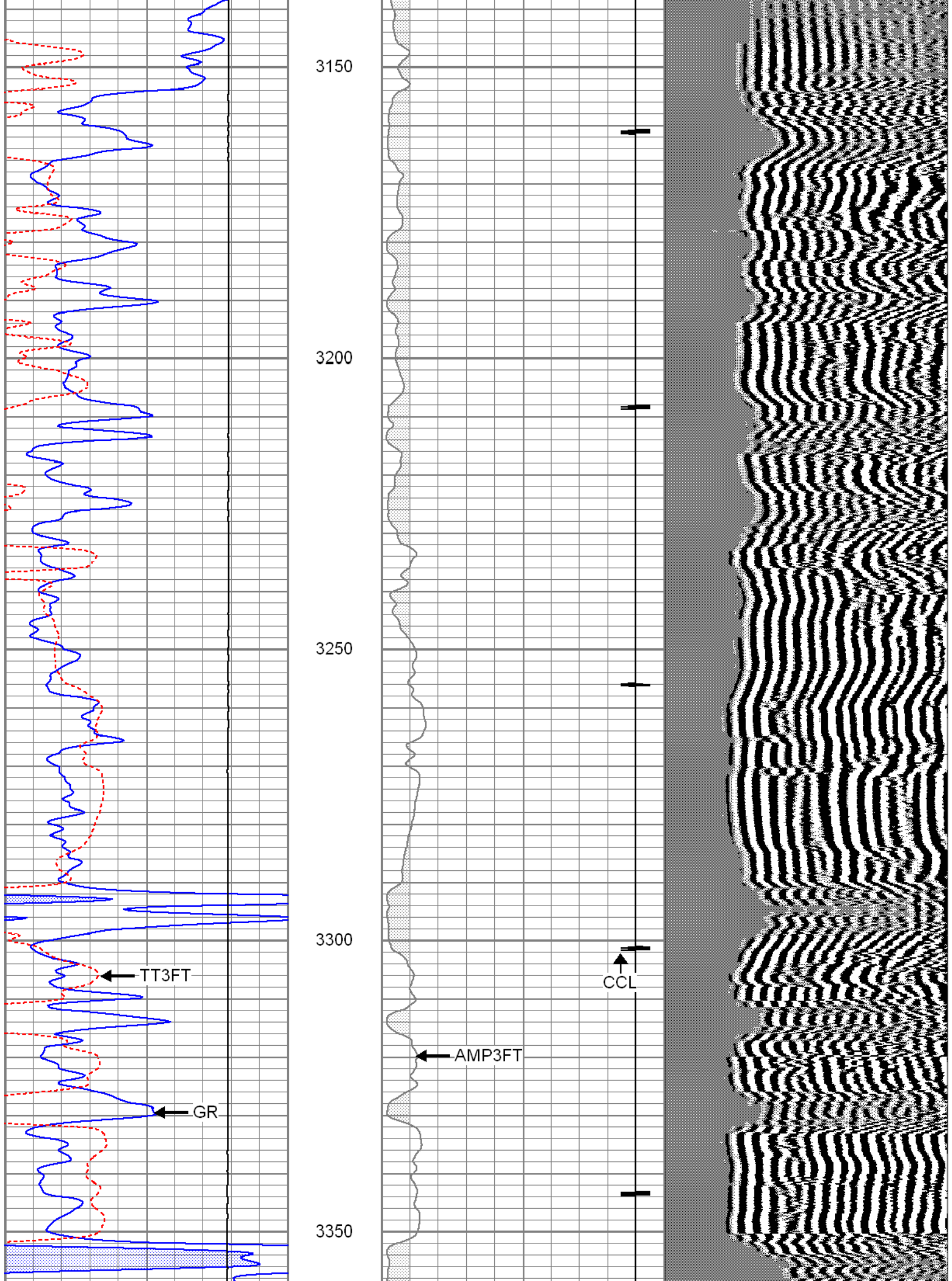
TOP OF CEMENT →

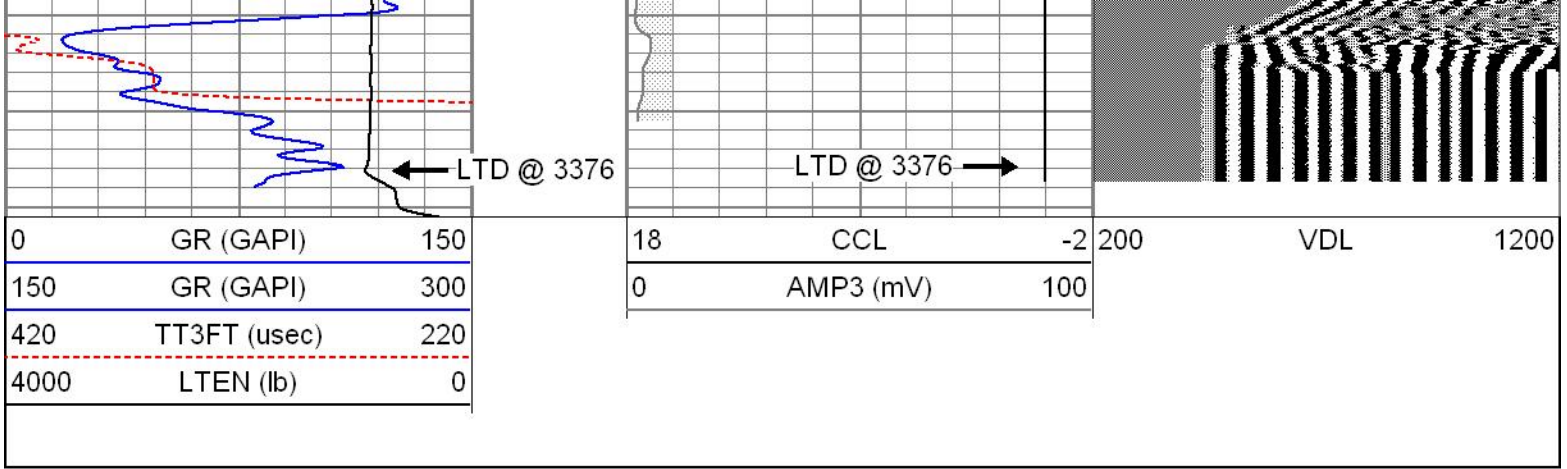






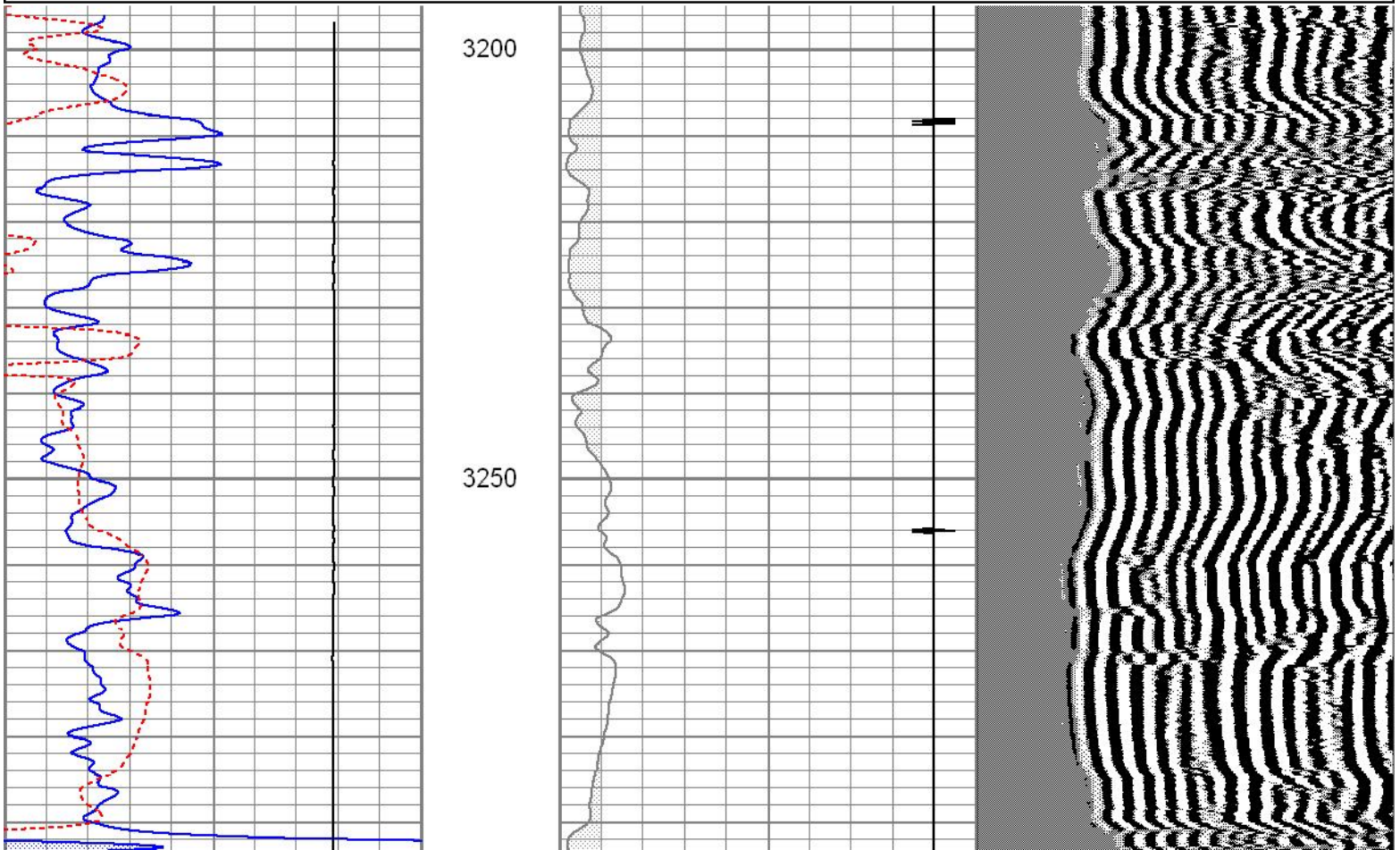
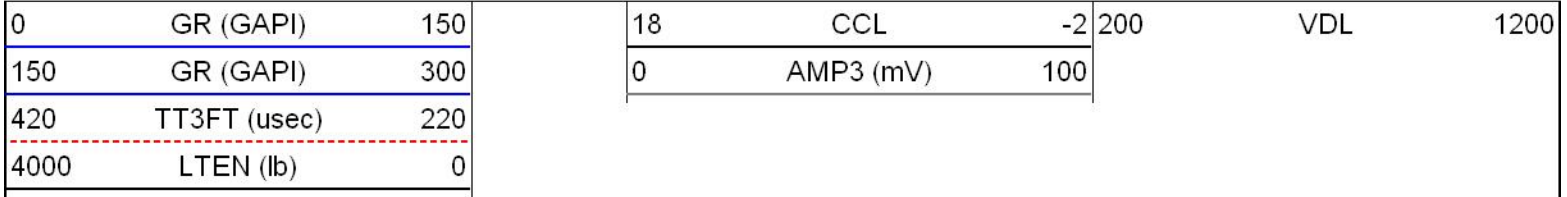


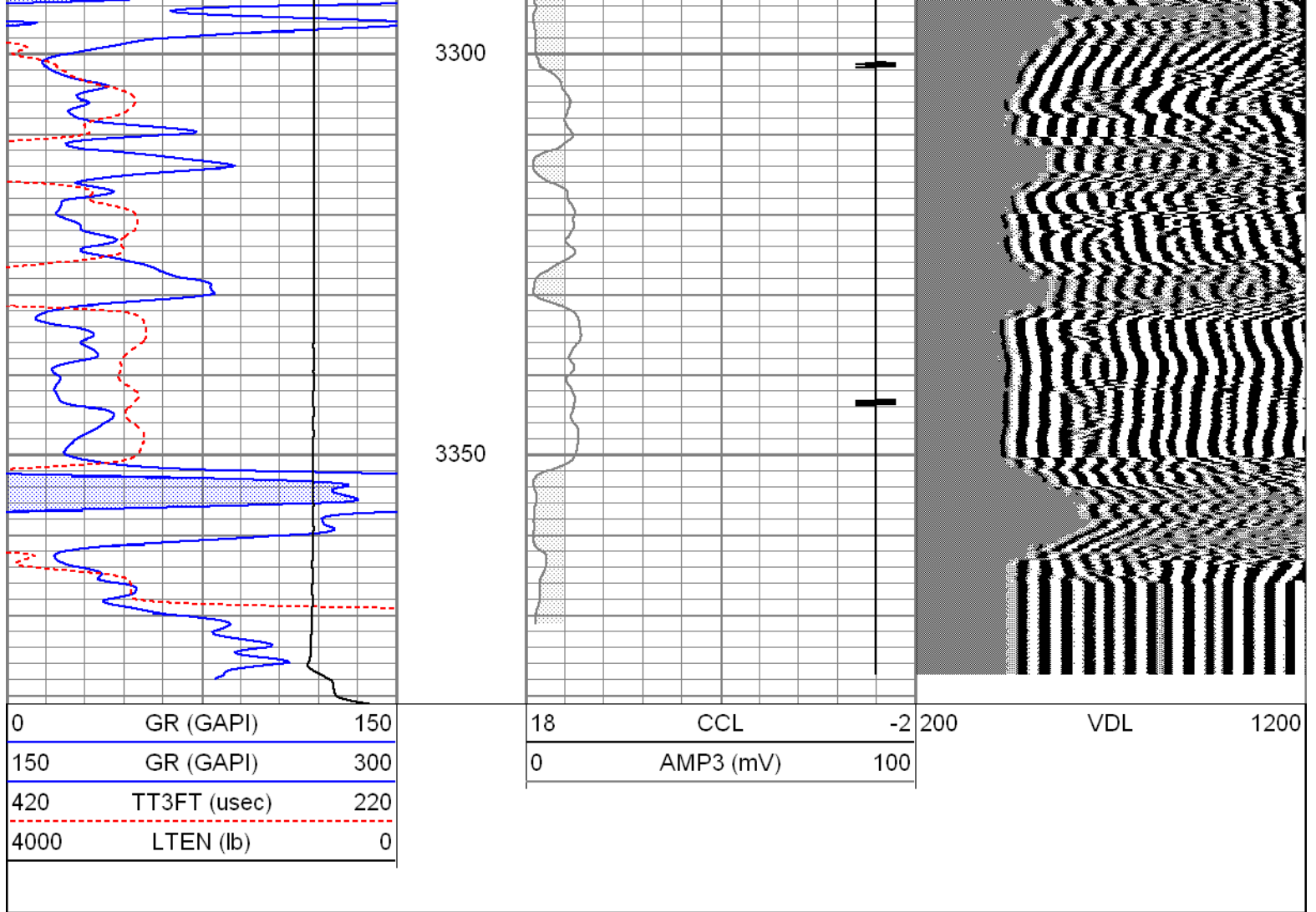




REPEAT SECTION

Database File cmx_susank.db
 Dataset Pathname grcbl/pass3.1
 Presentation Format cbl
 Dataset Creation Thu Oct 01 11:20:34 2015
 Charted by Depth in Feet scaled 1:240





Calibration Report

Database File cmx_susank.db
 Dataset Pathname grcbl/pass5.1
 Dataset Creation Thu Oct 01 11:25:54 2015

Gamma Ray Calibration Report

Serial Number: 080616
 Tool Model: 275D_INC
 Performed: Thu Oct 01 08:41:07 2015

Calibrator Value: 200.0 GAPI
 Background Reading: 50.0 cps
 Calibrator Reading: 250.0 cps

Sensitivity: 1.3000 GAPI/cps

Inclinometer Calibration Report

Performed: Tue Apr 07 10:16:42 2009

	Low Read.	High Read.	Low Ref.	High Ref.		Gain	Offset
X Accelerometer	-3585.20	3595.40	-1.00	1.00	gee	0.00	-0.00
Y Accelerometer	-3619.40	3520.00	-1.00	1.00	gee	0.00	0.01

Z Accelerometer	-104.20	3565.60	0.00	1.00	gee	0.00	0.03
RB						1.00	0.00

Segmented Cement Bond Log Calibration Report

Serial Number:	080321		
Tool Model:	ProbeRadial		
Calibration Casing Diameter:	5.500	in	
Calibration Depth:	1015.058	ft	

Master Calibration, performed Thu Oct 01 08:48:04 2015:

	Raw (v)		Calibrated (mv)		Results	
	Zero	Cal	Zero	Cal	Gain	Offset
3'	-0.011	1.007	1.700	71.921	68.933	2.490
CAL	1.242	1.213				
5'	-0.010	1.088	1.700	71.921	63.920	2.371
SUM						
S1	-0.011	1.070	0.000	72.000	66.579	0.745
S2	-0.012	1.063	0.000	72.000	67.001	0.774
S3	-0.011	1.016	0.000	72.000	70.098	0.796
S4	-0.012	0.988	0.000	72.000	72.044	0.845
S5	-0.012	0.972	0.000	72.000	73.198	0.880
S6	-0.012	0.985	0.000	72.000	72.260	0.834
S7	-0.011	1.008	0.000	72.000	70.643	0.771
S8	-0.011	1.036	0.000	72.000	68.750	0.760

Internal Reference Calibration, performed Wed Dec 31 17:00:00 1969:

	Raw (v)		Calibrated (v)		Results	
	Zero	Cal	Zero	Cal	Gain	Offset
CAL	0.000	0.000	1.242	1.213	1.000	0.000

Air Zero Calibration, performed Thu Oct 01 08:47:27 2015:

	Raw (v)	Calibrated (v)	Results
	Zero	Zero	Offset
3'	0.000	0.000	0.000
5'	0.000	0.000	0.000
SUM			
S1	0.000	0.000	0.000
S2	0.000	0.000	0.000
S3	0.000	0.000	0.000
S4	0.000	0.000	0.000
S5	0.000	0.000	0.000
S6	0.000	0.000	0.000
S7	0.000	0.000	0.000
S8	0.000	0.000	0.000



Company	CMX INC.
Well	SUSANK 2 NO. 2-19
Field	TRAPP
County	BARTON
State	KANSAS

Country