



# COMPENSATED DENSITY SIDEWALL NEUTRON LOG

Company COLT ENERGY INC.  
 Well SCHAFER # CS-18  
 Field BIG SANDY  
 County WOODSON State KANSAS

Location: API #: 15-207-29316-0000  
 SE NW SE NE  
 3520' FSL & 891' FEL  
 SEC 22 TWP 26S RGE 14E  
 Permanent Datum GL Elevation 982'  
 Log Measured From GL  
 Drilling Measured From GL  
 Other Services  
 DIL  
 Elevation  
 K.B. ---  
 D.F. ---  
 G.L. 982'

Date	12-15-2015
Run Number	ONE
Depth Driller	1453'
Depth Logger	1453'
Bottom Logged Interval	1451'
Top Log Interval	SURFACE
Casing Driller	8.625" @ 40.40'
Casing Logger	8.625" @ 40.40'
Bit Size	6.75"
Type Fluid in Hole	WATER
Density / Viscosity	
pH / Fluid Loss	
Source of Sample	
Rm @ Meas. Temp	
Rmf @ Meas. Temp	
Rmc @ Meas. Temp	
Source of Rmf / Rmc	
Rm @ BHT	
Time Circulation Stopped	
Time Logger on Bottom	
Maximum Recorded Temperature	
Equipment Number	OW2
Location	HOMINY, OK
Recorded By	LOWERY
Witnessed By	MS. BALLARD

<<< Fold Here >>>

All interpretations are opinions based on inferences from electrical or other measurements and we cannot and do not guarantee the accuracy or correctness of any interpretation, and we shall not, except in the case of gross or willful negligence on our part, be liable or responsible for any loss, costs, damages, or expenses incurred or sustained by anyone resulting from any interpretation made by any of our officers, agents or employees. These interpretations are also subject to our general terms and conditions set out in our current Price Schedule.

### Comments

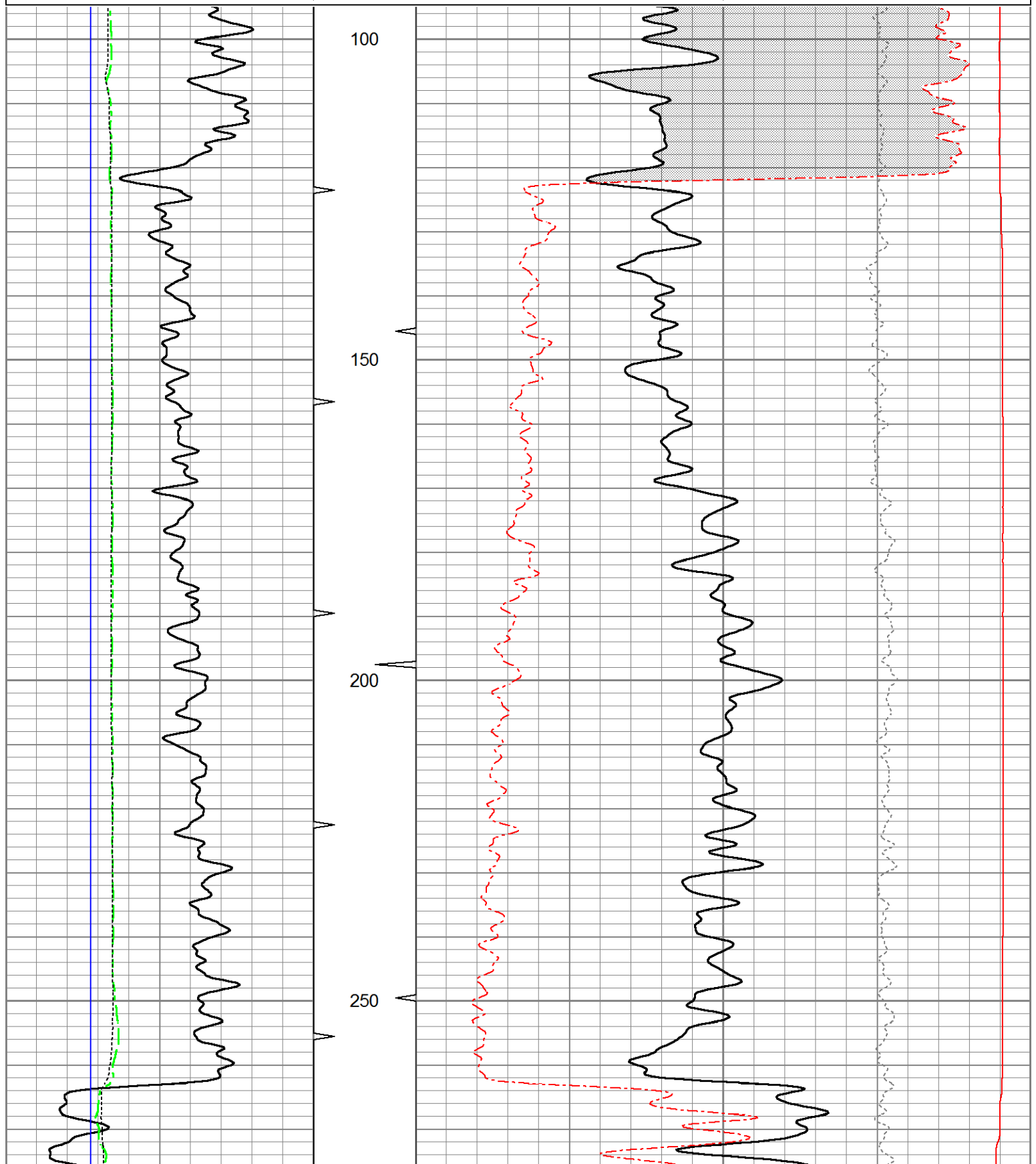
OW2-8895  
 MATRIX LIMESTON 2.71 G/CC  
 ABHV COMPUTED WITH 4 1/2 CASING  
 CREW : M. KIDD

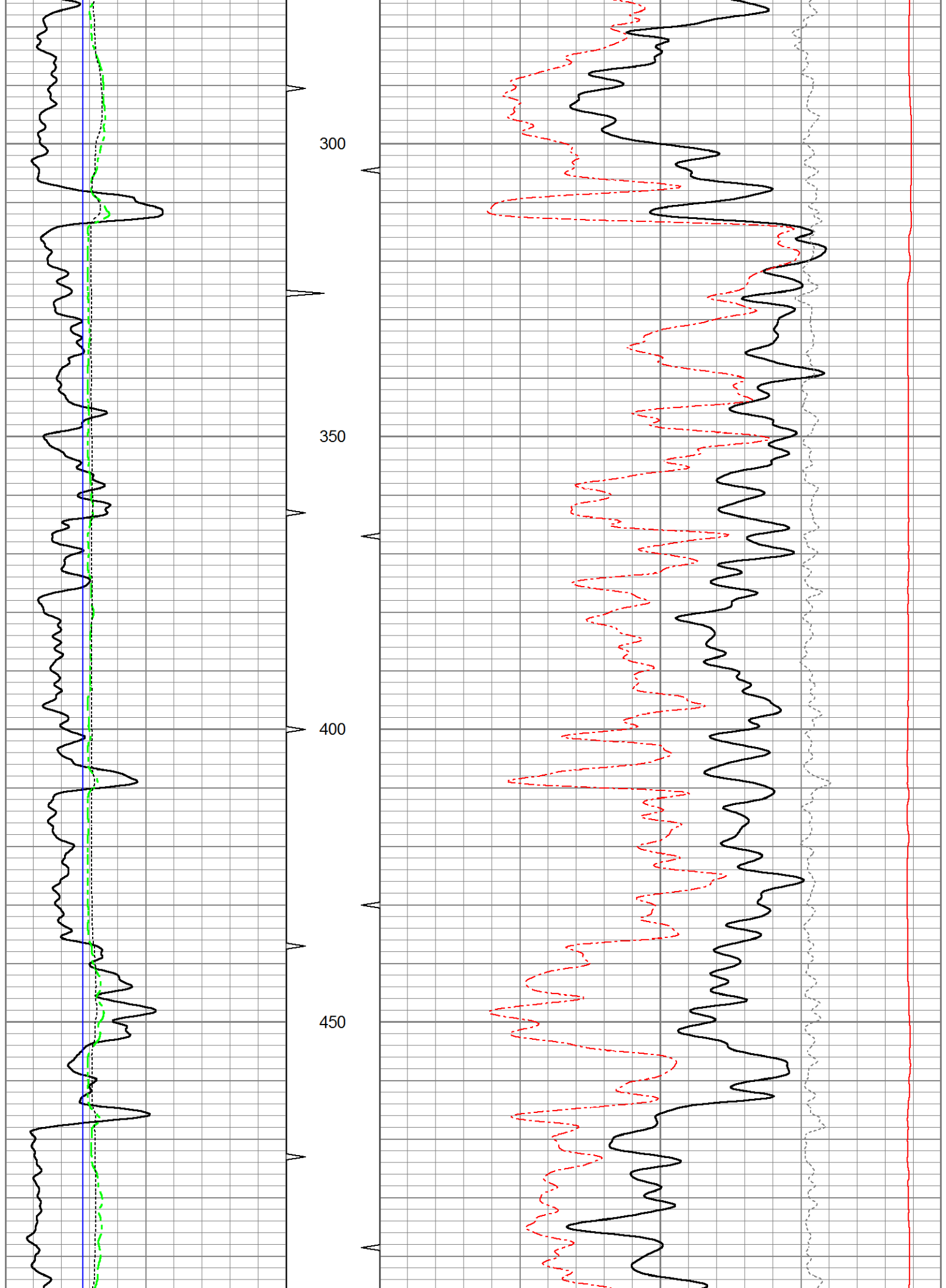


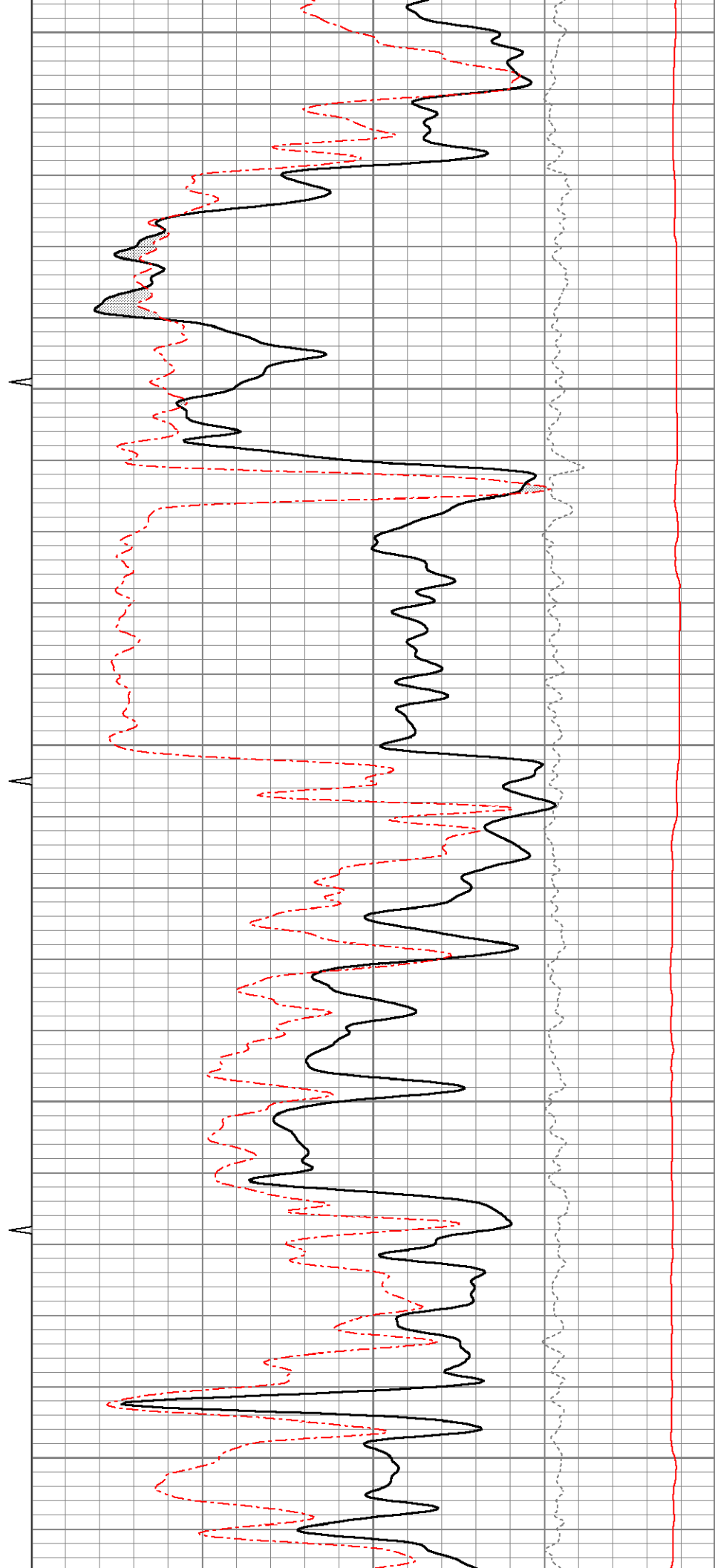
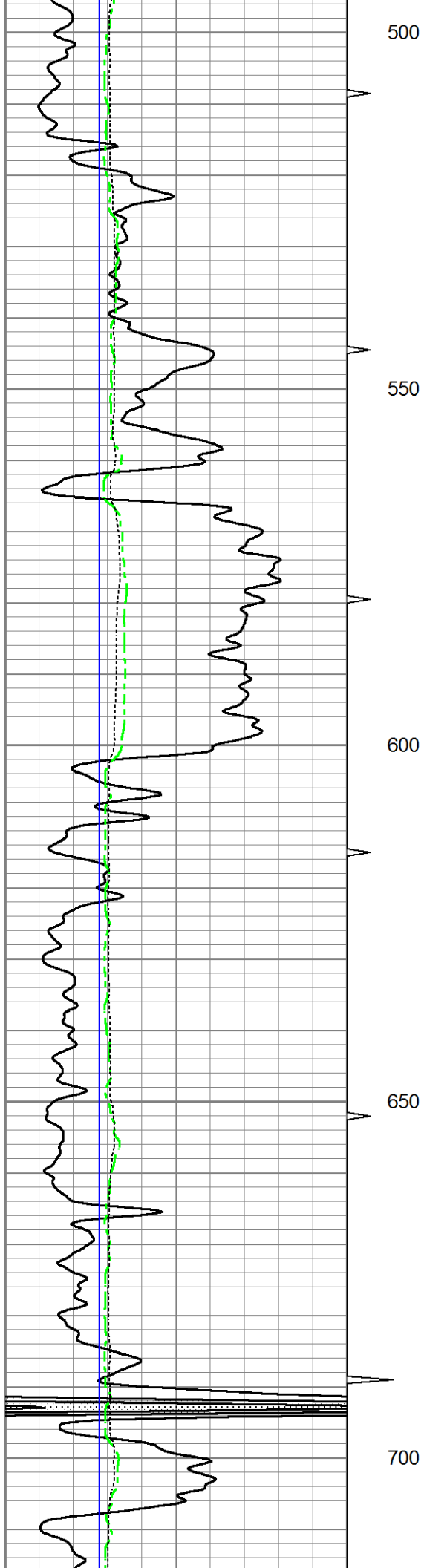
# 5" CDL/SWN SECTION

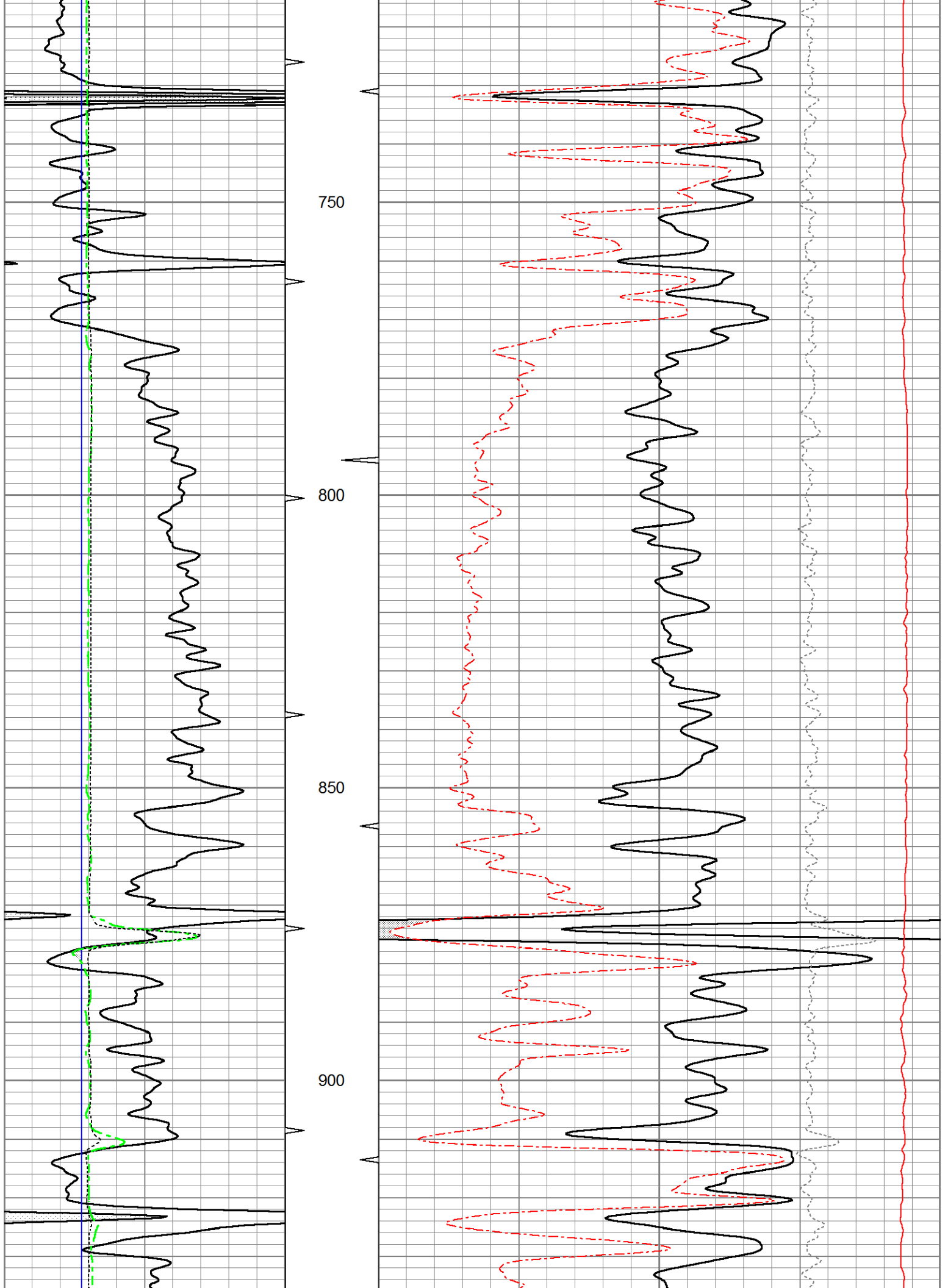
Database File ow2-8895 colt energy.db  
 Dataset Pathname CDL/pass1.3  
 Presentation Format \_neu4  
 Dataset Creation Tue Dec 15 12:11:25 2015  
 Charted by Depth in Feet scaled 1:240

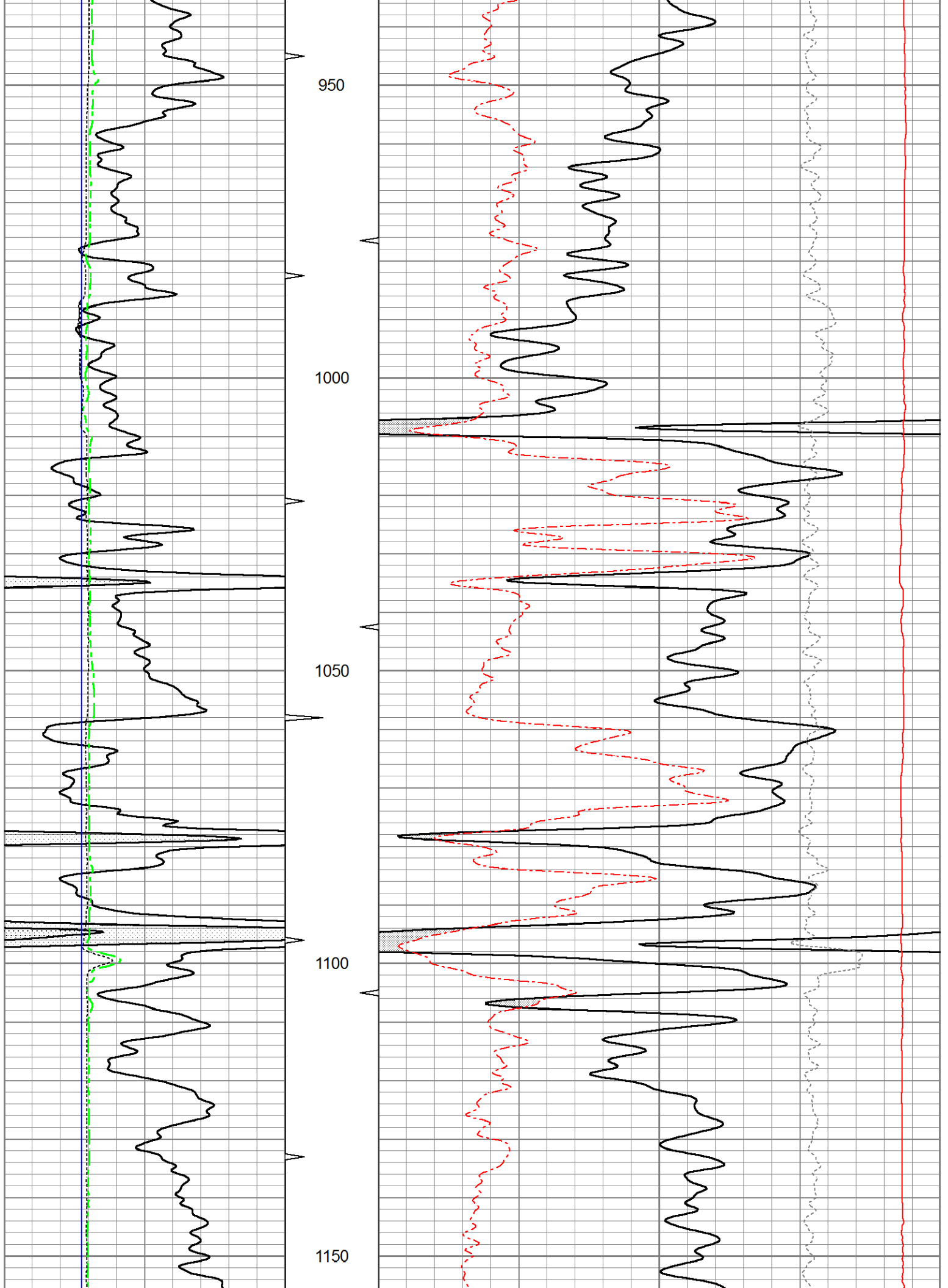
0	Gamma Ray (GAPI)	150	TBHV	30	Density Porosity (pu)	-10
4	Bit size (in)	14	ABHV	30	Neutron Porosity (pu)	-10
4	Neutron Caliper (in)	14			-0.5	Correction (g/cc) 0.5
4	Density Caliper (in)	14			5000	Line Tension (lb) 0

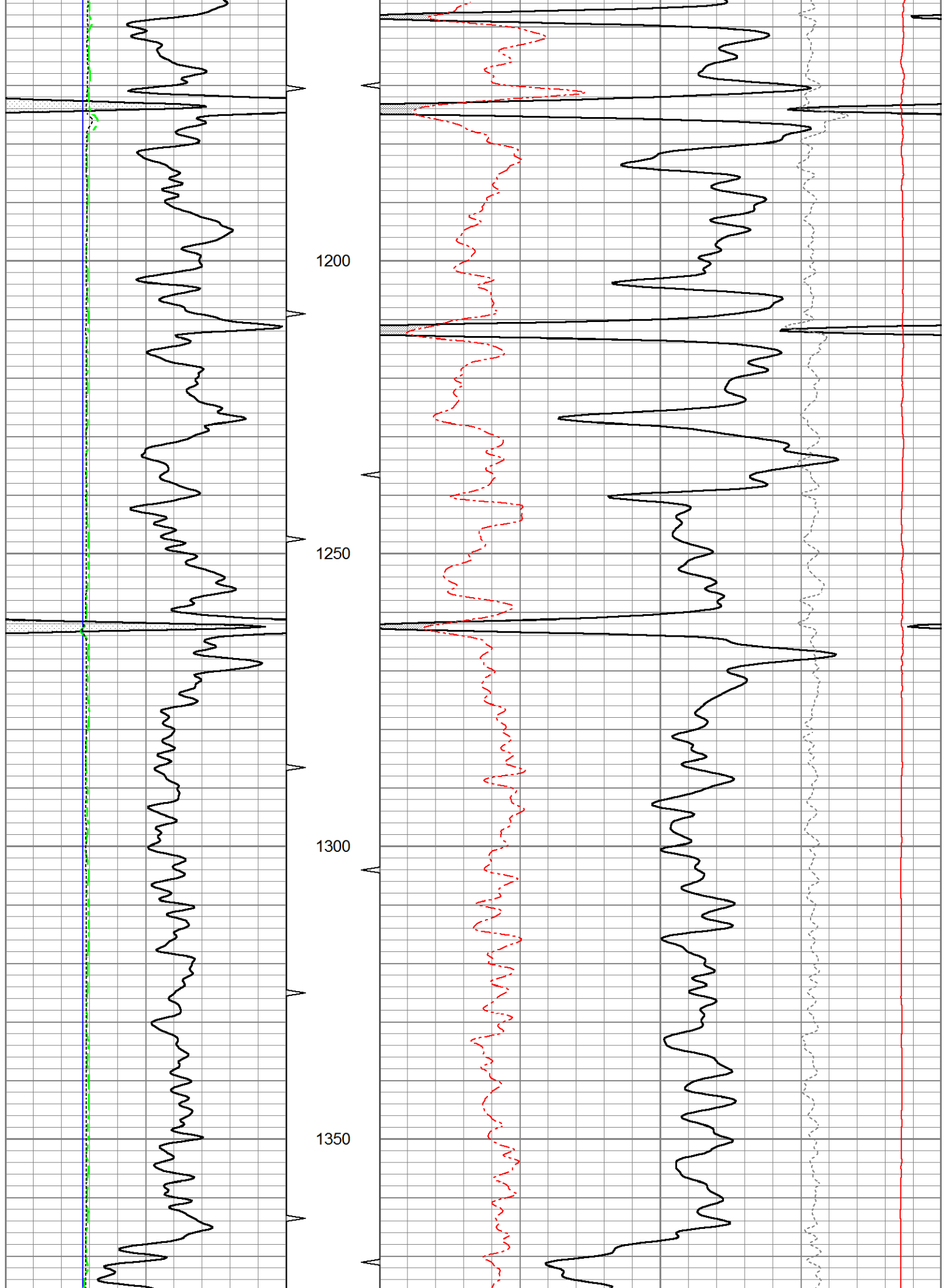


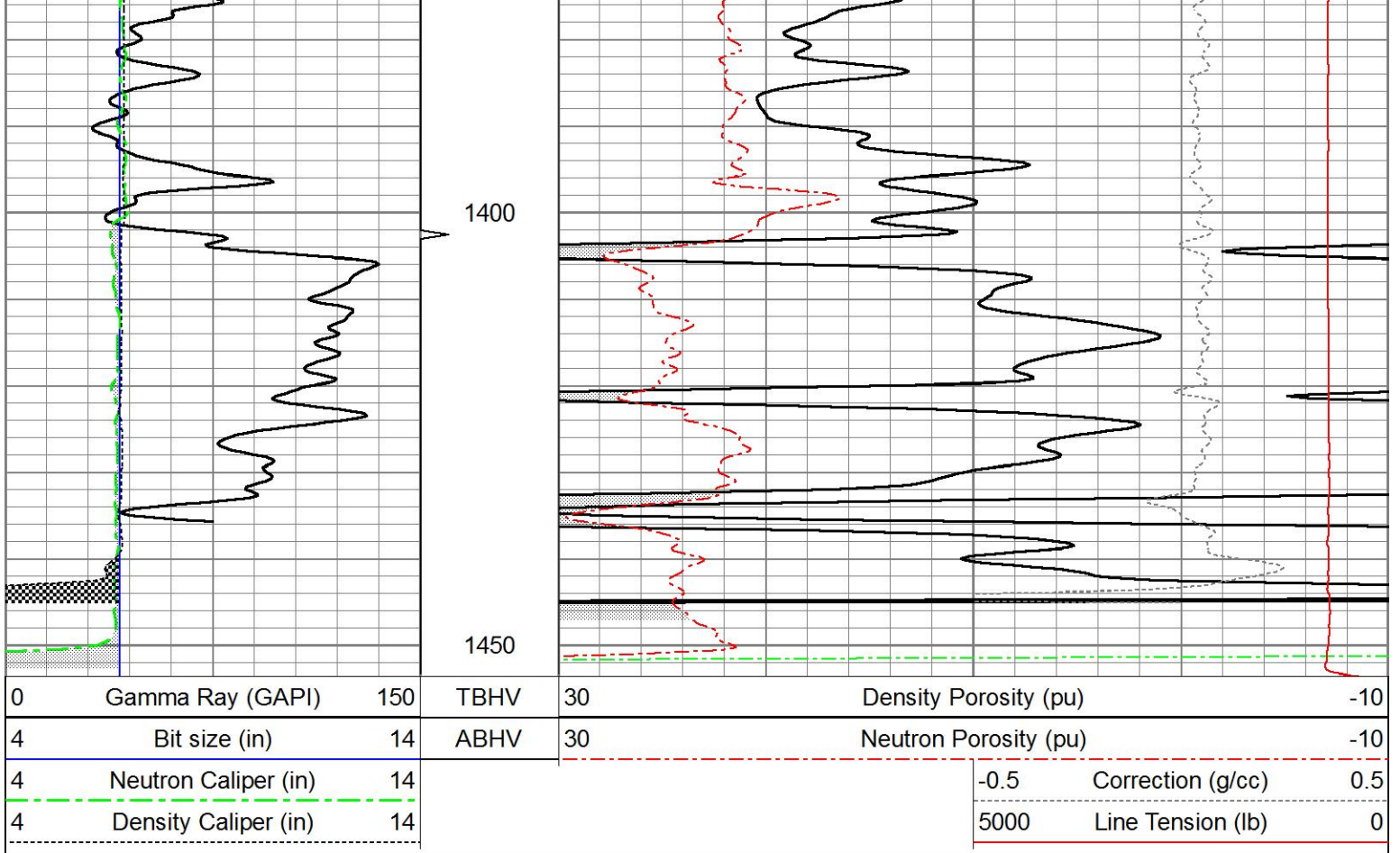








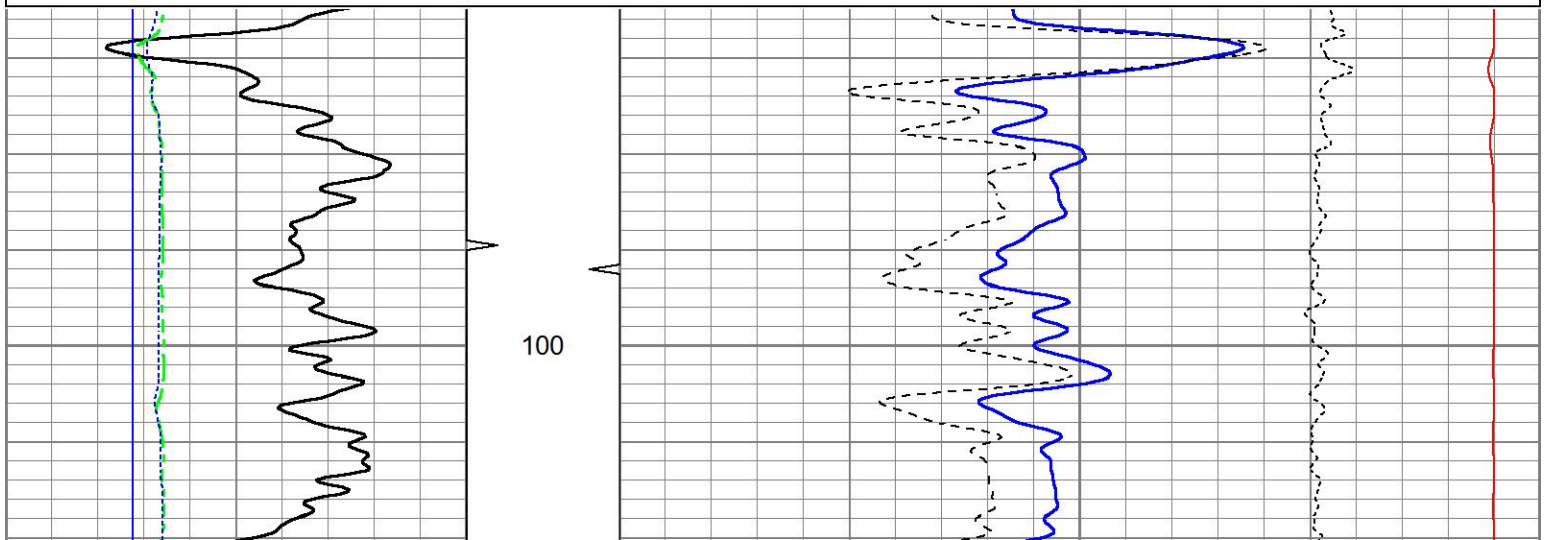


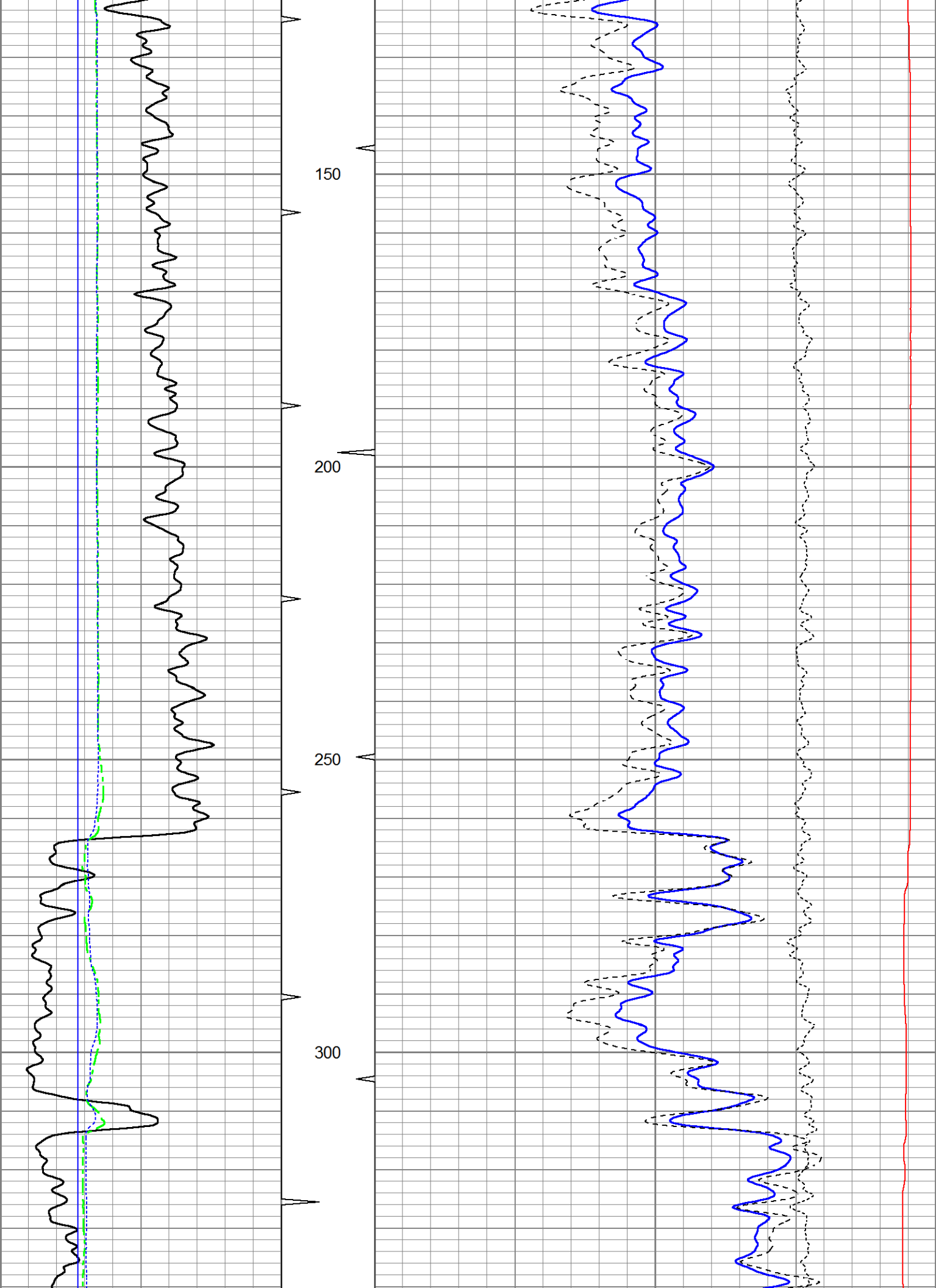


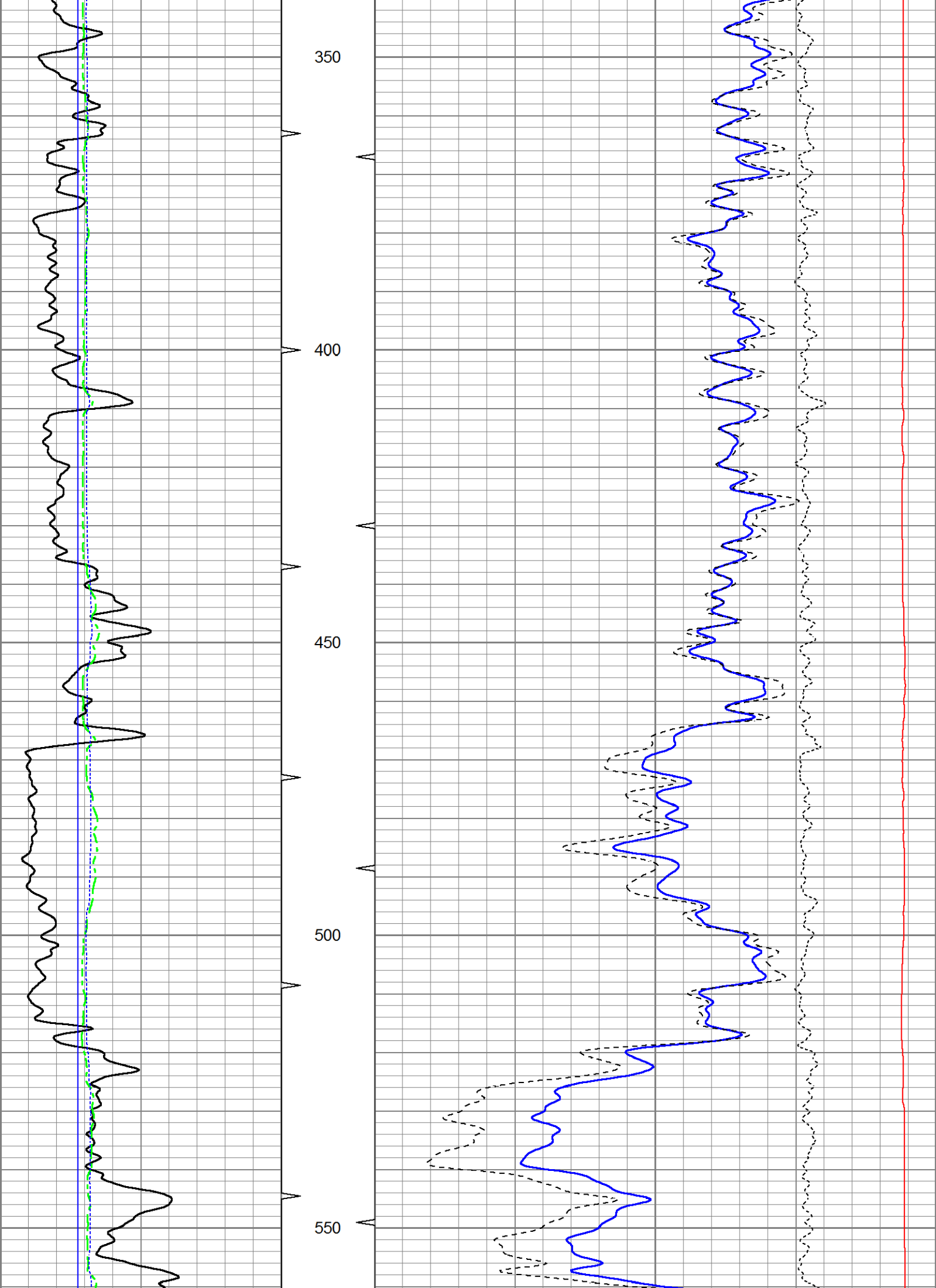
# 5" CDL SECTION

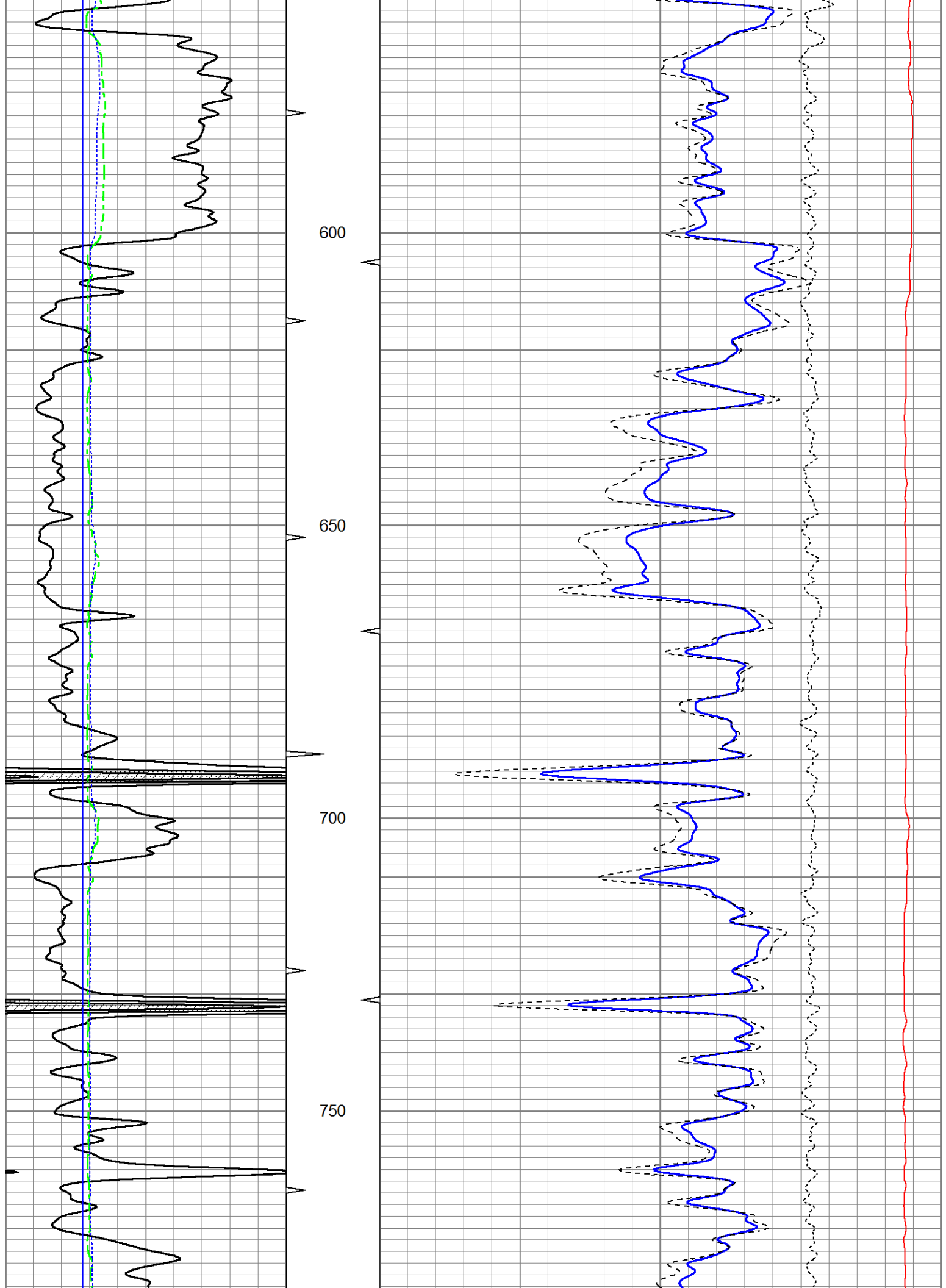
Database File ow2-8895 colt energy.db  
 Dataset Pathname CDL/pass1.2  
 Presentation Format bulk4  
 Dataset Creation Tue Dec 15 12:10:46 2015  
 Charted by Depth in Feet scaled 1:240

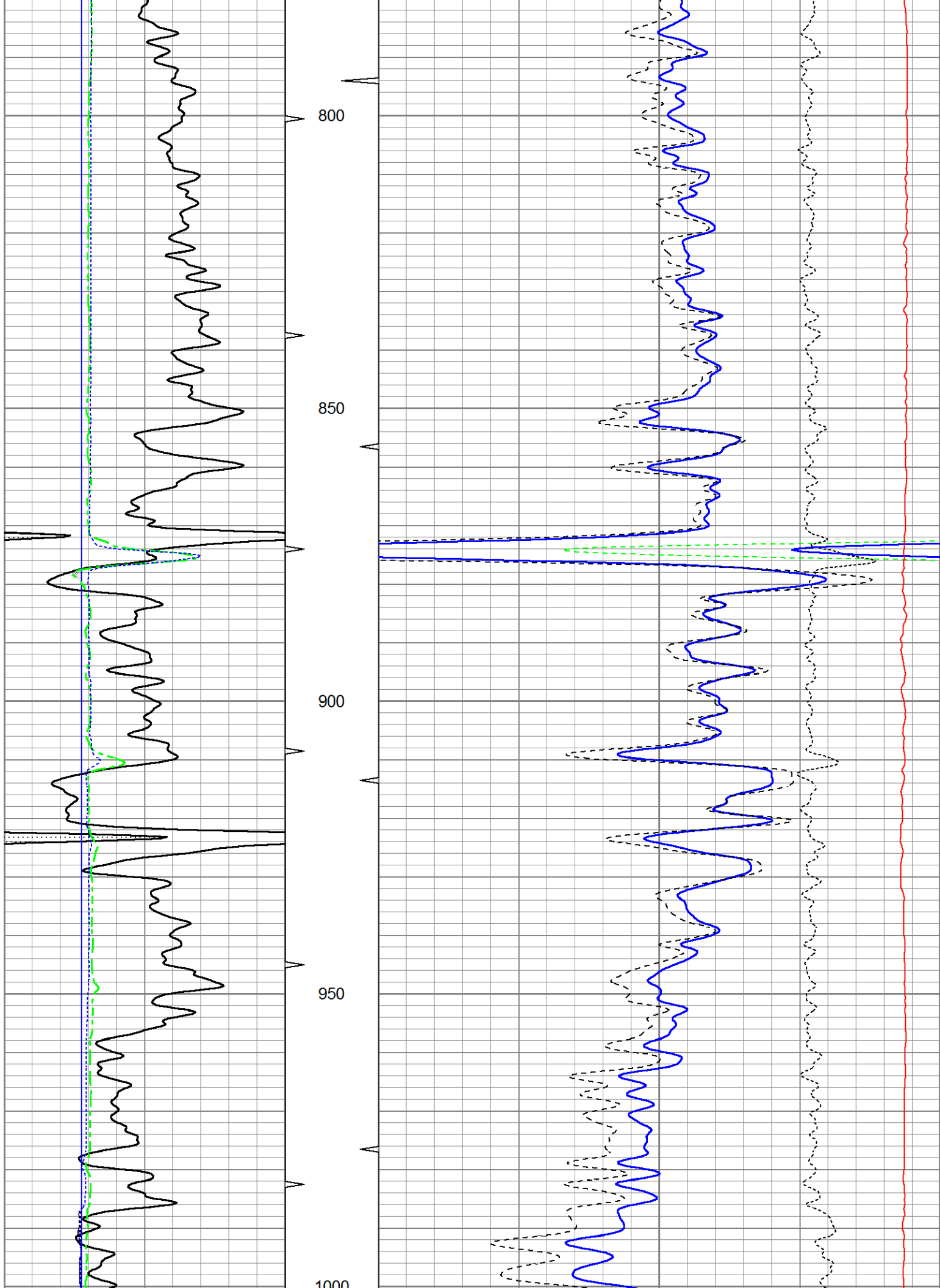
0	Gamma Ray (GAPI)	150	TBHV	2	Bulk Density (g/cc)	3
4	Bit size (in)	14	ABHV	30	Density porosity (pu)	-10
4	Neutron Caliper (in)	14			-0.5	Correction (g/cc) 0.5
4	Density Caliper (in)	14			5000	Line Tension (lb) 0

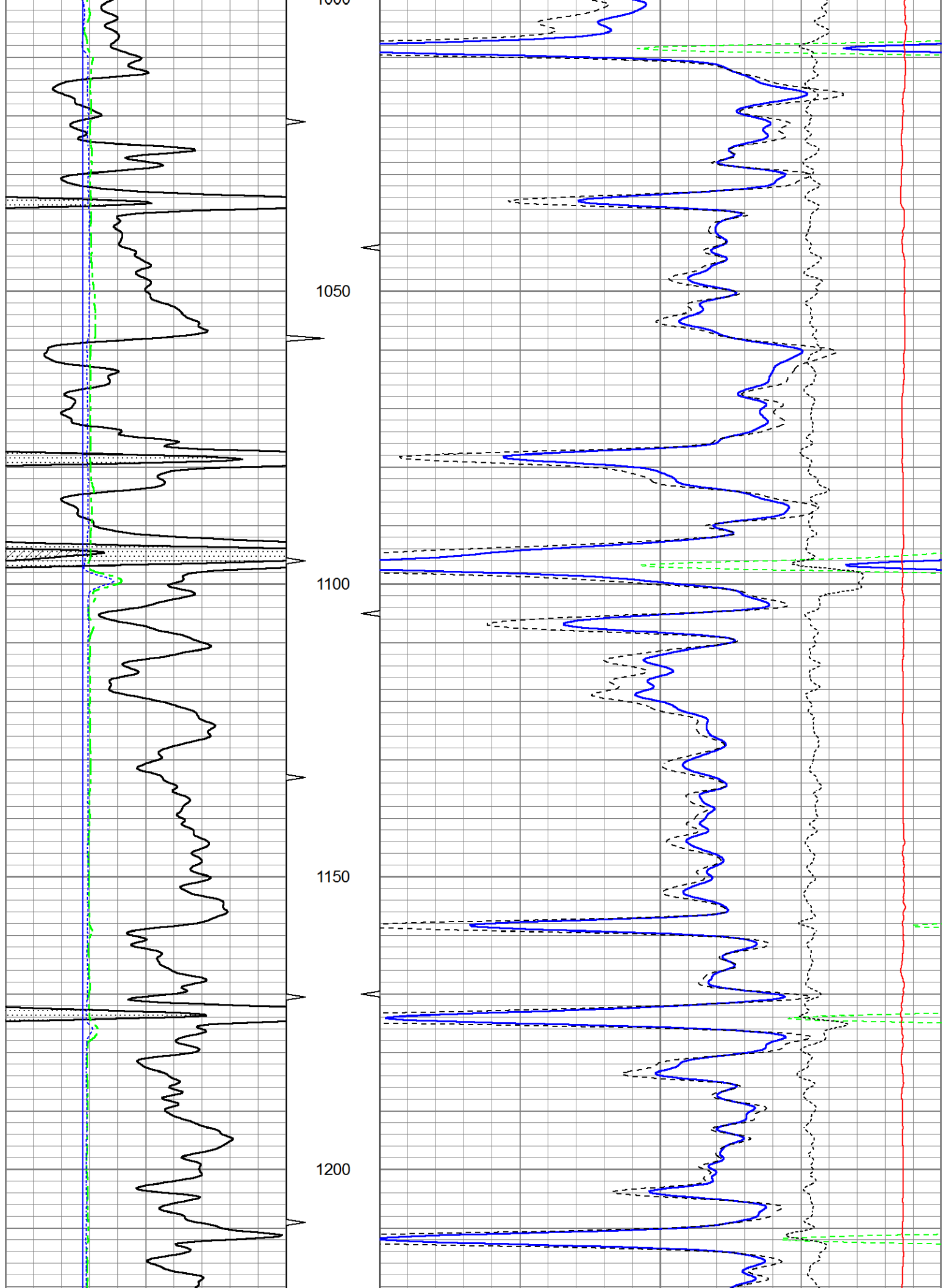


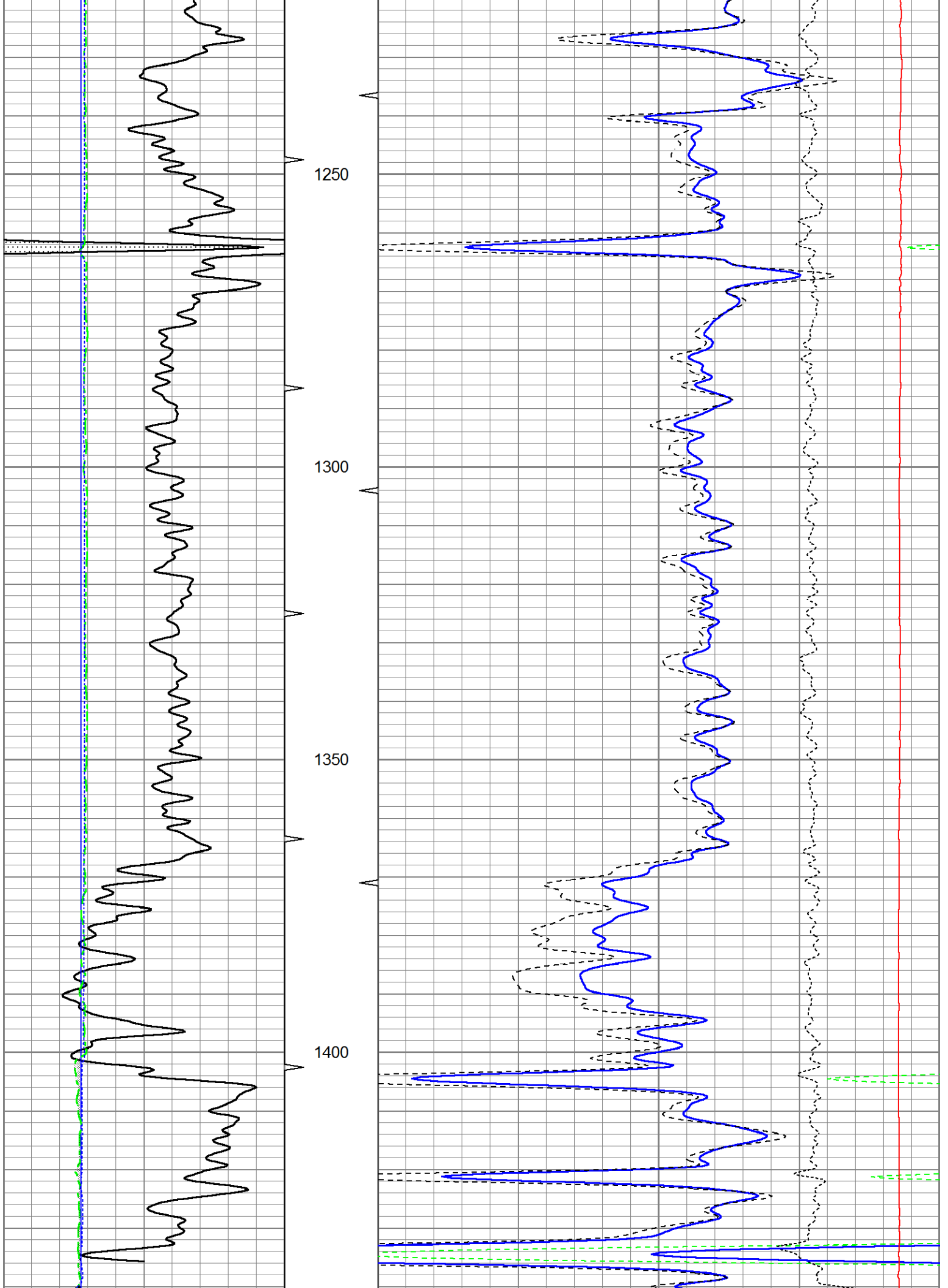












		1450				
0	Gamma Ray (GAPI)	150	TBHV	2	Bulk Density (g/cc)	3
4	Bit size (in)	14	ABHV	30	Density porosity (pu)	-10
4	Neutron Caliper (in)	14			-0.5	Correction (g/cc) 0.5
4	Density Caliper (in)	14			5000	Line Tension (lb) 0

Sensor	Offset (ft)	Schematic	Description	Length (ft)	O.D. (in)	Weight (lb)
GR	15.60		Cable-CableHead Isulation Sub	1.42	3.00	20.00
			Gamma-Oilex2122 (2122) Gamma Ray Section	2.83	3.50	75.00
LSD	10.22		Density-Oilex2122 (2122) Density Section	6.08	4.00	250.00
DCAL	9.94					
SSD	9.76					
			Neutron-Sidewall3015 (3015) Sidewall Neutron Section	7.81	4.00	150.00
SCAL	2.54					
SWN	2.15					
NEU	2.15					

Dataset:	ow2-8895 colt energy.db: field/well/CDL/pass1
Total length:	18.15 ft
Total weight:	495.00 lb
O.D.:	4.00 in