



**DUAL INDUCTION  
LL3/GR LOG**

Company **COLT ENERGY INC.**  
 Well **SCHAFFER # CS-18**  
 Field **BIG SANDY**  
 County **WOODSON** State **KANSAS**

Company **COLT ENERGY INC.**  
 Well **SCHAFFER # CS-18**  
 Field **BIG SANDY**  
 County **WOODSON**  
 State **KANSAS**

**Location:** AP1 #: 15-207-29316-0000  
 SE NW SE NE  
 3520' FSL & 891' FEL  
 SEC 22 TWP 26S RGE 14E  
 Permanent Datum **GL** Elevation **982'**  
 Log Measured From **GL**  
 Drilling Measured From **GL**

Other Services  
**CDL/SWN**  
 Elevation  
 K.B. ---  
 D.F. ---  
 G.L. 982'

Date	12-15-2015
Run Number	ONE
Depth Driller	1453'
Depth Logger	1453'
Bottom Logged Interval	1451'
Top Log Interval	SURFACE
Casing Driller	8.625" @ 40.40'
Casing Logger	8.625" @ 40.40'
Bit Size	6.75"
Type Fluid in Hole	WATER
Density / Viscosity	
pH / Fluid Loss	
Source of Sample	
Rm @ Meas. Temp	
Rmf @ Meas. Temp	
Rmc @ Meas. Temp	
Source of Rmf / Rmc	
Rm @ BHT	
Time Circulation Stopped	
Time Logger on Bottom	
Maximum Recorded Temperature	
Equipment Number	OW2
Location	HOMINY, OK
Recorded By	LOWERY
Witnessed By	MS. BALLARD

<<< Fold Here >>>

All interpretations are opinions based on inferences from electrical or other measurements and we cannot and do not guarantee the accuracy or correctness of any interpretation, and we shall not, except in the case of gross or willful negligence on our part, be liable or responsible for any loss, costs, damages, or expenses incurred or sustained by anyone resulting from any interpretation made by any of our officers, agents or employees. These interpretations are also subject to our general terms and conditions set out in our current Price Schedule.

**Comments**

**OW2-8895**  
**CREW : M. KIDD**

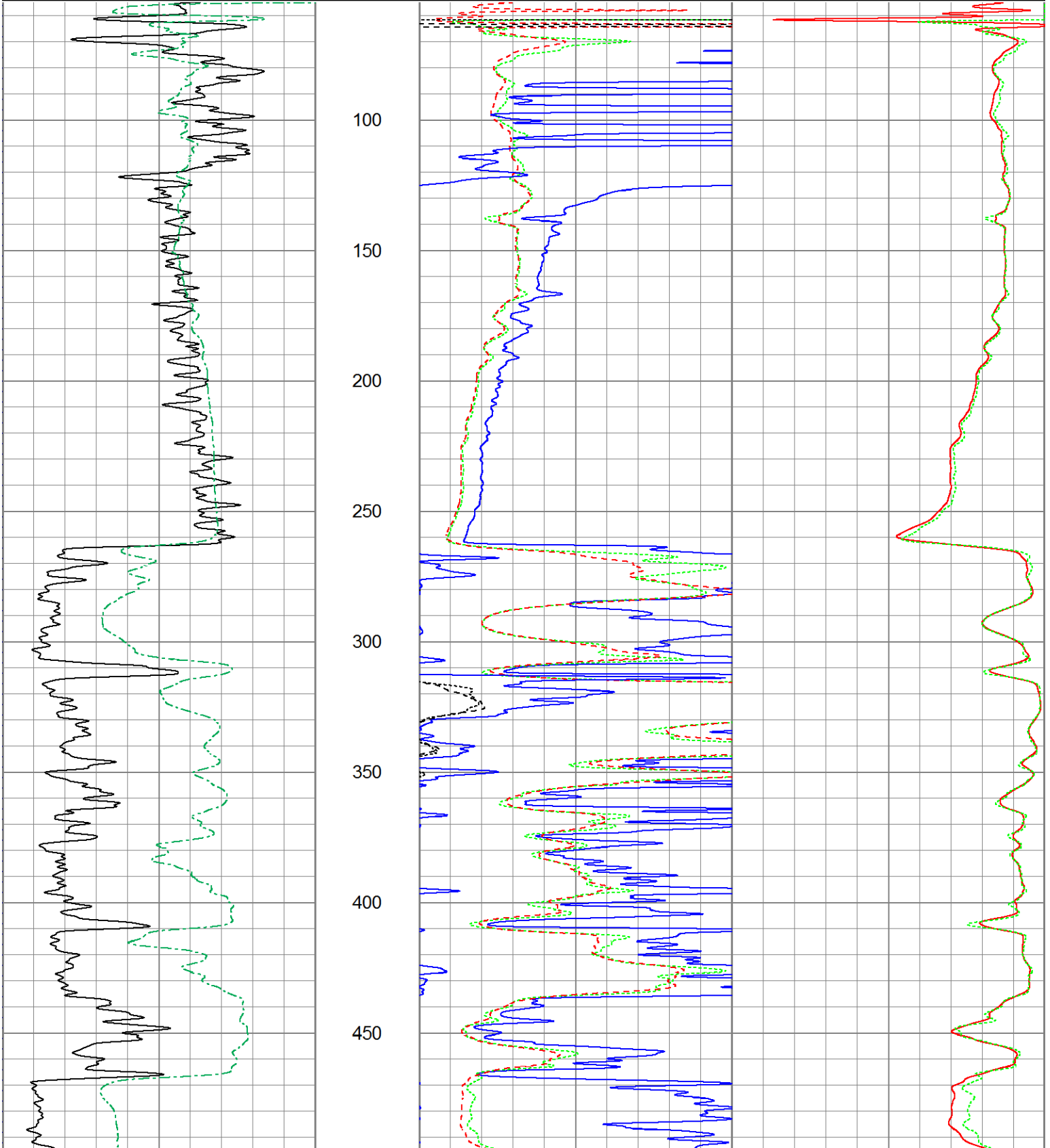


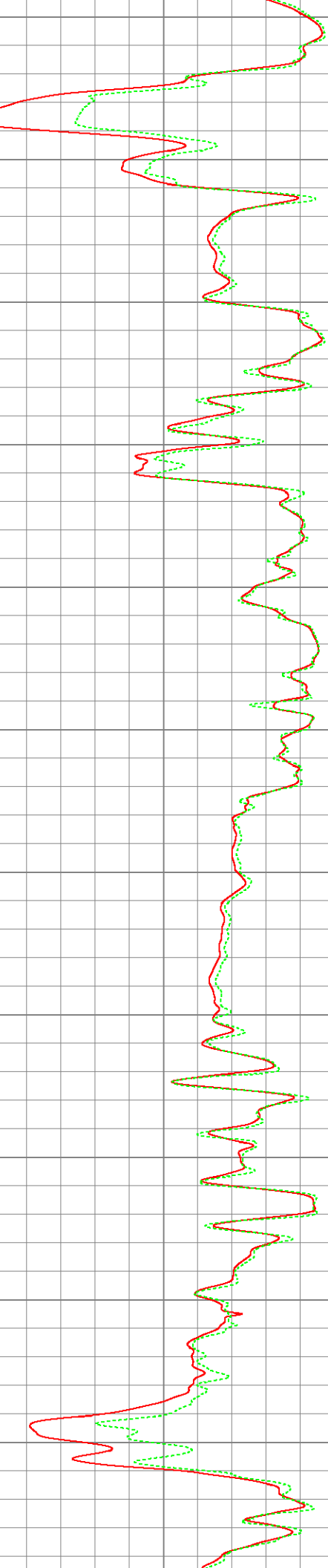
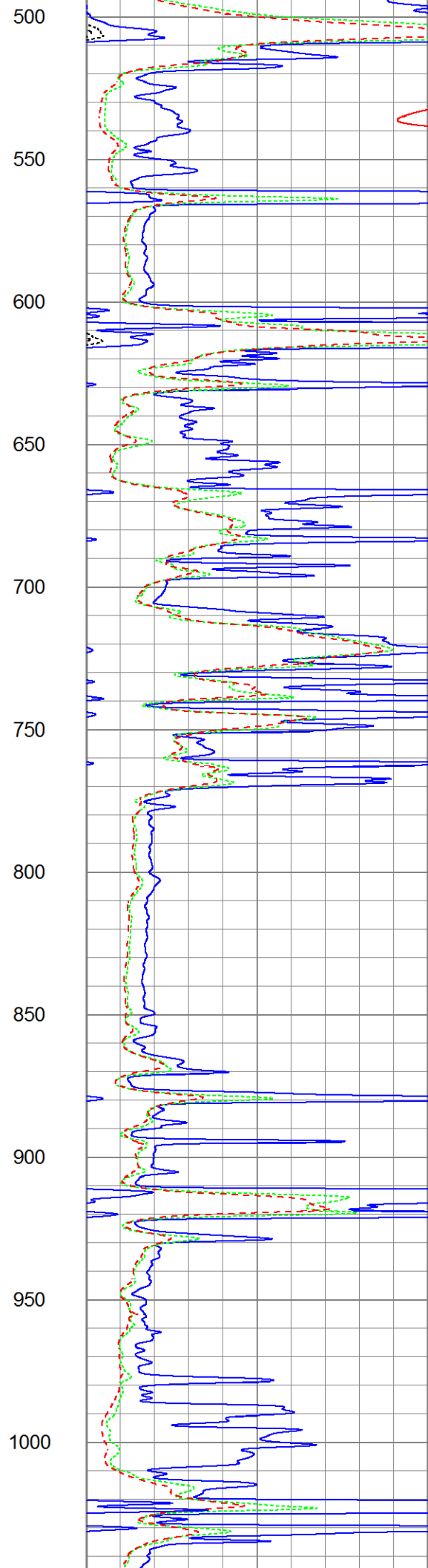
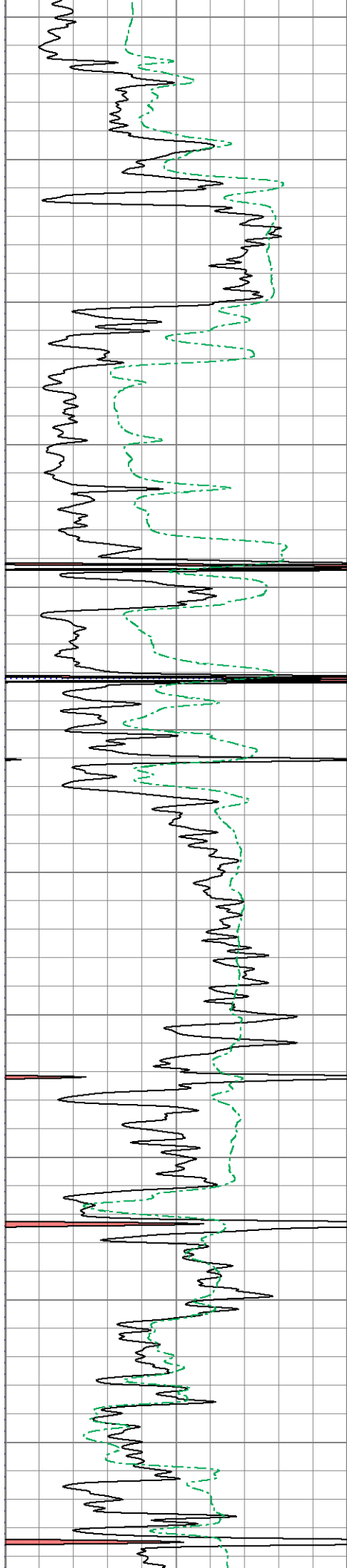
**2" DIL SECTION**

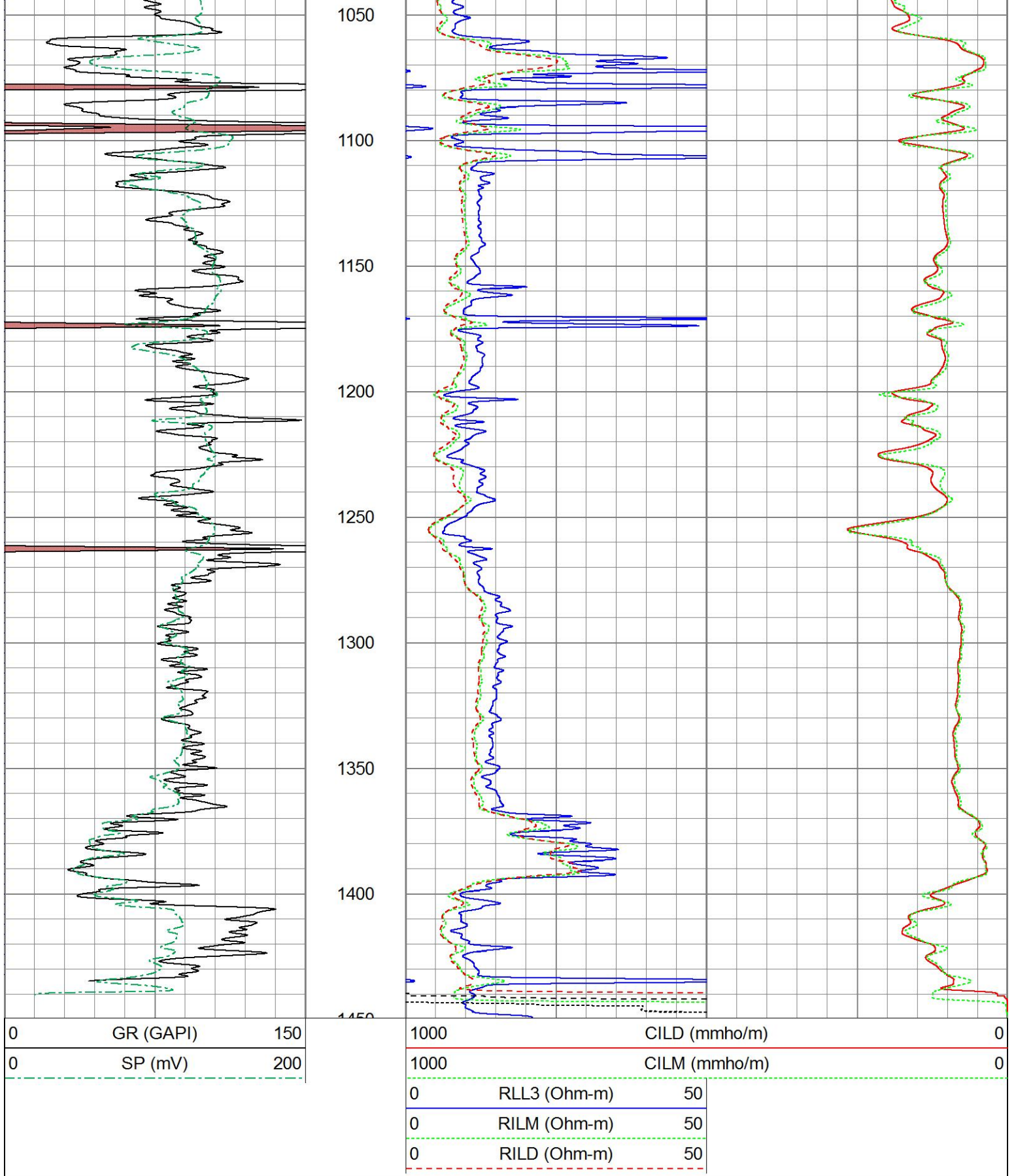
Database File ow2-8895 colt energy.db  
 Dataset Pathname DIL/pass1.2  
 Presentation Format dil2mdcol  
 Dataset Creation Tue Dec 15 12:41:27 2015  
 Charted by Depth in Feet scaled 1:600

0	GR (GAPI)	150
0	SP (mV)	200

1000	CILD (mmho/m)	0
1000	CILM (mmho/m)	0
0	RLL3 (Ohm-m)	50
0	RILM (Ohm-m)	50
0	RILD (Ohm-m)	50



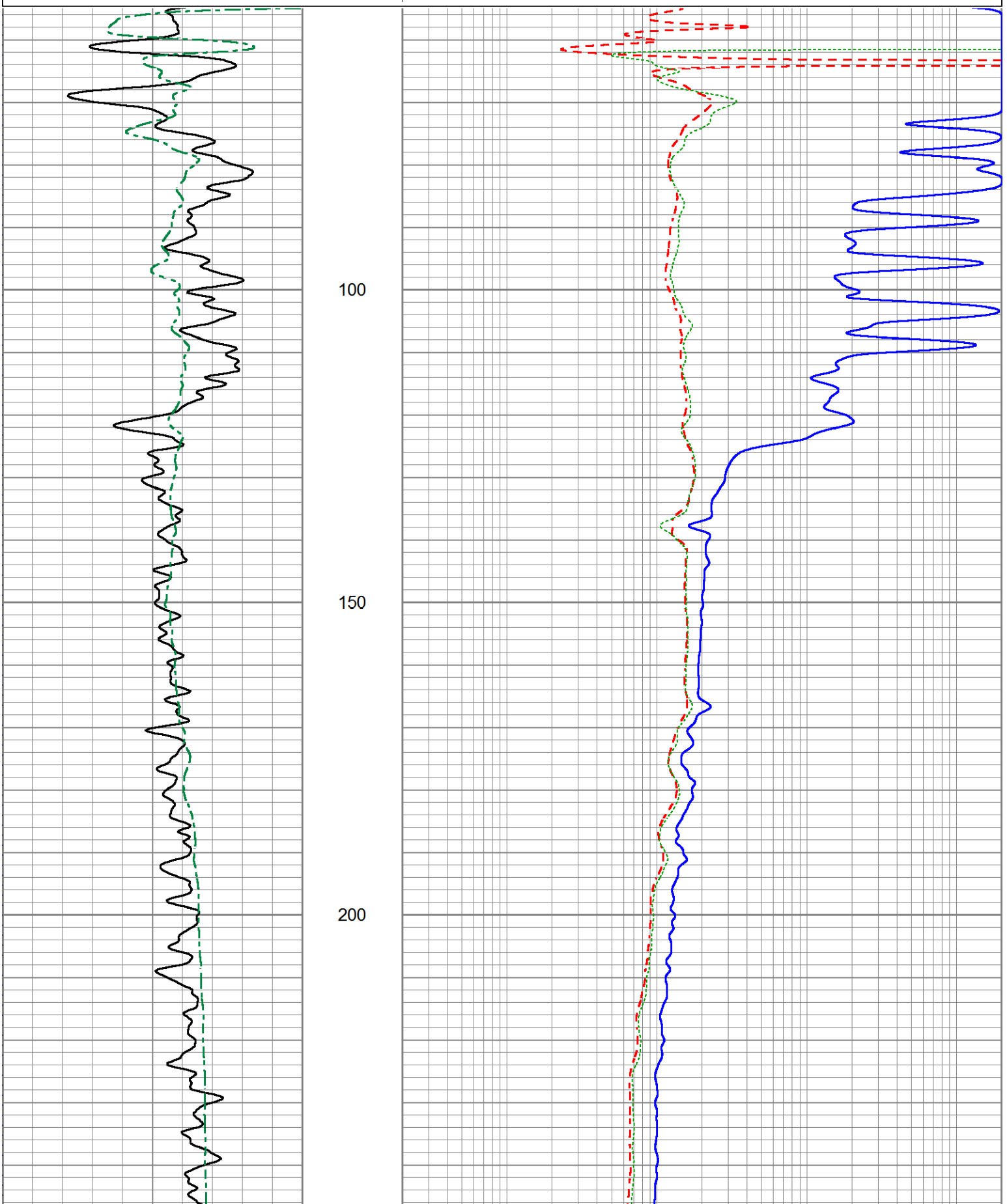




# 5" DIL SECTION

0	Gamma Ray (GAPI)	150
0	SP (mV)	200

0.2	Deep Resistivity (Ohm-m)	2000
0.2	Medium Resistivity (Ohm-m)	2000
0.2	Shallow Resistivity (Ohm-m)	2000



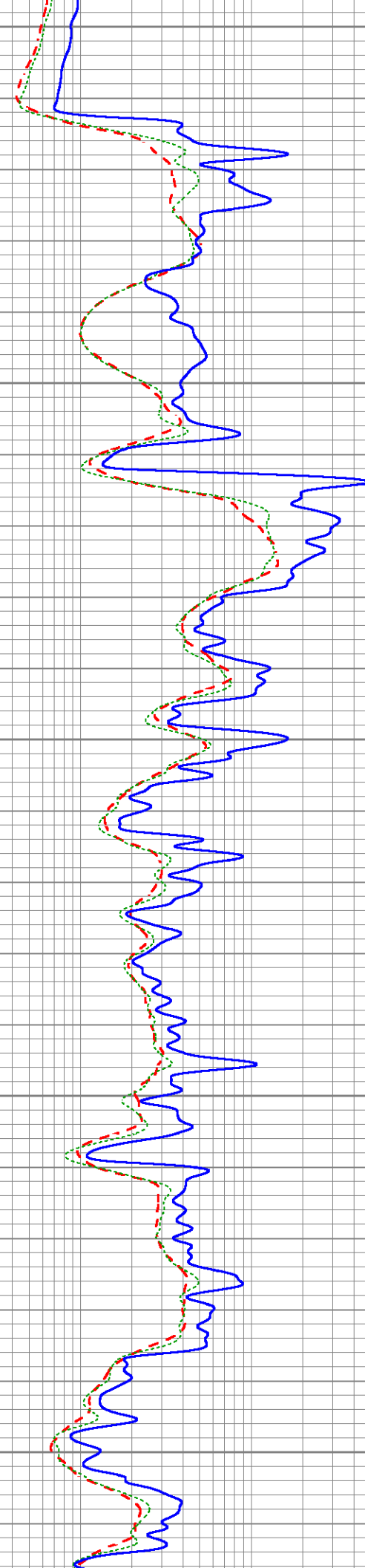
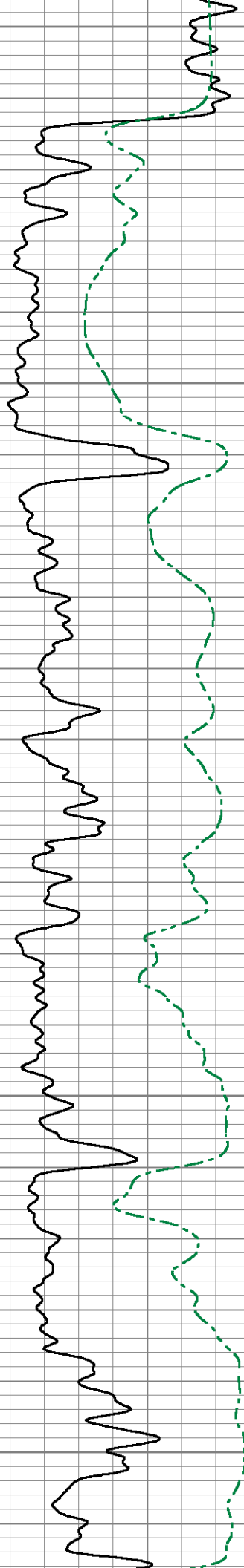
250

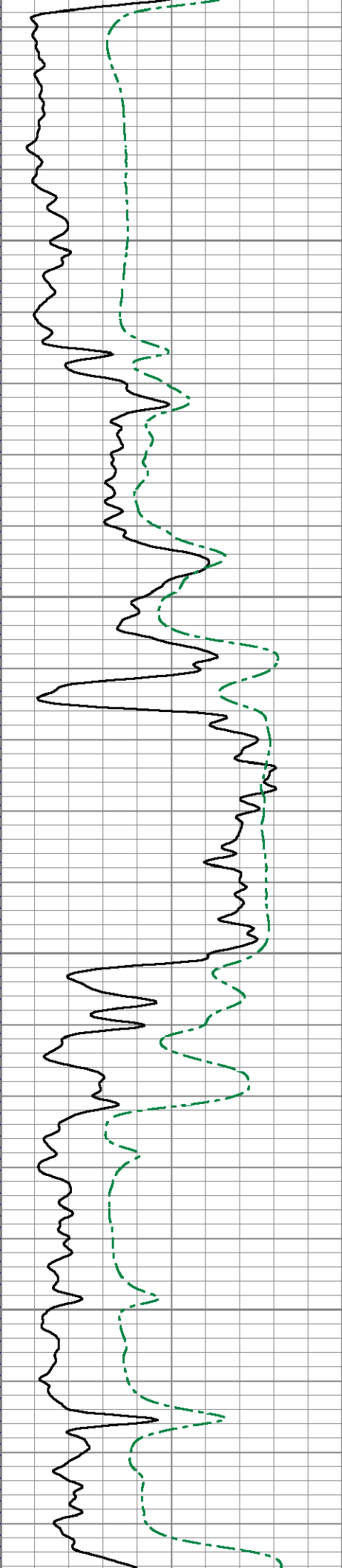
300

350

400

450



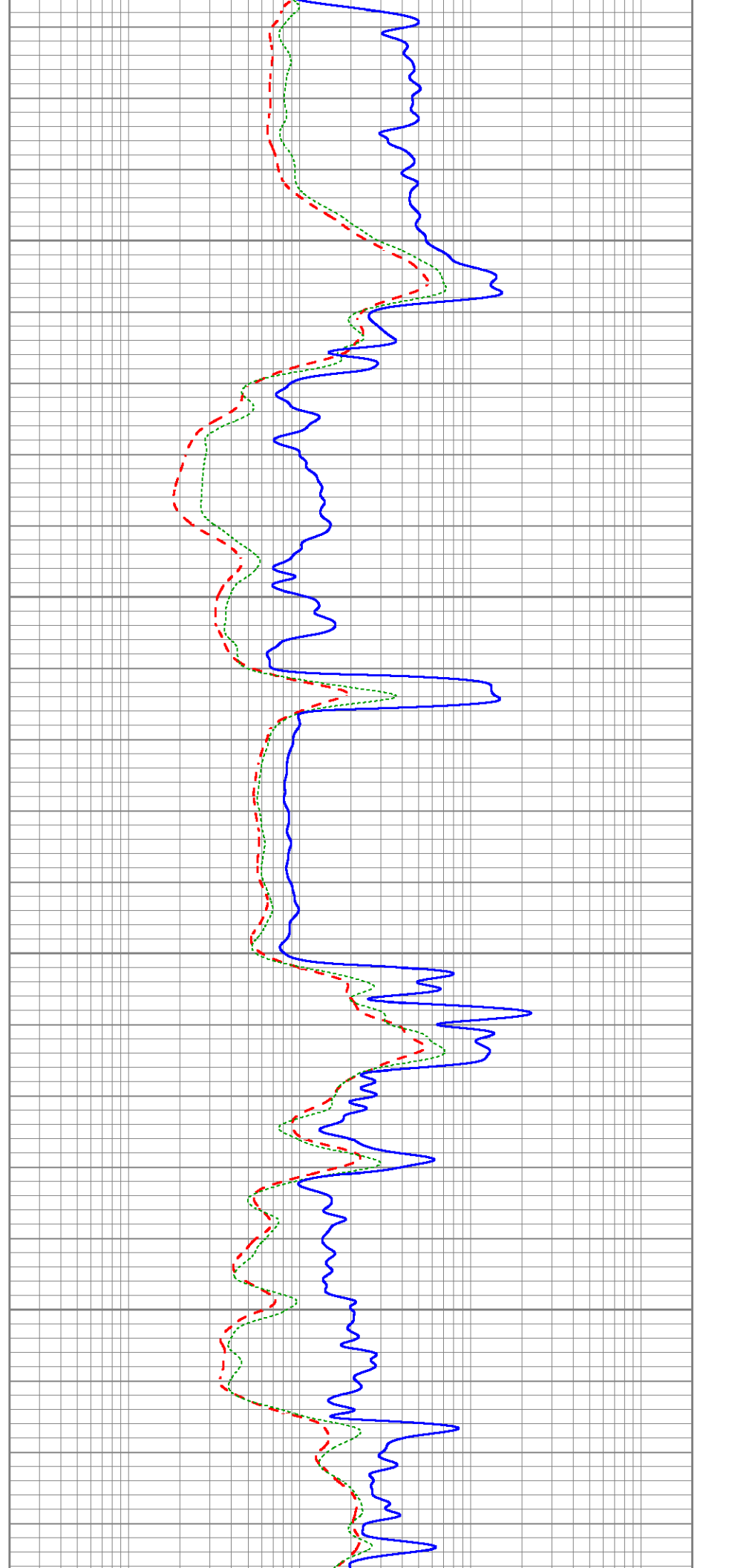


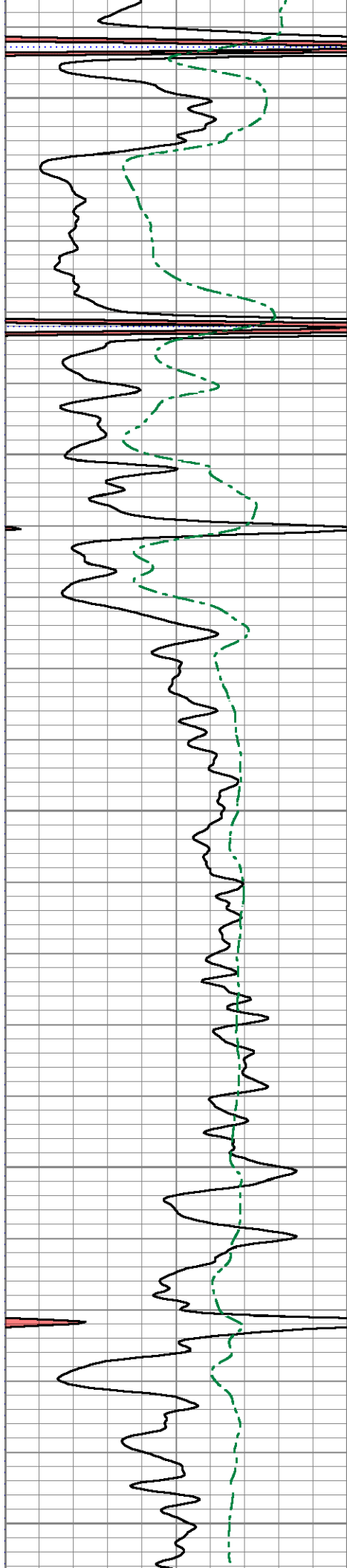
500

550

600

650





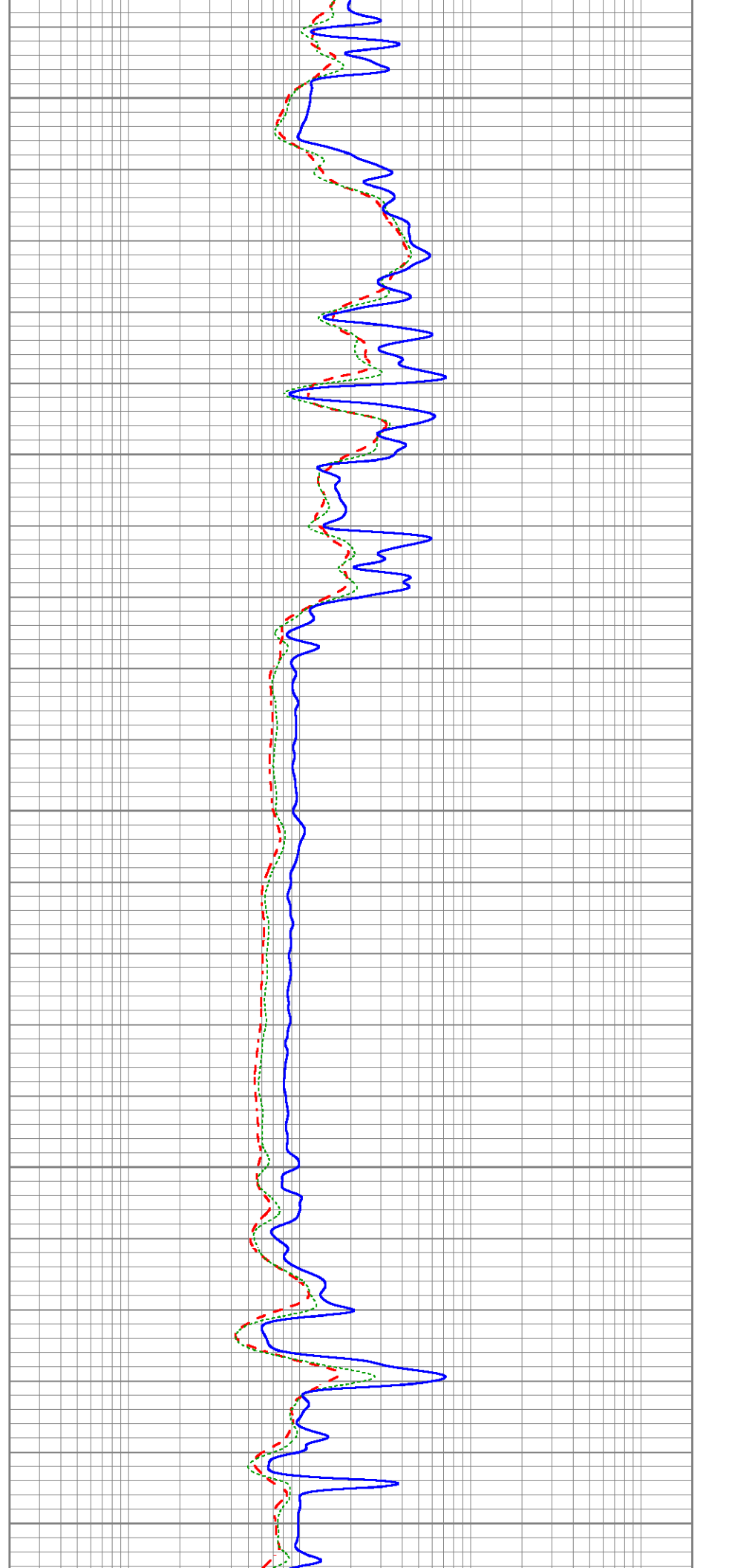
700

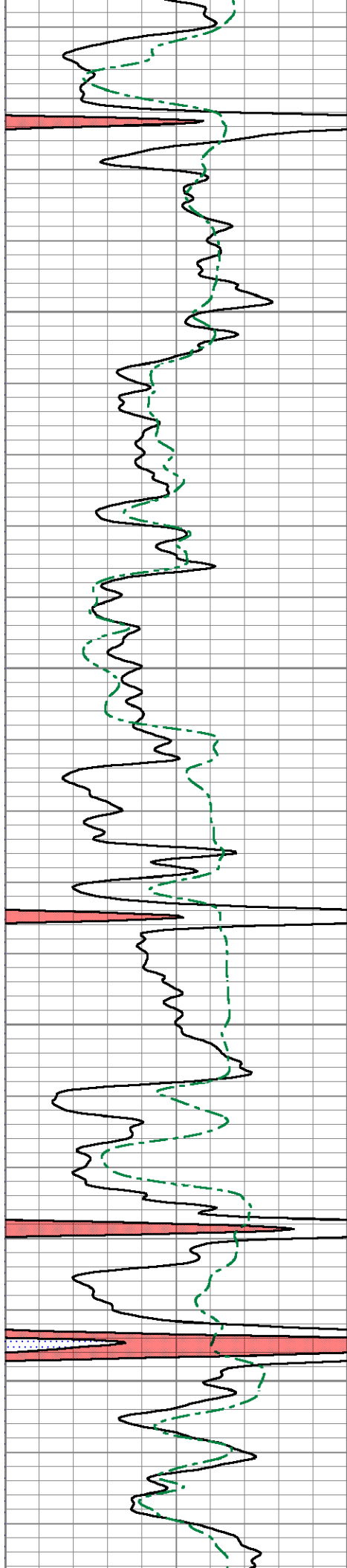
750

800

850

900



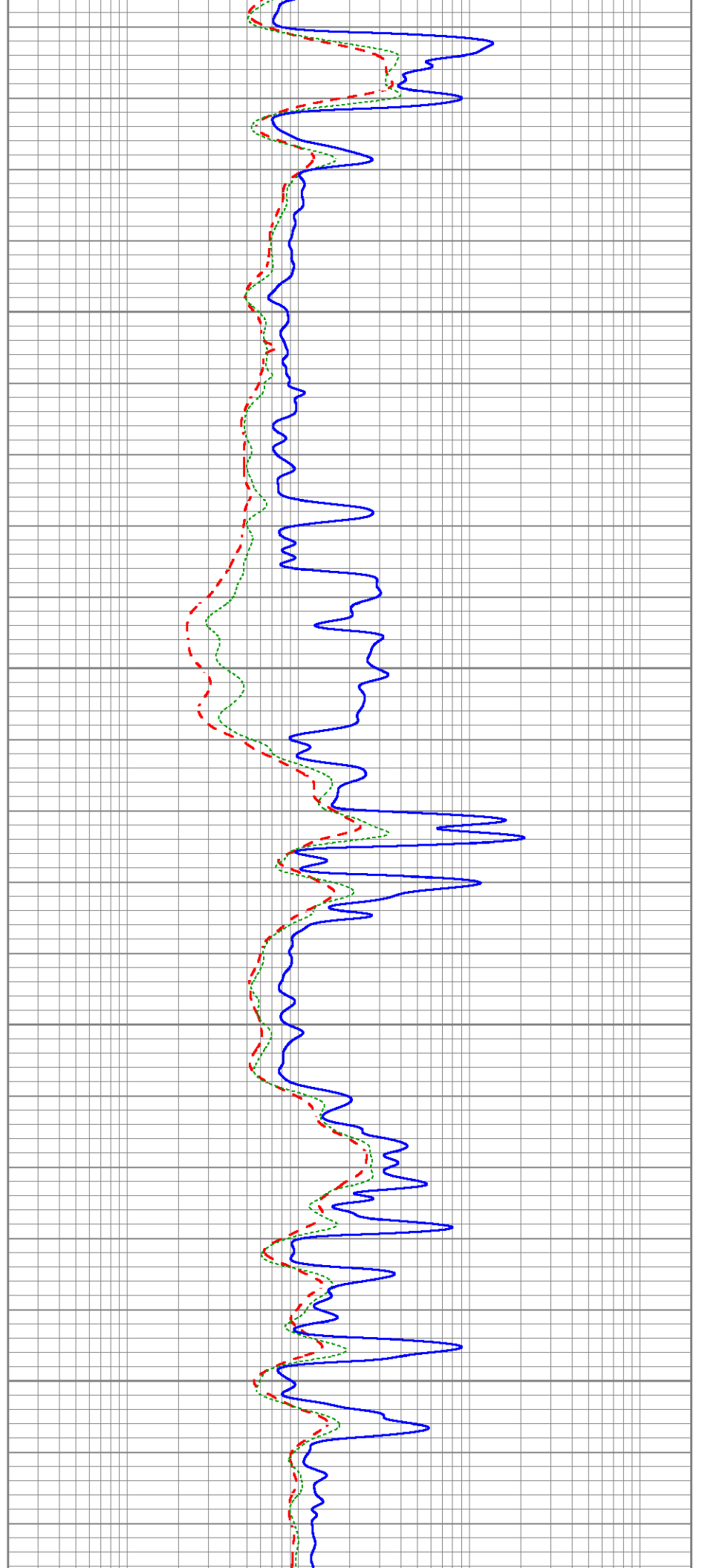


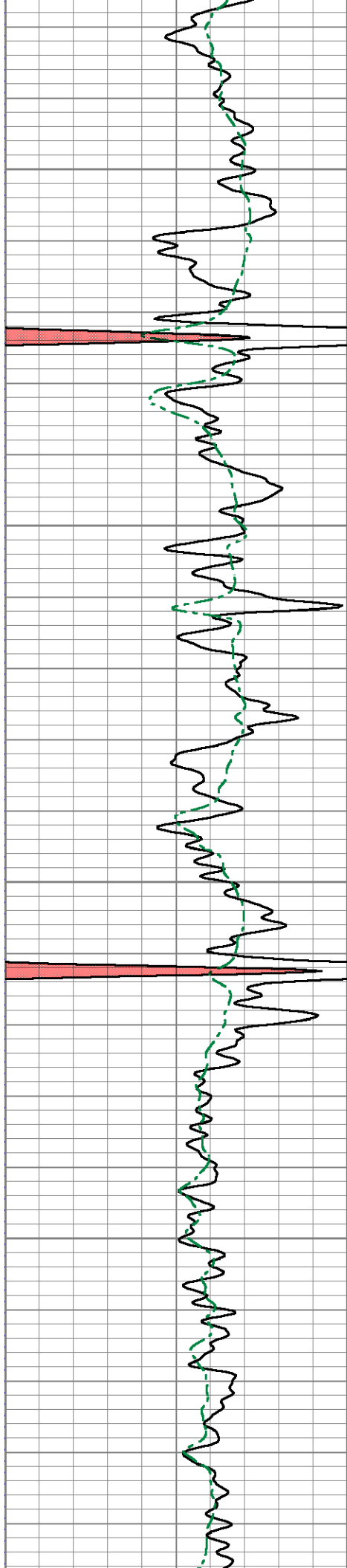
950

1000

1050

1100



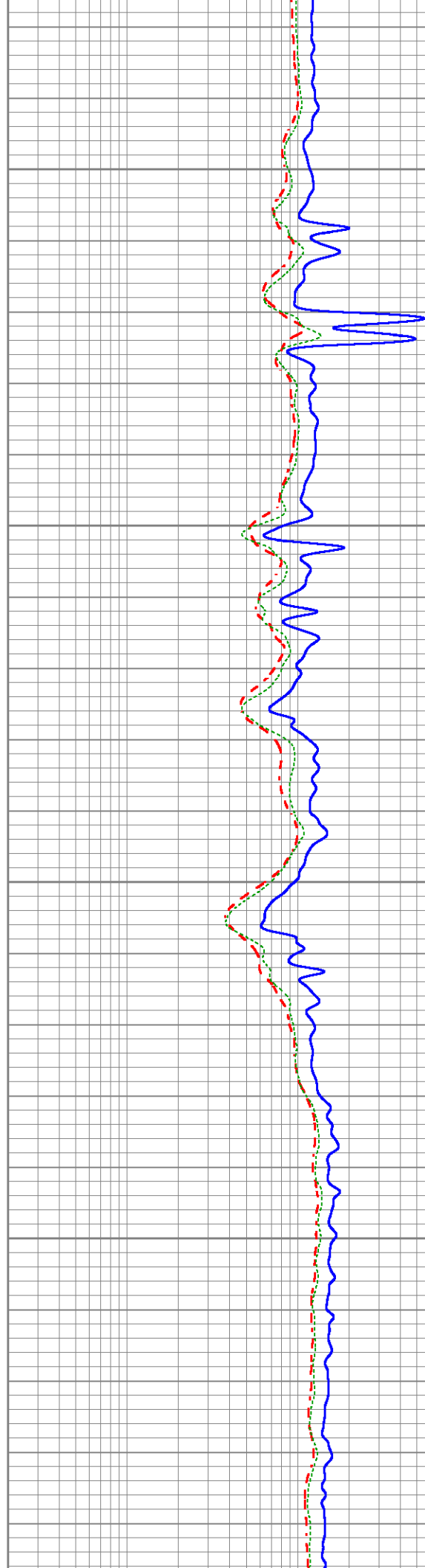


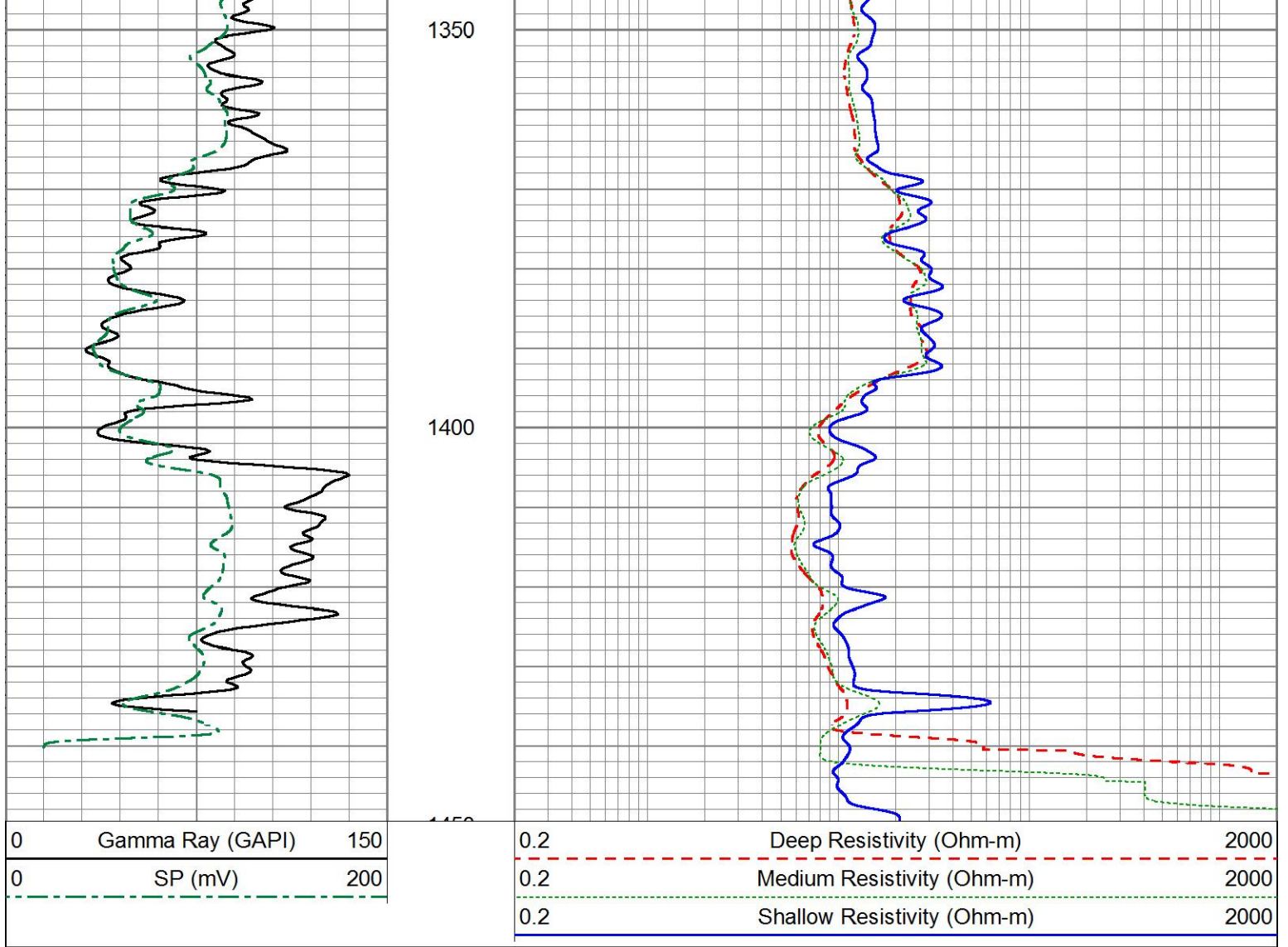
1150


1200

1250

1300





Sensor	Offset (ft)	Schematic	Description	Length (ft)	O.D. (in)	Weight (lb)
			Cable-CableHead Isulation Sub	1.42	3.00	20.00
CILD SP	10.92 10.42		DIL-GEAR (158) Dual Induction Electrical Log	21.36	4.00	395.00
CILM	7.00					

RLL3

1.65



Dataset: ow2-8895 colt energy.db: field/well/DIL/pass1  
Total length: 22.78 ft  
Total weight: 415.00 lb  
O.D.: 4.00 in