



MICRORESISTIVITY LOG

Company CARMEN SCHMITT, INC.
 Well LIPP-HARVEY NO. 1-12
 Field WILDCAT
 County GOVE
 State KANSAS

Company CARMEN SCHMITT, INC.
 Well LIPP-HARVEY NO. 1-12
 Field WILDCAT
 County GOVE State KANSAS

Location: API #: 15-063-22,263-00-00
 330' FSL & 2,450' FEL
 SEC 12 TWP 14S RGE 26W
 Permanent Datum GROUND LEVEL Elevation 2459'
 Log Measured From KELLY BUSHING
 Drilling Measured From KELLY BUSHING
 Other Services
 CNL/CDL
 DIL
 Elevation
 K.B. 2464'
 D.F. N/A
 G.L. 2459'

Date	8/19/2015
Run Number	TWO
Depth Driller	4440'
Depth Logger	4440'
Bottom Logged Interval	4439'
Top Log Interval	3500'
Casing Driller	8.625" @ 216'
Casing Logger	213'
Bit Size	7.875"
Type Fluid in Hole	CHEMICAL
Salinity, ppm CL	2900
Density / Viscosity	9.3 60
pH / Fluid Loss	10.5 7.2
Source of Sample	Flowline
Rm @ Meas. Temp	.84 @ 78
Rmt @ Meas. Temp	.63 @ 78
Rmc @ Meas. Temp	1.13 @ 78
Source of Rmf / Rmc	Charts
Rm @ BHT	.54 @ 120
Operating Rig Time	3 1/2 HOURS
Max Rec. Temp. F	120
Equipment Number	108
Location	Hays
Recorded By	J. LONG
Witnessed By	PAT DEENIHAN

<<< Fold Here >>>

All interpretations are opinions based on inferences from electrical or other measurements and Pioneer Wireline Services, LLC cannot and does not guarantee the accuracy or correctness of any interpretation, and Pioneer Wireline Services, LLC will not be liable or responsible for any loss, costs, damages, or expenses incurred or sustained by anyone resulting from any interpretation made by any of our officers, agents or employees.

Comments

N/A DENOTES NOT AVAILABLE OR NON-APPLICABLE.
 COLLYER EXIT, 13 SOUTH TO U ROAD, 2 1/4 WEST, NORTH INTO

Log Measured From: KELLY BUSHING 5 Ft. Above Permanent Datum

THANK YOU FOR USING PIONEER ENERGY SERVICES
www.pioneerenergy.com 785-625-3858

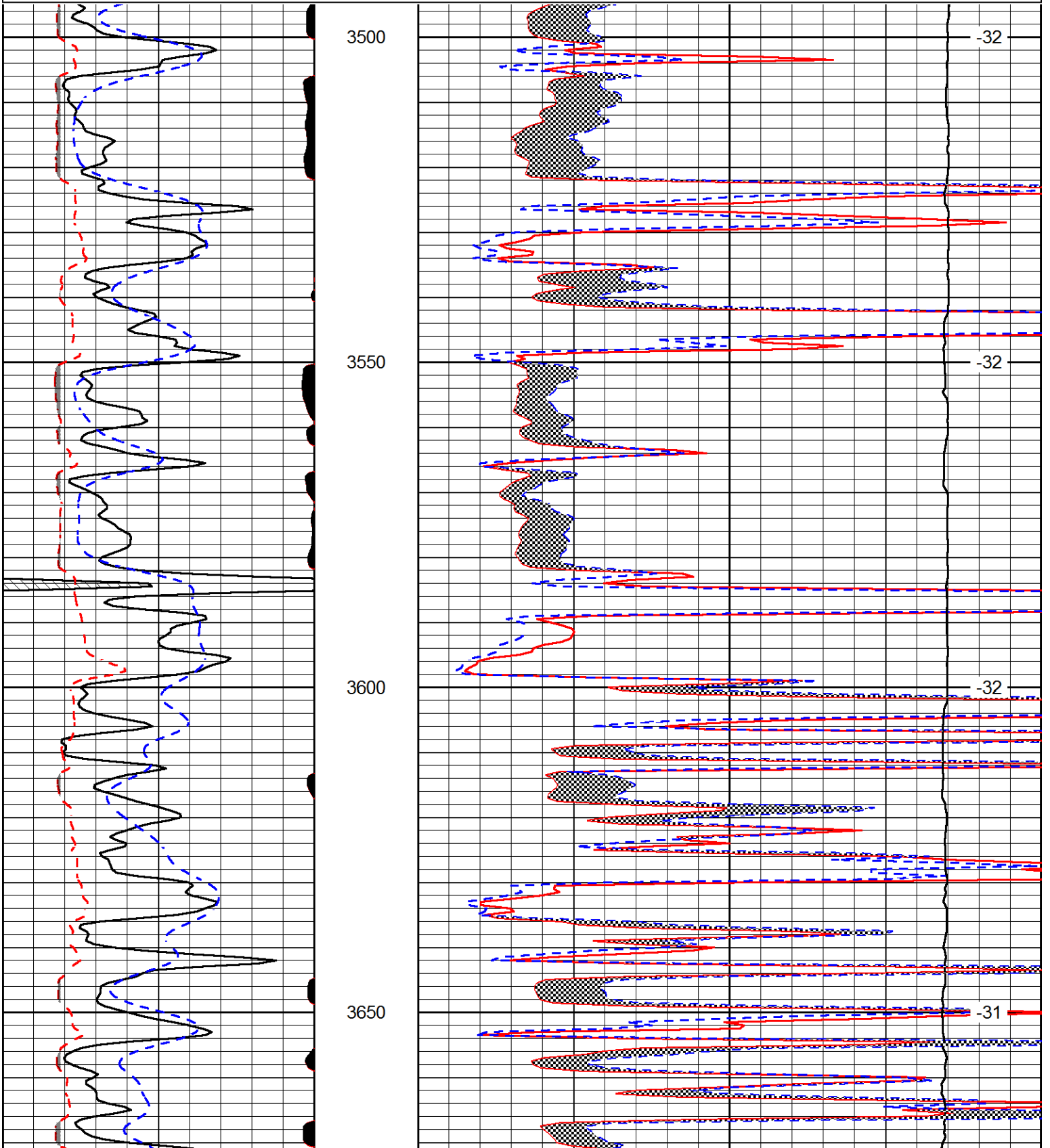
Your Pioneer Energy Services Crew	This Log Record Was Witnessed By
Engineer: J. LONG	Primary Witness: PAT DEENIHAN
Operator:	Secondary Witness:
Operator:	Secondary Witness:
Operator:	Secondary Witness:

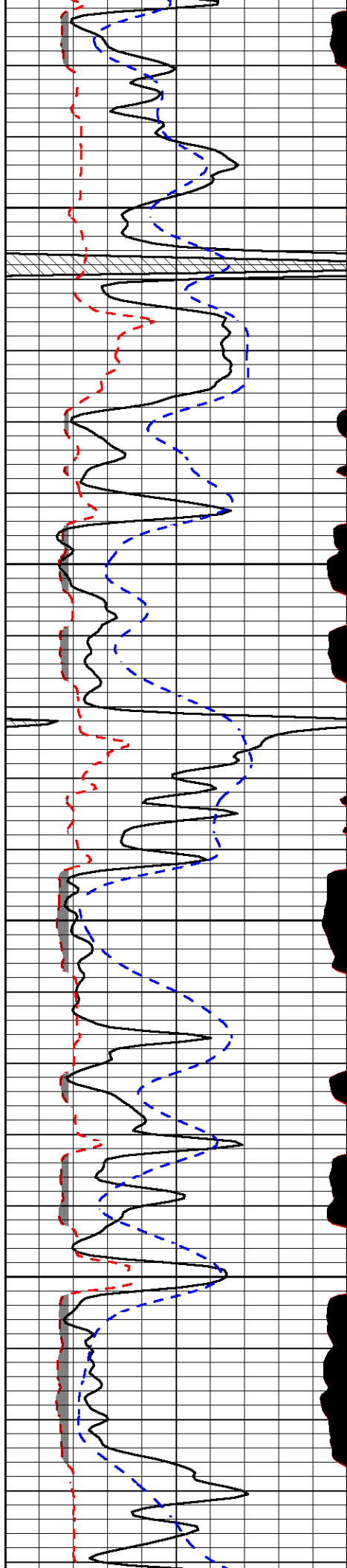
Database File carmenschmitt_lipp-harvey_1-12hd.db
 Dataset Pathname DIL/carmstck
 Presentation Format micro
 Dataset Creation Wed Aug 19 04:13:17 2015
 Charted by Depth in Feet scaled 1:240

0	Gamma Ray (GAPI)	150
6	MCAL (in)	16
2.875	Mud Cake (in)	7.875
-200	SP (mV)	0

0	Micro Inverse 1 X 1 (Ohm-m)	40
0	Micro Normal 2" (Ohm-m)	40
10000	Line Weight (lb)	0

LSPD
(ft/min)



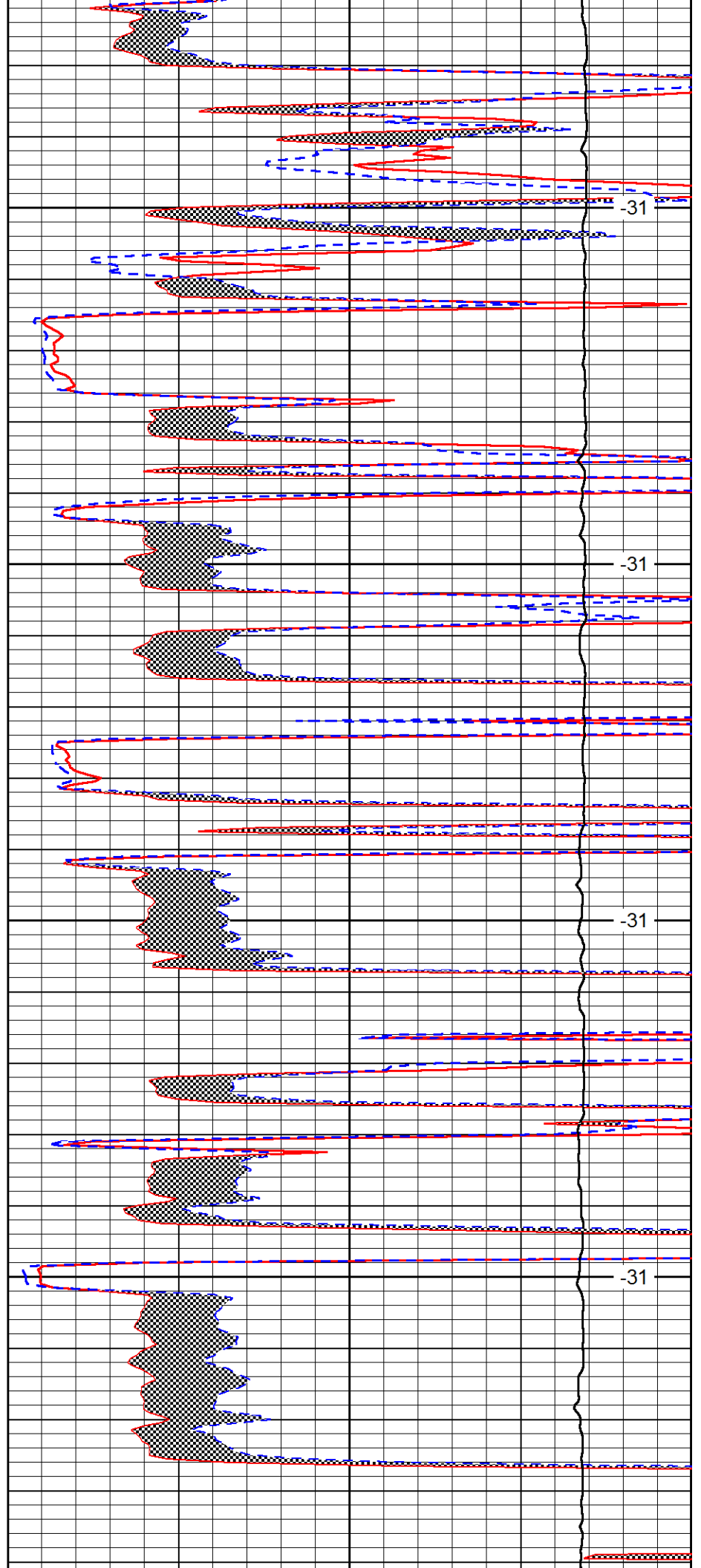


3700

3750

3800

3850

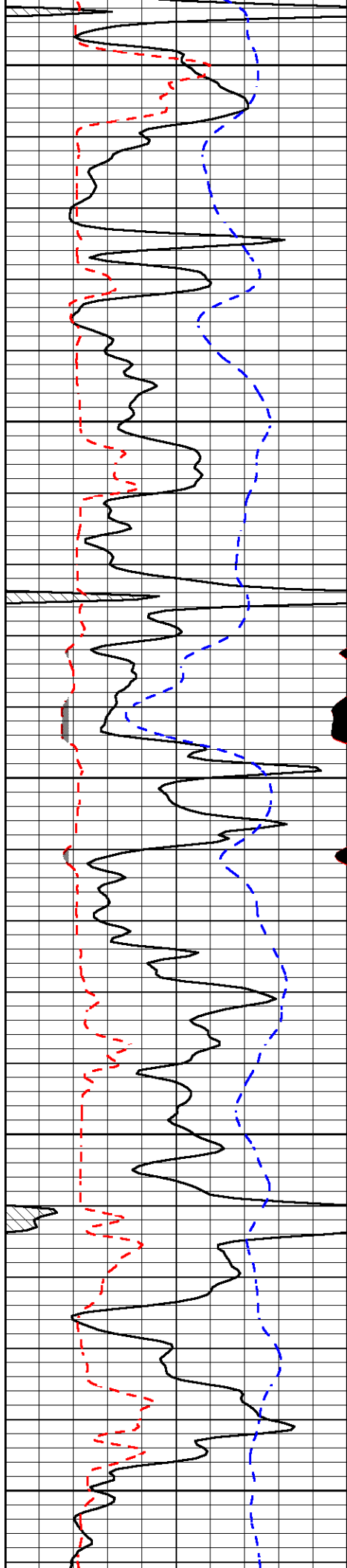


-31

-31

-31

-31



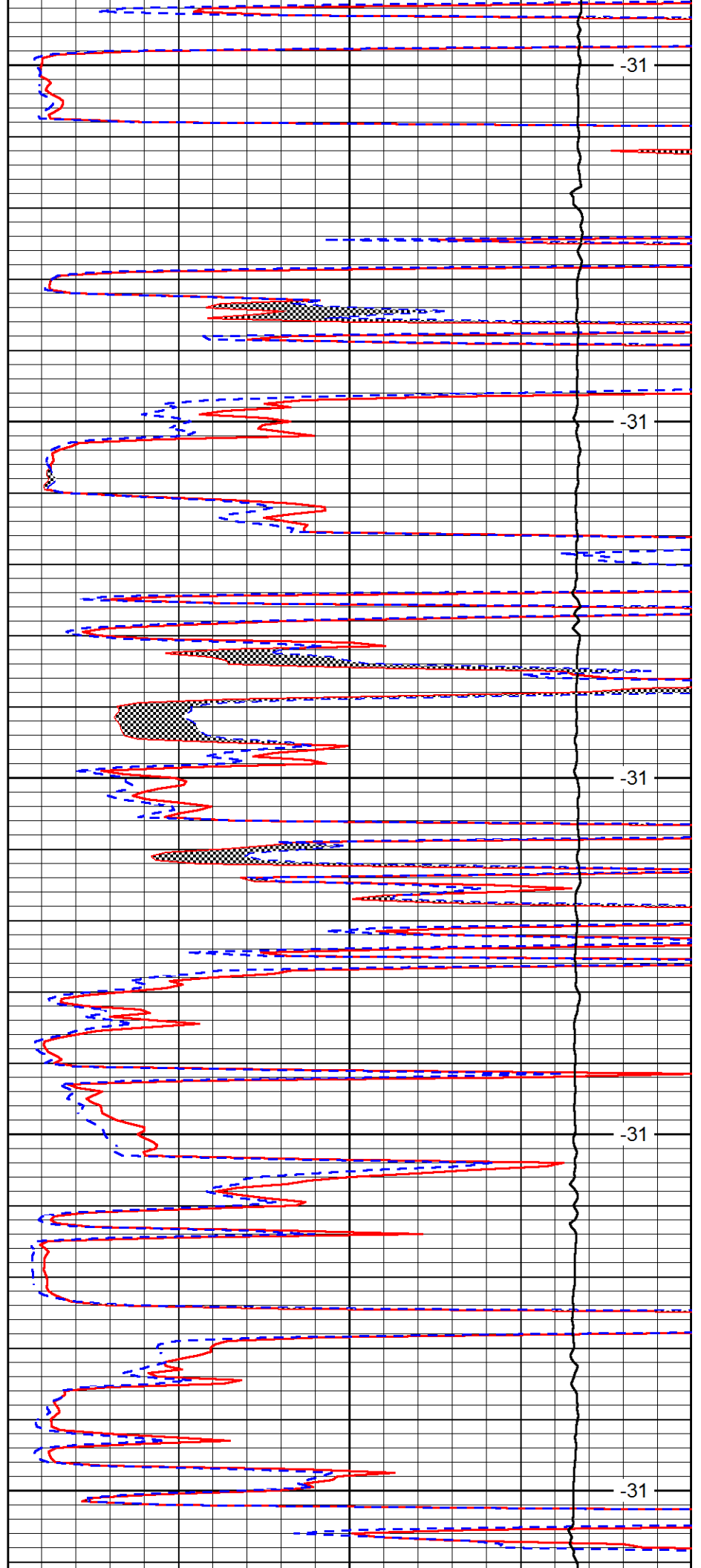
3900

3950

4000

4050

4100



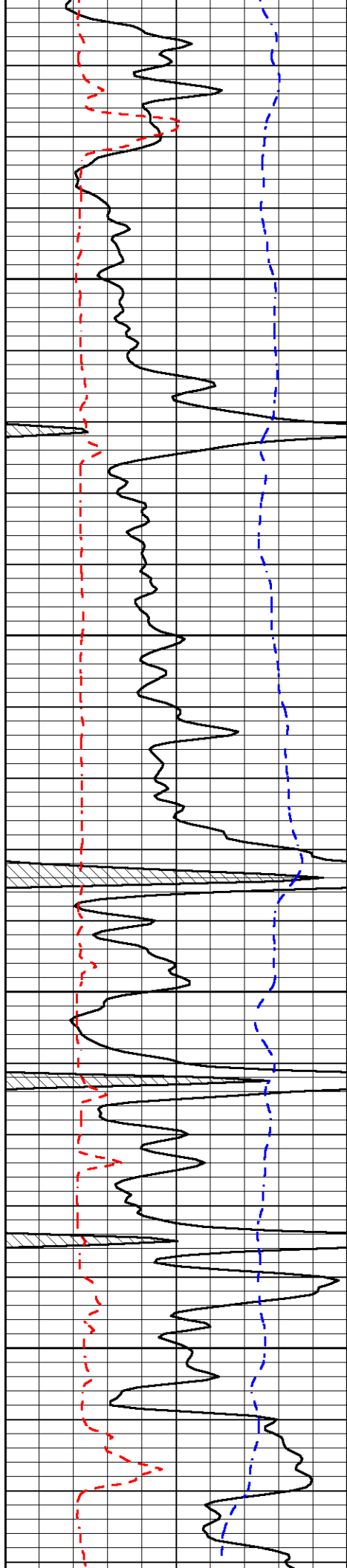
-31

-31

-31

-31

-31

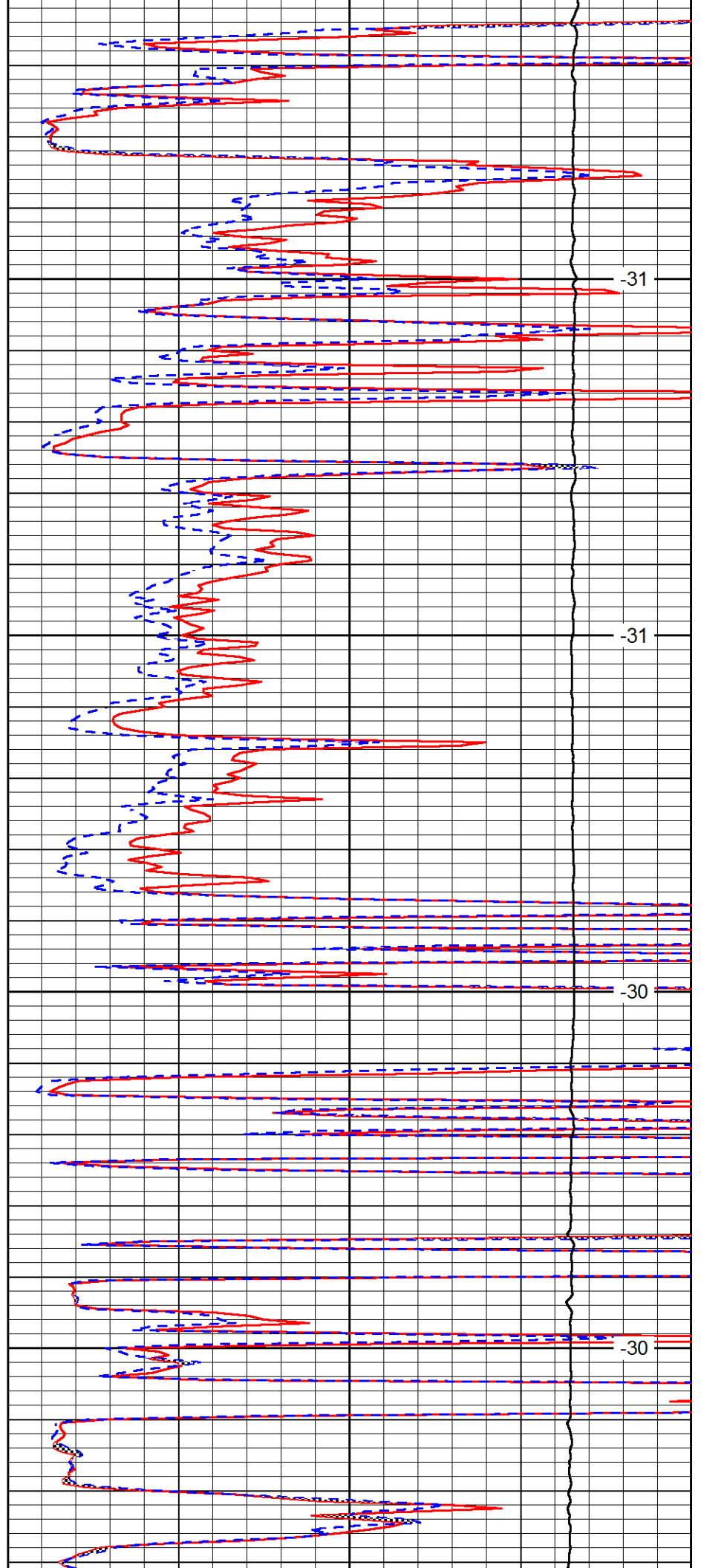


4150

4200

4250

4300

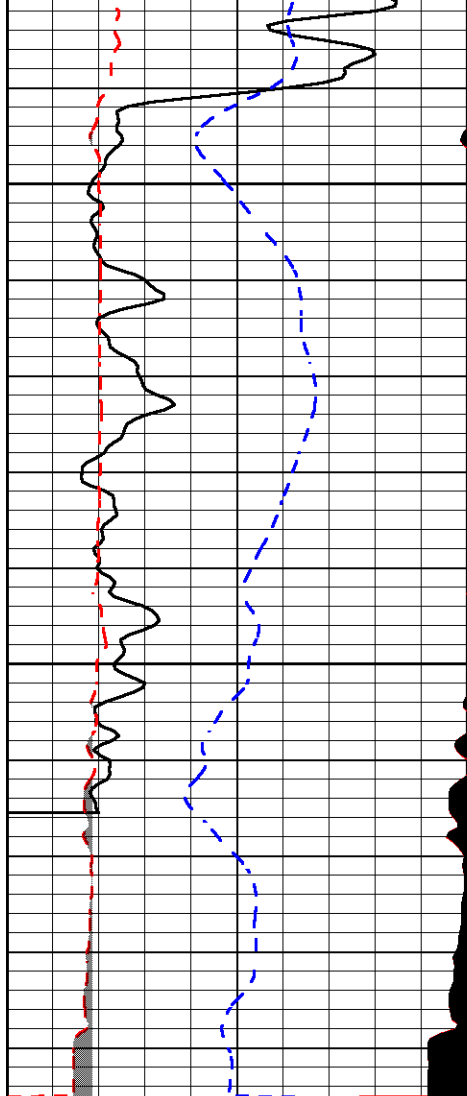


-31

-31

-30

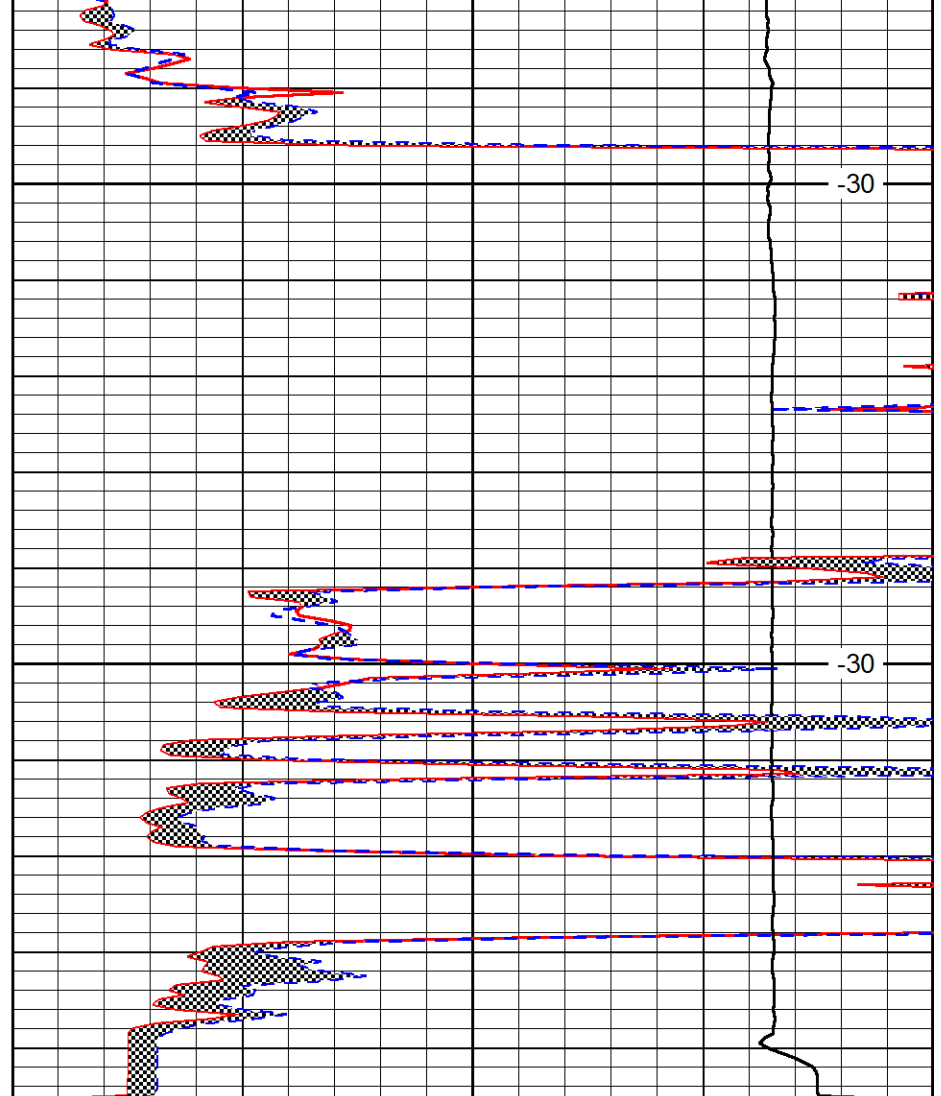
-30



0	Gamma Ray (GAPI)	150
6	MCAL (in)	16
2.875	Mud Cake (in)	7.875
-200	SP (mV)	0

4350

4400



0	Micro Inverse 1 X 1 (Ohm-m)	40
0	Micro Normal 2" (Ohm-m)	40
10000	Line Weight (lb)	0

LSPD
(ft/min)