



# DUAL COMP POROSITY LOG

Company CARMEN SCHMITT, INC.  
 Well LIPP-HARVEY NO. 1-12  
 Field WILDCAT  
 County GOVE  
 State KANSAS

Company CARMEN SCHMITT, INC.  
 Well LIPP-HARVEY NO. 1-12  
 Field WILDCAT  
 County GOVE State KANSAS

Location: API #: 15-063-22,263-00-00  
 330' FSL & 2,450' FEL  
 SEC 12 TWP 14S RGE 26W  
 Permanent Datum GROUND LEVEL Elevation 2459'  
 Log Measured From KELLY BUSHING  
 Drilling Measured From KELLY BUSHING  
 Other Services DIL/MEL  
 K.B. 2464'  
 D.F. N/A  
 G.L. 2459'

Date	8/19/2015
Run Number	ONE
Type Log	CNL/CDL
Depth Driller	4440'
Depth Logger	4440'
Bottom Logged Interval	4419'
Top Logged Interval	3500'
Type Fluid In Hole	CHEMICAL
Salinity, PPM CL	2900
Density	9.3
Level	FULL
Max. Rec. Temp. F	120
Operating Rig Time	3 1/2 HOURS
Equipment -- Location	108 Hays
Recorded By	J. LONG
Witnessed By	PAT DEENIHAN

Borehole Record		Casing Record					
Run No.	Bit	From	To	Size	Wgt.	From	To
ONE	12.25	00	216	8.625	23#	00	216
TWO	7.875	216	TD				

<<< Fold Here >>>

All interpretations are opinions based on inferences from electrical or other measurements and Pioneer Wireline Services, LLC cannot and does not guarantee the accuracy or correctness of any interpretation, and Pioneer Wireline Services, LLC will not be liable or responsible for any loss, costs, damages, or expenses incurred or sustained by anyone resulting from any interpretation made by any of our officers, agents or employees.

Comments

N/A DENOTES NOT AVAILABLE OR NON-APPLICABLE.  
 COLLYER EXIT, 13 SOUTH TO U ROAD, 2 1/4 WEST, NORTH INTO

Log Measured From: KELLY BUSHING 5 Ft. Above Permanent Datum

THANK YOU FOR USING PIONEER ENERGY SERVICES  
[www.pioneerenergy.com](http://www.pioneerenergy.com) 785-625-3858

Your Pioneer Energy Services Crew

Engineer: J. LONG  
 Operator:  
 Operator:  
 Operator:

This Log Record Was Witnessed By

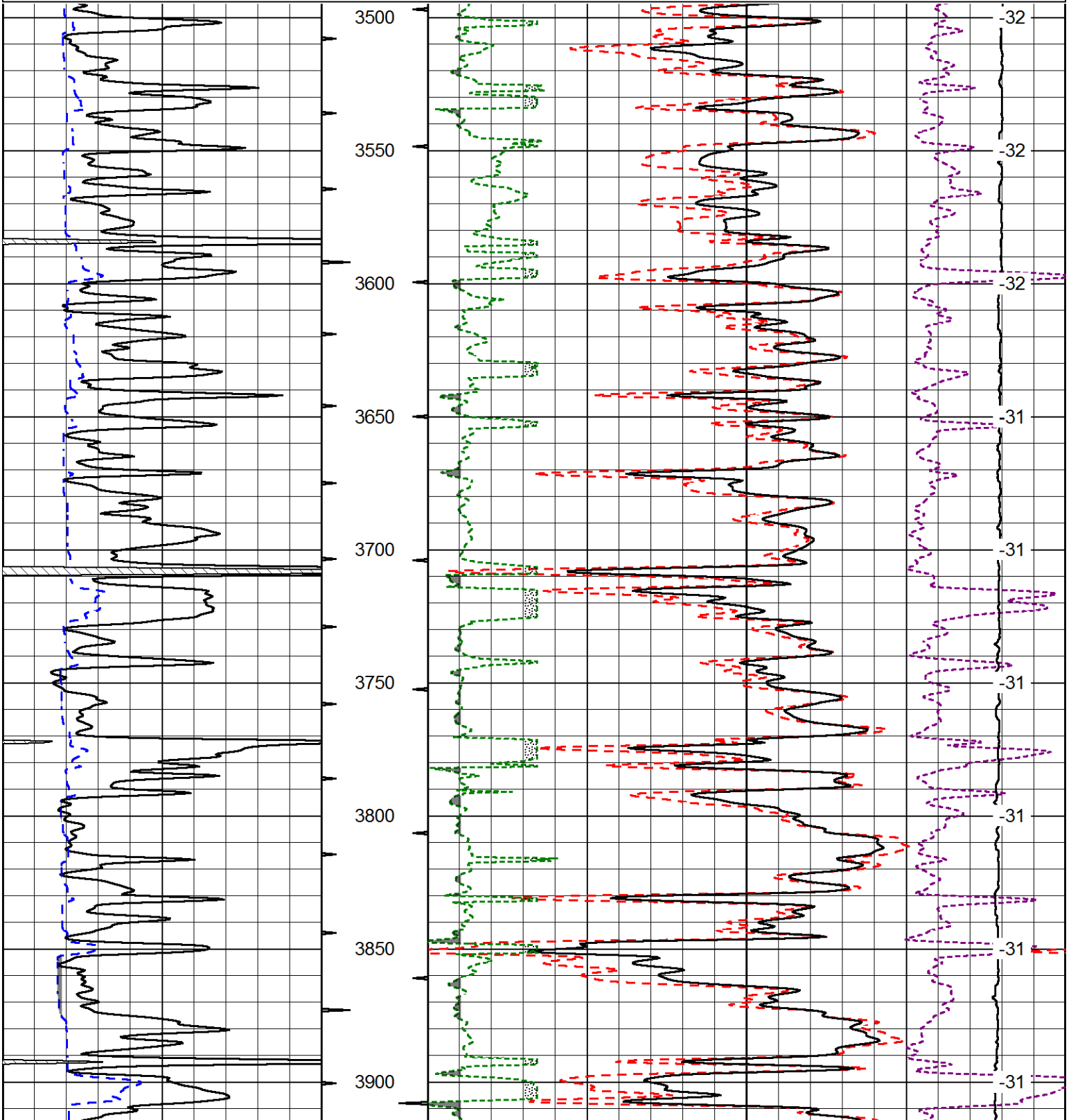
Primary Witness: PAT DEENIHAN  
 Secondary Witness:  
 Secondary Witness:  
 Secondary Witness:

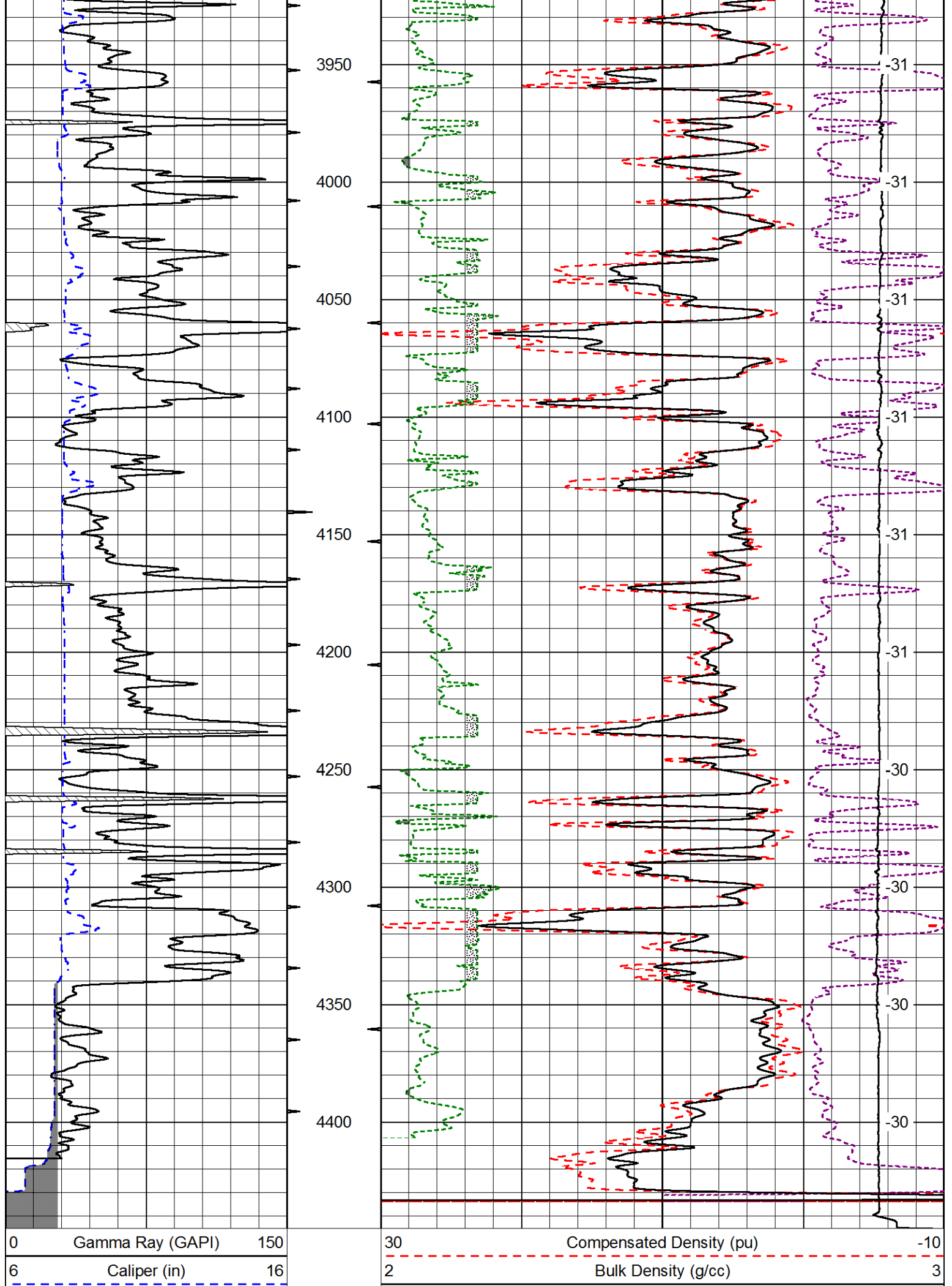
Database File carmenschmitt\_lipp-harvey\_1-12hd.db  
 Dataset Pathname DIL/carmstck  
 Presentation Format cdl  
 Dataset Creation Wed Aug 19 04:13:17 2015  
 Charted by Depth in Feet scaled 1:600

0	Gamma Ray (GAPI)	150
6	Caliper (in)	16

30	Compensated Density (pu)		-10
2	Bulk Density (g/cc)		3
15000	Line Tension (lb)		0
2.625	DGA (g/cc)	3.425	-0.25
	Correction (g/cc)		0.25

LSPD  
(ft/min)

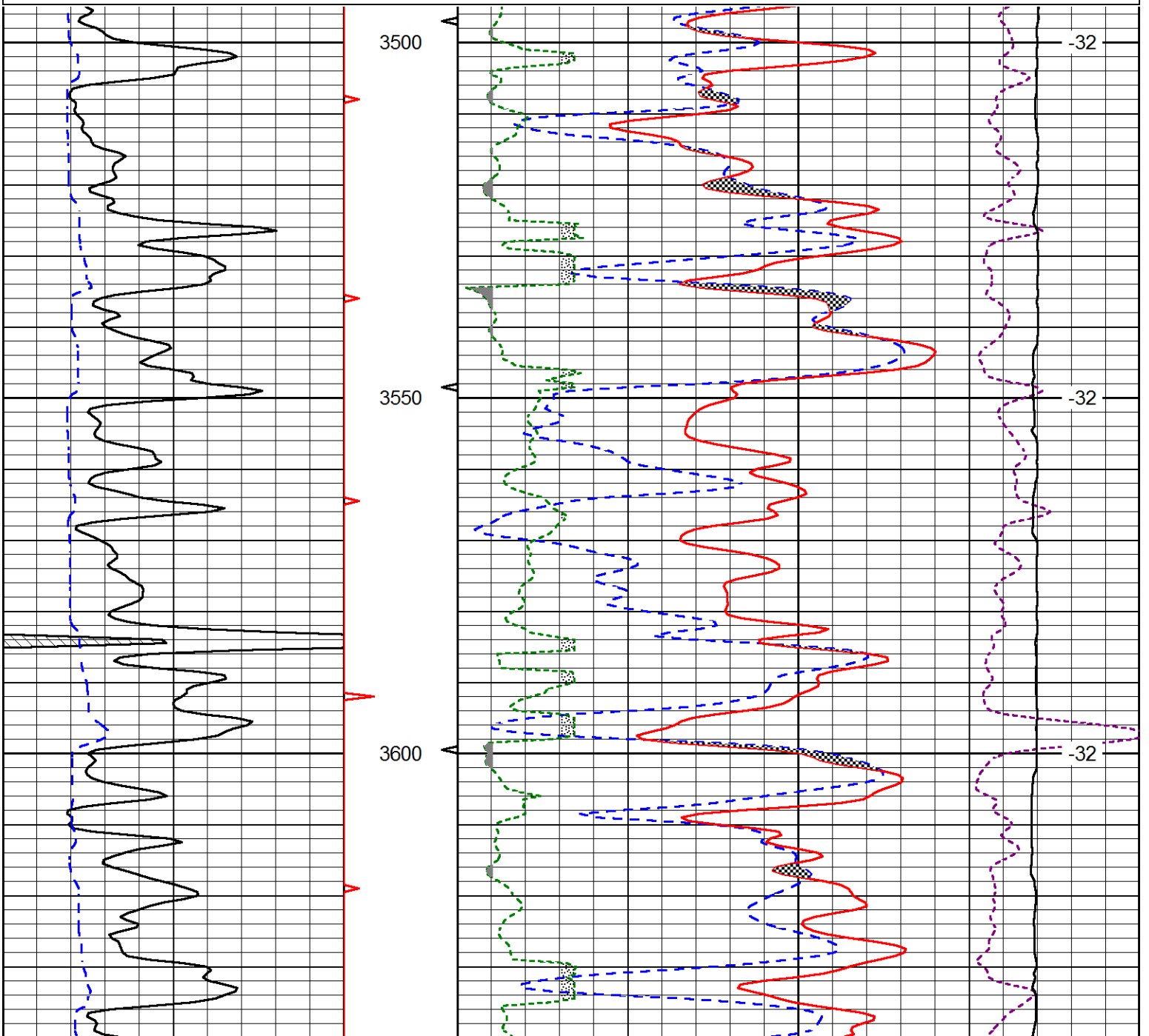


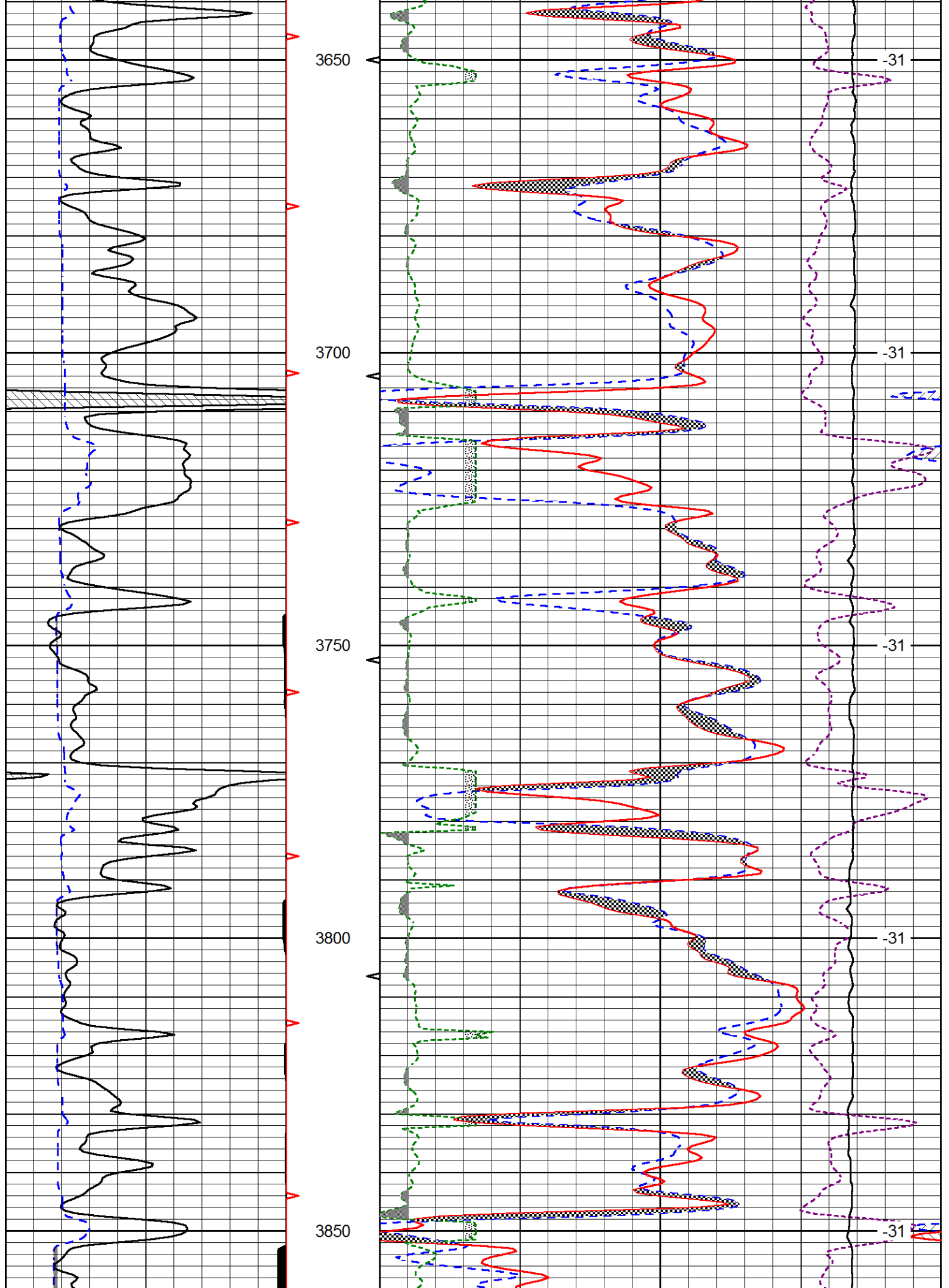


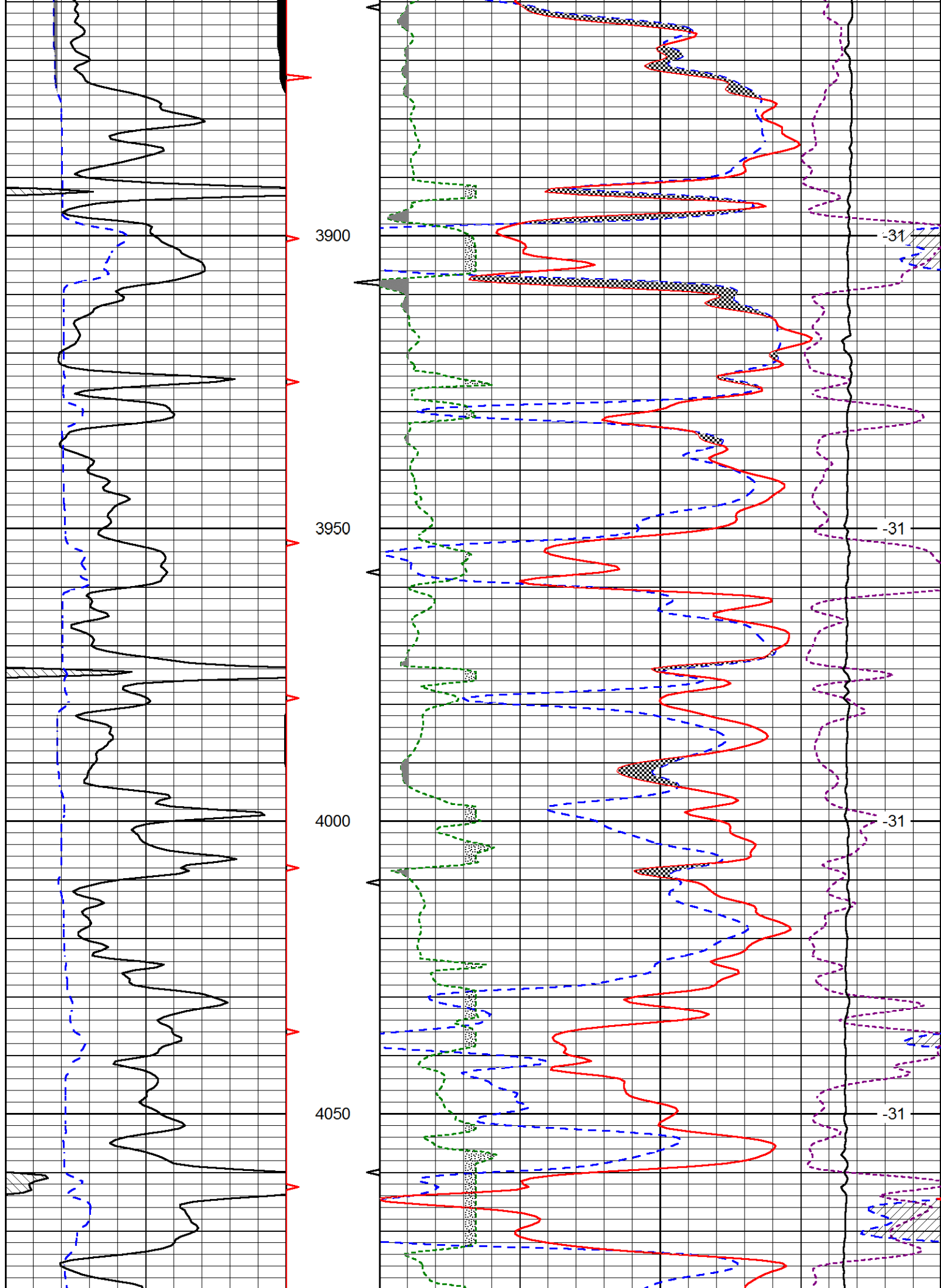
15000	Line Tension (lb)			0	
2.625	DGA (g/cc)	3.425	-0.25	Correction (g/cc)	0.25
				LSPD (ft/min)	

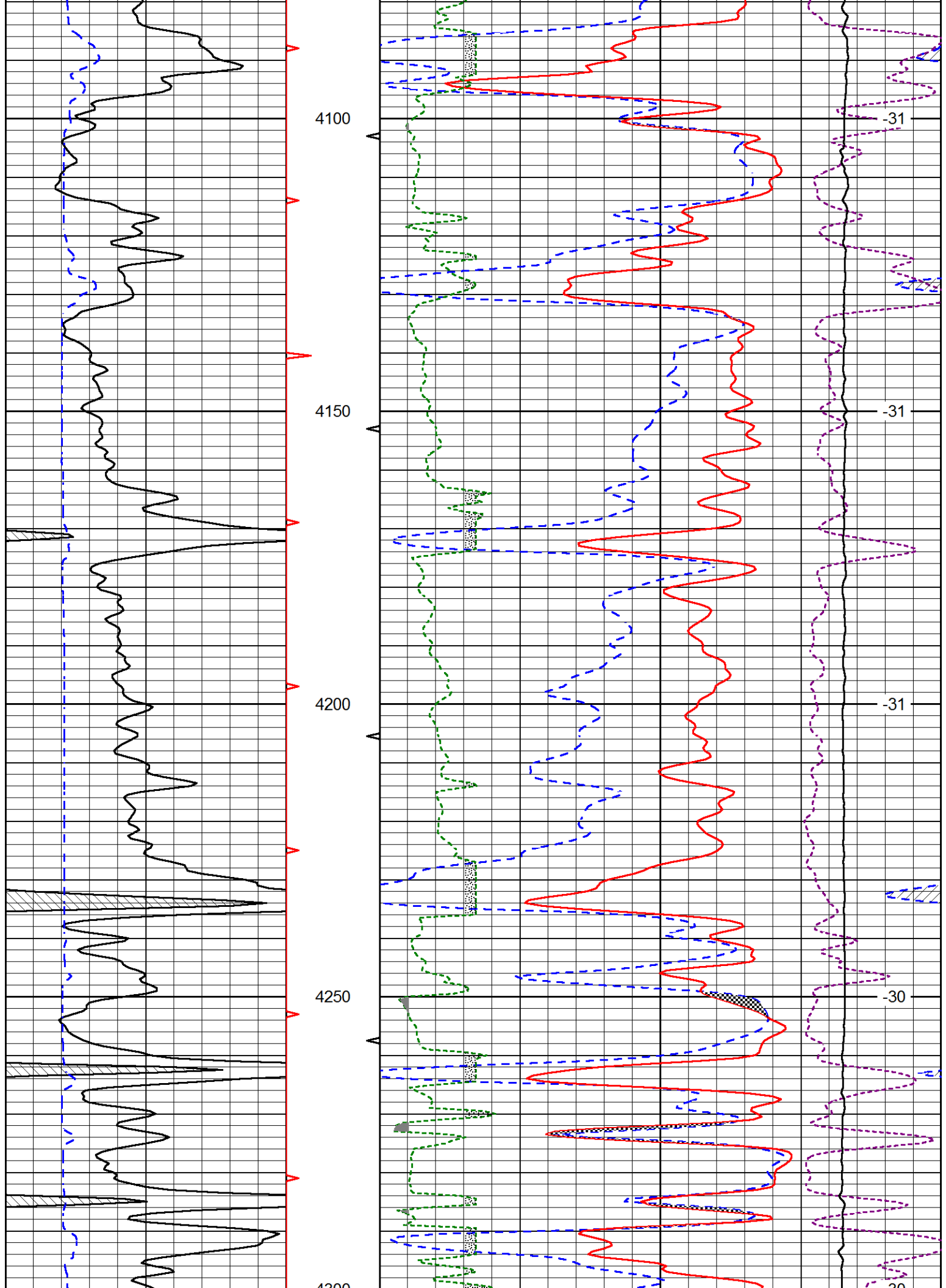
Database File: carmenschmitt\_lipp-harvey\_1-12hd.db  
 Dataset Pathname: DIL/carmstck  
 Presentation Format: cndlspec  
 Dataset Creation: Wed Aug 19 04:13:17 2015  
 Charted by: Depth in Feet scaled 1:240

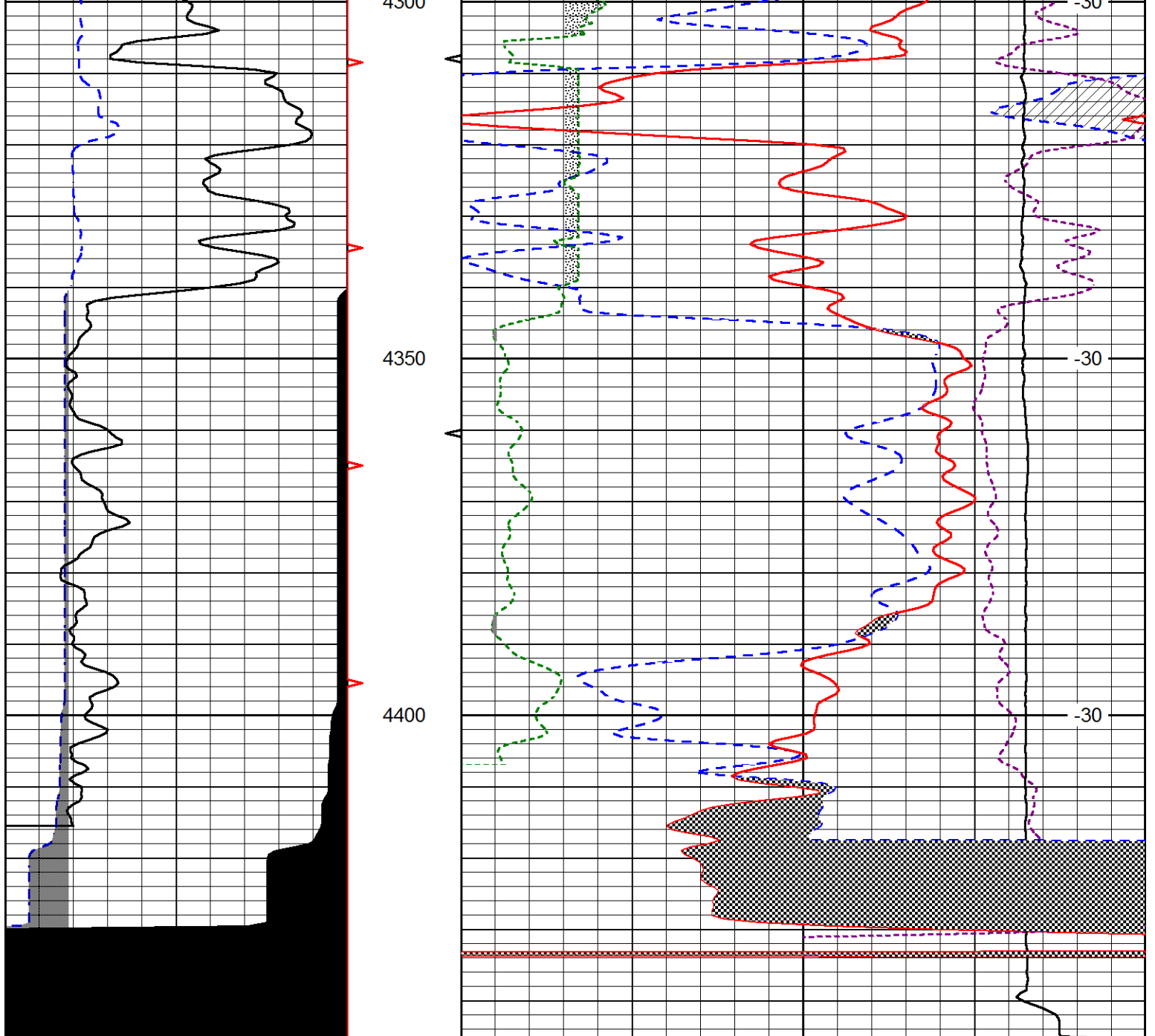
0	Gamma Ray (GAPI)	150	30	CNLS (pu)		-10
6	Caliper (in)	16	30	Compensated Density (2.71 ma) (pu)		-10
			10000	Line Tension (lb)		0
2.625	DGA (g/cc)	3.425	-0.25	Correction (g/cc)	0.25	LSPD (ft/min)











0	Gamma Ray (GAPI)	150
6	Caliper (in)	16

30	CNLS (pu)	-10
30	Compensated Density (2.71 ma) (pu)	-10
10000	Line Tension (lb)	0
2.625	DGA (g/cc)	3.425 -0.25
	Correction (g/cc)	0.25

LSPD  
(ft/min)