



DUAL COMP POROSITY LOG

Company: RESSLER WELL SERVICE, INC.
 Well: SCHMIDT FRIESEN NO. 30-1
 Field: HOLLOW-NIKKEL
 County: HARVEY
 State: KANSAS

Company: RESSLER WELL SERVICE, INC.
 Well: SCHMIDT FRIESEN NO. 30-1
 Field: HOLLOW-NIKKEL
 County: HARVEY
 State: KANSAS

Location: 330' FNL & 1980' FEL
 SEC 30 TWP 22S RGE 3W
 Permanent Datum: GROUND LEVEL Elevation 1448'
 Log Measured From: KELLY BUSHING
 Drilling Measured From: KELLY BUSHING
 Other Services: DIL
 Elevation: K.B. 1454', D.F. N/A, G.L. 1448'

Date	11/29/2017						
Run Number	ONE						
Type Log	CNL/CDL						
Depth Driller	2616'						
Depth Logger	2610'						
Bottom Logged Interval	2589'						
Top Logged Interval	2200'						
Type Fluid In Hole	CHEMICAL						
Salinity, PPM CL	700						
Density	8.7						
Level	FULL						
Max. Rec. Temp. F	102 DEG/F						
Operating Rig Time	1 1/2 HOURS						
Equipment -- Location	108 HAYS						
Recorded By	J. HENRICKSON						
Witnessed By	LARRY RESSLER						
Borehole Record							
Run No.	Bit	From	To	Size	Wgt.	From	To
ONE	N/A	0	300'	13.375"	N/A	0	300'
TWO	7.875"	300'	TD				
Casing Record							

<<< Fold Here >>>

All interpretations are opinions based on inferences from electrical or other measurements and Pioneer Wireline Services, LLC cannot and does not guarantee the accuracy or correctness of any interpretation, and Pioneer Wireline Services, LLC will not be liable or responsible for any loss, costs, damages, or expenses incurred or sustained by anyone resulting from any interpretation made by any of our officers, agents or employees.

Comments

N/A DENOTES NOT AVAILABLE OR NON-APPLICABLE.

BURRTON KANSAS
 NORTH TO CR 60, 1 1/2 WEST, SOUTH INTO

Log Measured From: KELLY BUSHING 6 Ft. Above Permanent Datum

THANK YOU FOR USING PIONEER ENERGY SERVICES
www.pioneerenergy.com 785-625-3858


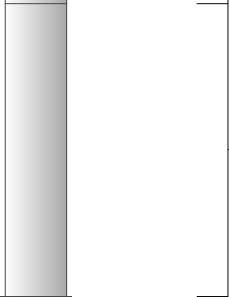
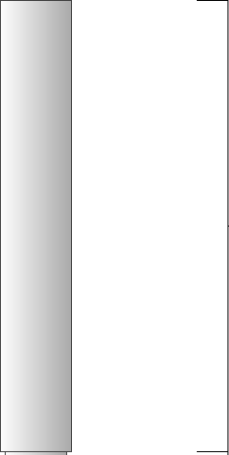

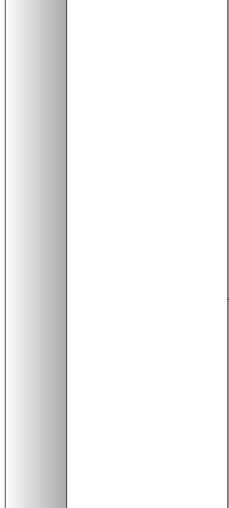
Your Pioneer Energy Services Crew	This Log Record Was Witnessed By
Engineer: J. HENRICKSON	Primary Witness: LARRY RESSLER
Operator:	Secondary Witness: TERRY MCLEOD
Operator:	Secondary Witness:
Operator:	Secondary Witness:

Log Variables

DatabaseC:\ProgramData\Warrior\Data\ressler_schmidt_friesen_30_1.db
 Dataset field/well/stack/pass3.1/_vars_

Top - Bottom

A	BOREID in	BOTTEMP degF	CASEOD in	CASETHCK in	FLUIDDEN g/cc	M	MATRXDEN g/cc
1	7.875	104	5.5	0	1	2	2.71
NPORSEL	PERFS	SNDERR mmho/m	SNDERRM mmho/m	SPSHIFT mV	SRFTEMP degF	SZCOR	TDEPTH ft
Limestone	0	0	0	-200	0	Off	2610

Sensor	Offset (ft)	Schematic	Description	Length (ft)	O.D. (in)	Weight (lb)
GR	33.00		GR-M&W (89-M&W)	3.00	3.50	50.00
CNLSC CNSSC	29.90 29.15		CNT-M&W (tk10-MW)	5.50	3.50	100.00
LSD DCAL SSD	20.85 20.83 20.35		CDL-M&W (168-986)	8.50	4.00	250.00
RLL3 RLL3F	15.80 15.79					
CILD	8.00		DIL-M&W (1987)	18.50	3.50	220.00

CILM 4.70

SP 0.20

Dataset: resslor_schmidt_friesen_30_1.db: field/well/stack/pass3.1
 Total length: 35.50 ft
 Total weight: 620.00 lb
 O.D.: 4.00 in

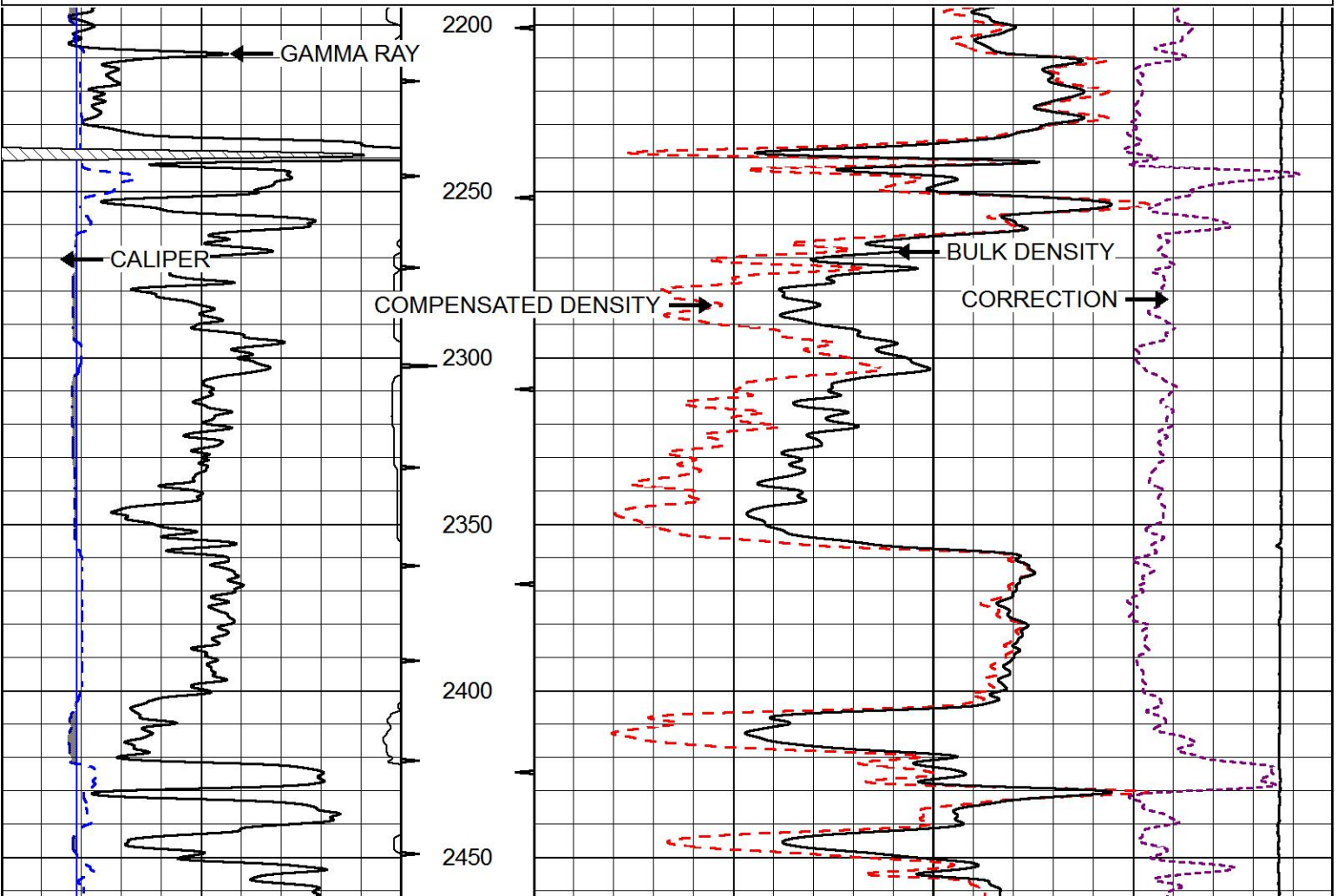


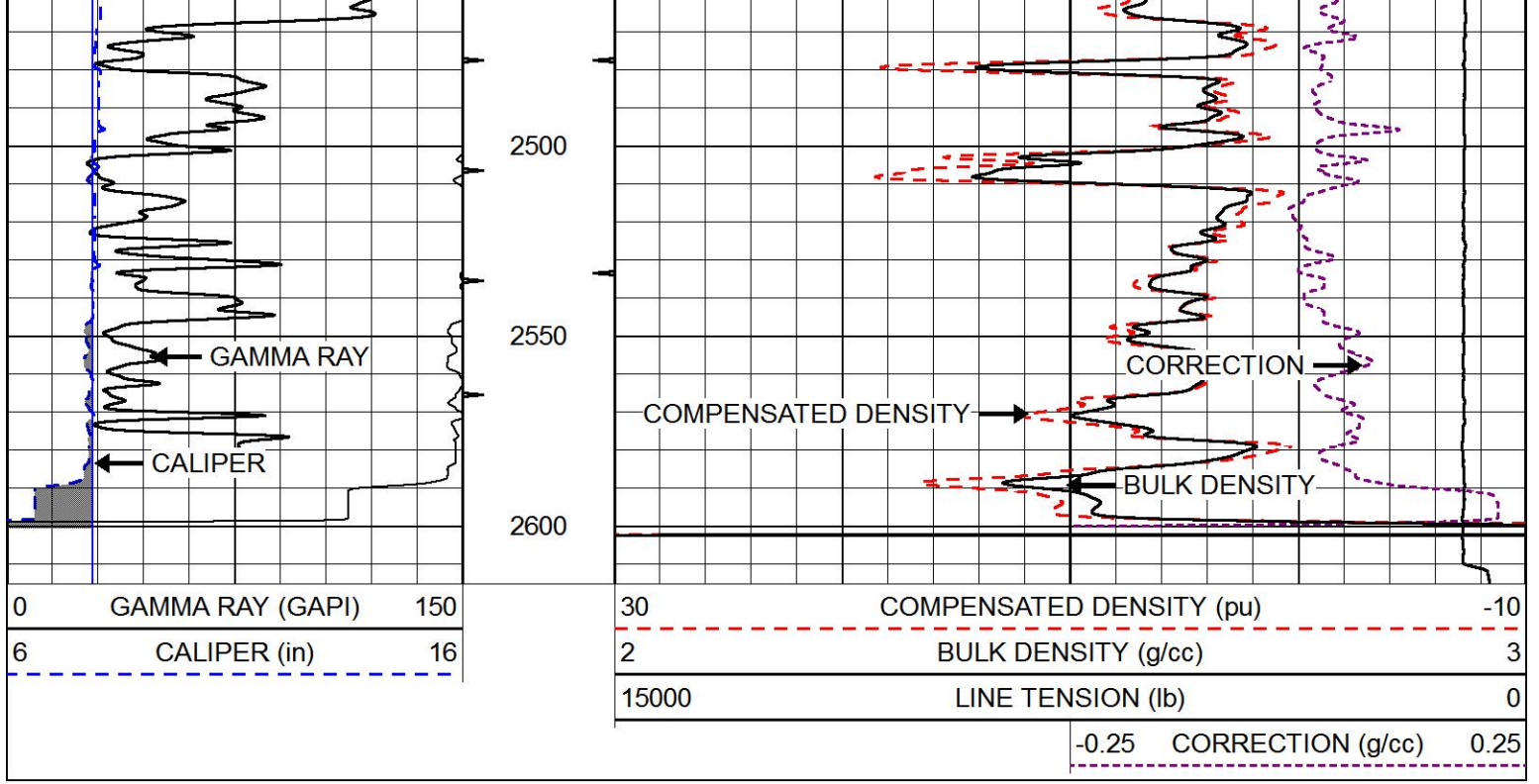
MAIN PASS

Database File resslor_schmidt_friesen_30_1.db
 Dataset Pathname stack/pass3.1
 Presentation Format cdl
 Dataset Creation Wed Nov 29 07:17:50 2017
 Charted by Depth in Feet scaled 1:600

0	GAMMA RAY (GAPI)	150
6	CALIPER (in)	16

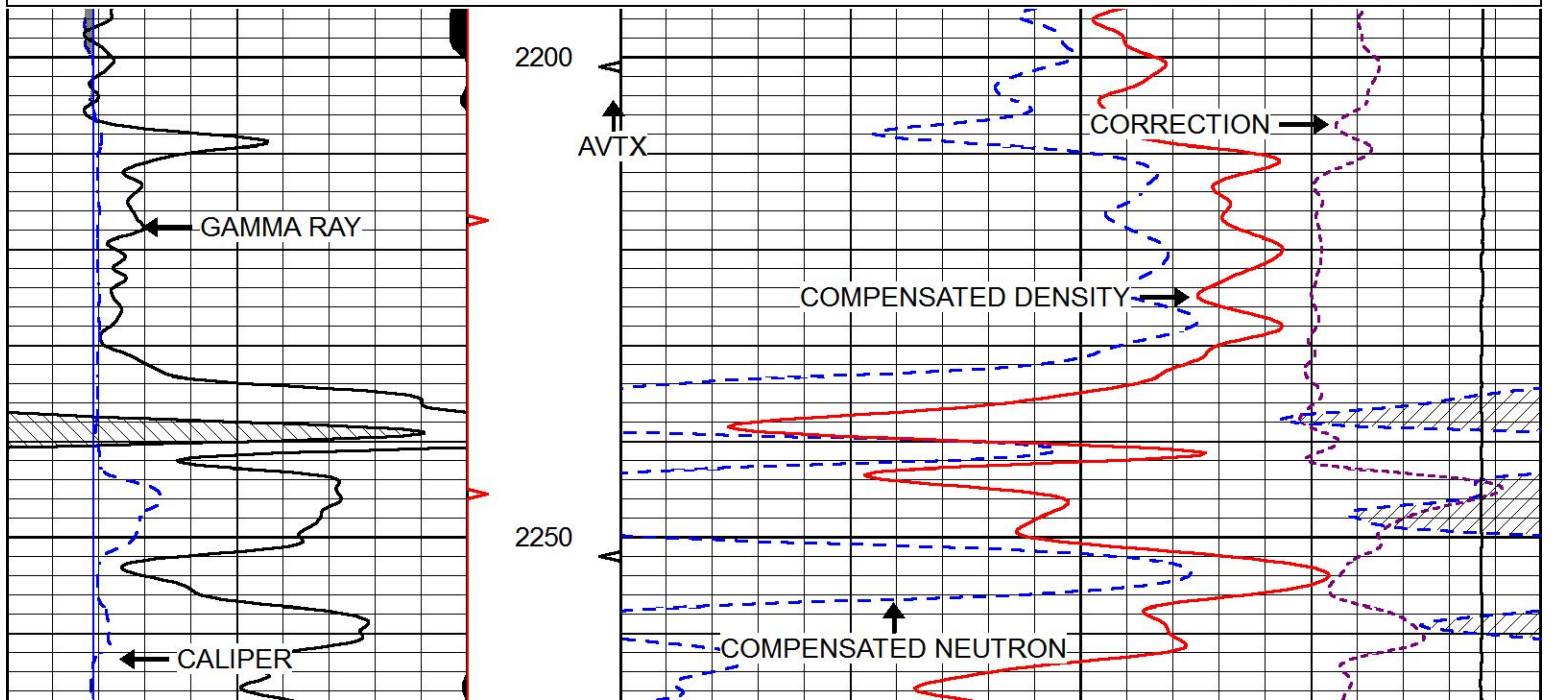
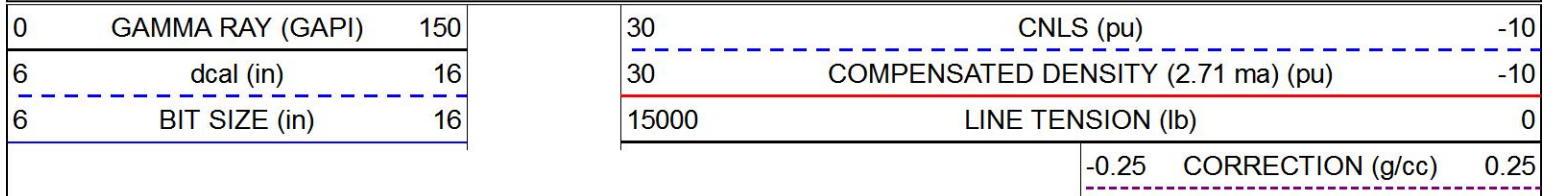
30	COMPENSATED DENSITY (pu)	-10
2	BULK DENSITY (g/cc)	3
15000	LINE TENSION (lb)	0
-0.25	CORRECTION (g/cc)	0.25

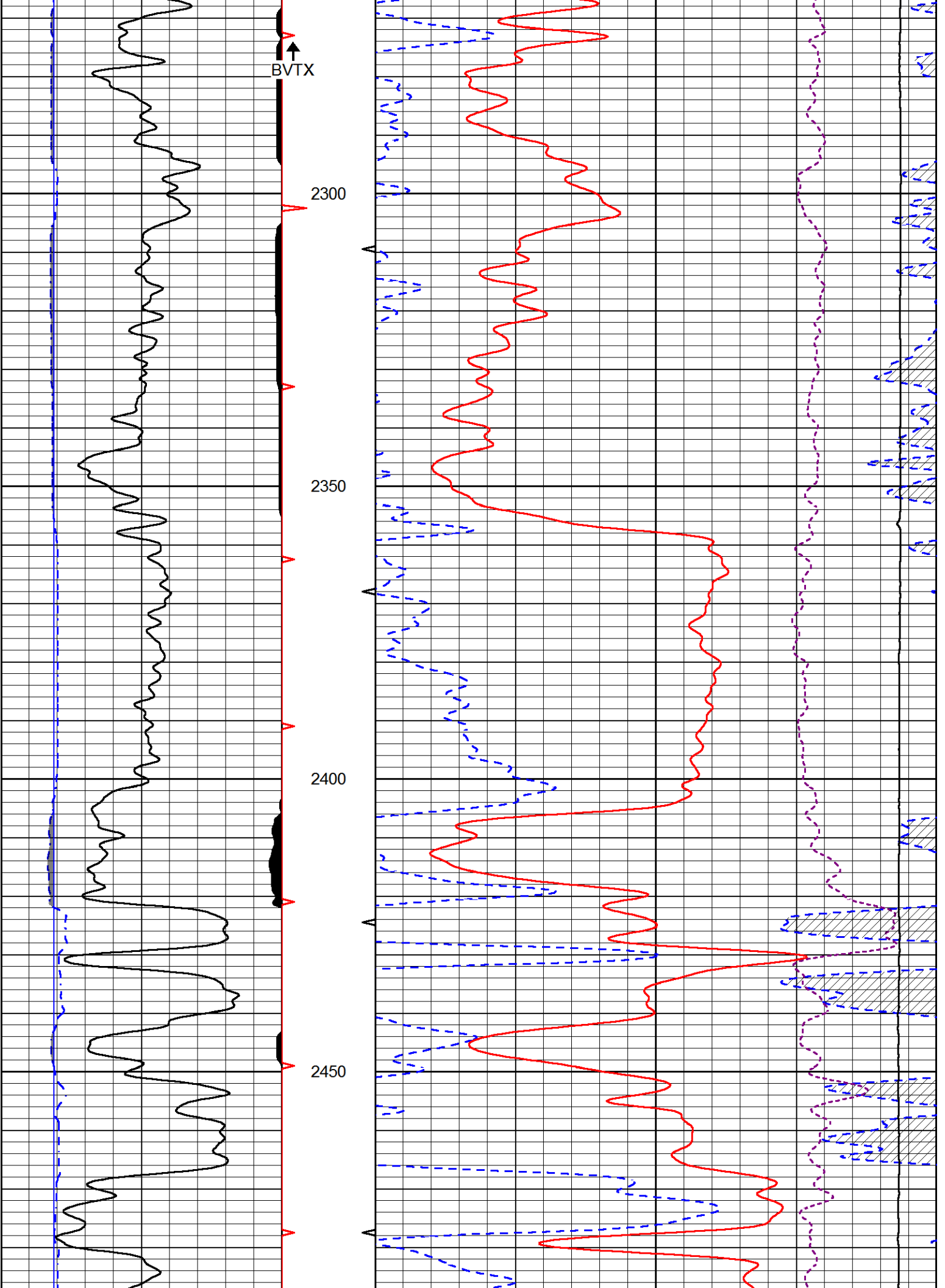


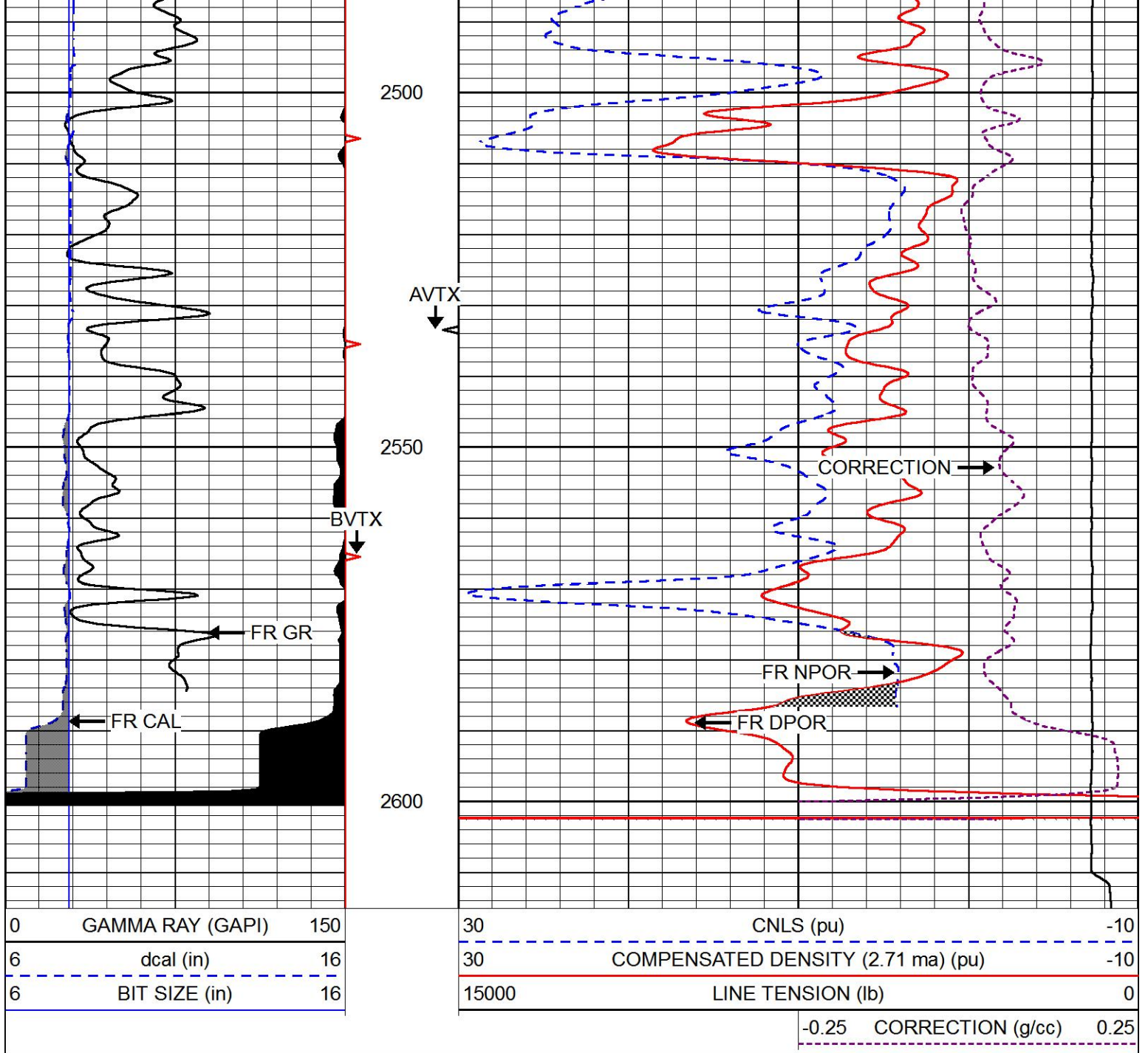


MAIN PASS

Database File: resler_schmidt_friesen_30_1.db
 Dataset Pathname: stack/pass3.1
 Presentation Format: cndlspec
 Dataset Creation: Wed Nov 29 07:17:50 2017
 Charted by: Depth in Feet scaled 1:240

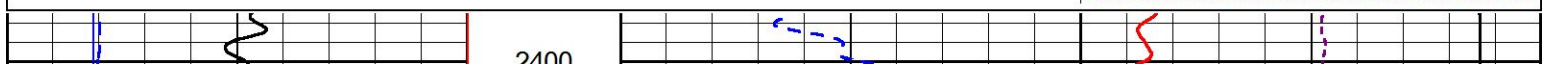
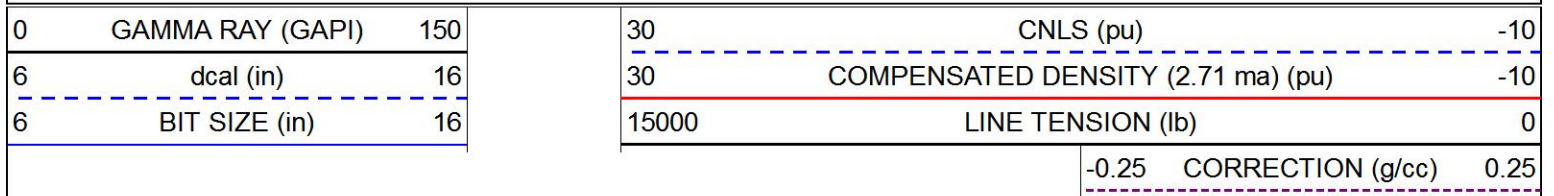






REPEAT SECTION

Database File: resler_schmidt_friesen_30_1.db
 Dataset Pathname: stack/pass2.1
 Presentation Format: cndlspec
 Dataset Creation: Wed Nov 29 07:18:00 2017
 Charted by: Depth in Feet scaled 1:240



Background Reading:

0.0

cps

Calibrator Reading:

6.2

cps

Sensitivity:

0.5200

GAPI/cps



PIONEER

Pioneer Energy Services

Company RESSLER WELL SERVICE, INC.

Well SCHMIDT FRIESEN NO. 30-1

Field HOLLOW-NIKKEL

County HARVEY

State KANSAS