



Casedhole Solutions

MICRO LOG

Company	RAYMOND OIL COMPANY, INC.	Company	RAYMOND OIL COMPANY, INC.
Well	MEYERS #1	Well	MEYERS #1
Field	WILD CAT	Field	WILD CAT
County	LOGAN	County	LOGAN
State	KANSAS	State	KANSAS
Location:	3351 FSL & 955' FWL	API # : 15-109-21446-0000	Other Services CDL/CNL DIL
Permanent Datum	GROUND LEVEL	Elevation	2717
Log Measured From	KELLY BUSHING 5' A.G.L.	K.B.	2722
Drilling Measured From	KELLY BUSHING	D.F.	2720
		G.L.	2717

Date	12/18/15
Run Number	TWO
Depth Driller	4623
Depth Logger	4625
Bottom Logged Interval	4623
Top Log Interval	3250
Casing Driller	8 5/8" @ 260
Casing Logger	258
Bit Size	7 7/8"
Type Fluid in Hole	CHEMICAL MUD
Density / Viscosity	9.3/57
pH / Fluid Loss	10.0/10.2
Source of Sample	FLOWLINE
Rm @ Meas. Temp	.50 @ 60F
Rmt @ Meas. Temp	.37 @ 60F
Rmc @ Meas. Temp	.60 @ 60F
Source of Rmf / Rmc	MEASUREMENT
Rm @ BHT	.24 @ 122F
Time Circulation Stopped	2 HOURS
Time Logger on Bottom	
Maximum Recorded Temperature	122F
Equipment Number	4010
Location	HAYS, KANSAS
Recorded By	JASON CAPPELLUCCI
Witnessed By	MAX LOVELLY

<<< Fold Here >>>

All interpretations are opinions based on inferences from electrical or other measurements and we cannot and do not guarantee the accuracy or correctness of any interpretation, and we shall not, except in the case of gross or willful negligence on our part, be liable or responsible for any loss, costs, damages, or expenses incurred or sustained by anyone resulting from any interpretation made by any of our officers, agents or employees. These interpretations are also subject to our general terms and conditions set out in our current Price Schedule.

Comments

THANK YOU FOR USING CASEDHOLE SOLUTIONS, HAYS, KS. (785) 628-6395
 DIRECTIONS:
 OAKLEY, KS. - 22 SOUTH TO GOLD RD. - 4 1/2 WEST TO THE T - NORTH
 TO JOG WEST - WEST TO JOG NORTH - NORTH TO NEXT CURVE
 EAST INTO (STAY RIGHT AT Y AND CIRCLE AROUND TO THE NORTH)

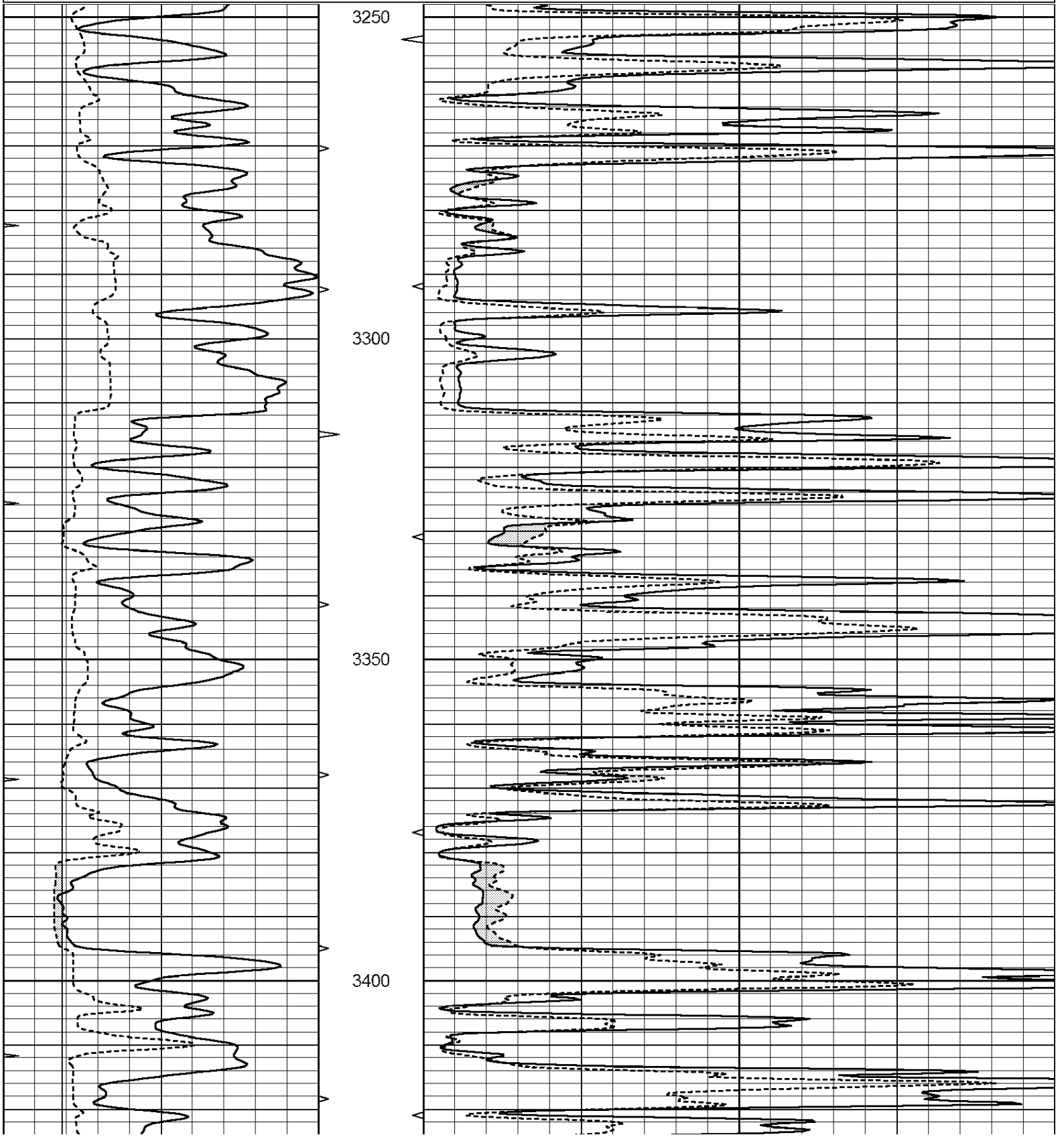


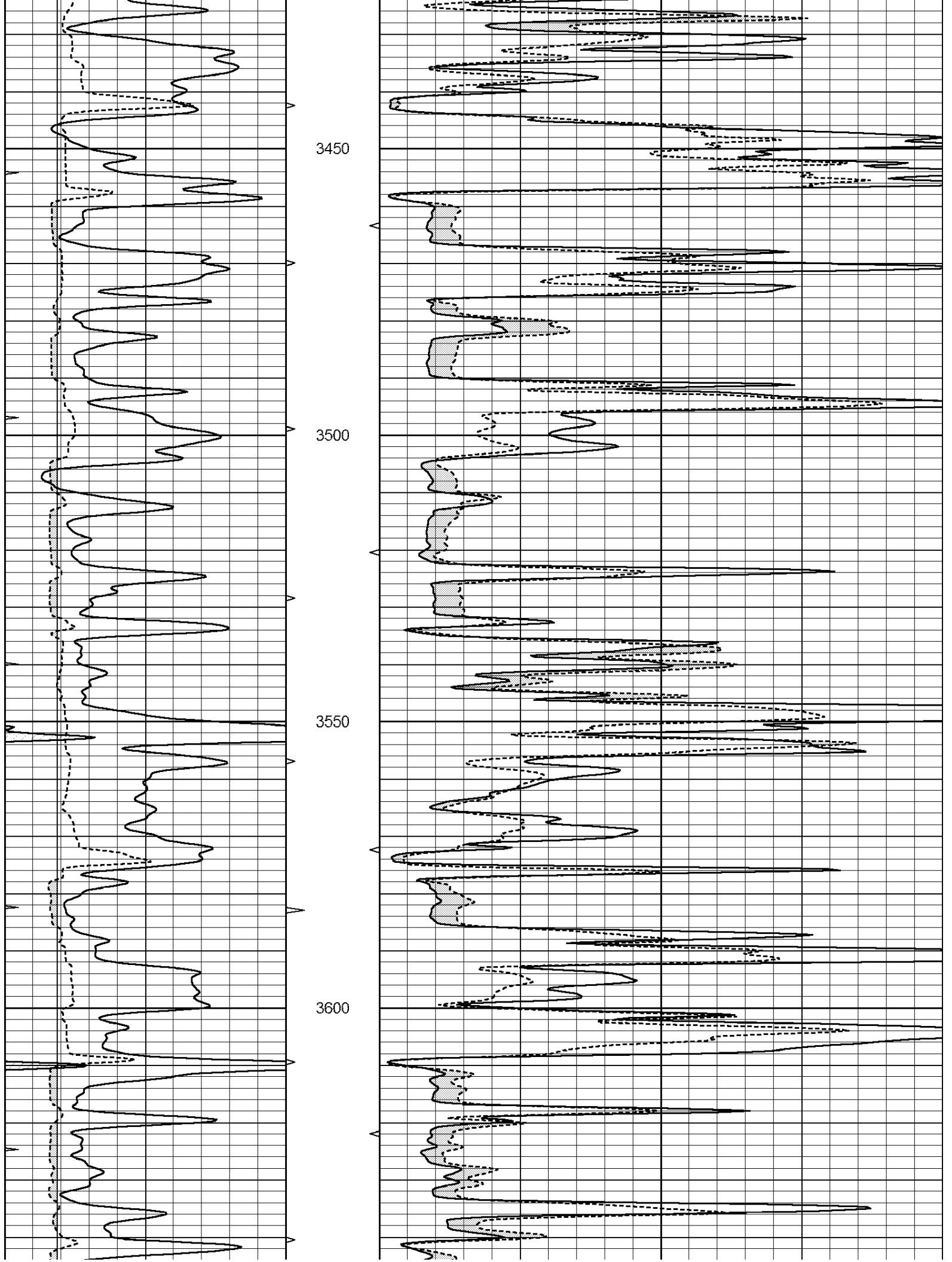
Casedhole Solutions

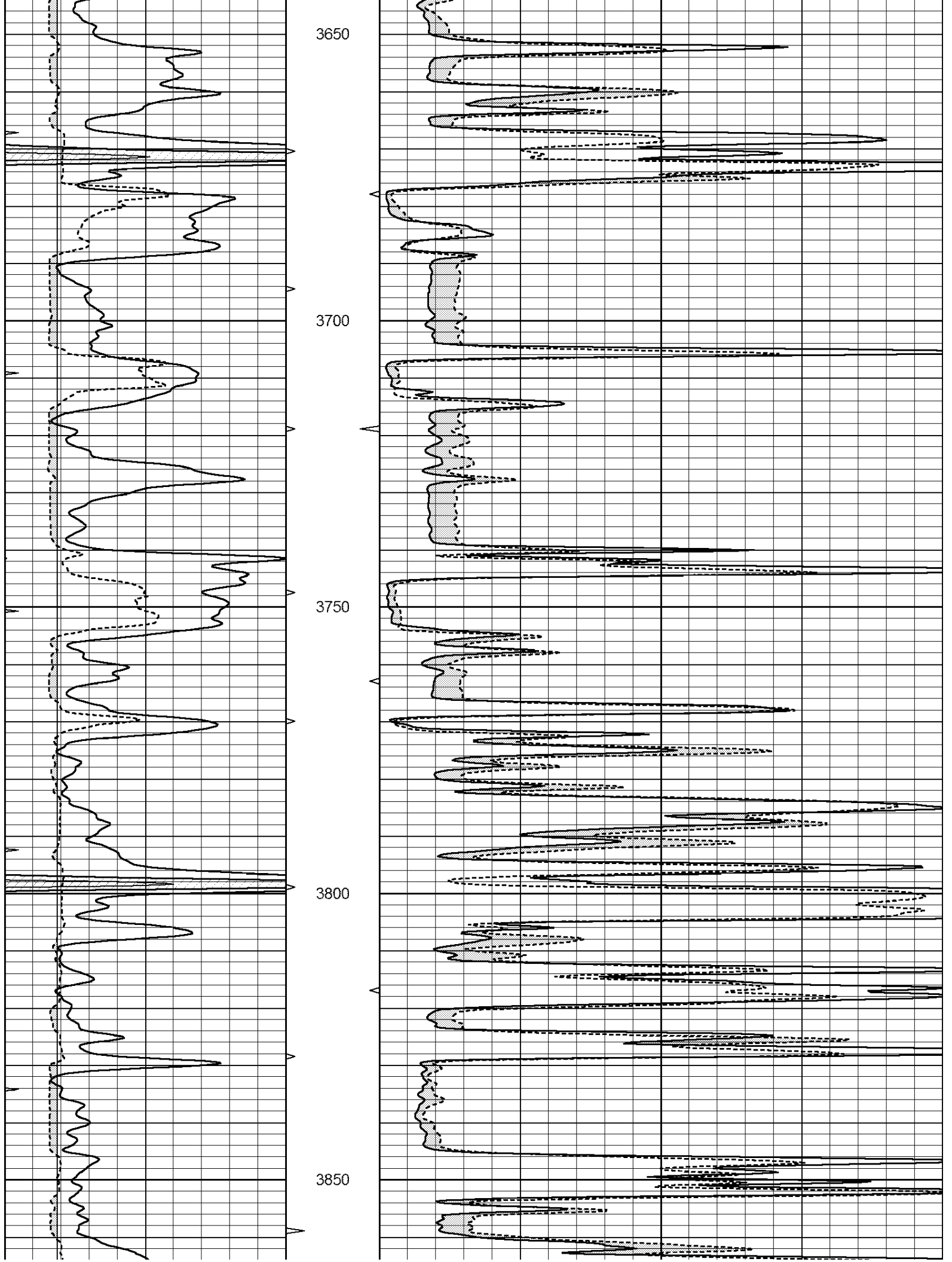
MAIN SECTION

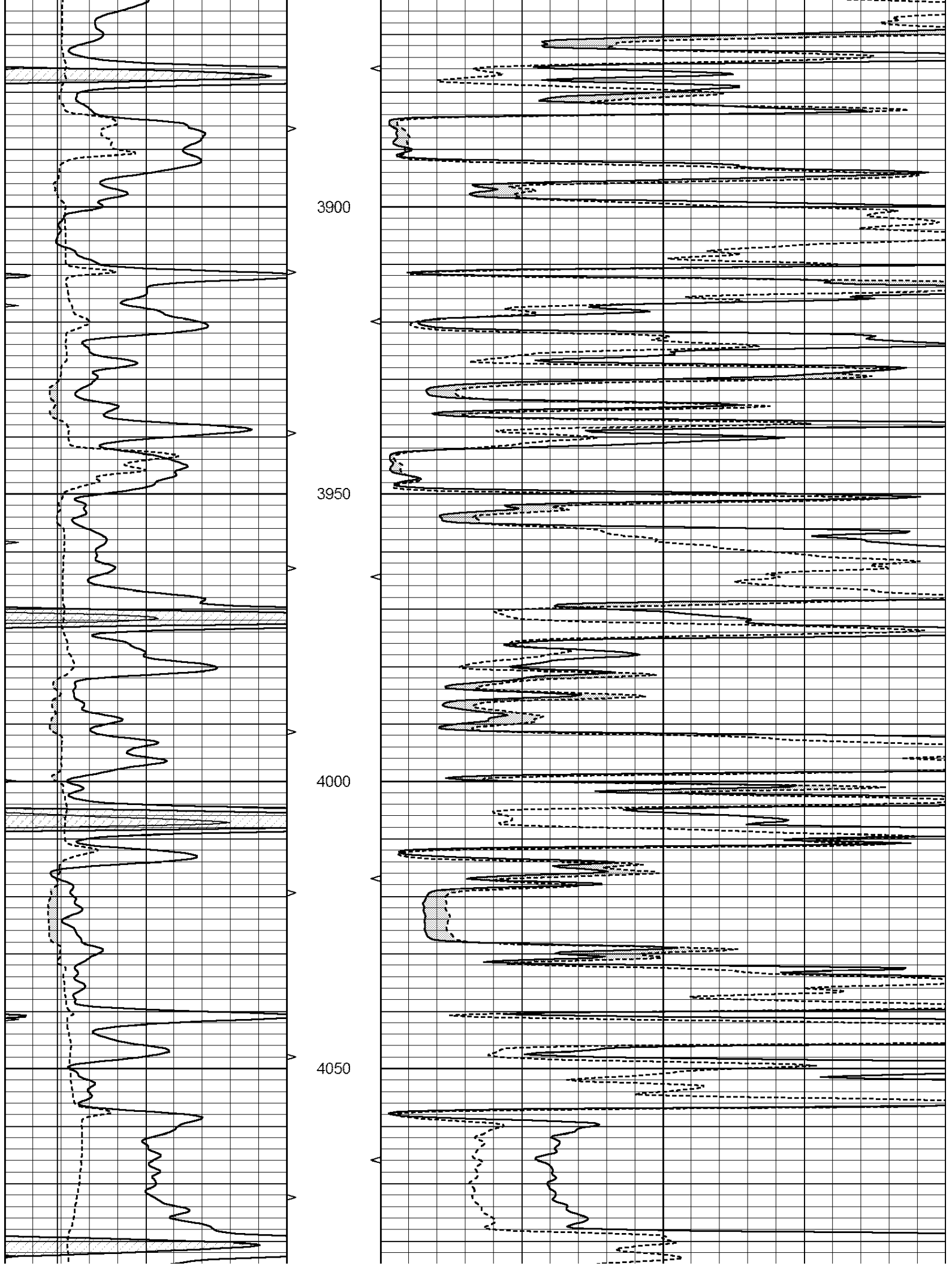
Database File: 30889ddn.db
 Dataset Pathname: pass6.1
 Presentation Format: _micro
 Dataset Creation: Fri Dec 18 06:04:19 2015 by Calc Open-Cased 090629
 Charted by: Depth in Feet scaled 1:240

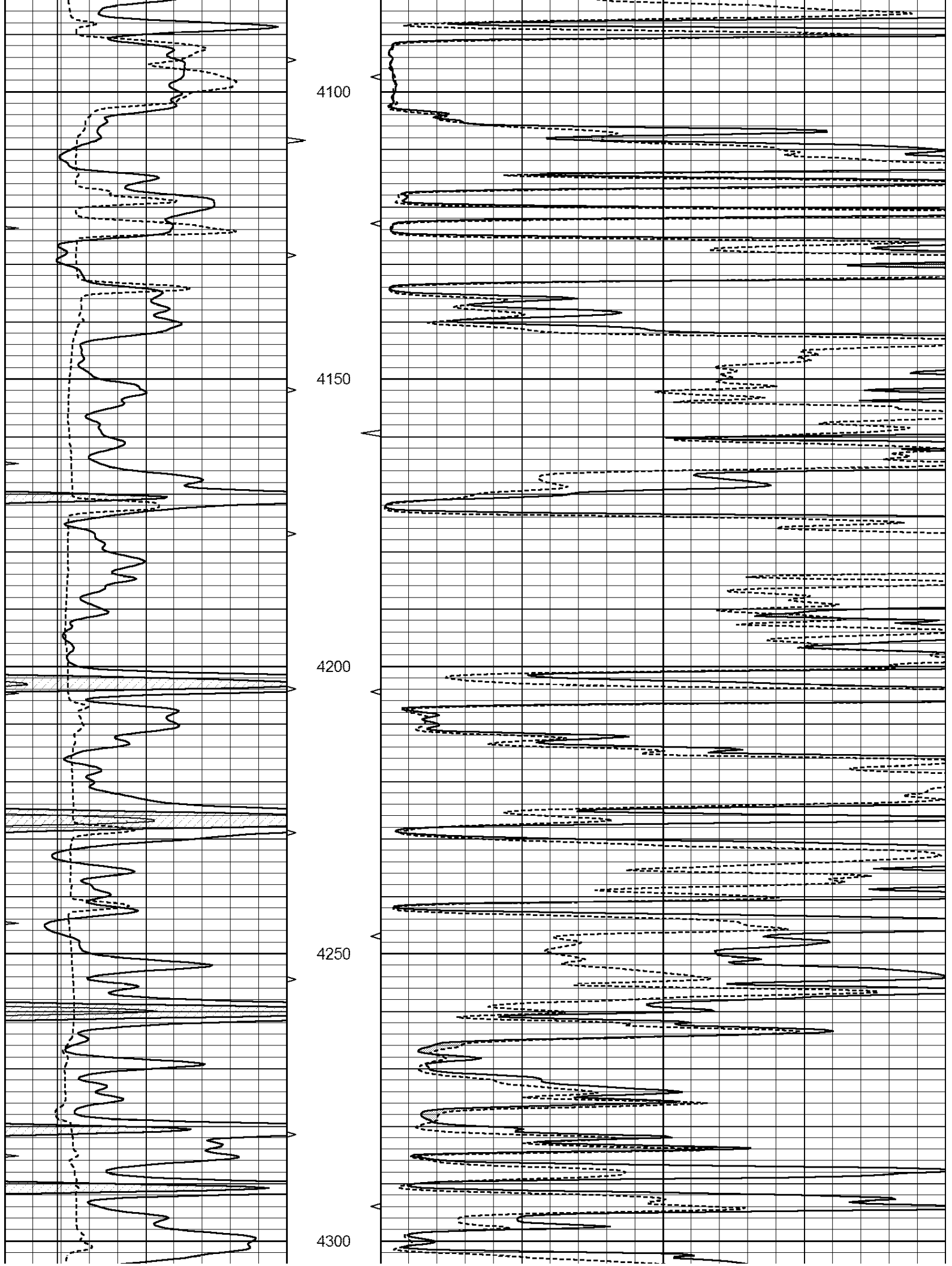
0	GAMMA RAY (GAPI)	150	ABHV	0	MEL1.5 (Ohm-m)	40
6	CALIPER (in)	16	10 (ft3)	0	MEL2.0 (Ohm-m)	40
0	MINMK	20	TBHV			
			0 (ft3)	10		

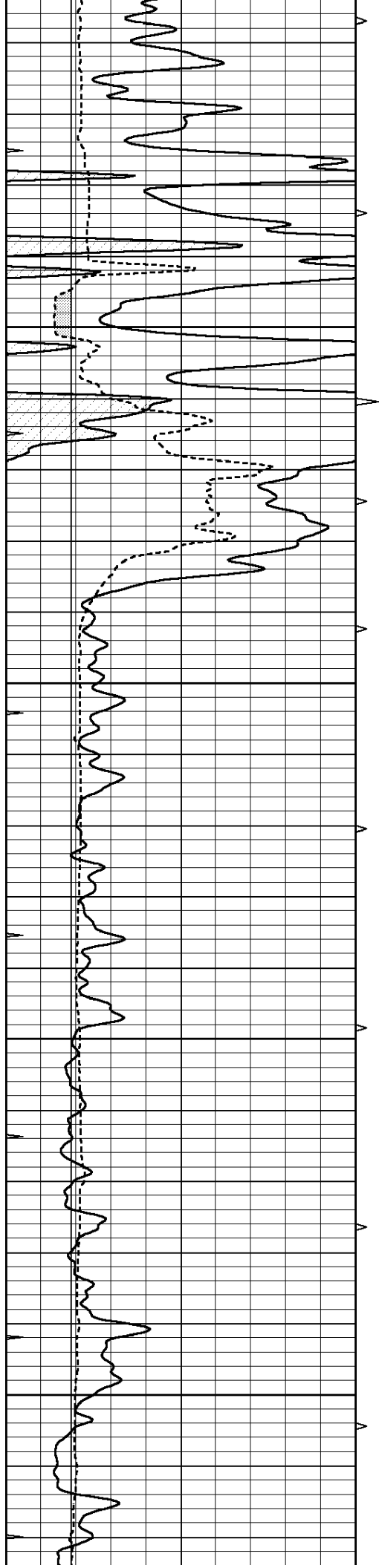










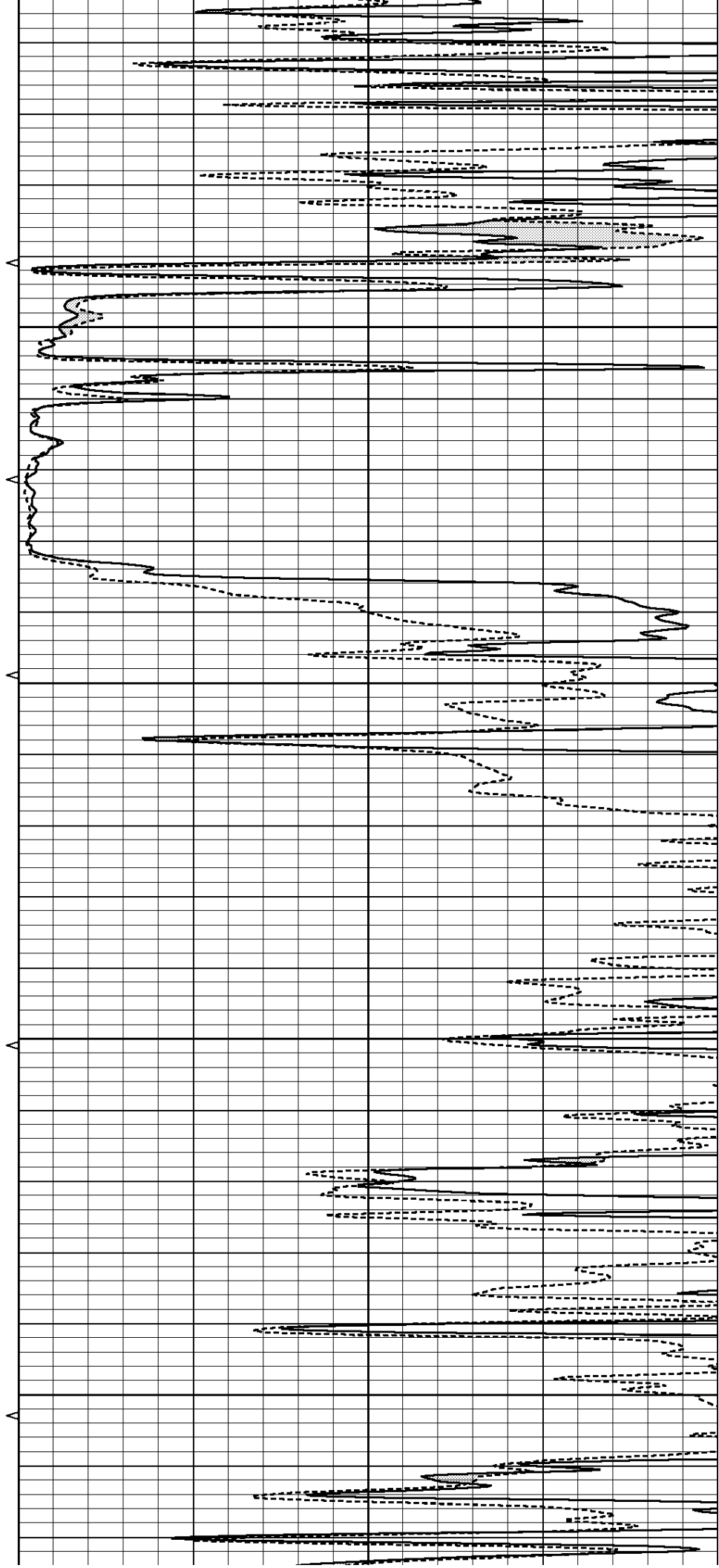


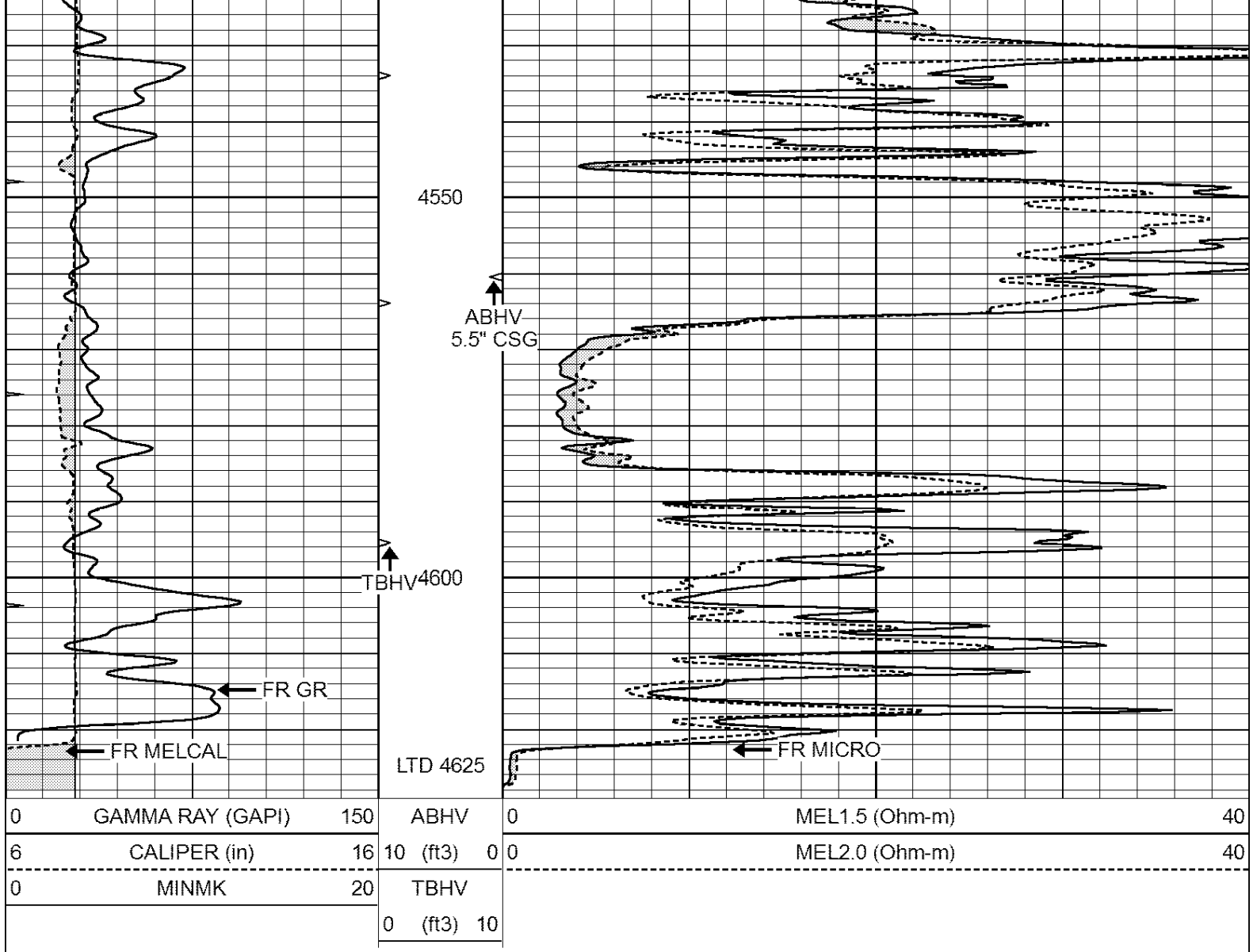
4350

4400

4450

4500



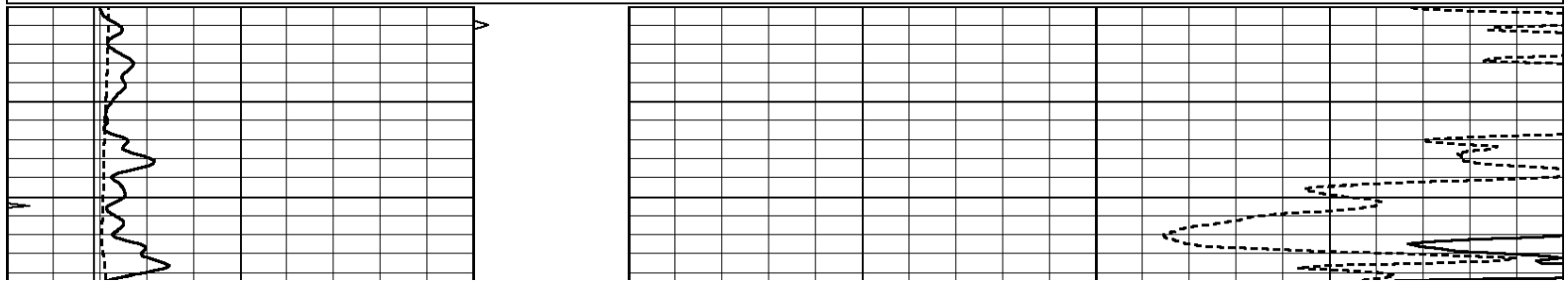


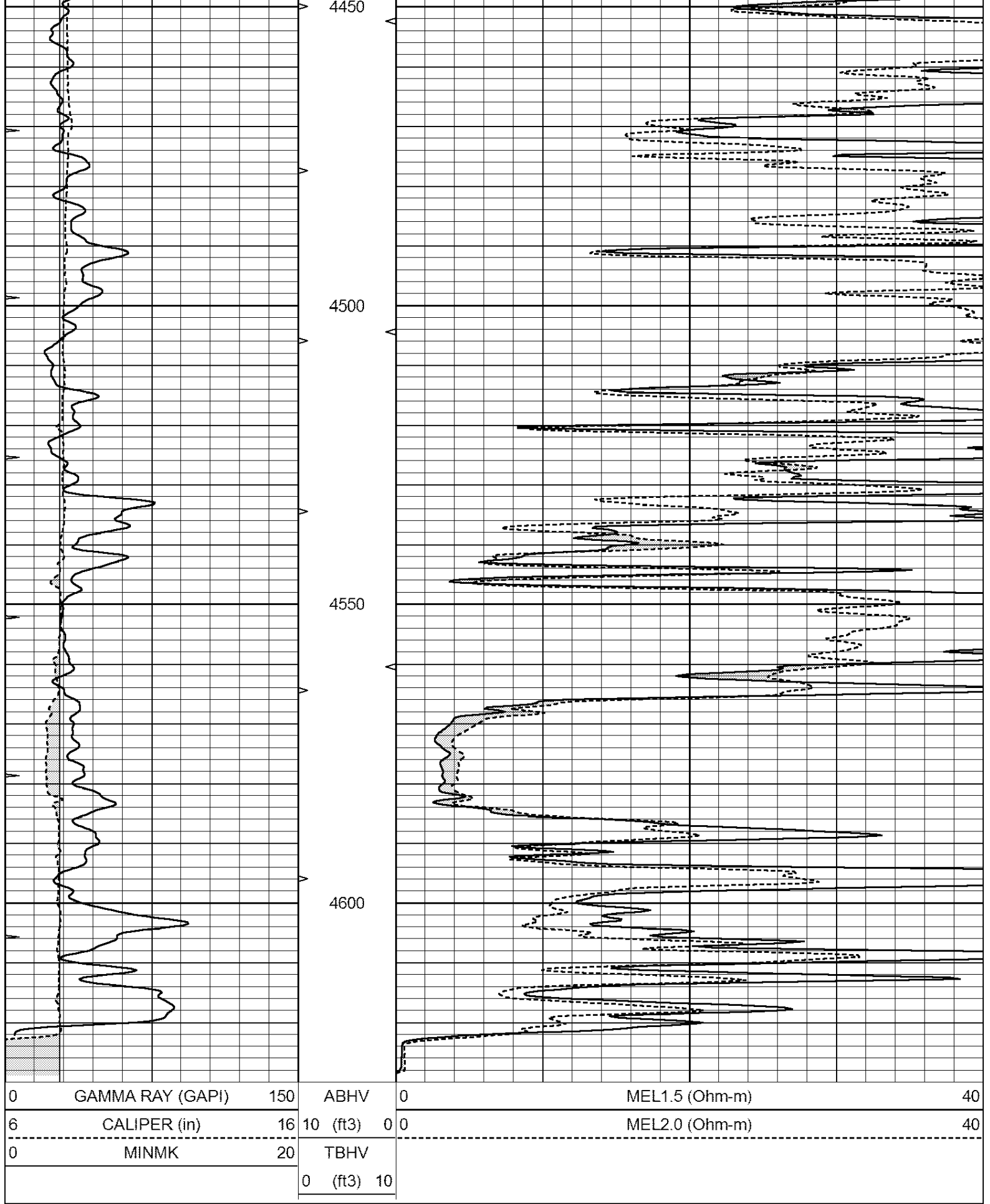
Casedhole Solutions

REPEAT SECTION

Database File: 30889ddn.db
 Dataset Pathname: pass5.1
 Presentation Format: _micro
 Dataset Creation: Fri Dec 18 05:25:50 2015 by Calc Open-Cased 090629
 Charted by: Depth in Feet scaled 1:240

0	GAMMA RAY (GAPI)	150	ABHV	0	MEL1.5 (Ohm-m)	40
6	CALIPER (in)	16	10 (ft3)	0	MEL2.0 (Ohm-m)	40
0	MINMK	20	TBHV			
			0 (ft3)	10		





Calibration Report

Database File: 30889ddn.db
 Dataset Pathname: pass5.1
 Dataset Creation: Fri Dec 18 05:25:50 2015 by Calc Open-Caseid 090629

MICRO Calibration Report			
Serial Number:	MICRO6		
Tool Model:	PROBE		
Performed:	Wed Aug 26 00:34:46 2015		
Caliper Calibration:	Gain=3.960	Offset=4.601	
	Low Cal	High Cal	
References	7.000	14.000	
Readings	0.555	2.323	
1.5" Calibration:	Gain=38.075	Offset=-0.400	
	Low Cal	High Cal	
References	0.000	20.000	
Readings	0.004	1.196	
2" Calibration:	Gain=48.000	Offset=-1.000	
	Low Cal	High Cal	
References	0.000	20.000	
Readings	0.006	0.913	

Gamma Ray Calibration Report			
Serial Number:	GR6		
Tool Model:	OPEN		
Performed:	Thu Nov 12 05:47:01 2015		
Calibrator Value:	150.0	GAPI	
Background Reading:	0.0	cps	
Calibrator Reading:	276.0	cps	
Sensitivity:	0.4500	GAPI/cps	