



**MICRORESISTIVITY LOG**

Company **MUSTANG ENERGY CORPORATION**  
 Well **KUHN #1**  
 Field **LUNGREN**  
 County **GOVE**  
 State **KANSAS**

Company **MUSTANG ENERGY CORPORATION**  
 Well **KUHN #1**  
 Field **LUNGREN**  
 County **GOVE** State **KANSAS**

Location: **API #: 15-063-22273-00-00**  
**2300' FSL & 935' FWL**  
**SEC 25 TWP 14S RGE 30W**  
 Permanent Datum **GROUND LEVEL Elevation 2681**  
 Log Measured From **KELLY BUSHING**  
 Drilling Measured From **KELLY BUSHING**

Other Services  
**CNL/CDL DIL**  
 Elevation  
 K.B. 2689  
 D.F. N/A  
 G.L. 2681

Date	11/11/2015
Run Number	ONE
Depth Driller	4480
Depth Logger	4480
Bottom Logged Interval	4479
Top Log Interval	3500
Casing Driller	8:625 @ 220
Casing Logger	222
Bit Size	7.875
Type Fluid in Hole	CHEMICAL
Salinity, ppm CL	1200
Density / Viscosity	9.3 40
pH / Fluid Loss	9.0 8.8
Source of Sample	Flowline
Rm @ Meas. Temp	0.90 @ 42
Rmt @ Meas. Temp	0.68 @ 42
Rmc @ Meas. Temp	1.22 @ 42
Source of Rmf / Rmc	Charts
Rm @ BHT	0.31 @ 121
Operating Rig Time	3 1/2 HOURS
Max Rec. Temp. F	121
Equipment Number	91
Location	Hays
Recorded By	D. SCHMIDT
Witnessed By	JEFF LAWLER

<<< Fold Here >>>

All interpretations are opinions based on inferences from electrical or other measurements and Pioneer Wireline Services, LLC cannot and does not guarantee the accuracy or correctness of any interpretation, and Pioneer Wireline Services, LLC will not be liable or responsible for any loss, costs, damages, or expenses incurred or sustained by anyone resulting from any interpretation made by any of our officers, agents or employees.

**Comments**

**N/A DENOTES NOT AVAILABLE OR NON-APPLICABLE.**

**GOVE,  
 10 SOUTH TO GOVE 1 RD,  
 6 WEST TO 32 RD, 1/2 SOUTH,  
 EAST INTO**

**Log Measured From: KELLY BUSHING 8 Ft. Above Permanent Datum**

**THANK YOU FOR USING PIONEER ENERGY SERVICES**  
**www.pioneerenergy.com 785-625-3858**

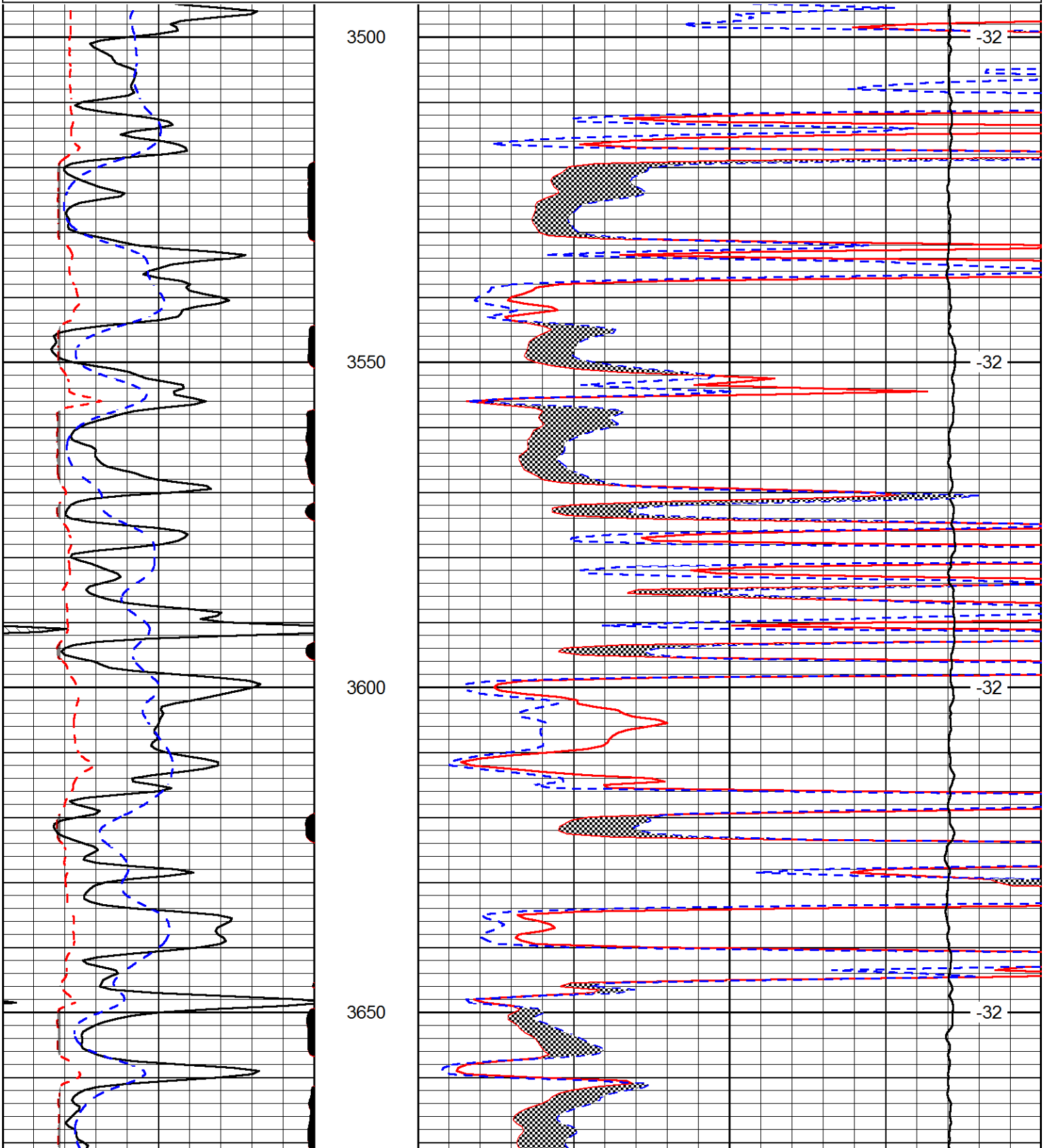
<b>Your Pioneer Energy Services Crew</b>	<b>This Log Record Was Witnessed By</b>
Engineer: D. SCHMIDT	Primary Witness: JEFF LAWLER
Operator:	Secondary Witness:
Operator:	Secondary Witness:
Operator:	Secondary Witness:

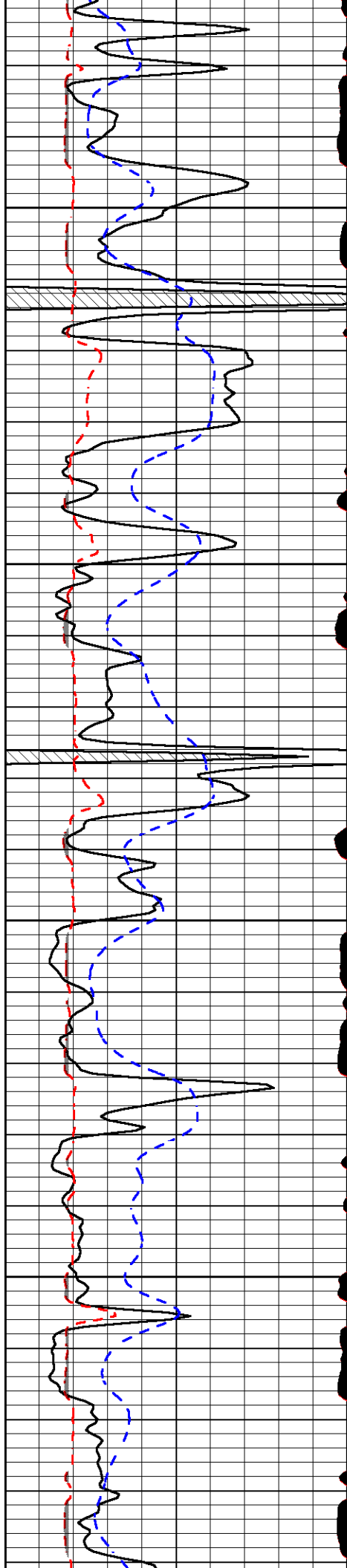
Database File mustang\_kuhn\_1hd.db  
 Dataset Pathname DIL/mustkml  
 Presentation Format micro  
 Dataset Creation Wed Nov 11 20:33:40 2015  
 Charted by Depth in Feet scaled 1:240

0	Gamma Ray (GAPI)	150
6	MCAL (in)	16
2.875	Mud Cake (in)	7.875
-200	SP (mV)	0

0	Micro Inverse 1 X 1 (Ohm-m)	40
0	Micro Normal 2" (Ohm-m)	40
10000	Line Weight (lb)	0

LSPD  
(ft/min)



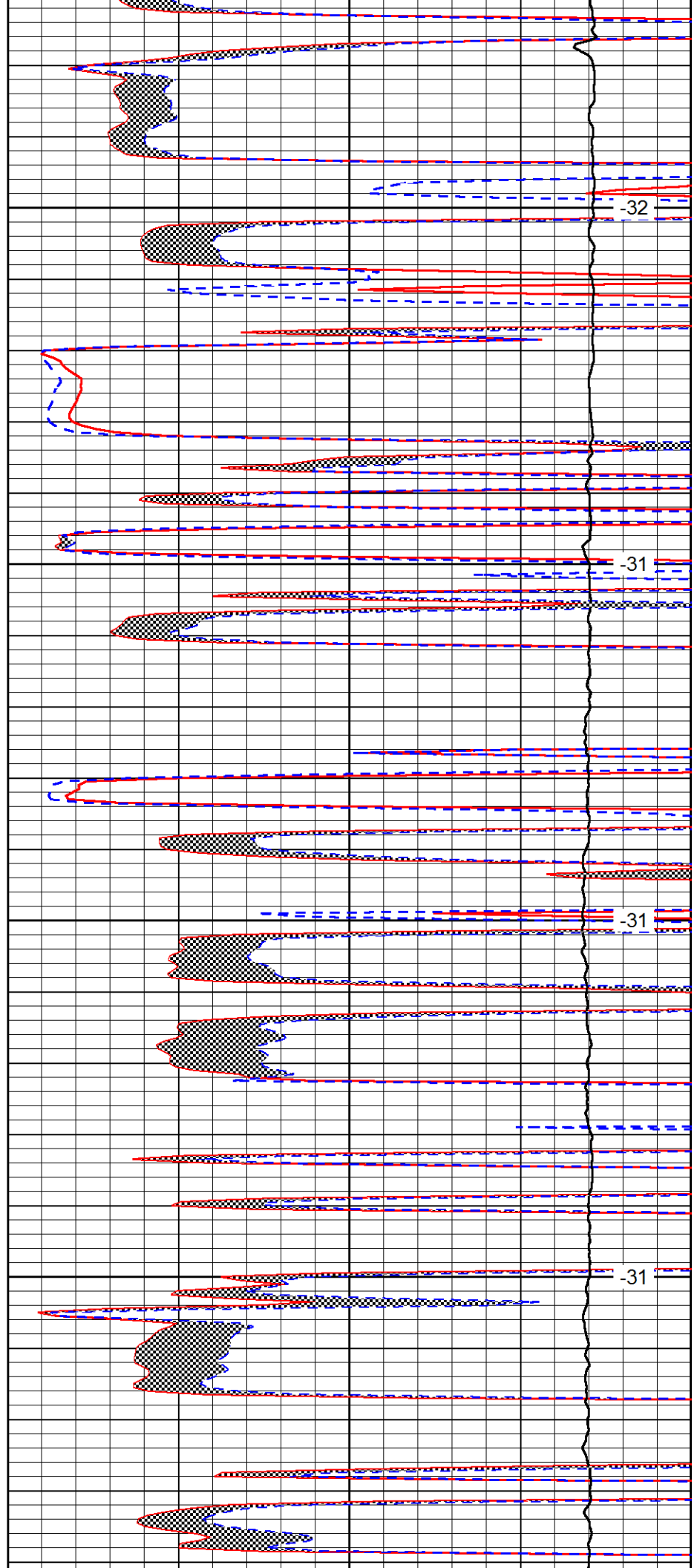


3700

3750

3800

3850

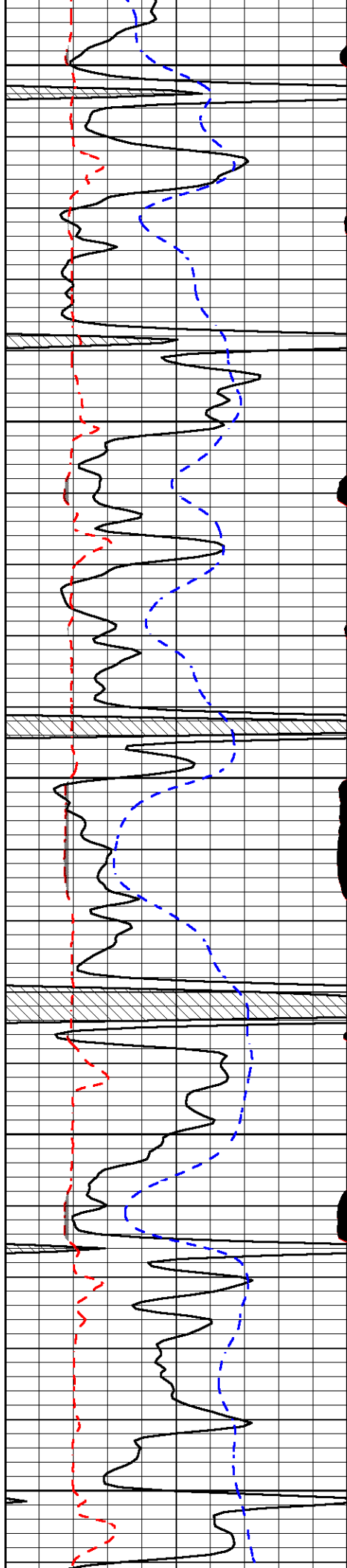


-32

-31

-31

-31



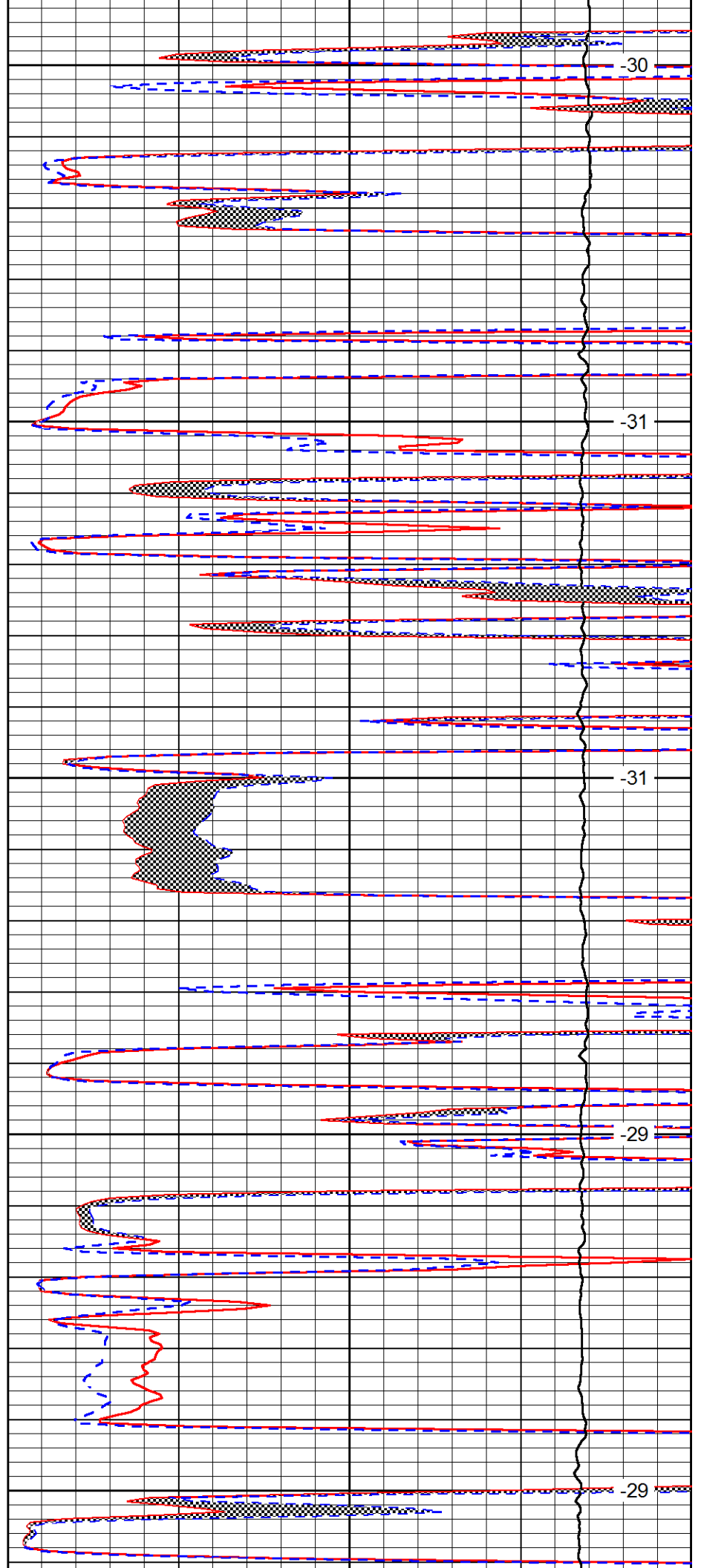
3900

3950

4000

4050

4100



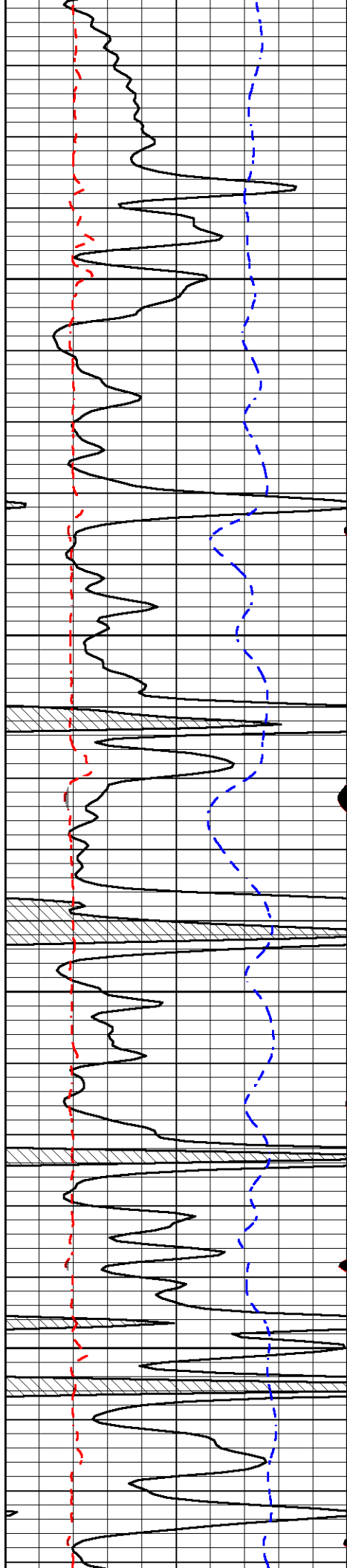
-30

-31

-31

-29

-29

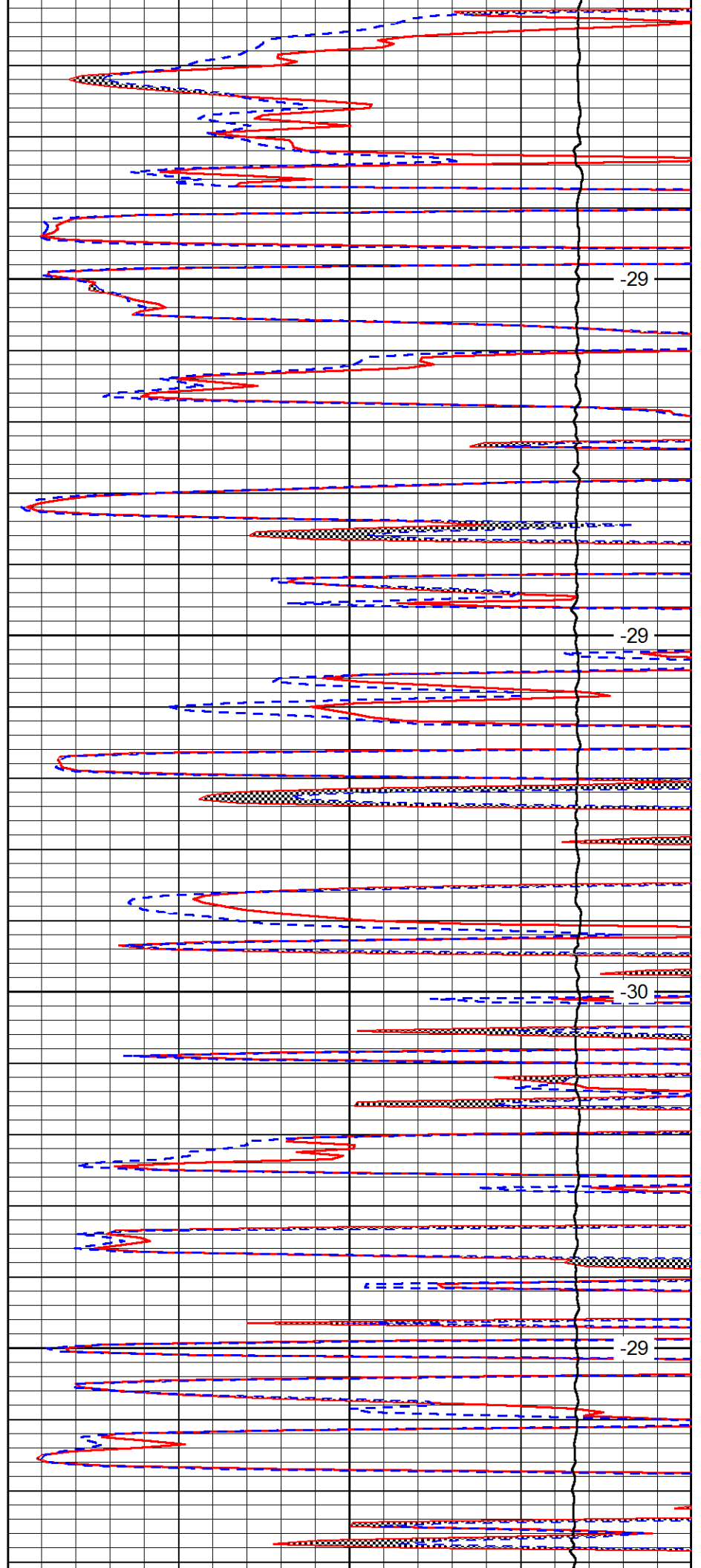


4150

4200

4250

4300

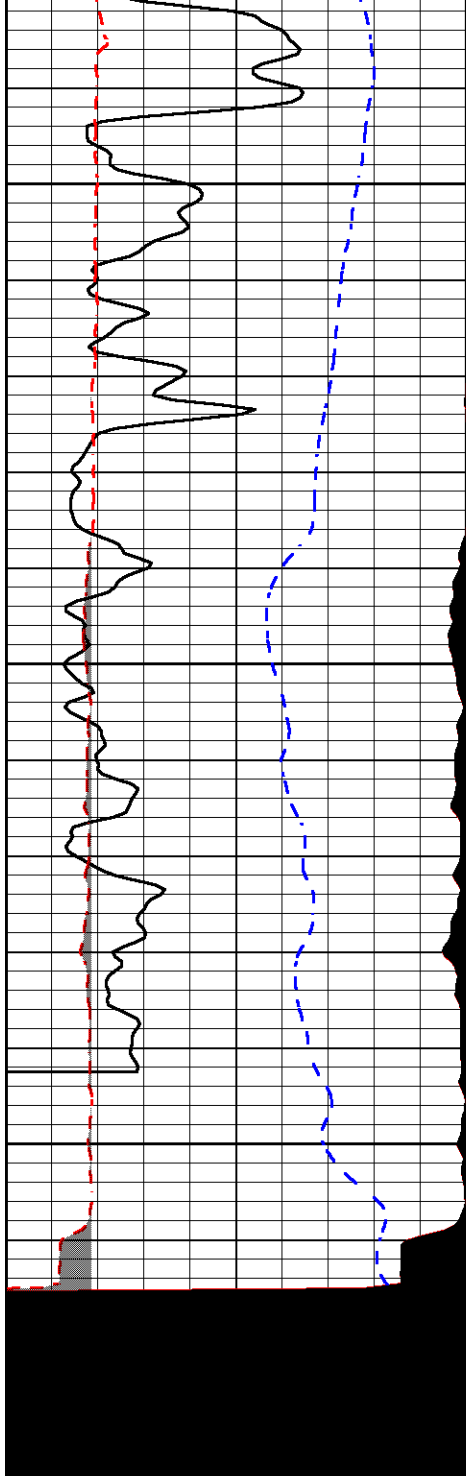


-29

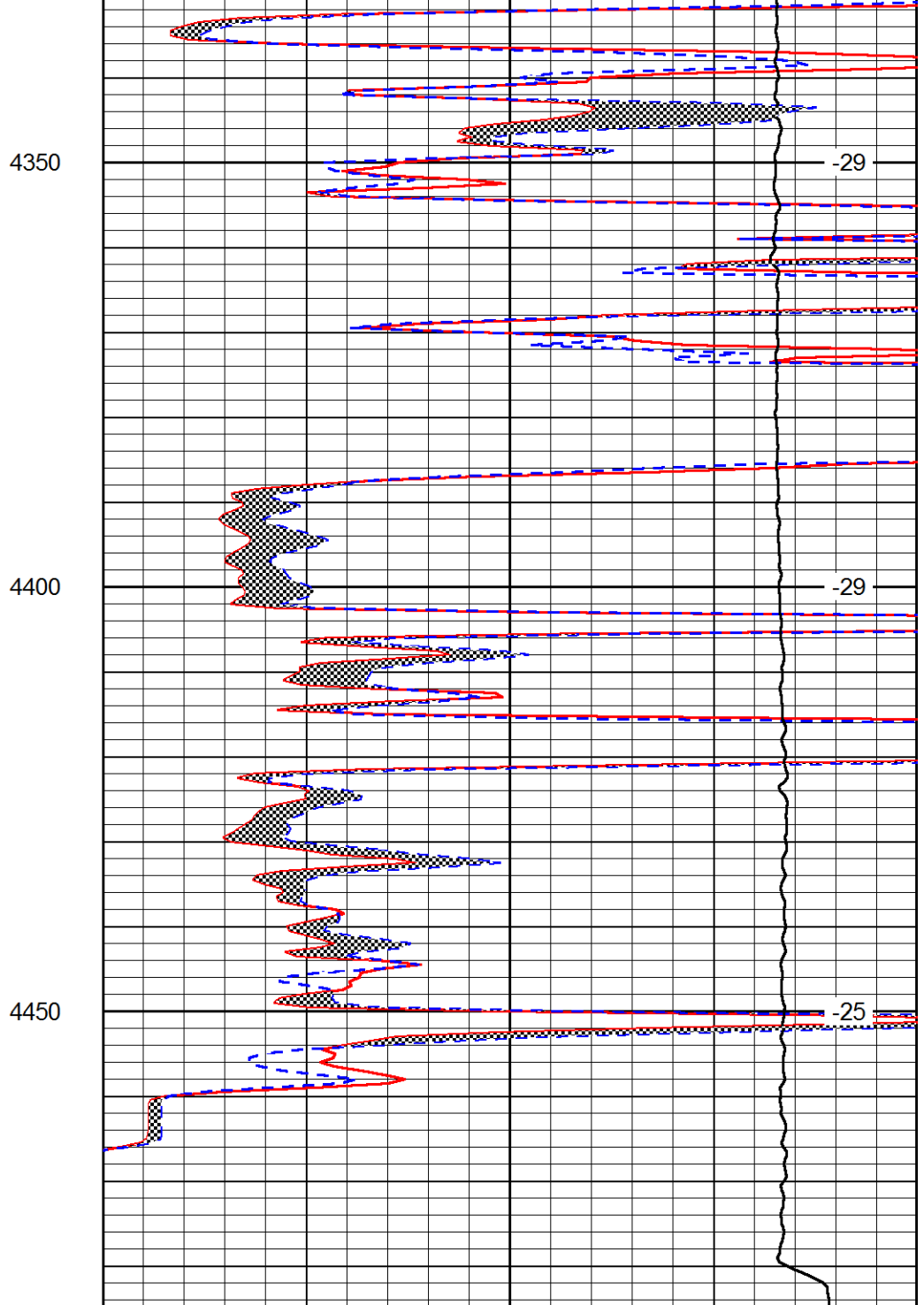
-29

-30

-29



0	Gamma Ray (GAPI)	150
6	MCAL (in)	16
2.875	Mud Cake (in)	7.875
-200	SP (mV)	0



0	Micro Inverse 1 X 1 (Ohm-m)	40
0	Micro Normal 2" (Ohm-m)	40
10000	Line Weight (lb)	0

LSPD  
(ft/min)