



DUAL INDUCTION LOG

Company: MUSTANG ENERGY CORPORATION
 Well: KUHN #1
 Field: LUNGREN
 County: GOVE
 State: KANSAS

Company: MUSTANG ENERGY CORPORATION
 Well: KUHN #1
 Field: LUNGREN
 County: GOVE
 State: KANSAS

Location: API #: 15-063-22273-00-00
 2300' FSL & 935' FWL
 SEC 25 TWP 14S RGE 30W
 Permanent Datum: GROUND LEVEL Elevation 2681
 Log Measured From: KELLY BUSHING
 Drilling Measured From: KELLY BUSHING
 Other Services: CNL/CDL MEL
 Elevation: K.B. 2689, D.F. N/A, G.L. 2681

Date	11/11/2015
Run Number	ONE
Depth Driller	4480
Depth Logger	4480
Bottom Logged Interval	4479
Top Log Interval	200
Casing Driller	8:625 @ 220
Casing Logger	222
Bit Size	7.875
Type Fluid in Hole	CHEMICAL
Salinity, ppm CL	1200
Density / Viscosity	9.3 40
pH / Fluid Loss	9.0 8.8
Source of Sample	Flowline
Rm @ Meas. Temp	0.90 @ 42
Rmt @ Meas. Temp	0.68 @ 42
Rmc @ Meas. Temp	1.22 @ 42
Source of Rmf / Rmc	Charts
Rm @ BHT	0.31 @ 121
Operating Rig Time	3 1/2 HOURS
Max Rec. Temp. F	121
Equipment Number	91
Location	Hays
Recorded By	D. SCHMIDT
Witnessed By	JEFF LAWLER

<<< Fold Here >>>

All interpretations are opinions based on inferences from electrical or other measurements and Pioneer Wireline Services, LLC cannot and does not guarantee the accuracy or correctness of any interpretation, and Pioneer Wireline Services, LLC will not be liable or responsible for any loss, costs, damages, or expenses incurred or sustained by anyone resulting from any interpretation made by any of our officers, agents or employees.

Comments

N/A DENOTES NOT AVAILABLE OR NON-APPLICABLE.

GOVE,
 10 SOUTH TO GOVE 1 RD,
 6 WEST TO 32 RD, 1/2 SOUTH,
 EAST INTO

Log Measured From: KELLY BUSHING 8 Ft. Above Permanent Datum

THANK YOU FOR USING PIONEER ENERGY SERVICES
www.pioneerenergy.com 785-625-3858

Your Pioneer Energy Services Crew Engineer: D. SCHMIDT Operator: Operator: Operator:	This Log Record Was Witnessed By Primary Witness: JEFF LAWLER Secondary Witness: Secondary Witness: Secondary Witness:
--	--

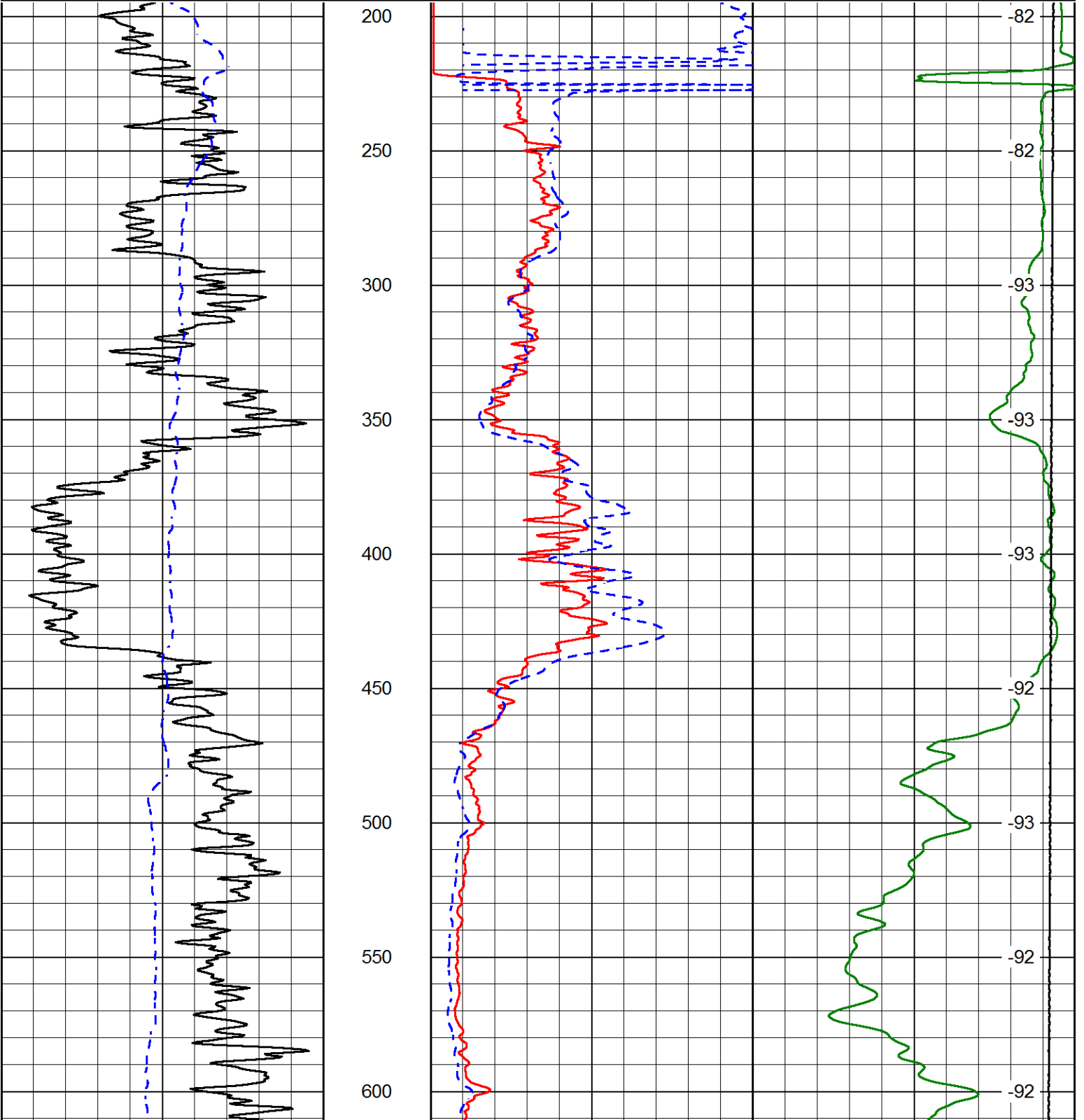
Database File mustang_kuhn_1hd.db
 Dataset Pathname DIL/mustkml
 Presentation Format dil2in
 Dataset Creation Wed Nov 11 20:33:40 2015
 Charted by Depth in Feet scaled 1:600

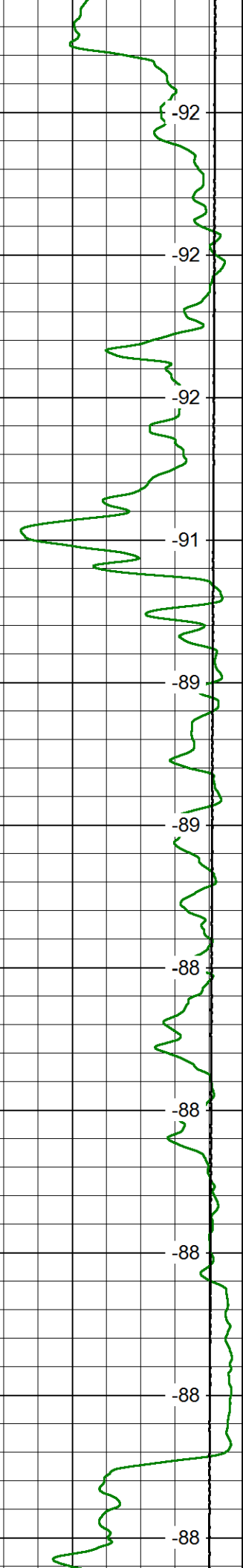
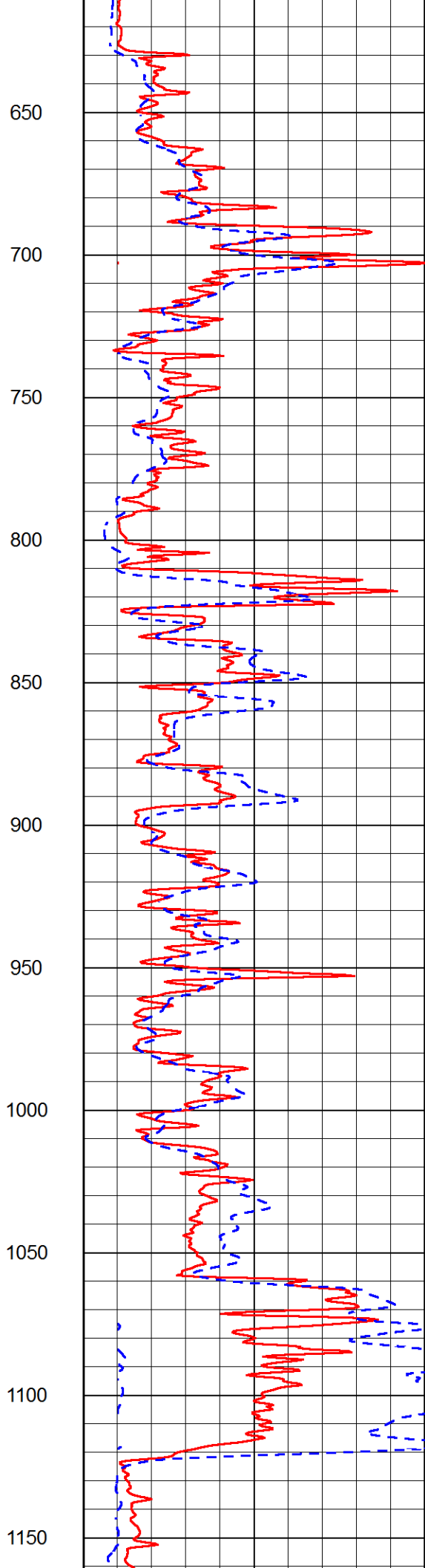
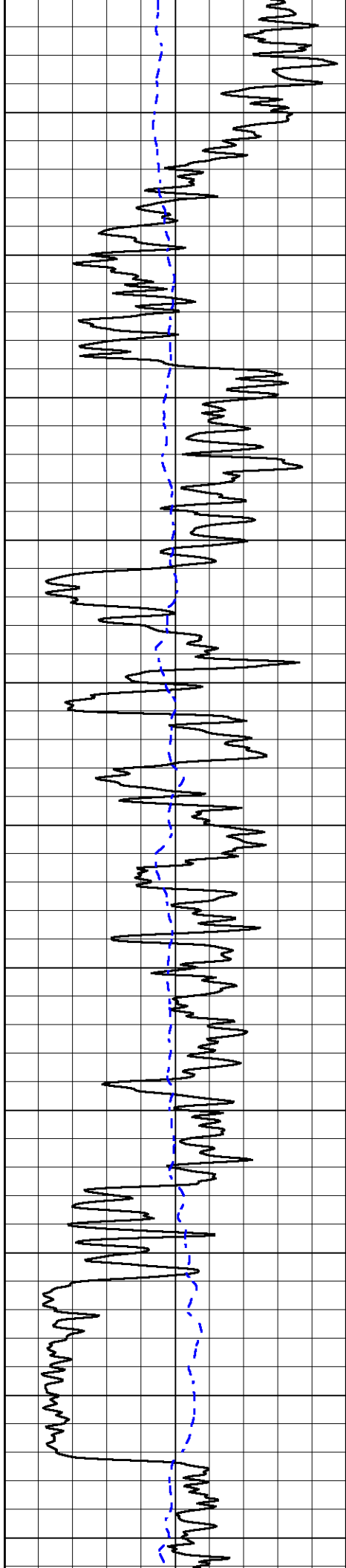
0 Gamma Ray (GAPI) 150
 -200 SP (mV) 0

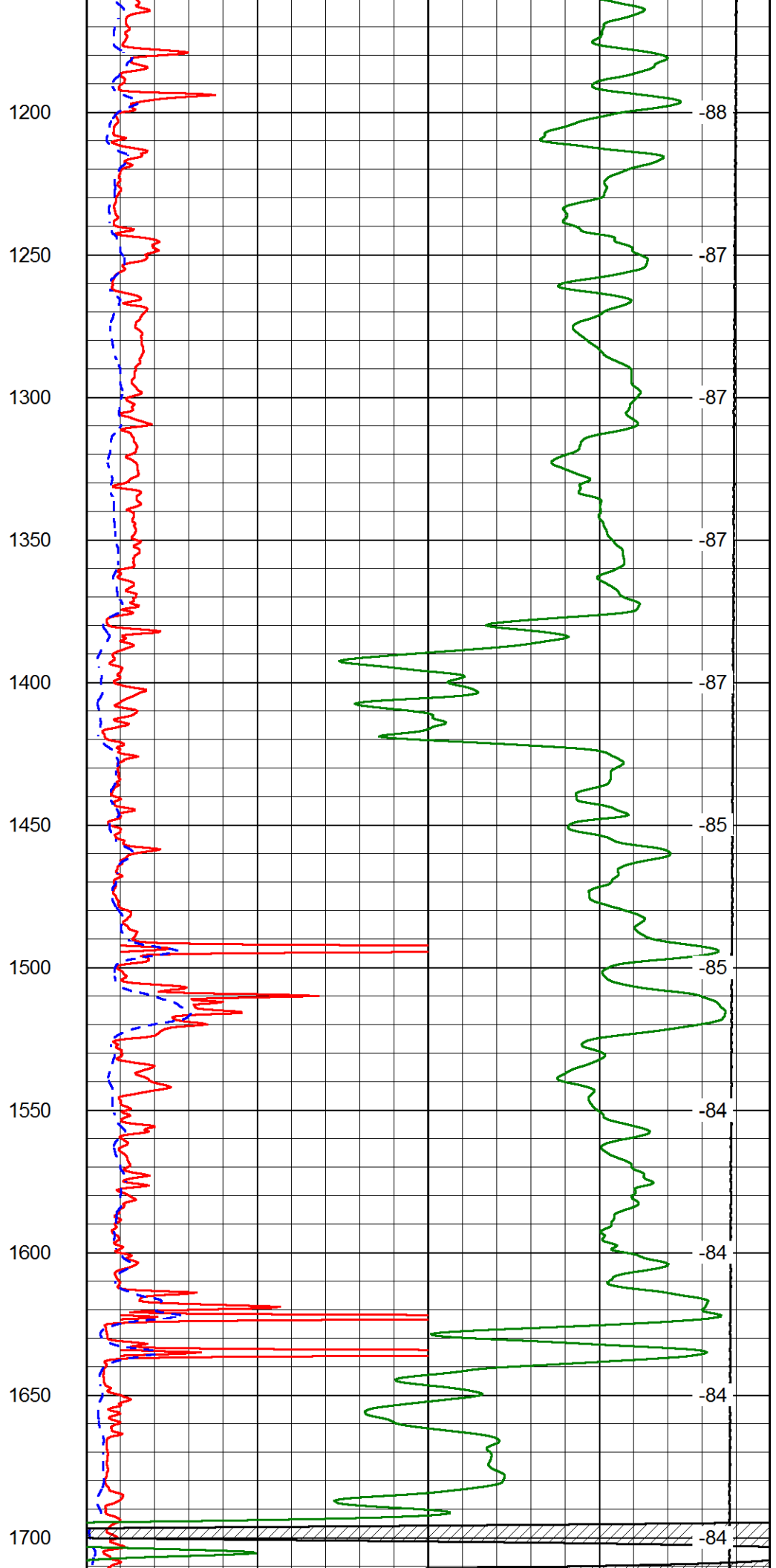
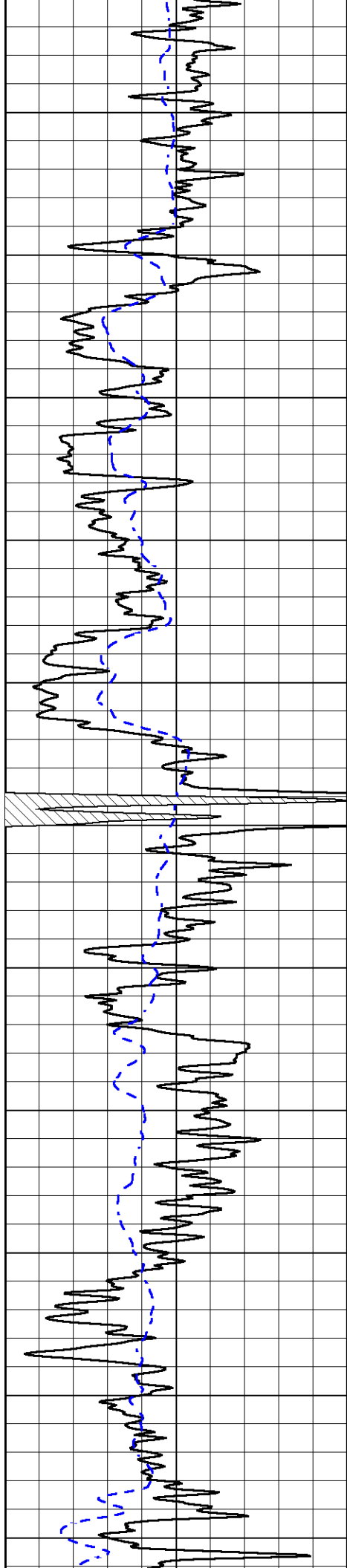
1000 Conductivity 0
 15000 Line Tension (lb) 0

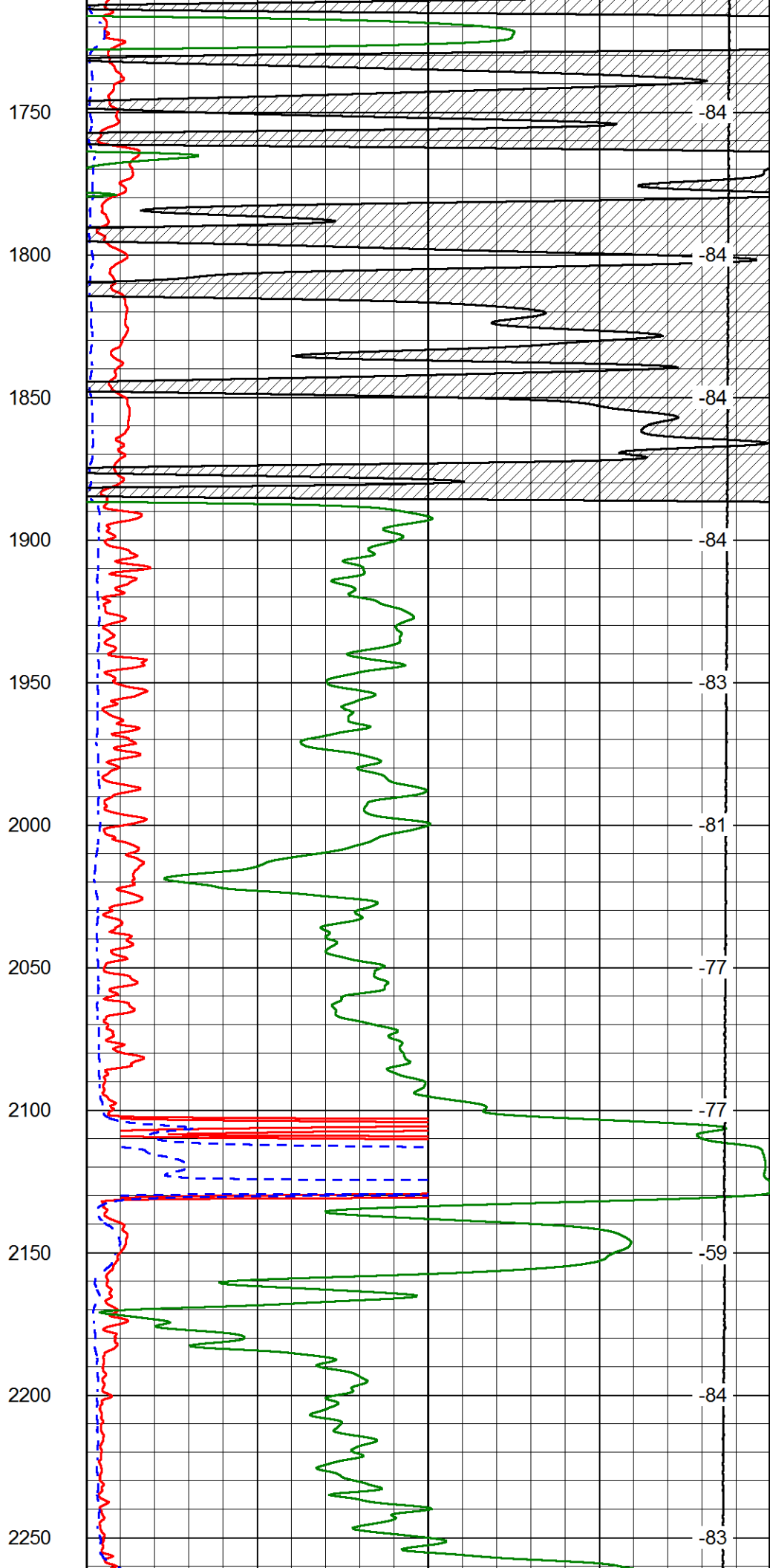
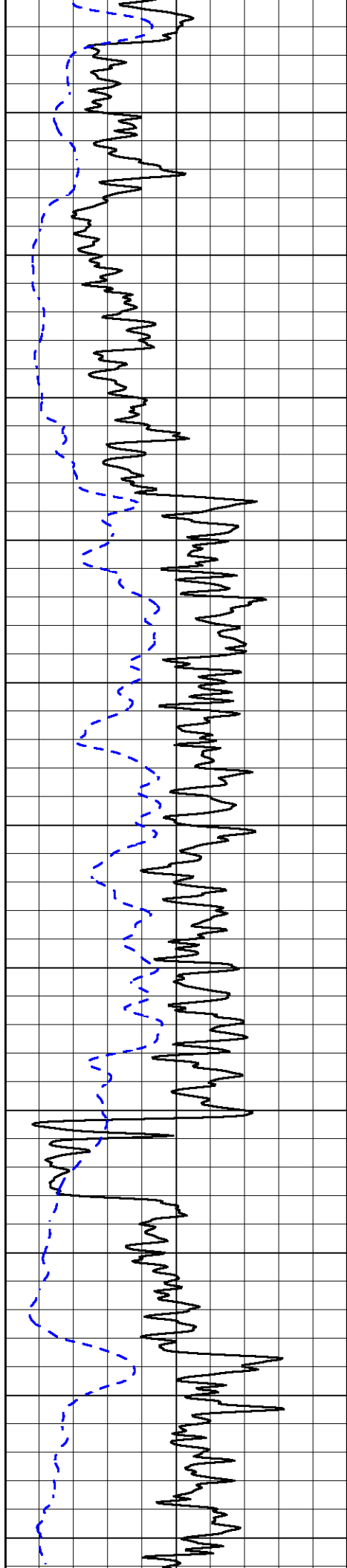
0 Shallow Resistivity (Ohm-m) 50
 0 Deep Resistivity (Ohm-m) 50
 Shallow Resistivity
 50 (Ohm-m) 500
 50 Deep Resistivity (Ohm-m) 500

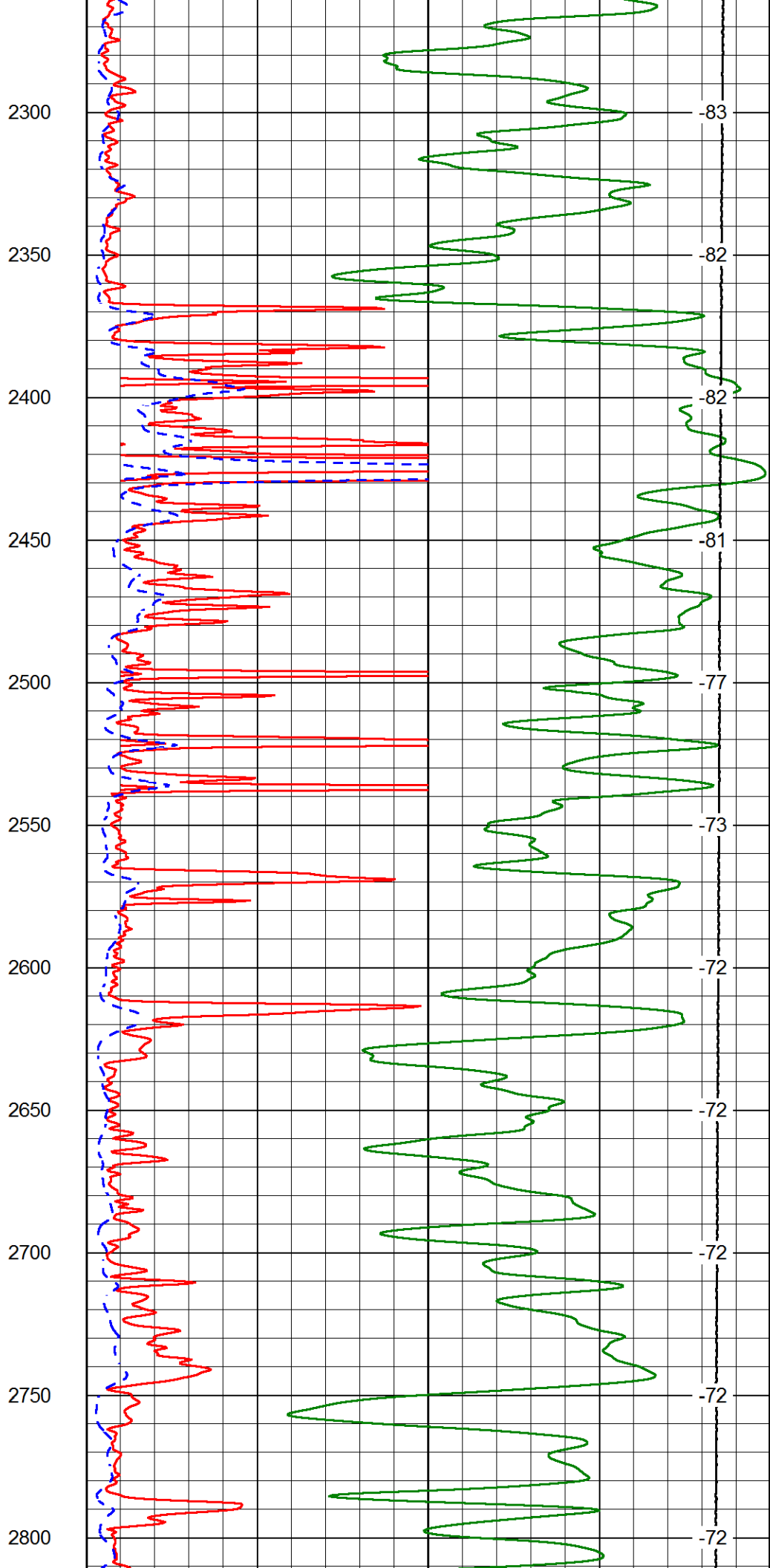
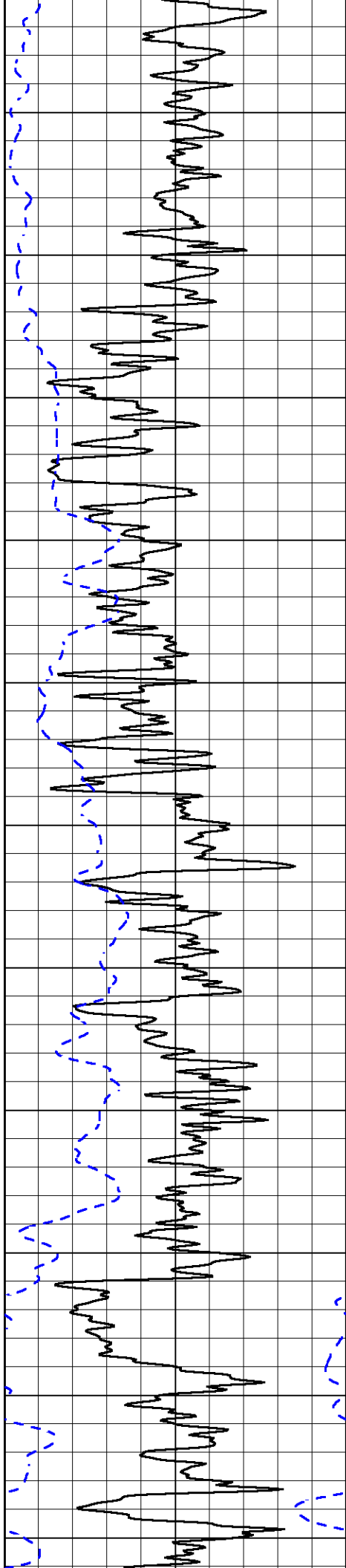
LSPD
 (ft/min)

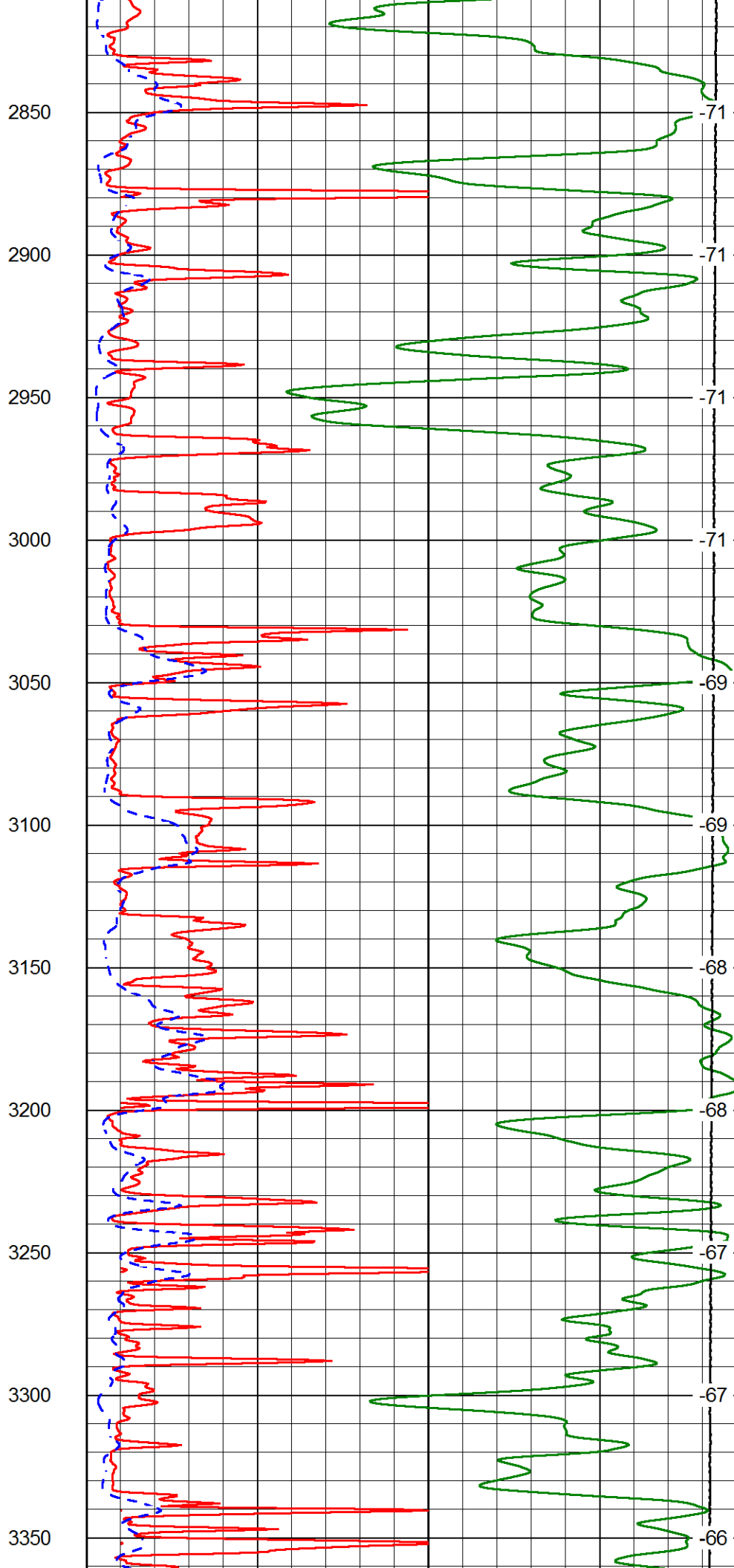
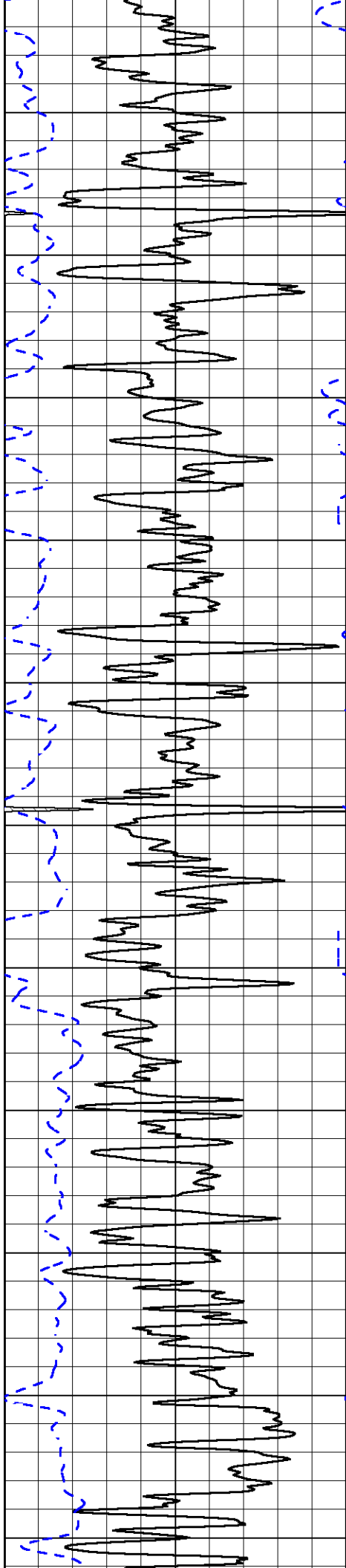


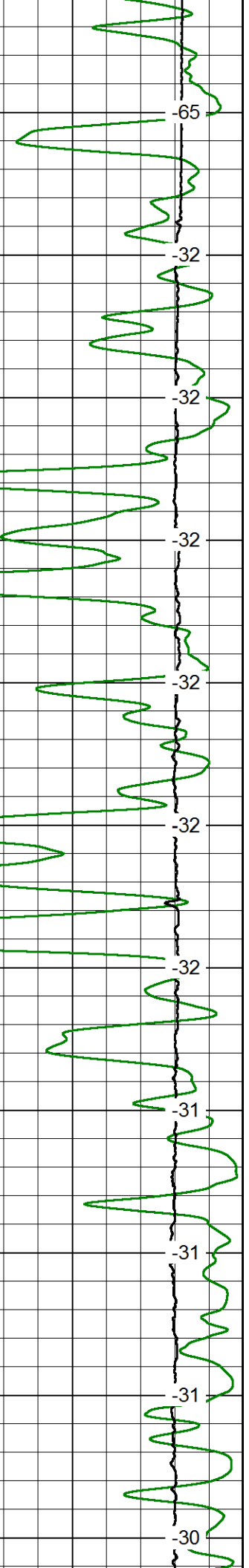
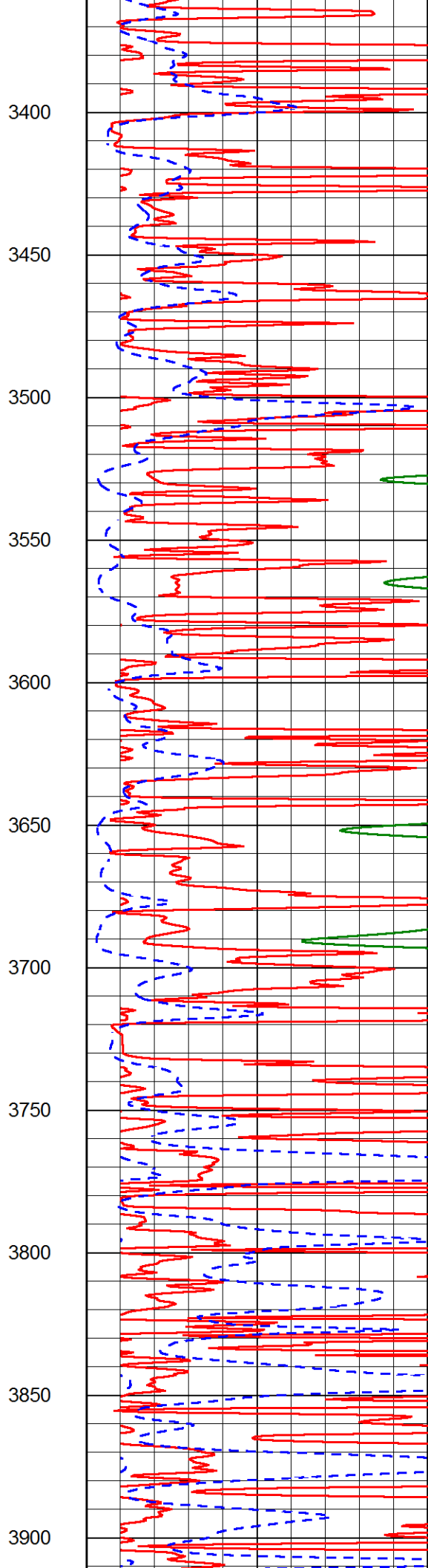
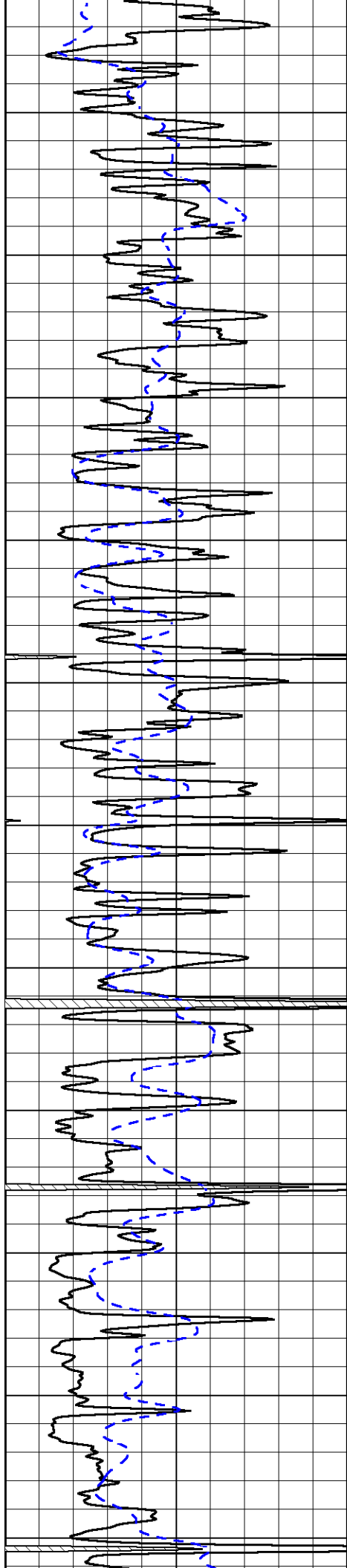












3400

-65

3450

-32

3500

-32

3550

-32

3600

-32

3650

-32

3700

-32

3750

-31

3800

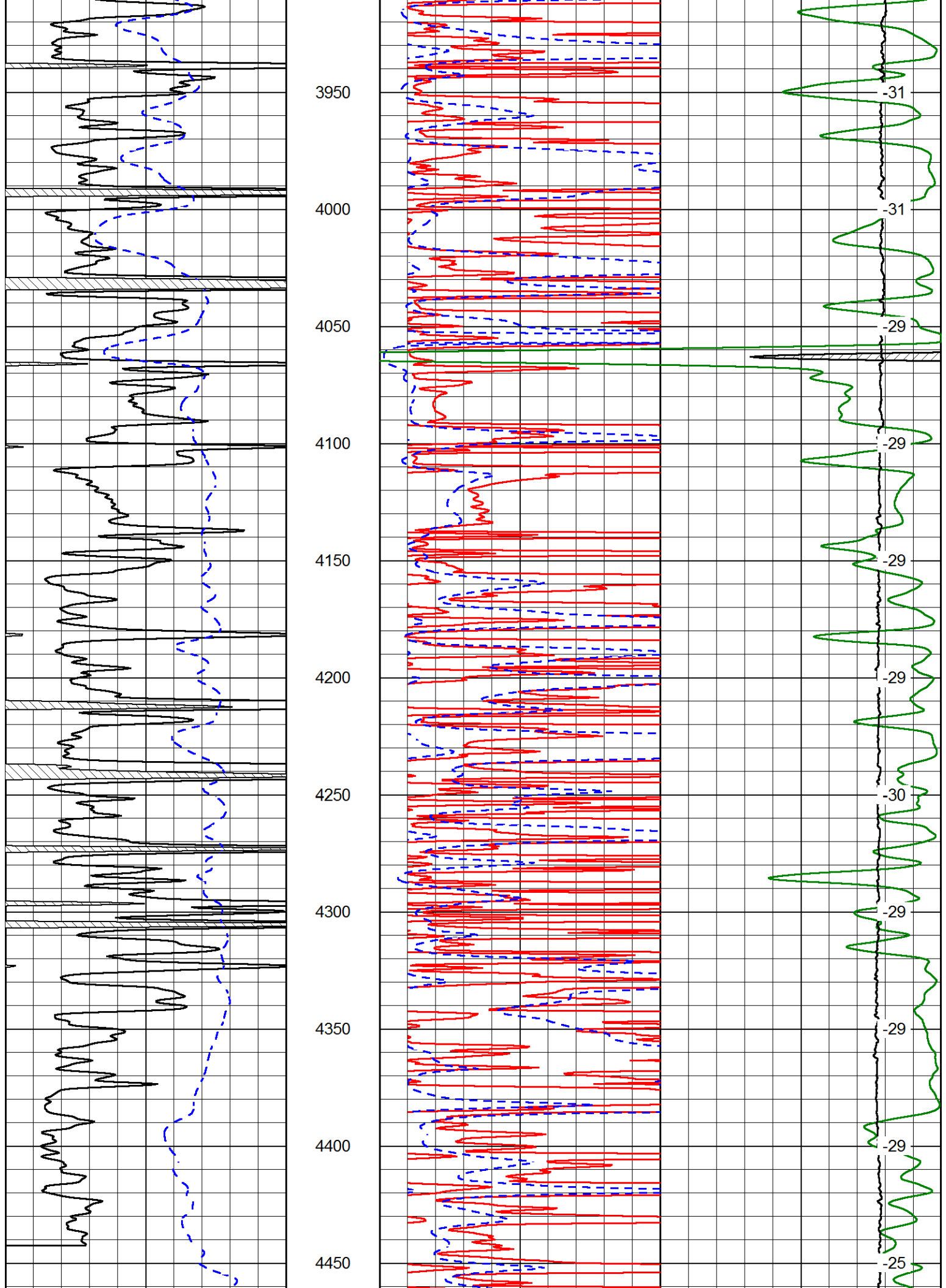
-31

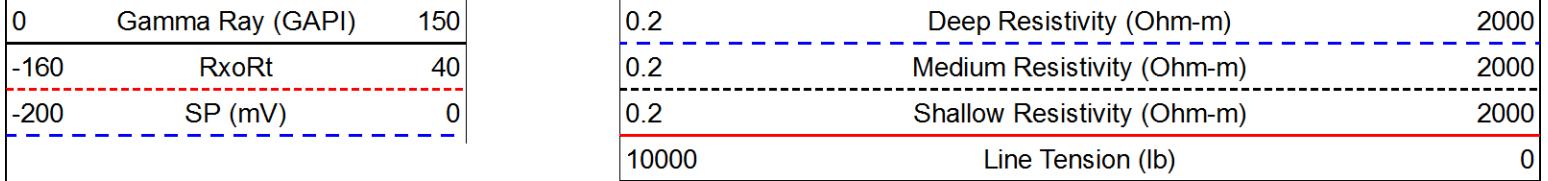
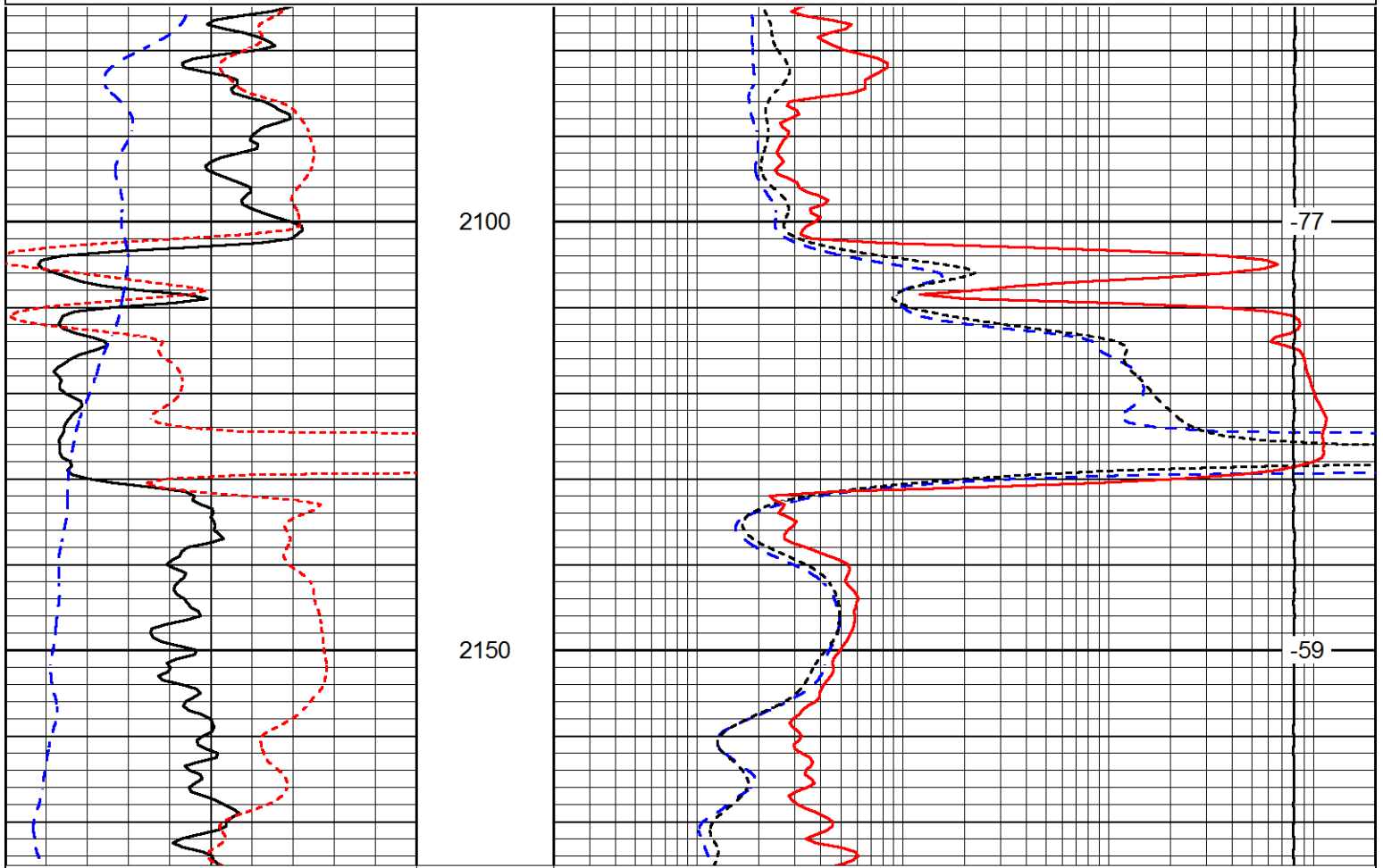
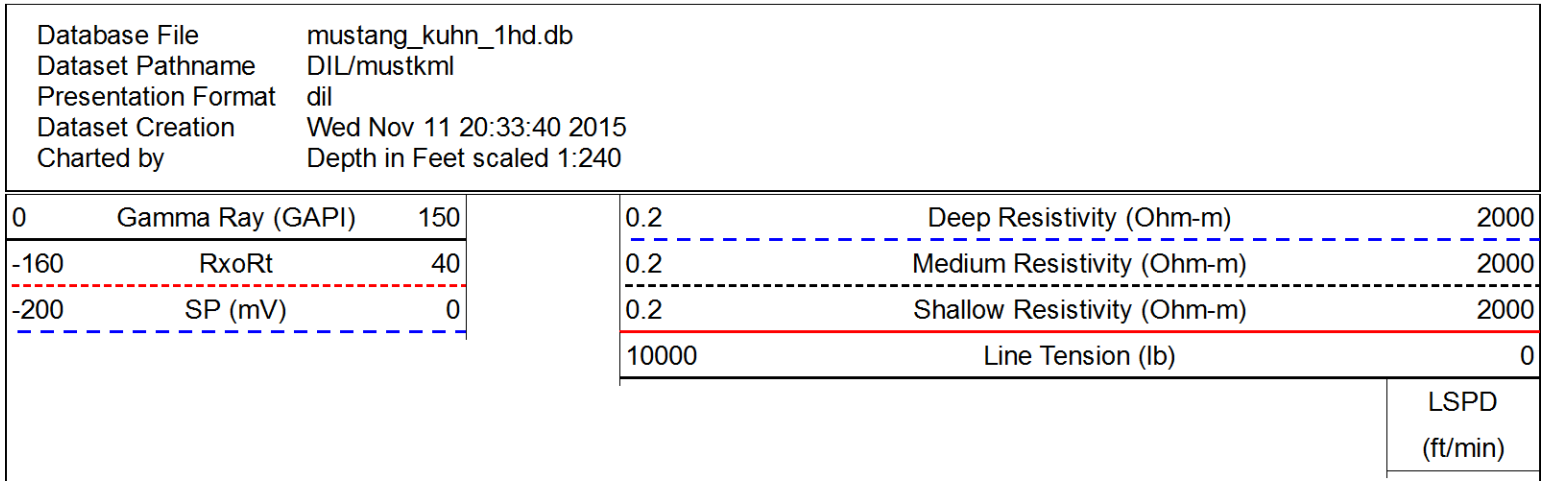
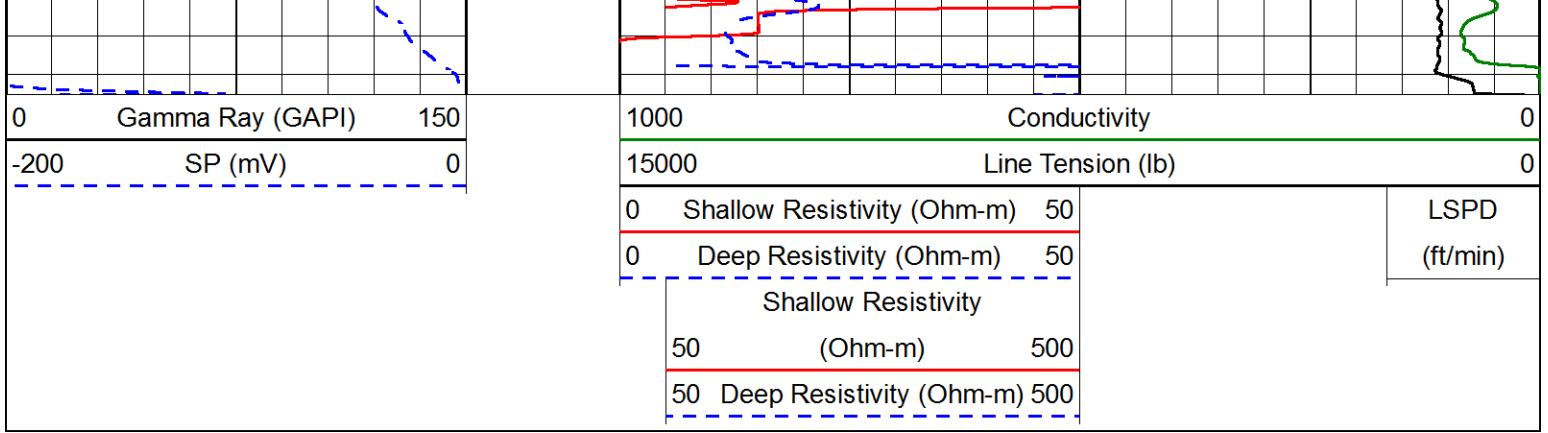
3850

-31

3900

-30

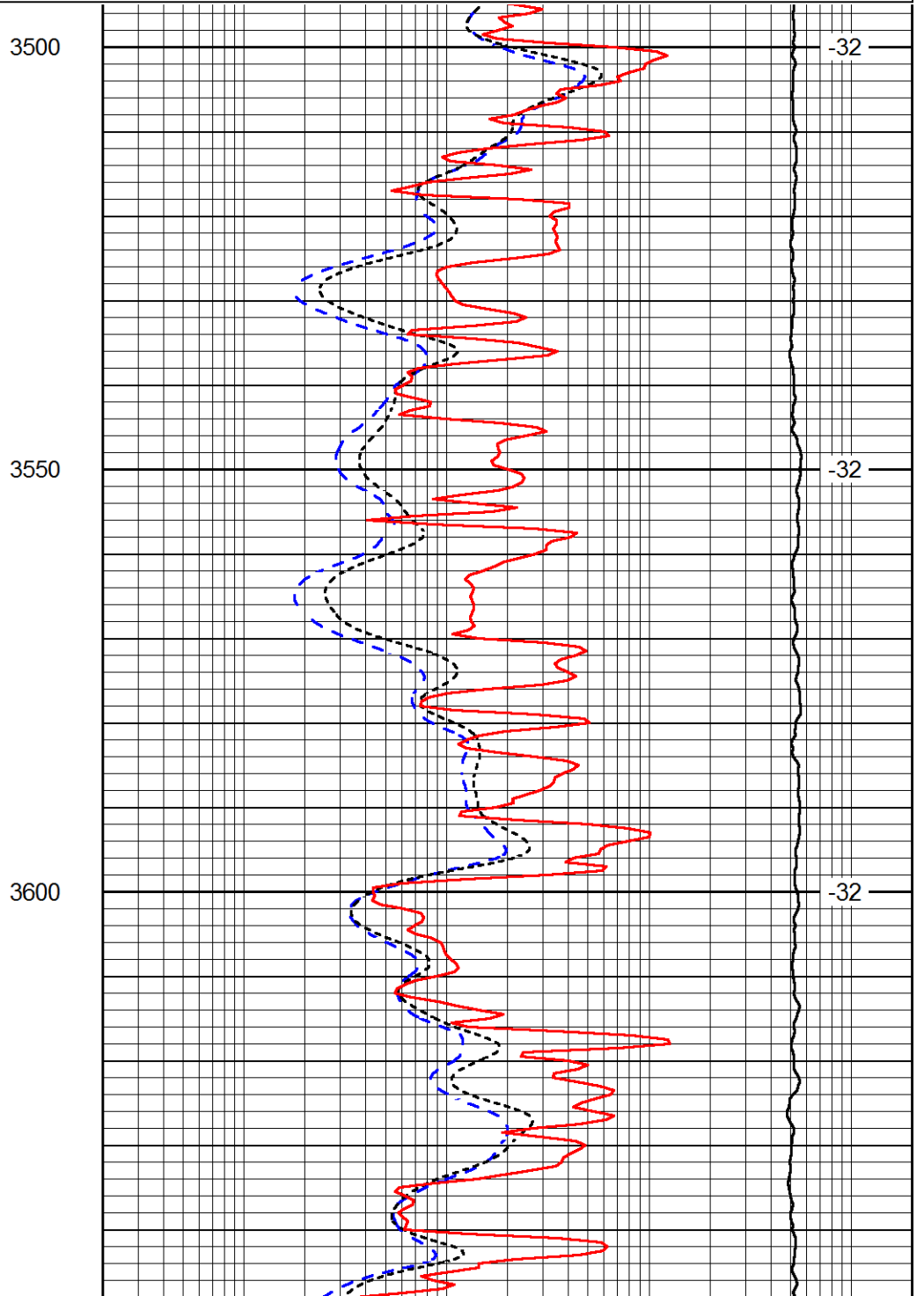
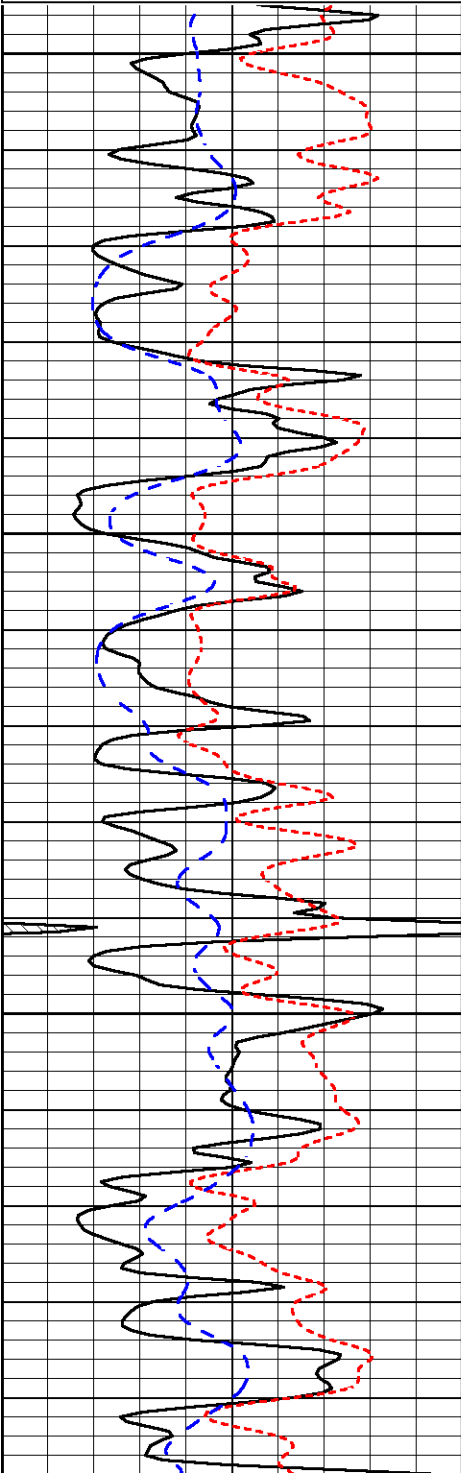




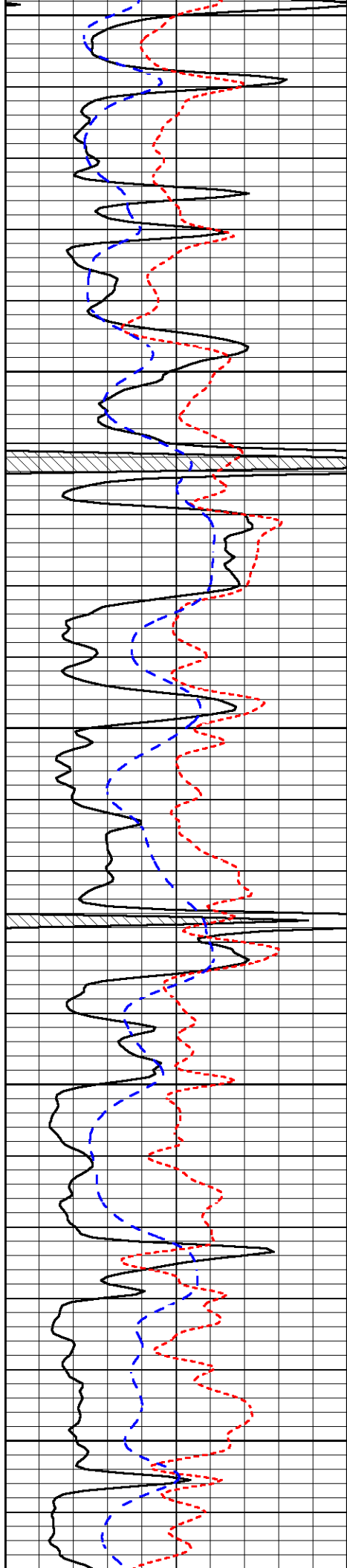
Database File mustang_kuhn_1hd.db
 Dataset Pathname DIL/mustkml
 Presentation Format dil
 Dataset Creation Wed Nov 11 20:33:40 2015
 Charted by Depth in Feet scaled 1:240

0	Gamma Ray (GAPI)	150
-160	RxoRt	40
-200	SP (mV)	0

0.2	Deep Resistivity (Ohm-m)	2000
0.2	Medium Resistivity (Ohm-m)	2000
0.2	Shallow Resistivity (Ohm-m)	2000
10000	Line Tension (lb)	0



-32
-32
-32



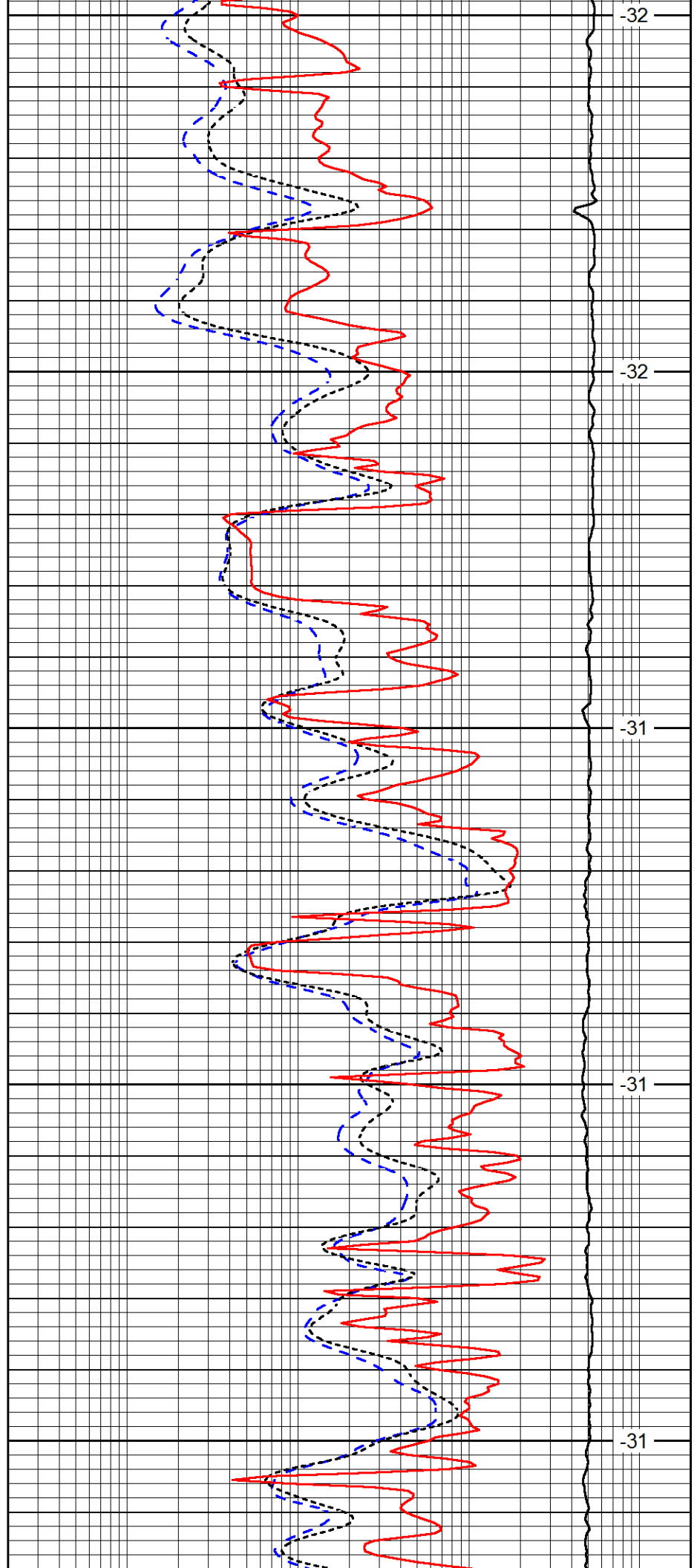
3650

3700

3750

3800

3850



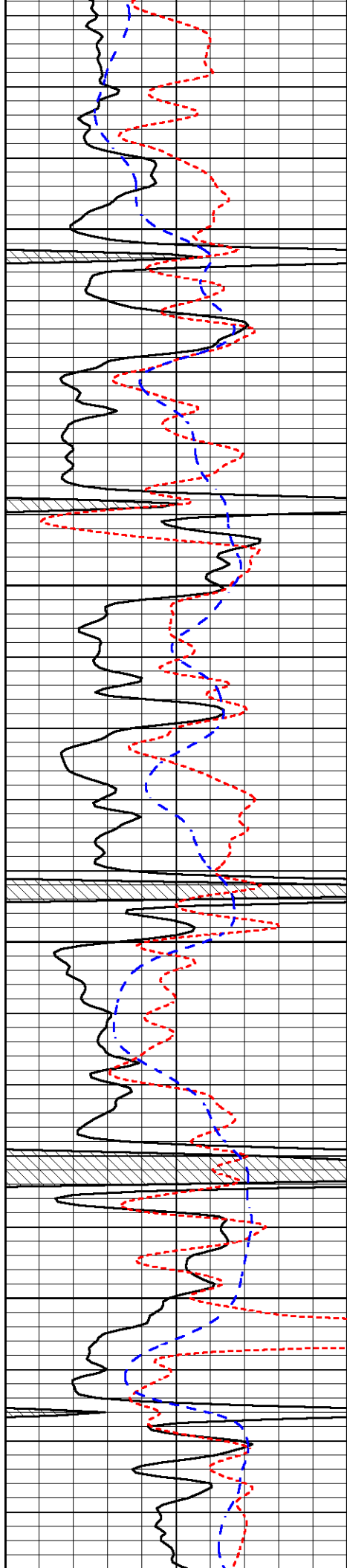
-32

-32

-31

-31

-31

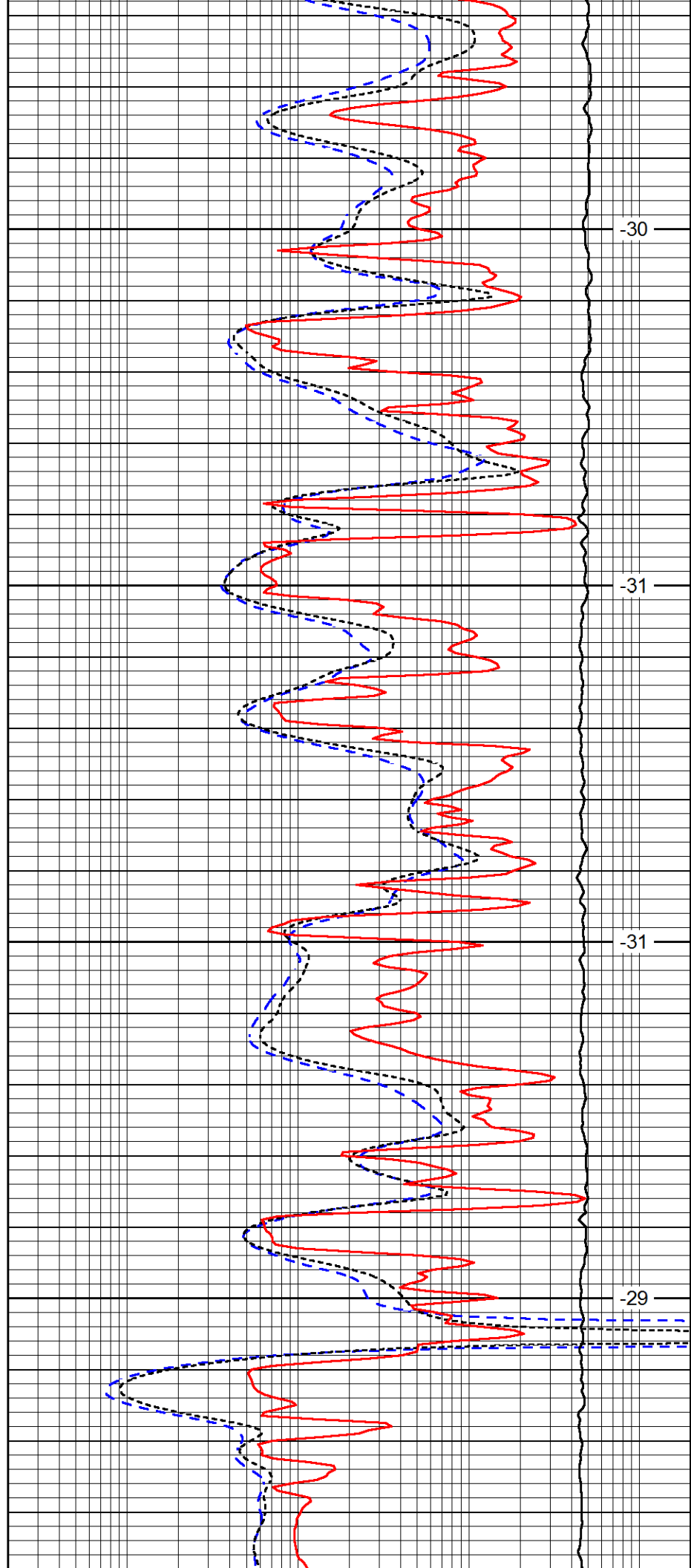


3900

3950

4000

4050

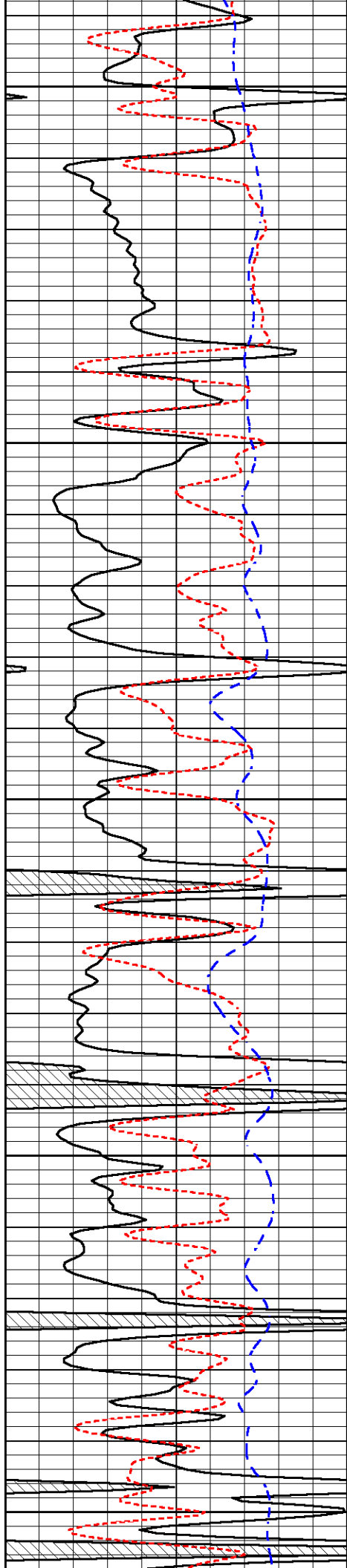


-30

-31

-31

-29



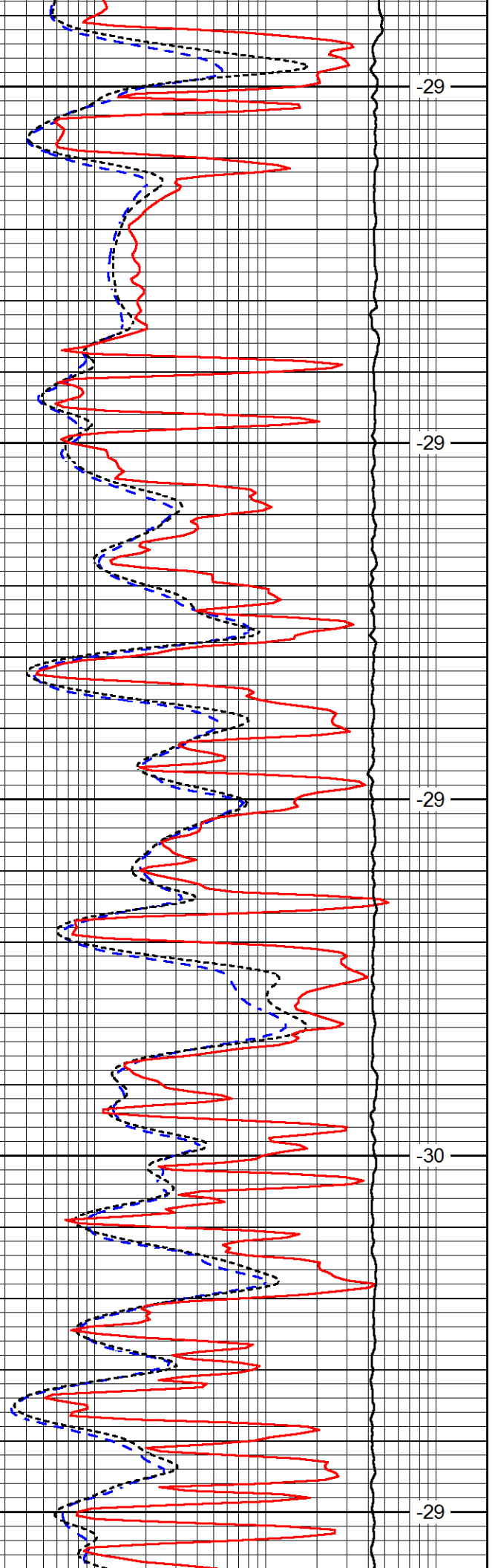
4100

4150

4200

4250

4300



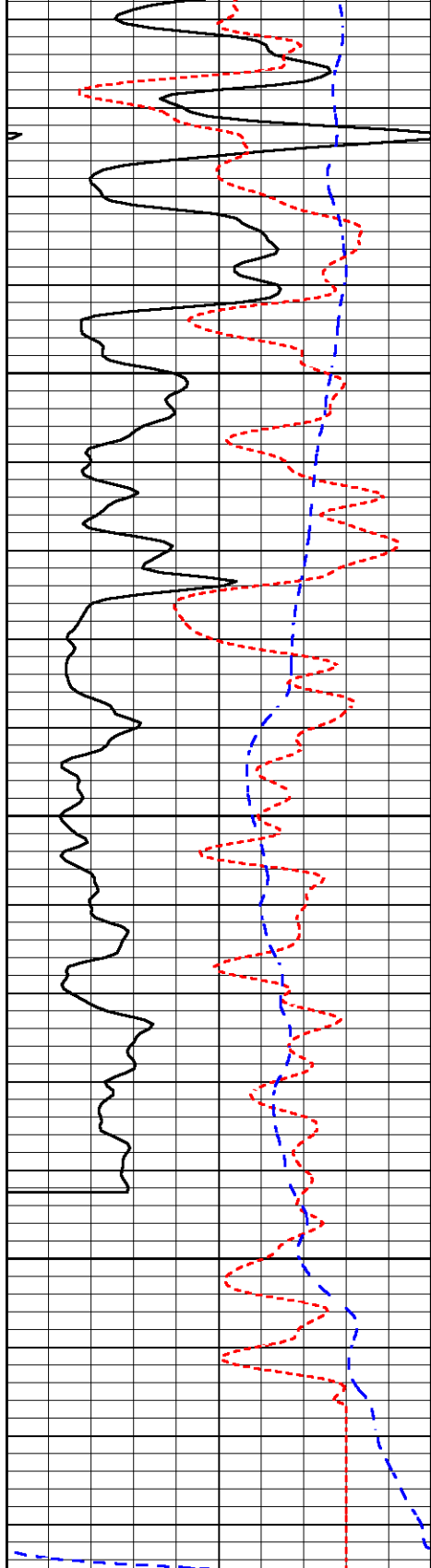
-29

-29

-29

-30

-29

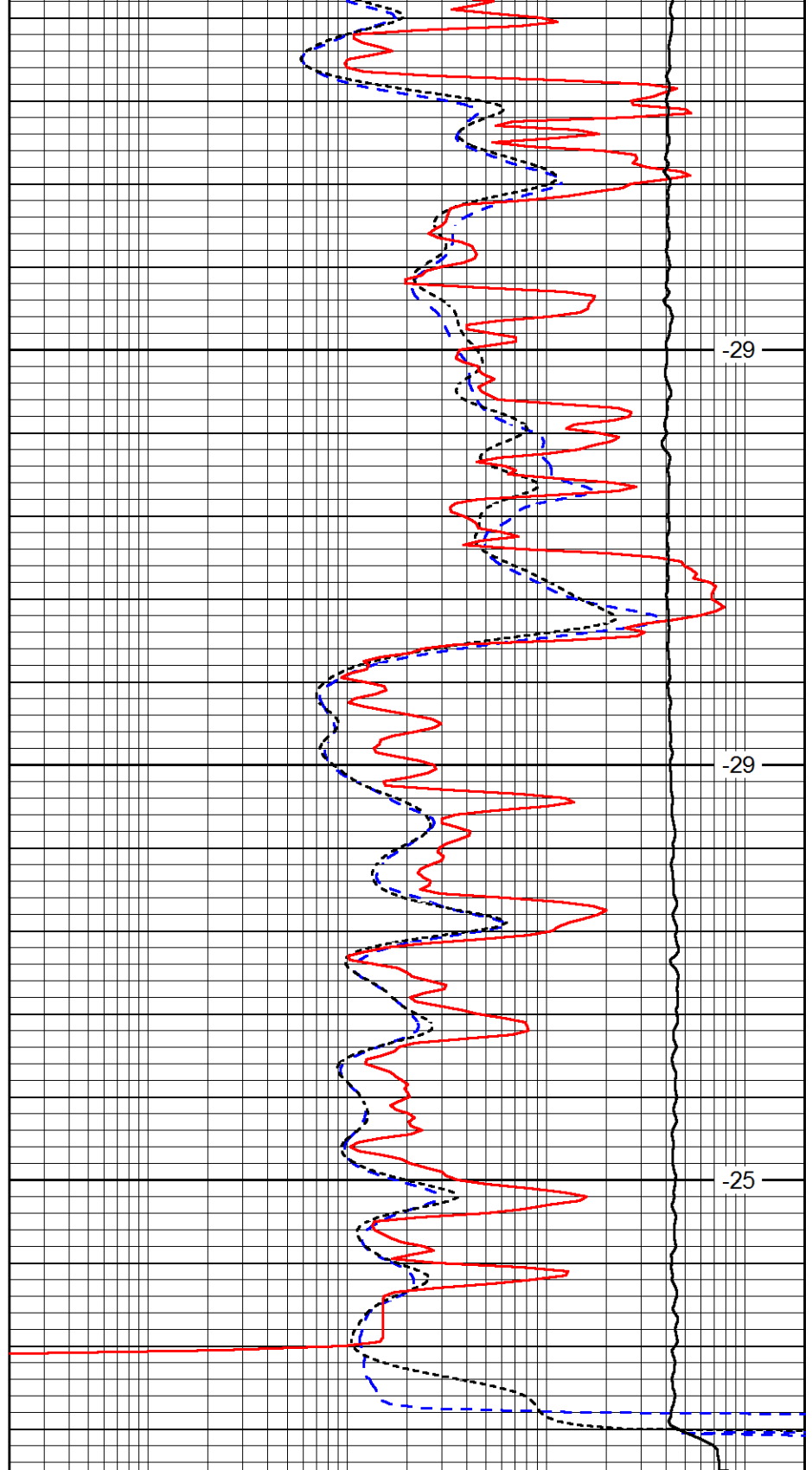


4350

4400

4450

0	Gamma Ray (GAPI)	150
-160	RxoRt	40
-200	SP (mV)	0



-29

-29

-25

0.2	Deep Resistivity (Ohm-m)	2000
0.2	Medium Resistivity (Ohm-m)	2000
0.2	Shallow Resistivity (Ohm-m)	2000
10000	Line Tension (lb)	0

LSPD
(ft/min)