

CEMENT BOND LOG

Company **YOUNGER ENERGY COMPANY**
 Well **SHARTZ #2-34**
 Field **HURRAY**
 County **PAWNEE**
 State **KANSAS**

Company **YOUNGER ENERGY COMPANY**
 Well **SHARTZ #2-34**
 Field **HURRAY**
 County **PAWNEE** State **KANSAS**

Location **1450' FSL & 1100' FEL**
 SEC. **34** TWP. **21S** RGE. **15W**
 Permanent Datum **GROUND LEVEL Elevation 1970**
 Log Measured From **KELLY BUSHING 8' AGL**
 Drilling Measured From **KELLY BUSHING**
 Other Services **PERF**
 Elevation **K.B. 1978
D.F. 1976
G.L. 1970**

Date	12-17-2015						
Run Number	ONE						
Depth Driller	4000						
Depth Logger	3966						
Bottom Logged Interval	3965						
Top Log Interval	2300						
Open Hole Size	WATER						
Type Fluid	WATER						
Density / Viscosity							
Max. Recorded Temp.							
Estimated Cement Top	2526						
Time Well Ready							
Time Logger on Bottom							
Equipment Number	#53						
Location	GREAT BEND						
Recorded By	LANCE GREGG						
Witnessed By	MR. BROWNING						
Borehole Record		Tubing Record					
Run Number	Bit	From	To	Size	Weight	From	To
Casing Record	Size			Wgt/Ft	Top		Bottom
Surface String	8.625			23#	0		945
Prot. String							
Production String	5.5			17#	0		3999
Liner							

<<< Fold Here >>>

All interpretations are opinions based on inferences from electrical or other measurements and we cannot and do not guarantee the accuracy or correctness of any interpretation, and we shall not, except in the case of gross or willful negligence on our part, be liable or responsible for any loss, costs, damages, or expenses incurred or sustained by anyone resulting from any interpretation made by any of our officers, agents or employees. These interpretations are also subject to our general terms and conditions set out in our current Price Schedule.

Comments

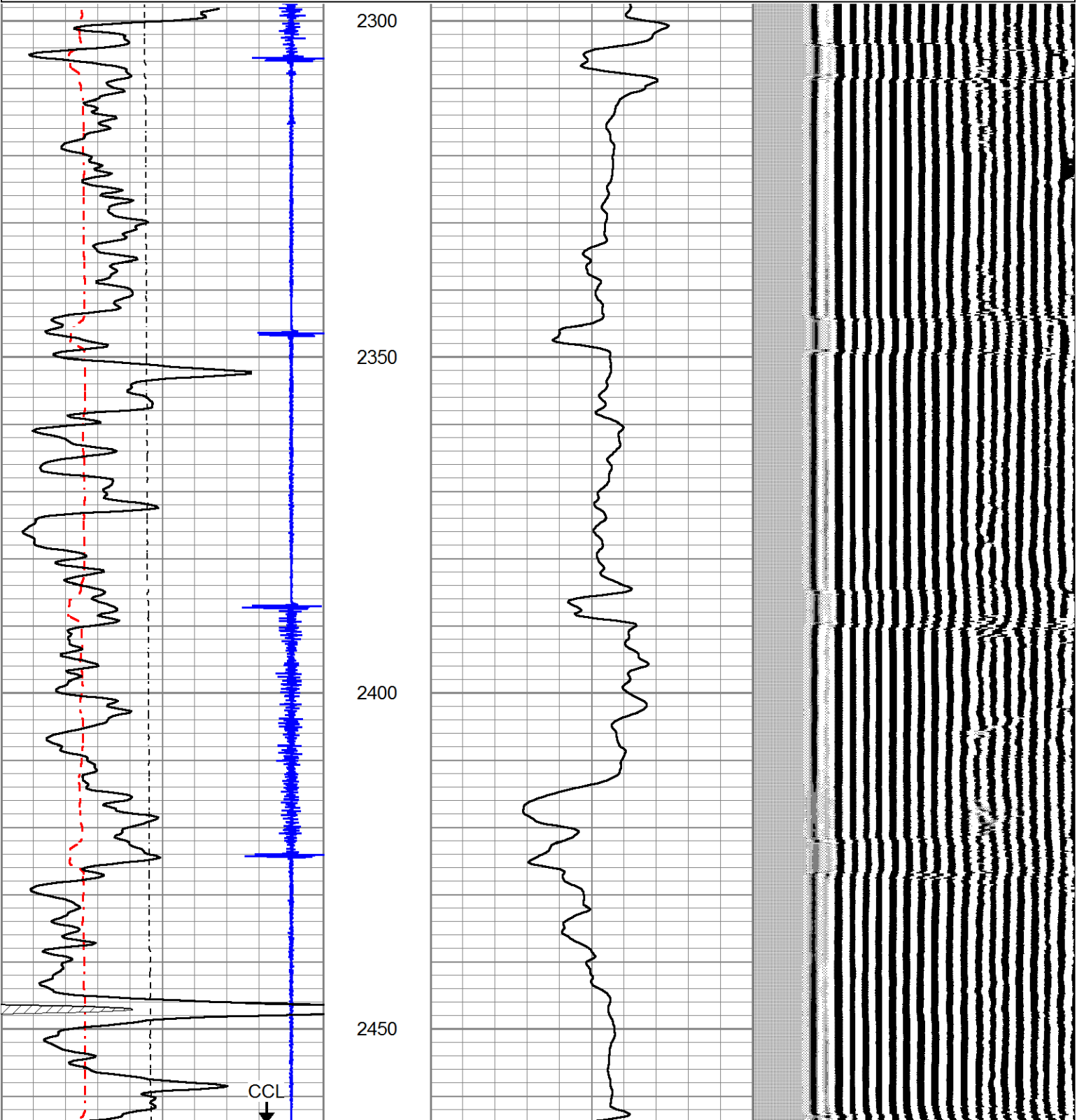
THANK YOU FOR USING LOG TECH OF KANSAS

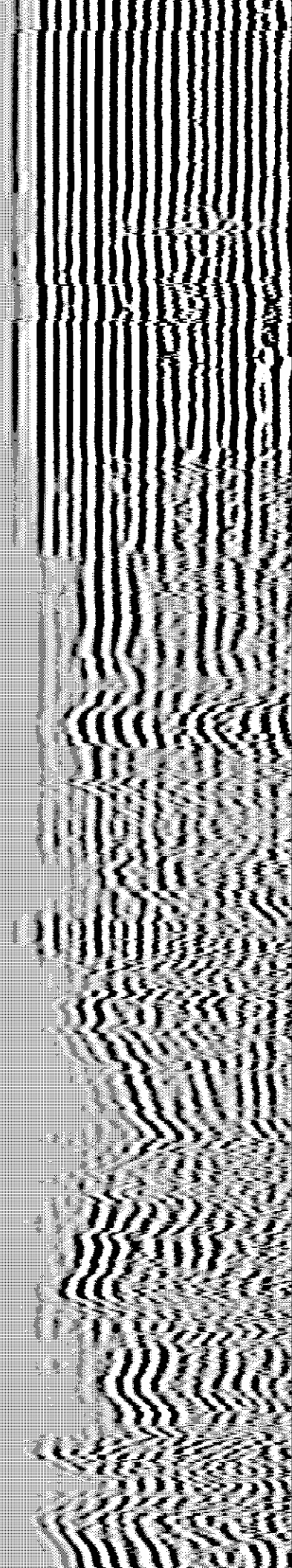
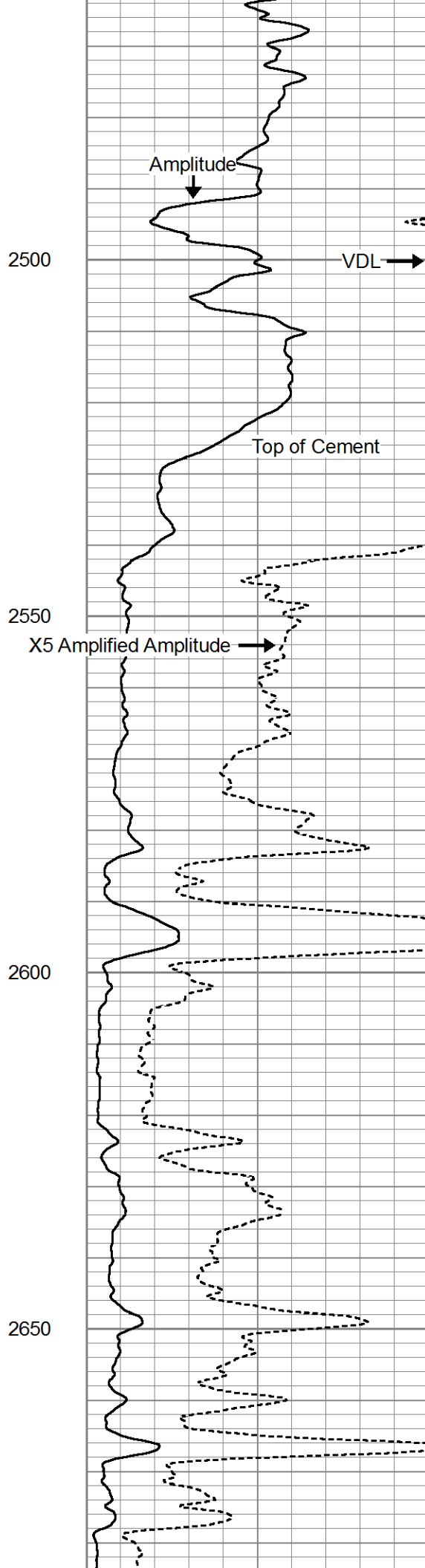
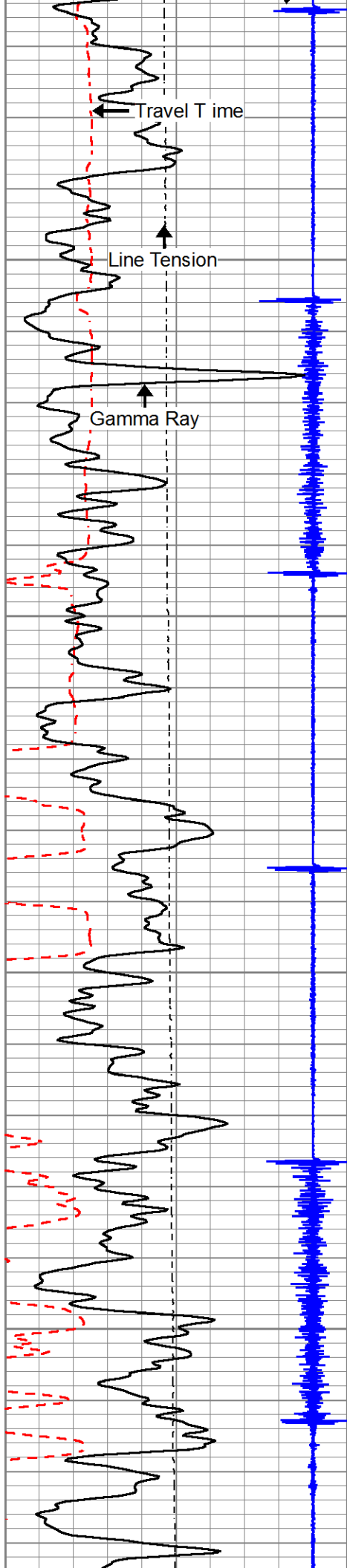
DIRECTIONS
 LARNED, KS EAST ON HWY 19 TO RD 30
 1 MILE NORTH, 1/4 WEST
 NORTH INTO

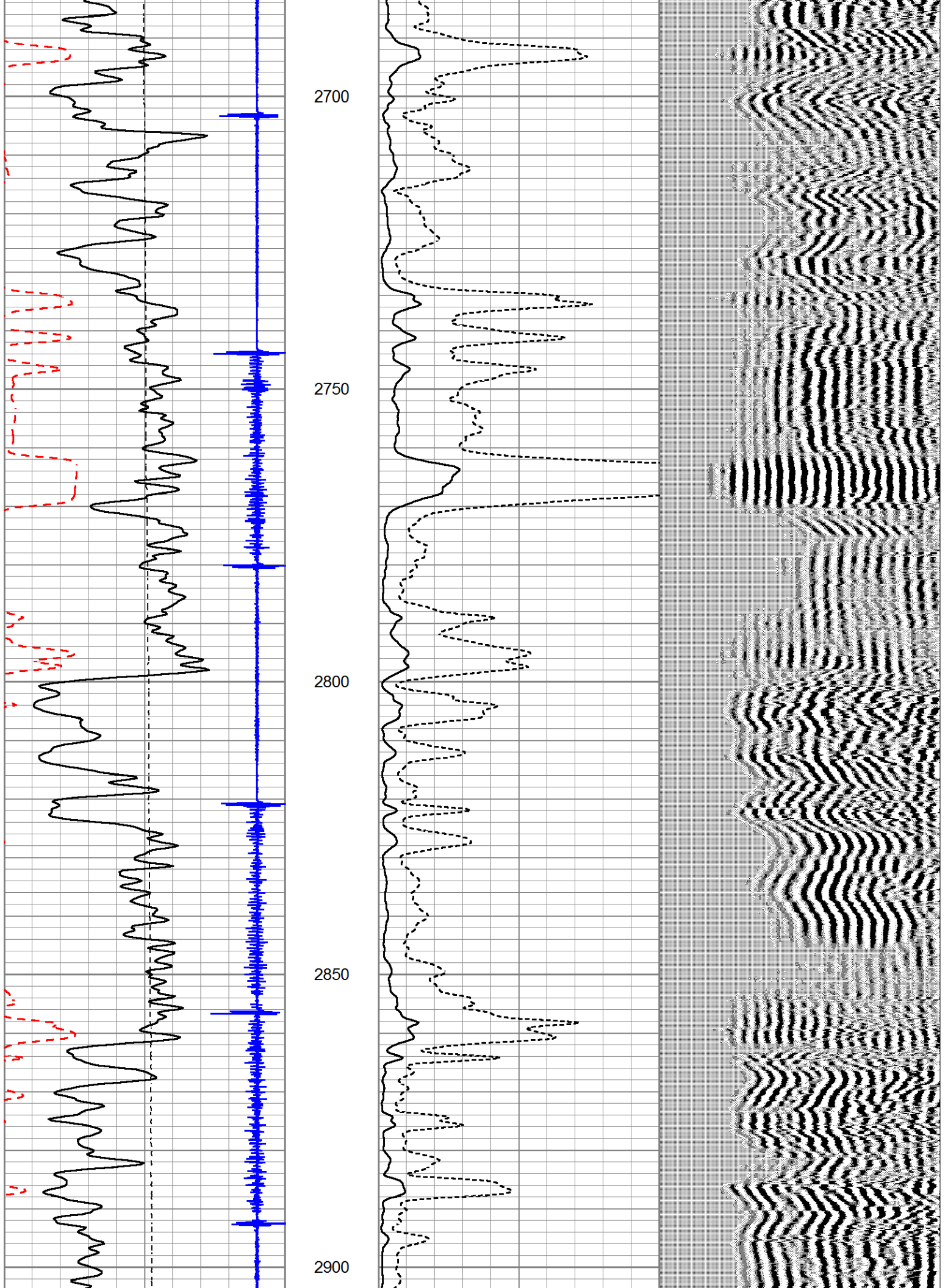
Database File shartz2-34.db
 Dataset Pathname pass3
 Presentation Format scbl_dr
 Dataset Creation Thu Dec 17 08:21:11 2015
 Charted by Depth in Feet scaled 1:240

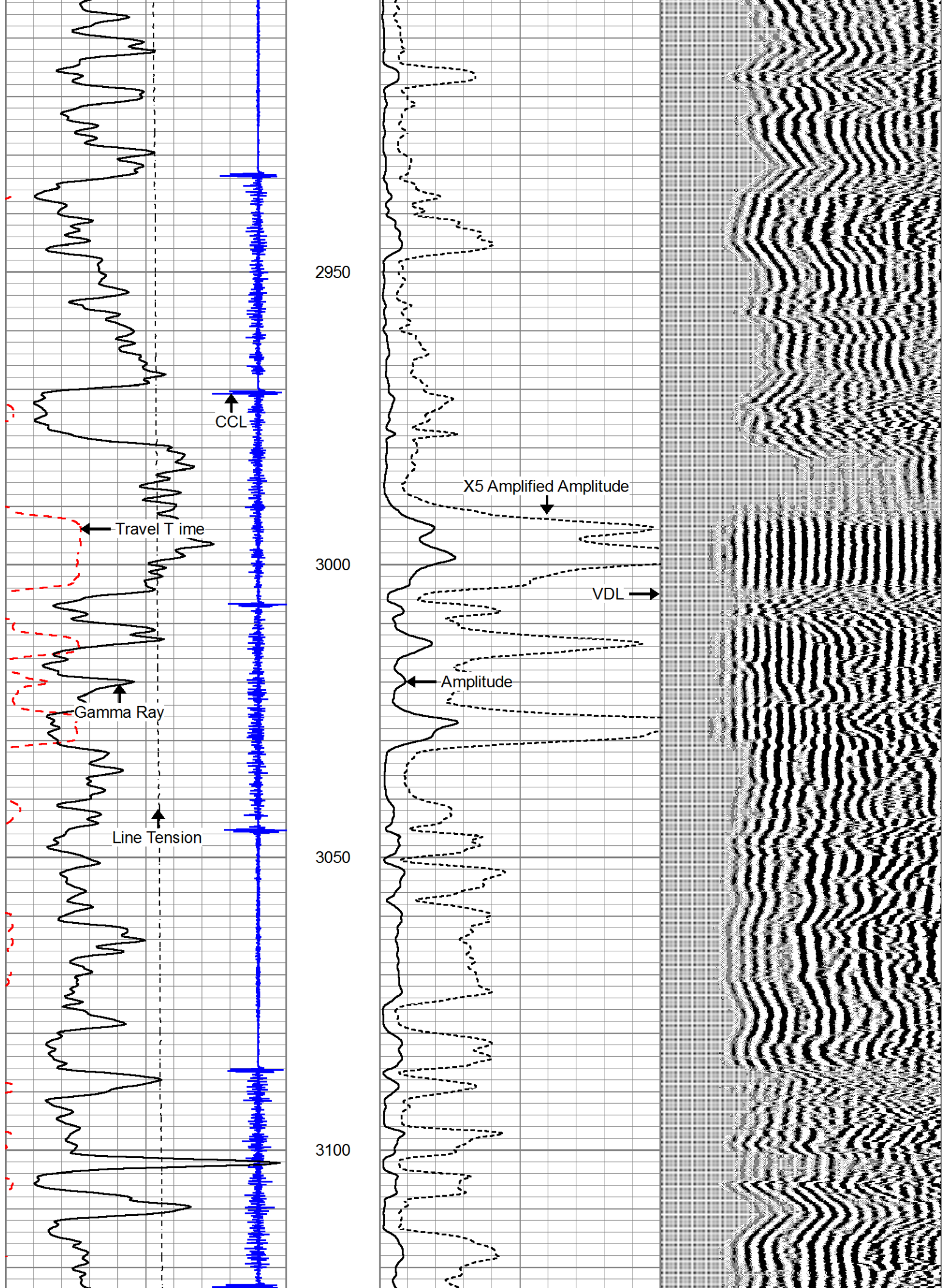
320	Travel Time (usec)	120
-9	Collar Locator	1
0	LTEN (lb)	1500
0	Gamma Ray (GAPI)	150
150	Gamma Ray (GAPI)	300
300	Gamma Ray (GAPI)	450

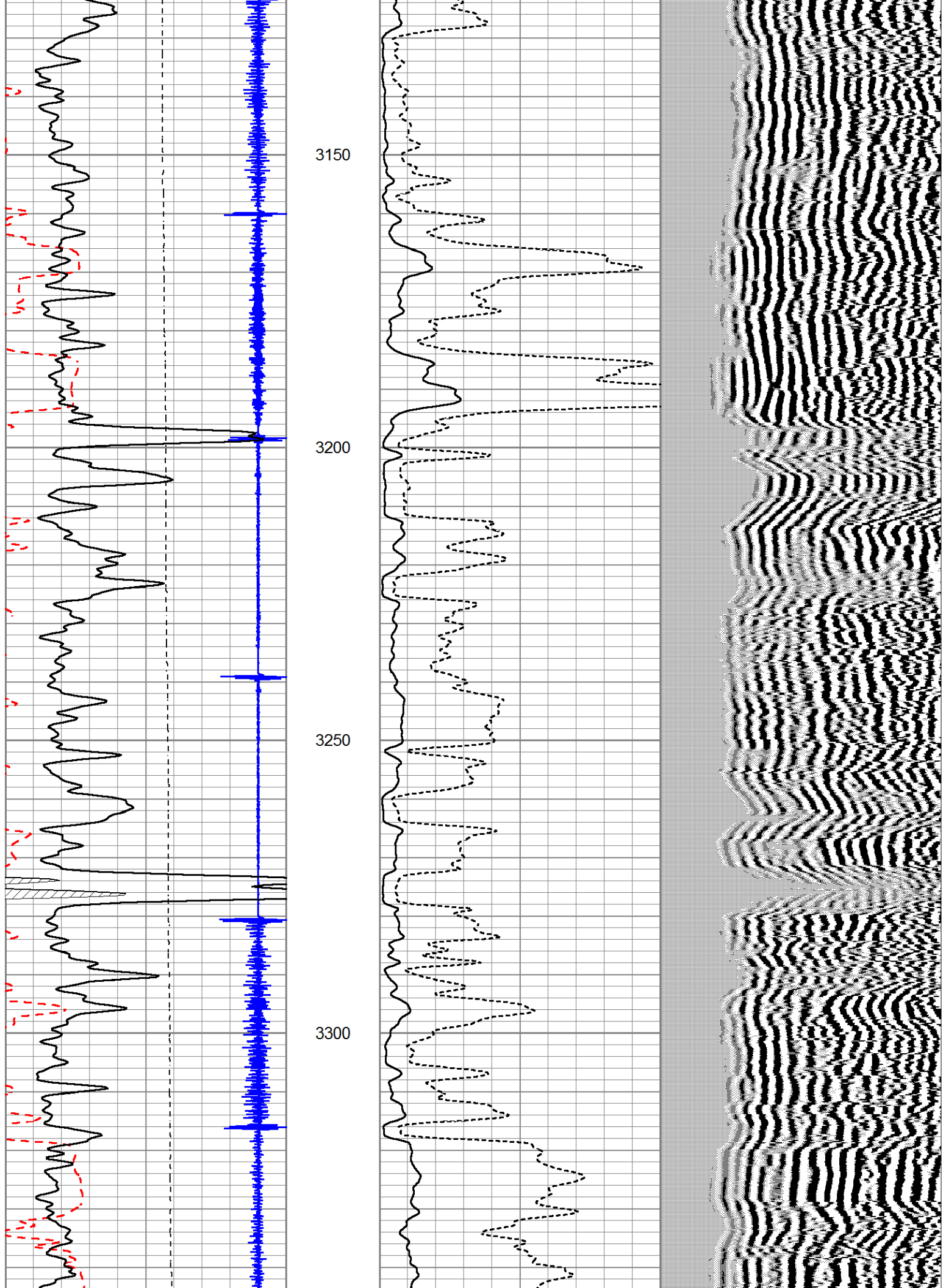
0 Amplitude (mV) 100 200 VDL 1200

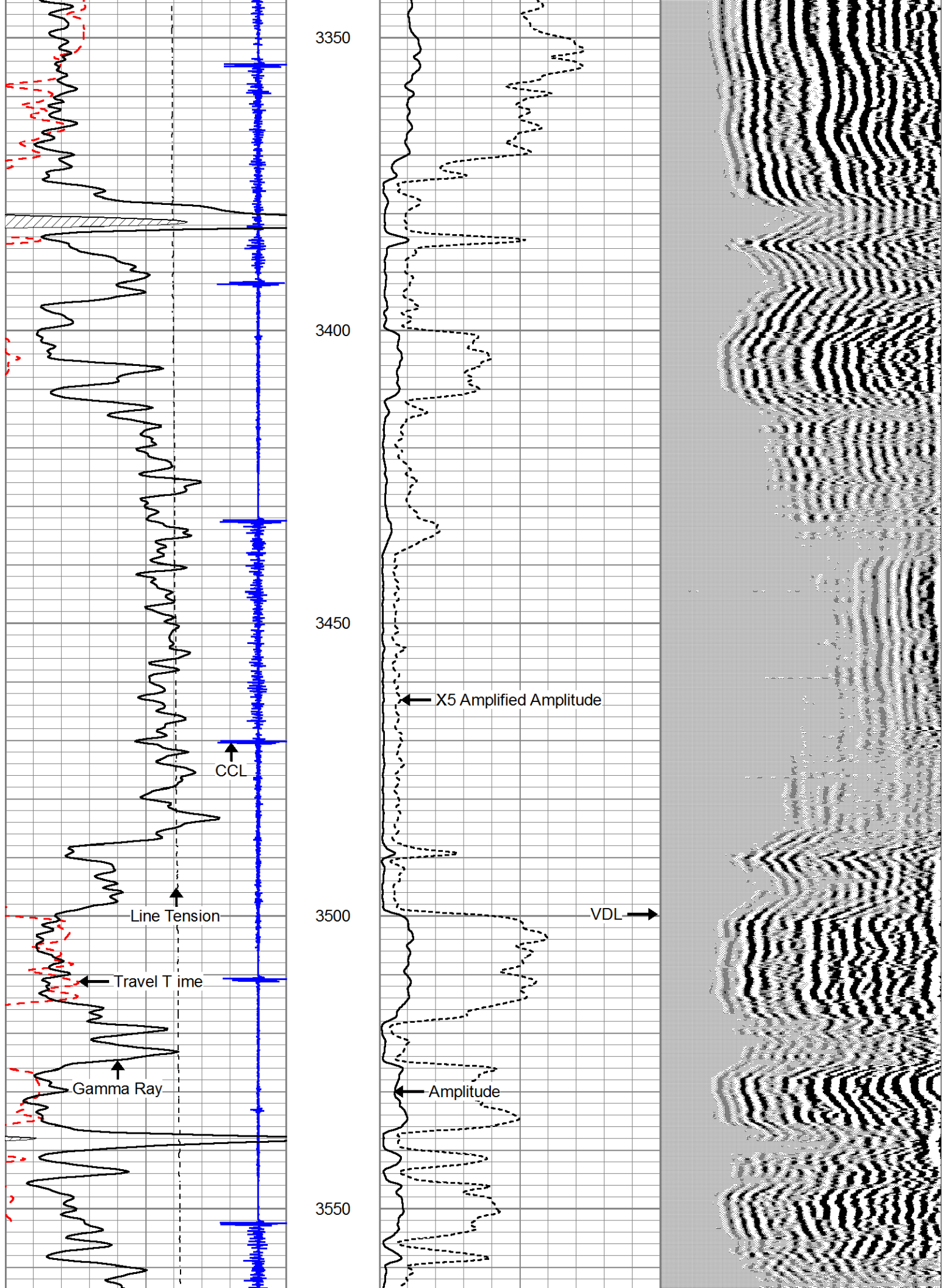


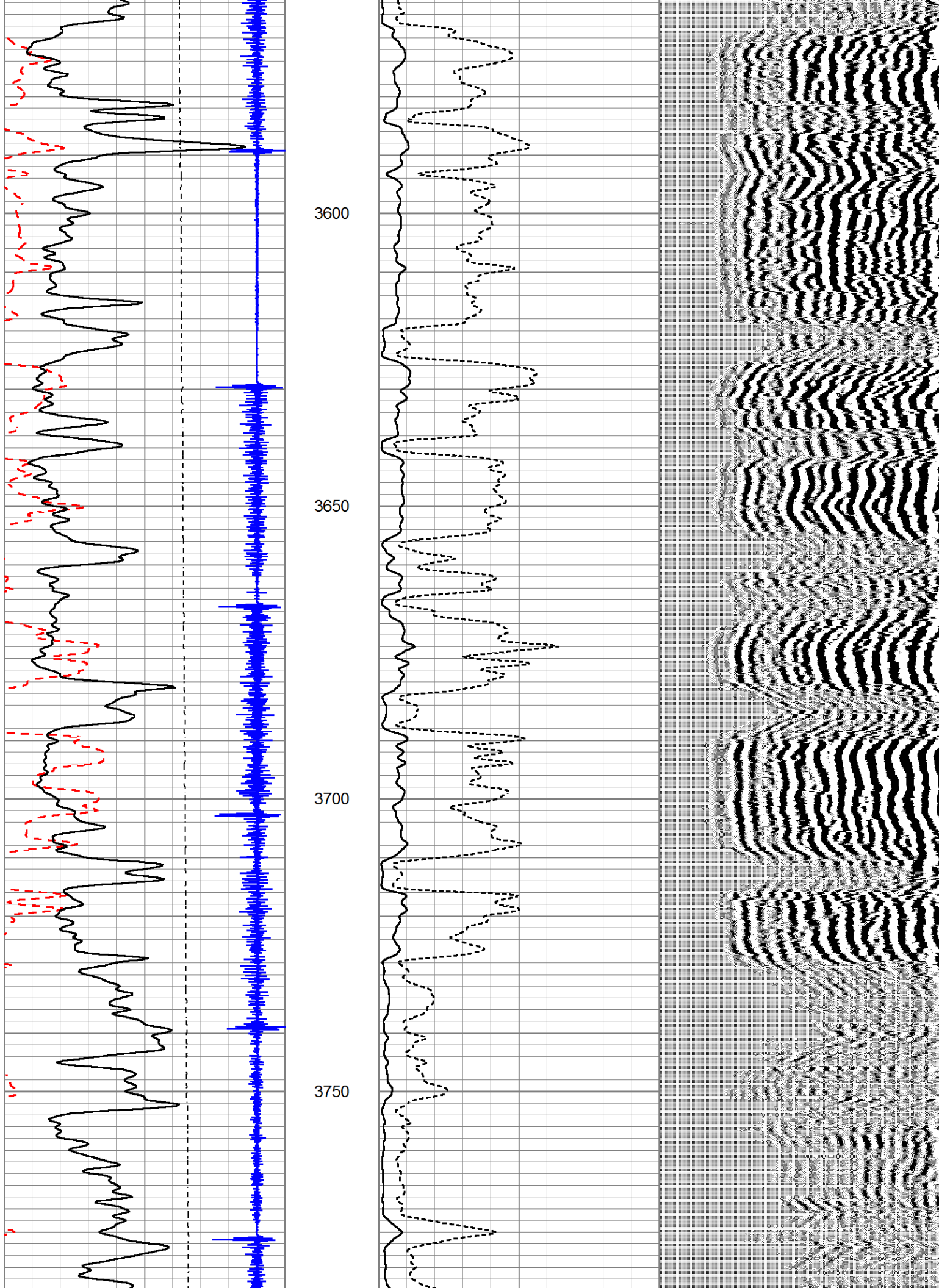


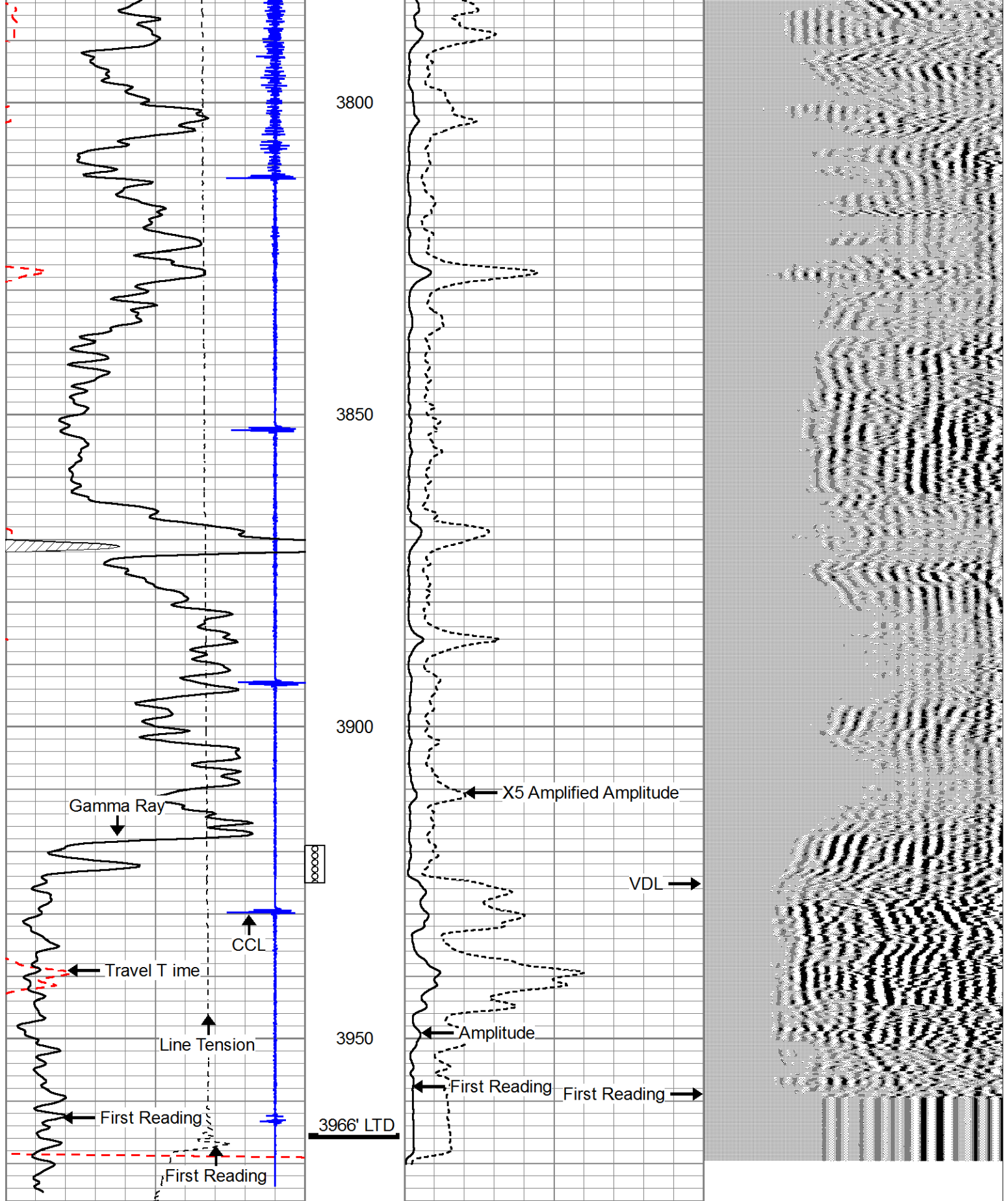












320	Travel Time (usec)	120
-9	Collar Locator	1
0	LTEN (lb)	1500
0	Gamma Ray (GAPI)	150
150	Gamma Ray (GAPI)	300
300	Gamma Ray (GAPI)	450

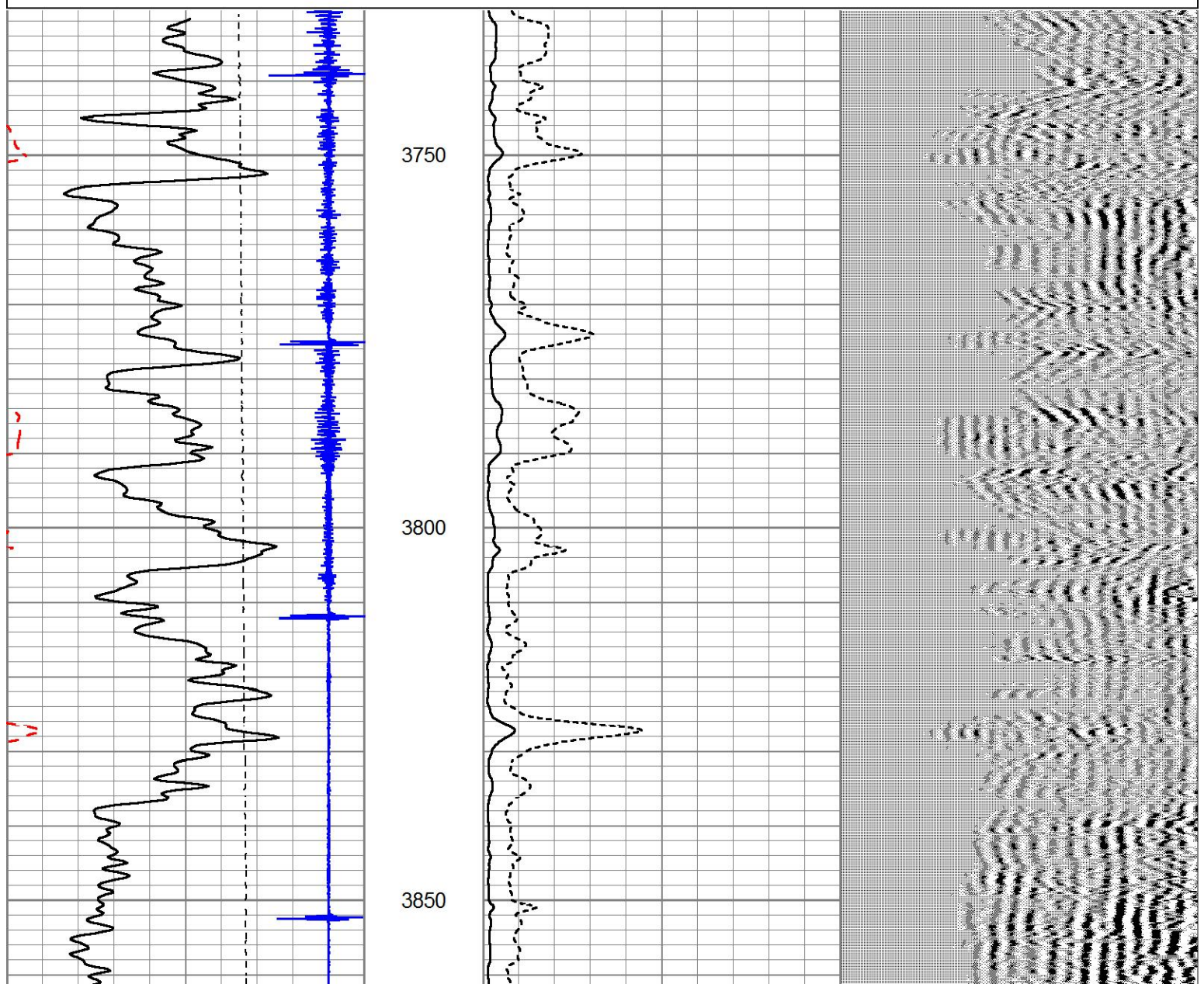


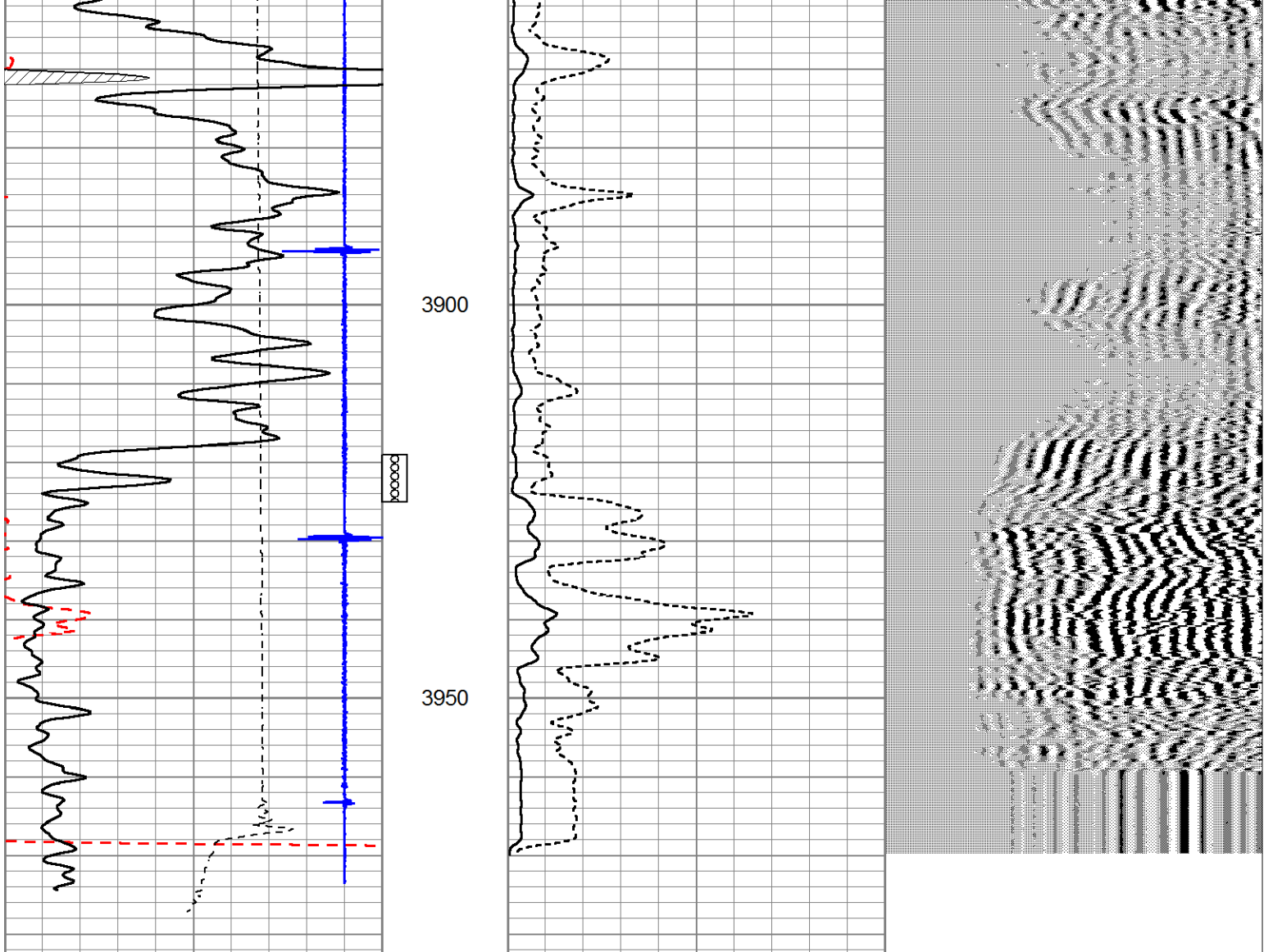
REPEAT SECTION

Database File shartz2-34.db
 Dataset Pathname pass2
 Presentation Format scbl_dr
 Dataset Creation Thu Dec 17 08:12:02 2015
 Charted by Depth in Feet scaled 1:240

320	Travel Time (usec)	120
-9	Collar Locator	1
0	LTEN (lb)	1500
0	Gamma Ray (GAPI)	150
150	Gamma Ray (GAPI)	300
300	Gamma Ray (GAPI)	450

0 Amplitude (mV) 100 200 VDL 1200





320	Travel Time (usec)	120	0	Amplitude (mV)	100	200	VDL	1200
-9	Collar Locator	1						
0	LTEN (lb)	1500						
0	Gamma Ray (GAPI)	150						
150	Gamma Ray (GAPI)	300						
300	Gamma Ray (GAPI)	450						

Sensor	Offset (ft)	Schematic	Description	Length (ft)	O.D. (in)	Weight (lb)
			CHD-STNDRD Standard Cable Head	1.00	1.69	10.00

