



**Weatherford**

**CALIPER LOG**

COMPANY

**DAYSTAR PETROLEUM, INC.**

WELL

**DEUTSCHER B #1-2**

FIELD

**WILDCAT**

PROVINCE/COUNTY

**TREGO**

COUNTRY/STATE

**U.S.A. / KANSAS**

LOCATION

**1330' FSL & 395' FWL**

SEC 2

TWP 15S RGE 21W

Other Services

Latitude

Longitude

API Number

15-195-23003

Permanent Datum GL, Elevation 2123 feet

Log Measured From KB

Drilling Measured From KB @ 8 FEET

Date

14-MAR-2016

Run Number

ONE

Service Order

4558-145149224

Depth Driller

4040.00 feet

Depth Logger

4037.00 feet

First Reading

4005.00 feet

Last Reading

265.00 feet

Casing Driller

263.00 feet

Casing Logger

265.00 feet

Bit Size

7.875 inches

Hole Fluid Type

CHEMICAL

Density / Viscosity

9.10 lb/USg 48.00 CP

PH / Fluid Loss

9.30 6.40 ml/30Min

Sample Source

FLOWLINE

Rm @ Measured Temp

0.52 @ 75.0 ohm-m

Rmf @ Measured Temp

0.42 @ 75.0 ohm-m

Rmc @ Measured Temp

0.62 @ 75.0 ohm-m

Source Rmf / Rmc

CALC CALC

Rm @ BHT

0.38 @104.0 ohm-m

Time Since Circulation

4 HOURS

Max Recorded Temp

104.00 deg F

Equipment / Base

13096 OKC

Recorded By

ADAM SILL

Witnessed By

BRAD RINE

Elevations:  
KB 2131.00  
DF 2129.00  
GL 2123.00

**BOREHOLE RECORD**

Last Edited: 14-MAR-2016 13:16

Bit Size inches	Depth From feet	Depth To feet
7.875	263.00	4040.00

**CASING RECORD**

Type	Size inches	Depth From feet	Shoe Depth feet	Weight pounds/ft
SURFACE	8.625	0.00	263.00	23.00

**REMARKS**

- SOFTWARE ISSUE: WLS 15.03.5939.
- RUN ONE: MCG, MML, MDN, MPD, MFE, MSS, MAI RUN IN COMBINATION.
  - HARDWARE: DUAL BOWSPRING USED ON MDN.
  - 0.5 INCH STANDOFF USED ON MFE.
  - TWO 0.5 INCH STANDOFFS USED ON MSS.
  - 0.5 INCH STANDOFF USED ON MAI.
- 2.71 G/CC LIMESTONE DENSITY MATRIX USED TO CALCULATE POROSITY.
- BOREHOLE RUGOSITY, TIGHT PULLS, AND WASHOUTS WILL AFFECT DATA QUALITY.
- ALL INTERVALS LOGGED AND SCALED PER CUSTOMER'S REQUEST.
- TOTAL HOLE VOLUME FROM TD TO SURFACE CASING: 1670 CU.FT.
- ANNULAR HOLE VOLUME WITH 5.5 INCH PRODUCTION CASING FROM TD TO 3100 FEET: 176 CU.FT.

- RIG: WW DRILLING #12.

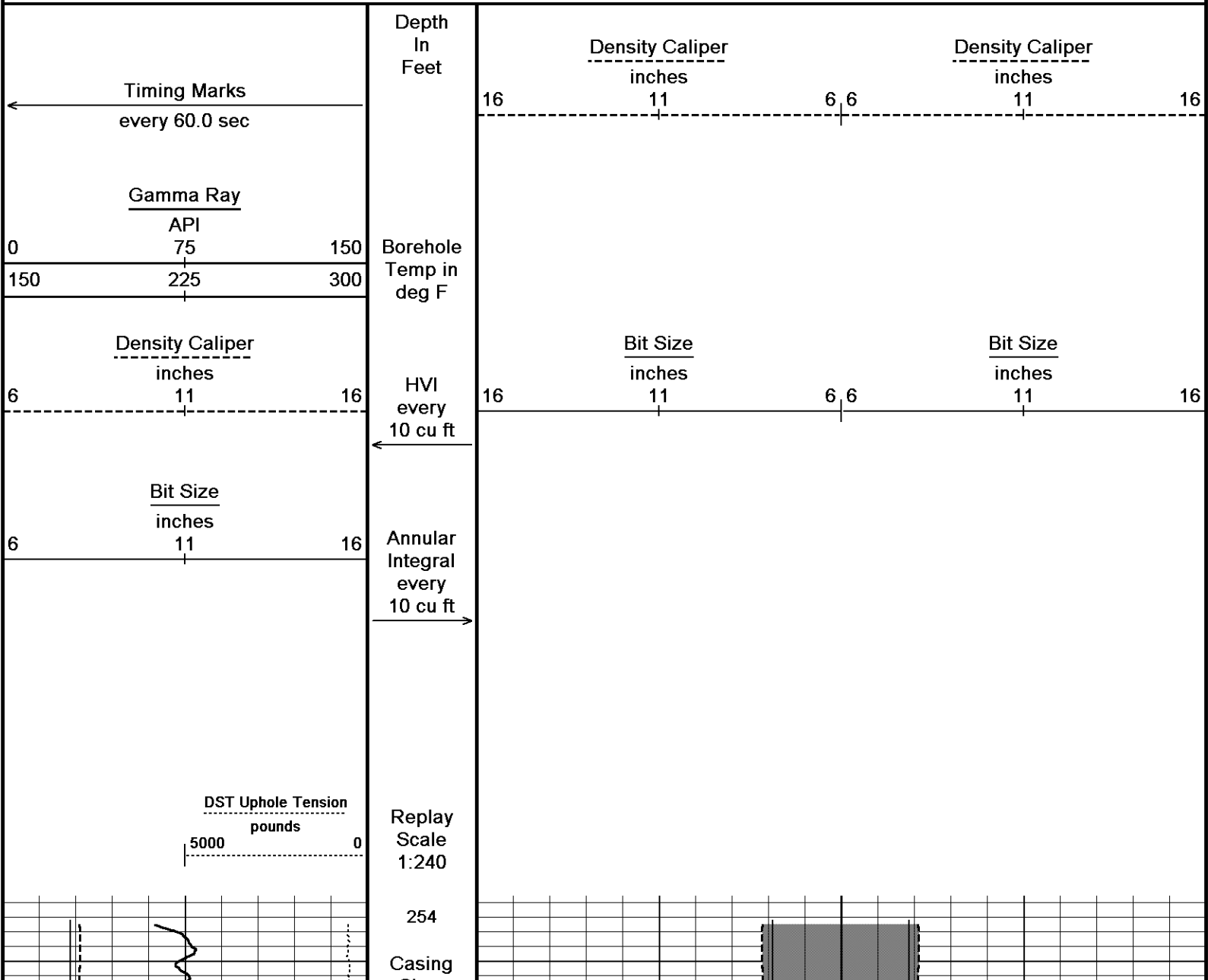
- ENGINEER: A. SILL.

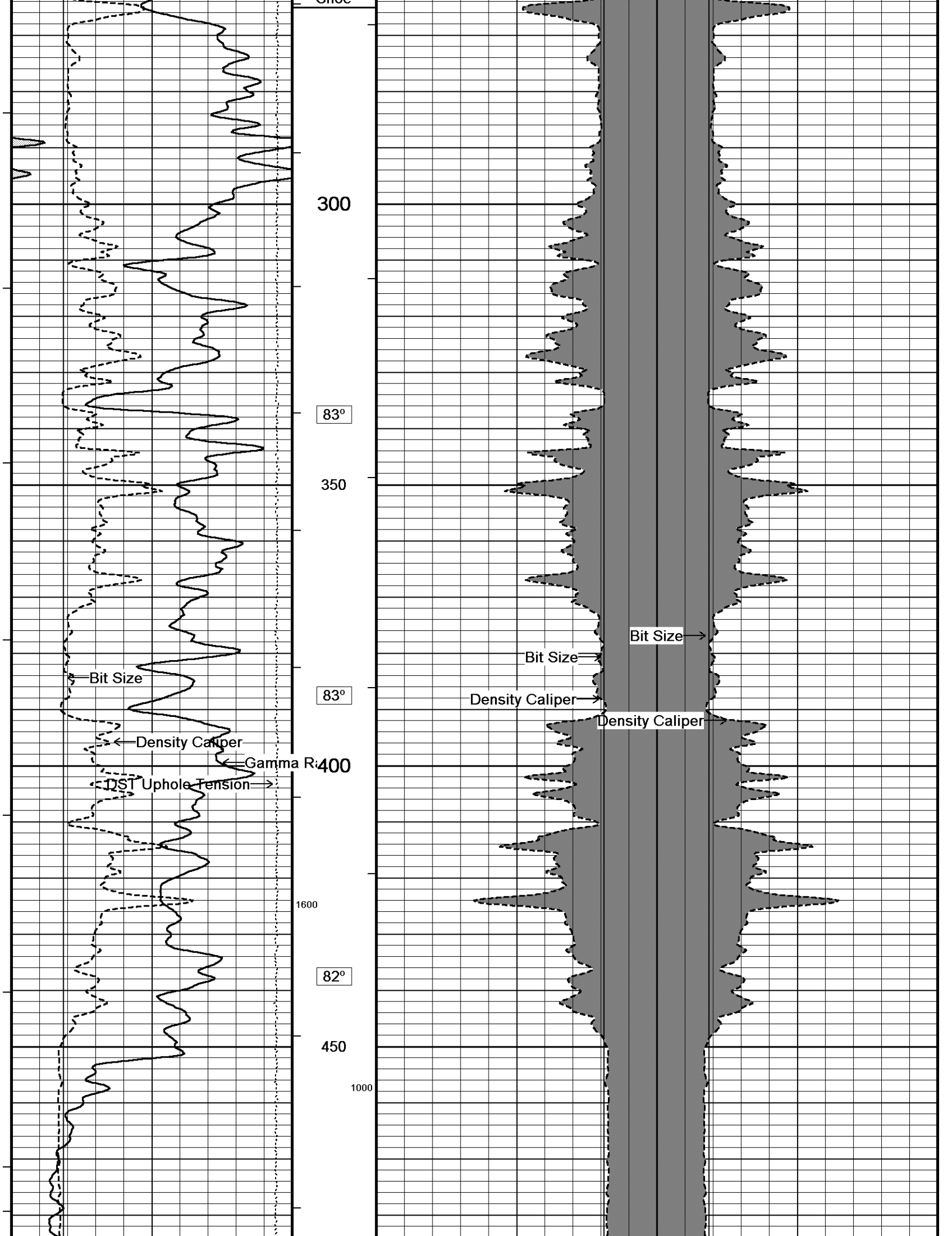
- OPERATOR: J. LaPOINT.

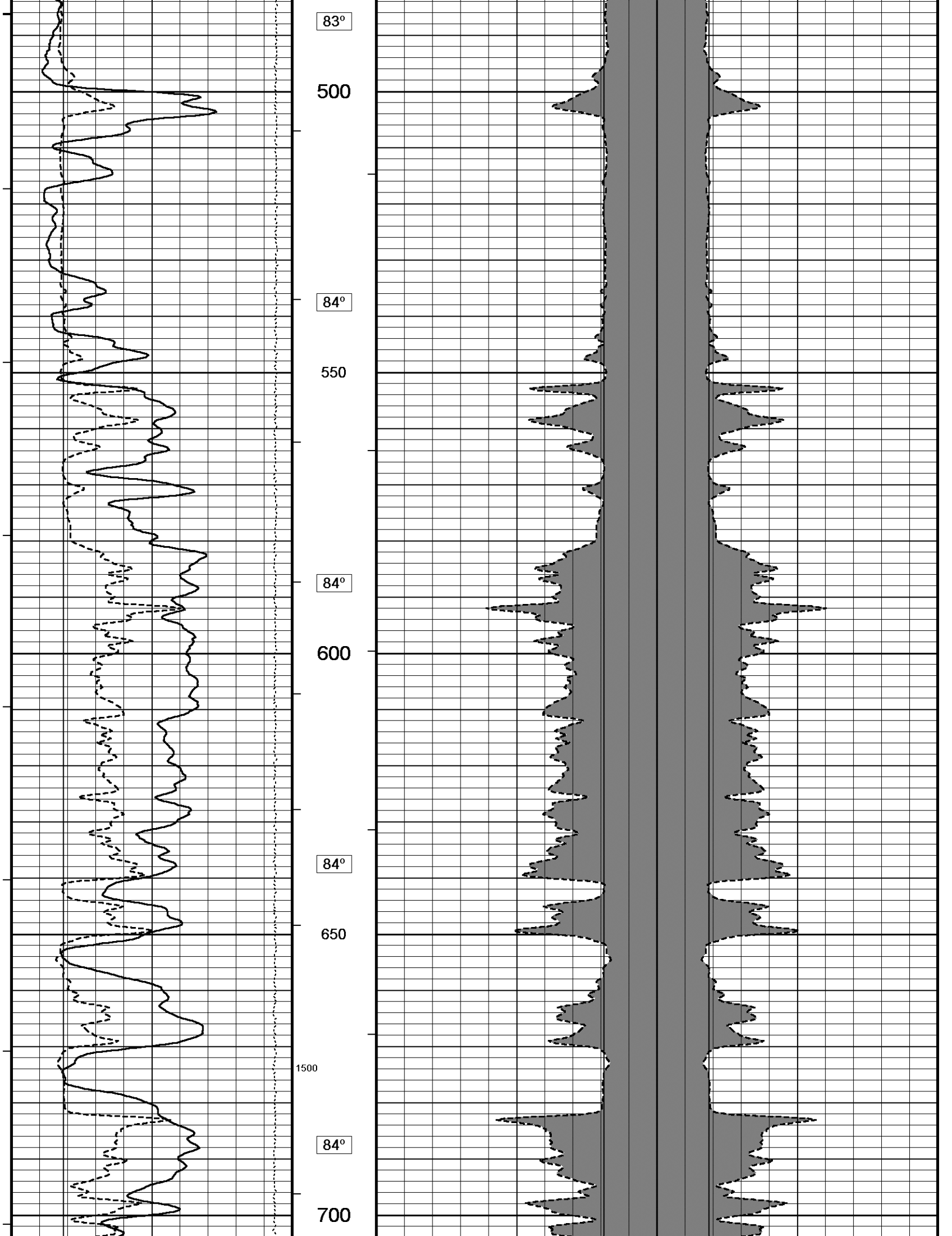
In interpreting, communicating or providing information and/or making recommendations, either written or oral, as to logs or test or other data, type or amount of material, or Work or other service to be furnished, or manner of performance, or in predicting results to be obtained, the Contractor will give the Company the benefit of the Contractor's best judgment based on its experience and will perform all such Work in a good and workmanlike manner. Any interpretation of test or other data, and any recommendation or reservoir description based upon such interpretations, are opinions based upon inferences from measurements and empirical relationships and assumptions, which inferences and assumptions are not infallible, and with respect to which professional engineers and analysts may differ. ACCORDINGLY ANY INTERPRETATION OR RECOMMENDATION RESULTING FROM THE SERVICES WILL BE AT THE SOLE RISK OF THE COMPANY, AND THE CONTRACTOR CANNOT AND DOES NOT WARRANT THE ACCURACY, CORRECTNESS OR COMPLETENESS OF ANY SUCH INTERPRETATION OR RECOMMENDATION, WHICH INTERPRETATIONS AND RECOMMENDATIONS SHOULD NOT, THEREFORE, UNDER ANY CIRCUMSTANCES BE RELIED UPON AS THE SOLE OR MAIN BASIS FOR ANY DRILLING, COMPLETION, WELL TREATMENT, PRODUCTION OR FINANCIAL DECISION, OR ANY PROCEDURE INVOLVING ANY RISK TO THE SAFETY OF ANY DRILLING ACTIVITY, DRILLING RIG OR ITS CREW OR ANY OTHER INDIVIDUAL. THE COMPANY HAS FULL RESPONSIBILITY FOR ALL DECISIONS CONCERNING THE SERVICES.

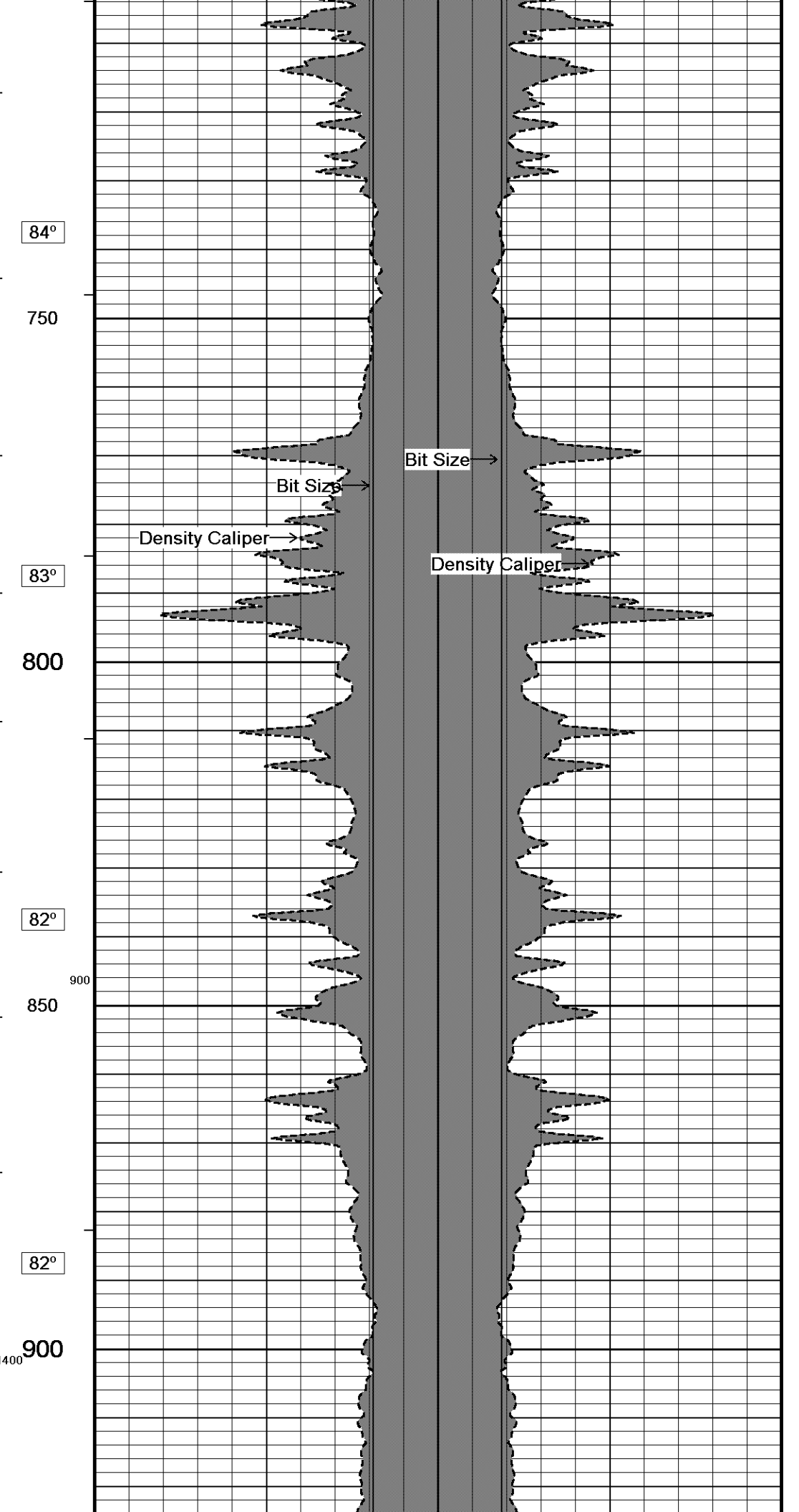
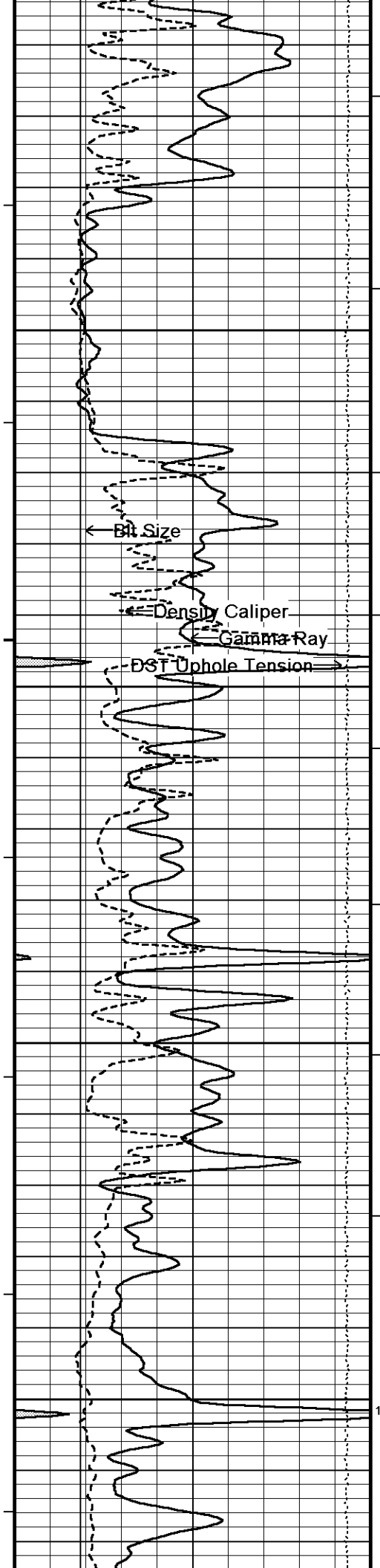
**5 INCH MAIN**

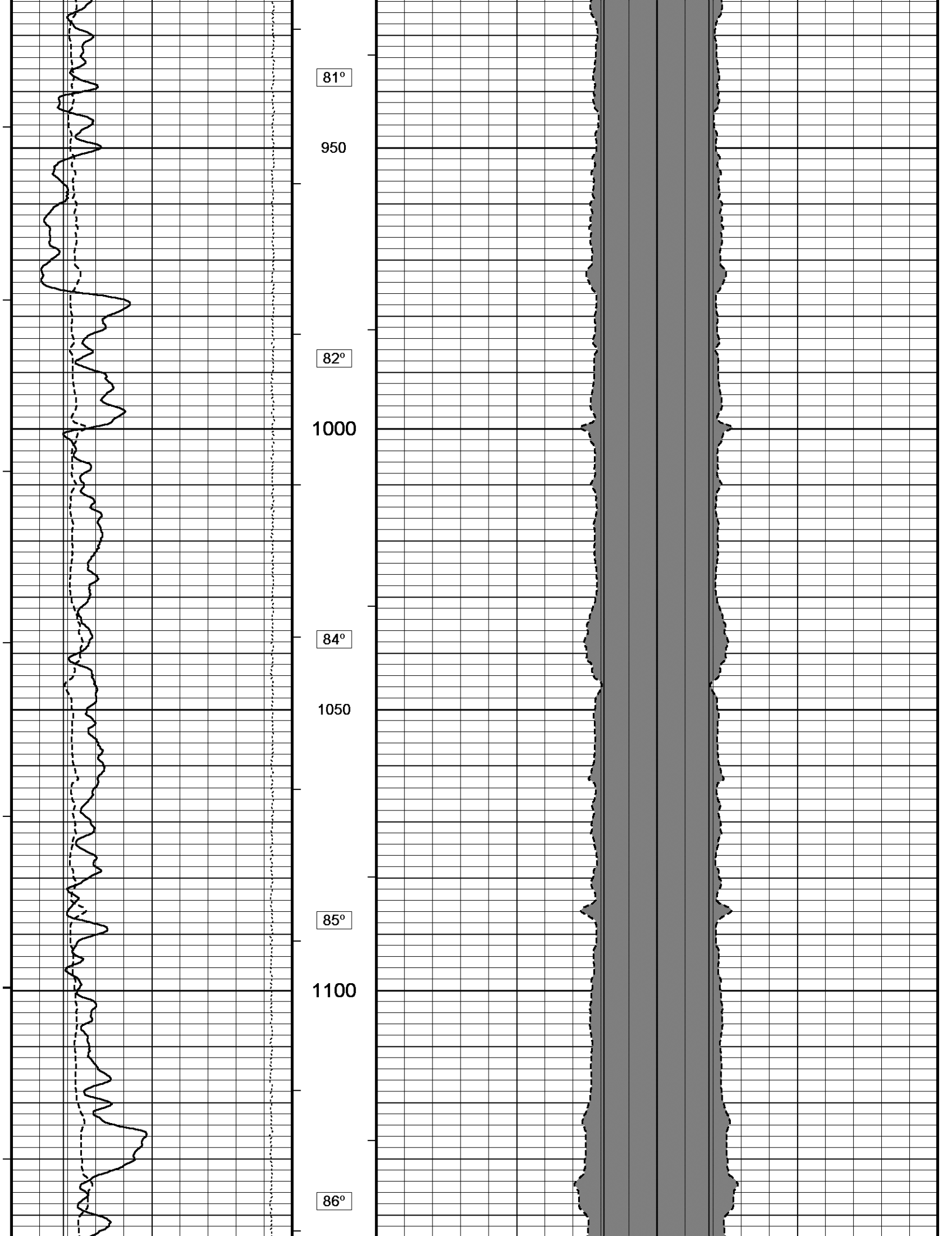
Depth Based Data - Maximum Sampling Increment 10.0cm Plotted on 14-MAR-2016 18:05  
 Filename: C:\Minimus 15.03.5939\Logs\Daystar Deutscher B #1-2\Daystar Deutscher B #1-2\_002.dta Recorded on 14-MAR-2016 15:01  
 System Versions: Logged with 15.03.5939 Plotted with 15.03.5939

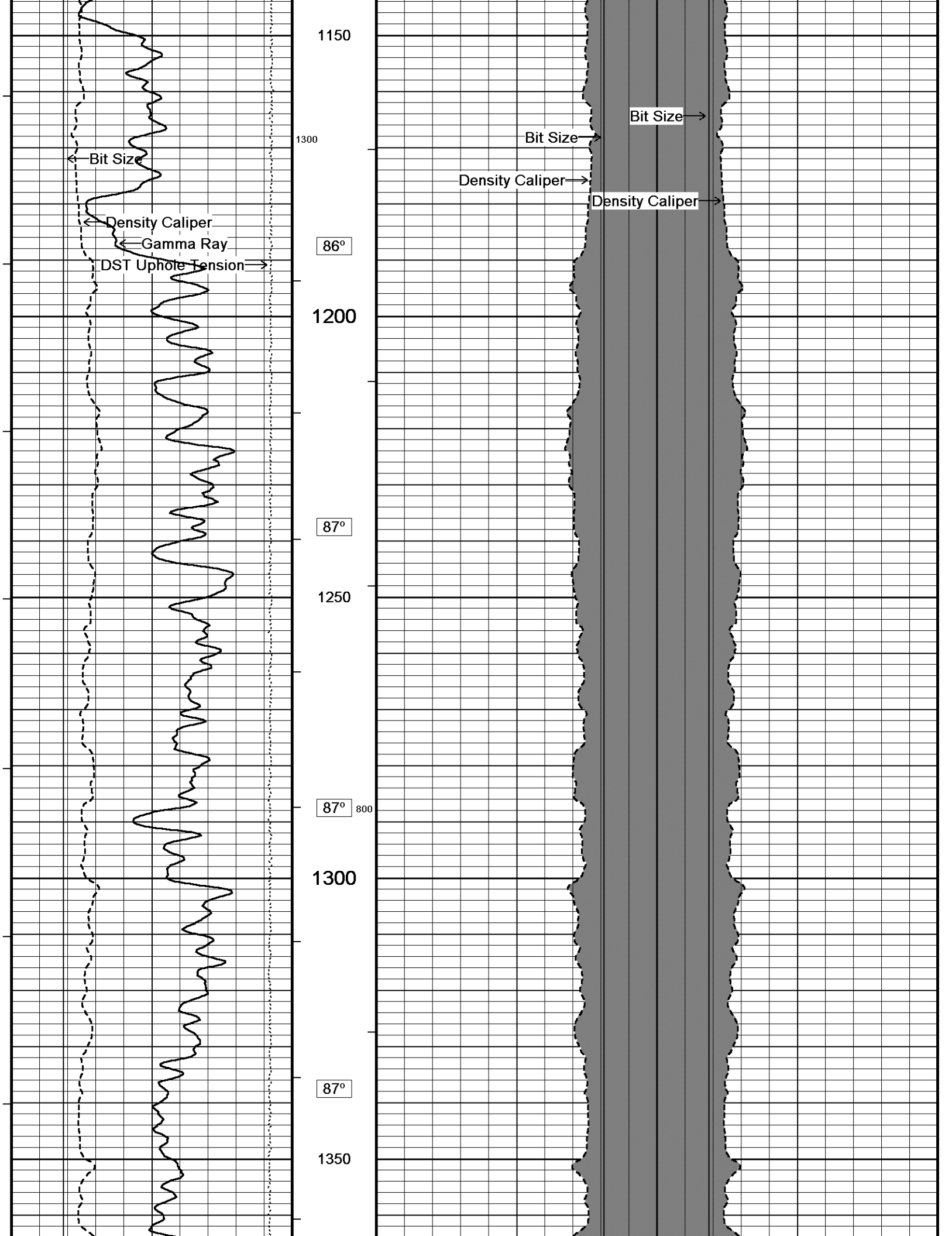


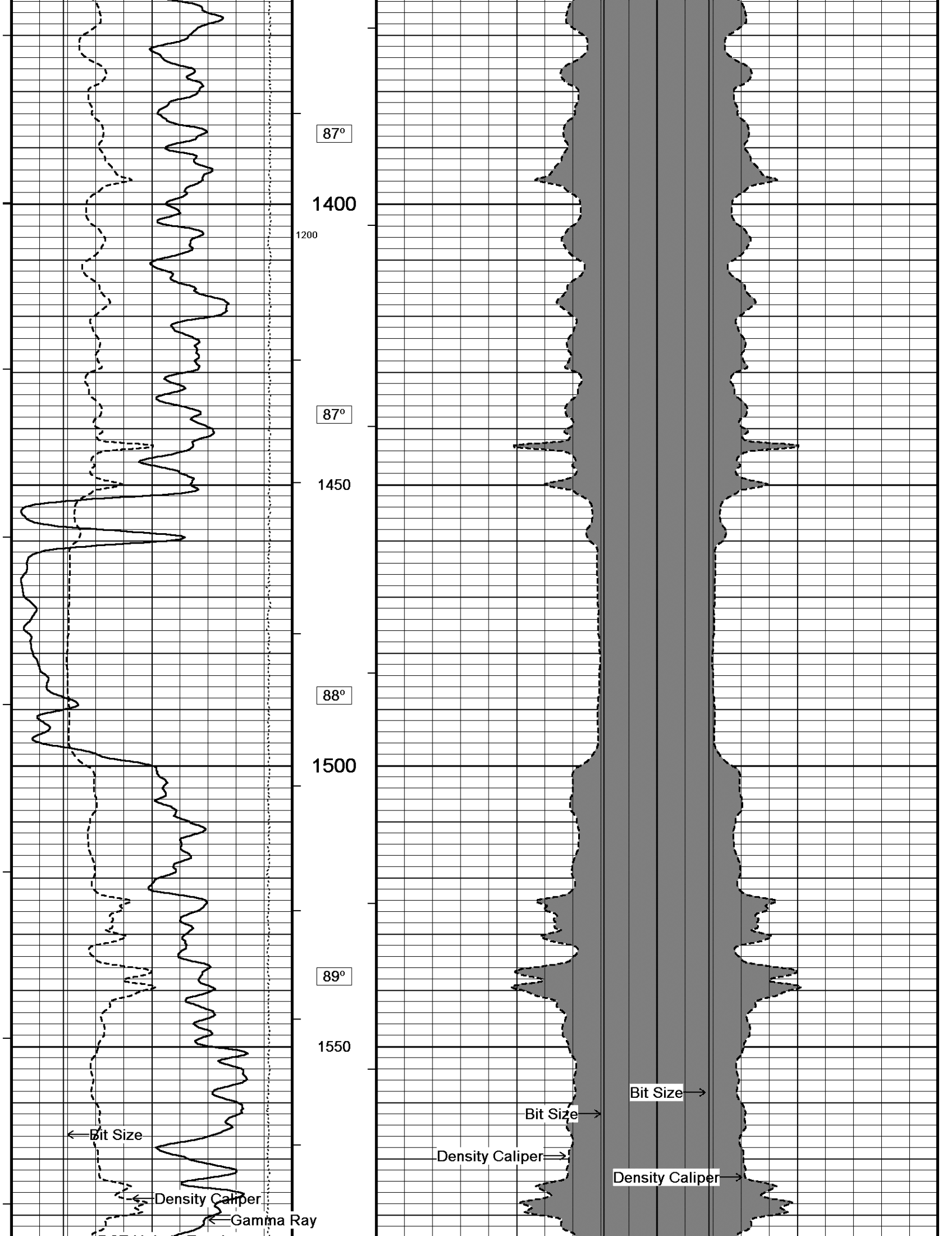












87°

1400

1200

87°

1450

88°

1500

89°

1550

← Bit Size

← Density Caliper

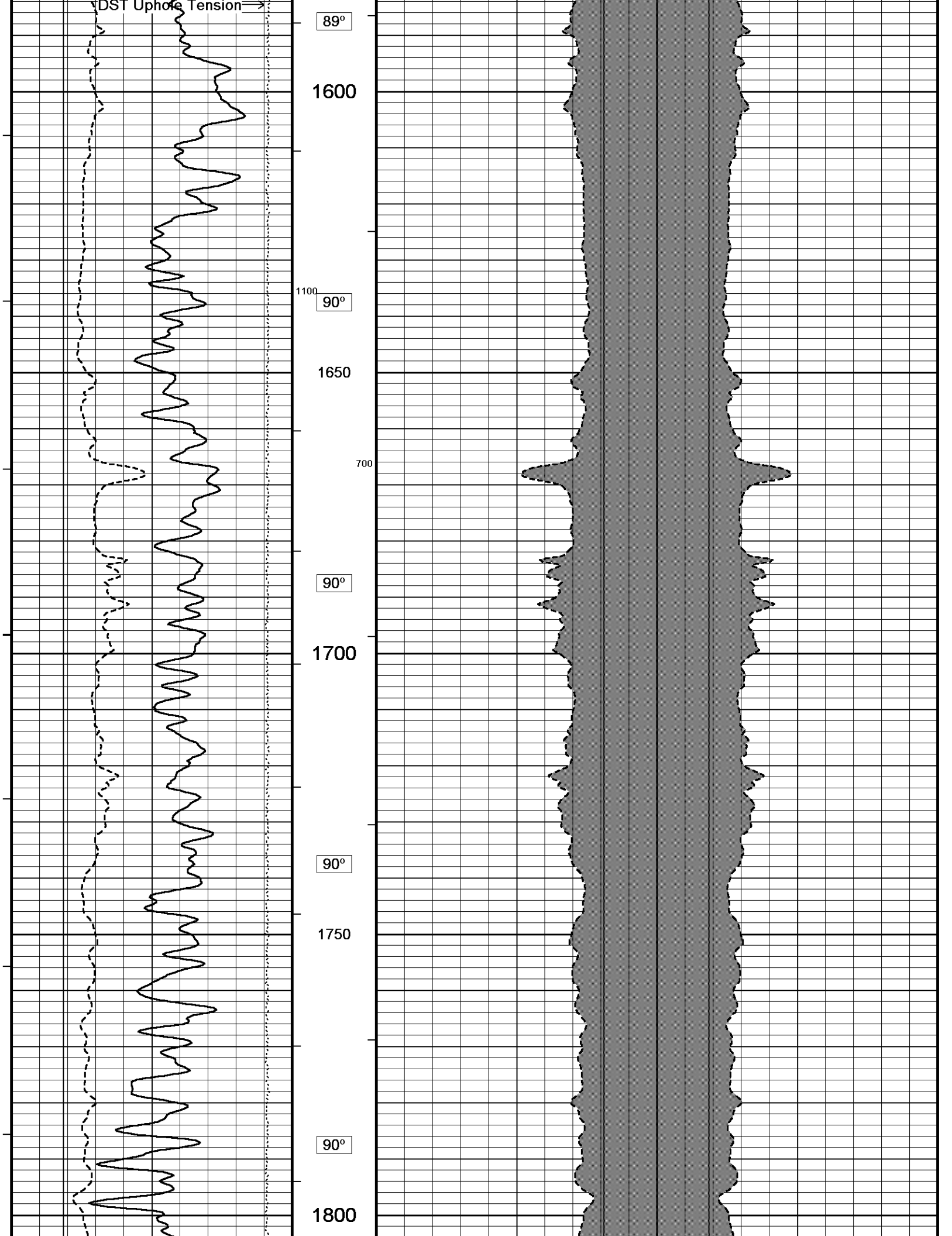
← Gamma Ray

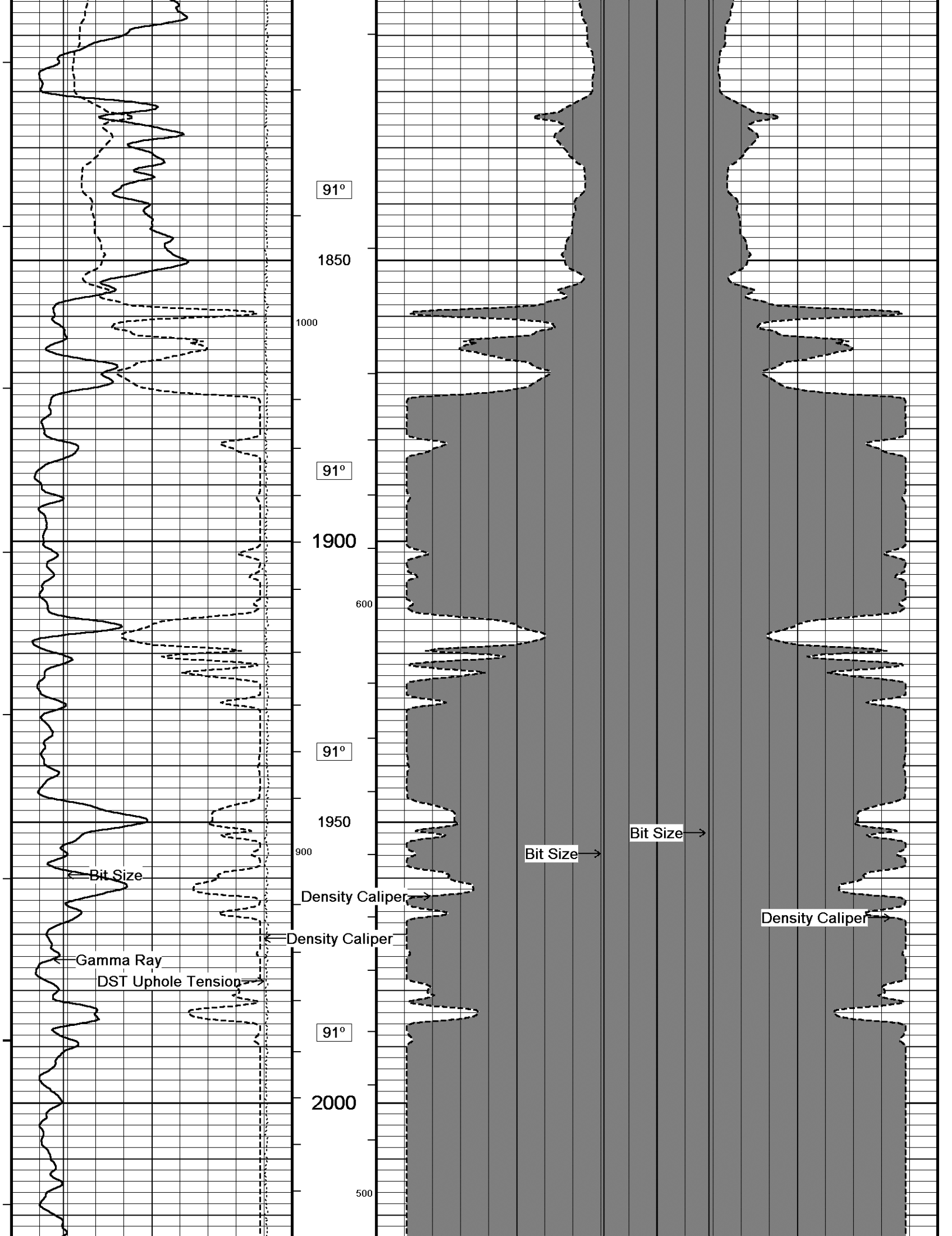
Bit Size →

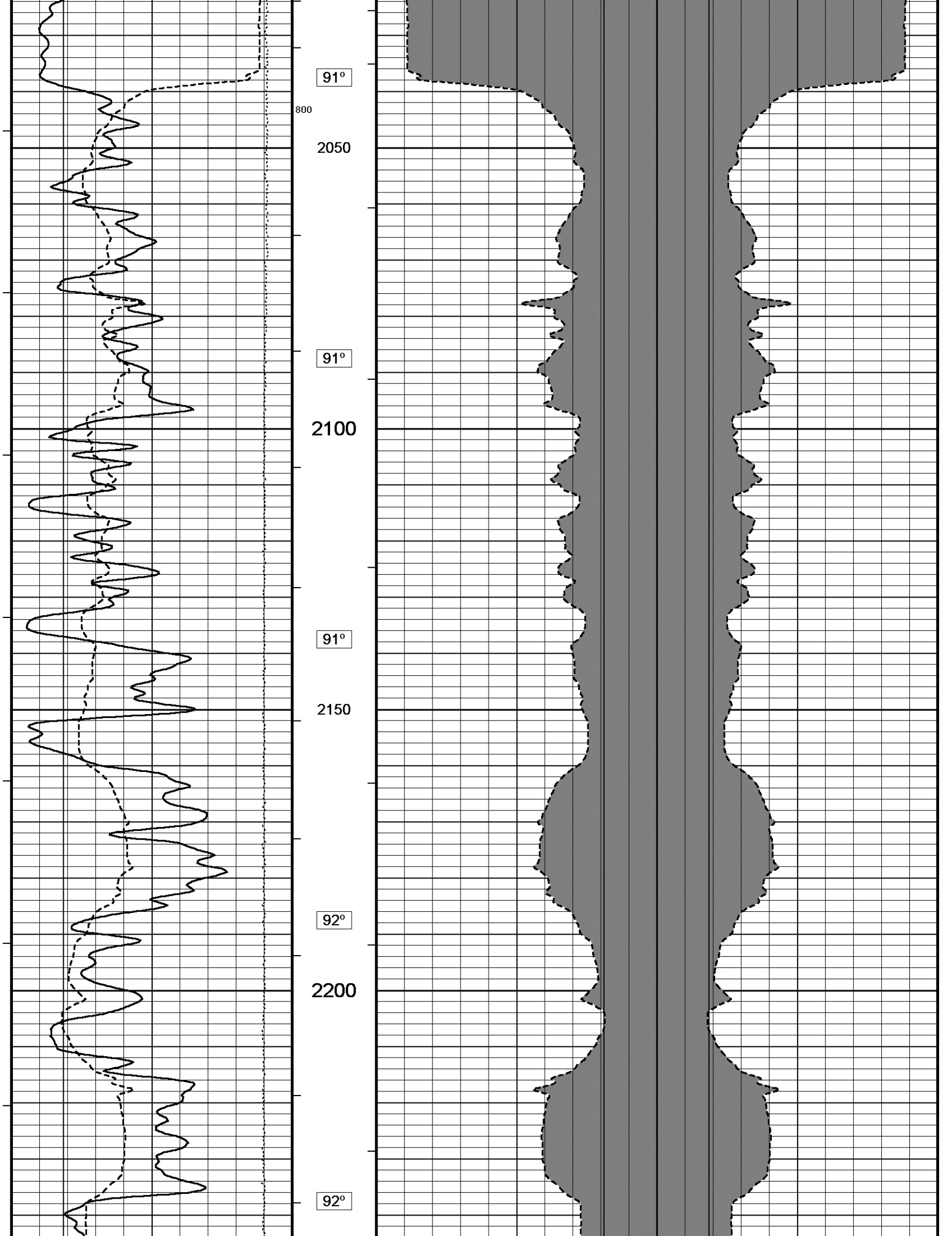
Density Caliper →

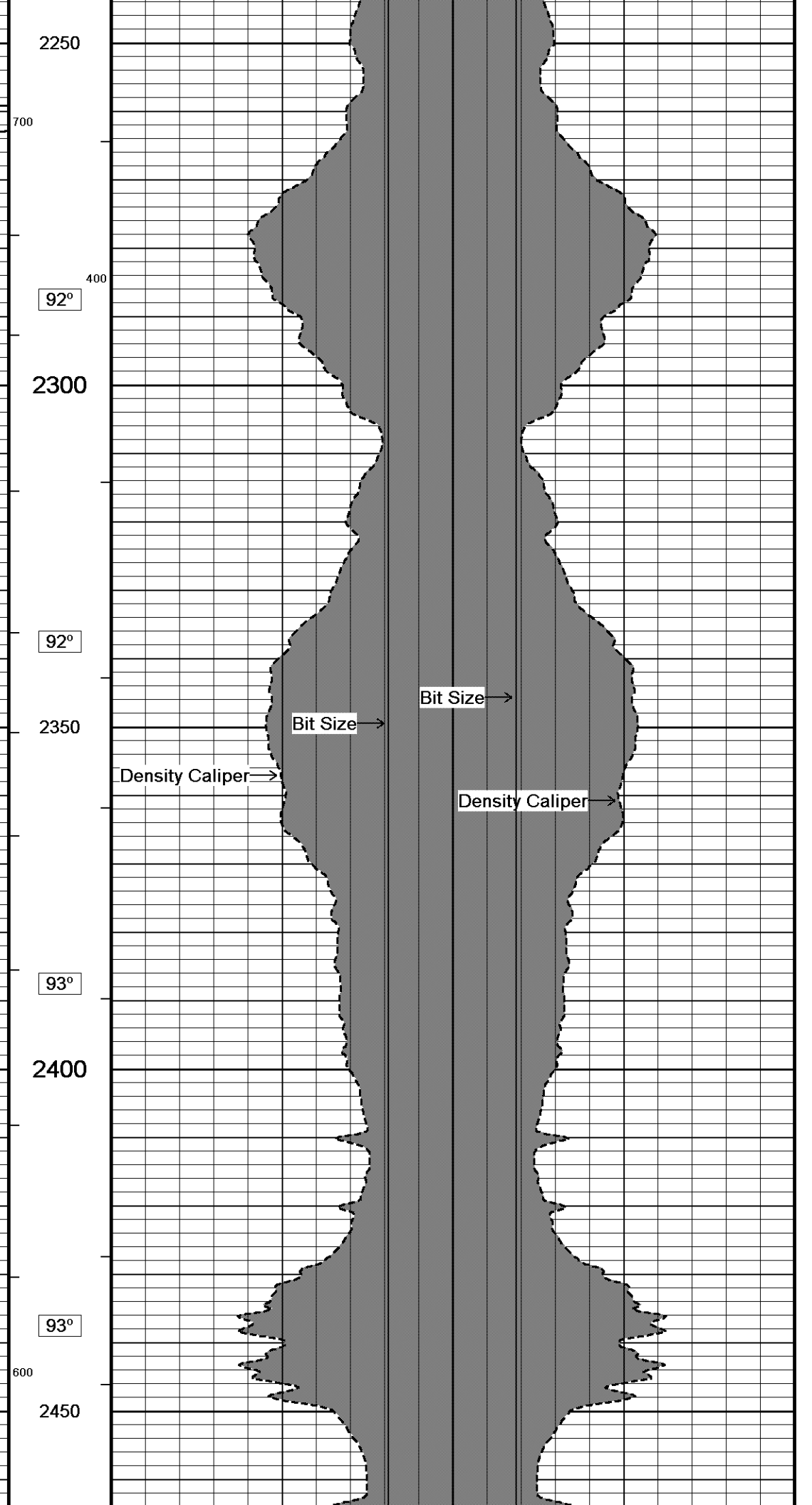
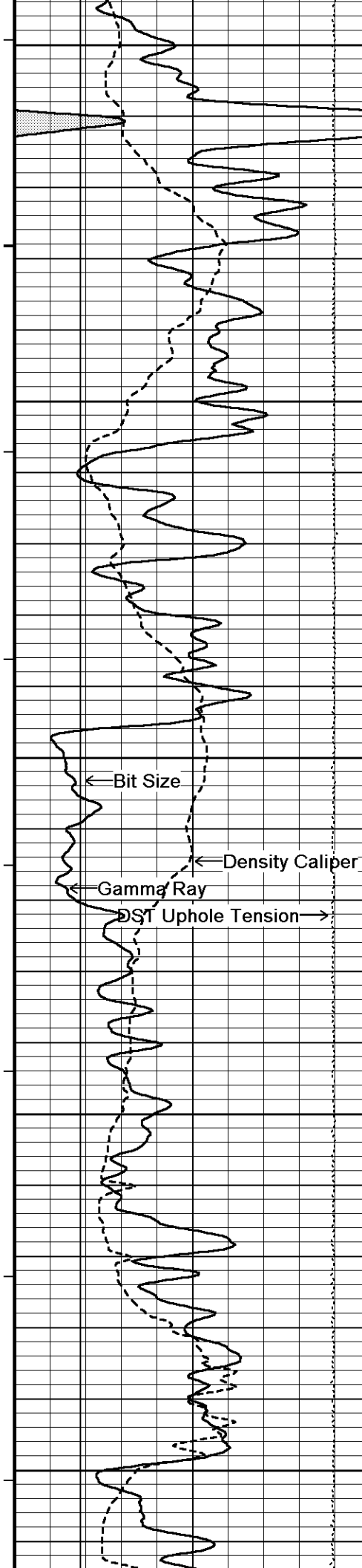
Bit Size →

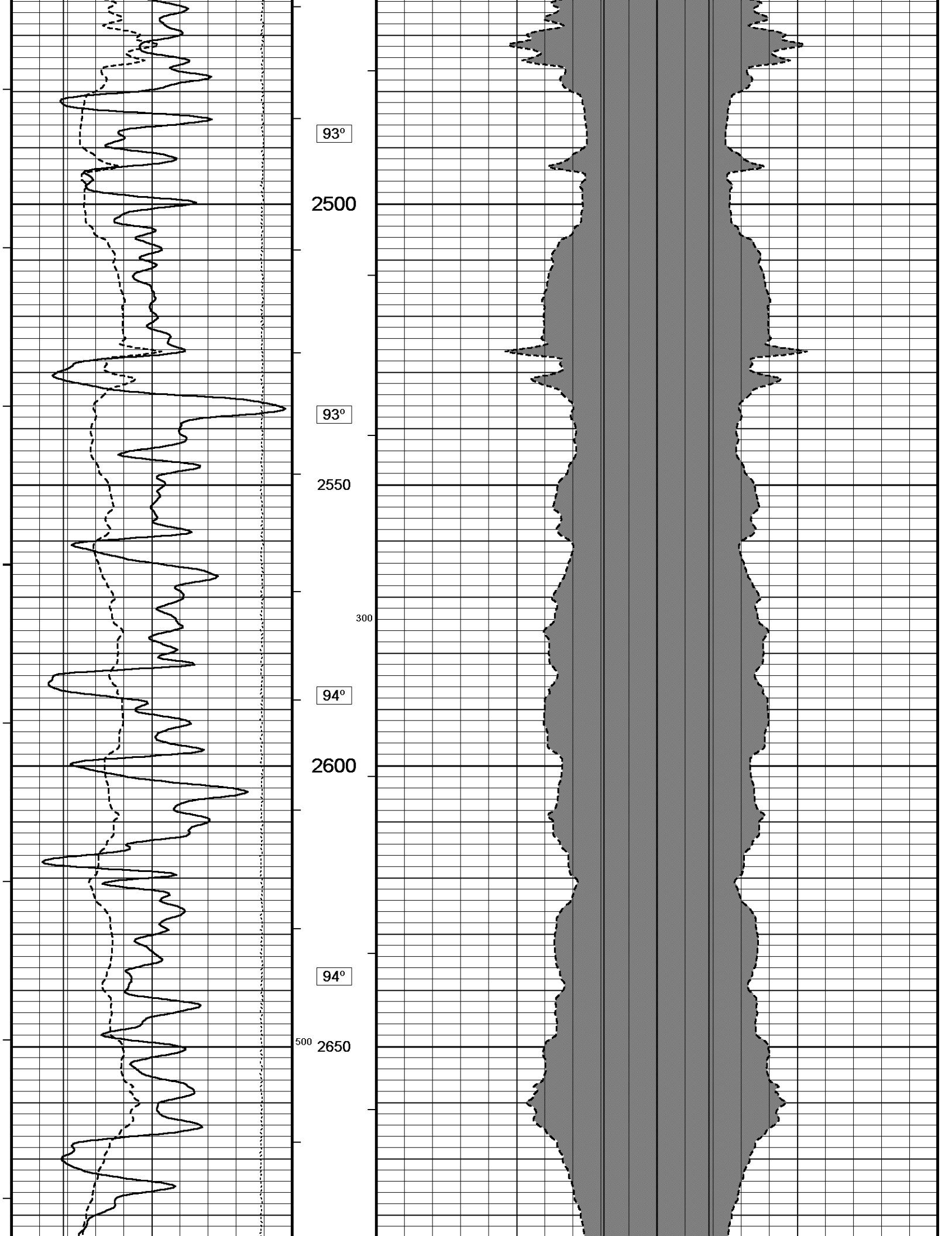
Density Caliper →

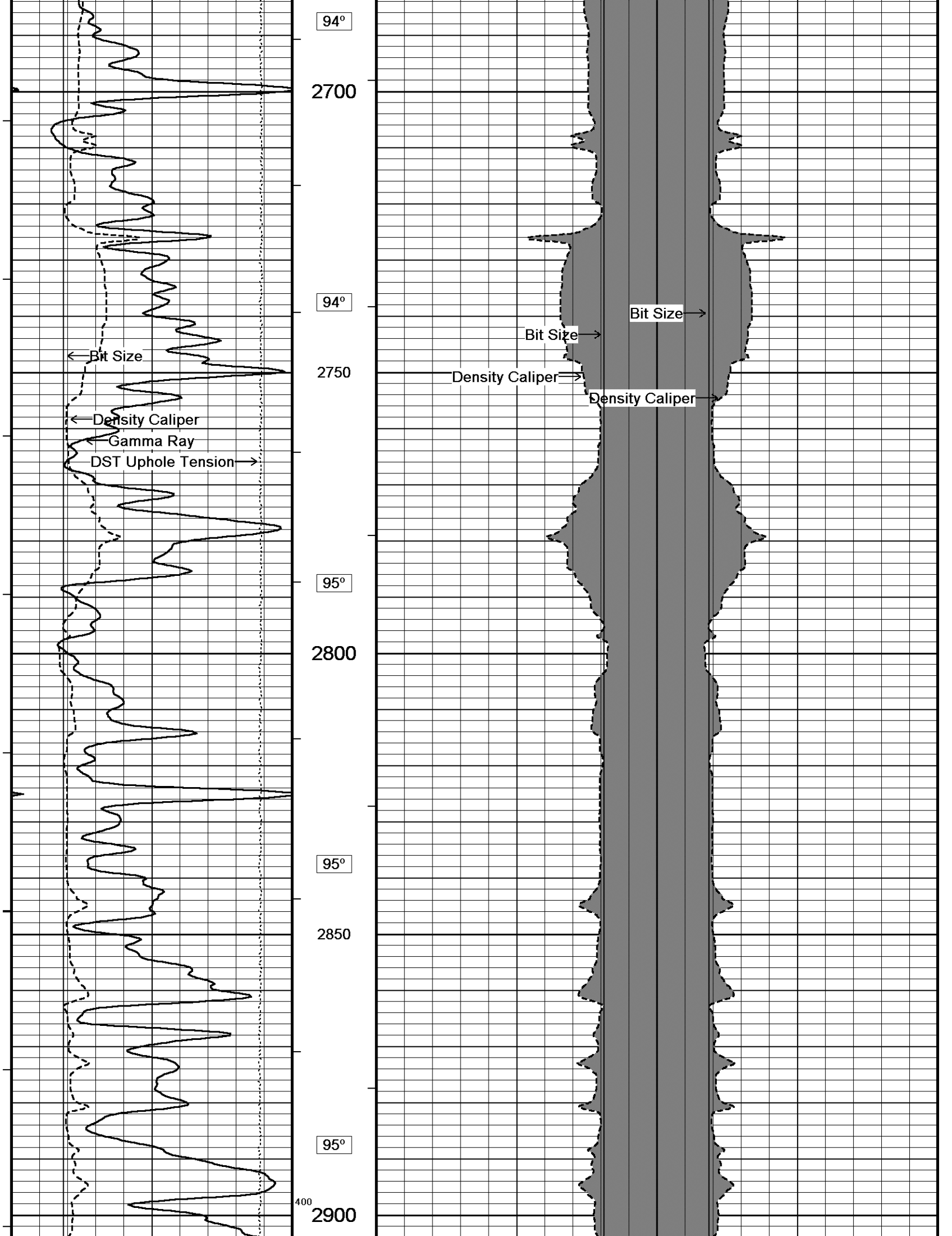


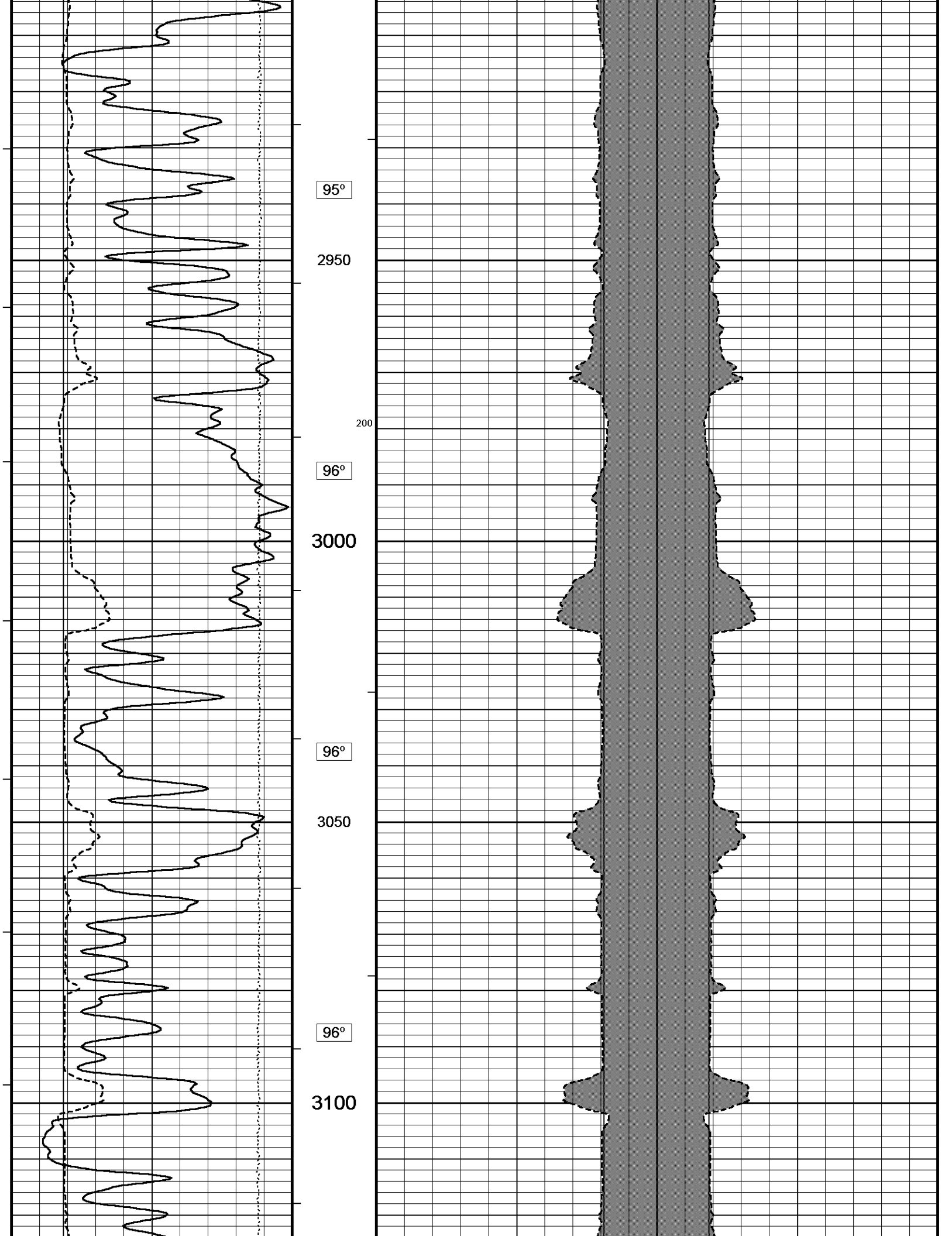


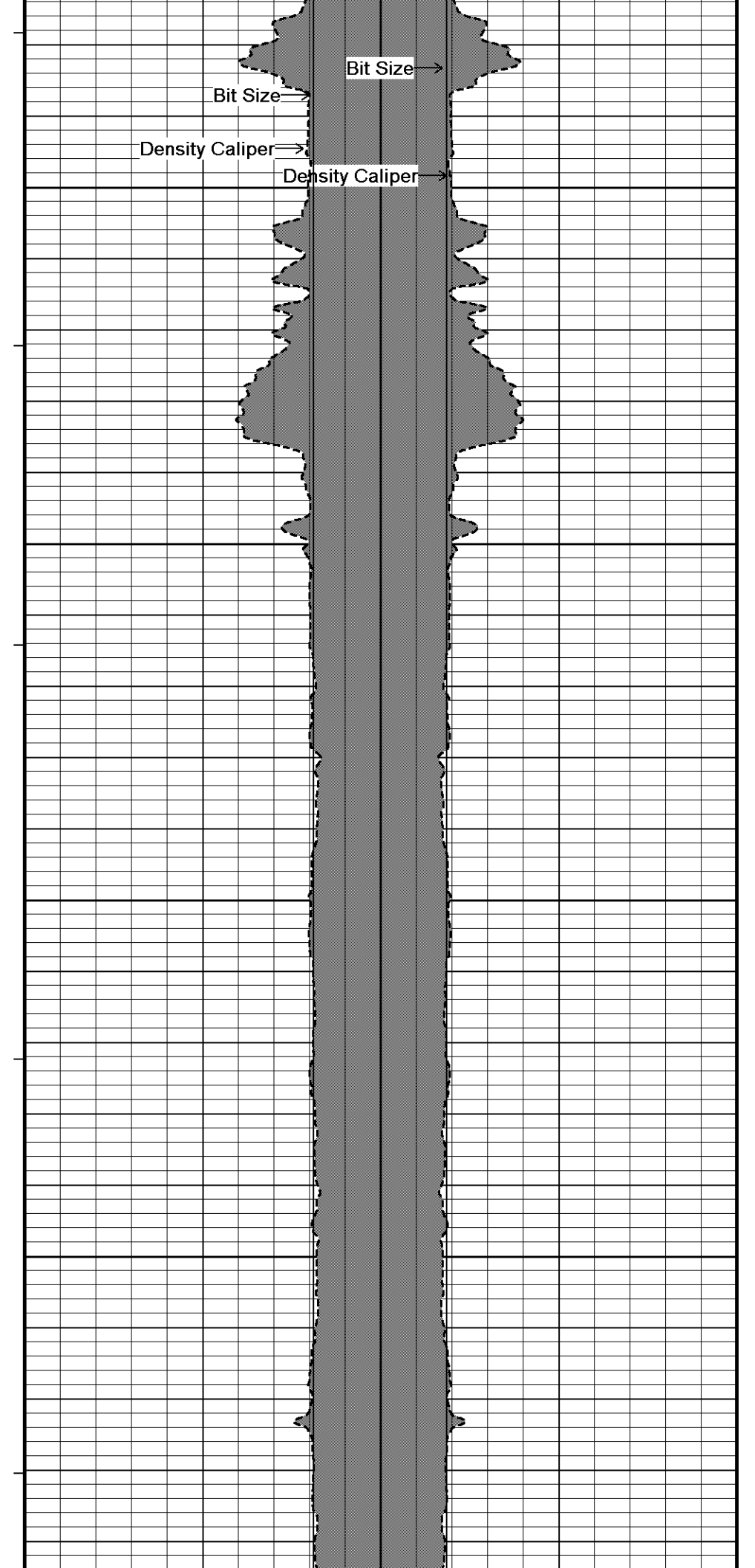
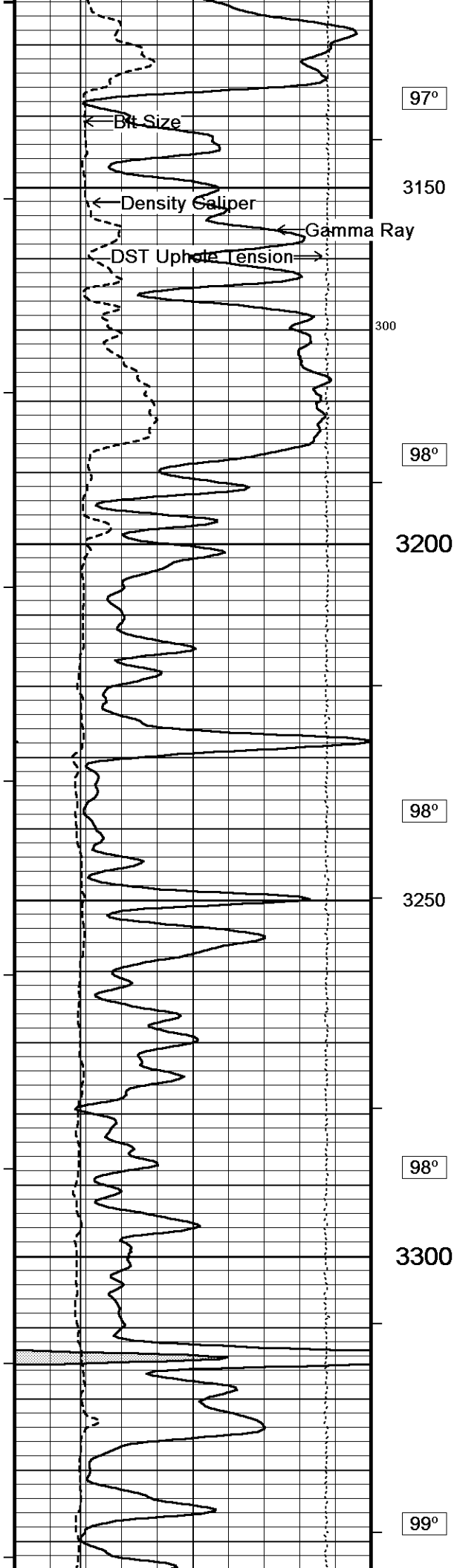




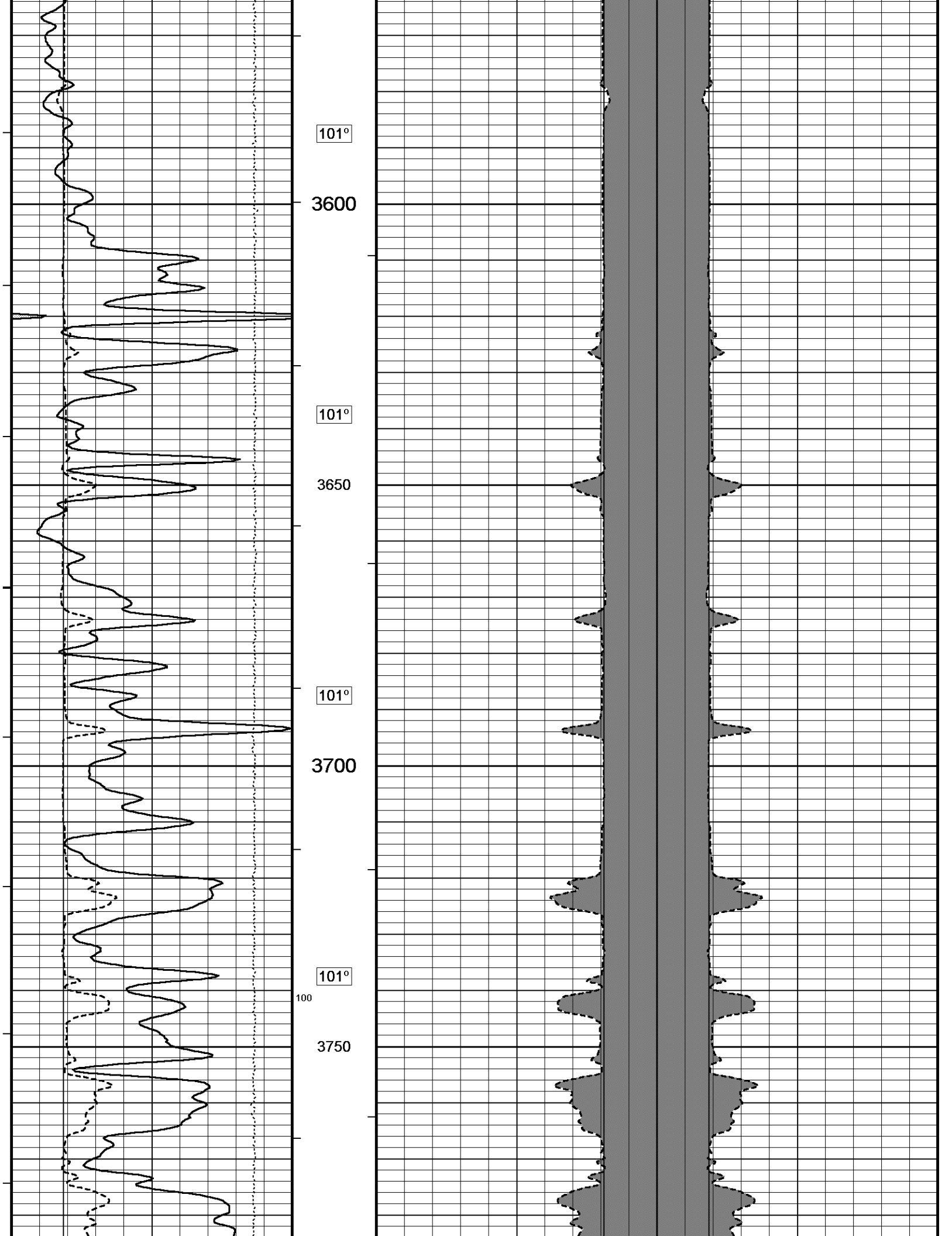


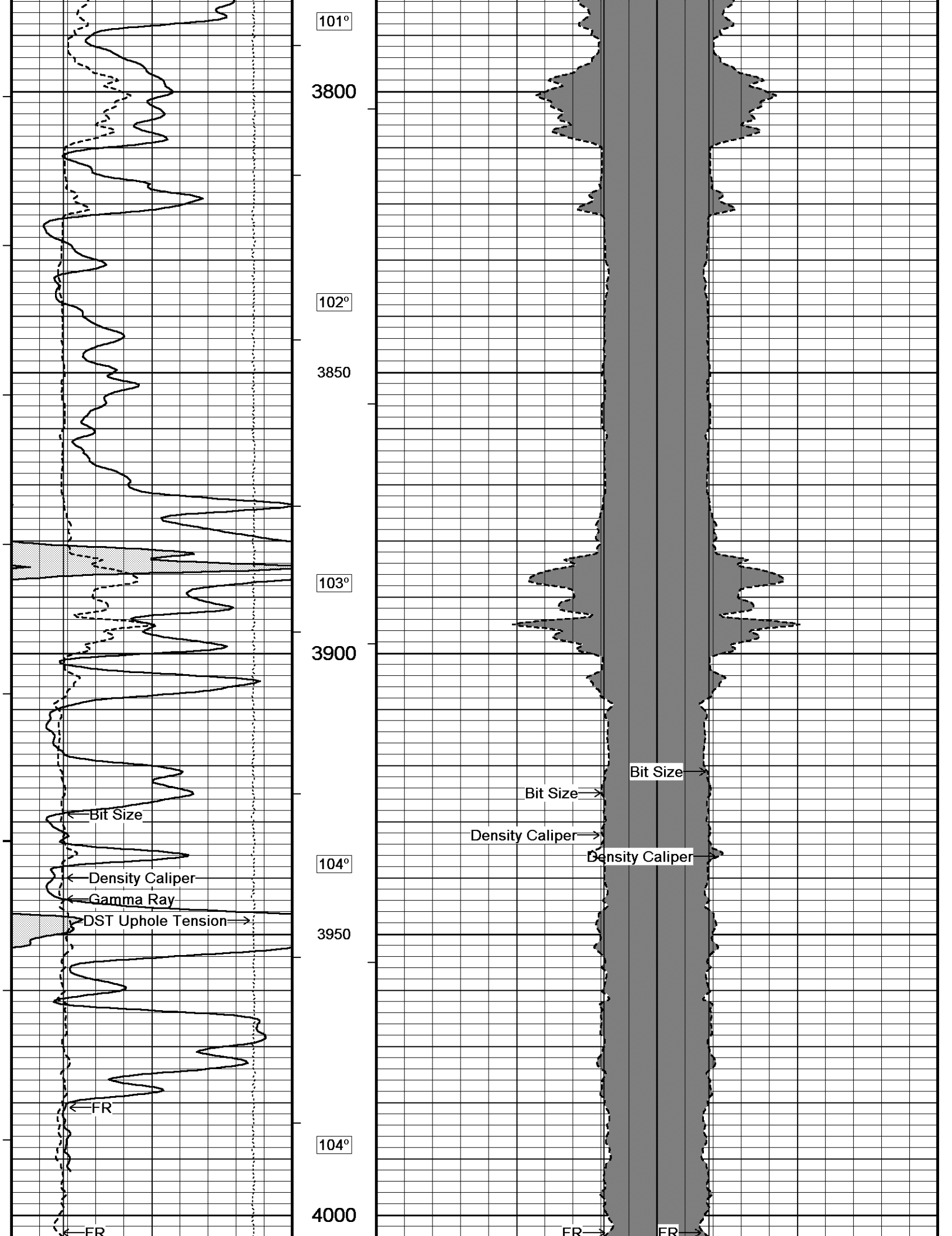


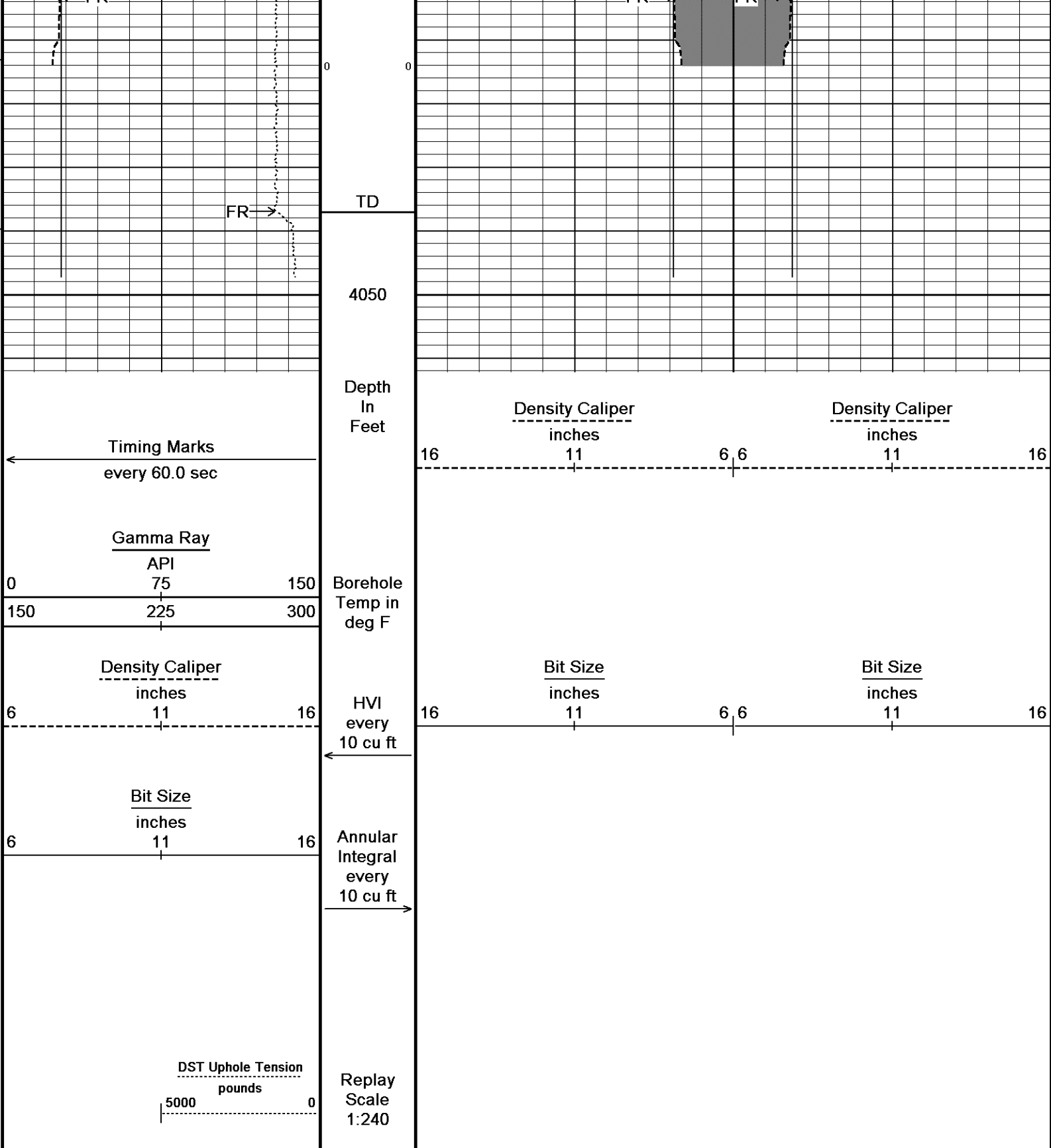












Depth Based Data - Maximum Sampling Increment 10.0cm  
 Plotted on 14-MAR-2016 18:05  
 Filename: C:\Minimus 15.03.5939\Logs\Daystar Deutscher B #1-2\Daystar Deutscher B #1-2\_002.dta  
 Recorded on 14-MAR-2016 15:01  
 System Versions: Logged with 15.03.5939 Plotted with 15.03.5939

↑ 5 INCH MAIN ↑

BEFORE SURVEY CALIBRATION  
 C:\Minimus 15.03.5939\Logs\Daystar Deutscher B #1-2\Daystar Deutscher B #1-2\_001.dta

General Constants All 000  
 Last Edited on 14-MAR-2016,14:09

General Parameters		
Mud Resistivity	0.520	ohm-metres
Mud Resistivity Temperature	75.000	degrees F
Water Level	0.000	feet
Borehole Fluid Processing	Wet Hole	

Hole/Annular Volume and Differential Caliper Parameters		
HVOL Method	Single Caliper	
HVOL Caliper 1	Density Caliper	
HVOL Caliper 2	N/A	
Annular Volume Diameter	5.500	inches
Caliper for Differential Caliper	None	

Rwa Parameters		
Porosity used	Base Density Porosity	
Resistivity used	Deep Induction	
RWA Constant A	0.610	
RWA Constant M	2.150	
SW/APOR Tool Source	0.000	

Down-hole Tension Calibration SMS 0

Field Calibration on 14-MAR-2016 13:45


Reading No	Measured	Calibrated (lbs)
1	9937.87	0.00
2	10554.14	500.00

Gamma Calibration MCG-C 123

Field Calibration on 14-MAR-2016 08:52

	Measured	Calibrated (API)
Background	73	51
Calibrator (Gross)	726	507
Calibrator (Net)	653	456

Gamma Calibration Tolerances MCG-C 123

Ratio 1.431  Counts/API

Gamma Constants MCG-C 123

Last Edited on 14-MAR-2016,13:18

Gamma Calibrator Number	MCGGRCC141	
GRC-M Calibrator Jig in Use?	NO	
Inactive Background Jig in Use?	NO	
Mud Density	1.09	gm/cc
Caliper Source for Processing	Density Caliper	
Tool Position	Eccentred	
Potassium Equivalence	Chloride	
K Mud Concentration	0.00	%

High Resolution Temperature Calibration MCG-C 123

Field Calibration on 31-OCT-2015,17:05

	Measured	Calibrated(Deg F)
Lower	50.00	50.00
Upper	100.00	100.00

High Resolution Temperature Constants MCG-C 123

Last Edited on 22-SEP-2015,11:43

Pre-filter Length 11

SP Calibration MCG-C 123

Field Calibration on 02-NOV-2015 16:50

	Measured	Calibrated (mV)
Reference 1	100.3	100.0
Reference 2	-100.1	-99.9

Micro Normal and Micro Inverse Calibration MMR-C.A 247

Base Calibration on 28-JAN-2016 15:04  
Field Check on 14-MAR-2016 08:38

Base Calibration				
	Measured		Calibrated (ohm-m)	
Channel	Resistor 1	Resistor 2	Resistor 1	Resistor 2
Micro Normal	10.2	49.9	5.1	25.6
Micro Inverse	10.0	49.5	3.4	16.9

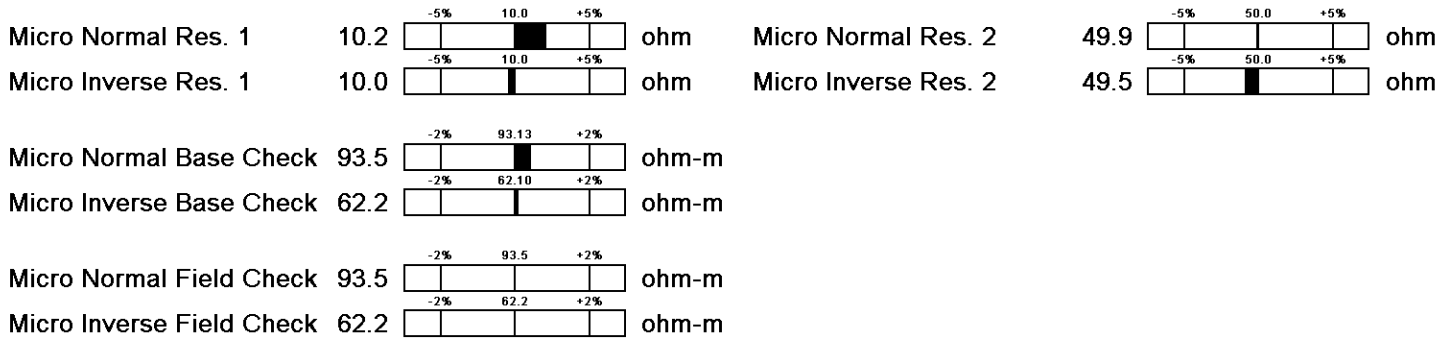
Channel	Base Check (ohm-m)		Field Check (ohm-m)	
Micro Normal	03.5		03.5	

Micro Normal  
Micro Inverse

93.3  
62.2

93.3  
62.2

Micro Normal & Micro Inverse Calibration Tolerance MMR-C.A 247



Micro Normal and Micro Inverse Constants MMR-C.A 247

Last Edited on 20-OCT-2015,12:33

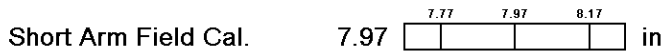
Pad Type 8-12 in Soft Rubber Inflatable 006-9011-159  
 Micro Normal K Factor 0.5110  
 Micro Inverse K Factor 0.3380  
 Standoff Offset 0.0000 inches

Caliper Calibration MMR-C.A 247

Base Calibration on 28-JAN-2016 14:54  
Field Calibration on 14-MAR-2016 08:37

Base Calibration			
Reading No	Measured	Calibrator Size (in)	
1	14598	5.98	
2	17942	7.97	
3	21198	9.86	
4	25146	11.92	
5	0	0.00	
6	N/A	N/A	
Field Calibration			
	Measured Caliper (in)	Actual Caliper (in)	
	7.97	7.97	

Caliper Calibration Tolerances MMR-C.A 247



Micro-Resistivity Caliper Constants MMR-C.A 247

Last Edited on

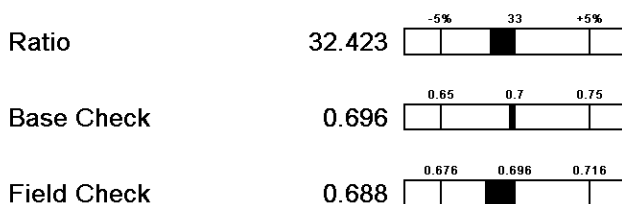
Sonde Configuration Resistivity Mode

Neutron Calibration MDN-A.B 66

Base Calibration on 12-FEB-2016 22:05  
Field Check on 14-MAR-2016 08:58

Base Calibration				
	Measured	Calibrated (cps)		
	Near Far	Near Far		
	3097 96	3714 110		
Ratio	32.423	33.764		
Field Calibrator at Base		Calibrated (cps)		
		2076 2984		
Ratio		0.696		
Field Check		Calibrated (cps)		
		2115 3075		
Ratio		0.688		

Neutron Calibration Tolerances MDN-A.B 66



Neutron Constants MDN-A.B 66

Last Edited on 14-MAR-2016,13:18

Neutron Source Id	P0204NN	
Neutron Jig Number	NJ5736	
Air Hole Processing	Legacy	
Caliper Source for Processing	Density Caliper	
Stand-off	0.00	inches
Mud Density	1.00	gm/cc
Limestone Sigma	7.10	cu
Sandstone Sigma	4.26	cu
Dolomite Sigma	4.70	cu
Formation Pressure Source	None	
Formation Pressure	N/A	kpsi
Temperature Source	Constant Value	
Temperature	68.00	degrees F
Mud Salinity	0.00	kppm
Salinity Correction	Not Applied	
Formation Fluid Salinity Source	None	
Formation Fluid Salinity	N/A	kppm
Barite Mud Correction	Not Applied	

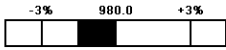
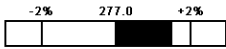
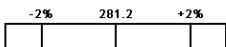
FE Calibration MFE-B.J 352

Base Calibration on 09-NOV-2015 11:10  
Field Check on 14-MAR-2016 08:30

Base Calibration

	Measured	Calibrated (ohm-m)
Reference 1	0.0	0.0
Reference 2	964.4	126.8
Base Check		281.2
Field Check		281.3

FE Calibration Tolerances MFE-B.J 352

Reference 2	964.4		ohm
Base Check	281.2		ohm-m
Field Check	281.3		ohm-m

FE Constants MFE-B.J 352

Last Edited on 14-MAR-2016,13:17

Running Mode	No Sleeve	
MFE K Factor	0.1268	
Borehole Correction Constants		
Sonde Position	0.5	inches
Hole Size Source	Density Caliper	
Hole Size Constant Value	N/A	inches
Rm Source	Global Value: Temperature Corrected	
Temp. for Rm Corr.	MCG External Temperature	

Sonic Constants MSS-A.A 55

Last Edited on 14-MAR-2016,13:17

Maximum Boundary Contrast	100.00	micro-sec/ft
Fluid Transit Time	189.00	micro-sec/ft
Limestone Transit Time	47.50	micro-sec/ft
Sandstone Transit Time	55.50	micro-sec/ft
Dolomite Transit Time	43.50	micro-sec/ft
Sonic used for Porosities	3-5' Compensated Sonic	
Correction for Sonde Skew	Applied	
Cycle Stretch Algorithm	Applied	
MN3FT	N/A	micro-sec
MX3FT	N/A	micro-sec
Hunt-Raymer Constant	83.13	micro-sec/ft

Sonde Mode	Compensated
Hole Type	Open Hole

Sonde Parameters

Measured	Calibrated
----------	------------

Offset N/A 0.0000  
 Free Pipe N/A N/A  
 Peak Amplitude Source N/A

Waveform	Start Time (micro-sec)	Width (micro-sec)	Pre Gain	Start Gain	Discriminator (mV)
3'	N/A	N/A	N/A	N/A	N/A
4'	N/A	N/A	N/A	N/A	N/A
5'	N/A	N/A	N/A	N/A	N/A
6'	N/A	N/A	N/A	N/A	N/A

Processed Fixed Gate Parameters

Waveform Used For Processing	N/A	Discriminator (mV)	N/A
Start Time (micro-sec)	End Time (micro-sec)	Discriminator (mV)	N/A
N/A	N/A	N/A	N/A
N/A	N/A	N/A	N/A
N/A	N/A	N/A	N/A
N/A	N/A	N/A	N/A
N/A	N/A	N/A	N/A

Full Waveform Parameters

Use 3' Waveform to derive TR	N/A
Use 4' Waveform to derive TR	N/A
Use 5' Waveform to derive TR	N/A
Use 6' Waveform to derive TR	N/A
3' Waveform Discriminator Level	N/A mV
4' Waveform Discriminator Level	N/A mV
5' Waveform Discriminator Level	N/A mV
6' Waveform Discriminator Level	N/A mV
3' Waveform Filter	N/A
4' Waveform Filter	N/A
5' Waveform Filter	N/A
6' Waveform Filter	N/A
Semblance Level	N/A
Semblance Window Width	N/A micro-sec
Sonic 1 Despiker	N/A N/A
Sonic 2 Despiker	N/A N/A

Induction Calibration MAI-A.A 111

Base Calibration on 05-AUG-2014,09:34  
 Field Check on 14-MAR-2016 08:29

Base Calibration

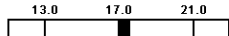
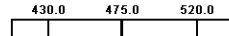
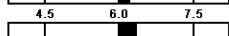
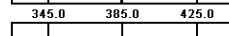
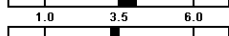
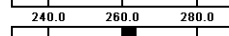
Test Loop Calibration Channel	Measured		Calibrated (mmho/m)	
	Low	High	Low	High
1	17.6	473.6	9.3	966.2
2	6.4	385.9	7.6	821.4
3	3.2	264.0	5.2	566.0
4	2.1	135.5	2.6	279.2

Array Temperature 23.0 Deg F

Test Loop Calibration Verified 09-DEC-2015 11:03

Channel	Base Check (mmho/m)		Field Check (mmho/m)		
	Low	High	Low	High	
1	12.1	3873.0	11.8	3871.7	
2	29.8	3528.1	29.8	3527.3	
3	29.1	3021.3	29.1	3020.7	
4	19.1	2058.5	19.2	2058.1	
Deep	17.7	1962.1	17.7	1961.6	
Medium	43.1	3976.4	43.2	3975.7	
Shallow	44.4	5232.7	44.4	5231.5	
Array Temperature	65.8		59.4		Deg F

Induction Calibration Tolerances MAI-A.A 111

Low Conductivity 1	17.6		mmho/m	High Conductivity 1	473.6		mmho/m
Low Conductivity 2	6.4		mmho/m	High Conductivity 2	385.9		mmho/m
Low Conductivity 3	3.2		mmho/m	High Conductivity 3	264.0		mmho/m

Low Conductivity 4	2.1		mmho/m High Conductivity 4	135.5		mmho/m
Background Vx 1	0.0		mmho/m Phase Check Loop 1	0.0		%
Background Vx 2	0.0		mmho/m Phase Check Loop 2	0.0		%
Background Vx 3	0.0		mmho/m Phase Check Loop 3	0.0		%
Background Vx 4	0.0		mmho/m Phase Check Loop 4	0.0		%

Induction Constants MAI-A.A 111 Last Edited on 14-MAR-2016,13:17

Induction Model	RtAP-WBM		
Borehole Correction Constants			
Tool Centred	No		
Hole Size Source	Density Caliper		
Hole Size Constant Value	N/A	inches	
Stand-off Type	Fins		
Stand-off	0.50	inches	
Number of Fins on Stand-off	8.0000		
Stand-off Fin Angle	45.00	degrees	
Stand-off Fin Width	0.5000	inches	
Rm Source	Global Value: Temperature Corrected		
Temp. for Rm Corr.	MCG External Temperature		
Squasher Start	0.0020	mhos/metre	
Squasher Offset	N/A	mhos/metre	
Borehole Normalisation			
DRM1	0.0000	DRC1	0.0000
DRM2	0.0000	DRC2	0.0000
MRM1	0.0000	MRC1	0.0000
MRM2	0.0000	MRC2	0.0000
SRM1	0.0000	SRC1	0.0000
SRM2	0.0000	SRC2	0.0000
Calibration Site Corrections			
Channel 1	0.00	mmhos/metre	
Channel 2	0.00	mmhos/metre	
Channel 3	0.00	mmhos/metre	
Channel 4	0.00	mmhos/metre	
Symmetrised Receiver Gains			
Receiver 1	1.00		
Receiver 2	1.00		
Receiver 3	1.00		
Receiver 4	1.00		
Apparent Porosity and Water Saturation Constants			
Archie Constant (A)	1.00		
Cementation Exponent (M)	2.00		
Saturation Exponent (N)	2.00		
Saturation of Water for Apor	100.00	percent	
Resistivity of Water for Apor and Sw	0.05	ohm-m	
Resistivity of Mud Filtrate for Sw	0.00	ohm-m	
Source for Rt	0.00		
Source for Rxo	0.00		

High Resolution Temperature Calibration MAI-A.A 111 Field Calibration on 24-NOV-2014,10:23

	Measured	Calibrated(Deg F)
Lower	10.00	10.00
Upper	100.00	100.00

High Resolution Temperature Constants MAI-A.A 111 Last Edited on 26-JUN-2014,15:06

Pre-filter Length	11
-------------------	----

Photo Density Calibration MPD-B 104 Base Calibration on 12-FEB-2016 21:25  
Field Check on 14-MAR-2016 08:36

Density Calibration	Measured	Calibrated (sdu)
Base Calibration		

	Near	Far	Near	Far
Background	1155	1342		
Reference 1	49717	23901	59556	30836
Reference 2	20125	2432	24941	2541

Field Check at Base  
1154.8 1342.5

Field Check  
1156.1 1341.1

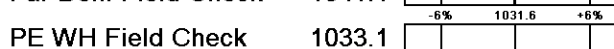
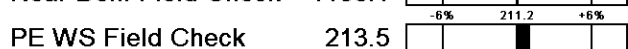
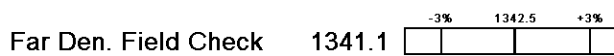
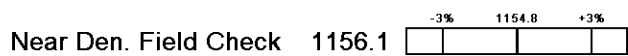
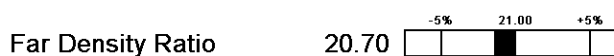
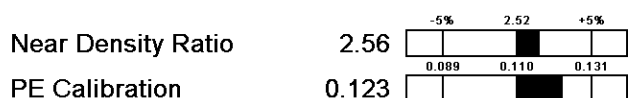
PE Calibration

Base Calibration	WS	Measured WH	Ratio	Calibrated Ratio
Background	211	1032		
Reference 1	20971	49542	0.428	0.371
Reference 2	5830	19993	0.296	0.272

Field Check at Base  
211.2 1031.6

Field Check  
213.5 1033.1

Photo Density Calibration Tolerances MPD-B 104



Density Constants MPD-B 104

Last Edited on 14-MAR-2016,13:18

Density Source Id	P50557B	
Nylon Calibrator Number	DNCE695	
Aluminium Calibrator Number	DACD698	
Density Shoe Profile	8 inch	
Caliper Source for Processing	Density Caliper	
PE Correction to Density	Not Applied	
Mud Density	1.09	gm/cc
Mud Density Z/A Multiplier	1.11	
Mud Filtrate Density	1.00	gm/cc
Dry Hole Mud Filtrate Density	1.00	gm/cc
DNCT	0.00	gm/cc
CRCT	0.00	gm/cc
Density Z/A Correction	Hybrid	
Matrix density (gm/cc)	Depth (m)	
2.71	0.00	
0.00	0.00	
0.00	0.00	
0.00	0.00	
0.00	0.00	
0.00	0.00	
0.00	0.00	
0.00	0.00	
0.00	0.00	

Caliper Calibration MPD-B 104

Base Calibration on 12-FEB-2016 20:54  
Field Calibration on 14-MAR-2016 08:32

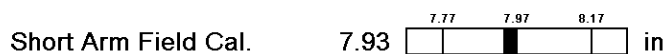
Base Calibration Reading No	Measured	Calibrator Size (in)
1	13189	3.99
2	22005	5.98
3	30656	7.97
4	38848	9.86
5	47902	11.92
6	N/A	N/A

Field Calibration

Measured Caliper (in)  
7.93

Actual Caliper (in)  
7.97

Caliper Calibration Tolerances MPD-B 104



DOWNHOLE EQUIPMENT

C:\Minimus 15.03.5939\Logs\Daystar Deutscher B #1-2\Daystar Deutscher B #1-2\_001.dta

Cablehead, 11 pin  
CBH-CA 155 LG: 2.40 ft WT: 24.3 lb OD: 2.244 in

Compact Comms Gamma  
MCG-C 123 LG: 8.70 ft WT: 63.9 lb OD: 2.244 in

Compact Micro-Resistivity  
MMR-C.A 247 LG: 8.59 ft WT: 81.6 lb OD: 4.882 in

Compact Neutron  
MDN-A.B 66 LG: 5.04 ft WT: 50.7 lb OD: 2.244 in

Compact Density/Caliper  
MPD-B 104 LG: 9.59 ft WT: 90.4 lb OD: 2.449 in

Compact Focussed Electric  
MFE-B.J 352 LG: 6.05 ft WT: 48.5 lb OD: 2.244 in

Compact Sonic  
MSS-A.A 55 LG: 12.52 ft WT: 72.8 lb OD: 2.244 in

Compact Induction  
MAI-A.A 111 LG: 10.81 ft WT: 48.5 lb OD: 2.244 in

Total Length: 63.70 ft Weight: 480.6 lb



- 56.02 ft GRGC - MCG Gamma Ray
- 53.11 ft CGXT - MCG External Temperature
- 46.76 ft MBTC - MMR Caliper
- 45.76 ft MINV - MMR MicroLog Inverse
- 45.76 ft MNRL - MMR MicroLog Normal
- 40.97 ft NPRL - Limestone Neutron Por.
- 33.73 ft AVOL - Annular Volume
- 33.73 ft HVOL - Hole Volume
- 33.73 ft CLDC - Density Caliper
- 31.80 ft DPRL - Limestone Density Por.
- 31.80 ft DEN - Compensated Density
- 31.80 ft DCOR - Density Correction
- 31.74 ft PDPE - PE
- 26.24 ft FEFE - Shallow FE
- 16.96 ft TR11 - 4' Transit Time
- 16.46 ft TR21 - 3' Transit Time
- 15.95 ft TR12 - 6' Transit Time
- 15.46 ft TR22 - 5' Transit Time
- 12.96 ft SPRL - Wyllie Lime. Sonic Por.
- 12.96 ft DT35 - 3-5' Compensated Sonic
- 3.34 ft R400 - Array Ind. One Res 40
- 3.34 ft R600 - Array Ind. One Res 60
- 3.34 ft CTAO - Array Ind. One Cond Ct
- 3.34 ft RTAO - Array Ind. One Res Rt
- 0.23 ft SPCG - Spontaneous Potential
- Tool Zero (0.13ft from bottom)
- 0.13 ft SMTU - DST Uphole Tension

All measurements relative to tool zero.

COMPANY	DAYSTAR PETROLEUM, INC.
WELL	DEUTSCHER B #1-2
FIELD	WILDCAT
PROVINCE/COUNTY	TREGO
COUNTRY/STATE	U.S.A. / KANSAS

Elevation Kelly Bushing	2131.00	feet	First Reading	4005.00	feet
Elevation Drill Floor	2129.00	feet	Depth Driller	4040.00	feet
Elevation Ground Level	2123.00	feet	Depth Logger	4037.00	feet



CALIPER LOG

**Weatherford**<sup>®</sup>