



Casedhole Solutions

SONIC LOG

Company SHELBY RESOURCES, LLC.

Well MP #1-23

Field

County BARTON State KANSAS

Location: 980' FNL & 1754' FWL API # : 15-009-26139-00-00

Other Services
CDL/CNL
DIL/MEL

SEC 23 TWP 18S RGE 14W

Permanent Datum GROUND LEVEL Elevation 1906
Log Measured From KELLY BUSHING 11' A.G.L.
Drilling Measured From KELLY BUSHING

Elevation
K.B. 1917
D.F. 1915
G.L. 1906

Date 2/27/16

Run Number TWO

Depth Driller 3520

Depth Logger 3520

Bottom Logged Interval 3505

Top Log Interval 00

Casing Driller 8 5/8" @ 857

Casing Logger 857

Bit Size 7 7/8"

Type Fluid in Hole CHEMICAL MUD

Density / Viscosity 9.3/59

pH / Fluid Loss 10.0/7.2

Source of Sample FLOWLINE

Rm @ Meas. Temp .80 @ 55F

Rmt @ Meas. Temp .60 @ 55F

Rmc @ Meas. Temp .96 @ 55F

Source of Rmf / Rmc MEASUREMENT

Rm @ BHT .39 @ 112F

Time Circulation Stopped 2 HOURS

Time Logger on Bottom 112F

Maximum Recorded Temperature 4010

Equipment Number HAYS, KANSAS

Location JASON CAPPELLUCCI

Recorded By JEREMY SCHWARTZ

Witnessed By

<<< Fold Here >>>

All interpretations are opinions based on inferences from electrical or other measurements and we cannot and do not guarantee the accuracy or correctness of any interpretation, and we shall not, except in the case of gross or willful negligence on our part, be liable or responsible for any loss, costs, damages, or expenses incurred or sustained by anyone resulting from any interpretation made by any of our officers, agents or employees. These interpretations are also subject to our general terms and conditions set out in our current Price Schedule.

Comments

THANK YOU FOR USING CASED HOLE SOLUTIONS, HAYS, KS. (785) 628-6395
DIRECTIONS:
RUSSELL, KS. - SOUTH TO HWY 4 INTERSECTION - SOUTH TO THE CURVE EAST
1/4 EAST - SOUTH INTO

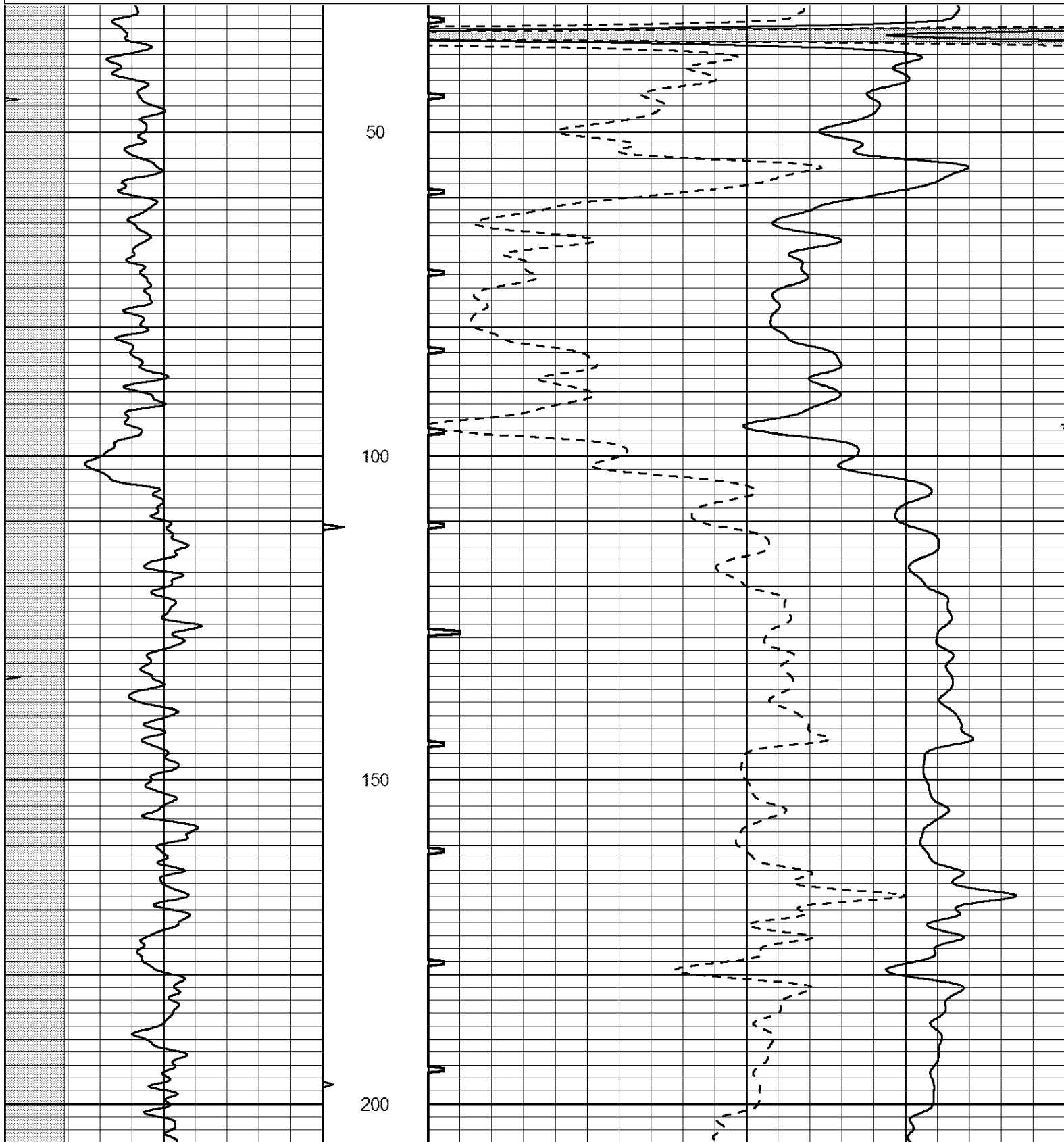


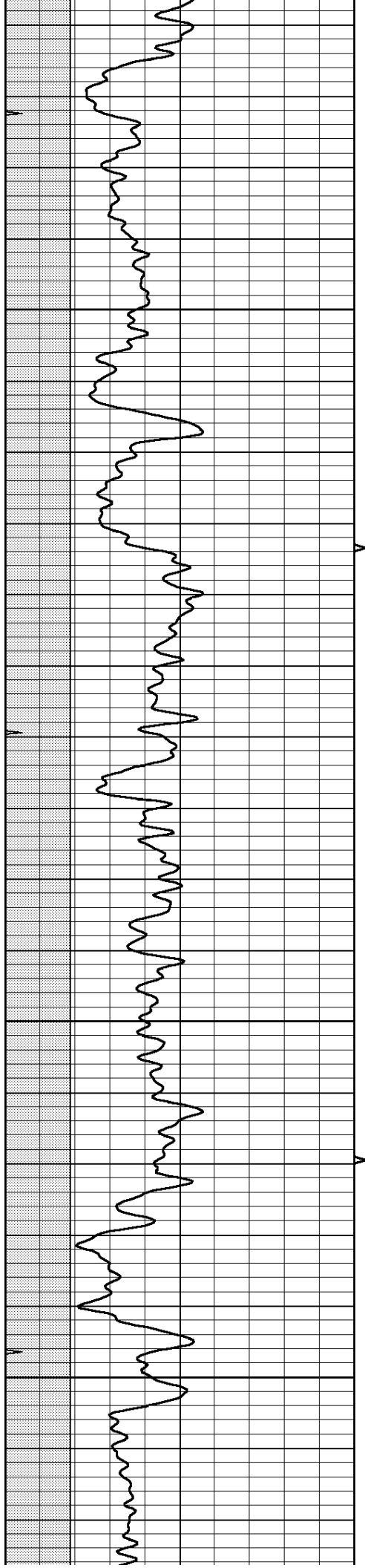
Casedhole Solutions

MAIN SECTION

Database File: 30893ddn.db
 Dataset Pathname: pass6.2
 Presentation Format: _slt
 Dataset Creation: Sat Feb 27 05:20:46 2016 by Calc Open-Cased 090629
 Charted by: Depth in Feet scaled 1:240

0	GAMMA RAY (GAPI)	150	ABHV	140	DELTA TIME (usec/ft)	40
6	CALIPER (in)	16	10 (ft3) 0	30	SONIC POROSITY (pu)	-10
0	MINMK	20	TBHV	0	ITT (msec)	20
			0 (ft3) 10			



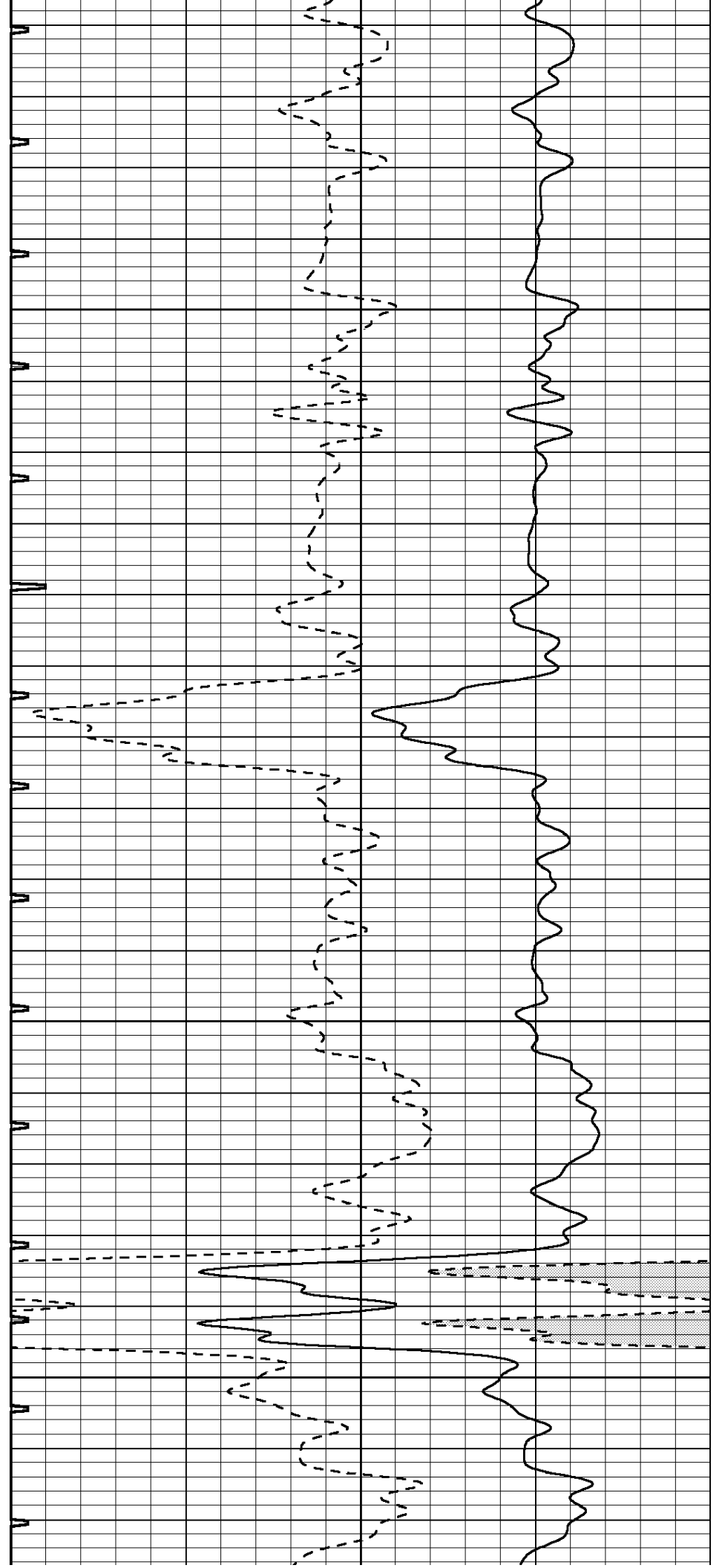


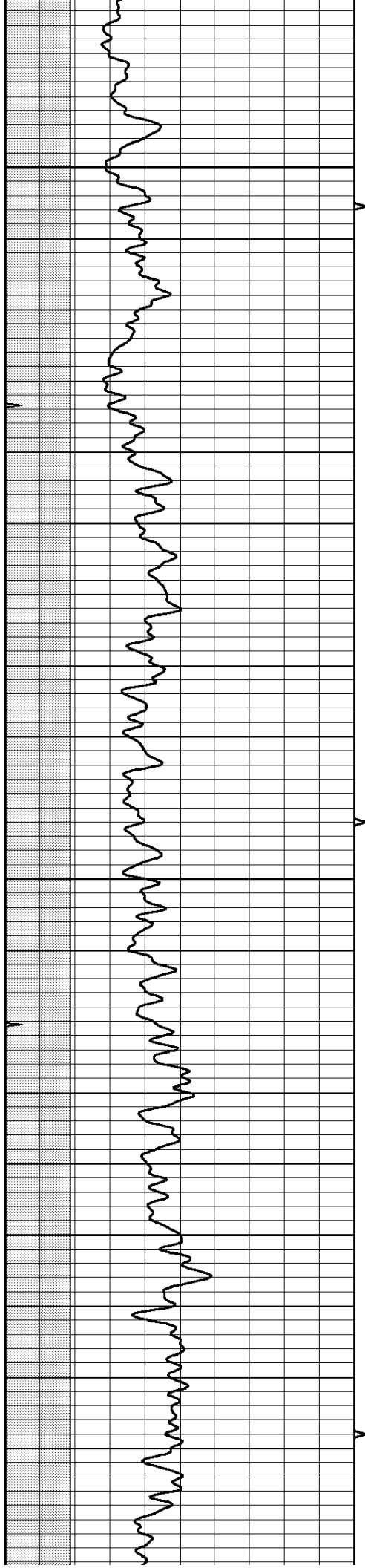
250

300

350

400



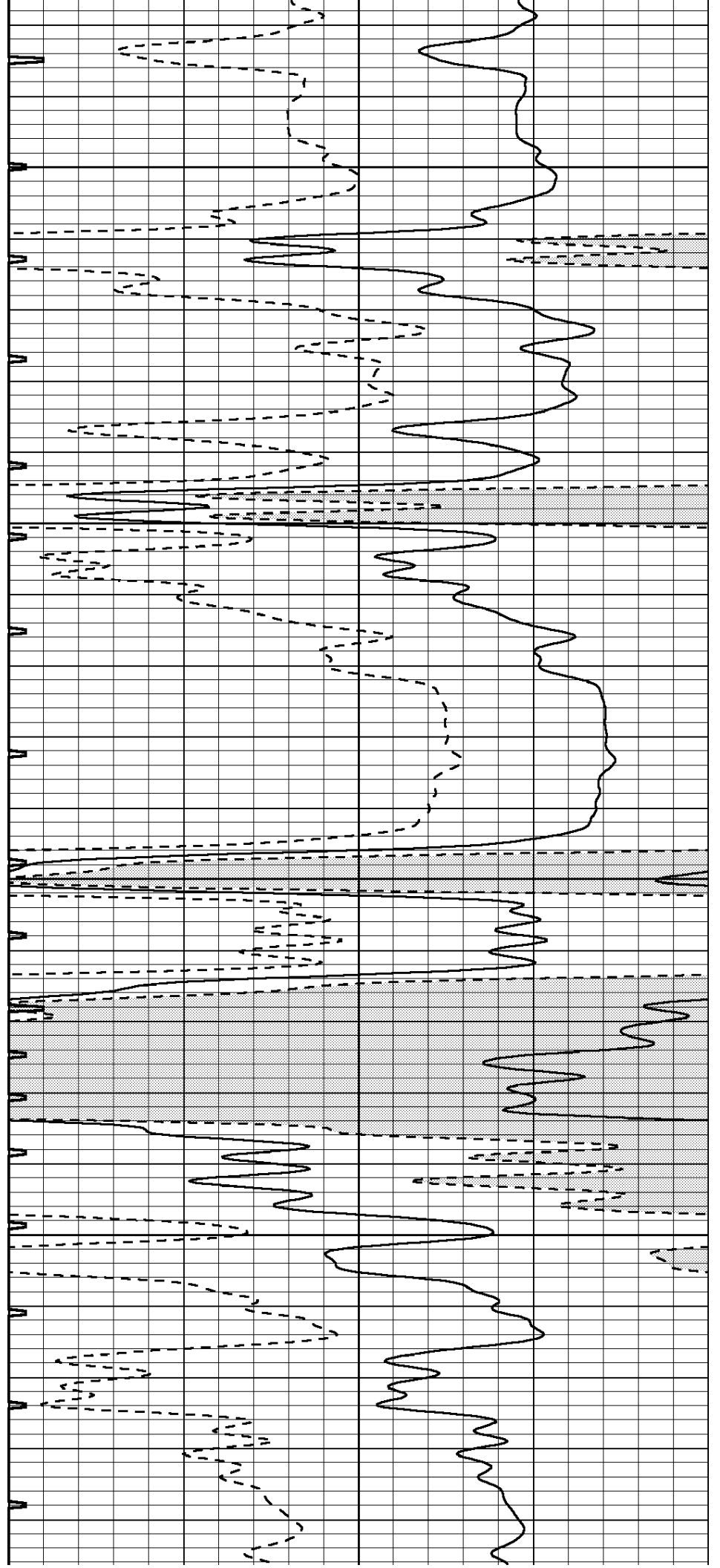


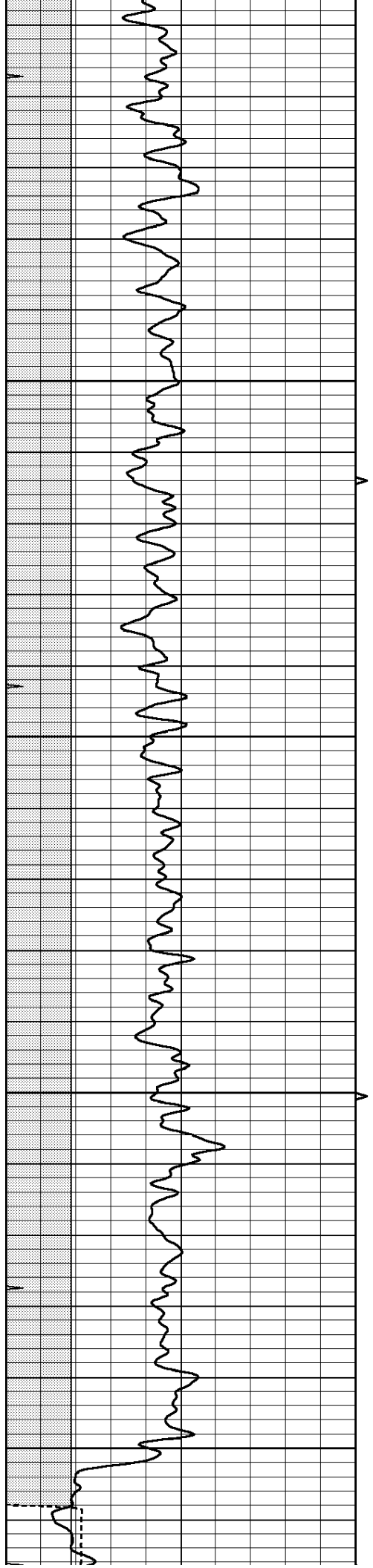
450

500

550

600





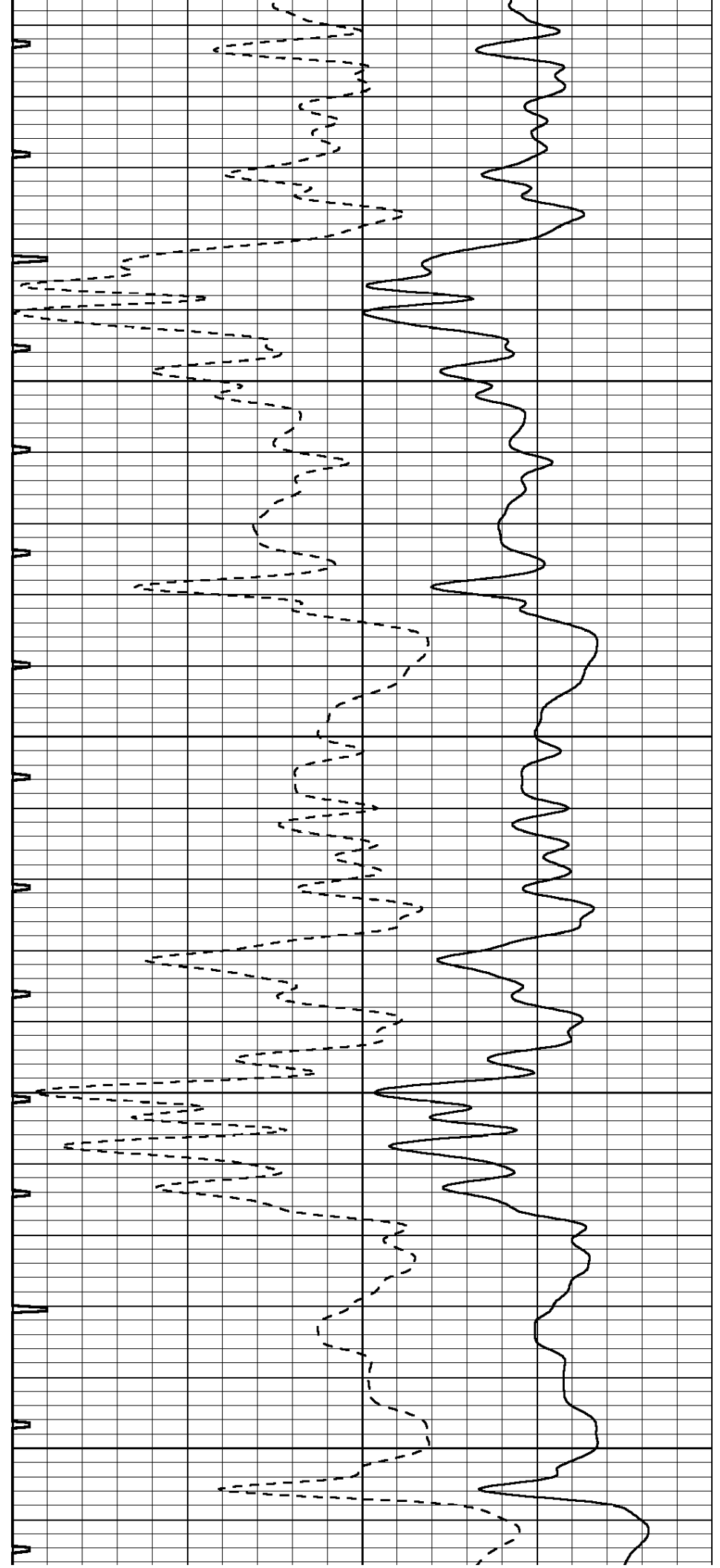
650

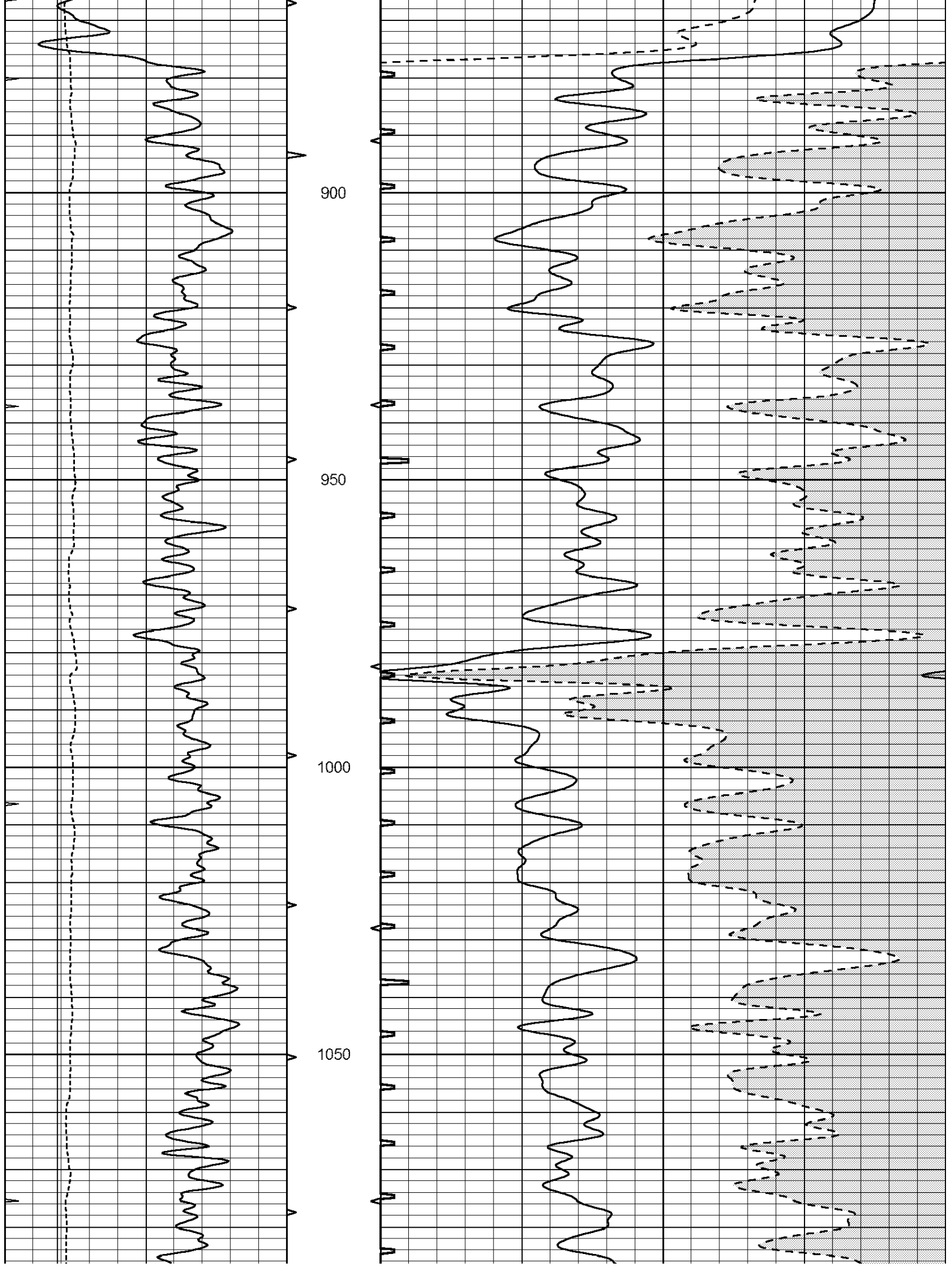
700

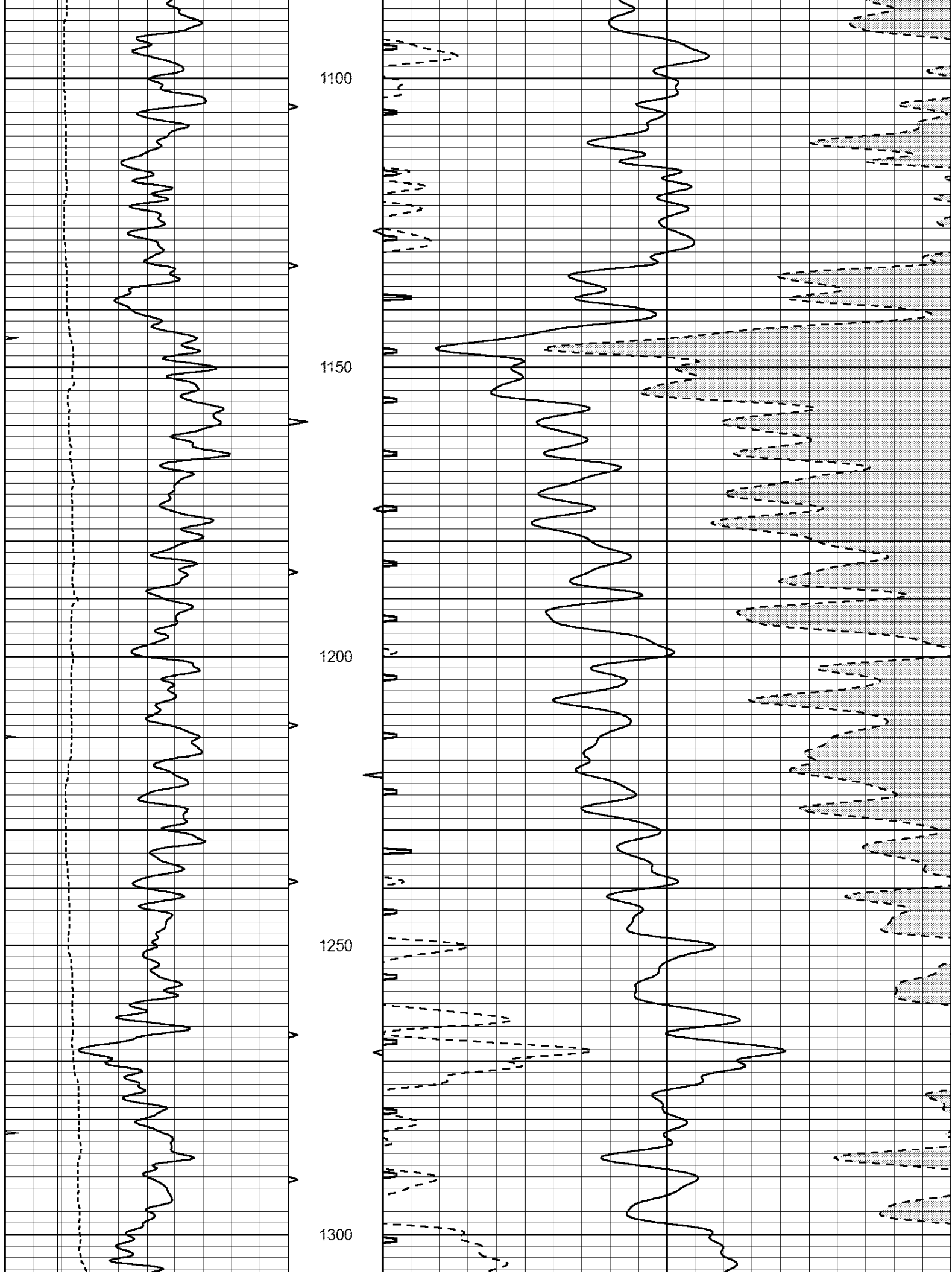
750

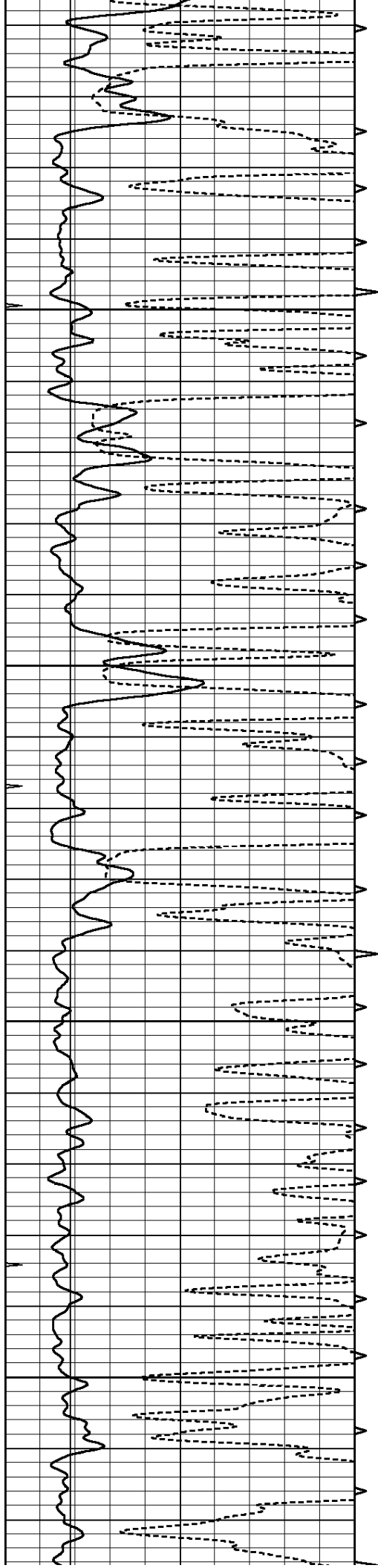
800

850







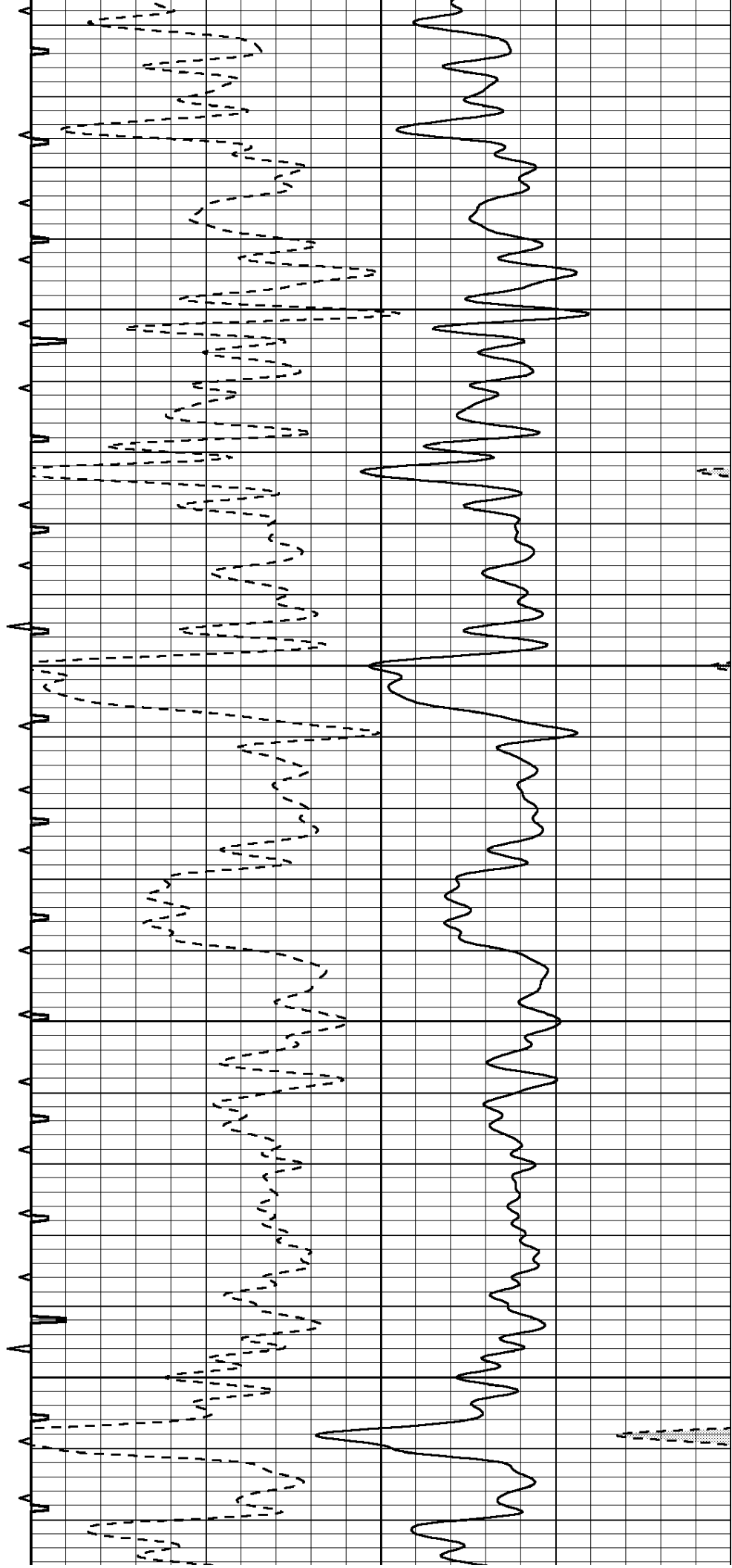


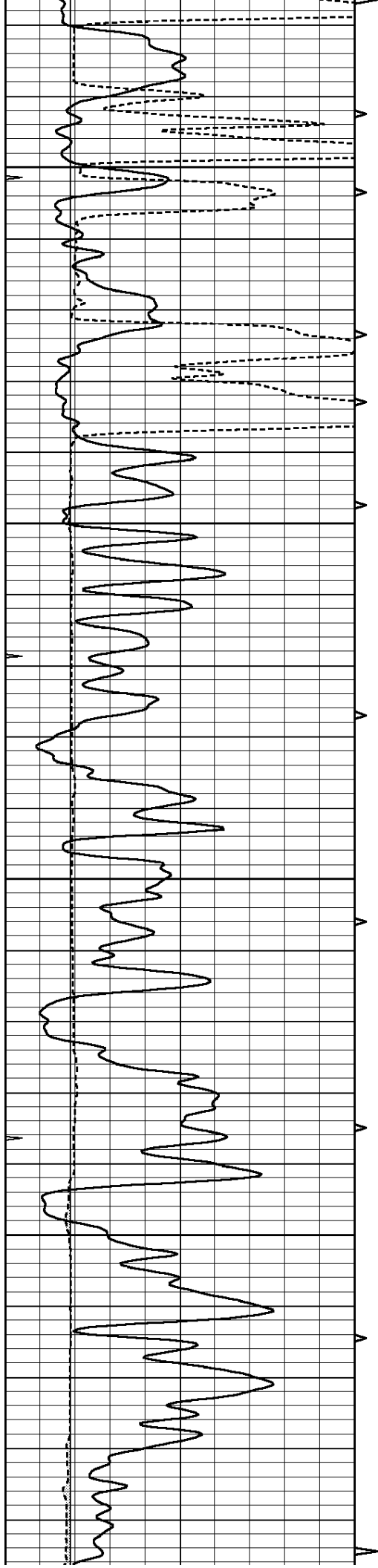
1350

1400

1450

1500



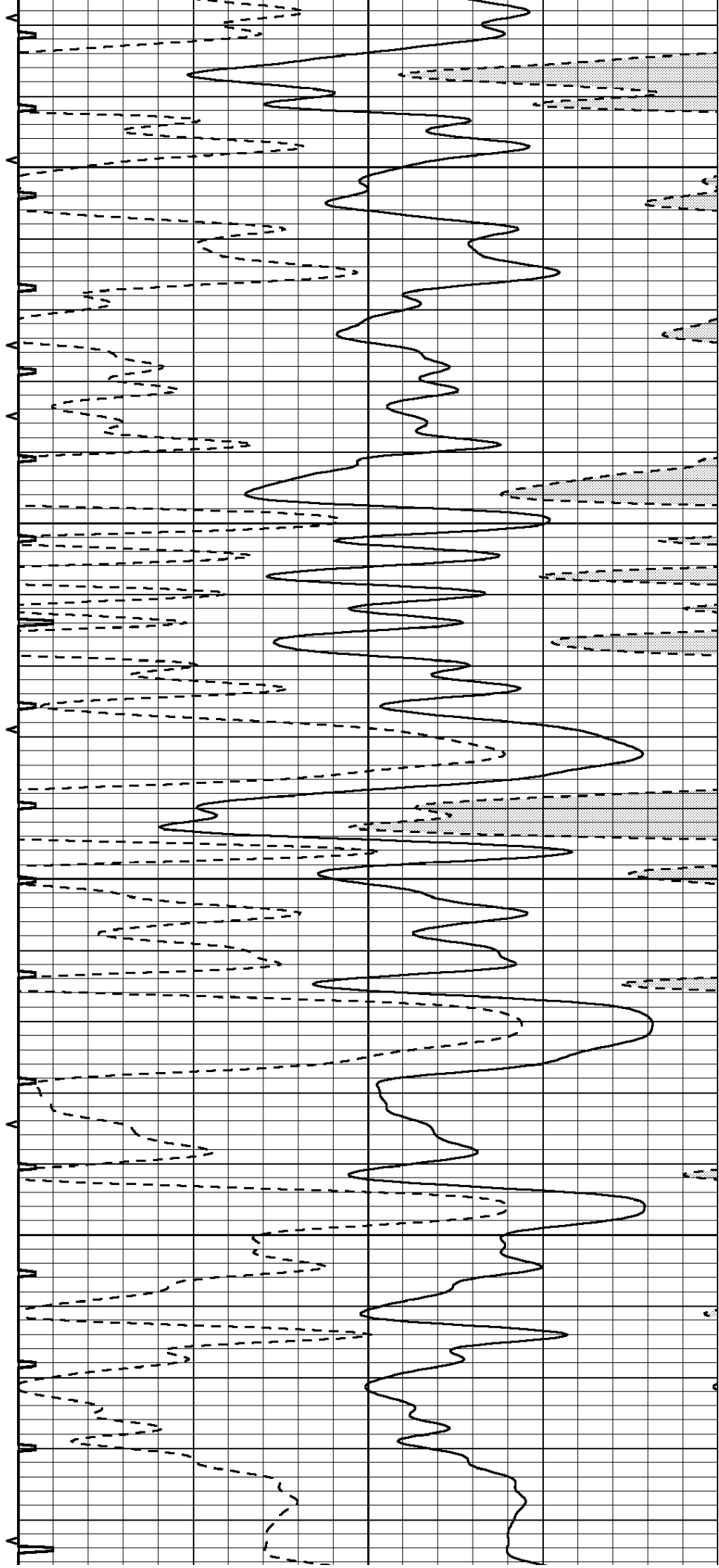


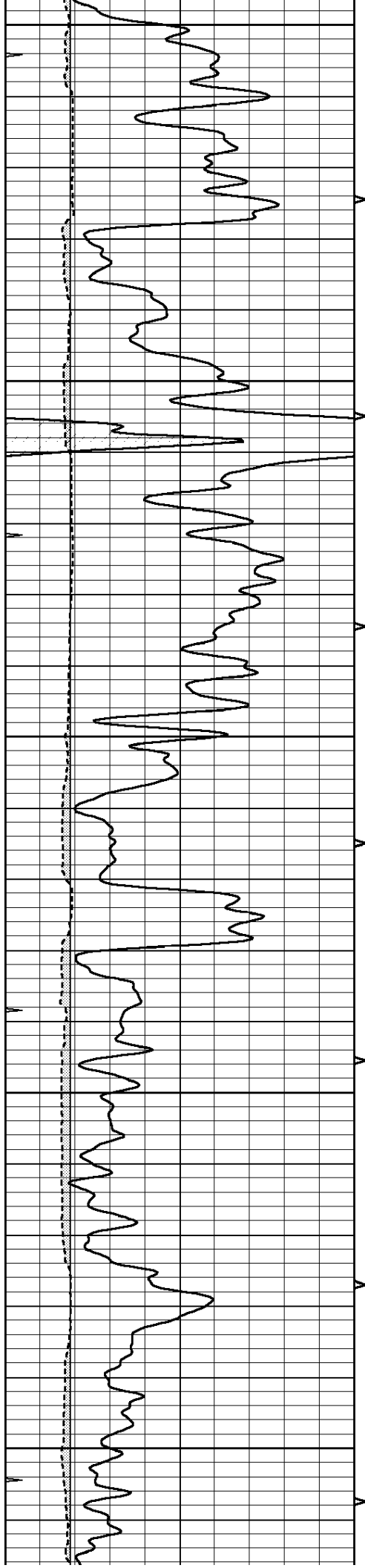
1550

1600

1650

1700





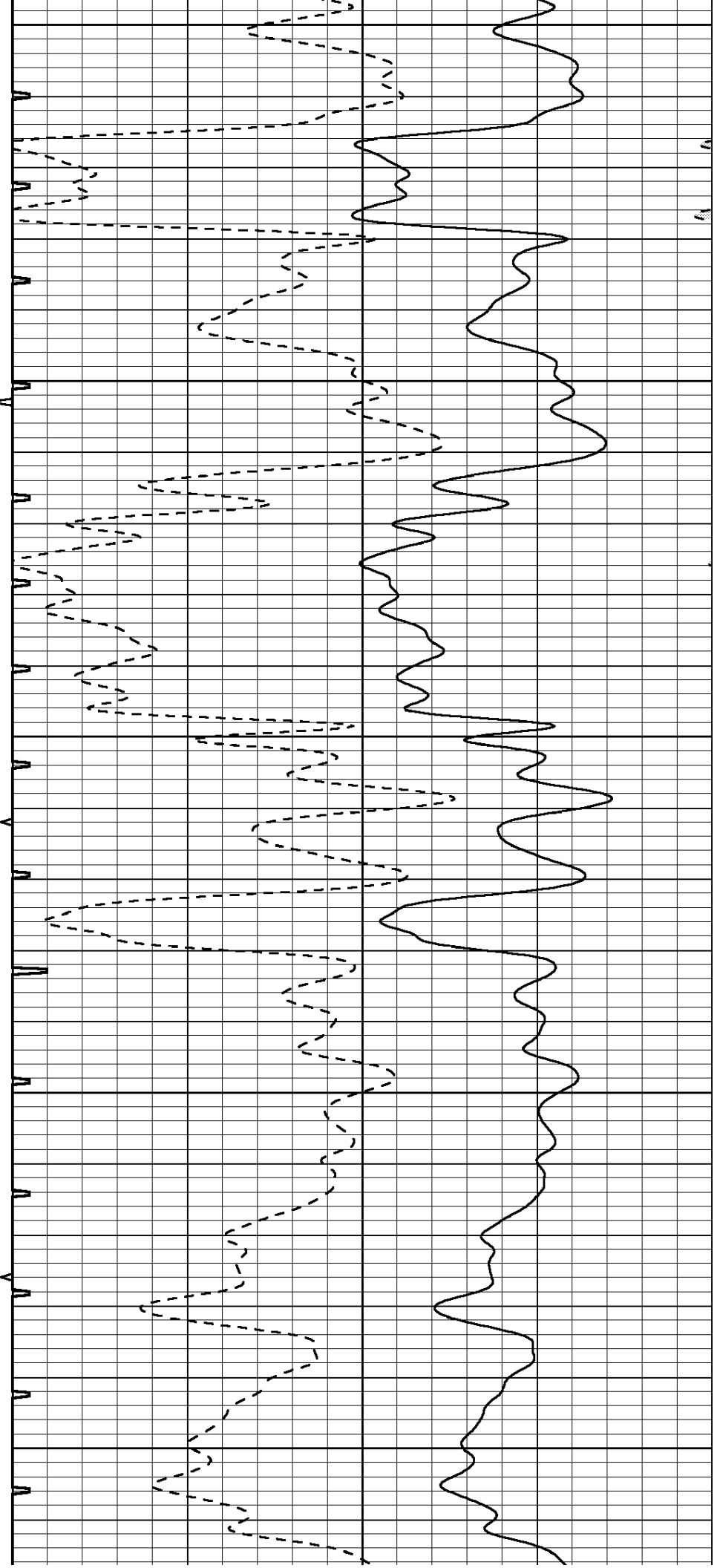
1750

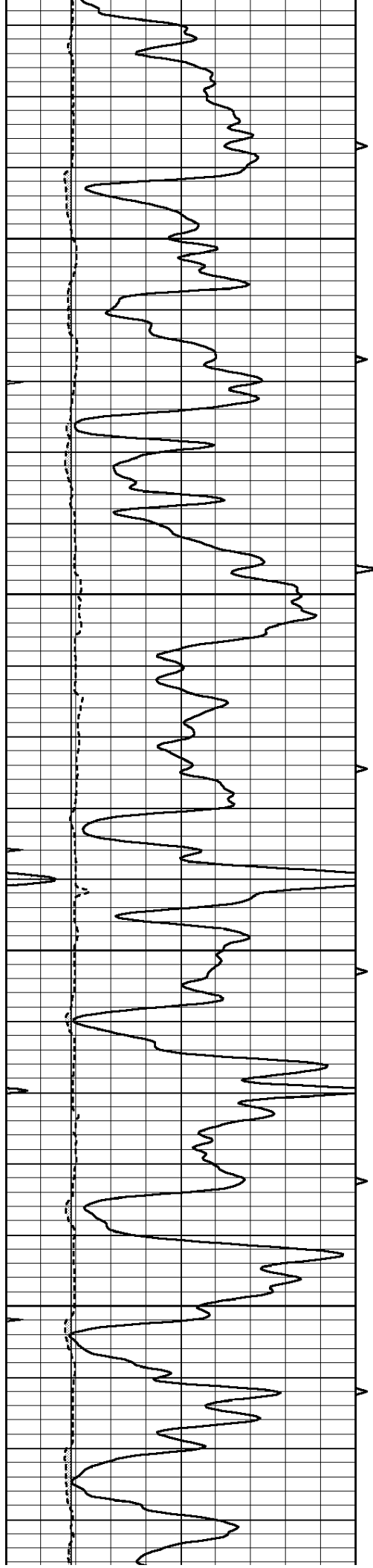
1800

1850

1900

1950



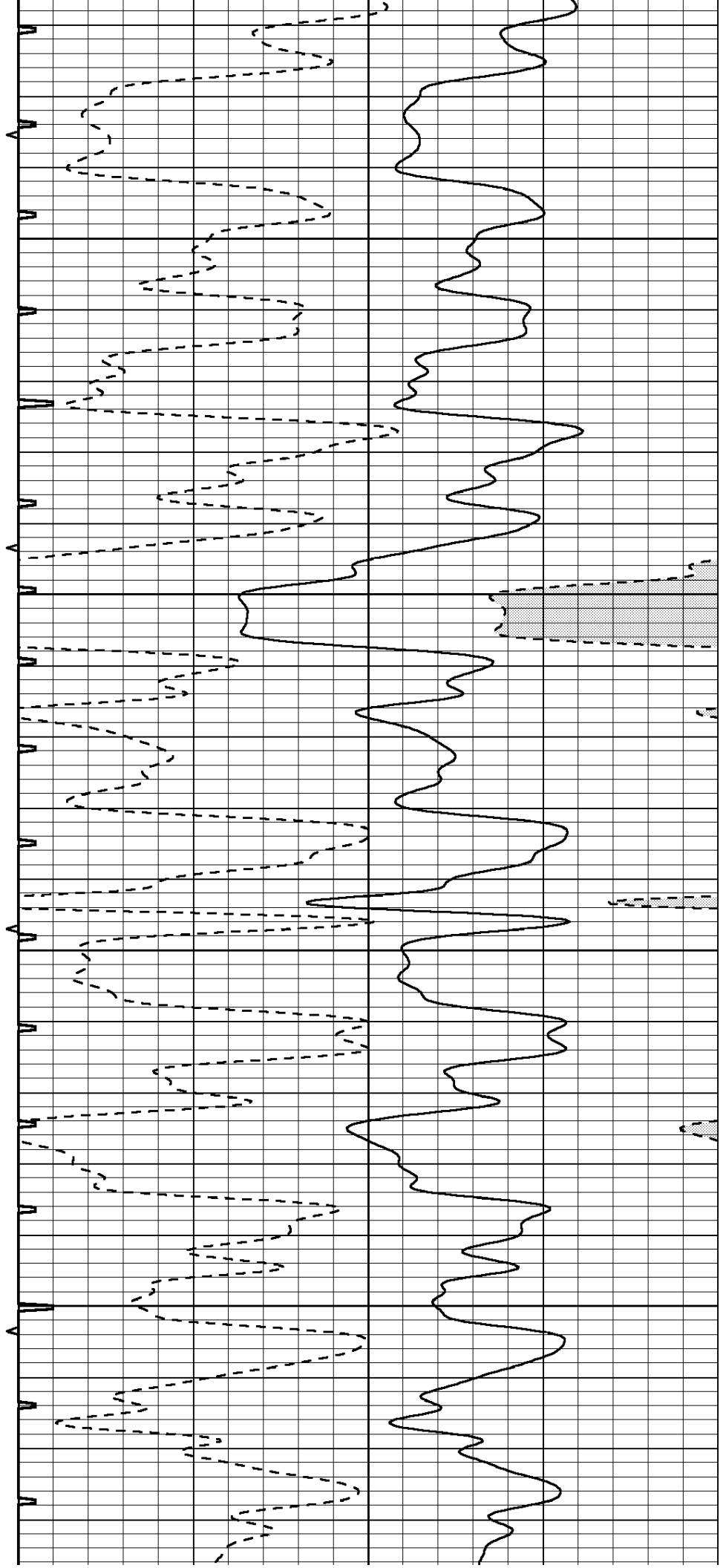


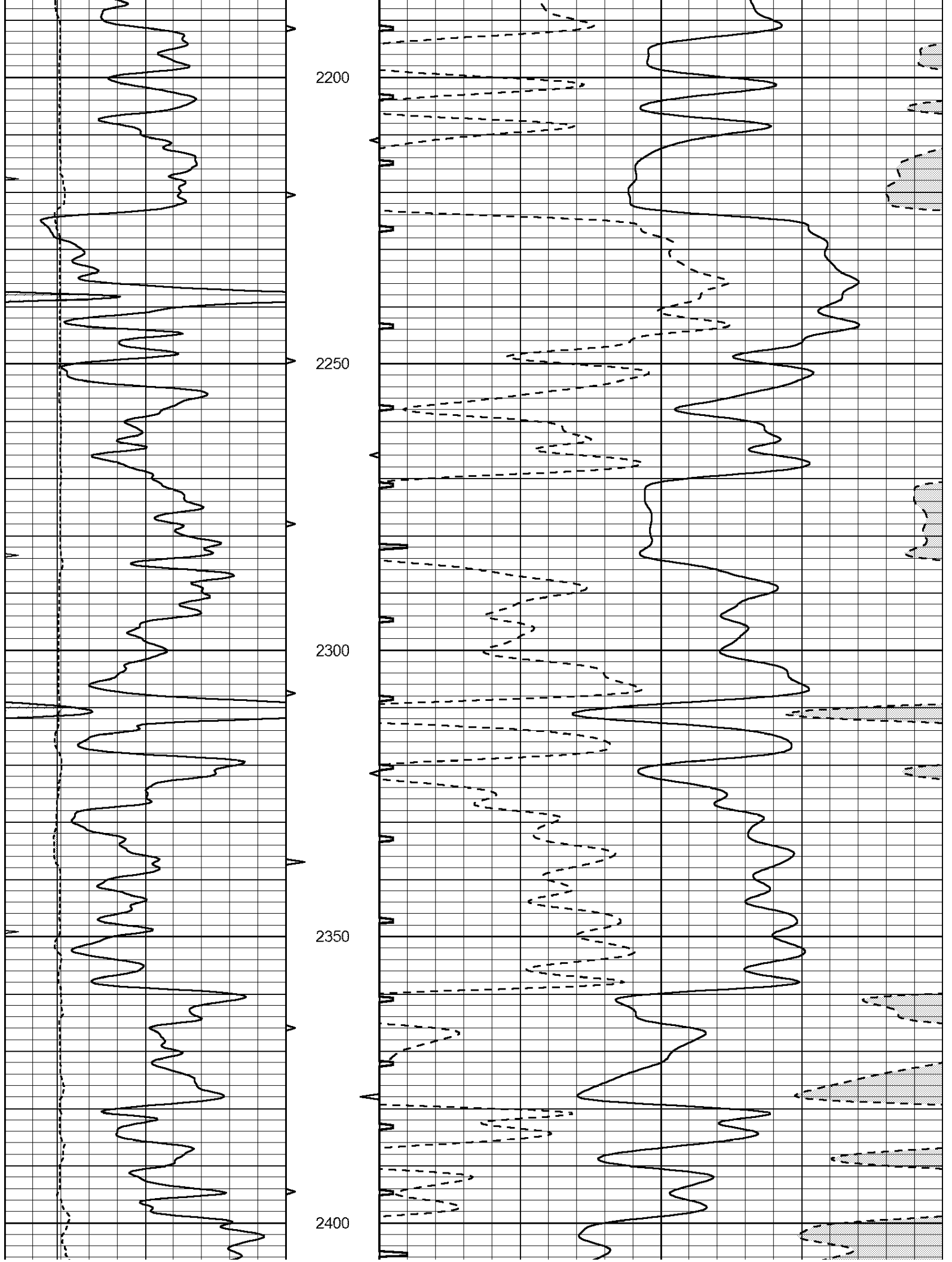
2000

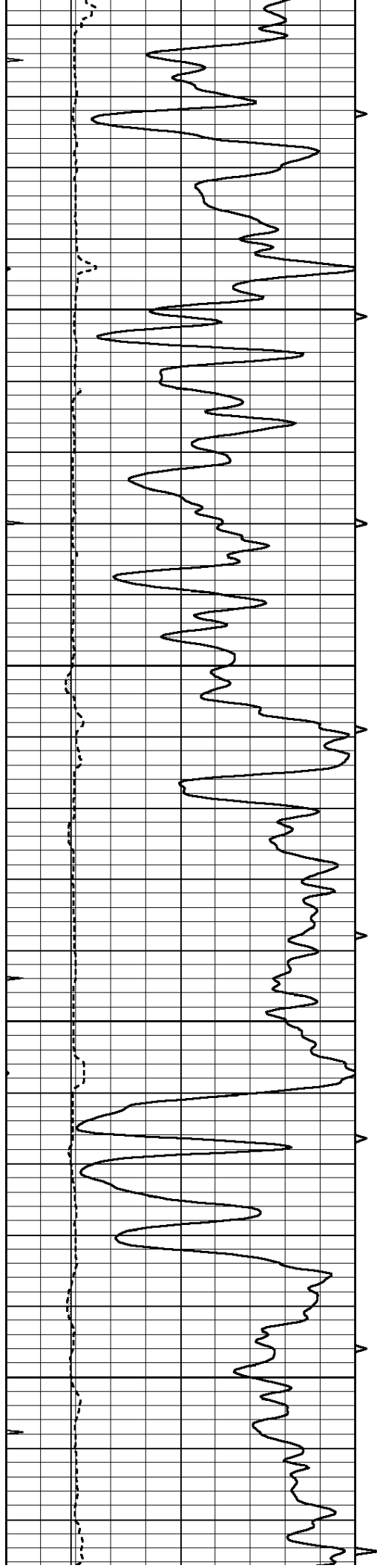
2050

2100

2150





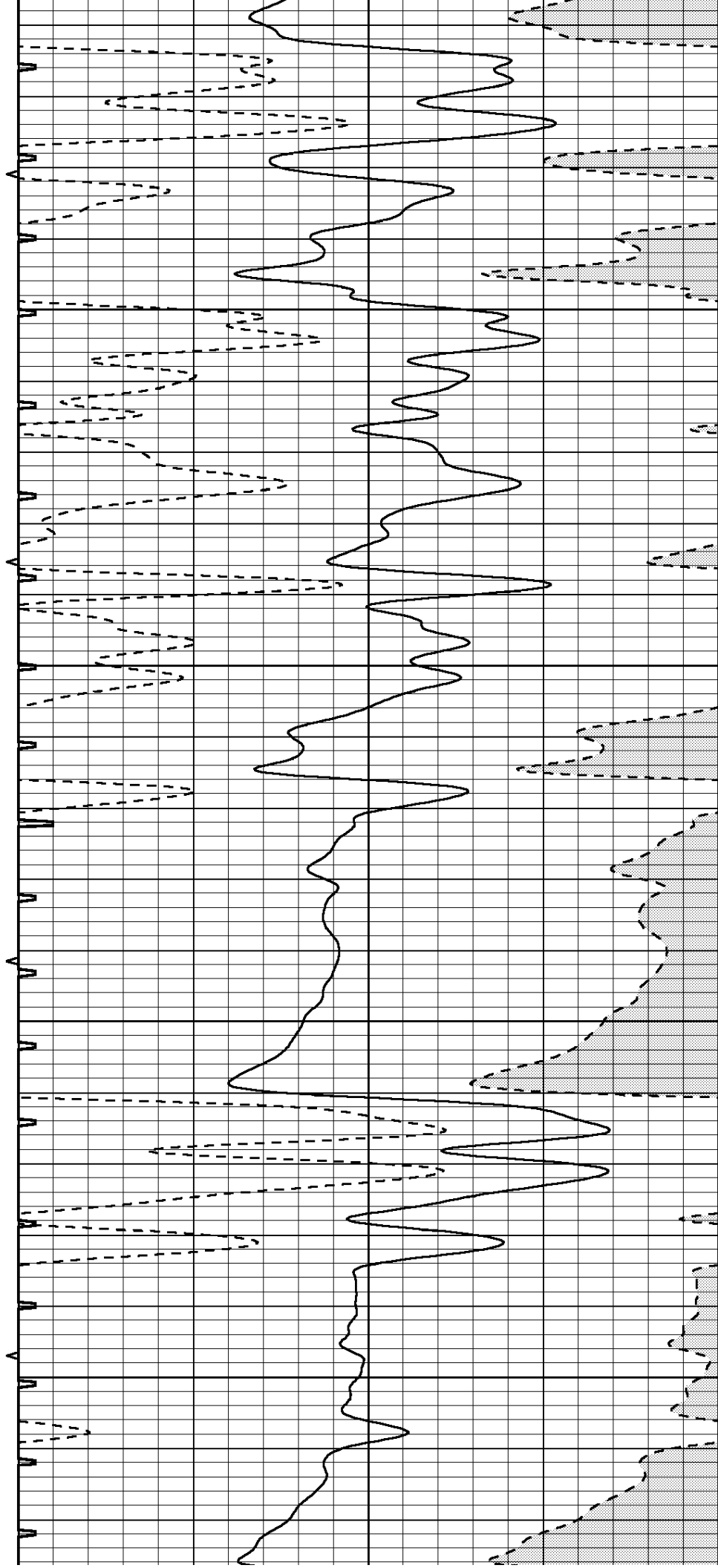


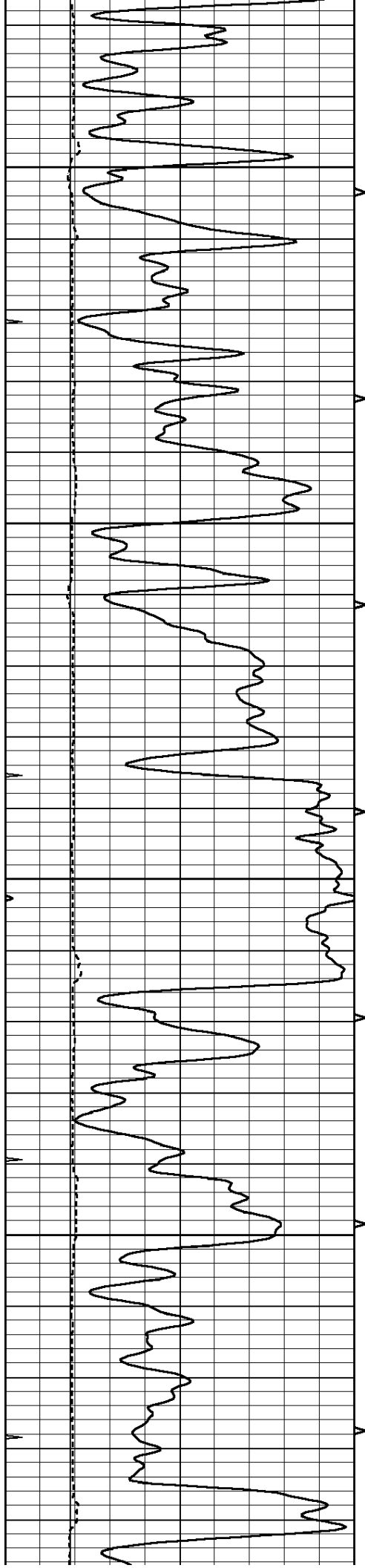
2450

2500

2550

2600



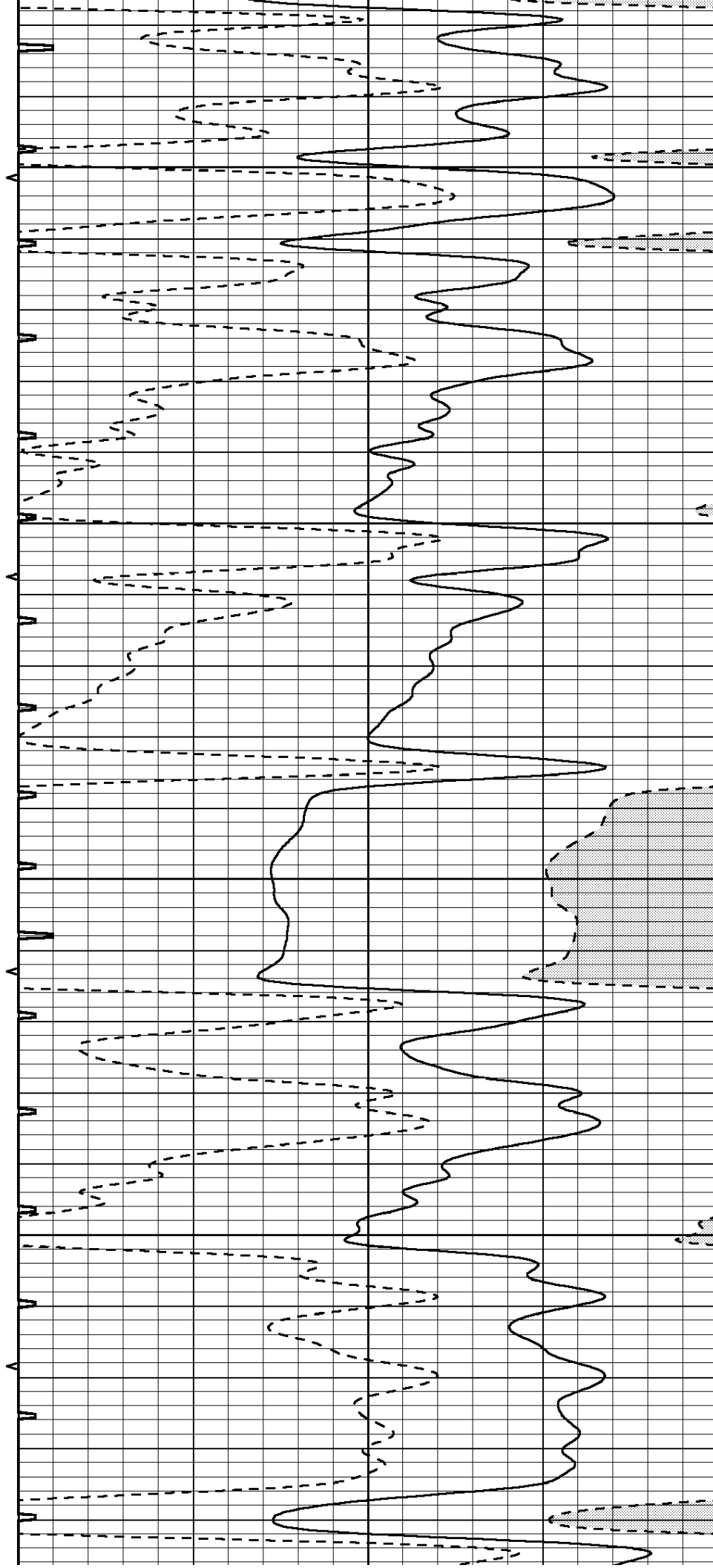


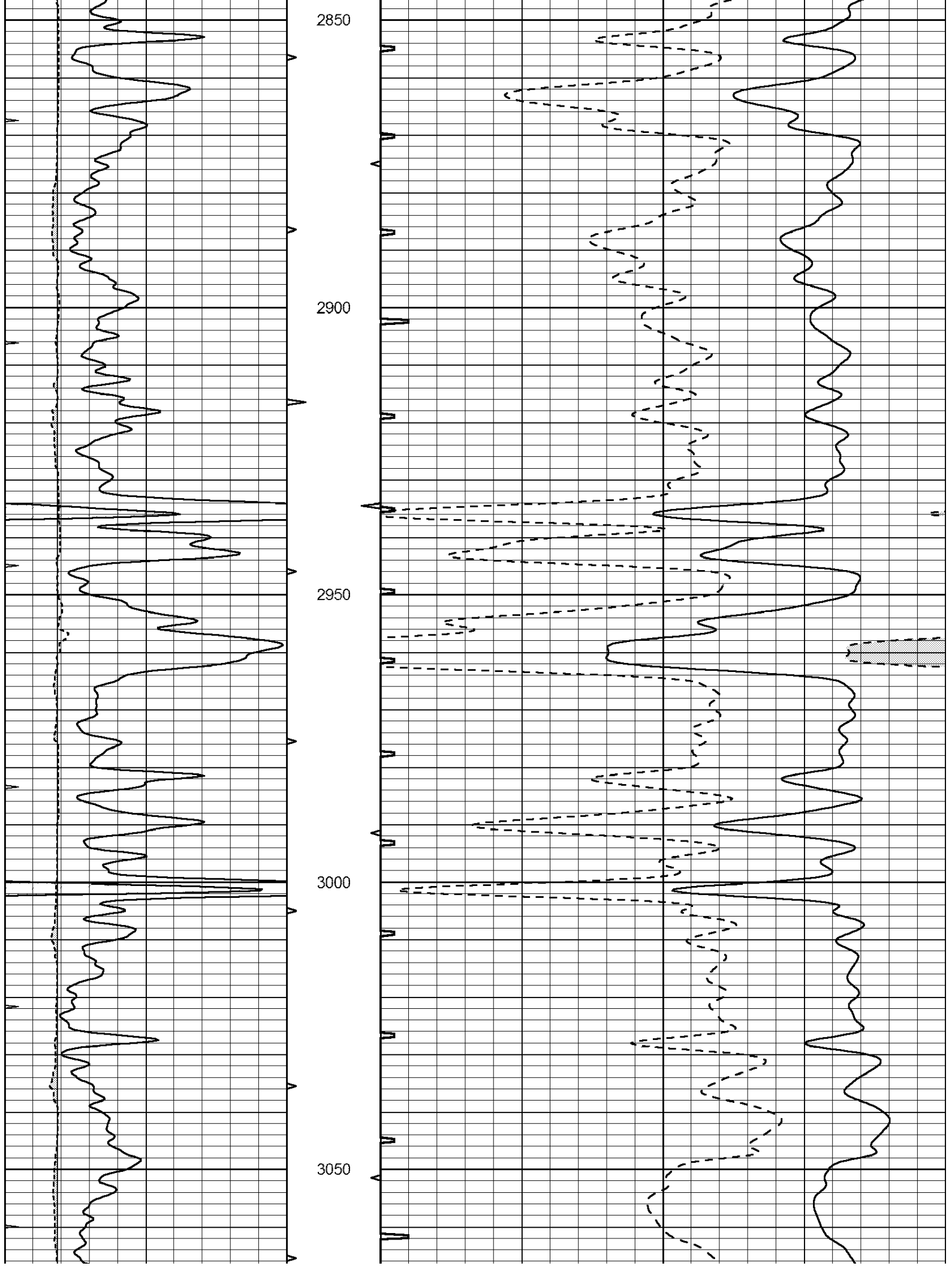
2650

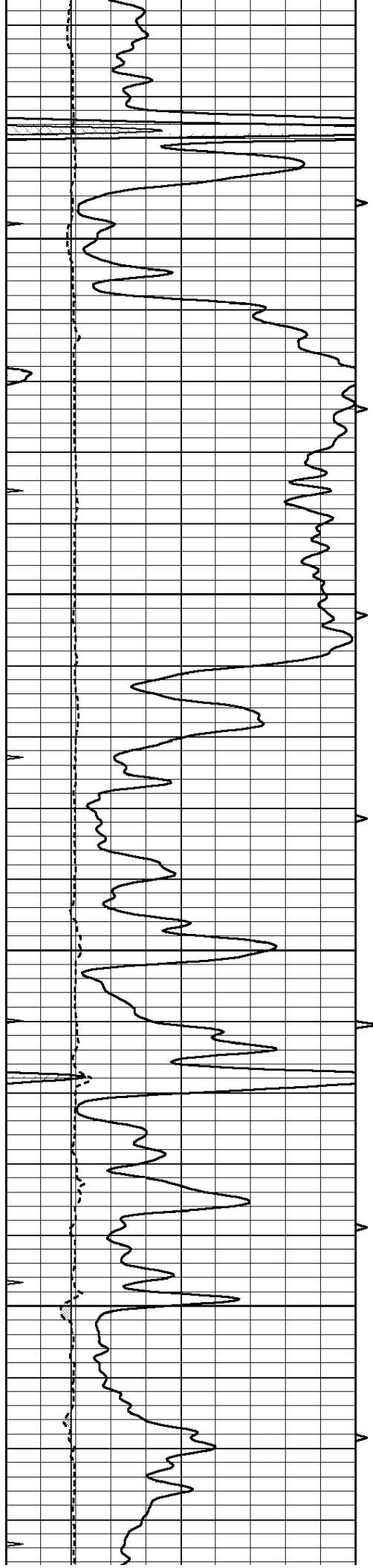
2700

2750

2800





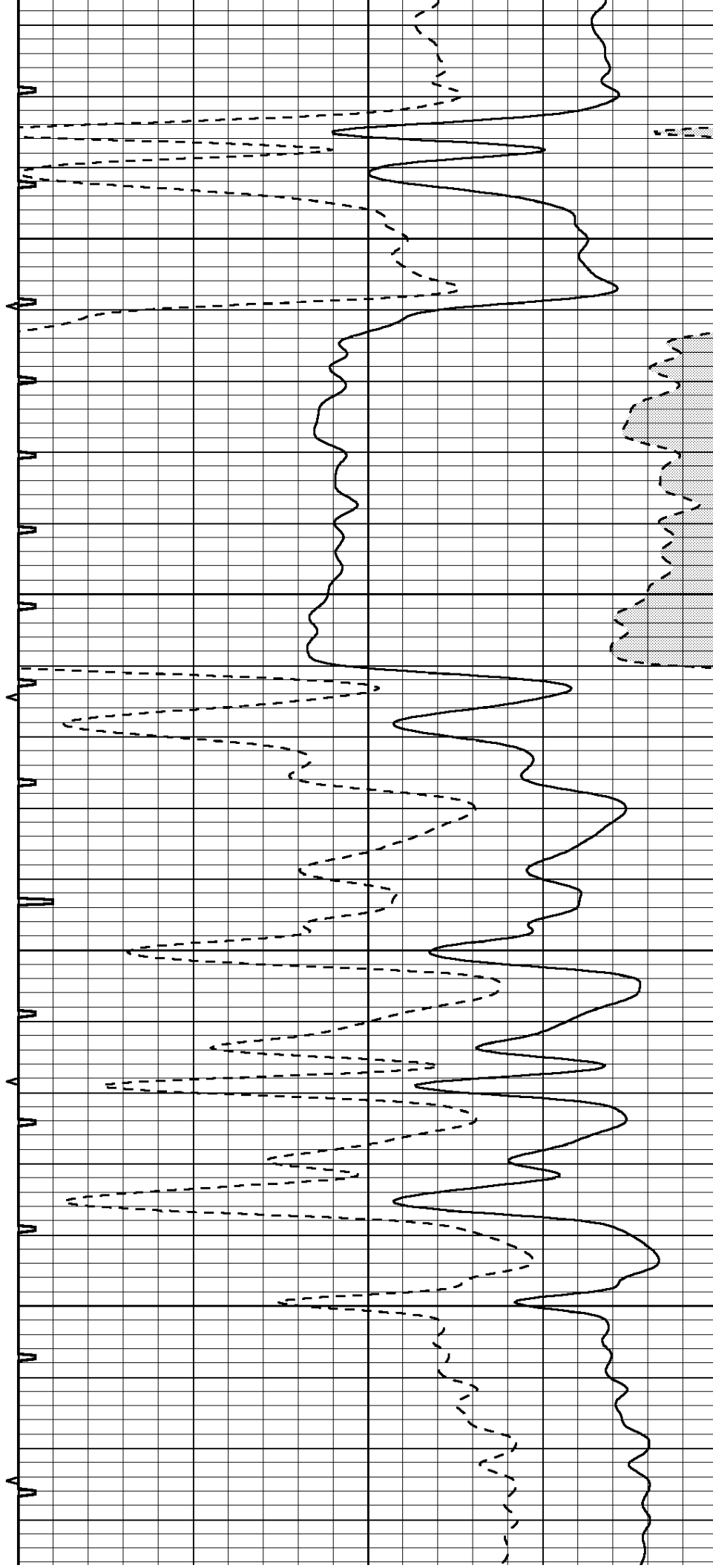


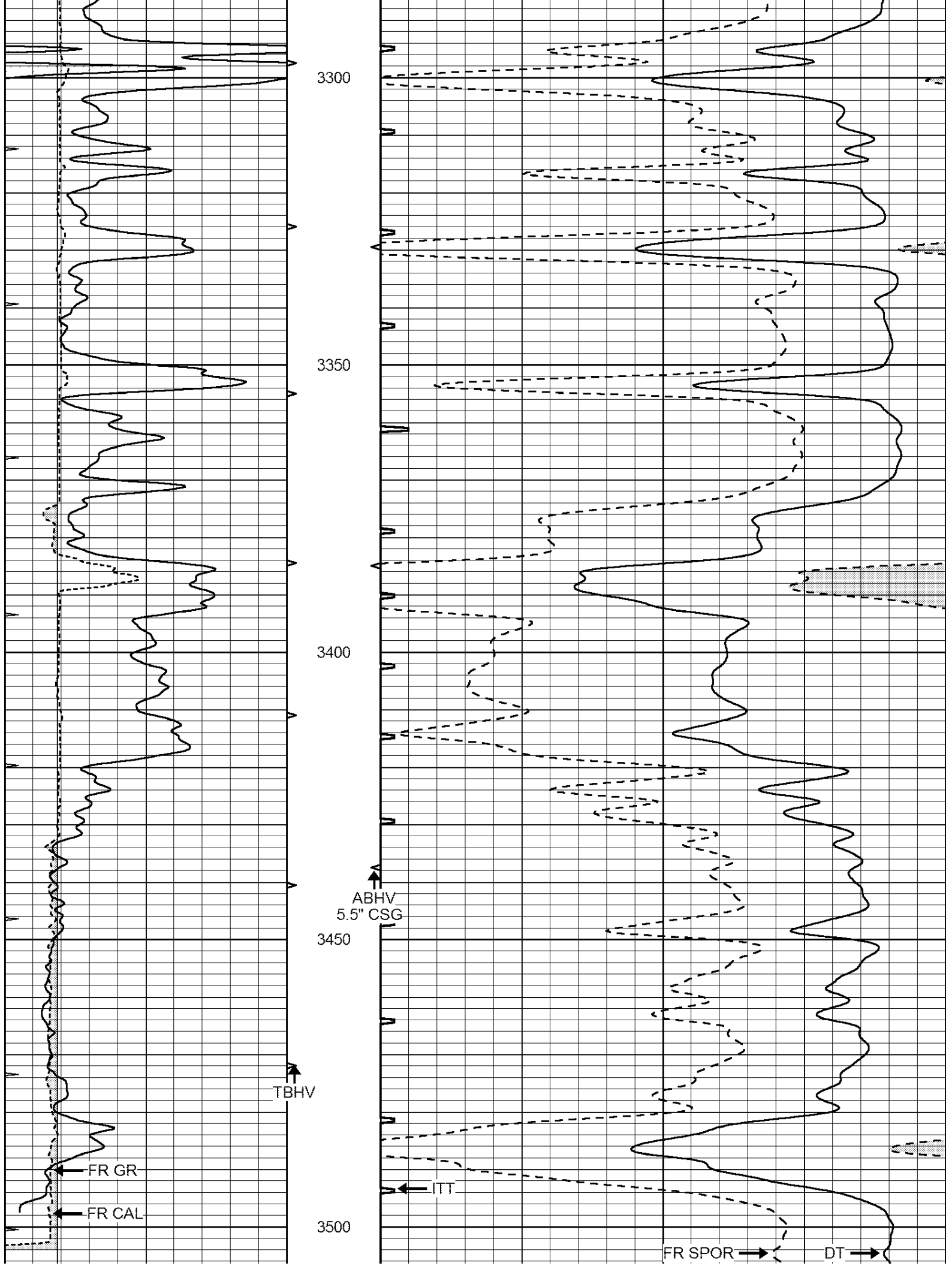
3100

3150

3200

3250





LTD 3520

0	GAMMA RAY (GAPI)	150	ABHV	140	DELTA TIME (usec/ft)	40	
6	CALIPER (in)	16	10 (ft3)	0	30	SONIC POROSITY (pu)	-10
0	MINMK	20	TBHV	0	ITT (msec)	20	
			0 (ft3)	10			

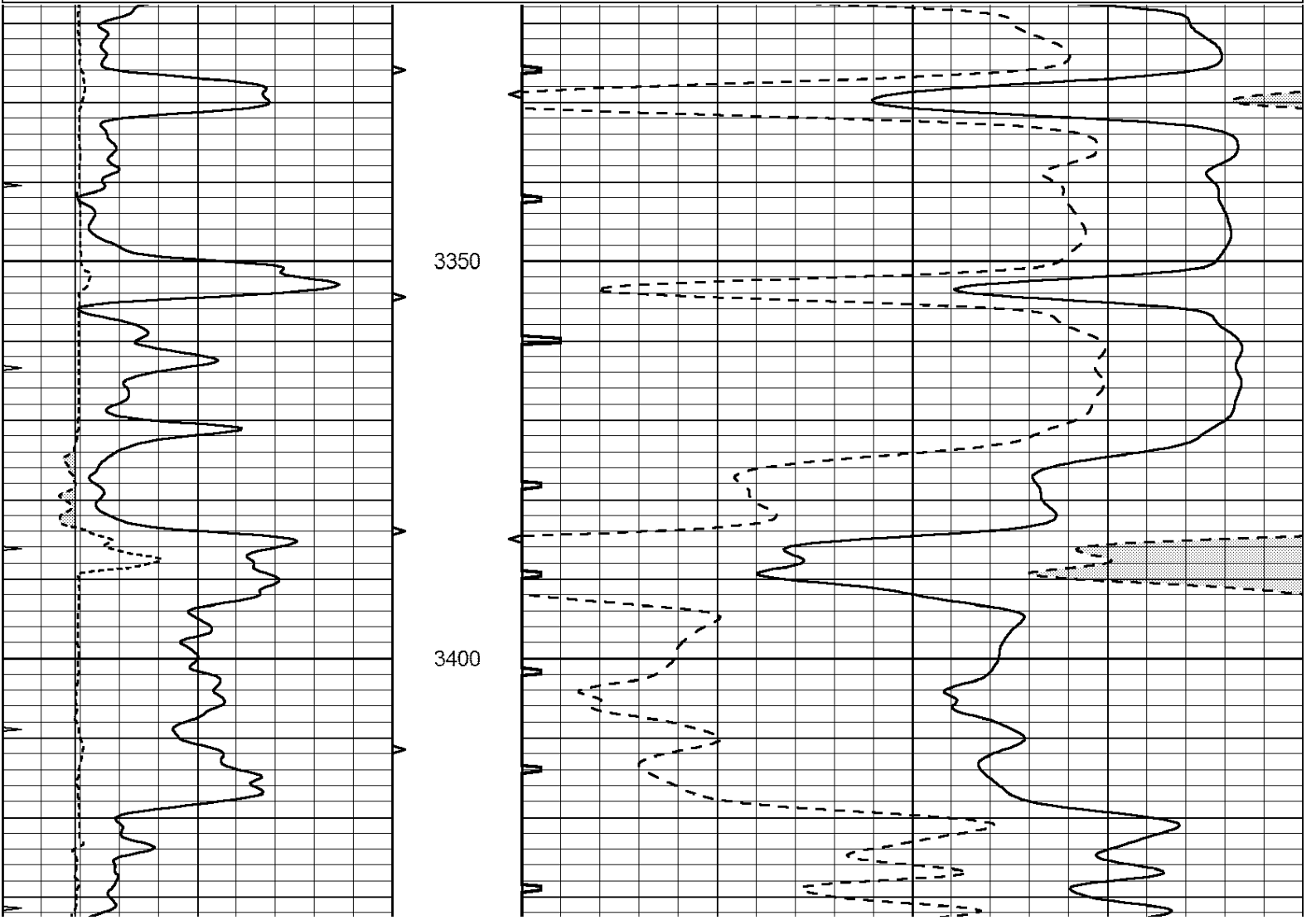


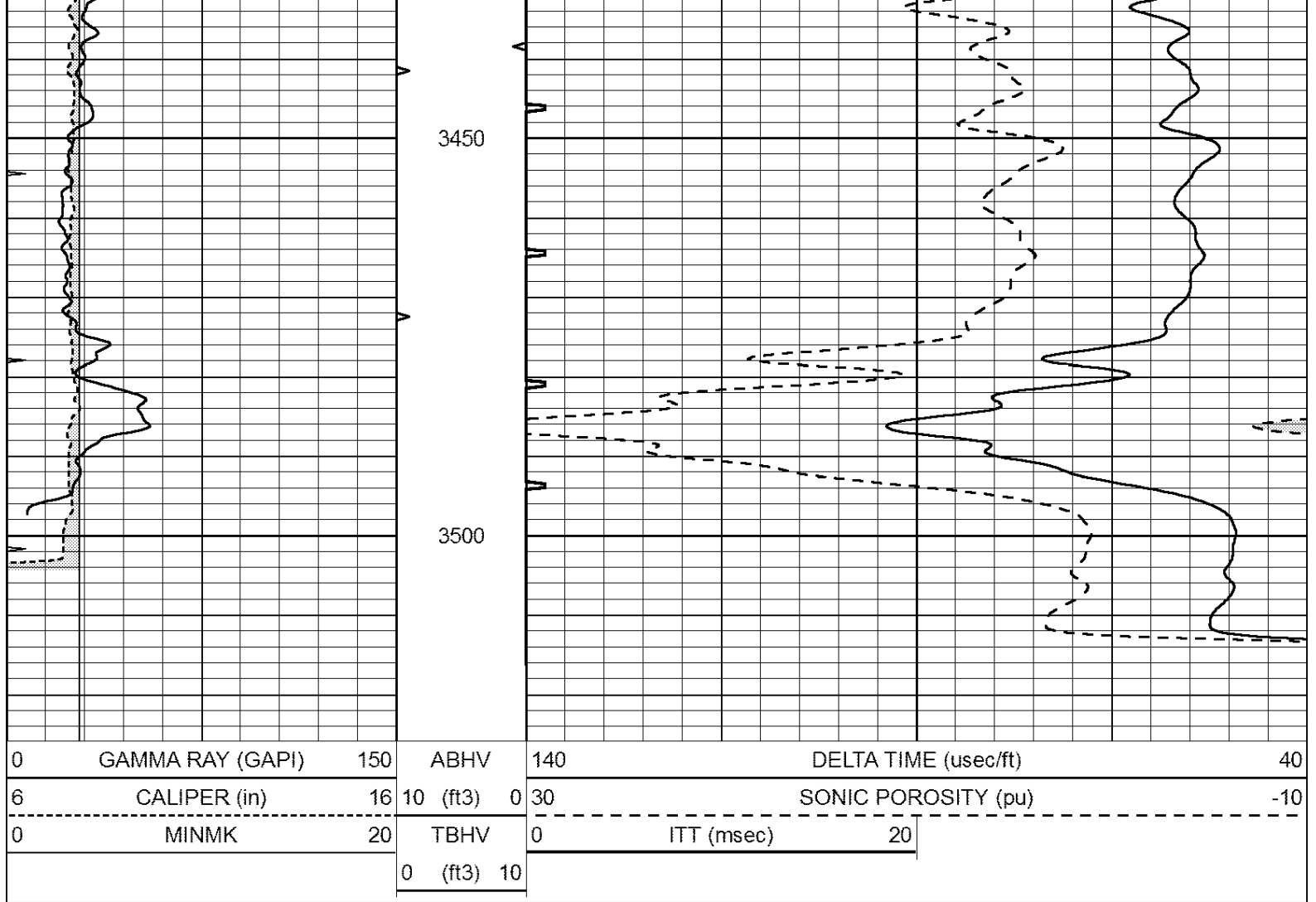
Casedhole Solutions

REPEAT SECTION

Database File: 30893ddn.db
Dataset Pathname: pass5.1
Presentation Format: _slt
Dataset Creation: Sat Feb 27 04:27:58 2016 by Calc Open-Cased 090629
Charted by: Depth in Feet scaled 1:240

0	GAMMA RAY (GAPI)	150	ABHV	140	DELTA TIME (usec/ft)	40	
6	CALIPER (in)	16	10 (ft3)	0	30	SONIC POROSITY (pu)	-10
0	MINMK	20	TBHV	0	ITT (msec)	20	
			0 (ft3)	10			





Calibration Report		
Database File:	30893ddn.db	
Dataset Pathname:	pass5.1	
Dataset Creation:	Sat Feb 27 04:27:58 2016 by Calc Open-Cased 090629	
MICRO Calibration Report		
Serial Number:	MICRO6	
Tool Model:	PROBE	
Performed:	Wed Aug 26 00:34:46 2015	
Caliper Calibration:	Gain=3.960	Offset=4.601
References	Low Cal	High Cal
Readings	7.000	14.000
	0.555	2.323
1.5" Calibration:	Gain=38.075	Offset=-0.400
References	Low Cal	High Cal
Readings	0.000	20.000
	0.004	1.196
2" Calibration:	Gain=48.000	Offset=-1.000
References	Low Cal	High Cal
Readings	0.000	20.000
	0.006	0.913

Gamma Ray Calibration Report		

Serial Number: GR6
Tool Model: OPEN
Performed: Thu Nov 12 05:47:01 2015

Calibrator Value: 150.0 GAPI

Background Reading: 0.0 cps

Calibrator Reading: 276.0 cps

Sensitivity: 0.4500 GAPI/cps