



Casedhole Solutions

COMPENSATED DENSITY/NEUTRON LOG

Company SHELBY RESOURCES, LLC.

Well MP #1-23

Field

County BARTON

State KANSAS

Location:

980' FNL & 1754' FWL

API # : 15-009-26139-00-00

Other Services
DIL/MEL
SONIC

SEC 23 TWP 18S RGE 14W

Permanent Datum GROUND LEVEL Elevation 1906
Log Measured From KELLY BUSHING 11' A.G.L.
Drilling Measured From KELLY BUSHING

Elevation
K.B. 1917
D.F. 1915
G.L. 1906

Date 2/27/16

Run Number ONE

Depth Driller 3520

Depth Logger 3520

Bottom Logged Interval 3496

Top Log Interval 2800

Casing Driller 8 5/8" @ 857

Casing Logger 857

Bit Size 7 7/8"

Type Fluid in Hole CHEMICAL MUD

Density / Viscosity 9.3/59

pH / Fluid Loss 10.0/7.2

Source of Sample FLOWLINE

Rm @ Meas. Temp .80 @ 55F

Rmt @ Meas. Temp .60 @ 55F

Rmc @ Meas. Temp .96 @ 55F

Source of Rmf / Rmc MEASUREMENT

Rm @ BHT .39 @ 112F

Time Circulation Stopped 2 HOURS

Time Logger on Bottom 112F

Maximum Recorded Temperature 4010

Equipment Number HAYS, KANSAS

Location JASON CAPPELLUCCI

Recorded By JEREMY SCHWARTZ

Witnessed By

<<< Fold Here >>>

All interpretations are opinions based on inferences from electrical or other measurements and we cannot and do not guarantee the accuracy or correctness of any interpretation, and we shall not, except in the case of gross or willful negligence on our part, be liable or responsible for any loss, costs, damages, or expenses incurred or sustained by anyone resulting from any interpretation made by any of our officers, agents or employees. These interpretations are also subject to our general terms and conditions set out in our current Price Schedule.

Comments

THANK YOU FOR USING CASEDHOLE SOLUTIONS, HAYS, KS. (785) 628-6395
DIRECTIONS:
RUSSELL, KS. - SOUTH TO HWY 4 INTERSECTION - SOUTH TO THE CURVE EAST
1/4 EAST - SOUTH INTO

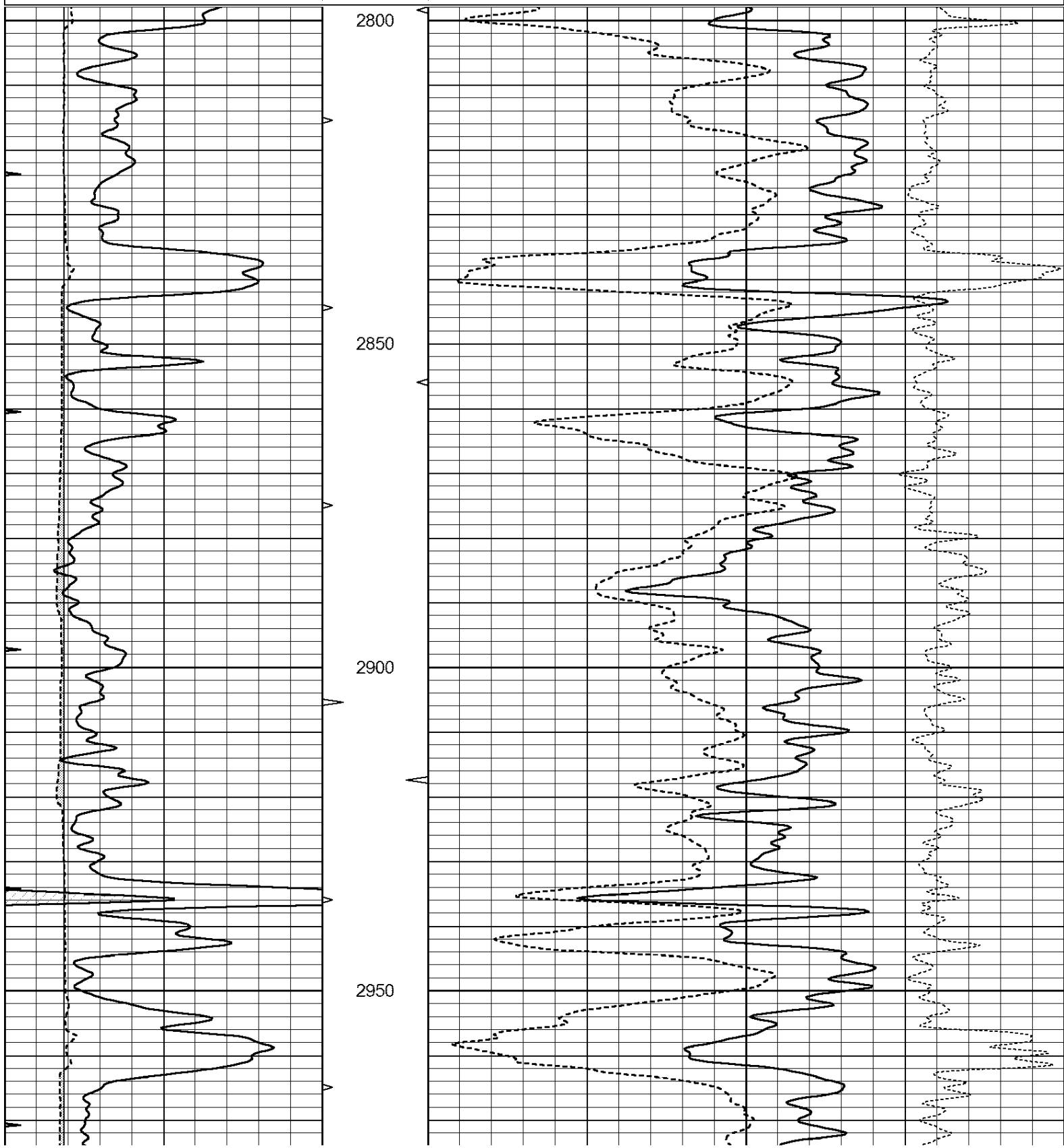


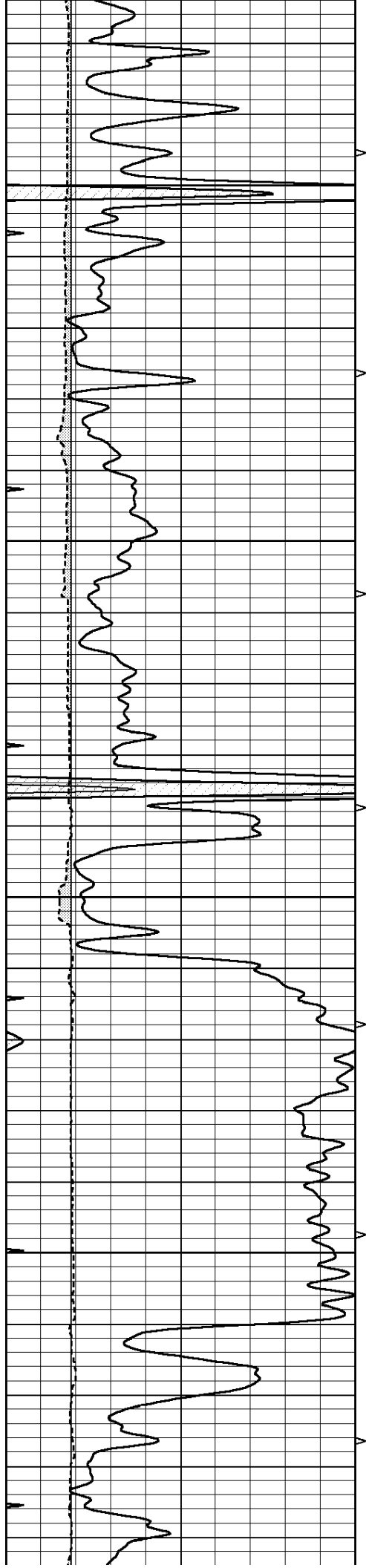
Casedhole Solutions

MAIN SECTION

Database File: 30893ddn.db
 Dataset Pathname: pass3.1
 Presentation Format: den_neu
 Dataset Creation: Sat Feb 27 02:29:03 2016 by Calc Open-Cased 090629
 Charted by: Depth in Feet scaled 1:240

0	GAMMA RAY (GAPI)	150	ABHV	30	COMPENSATED DENSITY (pu)	-10
6	CALIPER (in)	16	10 (ft3)	0 30	COMPENSATED NEUTRON (pu)	-10
0	MINMK	20	TBHV		-0.25 CORRECTION (g/cc)	0.25
			0 (ft3)	10		



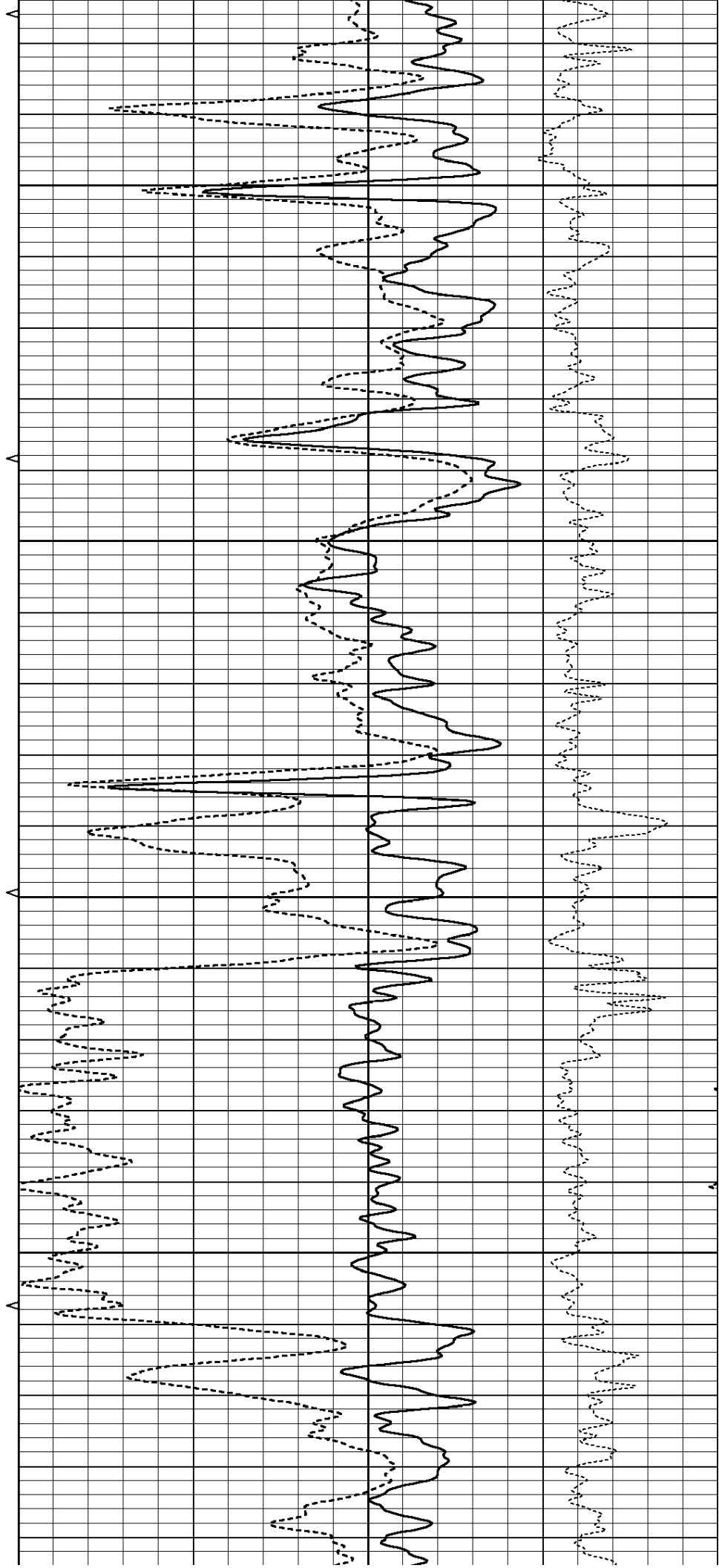


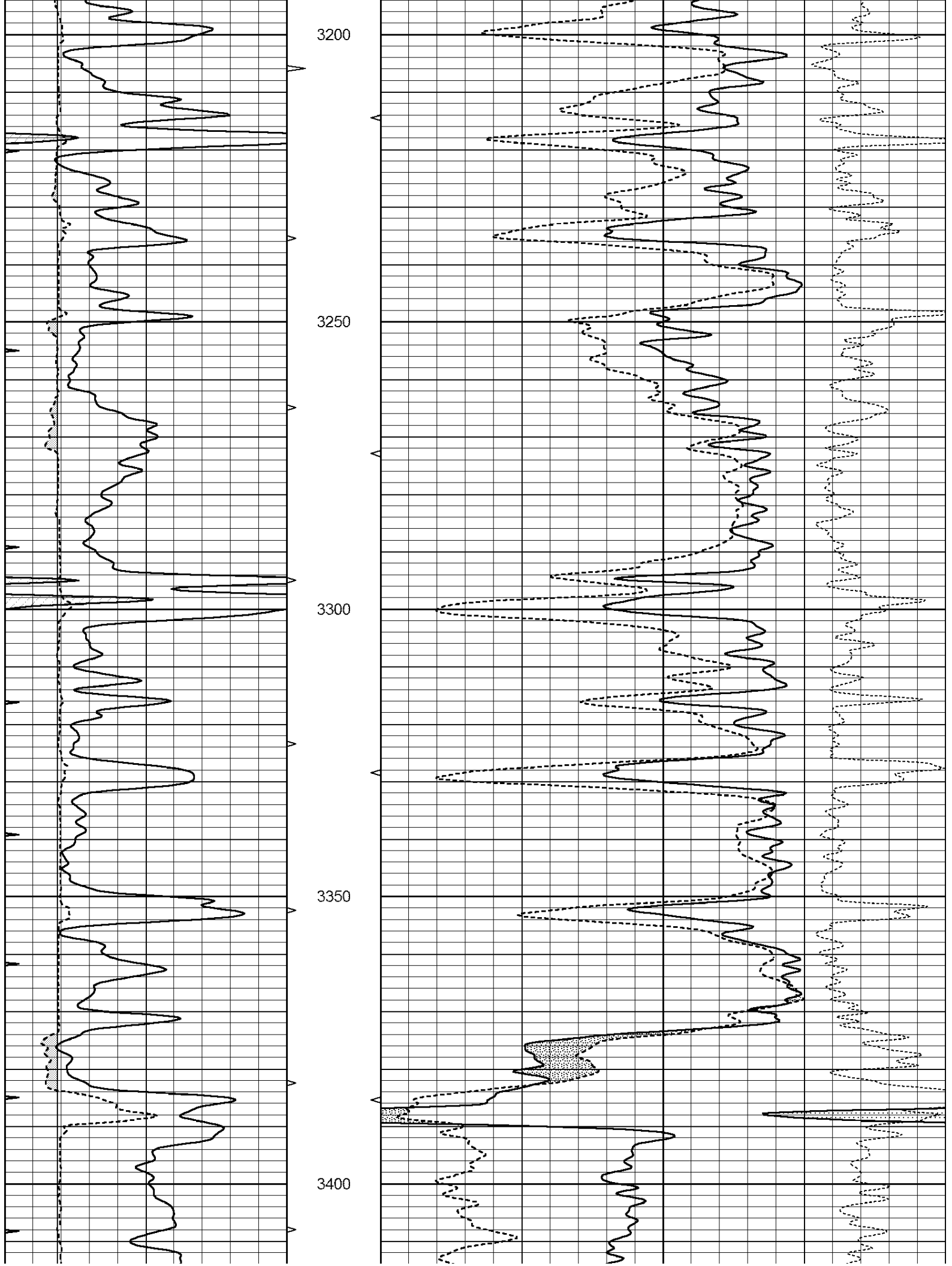
3000

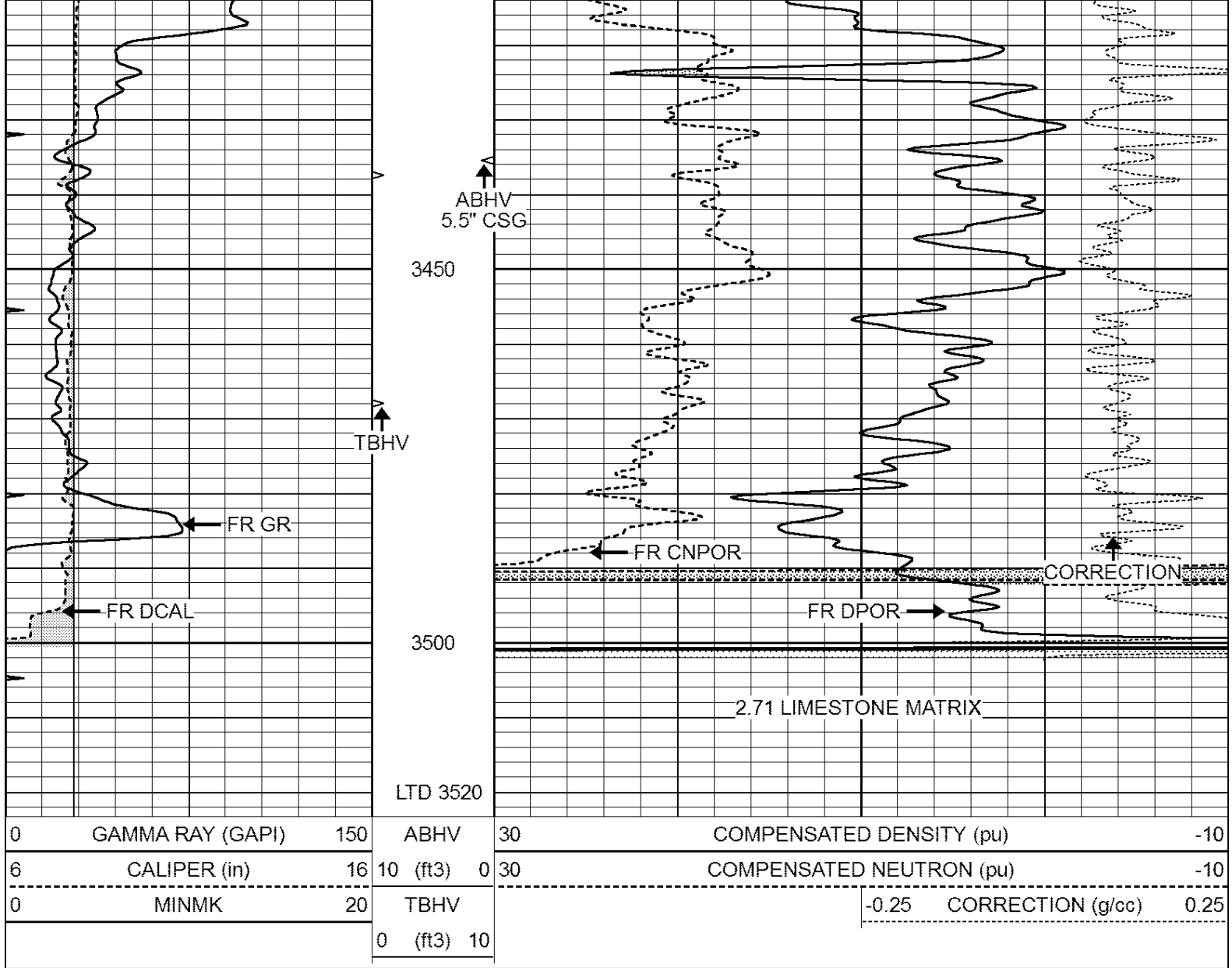
3050

3100

3150





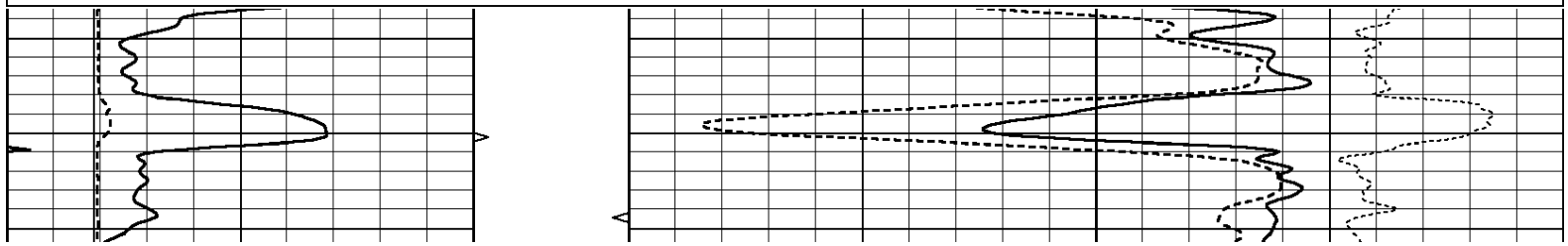


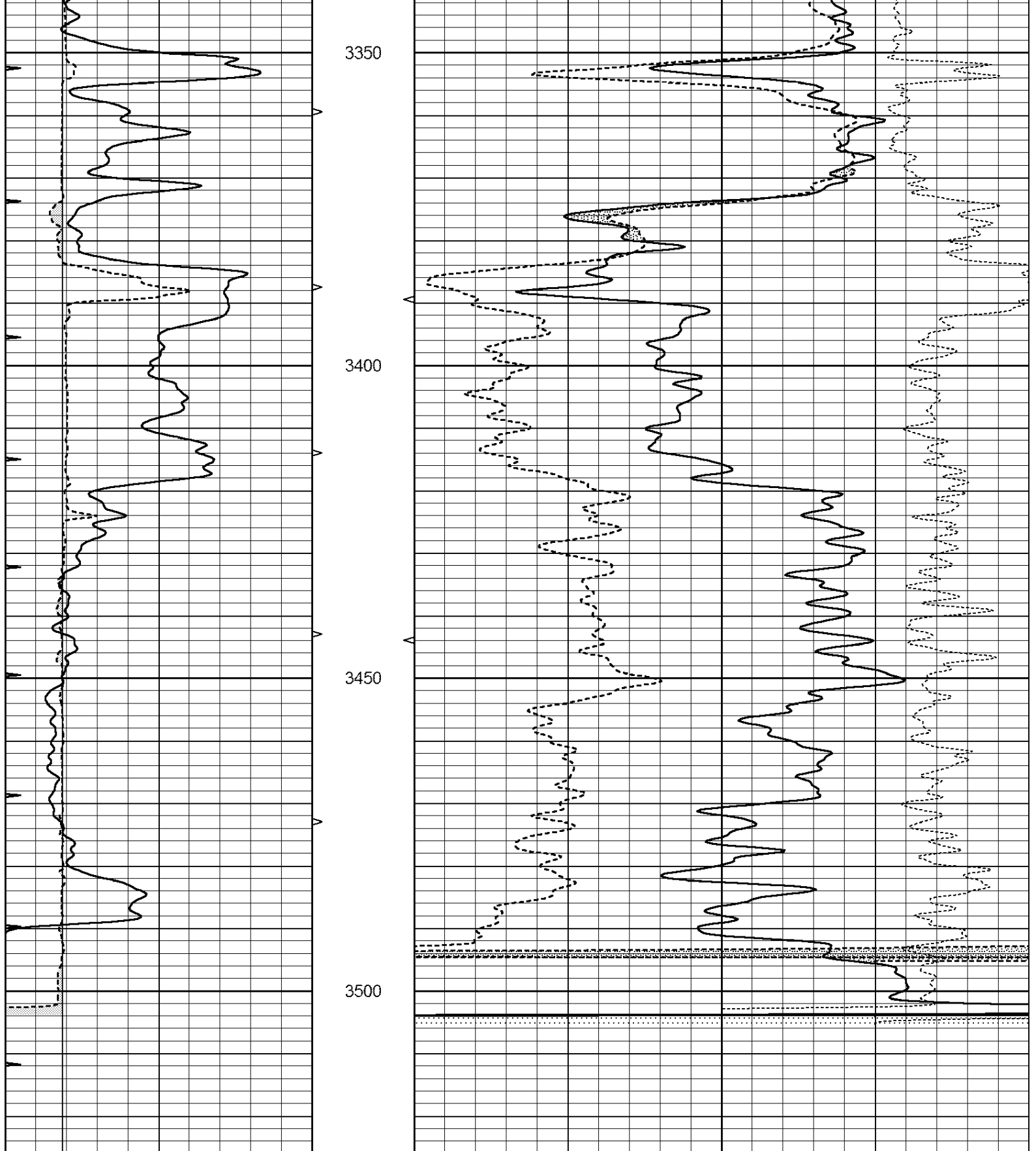
**Casedhole
Solutions**

REPEAT SECTION

Database File: 30893ddn.db
 Dataset Pathname: pass2.1
 Presentation Format: den_neu
 Dataset Creation: Sat Feb 27 02:11:49 2016 by Calc Open-Cased 090629
 Charted by: Depth in Feet scaled 1:240

0	GAMMA RAY (GAPI)	150	ABHV	30	COMPENSATED DENSITY (pu)	-10	
6	CALIPER (in)	16	10 (ft3)	0 30	COMPENSATED NEUTRON (pu)	-10	
0	MINMK	20	TBHV		-0.25	CORRECTION (g/cc)	0.25
			0 (ft3)	10			



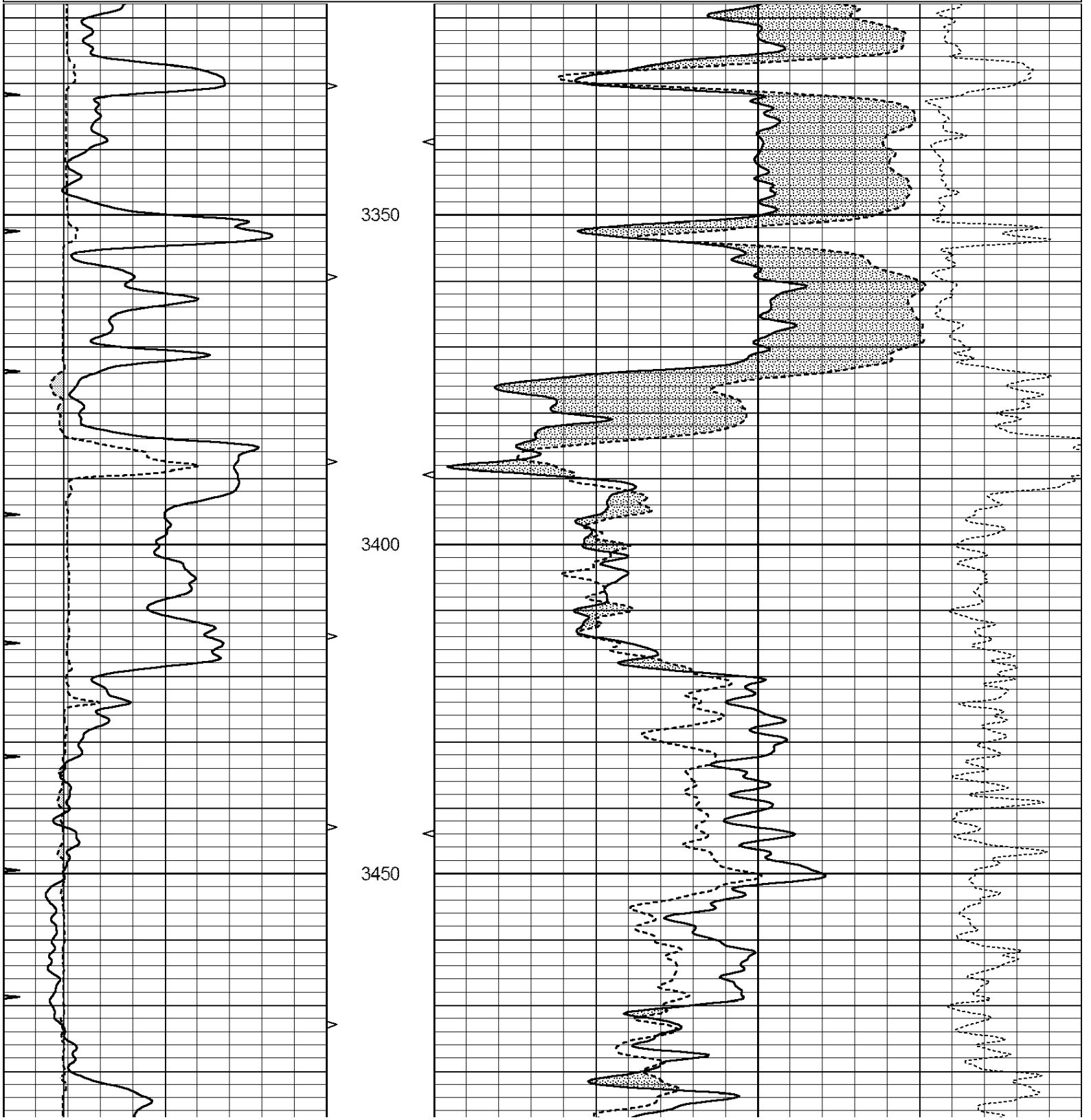


0	GAMMA RAY (GAPI)	150	ABHV	30	COMPENSATED DENSITY (pu)	-10
6	CALIPER (in)	16	10 (ft3)	0 30	COMPENSATED NEUTRON (pu)	-10
0	MINMK	20	TBHV		-0.25 CORRECTION (g/cc)	0.25
			0 (ft3)	10		



Database File: 30893ddn.db
 Dataset Pathname: pass2.2
 Presentation Format: den_neu
 Dataset Creation: Sat Feb 27 02:14:31 2016
 Charted by: Depth in Feet scaled 1:240

0	GAMMA RAY (GAPI)	150	ABHV	30	COMPENSATED DENSITY (pu)	-10
6	CALIPER (in)	16	10 (ft3)	0 30	COMPENSATED NEUTRON (pu)	-10
0	MINMK	20	TBHV		-0.25 CORRECTION (g/cc)	0.25
			0 (ft3)	10		



2)	Short Space Long Space	cps cps	pu	pu
3)	Short Space Long Space	cps cps	pu	pu

Gamma Ray Calibration Report

Serial Number:	GR6	
Tool Model:	OPEN	
Performed:	Thu Nov 12 05:47:01 2015	
Calibrator Value:	150.0	GAPI
Background Reading:	0.0	cps
Calibrator Reading:	276.0	cps
Sensitivity:	0.4500	GAPI/cps