



**Casedhole Solutions**

**MICRO LOG**

Company SHELBY RESOURCES, LLC.

Well MP #1-23

Field

County BARTON State KANSAS

Location: 980' FNL & 1754' FWL API #: 15-009-26139-00-00

Other Services  
CDL/CNL  
DIL/SON

SEC 23 TWP 18S RGE 14W

Permanent Datum GROUND LEVEL Elevation 1906  
Log Measured From KELLY BUSHING 11' A.G.L.  
Drilling Measured From KELLY BUSHING

Elevation  
K.B. 1917  
D.F. 1915  
G.L. 1906

Date 2/27/16

Run Number TWO

Depth Driller 3520

Depth Logger 3520

Bottom Logged Interval 3498

Top Log Interval 2800

Casing Driller 8 5/8" @ 857

Casing Logger 857

Bit Size 7 7/8"

Type Fluid in Hole CHEMICAL MUD

Density / Viscosity 9.3/59

pH / Fluid Loss 10.0/7.2

Source of Sample FLOWLINE

Rm @ Meas. Temp .80 @ 55F

Rmt @ Meas. Temp .60 @ 55F

Rmc @ Meas. Temp .96 @ 55F

Source of Rmf / Rmc MEASUREMENT

Rm @ BHT .39 @ 112F

Time Circulation Stopped 2 HOURS

Time Logger on Bottom 112F

Maximum Recorded Temperature 4010

Equipment Number HAYS, KANSAS

Location JASON CAPPELLUCCI

Recorded By JEREMY SCHWARTZ

Witnessed By

<<< Fold Here >>>

All interpretations are opinions based on inferences from electrical or other measurements and we cannot and do not guarantee the accuracy or correctness of any interpretation, and we shall not, except in the case of gross or willful negligence on our part, be liable or responsible for any loss, costs, damages, or expenses incurred or sustained by anyone resulting from any interpretation made by any of our officers, agents or employees. These interpretations are also subject to our general terms and conditions set out in our current Price Schedule.

Comments

THANK YOU FOR USING CASED HOLE SOLUTIONS, HAYS, KS. (785) 628-6395  
DIRECTIONS:  
RUSSELL, KS. - SOUTH TO HWY 4 INTERSECTION - SOUTH TO THE CURVE EAST  
1/4 EAST - SOUTH INTO

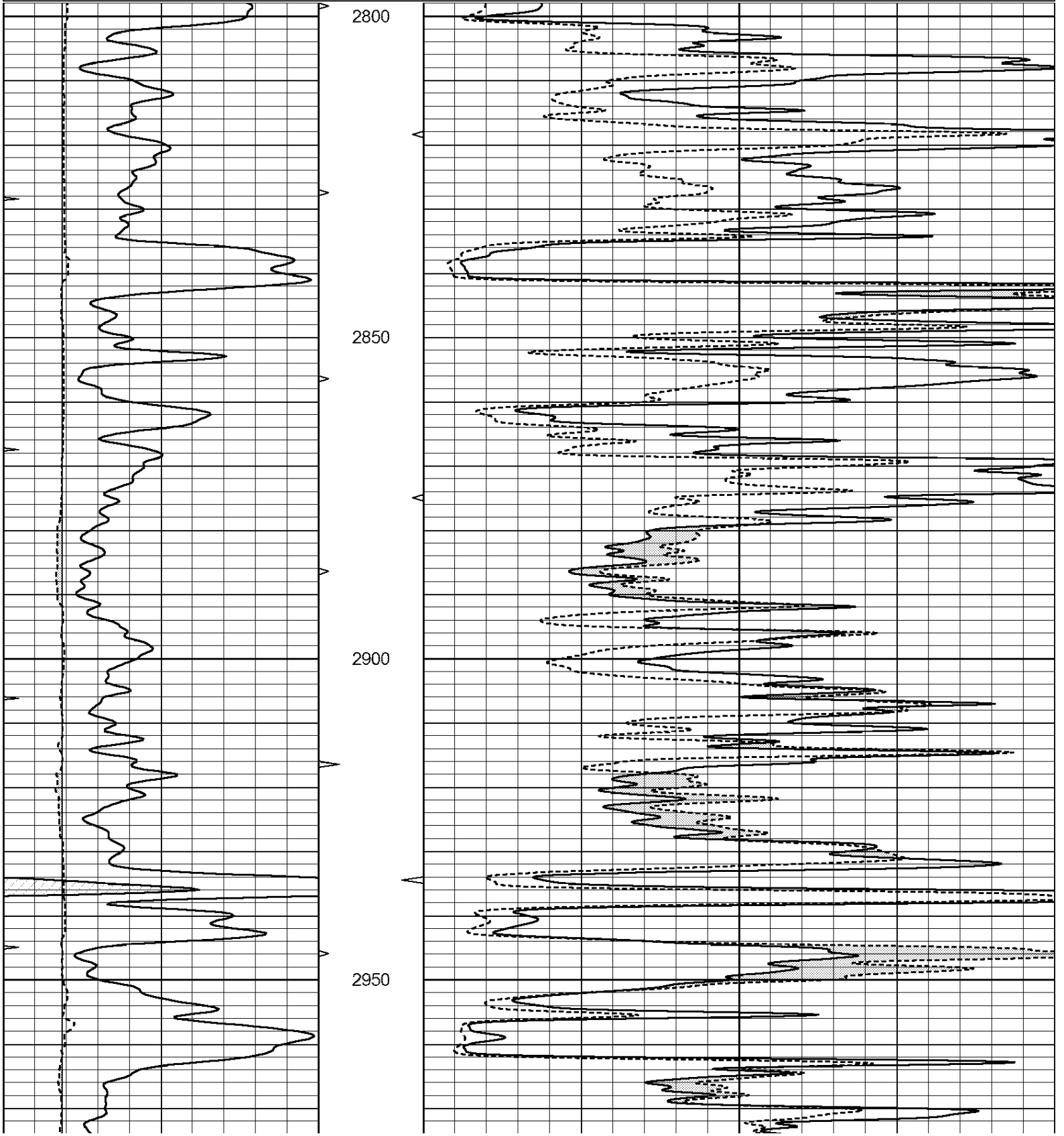


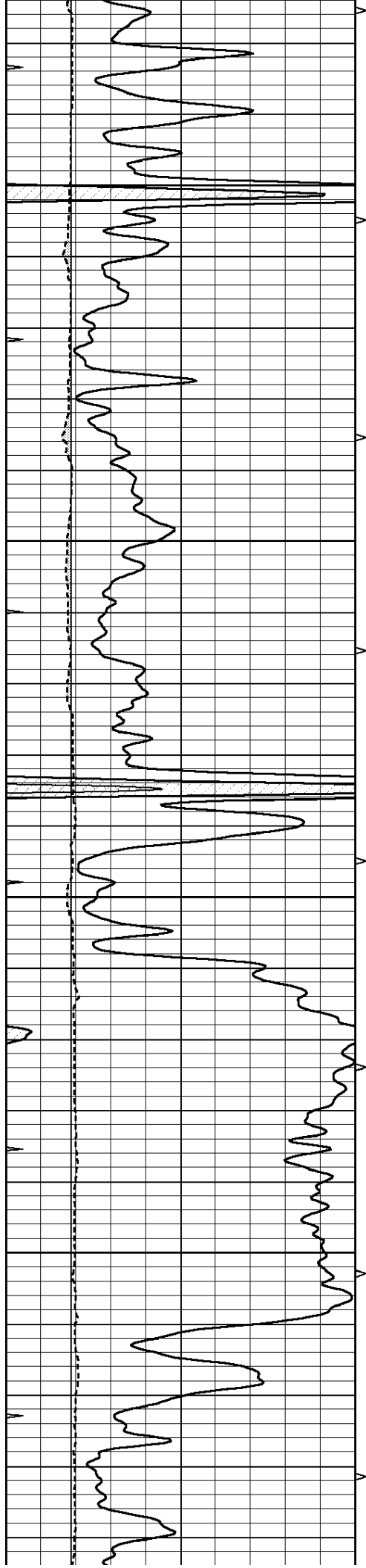
**Casedhole Solutions**

**MAIN SECTION**

Database File: 30893ddn.db  
 Dataset Pathname: pass6.1  
 Presentation Format: \_micro  
 Dataset Creation: Sat Feb 27 04:41:12 2016 by Calc Open-Cased 090629  
 Charted by: Depth in Feet scaled 1:240

0	GAMMA RAY (GAPI)	150	ABHV	0	MEL1.5 (Ohm-m)	40
6	CALIPER (in)	16	10 (ft3)	0	MEL2.0 (Ohm-m)	40
0	MINMK	20	TBHV			
			0 (ft3)	10		



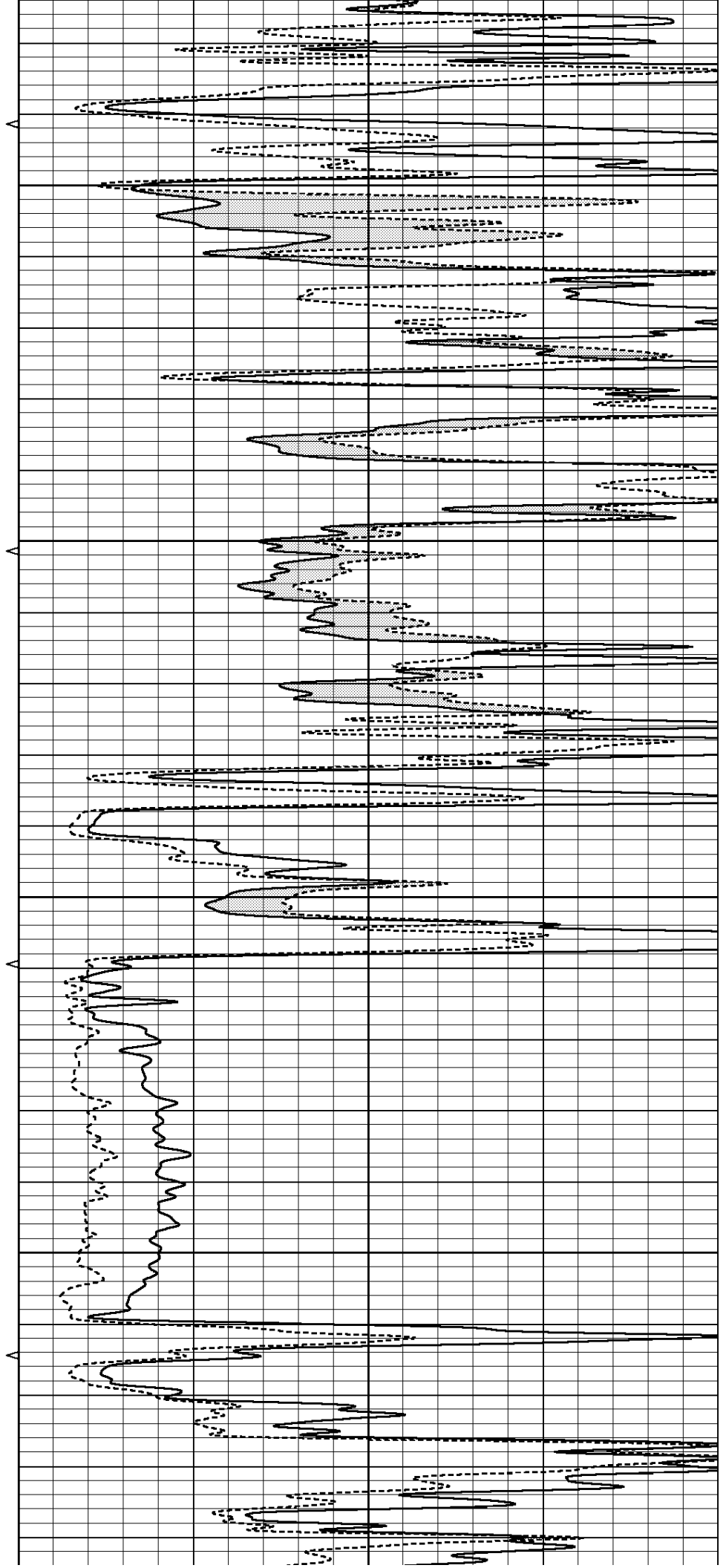


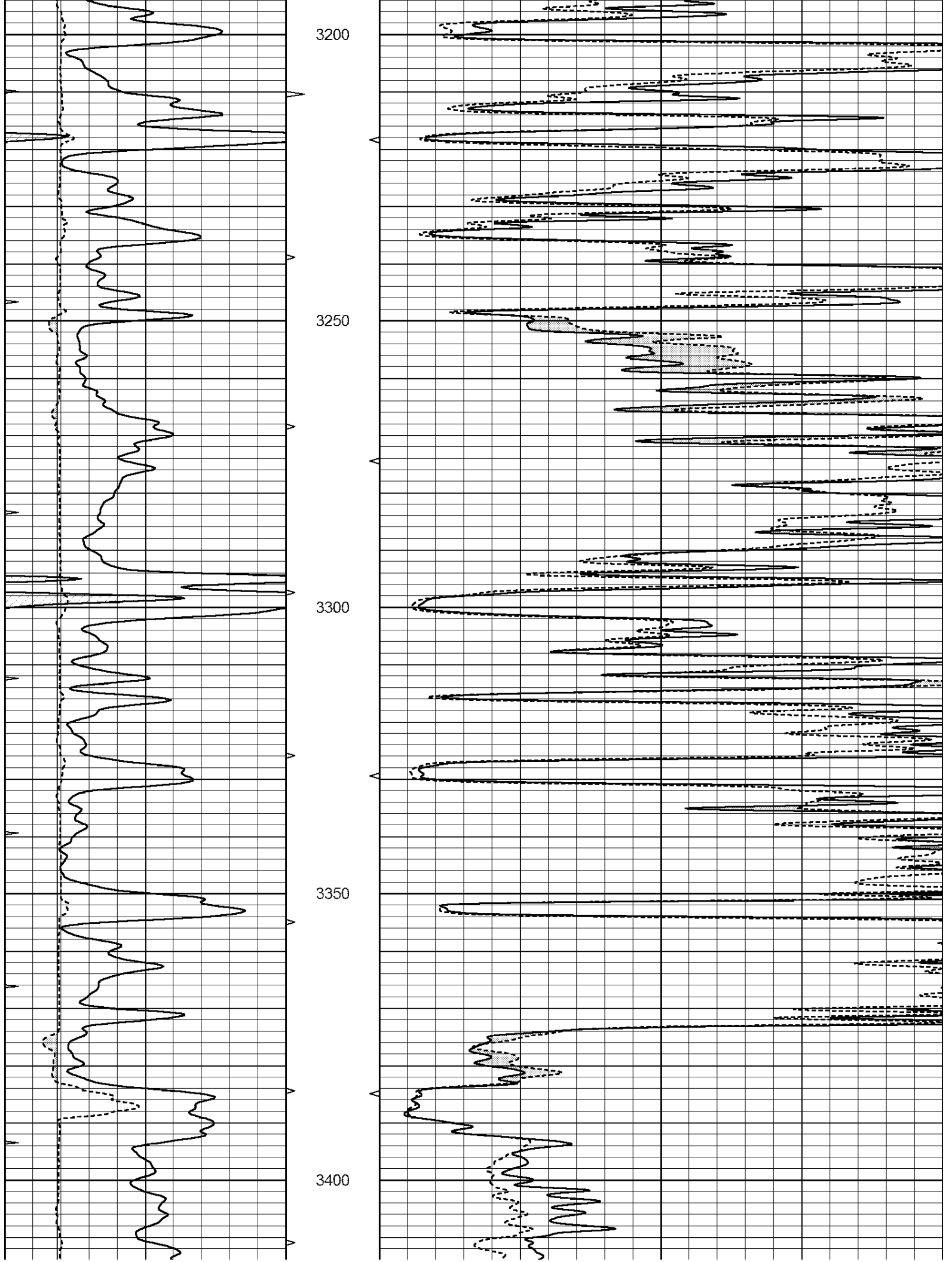
3000

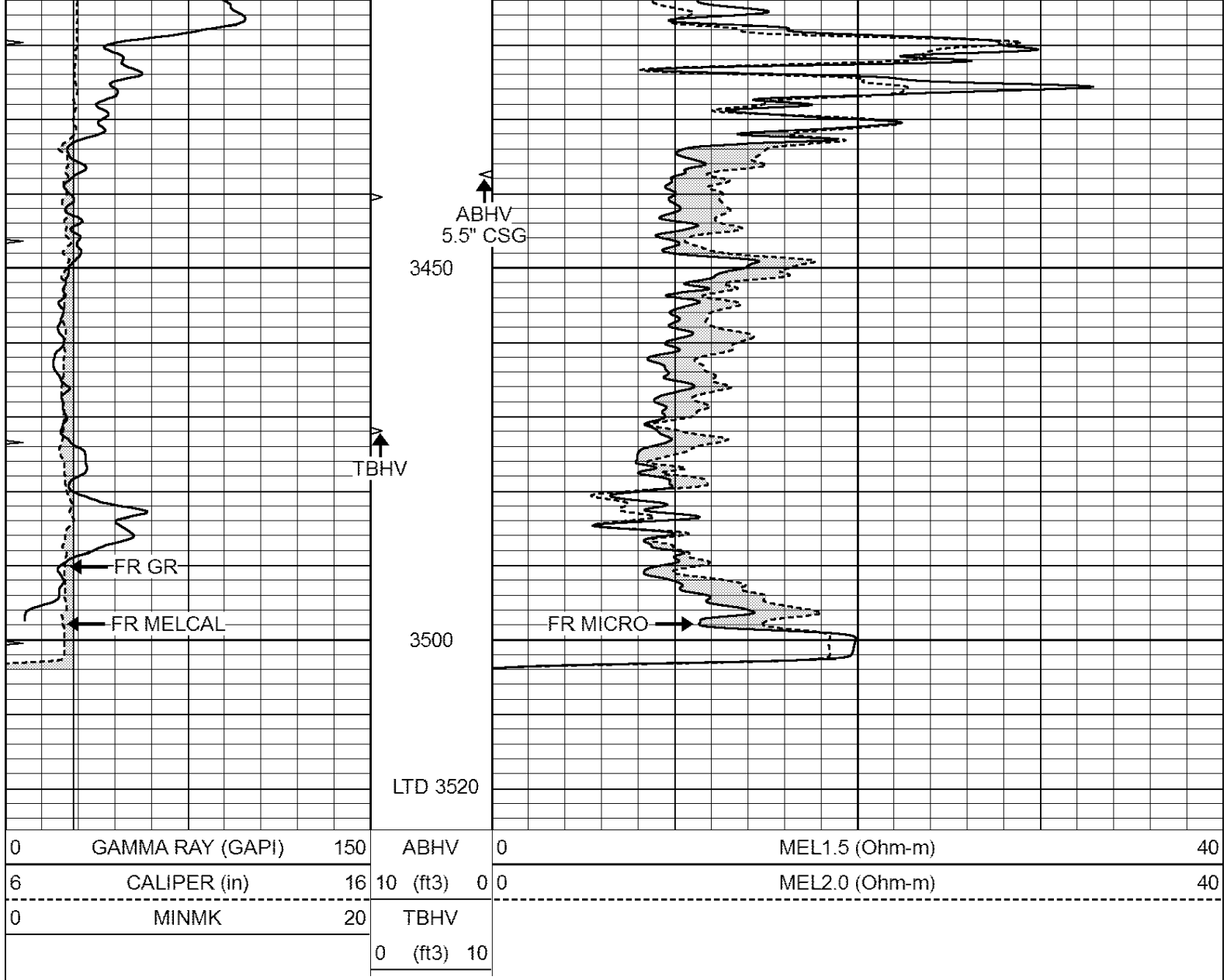
3050

3100

3150





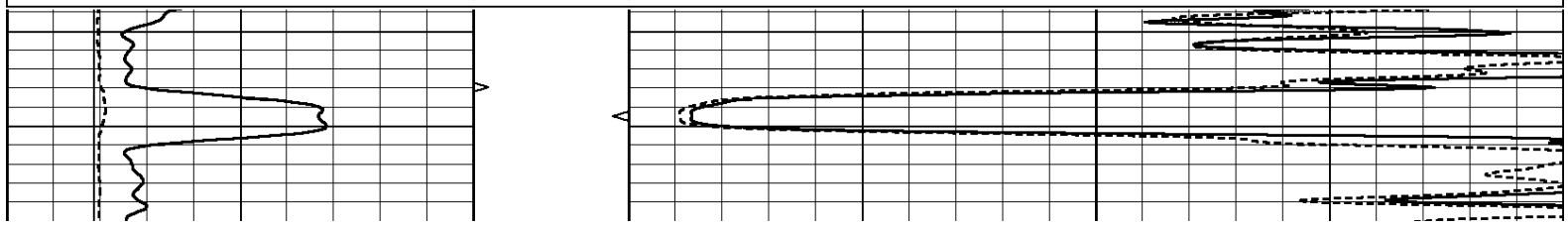


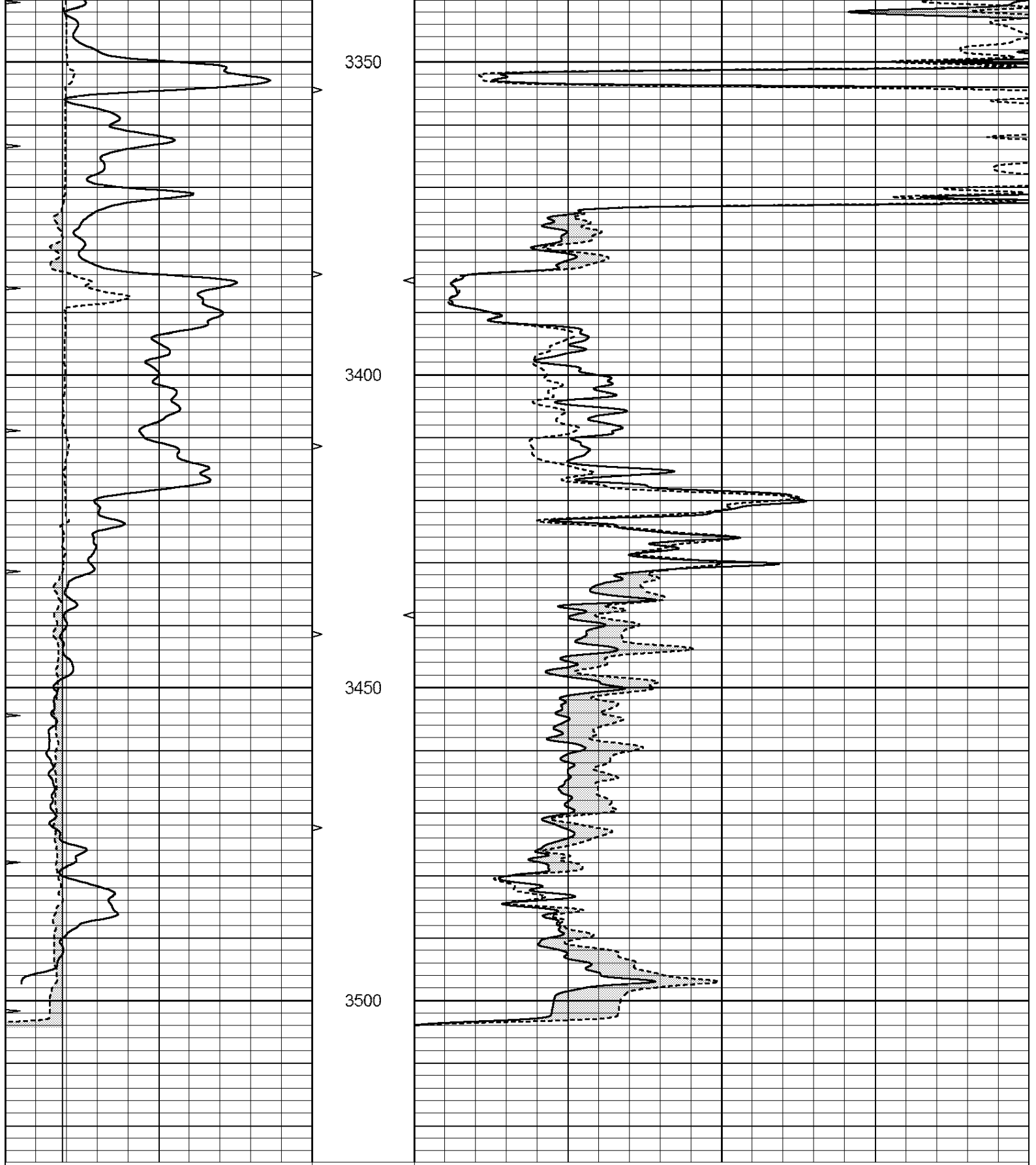
**Casedhole Solutions**

# REPEAT SECTION

Database File: 30893ddn.db  
 Dataset Pathname: pass5.1  
 Presentation Format: \_micro  
 Dataset Creation: Sat Feb 27 04:27:58 2016 by Calc Open-Cased 090629  
 Charted by: Depth in Feet scaled 1:240

0	GAMMA RAY (GAPI)	150	ABHV	0	MEL1.5 (Ohm-m)	40
6	CALIPER (in)	16	10 (ft3)	0 0	MEL2.0 (Ohm-m)	40
0	MINMK	20	TBHV			
			0 (ft3)	10		





0	GAMMA RAY (GAPI)	150	ABHV	0	MEL1.5 (Ohm-m)	40
6	CALIPER (in)	16	10 (ft3)	0	MEL2.0 (Ohm-m)	40
0	MINMK	20	TBHV			
			0 (ft3)	10		

MICRO Calibration Report

Serial Number: MICRO6  
Tool Model: PROBE  
Performed: Wed Aug 26 00:34:46 2015

Caliper Calibration: Gain=3.960 Offset=4.601  
References Low Cal High Cal  
7.000 14.000  
Readings 0.555 2.323

1.5" Calibration: Gain=38.075 Offset=-0.400  
References Low Cal High Cal  
0.000 20.000  
Readings 0.004 1.196

2" Calibration: Gain=48.000 Offset=-1.000  
References Low Cal High Cal  
0.000 20.000  
Readings 0.006 0.913

Gamma Ray Calibration Report

Serial Number: GR6  
Tool Model: OPEN  
Performed: Thu Nov 12 05:47:01 2015

Calibrator Value: 150.0 GAPI  
Background Reading: 0.0 cps  
Calibrator Reading: 276.0 cps  
Sensitivity: 0.4500 GAPI/cps