



**DUAL INDUCTION
LL3/GR LOG**

Company **COLT ENERGY INC.**
 Well **SCHAFFER # CS-12**
 Field **BIG SANDY**
 County **WOODSON** State **KANSAS**

Company **COLT ENERGY INC.**
 Well **SCHAFFER # CS-12**
 Field **BIG SANDY**
 County **WOODSON** State **KANSAS**

Location: API #: 15-207-29318-0000
 SW SW SE NE
 2805' FSL & 1155' FEL

SEC 22 TWP 26S RGE 14E
 Permanent Datum **GL** Elevation **941'**
 Log Measured From **GL**
 Drilling Measured From **GL**

Other Services
CDL/SWN
 Elevation
 K.B. ---
 D.F. ---
 G.L. 941'

Date	02-04-2016
Run Number	ONE
Depth Driller	1416'
Depth Logger	1416'
Bottom Logged Interval	1414'
Top Log Interval	SURFACE
Casing Driller	8.625" @ 41.50'
Casing Logger	8.625" @ 41.50'
Bit Size	6.75"
Type Fluid in Hole	WATER
Density / Viscosity	
pH / Fluid Loss	
Source of Sample	
Rm @ Meas. Temp	
Rmf @ Meas. Temp	
Rmc @ Meas. Temp	
Source of Rmf / Rmc	
Rm @ BHT	
Time Circulation Stopped	
Time Logger on Bottom	
Maximum Recorded Temperature	
Equipment Number	OW2
Location	HOMINY, OK
Recorded By	LOWERY
Witnessed By	MR. ASHLOCK

<<< Fold Here >>>

All interpretations are opinions based on inferences from electrical or other measurements and we cannot and do not guarantee the accuracy or correctness of any interpretation, and we shall not, except in the case of gross or willful negligence on our part, be liable or responsible for any loss, costs, damages, or expenses incurred or sustained by anyone resulting from any interpretation made by any of our officers, agents or employees. These interpretations are also subject to our general terms and conditions set out in our current Price Schedule.

Comments

OW2-8903
CREW : M. KIDD

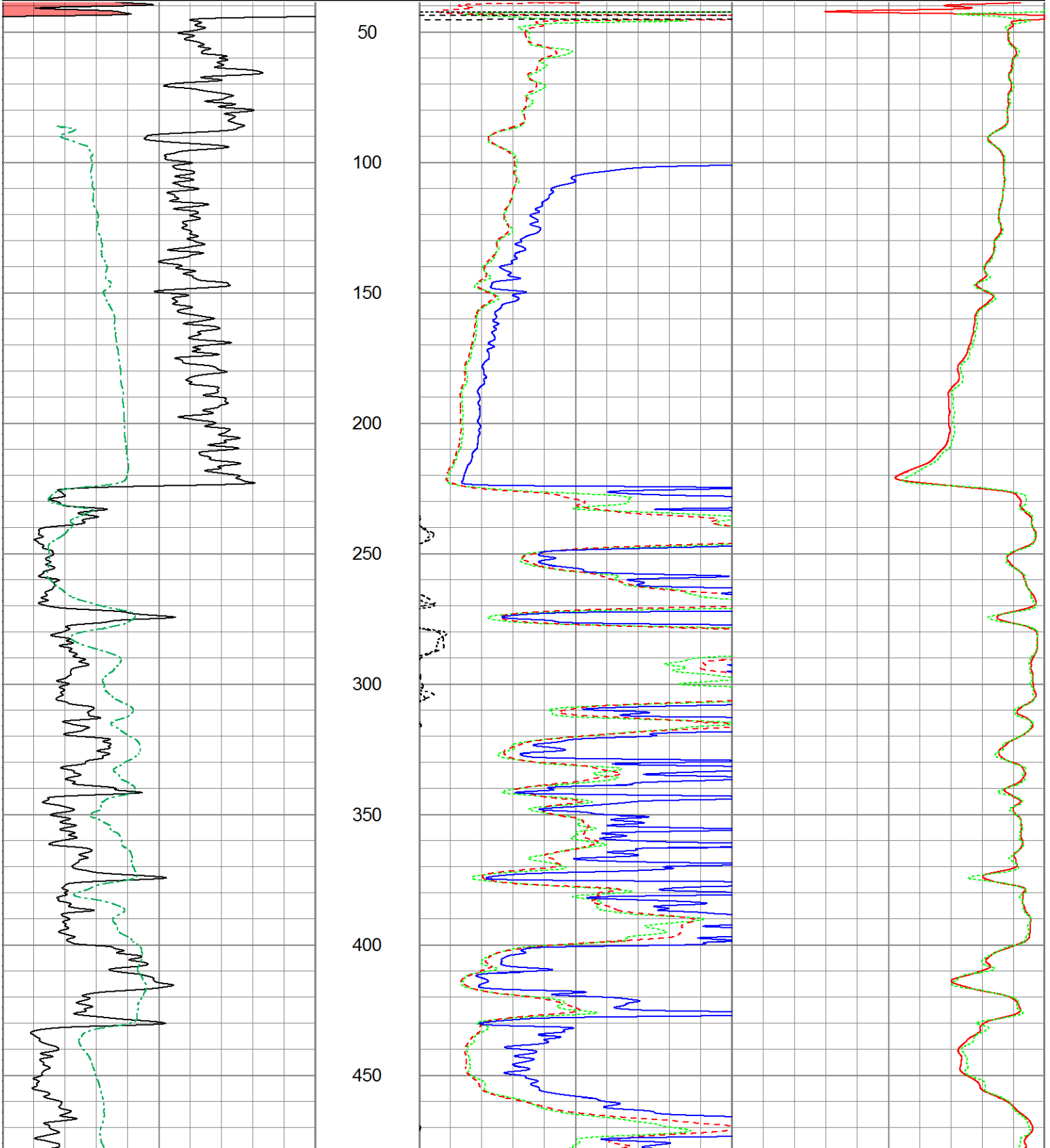


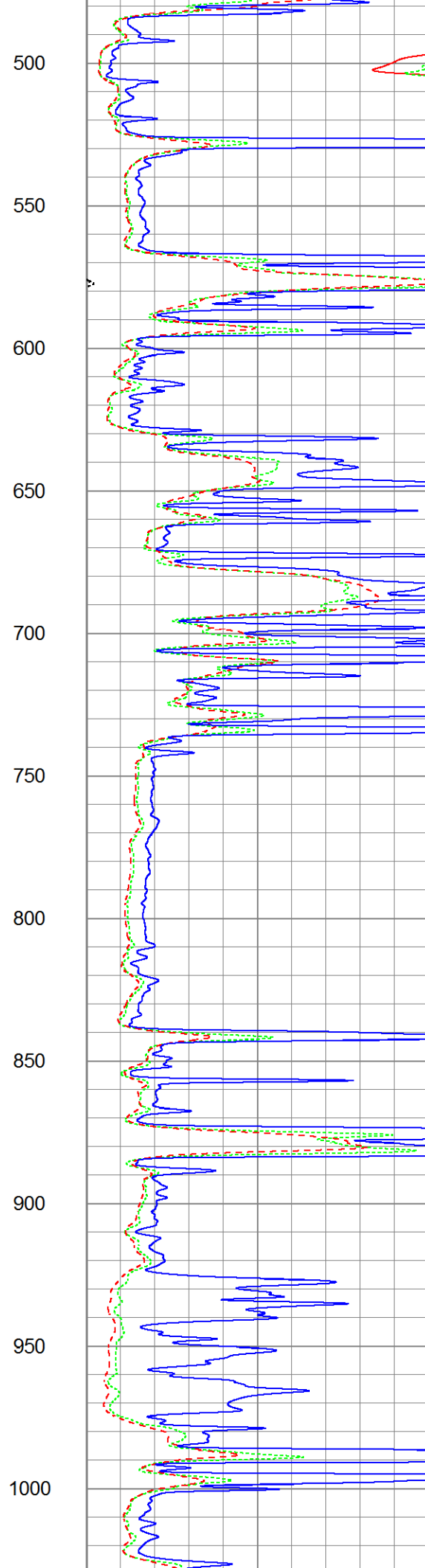
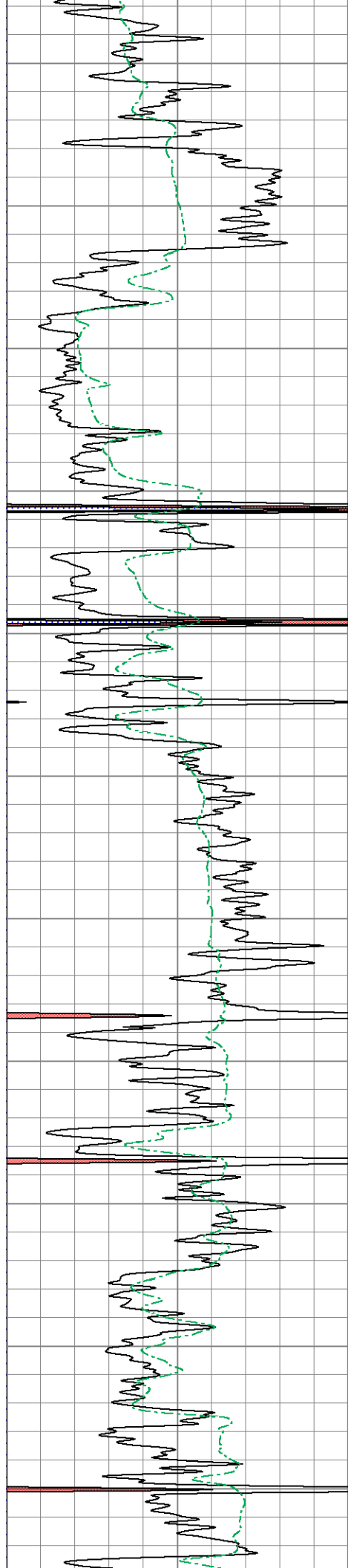
2" DIL SECTION

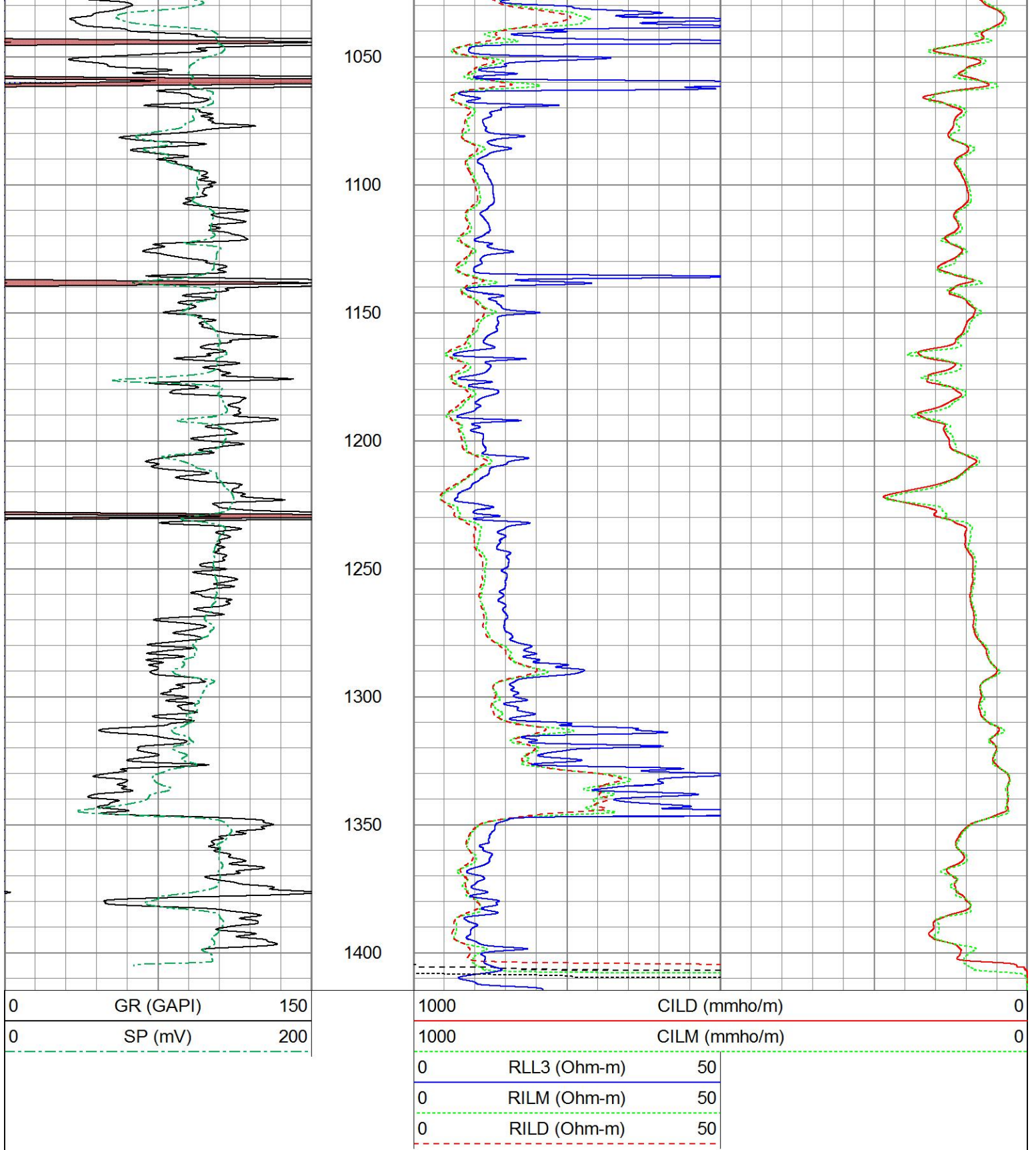
Database File ow2-8903 colt energy.db
 Dataset Pathname DIL/pass1.3
 Presentation Format dil2mdcol
 Dataset Creation Thu Feb 04 13:05:45 2016
 Charted by Depth in Feet scaled 1:600

0	GR (GAPI)	150
0	SP (mV)	200

1000	CILD (mmho/m)	0
1000	CILM (mmho/m)	0
0	RLL3 (Ohm-m)	50
0	RILM (Ohm-m)	50
0	RILD (Ohm-m)	50





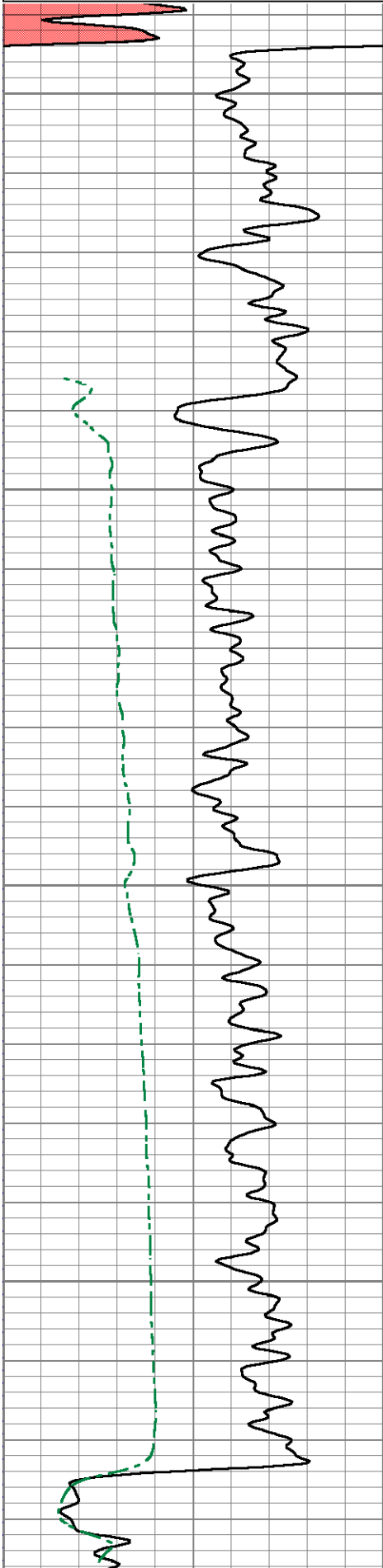


5" DIL SECTION

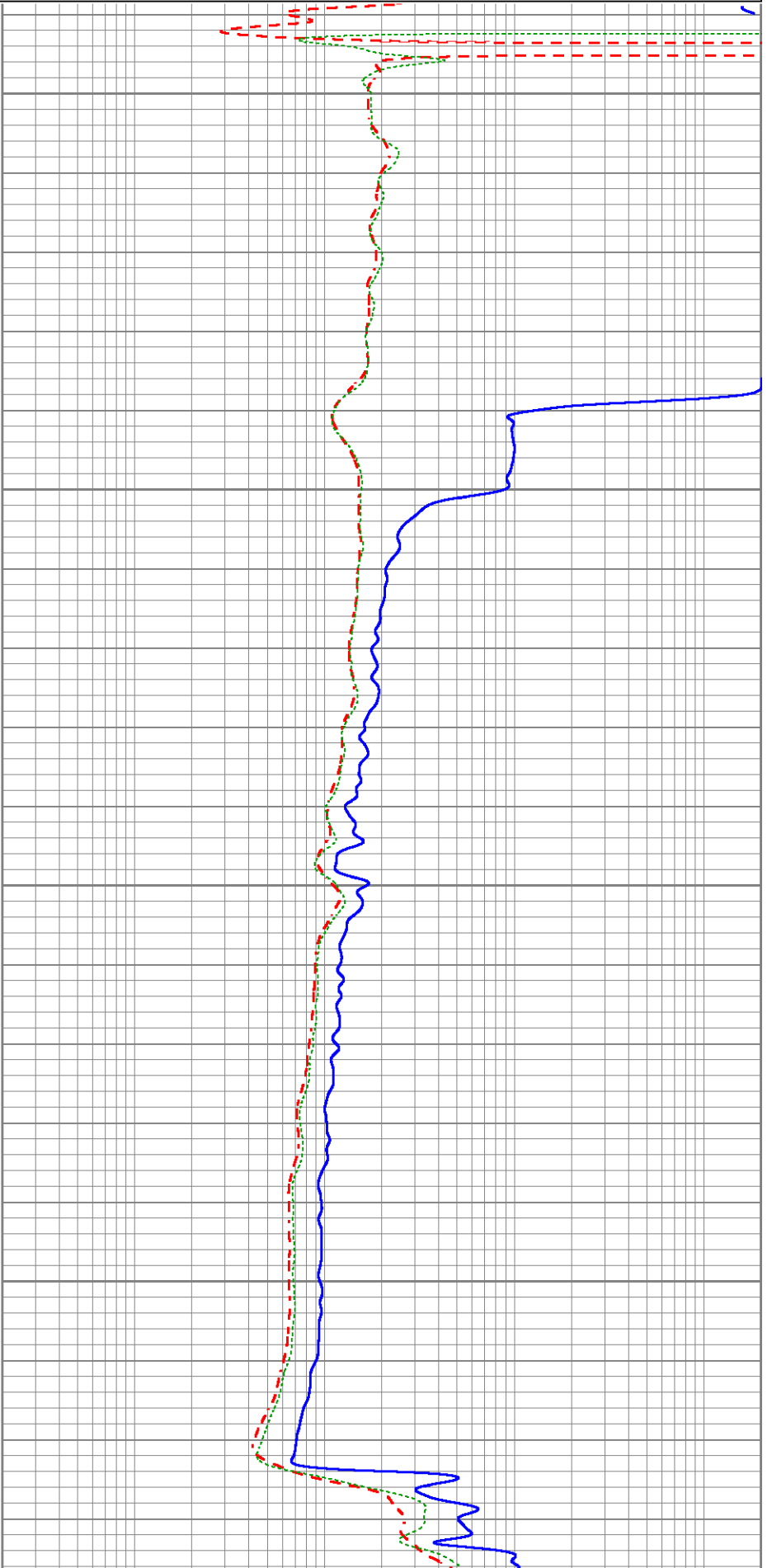
Database File ow2-8903 colt energy.db
 Dataset Pathname DIL/pass1.2
 Presentation Format dil5mdcol
 Dataset Creation Thu Feb 04 13:03:29 2016

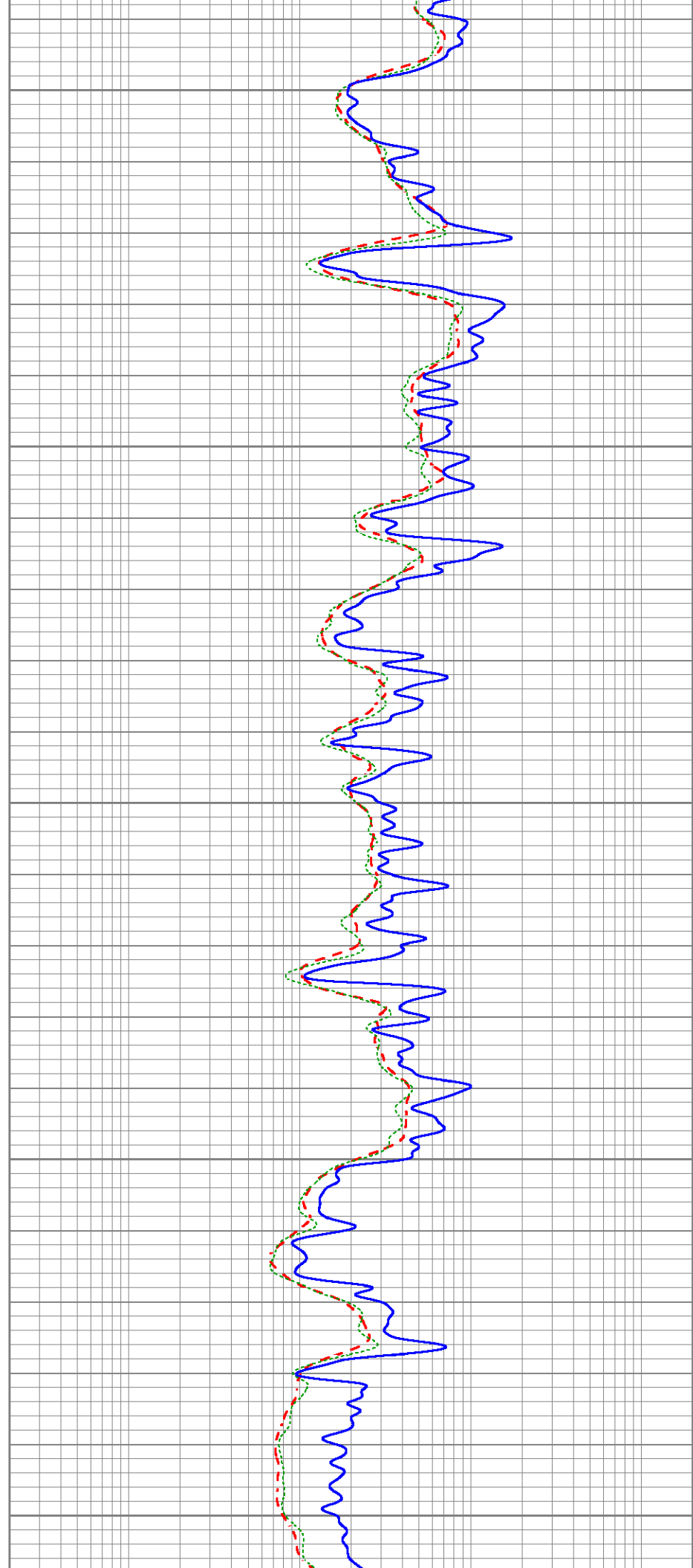
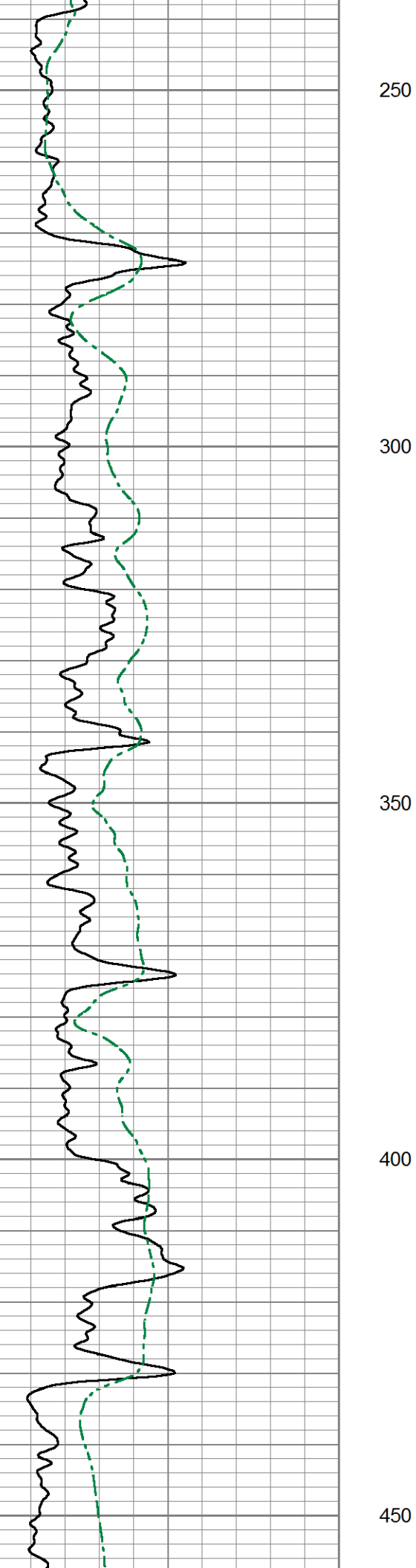
0	Gamma Ray (GAPI)	150
0	SP (mV)	200

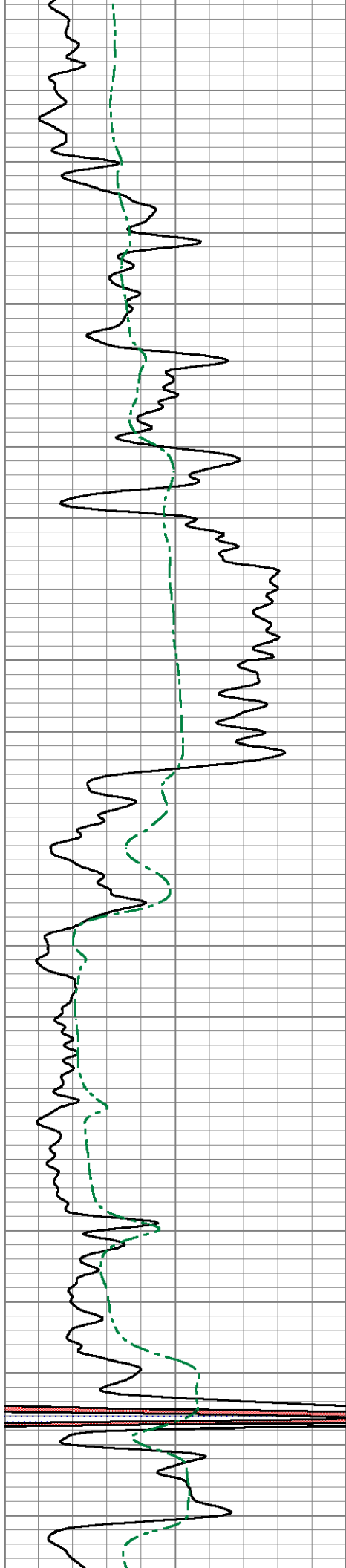
0.2	Deep Resistivity (Ohm-m)	2000
0.2	Medium Resistivity (Ohm-m)	2000
0.2	Shallow Resistivity (Ohm-m)	2000



50
100
150
200





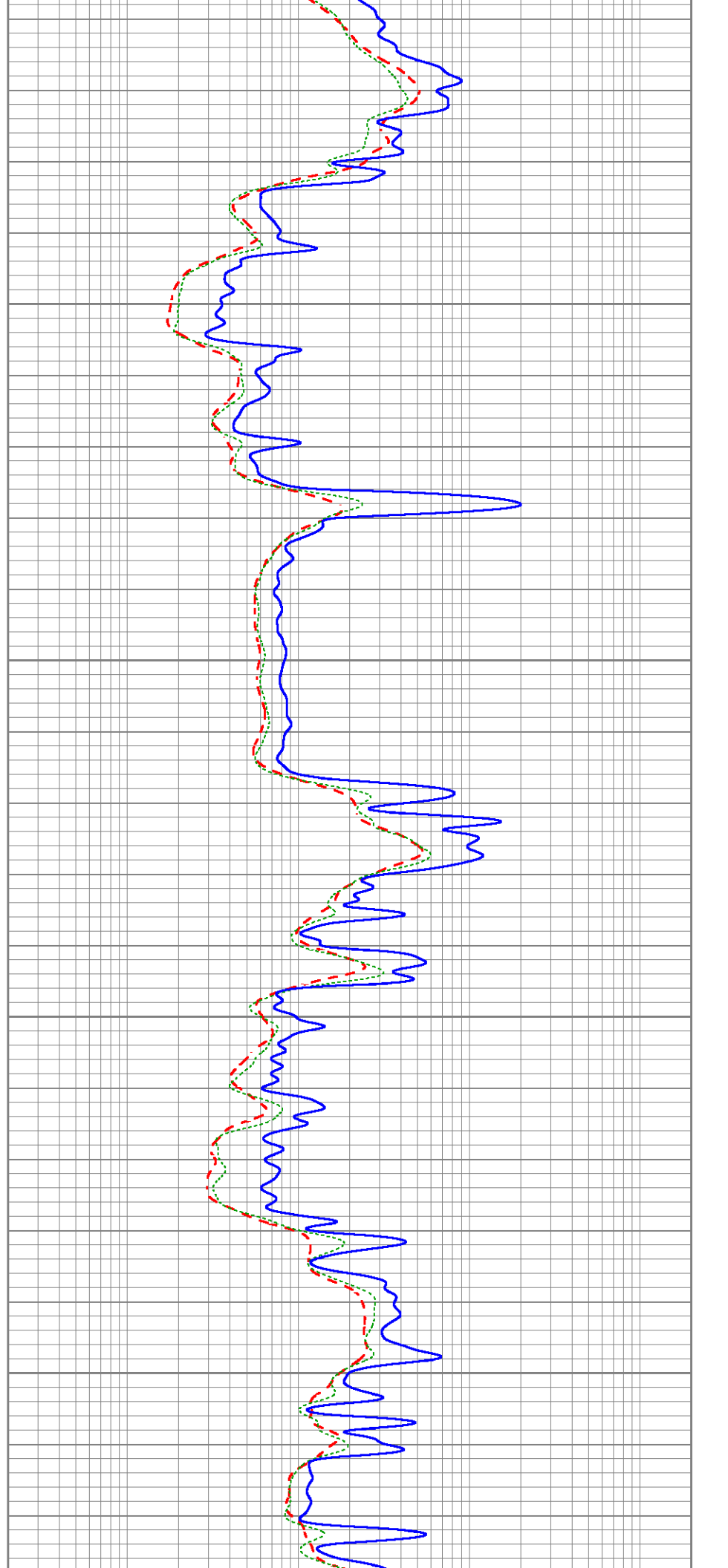


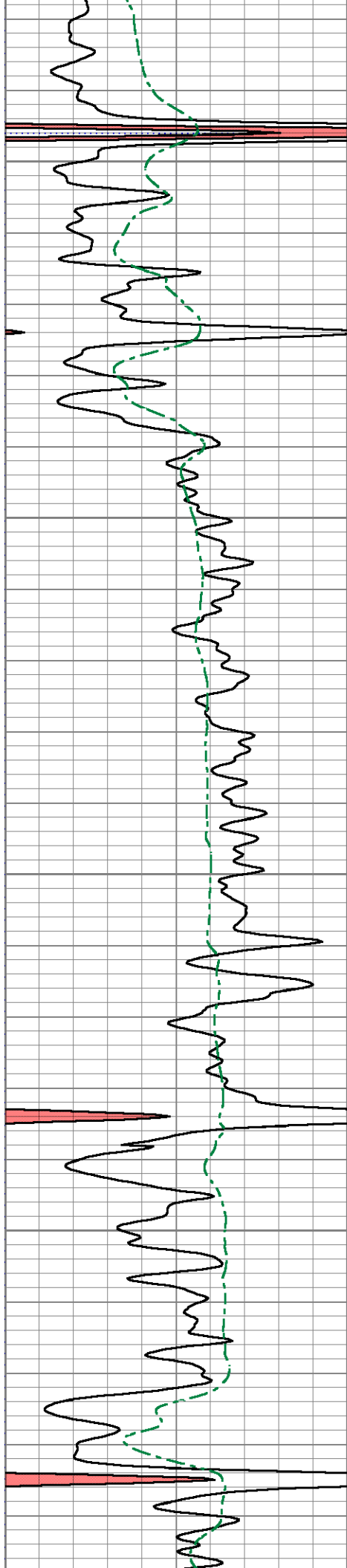
500

550

600

650



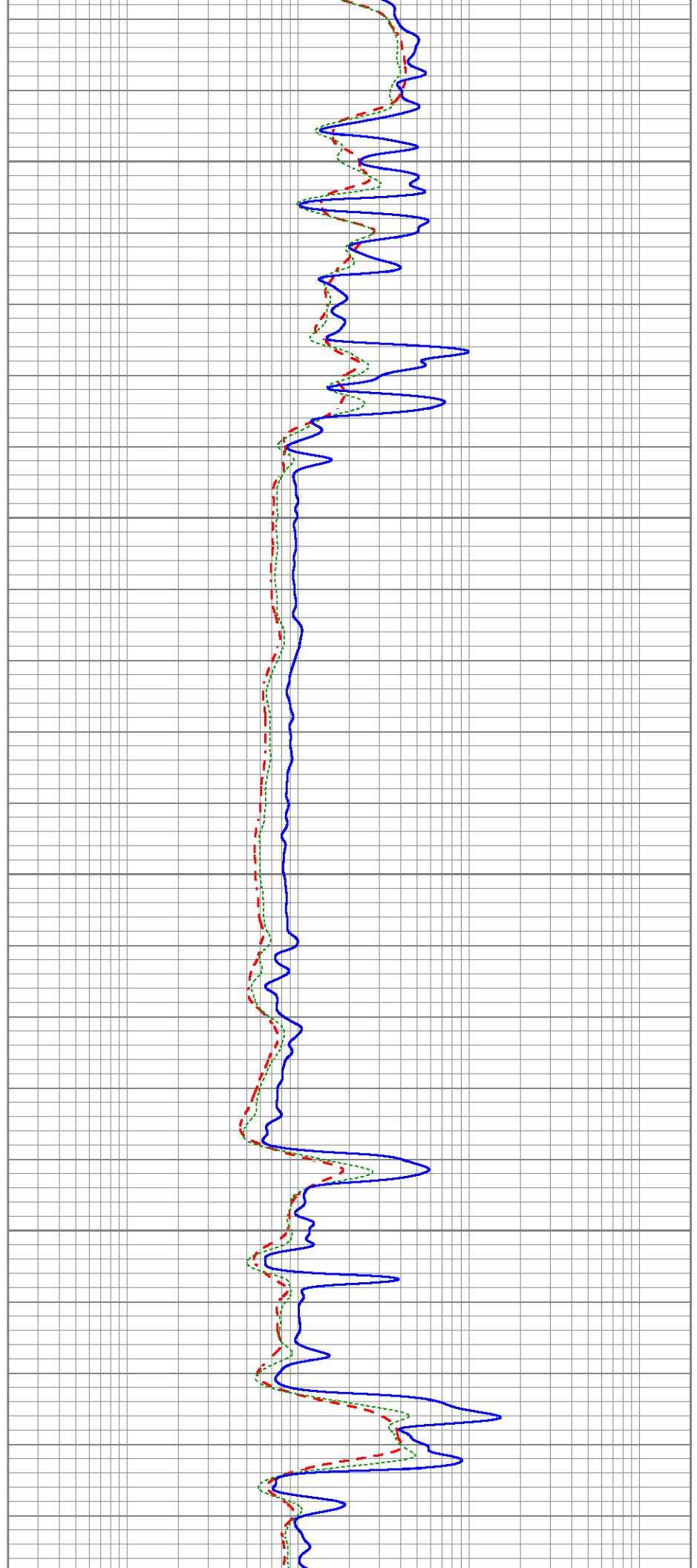


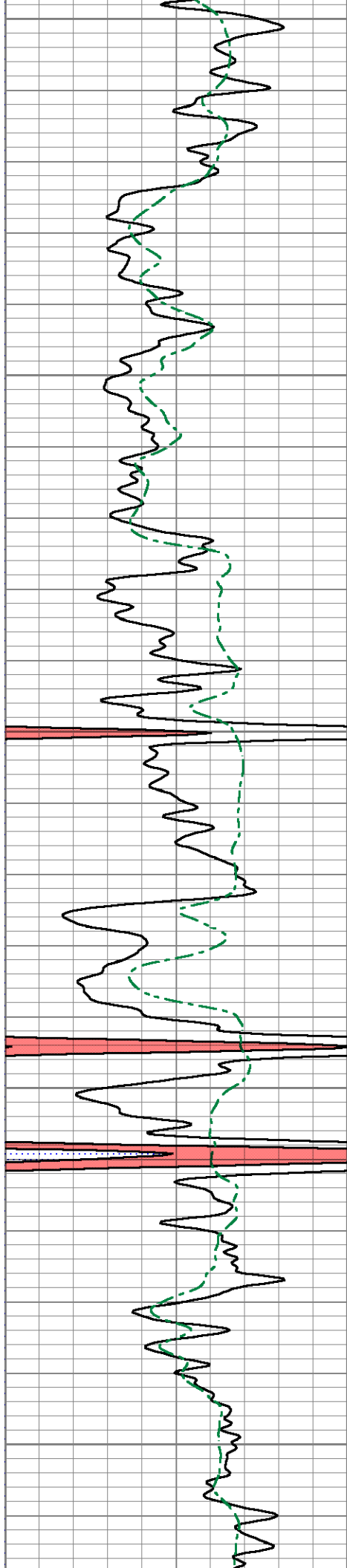
700

750

800

850





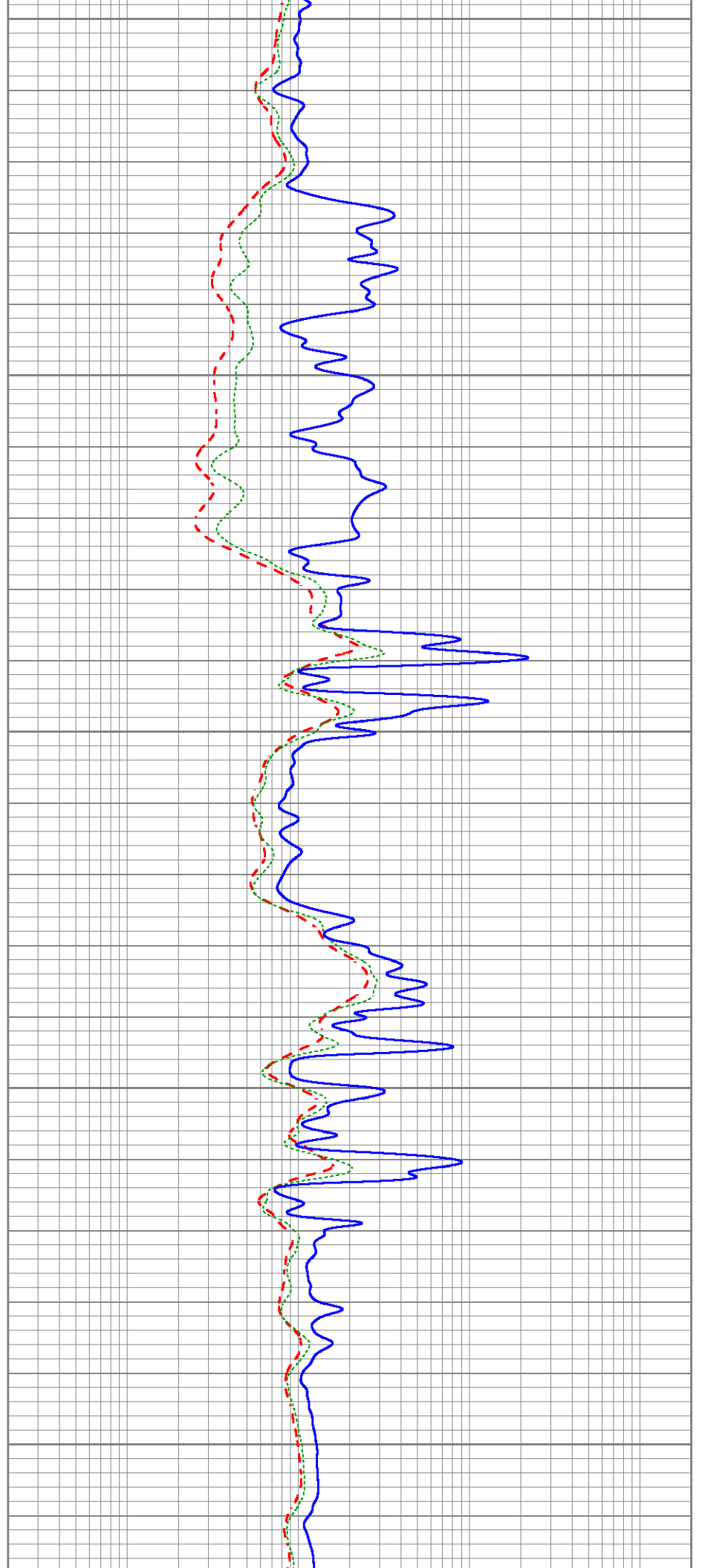
900

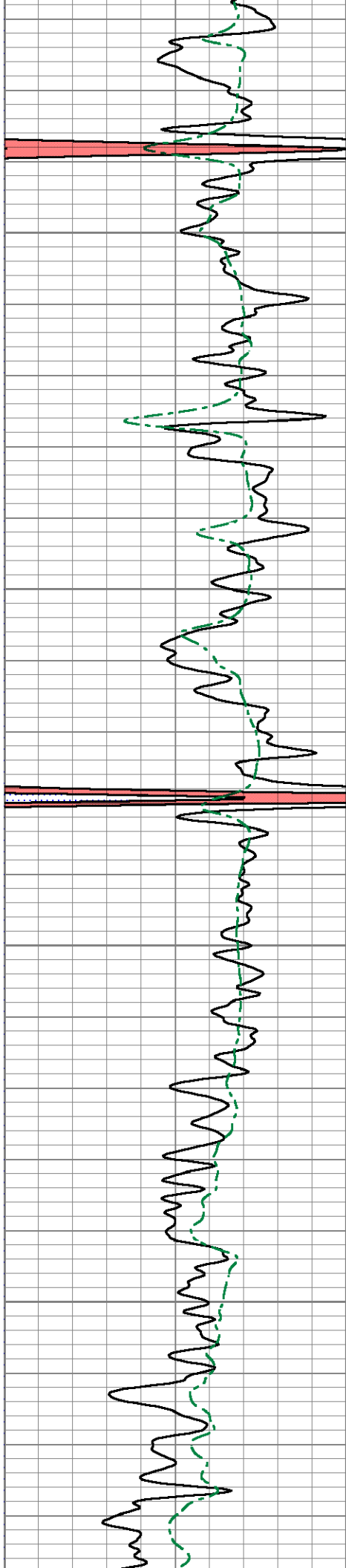
950

1000

1050

1100



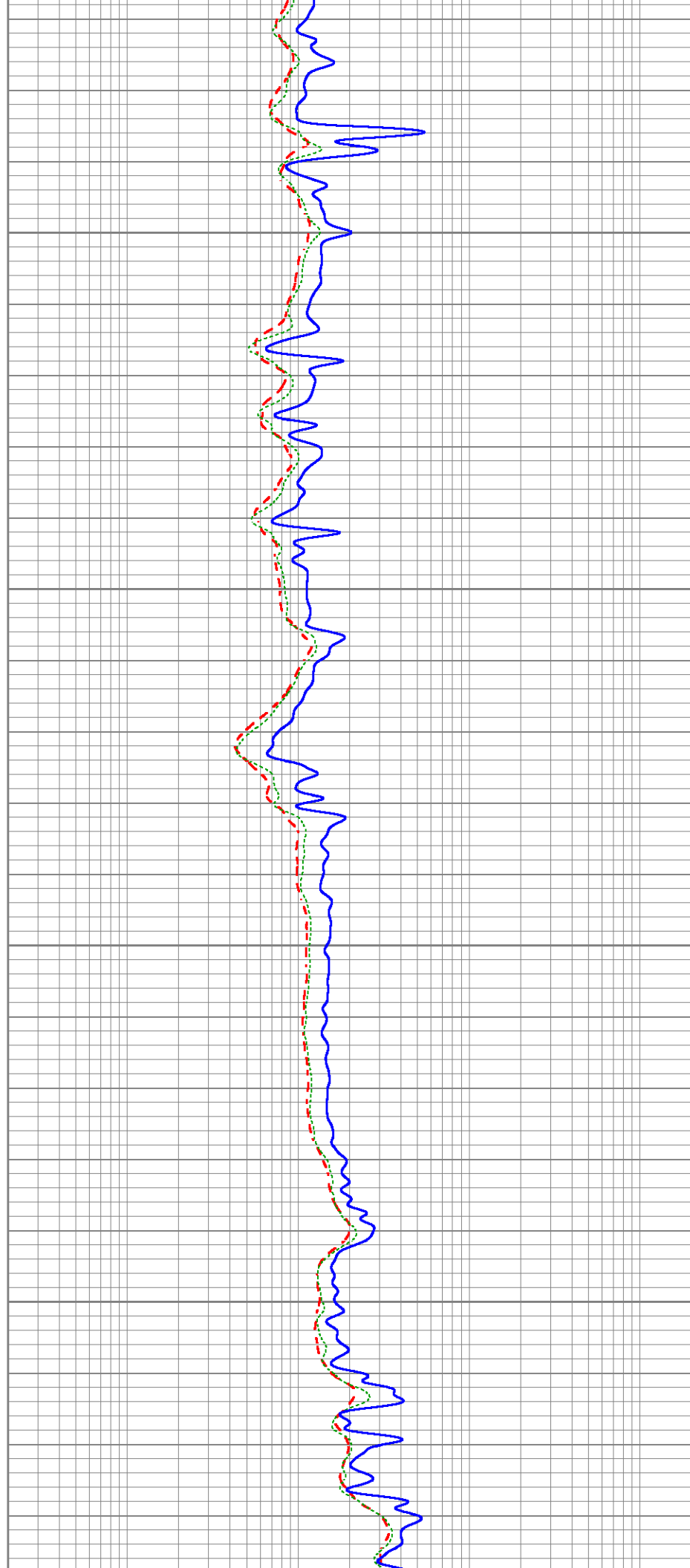


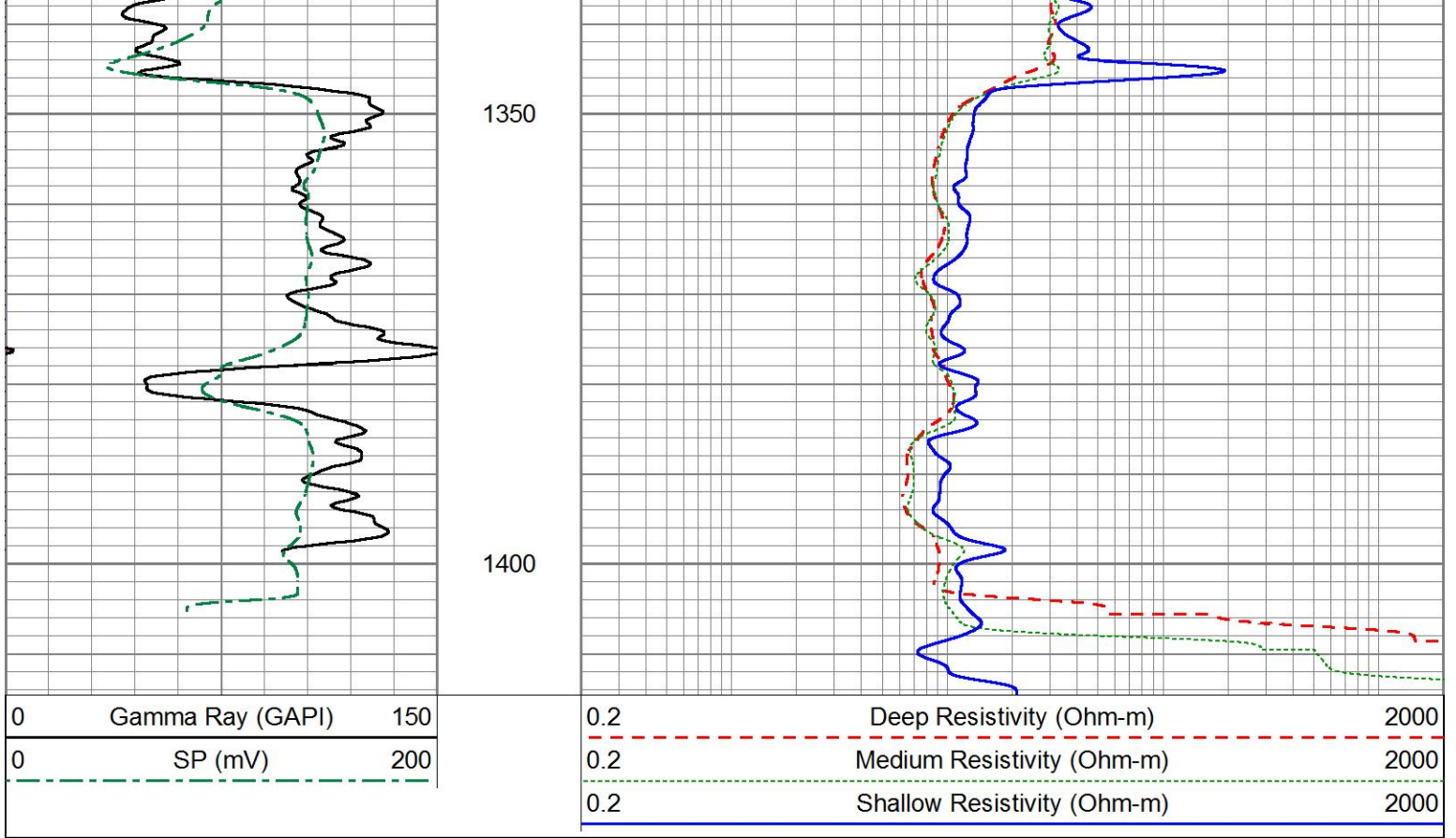
1150


1200

1250

1300





Sensor	Offset (ft)	Schematic	Description	Length (ft)	O.D. (in)	Weight (lb)
			Cable-CableHead Isulation Sub	1.42	3.00	20.00
CILD SP	10.92 10.42		DIL-GEAR (158) Dual Induction Electrical Log	21.36	4.00	395.00
CILM	7.00					
RLL3	1.65					

