



**COMPENSATED DENSITY
SIDEWALL NEUTRON LOG**

Company COLT ENERGY INC.
Well SCHAFFER # CS-12
Field BIG SANDY
County WOODSON
State KANSAS

Company COLT ENERGY INC.
Well SCHAFFER # CS-12
Field BIG SANDY
County WOODSON State KANSAS

Location: SW SW SE NE
2805' FSL & 1155' FEL
AP1 #: 15-207-29318-0000
SEC 22 TWP 26S RGE 14E
Permanent Datum GL Elevation 941'
Log Measured From GL
Drilling Measured From GL

Other Services
DIL
Elevation
K.B. ---
D.F. ---
G.L. 941'

Date	02-04-2016
Run Number	ONE
Depth Driller	1416'
Depth Logger	1416'
Bottom Logged Interval	1414'
Top Log Interval	SURFACE
Casing Driller	8.625" @ 41.50'
Casing Logger	8.625" @ 41.50'
Bit Size	6.75"
Type Fluid in Hole	WATER
Density / Viscosity	
pH / Fluid Loss	
Source of Sample	
Rm @ Meas. Temp	
Rmf @ Meas. Temp	
Rmc @ Meas. Temp	
Source of Rmf / Rmc	
Rm @ BHT	
Time Circulation Stopped	
Time Logger on Bottom	
Maximum Recorded Temperature	
Equipment Number	OW2
Location	HOMINY, OK
Recorded By	LOWERY
Witnessed By	MR. ASHLOCK

<<< Fold Here >>>

All interpretations are opinions based on inferences from electrical or other measurements and we cannot and do not guarantee the accuracy or correctness of any interpretation, and we shall not, except in the case of gross or willful negligence on our part, be liable or responsible for any loss, costs, damages, or expenses incurred or sustained by anyone resulting from any interpretation made by any of our officers, agents or employees. These interpretations are also subject to our general terms and conditions set out in our current Price Schedule.

Comments

OW2-8903
MATRIX LIMESTON 2.71 G/CC
ABHV COMPUTED WITH 4 1/2 CASING

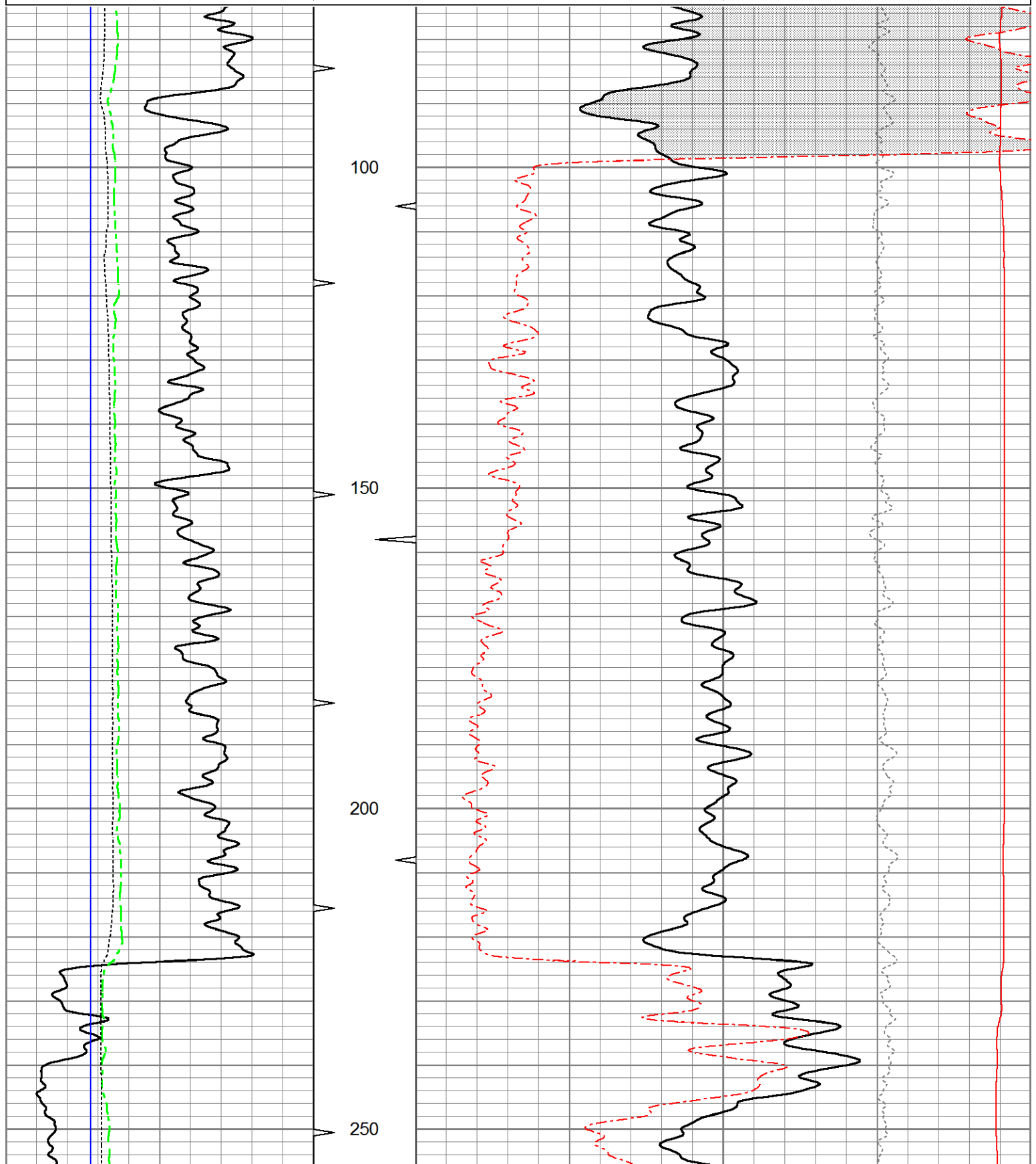
CREW : M. KIDD

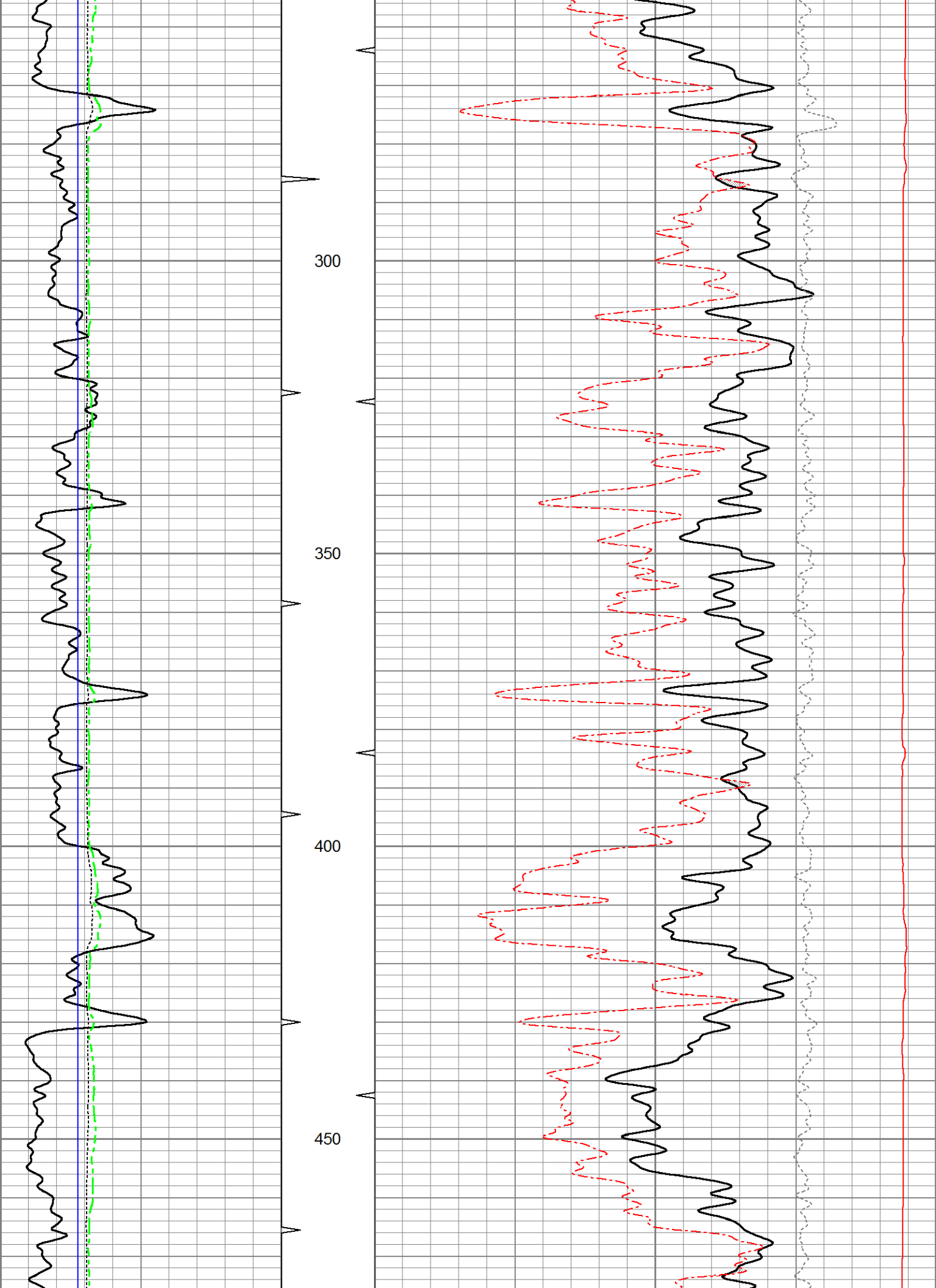


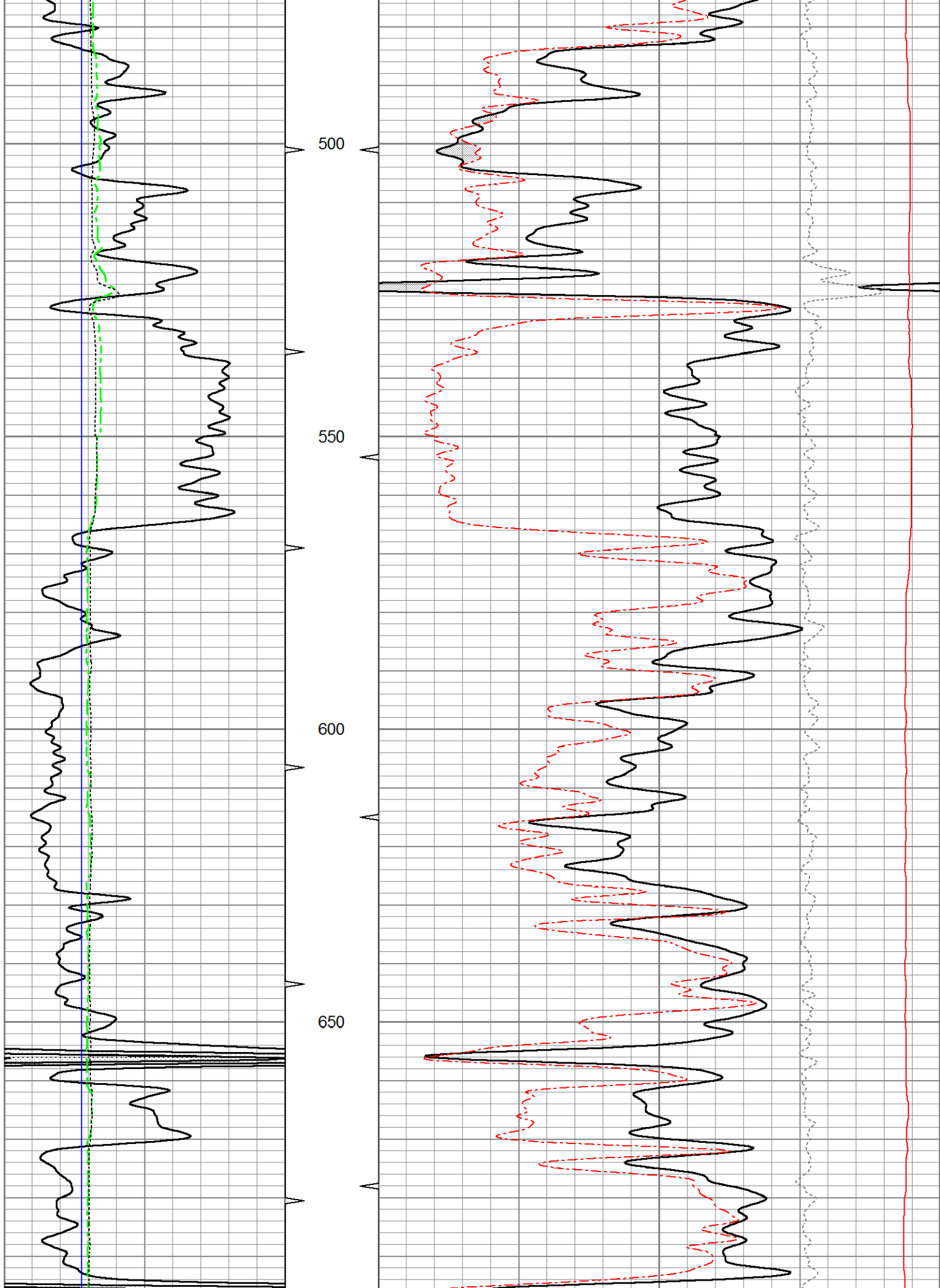
5" CDL/SWN SECTION

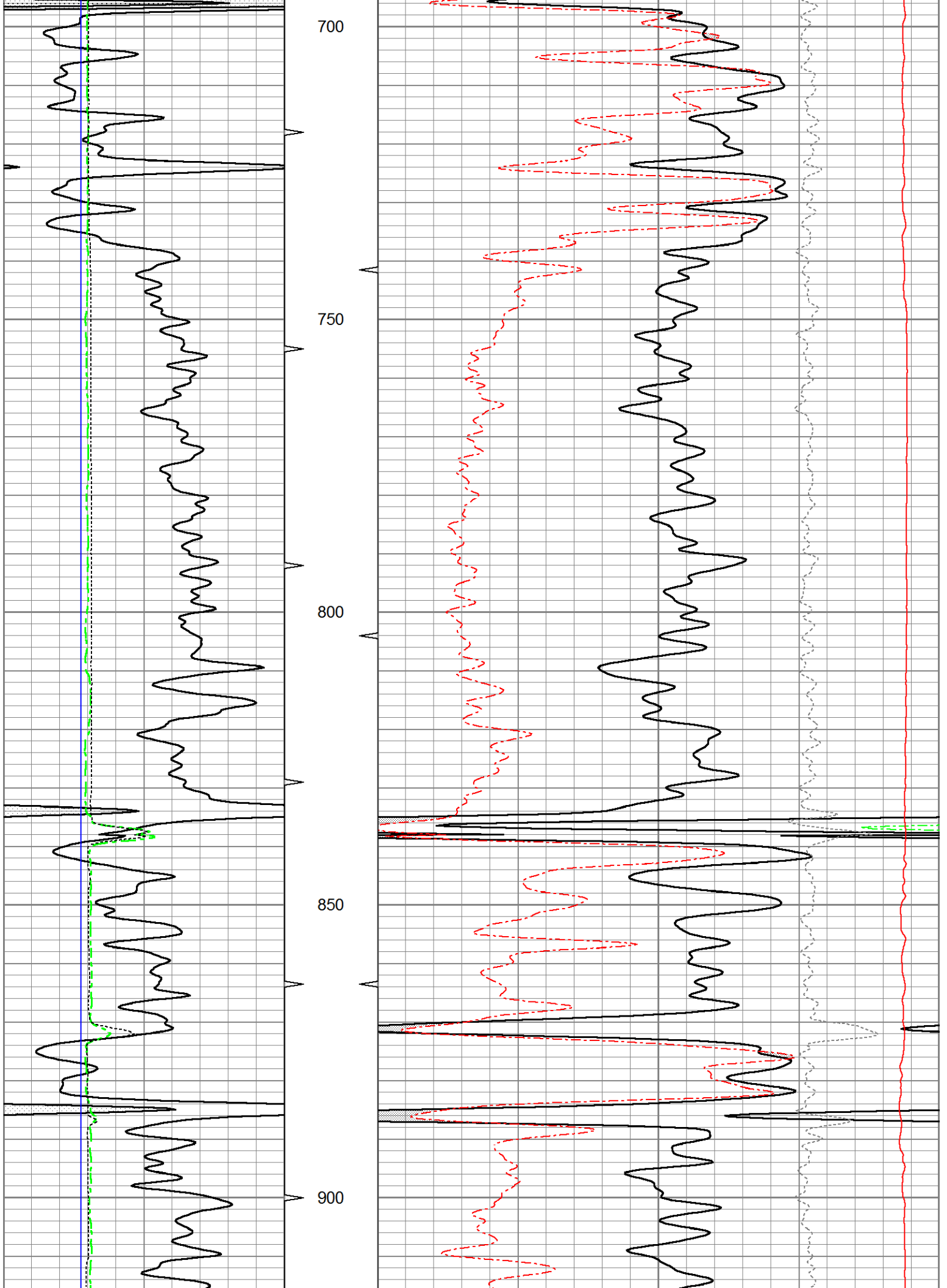
Database File ow2-8903 colt energy.db
 Dataset Pathname CDL/merge3
 Presentation Format _neu4
 Dataset Creation Thu Feb 04 12:33:33 2016
 Charted by Depth in Feet scaled 1:240

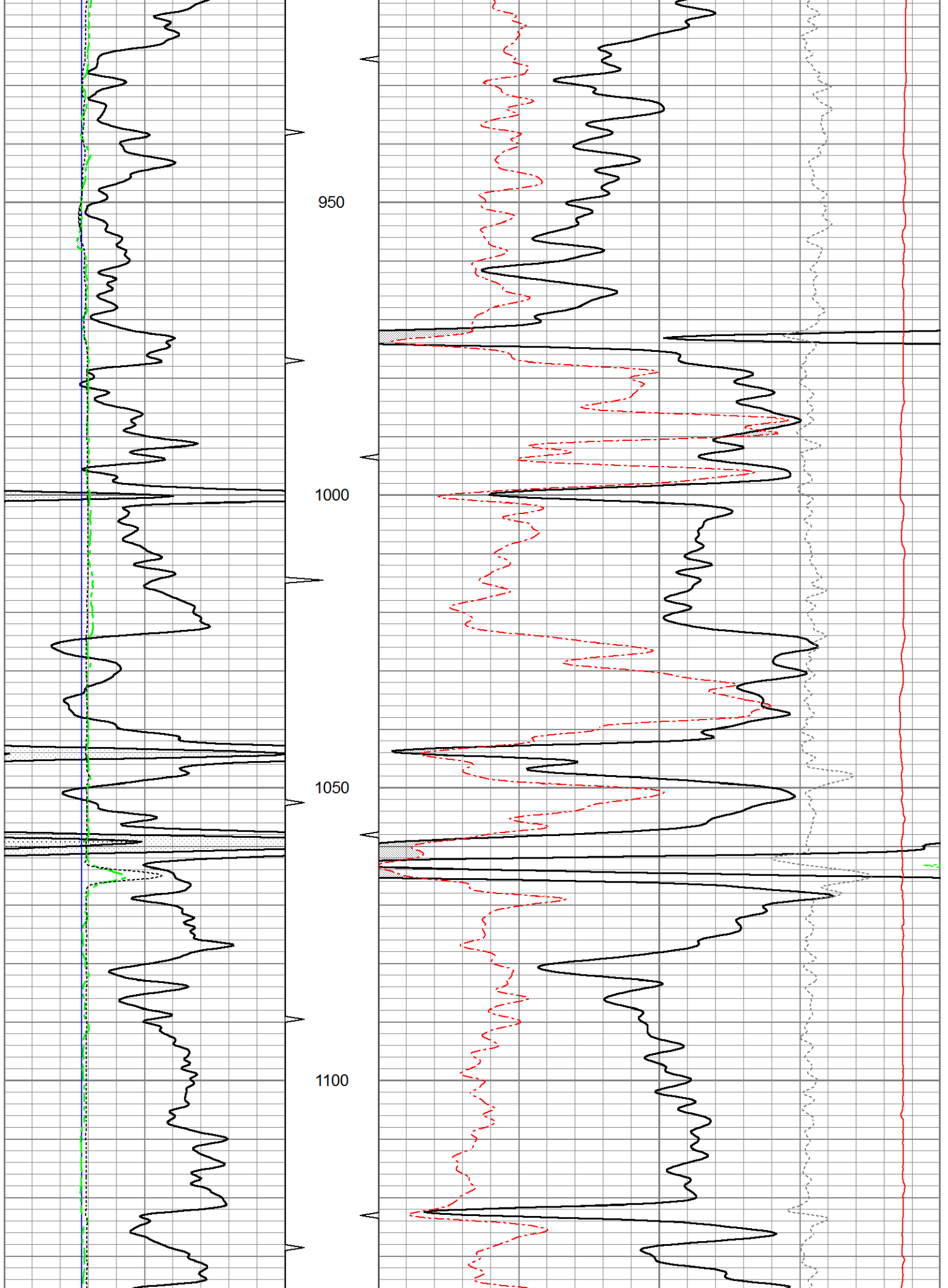
0	Gamma Ray (GAPI)	150	TBHV	30	Density Porosity (pu)	-10
4	Bit size (in)	14	ABHV	30	Neutron Porosity (pu)	-10
4	Neutron Caliper (in)	14			-0.5	Correction (g/cc) 0.5
4	Density Caliper (in)	14			5000	Line Tension (lb) 0

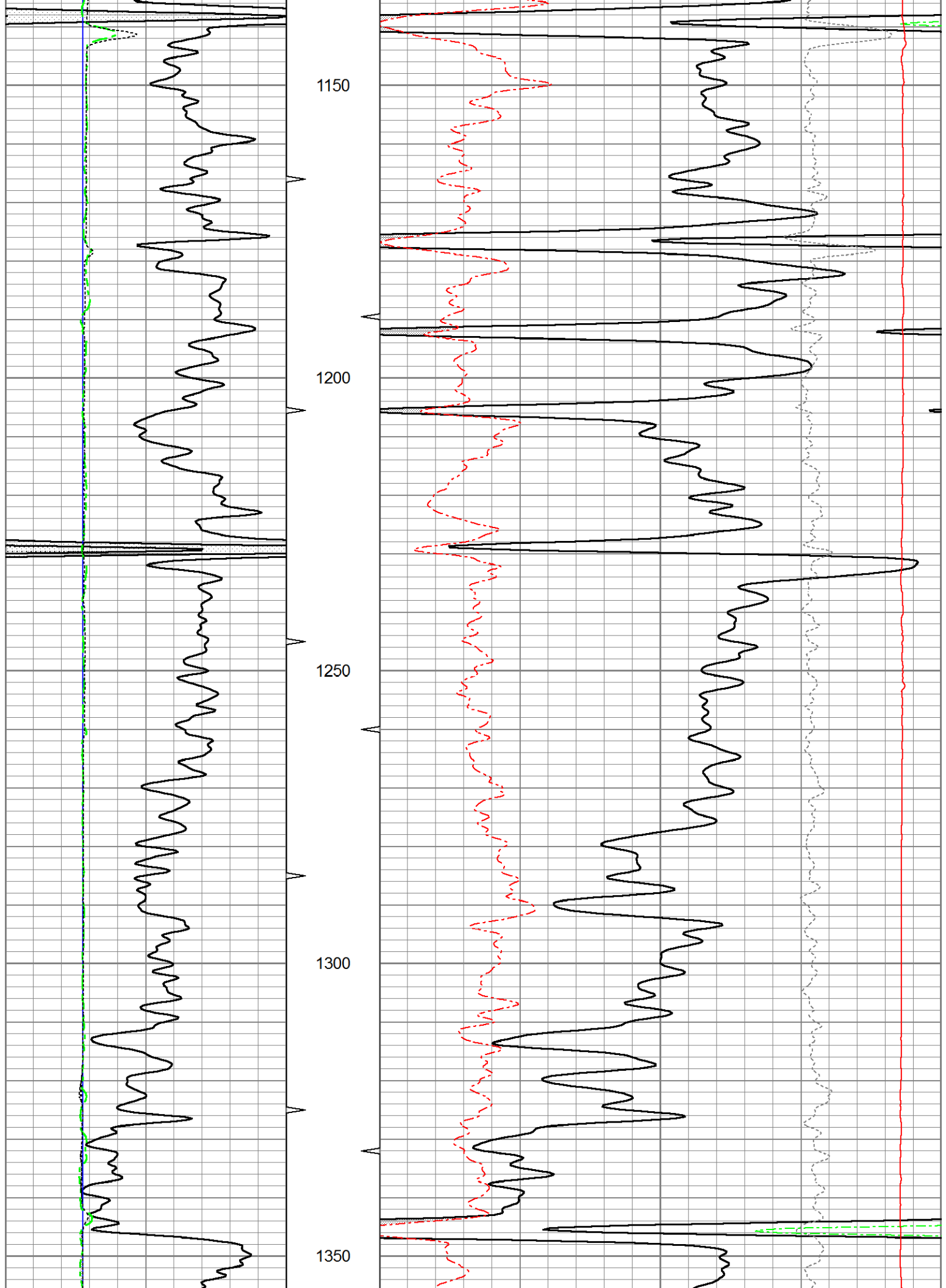


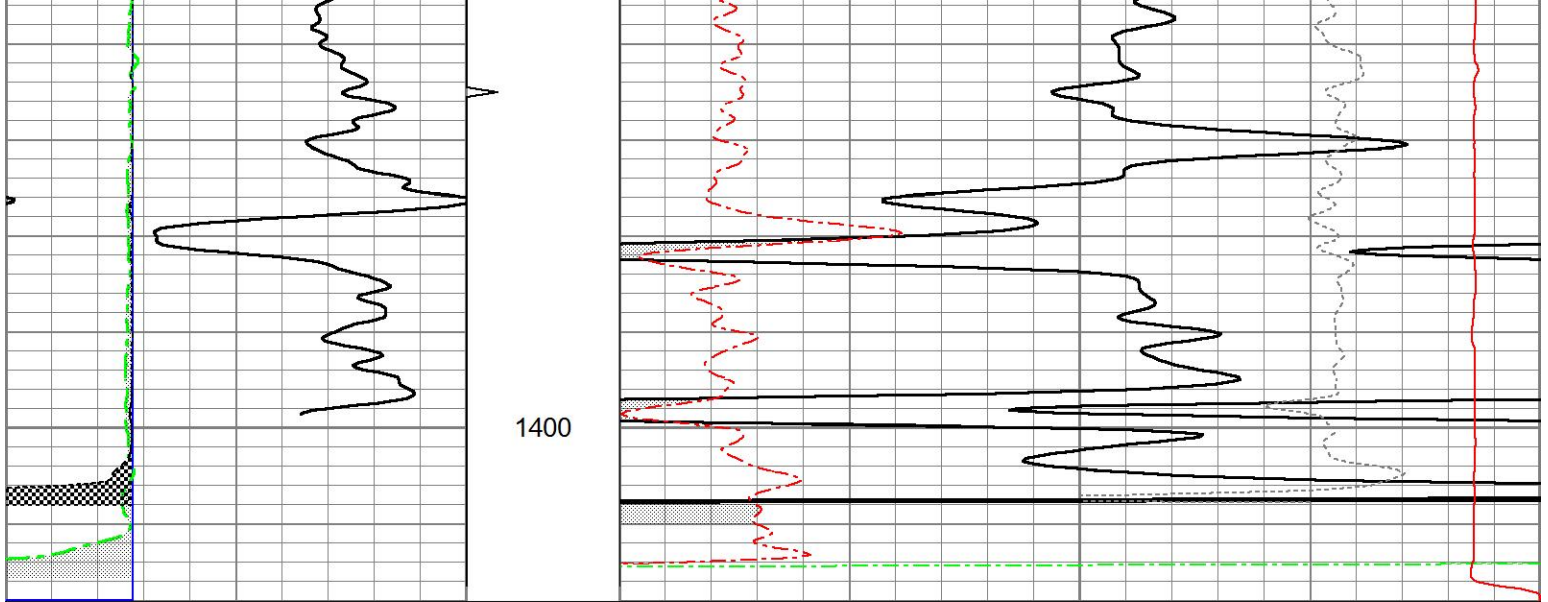












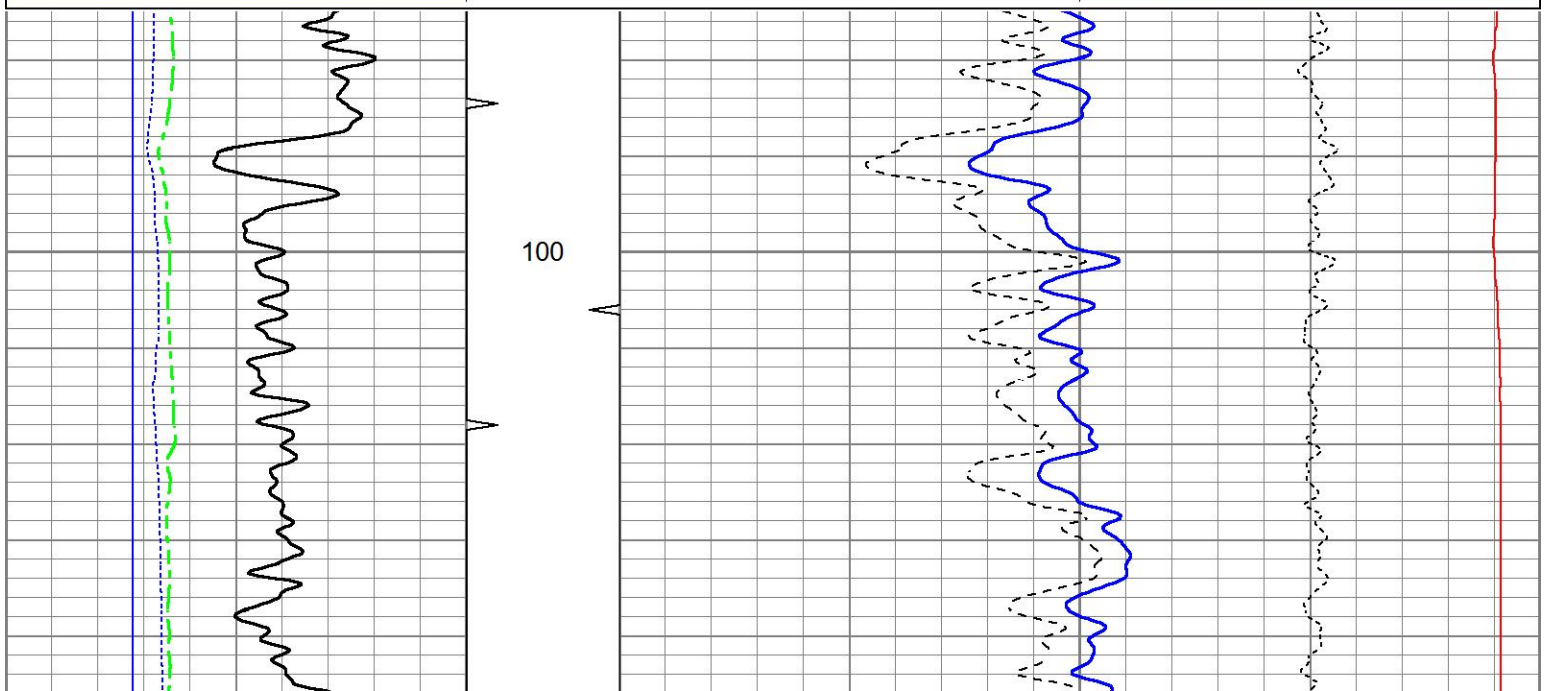
0	Gamma Ray (GAPI)	150	TBHV	30	Density Porosity (pu)	-10
4	Bit size (in)	14	ABHV	30	Neutron Porosity (pu)	-10
4	Neutron Caliper (in)	14			-0.5	Correction (g/cc) 0.5
4	Density Caliper (in)	14			5000	Line Tension (lb) 0

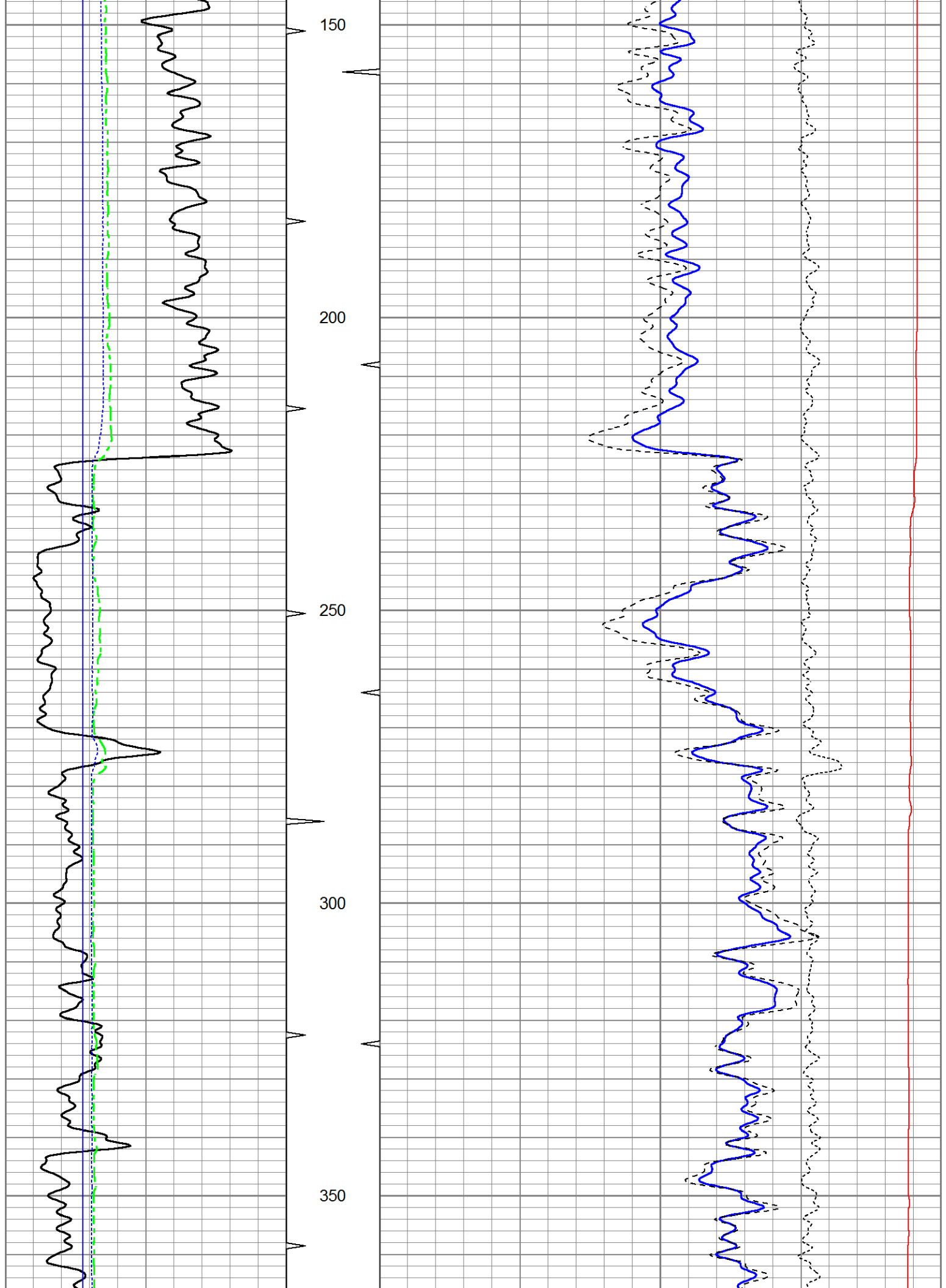


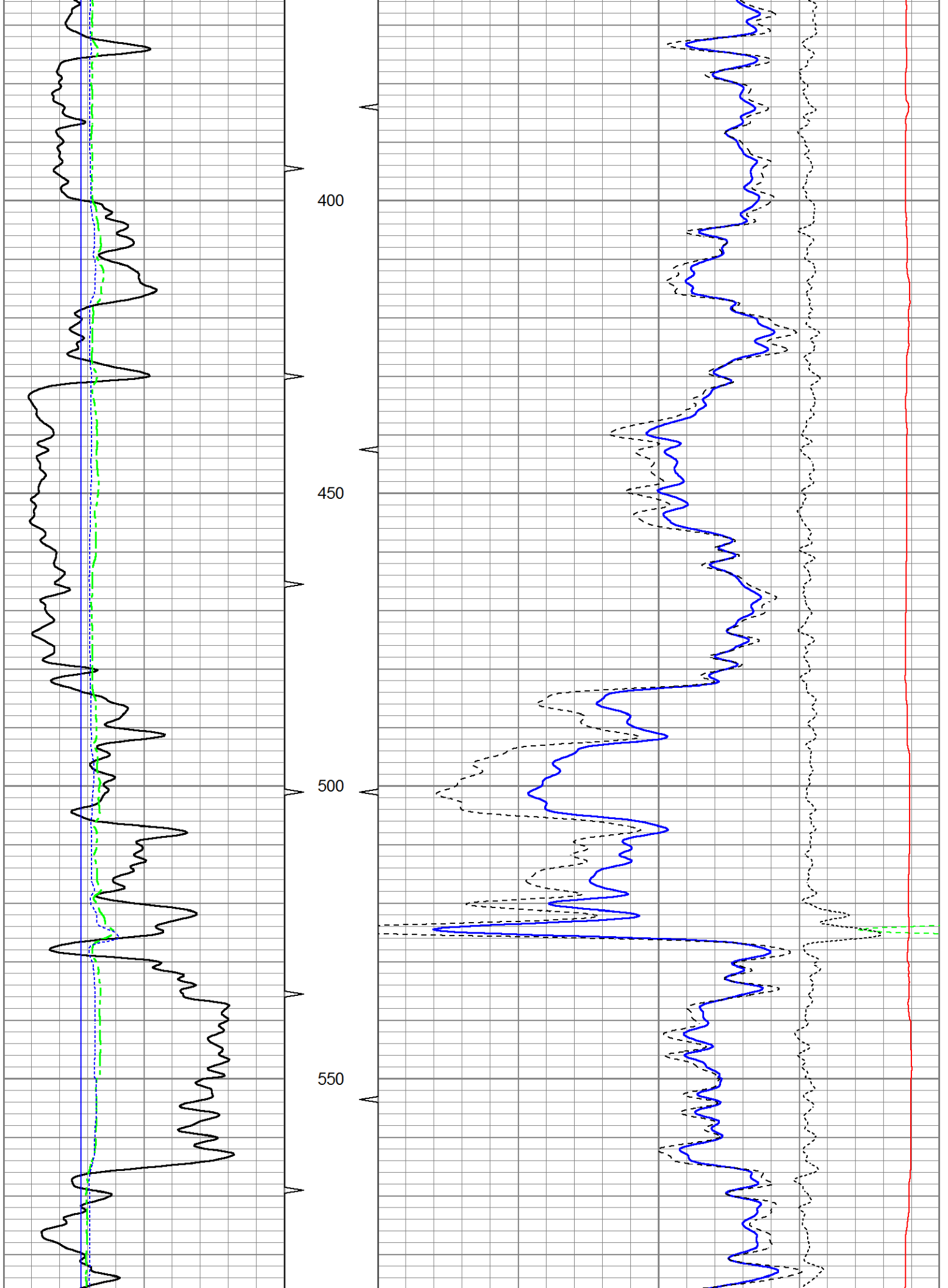
5" CDL SECTION

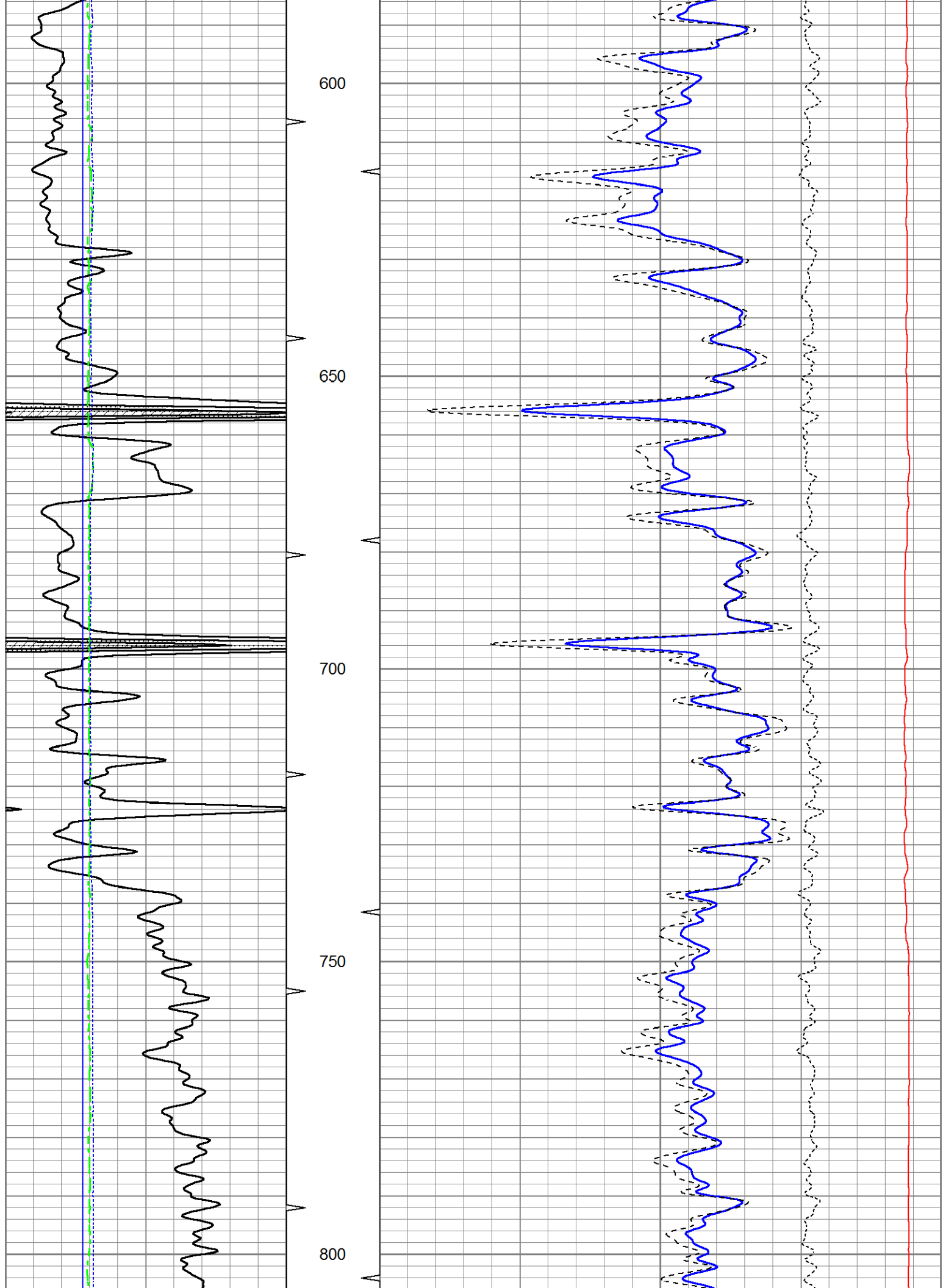
Database File ow2-8903 colt energy.db
 Dataset Pathname CDL/merge2
 Presentation Format bulk4
 Dataset Creation Thu Feb 04 12:32:42 2016
 Charted by Depth in Feet scaled 1:240

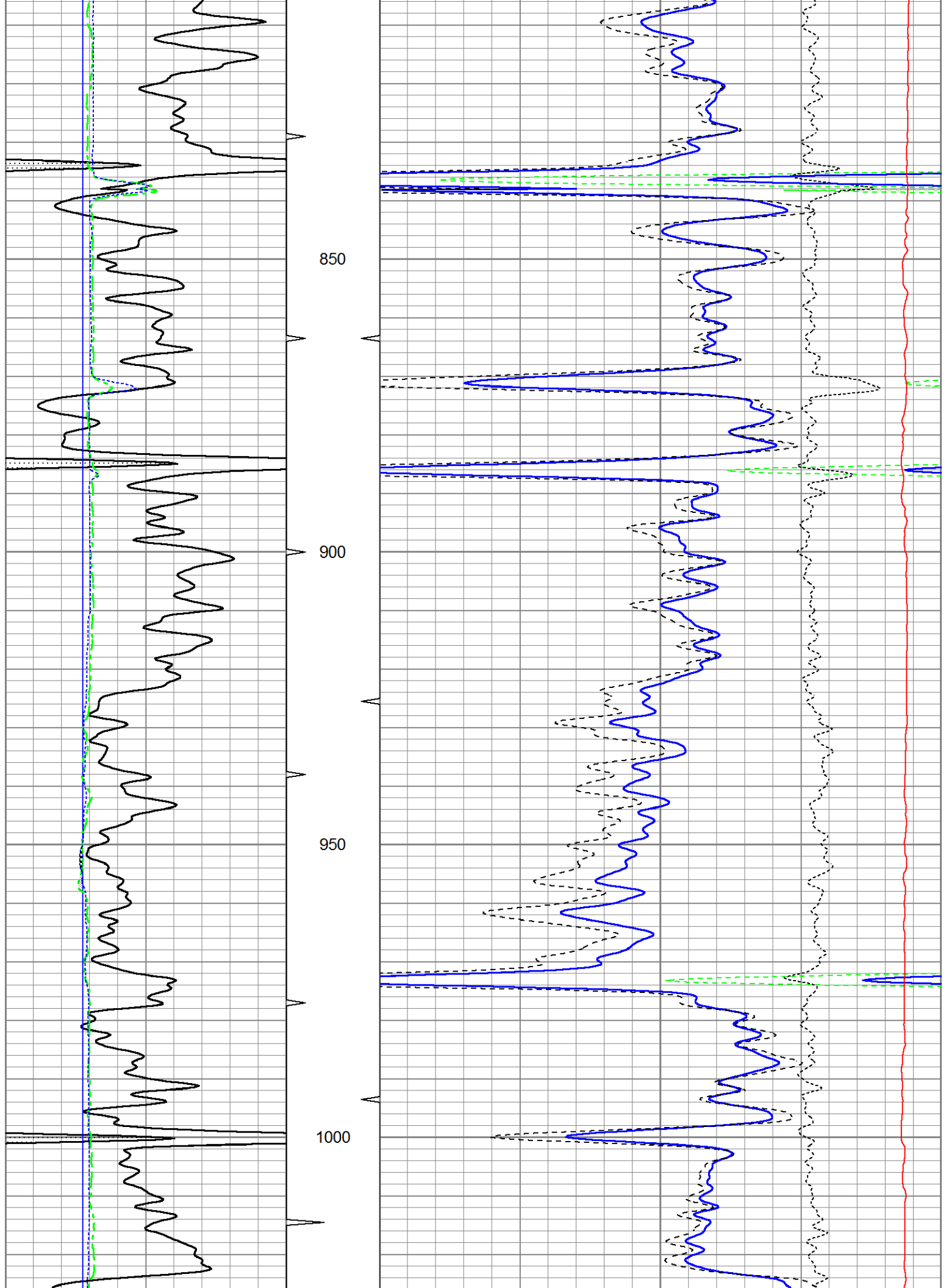
0	Gamma Ray (GAPI)	150	TBHV	2	Bulk Density (g/cc)	3
4	Bit size (in)	14	ABHV	30	Density porosity (pu)	-10
4	Neutron Caliper (in)	14			-0.5	Correction (g/cc) 0.5
4	Density Caliper (in)	14			5000	Line Tension (lb) 0

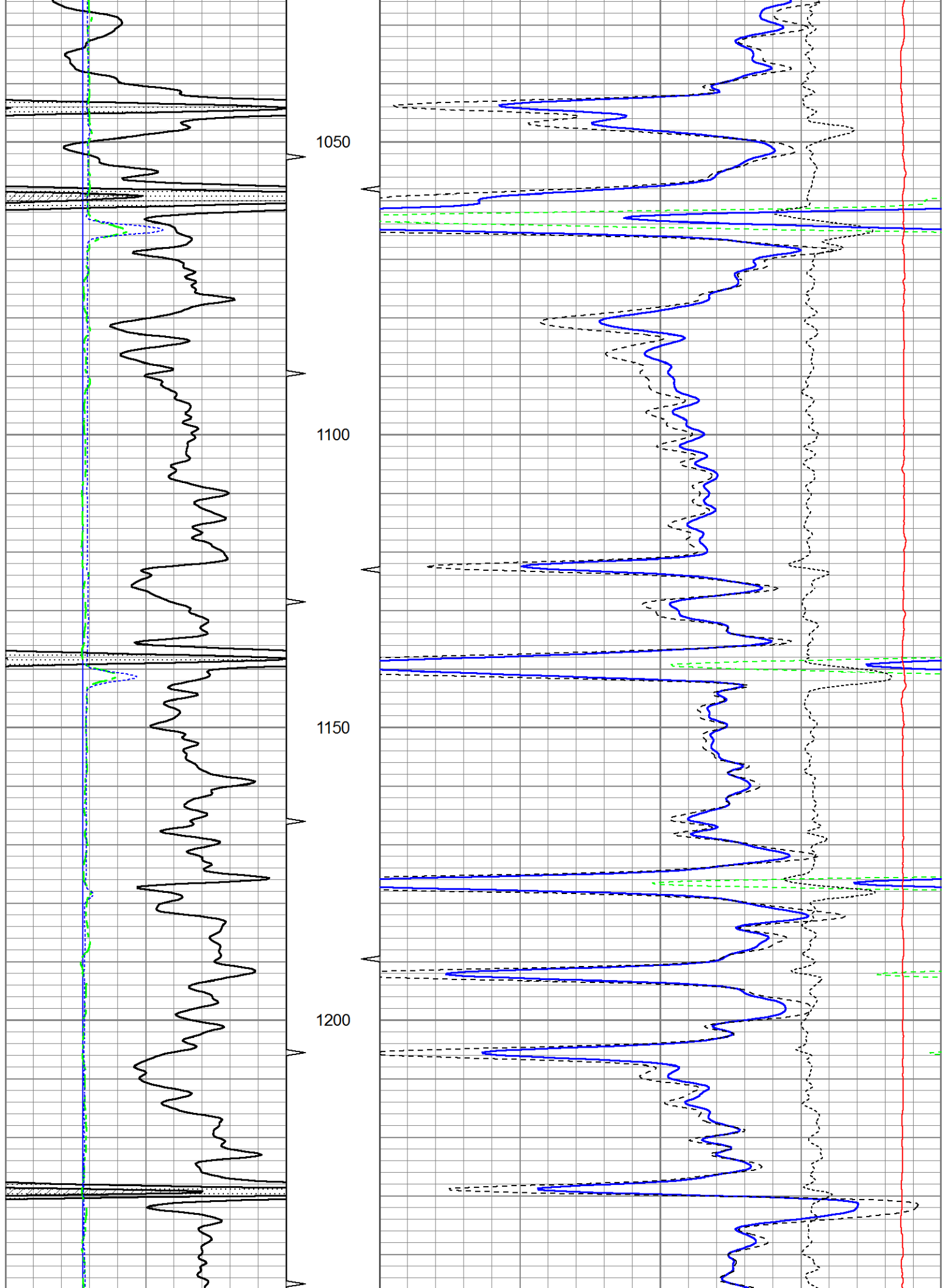


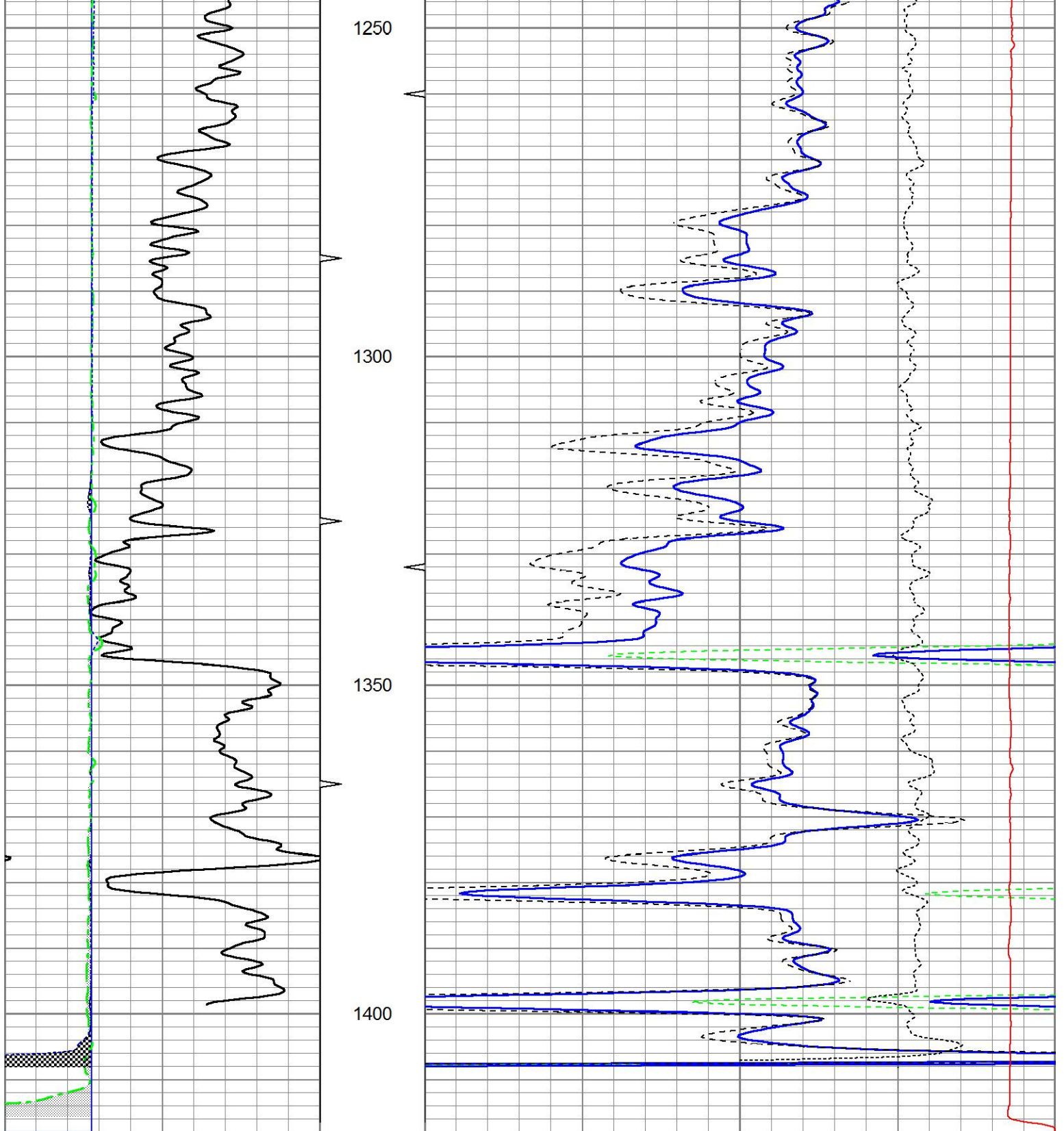












0	Gamma Ray (GAPI)	150	TBHV	2	Bulk Density (g/cc)	3	
4	Bit size (in)	14	ABHV	30	Density porosity (pu)	-10	
4	Neutron Caliper (in)	14			-0.5	Correction (g/cc)	0.5
4	Density Caliper (in)	14			5000	Line Tension (lb)	0

Sensor	Offset (ft)	Schematic	Description	Length (ft)	O.D. (in)	Weight (lb)
			Cable-CableHead Isolation Sub	1.42	3.00	20.00

GR	15.60		Gamma-Oilex2122 (2122) Gamma Ray Section	2.83	3.50	75.00
LSD	10.22		Density-Oilex2122 (2122) Density Section	6.08	4.00	250.00
DCAL	9.94					
SSD	9.76					
SCAL	2.54		Neutron-Sidewall3015 (3015) Sidewall Neutron Section	7.81	4.00	150.00
SWN	2.15					
NEU	2.15					

Dataset: ow2-8903 colt energy.db: field/well/CDL/pass1
 Total length: 18.15 ft
 Total weight: 495.00 lb
 O.D.: 4.00 in