



GAMMA RAY LOG

Comp. LARSON ENGINEERING LLC
 Well SCHOEPF #2-15 SWD
 Field N/A
 Co. LANE
 State KANSAS

Company LARSON ENGINEERING LLC
 Well SCHOEPF #2-15 SWD
 Field N/A
 County LANE State KANSAS

Location: 1725' FNL & 2554' FWL
 SEC 15 TWP 18S RGE 30W
 Permanent Datum GROUND LEVEL Elevation 2868'
 Log Measured From KELLY BUSHING 10' Above GL
 Drilling Measured From KELLY BUSHING
 Other Services: PERF
 Elevation K.B. 2878'
 D.F. N/A
 G.L. 2868'

Date of Service	3/26/2018			
Run Number	ONE			
Depth Driller or PBTD	2075'			
Depth Logger	2073'			
Bottom Log Interval	2071'			
Top Log Interval	00'			
Open Hole Size	7.875"			
Type Fluid	WATER			
Fluid Level	FULL			
Fluid Density	N/A			
Max. Recorded Temperature	98 DEG F			
Max. Wellhead Pressure	00 PSI			
Wellhead Connection	WELHEAD			
Estimated Cement Top	N/A			
Unit Number	106			
Wireline Size	0.288"			
Location	HAYS			
Recorded By	T. MARTIN			
Witnessed By	BRIAN CABLE			
Tubing Record	Size	Wt/Ft	Top	Bottom
Surface Casing				
Production Casing	4.5"	11.6#	00'	TD
Liner Record				

<<< Fold Here >>>

All interpretations are opinions based on inferences from electrical or other measurements and Pioneer Wireline Services, LLC cannot and does not guarantee the accuracy or correctness of any interpretation, and Pioneer Wireline Services, LLC will not be liable or responsible for any loss, costs, damages, or expenses incurred or sustained by anyone resulting from any interpretation made by any of our officers, agents or employees.

Comments

N/A DENOTES NOT AVAILABLE OR NON-APPLICABLE.

DIGHTON, 8 W, 1 N, 1/2 W, S INTO

THANK YOU FOR USING PIONEER ENERGY SERVICES!

Your Pioneer Energy Services Crew	Tool Data - Services	Serial Number
Engineer: T. MARTIN Operator: Operator: Operator:		

Sensor	Offset (ft)	Schematic	Description	Length (ft)	O.D. (in)	Weight (lb)
			CENT-Probe Probe Centralizer	2.83	2.75	20.00
CCL	3.63					
GR	2.30		GR_CCL-2 3/4" Probe (111032)	4.54	2.75	50.00

Dataset: laron_schoepf_#2-15_swd.db: field/well/GRCCCL/pass3
 Total length: 7.37 ft
 Total weight: 70.00 lb
 O.D.: 2.75 in

Log Variables

DatabaseC:\ProgramData\Warrior\Data\laron_schoepf_#2-15_swd.db
 Dataset field/well/GRCCCL/pass3.11/_vars_

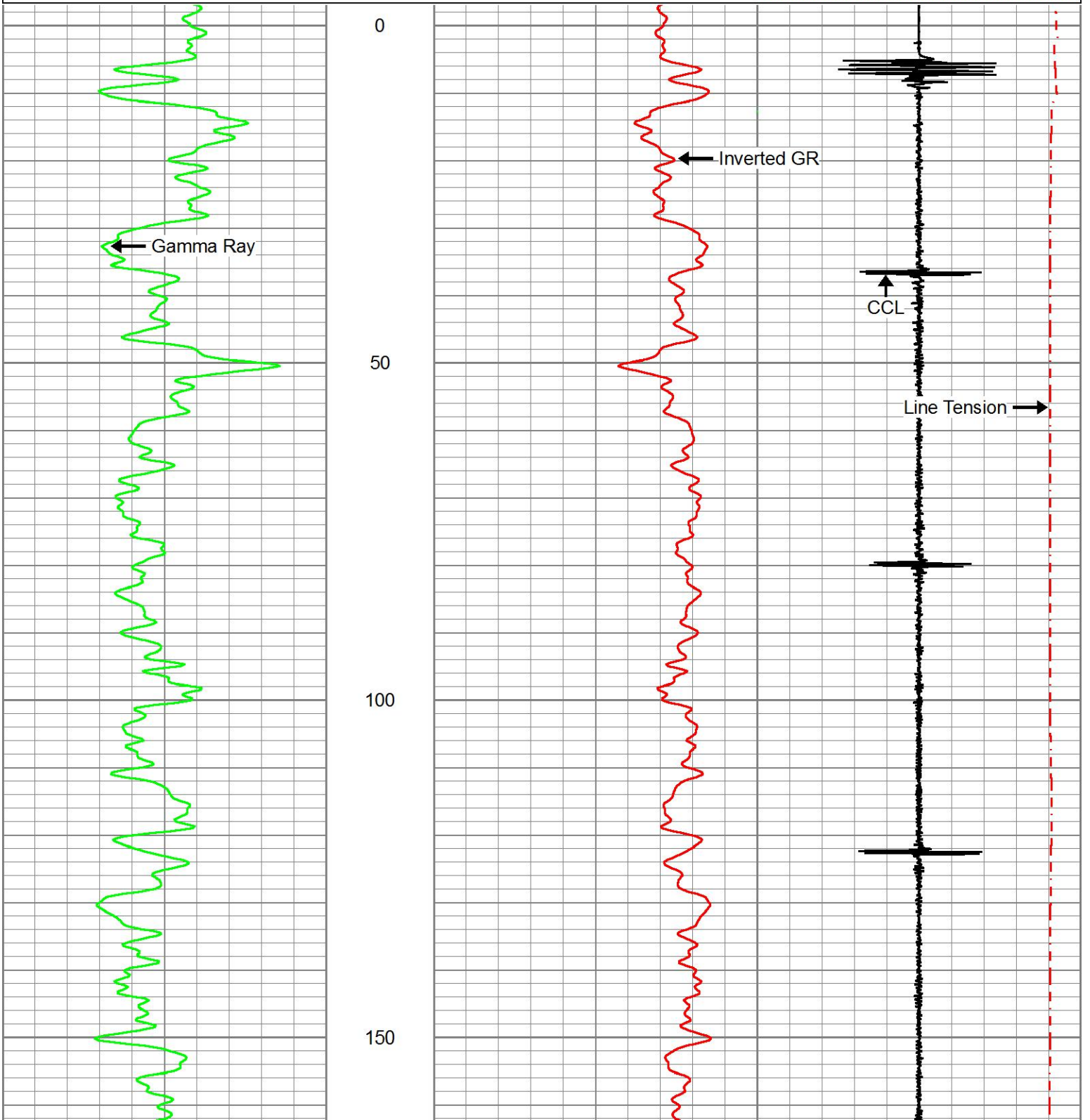
Top - Bottom

SRFTEMP	CASETHCK	CASEOD	PERFS	TDEPTH	BOTTEMP	BOREID
degF	in	in		ft	degF	in
50	0.25	4.5	0	2073	98	7.875

ZERO PSI APPLIED AT SURFACE

Database File laron_schoepf_#2-15_swd.db
 Dataset Pathname GRCCL/pass3
 Presentation Format pinr_gr-ccl_1
 Dataset Creation Mon Mar 26 10:20:40 2018
 Charted by Depth in Feet scaled 1:240

0	GR	150	300	Inverted GR	0 -9	CCL	9	
						2000	Line Tension (lb)	0
						0	LSPD (ft/min)	100



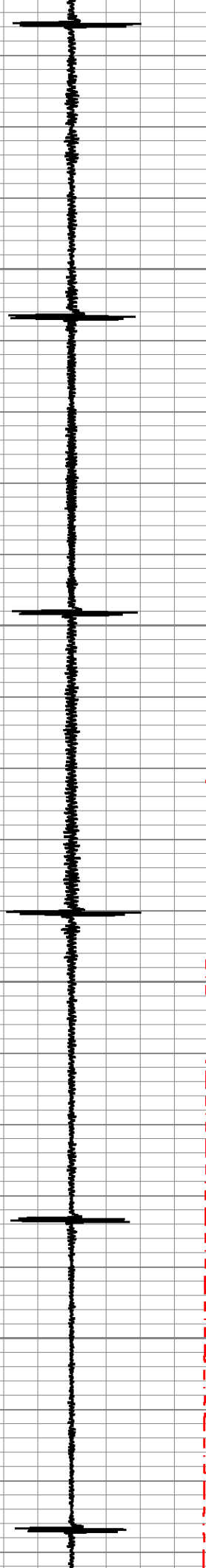
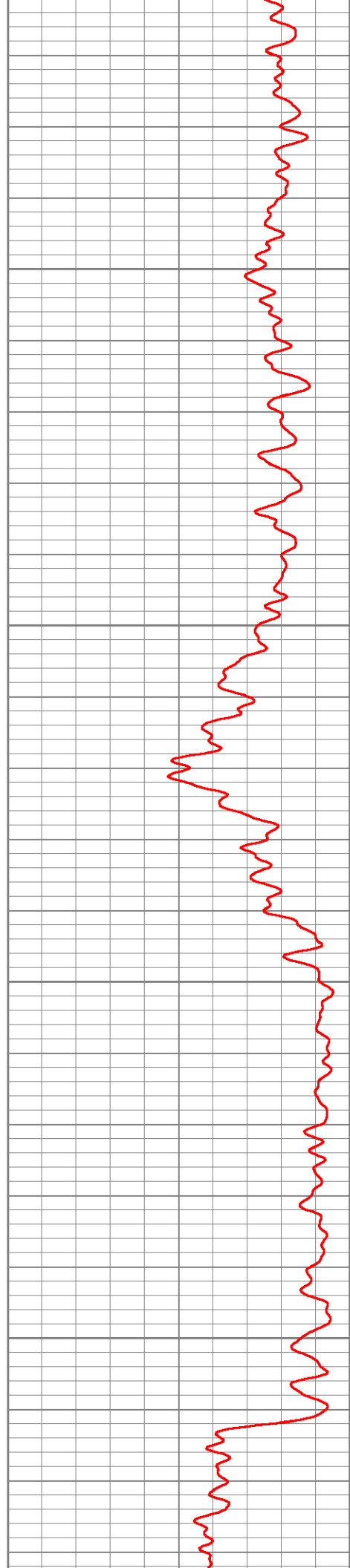


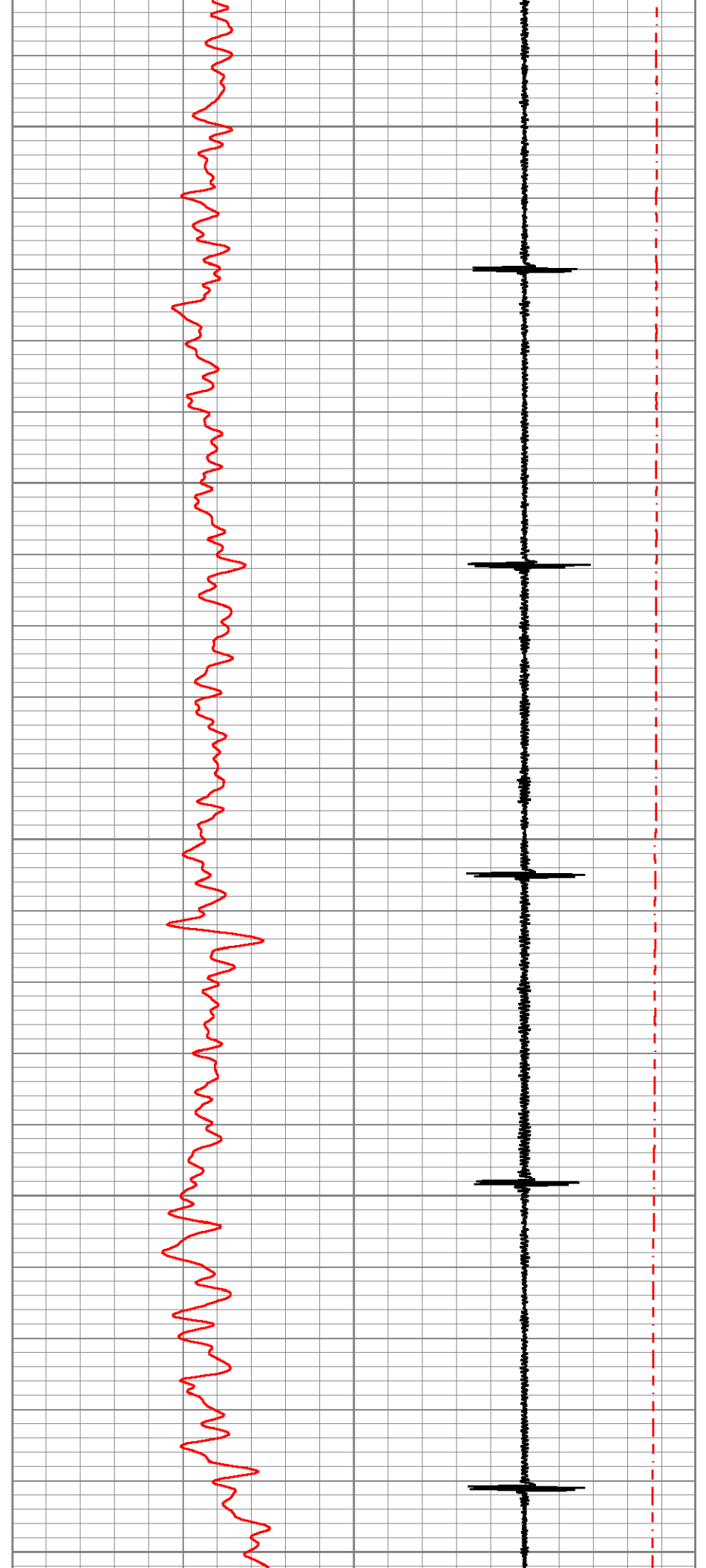
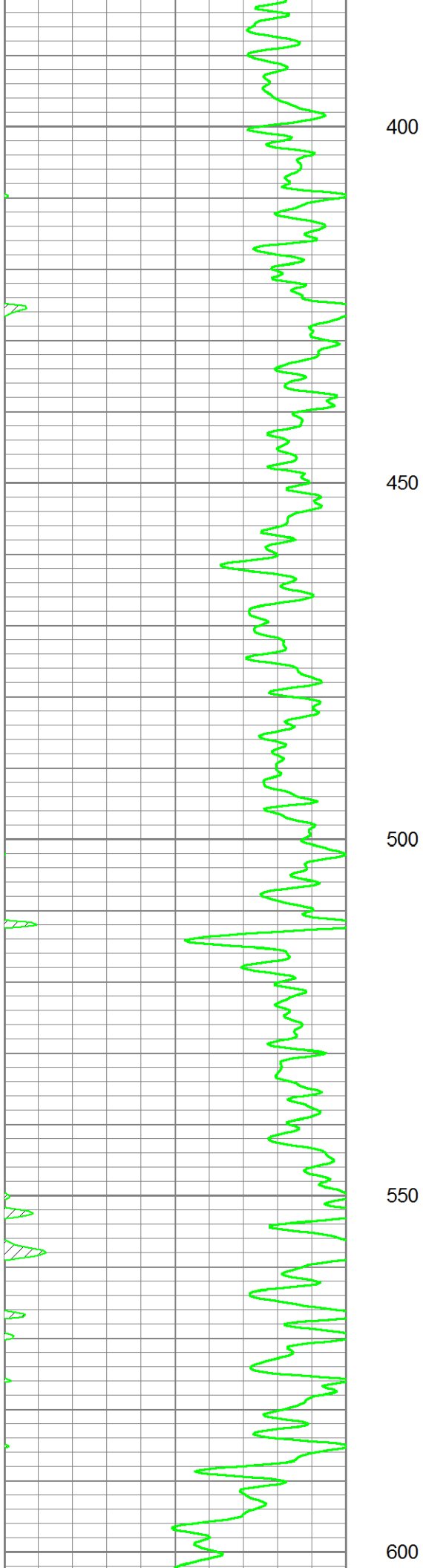
200

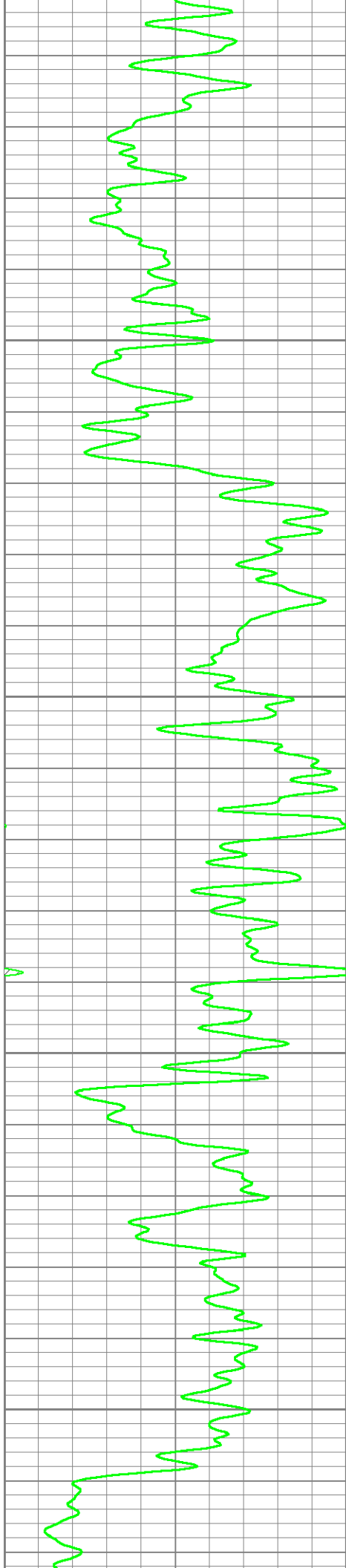
250

300

350





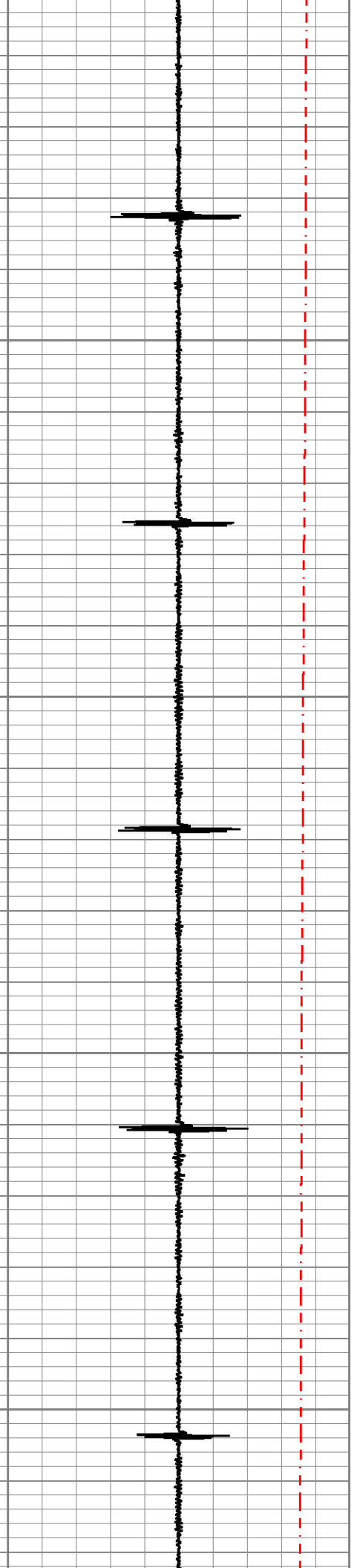


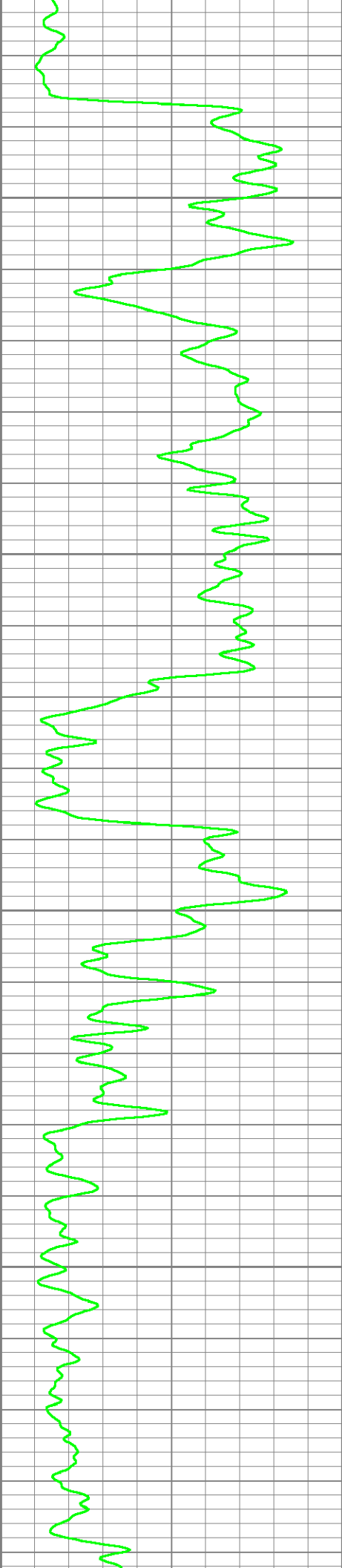
650

700

750

800



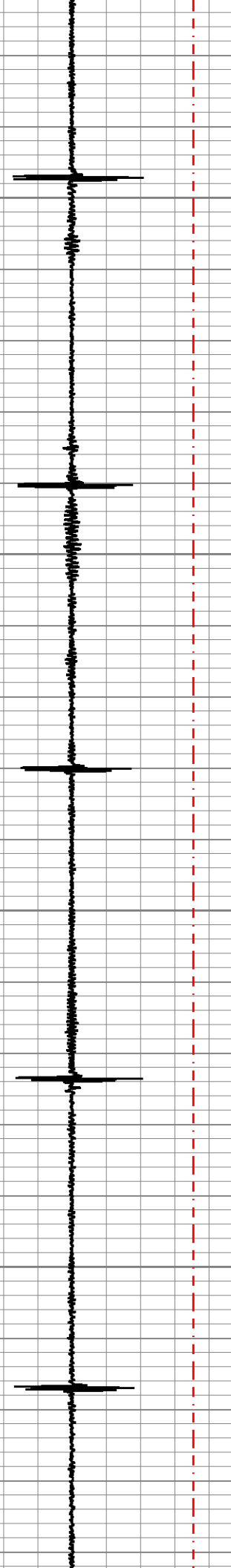
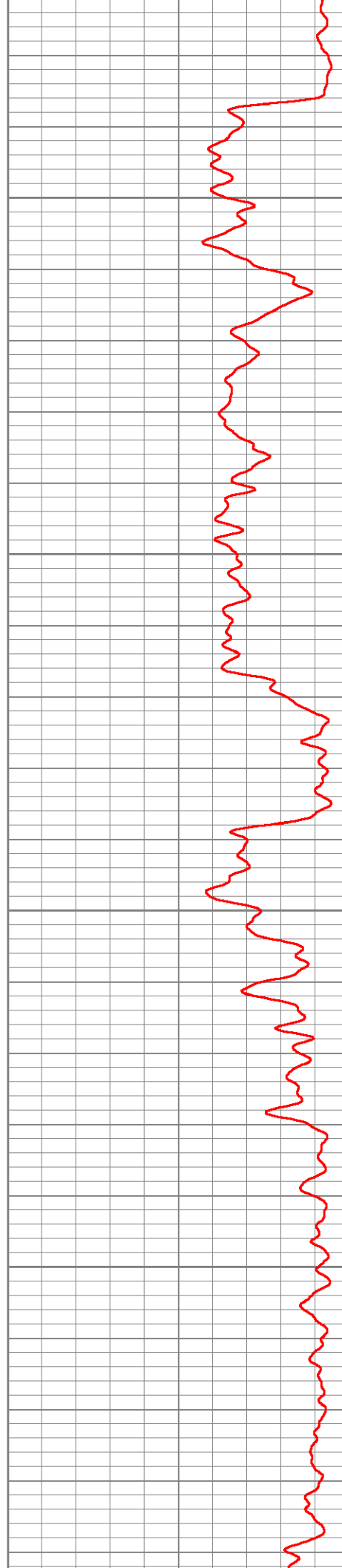


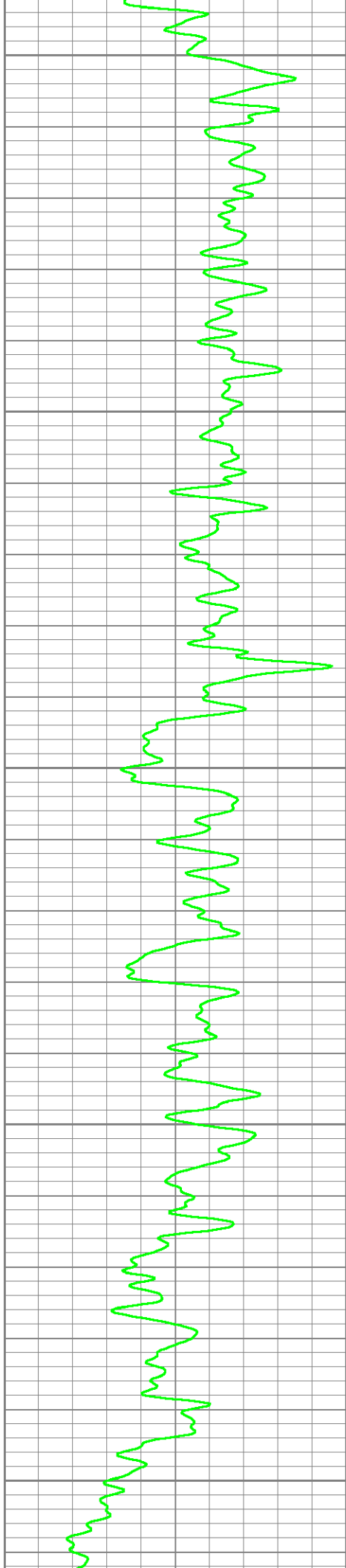
850

900

950

1000





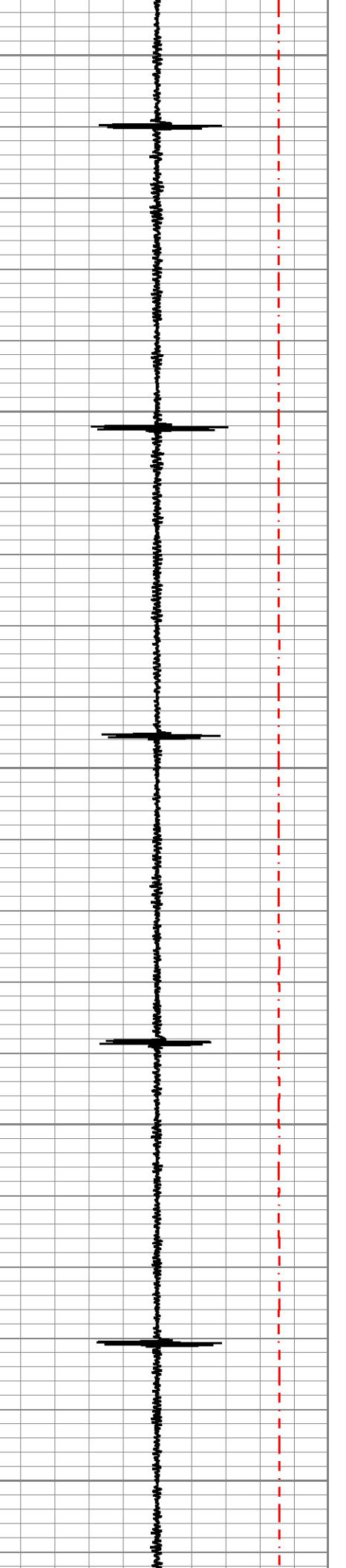
1050

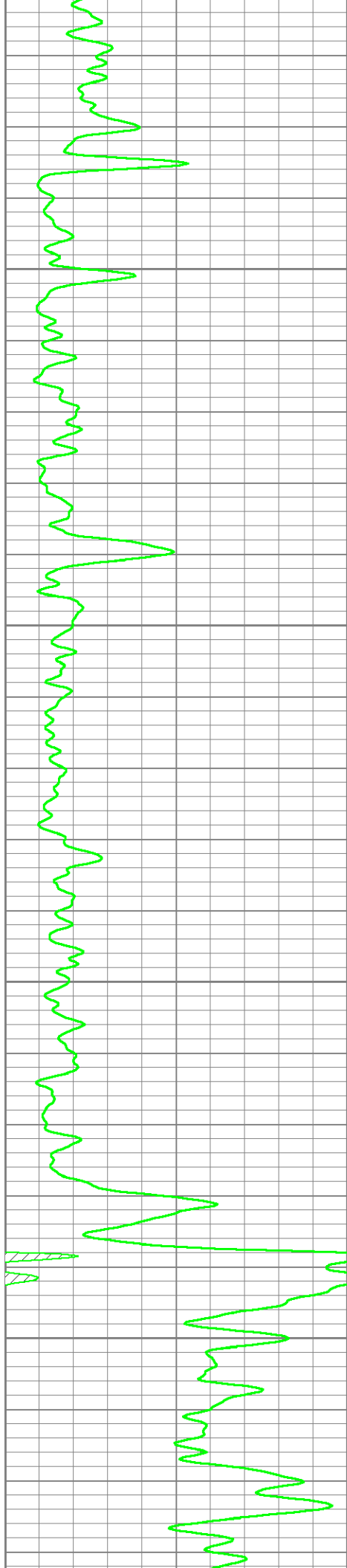
1100

1150

1200

1250



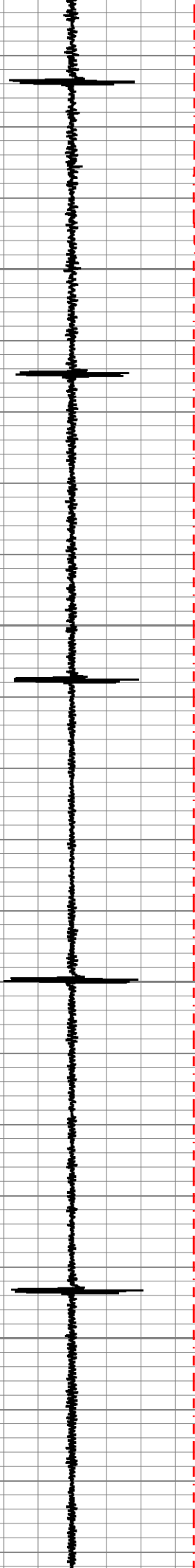
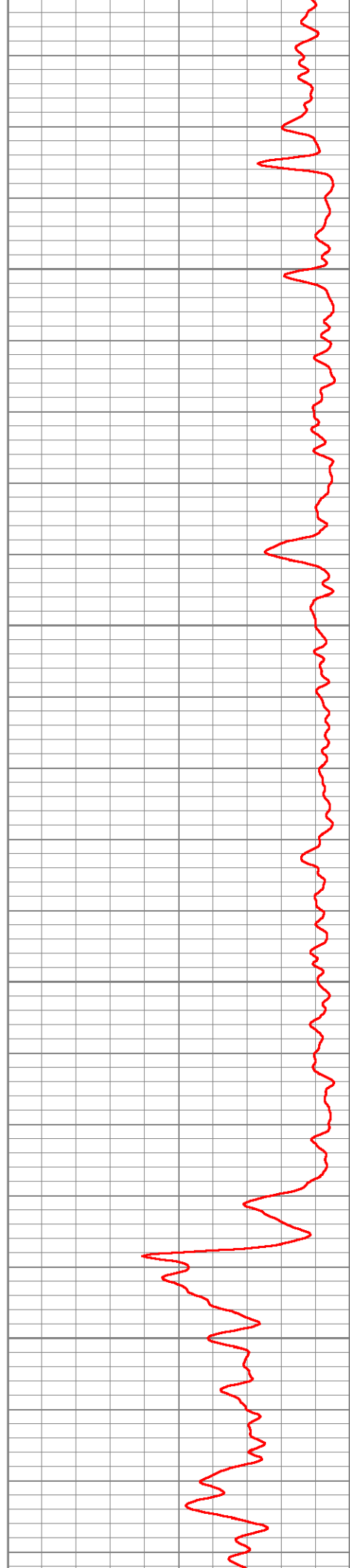


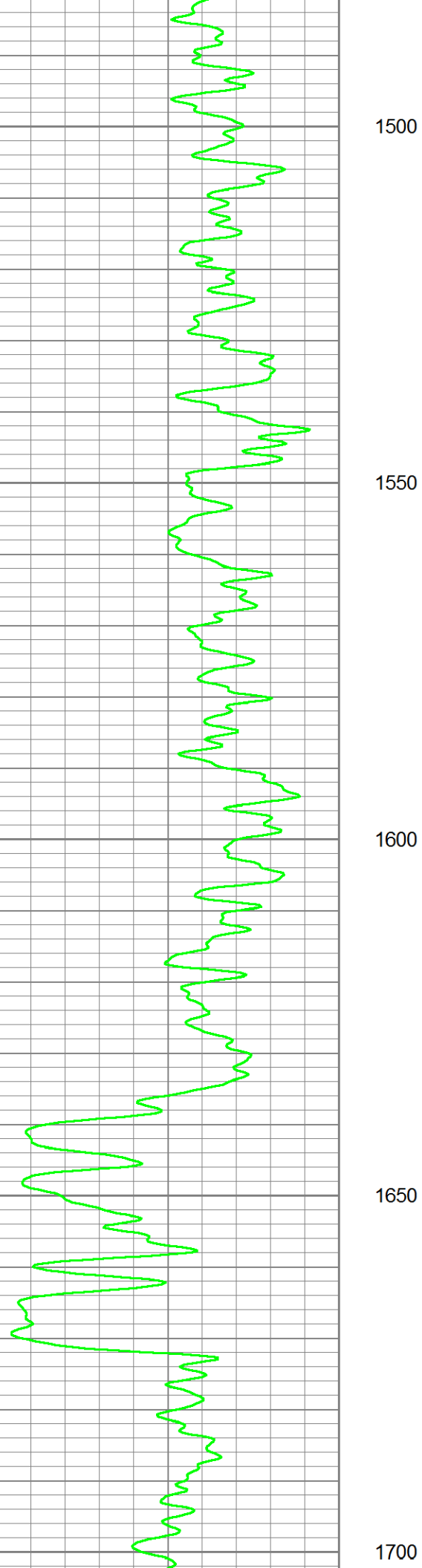
1300

1350

1400

1450





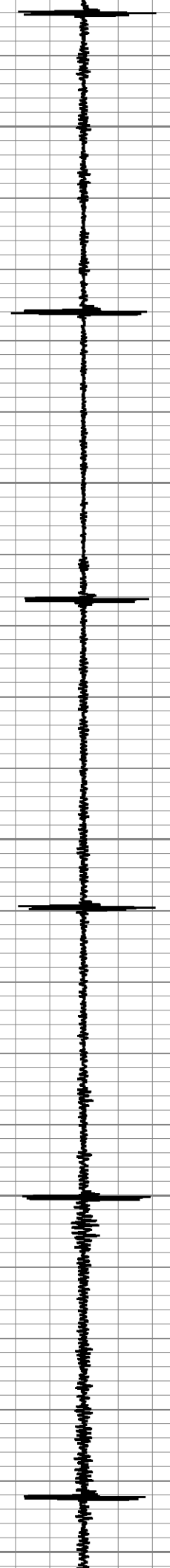
1500

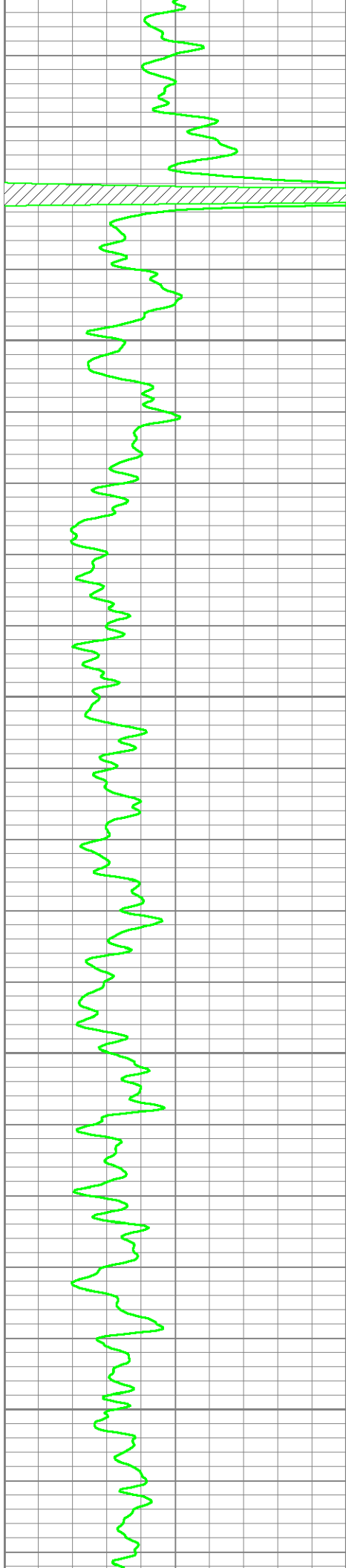
1550

1600

1650

1700



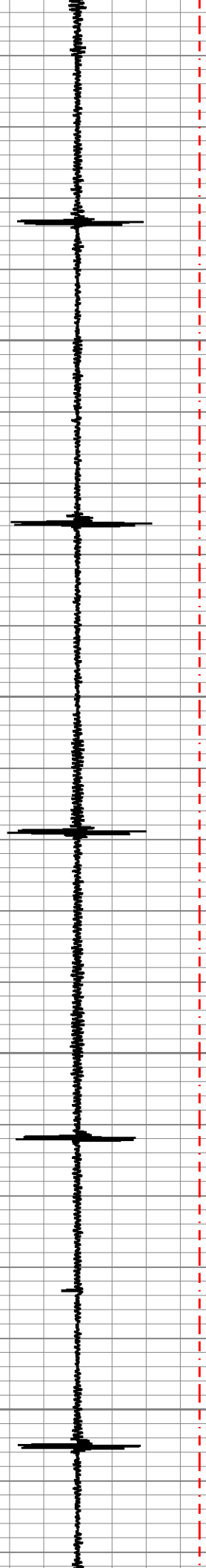
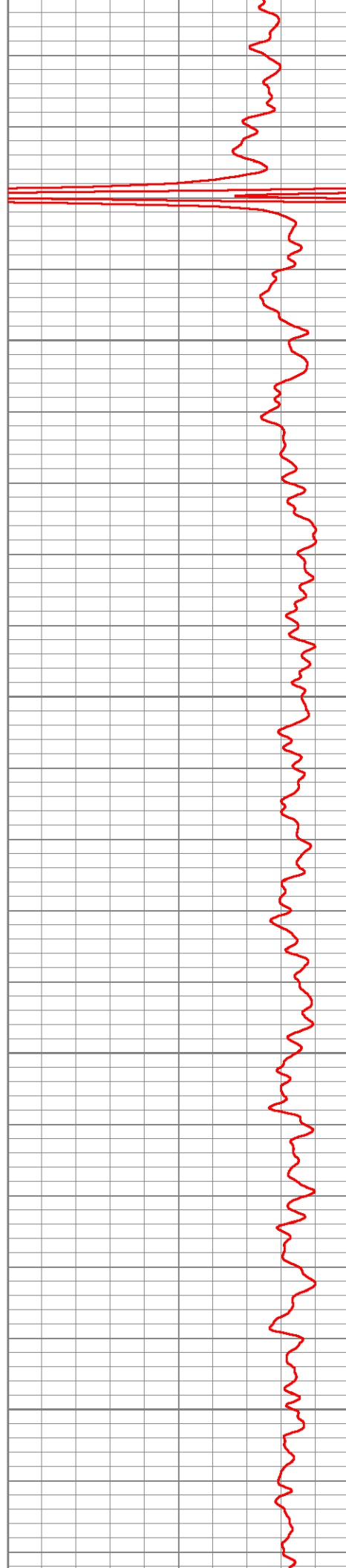


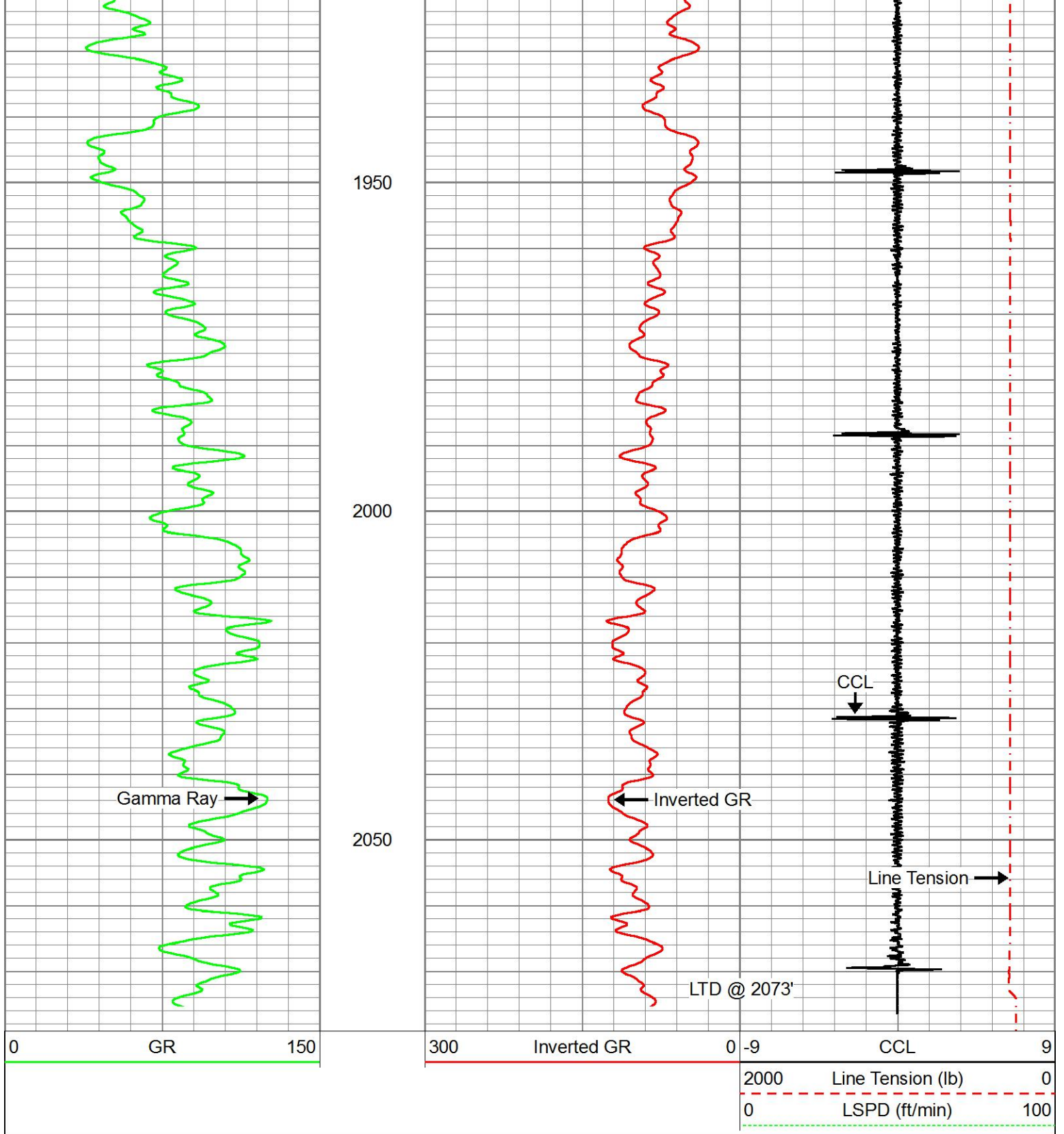
1750

1800

1850

1900

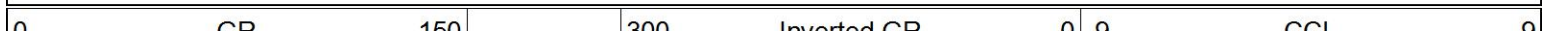




REPEAT SECTION

ZERO PSI APPLIED AT SURFACE

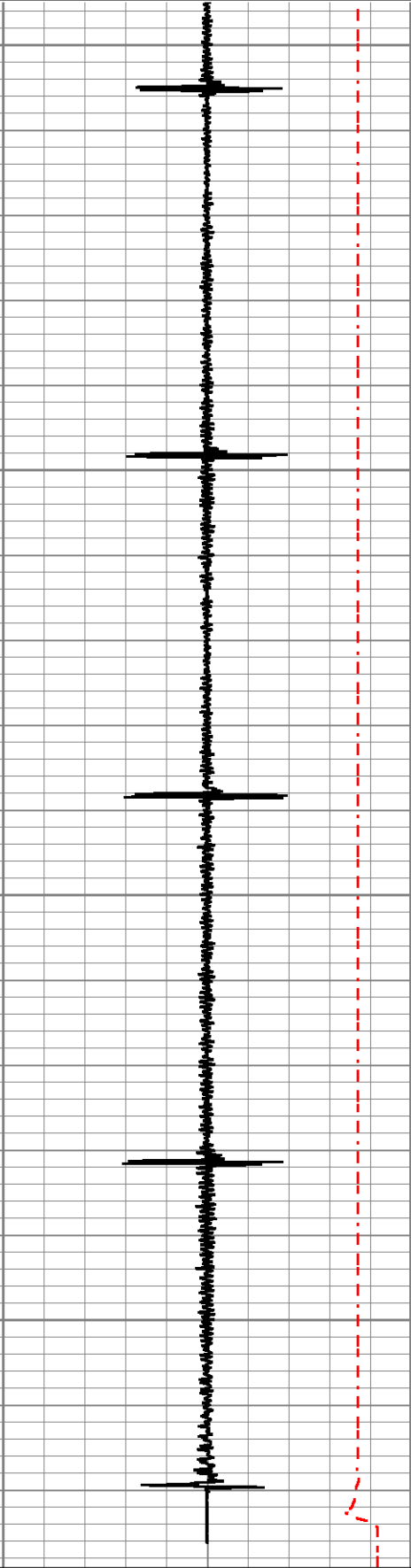
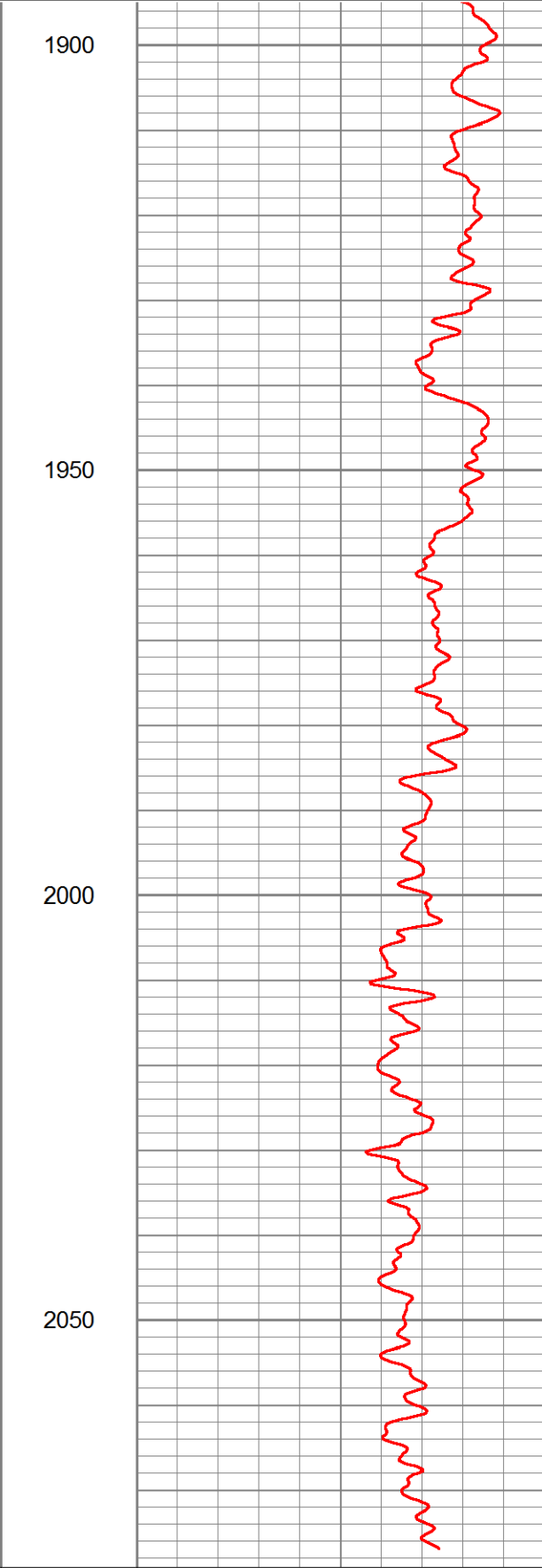
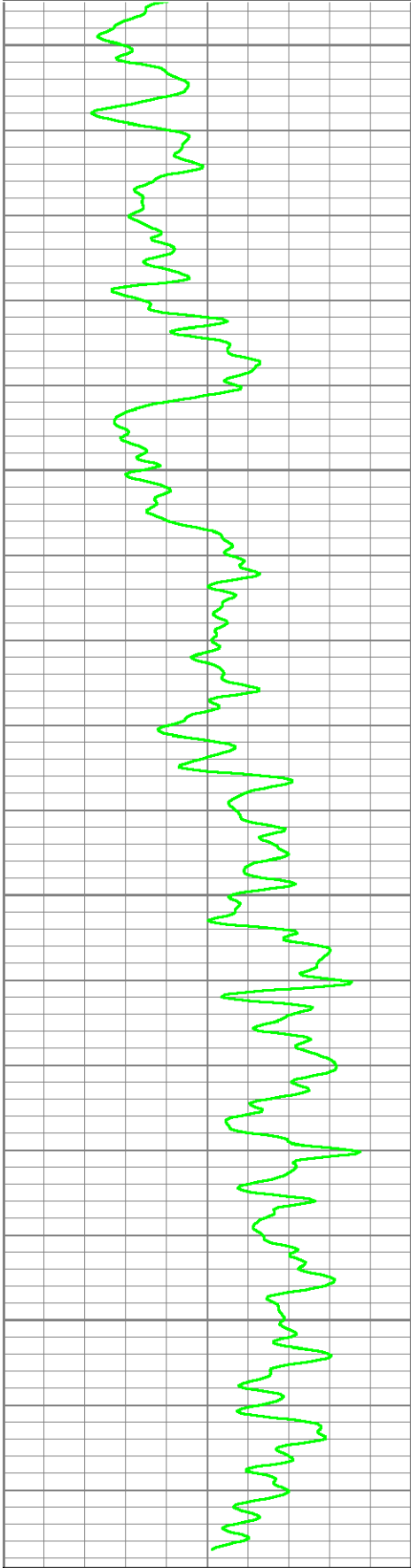
Database File laron_schoepf_#2-15_swd.db
 Dataset Pathname GRCCCL/pass2
 Presentation Format PINR_G~1
 Dataset Creation Mon Mar 26 10:17:03 2018
 Charted by Depth in Feet scaled 1:240



0 GR 150

300 Inverted GR 0 -9

2000 Line Tension (lb) 0
0 LSPD (ft/min) 100



0 GR 150

300 Inverted GR 0 -9

2000 Line Tension (lb) 0
0 LSPD (ft/min) 100

Calibration Report

Database File laron_schoepf_#2-15_sw.d.db
Dataset Pathname GRCCCL/pass3.1
Dataset Creation Mon Mar 26 10:49:01 2018

Gamma Ray Calibration Report

Serial Number:	111032	
Tool Model:	2 3/4" Probe	
Performed:	Tue Sep 05 13:35:03 2017	
Calibrator Value:	1.0	
Background Reading:	0.0	cps
Calibrator Reading:	1.0	cps
Sensitivity:	1.0010	/cps



PIONEER

Pioneer Energy Services

Company	LARSON ENGINEERING LLC
Well	SCHOEPP #2-15 SWD
Field	N/A
County	LANE
State	KANSAS