



**MICRO
RESISTIVITY
LOG**

Company: Habit Petroleum, LLC.
Well: Leiker #3
Field: Deganhert Southeast
County: Ellis
State: Kansas

Company: Habit Petroleum, LLC.
Well: Leiker #3
Field: Deganhert Southeast
County: Ellis
State: Kansas

Location: 600' FNL & 400' FEL
API #: 15 051 26890
SEC 23 TWP 15S RGE 17W
Permanent Datum: Ground Level
Log Measured From: KB 5' AGL
Drilling Measured From: KB
Elevation: 1968'
Other Services: CDNL DIL
Elevation: K.B. 1973', D.F. 1972', G.L. 1968'

Date	10-23-17
Run Number	Two
Depth Driller	3630'
Depth Logger	3631'
Bottom Logged Interval	3629'
Top Log Interval	2900'
Casing Driller	8 5/8" @ 218'
Casing Logger	218'
Bit Size	7 7/8"
Type Fluid in Hole	Chemical
Density / Viscosity	9.8/48
PH / Fluid Loss	10.0/10.4
Source of Sample	Pit
Rm @ Meas. Temp	0.20@70degf
Rmf @ Meas. Temp	0.16@70degf
Rmc @ Meas. Temp	0.26@70degf
Source of Rmf / Rmc	Calculated
Rm @ BHT	0.11@122degf
Time Circulation Stopped	10:15 a.m.
Time Logger on Bottom	2:00 p.m.
Maximum Recorded Temperature	122degf
Equipment Number	T729
Location	Hays, KS
Recorded By	Casey Patterson
Witnessed By	Mr. Jerry Green

<<< Fold Here >>>

All interpretations are opinions based on inferences from electrical or other measurements and we cannot and do not guarantee the accuracy or correctness of any interpretation, and we shall not, except in the case of gross or willful negligence on our part, be liable or responsible for any loss, costs, damages, or expenses incurred or sustained by anyone resulting from any interpretation made by any of our officers, agents or employees. These interpretations are also subject to our general terms and conditions set out in our current Price Schedule.

Comments

Hays old 40 to Munjor Rd., Then South on munjor Rd. to Chetolah Gold Rd.,(or black top Ends)
Then East 5 mi on Chetolah Gold Rd., South into Location

Thanks for using Gemini Wireline LLC
785-625-1182

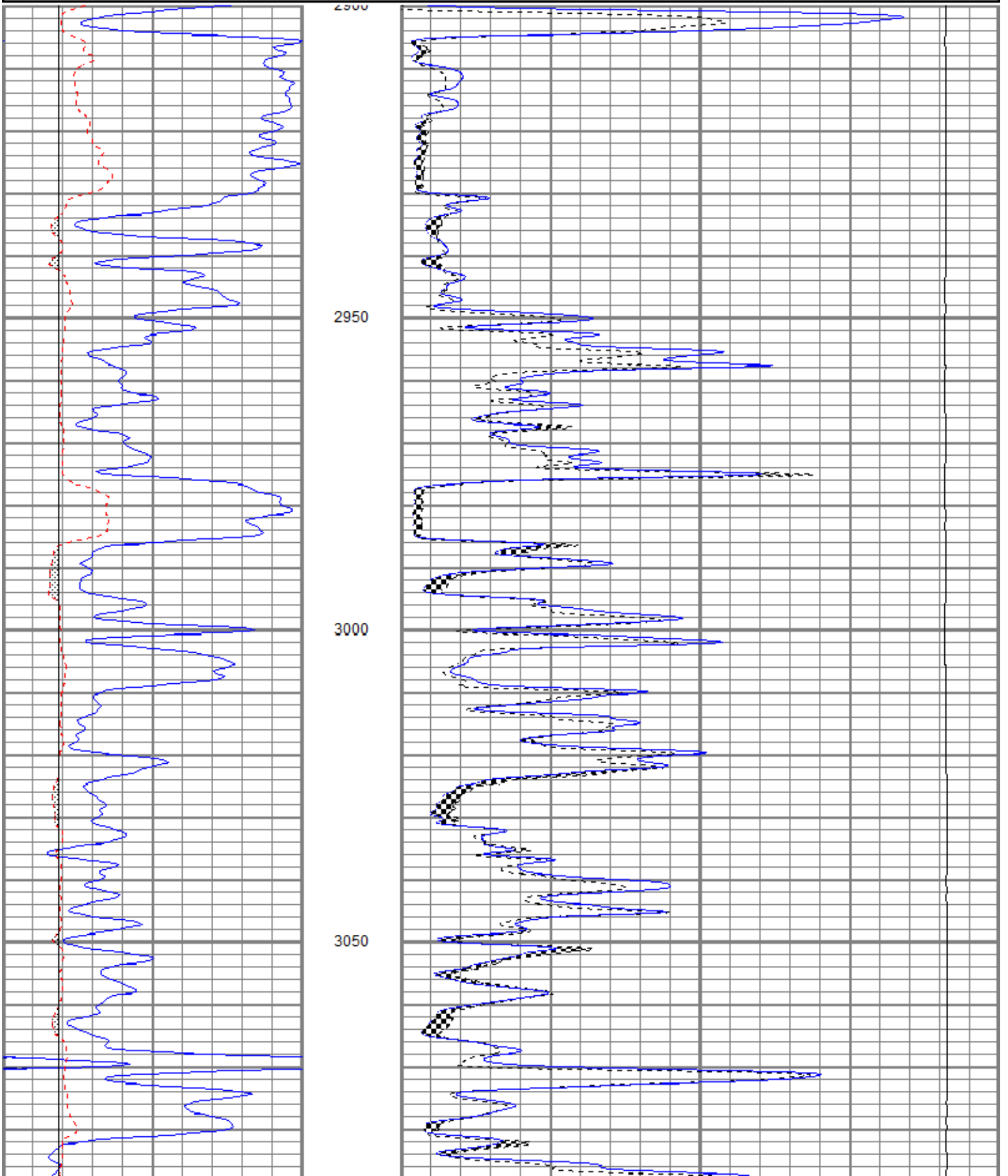


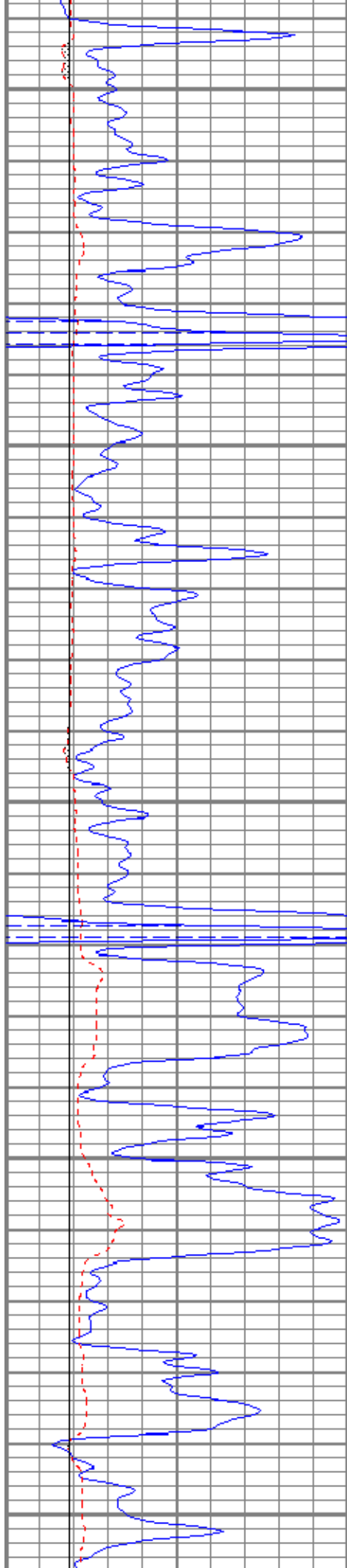
MAIN PASS

Database File hpleiker3oh.db
 Dataset Pathname pass6
 Presentation Format kml
 Dataset Creation Mon Oct 23 16:23:55 2017
 Charted by Depth in Feet scaled 1:240

0	GR (GAPI)	150
6	MCAL (in)	16
6	BOREID (in)	16

0	MN 2" (Ohm-m)	20
0	MI 1" (Ohm-m)	20
10000	LTEN (lb)	0





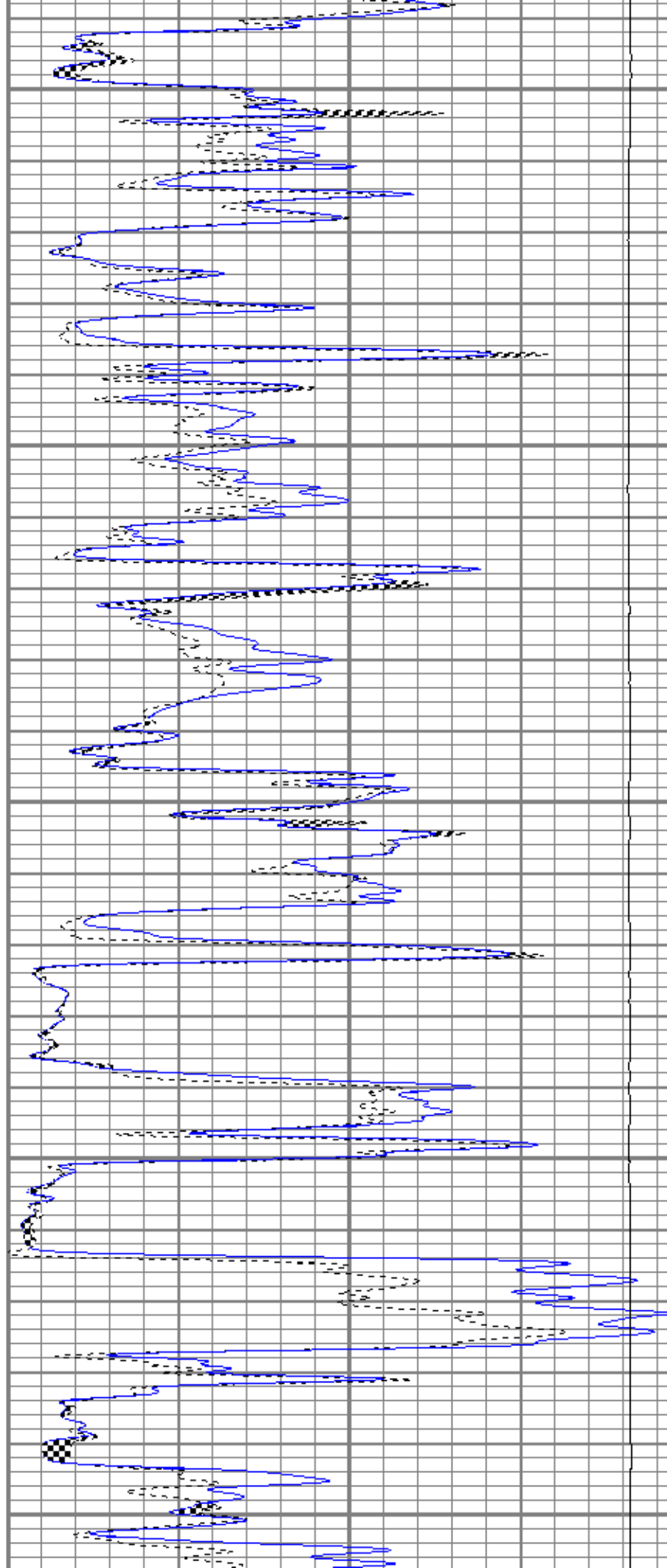
3100

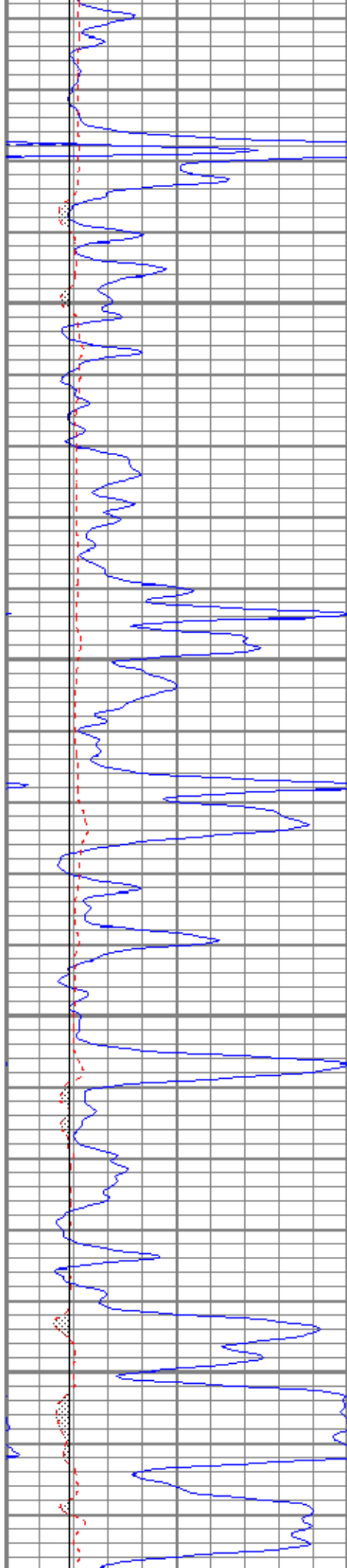
3150

3200

3250

3300



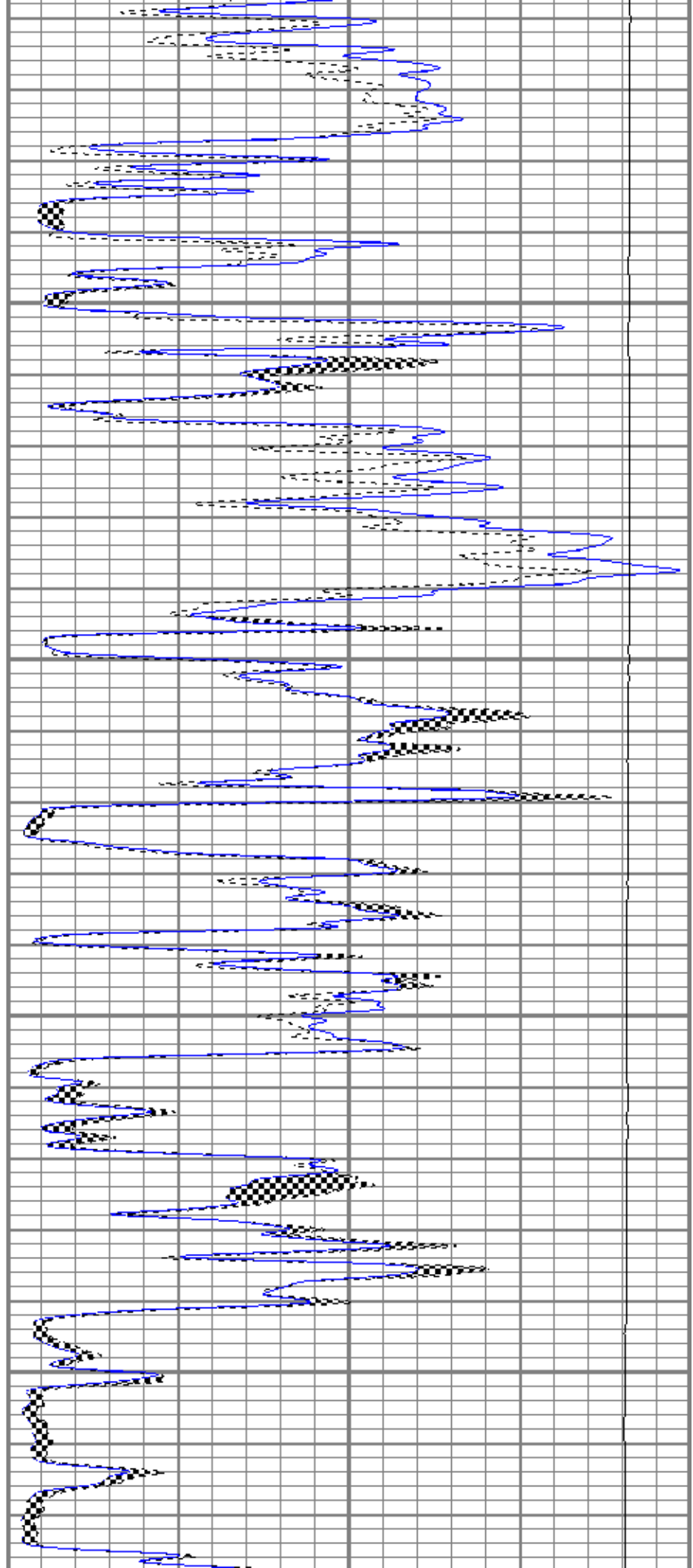


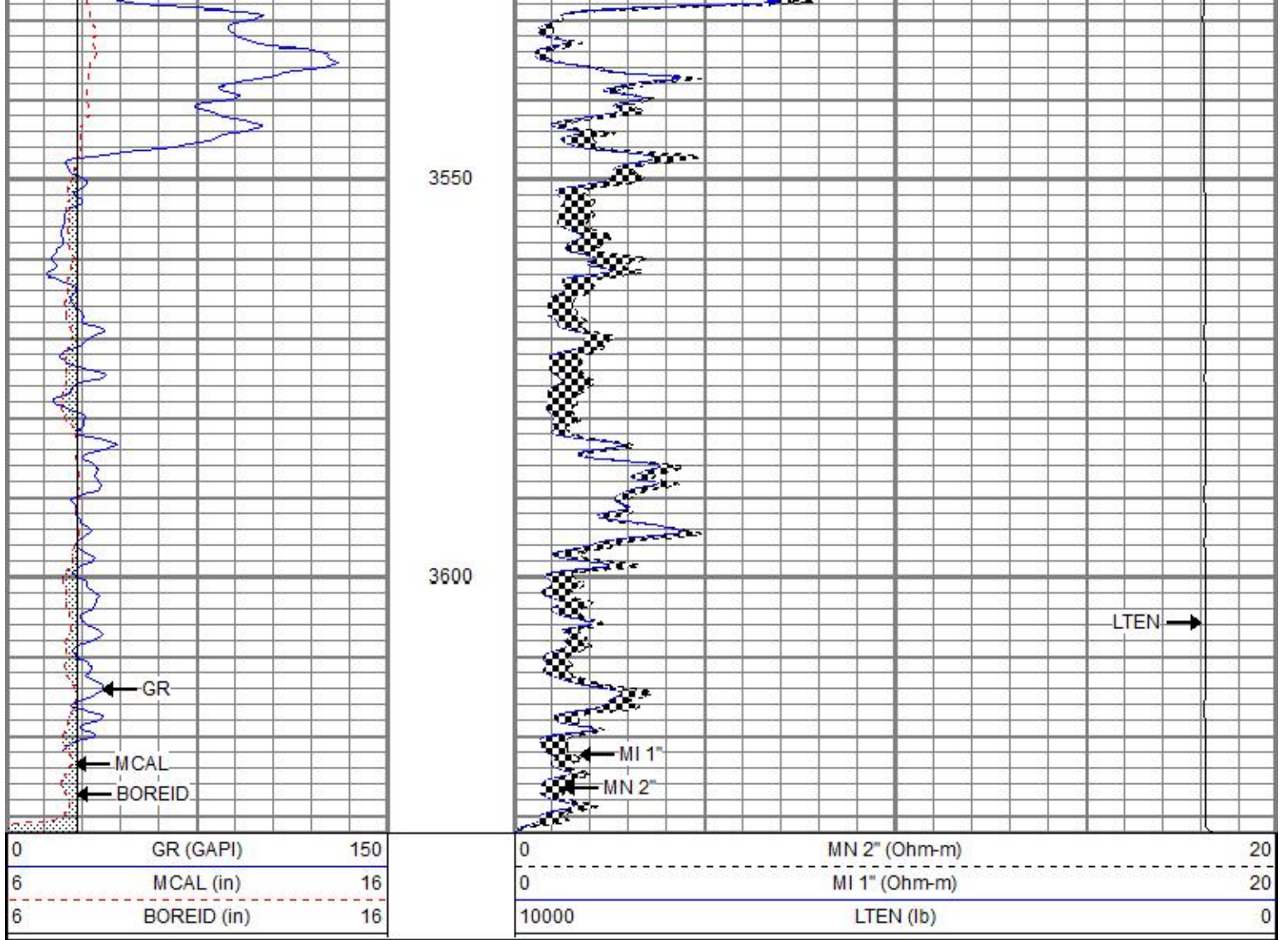
3350

3400

3450

3500

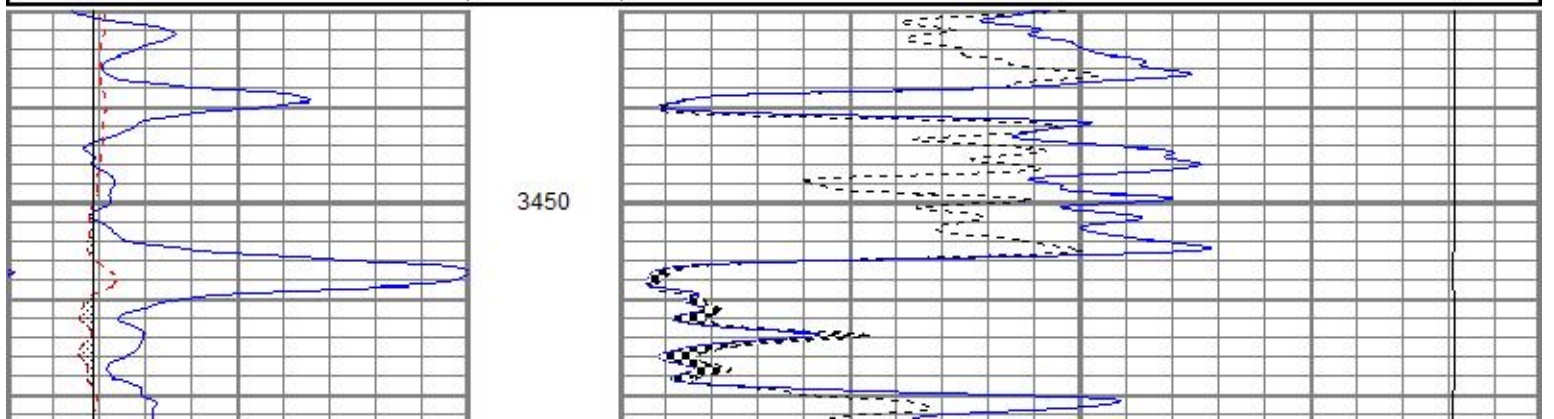


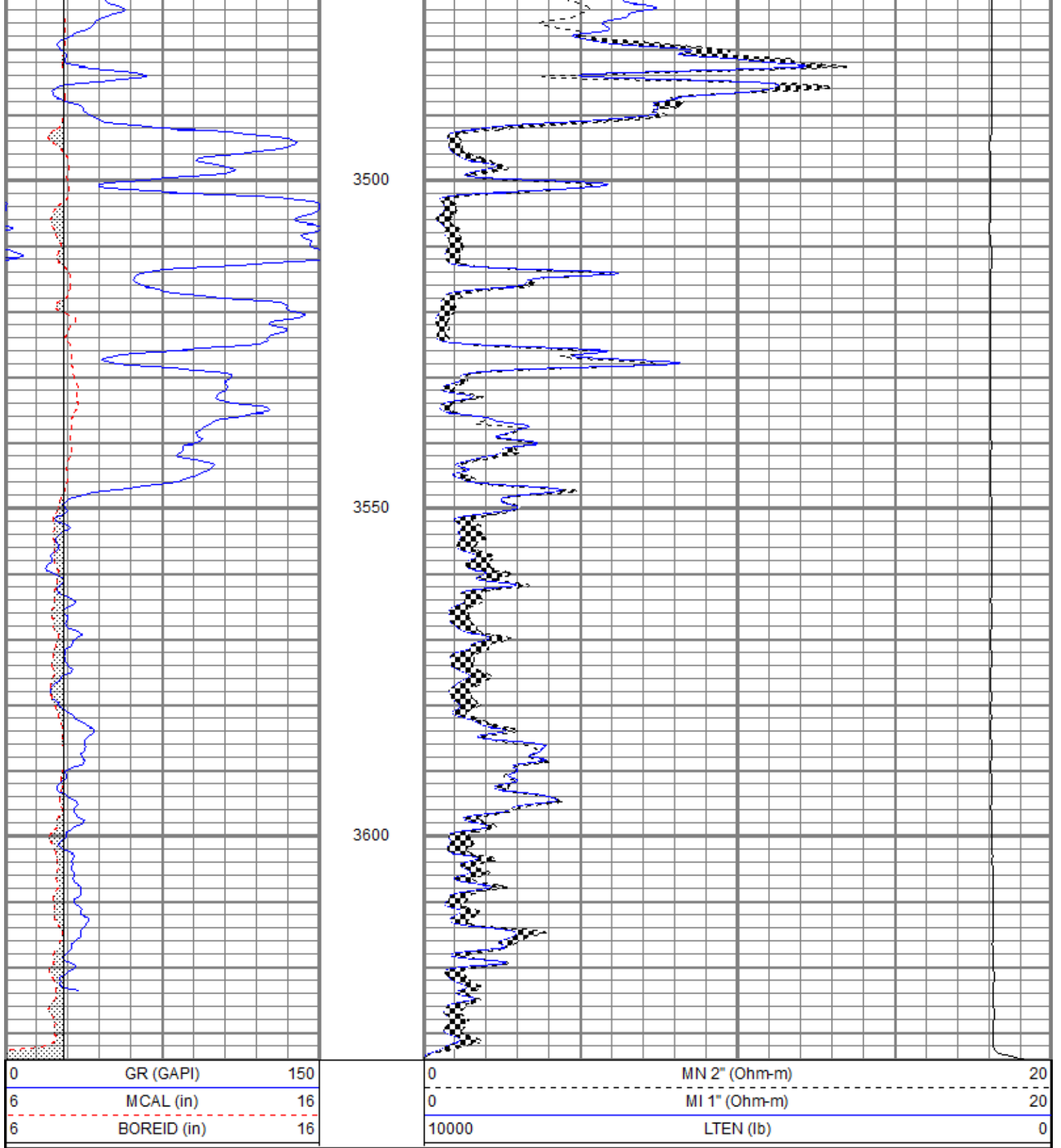


REPEAT SECTION

Database File hpleiker3oh.db
 Dataset Pathname pass5
 Presentation Format kml
 Dataset Creation Mon Oct 23 16:13:54 2017
 Charted by Depth in Feet scaled 1:240

0	GR (GAPI)	150	0	MN 2" (Ohm-m)	20
6	MCAL (in)	16	0	MI 1" (Ohm-m)	20
6	BOREID (in)	16	10000	LTEN (lb)	0





Calibration Report

Database File hpleiker3oh.db
 Dataset Pathname pass6
 Dataset Creation Mon Oct 23 16:23:55 2017

Microlog Calibration Report

Serial-Model: 1600-Pengo
 Performed: Mon Oct 23 14:12:06 2017

Readings

References

Results

	Zero	Cal		Zero	Cal		m	o
Normal	-0.0029	0.5944	V	0.0000	10.0000	Ohm-m	16.7415	0.0493
Inverse	-0.0028	0.7723	V	0.0000	8.2000	Ohm-m	10.5800	0.0293
Caliper	1.0301	2.2816	V	6.4000	10.0000	in	2.8767	3.4367

Gamma Ray Calibration Report

Serial Number: 2001
 Tool Model: OH
 Performed: Thu Aug 03 06:10:54 2017

 Calibrator Value: 1.0 GAPI

 Background Reading: 0.0 cps
 Calibrator Reading: 1.0 cps

 Sensitivity: 0.8000 GAPI/cps

Sensor	Offset (ft)	Schematic	Description	Length (ft)	O.D. (in)	Weight (lb)
GR	8.13		CHD-None	0.75	1.50	5.00
MCAL	1.30		GR-OH (2001)	3.56	3.25	40.00
MI	1.30		2001			
MN	1.30		ML-Pengo (1600)	6.97	3.50	100.00

Dataset: hpleiker3oh.db: field/well/run1/pass6
 Total length: 11.28 ft
 Total weight: 145.00 lb
 O.D.: 3.50 in