



**COMPENSATED DENSITY
NEUTRON
LOG**

Company	Habit Petroleum, LLC.		
Well	Leiker #3		
Field	Deganhert Southeast		
County	Ellis		
State	Kansas		
Company	Habit Petroleum, LLC.	Location:	API #: 15 051 26890
Well	Leiker #3		600' FNL & 400' FEL
Field	Deganhert Southeast		
County	Ellis	State	Kansas
Permanent Datum	SEC 23 TWP 15S RGE 17W	Ground Level	Elevation 1968'
Log Measured From	KB 5' AGL		
Drilling Measured From	KB		
		Other Services	DIL ML
		Elevation	K.B. 1973' D.F. 1972' G.L. 1968'

Date	10-23-17
Run Number	One
Depth Driller	3630'
Depth Logger	3631'
Bottom Logged Interval	3609'
Top Log Interval	2900'
Casing Driller	8 5/8" @ 218'
Casing Logger	218'
Bit Size	7 7/8"
Type Fluid in Hole	Chemical
Density / Viscosity	9.8/48
PH / Fluid Loss	10.0/10.4
Source of Sample	Pit
Rm @ Meas. Temp	0.20@70degf
Rmf @ Meas. Temp	0.16@70degf
Rmc @ Meas. Temp	0.26@70degf
Source of Rmf / Rmc	Calculated
Rm @ BHT	0.11@122degf
Time Circulation Stopped	10:15 a.m.
Time Logger on Bottom	12:00 p.m
Maximum Recorded Temperature	122degf
Equipment Number	T729
Location	Hays, KS
Recorded By	Casey Patterson
Witnessed By	Mr. Jerry Green

<<< Fold Here >>>

All interpretations are opinions based on inferences from electrical or other measurements and we cannot and do not guarantee the accuracy or correctness of any interpretation, and we shall not, except in the case of gross or willful negligence on our part, be liable or responsible for any loss, costs, damages, or expenses incurred or sustained by anyone resulting from any interpretation made by any of our officers, agents or employees. These interpretations are also subject to our general terms and conditions set out in our current Price Schedule.

Comments

Hays old 40 to Munjor Rd., Then South on munjor Rd. to Chetolah Gold Rd.,(or black top Ends)
Then East 5 mi on Chetolah Gold Rd., South into Location

Thanks for using Gemini Wireline LLC
785-625-1182



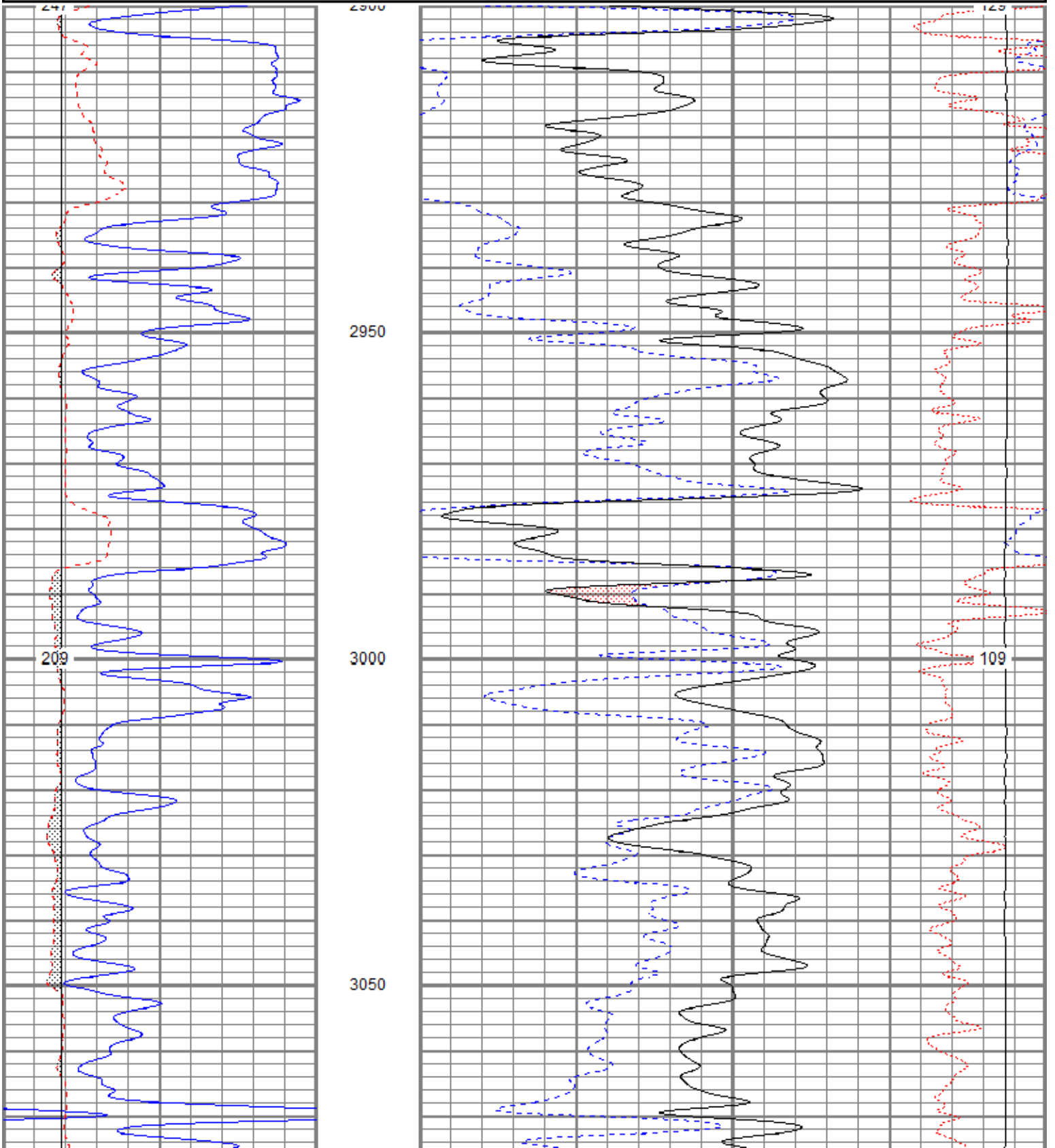
MAIN PASS

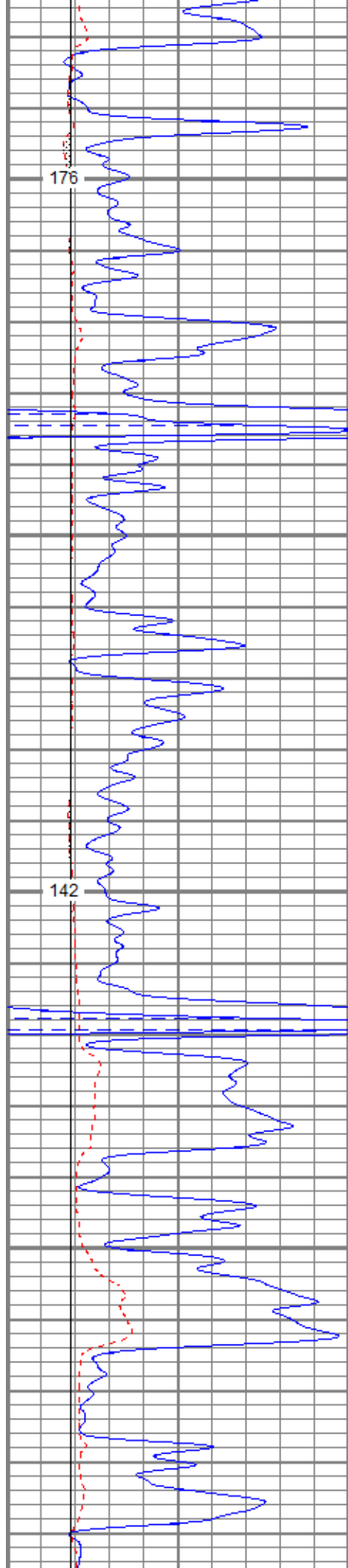
Database File hpleiker30n.db
 Dataset Pathname pass4.1
 Presentation Format kcdnl
 Dataset Creation Mon Oct 23 15:38:38 2017
 Charted by Depth in Feet scaled 1:240

0	GR (GAPI)	150
6	DCAL (in)	16
6	BOREID (in)	16

30	NPOR (pu)	-10
30	DPOR (pu)	-10
70	DPOR (pu)	30

TBHV (ft3)	-0.25	RHOC (g/cc)	0.25
	10000	LTEN (lb)	0
		ABHV (ft3)	



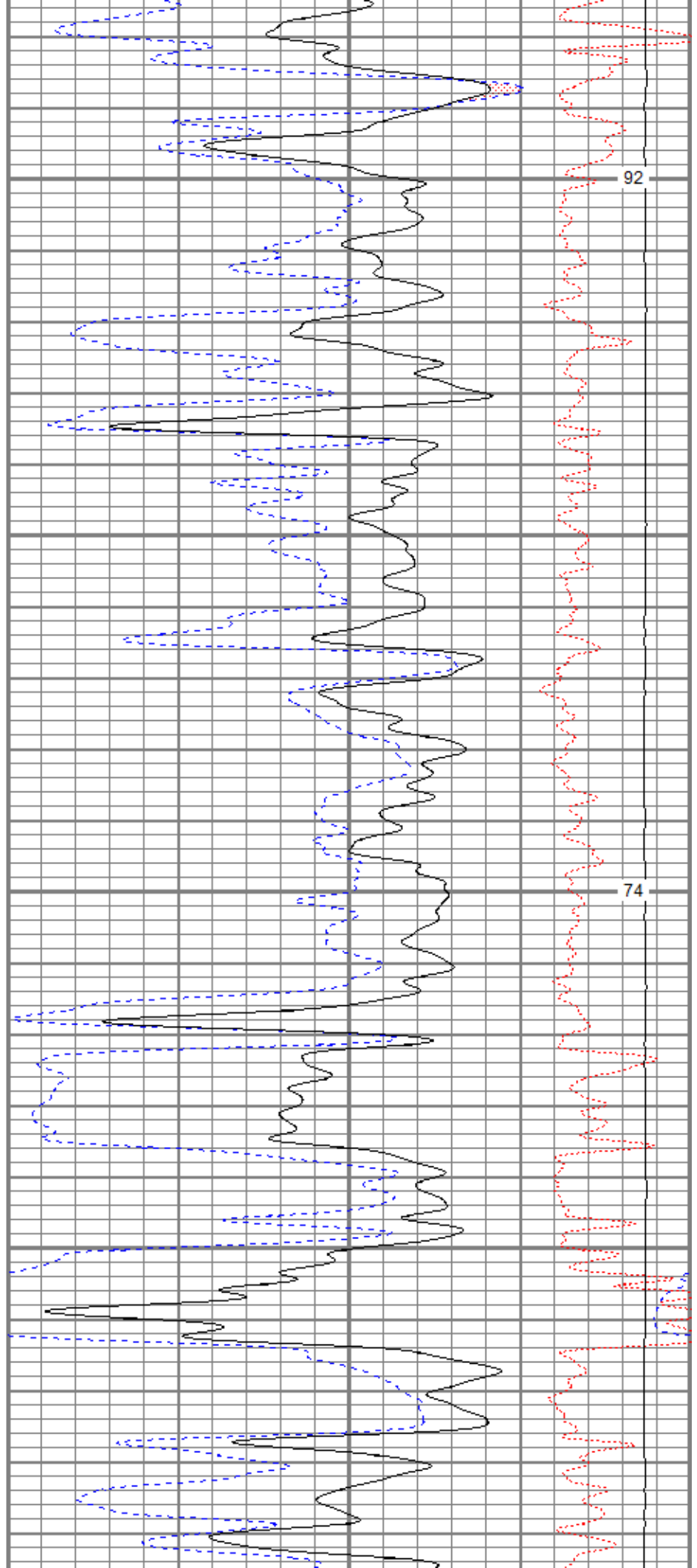


3100

3150

3200

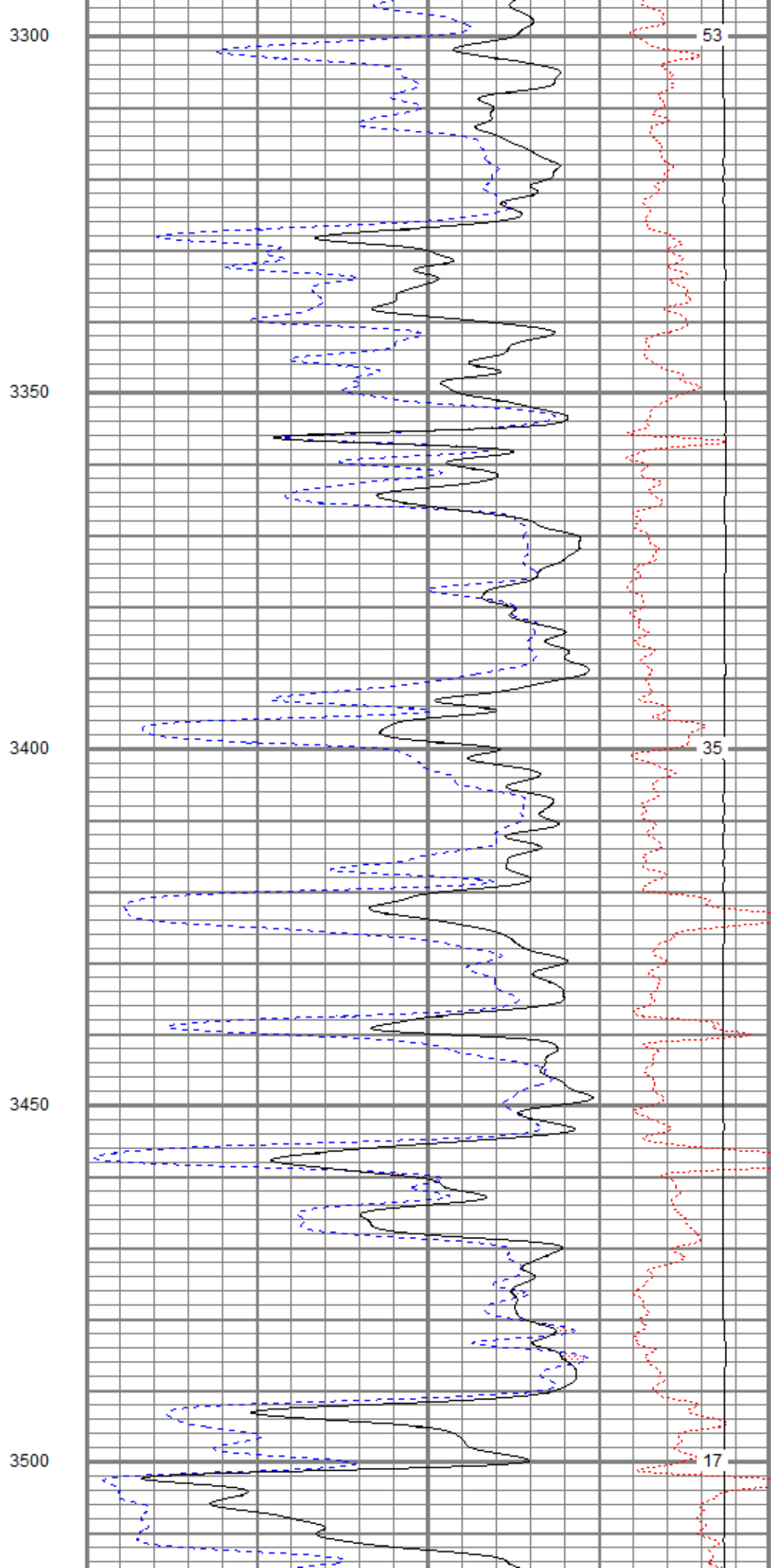
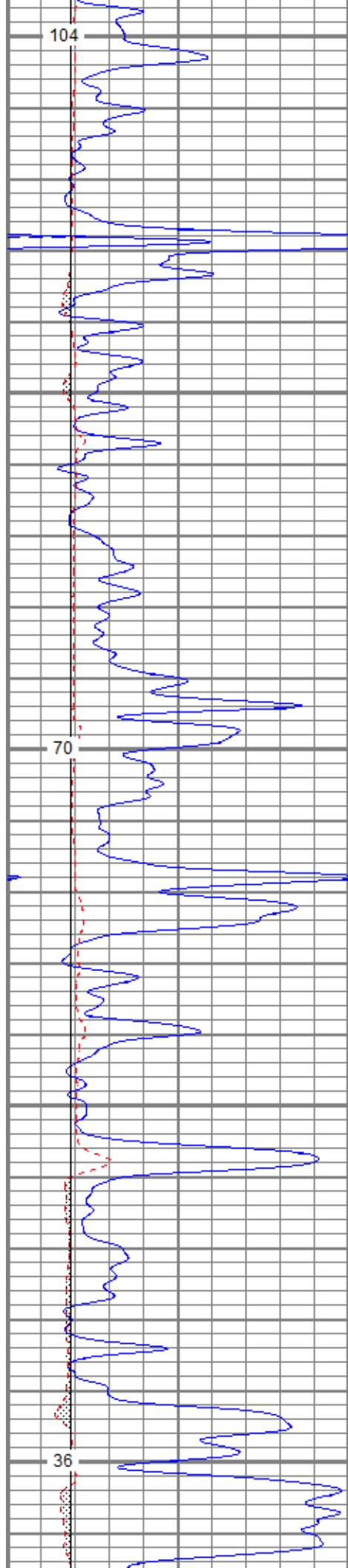
3250

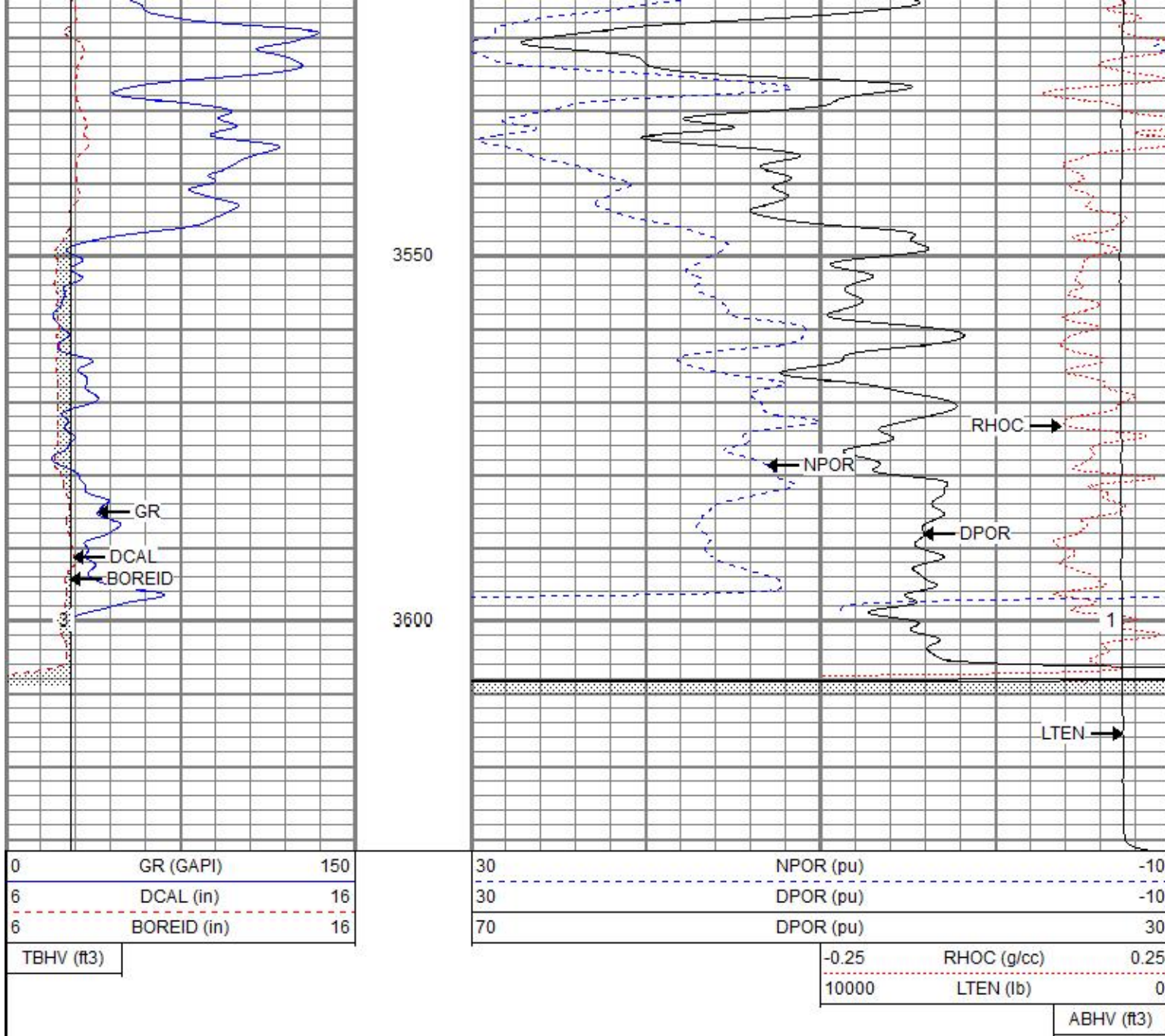


92

74

74

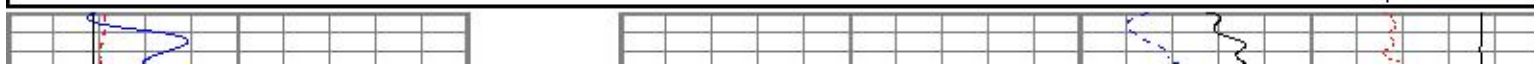


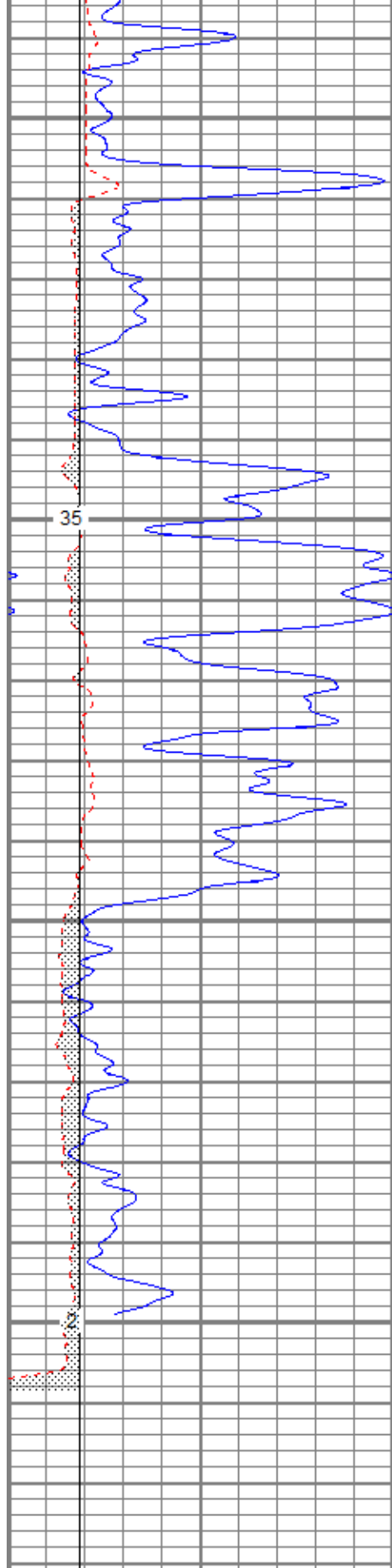


REPEAT SECTION

Database File hpleiker3oh.db
 Dataset Pathname pass2.1
 Presentation Format kcdnl
 Dataset Creation Mon Oct 23 14:46:34 2017
 Charted by Depth in Feet scaled 1:240

0	GR (GAPI)	150	30	NPOR (pu)	-10
6	DCAL (in)	16	30	DPOR (pu)	-10
6	BOREID (in)	16	70	DPOR (pu)	30
TBHV (ft3)			-0.25 RHOC (g/cc) 0.25		
			10000 LTEN (lb) 0		
			ABHV (ft3)		



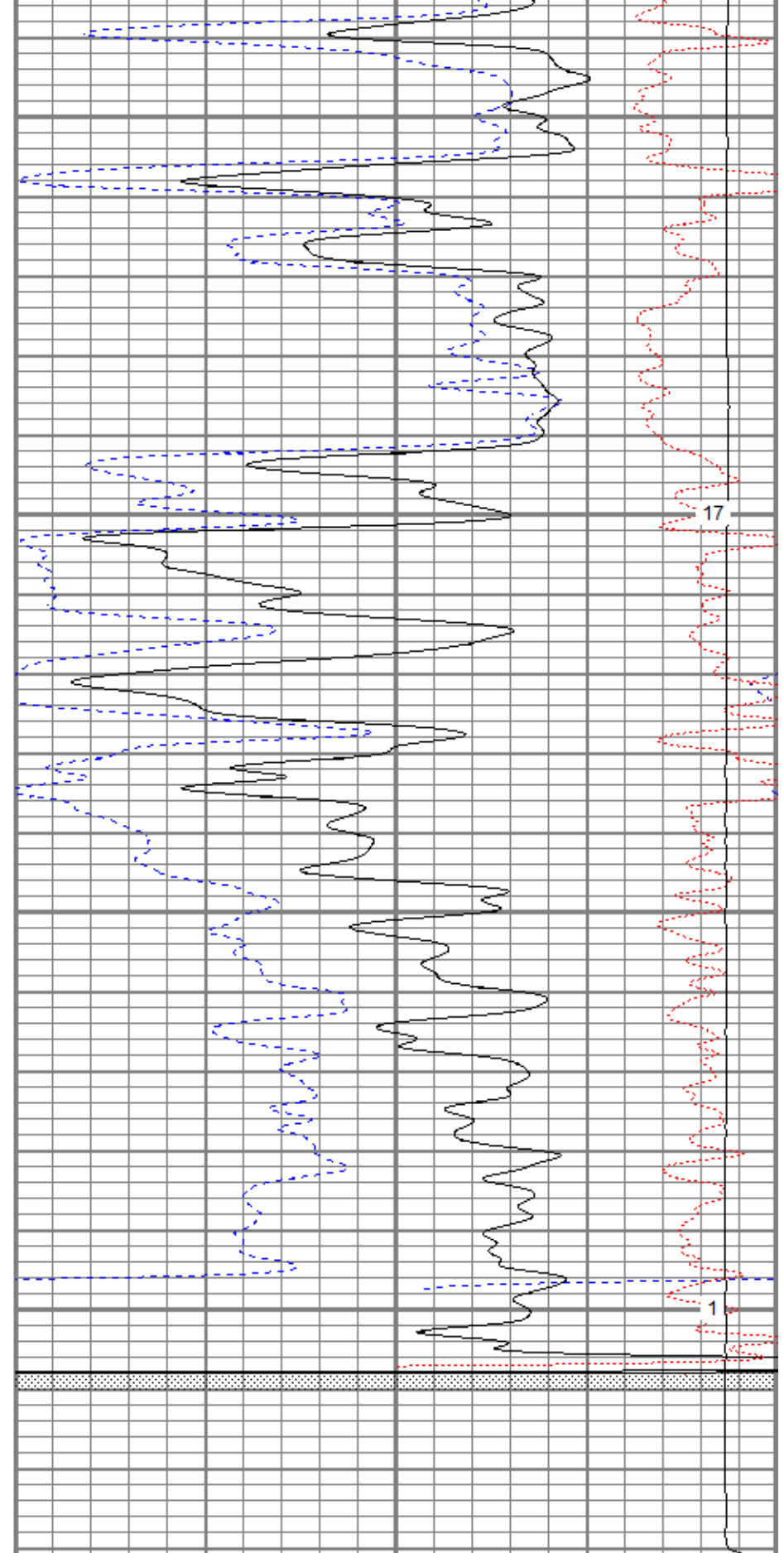


3450

3500

3550

3600



17

1

0	GR (GAPI)	150
6	DCAL (in)	16
6	BOREID (in)	16

30	NPOR (pu)	-10
30	DPOR (pu)	-10
70	DPOR (pu)	30

TBHV (ft3)

-0.25	RHOC (g/cc)	0.25
10000	LTEN (lb)	0

ABHV (ft3)

Calibration Report

Database File hpleiker3oh.db
 Dataset Pathname pass4.1
 Dataset Creation Mon Oct 23 15:38:38 2017

Dual Induction Calibration Report

Serial-Model: 5375-G
 Surface Cal Performed: Tue Aug 15 10:21:23 2017
 Downhole Cal Performed: Tue Aug 15 10:22:14 2017
 After Survey Verification Performed: Tue Aug 15 10:22:14 2017

Surface Calibration

Loop:	Readings			References			Results	
	Air	Loop		Air	Loop		m	b
Deep	-0.003	0.635	V	0.000	350.000	mmho/m	548.445	1.715
Medium	-0.001	0.717	V	0.000	400.000	mmho/m	556.583	0.684
Internal:	Zero	Cal		Zero	Cal		m	b
Deep	-0.003	0.635	V	0.000	350.000	mmho/m	548.268	1.663
Medium	-0.001	0.718	V	0.000	400.000	mmho/m	556.234	0.694

Downhole Calibration

Internal:	Readings			References			Results	
	Zero	Cal		Zero	Cal		m	b
Deep	0.131	349.928	mmho/m	0.052	350.165	mmho/m	1.001	-0.079
Medium	-0.084	400.178	mmho/m	-0.010	400.241	mmho/m	1.000	0.073
Shallow	2.425	0.005	V	500.000	2.000	Ohm-m	205.838	0.894

After Survey Verification

Internal:	Readings			Targets			Results	
	Zero	Cal		Zero	Cal		m'	b'
Deep	0.000	0.000	mmho/m	0.131	349.928	mmho/m	1.001	-0.079
Medium	0.000	0.000	mmho/m	-0.084	400.178	mmho/m	1.000	0.073
Shallow	0.000	0.000	Ohm-m	500.000	2.000	Ohm-m	1.000	0.000

Compensated Density Calibration Report

Serial-Model: 2113TN-Aoilex
 Source / Verifier: csv n-20 /
 Master Calibration Performed: Wed Oct 11 14:43:37 2017
 Before Survey Verification Performed:
 After Survey Verification Performed:

Master Calibration

	Density		Far Detector	Near Detector	
Magnesium	1.750	g/cc	466.46	301.08	cps
Aluminum	2.690	g/cc	85.94	195.82	cps
Spine Angle = 75.73			Density/Spine Ratio = 0.539		
	Size		Reading		
Small Ring	9.35	in	1.49	V	
Large Ring	14.00	in	3.25	V	

Before Survey Verification

<u>Target</u>	<u>Measured</u>
g/cc g/cc g/cc	g/cc g/cc g/cc

After Survey Verification

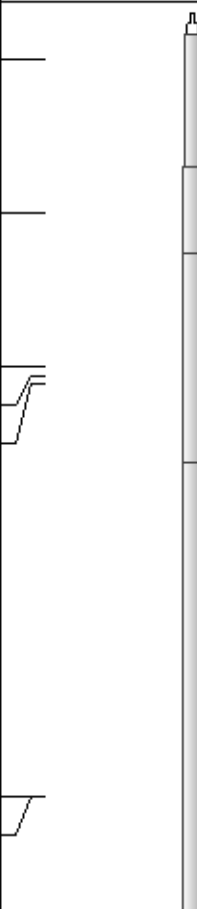
<u>Target</u>	<u>Measured</u>
g/cc g/cc g/cc	g/cc g/cc g/cc

Gamma Ray Calibration Report

Serial Number:	2213TN		
Tool Model:	Aoilex		
Performed:	Wed Oct 11 14:43:45 2017		
Calibrator Value:	1.0	GAPI	
Background Reading:	0.0	cps	
Calibrator Reading:	1.0	cps	
Sensitivity:	1.1000	GAPI/cps	

Neutron Calibration Report

Serial Number:	2301AN		
Tool Model:	Oilex		
Performed:	Wed Oct 11 14:43:43 2017		
Calibrator Value:	1	NAPI	
Calibrator Reading:	1	cps	
Sensitivity:	1	NAPI/cps	

Sensor	Offset (ft)	Schematic	Description	Length (ft)	O.D. (in)	Weight (lb)
NEU	34.62		CHD-None	0.75	1.50	5.00
			NEU-Oilex (2301AN) Oilex 100V NEU	4.27	3.50	80.00
GR	29.60		GR-Aoilex (2213TN) Admyr GR	2.84	4.00	50.00
LSD	24.57		CDL-Aoilex (2113TN) Admyr Oilex	6.80	4.00	250.00
DCAL SSD	24.30 24.05					
SP CILD	10.60 10.60		DIL-G (5375) Gearhart	21.47	4.00	345.00
CILM	6.80					

CILM

0.69

RLL3

1.70

Dataset: hpleiker3oh.db: field/well/run1/pass4.1
Total length: 36.14 ft
Total weight: 730.00 lb
O.D.: 4.00 in