



**DUAL
INDUCTION
LOG**

Company: Habit Petroleum, LLC.
Well: Leiker #3
Field: Deganhert Southeast
County: Ellis
State: Kansas

Company: Habit Petroleum, LLC.
Well: Leiker #3
Field: Deganhert Southeast
County: Ellis
State: Kansas

Location: 600' FNL & 400' FEL
API #: 15 051 26890
SEC 23 TWP 15S RGE 17W
Permanent Datum: Ground Level
Log Measured From: KB 5' AGL
Drilling Measured From: KB
Elevation: 1968'
Other Services: CDNL ML
Elevation: K.B. 1973', D.F. 1972', G.L. 1968'

Date	10-23-17
Run Number	One
Depth Driller	3630'
Depth Logger	3631'
Bottom Logged Interval	3629'
Top Log Interval	210'
Casing Driller	8 5/8" @ 218'
Casing Logger	218'
Bit Size	7 7/8"
Type Fluid in Hole	Chemical
Density / Viscosity	9.8/48
PH / Fluid Loss	10.0/10.4
Source of Sample	Pit
Rm @ Meas. Temp	0.20@70degf
Rmf @ Meas. Temp	0.16@70degf
Rmc @ Meas. Temp	0.26@70degf
Source of Rmf / Rmc	Calculated
Rm @ BHT	0.11@122degf
Time Circulation Stopped	10:15 a.m.
Time Logger on Bottom	12:00 p.m.
Maximum Recorded Temperature	122degf
Equipment Number	T729
Location	Hays, KS
Recorded By	Casey Patterson
Witnessed By	Mr. Jerry Green

<<< Fold Here >>>

All interpretations are opinions based on inferences from electrical or other measurements and we cannot and do not guarantee the accuracy or correctness of any interpretation, and we shall not, except in the case of gross or willful negligence on our part, be liable or responsible for any loss, costs, damages, or expenses incurred or sustained by anyone resulting from any interpretation made by any of our officers, agents or employees. These interpretations are also subject to our general terms and conditions set out in our current Price Schedule.

Comments

Hays old 40 to Munjor Rd., Then South on munjor Rd. to Chetolah Gold Rd.,(or black top Ends)
Then East 5 mi on Chetolah Gold Rd., South into Location

Thanks for using Gemini Wireline LLC
785-625-1182



MAIN PASS

Database File hpleiker3oh.db
 Dataset Pathname pass4.1
 Presentation Format kdillinn
 Dataset Creation Mon Oct 23 15:38:38 2017
 Charted by Depth in Feet scaled 1:600

0 GR (GAPI) 150

1000 CILD (mmho/m) 0

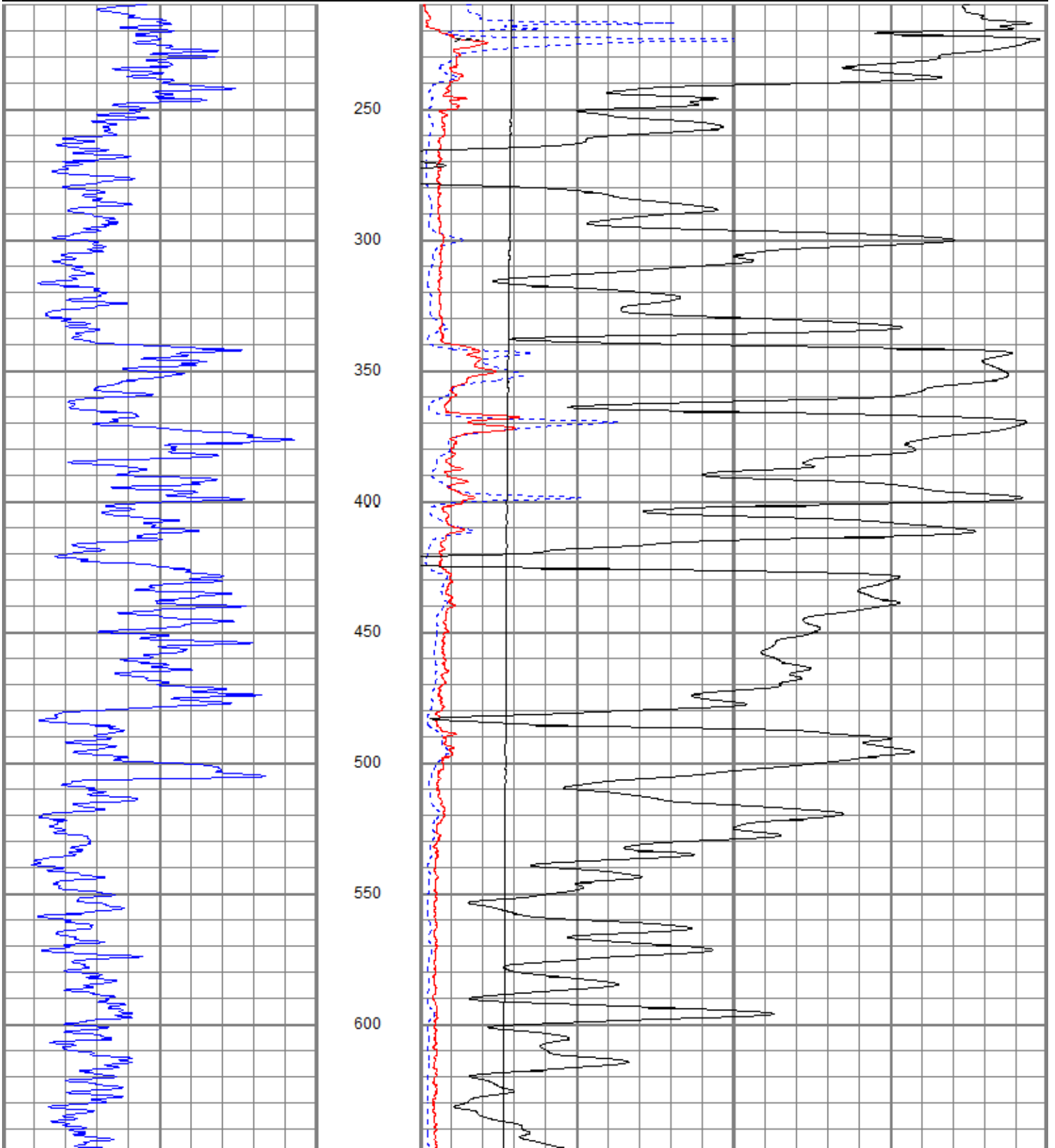
10000 LTEN (lb) 0

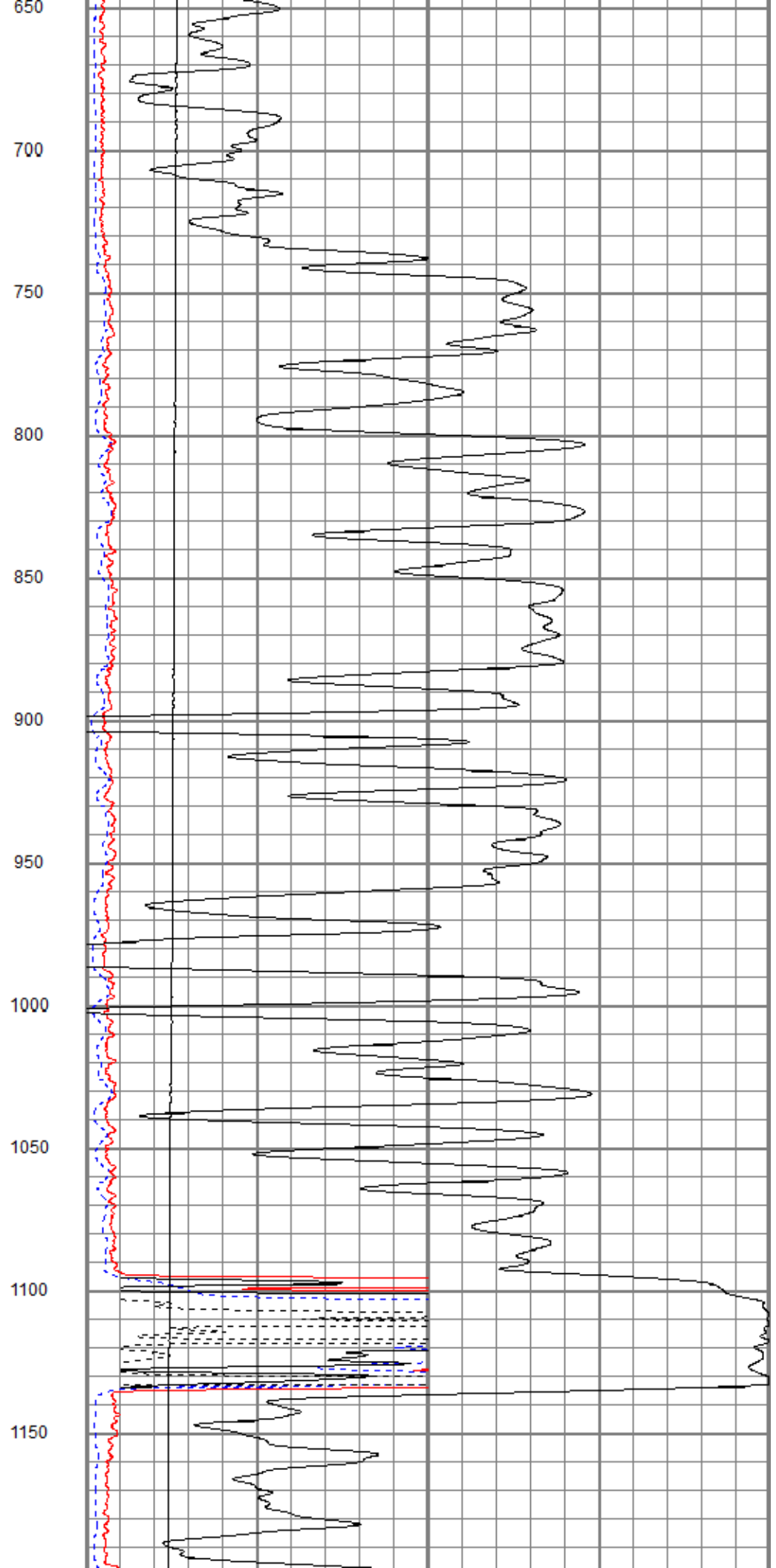
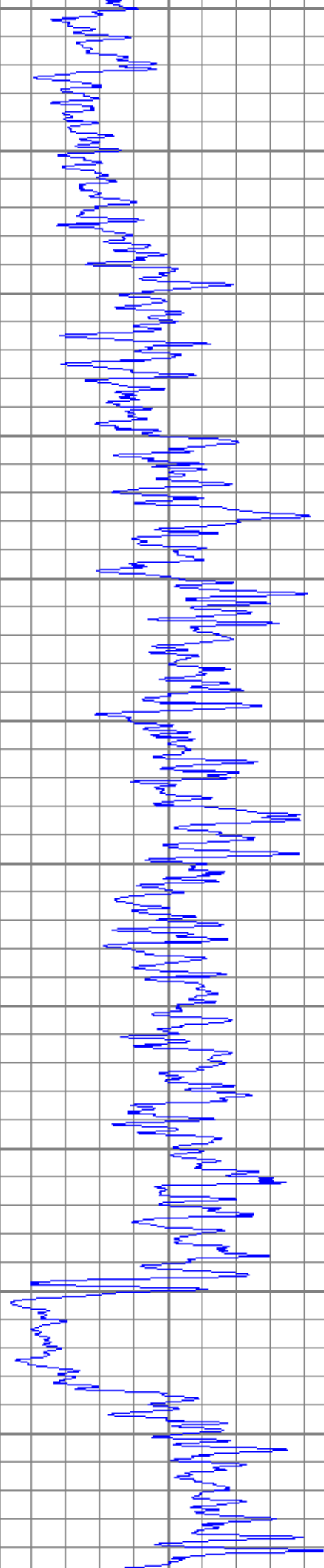
0 RILD (Ohm-m) 50

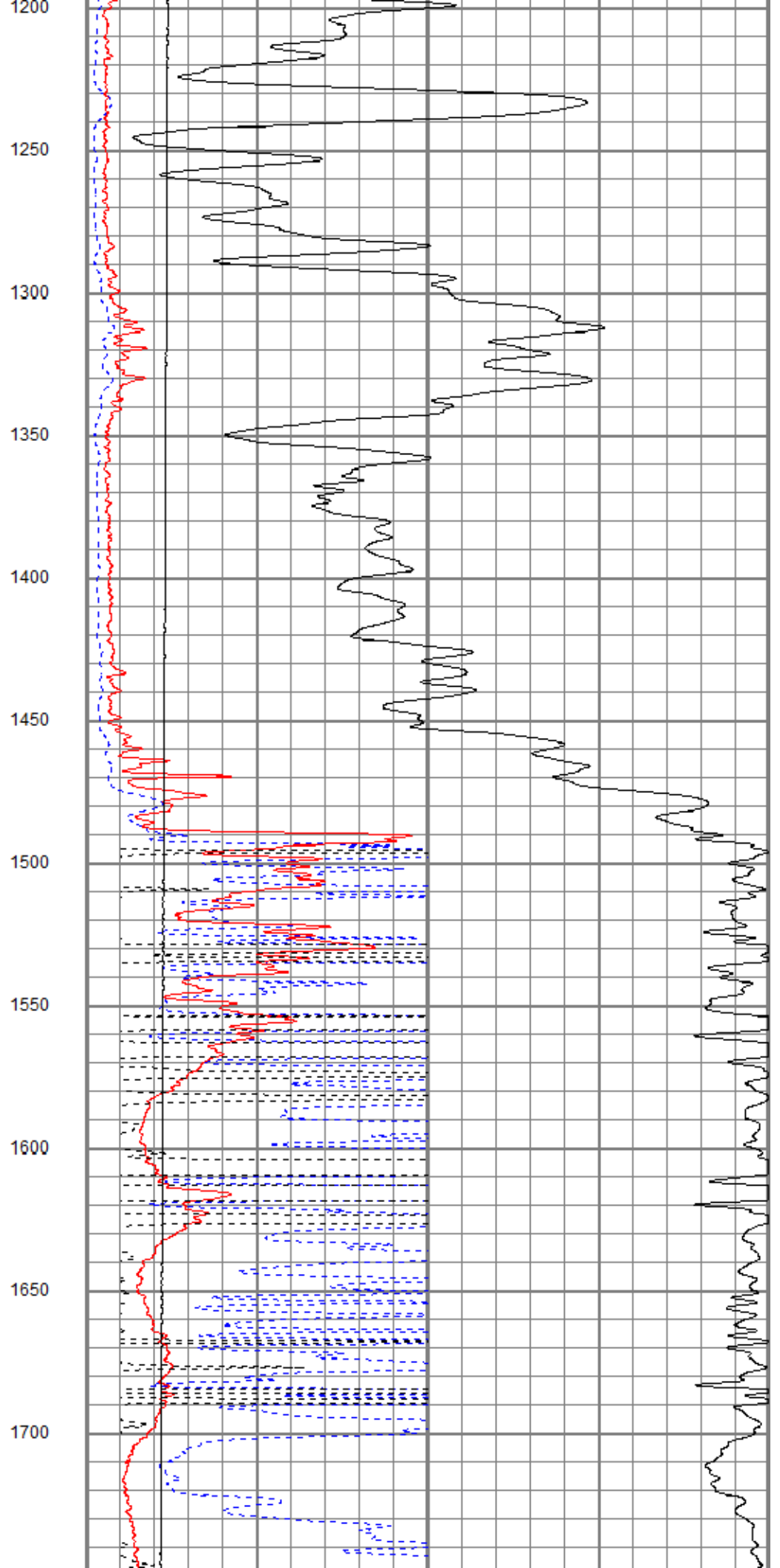
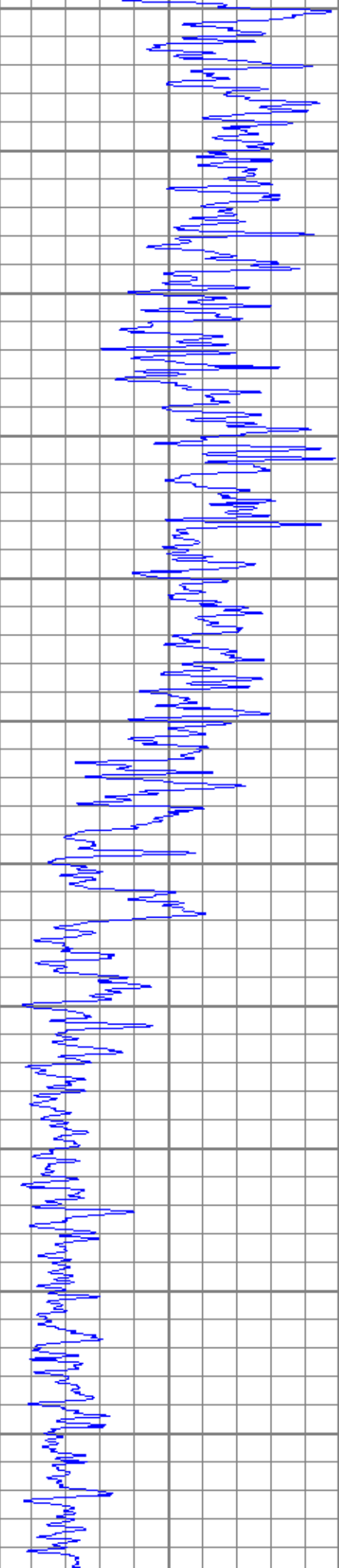
0 RLL3 (Ohm-m) 50

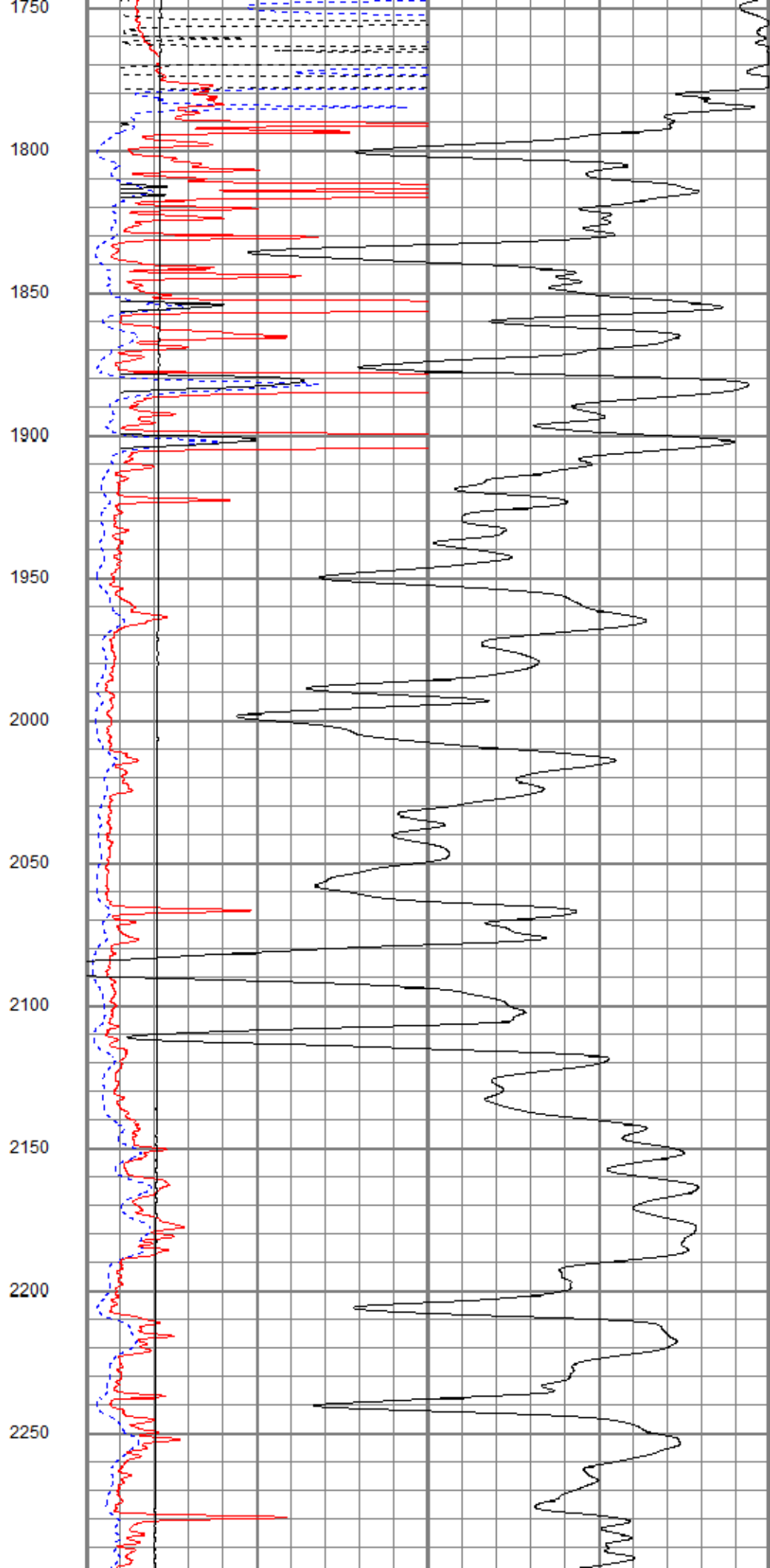
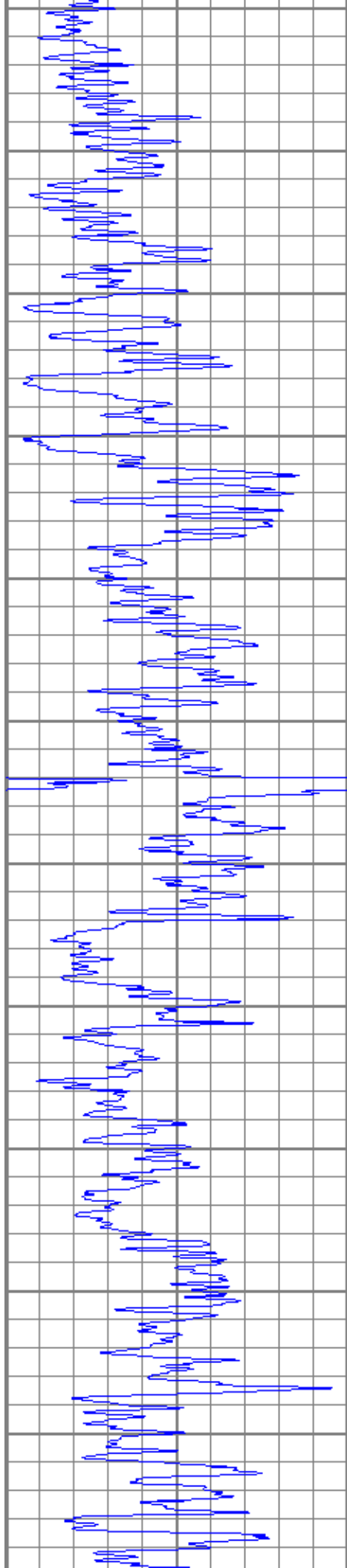
50 RILD x 10 (Ohm-m) 500

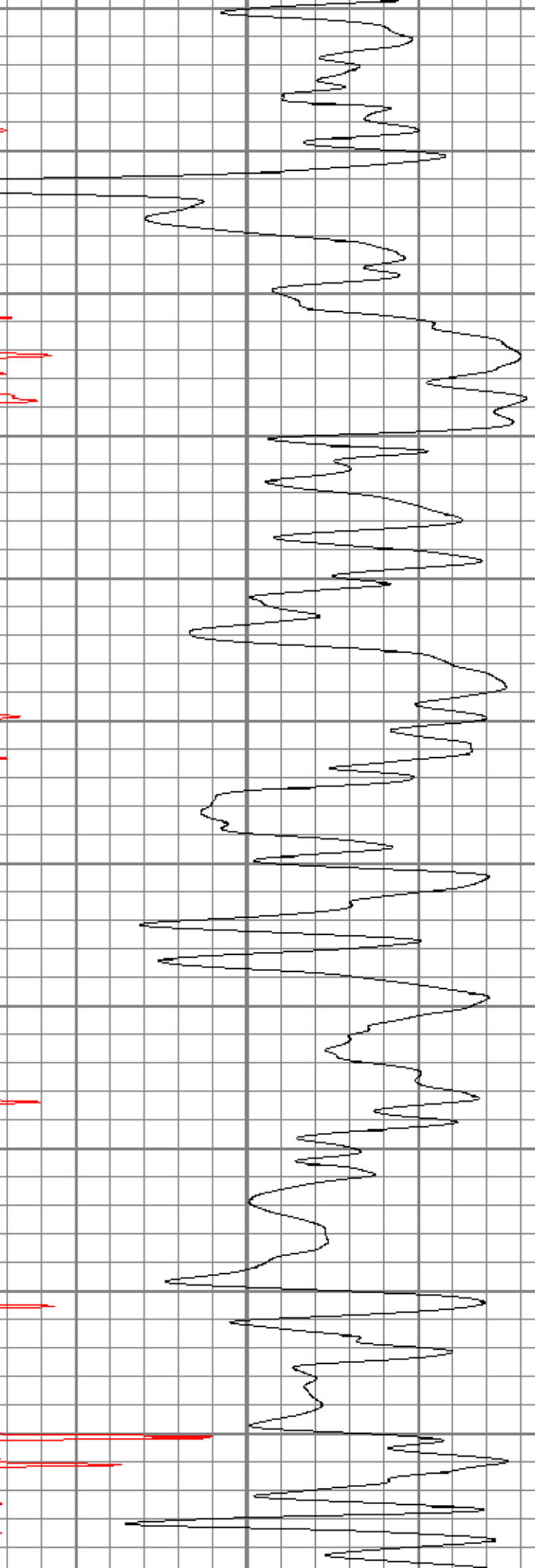
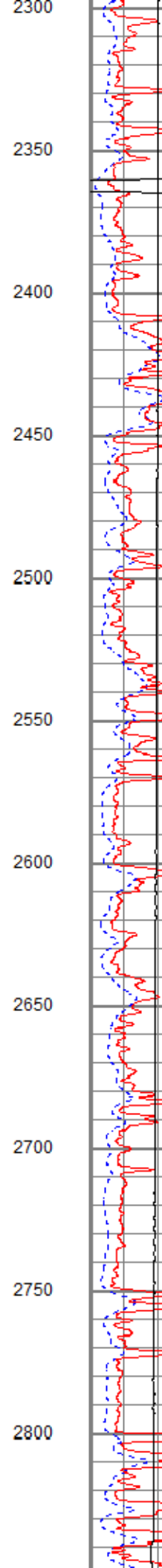
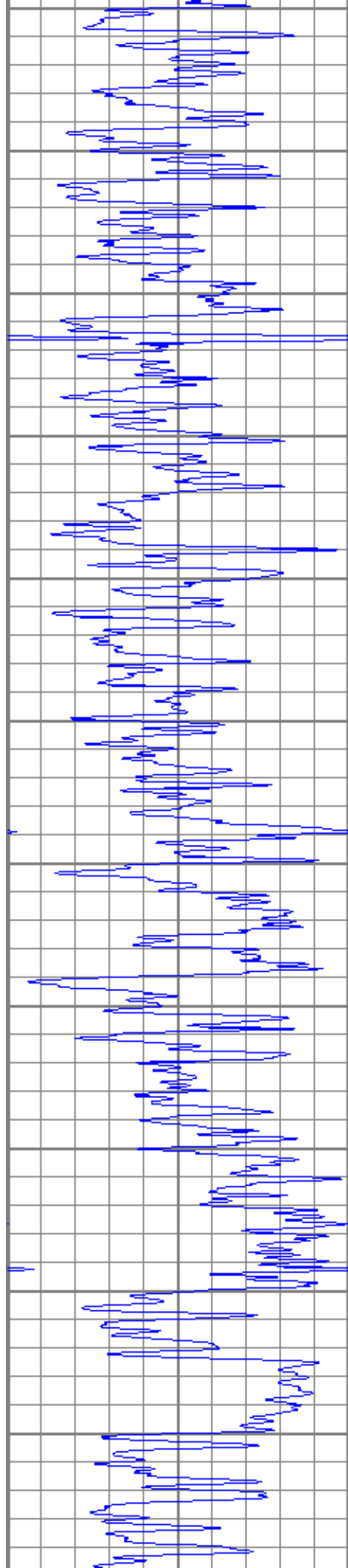
50 RLL3 x 10 (Ohm-m) 500

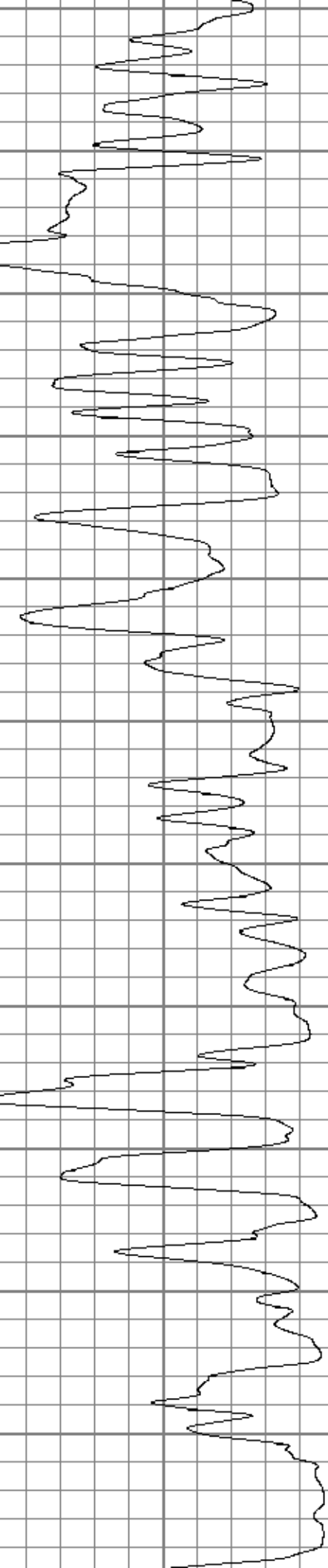
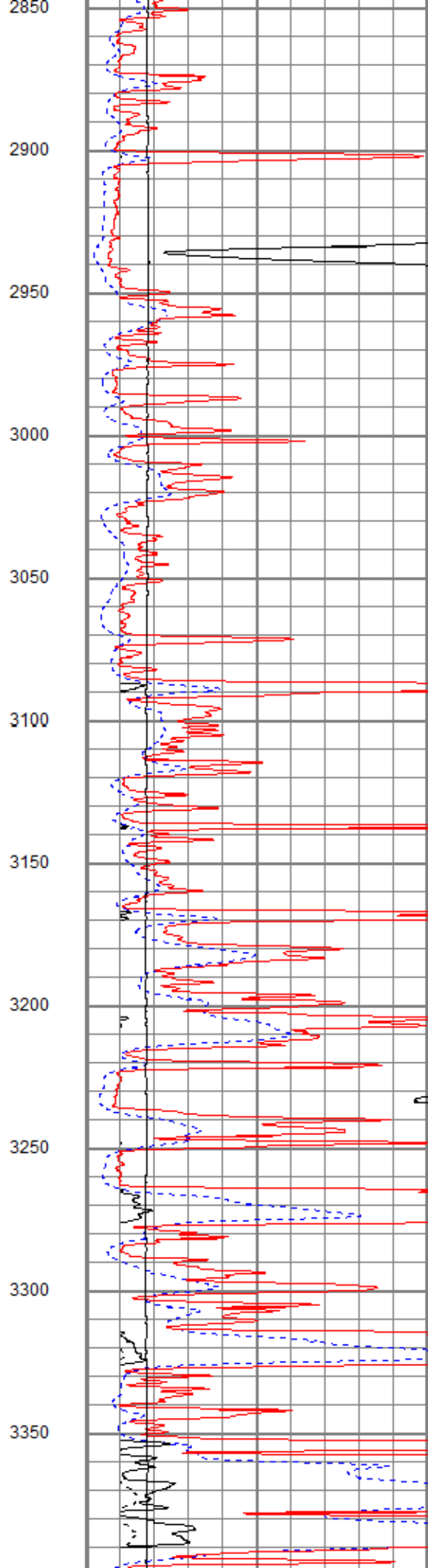
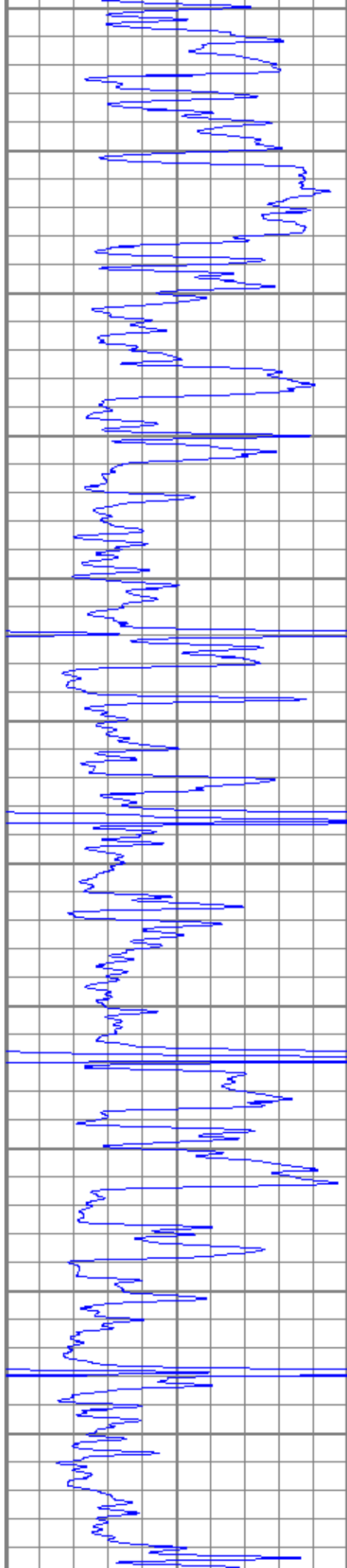


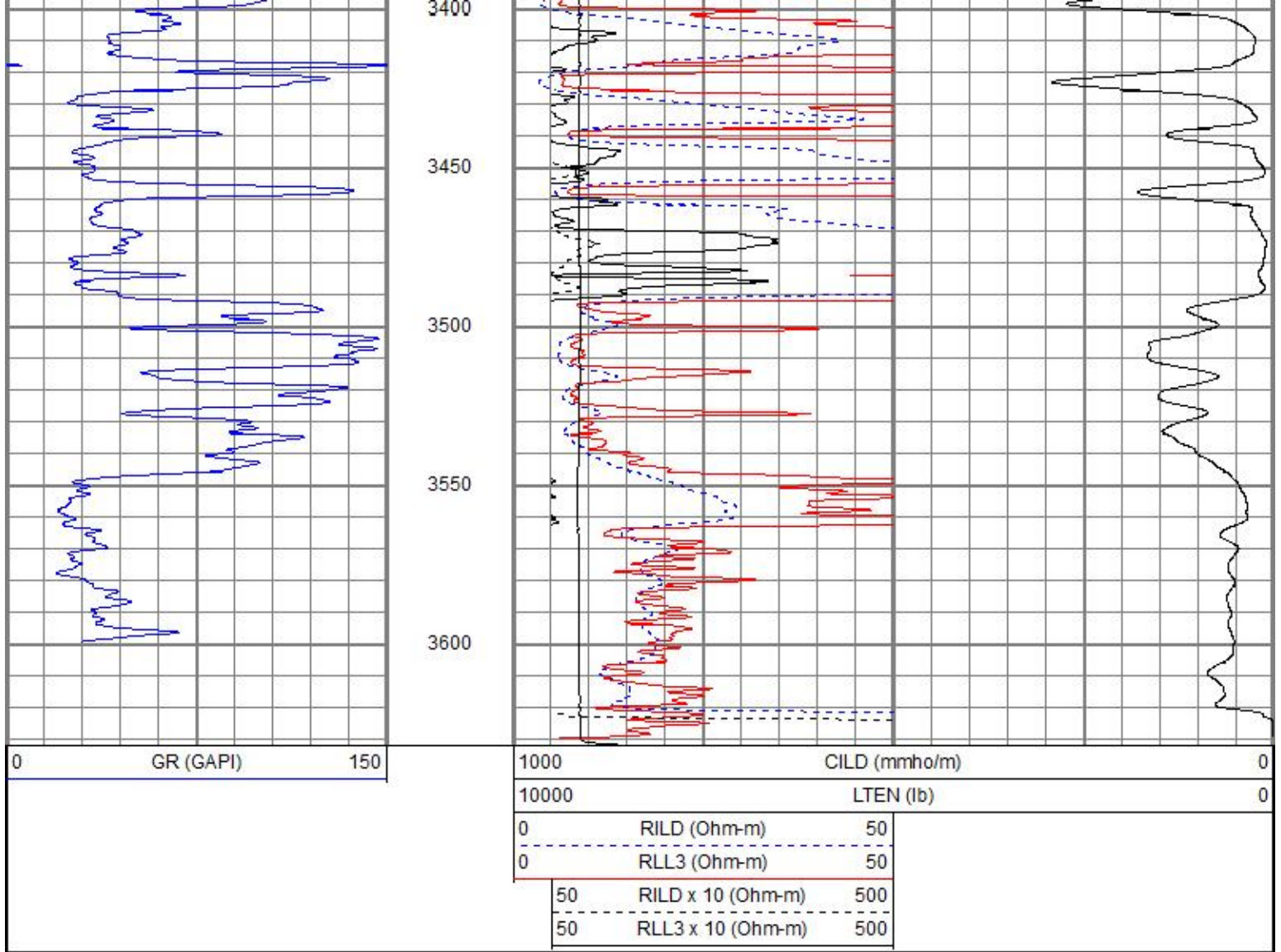








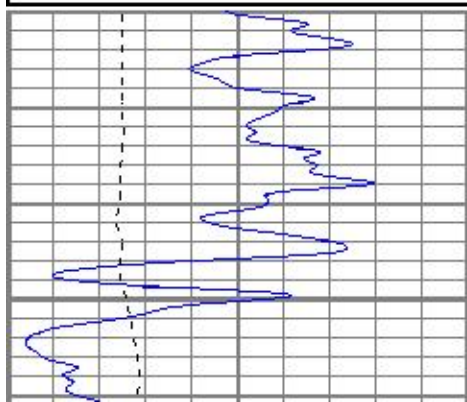




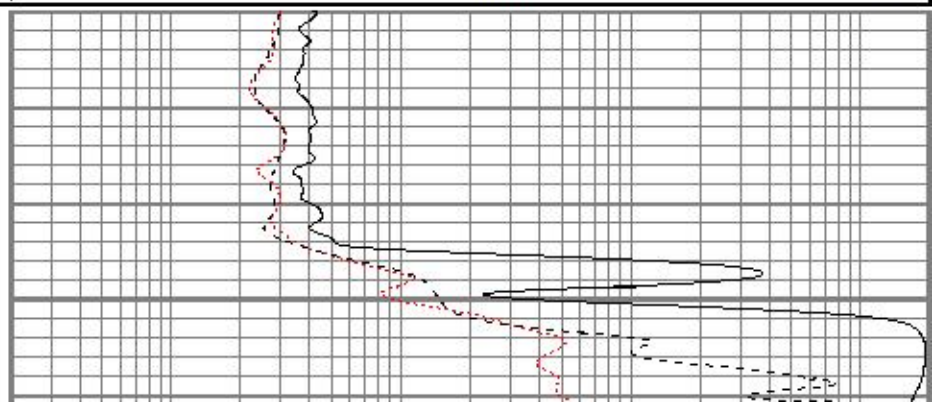
MAIN PASS

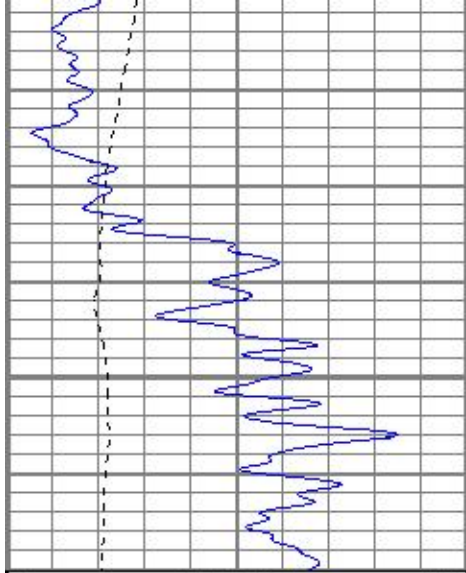
Database File hpleiker3oh.db
 Dataset Pathname pass4.1
 Presentation Format kdil
 Dataset Creation Mon Oct 23 15:38:38 2017
 Charted by Depth in Feet scaled 1:240

0	GR (GAPI)	150	0.2	RILM (Ohm-m)	2000
-100	SP (mV)	100	0.2	RILD (Ohm-m)	2000
			0.2	RLL3 (Ohm-m)	2000



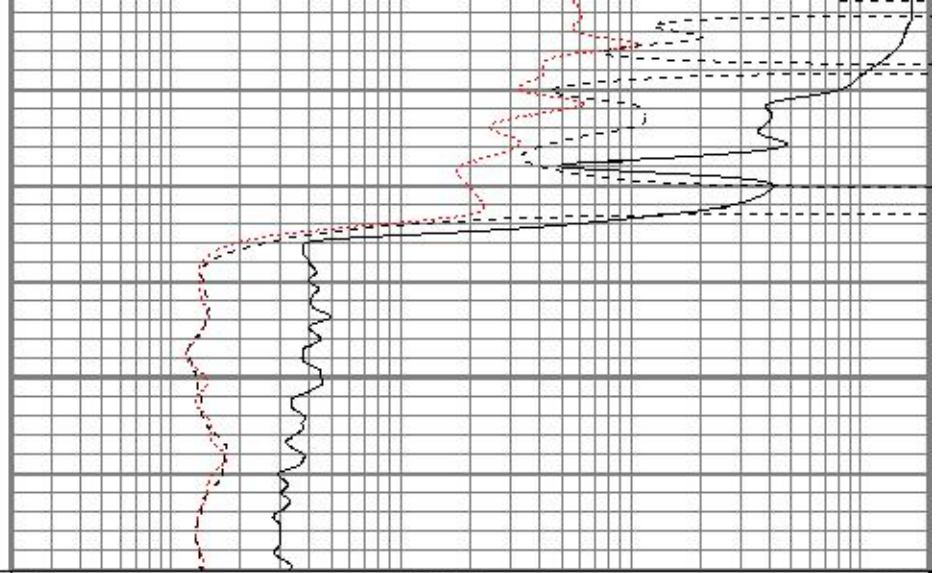
1100





1150

0	GR (GAPI)	150
-100	SP (mV)	100



0.2	RILM (Ohm-m)	2000
0.2	RILD (Ohm-m)	2000
0.2	RLL3 (Ohm-m)	2000

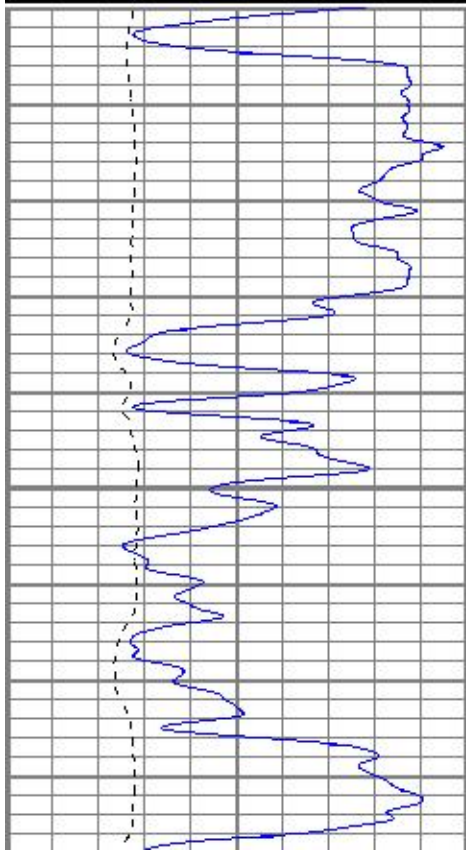


MAIN PASS

Database File hpleiker3oh.db
 Dataset Pathname pass4.1
 Presentation Format kdil
 Dataset Creation Mon Oct 23 15:38:38 2017
 Charted by Depth in Feet scaled 1:240

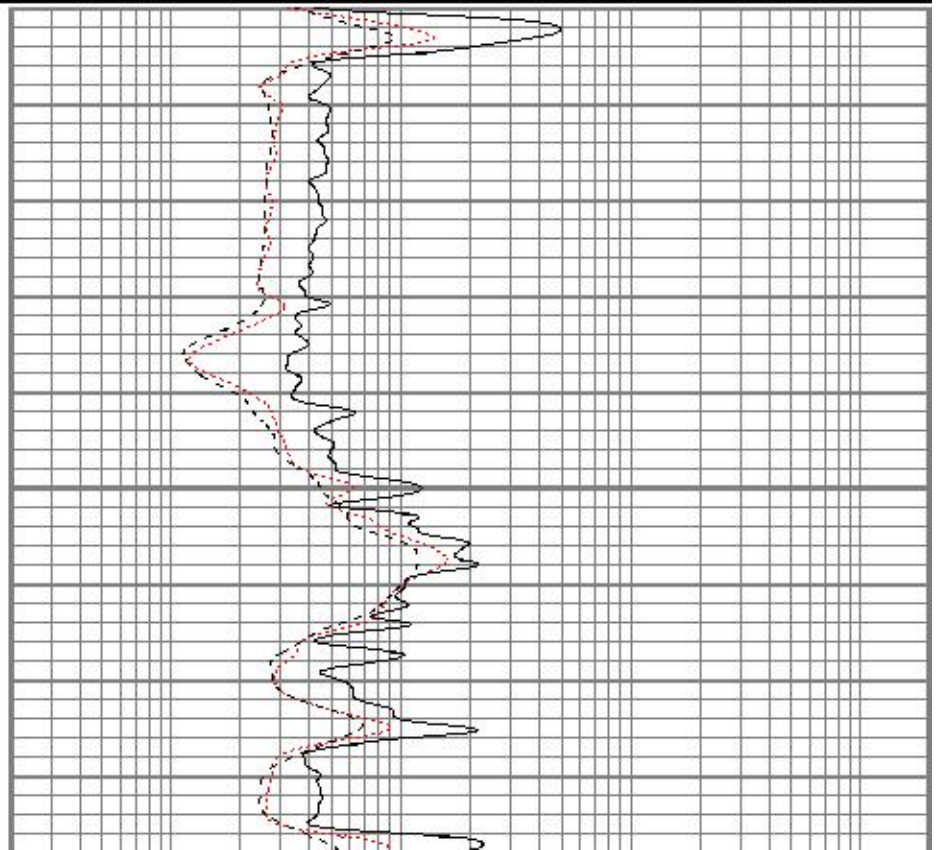
0	GR (GAPI)	150
-100	SP (mV)	100

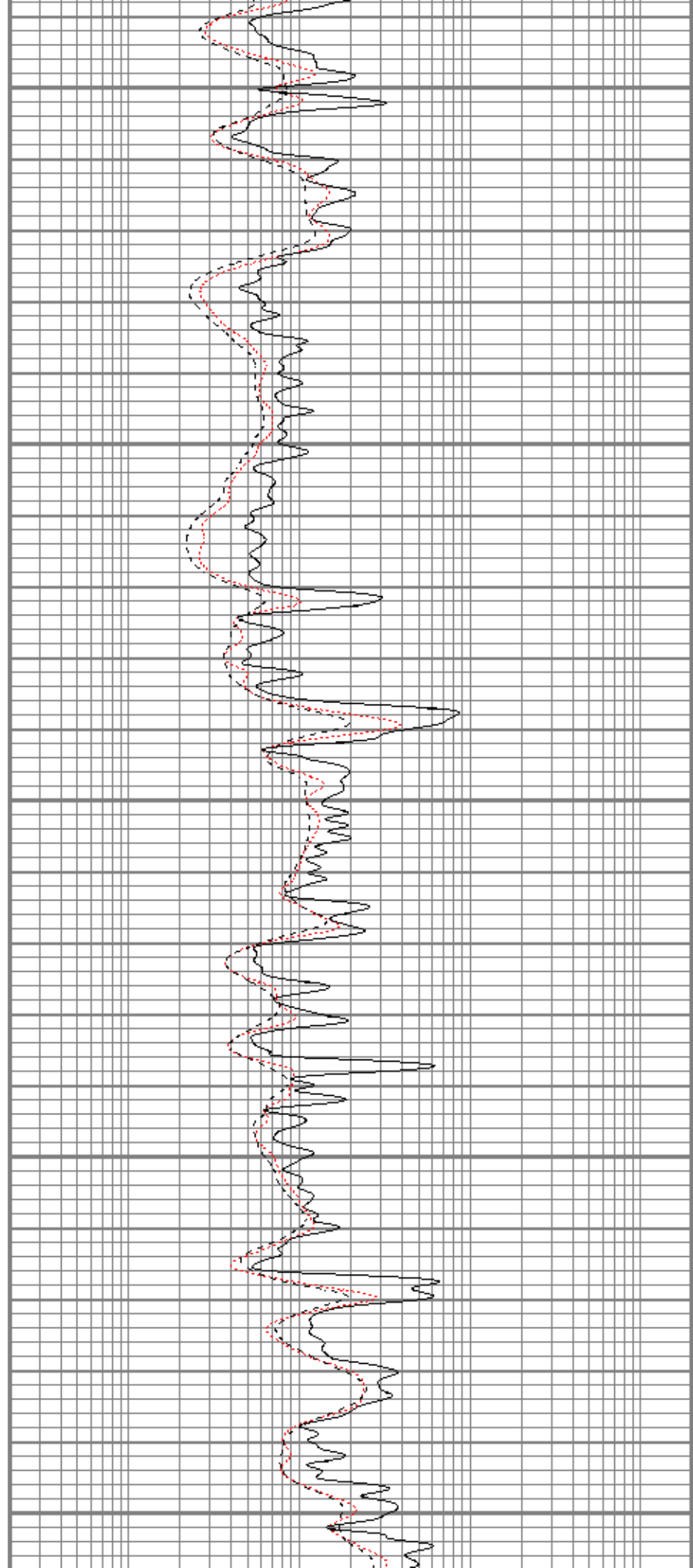
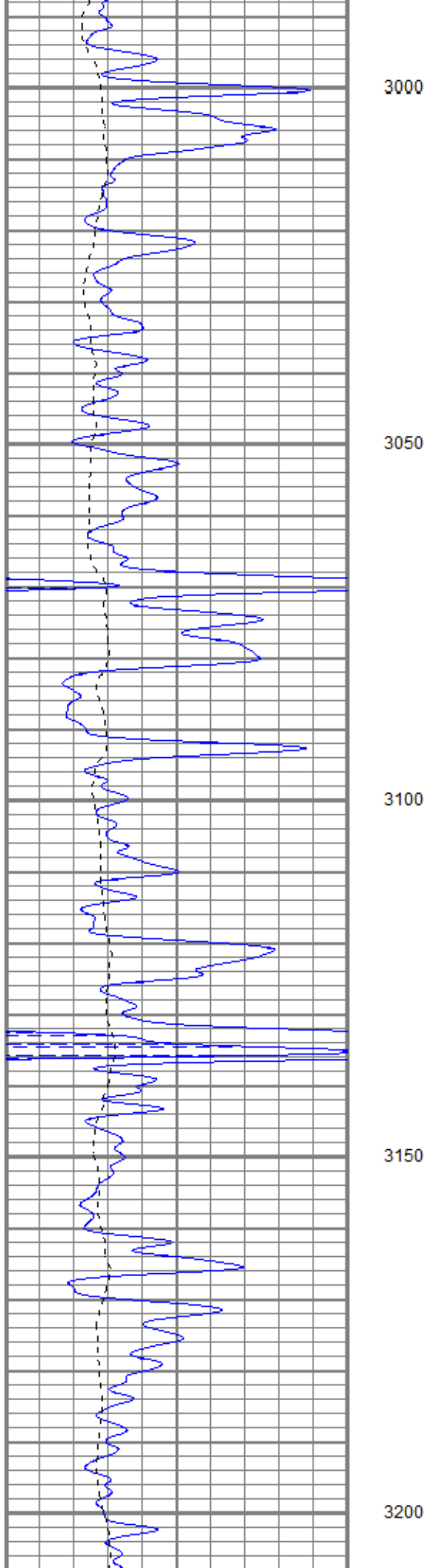
0.2	RILM (Ohm-m)	2000
0.2	RILD (Ohm-m)	2000
0.2	RLL3 (Ohm-m)	2000

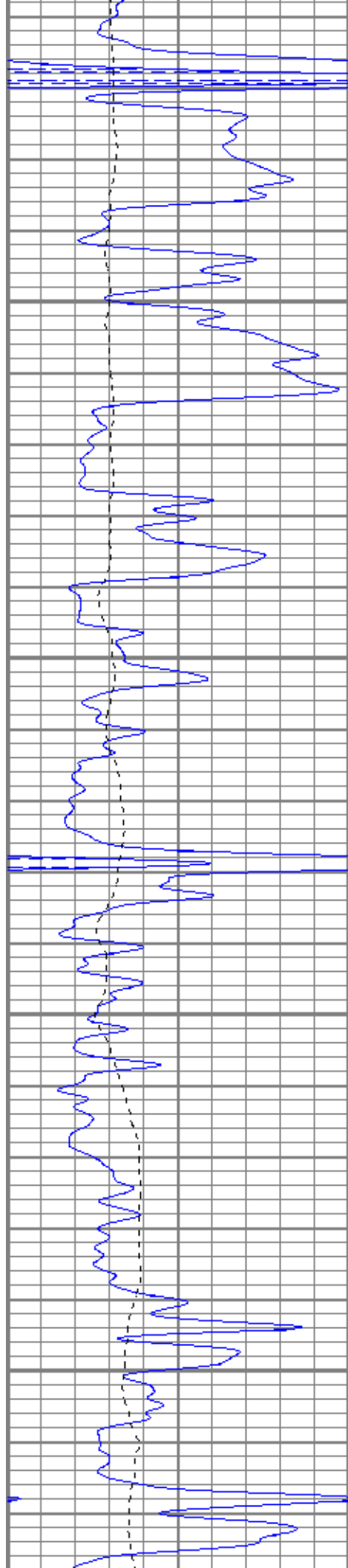


2900

2950





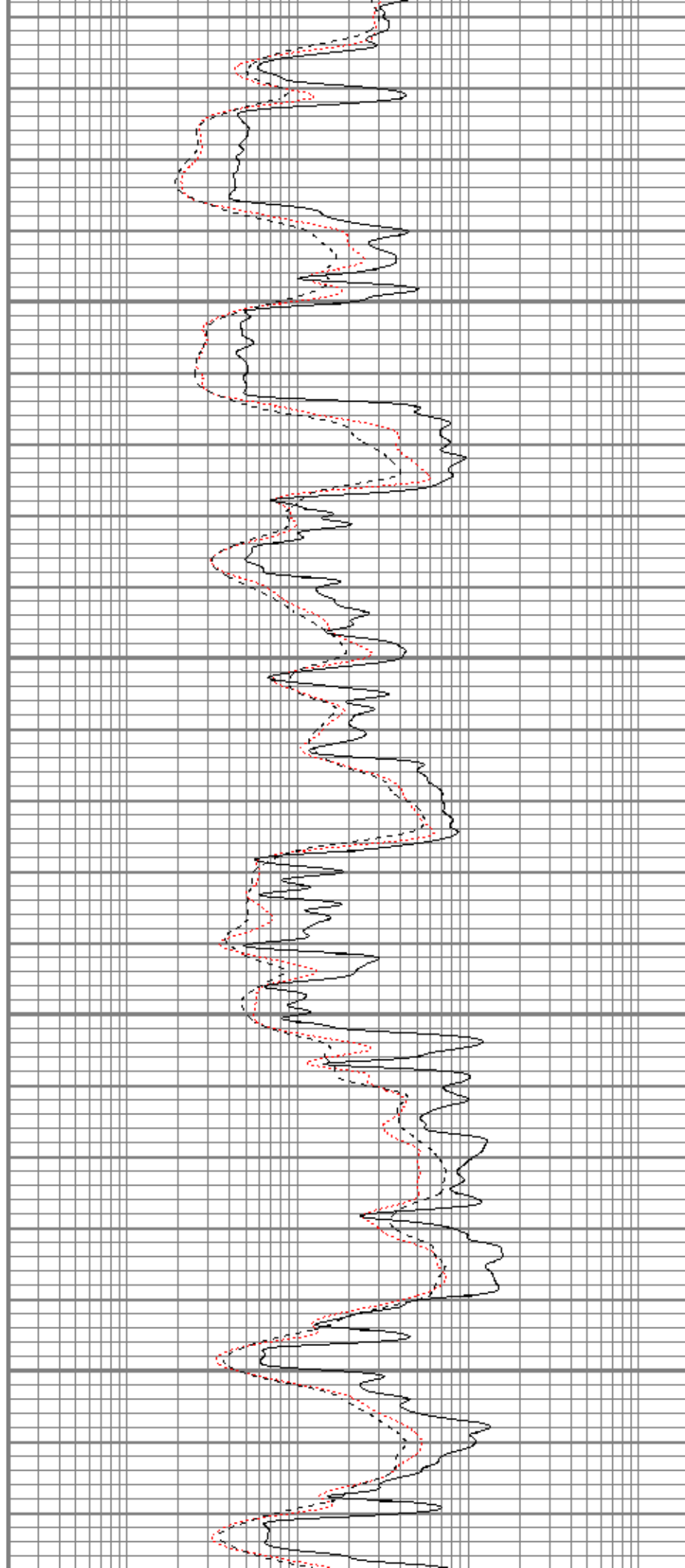


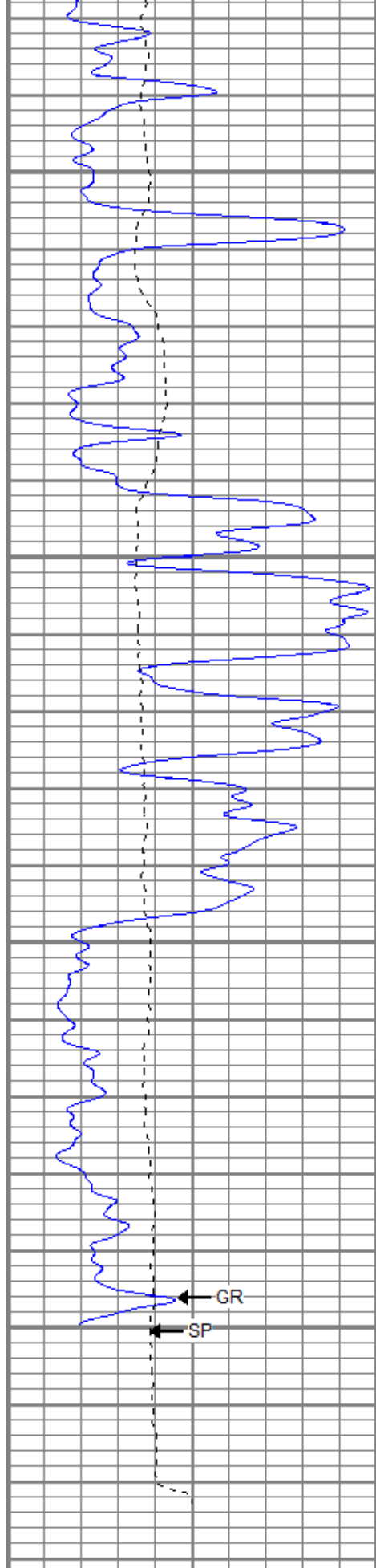
3250

3300

3350

3400





0	GR (GAPI)	150
-100	SP (mV)	100

3450

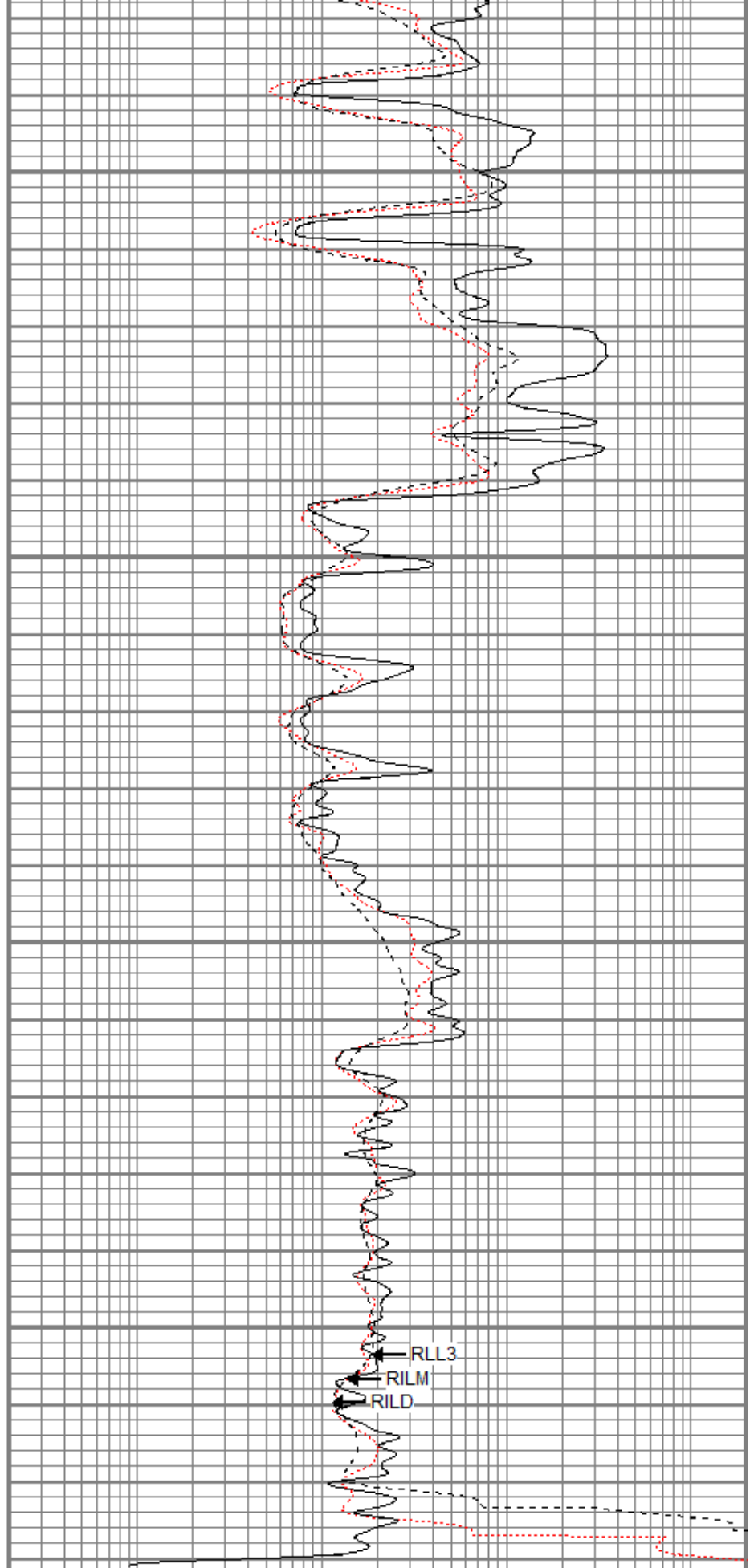
3500

3550

3600

GR

SP



0.2	RILM (Ohm-m)	2000
0.2	RILD (Ohm-m)	2000
0.2	RLL3 (Ohm-m)	2000

RLL3

RILM

RILD

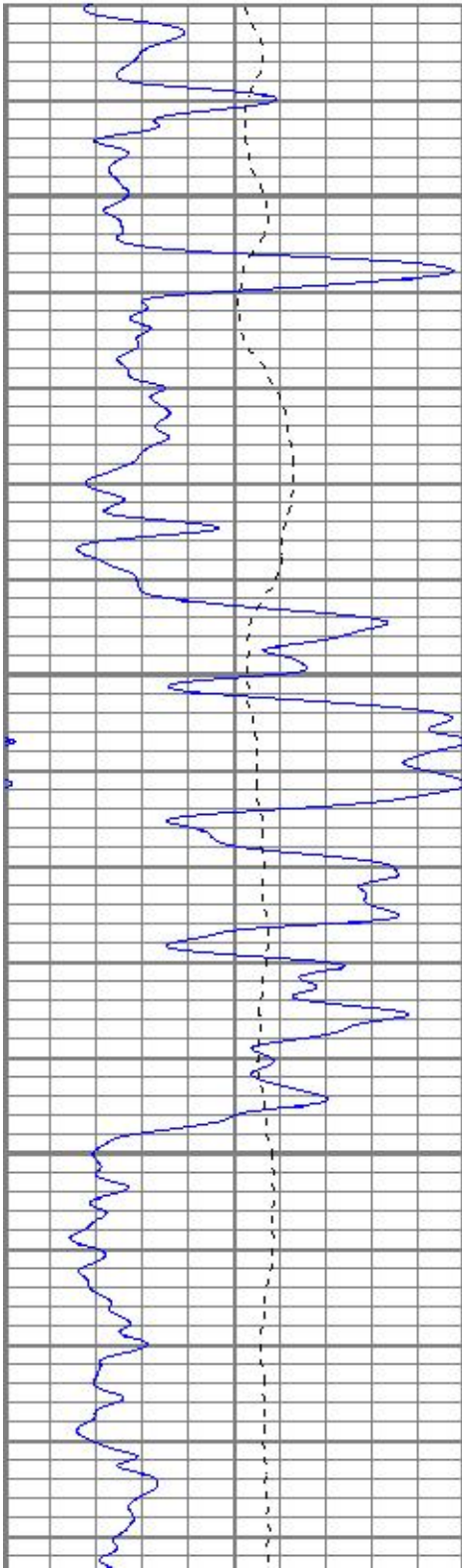


REPEAT SECTION

Database File hpleiker3oh.db
Dataset Pathname pass2.1
Presentation Format kdil
Dataset Creation Mon Oct 23 14:46:34 2017
Charted by Depth in Feet scaled 1:240

0	GR (GAPI)	150
-100	SP (mV)	100

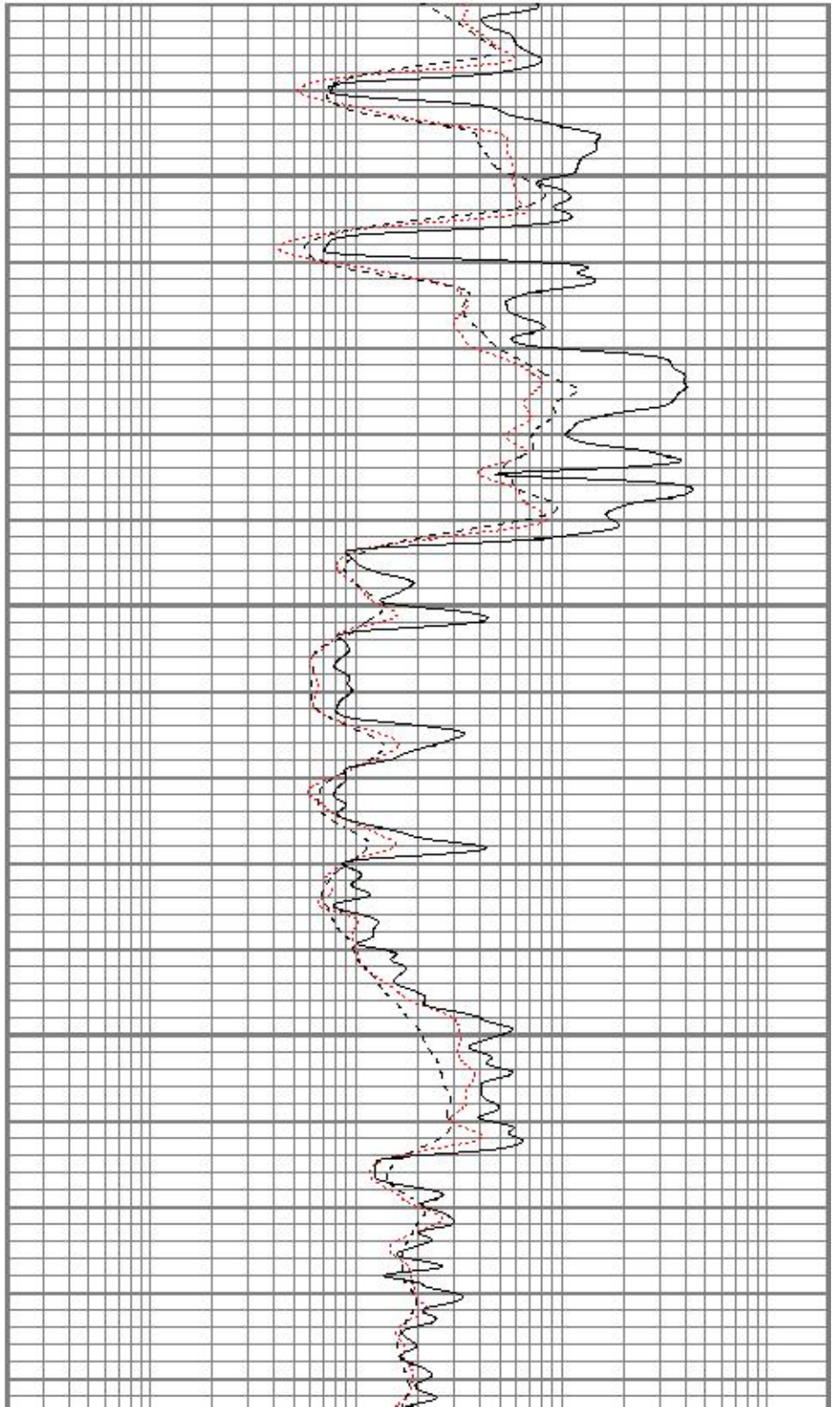
0.2	RILM (Ohm-m)	2000
0.2	RILD (Ohm-m)	2000
0.2	RLL3 (Ohm-m)	2000

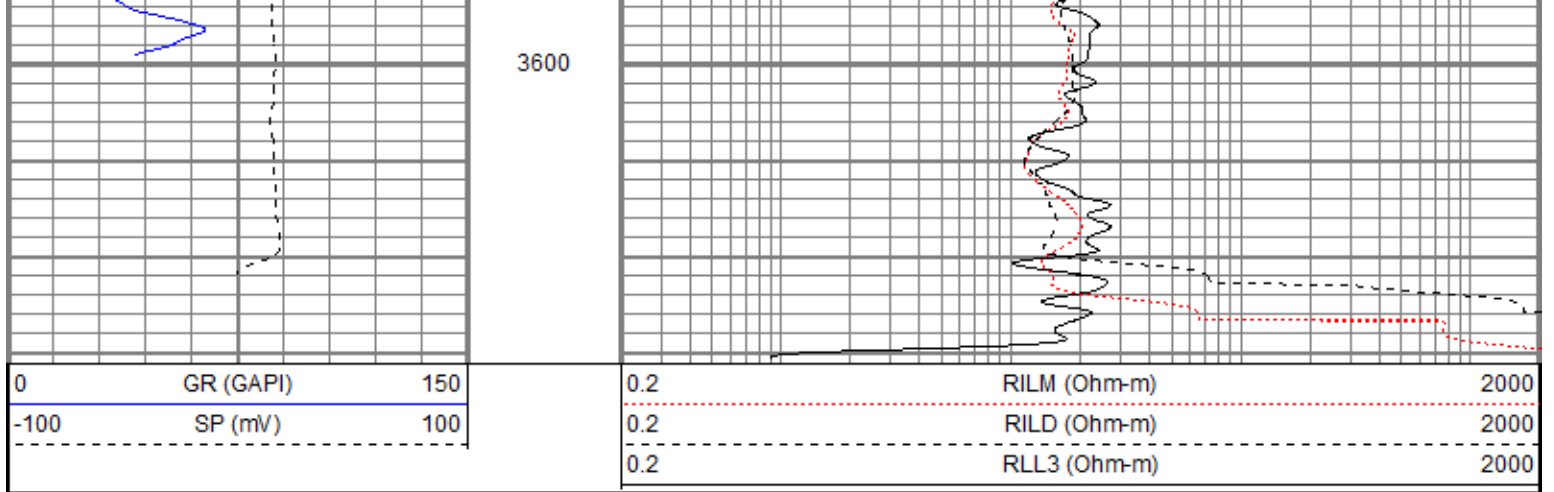


3450

3500

3550





Calibration Report

Database File hpleiker3oh.db
 Dataset Pathname pass4.1
 Dataset Creation Mon Oct 23 15:38:38 2017

Dual Induction Calibration Report

Serial-Model: 5375-G
 Surface Cal Performed: Tue Aug 15 10:21:23 2017
 Downhole Cal Performed: Tue Aug 15 10:22:14 2017
 After Survey Verification Performed: Tue Aug 15 10:22:14 2017

Surface Calibration

Loop:	Readings			References			Results	
	Air	Loop		Air	Loop		m	b
Deep	-0.003	0.635	V	0.000	350.000	mmho/m	548.445	1.715
Medium	-0.001	0.717	V	0.000	400.000	mmho/m	556.583	0.684
Internal:	Zero	Cal		Zero	Cal		m	b
Deep	-0.003	0.635	V	0.000	350.000	mmho/m	548.268	1.663
Medium	-0.001	0.718	V	0.000	400.000	mmho/m	556.234	0.694

Downhole Calibration

Internal:	Readings			References			Results	
	Zero	Cal		Zero	Cal		m	b
Deep	0.131	349.928	mmho/m	0.052	350.165	mmho/m	1.001	-0.079
Medium	-0.084	400.178	mmho/m	-0.010	400.241	mmho/m	1.000	0.073
Shallow	2.425	0.005	V	500.000	2.000	Ohm-m	205.838	0.894

After Survey Verification

Internal:	Readings			Targets			Results	
	Zero	Cal		Zero	Cal		m'	b'
Deep	0.000	0.000	mmho/m	0.131	349.928	mmho/m	1.001	-0.079
Medium	0.000	0.000	mmho/m	-0.084	400.178	mmho/m	1.000	0.073
Shallow	0.000	0.000	Ohm-m	500.000	2.000	Ohm-m	1.000	0.000

Compensated Density Calibration Report

Serial-Model: 2113TN-Aoilex
 Source / Verifier: csv n-20 /
 Master Calibration Performed: Wed Oct 11 14:43:37 2017
 Before Survey Verification Performed:
 After Survey Verification Performed:

Master Calibration

	Density		Far Detector	Near Detector	
Magnesium	1.750	g/cc	466.46	301.08	cps
Aluminum	2.690	g/cc	85.94	195.82	cps
Spine Angle = 75.73			Density/Spine Ratio = 0.539		
	Size		Reading		
Small Ring	9.35	in	1.49	V	
Large Ring	14.00	in	3.25	V	

Before Survey Verification

Target	Measured
	g/cc
	g/cc
	g/cc

After Survey Verification

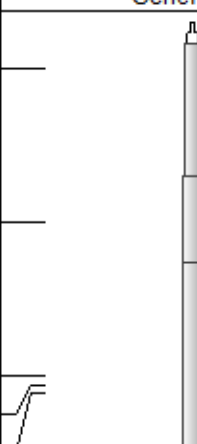
Target	Measured
	g/cc
	g/cc
	g/cc

Gamma Ray Calibration Report

Serial Number:	2213TN		
Tool Model:	Aoilex		
Performed:	Wed Oct 11 14:43:45 2017		
Calibrator Value:	1.0	GAPI	
Background Reading:	0.0	cps	
Calibrator Reading:	1.0	cps	
Sensitivity:	1.1000	GAPI/cps	

Neutron Calibration Report

Serial Number:	2301AN		
Tool Model:	Oilex		
Performed:	Wed Oct 11 14:43:43 2017		
Calibrator Value:	1	NAPI	
Calibrator Reading:	1	cps	
Sensitivity:	1	NAPI/cps	

Sensor	Offset (ft)	Schematic	Description	Length (ft)	O.D. (in)	Weight (lb)
NEU	34.62		CHD-None	0.75	1.50	5.00
			NEU-Oilex (2301AN) Oilex 100V NEU	4.27	3.50	80.00
GR	29.60		GR-Aoilex (2213TN) Admyr GR	2.84	4.00	50.00
LSD DCAL	24.57 24.30		CDL-Aoilex (2113TN) Admyr Oilex	6.80	4.00	250.00

SSD	24.05					
SP	10.60					
CILD	10.60			DIL-G (5375) Gearhart	21.47	4.00
CILM	6.89					
RLL3	1.70					

Dataset: hpleiker3oh.db: field/well/run1/pass4.1
 Total length: 36.14 ft
 Total weight: 730.00 lb
 O.D.: 4.00 in