

MUD LOG
WellSight Systems
Scale 1:240 (5"=100') Imperial
Measured Depth Log

Well Name: Moore #1
API: 15-165 -22154-00-00
Location: SE SE NW NW S25-18S-16W
License Number: 35425
Spud Date: 12/01/2017
Surface Coordinates: 1270 FNL - 1310FWL
Region: Kansas
Drilling Completed: 12/07/2017
Bottom Hole Coordinates: Same as surface coordinates
Ground Elevation (ft): 1928
Logged Interval (ft): 0 To: 3635
Formation: Granite @ Total Depth
Type of Drilling Fluid: Chemical Drispac
K.B. Elevation (ft): 1938
Total Depth (ft): 3635

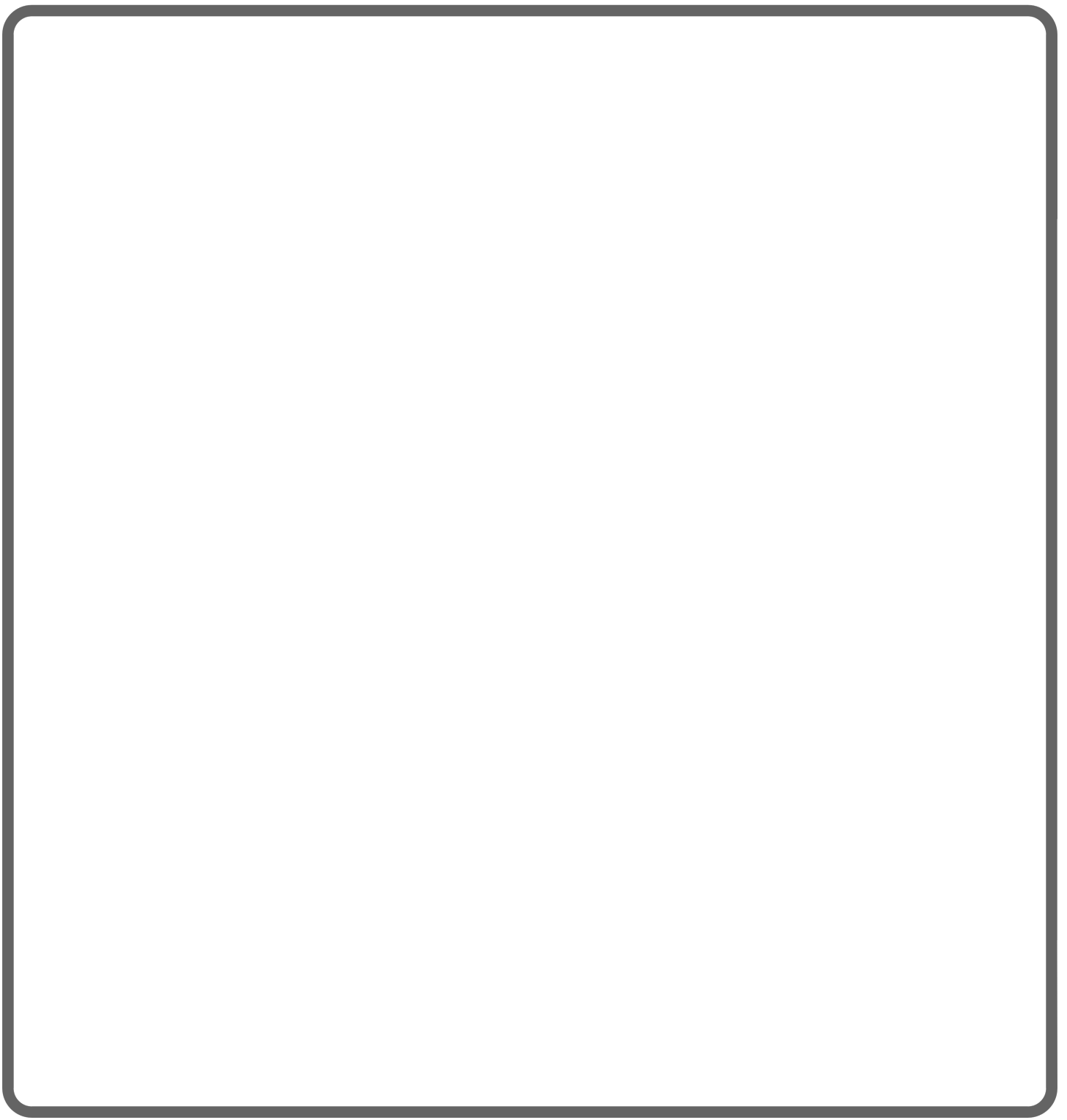
Printed by MudLog from WellSight Systems 1-800-447-1534 www.WellSight.com

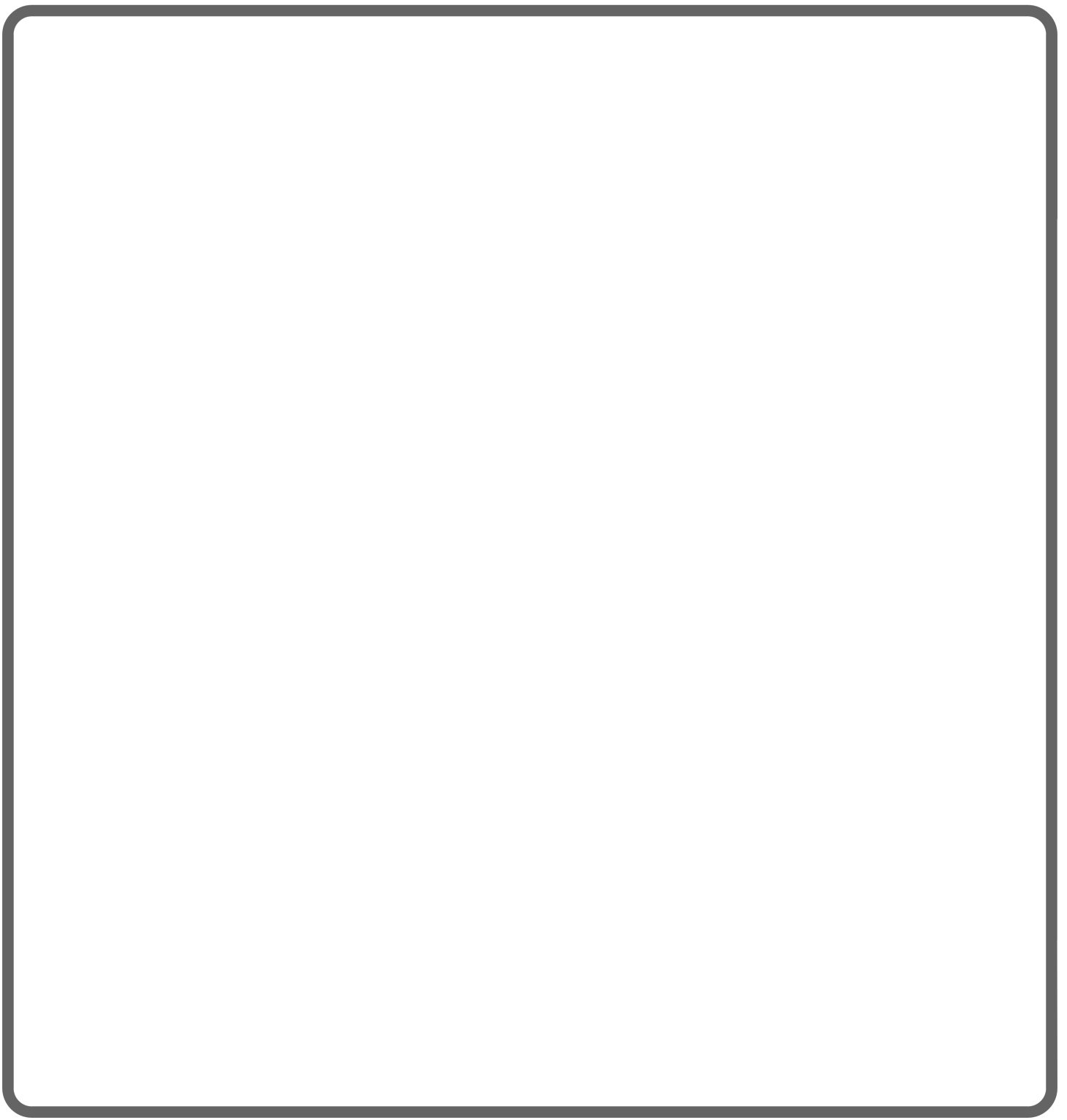
OPERATOR

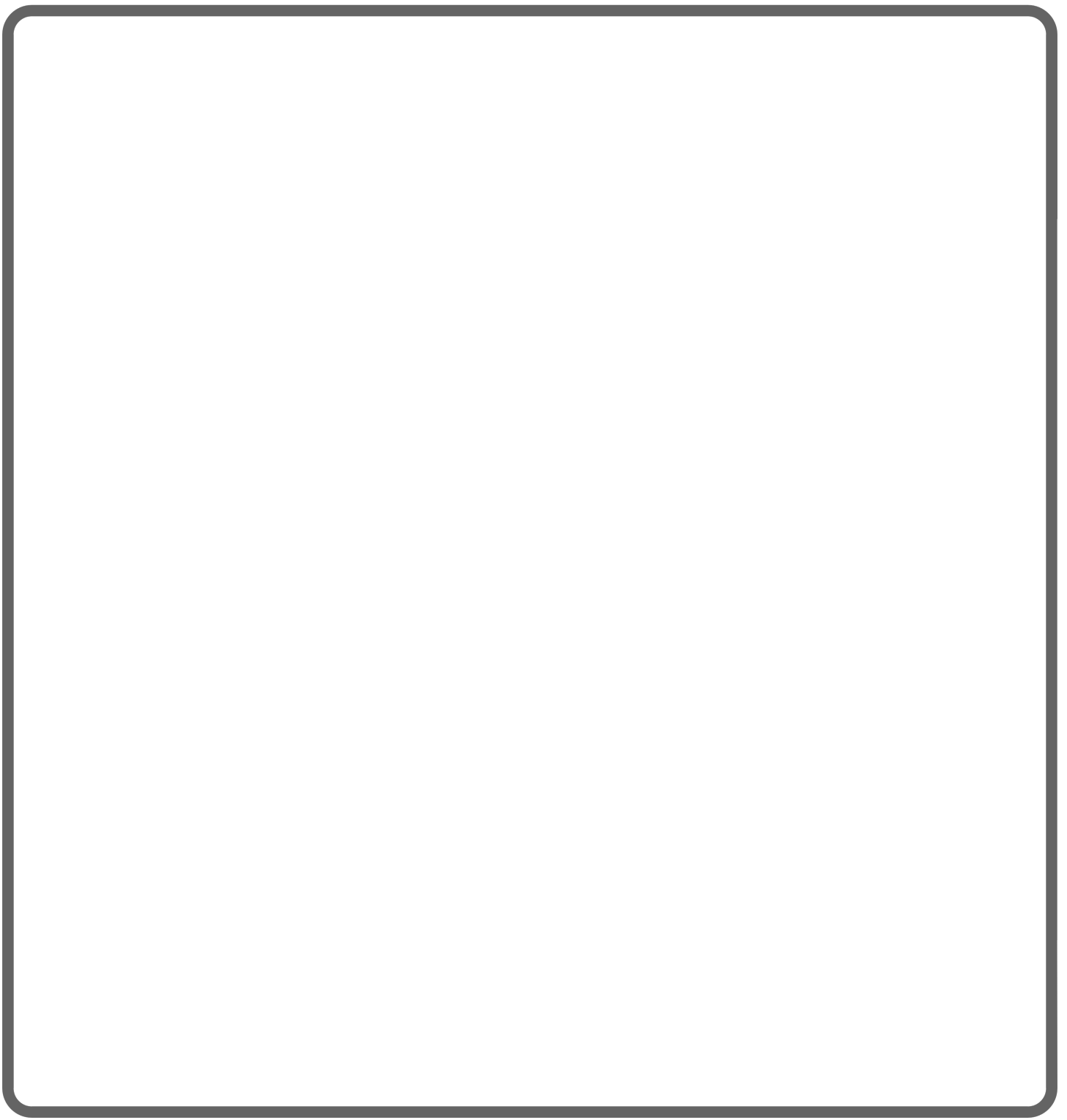
Company: Black Stone Petroleum
Address: 1041 N. White tail CT

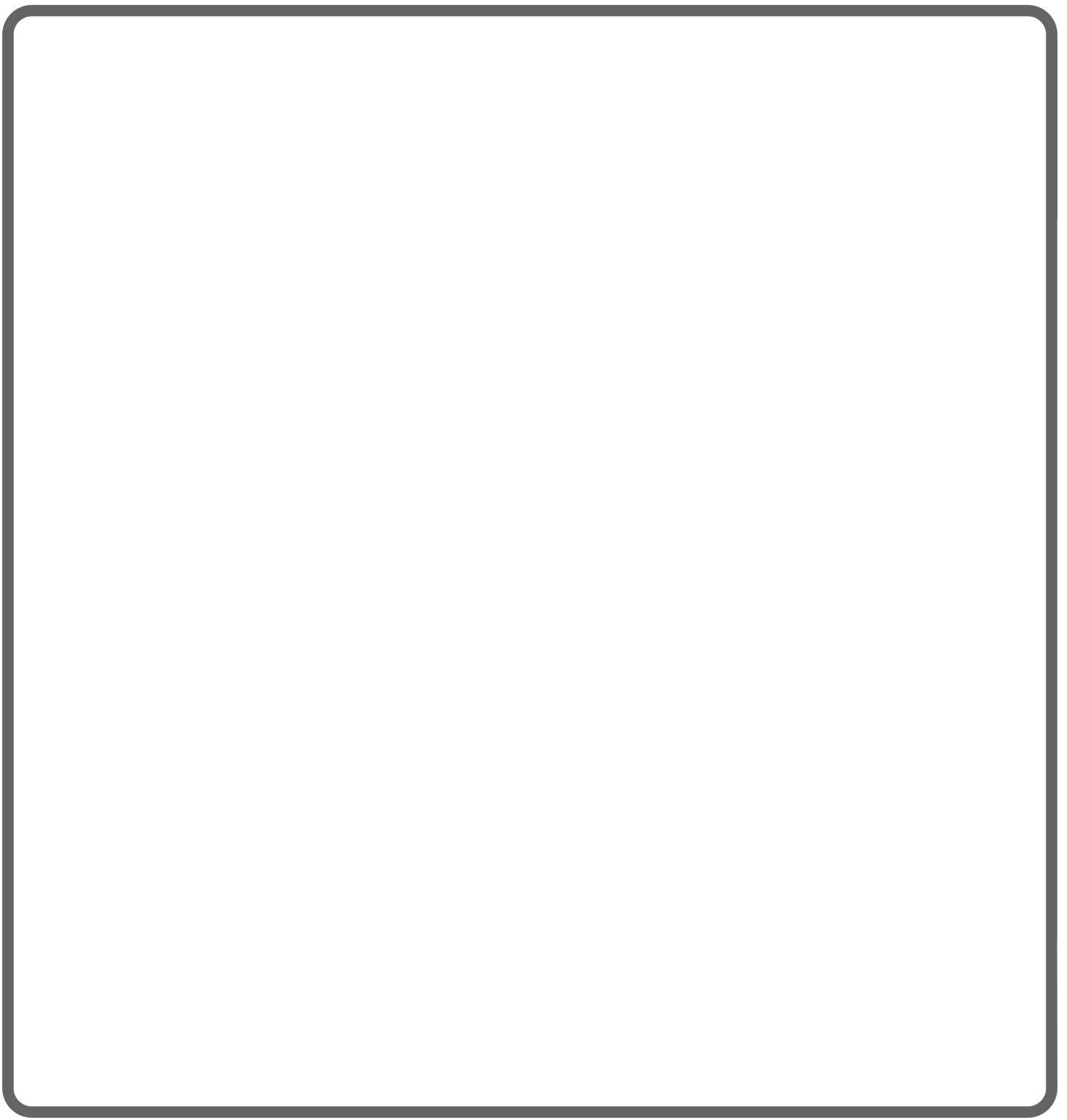
GEOLOGIST

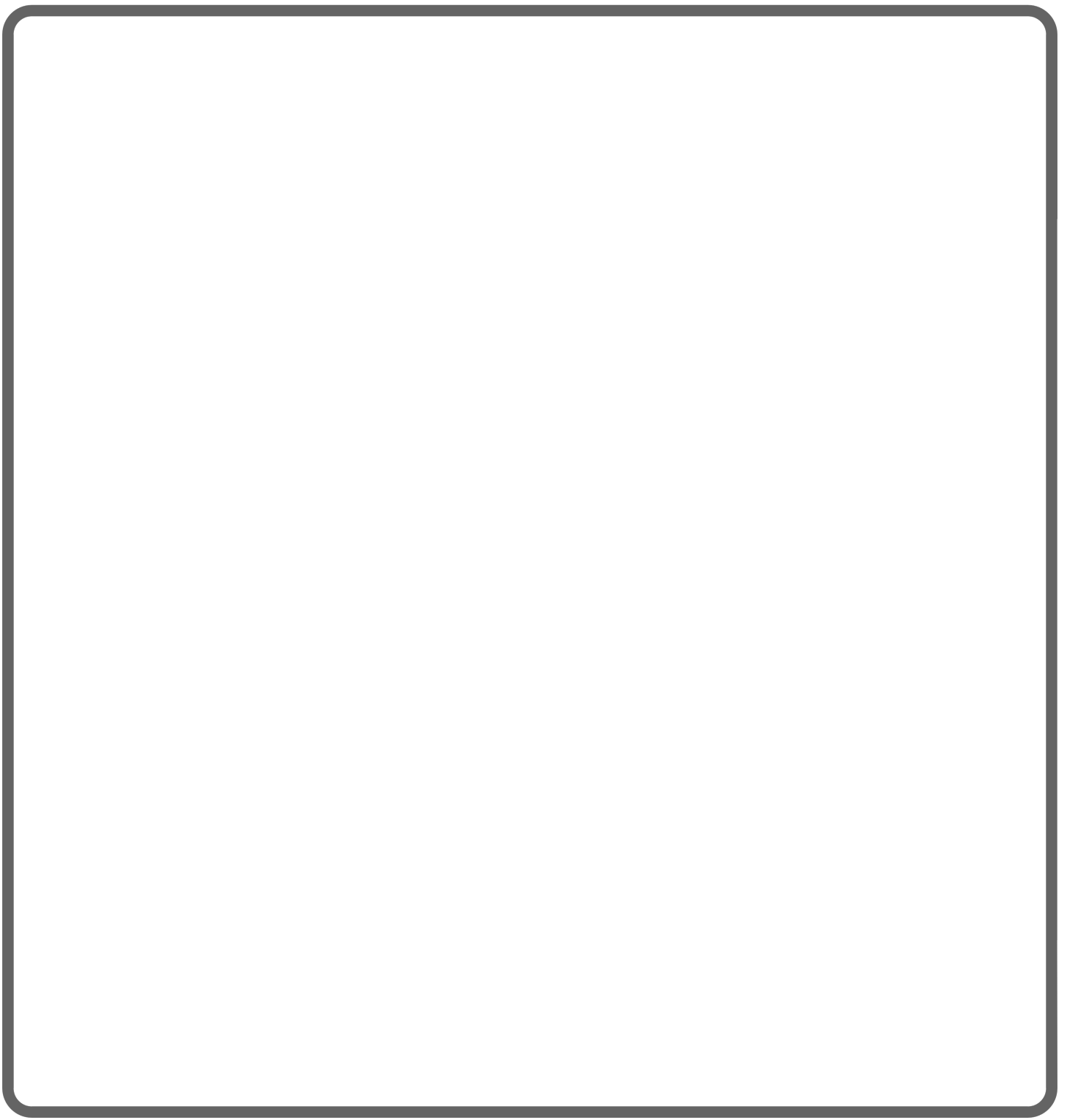
Name: Keaton Jones
Company: Jones Oil, LLC
Address: P.O Box 43
St. John KS, 67576
(620)-546-4010

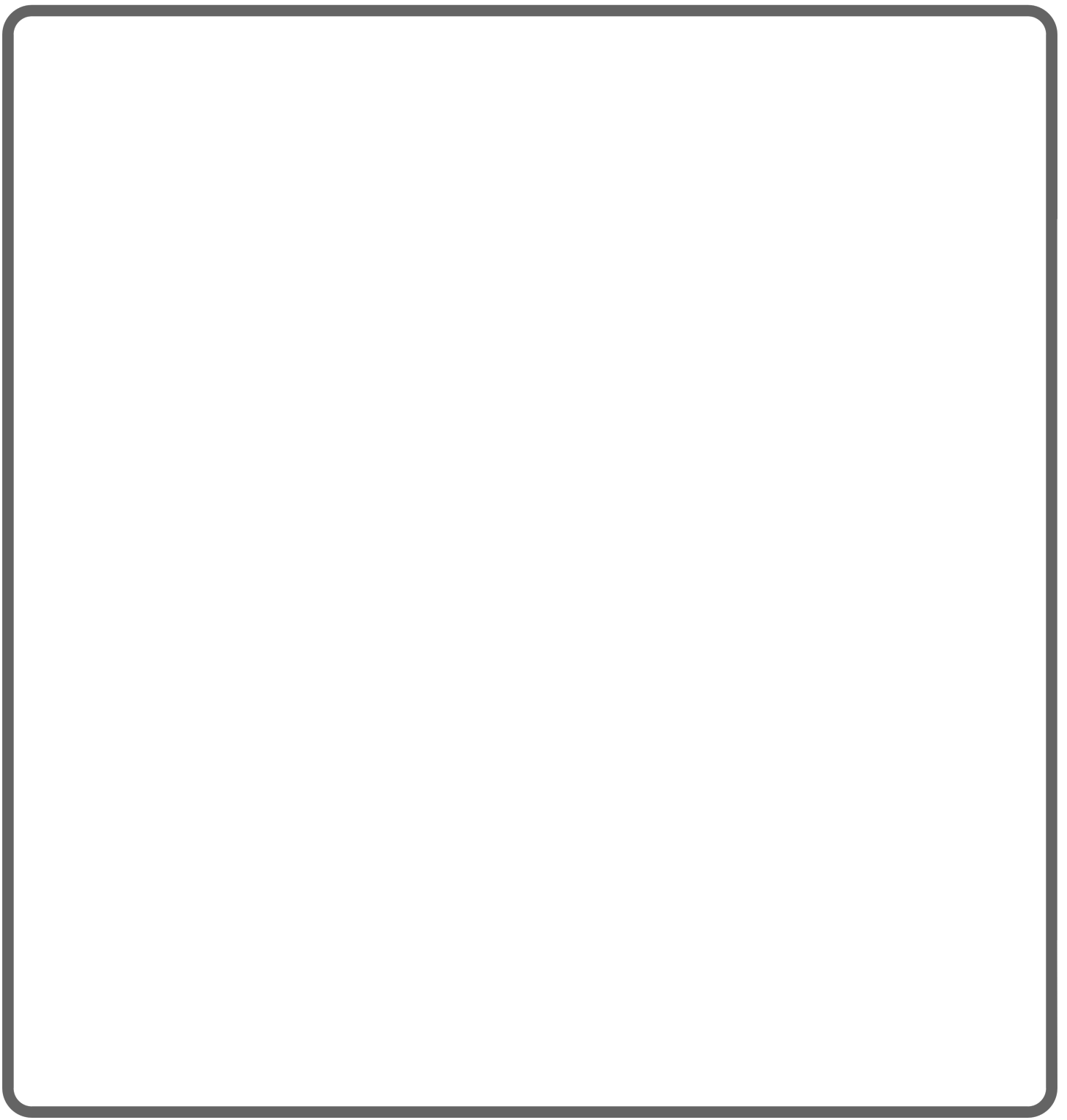


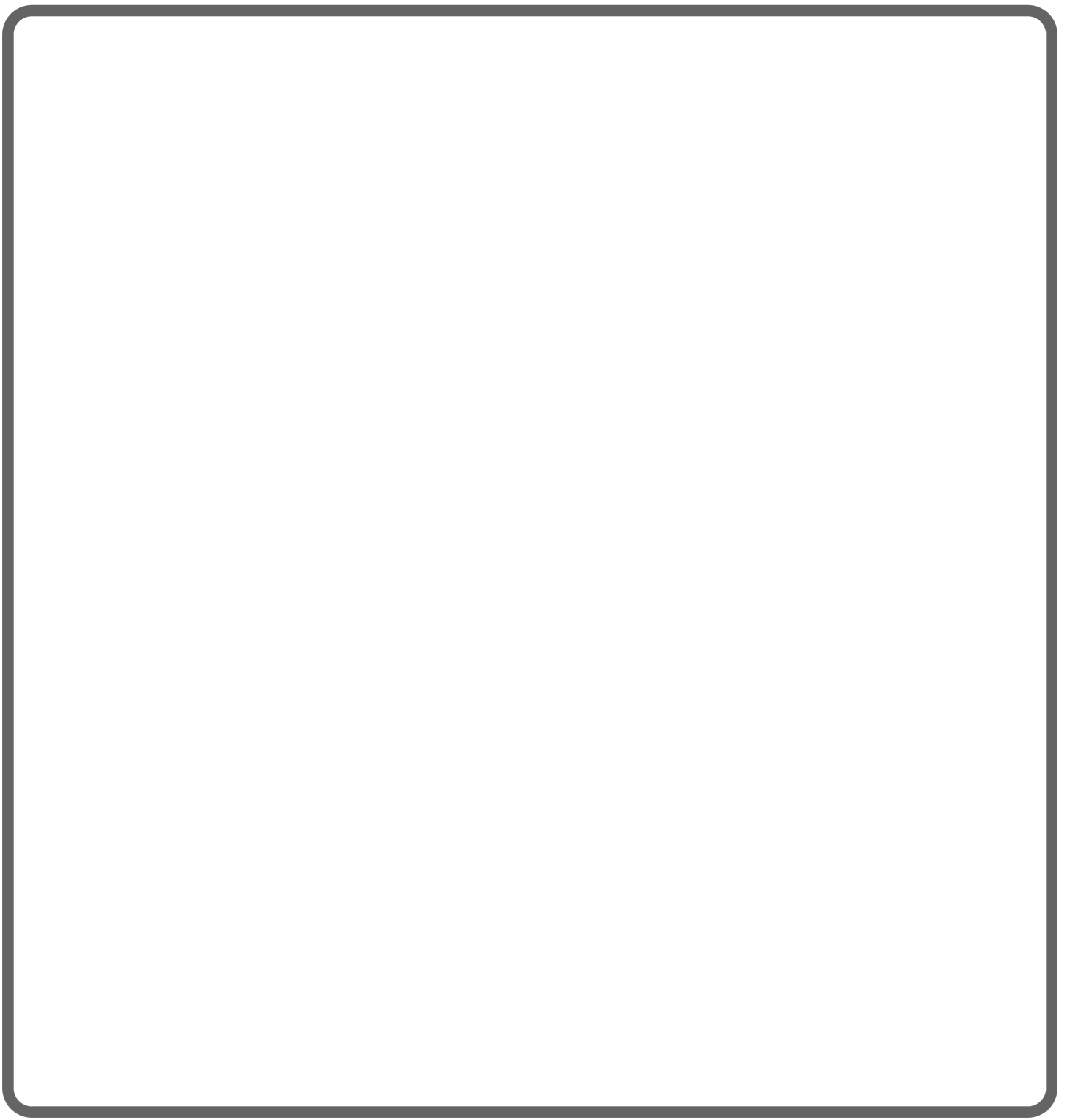


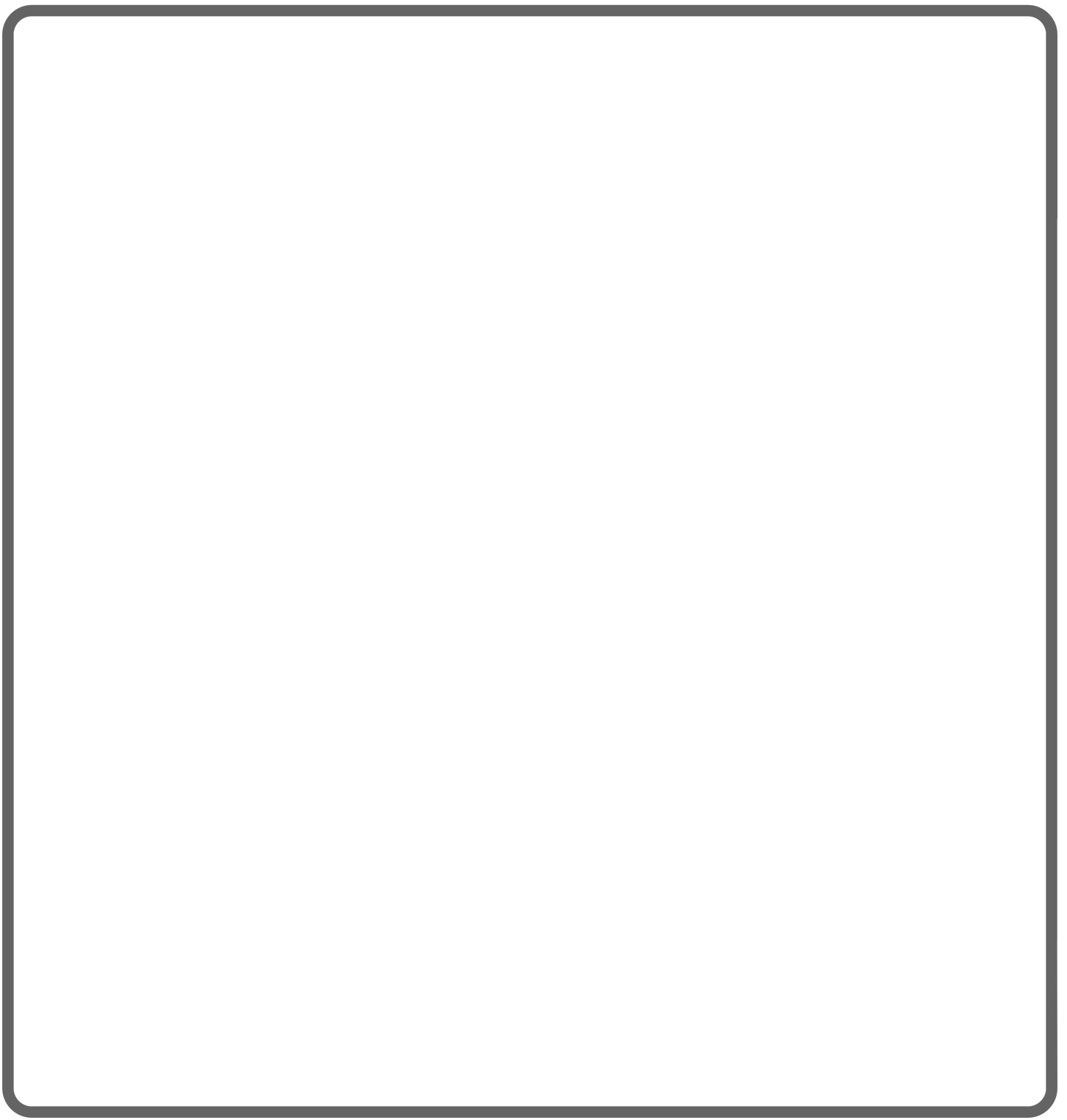












DSTs

Remarks

	Curve Track 1 ROP (min/ft) ——— Gas (units) ——— Gamma (API) ———	Oil Shows Depth	Lithology	Geological Descriptions	Drill Stem Tests	Drilling Fluid, Surveys, Etc.
Circulating Stops	<div style="display: flex; align-items: flex-start;"> <div style="margin-right: 5px;">0</div> <div style="margin-right: 5px;">0</div> <div style="margin-right: 5px;">0</div> <div style="margin-right: 5px;">ROP (min/ft)</div> <div style="margin-right: 5px;">Gas (units)</div> <div style="margin-right: 5px;">Gamma (API)</div> <div style="margin-right: 5px;">5</div> <div style="margin-right: 5px;">100</div> <div style="margin-right: 5px;">150</div> </div>	15				

ROP (min/ft) 5
Gas (units) 100
Gamma (API) 150

1600

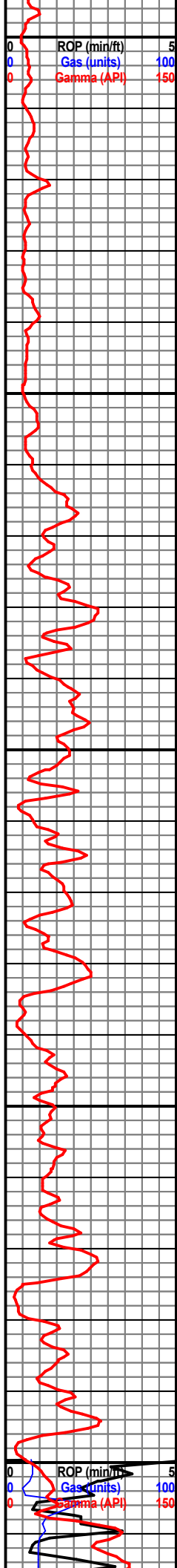
1650

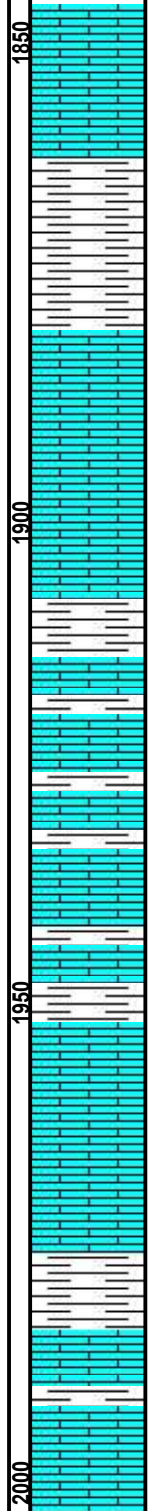
1700

1750

1800

ROP (min/ft) 5
Gas (units) 100
Gamma (API) 150





Ls - Br - weathered to vuggy Por - fractured with shale streaks - Nsfo&g

Metal shavings in samples

Ls - grey - shale streaks - dse - MedxIn - weathered in most - fractured and fossiliferous No Shows

Metal shavings in sample

ROP - Off

Ls - tan to cream - sandy - weathered - foss in few - MedxIn - No Shows

Sh - gray - ss in part

Ls - whte to cream - sandy in some - MedxIn - Nsfo&g

Ls - gray -MedxIn - highly weathered - No shows

Conn - 1931

ss/sh to silty - red to brown - vry soft and chalky

as above

Sh - predominately grey - some green and sandy - vry soft

Ls - grey - MedxIn - dse - foss in most - No shows

Conn 1963

Ls - grey to tan - MedxIn - highly weathered - fossiliferous - shale streaks through most - No Shows

Ls- cream to grey - MedxIn - weathered with blue shale streaks - vuggy in spots - No Shows

Conn 1995

Ls- Dol - white - slight reaction with HCl - weathered to Vuggy por - MedxIn - No Shows

Ls - white to cream - fine xIn - no shows

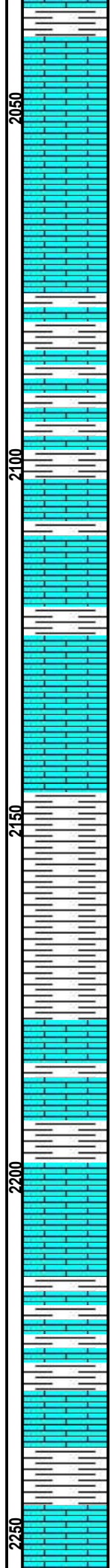
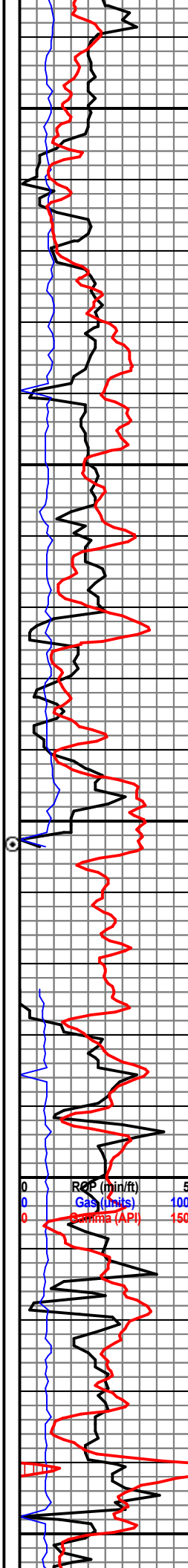
Ls - white to grey - MedxIn - weathered, vuggy to oolitic porosity - fossiliferous in most - No Shows
No Odor

Conn 2026

Ch - dol - pink - no reaction to HCL - DSE - FineXIn

Ls - grey to br - MedxIn - vuggy porosity - foss in most - No Shows - Samples are coming up really fine

0 ROP (mir/ft) 5
0 Gas (units) 100
0 Gamma (API) 150



sh - grey to dark gey

Ls - mstly tan - foss - Medxln - No Shows -

As Above - with an increase in shale

Various colored shales and limestones

mostly limestone - samples are ground very small

Sh - grey to black - Individual sand grains in most - very chalky and soft

Ls - br to tan - Medxln - foss in most and oolitic in sme - No Shows

Ls - tan to grey - cherty in sme - foss with Medxln - dse - no shows

Ls - tan in mst - foss with Medxln - fractured - fairly shaly no shows

Shale - Grey

Ls - br - large oolites in mst - oolitic in sme - foss in most - oolitic pieces are fairly weathered - some dolomitic pink pieces with a vuggy Porosity - No Shows - No Odor

Ls - br - oolitic some with large oolites - finexln - foss - pieces with large oolites are vry dse - sme w/ largexln and well developed calcite crystals No Shows

Ls - grey and vry shaly - weathered - dse

Ls - cream - Dse - foss - Medxln - No Shows

Shale

Ls - br to tan - Medxln - dse - foss - large oolites - rexln sparite - No Shows

As Above with an increase in Oolitic Ls and red SS chalky

Ls - white - oolitic in mst - Fine xln - foss - pyrite along fractures - No Shows

Ls - tan to br - highly oolitic - fine xln - dse - foss - No Shows

Conn 2058

Conn 2091

Conn 2121

Conn 2153

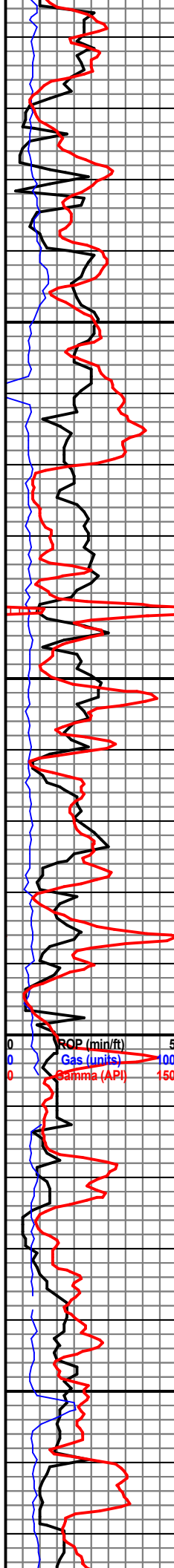
running wireline survey @ 2153 - 2.5 degrees deviation

Conn 2185

Conn 2216

Conn 2248

ROP (min/ft) 5
Gas (units) 100
Swirl (API) 150



Shows

Ls - grey - white oolites - vuggy por in mst - MedXIn - No shows

Ls - white - oolitic - MedXIn - vuggy weathered por - foss - No Shows No Odor

Ls - br - highly foss - mineral staining - coarseXIn - No Shows

sh / clay - vry soft - red - sme of the more dense pieces were predominately SS - red in color as well

SS - red vry fine grained - well sorted - very silty-clay -

Ls - white - Med-FinXIn - fairly dse - a few vuggy por - No Shows

Ls - white - MedXIn - vuggular por in mst - sme pinpoint Fo&G only when broken mstly residual staining - vry Faint Odr

Sh - mstly grey slightly ss with black shale streaks

Ls - grey to tan - foss MedXIn - No Shows No Odr

Ls - White - MedXIn Highly Foss/Frac - SFO&G when broken - vry faint to no odor.

Ls - white - FineXIn - a few well defined fractures No shows No Odor

Ls - tan to white - MedXIn - fairly dse - Foss in mst - No Shows

As Above

Ls - Tan - Highly Foss - LargeXIn - dse - No Shows No Odor

Ls - Yellow-brown with sh stringers throughout - MedXIn - Fract - Dse - No Shows No Odor

Ls - Grey - Large XIn - Highly foss - vry dse - No Shows

Sh - Grey - sandy in part

Conn 2280

Conn 2312

Conn 2344

Conn 2375

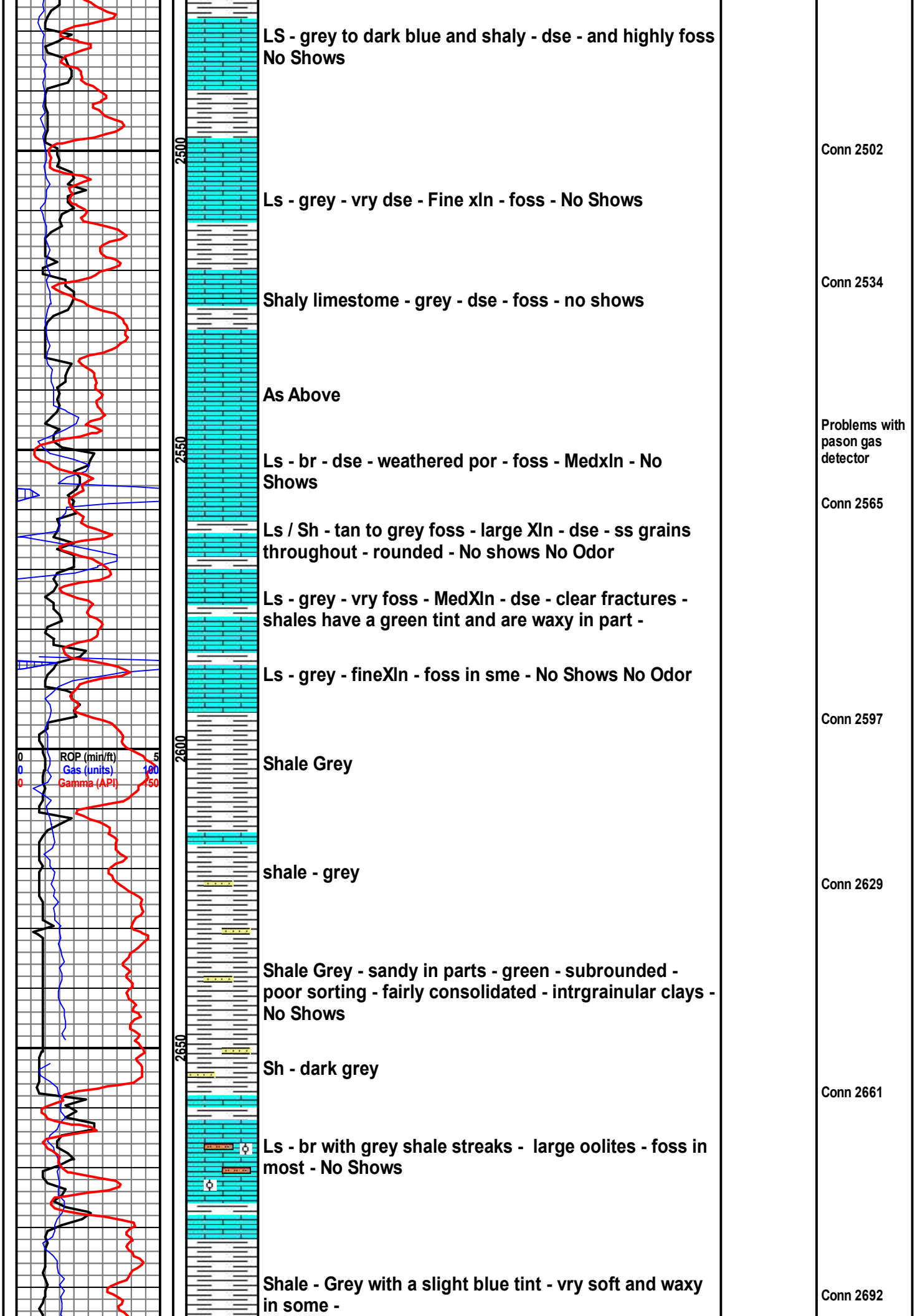
Conn 2403

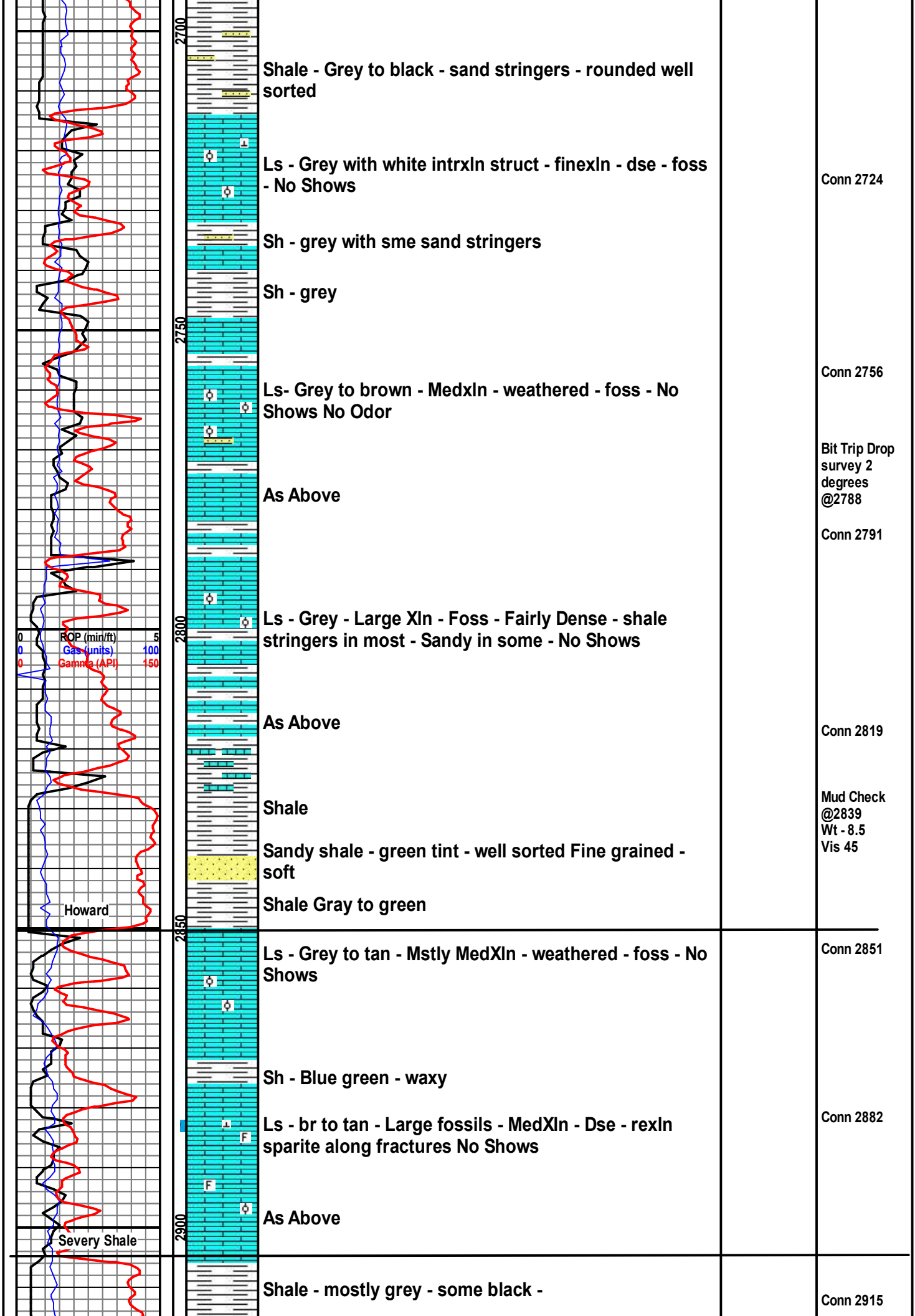
Displace mud @ 2400'

Conn 2437

Wt - 8.5
Vis - 68
Chl - 24,000

Conn 2470





Shale - Grey to black - sand stringers - rounded well sorted

Ls - Grey with white intrxn struct - finexln - dse - foss - No Shows

Sh - grey with sme sand stringers

Sh - grey

Ls- Grey to brown - Medxln - weathered - foss - No Shows No Odor

As Above

Ls - Grey - Large Xln - Foss - Fairly Dense - shale stringers in most - Sandy in some - No Shows

As Above

Shale

Sandy shale - green tint - well sorted Fine grained - soft

Shale Gray to green

Ls - Grey to tan - Mstly MedXln - weathered - foss - No Shows

Sh - Blue green - waxy

Ls - br to tan - Large fossils - MedXln - Dse - rexln sparite along fractures No Shows

As Above

Shale - mostly grey - some black -

Conn 2724

Conn 2756

Bit Trip Drop survey 2 degrees @2788

Conn 2791

Conn 2819

Mud Check @2839 Wt - 8.5 Vis 45

Conn 2851

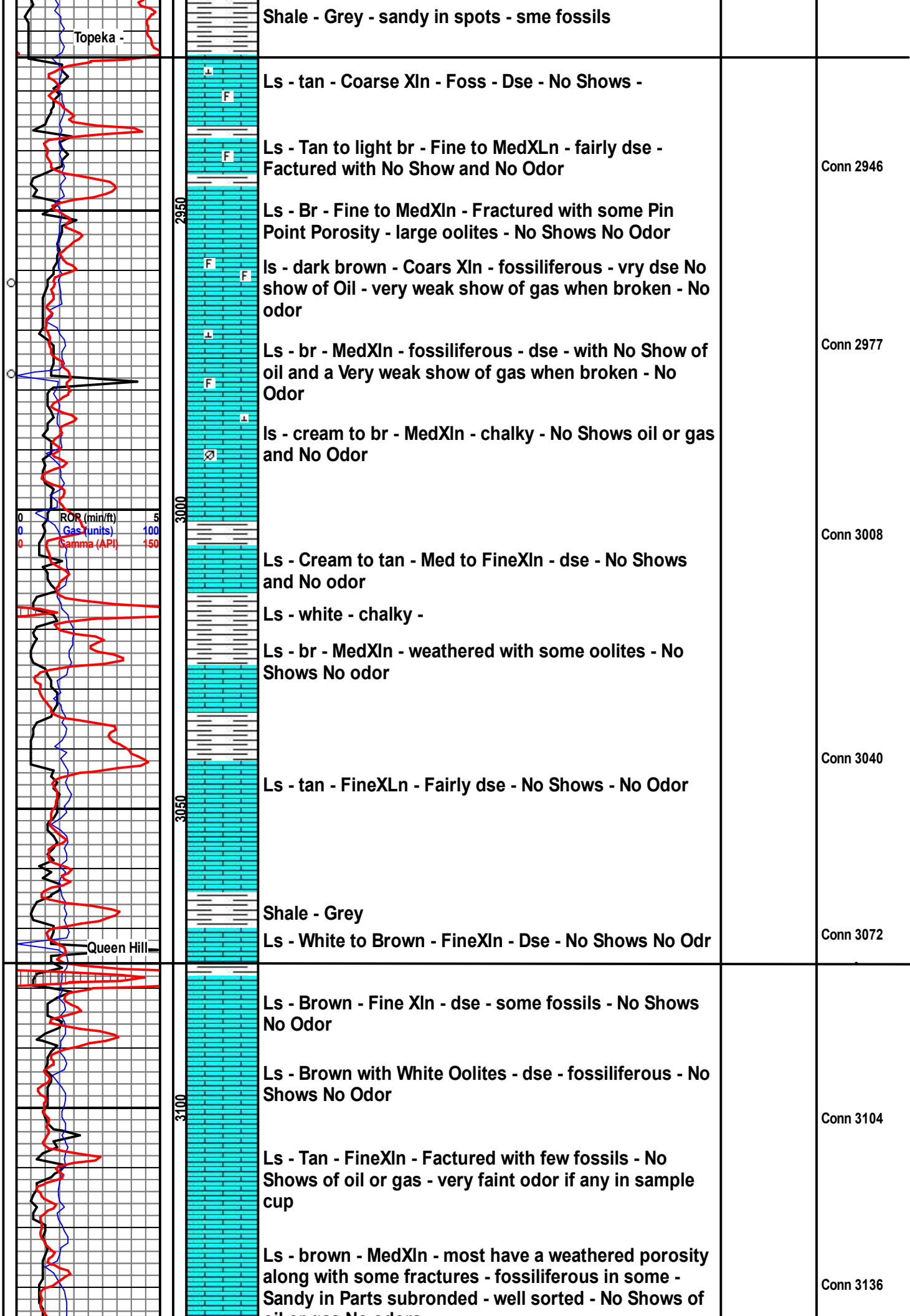
Conn 2882

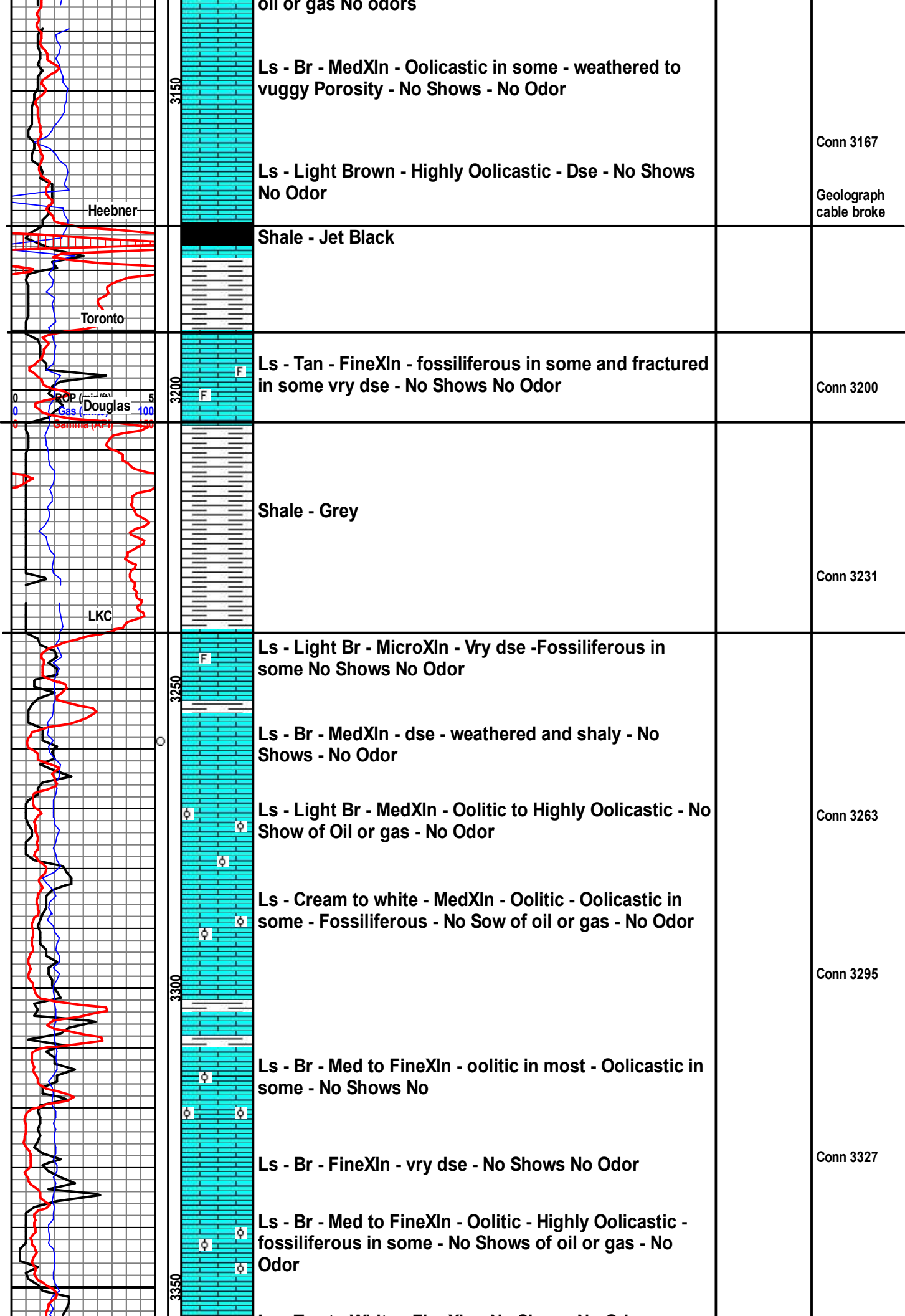
Conn 2915

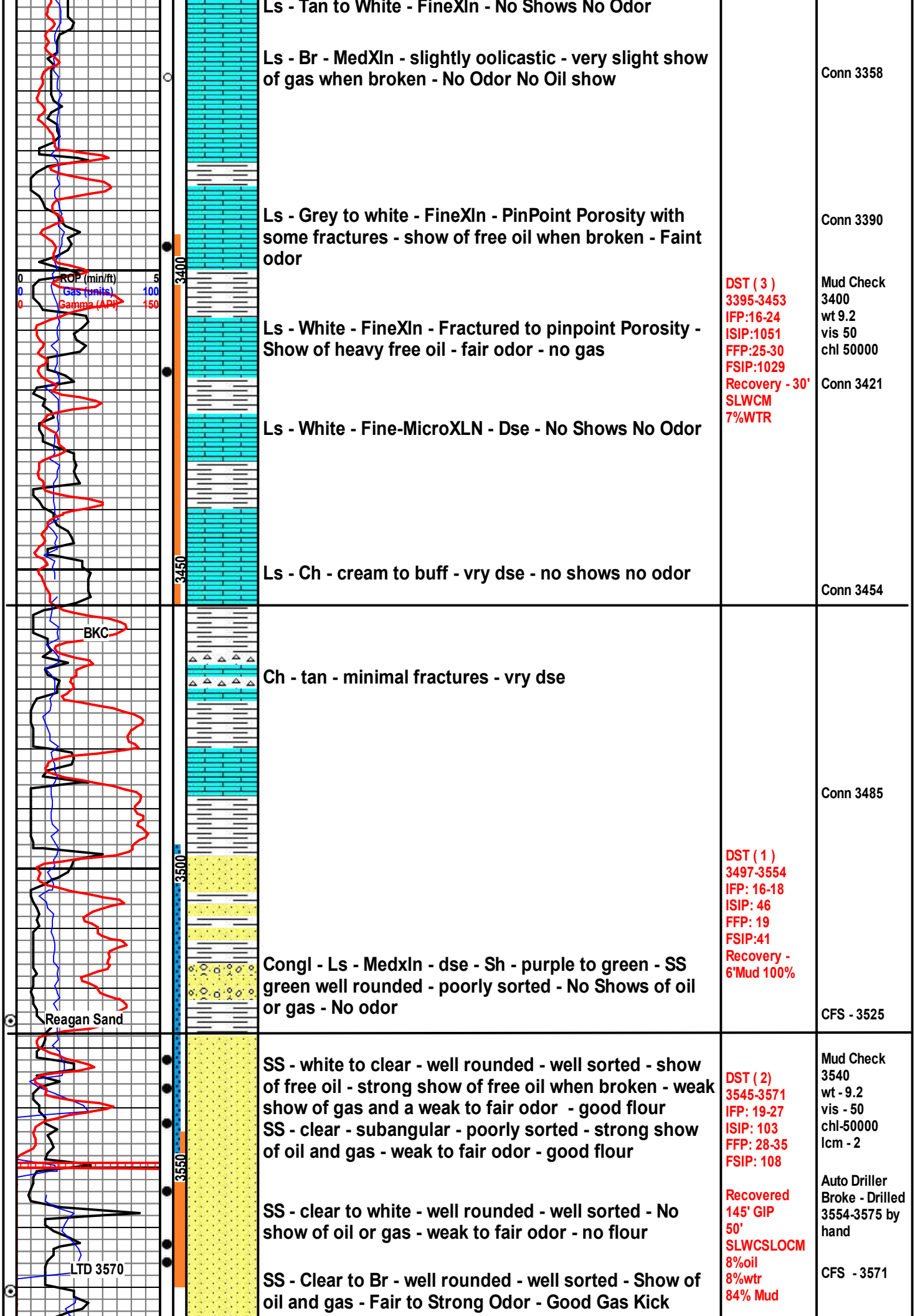
ROP (min/ft) 5
Gas (units) 100
Gamma (API) 150

Howard

Severy Shale







Ls - Tan to White - FineXln - No Shows No Odor

Ls - Br - MedXln - slightly oolitic - very slight show of gas when broken - No Odor No Oil show

Conn 3358

Ls - Grey to white - FineXln - PinPoint Porosity with some fractures - show of free oil when broken - Faint odor

Conn 3390

Ls - White - FineXln - Fractured to pinpoint Porosity - Show of heavy free oil - fair odor - no gas

DST (3)
3395-3453
IFP:16-24
ISIP:1051
FFP:25-30
FSIP:1029
Recovery - 30'
SLWCM
7%WTR

Mud Check
3400
wt 9.2
vis 50
chl 50000

Conn 3421

Ls - White - Fine-MicroXLN - Dse - No Shows No Odor

Ls - Ch - cream to buff - vry dse - no shows no odor

Conn 3454

BKC

Ch - tan - minimal fractures - vry dse

Conn 3485

DST (1)
3497-3554
IFP: 16-18
ISIP: 46
FFP: 19
FSIP:41
Recovery - 6'
Mud 100%

Congl - Ls - Medxln - dse - Sh - purple to green - SS green well rounded - poorly sorted - No Shows of oil or gas - No odor

CFS - 3525

Reagan Sand

SS - white to clear - well rounded - well sorted - show of free oil - strong show of free oil when broken - weak show of gas and a weak to fair odor - good flour
SS - clear - subangular - poorly sorted - strong show of oil and gas - weak to fair odor - good flour

DST (2)
3545-3571
IFP: 19-27
ISIP: 103
FFP: 28-35
FSIP: 108

Mud Check
3540
wt - 9.2
vis - 50
chl-50000
lcm - 2

SS - clear to white - well rounded - well sorted - No show of oil or gas - weak to fair odor - no flour

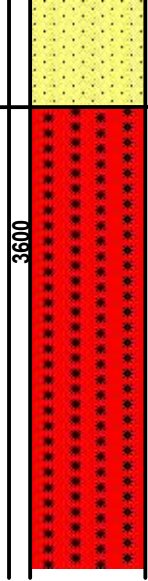
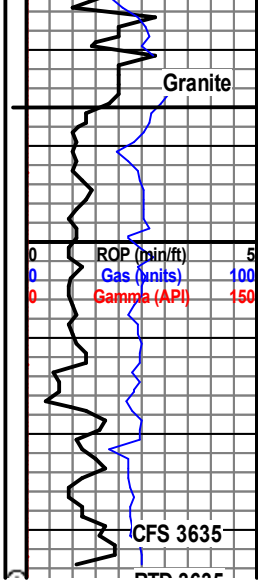
Auto Driller Broke - Drilled 3554-3575 by hand

LTD 3570

SS - Clear to Br - well rounded - well sorted - Show of oil and gas - Fair to Strong Odor - Good Gas Kick

Recovered
145' GIP
50'
SLWCSLOCM
8%oil
8%wtr
84% Mud

CFS - 3571



Sand - White - poor consolidation -

Conn 3658

Conn - 3612

CFS 3635