

| | | | | | |
|------------------------|------------------|------------------------|-----------------------|-----------|----------------------|
| Company | KNIGHTON OIL | County | PRATT | State | KANSAS |
| Well | RANDLE #2 | Field | | | |
| Location: | | AP#: | SW-NE-SW | | |
| Field | | Permanent Datum | GROUND LEVEL | Elevation | GAMMA-RAY NEUTRON |
| County | PRATT | Log Measured From | SEC 5 TWP 2SS RGE 14W | K.B. 2022 | |
| State | KANSAS | Drilling Measured From | KELLY BUSHING | D.F. 2013 | |
| Date | | | | GL 2013 | |
| Run Number | ONE | | | | |
| Depth Driller | 3897 | | | | |
| Bottom Logger | 3812 | | | | |
| Bottom Logger Interval | 3812 | | | | |
| Open Hole Size | 2100 | | | | |
| Type Fluid | WATER | | | | |
| Density / Viscosity | | | | | |
| Max Recorded Temp | | | | | |
| Estimated Cement Top | 2850 | | | | |
| Time Well Ready | | | | | |
| Equipment Number | PT 98 | | | | |
| Time Logger on Bottom | 1415 | | | | |
| Recorded By | JERELAY SPANGLER | | | | |
| Witnessed By | MIR KENNY WERNER | | | | |
| Run Number | ONE | From | 00 | To | 00 |
| BI# | 12.25 | Size | 3697 | Weight | |
| TWO | 7.875 | From | 290 | To | 290 |
| Size | 8.5/8 | WairF | 23# | Top | 00 |
| Casing Record | | Surface String | 14# | Bottom | 230 |
| Prod. String | | Production String | | | 3637 |

<<< Fold Here >>>

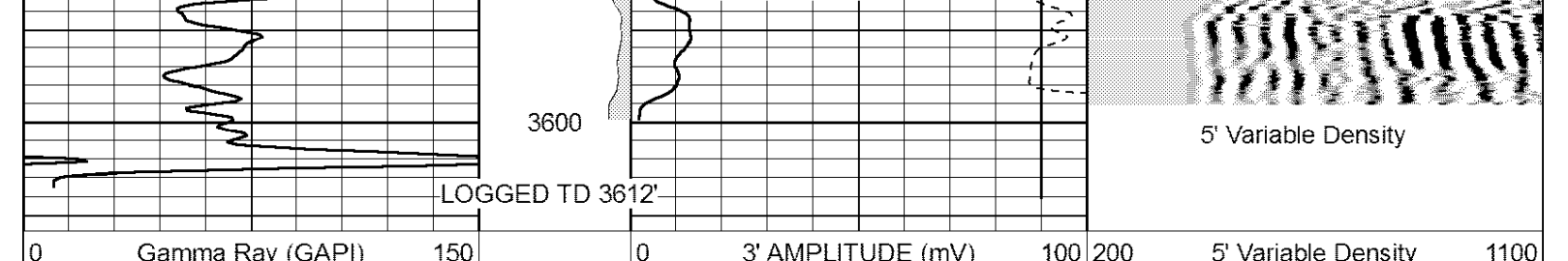
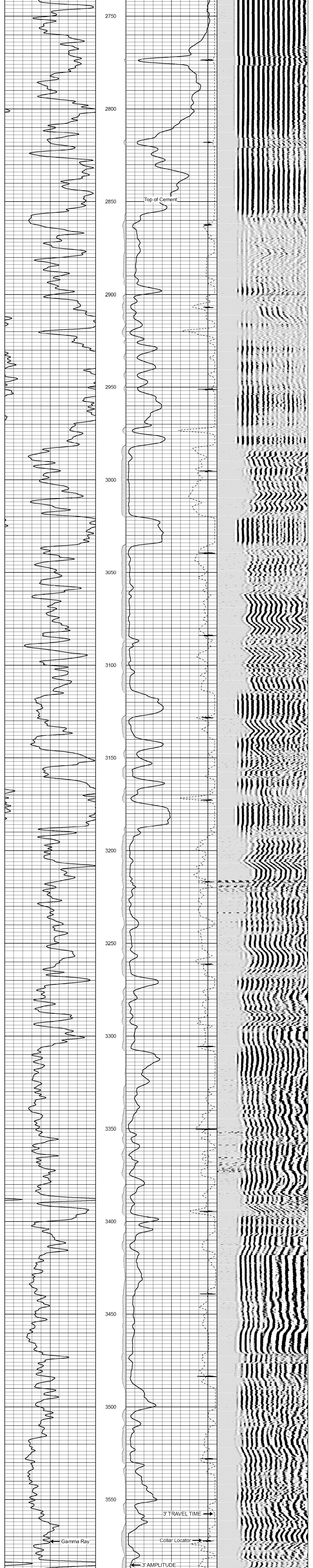
All interpretations are opinions based on inferences from electrical or other measurements and we cannot and do not guarantee the accuracy or correctness of any interpretation, and we shall not, except in the case of gross or willful negligence on our part, be liable or responsible for any loss, costs, damages, or expenses incurred or sustained by anyone resulting from any interpretation made by any of our officers, agents or employees. These interpretations are also subject to our general terms and conditions set out in our current Price Schedule.

Comments

THANKS FOR USING PERF-TECH WIRELINE
785-623-3699
BYERS KS,
1 NORTH, 1 WEST, 1/2 NORTH, EAST INTO

Perf-Tech Wireline Services **MAIN PASS**

Database File: 05101608.db
Dataset Pathname: pass4
Presentation Format: 3x5
Dataset Creation: Tue May 10 14:28:34 2016 by Log SCH 120126
Charted by: Depth in Feet scaled 1:240



Perf-Tech Wireline Services **REPEAT SECTION**

Database File: 05101608.db
Dataset Pathname: pass3
Presentation Format: 3x5
Dataset Creation: Tue May 10 14:22:36 2016 by Log SCH 120126
Charted by: Depth in Feet scaled 1:240

