



**WIRELINE
SERVICES, INC.**
CHANUTE, KANSAS

**GAMMA RAY
NEUTRON
COMPLETION LOG**

Company TAILWATER, INC.
Well NORTH KEMPNIICH #7-IWU
Field GARNETT SHOESTRING
County ANDERSON
State KANSAS

Company TAILWATER, INC.
Well NORTH KEMPNIICH #7-IWU
Field GARNETT SHOESTRING
County ANDERSON State KANSAS

Location: API # : 15-003-26231-00-00
1185' FNL & 2345' FWL
SE SE NE NW
SEC 22 TWP 20S RGE 20E
Permanent Datum G.L. Elevation 952'EST.
Log Measured From G.L. D.F.
Drilling Measured From G.L. 952'EST.

Date	4-8-15		
Run Number	1-NEWWELL		
Depth Driller	645'		
Depth Logger	633.3'		
Top Log Interval	0		
Bottom Logged Interval	633.3'		
Fluid Level	FULL		
Type Fluid	WATER		
Production Casing	2 7/8" @ 640.5'	7"	@ 21.6'
Max. Recorded Temp.			
Estimated Cement Top			
Calculated Cement Top			
Amount & Type Cement			
Amount & Type Admix			
Drilling Contractor	EVANS ENERGY		
Equipment Number	103		
Location			
Recorded By	SOLOMON, B.		
Witnessed By	HUTCHINSON, D.		

<<< Fold Here >>>

All interpretations are opinions based on inferences from electrical or other measurements and we cannot and do not guarantee the accuracy or correctness of any interpretation, and we shall not, except in the case of gross or willful negligence on our part, be liable or responsible for any loss, costs, damages, or expenses incurred or sustained by anyone resulting from any interpretation made by any of our officers, agents or employees. These interpretations are also subject to our general terms and conditions set out in our current Price Schedule.

Comments

THANK YOU

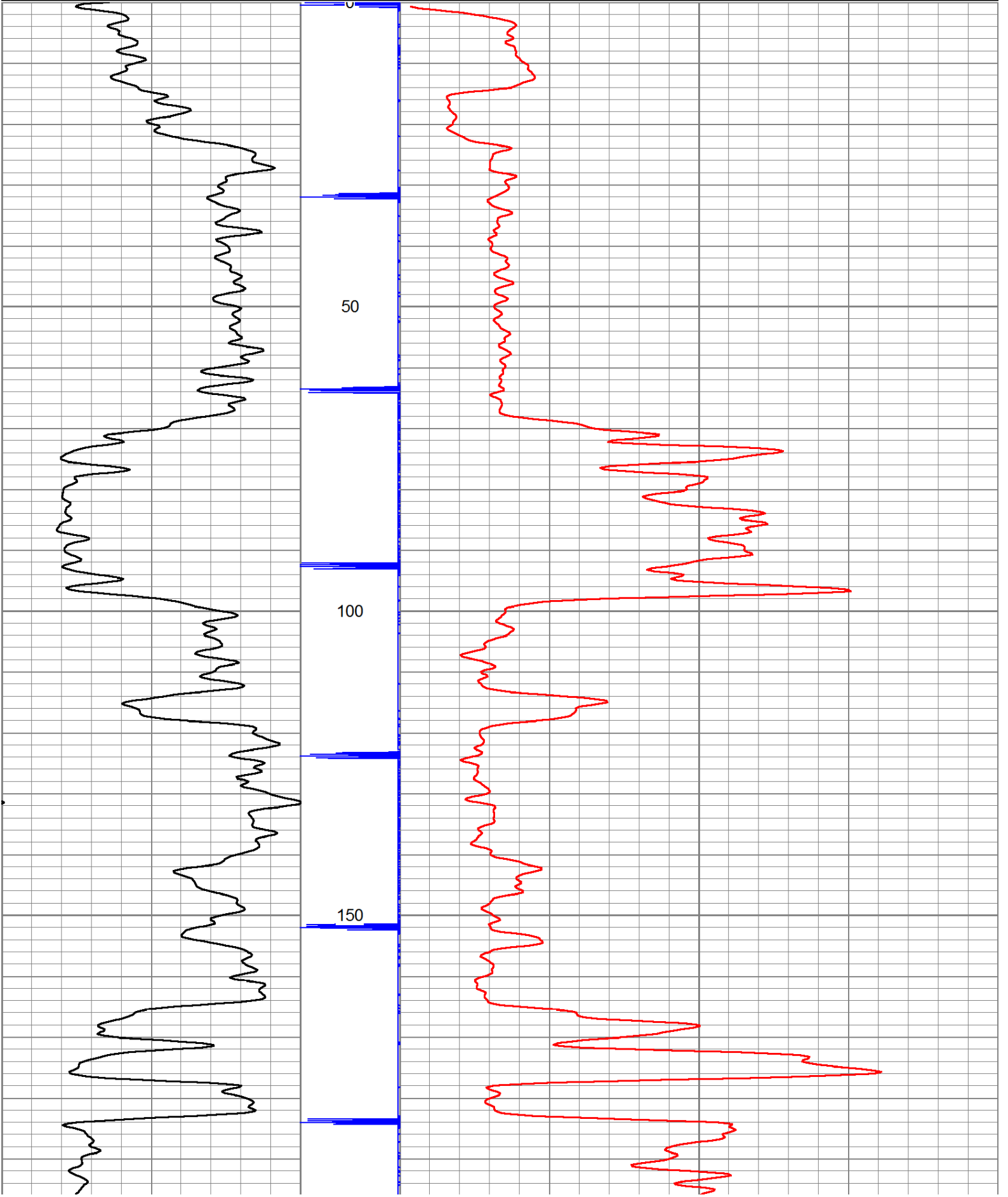
Sensor	Offset (ft)	Schematic	Description	Len (ft)	OD (in)	Wt (lb)

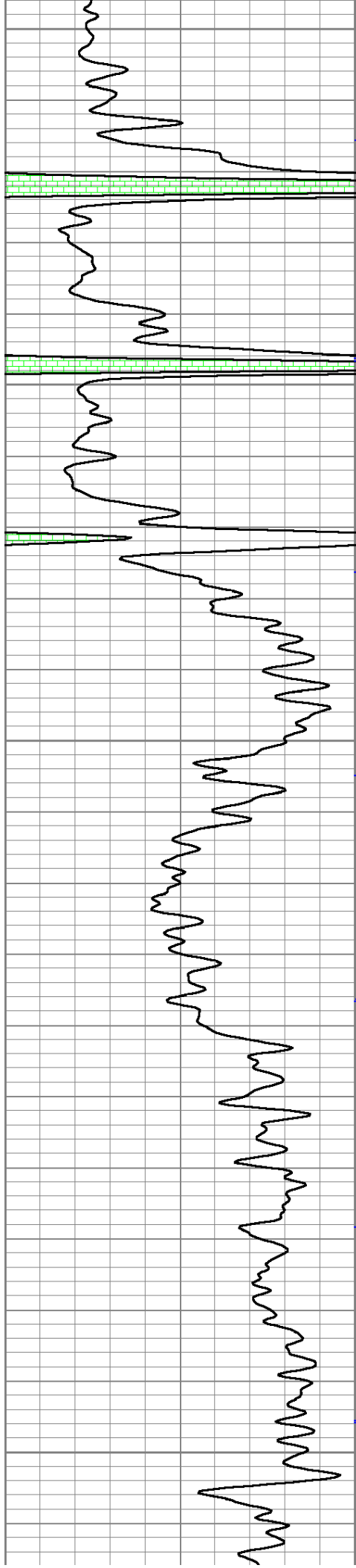
GR	7.59		GR-TITAN_169 (TIT169_001) Titan 1 11/16" Gamma Ray	4.75	1.69	20.00
CCL	5.05		CCL-TITAN_169 (TIT169) Titan 1 11/16" Logging CCL	1.83	1.69	7.50
NEU	0.63		NEU-TITAN (TIT801) TITAN 1 11/16" Neutron	4.33	1.69	25.00

Dataset: north kempnich #7-iwu.db: field/well/run1/pass2
 Total Length: 10.92 ft
 Total Weight: 52.50 lb
 O.D.: 1.69 in

Database File: e:\north kempnich #7-iwu.db
 Dataset Pathname: pass2
 Presentation Format: gr-n-ccl

150	gr	300	3	CCLJ.05	100	NEU (cps)	1700
0	GR	150					





200

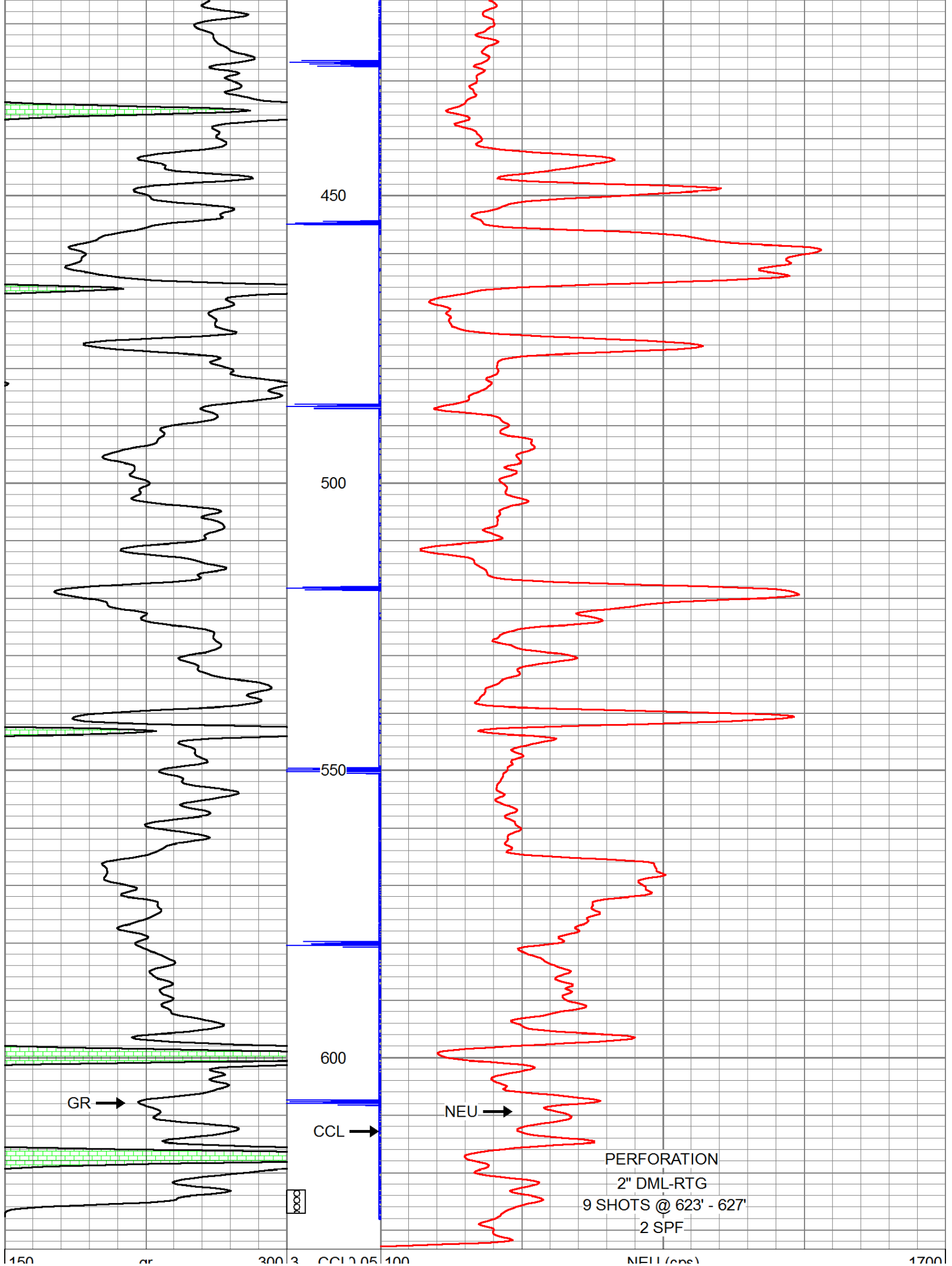
250

300

350

400





450

500

550

600

GR →

CCL →

NEU →

PERFORATION
 2" DML-RTG
 9 SHOTS @ 623' - 627'
 2 SPF

150	gr	500	5	COLE.03	100	NES (eps)	1700
0	GR	150					



Company	TAILWATER, INC.
Well	NORTH KEMPNIICH #7-IWU
Field	GARNETT SHOESTRING
County	ANDERSON SEC. 22 TWP. 20S RGE. 20E
State	KANSAS
Date	4-8-15