



MICRO LOG

Company RL INVESTMENT, LLC.
Well PRATT "A" #2-35
Field HOXIE WEST
County SHERIDAN
State KANSAS

Company RL INVESTMENT, LLC.
Well PRATT "A" #2-35
Field HOXIE WEST
County SHERIDAN State KANSAS

Location: API #: 15-179-21444-0000
1700' FNL & 345' FWL
Permanent Datum GROUND LEVEL Elevation 2821
Log Measured From KELLY BUSHING 7' A.G.L
Drilling Measured From KELLY BUSHING
Elevation
K.B. 2828
D.F. 2826
G.L. 2821

Table with columns: Date, Run Number, Depth Driller, Depth Logger, Bottom Logged Interval, Top Log Interval, Casing Driller, Casing Logger, Bit Size, Type Fluid in Hole, Density / Viscosity, PH / Fluid Loss, Source of Sample, Rim @ Meas. Temp, Rmc @ Meas. Temp, Source of Rmf / Rmc, Rim @ BHT, Time Circulation Stopped, Time Logger on Bottom, Maximum Recorded Temperature, Equipment Number, Location, Recorded By, Witnessed By.

<<< Fold Here >>>

All interpretations are opinions based on inferences from electrical or other measurements and we cannot and do not guarantee the accuracy or correctness of any interpretation, and we shall not, except in the case of gross or willful negligence on our part, be liable or responsible for any loss, costs, damages, or expenses incurred or sustained by anyone resulting from any interpretation made by any of our officers, agents or employees. These interpretations are also subject to our general terms and conditions set out in our current Price Schedule.

Comments

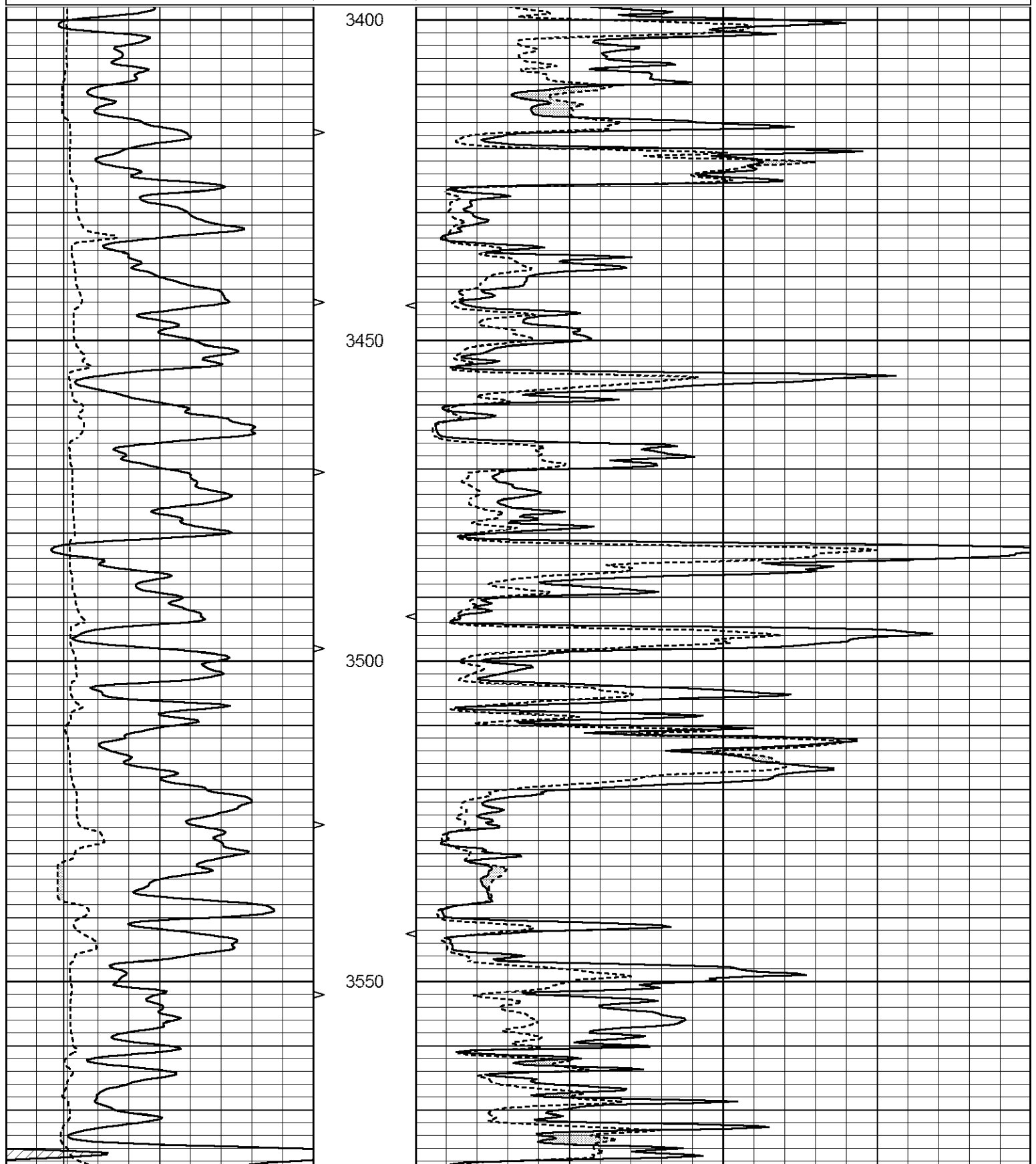
THANK YOU FOR USING ELI WIRELINE SERVICES, HAYS, KS. (785) 628-6395
DIRECTIONS
HOXIE, KS. - 2 SOUTH TO 30 RD. - 5 WEST TO 50 RD. - 1/2 SOUTH - EAST INTO

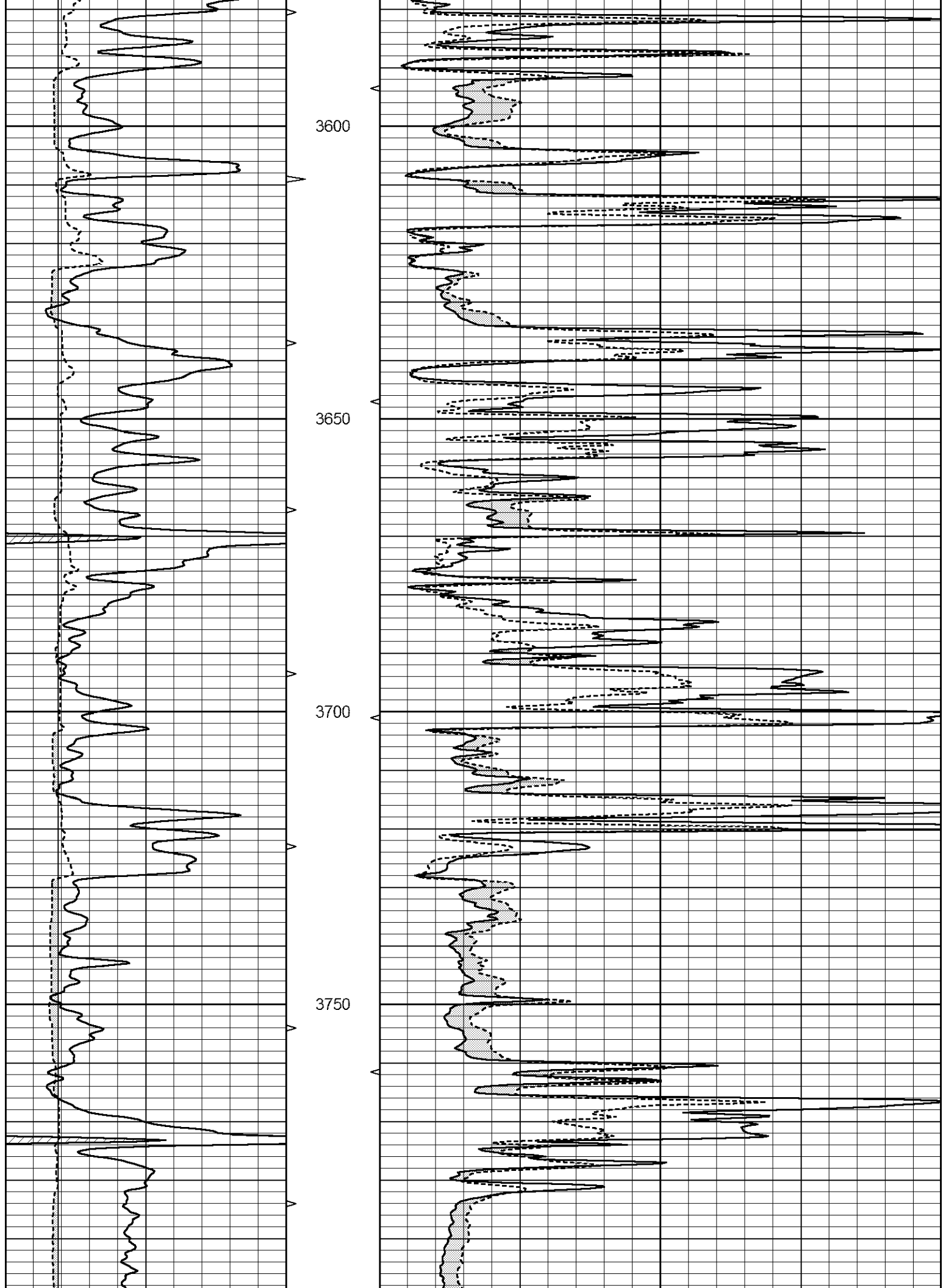


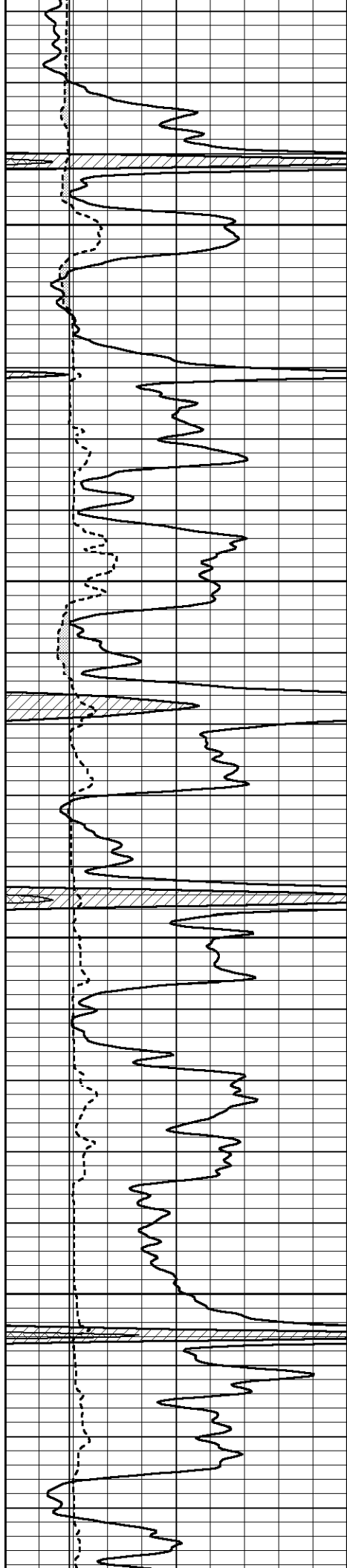
MAIN SECTION

Database File 2039ddn8.db
 Dataset Pathname pass6.1
 Presentation Format _micro
 Dataset Creation Sun Apr 01 19:19:58 2018
 Charted by Depth in Feet scaled 1:240

0	GAMMA RAY (GAPI)	150	ABHV	0	MEL1.5 (Ohm-m)	40
6	CALIPER (in)	16	10 (ft3)	0	MEL2.0 (Ohm-m)	40
			TBHV			
			0 (ft3)	10		





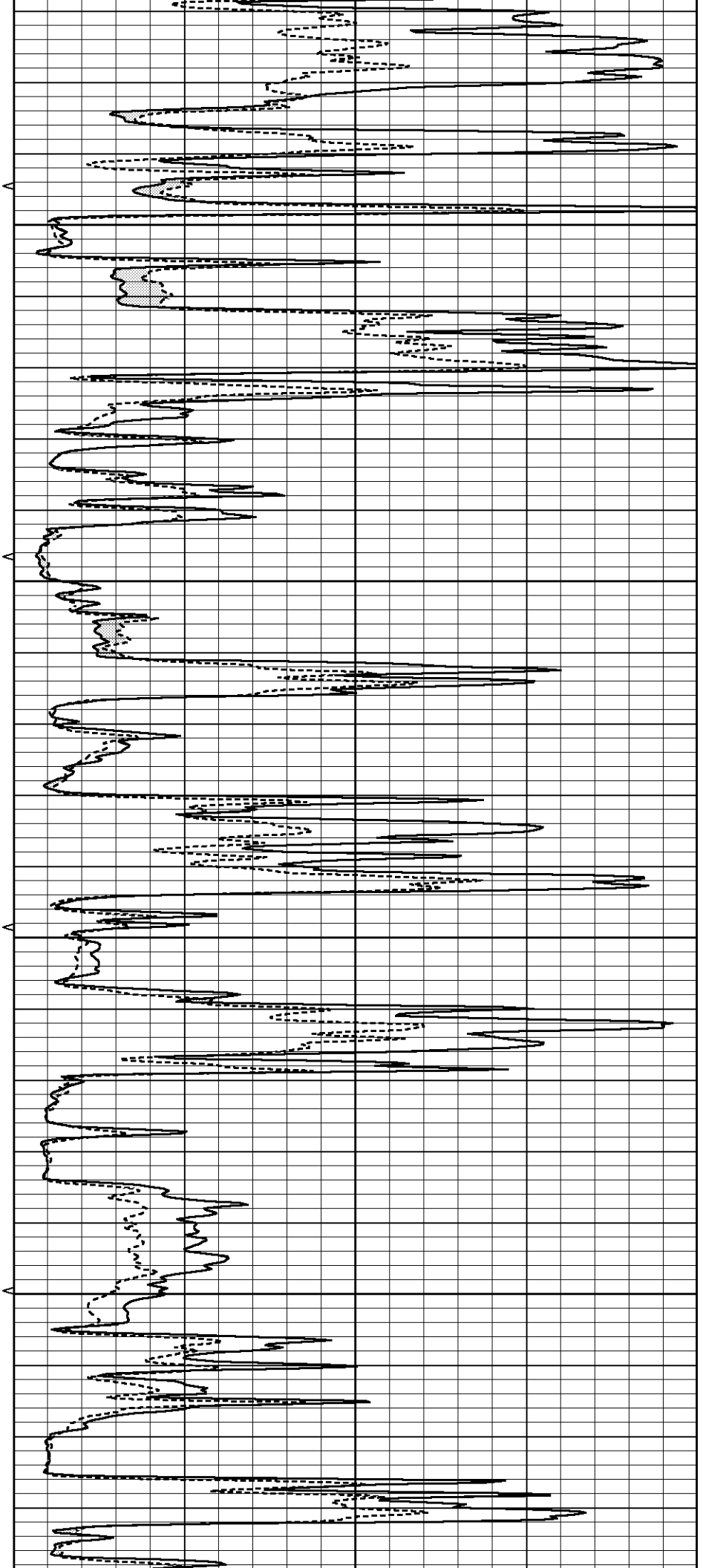


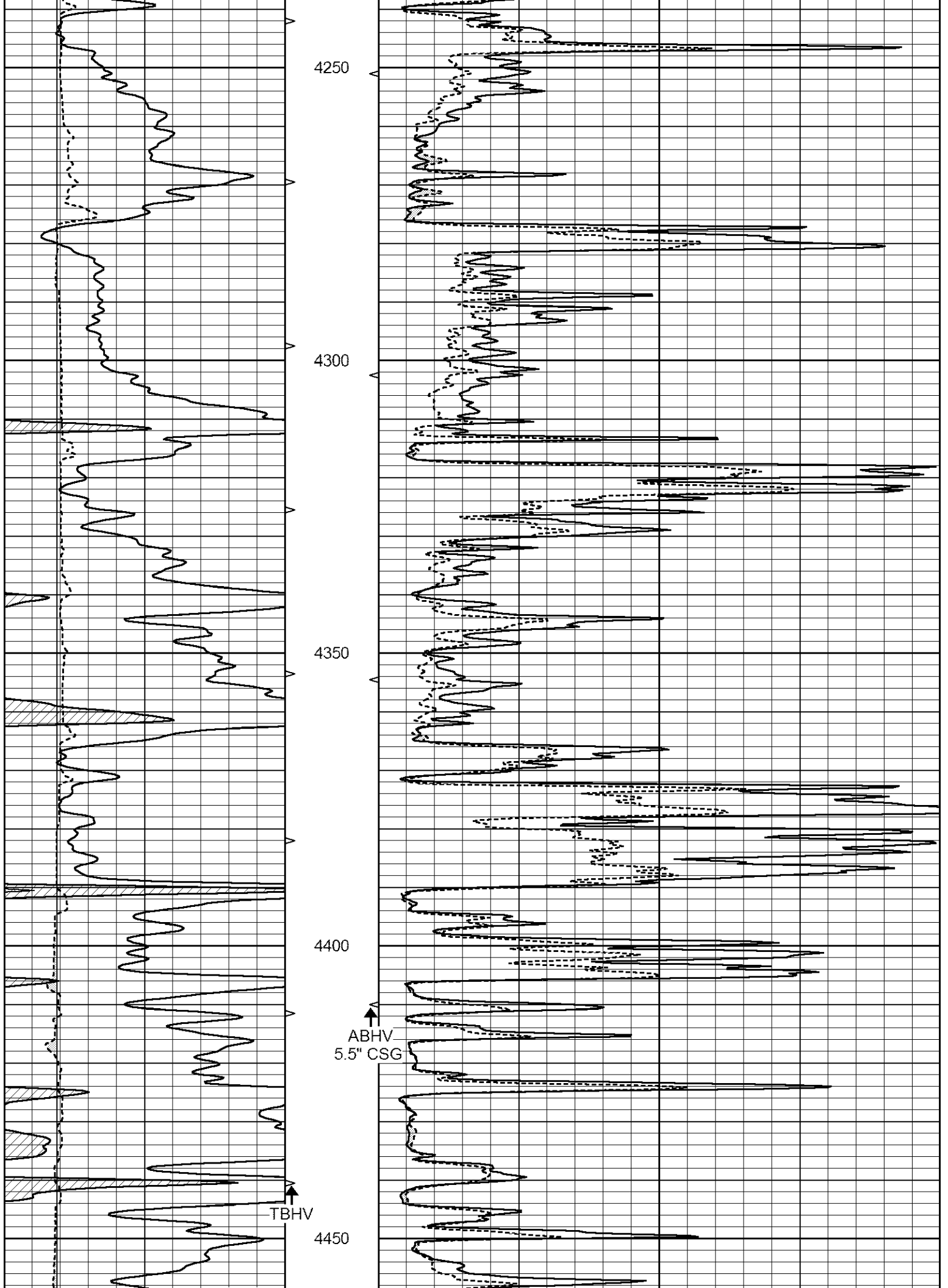
4050

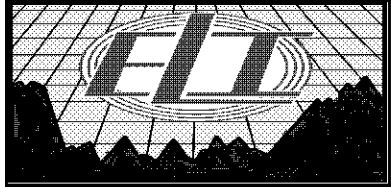
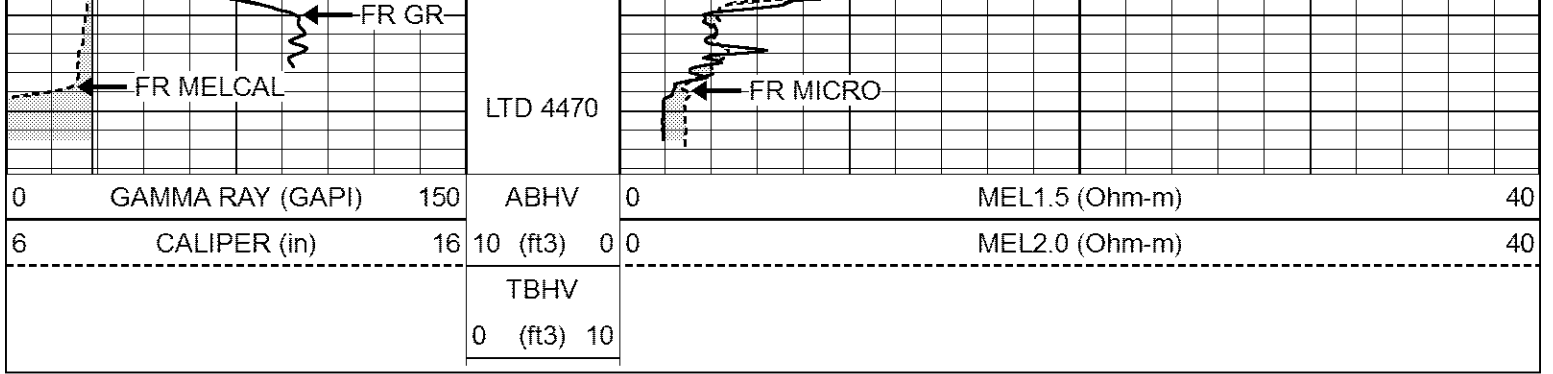
4100

4150

4200

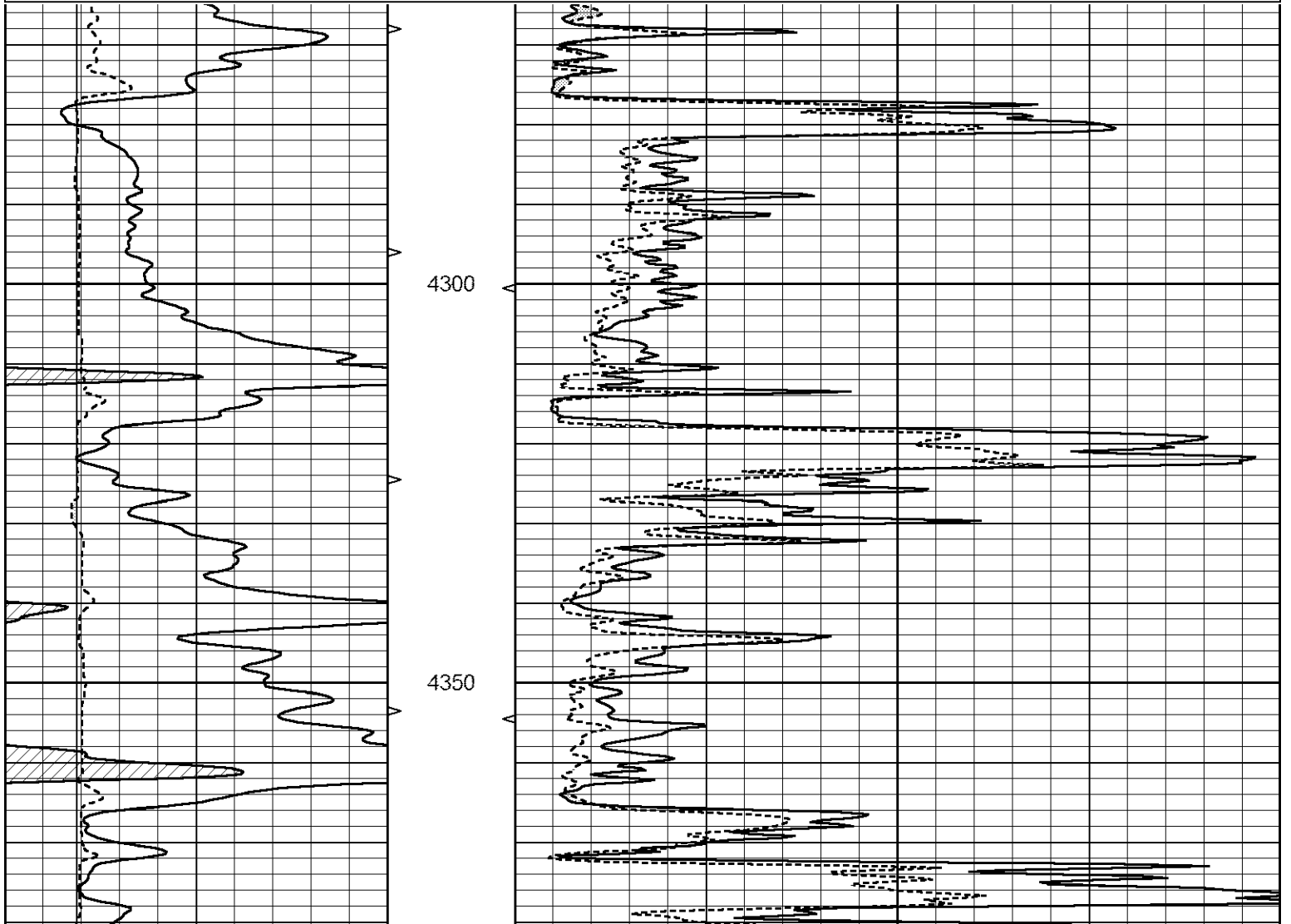
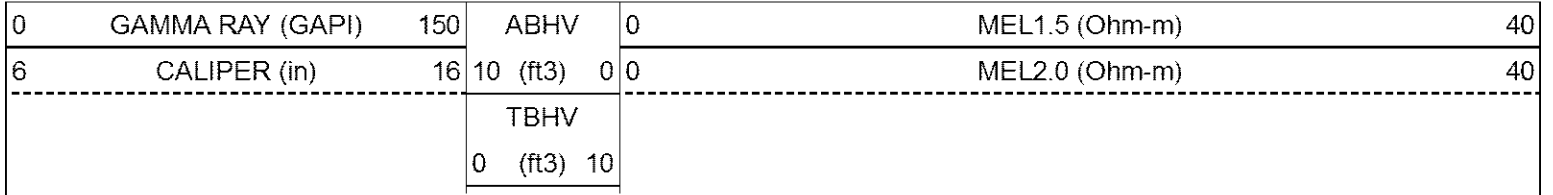


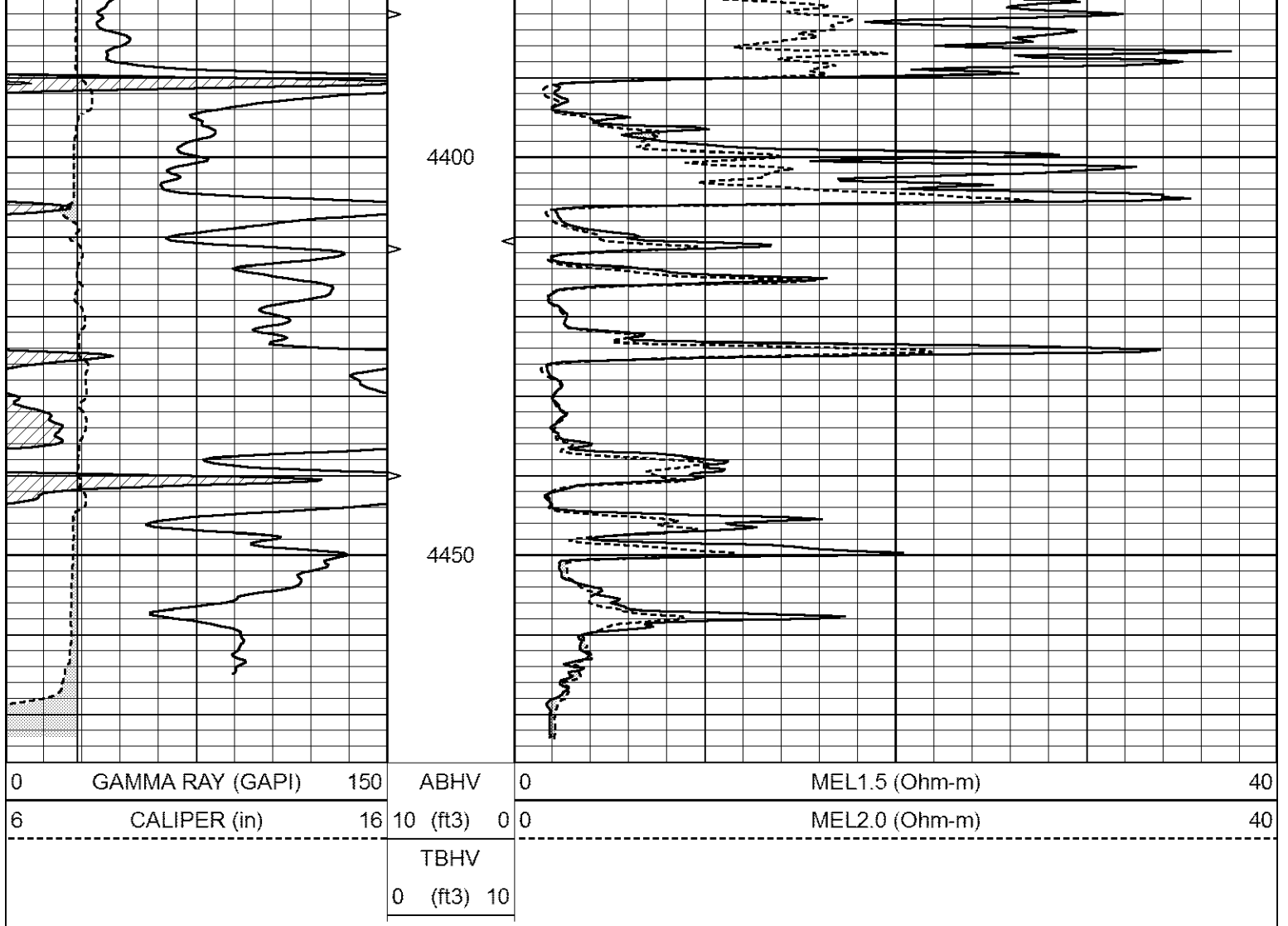




REPEAT SECTION

Database File 2039ddn8.db
 Dataset Pathname pass5.1
 Presentation Format _micro
 Dataset Creation Sun Apr 01 19:13:26 2018
 Charted by Depth in Feet scaled 1:240





Calibration Report

Database File 2039ddn8.db
 Dataset Pathname pass5.1
 Dataset Creation Sun Apr 01 19:13:26 2018

MICRO_USR Calibration Report

Serial Number:	070910	
Tool Model:	ProbeL	
Performed:	Sat Mar 31 18:03:44 2018	
Caliper Calibration:	Gain=7.336	Offset=3.217
References	Low Cal 8.000	High Cal 14.000
Readings	0.652	1.470
1.5" Calibration:	Gain=25.000	Offset=-0.067
References	Low Cal 0.000	High Cal 20.000
Readings	0.004	1.335
2" Calibration:	Gain=40.000	Offset=-0.679
References	Low Cal 0.000	High Cal 20.000
Readings	0.004	1.029

Microlog Calibration Report

Serial-Model:
Performed:

070910-ProbeL
(Not Performed)

	Readings			References			Results	
	Zero	Cal		Zero	Cal		m	b
Normal	0.0000	1.0000	V	0.0000	1.0000	Ohm-m	1.0000	0.0000
Inverse	0.0000	1.0000	V	0.0000	1.0000	Ohm-m	1.0000	0.0000
Caliper	0.0000	1.0000	V	0.0000	1.0000	in	1.0000	0.0000

Gamma Ray Calibration Report

Serial Number: 7
Tool Model: Probe1
Performed: Wed Jun 29 11:10:58 2016

Calibrator Value: 1.0 GAPI

Background Reading: 0.0 cps
Calibrator Reading: 1.0 cps

Sensitivity: 0.2700 GAPI/cps