



**COMPENSATED  
DENSITY/NEUTRON  
LOG**

Company RL INVESTMENT, LLC.  
Well PRATT "A" #2-35  
Field HOXIE WEST  
County SHERIDAN State KANSAS

Location: API #: 15-179-21444-0000  
1700' FNL & 345' FWL  
Permanent Datum GROUND LEVEL Elevation 2821  
Log Measured From KELLY BUSHING 7' A.G.L  
Drilling Measured From KELLY BUSHING  
Other Services DILMEL  
Elevation  
SEC 35 TWP 8S RGE 29W

Date	4/1/18
Run Number	ONE
Depth Driller	4470
Depth Logger	4470
Bottom Logged Interval	4446
Top Log Interval	3400
Casing Driller	8 5/8" @ 265
Casing Logger	263
Bit Size	7 7/8
Type Fluid in Hole	CHEMICAL MUD
Density / Viscosity	9.1/60
PH / Fluid Loss	10.5/7.6
Source of Sample	FLOWLINE
Rm @ Meas. Temp	.95 @ 82F
Rmt @ Meas. Temp	.71 @ 82F
Rmc @ Meas. Temp	1.14 @ 82F
Source of Rmf / Rmc	MEASUREMENT
Rm @ BHT	.64 @ 120F
Time Circulation Stopped	2 HOURS
Time Logger on Bottom	////
Maximum Recorded Temperature	120F
Equipment Number	3802
Location	HAYS, KANSAS
Recorded By	JASON CAPPELLUCCI
Witnessed By	RICHARD BELL

<<< Fold Here >>>

All interpretations are opinions based on inferences from electrical or other measurements and we cannot and do not guarantee the accuracy or correctness of any interpretation, and we shall not, except in the case of gross or willful negligence on our part, be liable or responsible for any loss, costs, damages, or expenses incurred or sustained by anyone resulting from any interpretation made by any of our officers, agents or employees. These interpretations are also subject to our general terms and conditions set out in our current Price Schedule.

Comments

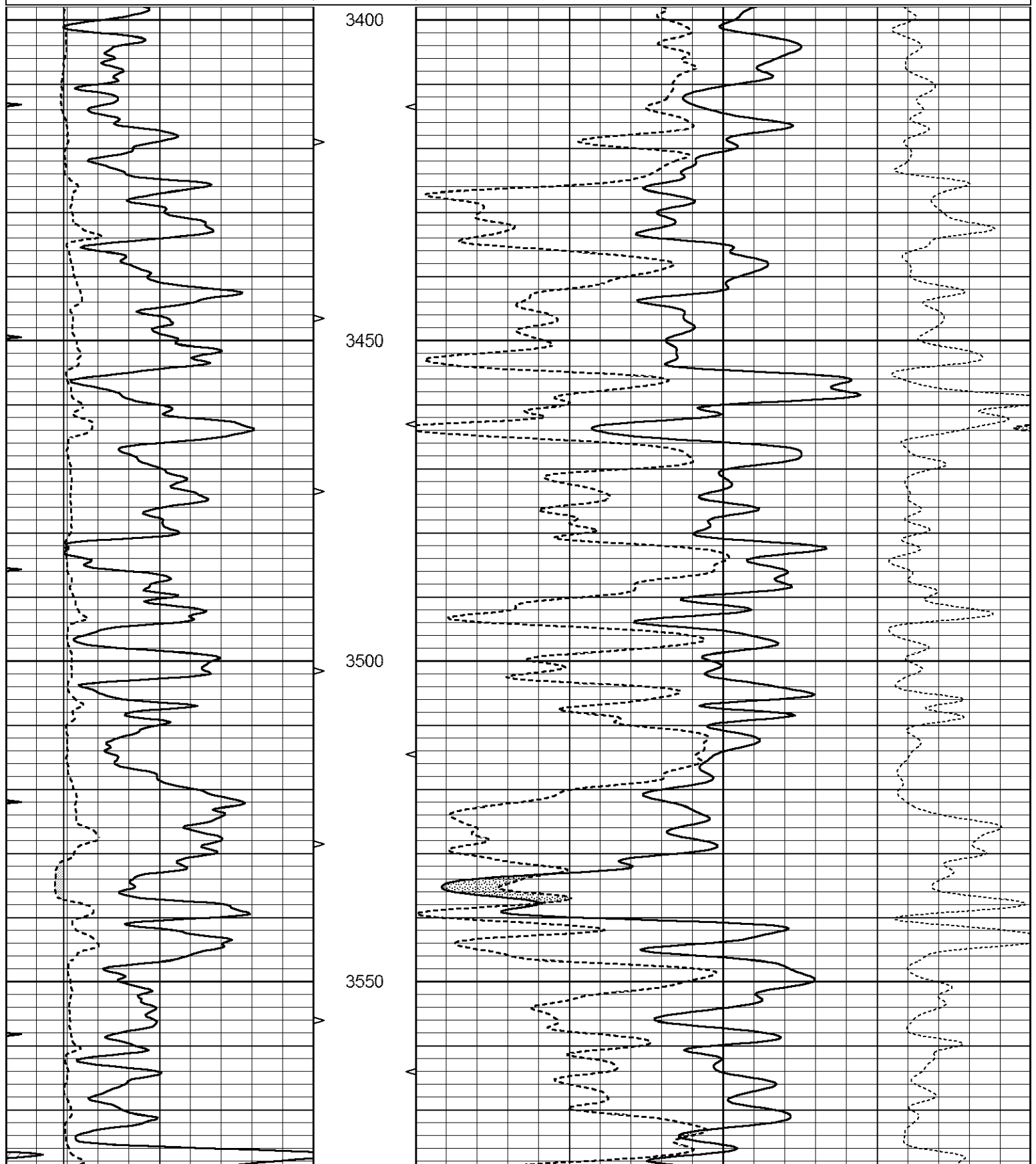
THANK YOU FOR USING ELI WIRELINE SERVICES, HAYS, KS. ( 785 ) 628-6395  
DIRECTIONS  
HOXIE, KS. - 2 SOUTH TO 30 RD. - 5 WEST TO 50 RD. - 1/2 SOUTH - EAST INTO

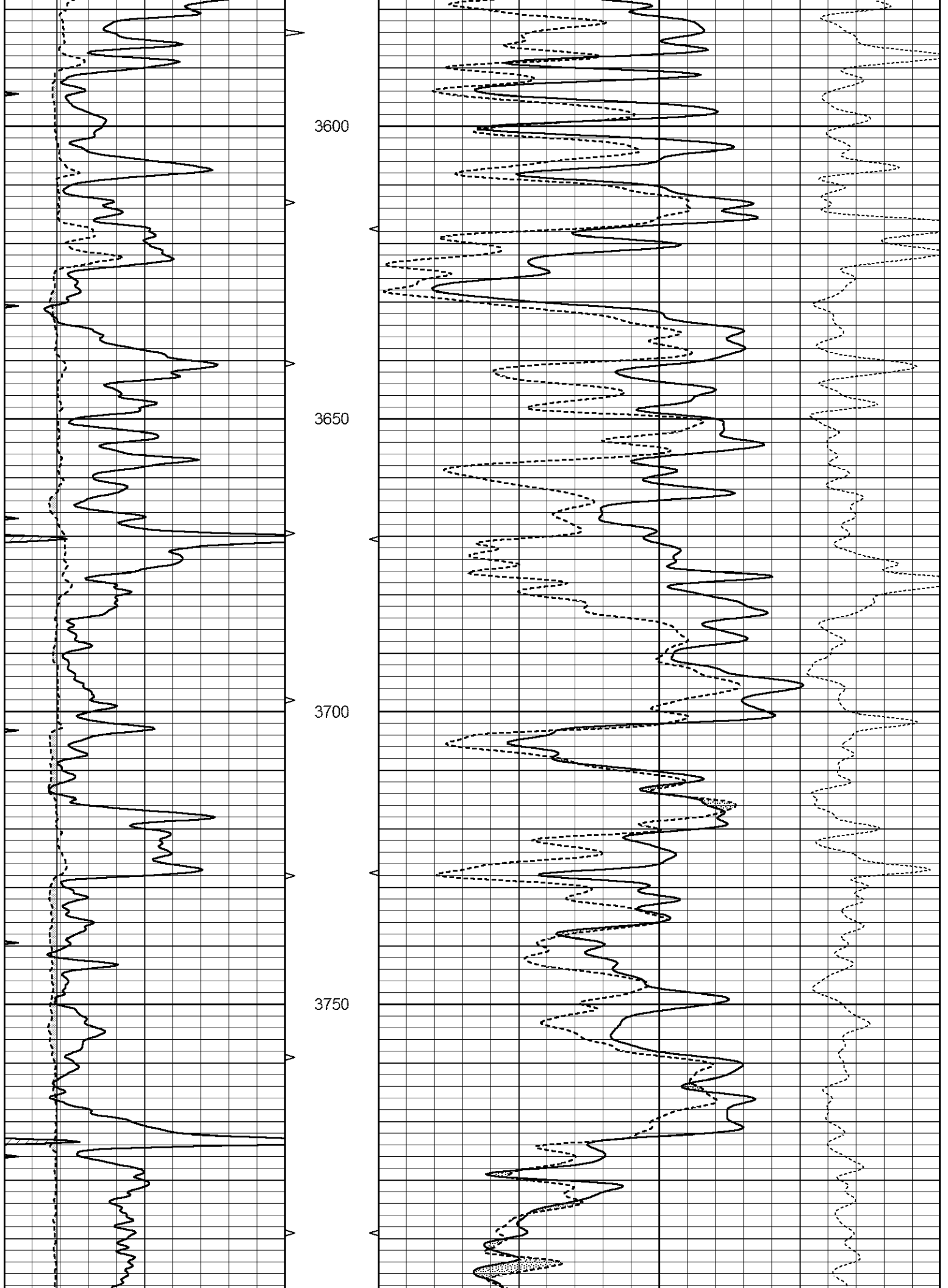


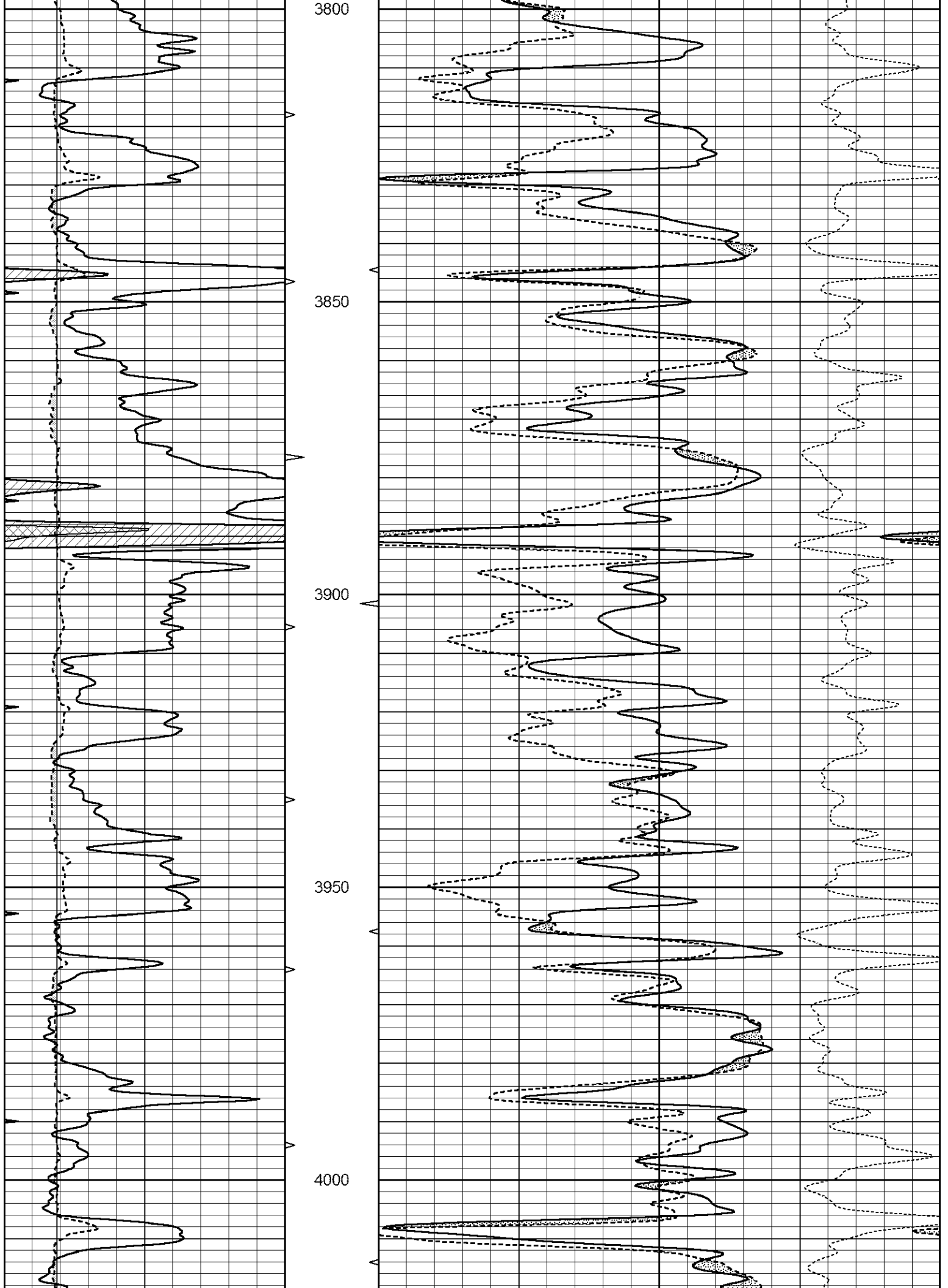
# MAIN SECTION

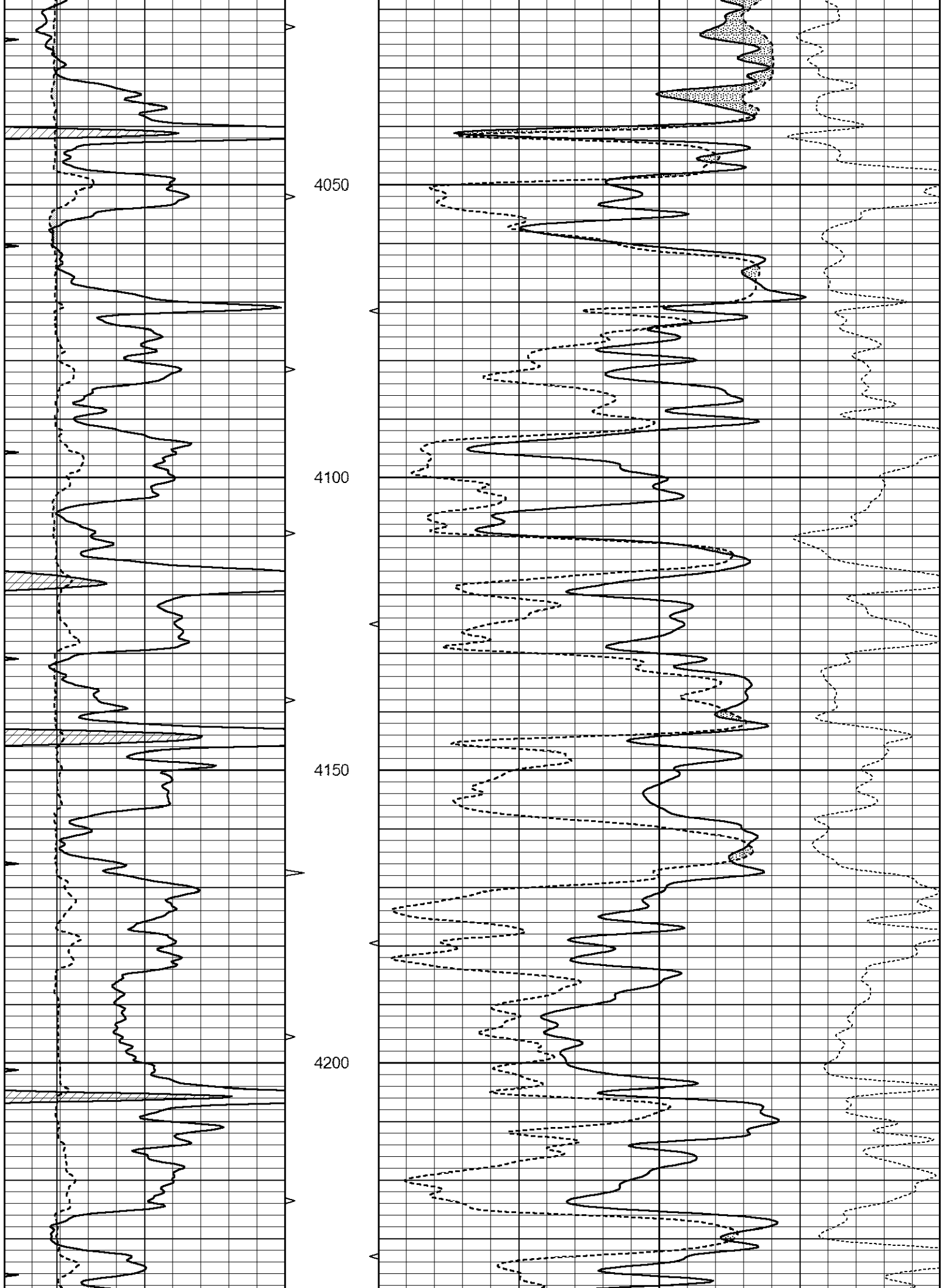
Database File 2039ddn8.db  
 Dataset Pathname pass3.1  
 Presentation Format \_den\_neu  
 Dataset Creation Sun Apr 01 17:42:14 2018  
 Charted by Depth in Feet scaled 1:240

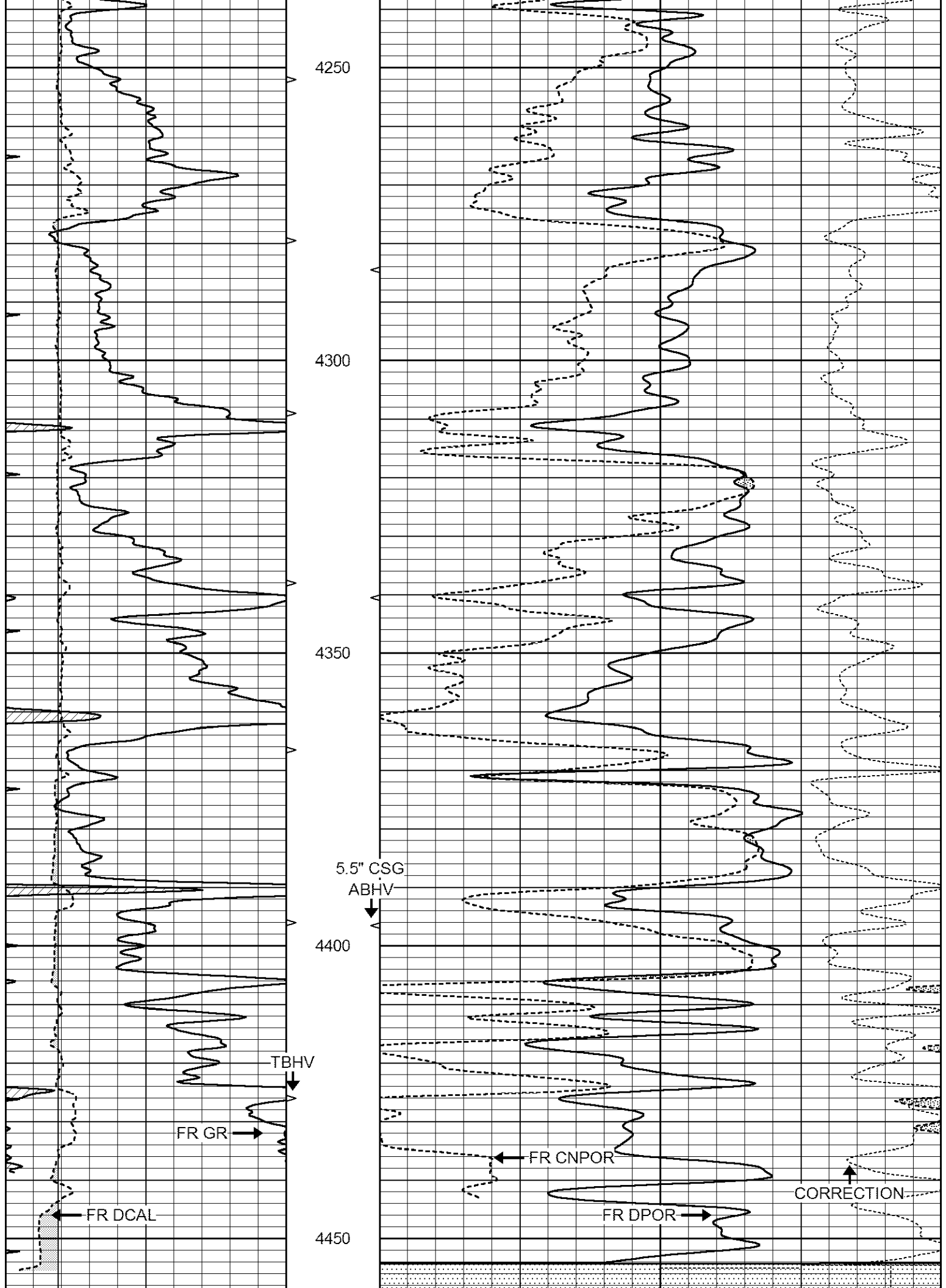
0	GAMMA RAY (GAPI)	150	AVTX	30	COMPENSATED DENSITY (pu)	-10	
6	CALIPER (in)	16	10 (ft3)	0	30	COMPENSATED NEUTRON (pu)	-10
0	MINMK	20	BVTX		-0.25	CORRECTION (g/cc)	0.25
			0 (ft3)	10			







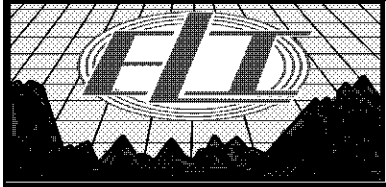




LTD 4470

2.71 LIMESTONE MATRIX

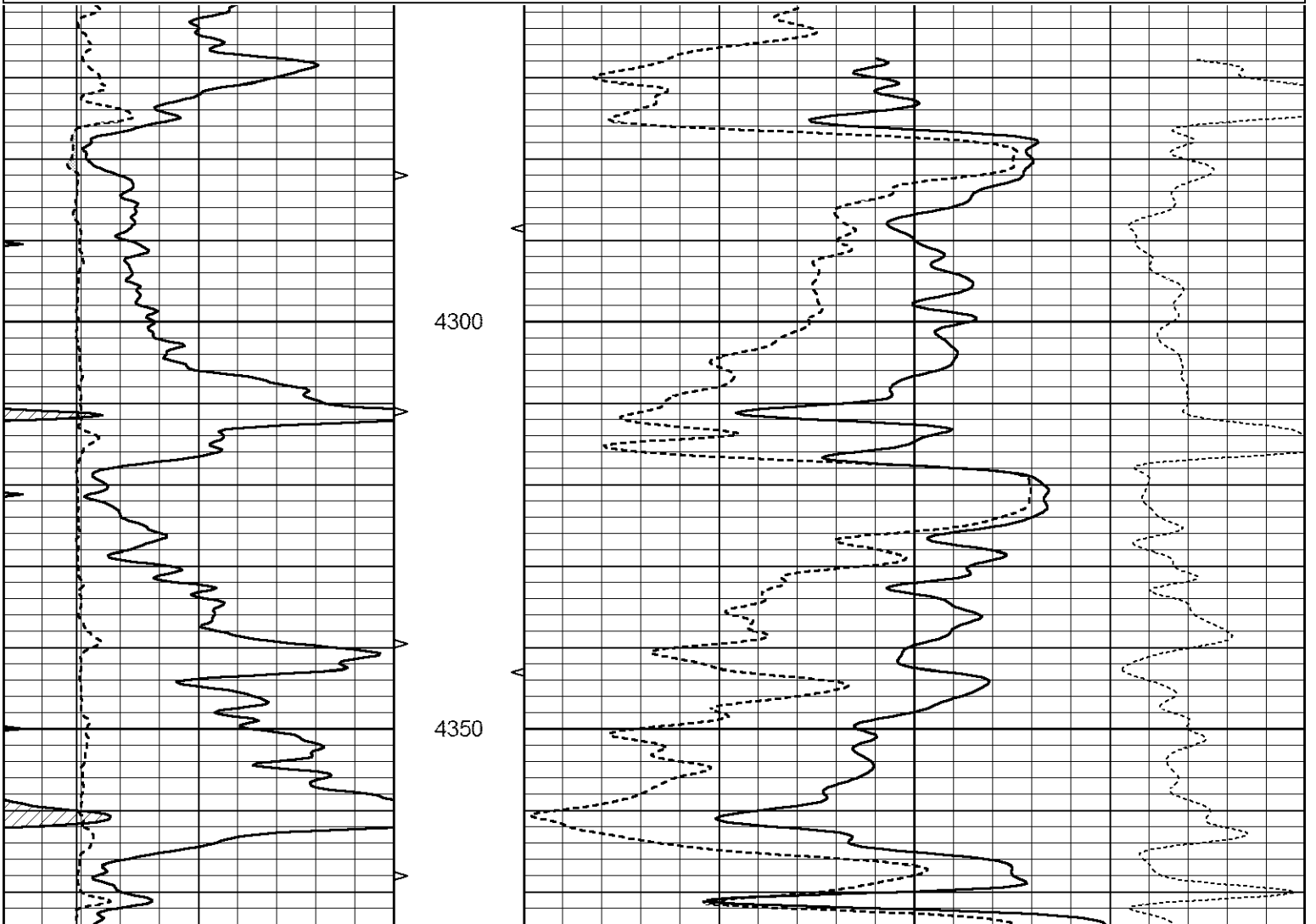
0	GAMMA RAY (GAPI)	150	AVTX	30	COMPENSATED DENSITY (pu)	-10
6	CALIPER (in)	16	10 (ft3) 0	30	COMPENSATED NEUTRON (pu)	-10
0	MINMK	20	BVTX		-0.25 CORRECTION (g/cc)	0.25
			0 (ft3) 10			

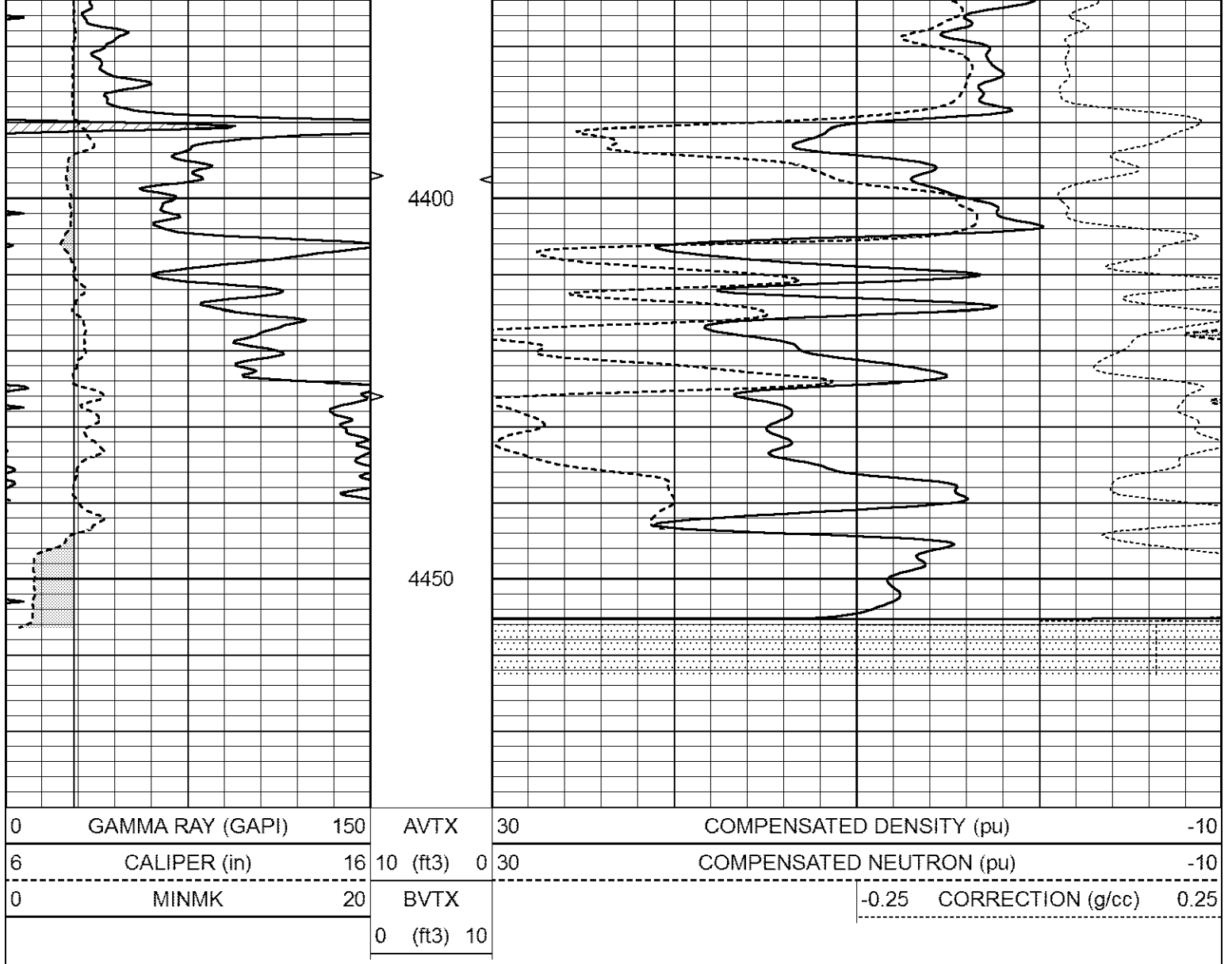


# REPEAT SECTION

Database File 2039ddn8.db  
 Dataset Pathname pass2.1  
 Presentation Format \_den\_neu  
 Dataset Creation Sun Apr 01 17:41:12 2018  
 Charted by Depth in Feet scaled 1:240

0	GAMMA RAY (GAPI)	150	AVTX	30	COMPENSATED DENSITY (pu)	-10
6	CALIPER (in)	16	10 (ft3) 0	30	COMPENSATED NEUTRON (pu)	-10
0	MINMK	20	BVTX		-0.25 CORRECTION (g/cc)	0.25
			0 (ft3) 10			





### Calibration Report

Database File      2039ddn8.db  
 Dataset Pathname    pass2.1  
 Dataset Creation    Sun Apr 01 17:41:12 2018

### Dual Induction Calibration Report

Serial-Model:                      FW1410-56-Probe  
 Surface Cal Performed:            Tue Jul 25 12:15:33 2017  
 Downhole Cal Performed:        Tue Jul 25 12:15:37 2017  
 After Survey Verification Performed:    Tue Jul 25 12:15:38 2017

#### Surface Calibration

Loop:	Readings			References			Results	
	Air	Loop	V	Air	Loop	mmho/m	m	b
Deep	0.008	0.765	V	1.000	400.000	mmho/m	527.061	-3.201
Medium	-0.056	0.761	V	1.000	464.000	mmho/m	567.187	32.510
Internal:	Zero	Cal		Zero	Cal		m	b
Deep	0.005	0.624	V	0.000	400.000	mmho/m	645.611	-3.034
Medium	0.012	0.721	V	0.000	464.000	mmho/m	653.591	-7.532

#### Downhole Calibration

Readings                      References                      Results

	Zero	Cal		Zero	Cal		m'	b'
Deep	-0.647	301.329	mmho/m	-0.780	336.378	mmho/m	1.117	-0.058
Medium	38.256	411.013	mmho/m	39.046	441.706	mmho/m	1.080	-2.280
LL3		7.471	V		2500.000	Ohm-m		
		0.001	V		20.000	Ohm-m		
		-7.085	V		5000.000	mmho-m		

After Survey Verification								
	Readings			Targets			Results	
	Zero	Cal		Zero	Cal		m'	b'
Deep	0.000	0.000	mmho/m	-0.647	301.329	mmho/m	1.000	0.000
Medium	0.000	0.000	mmho/m	38.256	411.013	mmho/m	1.000	0.000
LL3		0.000	Ohm-m		1500.000	Ohm-m		
		0.000	Ohm-m		20.000	Ohm-m		
		0.000	mmho-m		3745.000	mmho-m		

Litho Density Calibration Report  
Serial: 140704  
Model: V4\_10P  
Source Number: 74GBq-19

Master Calibration				Performed: Wed Feb 11 18:53:41 2015			
	Background	Aluminum		Magnesium			
Window 1	613.01	6027.40		27508.60	cps		
Window 2	48.21	1424.77		7132.66	cps		
Window 4	266.48	1373.19		5767.15	cps		
Window 5	622.07	10090.30		18937.90	cps		
Window 6	49.07	1682.84		3271.18	cps		
Window 8	298.04	3248.38		5980.58	cps		
Bulk Density	-	2.6020		1.6830	g/cc		
Pe	-	3.0000		2.5070	b/e		
LS Alpha:	: -1.8451	SS Alpha:	: -0.7542	LS CPE:		: 1.0882	
LS Beta:	: 138648.8473	SS Beta:	: 21960.9250	SS CPE:		: 1.5181	

Before Survey Background Counts Verification			Performed: Wed Dec 31 18:00:00 1969		
Window 1	0.00	cps			
Window 2	0.00	cps			
Window 4	0.00	cps			
Window 5	0.00	cps			
Window 6	0.00	cps			
Window 8	0.00	cps			

After Survey Background Counts Verification			Performed: Wed Dec 31 18:00:00 1969		
Window 1	0.00	cps			
Window 2	0.00	cps			
Window 4	0.00	cps			
Window 5	0.00	cps			
Window 6	0.00	cps			
Window 8	0.00	cps			

Lithodensity Caliper Calibration			Performed: Wed Feb 11 18:53:41 2015		
Results	Readings	References (in)			

<u>Low</u>	<u>High</u>	<u>Low</u>	<u>High</u>	<u>Gain</u>	<u>Offset</u>
1107.5	7124.1	8.0	15.0	0.0	6.3
Before Survey Caliper Verification		Performed:			
	Reference	Reading			
Caliper (in)	_____	_____			
After Survey Caliper Verification		Performed:			
	Reference	Reading			
Caliper (in)	_____	_____			
Compensated Neutron Calibration Report					
		Serial Number:	080621PMC		
		Tool Model:	NABORS		
PRE-SURVEY VERIFICATION					
Detector	Readings	Measured	Target		
Short Space	cps				
Long Space	cps	pu	pu		
POST-SURVEY VERIFICATION					
Detector	Readings	Measured	Target		
Short Space	cps				
Long Space	cps	pu	pu		
Gamma Ray Calibration Report					
Serial Number:		070558			
Tool Model:		Probe1			
Performed:		Tue Jul 25 12:16:33 2017			
Calibrator Value:		1.0	GAPI		
Background Reading:		0.0	cps		
Calibrator Reading:		1.0	cps		
Sensitivity:		0.4000	GAPI/cps		