

MICRO LOG

Company TRIPLE CROWN OPERATING, LLC.
Well WONDERLAND #1-9
Field
County NESS State KANSAS

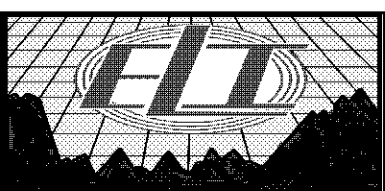
Location: API #: 15-135-25999-00-00
2510' FSL & 1750' FWL
Permanent Datum GROUND LEVEL Elevation 2240
Log Measured From KELLY BUSHING 5' A.G.L
Drilling Measured From KELLY BUSHING
Elevation
K.B. 2245
D.F. 2243
G.L. 2240

Table with 2 columns: Log Parameter (e.g., Date, Run Number, Depth Driller) and Value (e.g., 4/12/18, TWO, 4500).

<<< Fold Here >>>

All interpretations are opinions based on inferences from electrical or other measurements and we cannot and do not guarantee the accuracy or correctness of any interpretation...

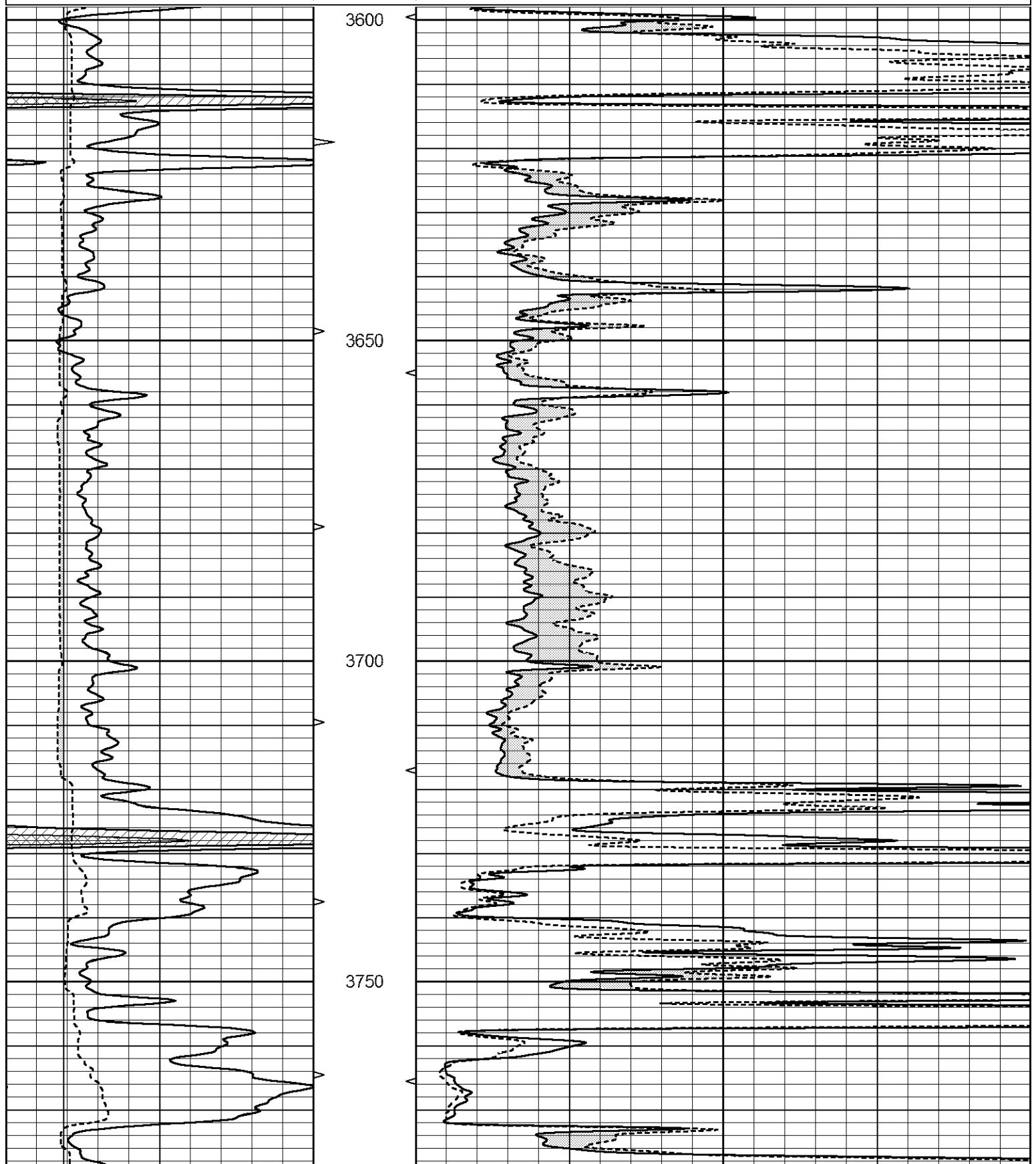
Comments
THANK YOU FOR USING ELI WIRELINE SERVICES, HAYS, KS. (785) 628-6395
DIRECTIONS
BAZINE, KS. - 3 WEST TO AA RD. - 8 SOUTH TO RD 50 - 1 WEST TO RD. Z
1/2 SOUTH - EAST INTO

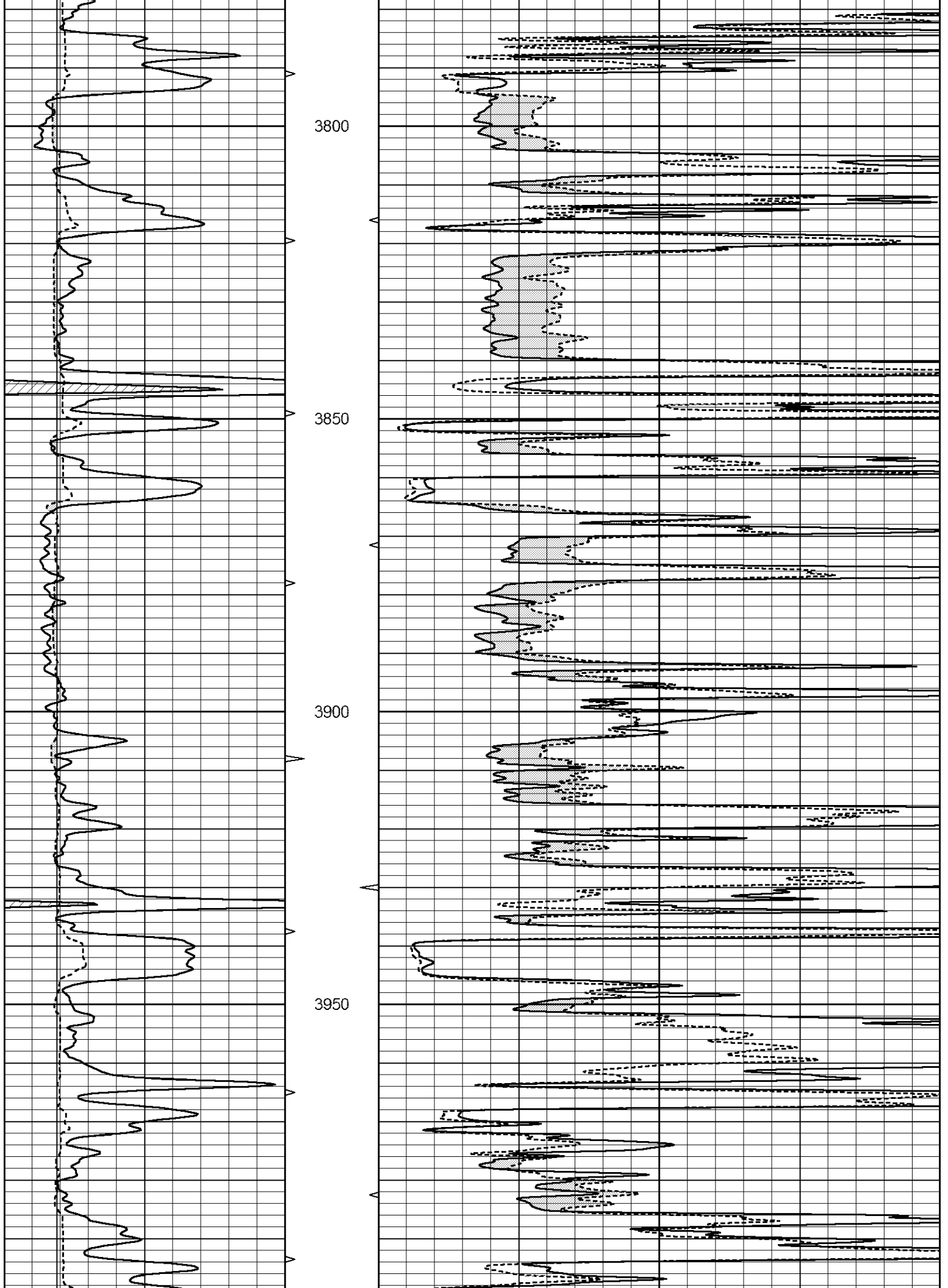


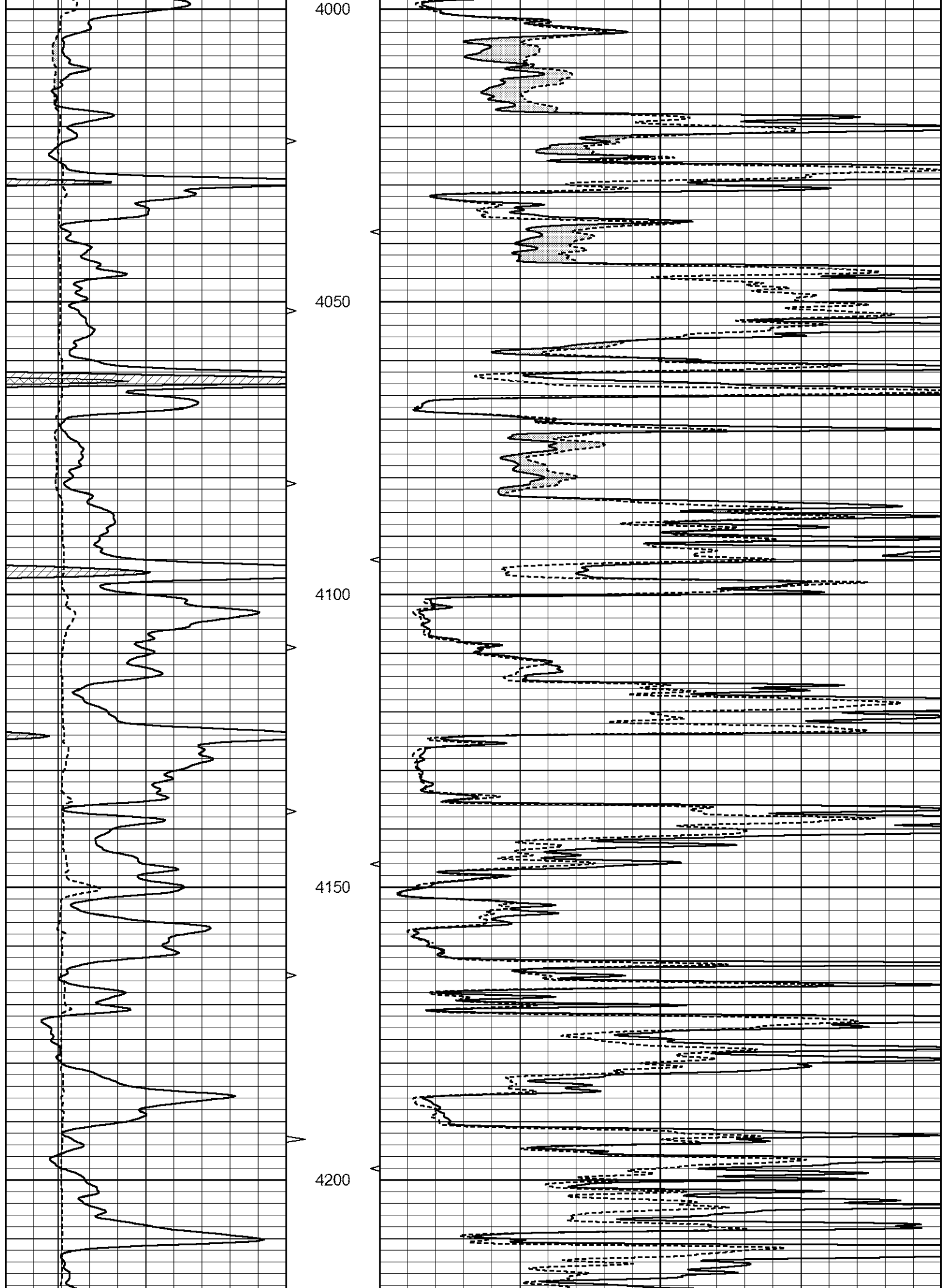
MAIN SECTION

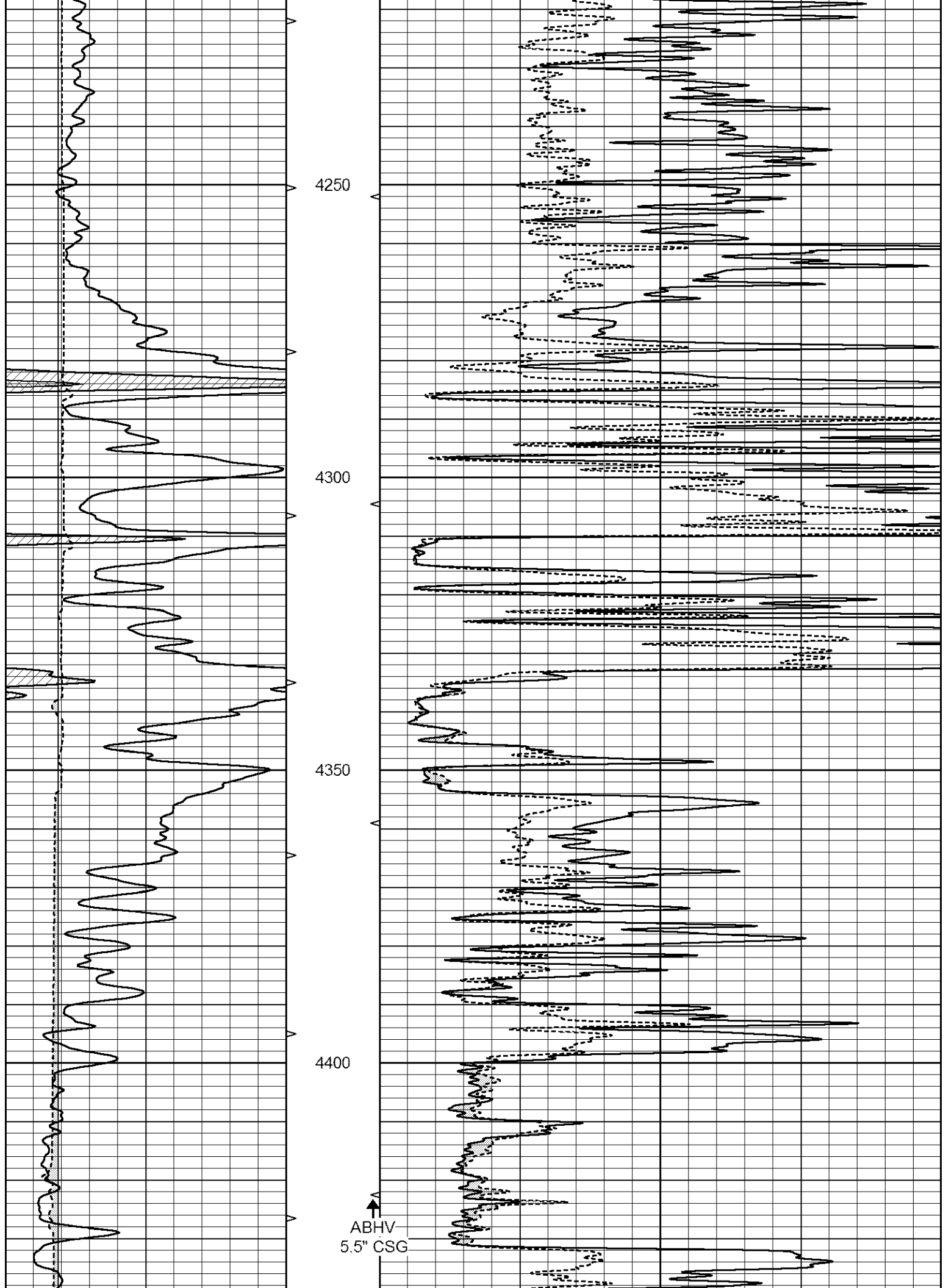
Database File 2041ddn8.db
 Dataset Pathname pass6.1
 Presentation Format _micro
 Dataset Creation Thu Apr 12 12:34:36 2018
 Charted by Depth in Feet scaled 1:240

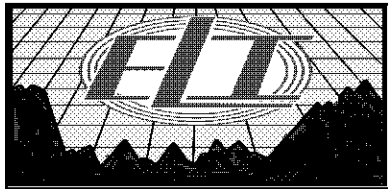
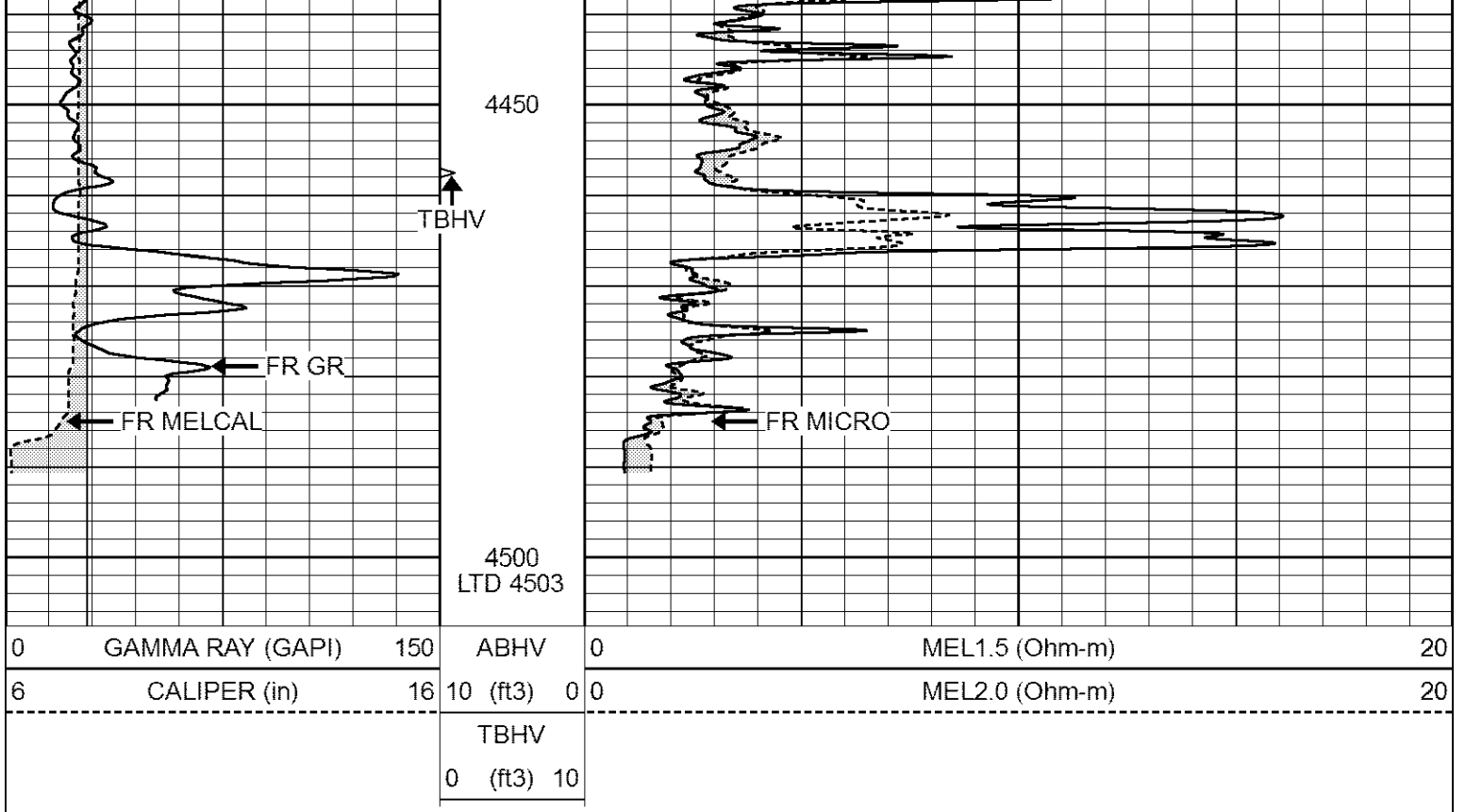
0	GAMMA RAY (GAPI)	150	ABHV	0	MEL1.5 (Ohm-m)	20
6	CALIPER (in)	16	10 (ft3)	0	MEL2.0 (Ohm-m)	20
			TBHV			
			0 (ft3)	10		







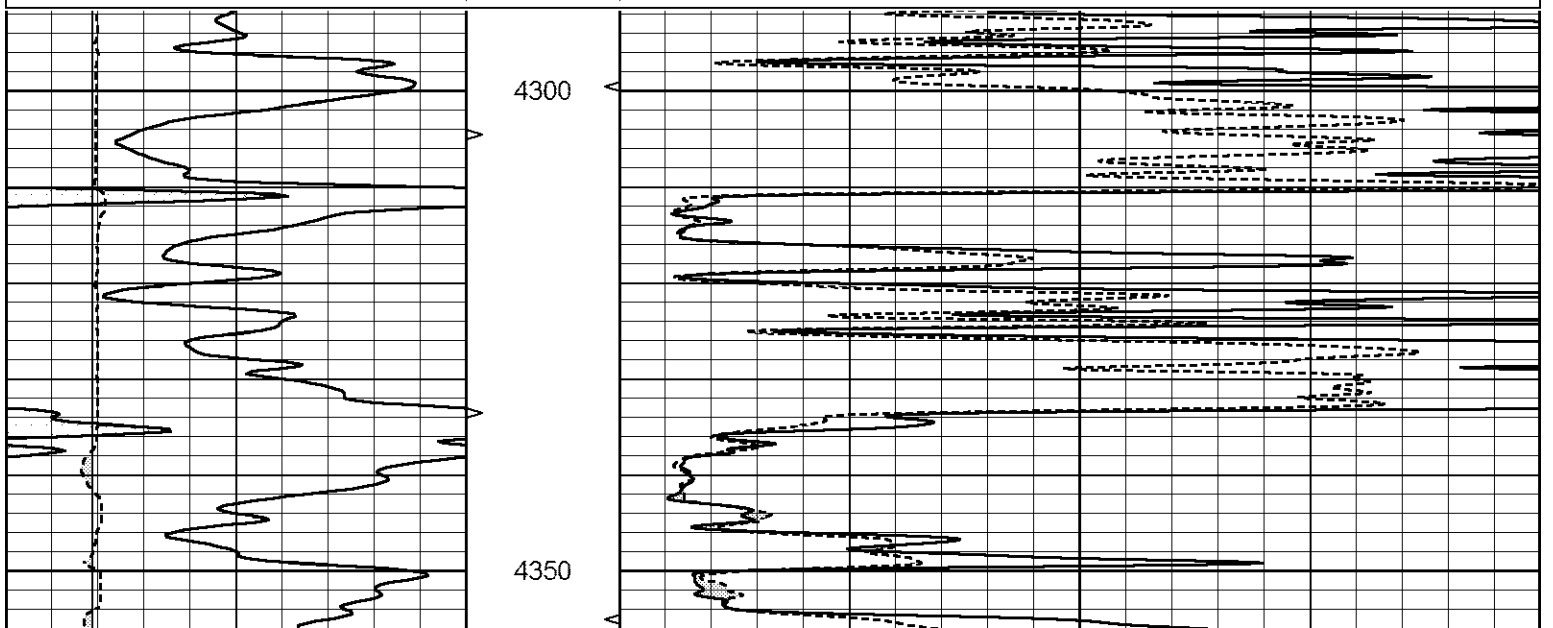


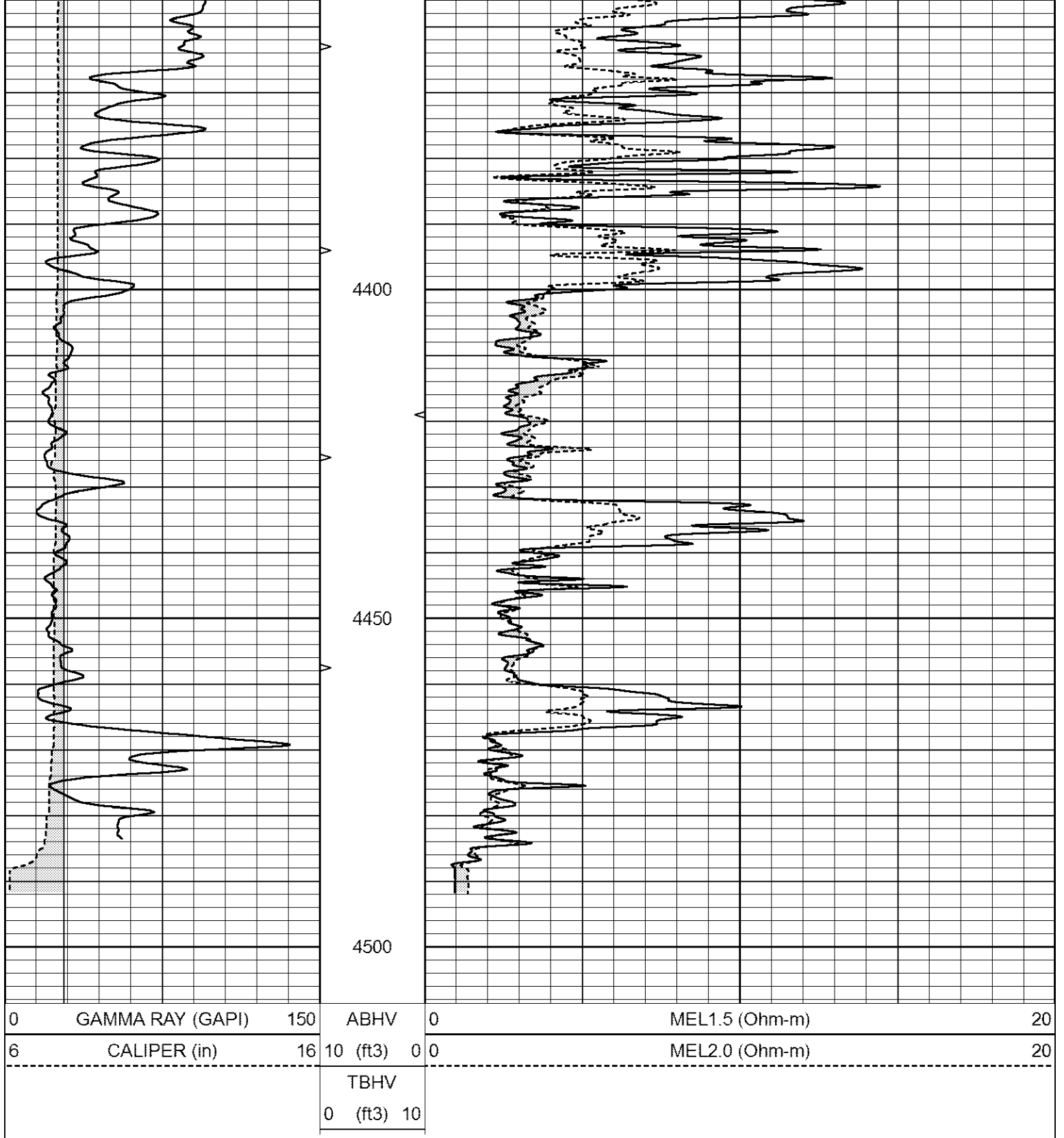


REPEAT SECTION

Database File 2041ddn8.db
 Dataset Pathname pass5.1
 Presentation Format _micro
 Dataset Creation Thu Apr 12 12:19:16 2018
 Charted by Depth in Feet scaled 1:240

0	GAMMA RAY (GAPI)	150	ABHV	0	MEL1.5 (Ohm-m)	20
6	CALIPER (in)	16	10 (ft3)	0	MEL2.0 (Ohm-m)	20
			TBHV			
			0 (ft3)	10		





Calibration Report

Database File 2041ddn8.db
 Dataset Pathname pass5.1
 Dataset Creation Thu Apr 12 12:19:16 2018

MICRO_USR Calibration Report

Serial Number: 070910
 Tool Model: Probel
 Performed: Sat Mar 31 18:03:44 2018

Caliper Calibration: Gain=7.336 Offset=3.217

References	Low Cal	High Cal						
Readings	8.000	14.000						
	0.652	1.470						
1.5" Calibration:	Gain=25.000	Offset=-0.067						
References	Low Cal	High Cal						
Readings	0.000	20.000						
	0.004	1.335						
2" Calibration:	Gain=45.000	Offset=-0.679						
References	Low Cal	High Cal						
Readings	0.000	20.000						
	0.004	1.029						
Microlog Calibration Report								
Serial-Model: Performed:			070910-ProbeL (Not Performed)					
	Readings			References			Results	
	Zero	Cal		Zero	Cal		m	b
Normal	0.0000	1.0000	V	0.0000	1.0000	Ohm-m	1.0000	0.0000
Inverse	0.0000	1.0000	V	0.0000	1.0000	Ohm-m	1.0000	0.0000
Caliper	0.0000	1.0000	V	0.0000	1.0000	in	1.0000	0.0000
Gamma Ray Calibration Report								
Serial Number:	7							
Tool Model:	Probe1							
Performed:	Wed Jun 29 11:10:58 2016							
Calibrator Value:	1.0	GAPI						
Background Reading:	0.0	cps						
Calibrator Reading:	1.0	cps						
Sensitivity:	0.2700	GAPI/cps						