



MICRO LOG

Company DOWNING-NELSON OIL CO., INC.
Well FRANK SCHNELLER #2-25
Field SCHNELLER
County TREGO
State KANSAS

Company DOWNING-NELSON OIL CO., INC.
Well FRANK SCHNELLER #2-25
Field SCHNELLER
County TREGO State KANSAS

Location: API #: 15-195-23041-00-00
2300 FNL & 335 FEL
SEC 25 TWP 13S RGE 21W
Permanent Datum GROUND LEVEL Elevation 2318'
Log Measured From KELLY BUSHING 8' A.G.L.
Drilling Measured From KELLY BUSHING
Other Services CDL/CNL/DIL SONIC
Elevation K.B. 2326
D.F. 2324
G.L. 2318

Date	05/25/18		
Run Number	TWO		
Depth Driller	4076		
Depth Logger	4077		
Bottom Logged Interval	4057		
Top Log Interval	3250		
Casing Driller	8 5/8@ 220		
Casing Logger	220		
Bit Size	7 7/8"		
Type Fluid in Hole	CHEMICAL MUD	CHLORIDES 8000 PPM	
Density / Viscosity	9.2/53		
pH / Fluid Loss	9.5/10.0		
Source of Sample	FLOWLINE		
Rm @ Meas. Temp	1.0@80		
Rmt @ Meas. Temp	.75@80		
Rmc @ Meas. Temp	1.2@80		
Source of Rmf / Rmc	MEASURED		
Rm @ BHT	.68@117		
Time Circulation Stopped	2 HOURS		
Time Logger on Bottom	///		
Maximum Recorded Temperature	117F		
Equipment Number	4010		
Location	HAYS, KANSAS		
Recorded By	GUS PFANENSTIEL		
Witnessed By	MARC DOWNING		

<<< Fold Here >>>

All interpretations are opinions based on inferences from electrical or other measurements and we cannot and do not guarantee the accuracy or correctness of any interpretation, and we shall not, except in the case of gross or willful negligence on our part, be liable or responsible for any loss, costs, damages, or expenses incurred or sustained by anyone resulting from any interpretation made by any of our officers, agents or employees. These interpretations are also subject to our general terms and conditions set out in our current Price Schedule.

Comments

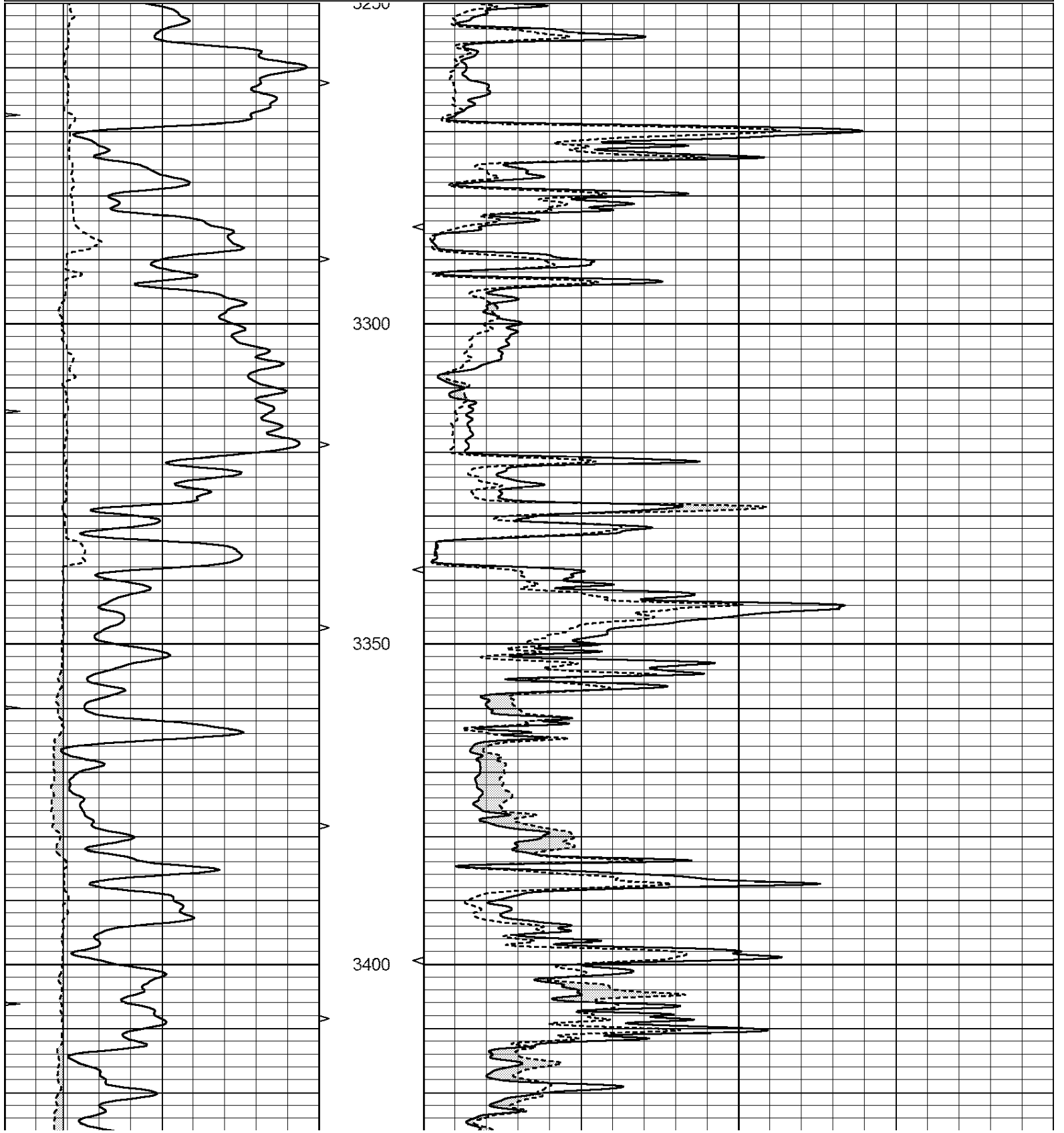
THANK YOU FOR USING ELI WIRELINE, HAYS, KS. (785) 628-6395
DIRECTIONS
1 SOUTH ON ELLIS BLACKTOP, 2 WEST, 1 1/2 SOUTH,
WEST INTO

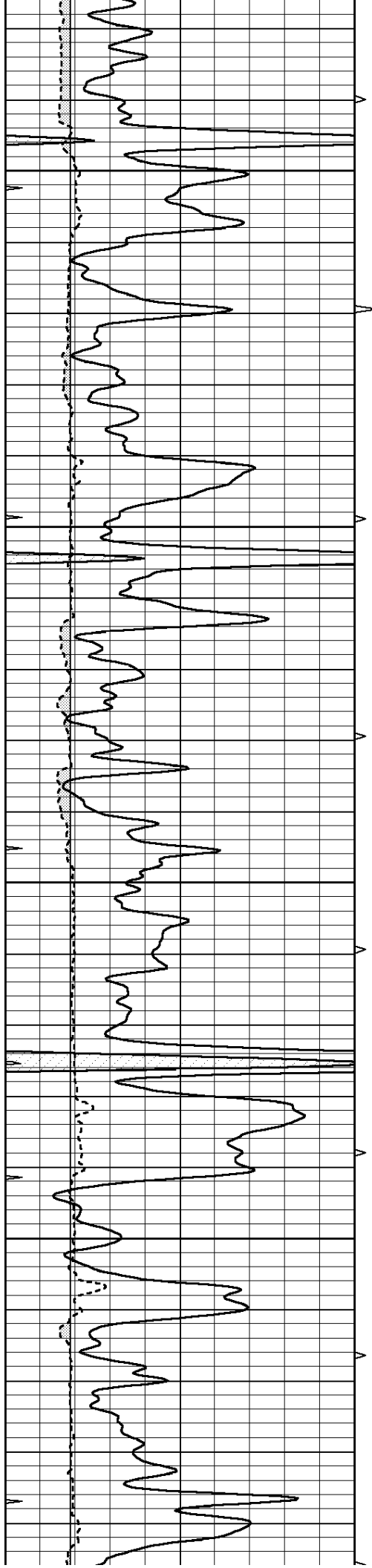


MAIN PASS

Database File: 2680ddn.db
 Dataset Pathname: pass5
 Presentation Format: _micro
 Dataset Creation: Fri May 25 03:08:42 2018 by Log Open-Cased 090629
 Charted by: Depth in Feet scaled 1:240

0	GAMMA RAY (GAPI)	150	ABHV	0	MEL1.5 (Ohm-m)	40
6	CALIPER (in)	16	10 (ft3)	0	MEL2.0 (Ohm-m)	40
0	MINMK	20	TBHV			
			0 (ft3)	10		



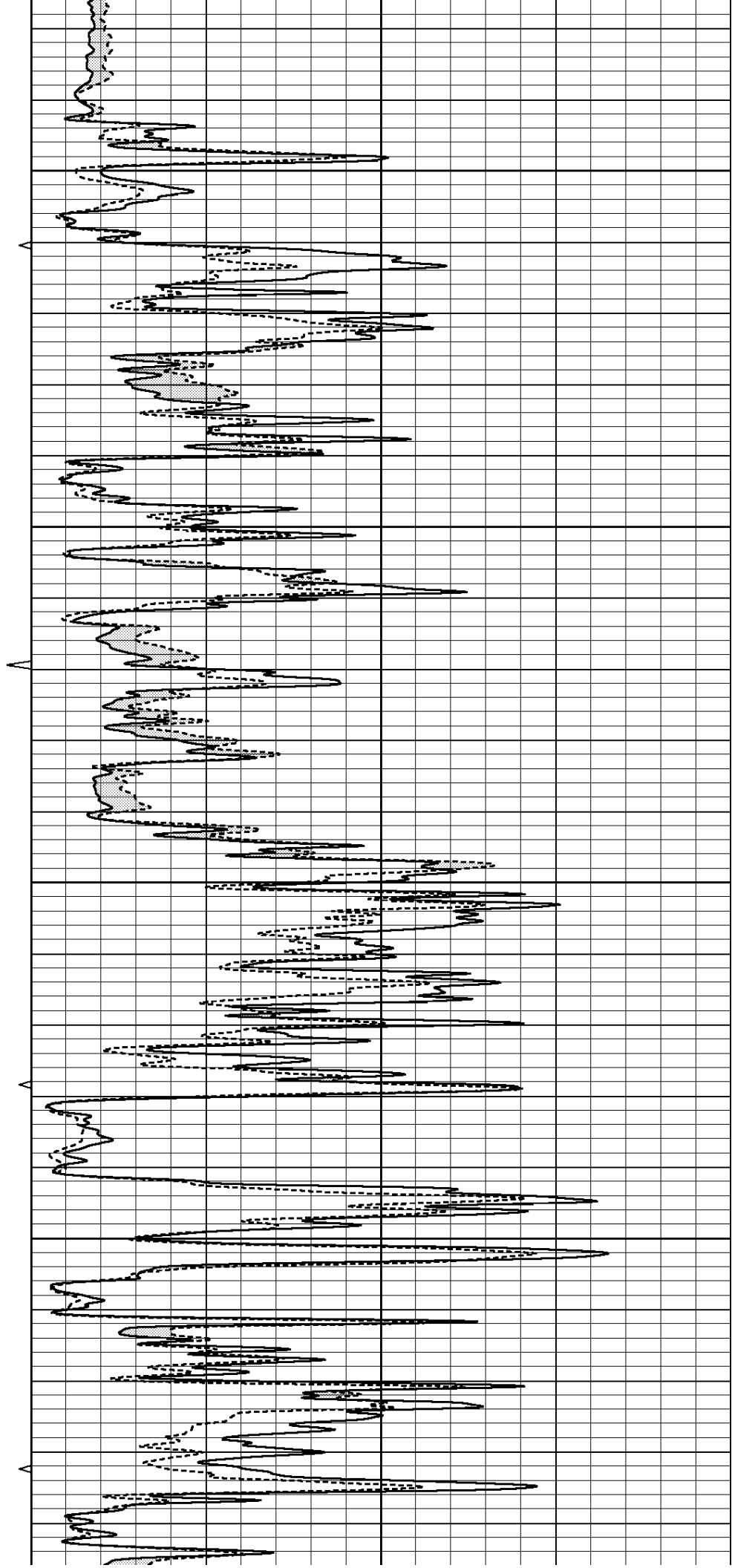


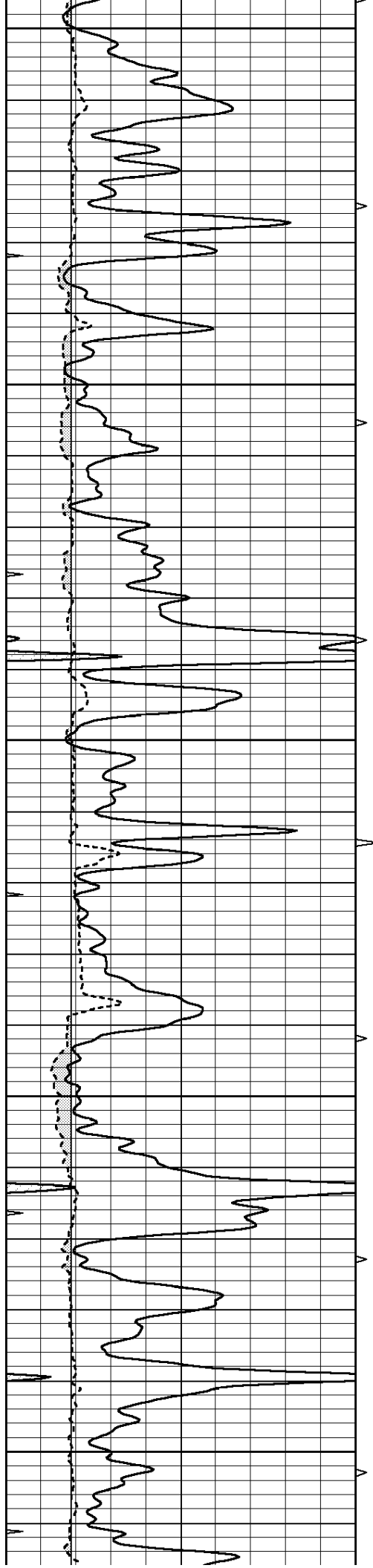
3450

3500

3550

3600





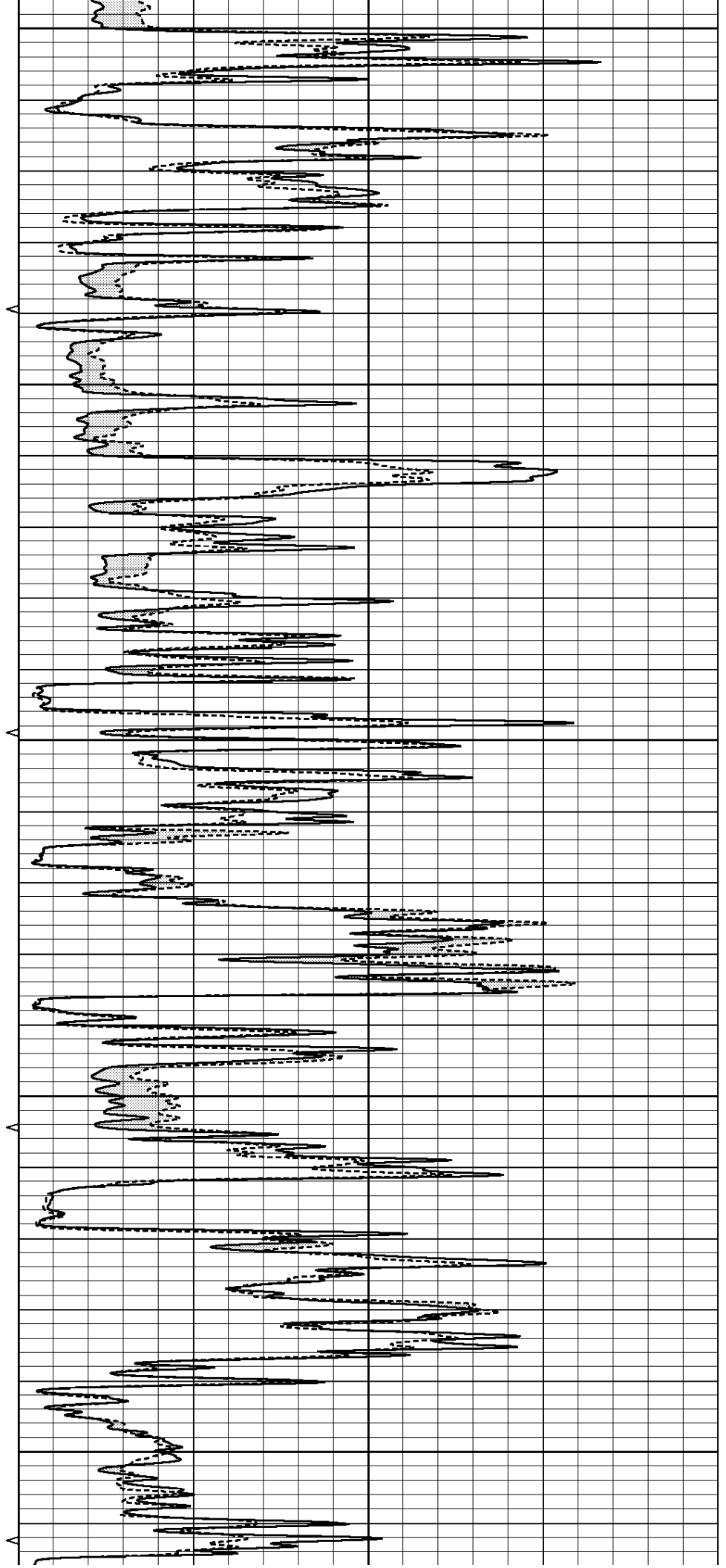
3650

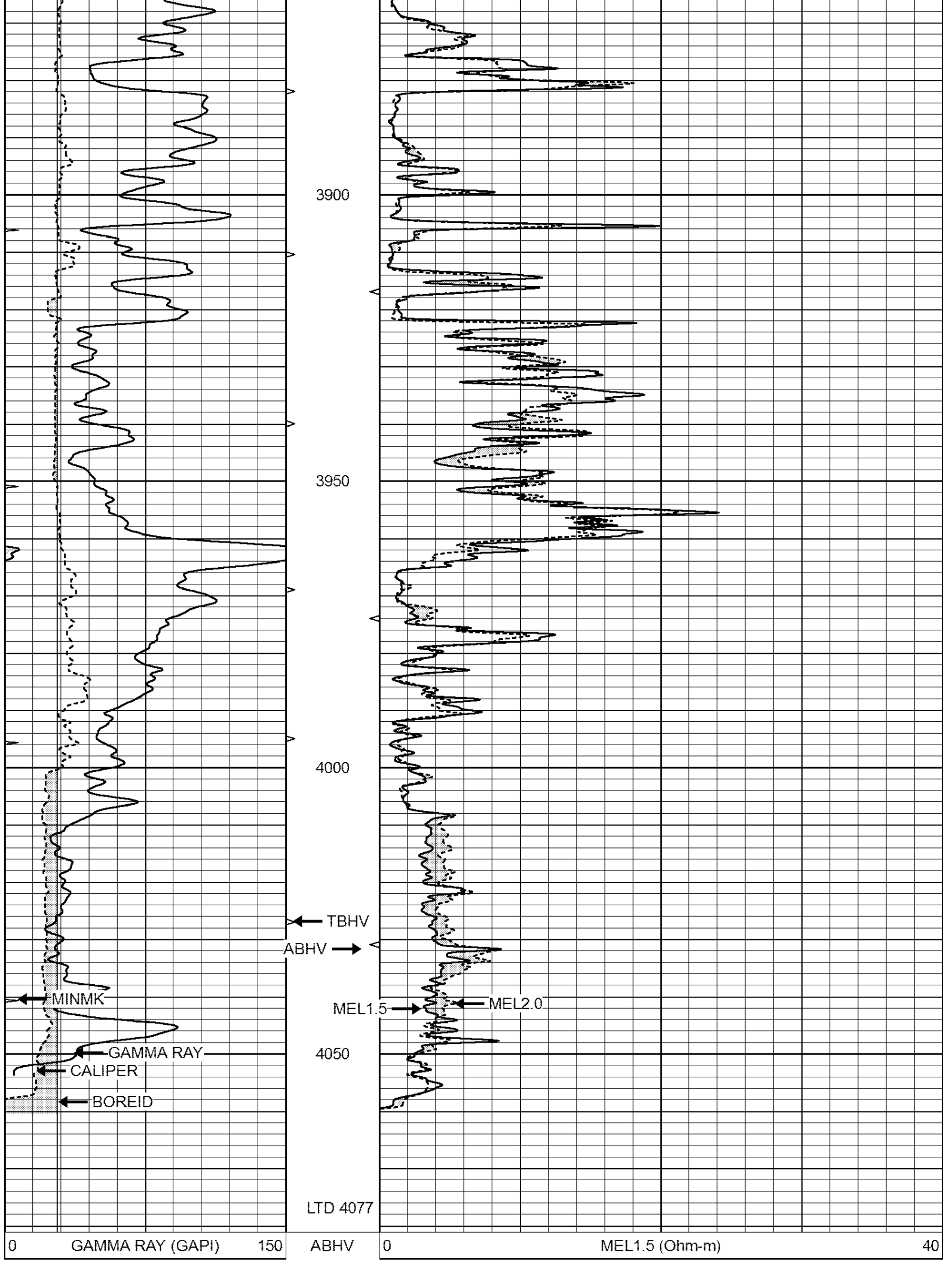
3700

3750

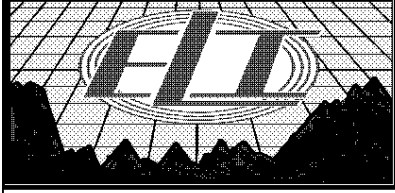
3800

3850





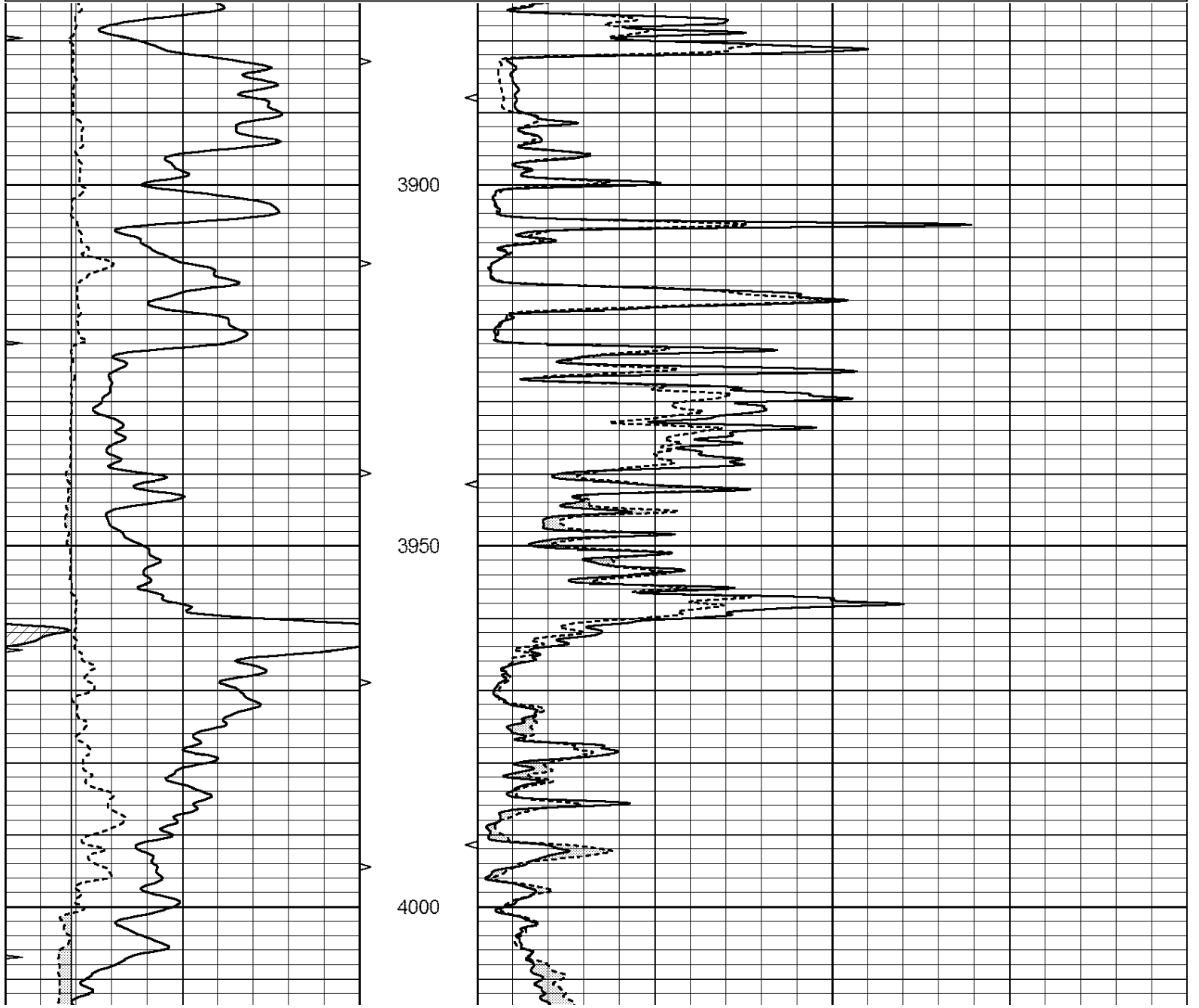
6	CALIPER (in)	16	10 (ft3)	0 0	MEL2.0 (Ohm-m)	40
0	MINMK	20	TBHV			
			0 (ft3)	10		

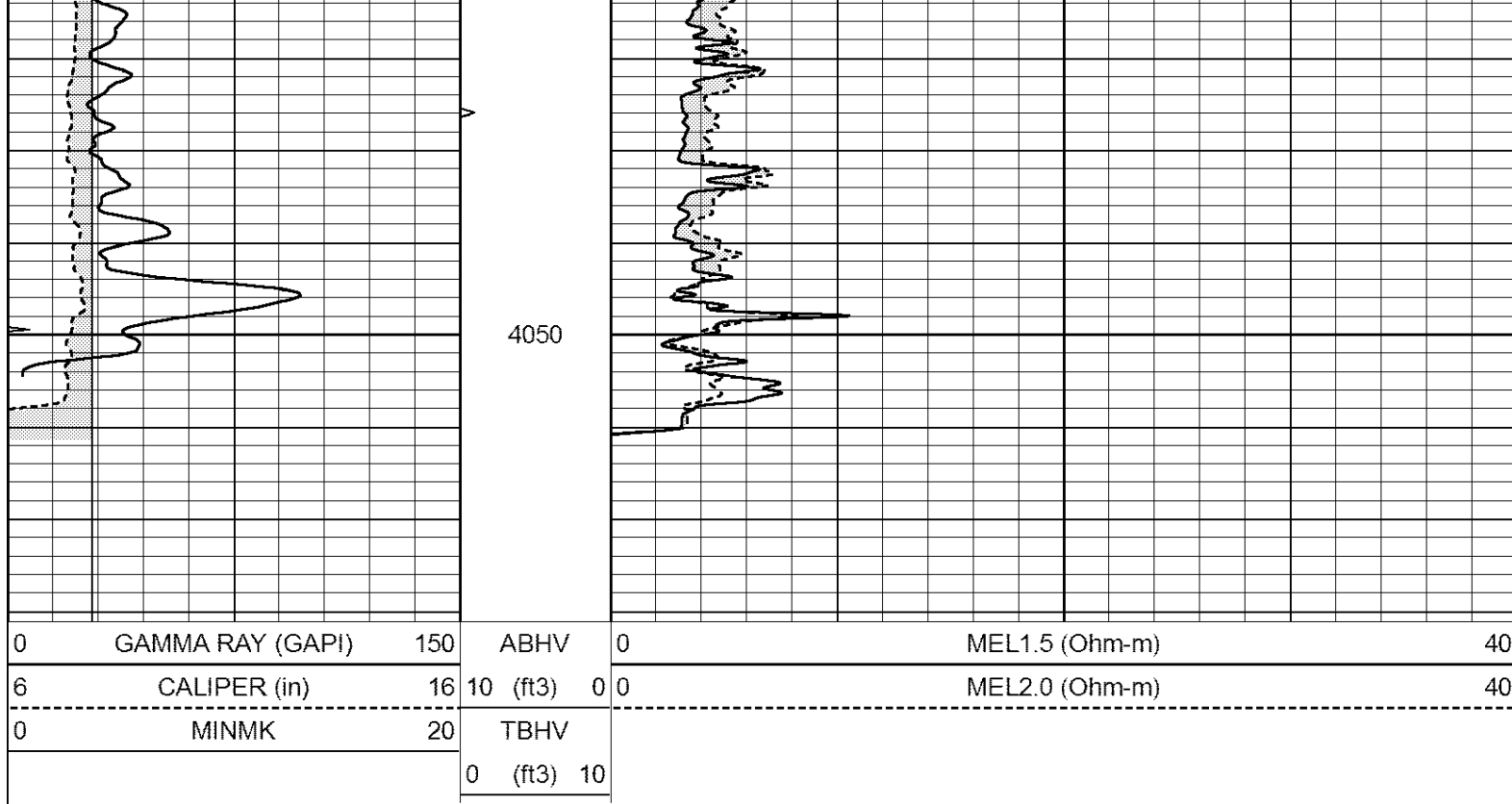


REPEAT SECTION

Database File: 2680ddn.db
 Dataset Pathname: pass4
 Presentation Format: _micro
 Dataset Creation: Fri May 25 02:59:56 2018 by Log Open-Cased 090629
 Charted by: Depth in Feet scaled 1:240

0	GAMMA RAY (GAPI)	150	ABHV	0	MEL1.5 (Ohm-m)	40
6	CALIPER (in)	16	10 (ft3)	0 0	MEL2.0 (Ohm-m)	40
0	MINMK	20	TBHV			
			0 (ft3)	10		





Calibration Report

Database File: 2680ddn.db
 Dataset Pathname: pass4
 Dataset Creation: Fri May 25 02:59:56 2018 by Log Open-Cased 090629

MICRO Calibration Report

Serial Number: MICRO6
 Tool Model: PROBE
 Performed: Wed May 09 00:54:36 2018

Caliper Calibration: Gain=26.621 Offset=0.453

	Low Cal	High Cal
References	7.000	14.000
Readings	0.217	0.478

1.5" Calibration: Gain=29.075 Offset=-0.400

	Low Cal	High Cal
References	0.000	20.000
Readings	0.004	1.196

2" Calibration: Gain=45.000 Offset=-1.000

	Low Cal	High Cal
References	0.000	20.000
Readings	0.006	0.913

Gamma Ray Calibration Report

Serial Number: #8
 Tool Model: OPEN
 Performed: Tue May 15 00:49:07 2018

Calibrator Value: 150.0 GAPI

Background Reading: 0.0 cps
 Calibrator Reading: 175.0 cps

Sensitivity:

0.9000

GAPI/cps