



DUAL INDUCTION LOG

Company DOWNING-NELSON OIL CO., INC.
 Well FRANK SCHNELLER #2-25
 Field SCHNELLER
 County TREGO
 State KANSAS

Company DOWNING-NELSON OIL CO., INC.
 Well FRANK SCHNELLER #2-25
 Field SCHNELLER
 County TREGO State KANSAS

Location: API #: 15-195-23041-00-00
 2300 FNL & 335 FEL
 SEC 25 TWP 13S RGE 21W
 Permanent Datum GROUND LEVEL Elevation 2318'
 Log Measured From KELLY BUSHING 8' A.G.L.
 Drilling Measured From KELLY BUSHING
 Other Services CDL/CNL/ML
 SONIC
 Elevation
 K.B. 2326
 D.F. 2324
 G.L. 2318

Date	05/25/18		
Run Number	ONE		
Depth Driller	4076		
Depth Logger	4077		
Bottom Logged Interval	4076		
Top Log Interval	50		
Casing Driller	8 5/8@ 220		
Casing Logger	220		
Bit Size	7 7/8"		
Type Fluid in Hole	CHEMICAL MUD	CHLORIDES 8000 PPM	
Density / Viscosity	9.2/53		
pH / Fluid Loss	9.5/10.0		
Source of Sample	FLOWLINE		
Rm @ Meas. Temp	1.0@80		
Rmt @ Meas. Temp	.75@80		
Rmc @ Meas. Temp	1.2@80		
Source of Rmt / Rmc	MEASURED		
Rm @ BHT	.68@117		
Time Circulation Stopped	2 HOURS		
Time Logger on Bottom	///		
Maximum Recorded Temperature	117F		
Equipment Number	4010		
Location	HAYS, KANSAS		
Recorded By	GUS PFANENSTIEL		
Witnessed By	MARC DOWNING		

<<< Fold Here >>>

All interpretations are opinions based on inferences from electrical or other measurements and we cannot and do not guarantee the accuracy or correctness of any interpretation, and we shall not, except in the case of gross or willful negligence on our part, be liable or responsible for any loss, costs, damages, or expenses incurred or sustained by anyone resulting from any interpretation made by any of our officers, agents or employees. These interpretations are also subject to our general terms and conditions set out in our current Price Schedule.

Comments

THANK YOU FOR USING ELI WIRELINE, HAYS, KS. (785) 628-6395

DIRECTIONS
 1 SOUTH ON ELLIS BLACKTOP, 2 WEST, 1 1/2 SOUTH,
 WEST INTO



MAIN PASS

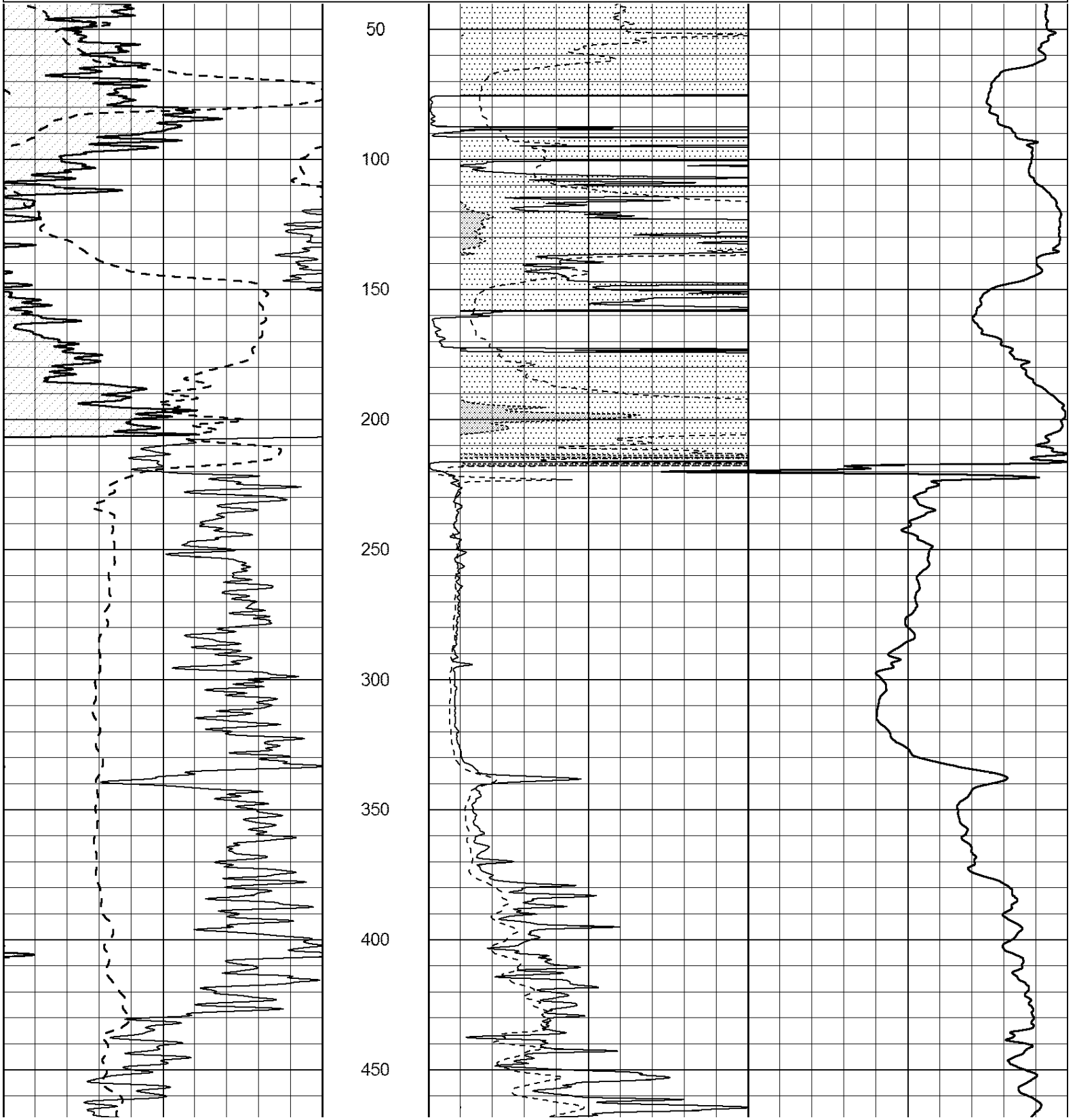
Database File: 2680ddn.db
 Dataset Pathname: pass3.1
 Presentation Format: _dil2
 Dataset Creation: Fri May 25 02:32:59 2018 by Calc Open-Cased 090629
 Charted by: Depth in Feet scaled 1:600

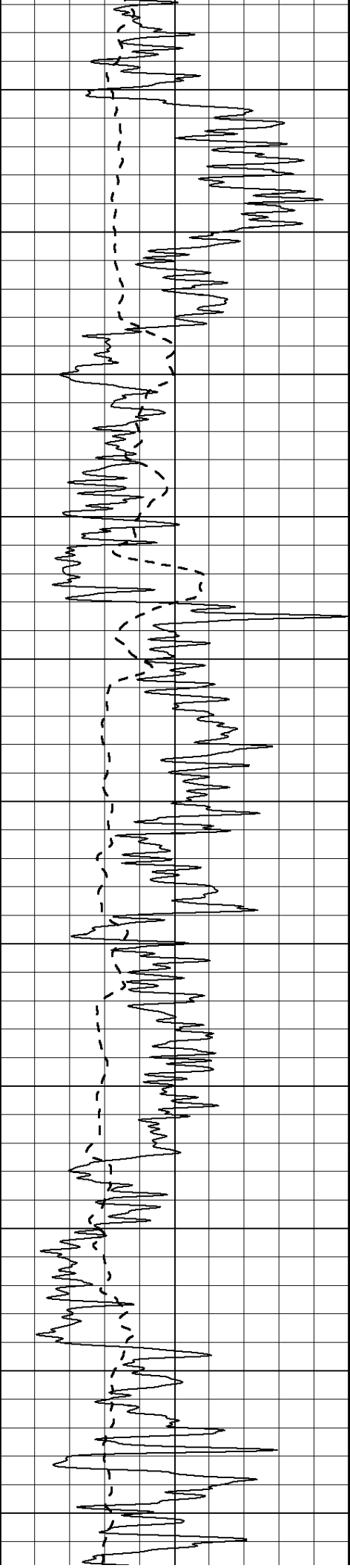
0	Gamma Ray (GAPI)	150
-100	SP (mV)	100

0	RLL3 (Ohm-m)	50
0	RILD (Ohm-m)	50

1000	CILD (mmho/m)	0
------	---------------	---

50	RILD X10 (Ohm-m)	500
50	RLL3 X10 (Ohm-m)	500





500

550

600

650

700

750

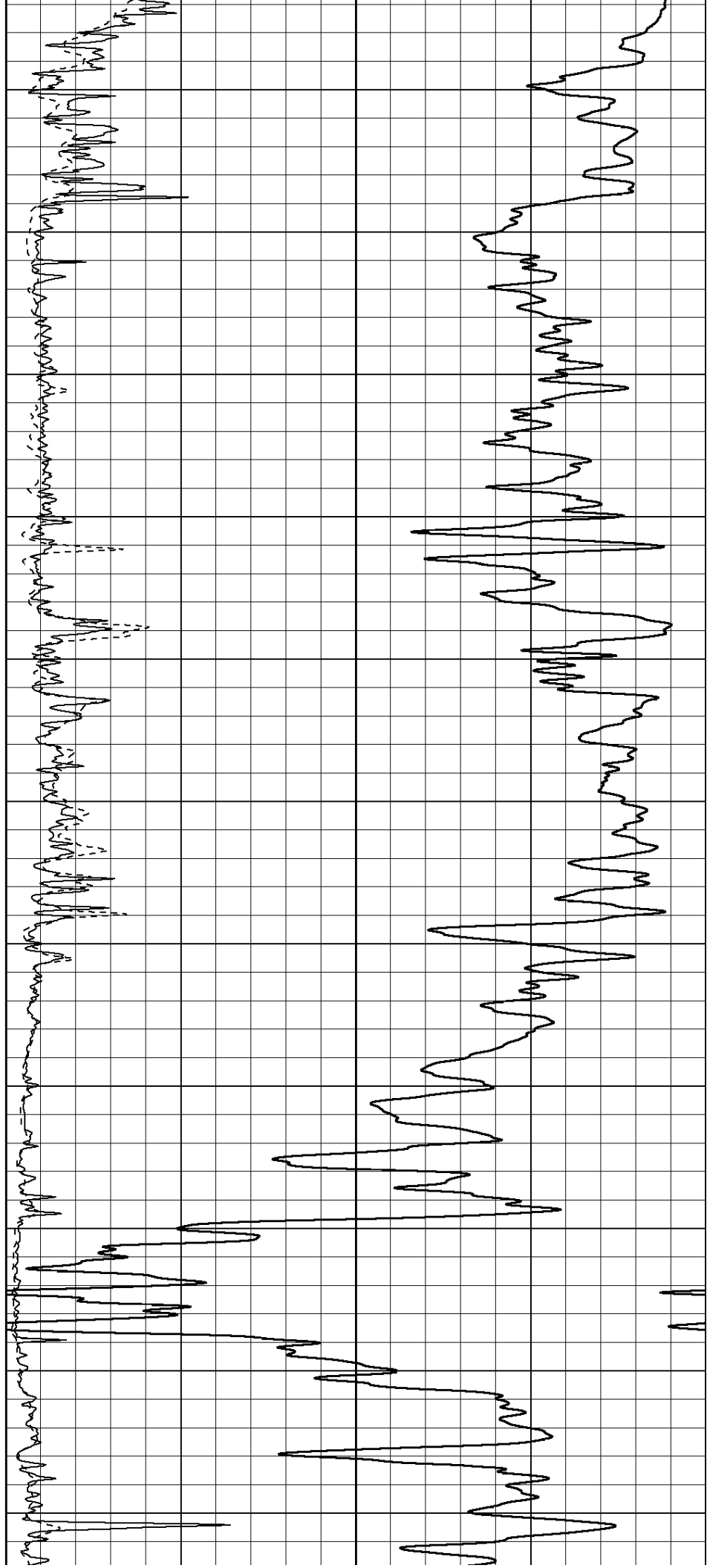
800

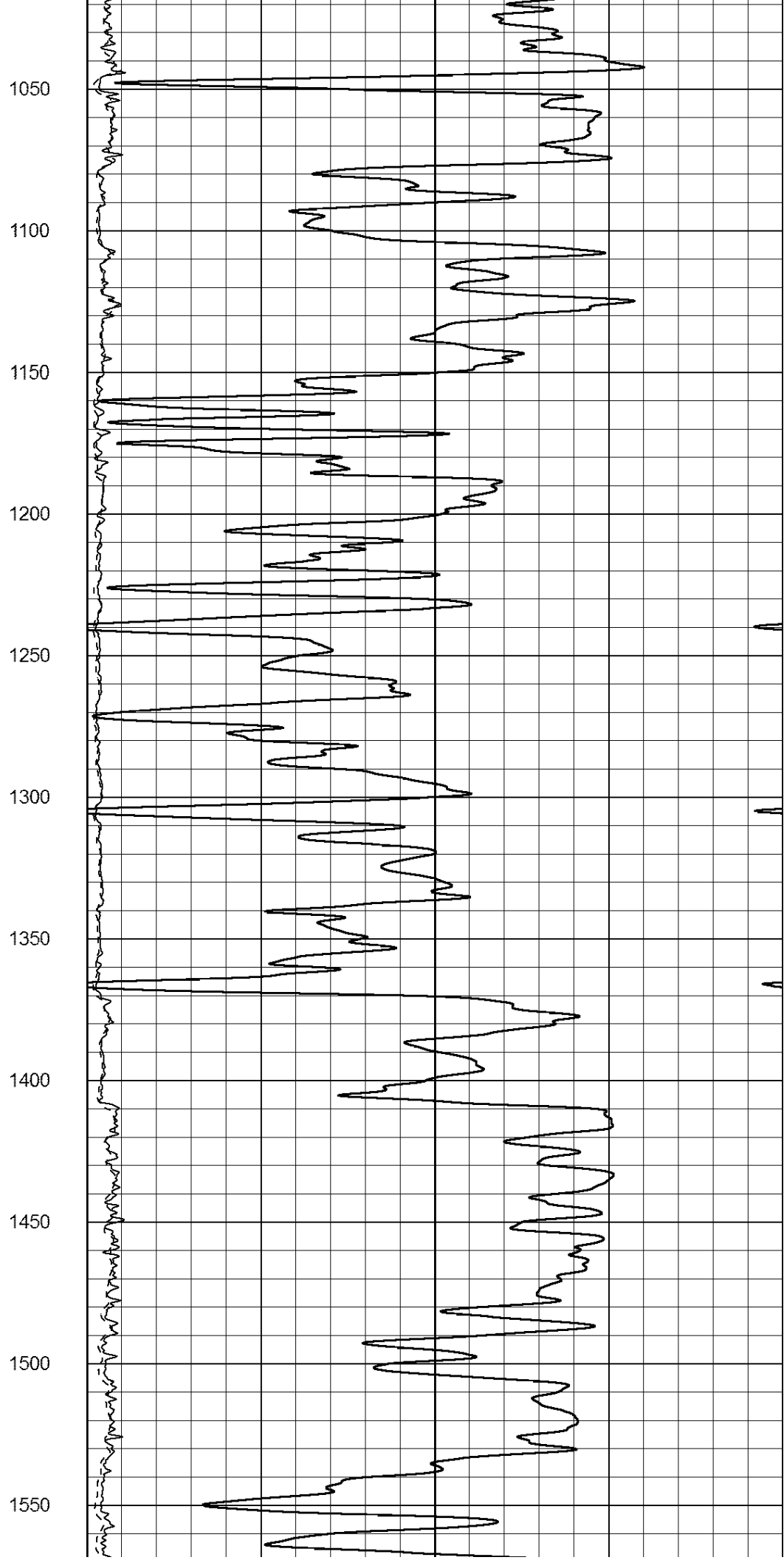
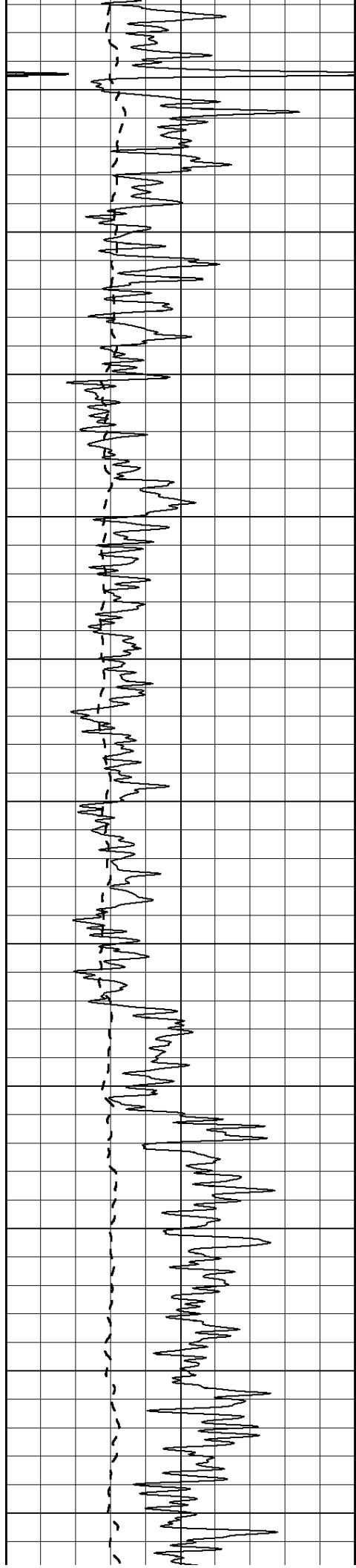
850

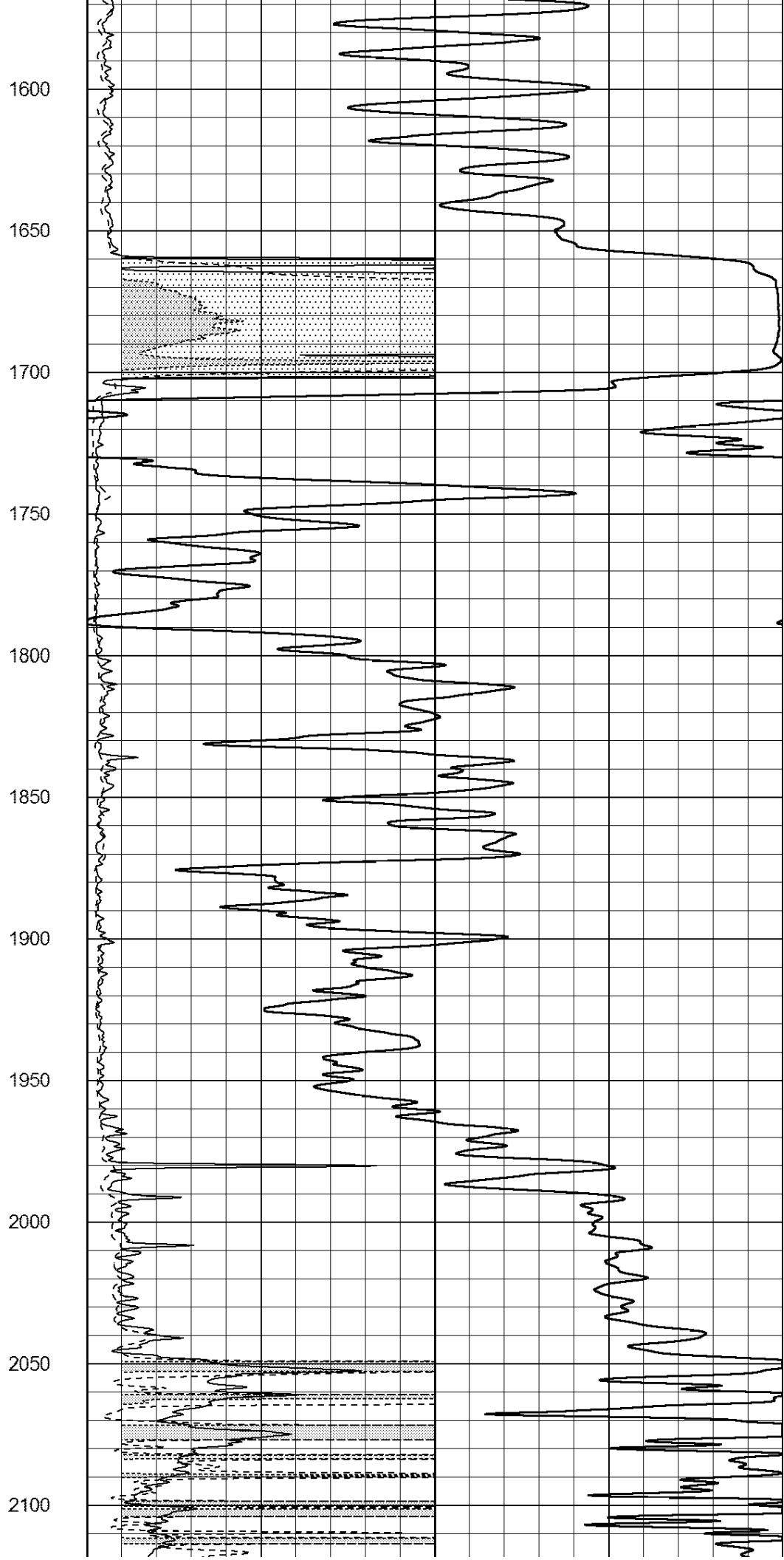
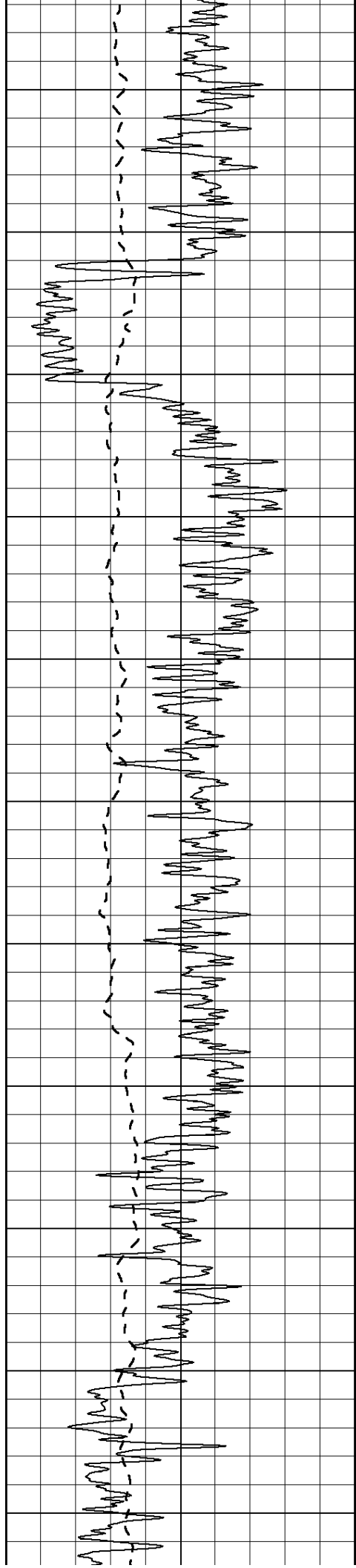
900

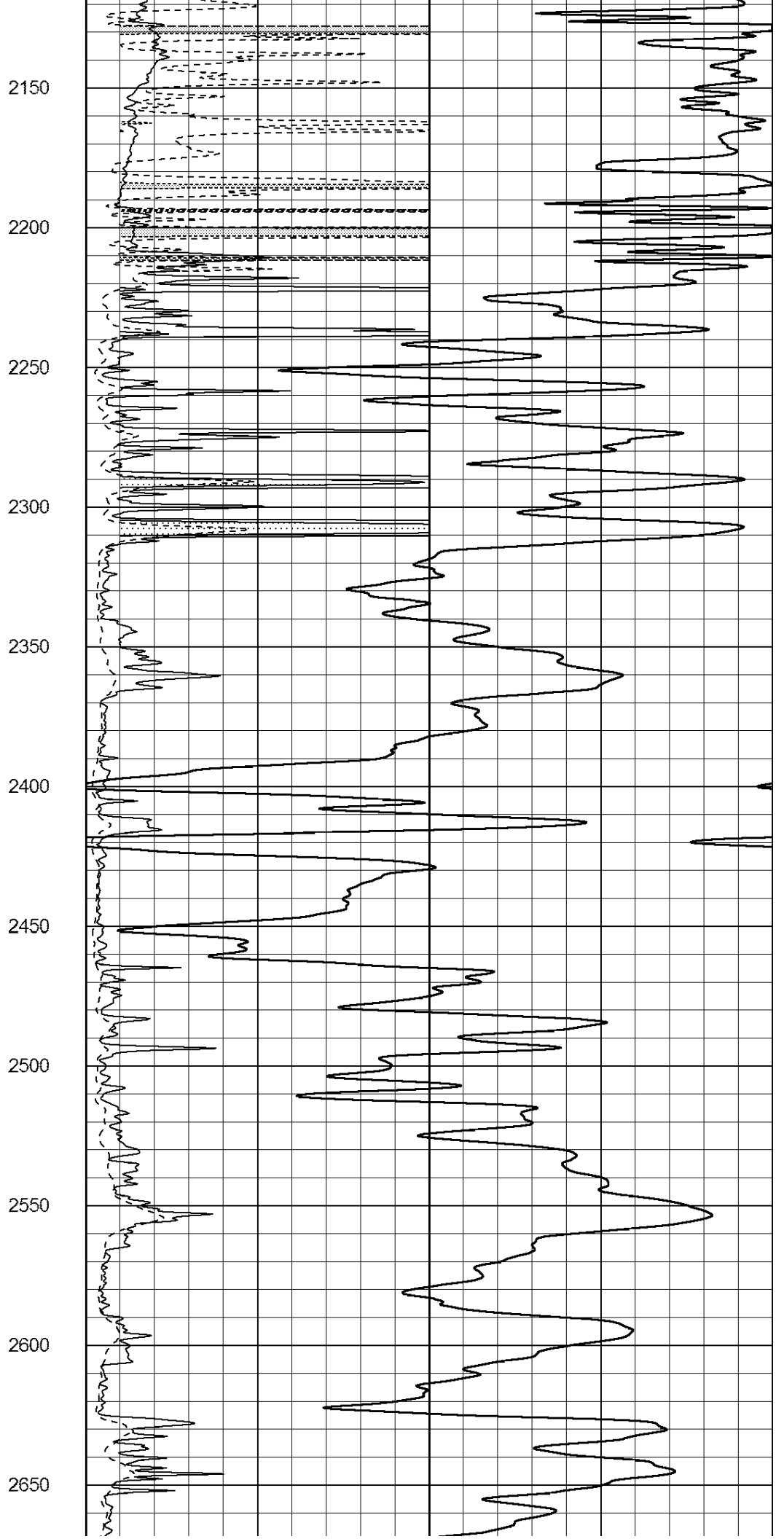
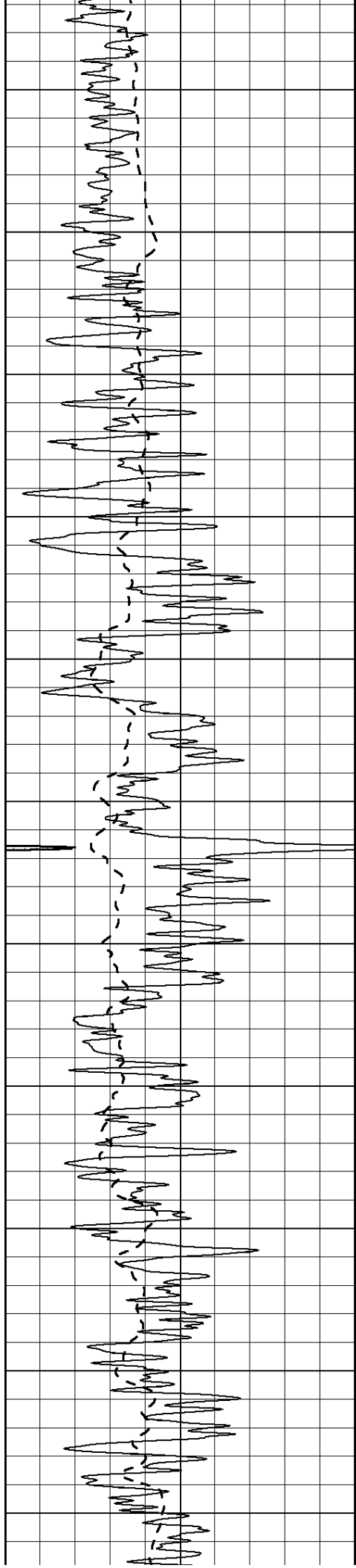
950

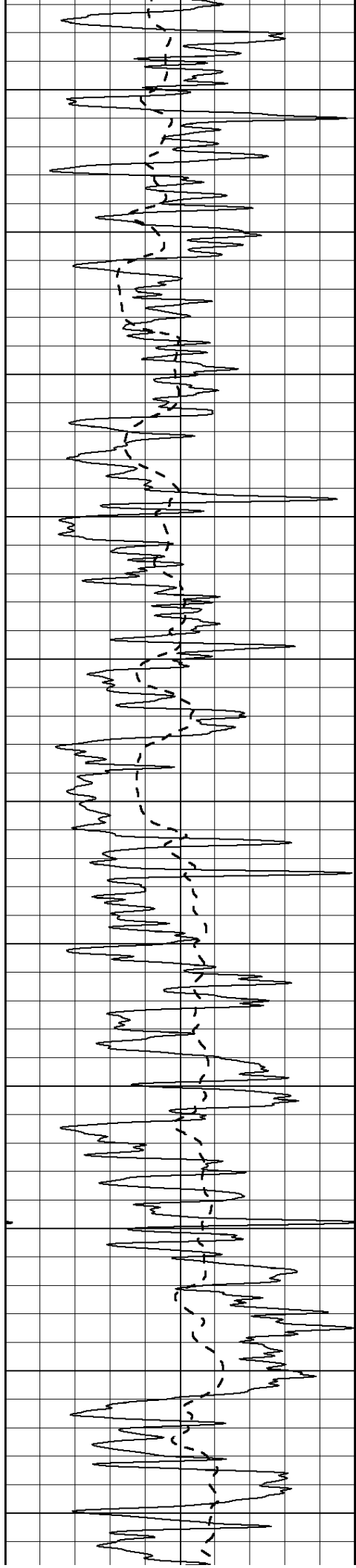
1000











2700

2750

2800

2850

2900

2950

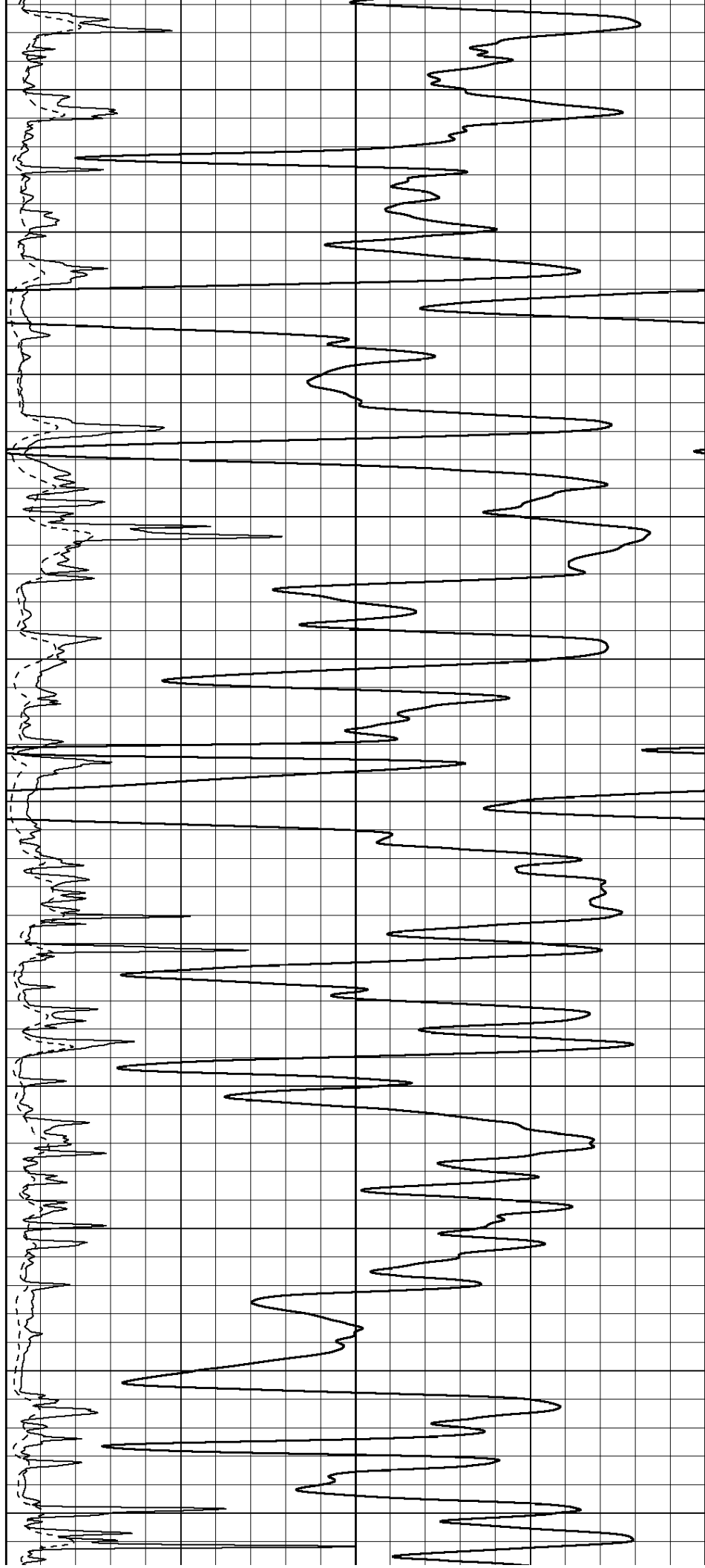
3000

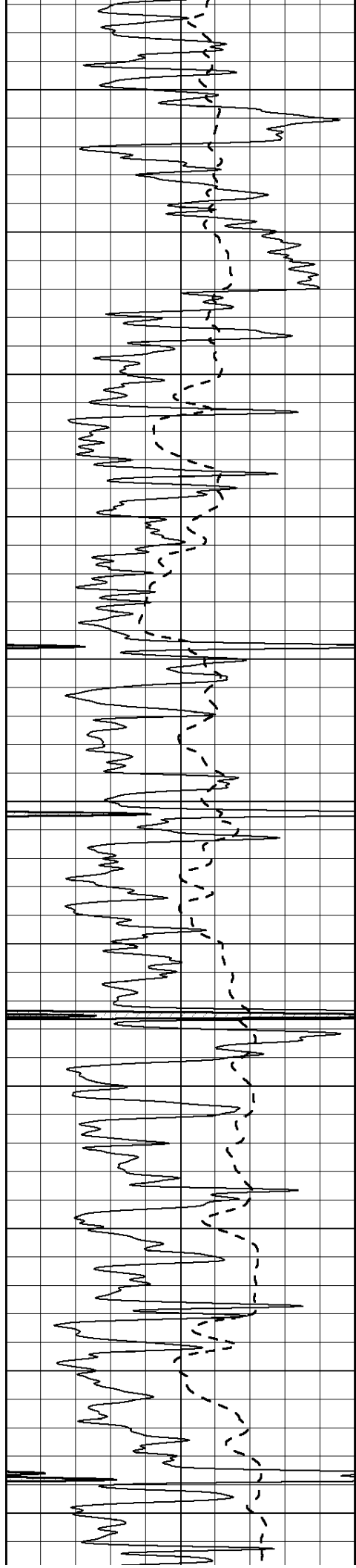
3050

3100

3150

3200





3250

3300

3350

3400

3450

3500

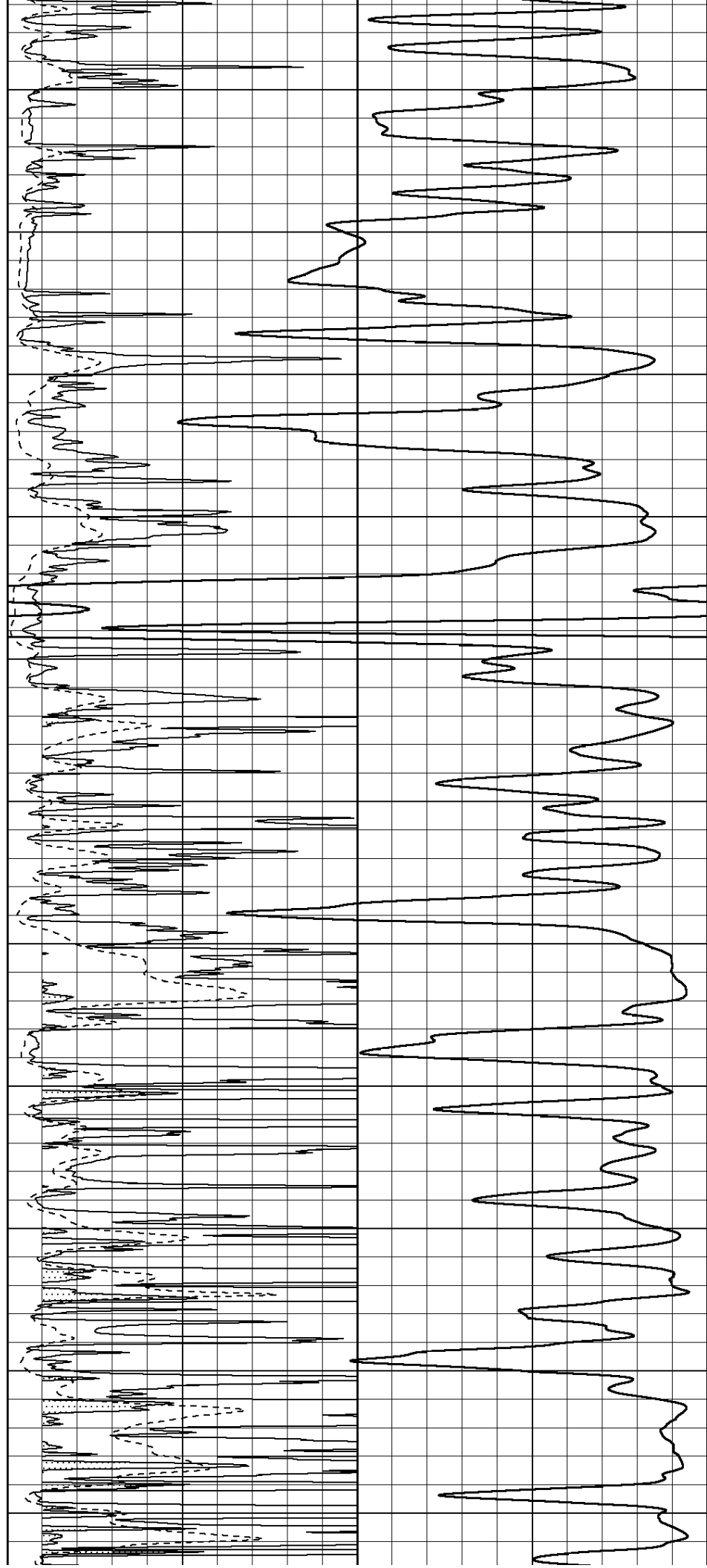
3550

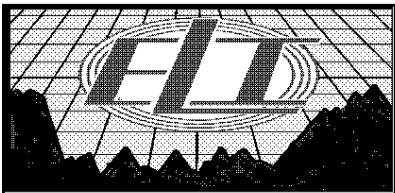
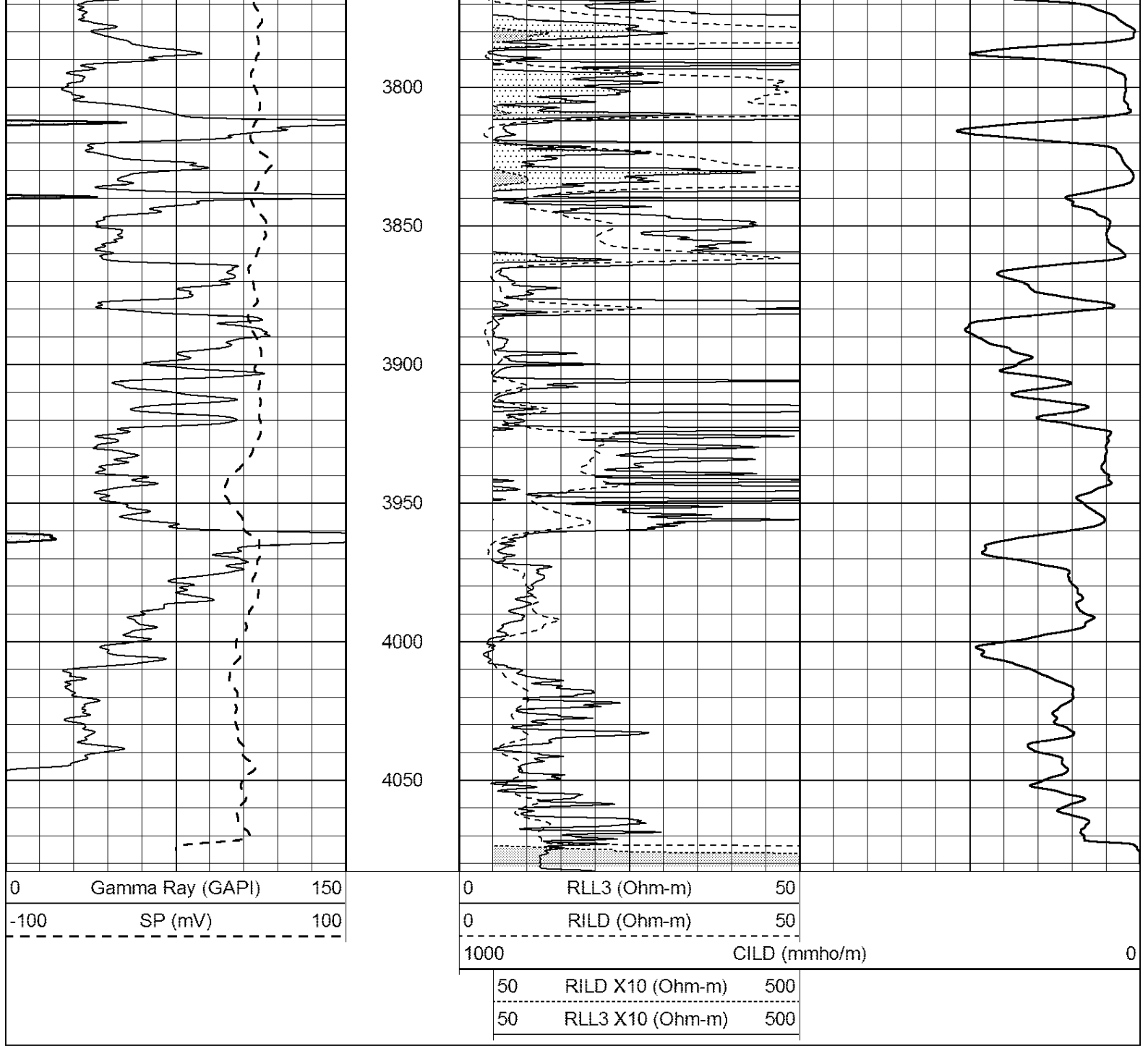
3600

3650

3700

3750

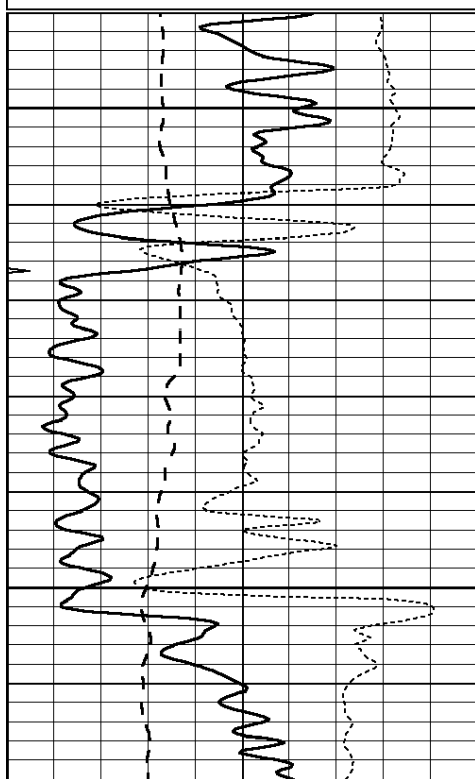




MAIN PASS

Database File: 2680ddn.db
 Dataset Pathname: pass3.1
 Presentation Format: _dil
 Dataset Creation: Fri May 25 02:32:59 2018 by Calc Open-Cased 090629
 Charted by: Depth in Feet scaled 1:240

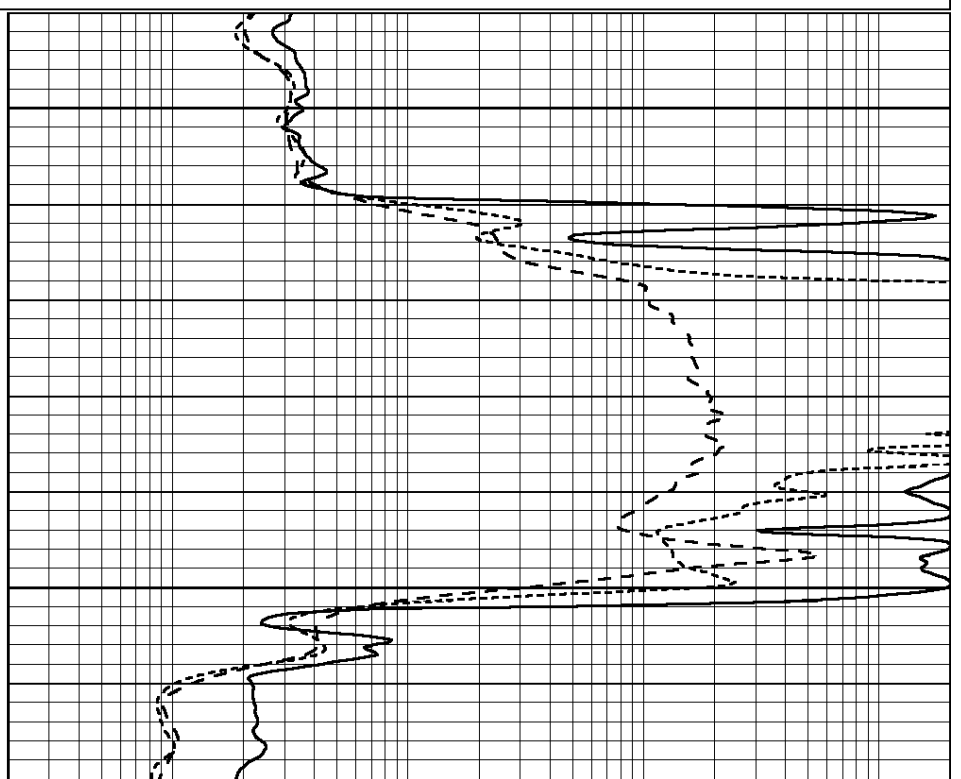
0	GAMMA RAY (GAPI)	150	0.2	SHALLOW GUARD (Ohm-m)	2000
-100	SP (mV)	100	0.2	DEEP INDUCTION (Ohm-m)	2000
-250	Rxo/Rt	50	0.2	MEDIUM INDUCTION (Ohm-m)	2000
0	MINMK	20			



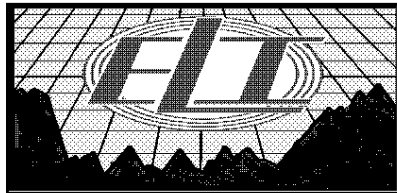
1650

1700

0	GAMMA RAY (GAPI)	150
-100	SP (mV)	100
-250	Rxo/Rt	50
0	MINMK	20



0.2	SHALLOW GUARD (Ohm-m)	2000
0.2	DEEP INDUCTION (Ohm-m)	2000
0.2	MEDIUM INDUCTION (Ohm-m)	2000

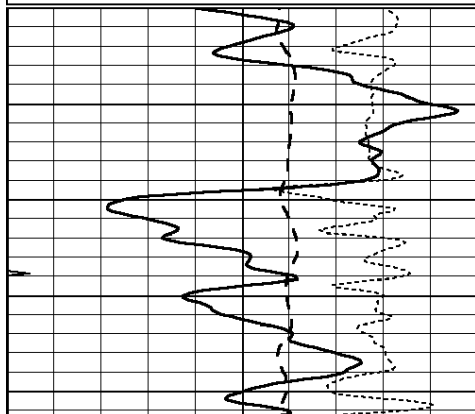


MAIN PASS

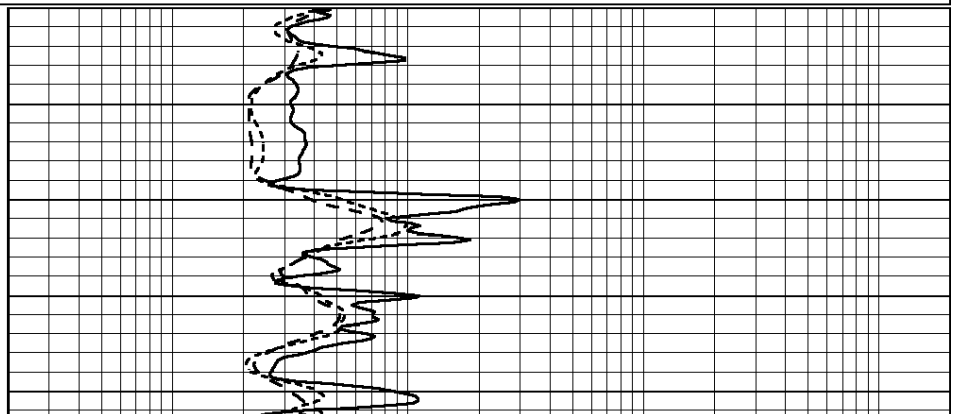
Database File: 2680ddn.db
 Dataset Pathname: pass3.1
 Presentation Format: _dil
 Dataset Creation: Fri May 25 02:32:59 2018 by Calc Open-Cased 090629
 Charted by: Depth in Feet scaled 1:240

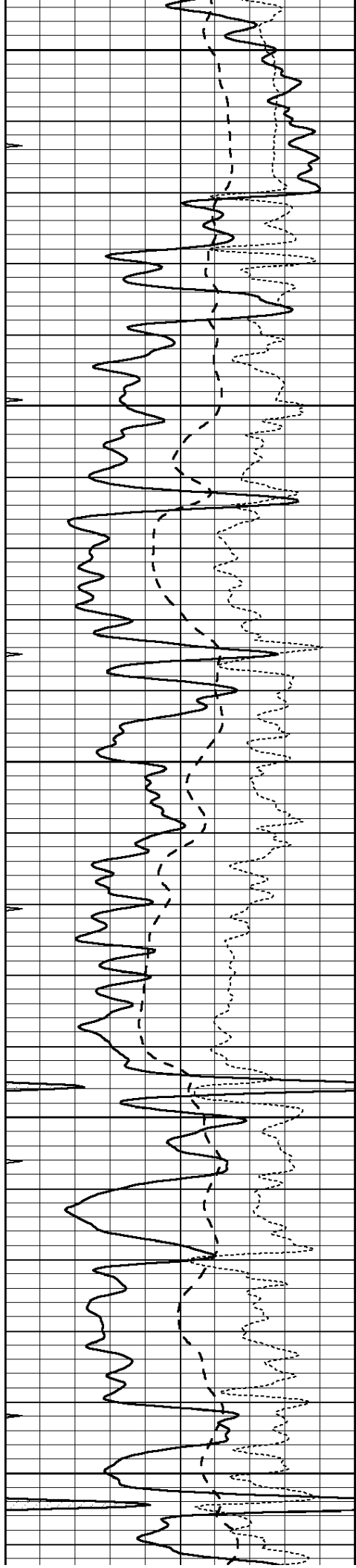
0	GAMMA RAY (GAPI)	150
-100	SP (mV)	100
-250	Rxo/Rt	50
0	MINMK	20

0.2	SHALLOW GUARD (Ohm-m)	2000
0.2	DEEP INDUCTION (Ohm-m)	2000
0.2	MEDIUM INDUCTION (Ohm-m)	2000



1650





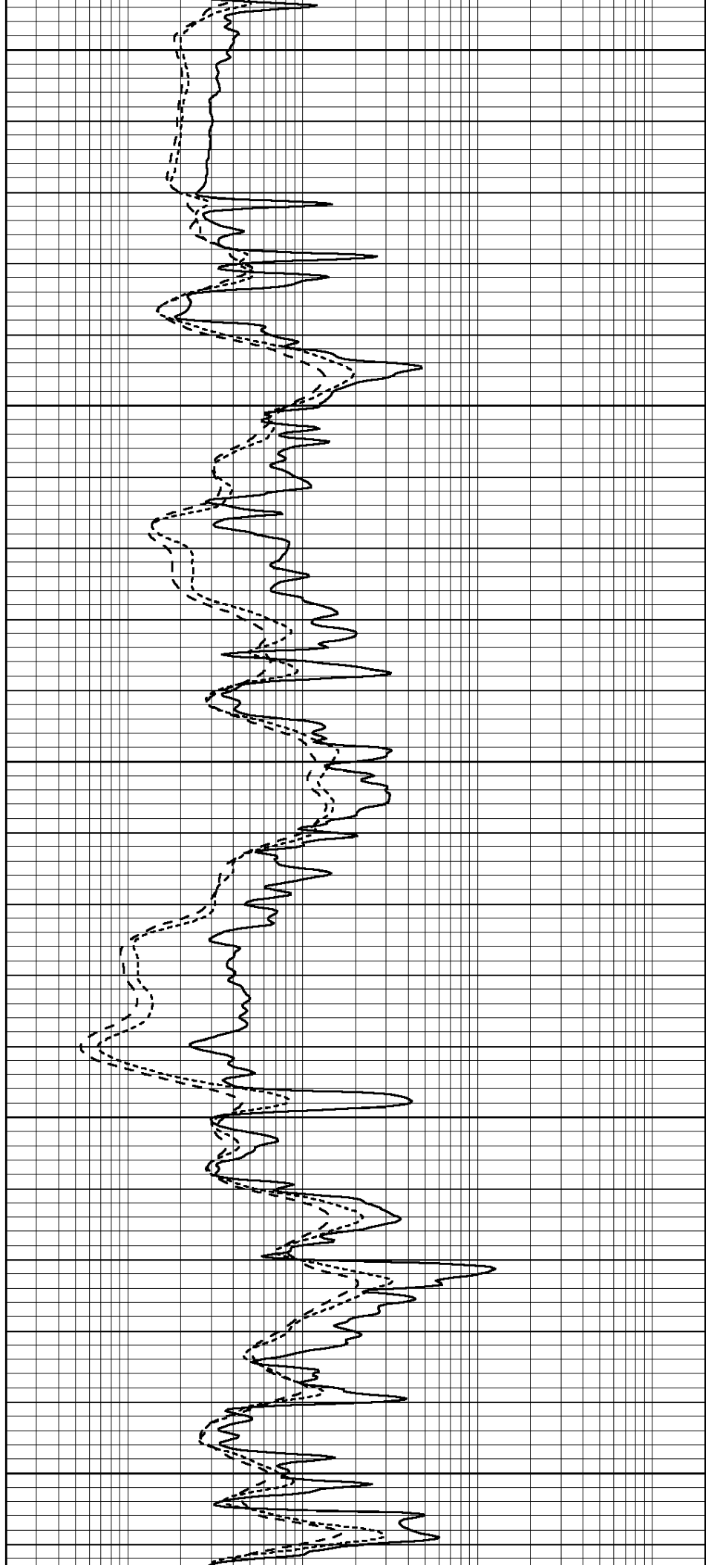
3300

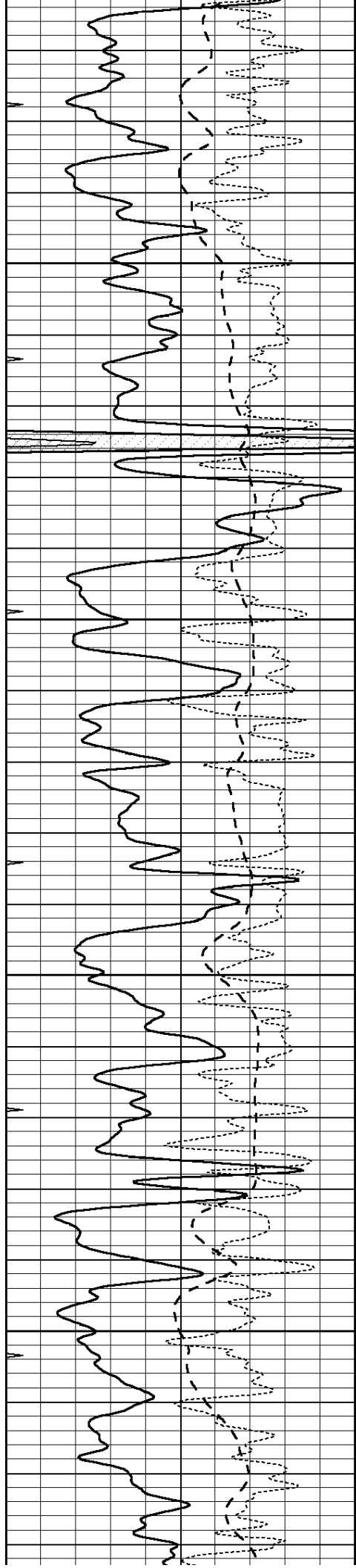
3350

3400

3450

3500



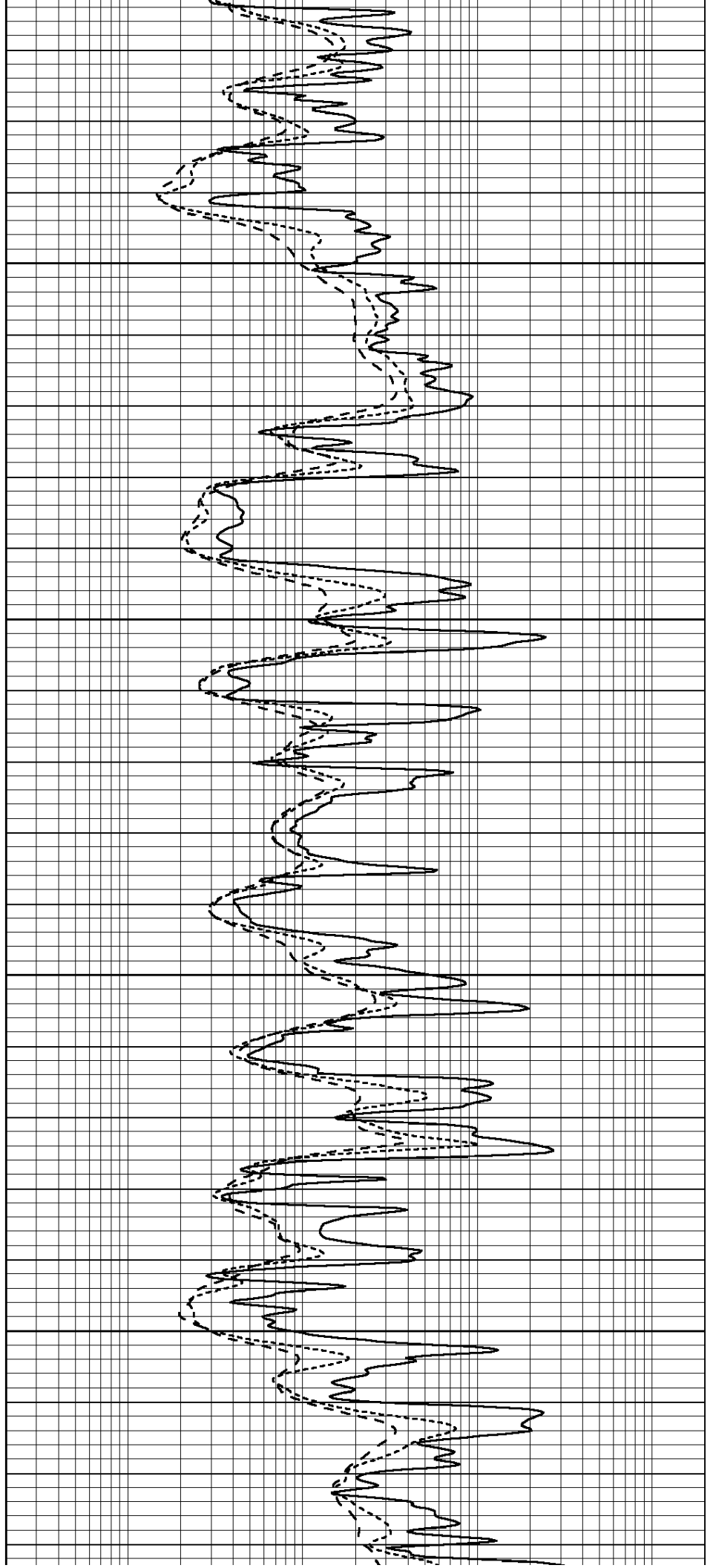


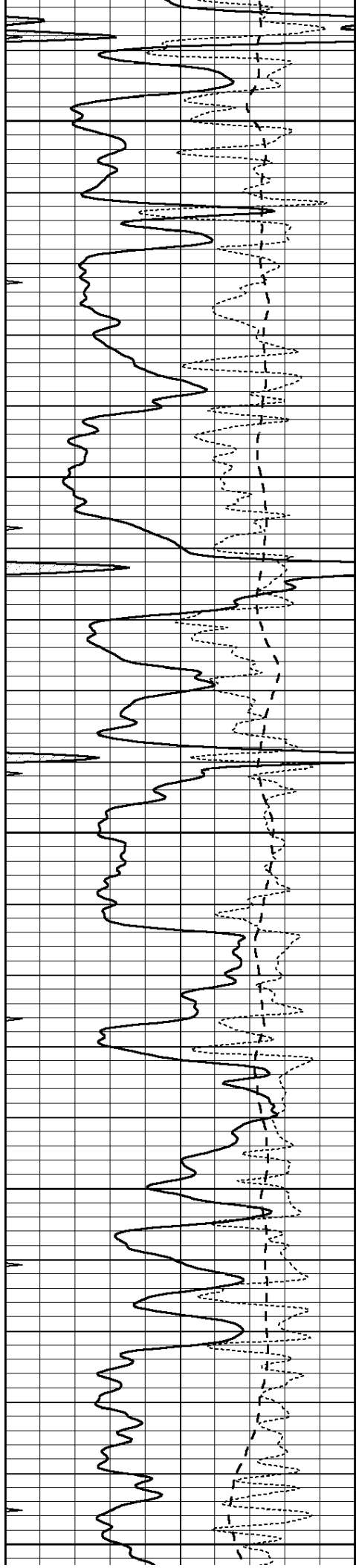
3550

3600

3650

3700





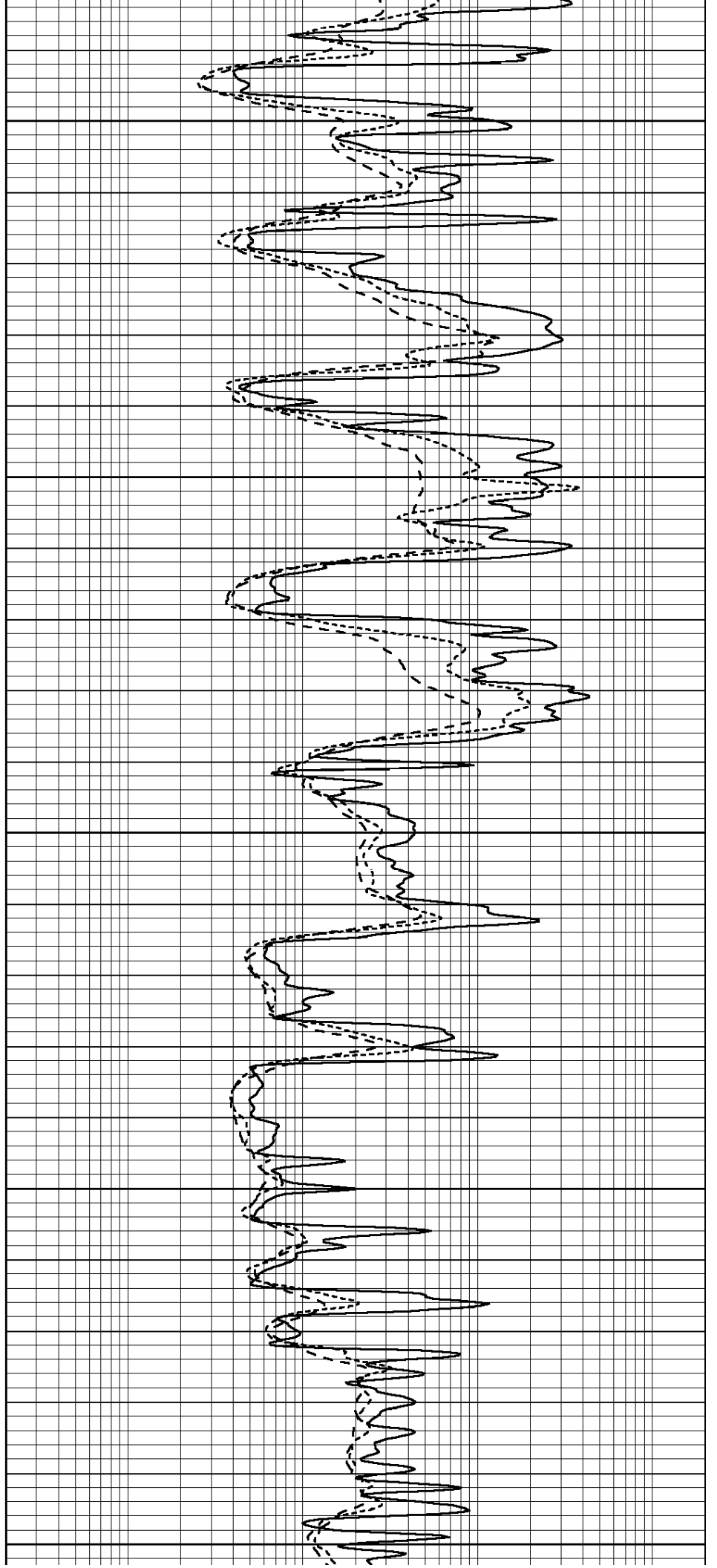
3750

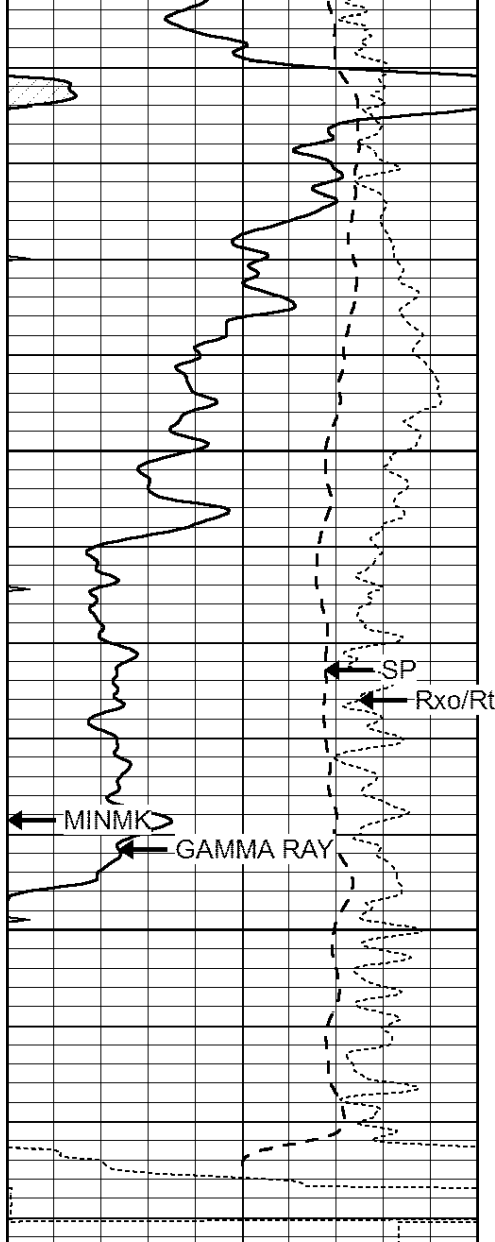
3800

3850

3900

3950



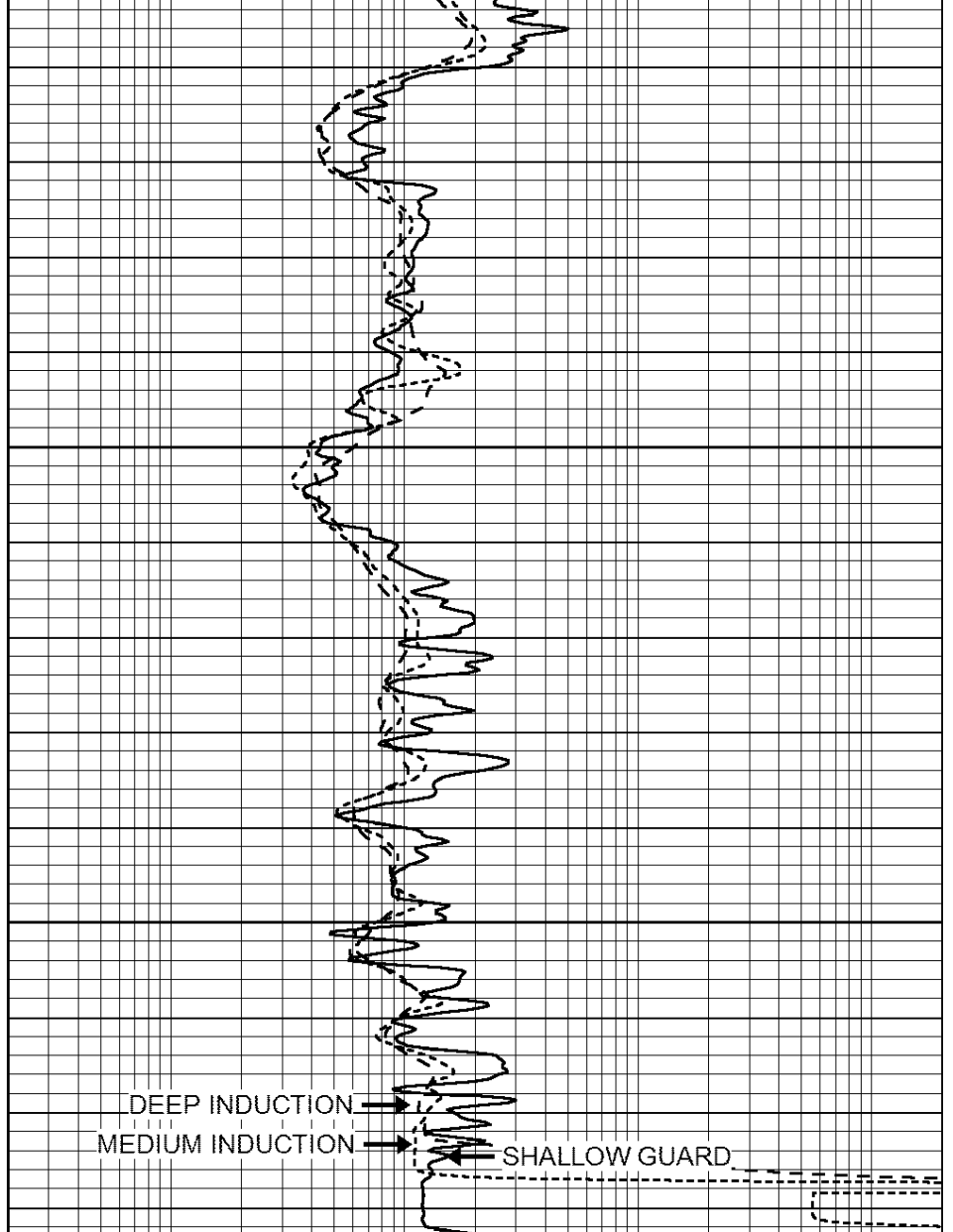


0	GAMMA RAY (GAPI)	150
-100	SP (mV)	100
-250	Rxo/Rt	50
0	MINMK	20

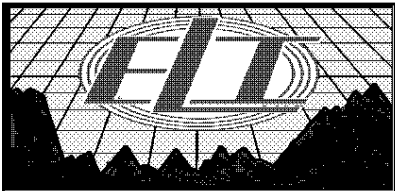
4000

4050

LTD 4077



0.2	SHALLOW GUARD (Ohm-m)	2000
0.2	DEEP INDUCTION (Ohm-m)	2000
0.2	MEDIUM INDUCTION (Ohm-m)	2000

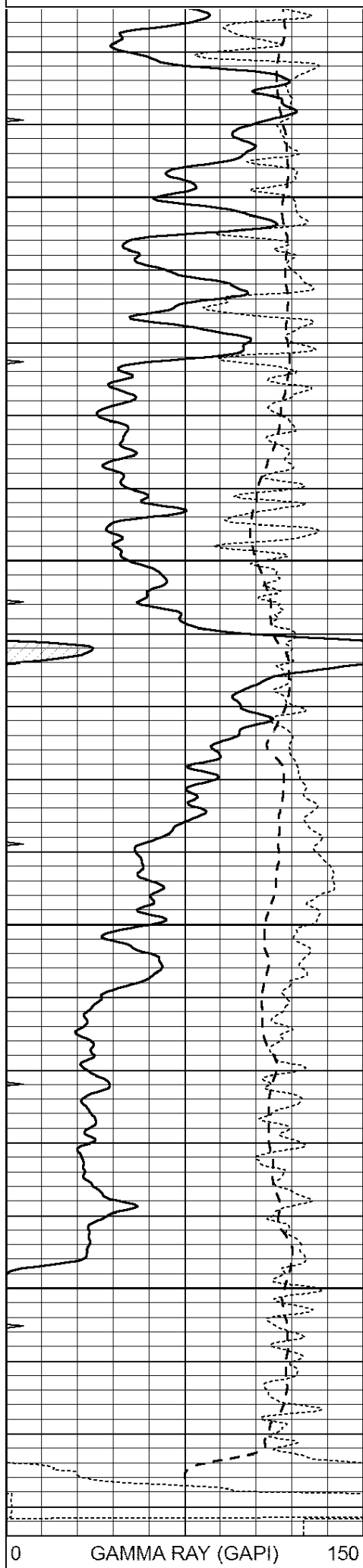


REPEAT SECTION

Database File: 2680ddn.db
 Dataset Pathname: pass2.1
 Presentation Format: _dil
 Dataset Creation: Fri May 25 01:53:03 2018 by Calc Open-Cased 090629
 Charted by: Depth in Feet scaled 1:240

0	GAMMA RAY (GAPI)	150
-100	SP (mV)	100
-250	Rxo/Rt	50
0	MINMK	20

0.2	SHALLOW GUARD (Ohm-m)	2000
0.2	DEEP INDUCTION (Ohm-m)	2000
0.2	MEDIUM INDUCTION (Ohm-m)	2000



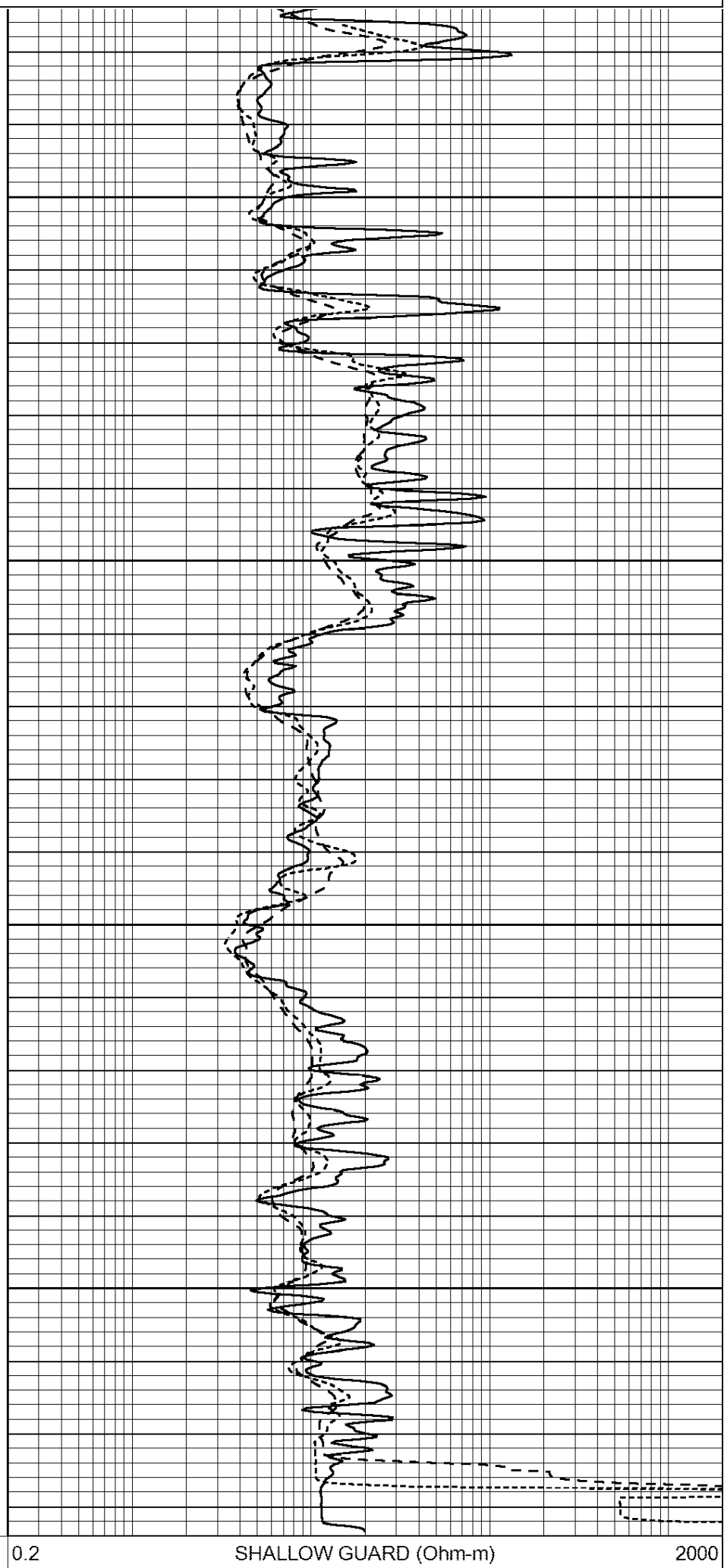
3900

3950

4000

4050

0 GAMMA RAY (GAPI) 150



0.2 SHALLOW GUARD (Ohm-m) 2000

-100	SP (mV)	100
-250	Rxo/Rt	50
0	MINMK	20

0.2	DEEP INDUCTION (Ohm-m)	2000
0.2	MEDIUM INDUCTION (Ohm-m)	2000

Calibration Report

Database File: pe2.db
Dataset Pathname: pass2
Dataset Creation: Mon Aug 21 11:58:02 2017 by Log Open-Cased 090629

Dual Induction Calibration Report

Serial-Model: PROBE8-DILG
Surface Cal Performed: Mon Aug 21 11:58:18 2017
Downhole Cal Performed: Mon Aug 21 11:58:21 2017
After Survey Verification Performed: Mon Aug 21 11:58:23 2017

Surface Calibration

Loop:	Readings				References		Results	
	Air	Loop			Air	Loop	m	b
Deep	0.015	0.648	V	0.000	400.000	mmho/m	620.000	0.000
Medium	0.029	0.796	V	0.000	464.000	mmho/m	590.000	-12.000
Internal:	Zero	Cal		Zero	Cal		m	b
Deep	0.017	0.657	V	0.000	400.000	mmho/m	625.153	-10.619
Medium	0.016	0.757	V	0.000	464.000	mmho/m	625.992	-9.739

Downhole Calibration

	Readings				References		Results	
	Zero	Cal			Zero	Cal	m'	b'
Deep	0.000	0.000	mmho/m	2.011	405.777	mmho/m	1.000	0.000
Medium	0.000	0.000	mmho/m	7.590	503.393	mmho/m	1.000	0.000
LL3		7.500	V		1500.000	Ohm-m		
		0.000	V		20.000	Ohm-m		
		-7.200	V		3800.000	mmho-m		

After Survey Verification

	Readings				Targets		Results	
	Zero	Cal			Zero	Cal	m'	b'
Deep	0.000	0.000	mmho/m	0.000	0.000	mmho/m	0.000	0.000
Medium	0.000	0.000	mmho/m	0.000	0.000	mmho/m	0.000	0.000
LL3		1.000	Ohm-m		1.000	Ohm-m		
		0.000	Ohm-m		0.000	Ohm-m		
		1.000	mmho-m		1.000	mmho-m		

Litho Density Calibration Report

Serial: 002 Model: PRB

Master Calibration

Performed Mon Aug 21 11:56:41 2017

	Background	Magnesium	Aluminum	Sandstone	
Window 1	833.6	7394.2	2287.3	8111.8	cps
Window 2	768.9	6322.3	1995.6	6800.0	cps
Window 3	621.5	3261.9	1186.4	3380.9	cps
Window 4	184.2	185.7	184.9	184.8	cps
Long Space	0.0	5553.4	1226.6	6031.1	cps
Short Space	1.2	1307.5	903.9	1387.7	cps
Rho		1.7100	2.5900	1.3800	g/cc

Pe		0.0000	2.5700	1.5500	
Rib Angle	: 46.3	Rib Slope	: 1.045	Density/Spine Ratio	: 0.566
Spine Angle	: 76.3	Spine Slope	: 4.090	Spine Intercept	: -20.7

Before Survey Verification

Performed Wed Dec 31 18:00:00 1969

Window 1	0.0	0.0	0.0	0.0	cps
Window 2	0.0	0.0	0.0	0.0	cps
Window 3	0.0	0.0	0.0	0.0	cps
Window 4	0.0	0.0	0.0	0.0	cps
Long Space	0.0	0.0	0.0	0.0	cps
Short Space	0.0	0.0	0.0	0.0	cps
Measured Rho		0.0000	0.0000	0.0000	g/cc
Measured Correction		0.0000	0.0000	0.0000	g/cc
Measured Pe			0.0000	0.0000	

After Survey Verification

Performed Wed Dec 31 18:00:00 1969

Window 1	0.0	0.0	0.0	0.0	cps
Window 2	0.0	0.0	0.0	0.0	cps
Window 3	0.0	0.0	0.0	0.0	cps
Window 4	0.0	0.0	0.0	0.0	cps
Long Space	0.0	0.0	0.0	0.0	cps
Short Space	0.0	0.0	0.0	0.0	cps
Measured Rho		0.0000	0.0000	0.0000	g/cc
Measured Correction		0.0000	0.0000	0.0000	g/cc
Measured Pe			0.0000	0.0000	

Compensated Neutron Calibration Report

Serial Number: 6I
Tool Model: G

CALIBRATION

Detector	Readings	Target	Normalization
Short Space	1.00 cps	1.00 cps	1.0000
Long Space	1.00 cps	1.00 cps	1.0000

PRE-SURVEY VERIFICATION

	Detector	Readings	Measured	Target
1)	Short Space	cps		
	Long Space	cps	pu	pu
2)	Short Space	cps		
	Long Space	cps	pu	
3)	Short Space	cps		
	Long Space	cps	pu	

POST-SURVEY VERIFICATION

	Detector	Readings	Measured	Target
1)	Short Space	cps		
	Long Space	cps	pu	pu
2)	Short Space	cps		

2)	Short Space Long Space	cps cps	pu pu	pu pu
3)	Short Space Long Space	cps cps	pu pu	pu pu

Gamma Ray Calibration Report

Serial Number:	GR6	
Tool Model:	OPEN	
Performed:	Mon Aug 21 11:59:01 2017	
Calibrator Value:	150.0	GAPI
Background Reading:	0.0	cps
Calibrator Reading:	276.0	cps
Sensitivity:	0.5500	GAPI/cps