



# SONIC LOG

Company DOWNING-NELSON OIL CO., INC.  
 Well FRANK SCHNELLER #2-25  
 Field SCHNELLER  
 County TREGO State KANSAS

Location: API # : 15-195-23041-00-00  
 2300 FNL & 335 FEL  
 SEC 25 TWP 13S RGE 21W  
 Permanent Datum GROUND LEVEL Elevation 2318'  
 Log Measured From KELLY BUSHING 8' A.G.L.  
 Drilling Measured From KELLY BUSHING  
 Other Services CDL/CNL/DIL MEL  
 Elevation K.B. 2326  
 D.F. 2324  
 G.L. 2318

Date	05/25/18
Run Number	TWO
Depth Driller	4076
Depth Logger	4077
Bottom Logged Interval	4068
Top Log Interval	50
Casing Driller	8 5/8@ 220
Casing Logger	220
Bit Size	7 7/8"
Type Fluid in Hole	CHEMICAL MUD
Density / Viscosity	9.2/53
pH / Fluid Loss	9.5/10.0
Source of Sample	FLOWLINE
Rm @ Meas. Temp	1.0@80
Rmt @ Meas. Temp	.75@80
Rmc @ Meas. Temp	1.2@80
Source of Rmf / Rmc	MEASURED
Rm @ BHT	.68@117
Time Circulation Stopped	2 HOURS
Time Logger on Bottom	///
Maximum Recorded Temperature	117F
Equipment Number	4010
Location	HAYS, KANSAS
Recorded By	GUS PFANENSTIEL
Witnessed By	MARC DOWNING

<<< Fold Here >>>

All interpretations are opinions based on inferences from electrical or other measurements and we cannot and do not guarantee the accuracy or correctness of any interpretation, and we shall not, except in the case of gross or willful negligence on our part, be liable or responsible for any loss, costs, damages, or expenses incurred or sustained by anyone resulting from any interpretation made by any of our officers, agents or employees. These interpretations are also subject to our general terms and conditions set out in our current Price Schedule.

### Comments

THANK YOU FOR USING ELI WIRELINE, HAYS, KS. (785) 628-6395

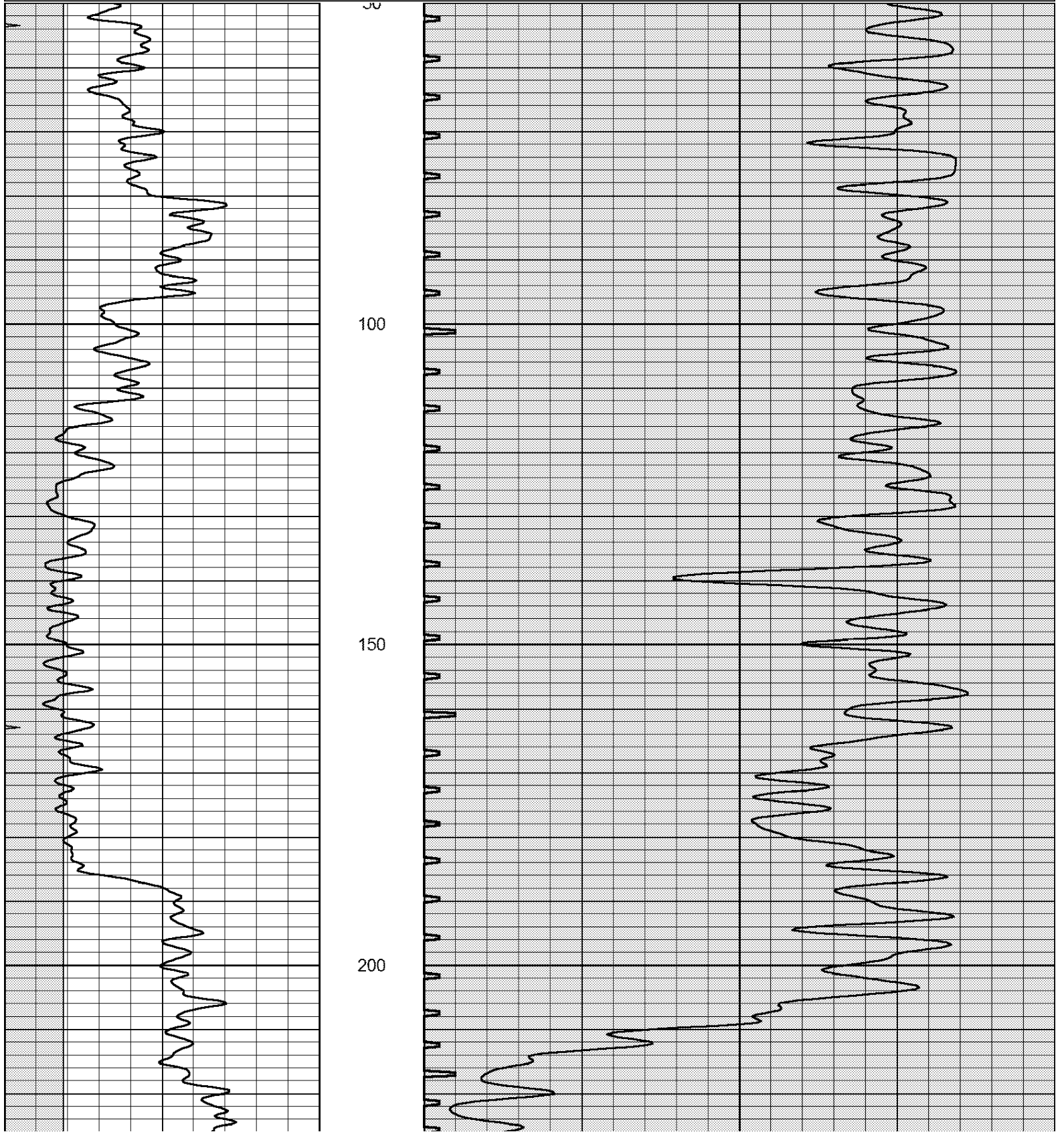
DIRECTIONS  
 1 SOUTH ON ELLIS BLACKTOP, 2 WEST, 1 1/2 SOUTH,  
 WEST INTO

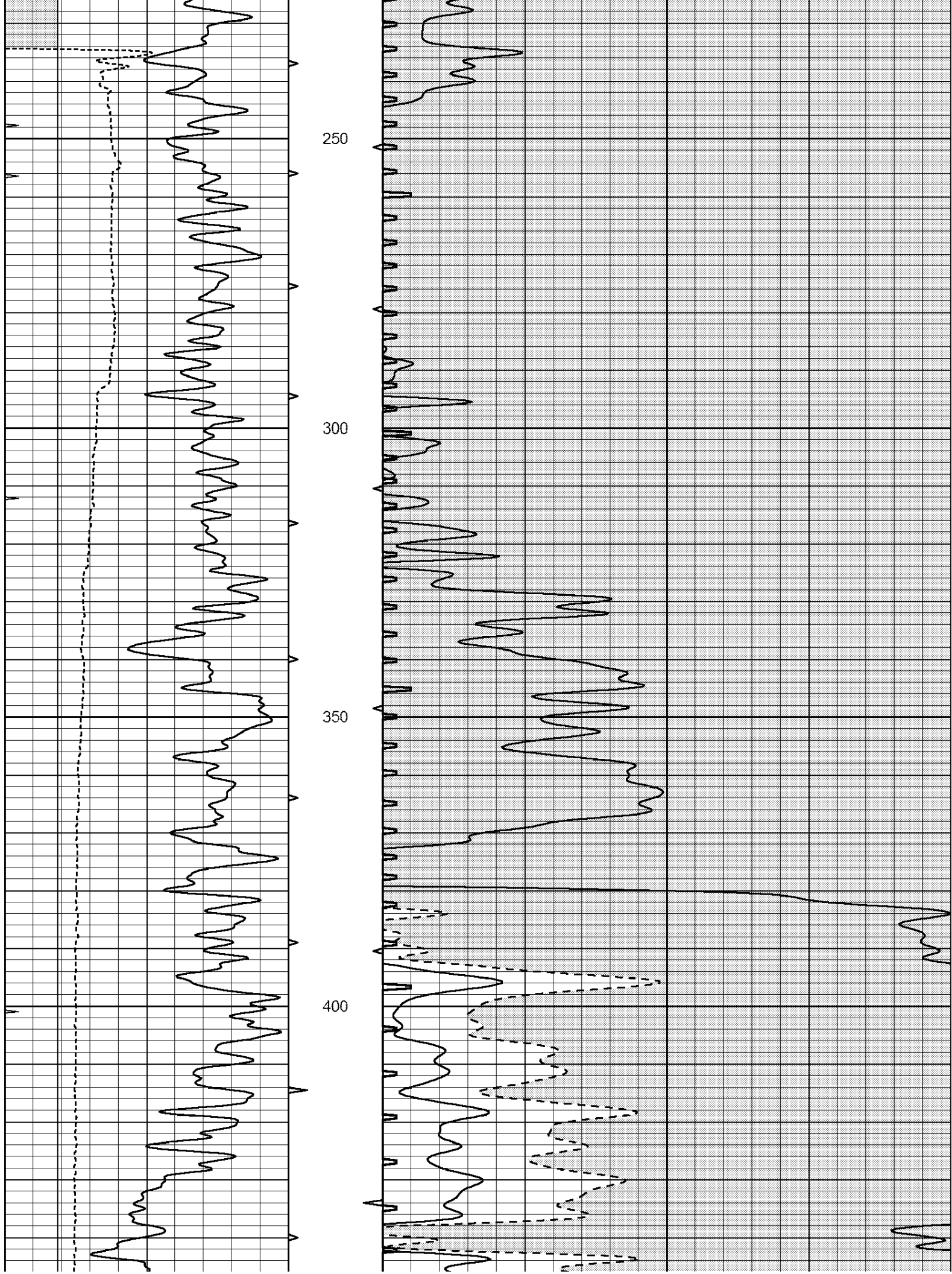


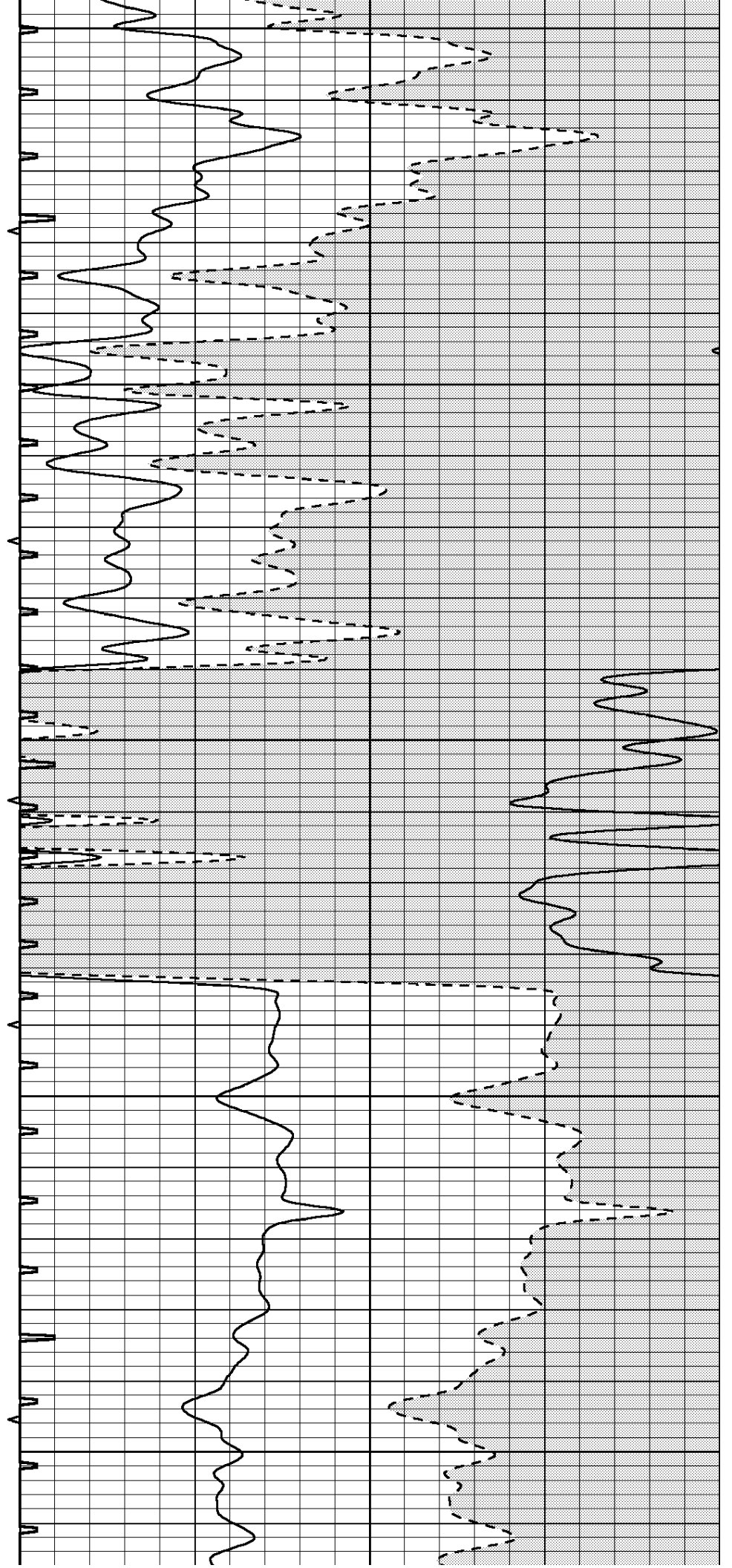
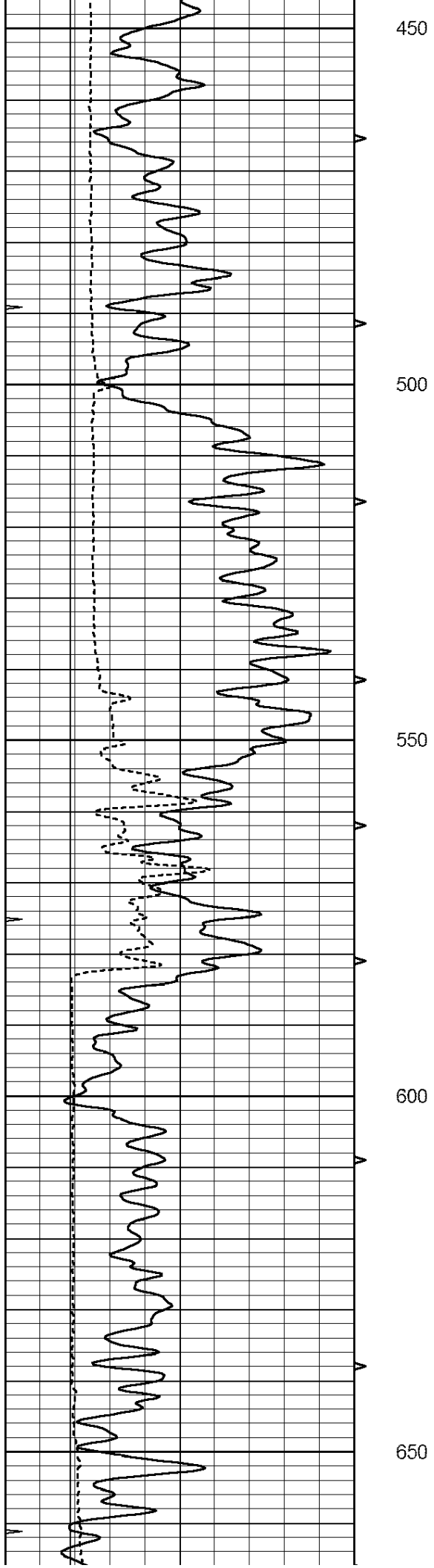
# MAIN PASS

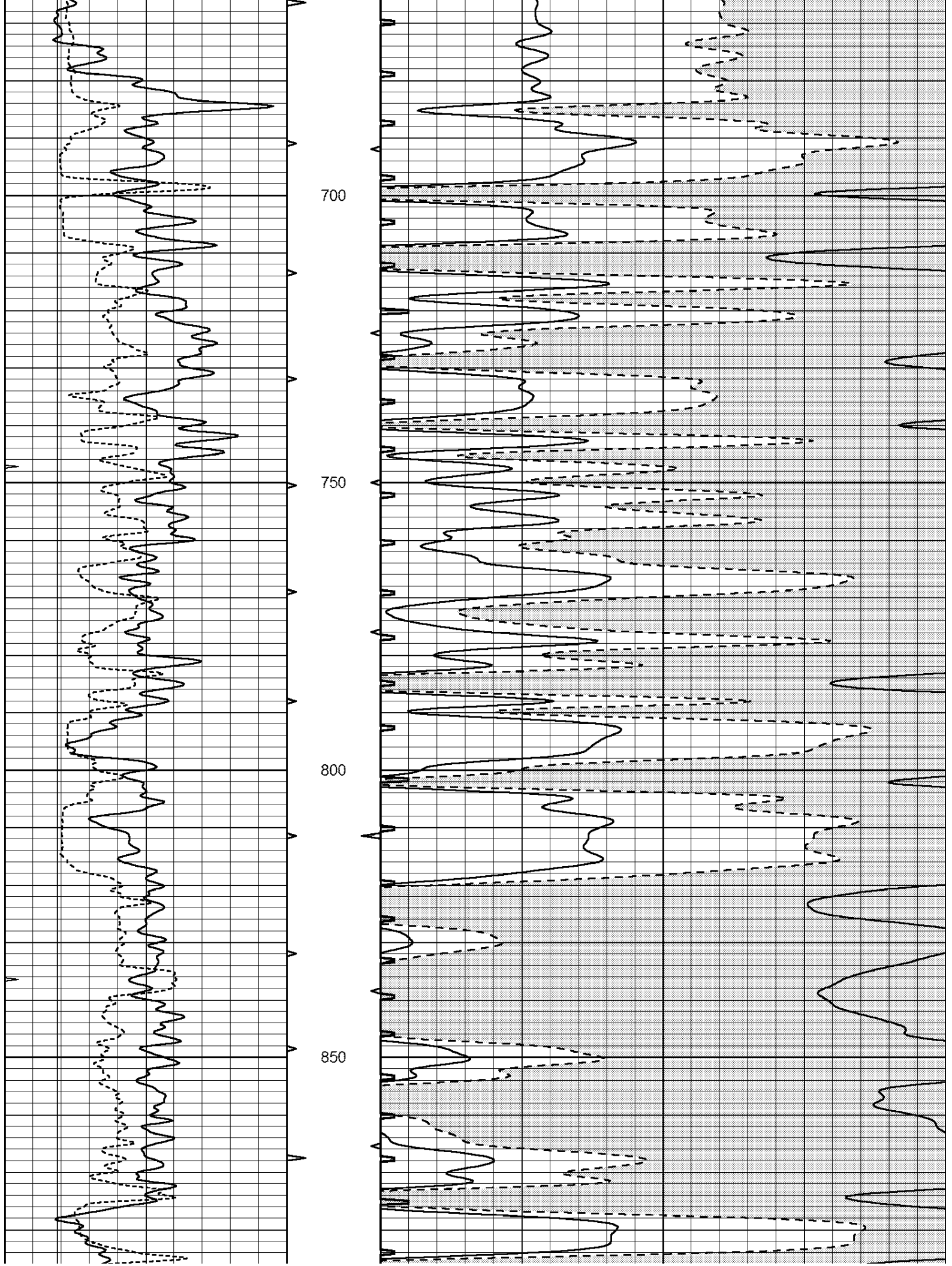
Database File: 2680ddn.db  
 Dataset Pathname: pass5  
 Presentation Format: \_slt  
 Dataset Creation: Fri May 25 03:08:42 2018 by Log Open-Cased 090629  
 Charted by: Depth in Feet scaled 1:240

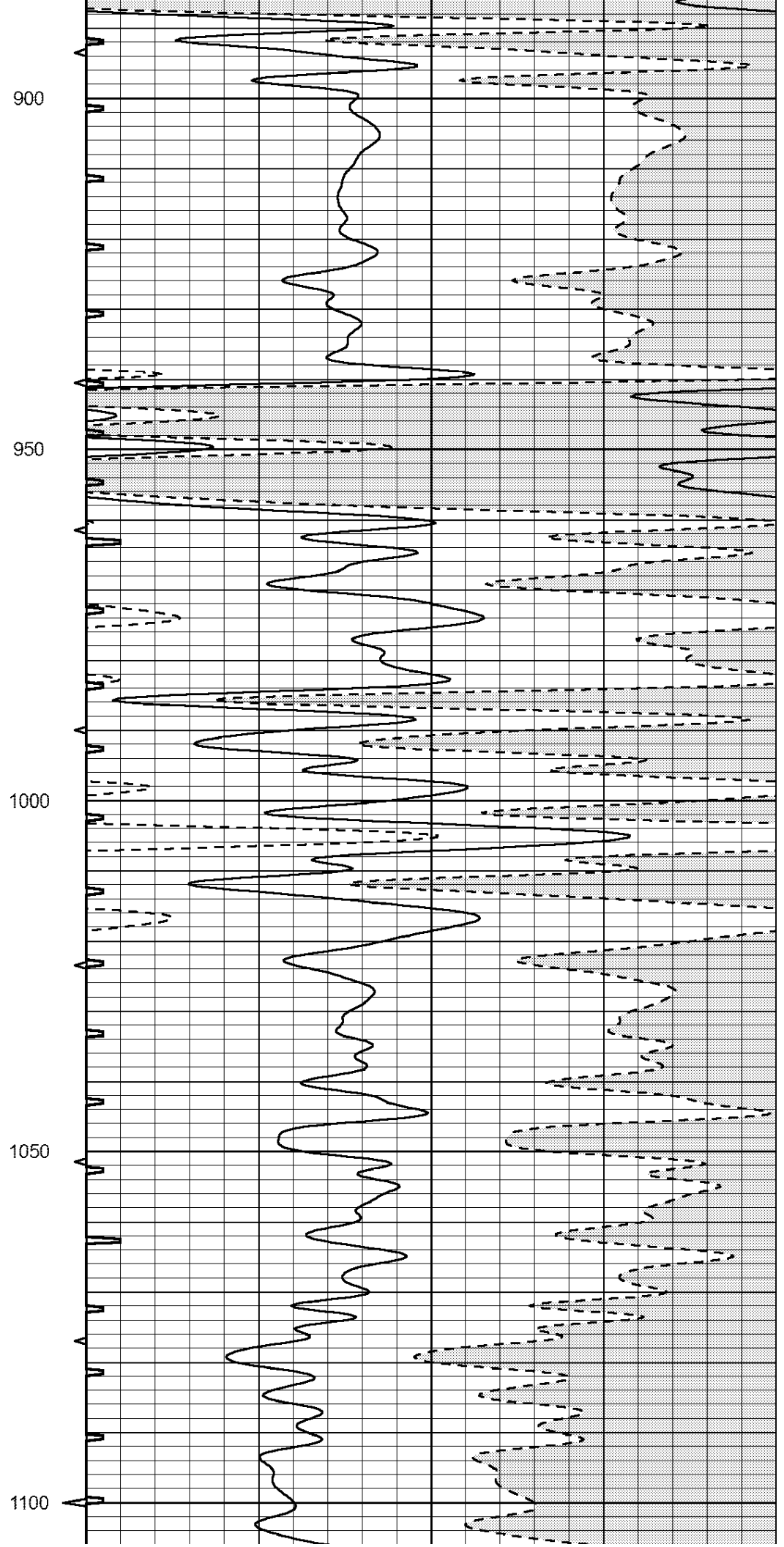
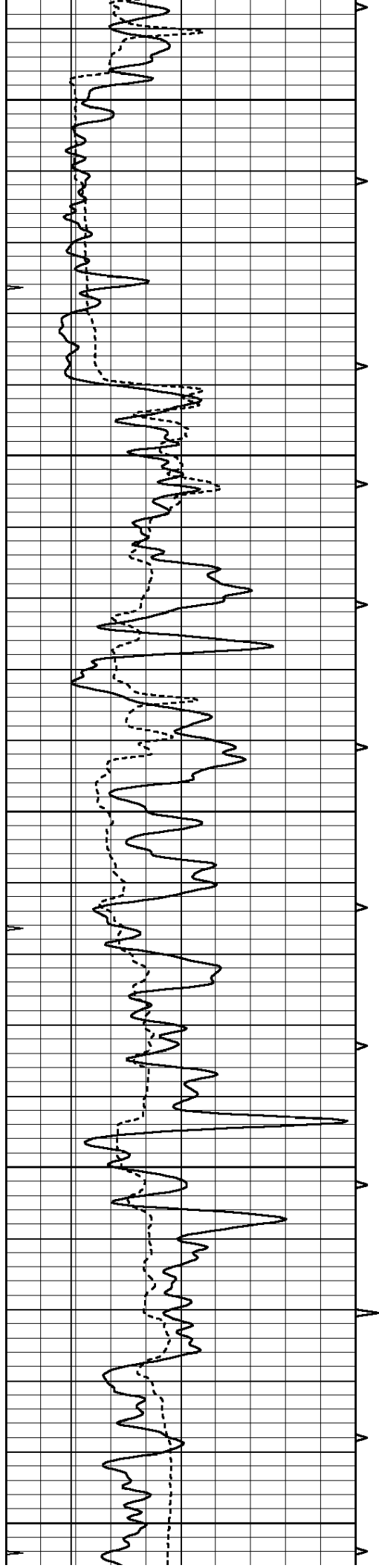
0	GAMMA RAY (GAPI)	150	ABHV	140	DELTA TIME (usec/ft)	40
6	CALIPER (in)	16	10 (ft3) 0	30	SONIC POROSITY (pu)	-10
0	MINMK	20	TBHV	0	ITT (msec)	20
			0 (ft3) 10			

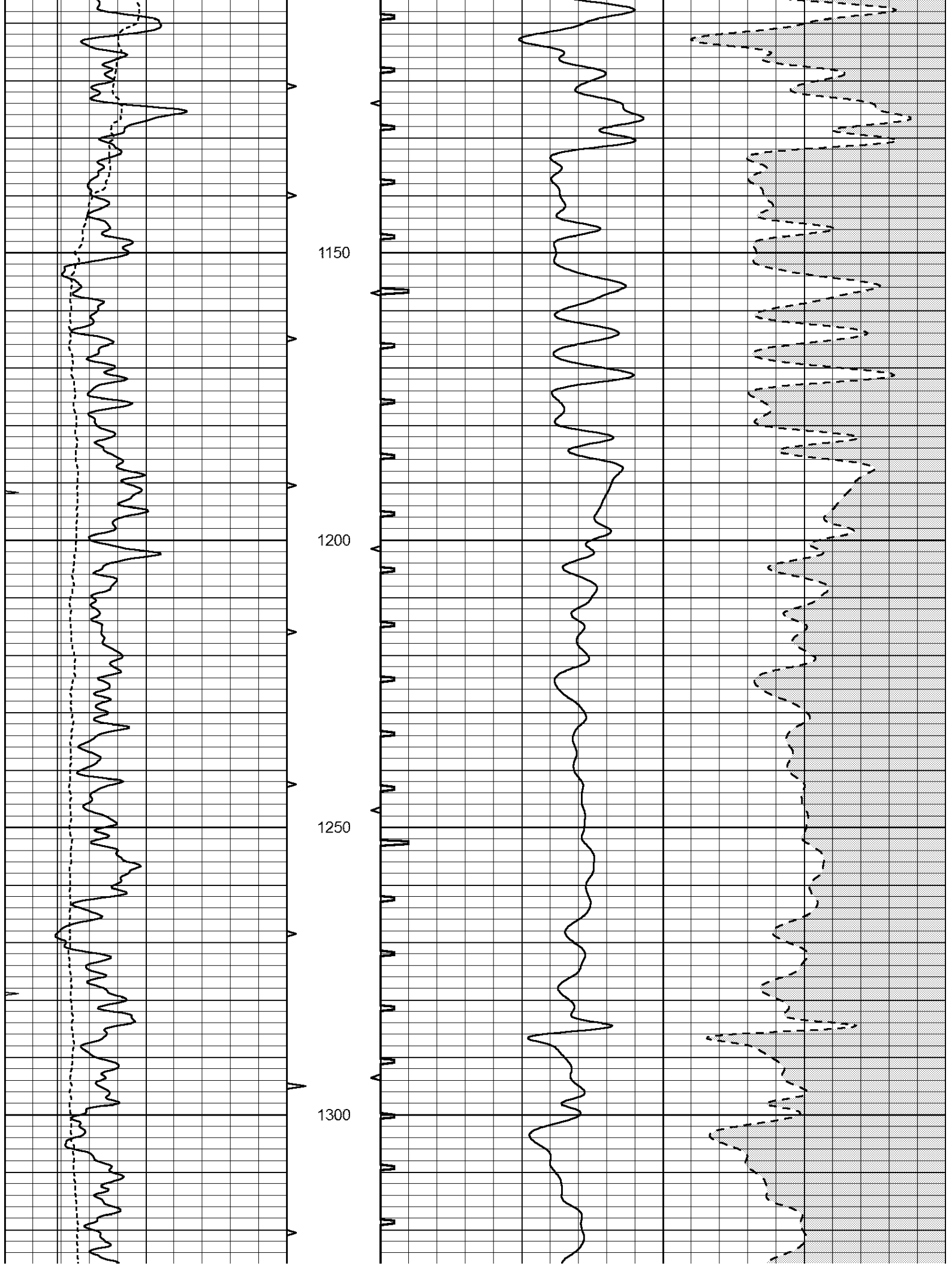


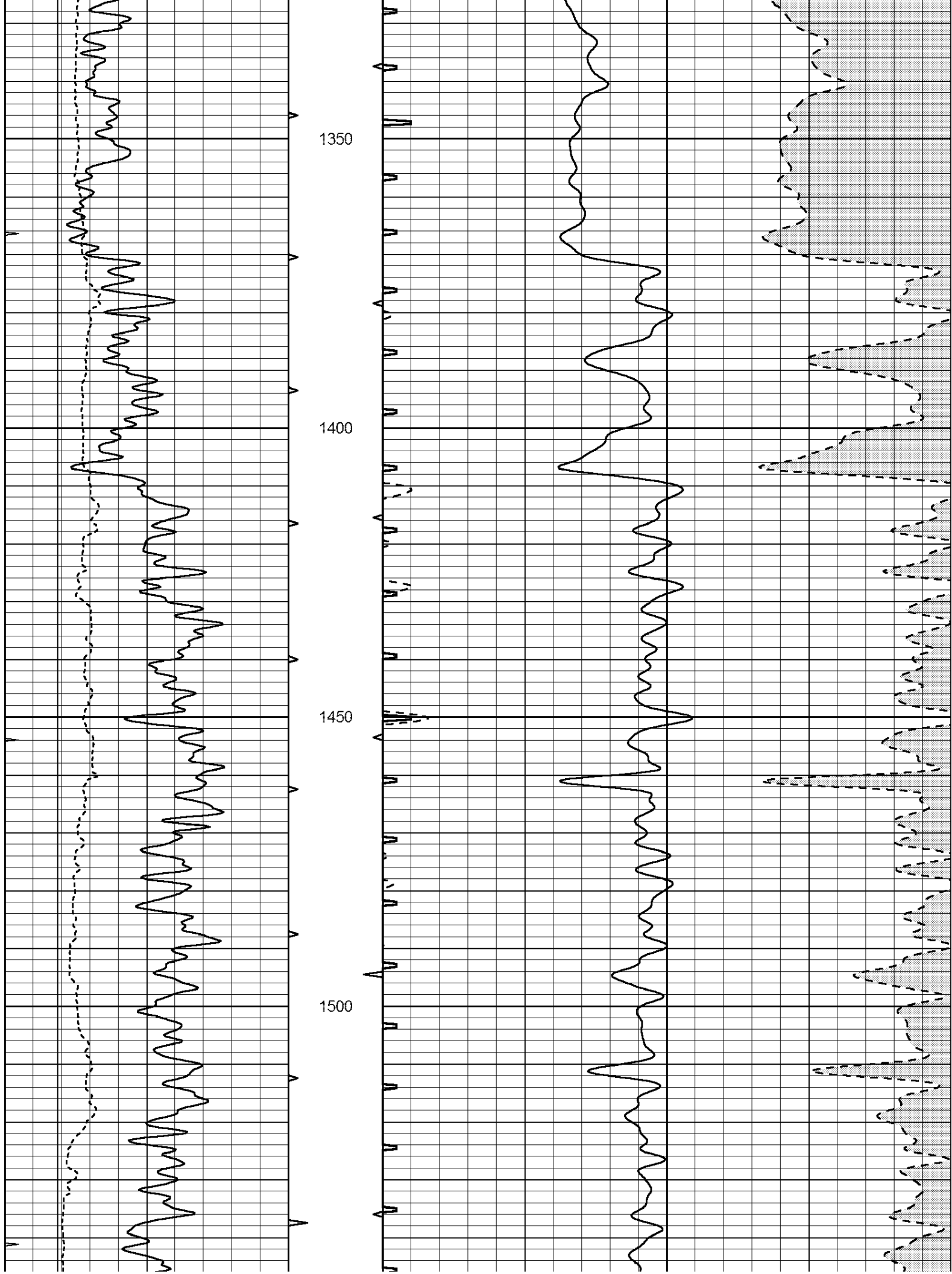


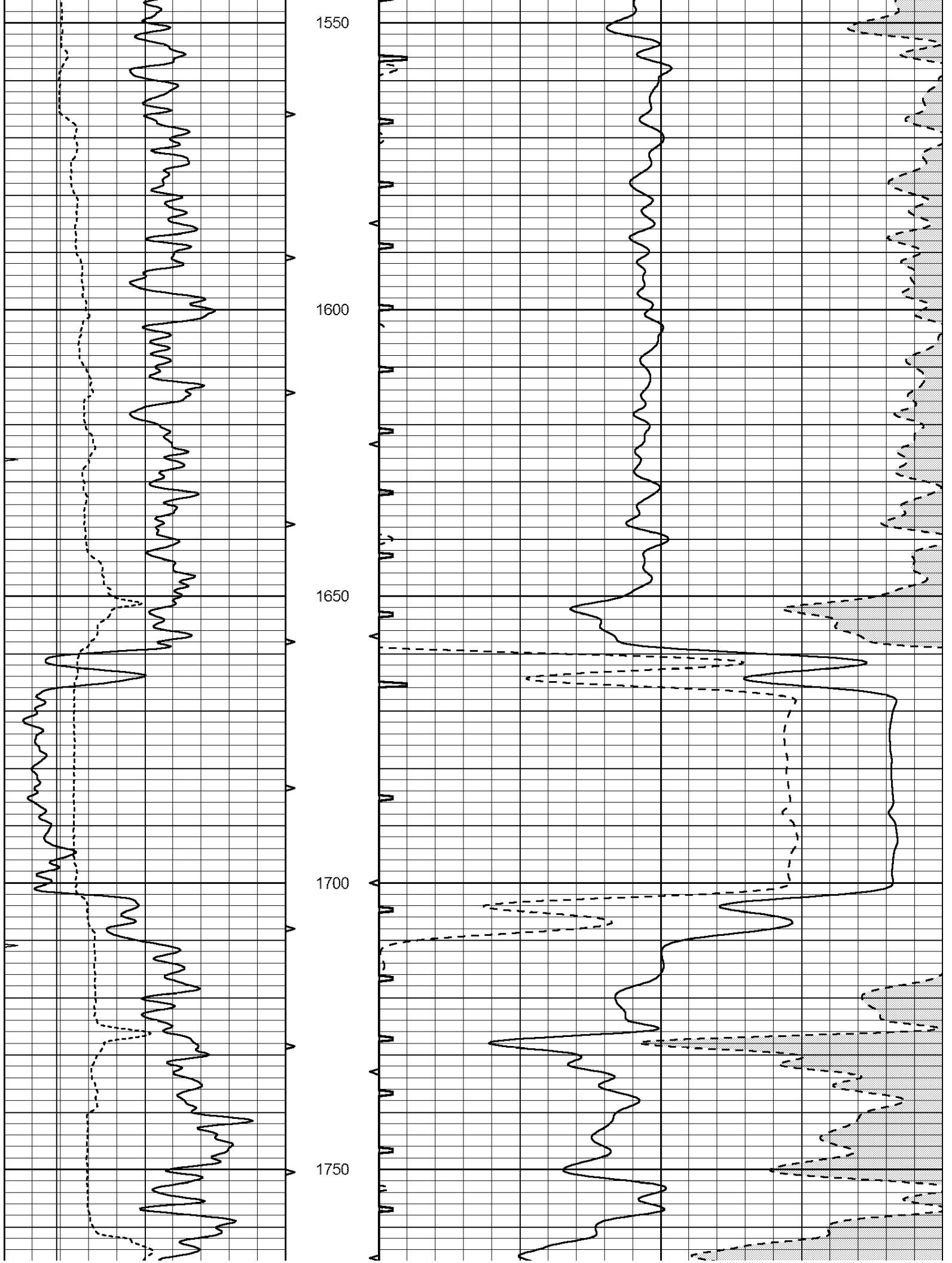


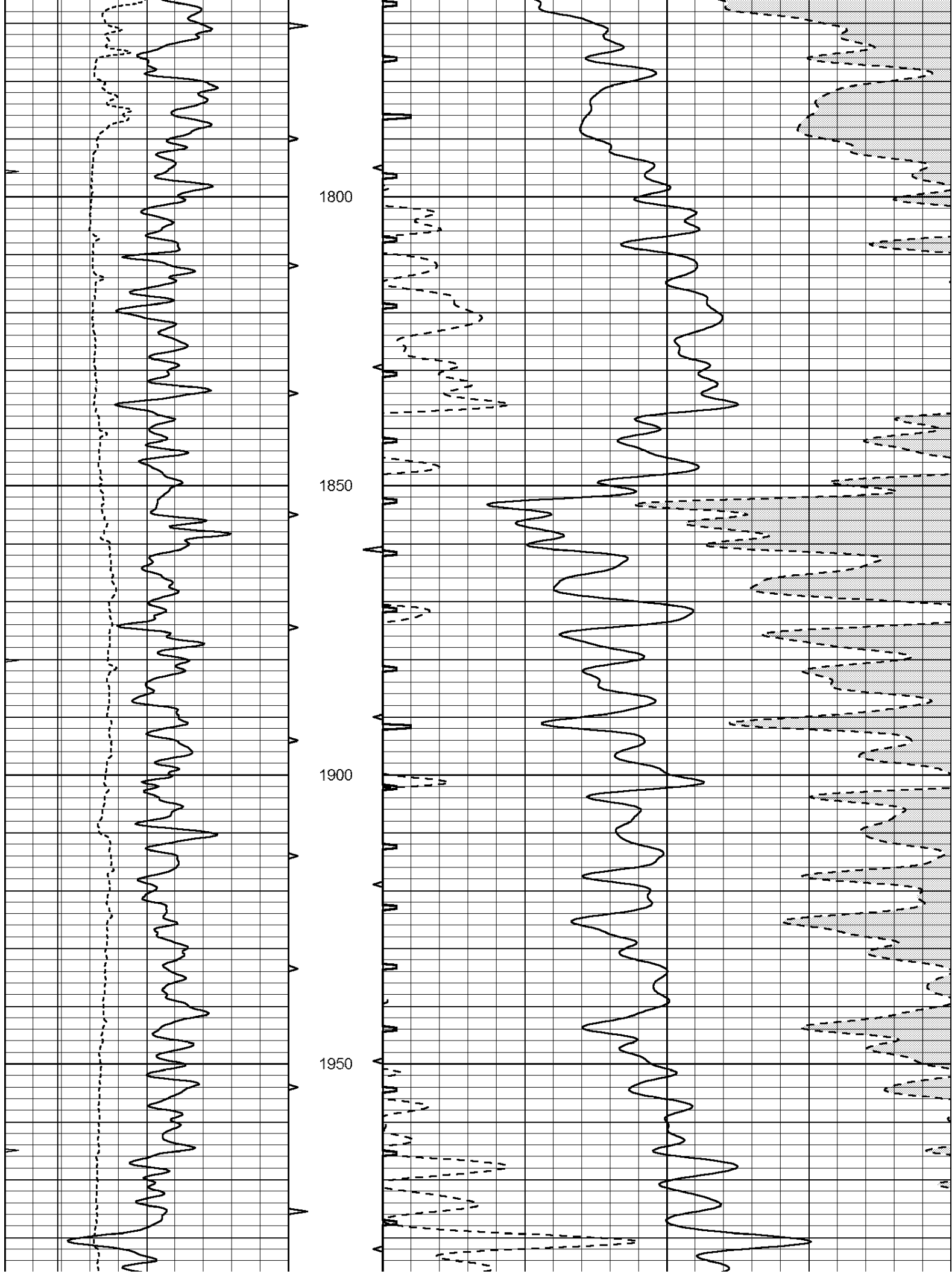


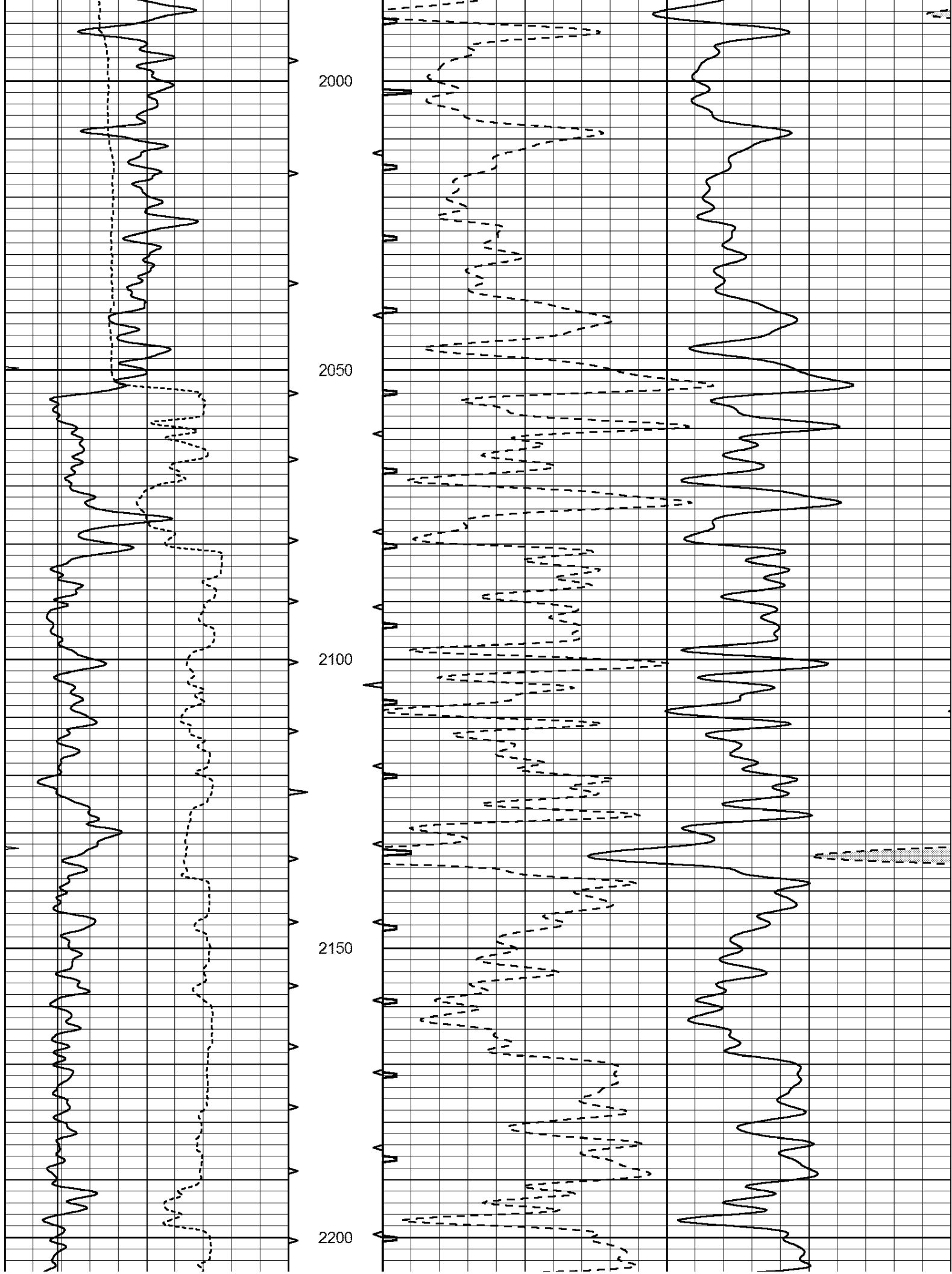


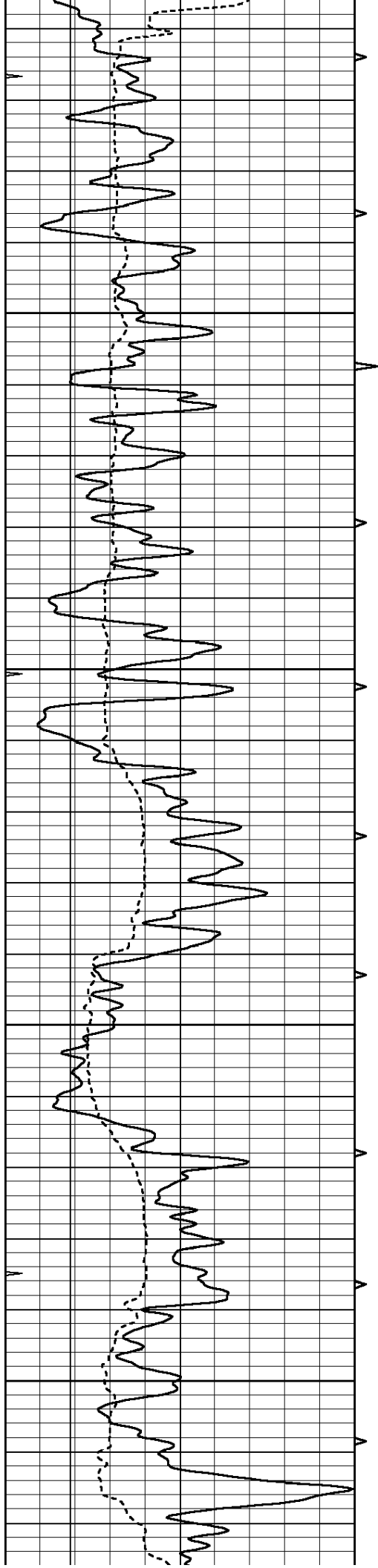










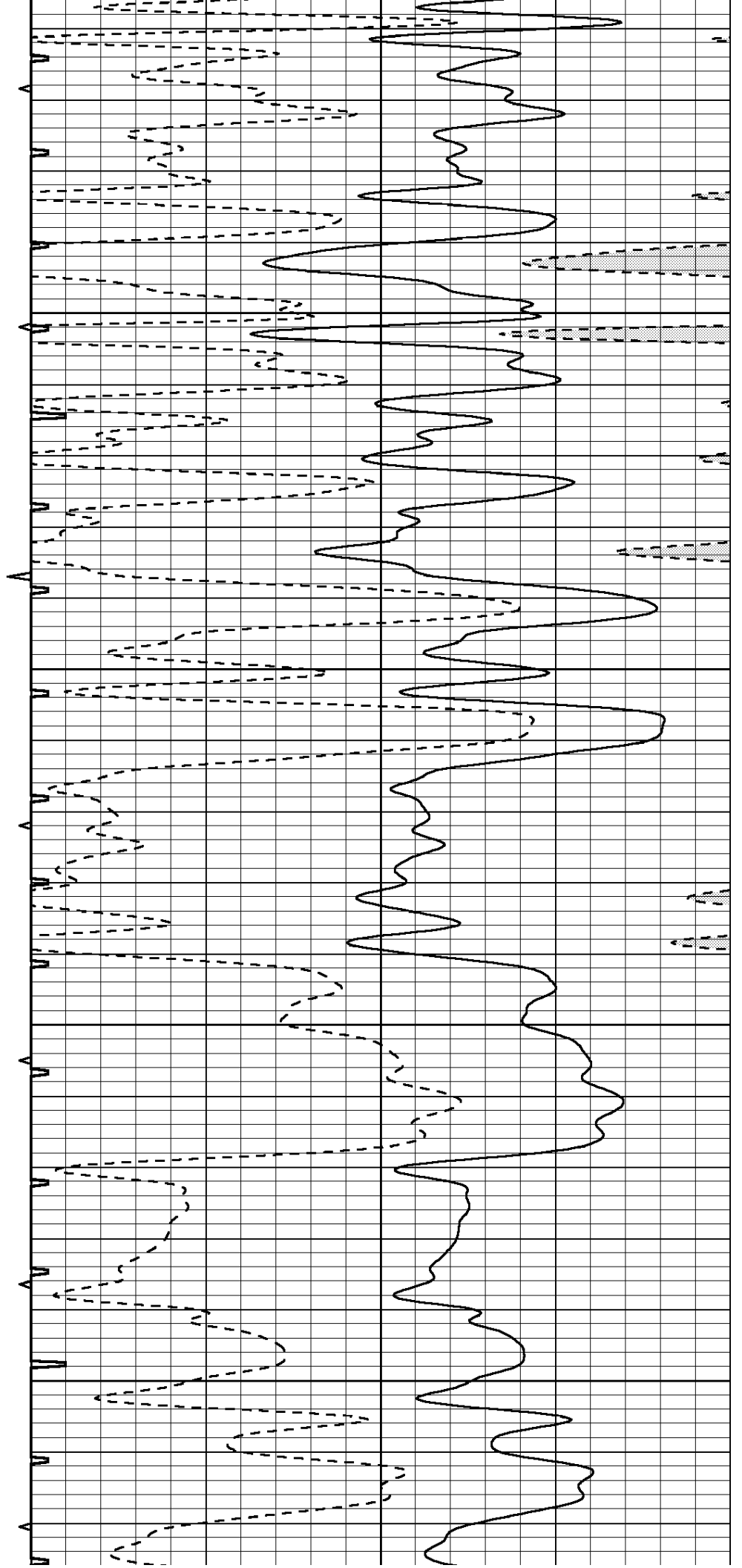


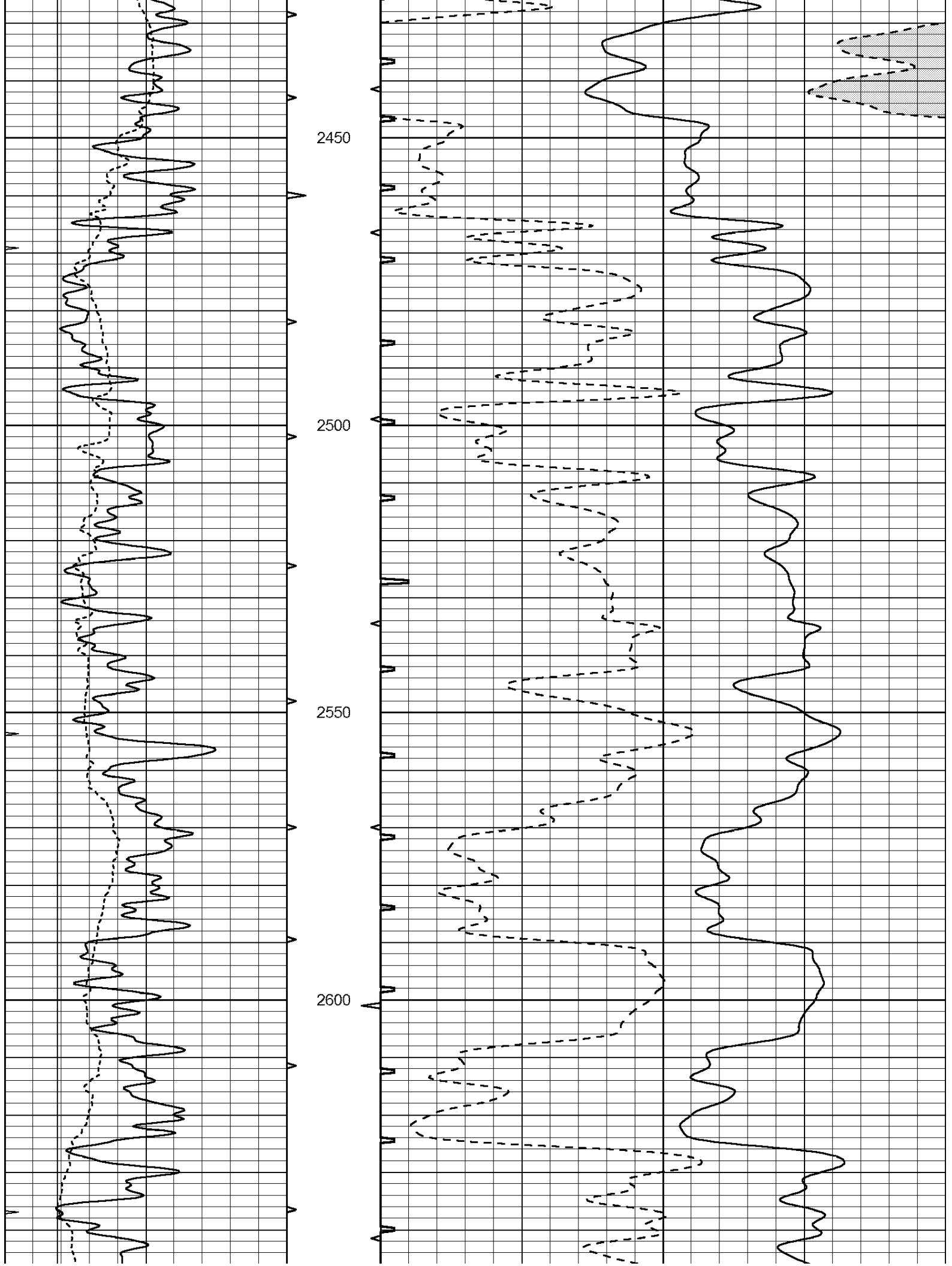
2250

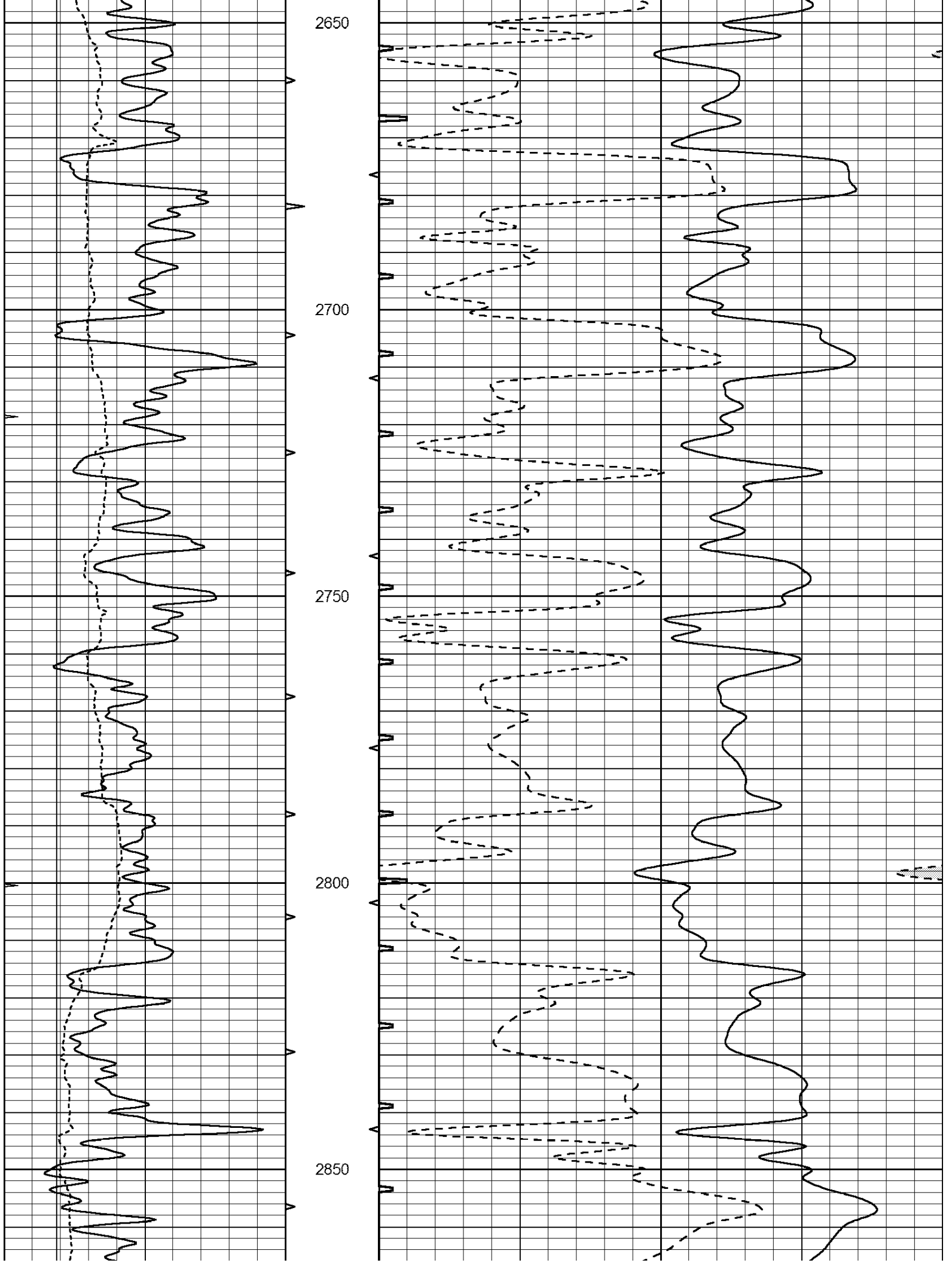
2300

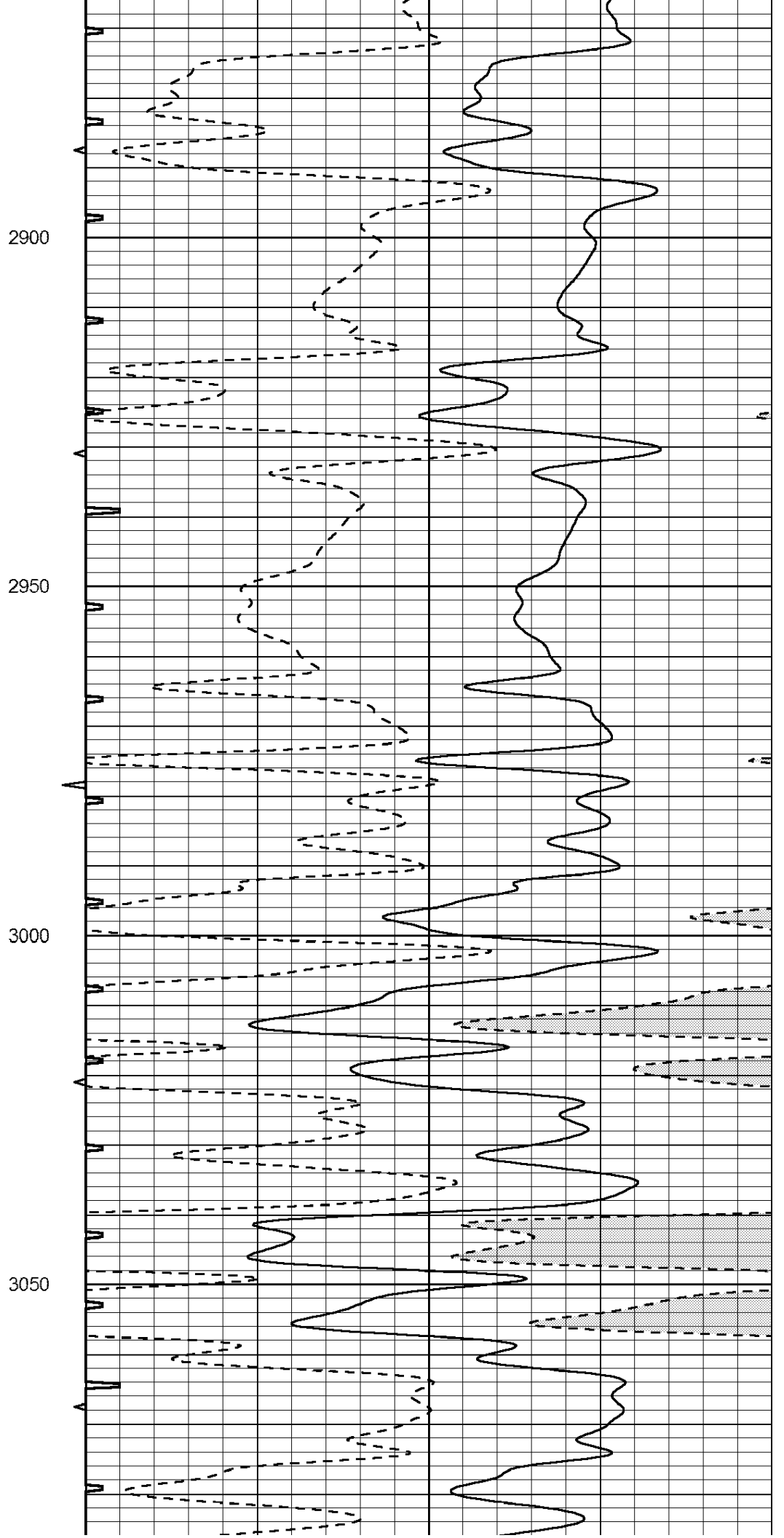
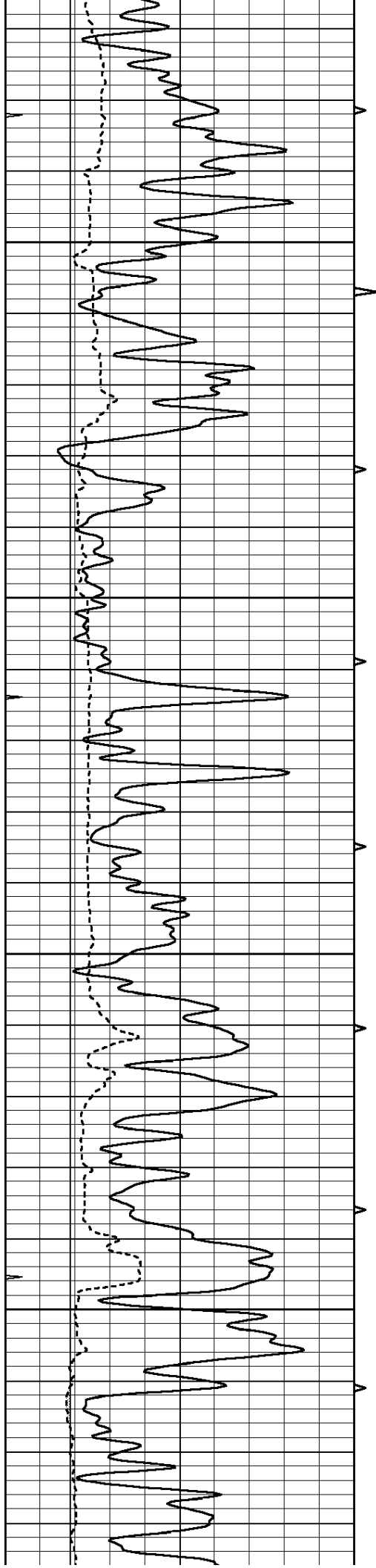
2350

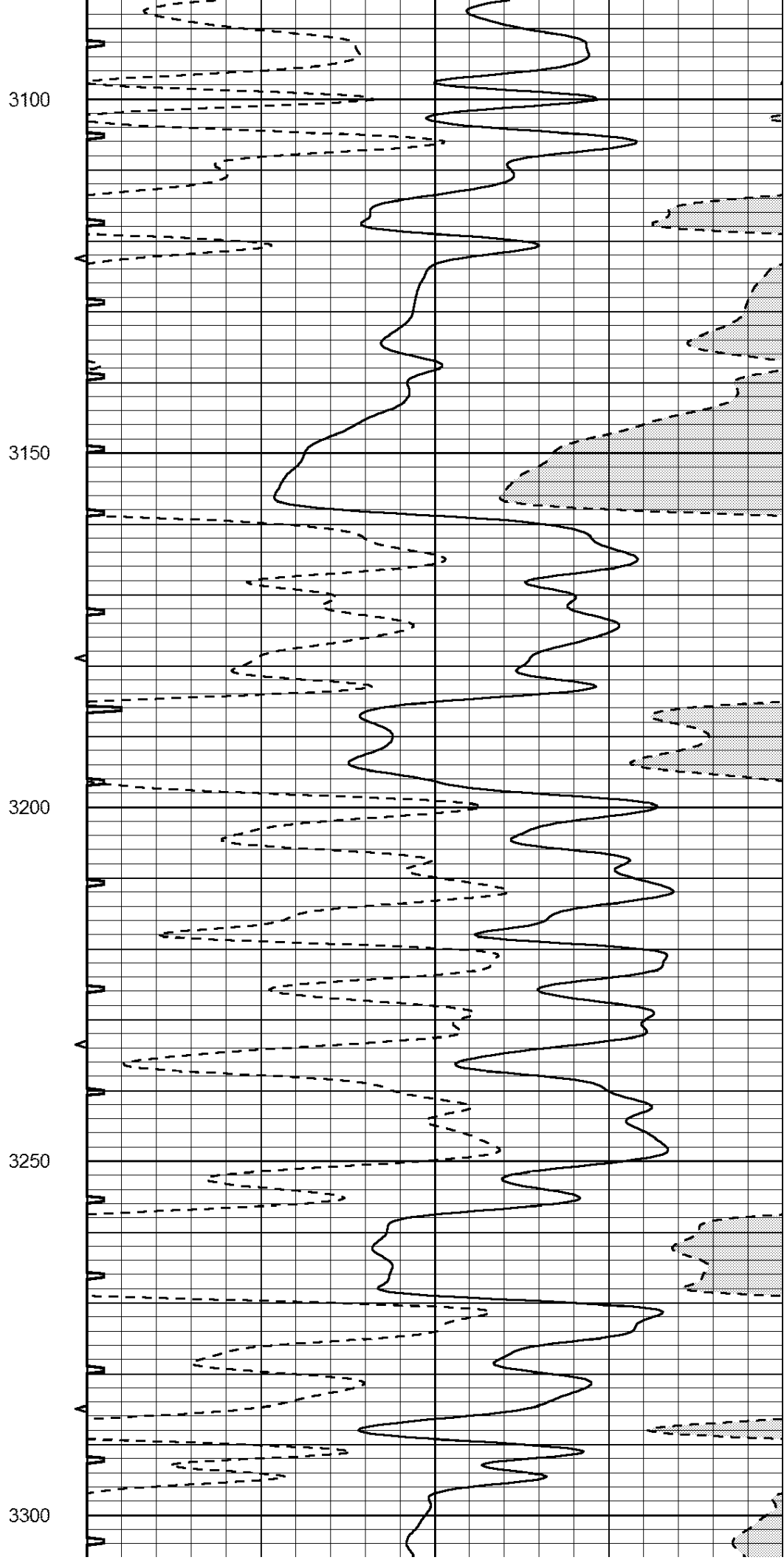
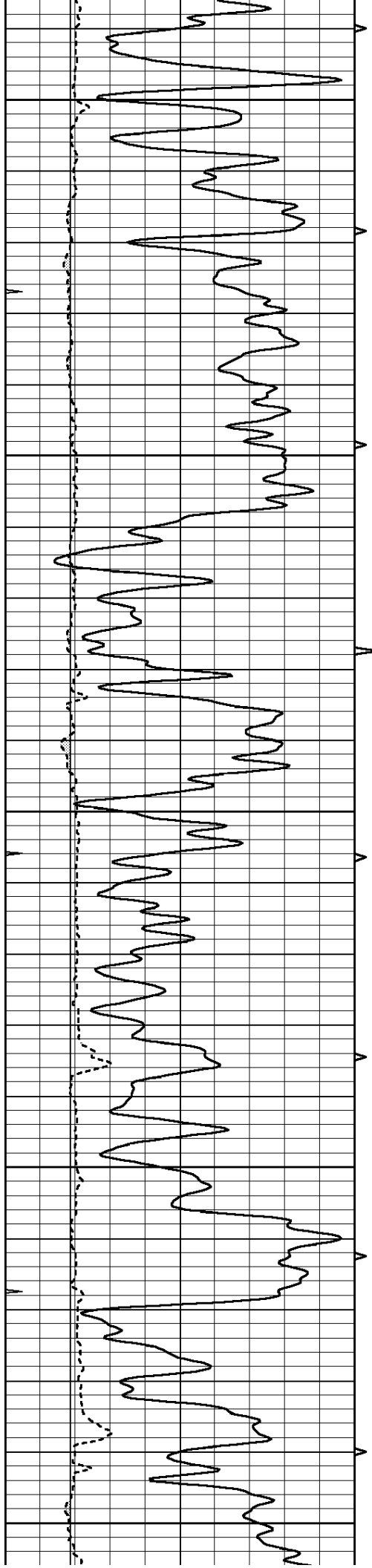
2400

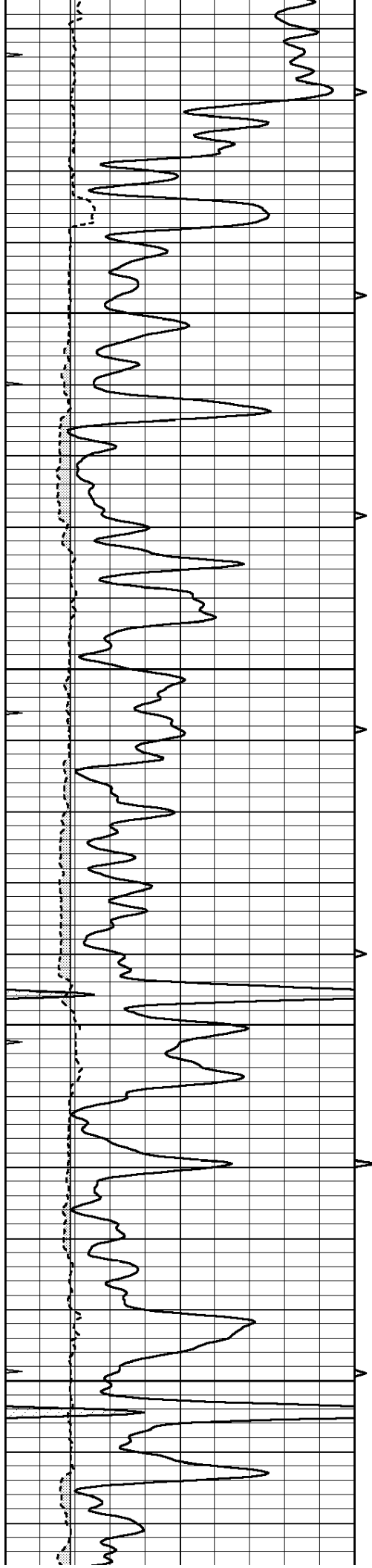










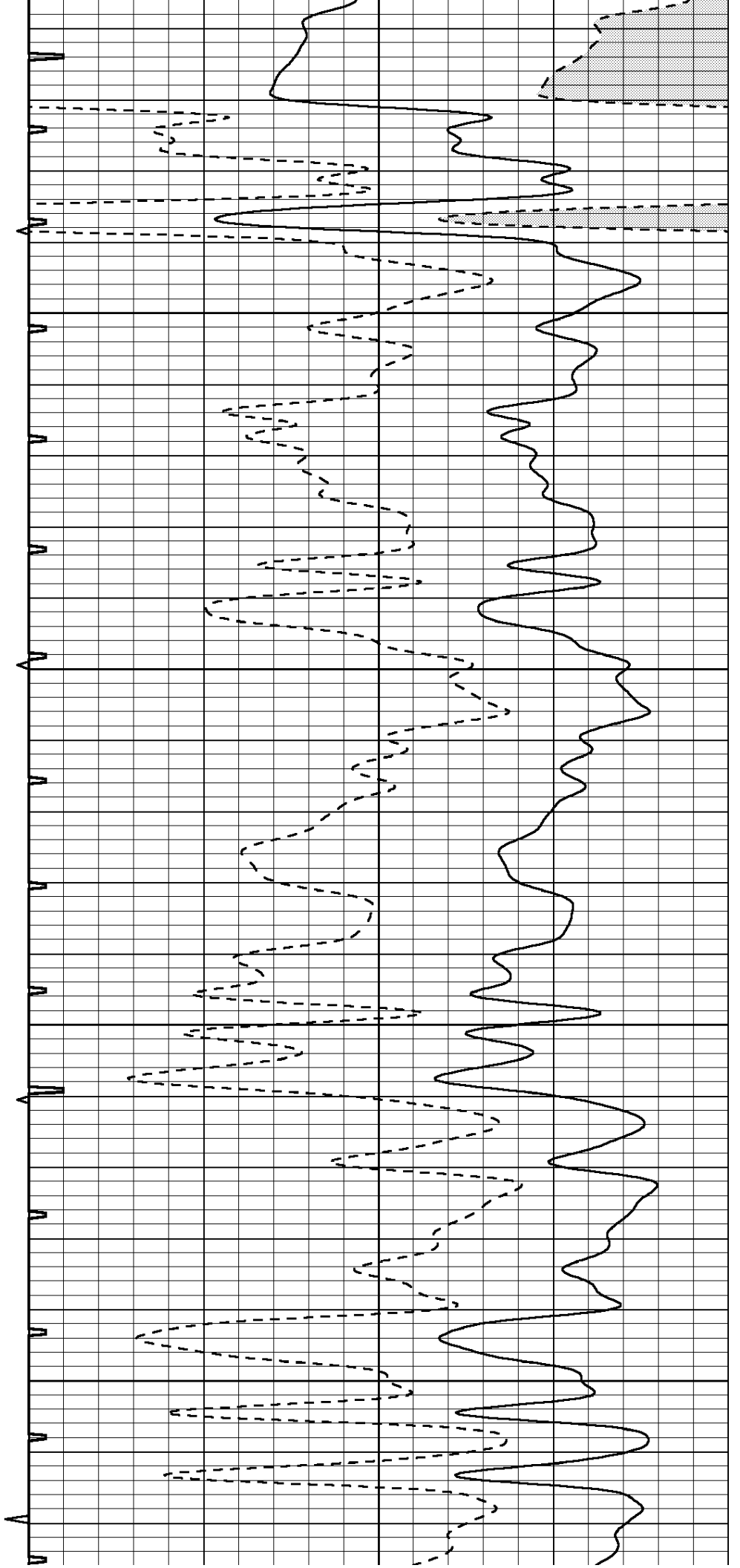


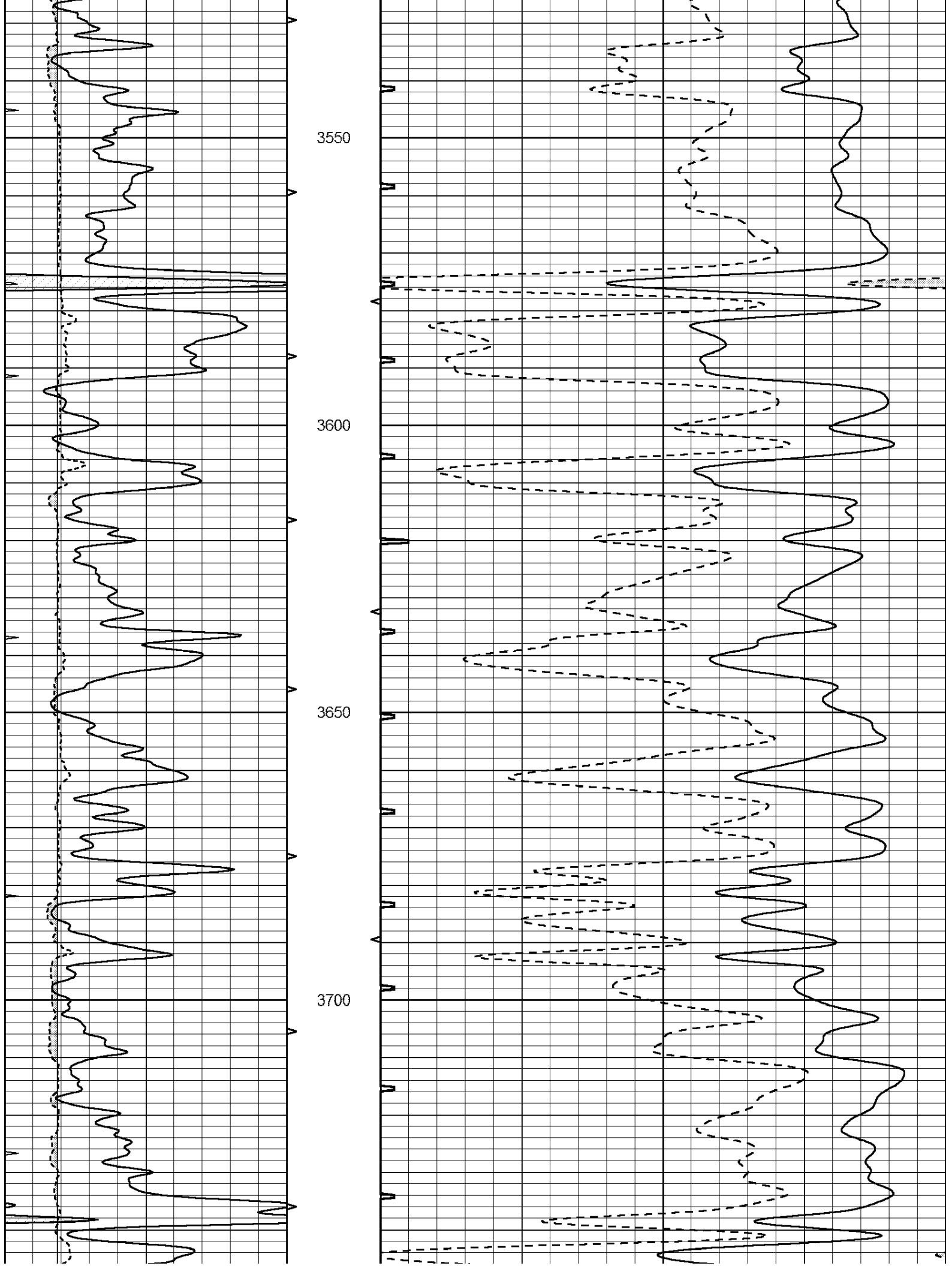
3350

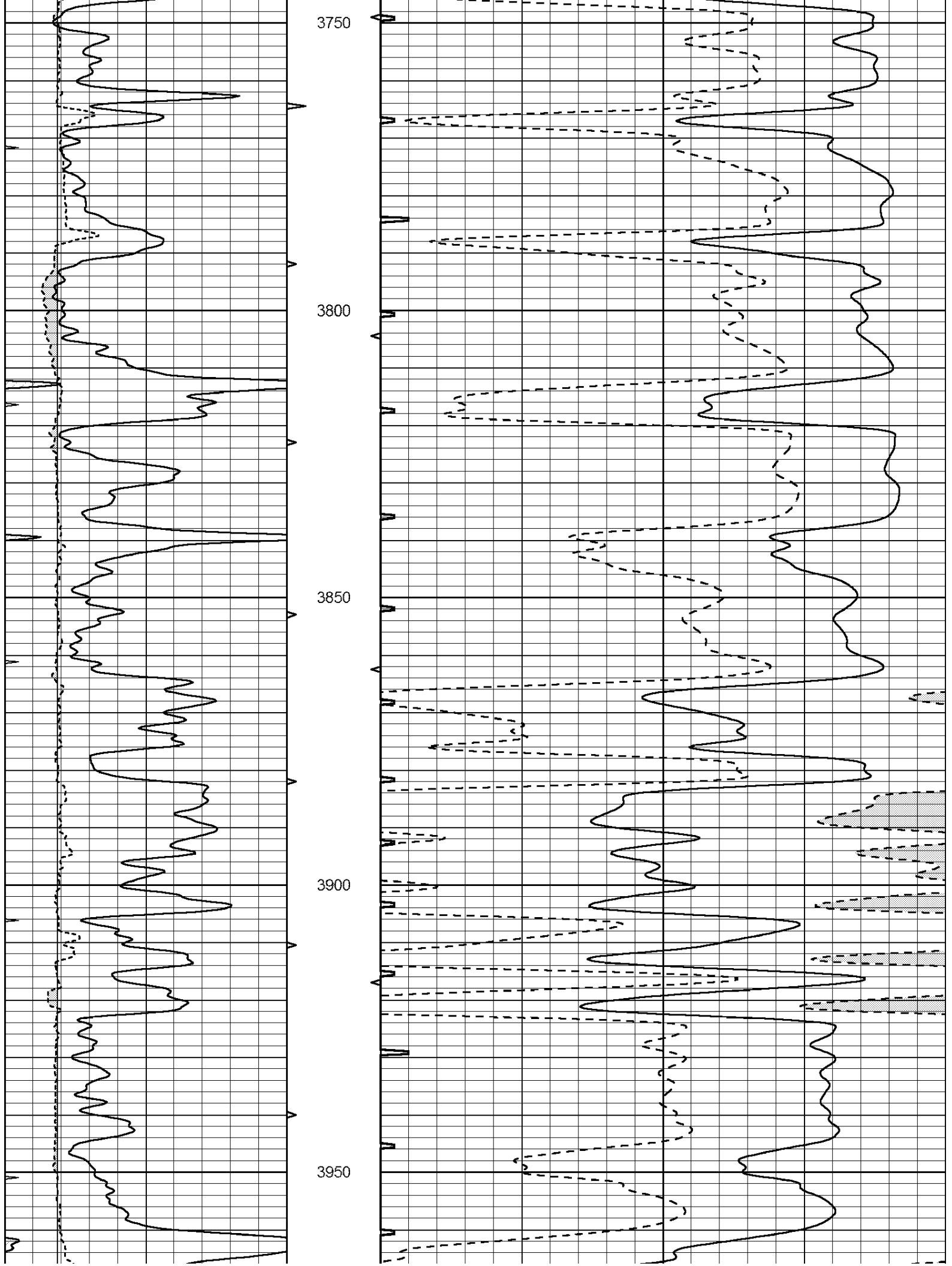
3400

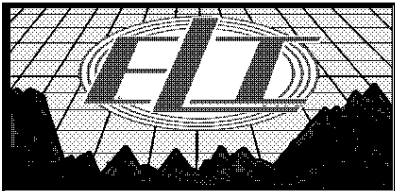
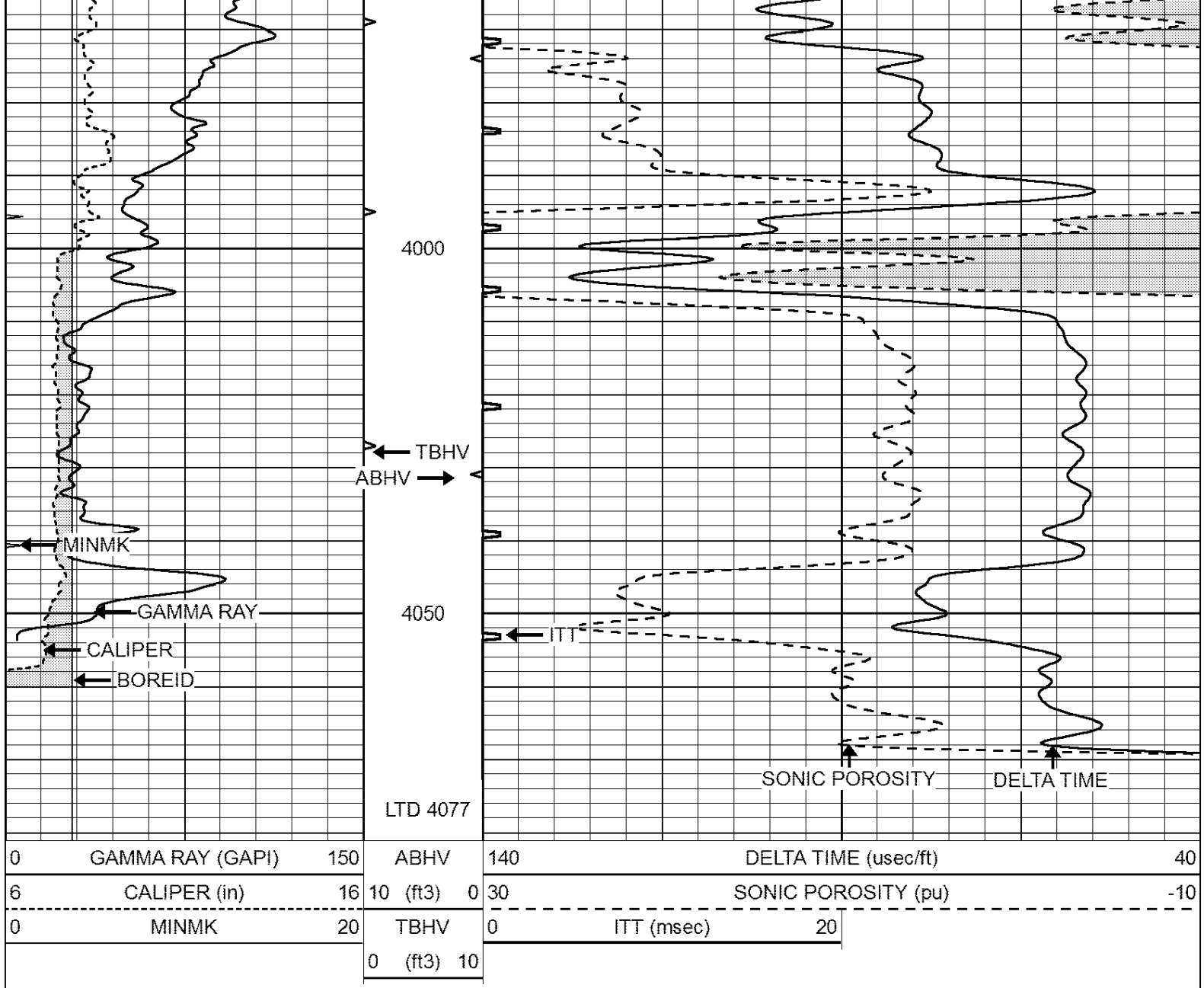
3450

3500





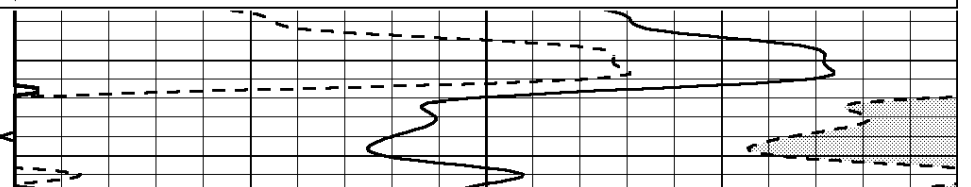
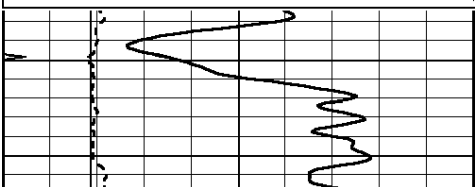


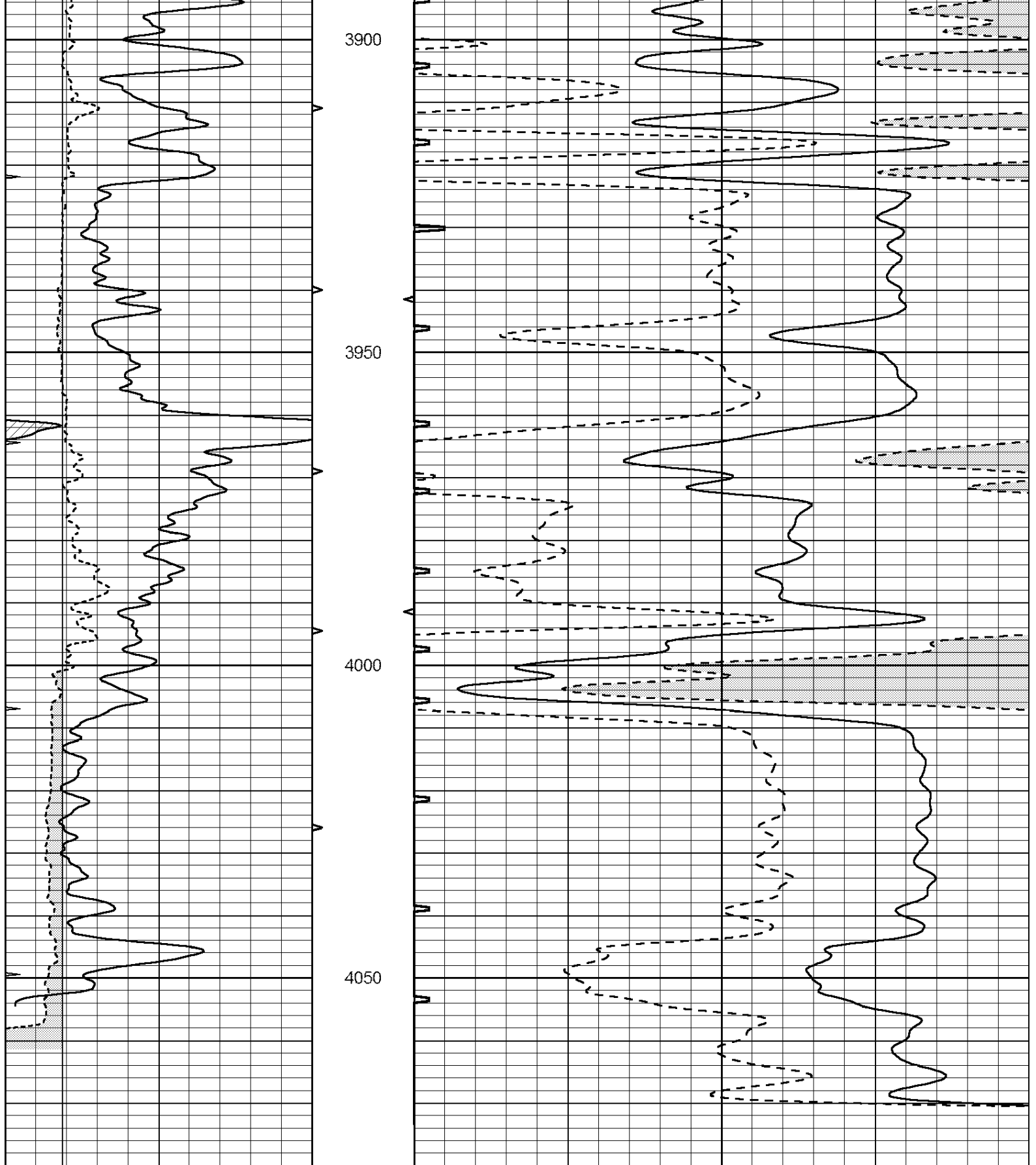


# REPEAT SECTION

Database File: 2680ddn.db  
 Dataset Pathname: pass4  
 Presentation Format: \_slt  
 Dataset Creation: Fri May 25 02:59:56 2018 by Log Open-Cased 090629  
 Charted by: Depth in Feet scaled 1:240

0	GAMMA RAY (GAPI)	150	ABHV	140	DELTA TIME (usec/ft)	40
6	CALIPER (in)	16	10 (ft3) 0	30	SONIC POROSITY (pu)	-10
0	MINMK	20	TBHV	0	ITT (msec)	20
			0 (ft3) 10			





0	GAMMA RAY (GAPI)	150	ABHV	140	DELTA TIME (usec/ft)	40	
6	CALIPER (in)	16	10 (ft3)	0	30	SONIC POROSITY (pu)	-10
0	MINMK	20	TBHV	0	ITT (msec)	20	
			0 (ft3)	10			

Calibration Report

MICRO Calibration Report

Serial Number: MICRO6  
Tool Model: PROBE  
Performed: Wed May 09 00:54:36 2018

Caliper Calibration: Gain=26.621      Offset=0.453  
  
                                    Low Cal              High Cal  
References                      7.000              14.000  
Readings                         0.217              0.478

1.5" Calibration: Gain=29.075      Offset=-0.400  
  
                                    Low Cal              High Cal  
References                      0.000              20.000  
Readings                         0.004              1.196

2" Calibration: Gain=45.000      Offset=-1.000  
  
                                    Low Cal              High Cal  
References                      0.000              20.000  
Readings                         0.006              0.913

Gamma Ray Calibration Report

Serial Number: #8  
Tool Model: OPEN  
Performed: Tue May 15 00:49:07 2018

Calibrator Value: 150.0              GAPI  
  
Background Reading: 0.0              cps  
Calibrator Reading: 175.0              cps  
  
Sensitivity: 0.9000              GAPI/cps