



**COMPENSATED
DENSITY/NEUTRON
LOG**

Company ELK ENERGY HOLDINGS, LLC.
Well SHEPHERD #1-14
Field NOLLETTE SOUTHEAST
County THOMAS
State KANSAS

Company ELK ENERGY HOLDINGS, LLC.
Well SHEPHERD #1-14
Field NOLLETTE SOUTHEAST
County THOMAS State KANSAS

Location: API # : 15-193-21010-00-00
2060' FSL & 650' FEL
SEC 14 TWP 10S RGE 33W
Permanent Datum GROUND LEVEL Elevation 3133'
Log Measured From KELLY BUSHING 5' A.G.L.
Drilling Measured From KELLY BUSHING
Elevation
K.B. 2138
D.F. 3136
G.L. 3133

Date	04/04/18
Run Number	ONE
Depth Driller	4720
Depth Logger	4723
Bottom Logged Interval	4700
Top Log Interval	3800
Casing Driller	8 5/8" @ 344
Casing Logger	344
Bit Size	7 7/8"
Type Fluid in Hole	CHEMICAL MUD
Density / Viscosity	9.3/55
pH / Fluid Loss	10.0/8.0
Source of Sample	FLOWLINE
Rm @ Meas. Temp	1.4@40
Rmt @ Meas. Temp	1.05@40
Rmc @ Meas. Temp	1.68@40
Source of Rmf / Rmc	MEASURED
Rm @ BHT	.46@122
Time Circulation Stopped	2 HOURS
Time Logger on Bottom	///
Maximum Recorded Temperature	122F
Equipment Number	4010
Location	HAYS, KANSAS
Recorded By	GUS PFANENSTIEL
Witnessed By	SEAN DEENIHAN

<<< Fold Here >>>

All interpretations are opinions based on inferences from electrical or other measurements and we cannot and do not guarantee the accuracy or correctness of any interpretation, and we shall not, except in the case of gross or willful negligence on our part, be liable or responsible for any loss, costs, damages, or expenses incurred or sustained by anyone resulting from any interpretation made by any of our officers, agents or employees. These interpretations are also subject to our general terms and conditions set out in our current Price Schedule.

Comments

THANK YOU FOR USING ELI WIRELINE, HAYS, KS. (785) 628-6395

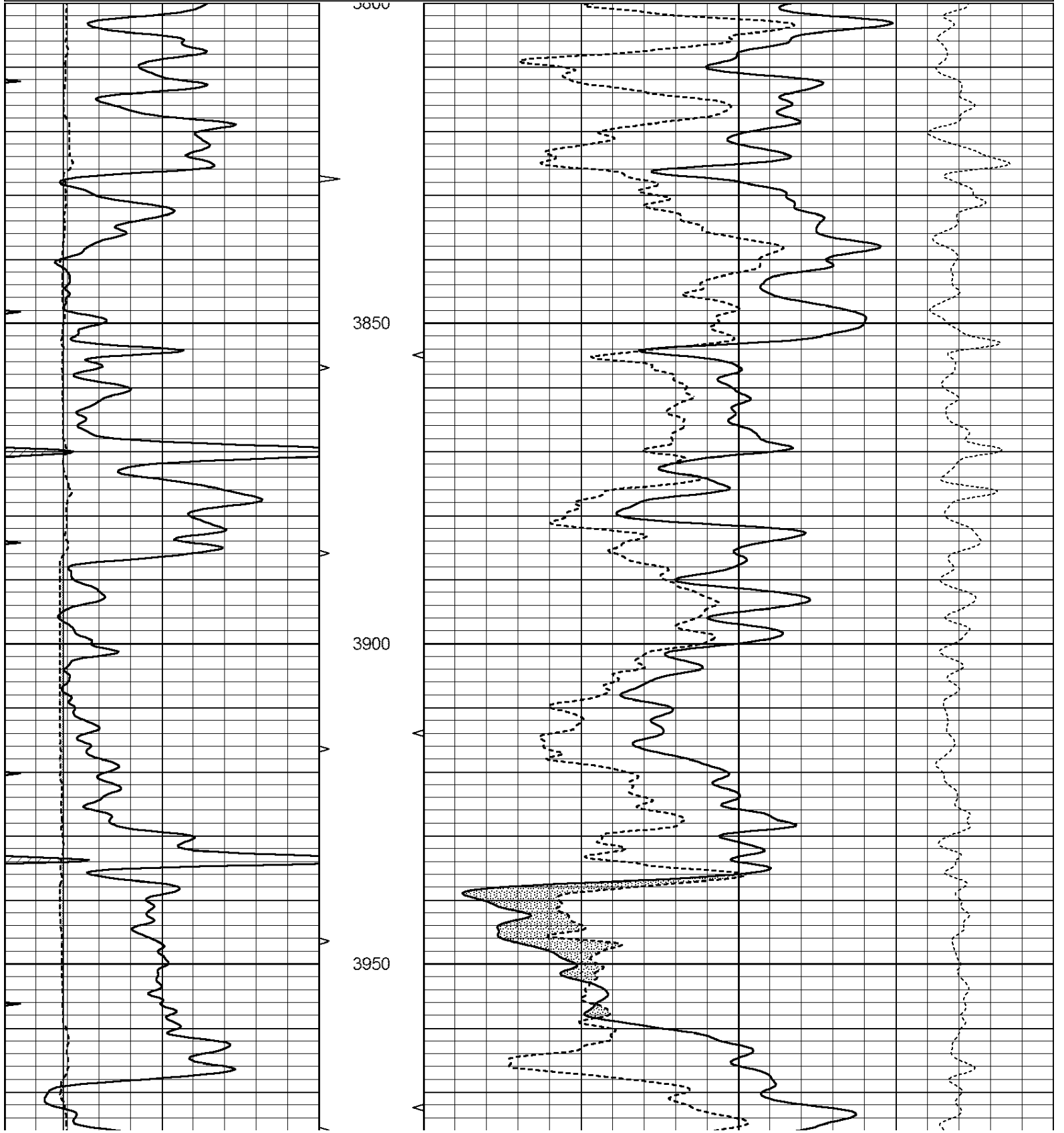
DIRECTIONS
OAKLEY FARTHEST WEST EXIT SOUTH TO C. RD.
5 WEST, 2 NORTH, WEST INTO.

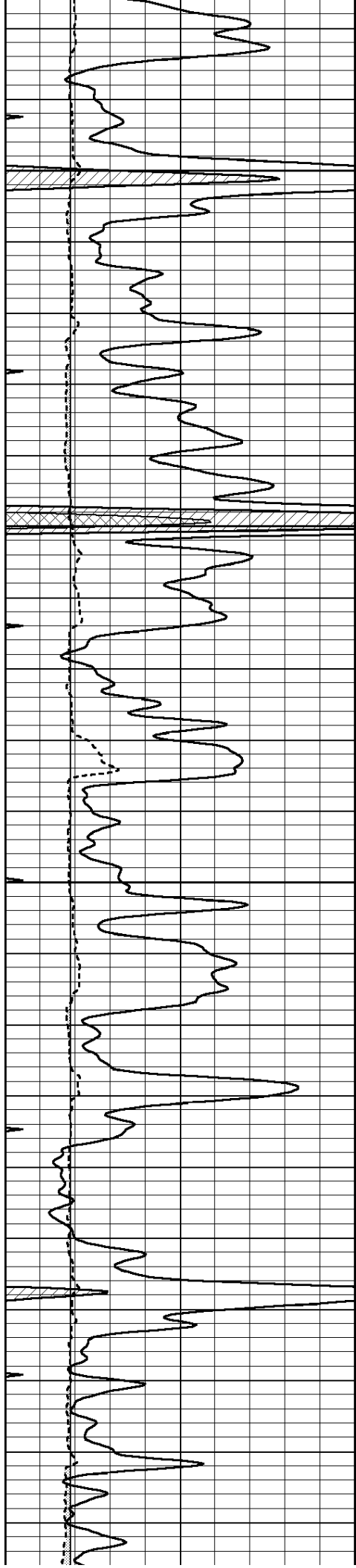


MAIN PASS

Database File: 2417ddn.db
 Dataset Pathname: pass3.1
 Presentation Format: den_neu
 Dataset Creation: Wed Apr 04 10:02:39 2018 by Calc Open-Cased 090629
 Charted by: Depth in Feet scaled 1:240

0	GAMMA RAY (GAPI)	150	ABHV	30	COMPENSATED DENSITY (pu)	-10
6	CALIPER (in)	16	10 (ft3)	0 30	COMPENSATED NEUTRON (pu)	-10
0	MINMK	20	TBHV		-0.25 CORRECTION (g/cc)	0.25
			0 (ft3)	10		



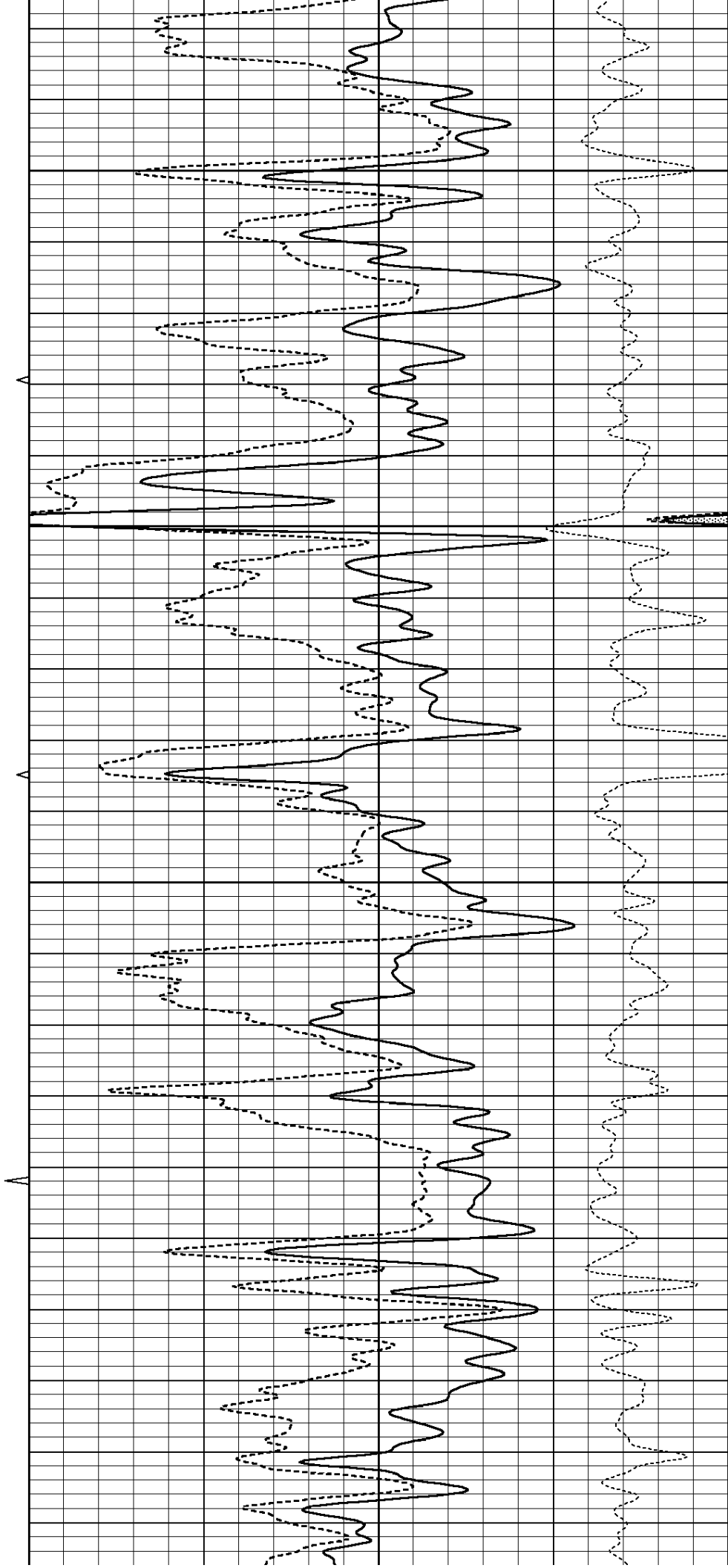


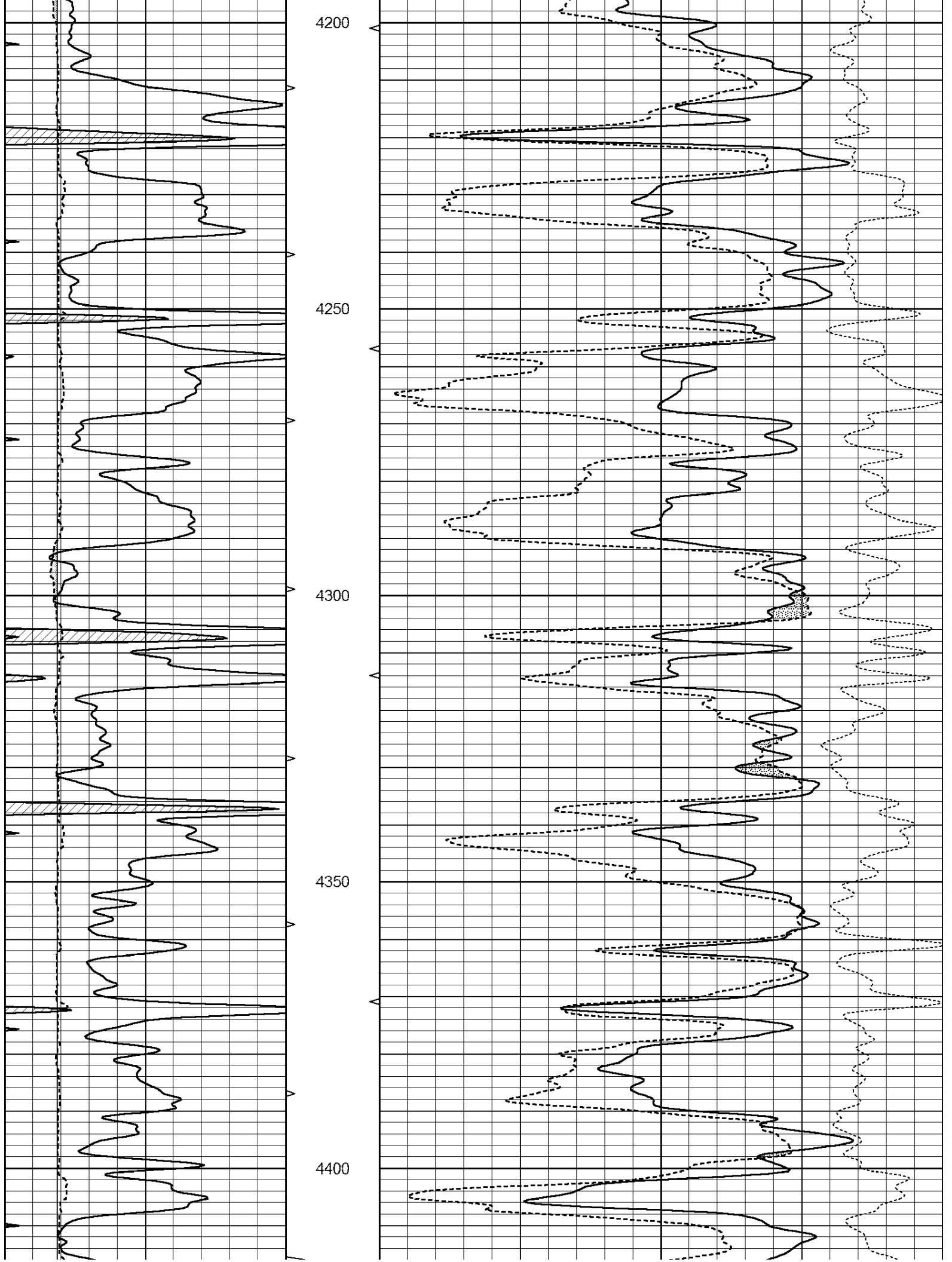
4000

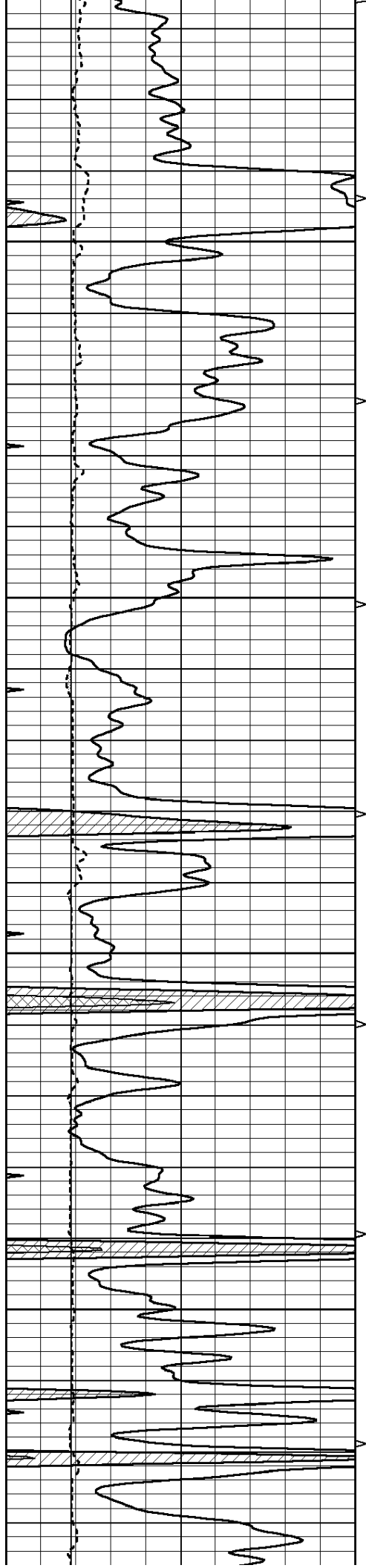
4050

4100

4150





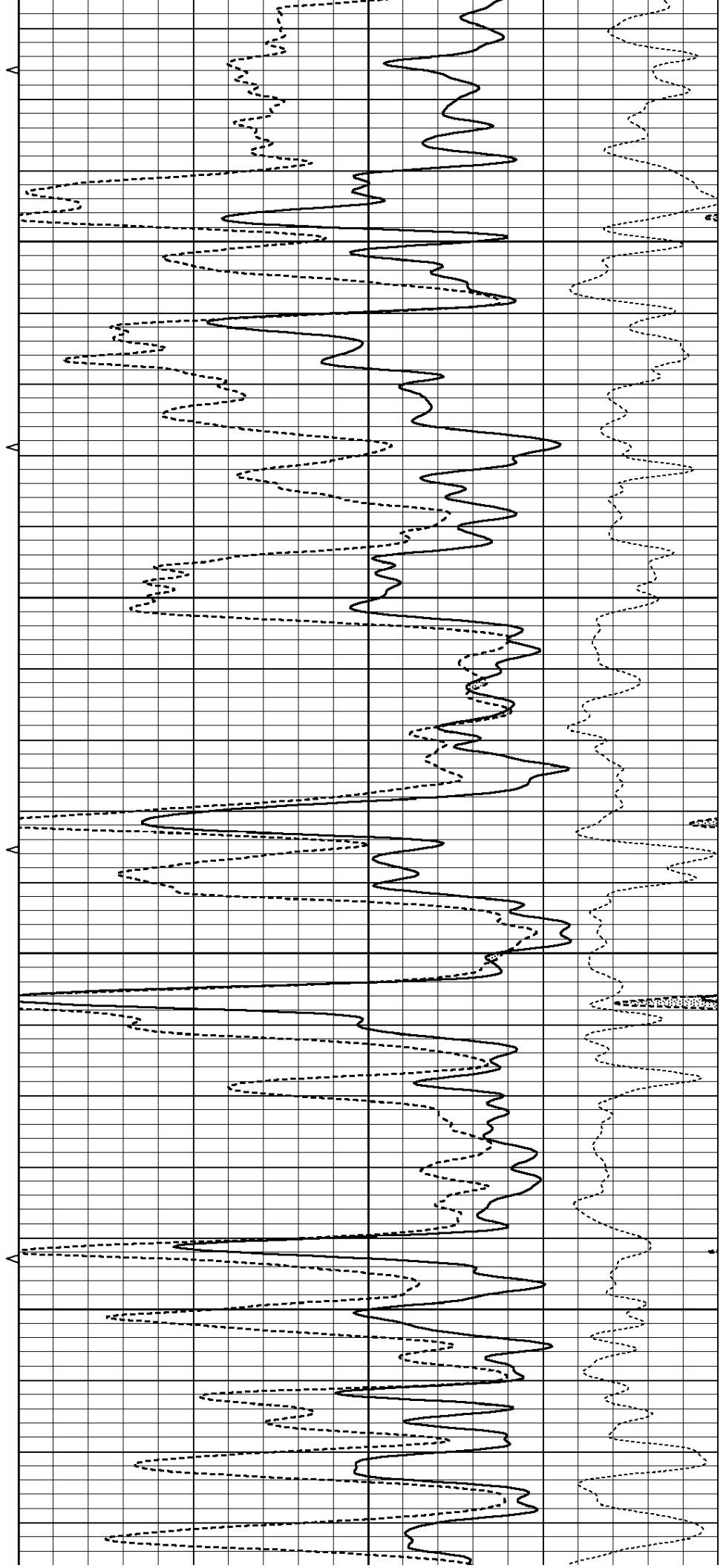


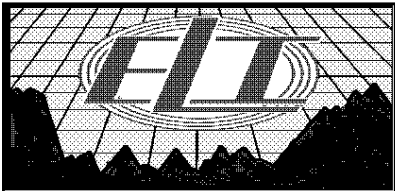
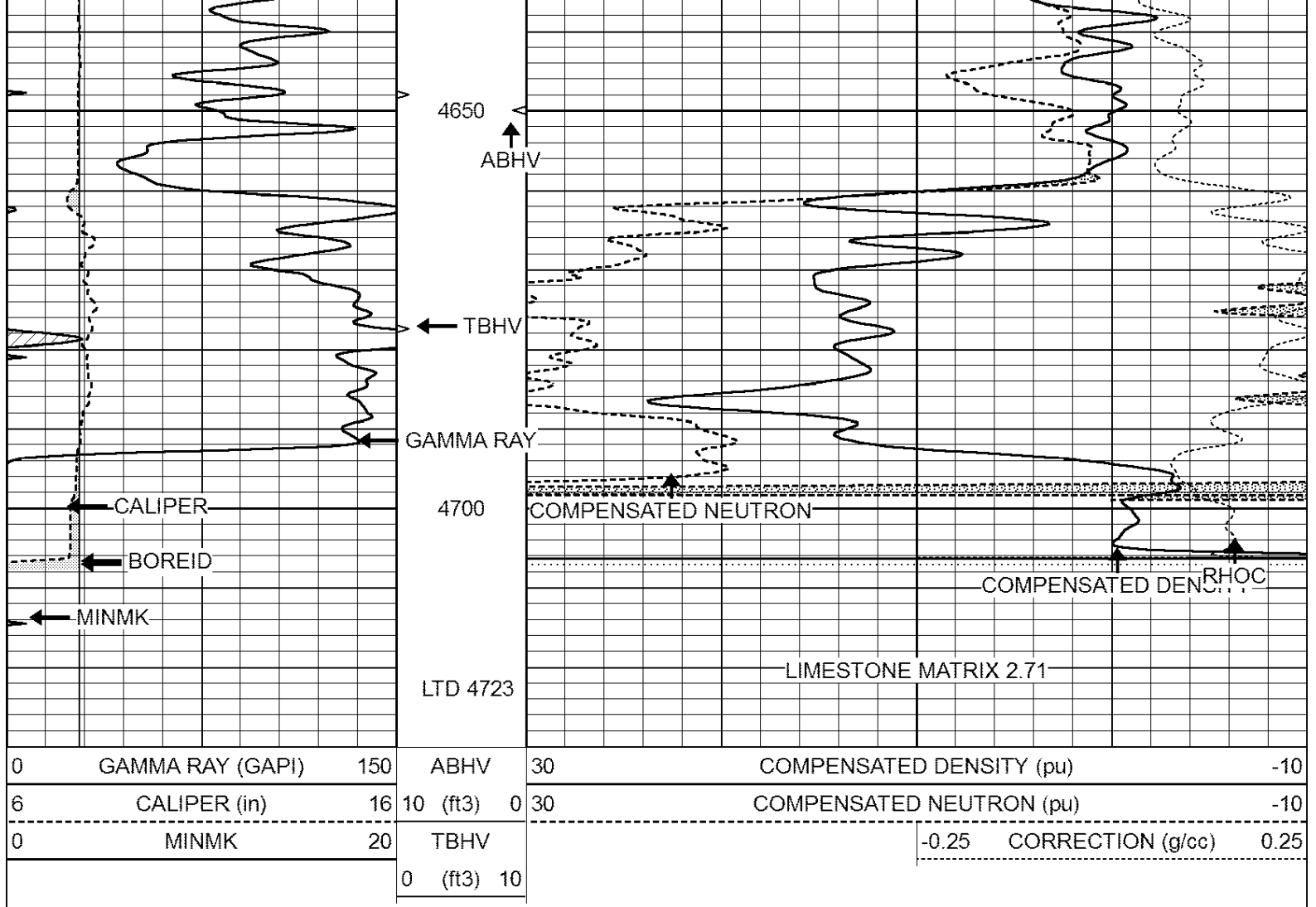
4450

4500

4550

4600

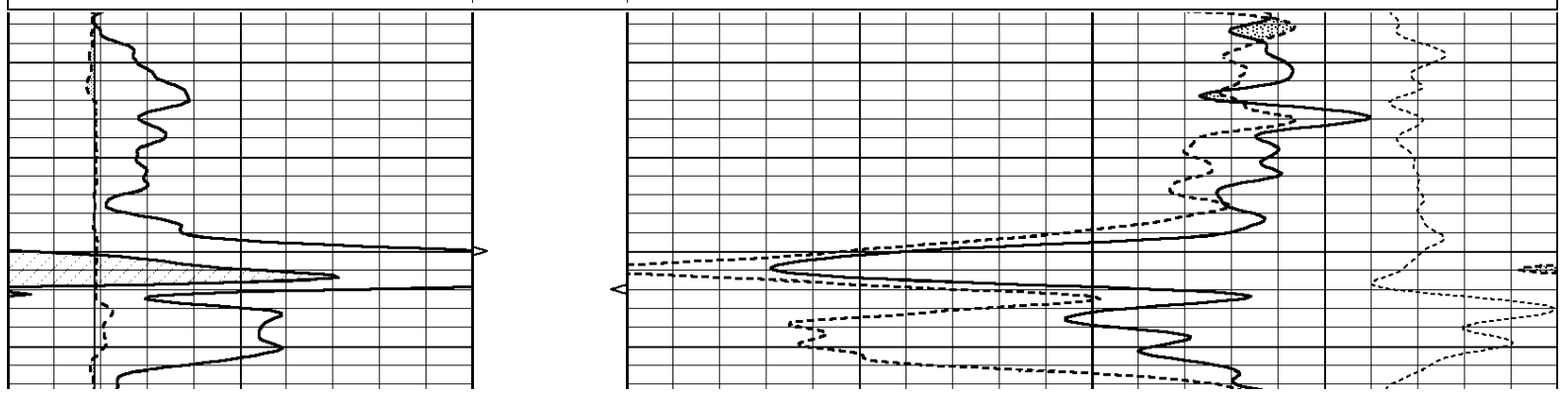


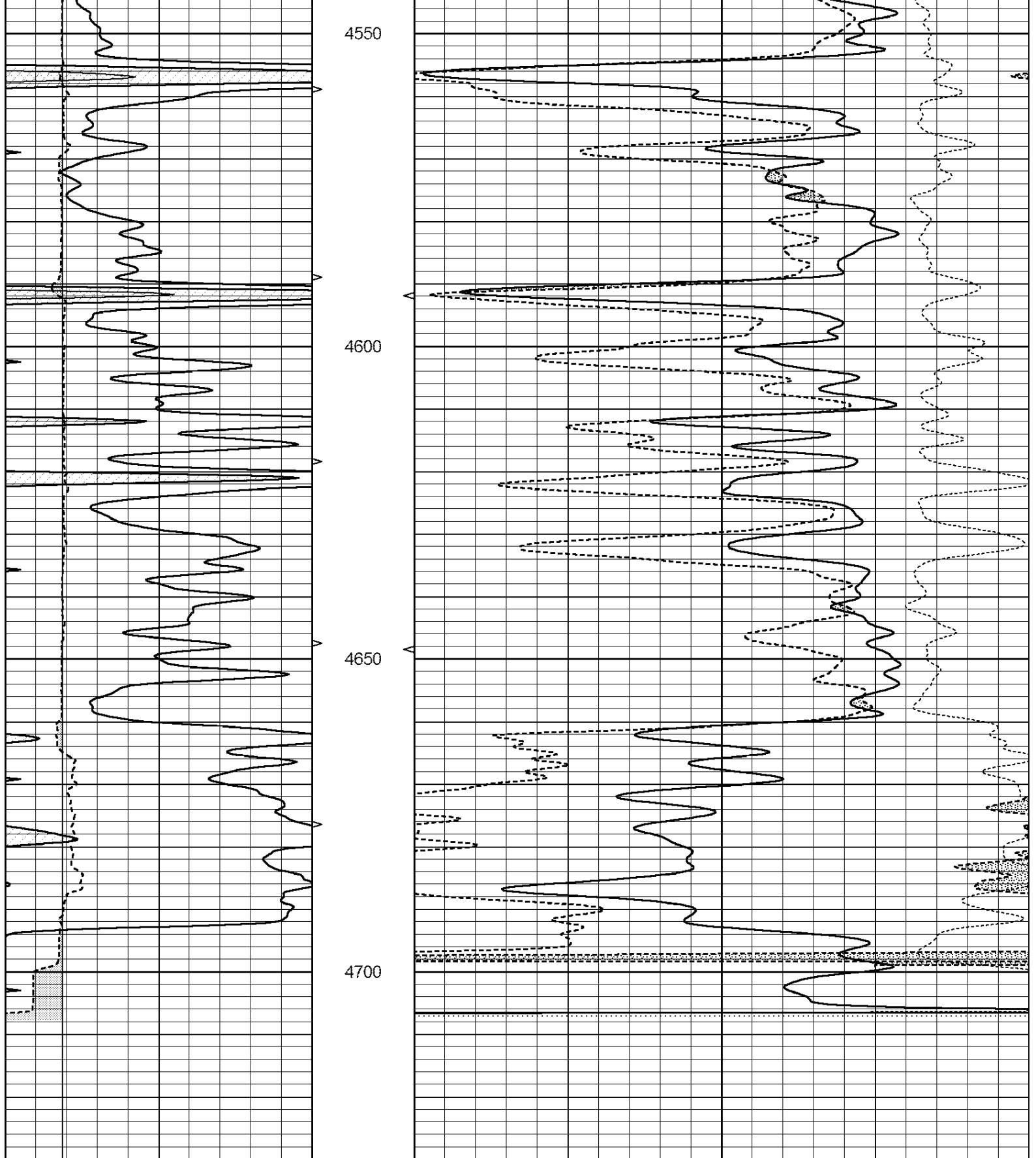


REPEAT SECTION

Database File: 2417ddn.db
 Dataset Pathname: pass2.1
 Presentation Format: den_neu
 Dataset Creation: Wed Apr 04 09:01:02 2018 by Calc Open-Cased 090629
 Charted by: Depth in Feet scaled 1:240

0	GAMMA RAY (GAPI)	150	ABHV	30	COMPENSATED DENSITY (pu)	-10
6	CALIPER (in)	16	10 (ft3)	0 30	COMPENSATED NEUTRON (pu)	-10
0	MINMK	20	TBHV		-0.25 CORRECTION (g/cc)	0.25
			0 (ft3)	10		





0	GAMMA RAY (GAPI)	150	ABHV	30	COMPENSATED DENSITY (pu)	-10
6	CALIPER (in)	16	10 (ft3)	0 30	COMPENSATED NEUTRON (pu)	-10
0	MINMK	20	TBHV		-0.25 CORRECTION (g/cc)	0.25
			0 (ft3)	10		

Calibration Report

Dual Induction Calibration Report

Serial-Model: PROBE8-DILG
 Surface Cal Performed: Mon Aug 21 11:58:18 2017
 Downhole Cal Performed: Mon Aug 21 11:58:21 2017
 After Survey Verification Performed: Mon Aug 21 11:58:23 2017

Surface Calibration

Loop:	Readings			References			Results	
	Air	Loop		Air	Loop		m	b
Deep	0.015	0.648	V	0.000	400.000	mmho/m	620.000	0.000
Medium	0.029	0.796	V	0.000	464.000	mmho/m	590.000	-12.000
Internal:	Zero	Cal		Zero	Cal		m	b
Deep	0.017	0.657	V	0.000	400.000	mmho/m	625.153	-10.619
Medium	0.016	0.757	V	0.000	464.000	mmho/m	625.992	-9.739

Downhole Calibration

	Readings			References			Results	
	Zero	Cal		Zero	Cal		m'	b'
Deep	0.000	0.000	mmho/m	2.011	405.777	mmho/m	1.000	0.000
Medium	0.000	0.000	mmho/m	7.590	503.393	mmho/m	1.000	0.000
LL3		7.500	V		1500.000	Ohm-m		
		0.000	V		20.000	Ohm-m		
		-7.200	V		3800.000	mmho-m		

After Survey Verification

	Readings			Targets			Results	
	Zero	Cal		Zero	Cal		m'	b'
Deep	0.000	0.000	mmho/m	0.000	0.000	mmho/m	0.000	0.000
Medium	0.000	0.000	mmho/m	0.000	0.000	mmho/m	0.000	0.000
LL3		1.000	Ohm-m		1.000	Ohm-m		
		0.000	Ohm-m		0.000	Ohm-m		
		1.000	mmho-m		1.000	mmho-m		

Litho Density Calibration Report
 Serial: 002 Model: PRB

Master Calibration

Performed Mon Aug 21 11:56:41 2017

	Background	Magnesium	Aluminum	Sandstone	
Window 1	833.6	7394.2	2287.3	8111.8	cps
Window 2	768.9	6322.3	1995.6	6800.0	cps
Window 3	621.5	3261.9	1186.4	3380.9	cps
Window 4	184.2	185.7	184.9	184.8	cps
Long Space	0.0	5553.4	1226.6	6031.1	cps
Short Space	1.2	1307.5	903.9	1387.7	cps
Rho		1.7100	2.5900	1.3800	g/cc
Pe		0.0000	2.5700	1.5500	

Rib Angle : 46.3 Rib Slope : 1.045 Density/Spine Ratio : 0.566
 Spine Angle : 76.3 Spine Slope : 4.090 Spine Intercept : -20.7

Before Survey Verification

Performed Wed Dec 31 18:00:00 1969

Window 1	0.0	0.0	0.0	0.0	cps
----------	-----	-----	-----	-----	-----

Window 2	0.0	0.0	0.0	0.0	cps
Window 3	0.0	0.0	0.0	0.0	cps
Window 4	0.0	0.0	0.0	0.0	cps
Long Space	0.0	0.0	0.0	0.0	cps
Short Space	0.0	0.0	0.0	0.0	cps
Measured Rho		0.0000	0.0000	0.0000	g/cc
Measured Correction		0.0000	0.0000	0.0000	g/cc
Measured Pe			0.0000	0.0000	

After Survey Verification

Performed Wed Dec 31 18:00:00 1969

Window 1	0.0	0.0	0.0	0.0	cps
Window 2	0.0	0.0	0.0	0.0	cps
Window 3	0.0	0.0	0.0	0.0	cps
Window 4	0.0	0.0	0.0	0.0	cps
Long Space	0.0	0.0	0.0	0.0	cps
Short Space	0.0	0.0	0.0	0.0	cps
Measured Rho		0.0000	0.0000	0.0000	g/cc
Measured Correction		0.0000	0.0000	0.0000	g/cc
Measured Pe			0.0000	0.0000	

Compensated Neutron Calibration Report

Serial Number: 61
Tool Model: G

CALIBRATION

Detector	Readings	Target	Normalization
Short Space	1.00 cps	1.00 cps	1.0000
Long Space	1.00 cps	1.00 cps	1.0000

PRE-SURVEY VERIFICATION

Detector	Readings	Measured	Target
1) Short Space	cps		
Long Space	cps	pu	pu
2) Short Space	cps		
Long Space	cps	pu	
3) Short Space	cps		
Long Space	cps	pu	

POST-SURVEY VERIFICATION

Detector	Readings	Measured	Target
1) Short Space	cps		
Long Space	cps	pu	pu
2) Short Space	cps		
Long Space	cps	pu	pu
3) Short Space	cps		
Long Space	cps	pu	pu

Gamma Ray Calibration Report

Serial Number: GR6
Tool Model: OPEN
Performed: Mon Aug 21 11:59:01 2017

Calibrator Value:	150.0	GAPI
Background Reading:	0.0	cps
Calibrator Reading:	276.0	cps
Sensitivity:	0.5500	GAPI/cps