



MICRO LOG

Company ELK ENERGY HOLDINGS, LLC.  
 Well SHEPHERD #1-14  
 Field NOLLETTE SOUTHEAST  
 County THOMAS  
 State KANSAS

Company ELK ENERGY HOLDINGS, LLC.  
 Well SHEPHERD #1-14  
 Field NOLLETTE SOUTHEAST  
 County THOMAS State KANSAS

Location: API # : 15-193-21010-00-00  
 2060' FSL & 650' FEL  
 SEC 14 TWP 10S RGE 33W  
 Permanent Datum GROUND LEVEL Elevation 3133'  
 Log Measured From KELLY BUSHING 5' A.G.L.  
 Drilling Measured From KELLY BUSHING  
 Other Services CDL/CNL/DIL  
 Elevation K.B. 2138  
 D.F. 3136  
 G.L. 3133

Date	04/04/18
Run Number	TWO
Depth Driller	4720
Depth Logger	4723
Bottom Logged Interval	4721
Top Log Interval	3800
Casing Driller	8 5/8" @ 344
Casing Logger	344
Bit Size	7 7/8"
Type Fluid in Hole	CHEMICAL MUD
Density / Viscosity	9.3/55
pH / Fluid Loss	10.0/8.0
Source of Sample	FLOWLINE
Rm @ Meas. Temp	1.4@40
Rmt @ Meas. Temp	1.05@40
Rmc @ Meas. Temp	1.68@40
Source of Rmf / Rmc	MEASURED
Rm @ BHT	.46@122
Time Circulation Stopped	2 HOURS
Time Logger on Bottom	///
Maximum Recorded Temperature	122F
Equipment Number	4010
Location	HAYS, KANSAS
Recorded By	GUS PFANENSTIEL
Witnessed By	SEAN DEENIHAN

<<< Fold Here >>>

All interpretations are opinions based on inferences from electrical or other measurements and we cannot and do not guarantee the accuracy or correctness of any interpretation, and we shall not, except in the case of gross or willful negligence on our part, be liable or responsible for any loss, costs, damages, or expenses incurred or sustained by anyone resulting from any interpretation made by any of our officers, agents or employees. These interpretations are also subject to our general terms and conditions set out in our current Price Schedule.

Comments

THANK YOU FOR USING ELI WIRELINE, HAYS, KS. (785) 628-6395

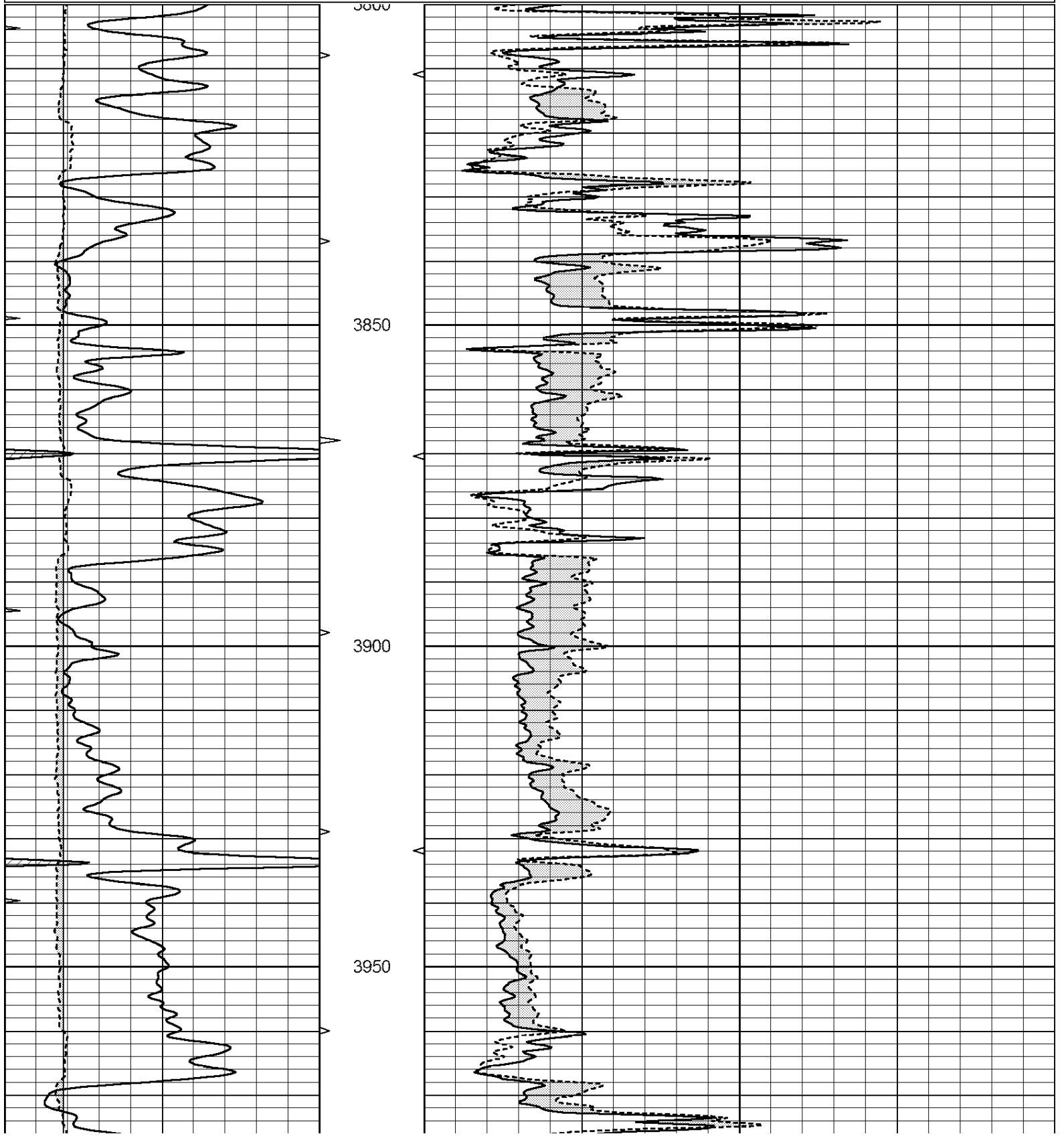
DIRECTIONS  
 OAKLEY FARTHEST WEST EXIT SOUTH TO C. RD.  
 5 WEST, 2 NORTH, WEST INTO.

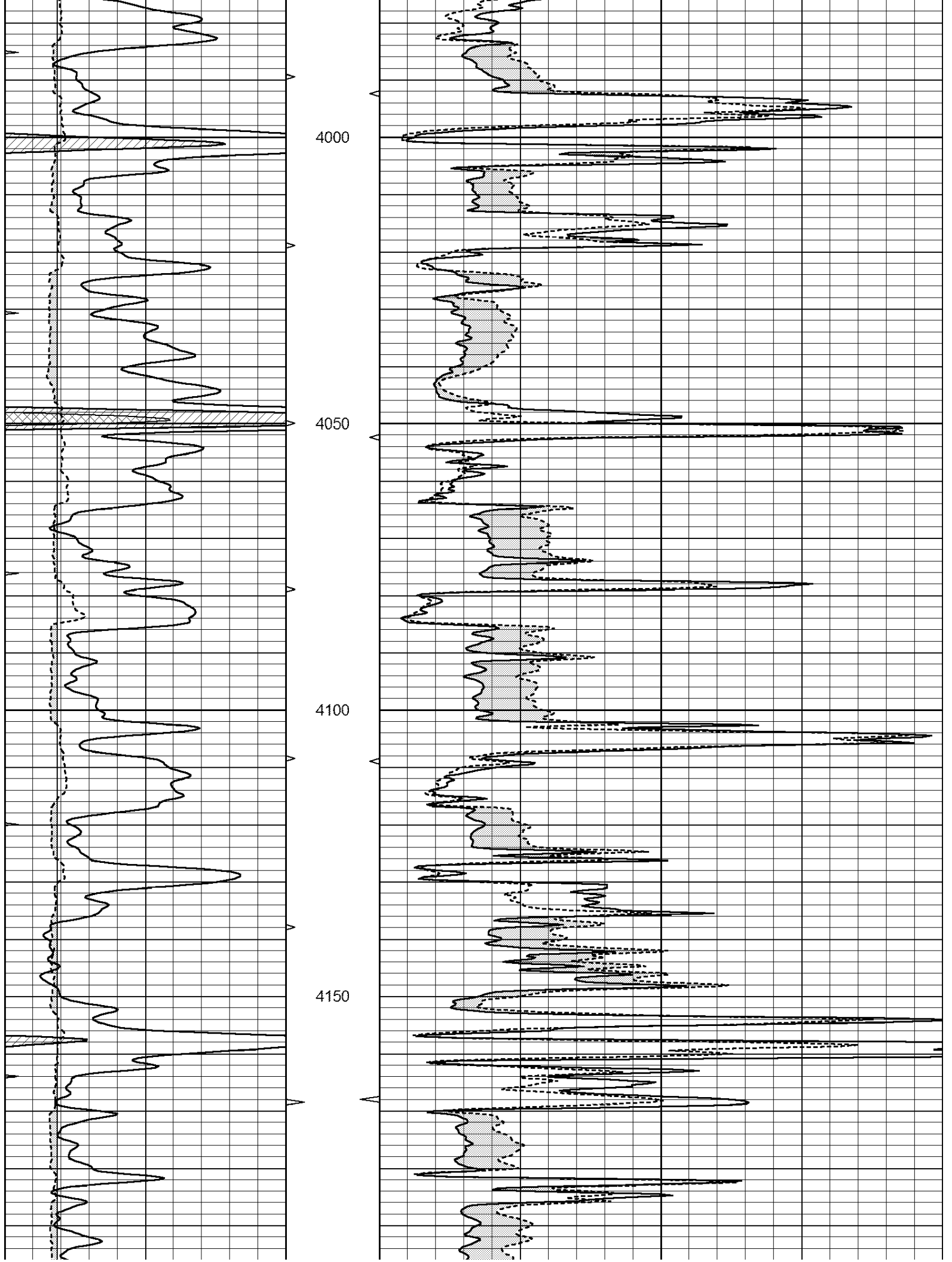


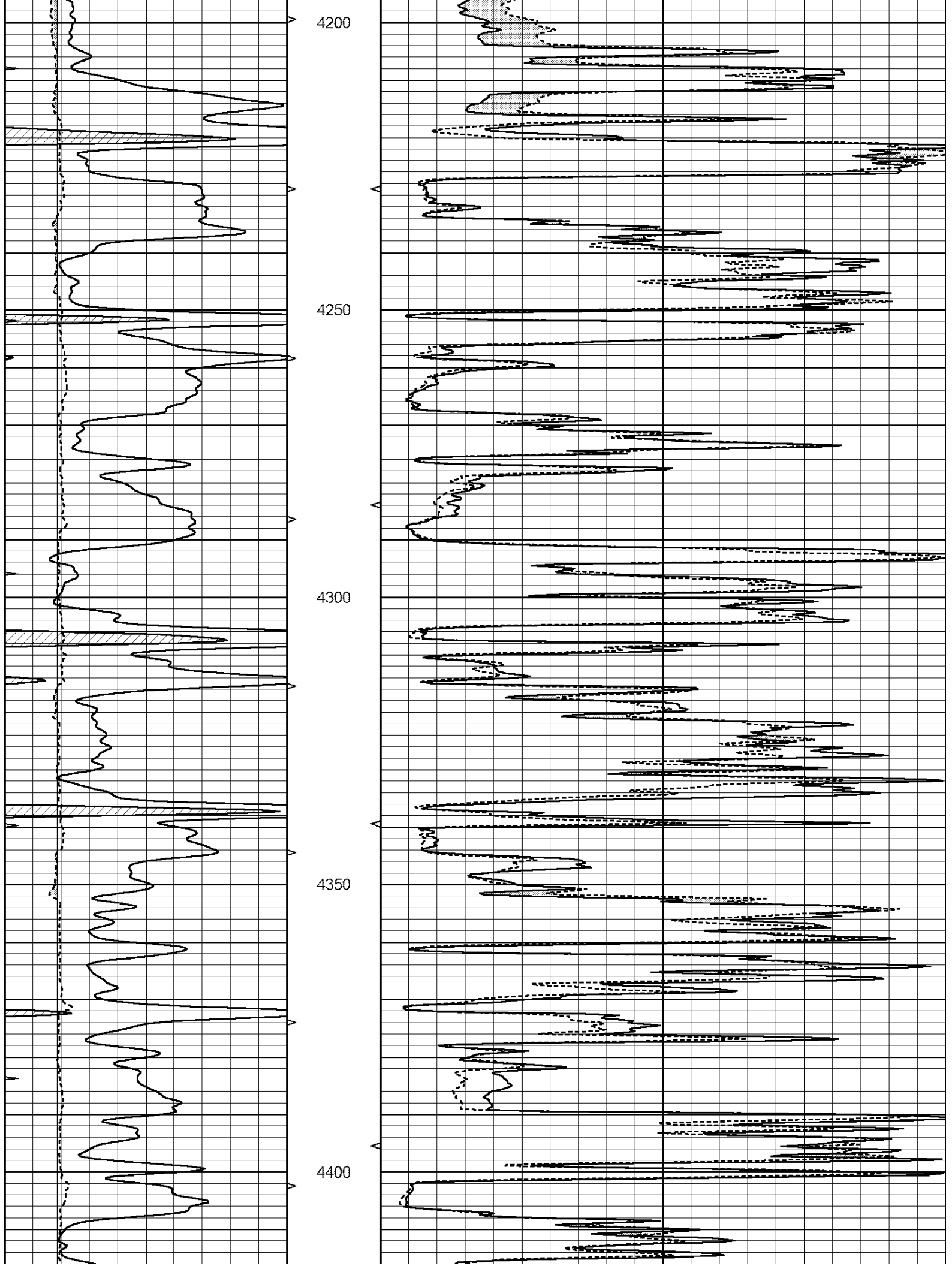
MAIN PASS

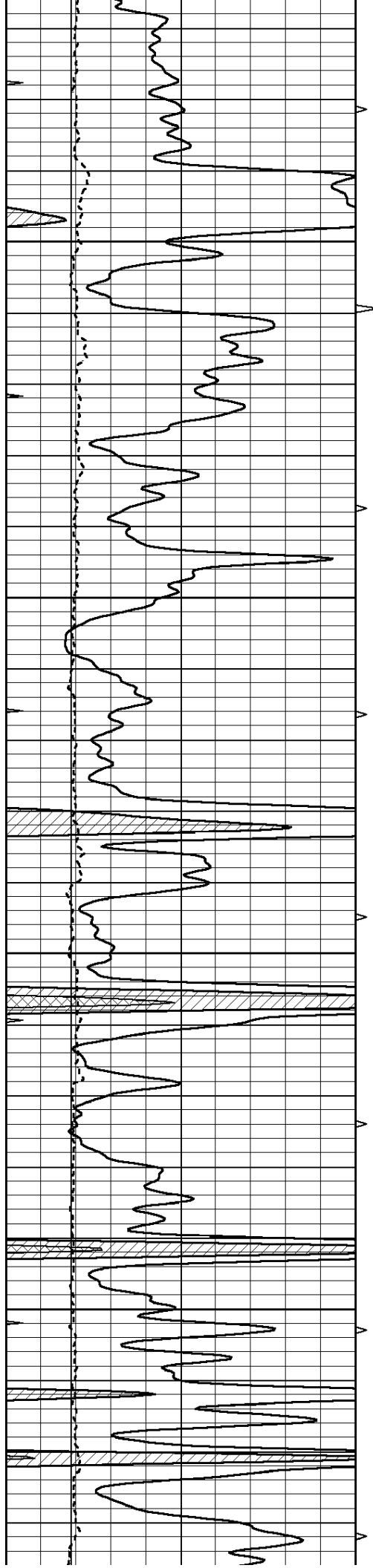
Database File: 2417ddn.db  
 Dataset Pathname: pass5.1  
 Presentation Format: \_micro  
 Dataset Creation: Wed Apr 04 10:48:10 2018  
 Charted by: Depth in Feet scaled 1:240

0	GAMMA RAY (GAPI)	150	ABHV	0	MEL1.5 (Ohm-m)	40
6	CALIPER (in)	16	10 (ft3)	0	MEL2.0 (Ohm-m)	40
0	MINMK	20	TBHV			
			0 (ft3)	10		







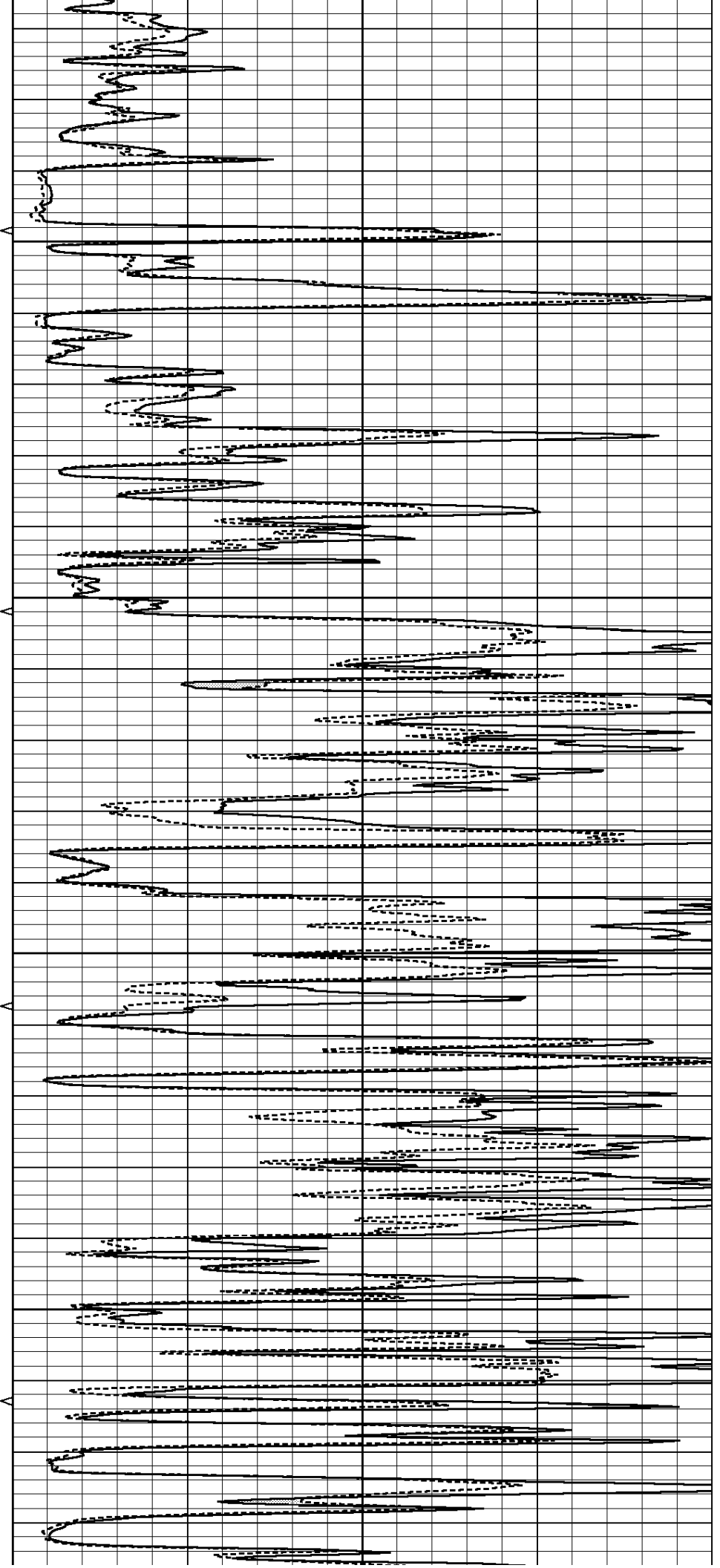


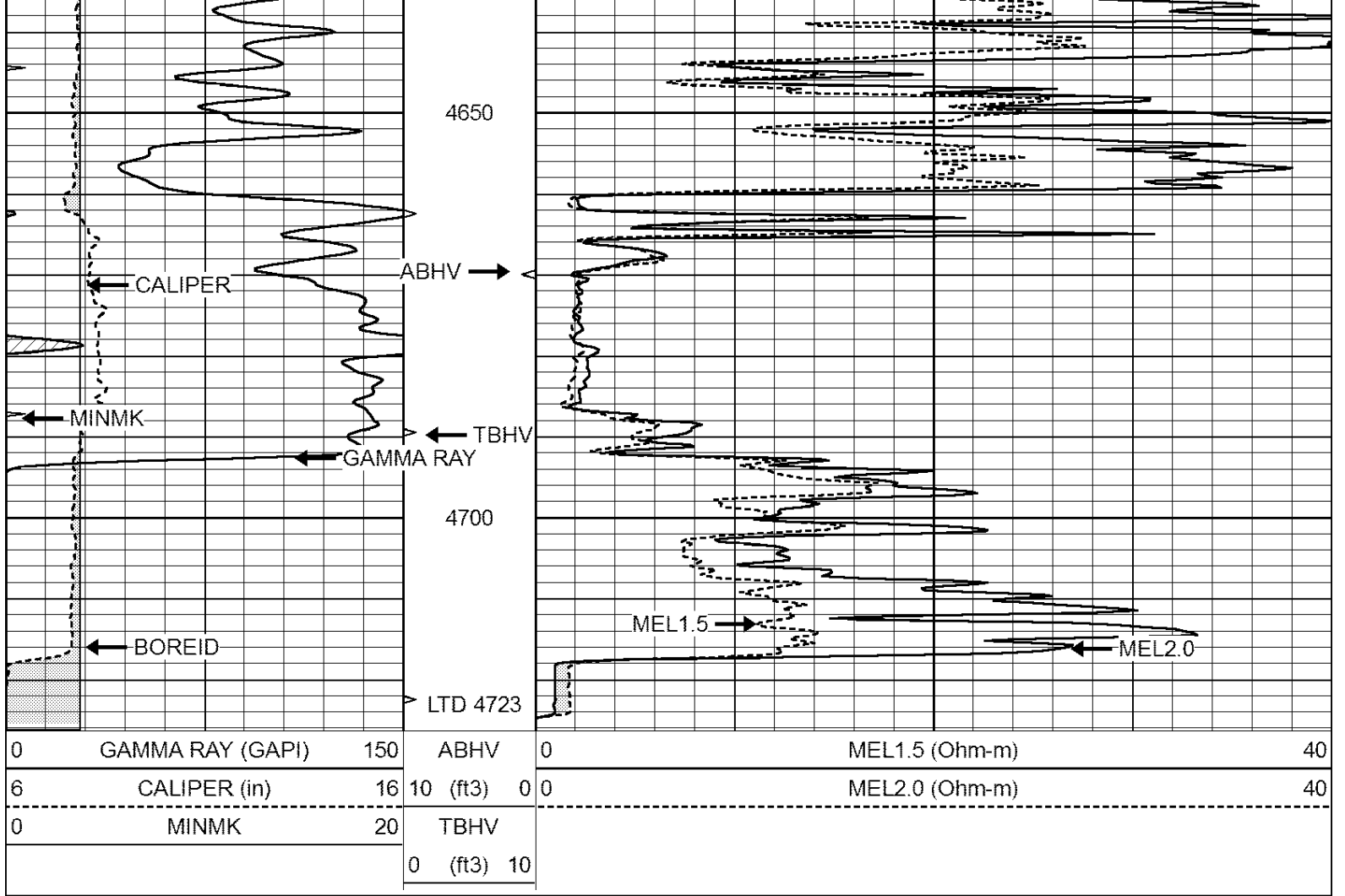
4450

4500

4550

4600

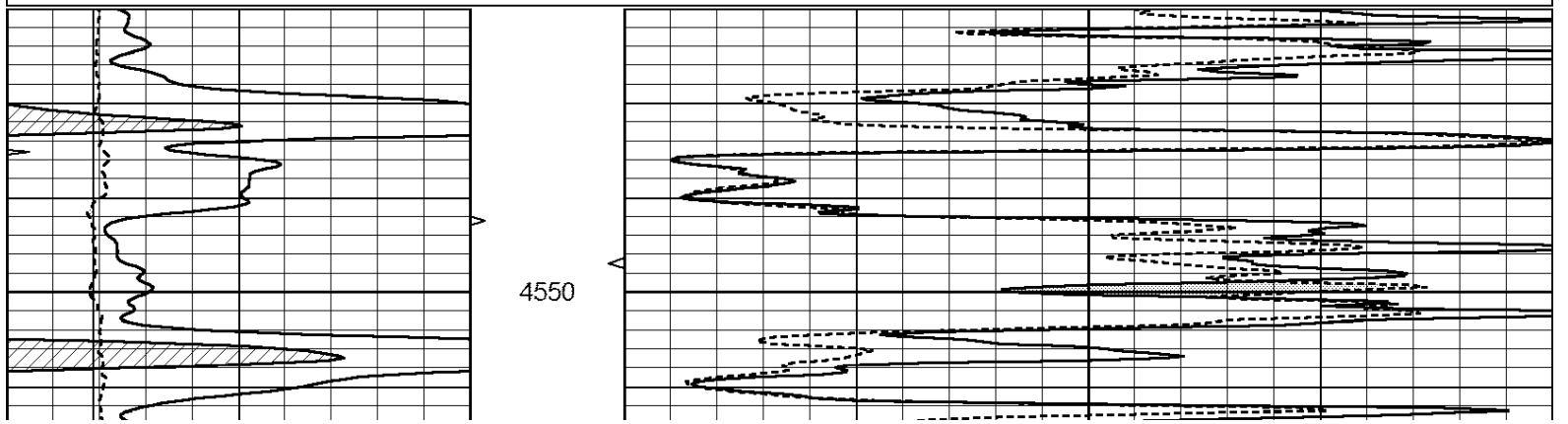


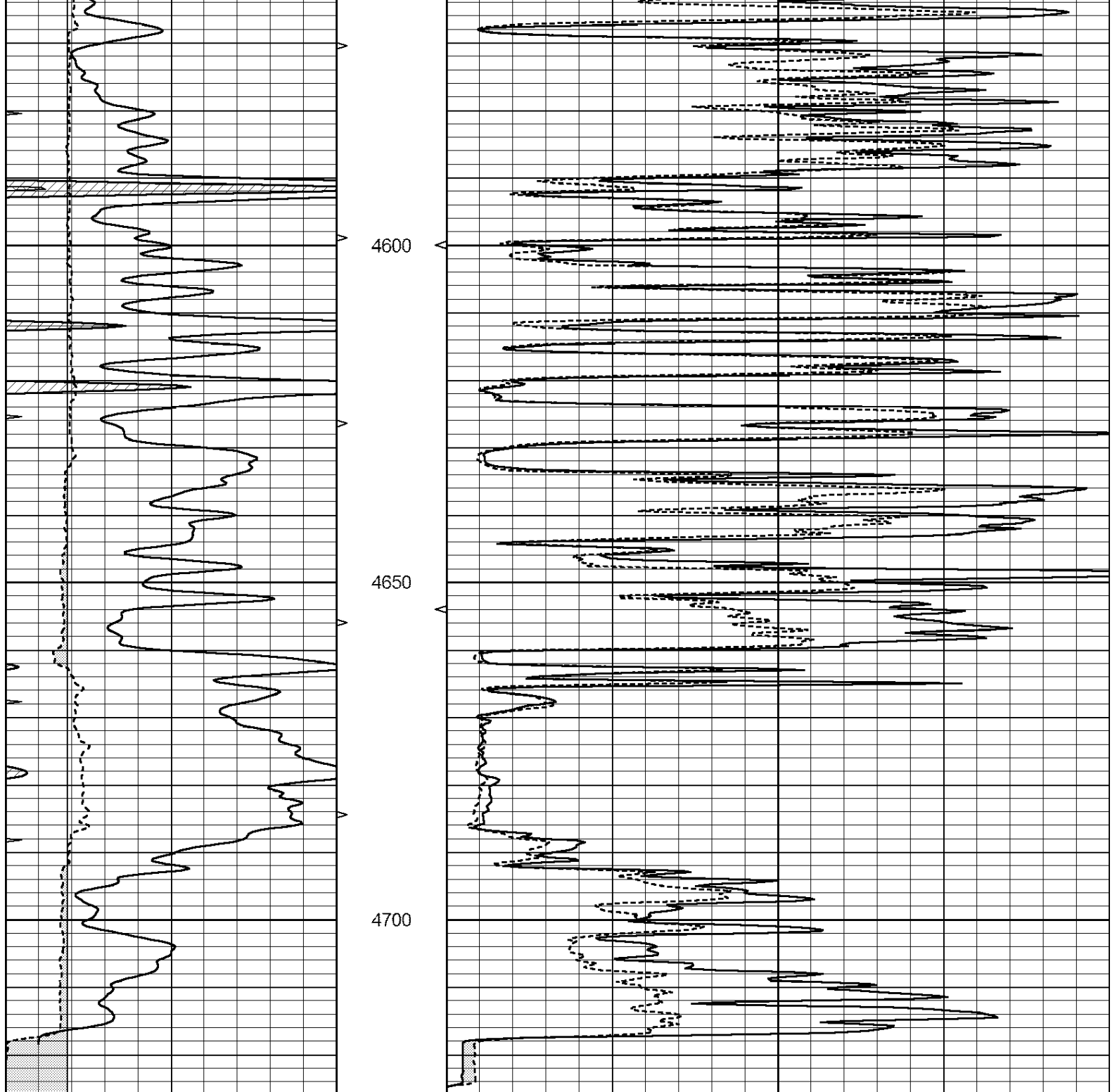


# REPEAT SECTION

Database File: 2417ddn.db  
 Dataset Pathname: pass4.1  
 Presentation Format: \_micro  
 Dataset Creation: Wed Apr 04 10:32:34 2018  
 Charted by: Depth in Feet scaled 1:240

0	GAMMA RAY (GAPI)	150	ABHV	0	MEL1.5 (Ohm-m)	40
6	CALIPER (in)	16	10 (ft3)	0	MEL2.0 (Ohm-m)	40
0	MINMK	20	TBHV			
			0 (ft3)	10		





0	GAMMA RAY (GAPI)	150	ABHV	0	MEL1.5 (Ohm-m)	40
6	CALIPER (in)	16	10 (ft3)	0	MEL2.0 (Ohm-m)	40
0	MINMK	20	TBHV			
			0 (ft3)	10		

### Calibration Report

Database File: 2417ddn.db  
 Dataset Pathname: pass4.1  
 Dataset Creation: Wed Apr 04 10:32:34 2018

### MICRO Calibration Report

Serial Number: MICRO6  
 Tool Model: PROBE  
 Performed: Wed Feb 07 06:50:26 2018

Performed:

Wed Feb 07 06:59:28 2018

Caliper Calibration:	Gain=26.601	Offset=0.403
References	Low Cal 7.000	High Cal 14.000
Readings	0.217	0.478

1.5" Calibration:	Gain=30.075	Offset=-0.400
References	Low Cal 0.000	High Cal 20.000
Readings	0.004	1.196

2" Calibration:	Gain=45.000	Offset=-1.000
References	Low Cal 0.000	High Cal 20.000
Readings	0.006	0.913

Gamma Ray Calibration Report

Serial Number:	GR2	
Tool Model:	OPEN	
Performed:	Wed Mar 14 06:10:12 2018	
Calibrator Value:	1.0	GAPI
Background Reading:	0.0	cps
Calibrator Reading:	1.0	cps
Sensitivity:	0.9500	GAPI/cps