



MIDWEST SURVEYS
LOGGING - PERFORATING - CONSULTING SERVICES
P.O. Box 68, Osawatomie, KS 66064
913 / 755 - 2128

GAMMA RAY / NEUTRON / CCL

File No. _____

Company Altavista Energy, Inc.

Well Jones No. A-10

Field Vernon

County Woodson

State Kansas

Location

3795' FSL & 4355' FEL

NW-NE-SW-NW

Twp. 24S

Rge. 10E

Sec. 1

Permanant Datum

Log Measured From

Drilling Measured From

GL

GL

GL

GL

GL

GL

GL

GL

GL

GL

GL

GL

GL

GL

GL

Other Services

Perforate

Elevation

K.B. NA

D.F. NA

GL 1051'

GL

GL

GL

GL

GL

GL

GL

GL

GL

GL

GL

GL

GL

GL

GL

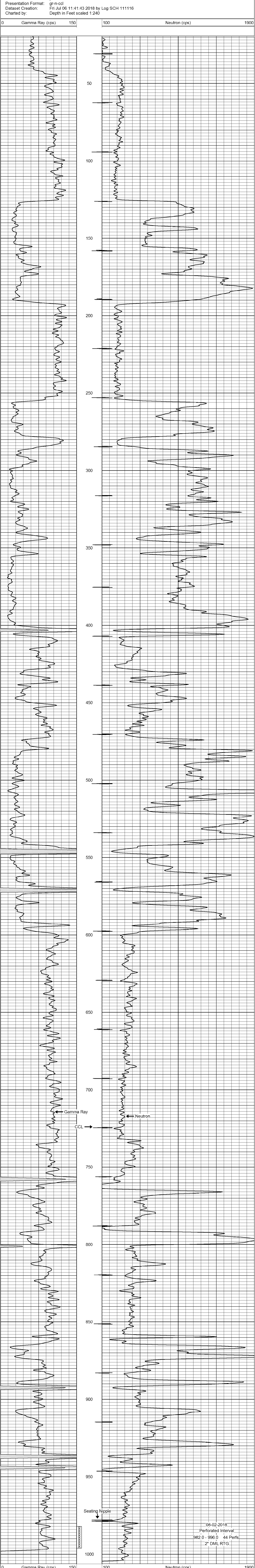
GL

GL

Comments

Drilling Contractor :
John Leis Oilfield Services

Database File: jones 10a.db
Dataset Pathname: pass1
Presentation Format: gr-n-ccl
Dataset Creation: Fri Jul 06 11:41:43 2018 by Log SCH 111116
Charted by: Depth in Feet scaled 1:240



08-02-2018
Perforated Interval
982.0 - 996.0 44 Perfs.
2" DML RTG