



**MICRO  
LOG**

Company DOWNING NELSON OIL COMPANY, INC.  
Well HEBERLEIN #1-25  
Field FLAX  
County TREGO  
State KANSAS

Company DOWNING NELSON OIL COMPANY, INC.  
Well HEBERLEIN #1-25  
Field FLAX  
County TREGO  
State KANSAS

Location: API #: 15-195-23048-0000  
1662' FSL & 335' FWL  
SEC 25 TWP 13S RGE 21W  
Permanent Datum GROUND LEVEL Elevation 2327  
Log Measured From KELLY BUSHING 8' A.G.L.  
Drilling Measured From KELLY BUSHING  
Other Services  
CDL/CNL  
DIL/SON  
Elevation  
K.B. 2335  
D.F. 2333  
G.L. 2327

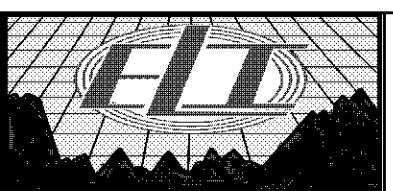
Date	6/8/18		
Run Number	TWO		
Depth Driller	4108		
Depth Logger	4107		
Bottom Logged Interval	4089		
Top Log Interval	3250		
Casing Driller	8 5/8" @ 221		
Casing Logger	220		
Bit Size	7 7/8		
Type Fluid in Hole	CHEMICAL MUD	CHLORIDES 7000 PPM	
Density / Viscosity	9.2/53		
PH / Fluid Loss	9.5/8.8		
Source of Sample	FLOWLINE		
Rm @ Meas. Temp	.65 @ 98F		
Rmt @ Meas. Temp	.48 @ 98F		
Rmc @ Meas. Temp	.78 @ 98F		
Source of Rmf / Rmc	MEASUREMENT		
Rm @ BHT	.54 @ 117F		
Time Circulation Stopped	2 HOURS		
Time Logger on Bottom	////		
Maximum Recorded Temperature	117F		
Equipment Number	3802		
Location	HAYS, KANSAS		
Recorded By	JASON CAPPELLUCCI		
Witnessed By	MARC DOWNING		

<<< Fold Here >>>

All interpretations are opinions based on inferences from electrical or other measurements and we cannot and do not guarantee the accuracy or correctness of any interpretation, and we shall not, except in the case of gross or willful negligence on our part, be liable or responsible for any loss, costs, damages, or expenses incurred or sustained by anyone resulting from any interpretation made by any of our officers, agents or employees. These interpretations are also subject to our general terms and conditions set out in our current Price Schedule.

**Comments**

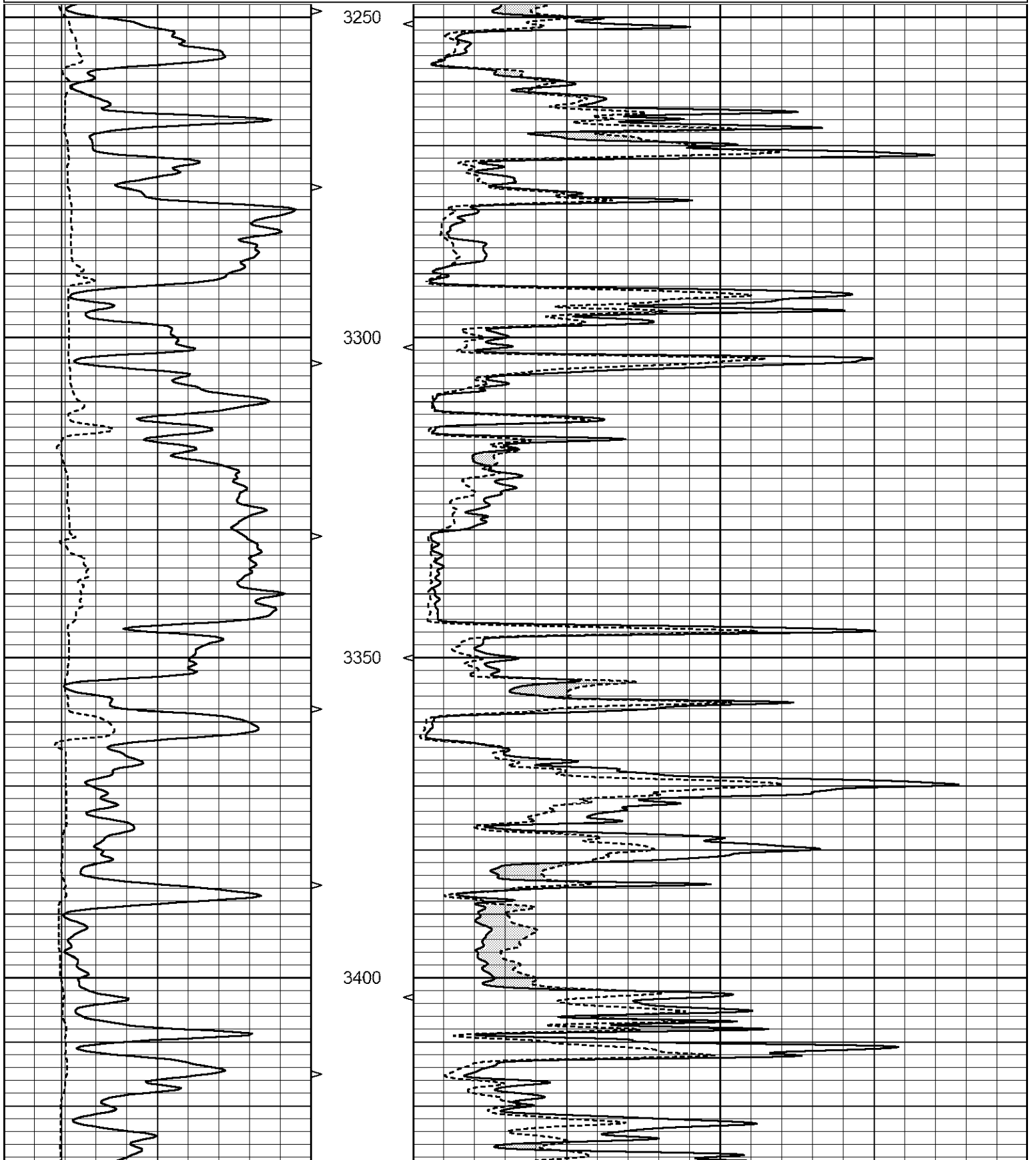
THANK YOU FOR USING ELI WIRELINE SERVICES, HAYS, KS. ( 785 ) 628-6395  
DIRECTIONS  
ELLIS, KS. - 2 WEST ON HWY 40 TO RD. 400 - 3 3/4 SOUTH - EAST INTO

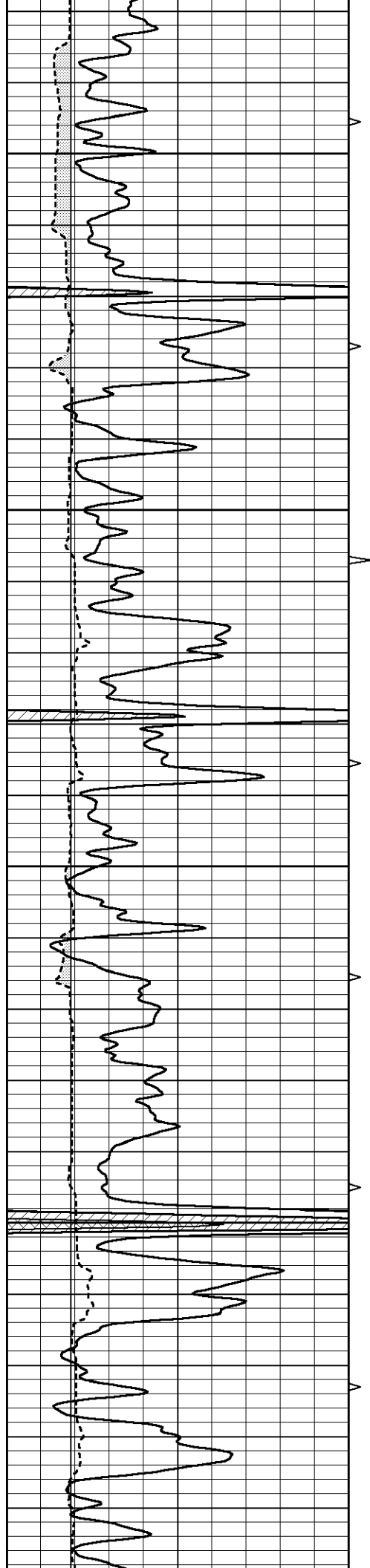


**MAIN SECTION**

Database File 2505ddn8.db  
 Dataset Pathname pass6.1  
 Presentation Format \_micro  
 Dataset Creation Fri Jun 08 21:32:29 2018  
 Charted by Depth in Feet scaled 1:240

0	GAMMA RAY (GAPI)	150	ABHV	0	MEL1.5 (Ohm-m)	40
6	CALIPER (in)	16	10 (ft3)	0	MEL2.0 (Ohm-m)	40
			TBHV			
			0 (ft3)	10		



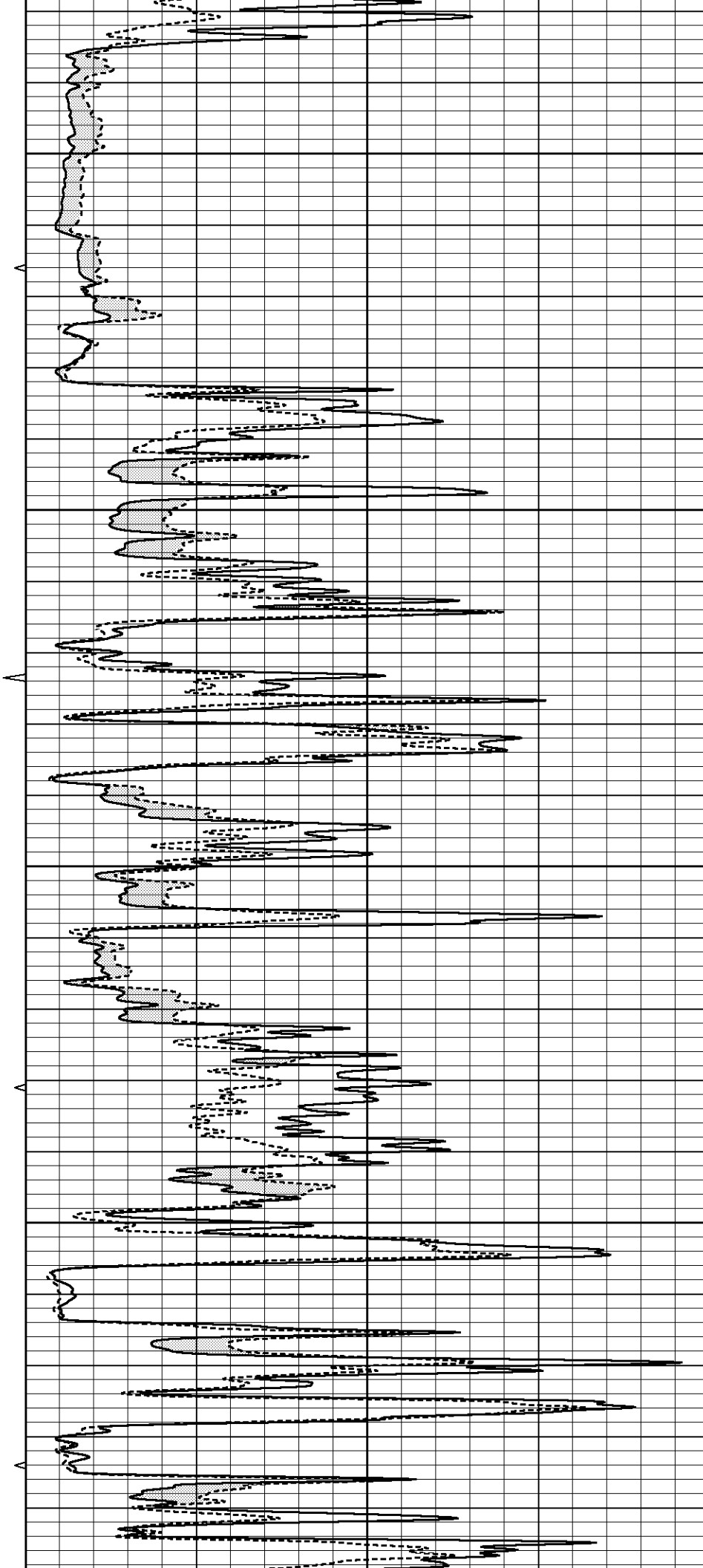


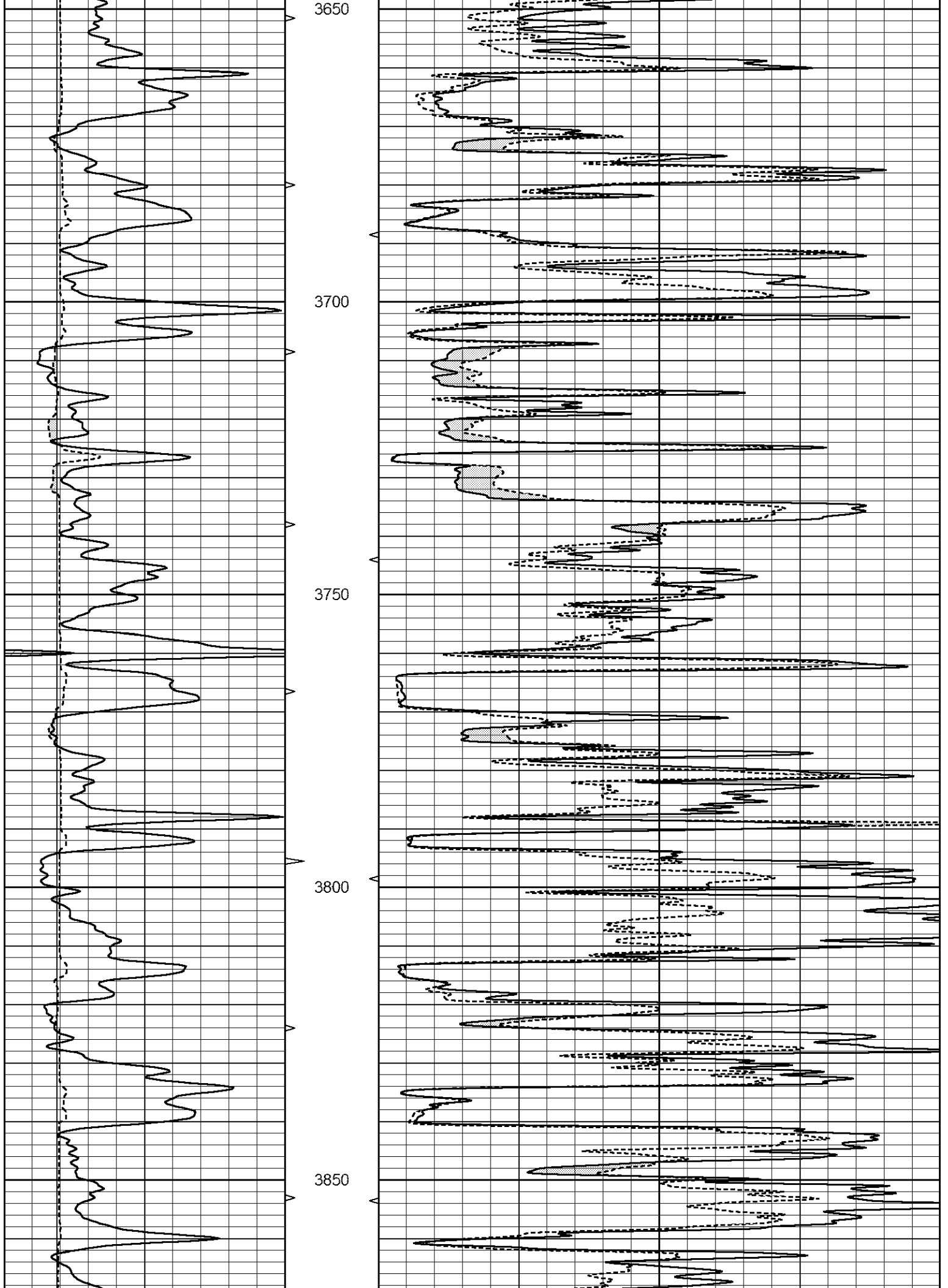
3450

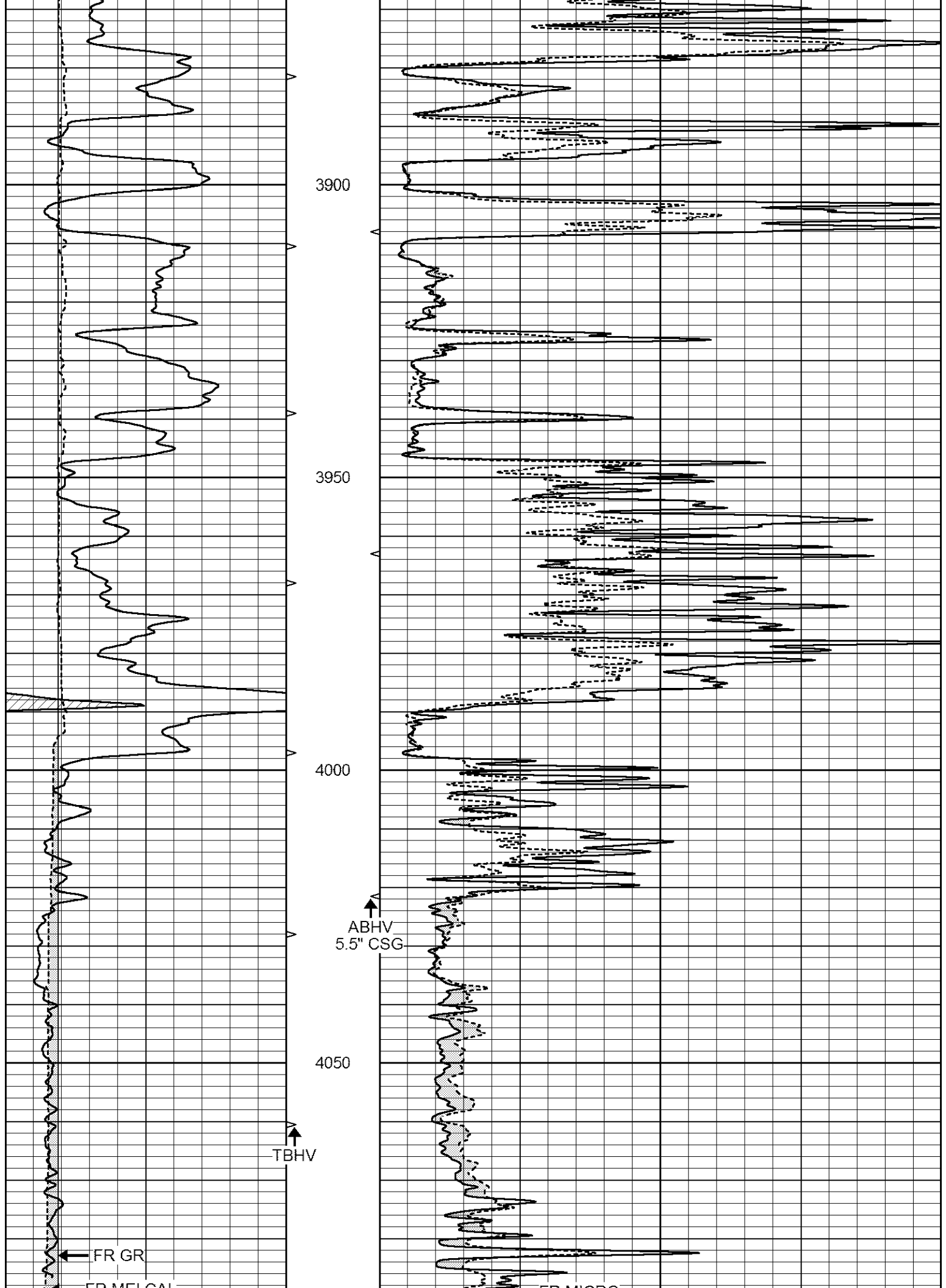
3500

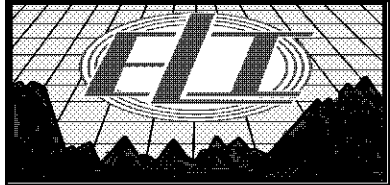
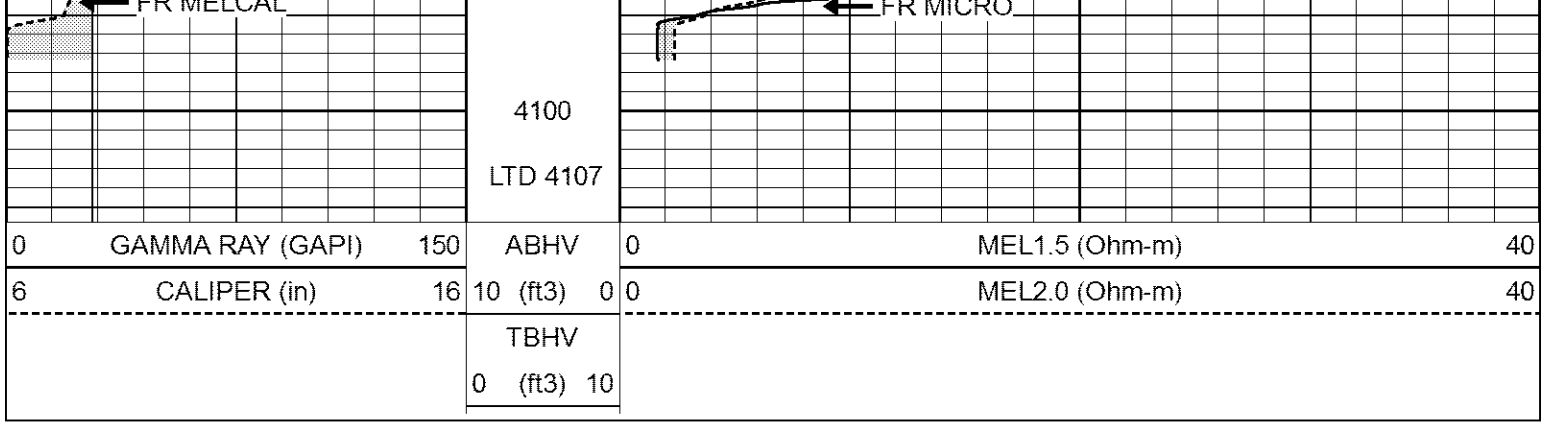
3550

3600



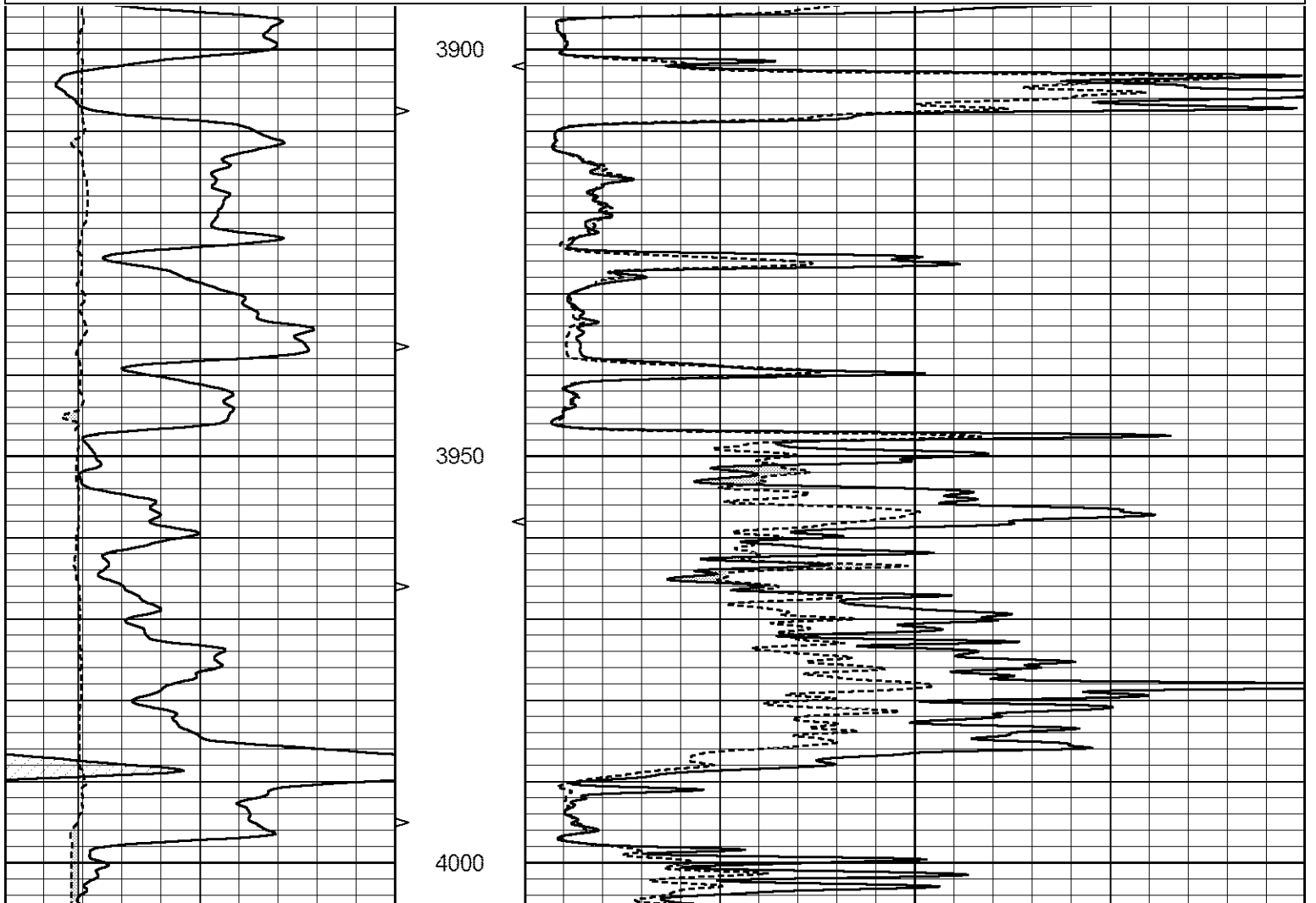
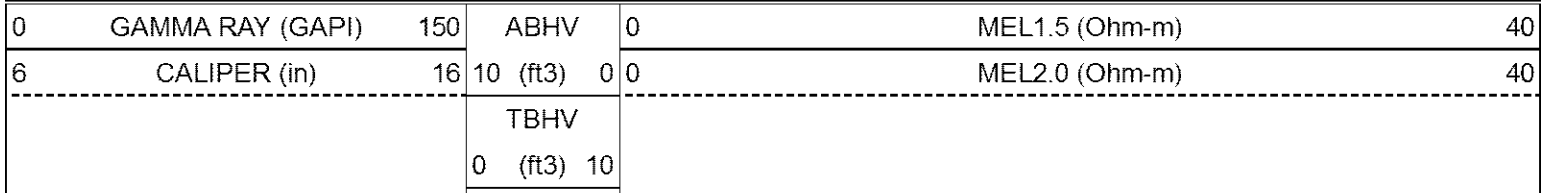


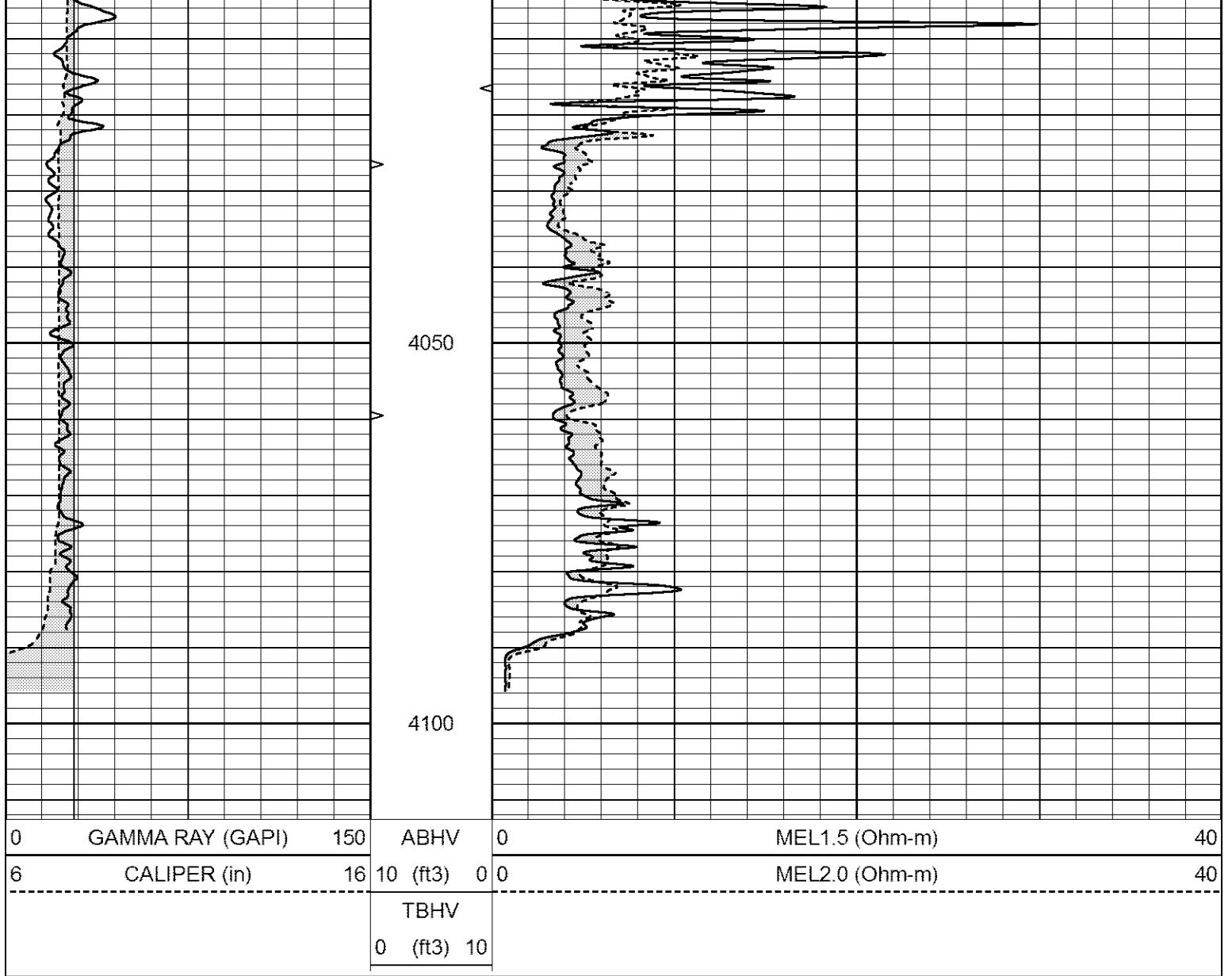




# REPEAT SECTION

Database File 2505ddn8.db  
 Dataset Pathname pass5.1  
 Presentation Format \_micro  
 Dataset Creation Fri Jun 08 21:21:58 2018  
 Charted by Depth in Feet scaled 1:240





### Calibration Report

Database File 2505ddn8.db  
 Dataset Pathname pass5.1  
 Dataset Creation Fri Jun 08 21:21:58 2018

### MICRO\_USR Calibration Report

Serial Number: 070910  
 Tool Model: Probel  
 Performed: Thu May 17 22:07:33 2018

Caliper Calibration: Gain=7.336 Offset=3.117  
 References Low Cal 8.000 High Cal 14.000  
 Readings 0.652 1.470

1.5" Calibration: Gain=25.000 Offset=-0.067  
 References Low Cal 0.000 High Cal 20.000  
 Readings 0.004 1.335

2" Calibration: Gain=45.000 Offset=-0.779  
 References Low Cal 0.000 High Cal 20.000  
 Readings 0.000 1.335

References	0.000	20.000
Readings	0.004	1.029

Microlog Calibration Report

Serial-Model: Performed:	070910-ProbeL (Not Performed)
-----------------------------	----------------------------------

	Readings			References			Results	
	Zero	Cal		Zero	Cal		m	b
Normal	0.0000	1.0000	V	0.0000	1.0000	Ohm-m	1.0000	0.0000
Inverse	0.0000	1.0000	V	0.0000	1.0000	Ohm-m	1.0000	0.0000
Caliper	0.0000	1.0000	V	0.0000	1.0000	in	1.0000	0.0000

Gamma Ray Calibration Report

Serial Number:	7	
Tool Model:	Probe1	
Performed:	Wed Jun 29 11:10:58 2016	
Calibrator Value:	1.0	GAPI
Background Reading:	0.0	cps
Calibrator Reading:	1.0	cps
Sensitivity:	0.2600	GAPI/cps