



**SONIC
LOG**

Company DOWNING NELSON OIL COMPANY, INC.
Well HEBERLEIN #1-25
Field FLAX
County TREGO
State KANSAS

Company DOWNING NELSON OIL COMPANY, INC.
Well HEBERLEIN #1-25
Field FLAX
County TREGO
State KANSAS

Location: API #: 15-195-23048-0000
1662' FSL & 335' FWL
SEC 25 TWP 13S RGE 21W
Permanent Datum GROUND LEVEL Elevation 2327
Log Measured From KELLY BUSHING 8' A.G.L.
Drilling Measured From KELLY BUSHING
Elevation
K.B. 2335
D.F. 2333
G.L. 2327

Date	6/8/18		
Run Number	TWO		
Depth Driller	4108		
Depth Logger	4107		
Bottom Logged Interval	4097		
Top Log Interval	200		
Casing Driller	8 5/8" @ 221		
Casing Logger	220		
Bit Size	7 7/8		
Type Fluid in Hole	CHEMICAL MUD	CHLORIDES 7000 PPM	
Density / Viscosity	9.2/53		
PH / Fluid Loss	9.5/8.8		
Source of Sample	FLOWLINE		
Rm @ Meas. Temp	.65 @ 98F		
Rmt @ Meas. Temp	.48 @ 98F		
Rmc @ Meas. Temp	.78 @ 98F		
Source of Rmf / Rmc	MEASUREMENT		
Rm @ BHT	.54 @ 117F		
Time Circulation Stopped	2 HOURS		
Time Logger on Bottom	////		
Maximum Recorded Temperature	117F		
Equipment Number	3802		
Location	HAYS, KANSAS		
Recorded By	JASON CAPPELLUCCI		
Witnessed By	MARC DOWNING		

<<< Fold Here >>>

All interpretations are opinions based on inferences from electrical or other measurements and we cannot and do not guarantee the accuracy or correctness of any interpretation, and we shall not, except in the case of gross or willful negligence on our part, be liable or responsible for any loss, costs, damages, or expenses incurred or sustained by anyone resulting from any interpretation made by any of our officers, agents or employees. These interpretations are also subject to our general terms and conditions set out in our current Price Schedule.

Comments

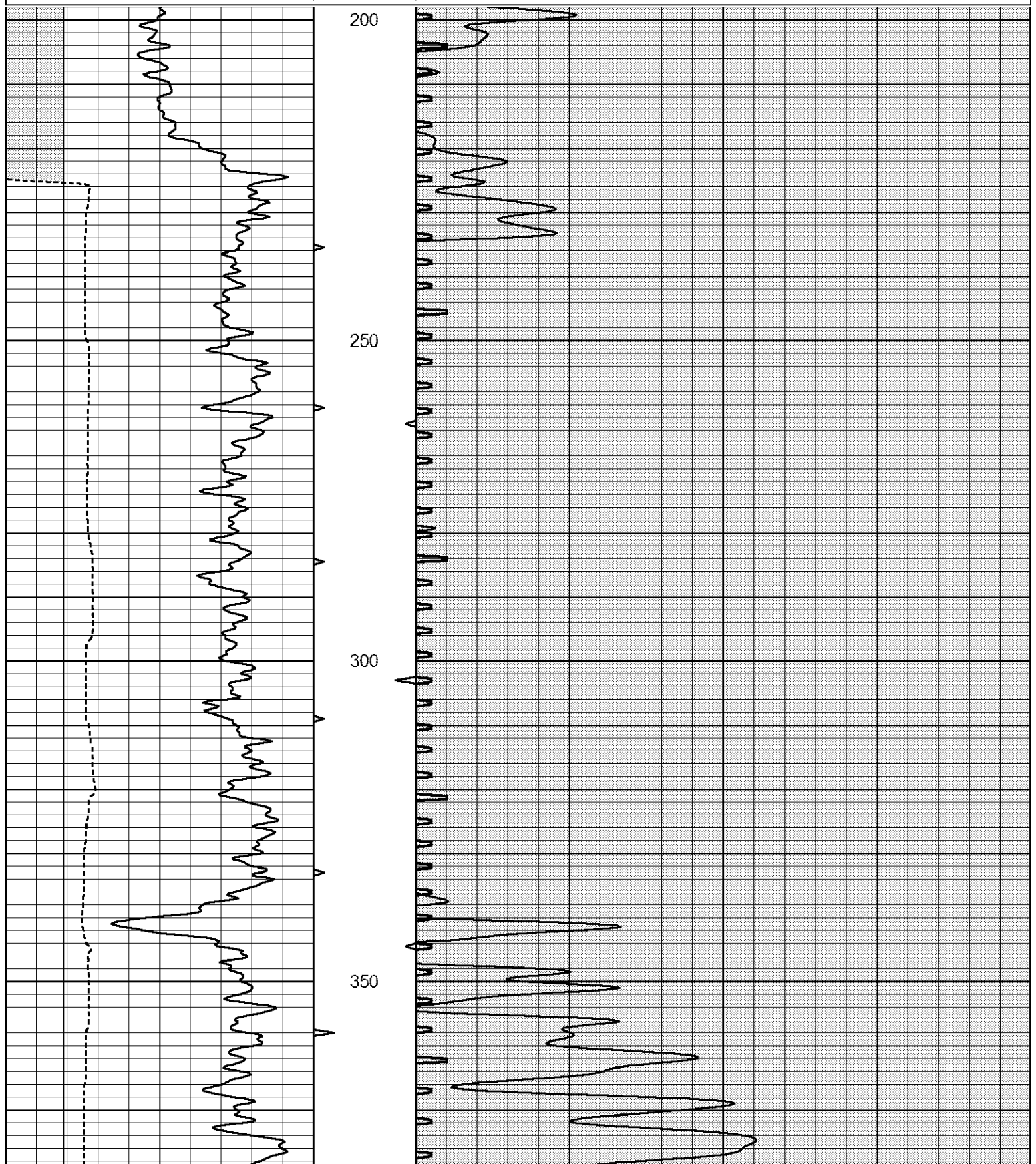
THANK YOU FOR USING ELI WIRELINE SERVICES, HAYS, KS. (785) 628-6395
DIRECTIONS
ELLIS, KS. - 2 WEST ON HWY 40 TO RD. 400 - 3 3/4 SOUTH - EAST INTO

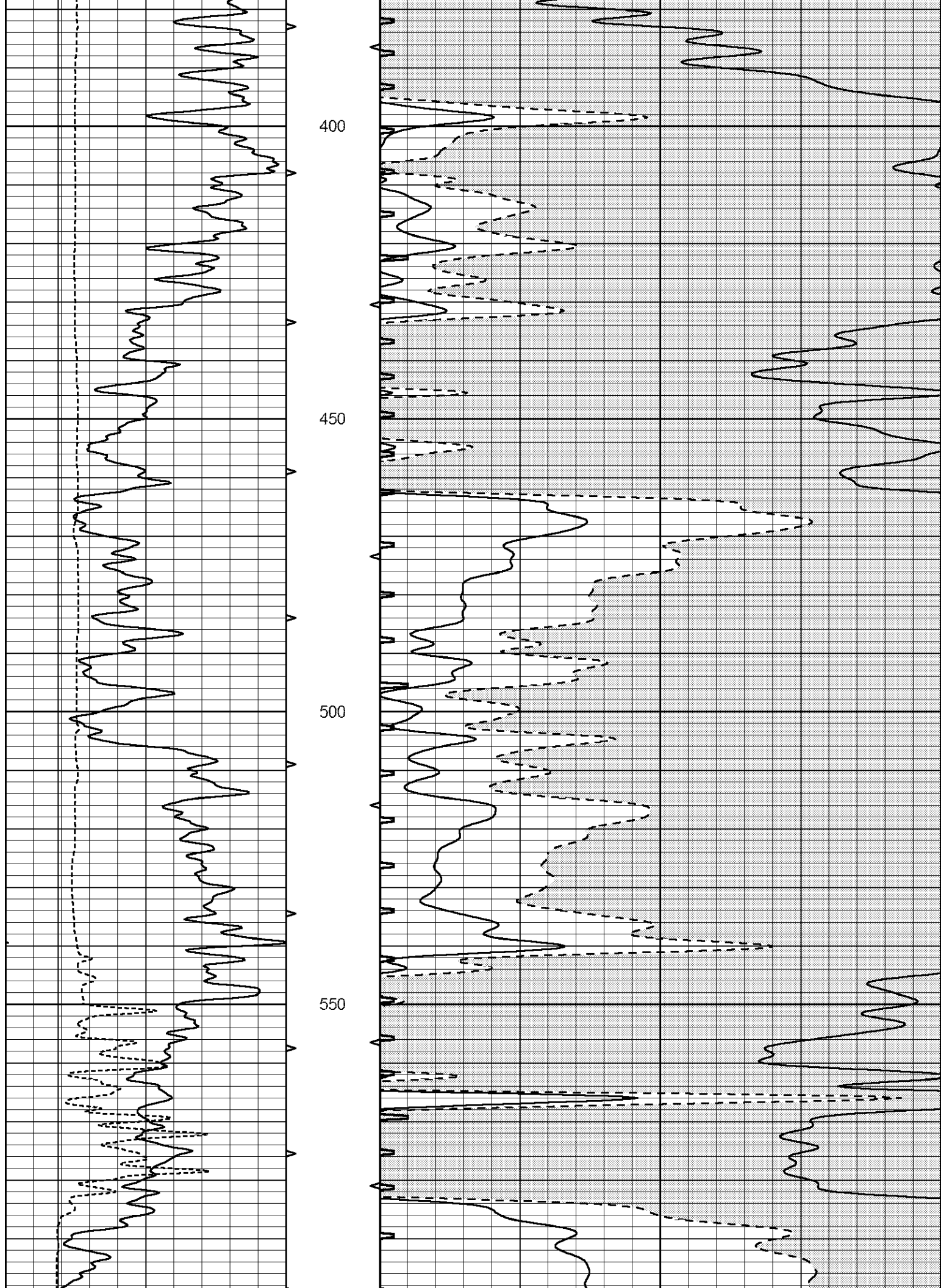


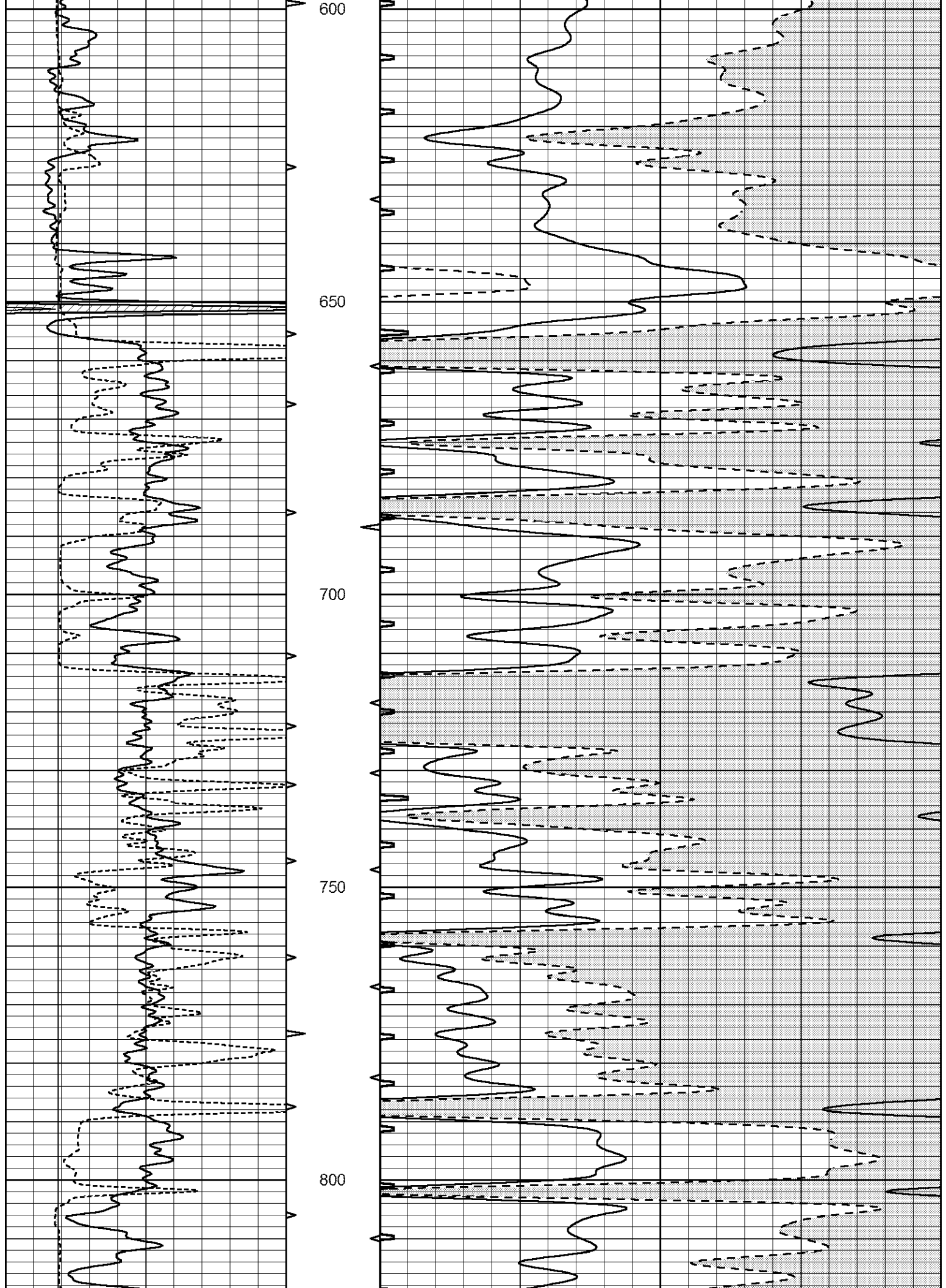
MAIN SECTION

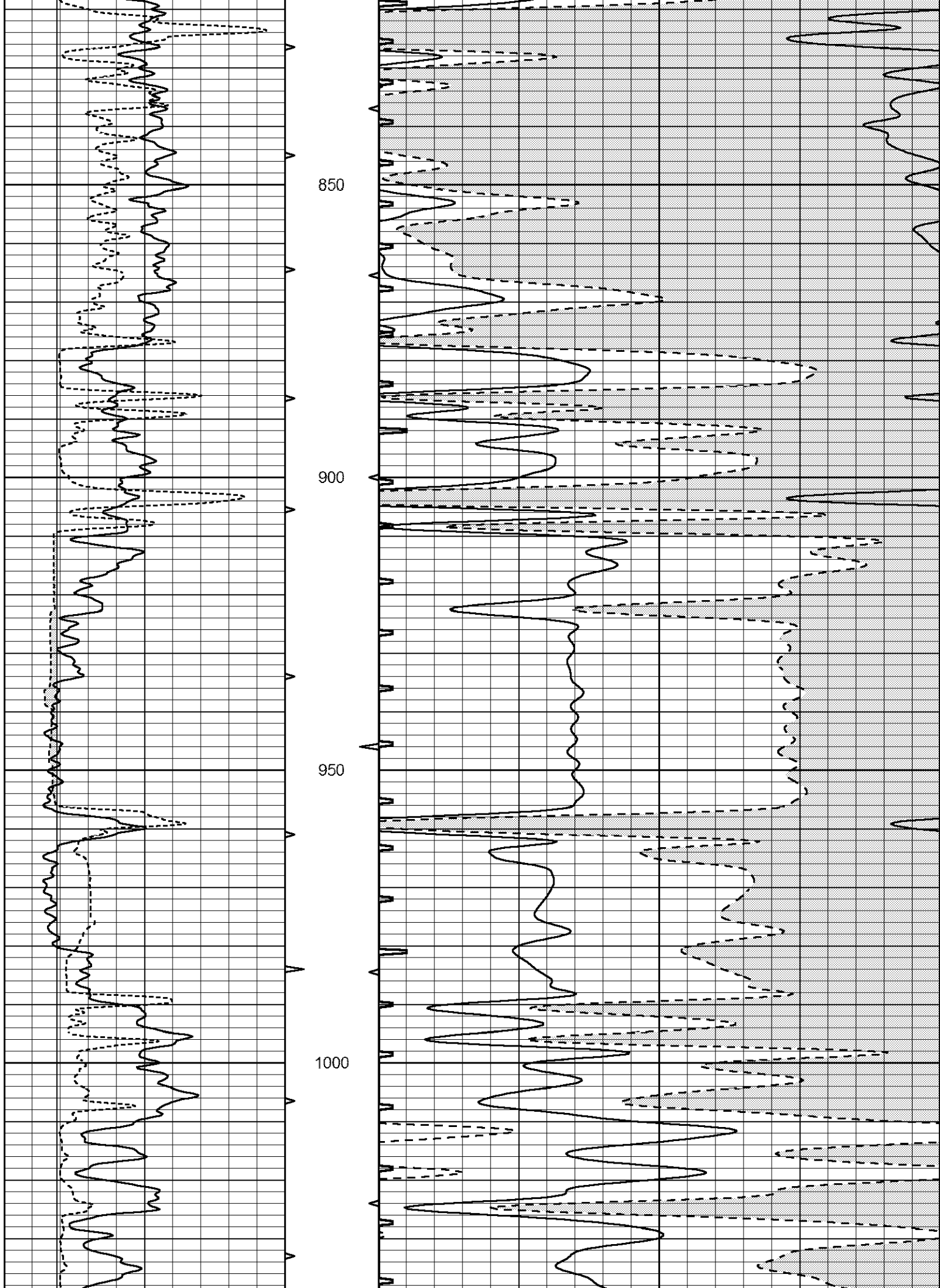
Database File 2505ddn8.db
 Dataset Pathname pass6
 Presentation Format _slt
 Dataset Creation Fri Jun 08 21:09:57 2018
 Charted by Depth in Feet scaled 1:240

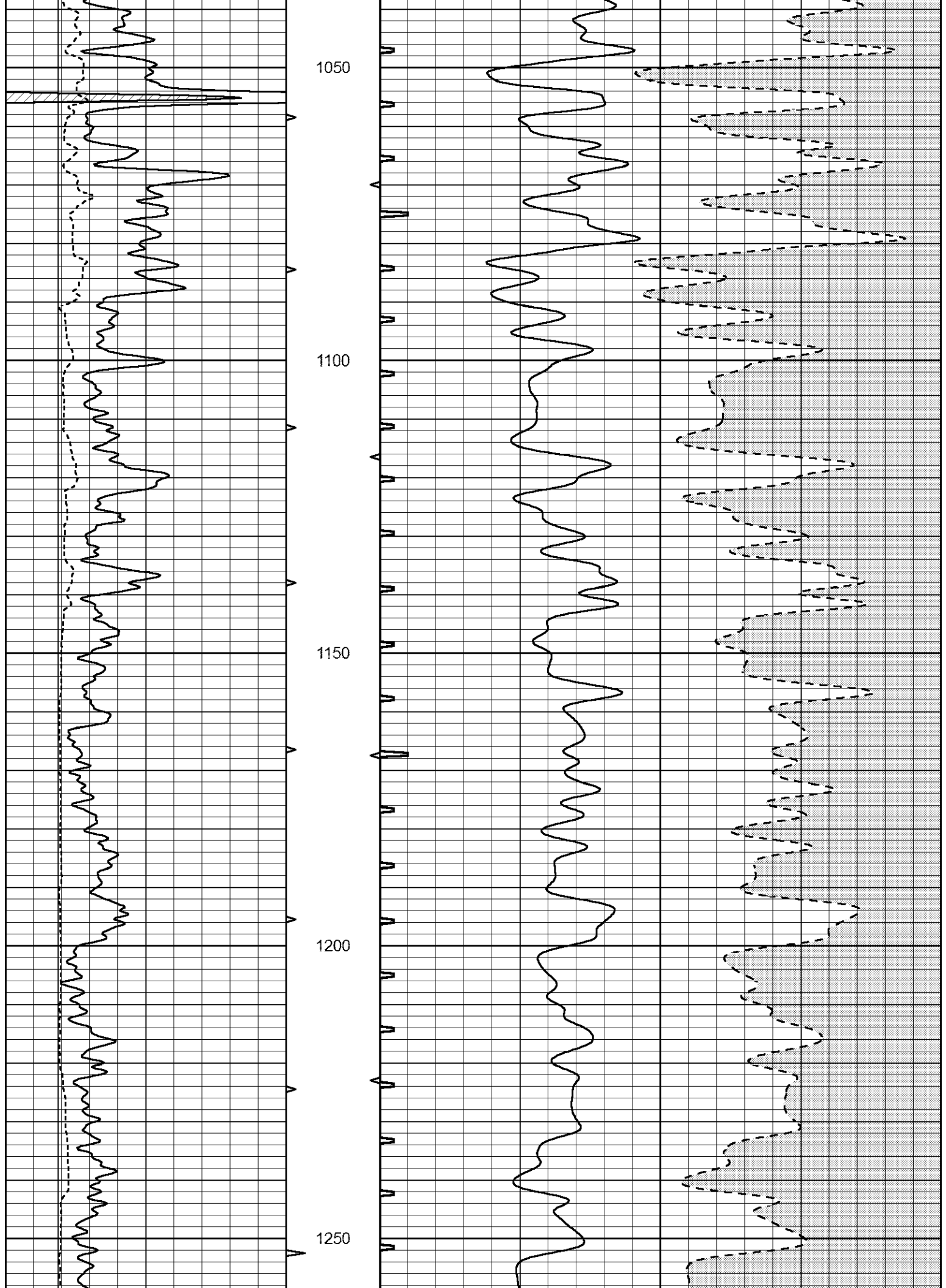
0	GAMMA RAY (GAPI)	150	ABHV	140	DELTA TIME (usec/ft)	40	
6	CALIPER (in)	16	10 (ft3)	0	30	SONIC POROSITY (pu)	-10
			TBHV	0	ITT (msec)	20	
			0 (ft3)	10			

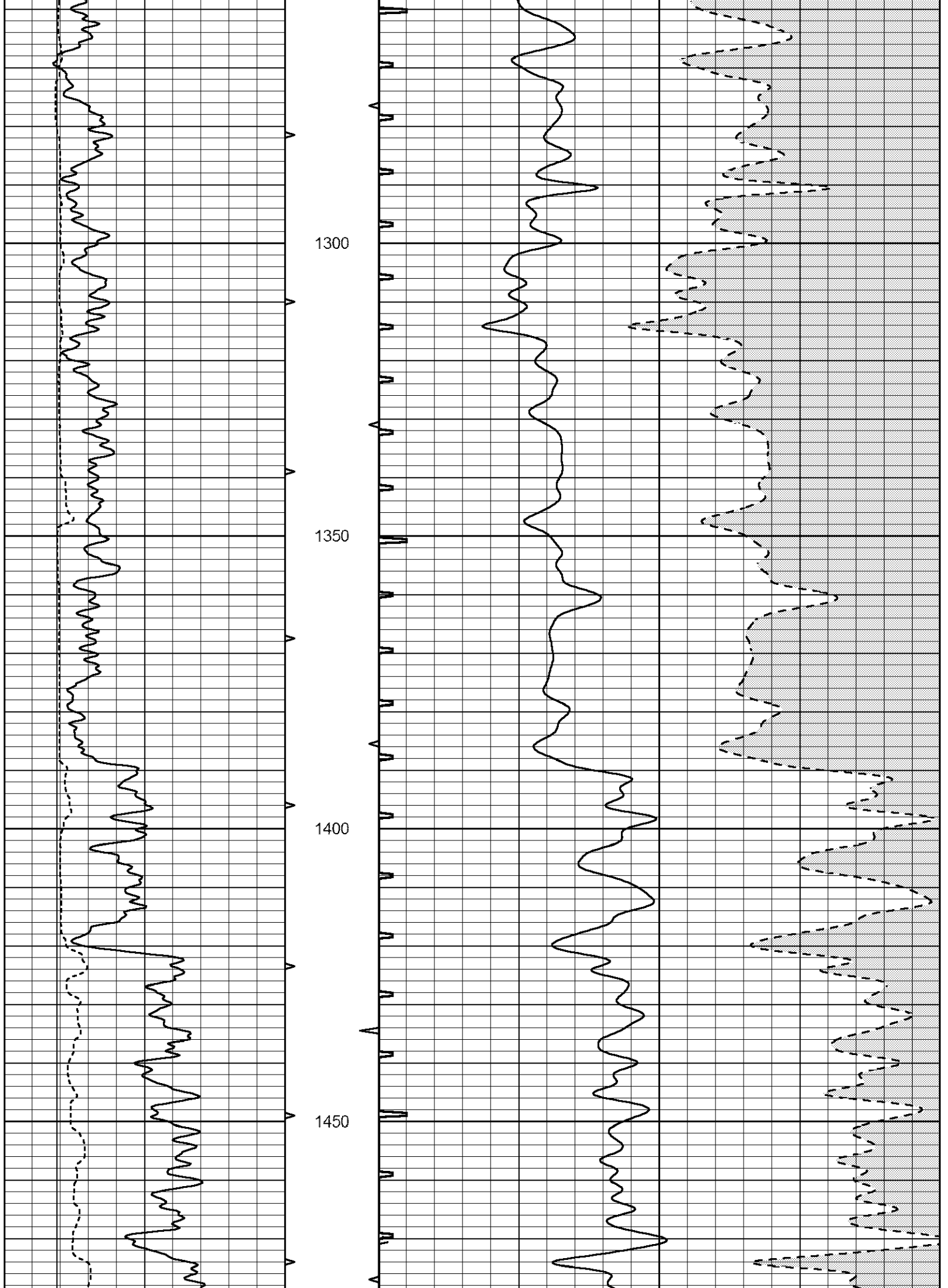


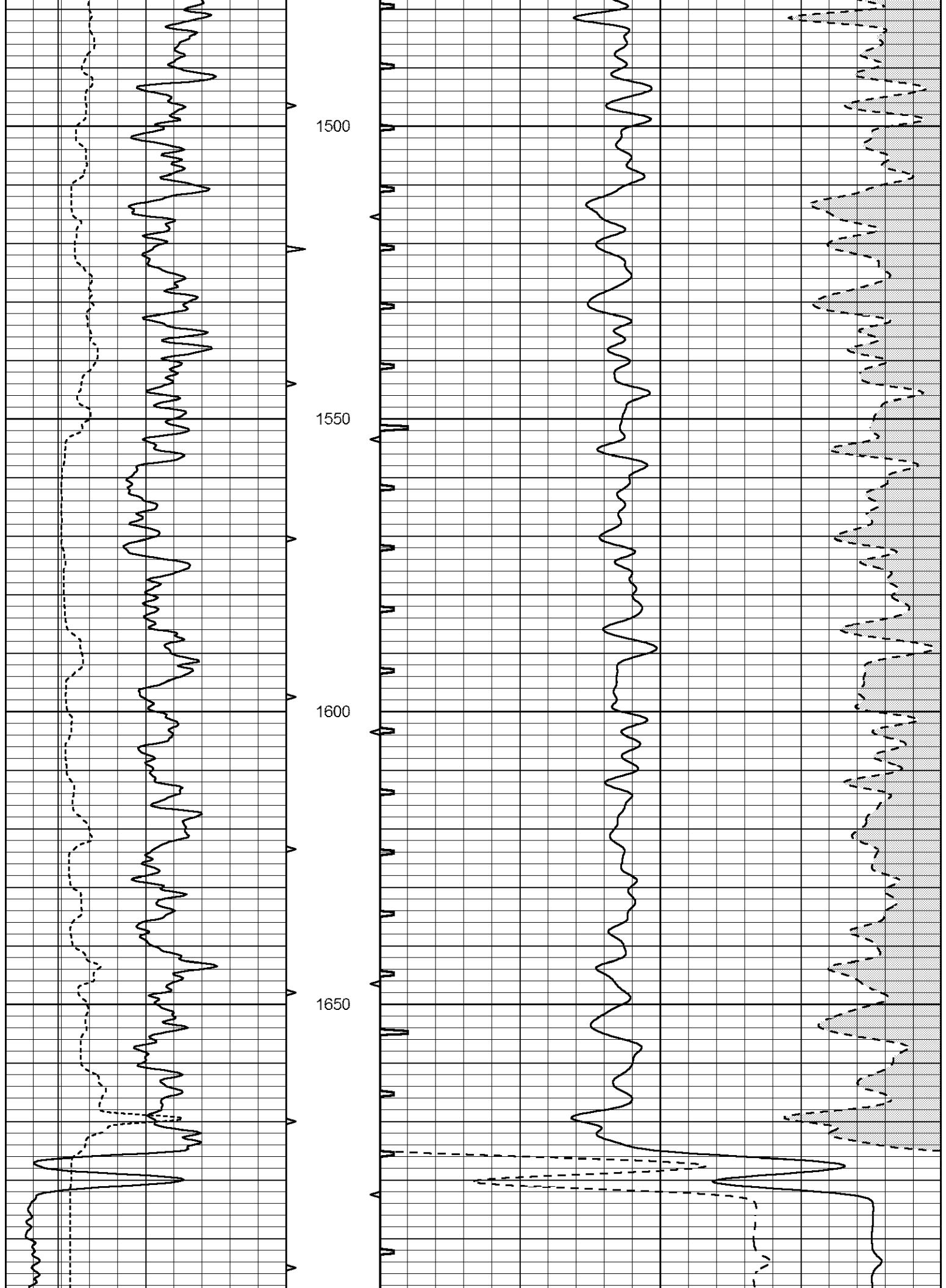


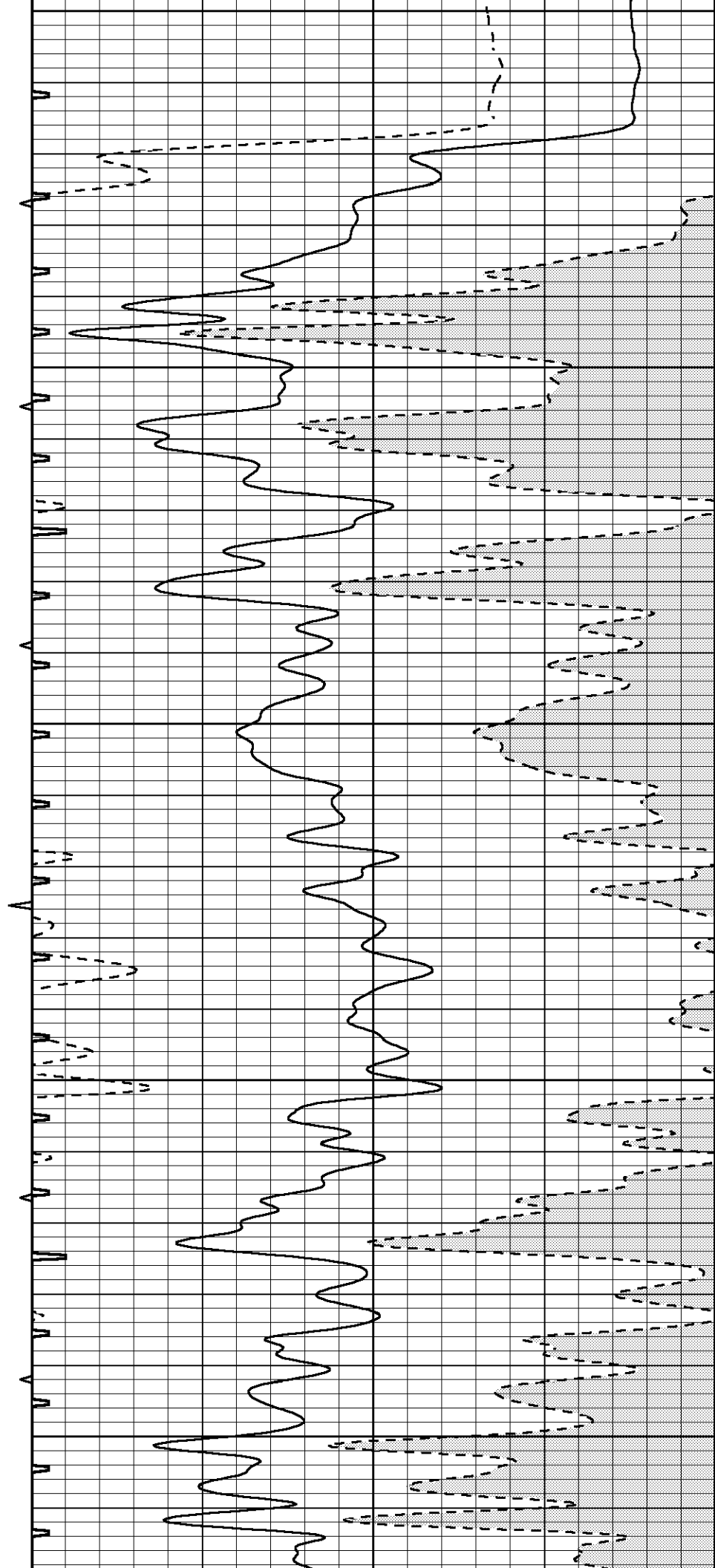
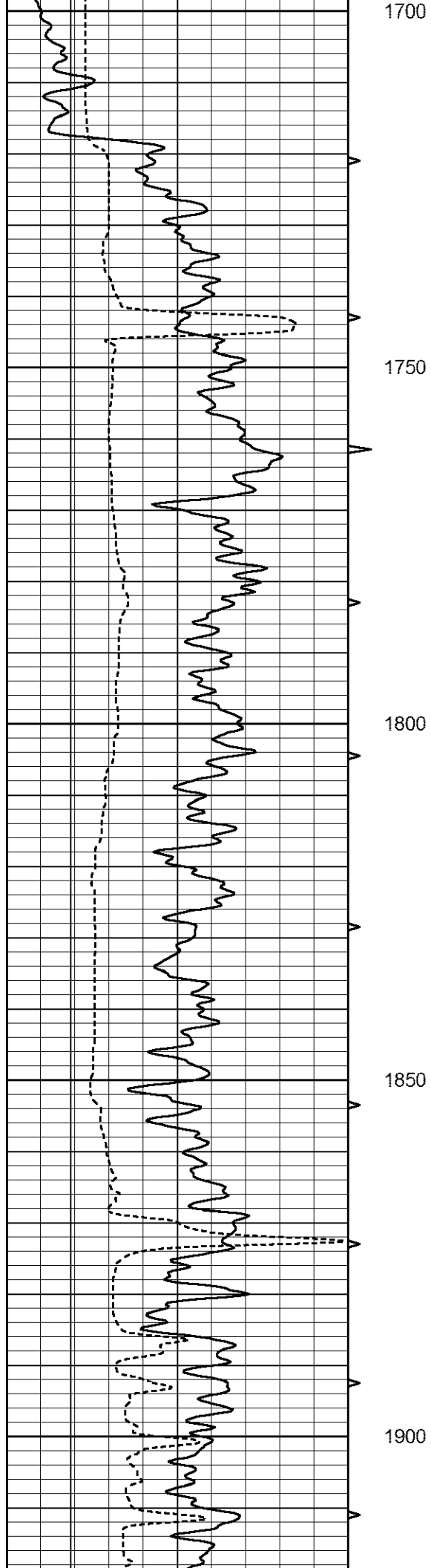


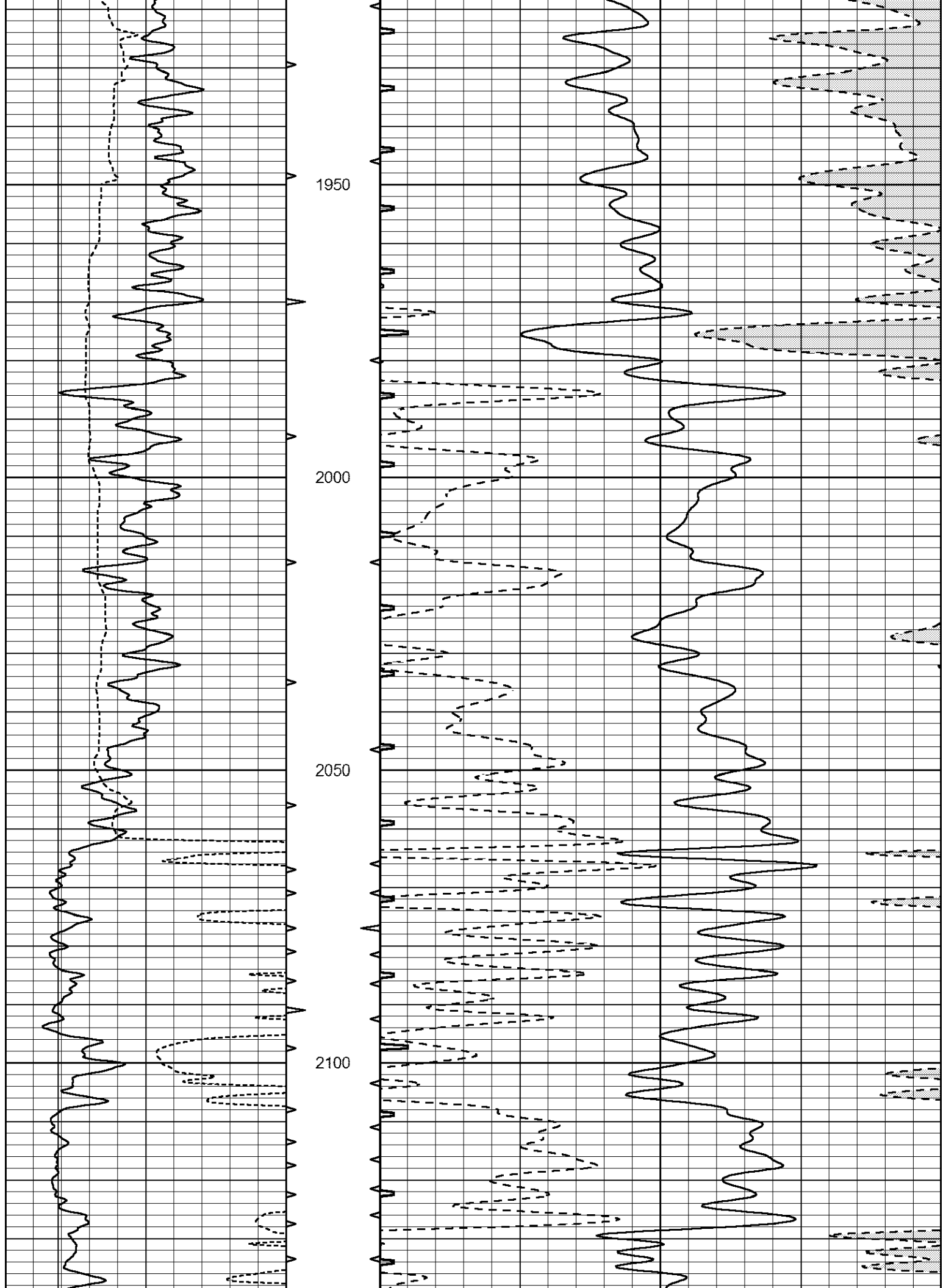


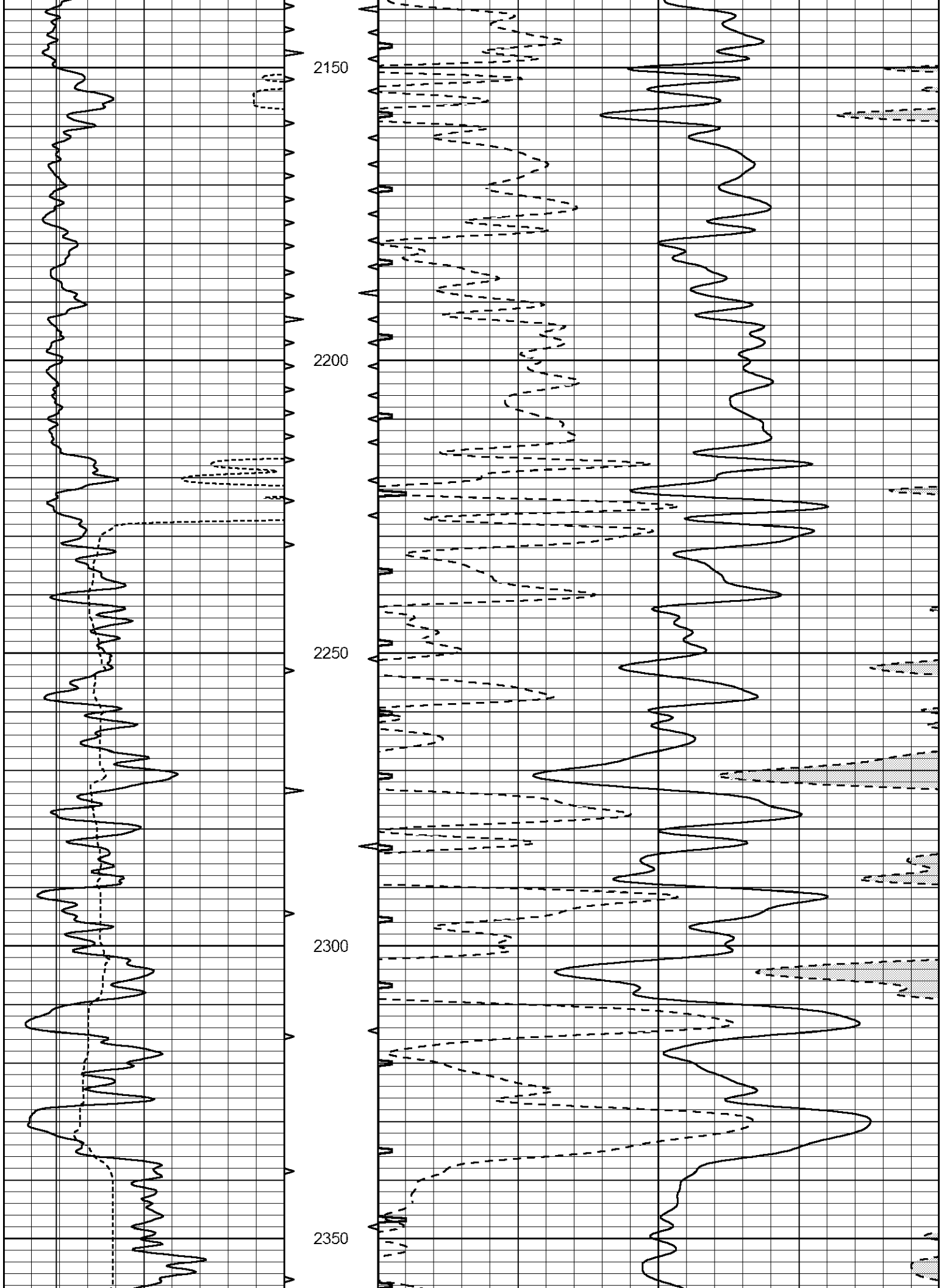


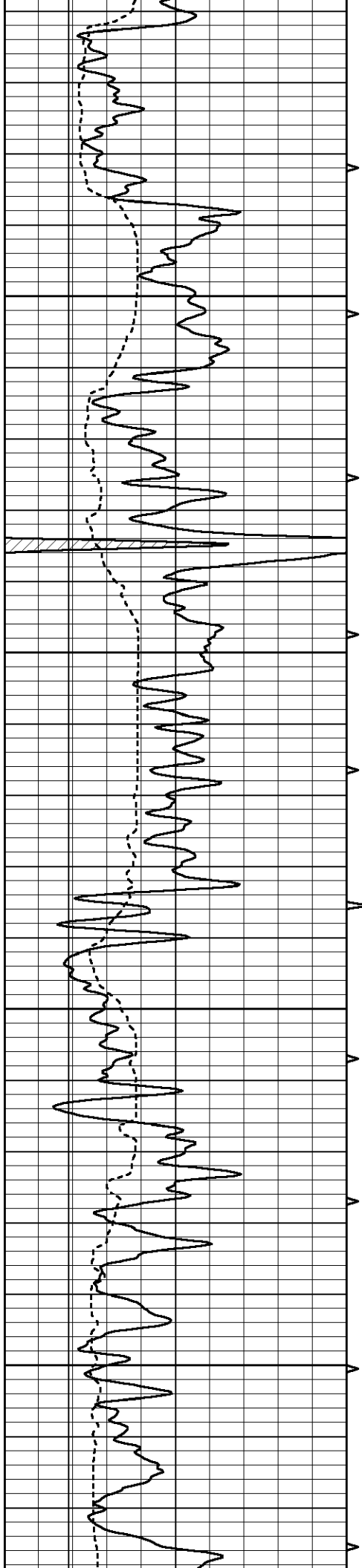










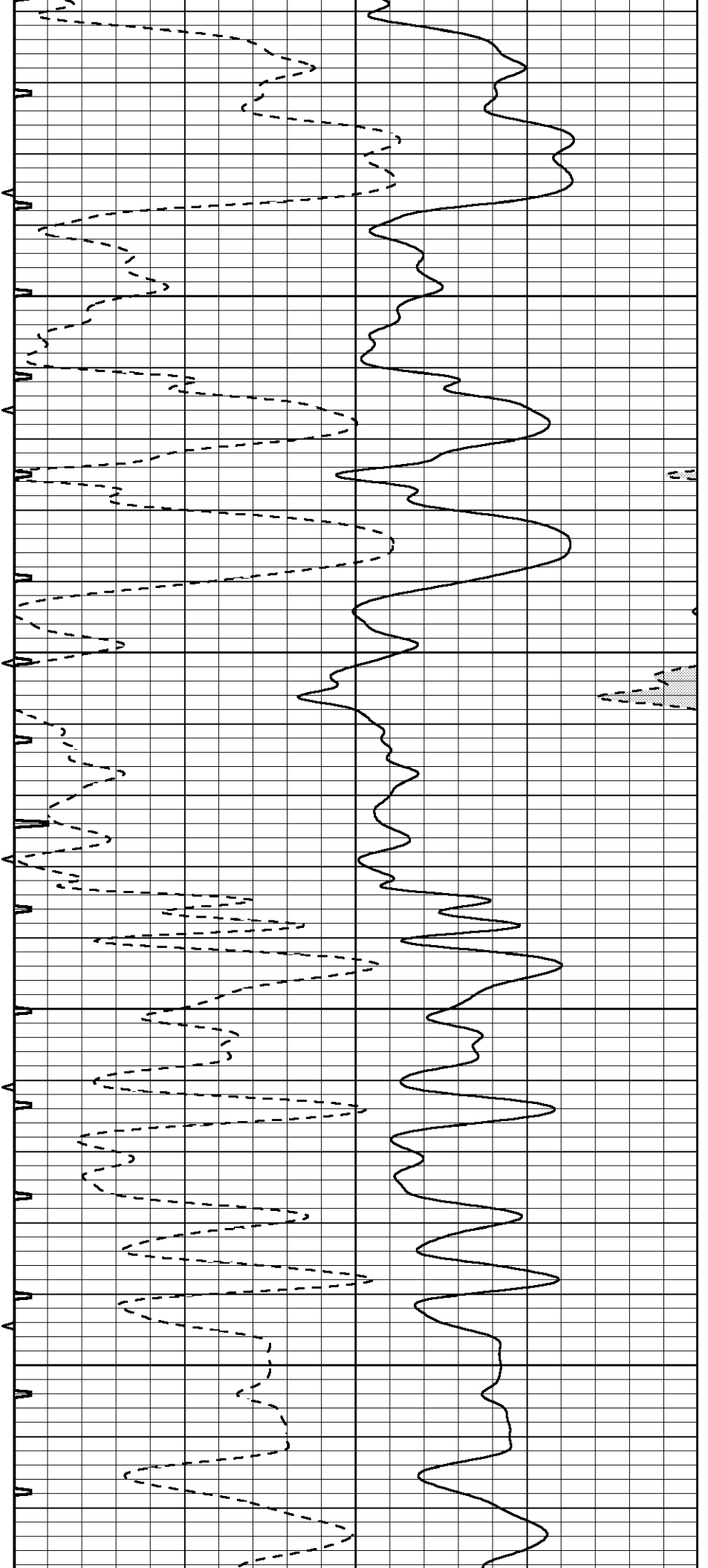


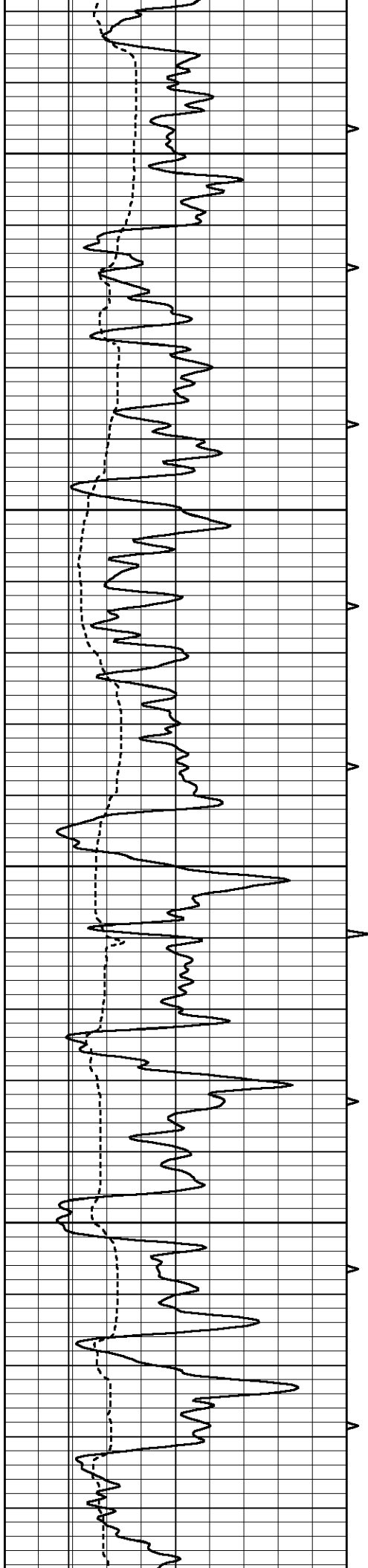
2400

2450

2500

2550



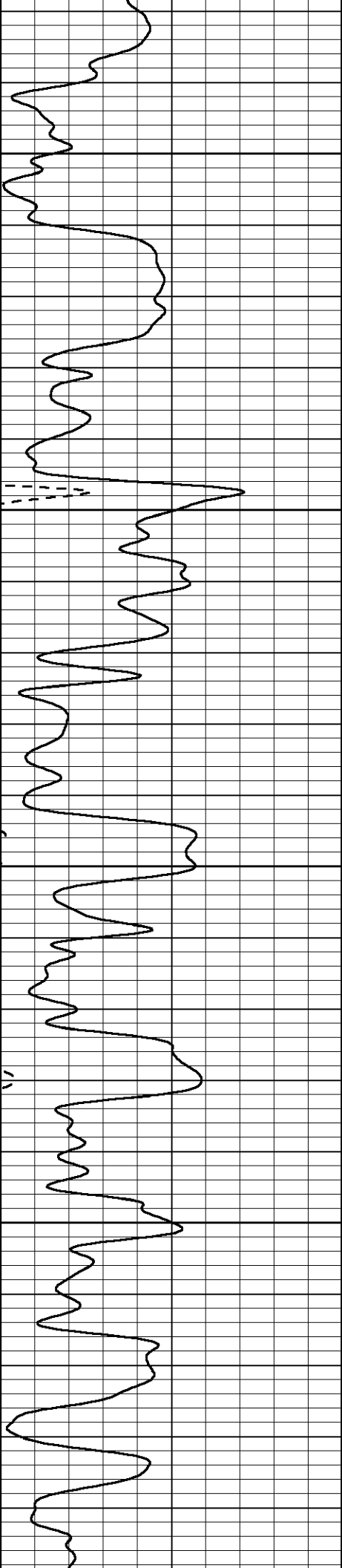
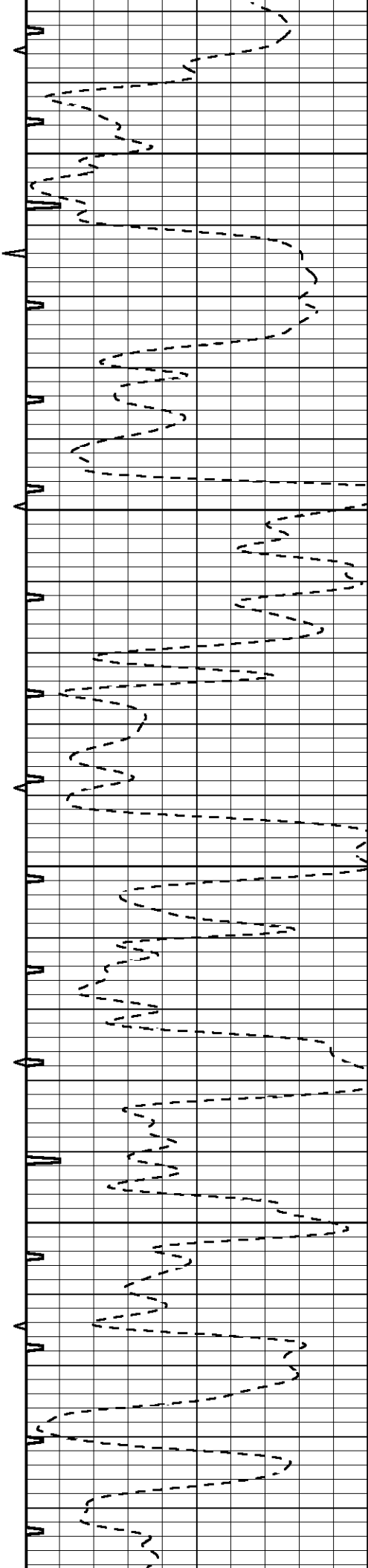


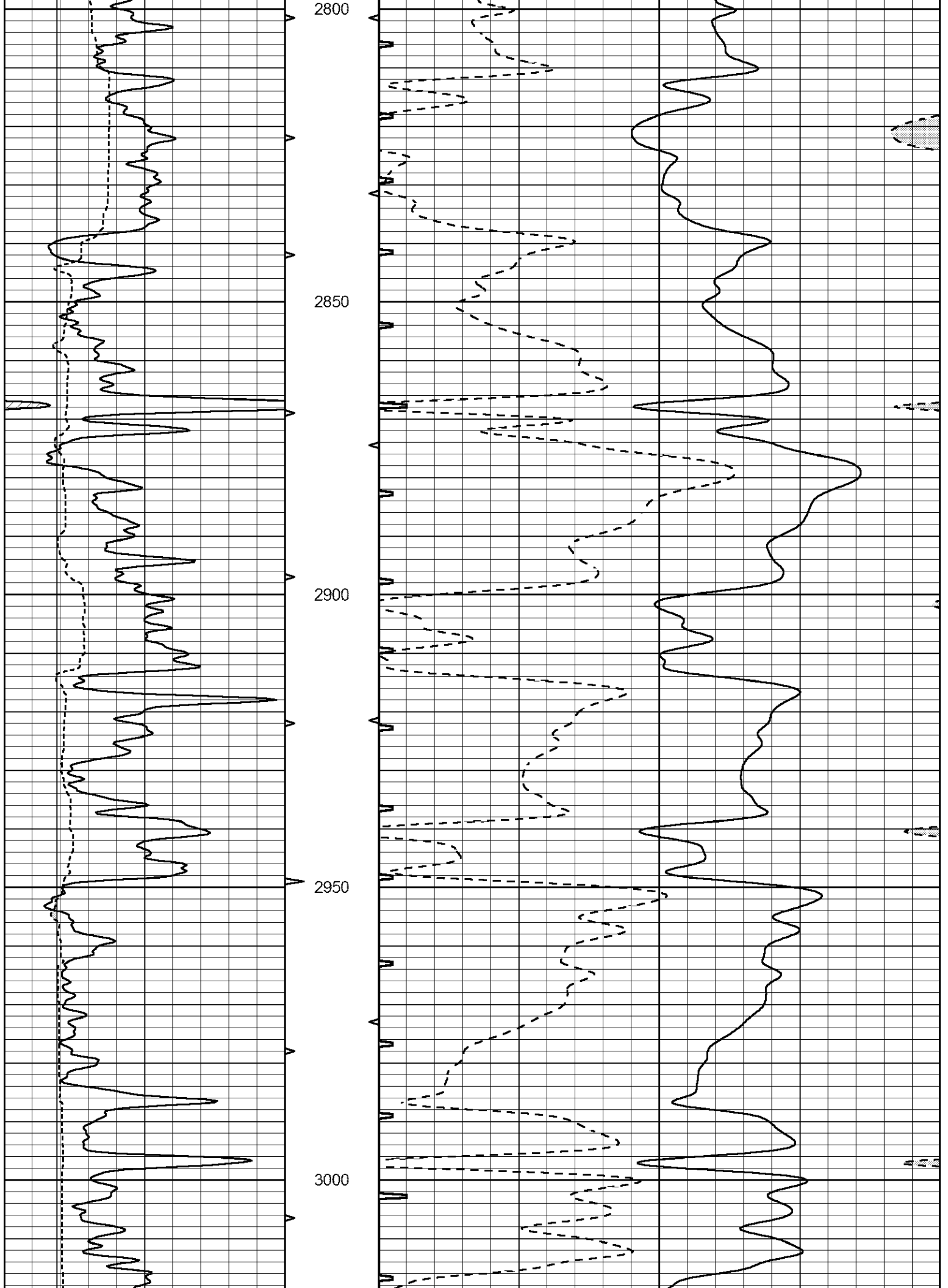
2600

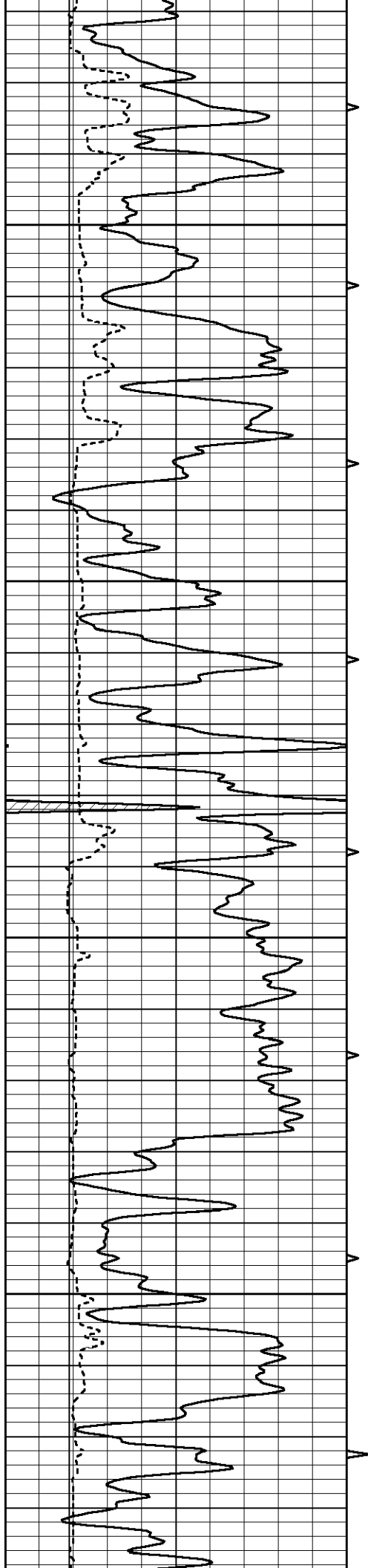
2650

2700

2750





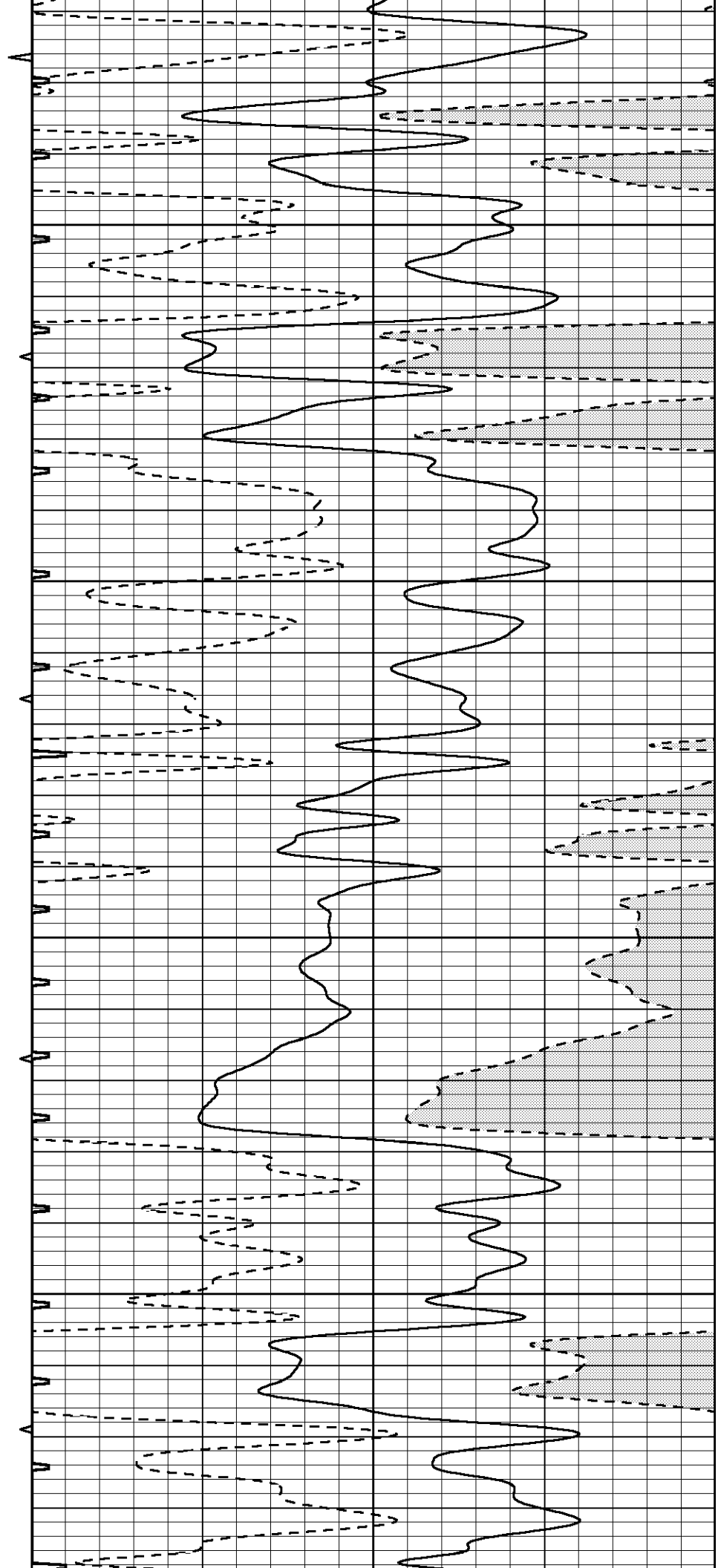


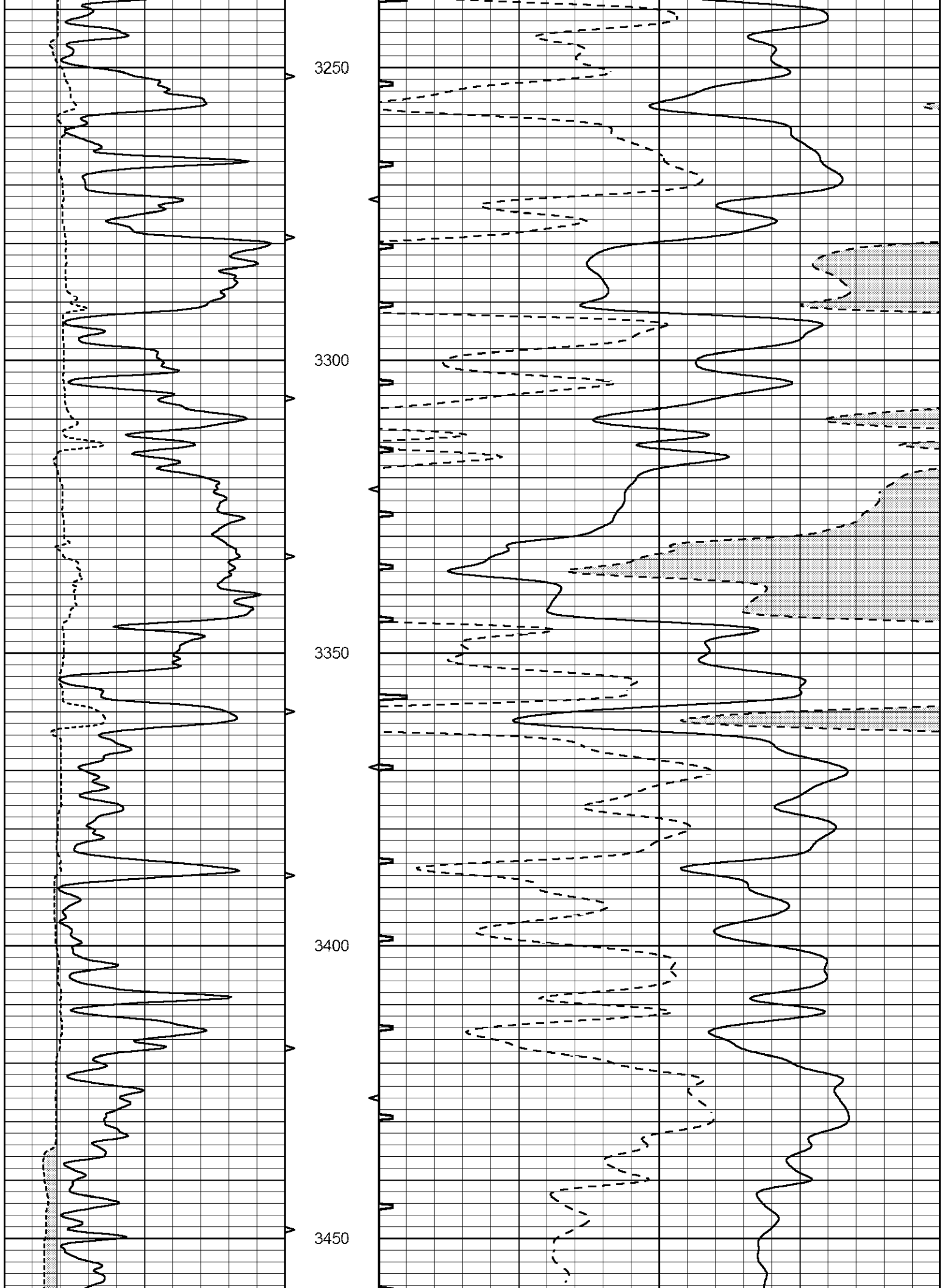
3050

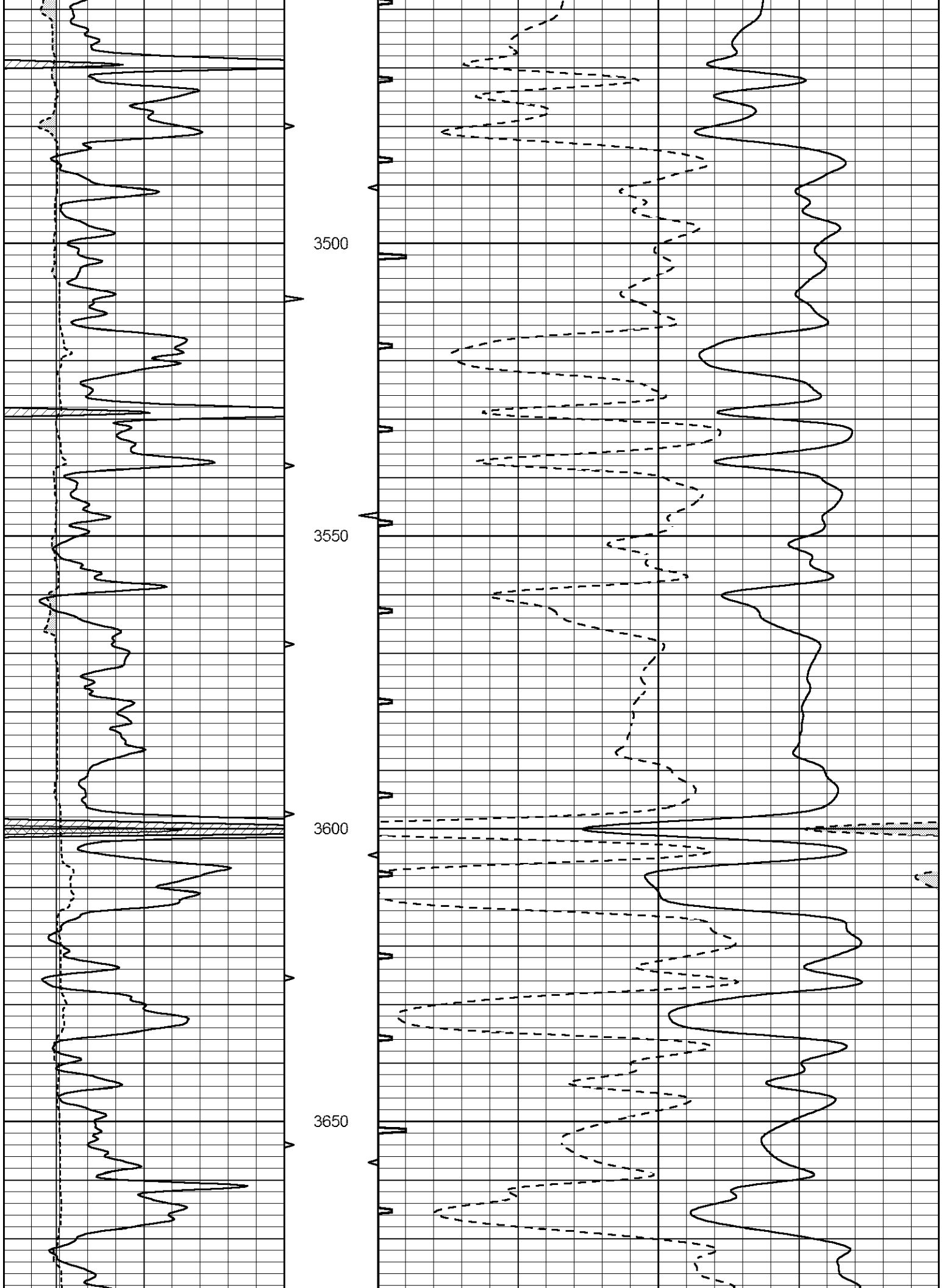
3100

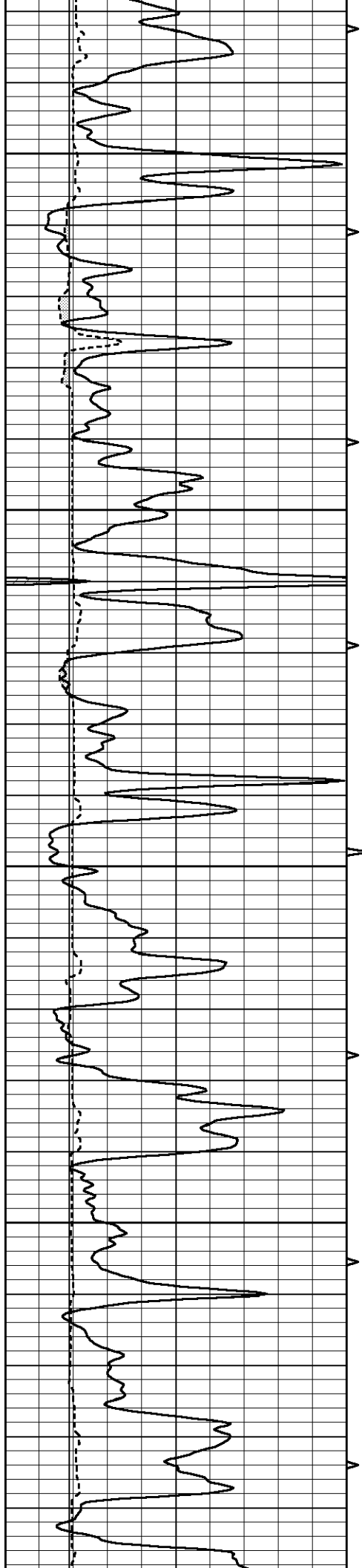
3150

3200







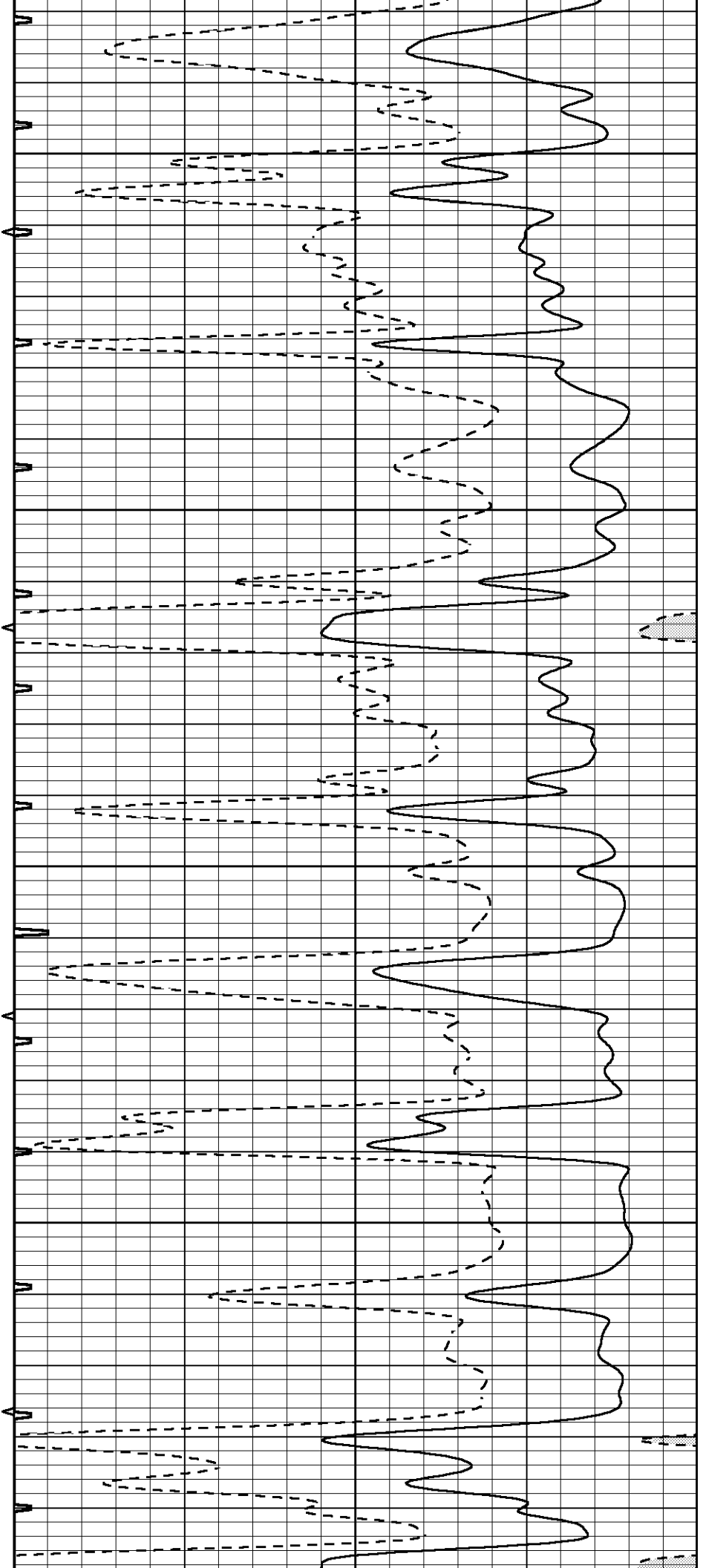


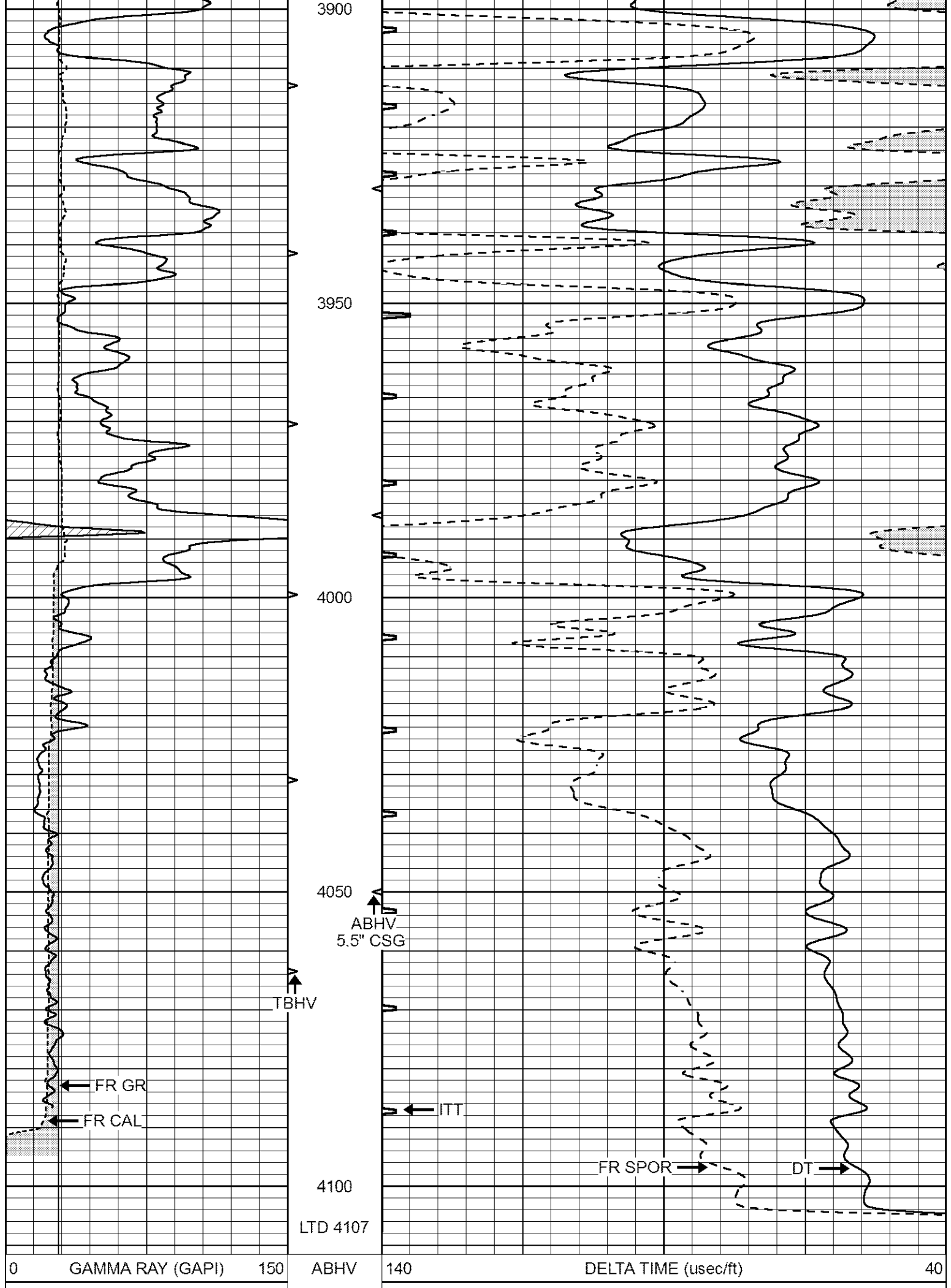
3700

3750

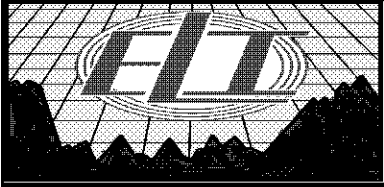
3800

3850





6	CALIPER (in)	16	10 (ft3)	0	30	SONIC POROSITY (pu)	-10
			TBHV	0	ITT (msec)	20	
			0 (ft3)	10			



REPEAT SECTION

Database File 2505ddn8.db
 Dataset Pathname pass5.1
 Presentation Format _slt
 Dataset Creation Fri Jun 08 21:21:58 2018
 Charted by Depth in Feet scaled 1:240

0	GAMMA RAY (GAPI)	150	ABHV	140	DELTA TIME (usec/ft)	40	
6	CALIPER (in)	16	10 (ft3)	0	30	SONIC POROSITY (pu)	-10
			TBHV	0	ITT (msec)	20	
			0 (ft3)	10			

