



MICRO LOG

Company L. D. DRILLING, INC.
Well #1-31 MURPHY
Field WILDCAT
County THOMAS
State KANSAS

Company L. D. DRILLING, INC.
Well #1-31 MURPHY
Field WILDCAT
County THOMAS
State KANSAS

Location: API #: 15-193-21016-0000
1831' FNL & 1826' FEL
SW - NE - SW - NE
Permanent Datum GROUND LEVEL Elevation 3053
Log Measured From KELLY BUSHING 5' A.G.L.
Drilling Measured From KELLY BUSHING
Elevation
K.B. 3058
D.F. 3056
G.L. 3053

Date	5/26/18
Run Number	TWO
Depth Driller	4732
Depth Logger	4732
Bottom Logged Interval	4730
Top Log Interval	3600
Casing Driller	8 5/8"@335'
Casing Logger	336
Bit Size	7 7/8"
Type Fluid in Hole	CHEMICAL MUD
Density / Viscosity	9.3/58
pH / Fluid Loss	10.0/9.6
Source of Sample	FLOWLINE
Rim @ Meas. Temp	.950@90F
Rmf @ Meas. Temp	.713@90F
Rmc @ Meas. Temp	1.14@90F
Source of Rmf / Rmc	MEASUREMENT
Rim @ BHT	.695@123F
Time Circulation Stopped	4.5 HOURS
Time Logger on Bottom	11:15 A.M.
Maximum Recorded Temperature	123F
Equipment Number	922339
Location	HAYS, KANSAS
Recorded By	JEFF LUEBBERS
Witnessed By	KIM SHOEMAKER

<<< Fold Here >>>

All interpretations are opinions based on inferences from electrical or other measurements and we cannot and do not guarantee the accuracy or correctness of any interpretation, and we shall not, except in the case of gross or willful negligence on our part, be liable or responsible for any loss, costs, damages, or expenses incurred or sustained by anyone resulting from any interpretation made by any of our officers, agents or employees. These interpretations are also subject to our general terms and conditions set out in our current Price Schedule.

Comments

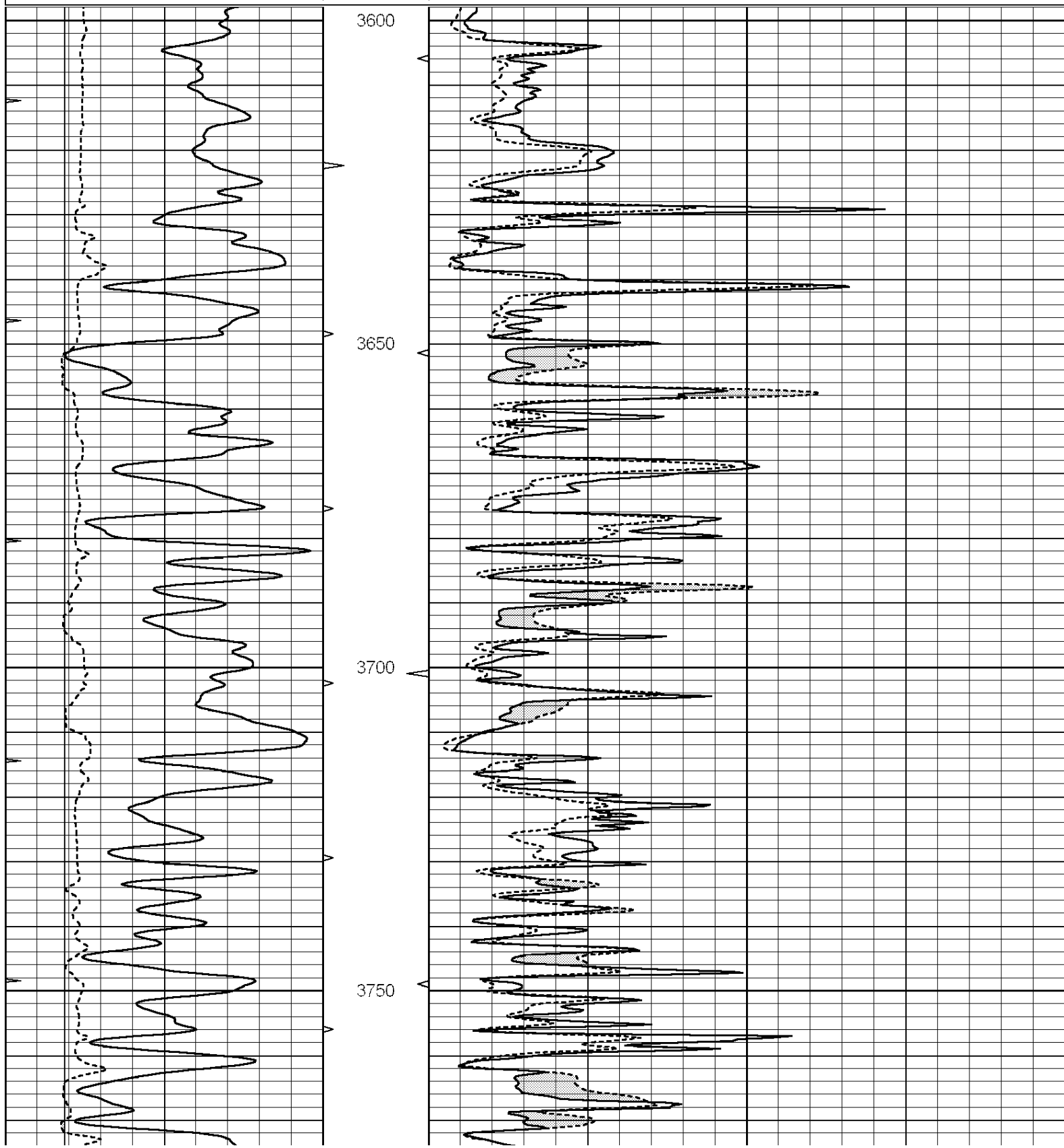
THANK YOU FOR USING ELI WIRELINE HAYS, KANSAS (785) 628-6395
DIRECTIONS
OAKLEY, KS. & 2ND EXIT #70, 8N. ON HWY 83 TO "RD. M", 3E., 3/4N., W. INTO

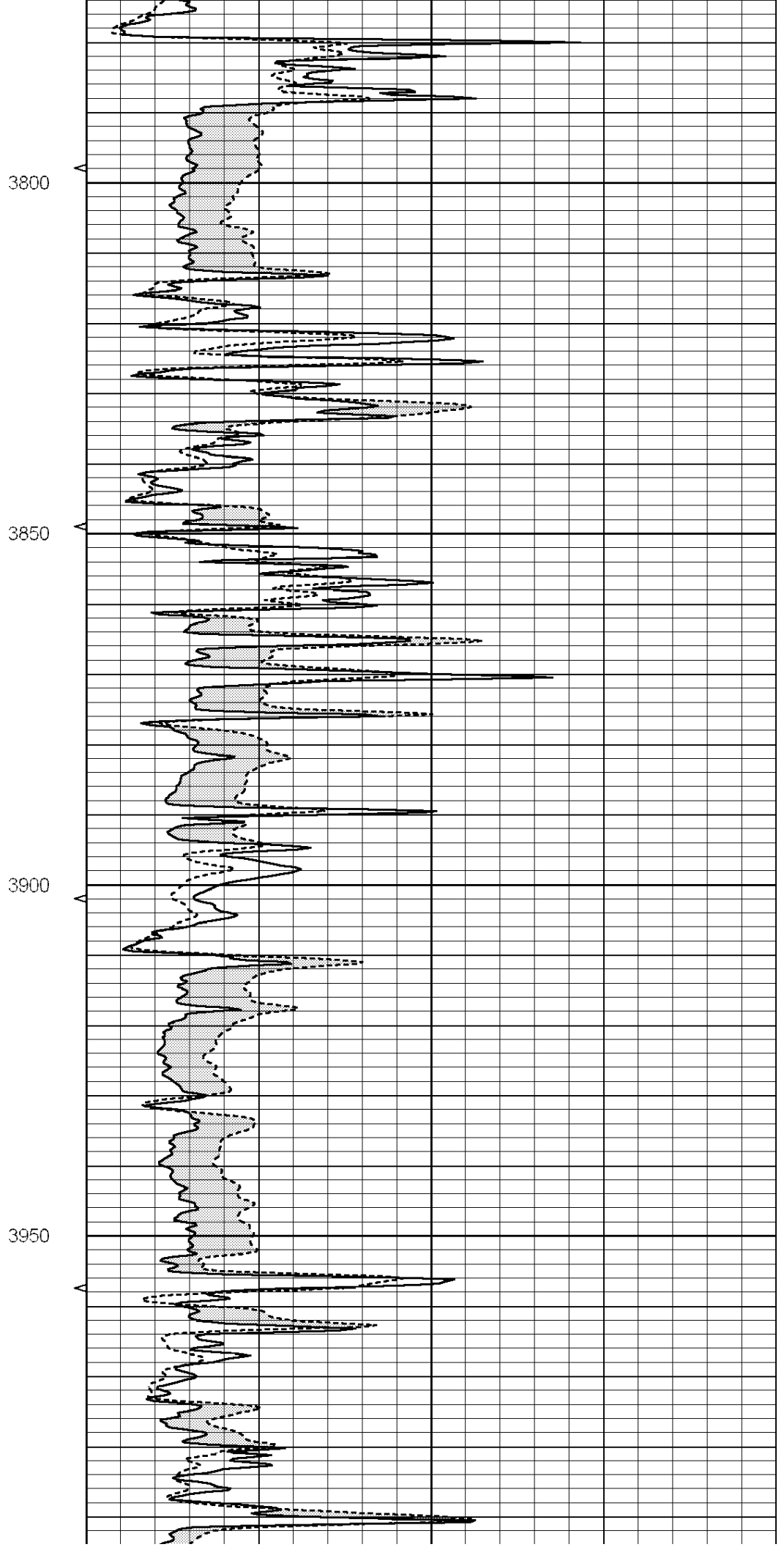
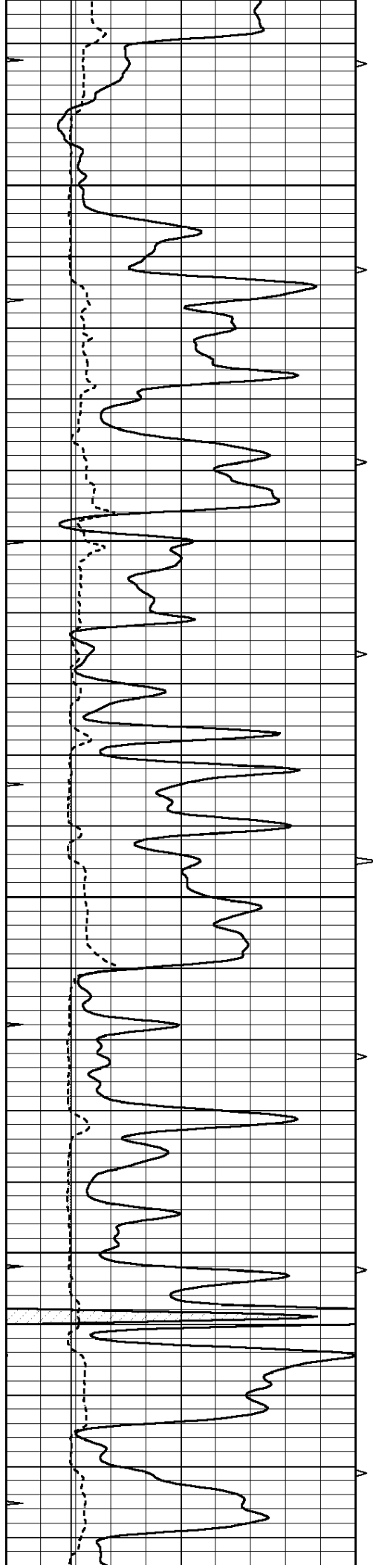


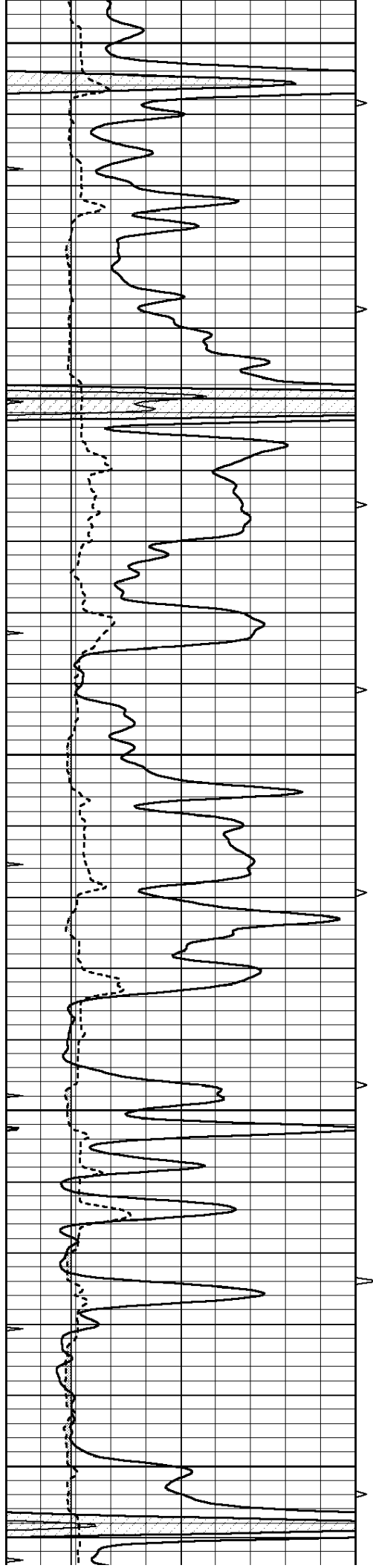
MAIN SECTION

Database File: 2498ddn.db
 Dataset Pathname: pass6.2
 Presentation Format: micro
 Dataset Creation: Sat May 26 12:22:09 2018 by Calc SOC 120430
 Charted by: Depth in Feet scaled 1:240

0	GAMMA RAY (GAPI)	150	ABHV	0	MEL1.5 (Ohm-m)	40
6	CALIPER (in)	16	10 (ft3)	0	MEL 20 (Ohm-m)	40
0	MINMK	20	TBHV			
			0 (ft3)	10		







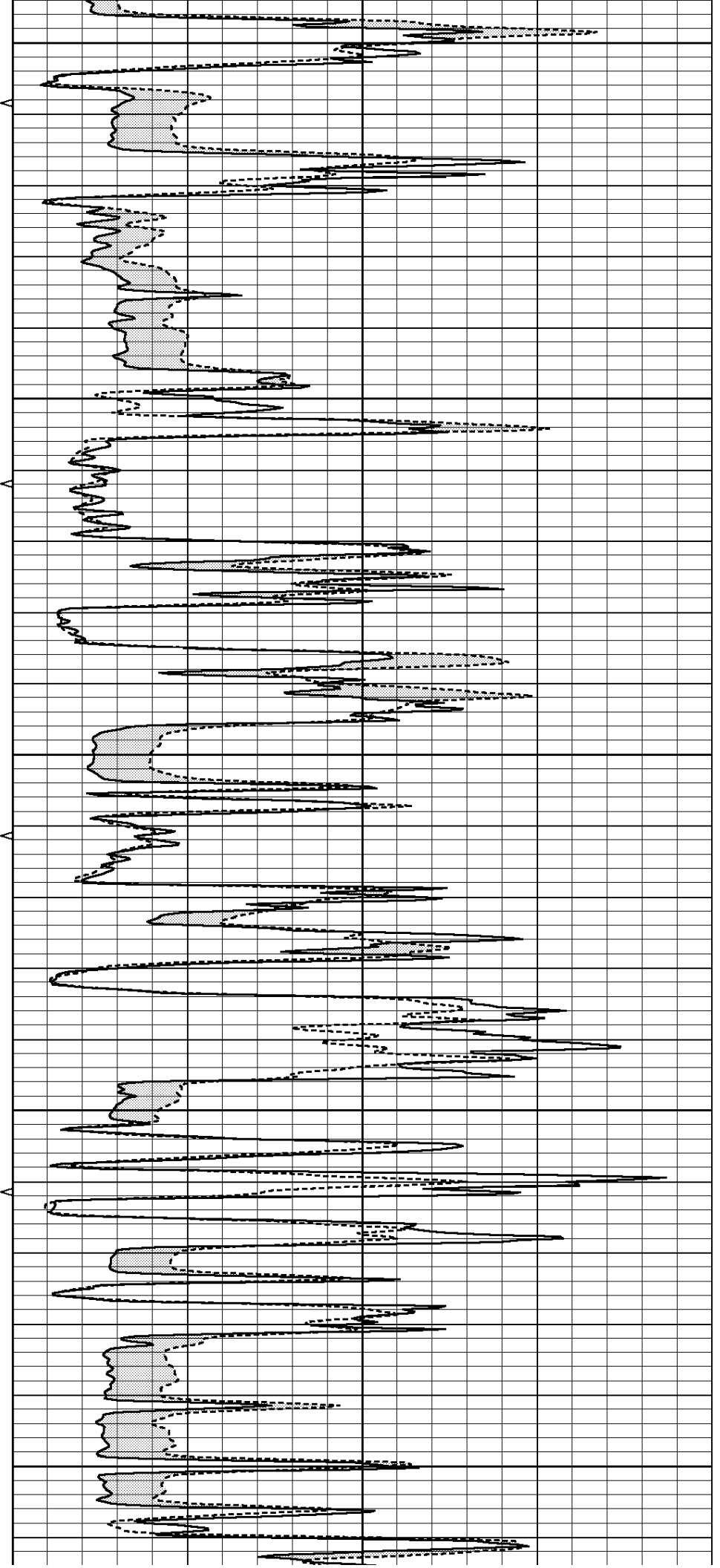
4000

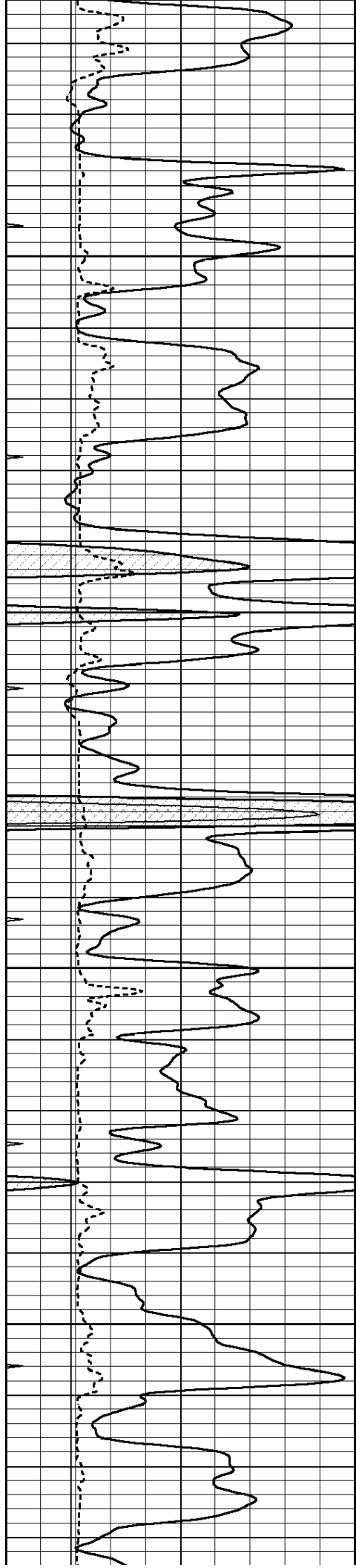
4050

4100

4150

4200



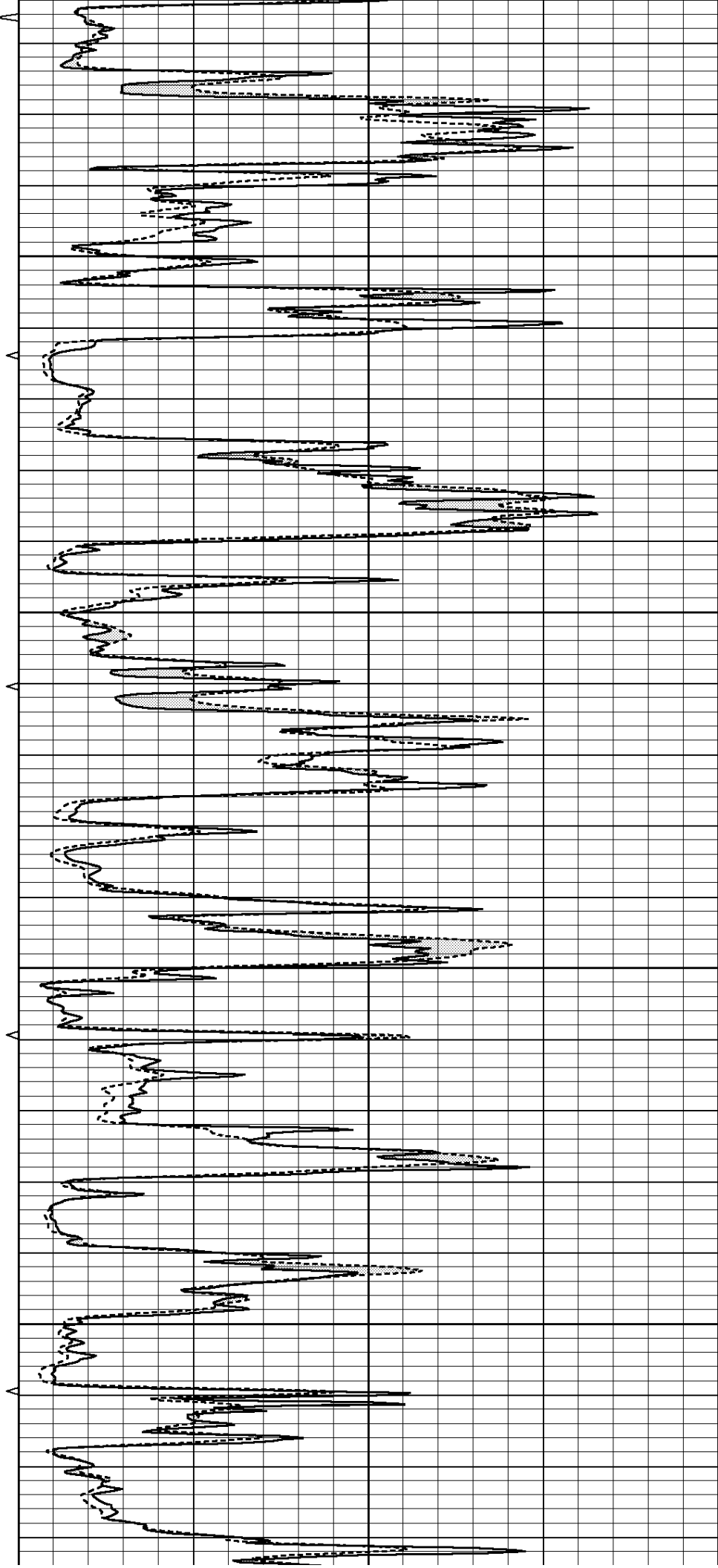


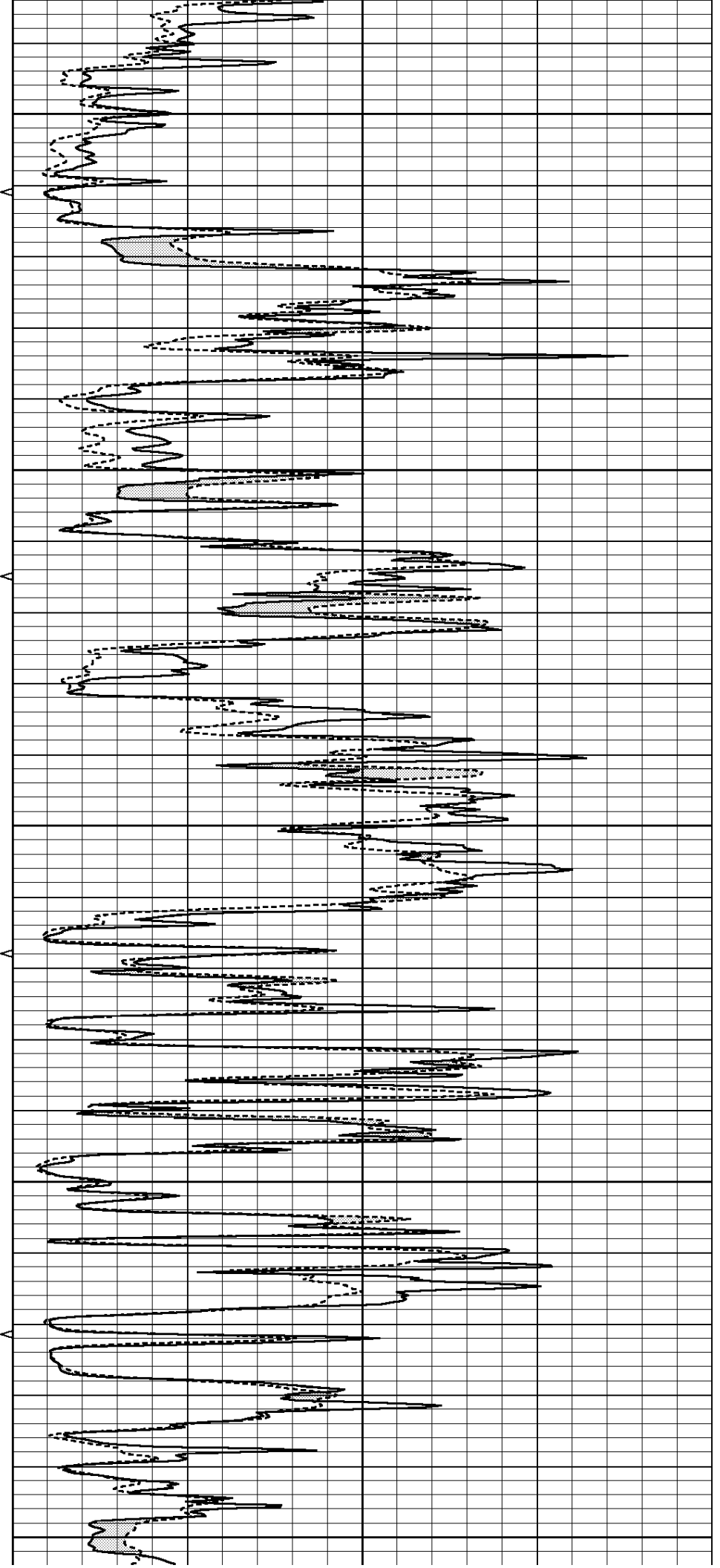
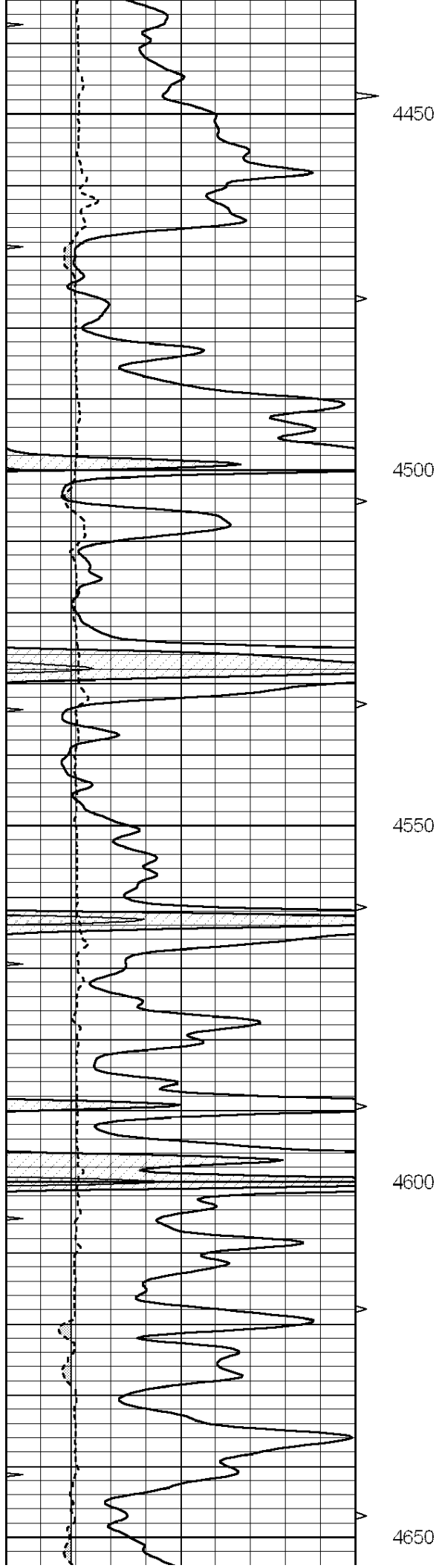
4250

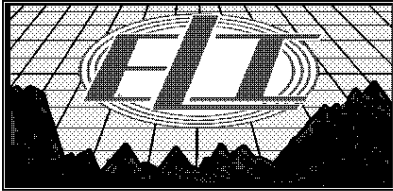
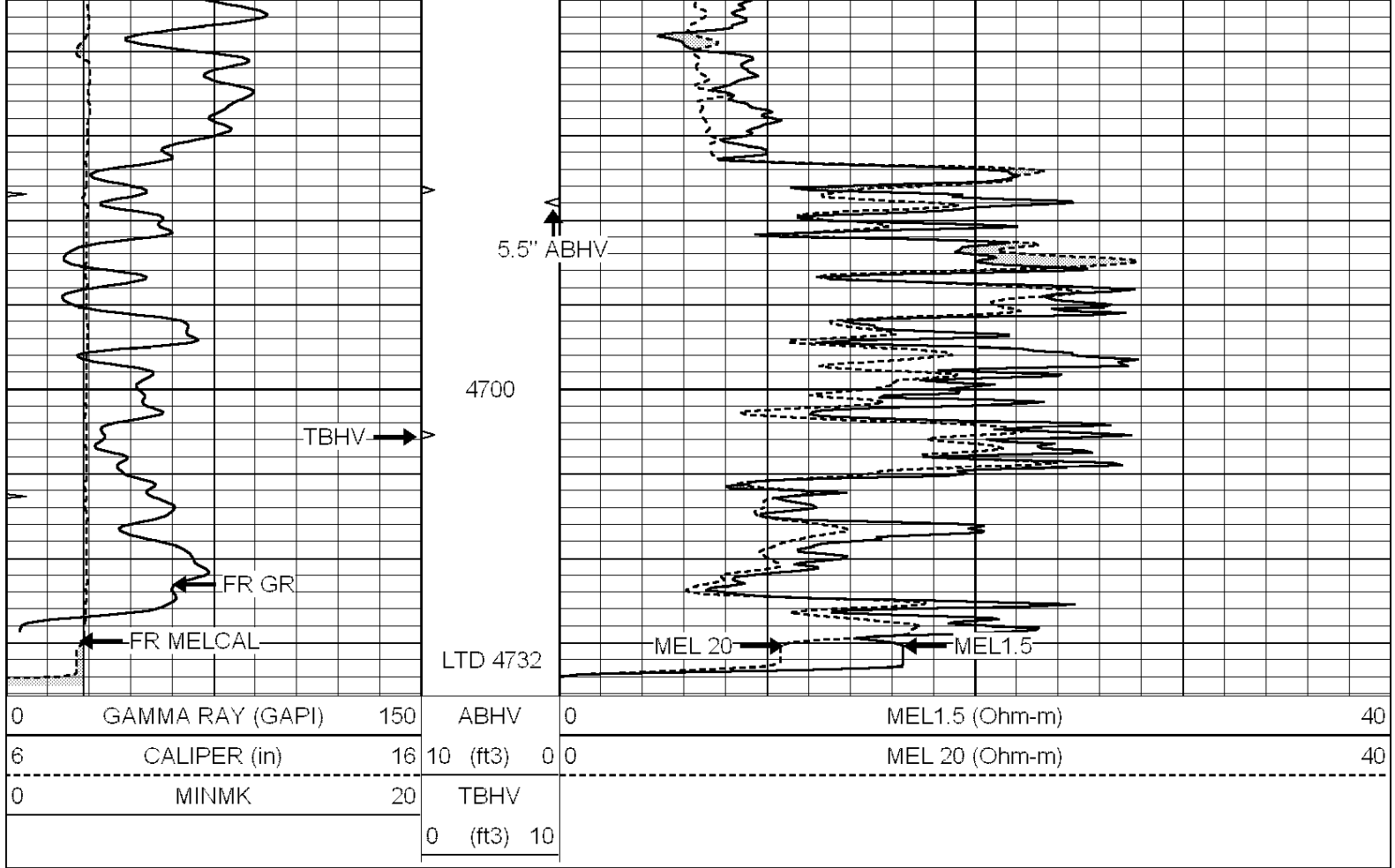
4300

4350

4400



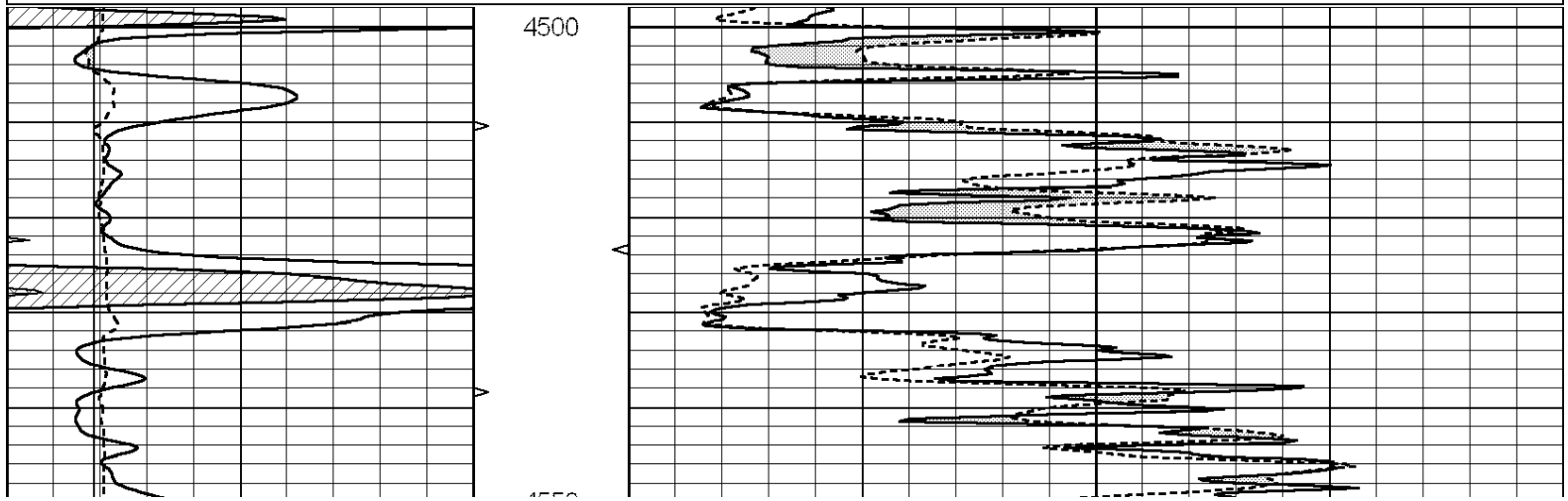


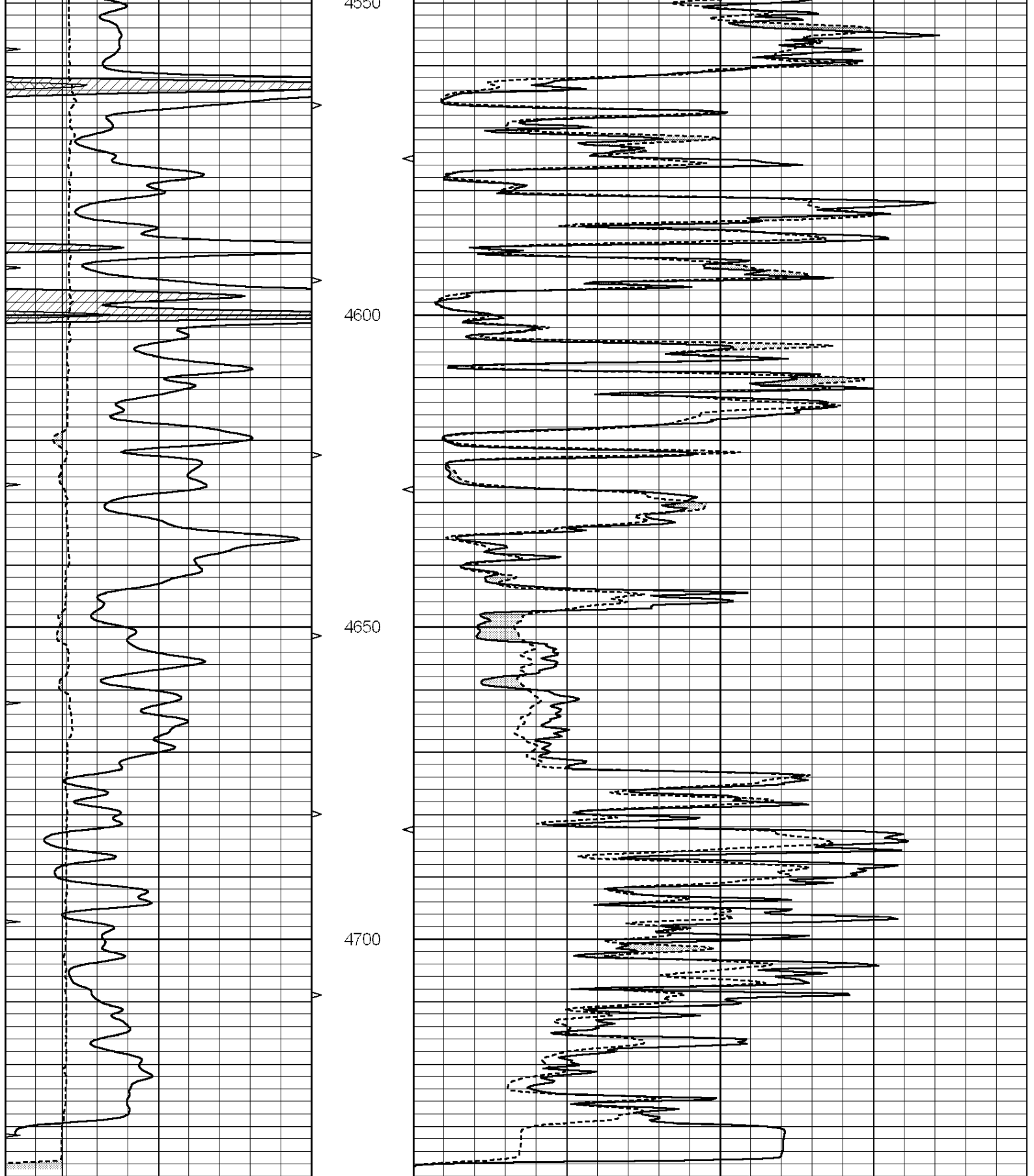


REPEAT SECTION

Database File: 2498ddn.db
 Dataset Pathname: pass5.1
 Presentation Format: micro
 Dataset Creation: Sat May 26 11:39:02 2018 by Calc SOC 120430
 Charted by: Depth in Feet scaled 1:240

0	GAMMA RAY (GAPI)	150	ABHV	0	MEL1.5 (Ohm-m)	40
6	CALIPER (in)	16	10 (ft3)	0 0	MEL 20 (Ohm-m)	40
0	MINMK	20	TBHV			
			0 (ft3)	10		





0	GAMMA RAY (GAPI)	150	ABHV	0	MEL1.5 (Ohm-m)	40
6	CALIPER (in)	16	10 (ft3)	0	MEL 20 (Ohm-m)	40
0	MINMK	20	TBHV			
			0 (ft3)	10		

Database File: 2498ddn.db
Dataset Pathname: pass6.2
Dataset Creation: Sat May 26 12:22:09 2018 by Calc SOC 120430

MICRO Calibration Report

Serial Number: 070912
Tool Model: ProbeN
Performed: Sat May 26 11:49:47 2018

Caliper Calibration: Gain=3.822 Offset=0.646

	Low Cal	High Cal
References	8.100	18.000
Readings	1.950	4.540

1.5" Calibration: Gain=25.000 Offset=0.000

	Low Cal	High Cal
References	0.000	20.000
Readings	0.002	1.239

2" Calibration: Gain=40.000 Offset=-0.700

	Low Cal	High Cal
References	0.000	20.000
Readings	0.003	1.075

Gamma Ray Calibration Report

Serial Number: 070559
Tool Model: OPEN_GR
Performed: Sat May 26 11:32:20 2018

Calibrator Value: 1.0 GAPI

Background Reading:	0.0	cps
Calibrator Reading:	1.0	cps

Sensitivity: 0.2400 GAPI/cps