



# DUAL COMP POROSITY LOG

Company MIKE KELSO OIL, INC.  
 Well WONDER-MUD NO. 14-1  
 Field THISTLE GROVE  
 County NESS  
 State KANSAS

Company MIKE KELSO OIL, INC.  
 Well WONDER-MUD NO. 14-1  
 Field THISTLE GROVE  
 County NESS  
 State KANSAS

Location: API #: 15-135-25910-00-00  
 330' FSL & 1,155' FWL  
 SEC 14 TWP 17S RGE 21W  
 Permanent Datum GROUND LEVEL Elevation 2176'  
 Log Measured From KELLY BUSHING  
 Drilling Measured From KELLY BUSHING  
 Other Services DIL/MEL  
 K.B. 2183'  
 D.F. N/A  
 G.L. 2176'

Date	5/29/2016
Run Number	ONE
Type Log	CNL/CDL
Depth Driller	4234'
Depth Logger	4232'
Bottom Logged Interval	4203'
Top Logged Interval	3300'
Type Fluid In Hole	CHEMICAL
Salinity, PPM CL	8500
Density	9.0
Level	FULL
Max. Rec. Temp. F	118 DEG F.
Operating Rig Time	2 1/2 HOURS
Equipment -- Location	108 COLBY
Recorded By	J. LONG
Witnessed By	PATRICK DEENIHAN

Borehole Record		Casing Record					
Run No.	Bit	From	To	Size	Wgt.	From	To
ONE	12.25"	00'	340'	8.625"	23#	00'	340'
TWO	7.875"	340'	TD				

<<< Fold Here >>>

All interpretations are opinions based on inferences from electrical or other measurements and Pioneer Wireline Services, LLC cannot and does not guarantee the accuracy or correctness of any interpretation, and Pioneer Wireline Services, LLC will not be liable or responsible for any loss, costs, damages, or expenses incurred or sustained by anyone resulting from any interpretation made by any of our officers, agents or employees.

Comments

N/A DENOTES NOT AVAILABLE OR NON-APPLICABLE.

MCCRACKEN, 2 WEST ON ELM STREET (SOUTH SIDE OF TOWN), 1 SOUTH, 7/8 WEST, NORTH INTO

Log Measured From: KELLY BUSHING      7 Ft. Above Permanent Datum

THANK YOU FOR USING PIONEER ENERGY SERVICES  
[www.pioneerenergy.com](http://www.pioneerenergy.com)      785-625-3858

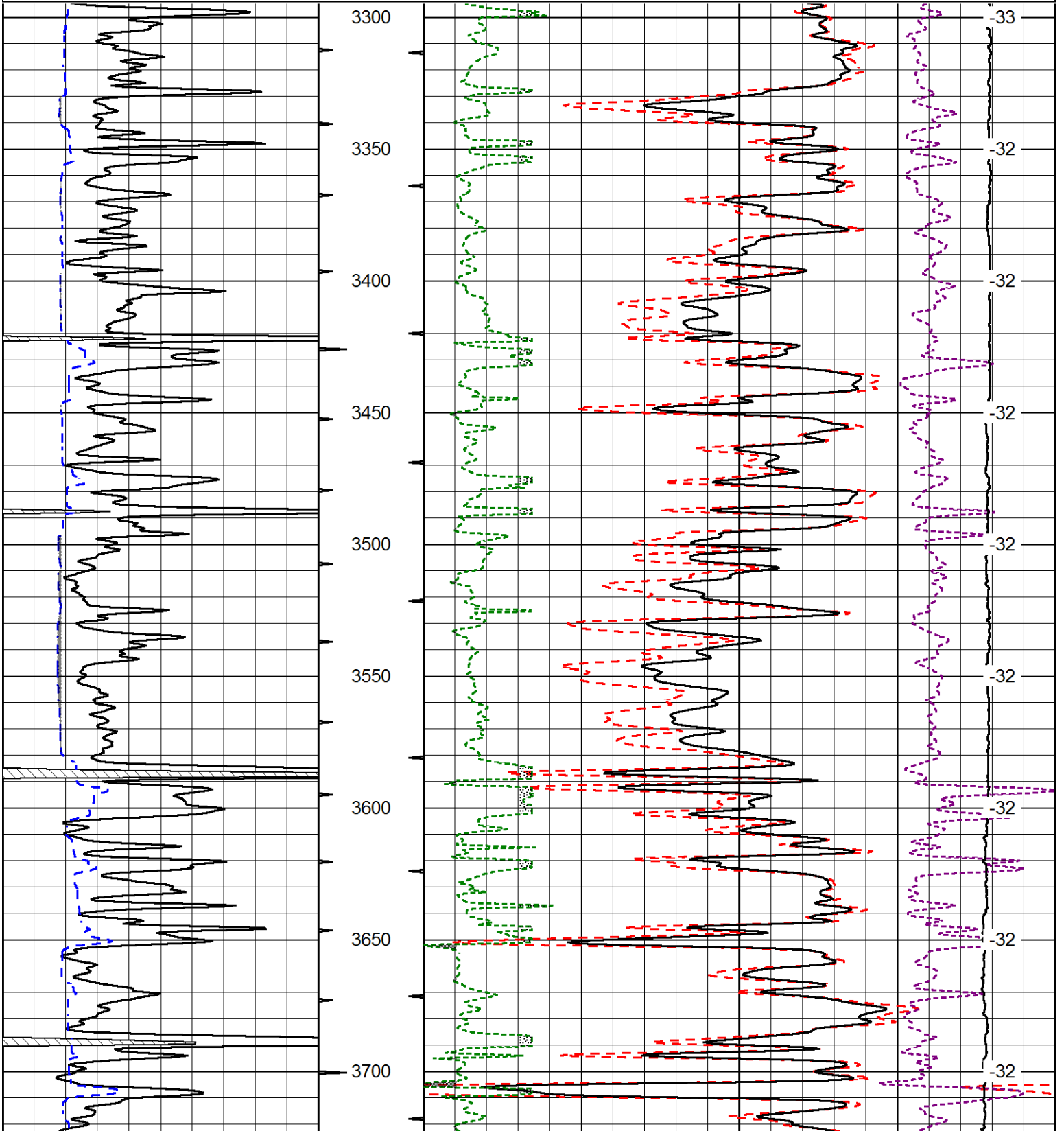
<b>Your Pioneer Energy Services Crew</b> Engineer: J. LONG Operator: Operator: Operator: D. WALKER	<b>This Log Record Was Witnessed By</b> Primary Witness: PATRICK DEENIHAN Secondary Witness: Secondary Witness: Secondary Witness:
--	--

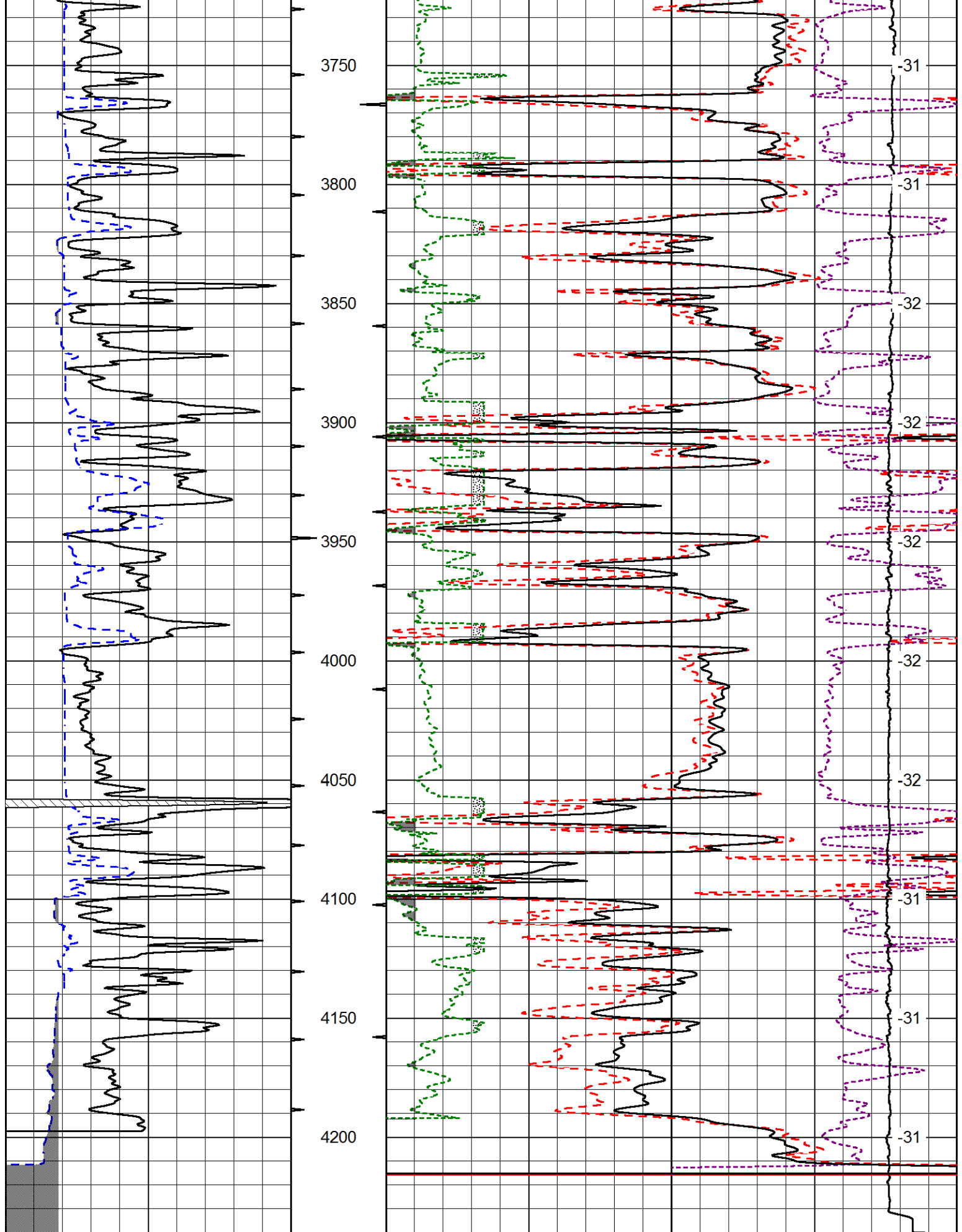
Database File      mikelsooil\_wonder-mud\_14-1hd.db  
 Dataset Pathname    DIL/mkstckml  
 Presentation Format   cdl  
 Dataset Creation    Sun May 29 07:56:21 2016  
 Charted by          Depth in Feet scaled 1:600

0	Gamma Ray (GAPI)	150
6	Caliper (in)	16

30	Compensated Density (pu)		-10
2	Bulk Density (g/cc)		3
15000	Line Tension (lb)		0
2.625	DGA (g/cc)	3.425	-0.25
	Correction (g/cc)		0.25

LSPD  
(ft/min)





0      Gamma Ray (GAPI)      150  
 6      Caliper (in)      16

30      Compensated Density (pu)      -10  
 2      Bulk Density (g/cc)      3  
 15000      Line Tension (lb)      0

2.625	DGA (g/cc)	3.425	-0.25	Correction (g/cc)	0.25
-------	------------	-------	-------	-------------------	------

LSPD  
(ft/min)

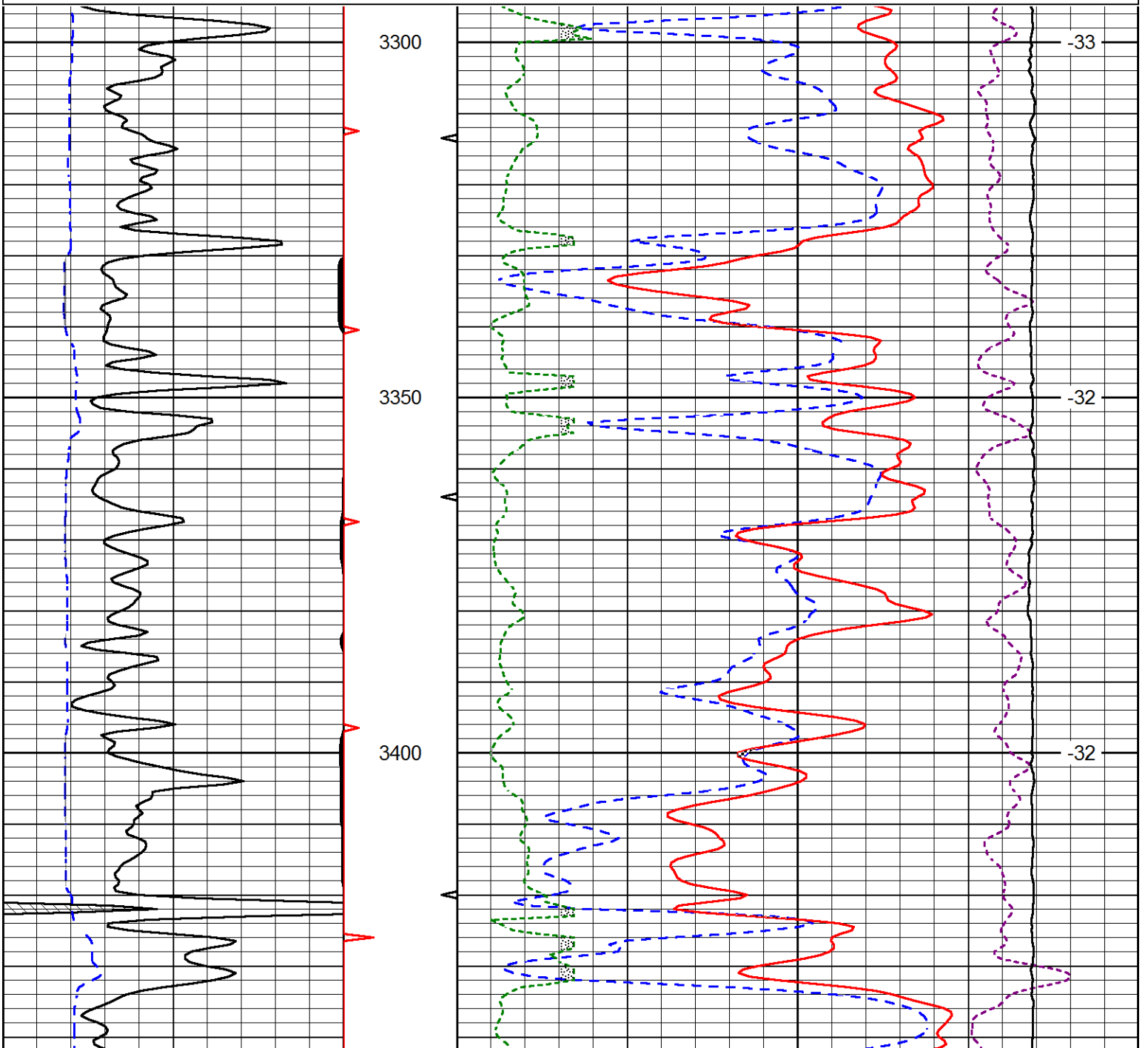
Database File      mikelsooil\_wonder-mud\_14-1hd.db  
 Dataset Pathname    DIL/mkstckml  
 Presentation Format    cndlspec  
 Dataset Creation      Sun May 29 07:56:21 2016  
 Charted by            Depth in Feet scaled 1:240

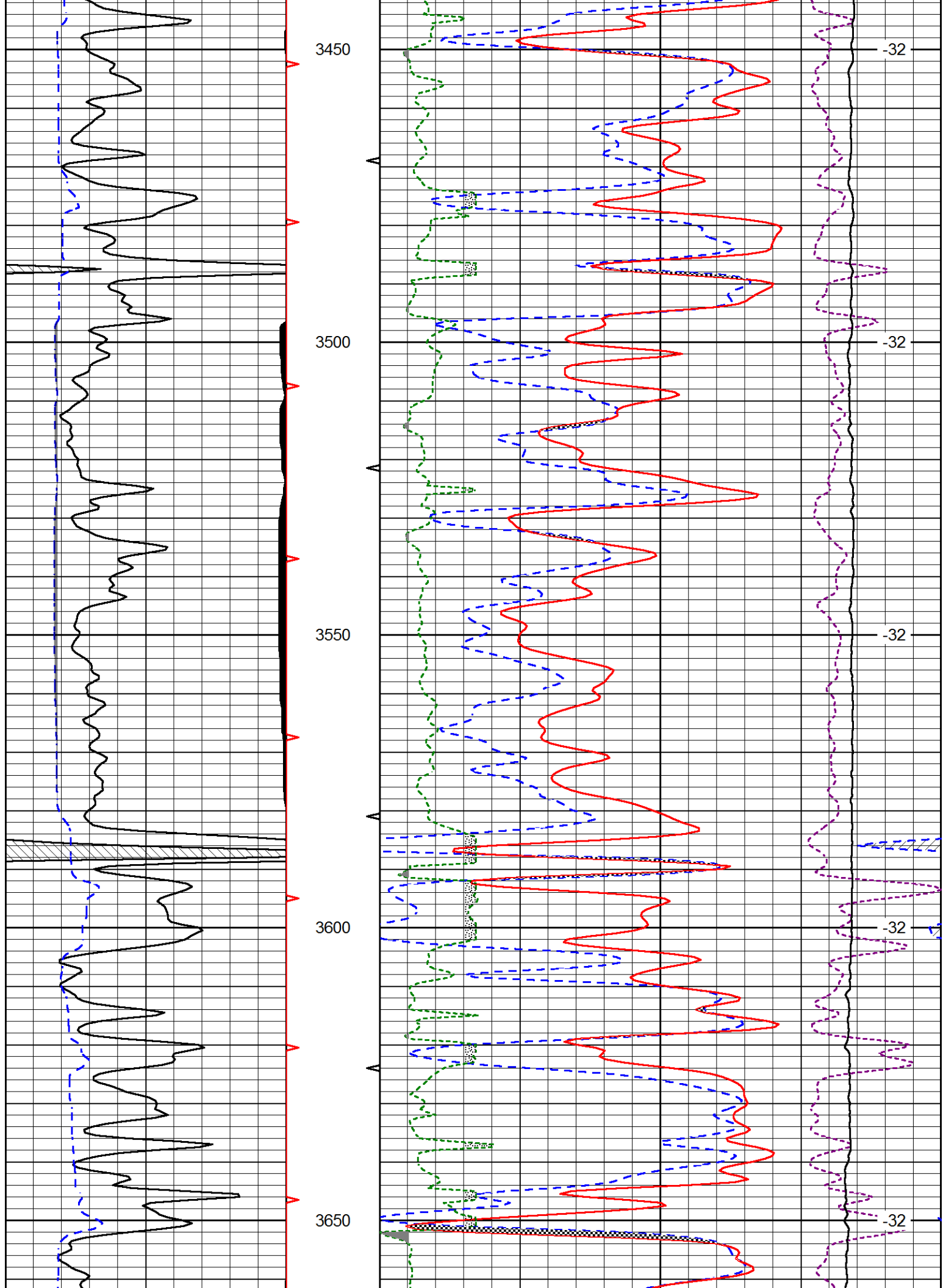
0	Gamma Ray (GAPI)	150
6	Caliper (in)	16

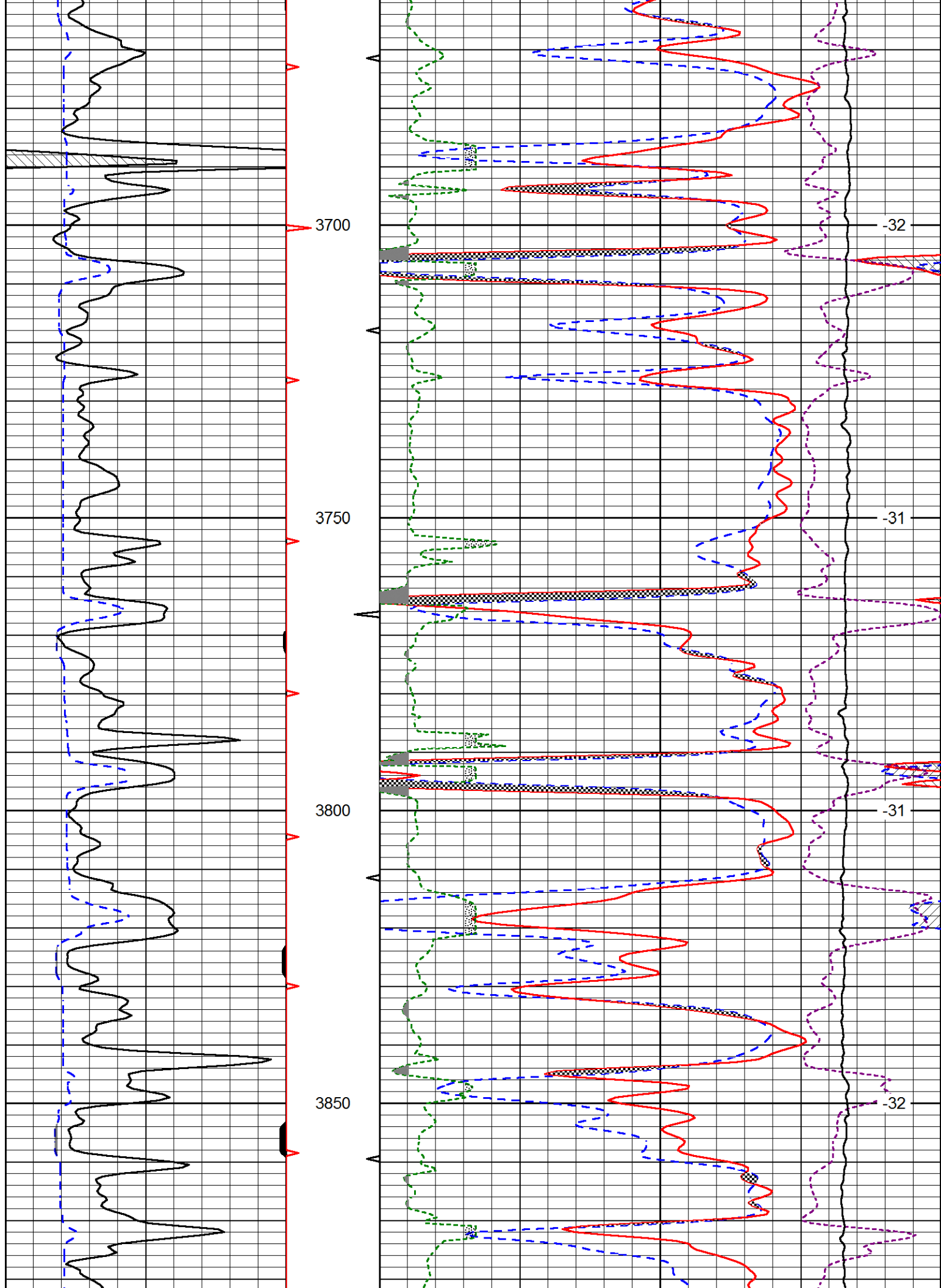
30	CNLS (pu)	-10
30	Compensated Density (2.71 ma) (pu)	-10
10000	Line Tension (lb)	0

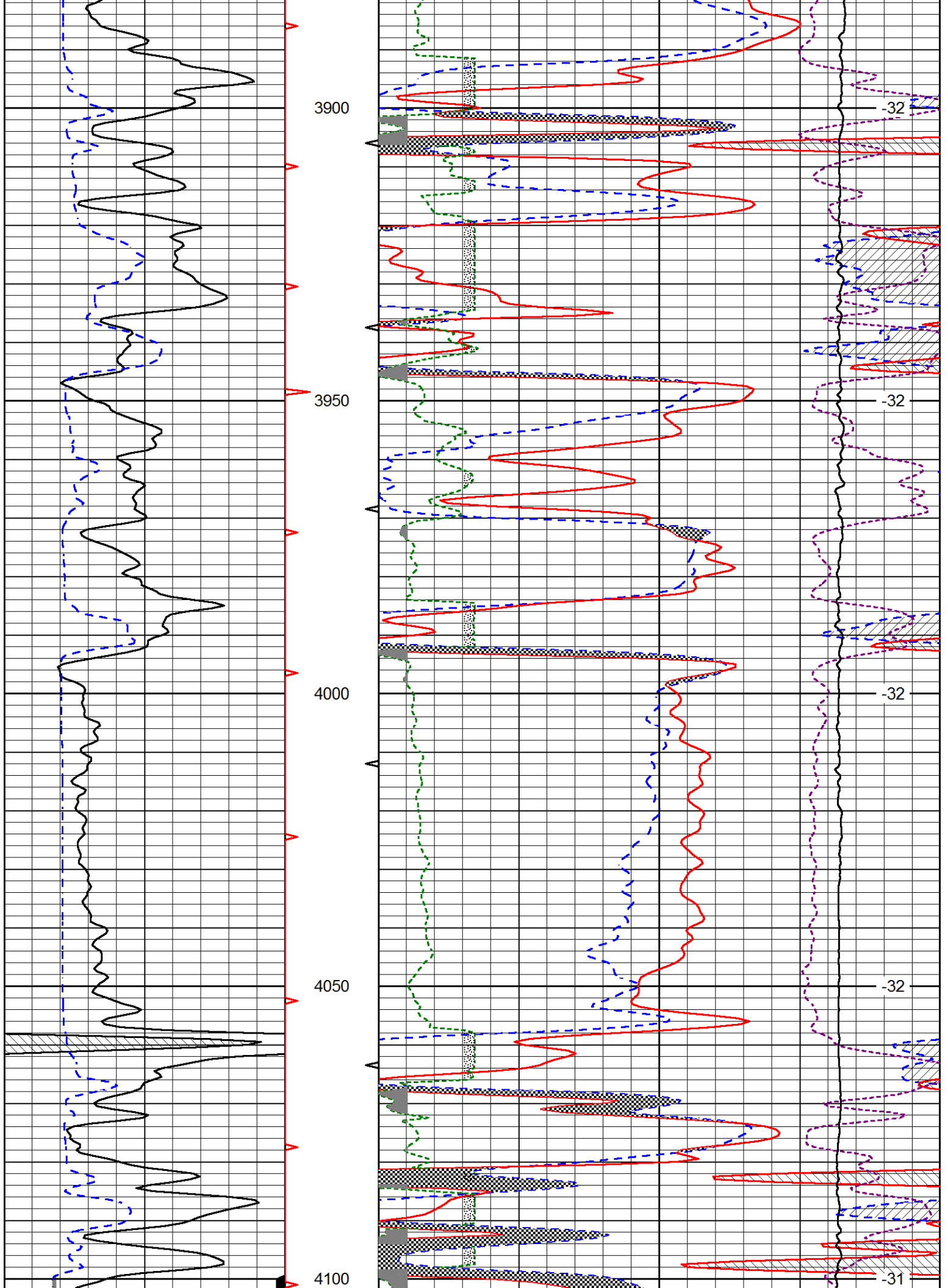
2.625	DGA (g/cc)	3.425	-0.25	Correction (g/cc)	0.25
-------	------------	-------	-------	-------------------	------

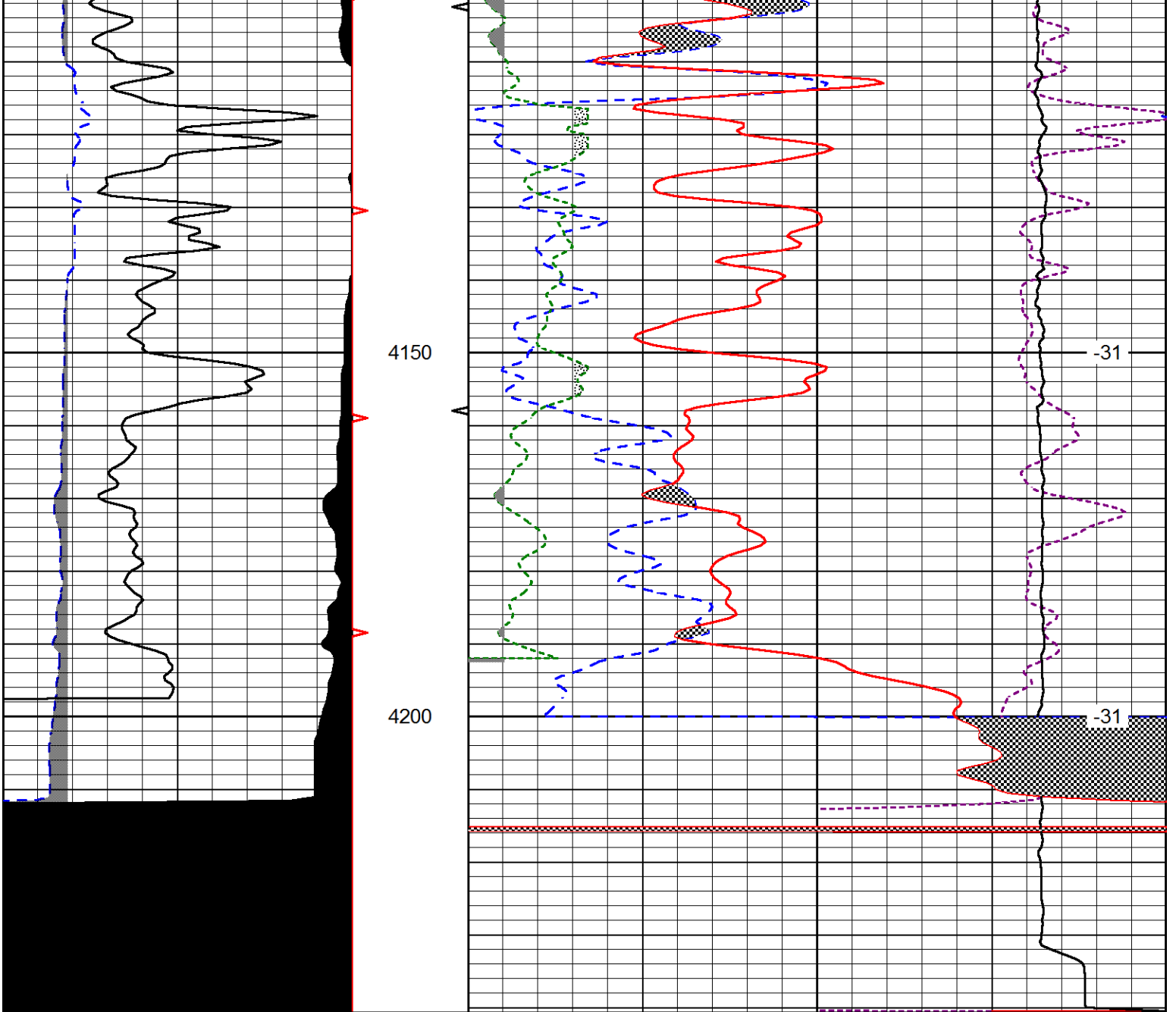
LSPD  
(ft/min)











0	Gamma Ray (GAPI)	150
6	Caliper (in)	16

30	CNLS (pu)			-10	
30	Compensated Density (2.71 ma) (pu)			-10	
10000	Line Tension (lb)			0	
2.625	DGA (g/cc)	3.425	-0.25	Correction (g/cc)	0.25

LSPD  
(ft/min)