



DUAL INDUCTION LOG

Company TDI, INC.
Well LYNETTE #1
Field UNNAMED
County ELLIS **State** KANSAS

Company TDI, INC.
Well LYNETTE #1
Field UNNAMED
County ELLIS
State KANSAS

Location: API #: 15-051-26823-00-00
 330' FNL & 1550' FEL
 SEC 6 TWP 12S RGE 18W
 Permanent Datum GROUND LEVEL Elevation 2135'
 Log Measured From KELLY BUSHING
 Drilling Measured From KELLY BUSHING

Other Services
 CNL/CDL
 MEL
 Elevation
 K.B. 2143'
 D.F. N/A
 G.L. 2135'

Date	4/13/2016
Run Number	ONE
Depth Driller	3800'
Depth Logger	3798'
Bottom Logged Interval	3797'
Top Log Interval	200'
Casing Driller	8.625" @ 220'
Casing Logger	223'
Bit Size	7.875"
Type Fluid in Hole	CHEMICAL
Salinity, ppm CL	5300
Density / Viscosity	9.2 55
pH / Fluid Loss	10.5 8.0
Source of Sample	FLOWLINE
Rm @ Meas. Temp	0.60 @ 50
Rmt @ Meas. Temp	0.45 @ 50
Rmc @ Meas. Temp	0.81 @ 50
Source of Rmf / Rmc	CHARTS
Rm @ BHT	0.26 @ 114
Operating Rig Time	4 HOURS
Max Rec. Temp. F	114
Equipment Number	91
Location	COLBY
Recorded By	D. SCHMIDT
Witnessed By	TOM DENNING

<<< Fold Here >>>

All interpretations are opinions based on inferences from electrical or other measurements and Pioneer Wireline Services, LLC cannot and does not guarantee the accuracy or correctness of any interpretation, and Pioneer Wireline Services, LLC will not be liable or responsible for any loss, costs, damages, or expenses incurred or sustained by anyone resulting from any interpretation made by any of our officers, agents or employees.

Comments

N/A DENOTES NOT AVAILABLE OR NON-APPLICABLE.

HAYS,
NORTH ON 230 AVE TO HOMESTEAD RD,
1/2 WEST, SOUTH INTO

Log Measured From: KELLY BUSHING 8 Ft. Above Permanent Datum

THANK YOU FOR USING PIONEER ENERGY SERVICES
www.pioneerenergy.com 785-625-3858

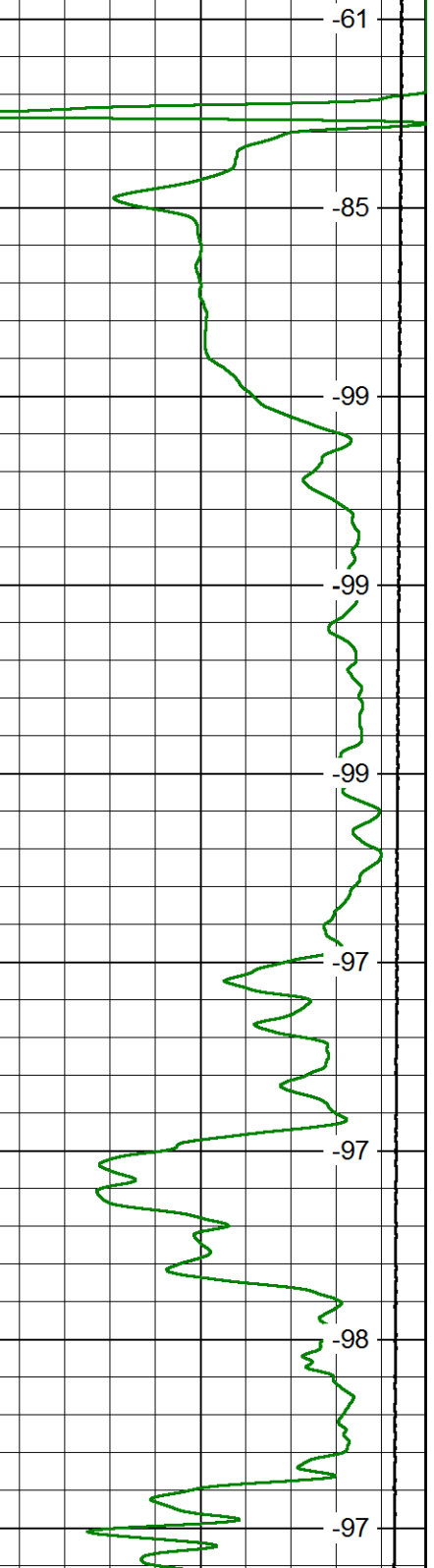
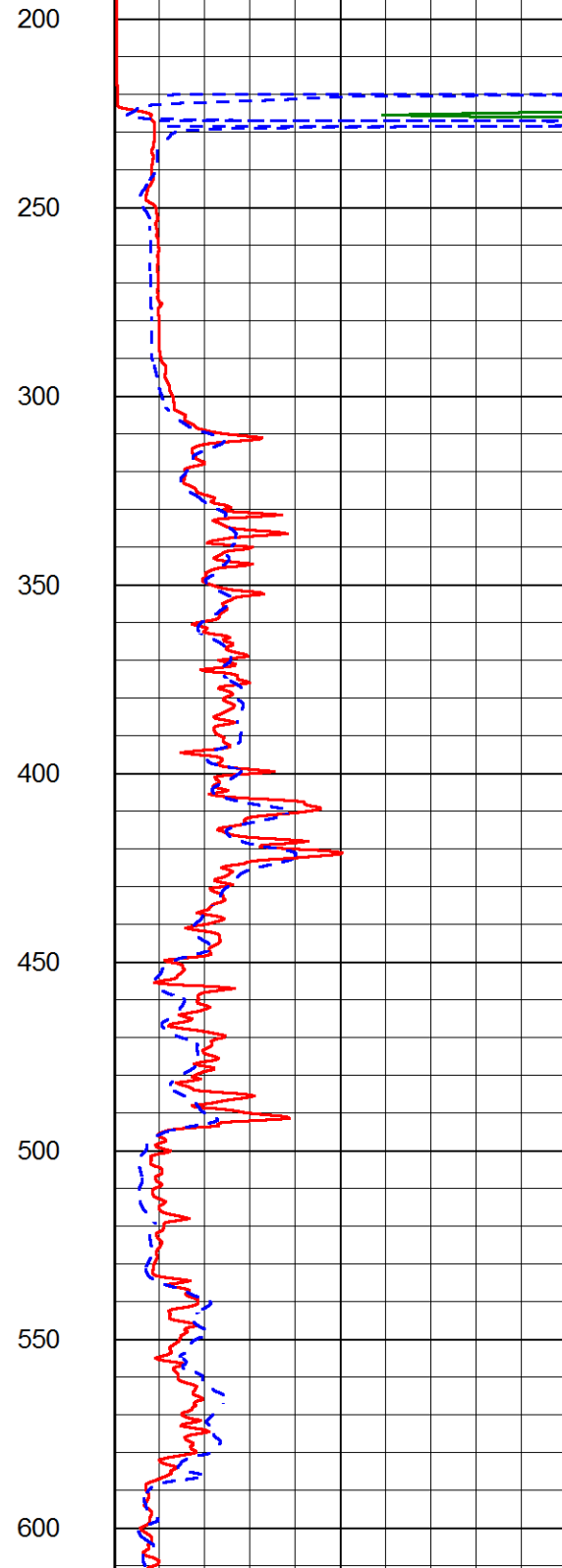
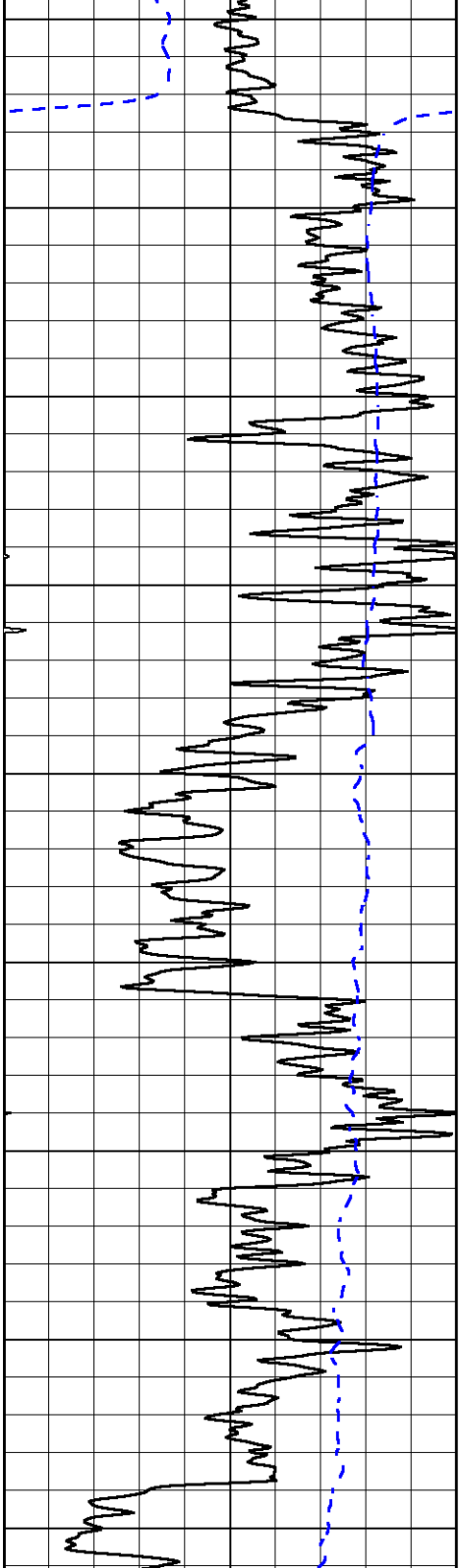
Your Pioneer Energy Services Crew Engineer: D. SCHMIDT Operator: Operator: Operator:	This Log Record Was Witnessed By Primary Witness: TOM DENNING Secondary Witness: HERB DEINES Secondary Witness: Secondary Witness:
---	---

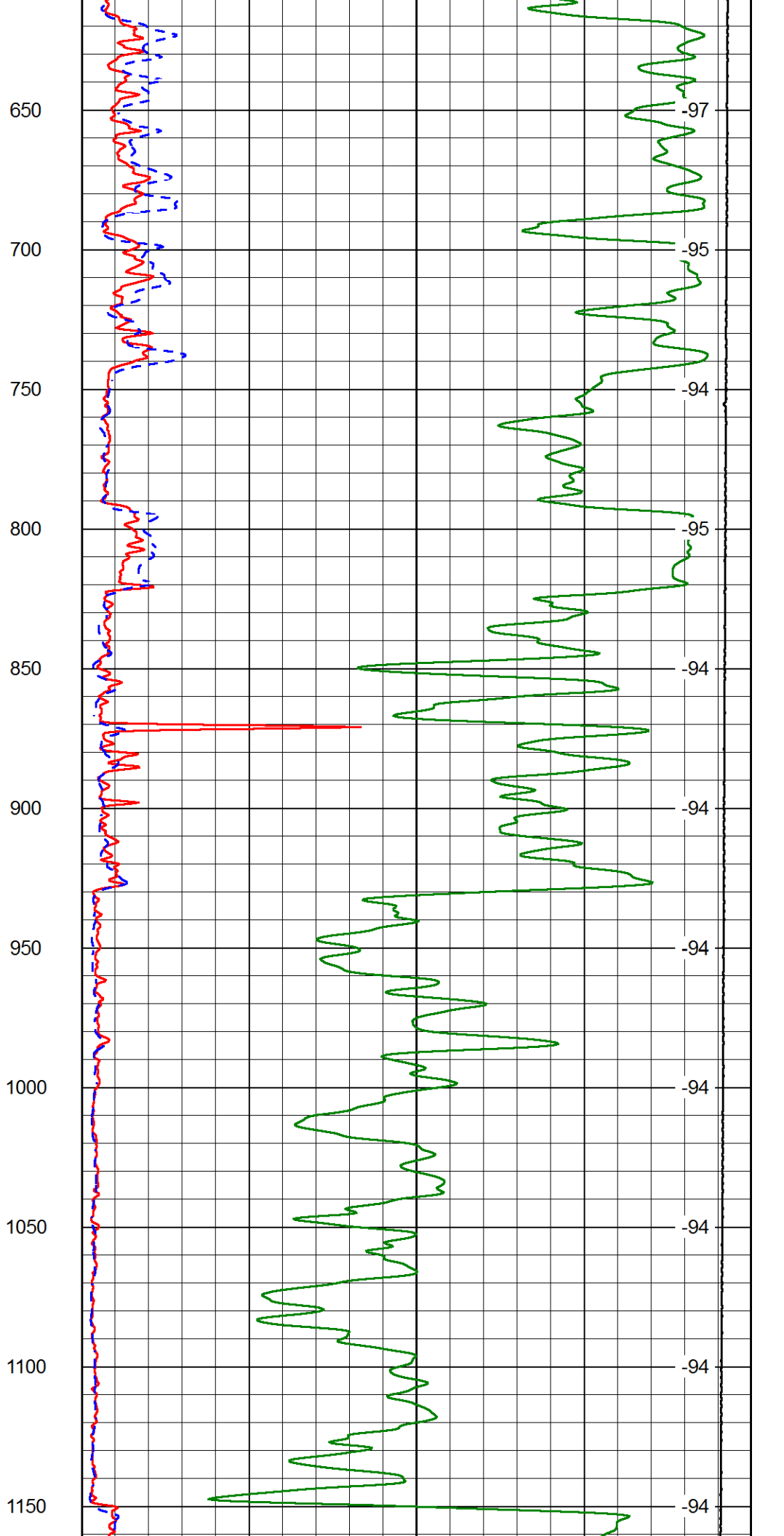
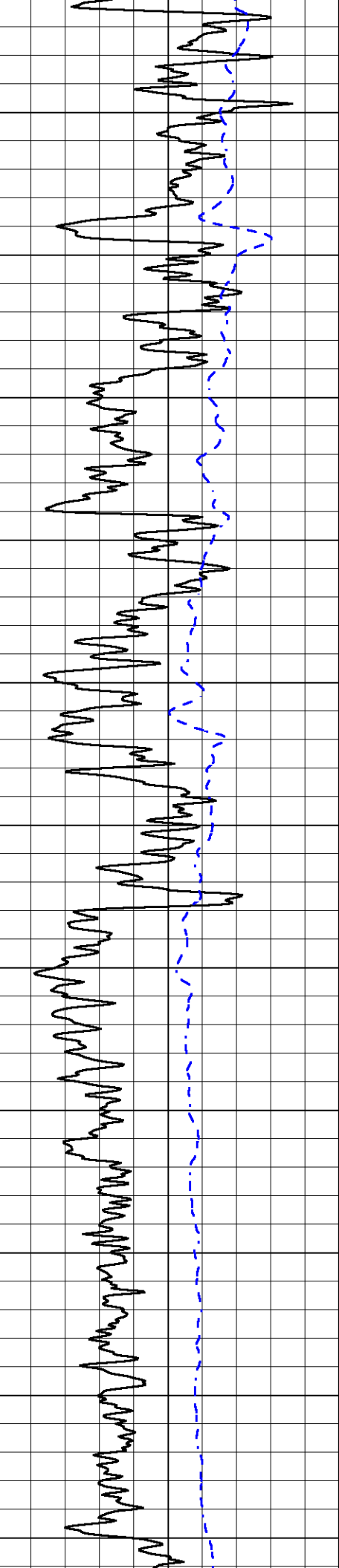
Database File tdi_lynnette_1hd.db
 Dataset Pathname DIL/tdstack
 Presentation Format dil2in
 Dataset Creation Wed Apr 13 08:31:26 2016
 Charted by Depth in Feet scaled 1:600

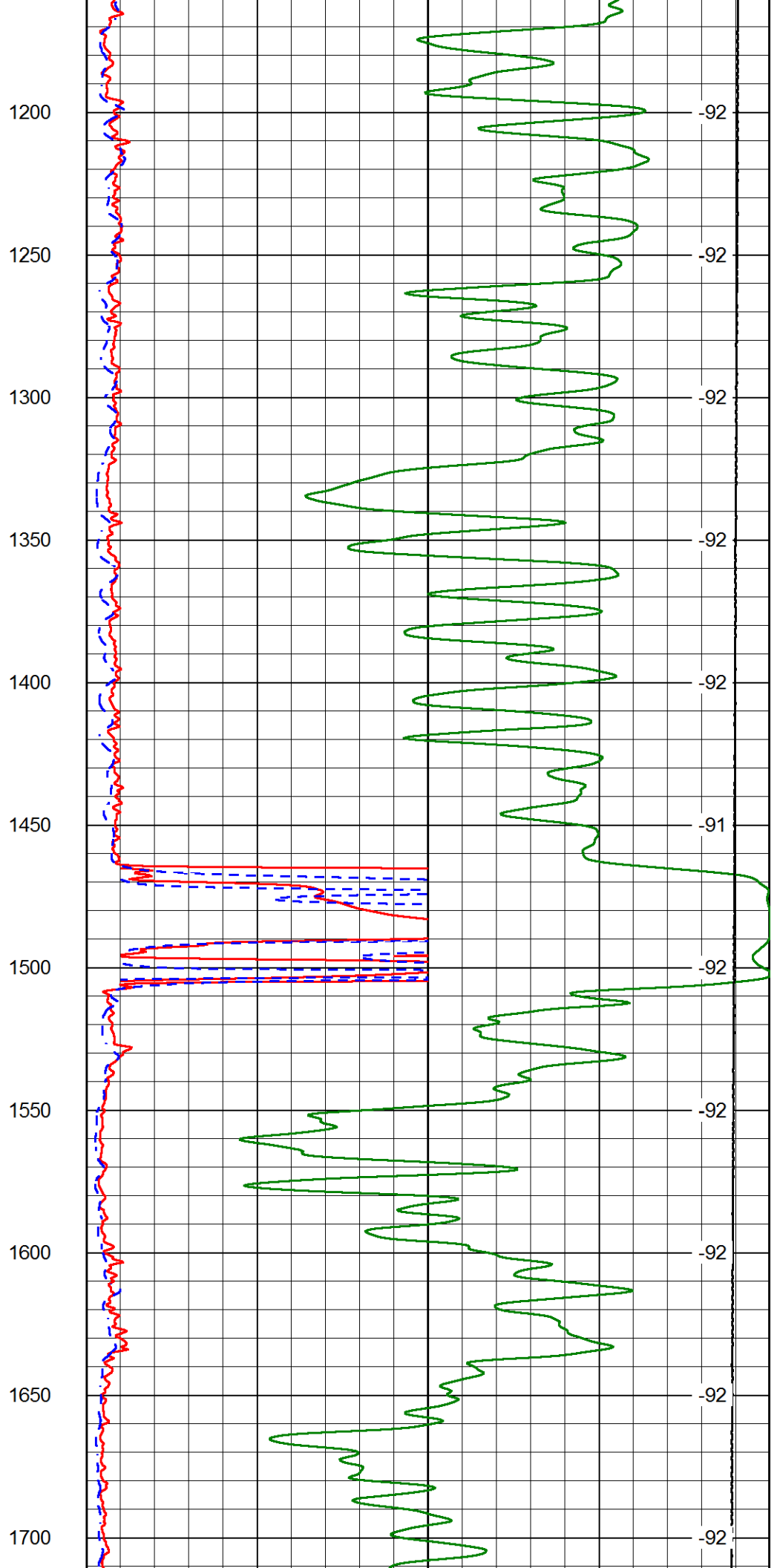
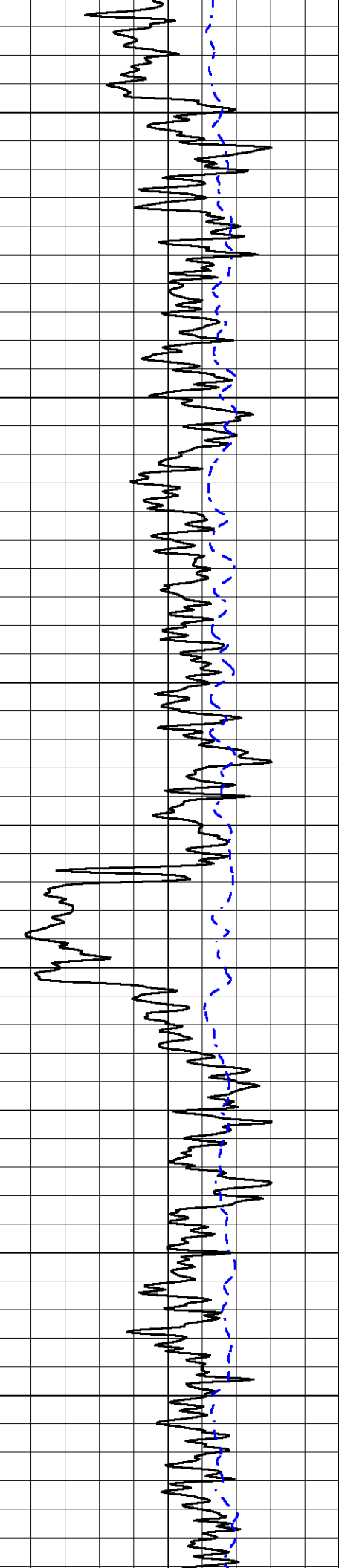
0 Gamma Ray (GAPI) 150
 -200 SP (mV) 0

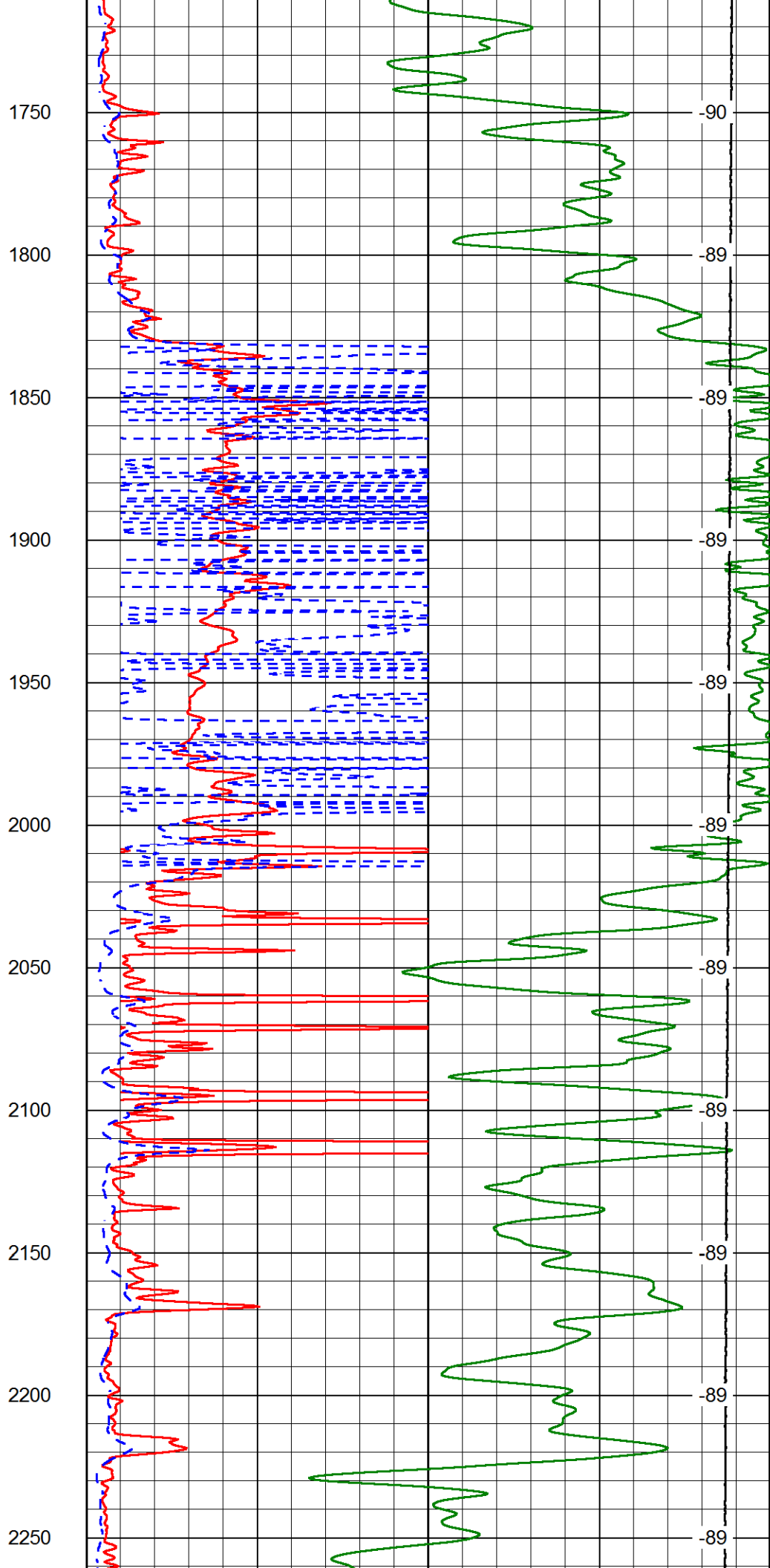
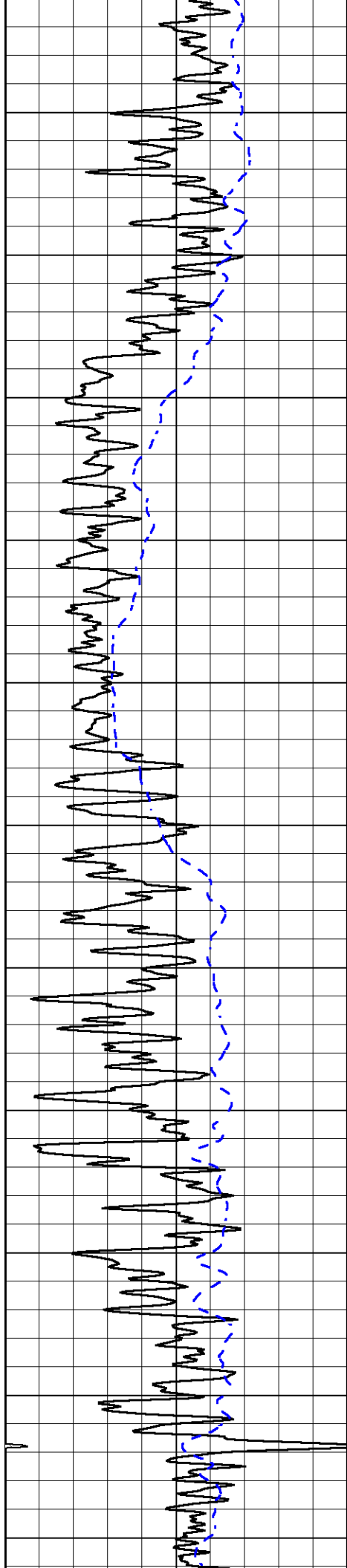
1000 Conductivity 0
 15000 Line Tension (lb) 0

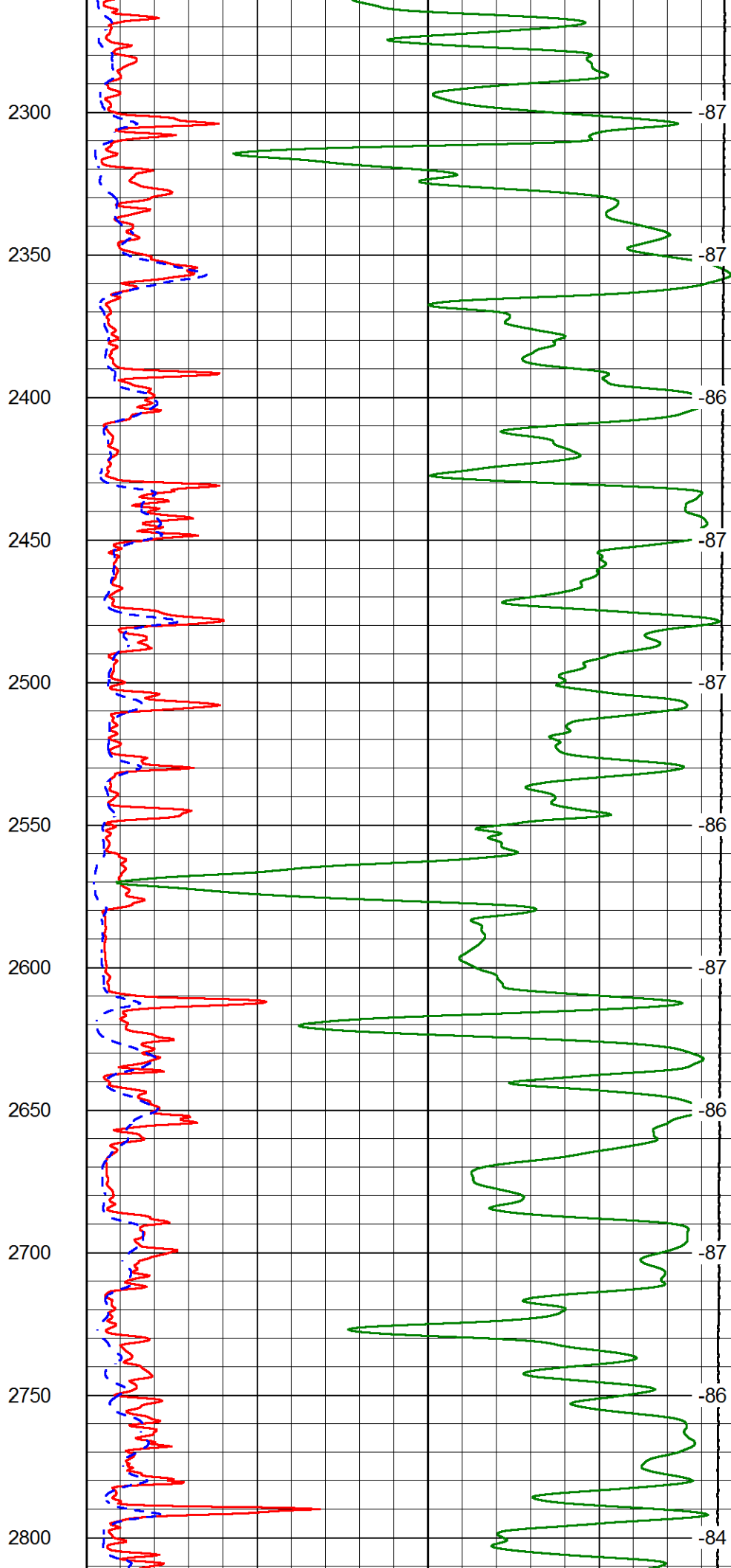
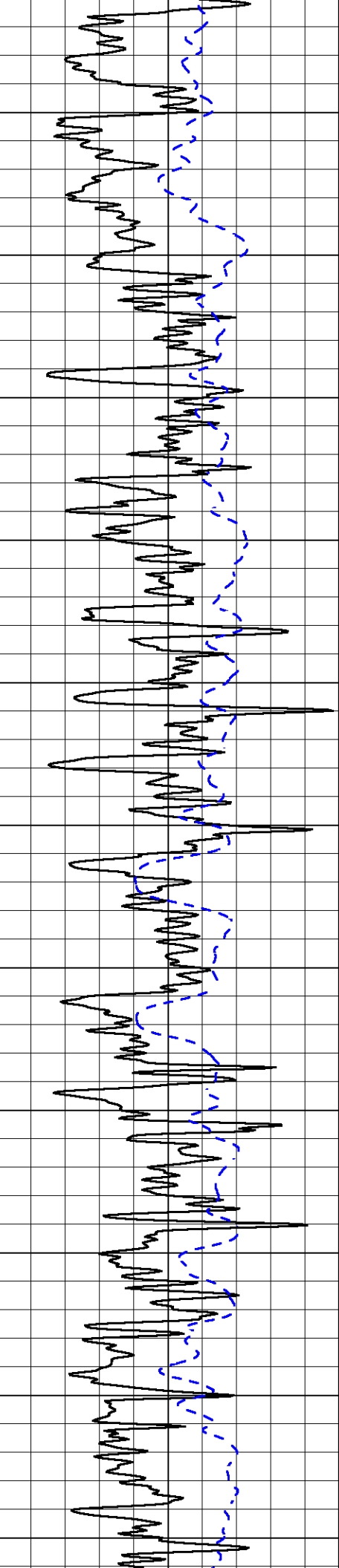
0 Shallow Resistivity (Ohm-m) 50
 0 Deep Resistivity (Ohm-m) 50
 Shallow Resistivity
 50 (Ohm-m) 500
 50 Deep Resistivity (Ohm-m) 500
 LSPD (ft/min)

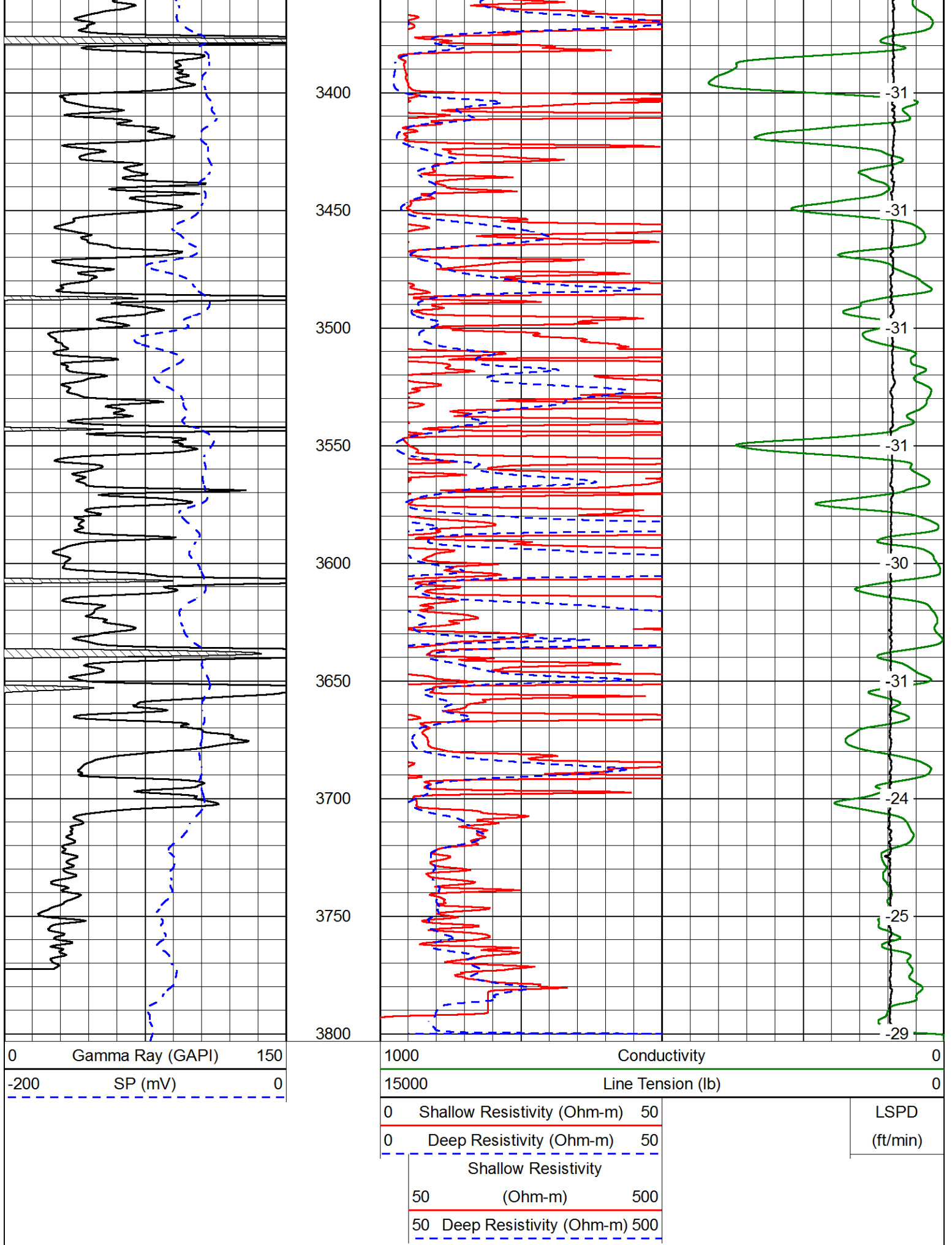










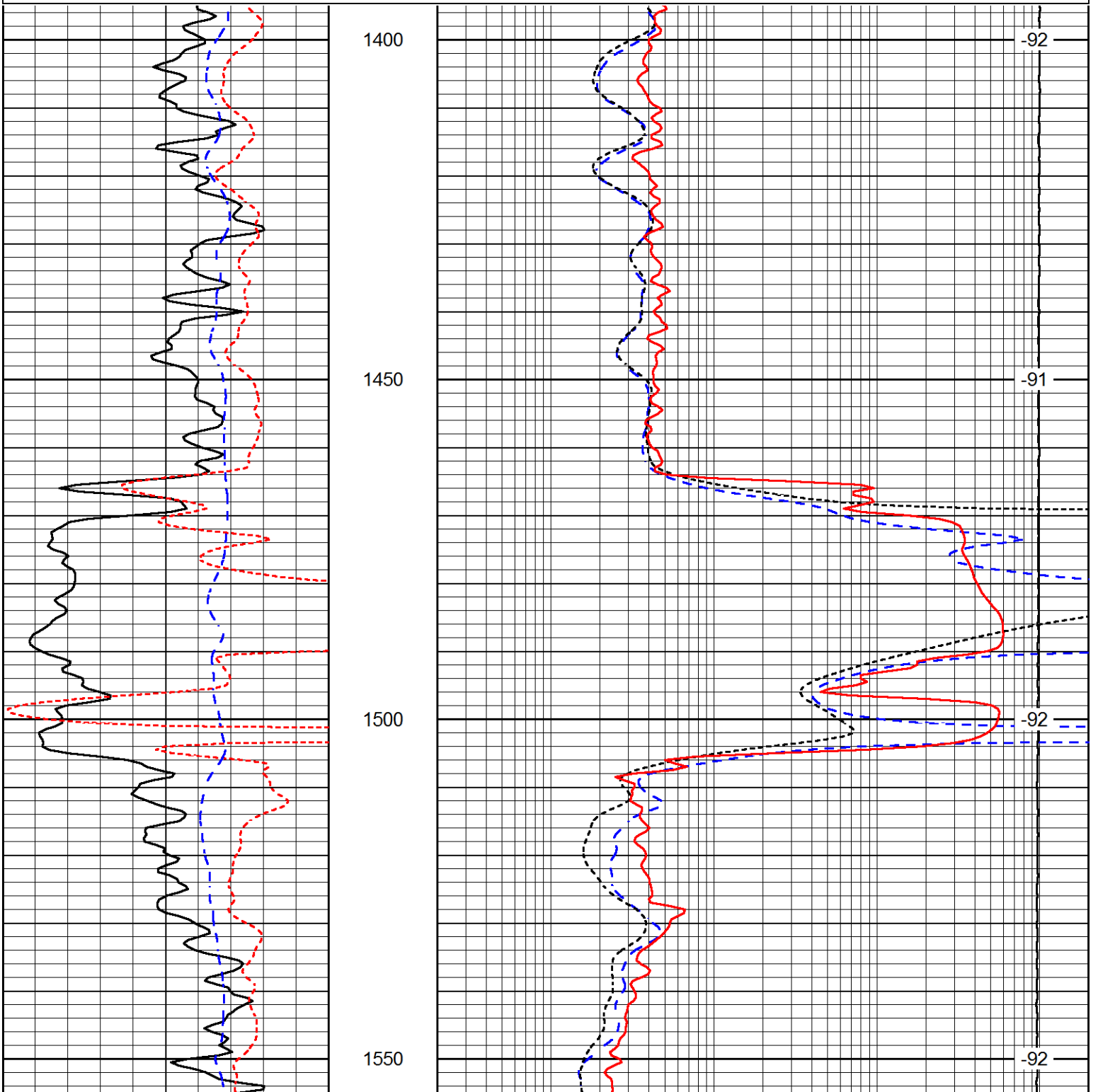


Database File tdi_lynette_1hd.db
 Dataset Pathname DIL/tdstack
 Presentation Format dil
 Dataset Creation Wed Apr 13 08:31:26 2016
 Charted by Depth in Feet scaled 1:240

0	Gamma Ray (GAPI)	150
-160	RxoRt	40
-200	SP (mV)	0

0.2	Deep Resistivity (Ohm-m)	2000
0.2	Medium Resistivity (Ohm-m)	2000
0.2	Shallow Resistivity (Ohm-m)	2000
10000	Line Tension (lb)	0

LSPD
(ft/min)



0	Gamma Ray (GAPI)	150
-160	RxoRt	40
-200	SP (mV)	0

0.2	Deep Resistivity (Ohm-m)	2000
0.2	Medium Resistivity (Ohm-m)	2000
0.2	Shallow Resistivity (Ohm-m)	2000

-200	SP (mV)	0
------	---------	---

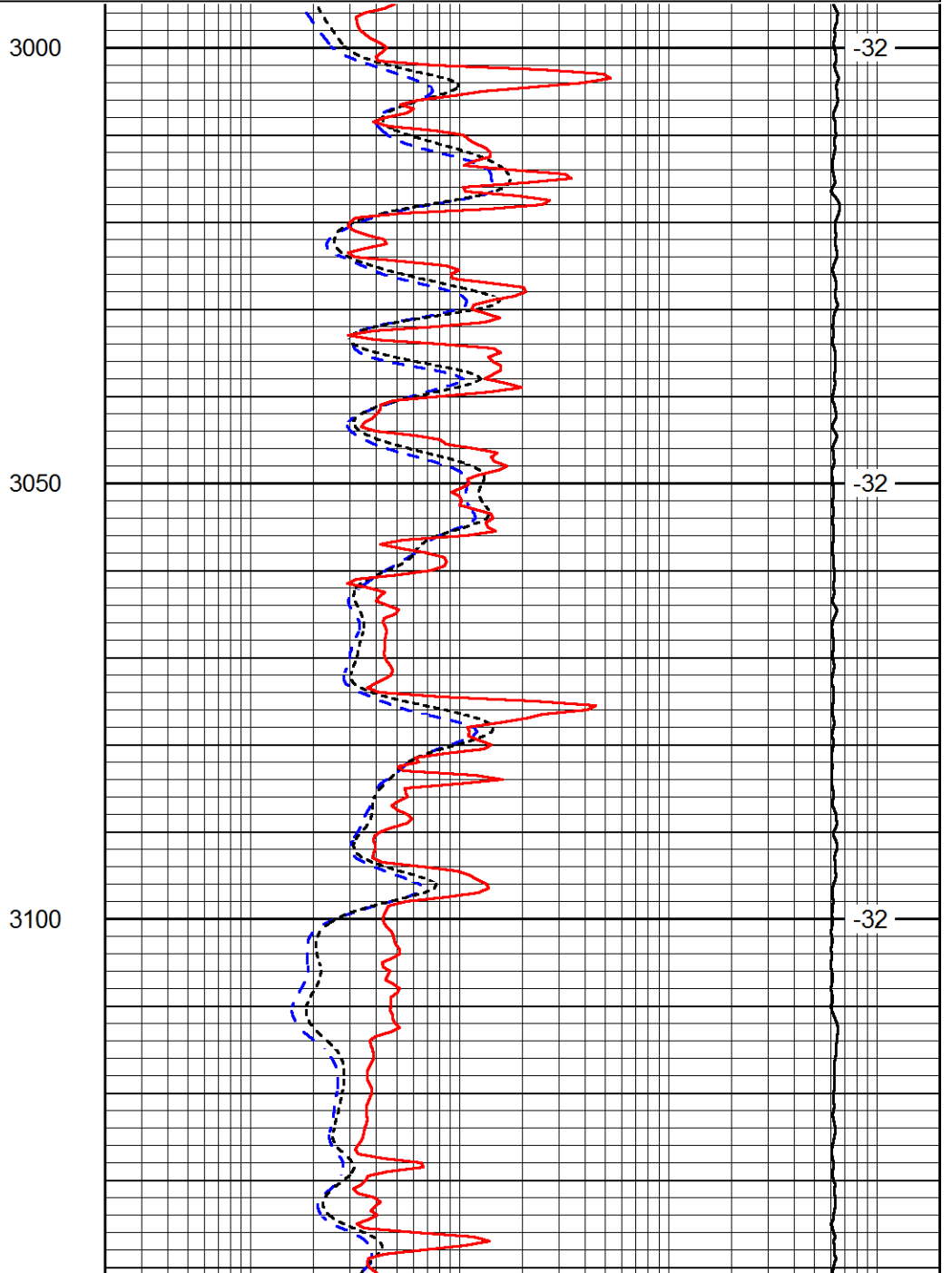
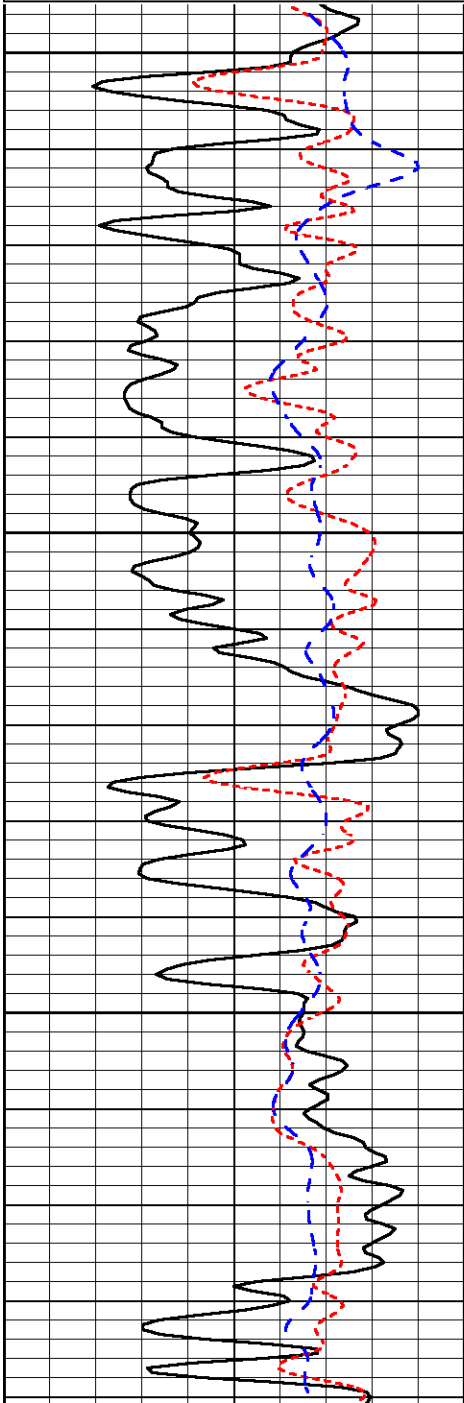
0.2	Shallow Resistivity (Ohm-m)	2000
10000	Line Tension (lb)	0
		LSPD (ft/min)

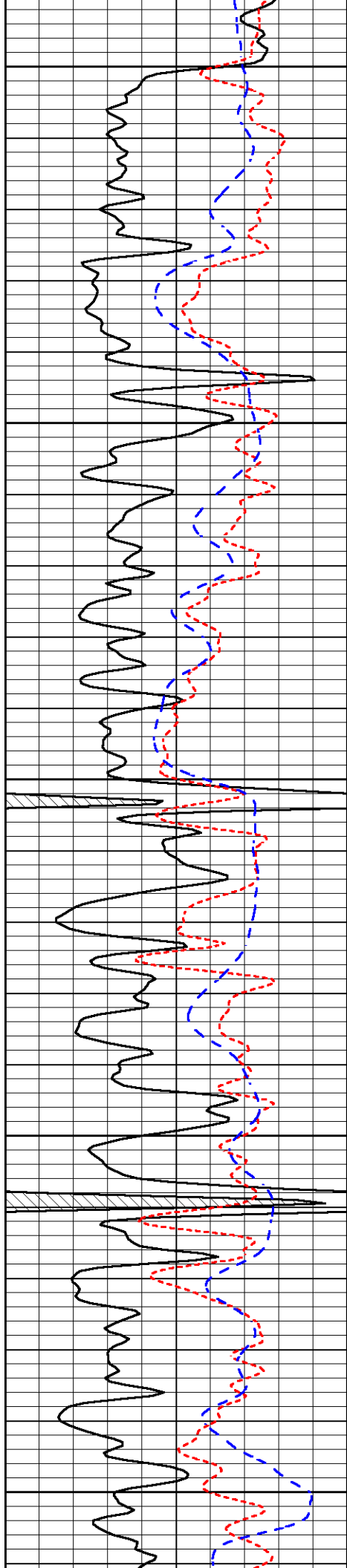
Database File tdi_lynette_1hd.db
 Dataset Pathname DIL/tdstack
 Presentation Format dil
 Dataset Creation Wed Apr 13 08:31:26 2016
 Charted by Depth in Feet scaled 1:240

0	Gamma Ray (GAPI)	150
-160	RxoRt	40
-200	SP (mV)	0

0.2	Deep Resistivity (Ohm-m)	2000
0.2	Medium Resistivity (Ohm-m)	2000
0.2	Shallow Resistivity (Ohm-m)	2000
10000	Line Tension (lb)	0

LSPD (ft/min)





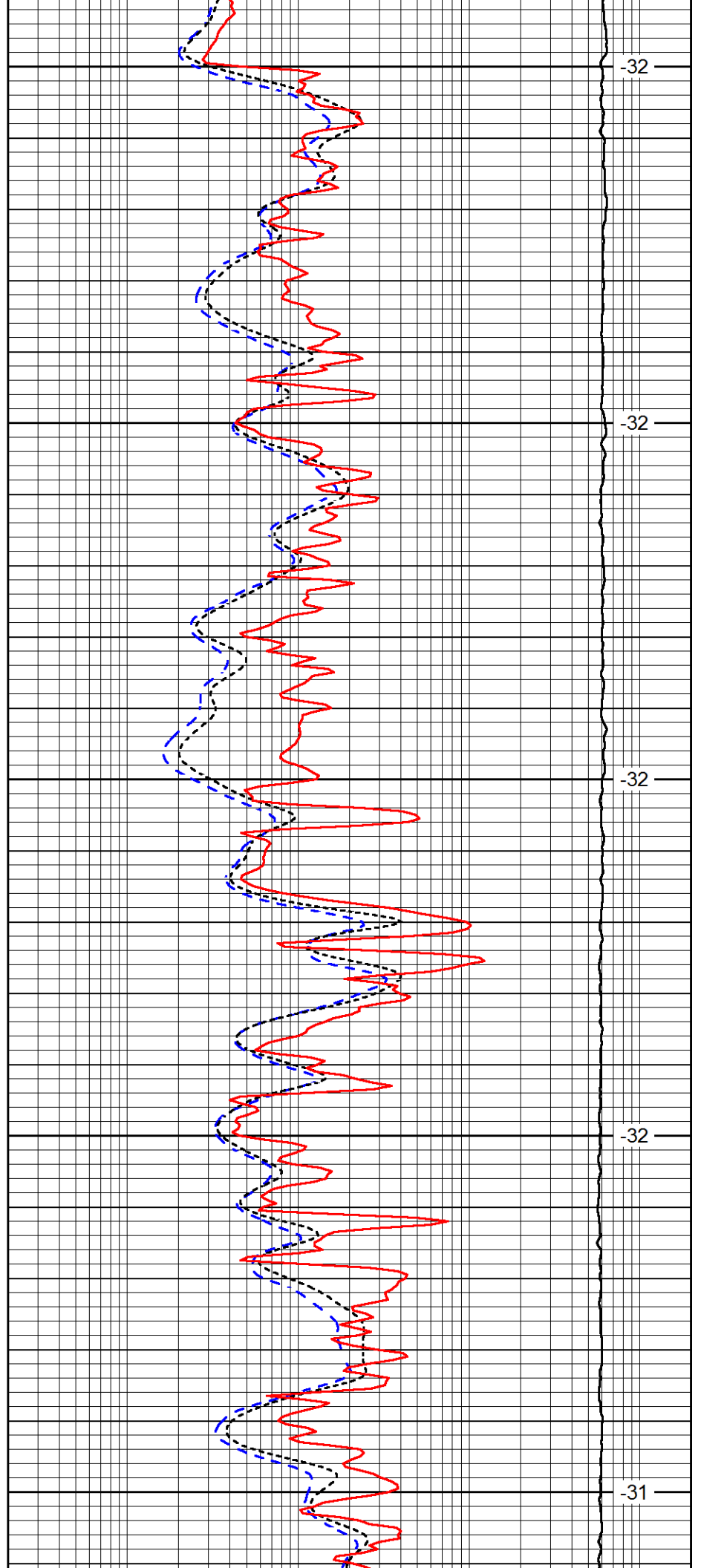
3150

3200

3250

3300

3350



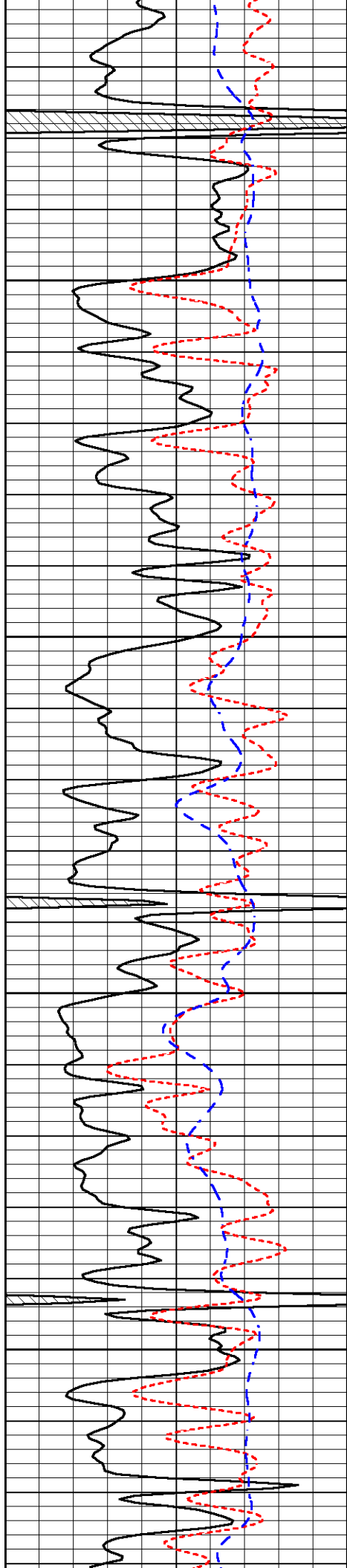
-32

-32

-32

-32

-31

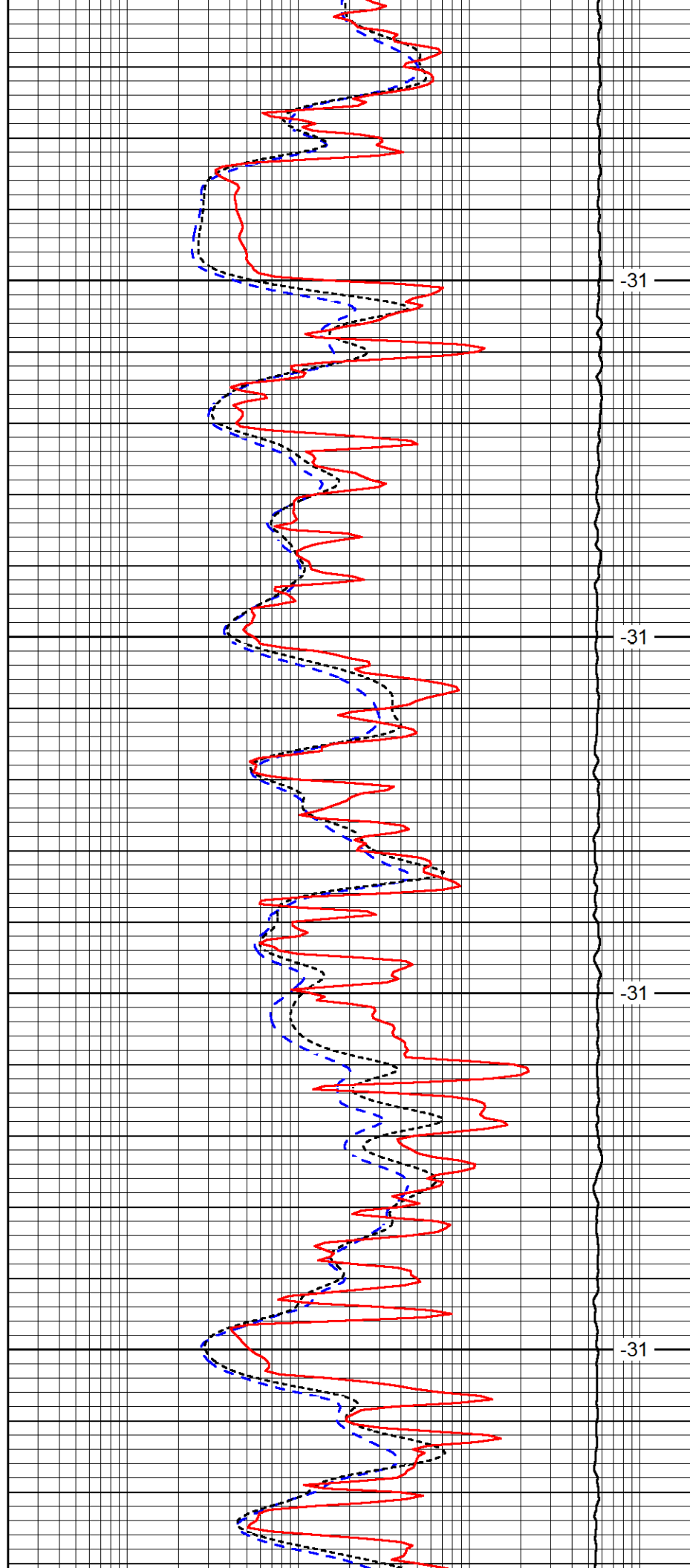


3400

3450

3500

3550

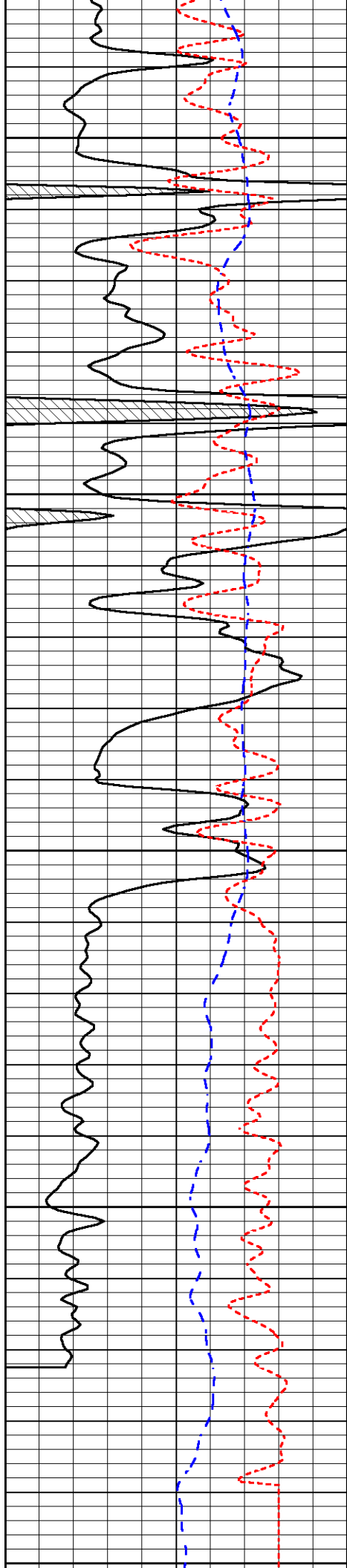


-31

-31

-31

-31



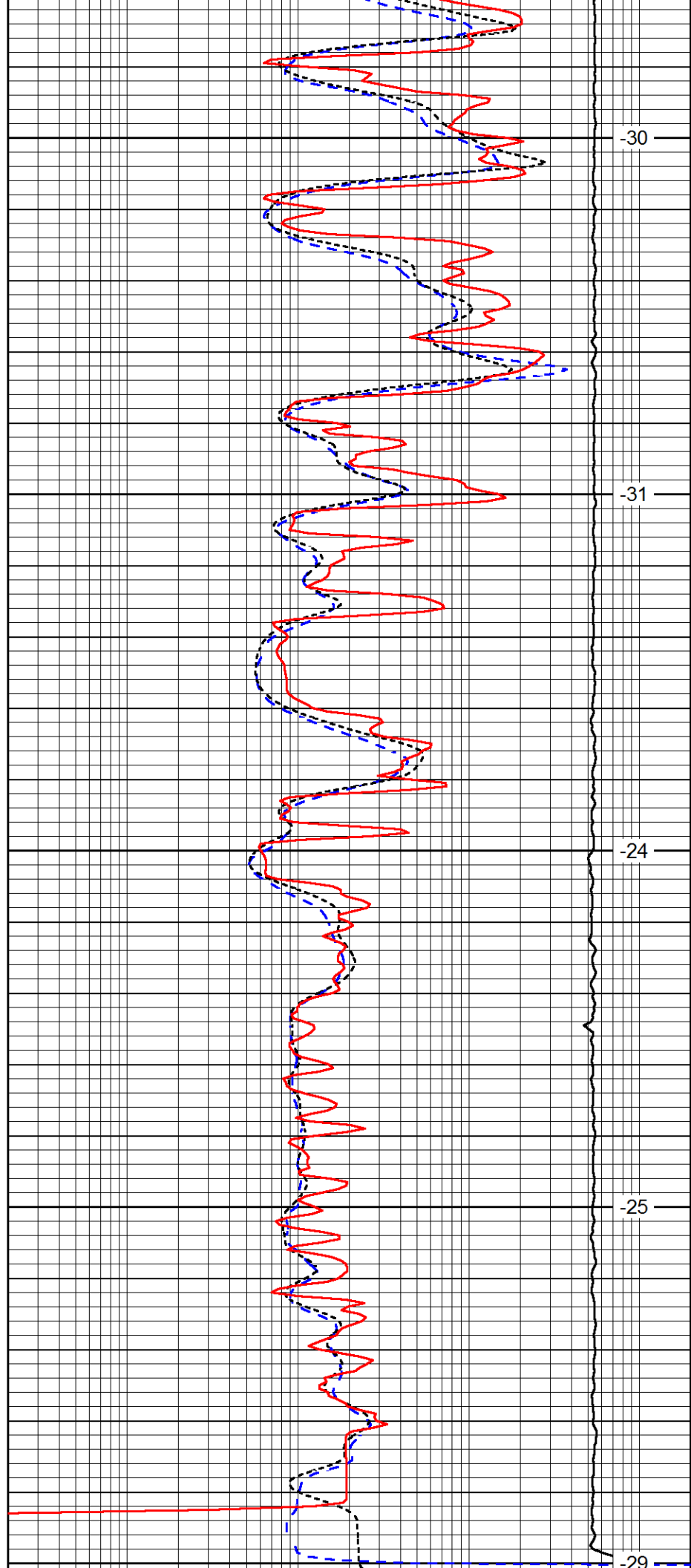
3600

3650

3700

3750

3800



-30

-31

-24

-25

-29

0	Gamma Ray (GAPI)	150
-160	RxoRt	40
-200	SP (mV)	0

0.2	Deep Resistivity (Ohm-m)	2000
0.2	Medium Resistivity (Ohm-m)	2000
0.2	Shallow Resistivity (Ohm-m)	2000
10000	Line Tension (lb)	0

LSPD
(ft/min)