



**GAMMA RAY
NEUTRON
COMPLETION LOG**

Company **LAYMON OIL II LLC**
Well **GLADES # 126-18**
Field **VERNON**
County **WOODSON** State **KANSAS**

Location: **SEC 9 TWP 24S RGE 16E**
SMS/M/NE/E
4120 FSL & 11207 FEL
API #: 15-207-29889-00-00

Perment Datum **SEC 9 TWP 24S RGE 16E**
Log Measured From **G.L.** Elevation **1033'**
Drilling Measured From **G.L.** Elevation **1033'**

Date **10-2-2018**
Run Number **1-NEWMELL**
Depth Logger **1120**
1110.8'

Top Log Interval **SURFACE**
Bottom Logged Interval **1110.8'**
Fluid Level **WATER**

Type Fluid **FULL**
Production Casing **2 7/8" @ T.D.**
Max. Reported Temp. **④**
Estimated Cement Top **④**
Calculated Cement Top **④**

Amount & Type Cement **COMPANY TOOLS**
Drilling Contractor **107**
Equipment Number **COMPANY TOOLS**

Location **UDEN, D.**
Recorded By **LAYMON, M.**

Witnessed By **LAYMON, M.**

<<< Fold Here >>>

All interpretations are opinions based on inferences from electrical or other measurements and we cannot and do not guarantee the accuracy or correctness of any interpretation, and we shall not, except in the case of gross or willful negligence on our part, be liable or responsible for any loss, costs, damages, or expenses incurred or sustained by anyone resulting from any interpretation made by any of our officers, agents or employees. These interpretations are also subject to our general terms and conditions set out in our current Price Schedule.

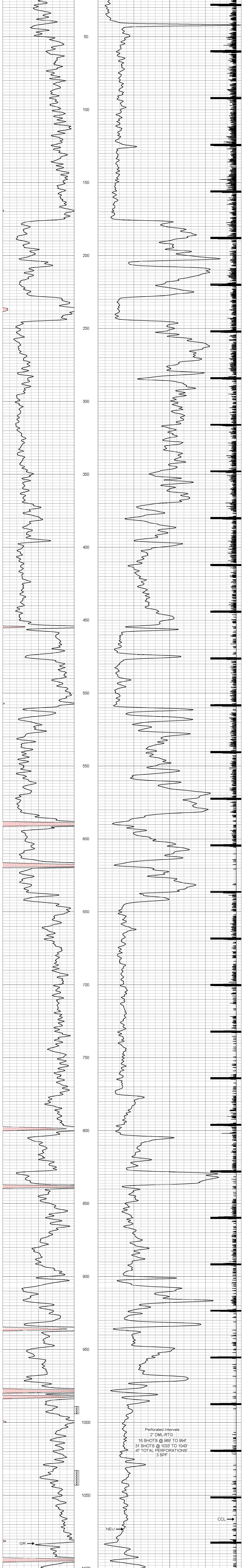
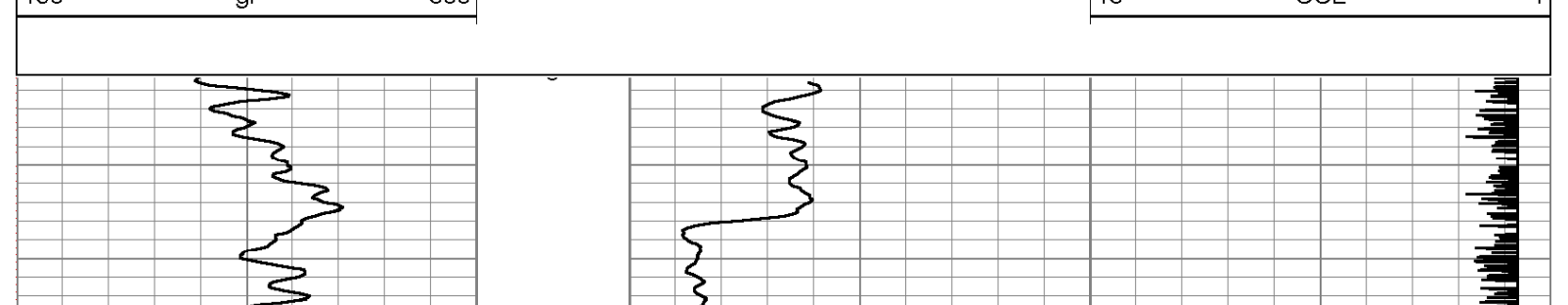
Comments

THANK YOU

Sensor	Offset (ft)	Schematic	Description	Len (ft)	OD (in)	Wt (lb)
GR	7.59		GR-TITAN_169 (TIT169_001) Titan 1 11/16" Gamma Ray	4.75	1.69	20.00
CCL	5.05		CCL-TITAN_169 (TIT169) Titan 1 11/16" Logging CCL	1.83	1.69	7.50
NEU	0.63		NEU-TITAN_169 (TIT169_001) Titan 1 11/16" Neutron	4.33	1.69	20.00

Dataset: glades # 126-18.db; field/well/run/pass2
Total Length: 70.92 ft
Total Weight: 47.50 lb
O.D.: 1.69 in

Database File: f:\glades # 126-18.db
Dataset Pathname: pass2
Presentation Format: gr-n-cc
Dataset Creation: Tue Oct 02 09:37:04 2018 by Log Std Casdhole 07122
Charted by: Depth in Feet scaled 1.240



Company **LAYMON OIL II LLC**
Well **GLADES # 126-18**
Field **VERNON**
County **WOODSON** SEC 9 TWP. 24S RGE 16E
State **KANSAS** Date **10-2-2018**

