



**DUAL
INDUCTION
LOG**

| | | | | |
|------------------------|-----------------------------|---|---------------------------|--|
| Company | TRIPLE CROWN OPERATING LLC. | Location: | API # : 15-135-26007-0000 | Other Services CDL/CNL |
| Well | LANE TRUST #2-3 | | | |
| Field | | 732 FNL & 965' FWL | | |
| County | NESS | SEC 3 TWP 20S RGE 24W | | |
| State | KANSAS | GROUND LEVEL Elevation 2317 | | Elevation K.B. 2322 D.F. 2320 G.L. 2317 |
| Permanent Datum | | Log Measured From KELLY BUSHING 5' A.G.L | | |
| Drilling Measured From | | KELLY BUSHING | | |

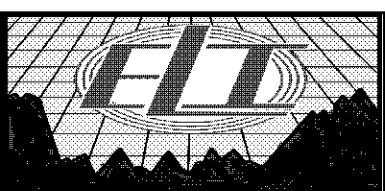
| | |
|------------------------------|-------------------|
| Date | 5/31/18 |
| Run Number | ONE |
| Depth Driller | 4445 |
| Depth Logger | 4444 |
| Bottom Logged Interval | 4442 |
| Top Log Interval | 00 |
| Casing Driller | 8 5/8" @ 218 |
| Casing Logger | 218 |
| Bit Size | 7 7/8 |
| Type Fluid in Hole | CHEMICAL MUD |
| Density / Viscosity | 9.3/47 |
| PH / Fluid Loss | 10.0/8.8 |
| Source of Sample | FLOWLINE |
| Rm @ Meas. Temp | .65 @ 90F |
| Rmt @ Meas. Temp | .48 @ 90F |
| Rmc @ Meas. Temp | .78 @ 90F |
| Source of Rmf / Rmc | MEASUREMENT |
| Rm @ BHT | .48 @ 120F |
| Time Circulation Stopped | 2 HOURS |
| Time Logger on Bottom | //// |
| Maximum Recorded Temperature | 120F |
| Equipment Number | 3802 |
| Location | HAYS, KANSAS |
| Recorded By | JASON CAPPELLUCCI |
| Witnessed By | SEAN DEENIHAN |

<<< Fold Here >>>

All interpretations are opinions based on inferences from electrical or other measurements and we cannot and do not guarantee the accuracy or correctness of any interpretation, and we shall not, except in the case of gross or willful negligence on our part, be liable or responsible for any loss, costs, damages, or expenses incurred or sustained by anyone resulting from any interpretation made by any of our officers, agents or employees. These interpretations are also subject to our general terms and conditions set out in our current Price Schedule.

Comments

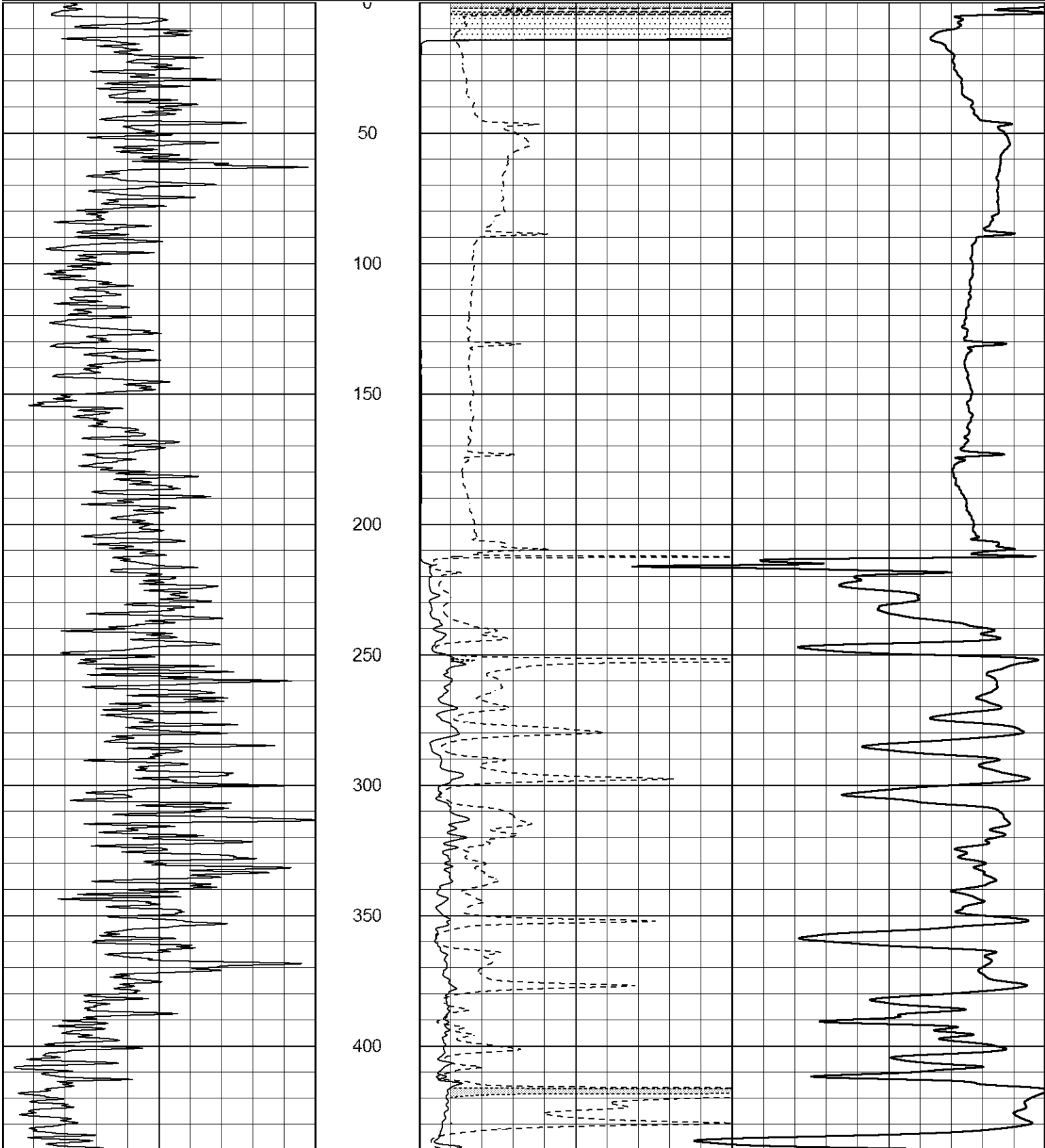
THANK YOU FOR USING ELI WIRELINE SERVICES, HAYS, KS. (785) 628-6395
DIRECTIONS
NESS CITY, KS. - 6 SOUTH TO RD. 60 - 3 1/2 WEST - SOUTH INTO

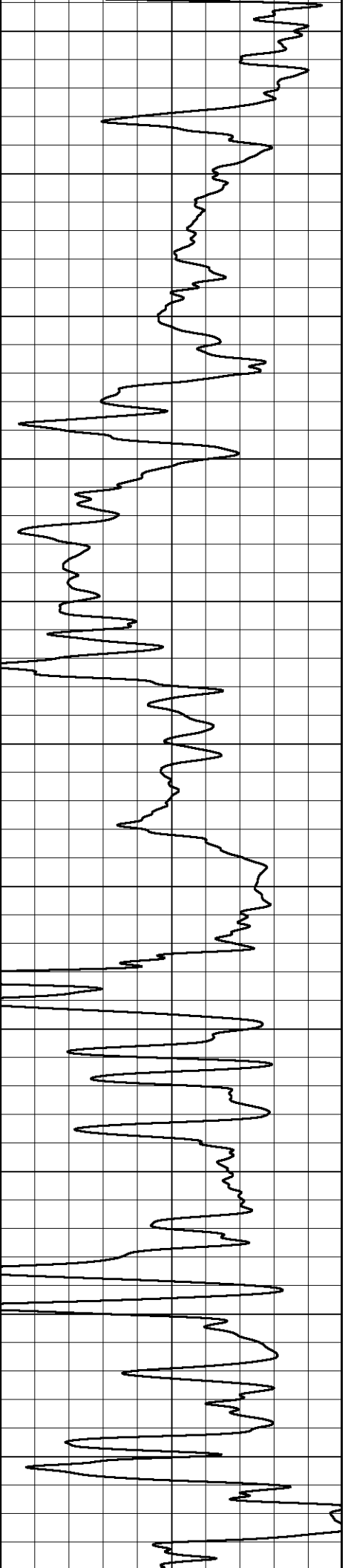
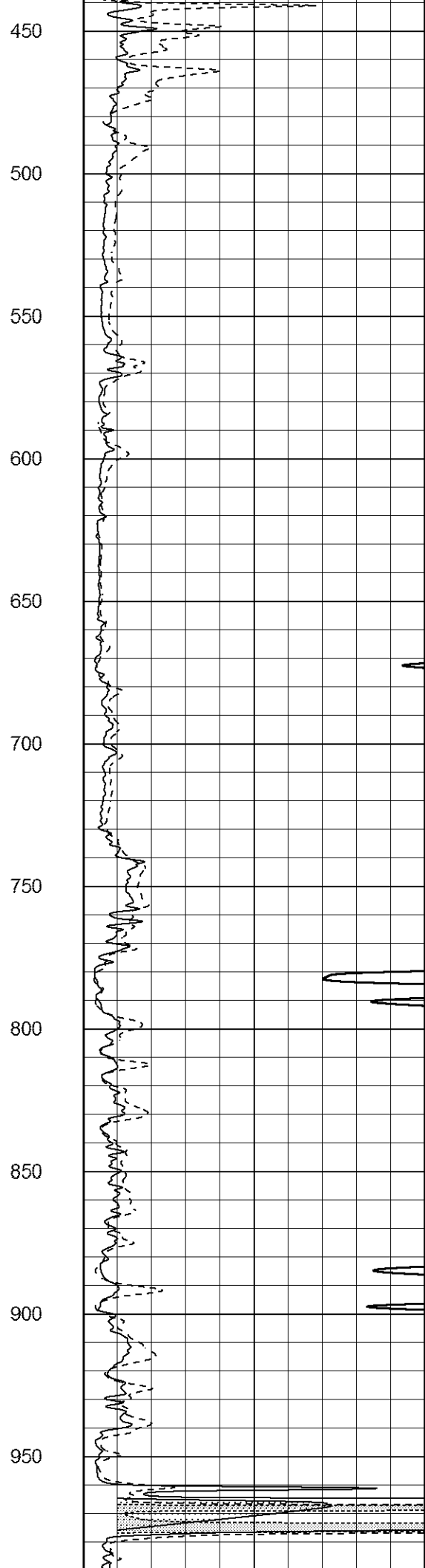
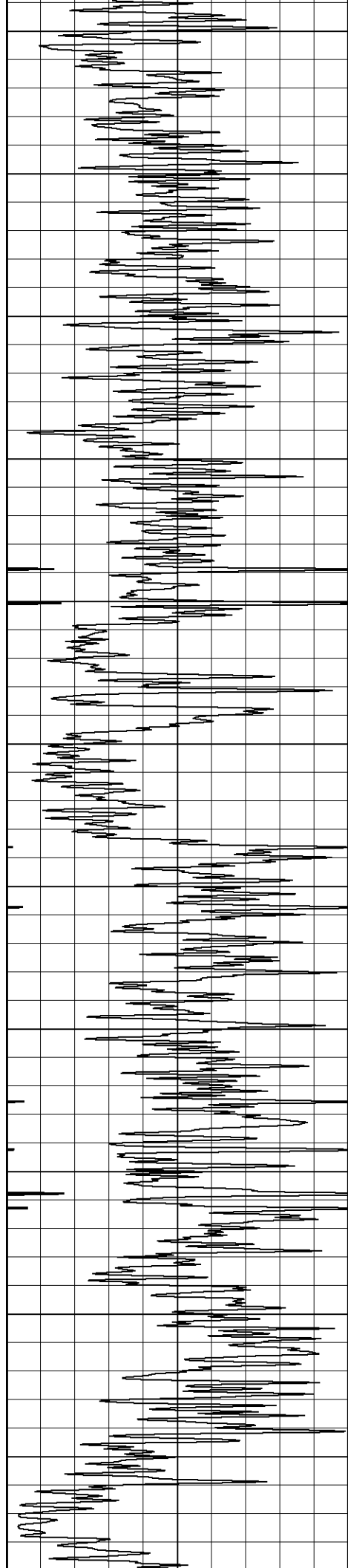


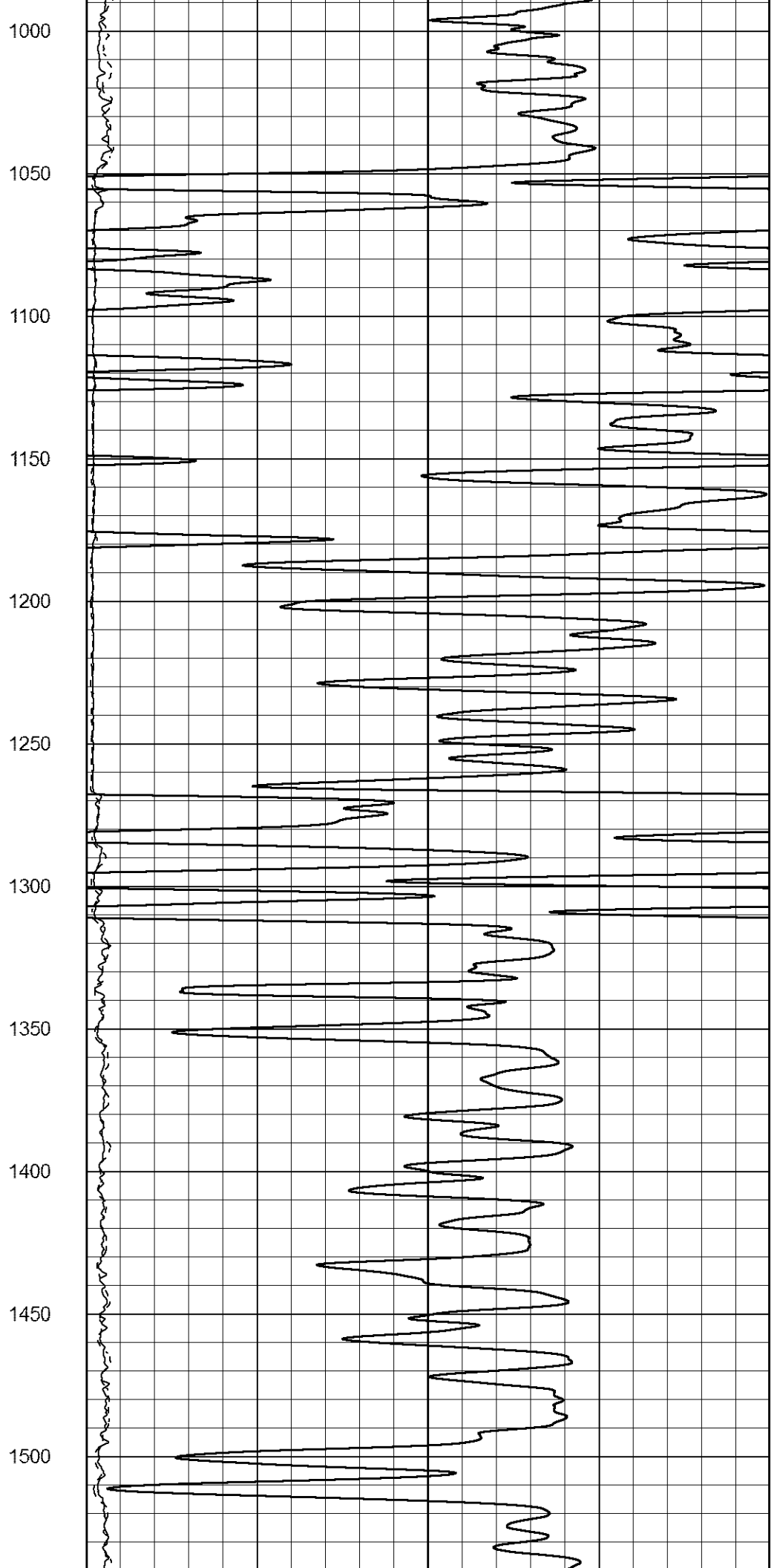
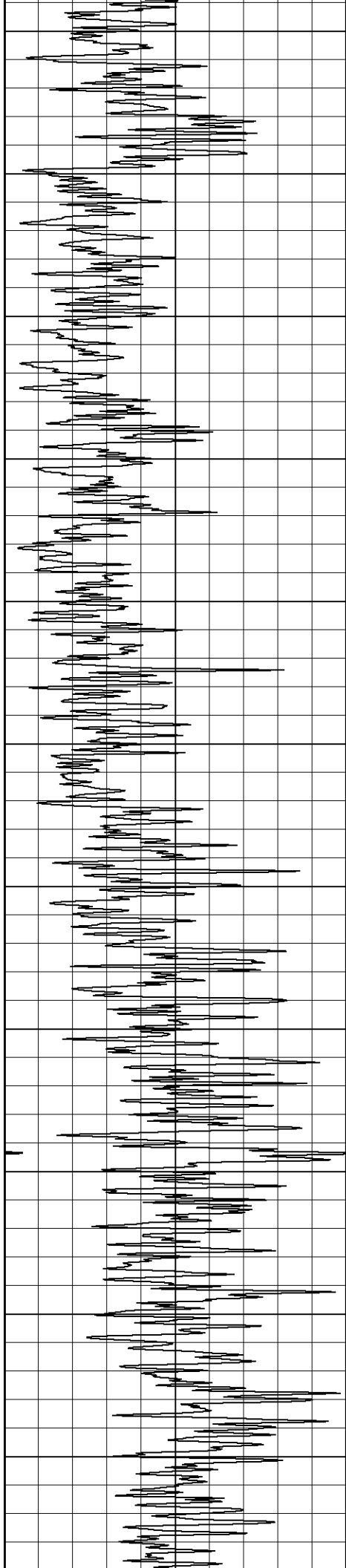
MAIN SECTION

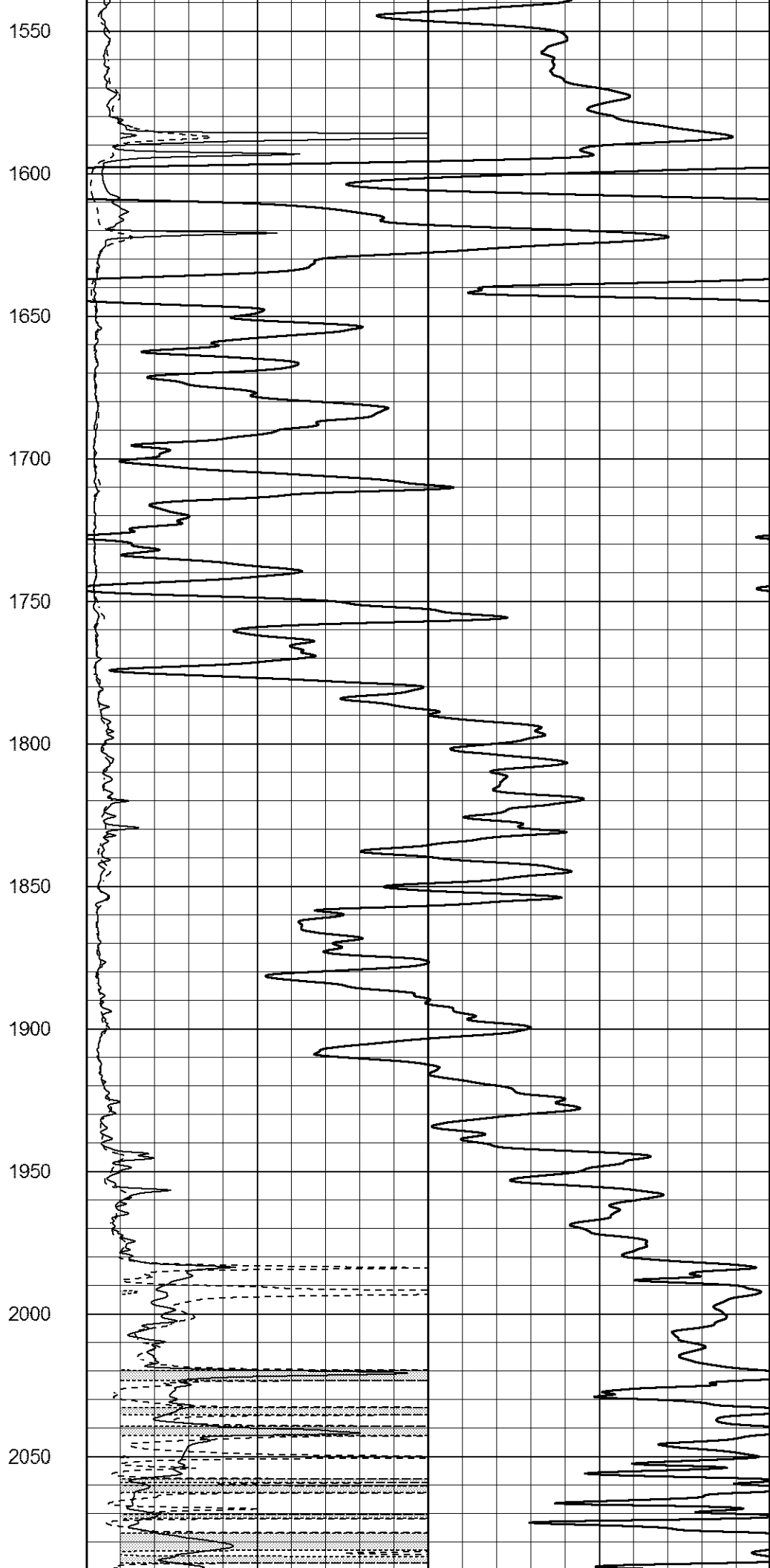
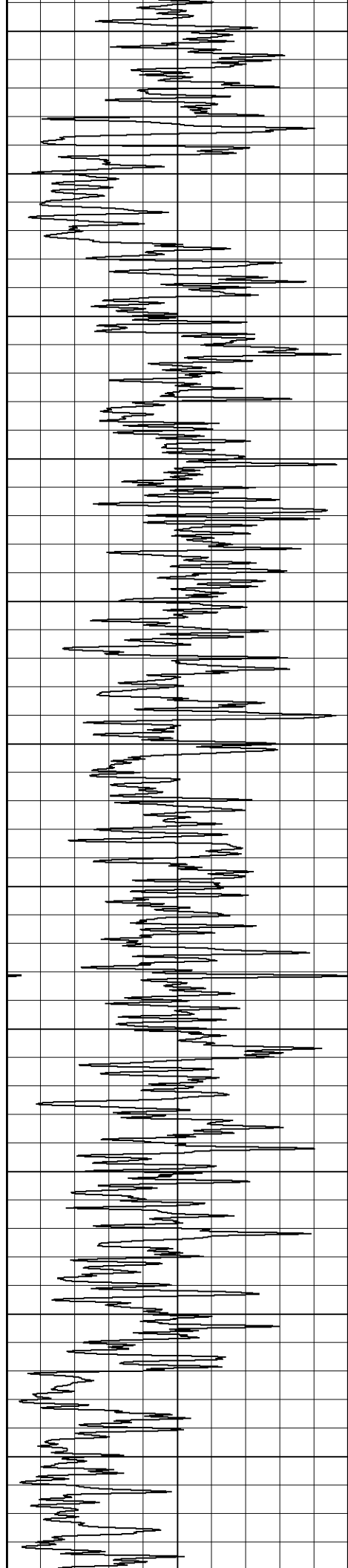
Database File 2504ddn8.db
 Dataset Pathname pass4.3
 Presentation Format _dil2
 Dataset Creation Thu May 31 13:52:23 2018
 Charted by Depth in Feet scaled 1:600

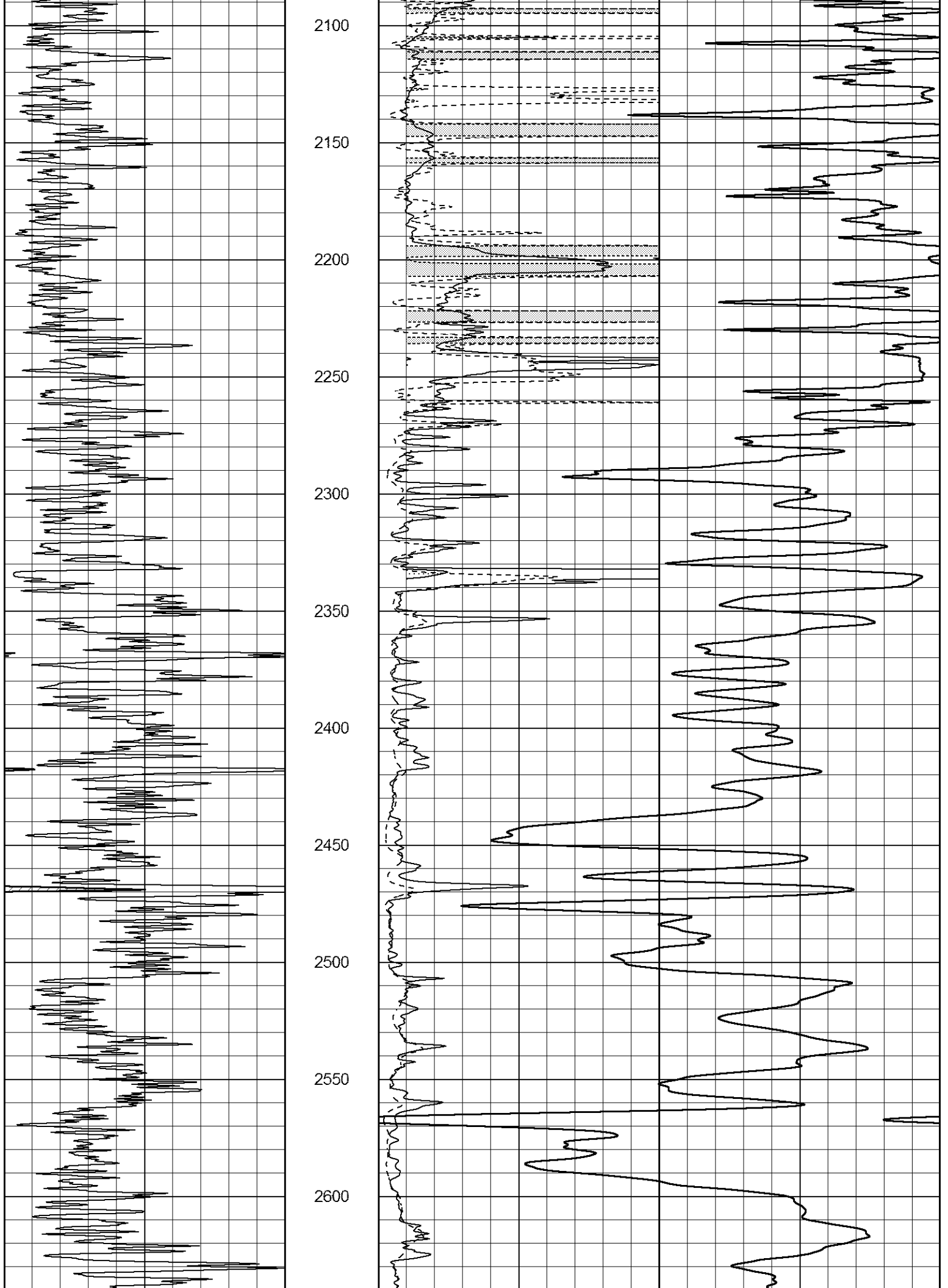
| | | | | | |
|----|------------------|-----|------|------------------------|-----|
| 0 | Gamma Ray (GAPI) | 150 | 1000 | CILD (mmho/m) | 0 |
| 0 | RLL3 (Ohm-m) | 50 | 0 | Deep Induction (Ohm-m) | 50 |
| 50 | RILD X10 (Ohm-m) | 500 | 50 | RLL3 X10 (Ohm-m) | 500 |

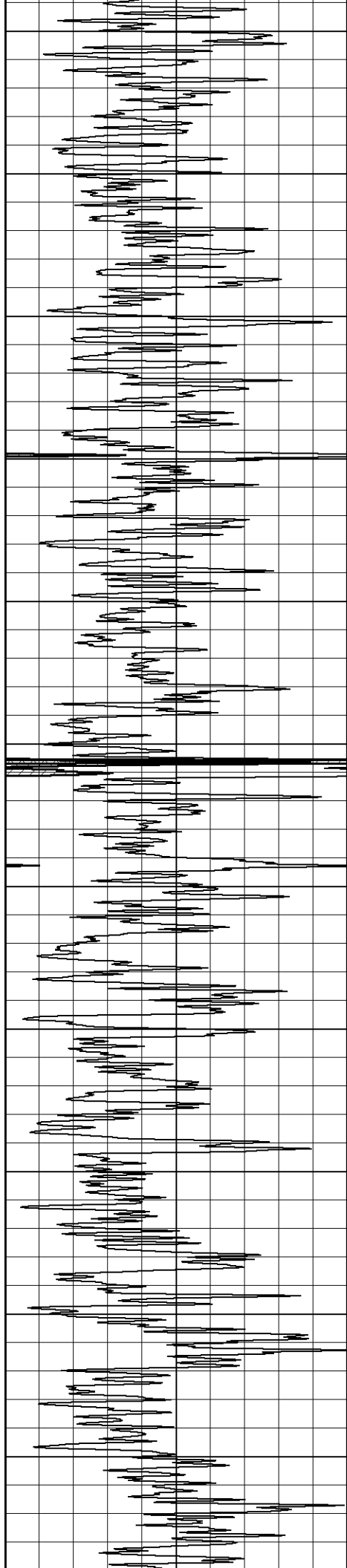




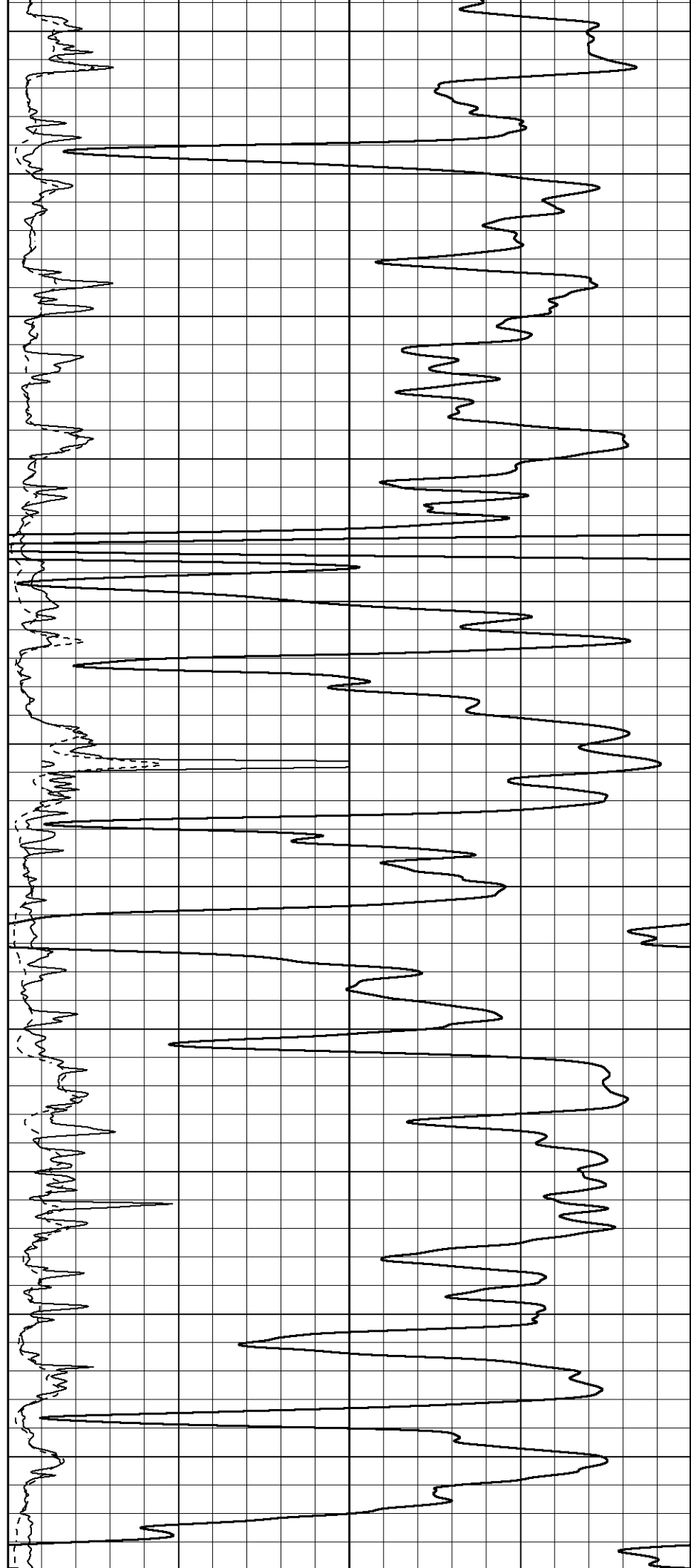


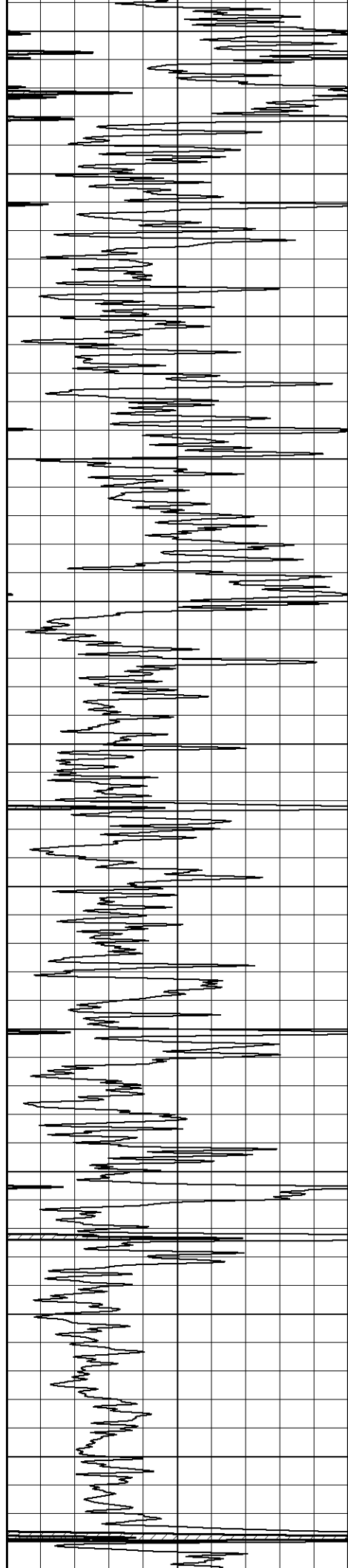






2650
2700
2750
2800
2850
2900
2950
3000
3050
3100
3150





3200

3250

3300

3350

3400

3450

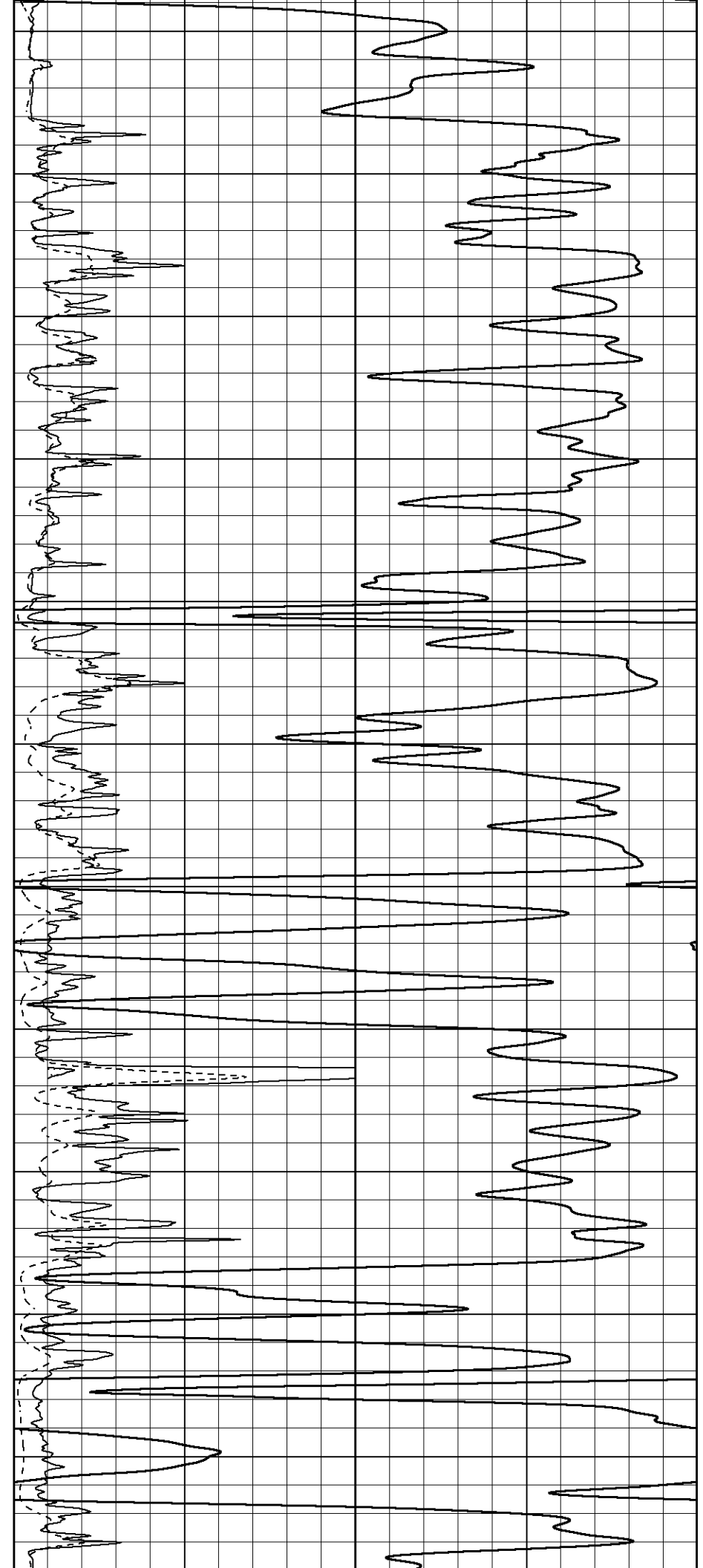
3500

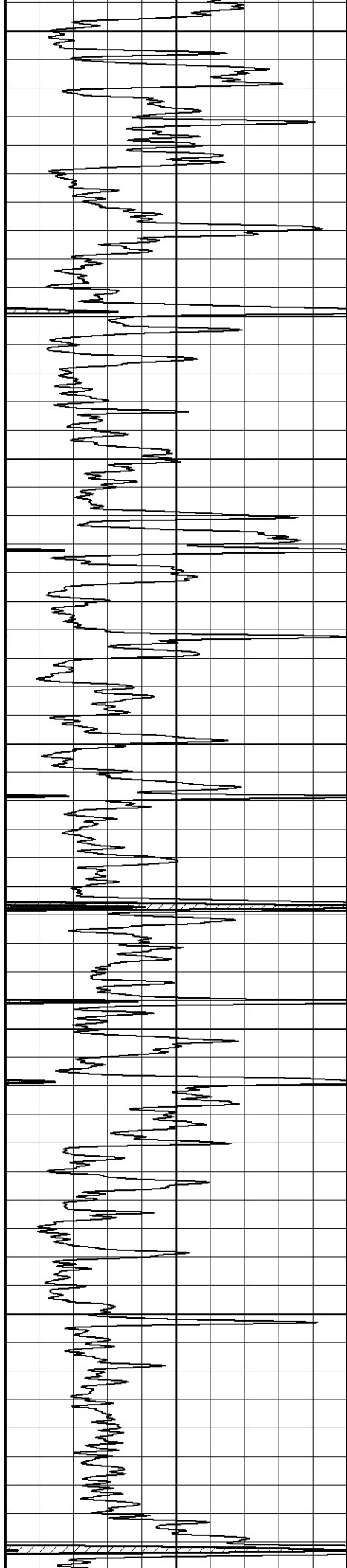
3550

3600

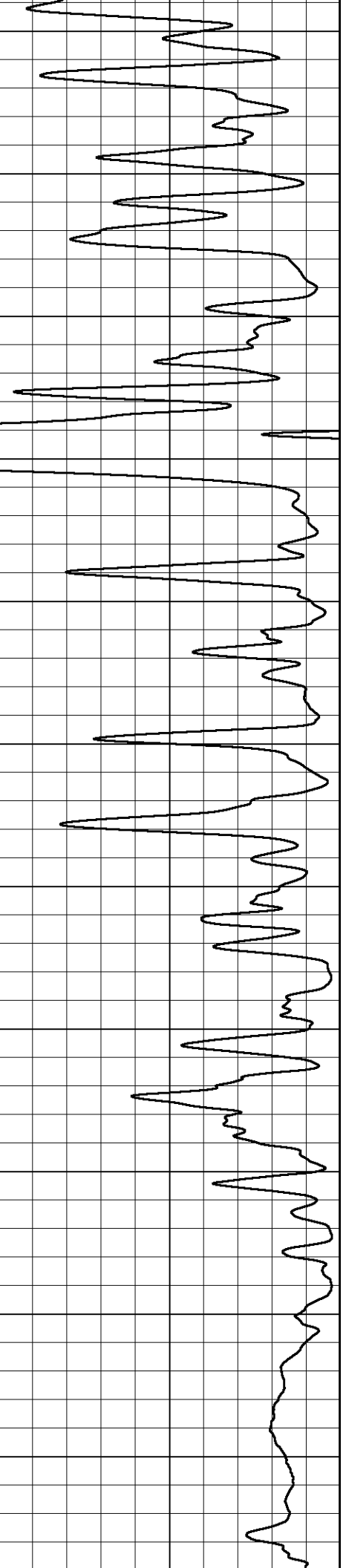
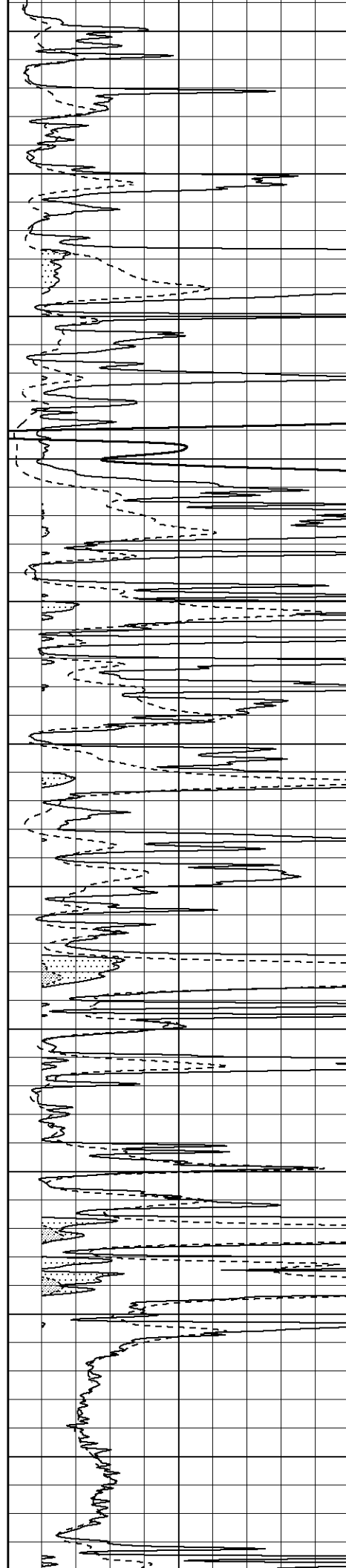
3650

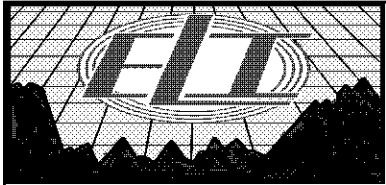
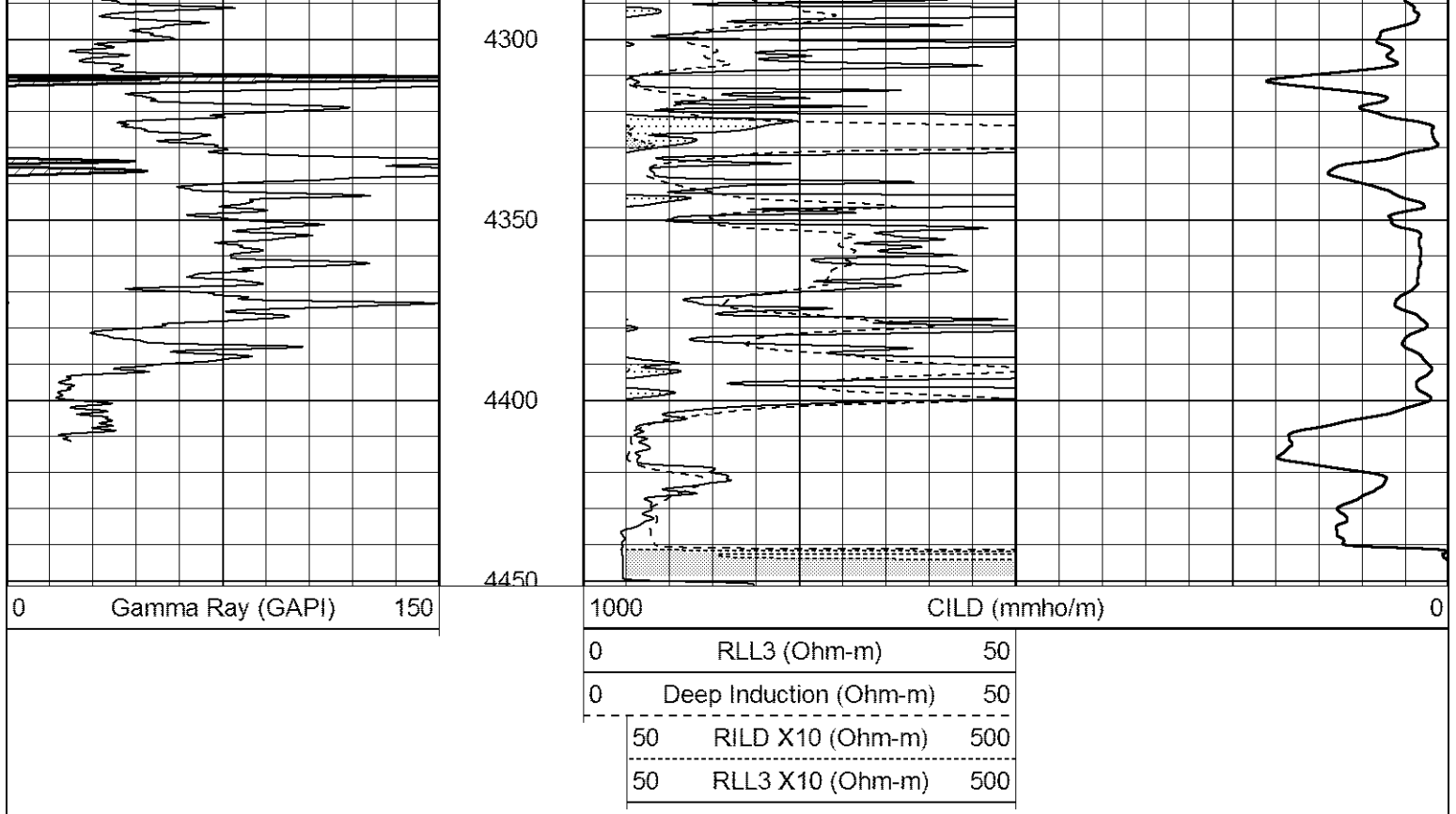
3700





3750
3800
3850
3900
3950
4000
4050
4100
4150
4200
4250

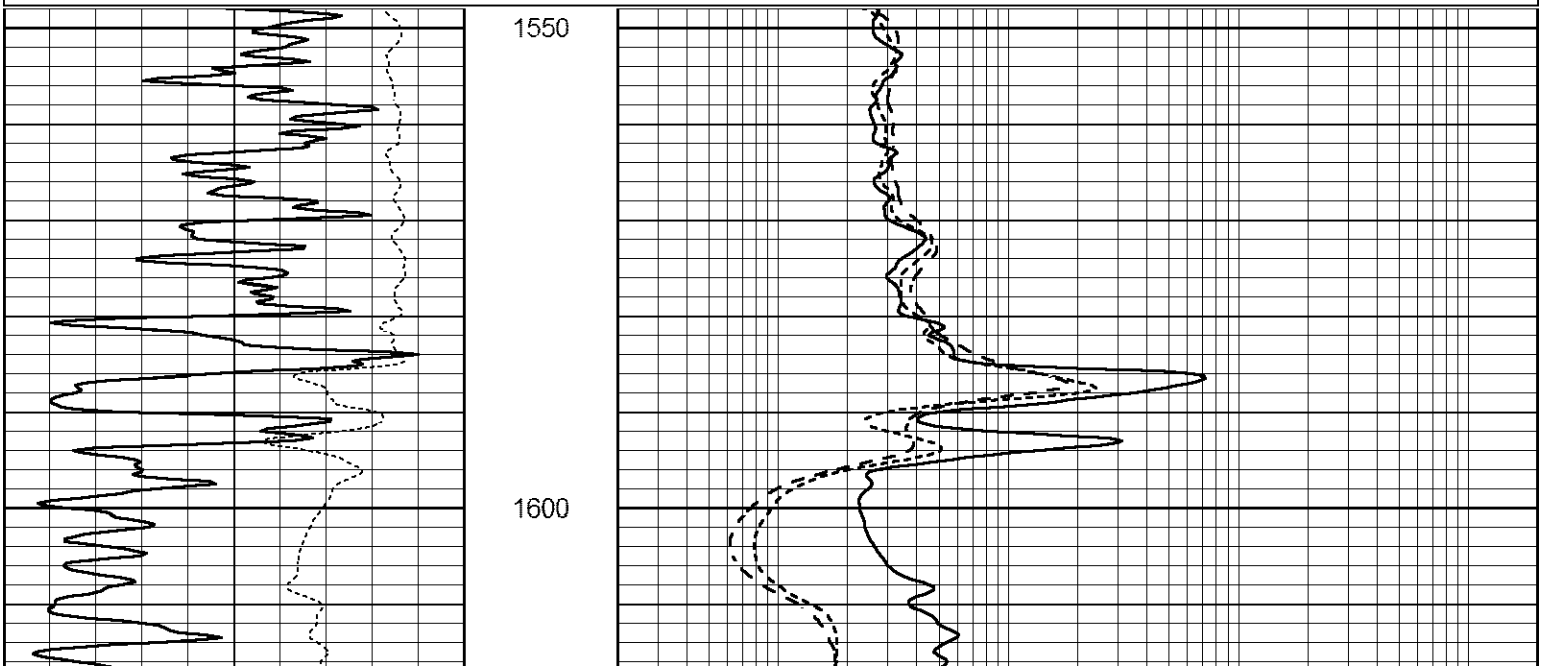


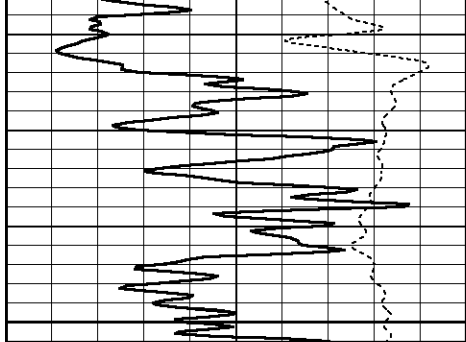


ANHYDRITE

Database File 2504ddn8.db
 Dataset Pathname pass4.2
 Presentation Format _dil
 Dataset Creation Thu May 31 13:26:01 2018
 Charted by Depth in Feet scaled 1:240

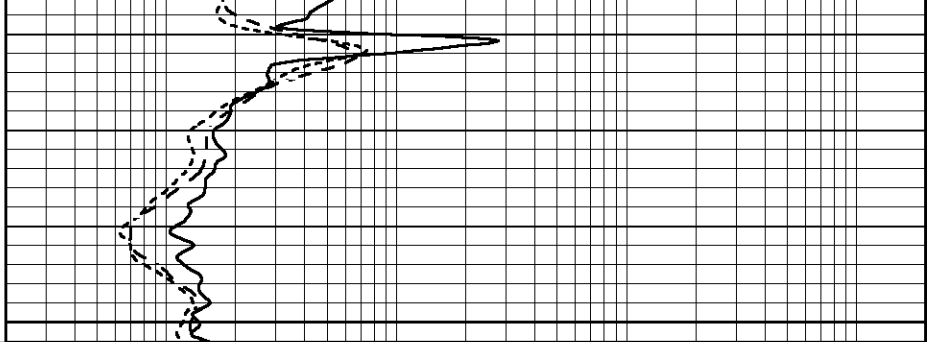
| | | | | | |
|------|------------------|-----|-----|--------------------------|------|
| 0 | GAMMA RAY (GAPI) | 150 | 0.2 | SHALLOW GUARD (Ohm-m) | 2000 |
| -250 | Rxo/Rt | 50 | 0.2 | MEDIUM INDUCTION (Ohm-m) | 2000 |
| | | | 0.2 | DEEP INDUCTION (Ohm-m) | 2000 |



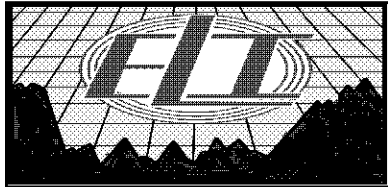


1650

| | | |
|------|------------------|-----|
| 0 | GAMMA RAY (GAPI) | 150 |
| -250 | Rxo/Rt | 50 |



| | | |
|-----|--------------------------|------|
| 0.2 | SHALLOW GUARD (Ohm-m) | 2000 |
| 0.2 | MEDIUM INDUCTION (Ohm-m) | 2000 |
| 0.2 | DEEP INDUCTION (Ohm-m) | 2000 |

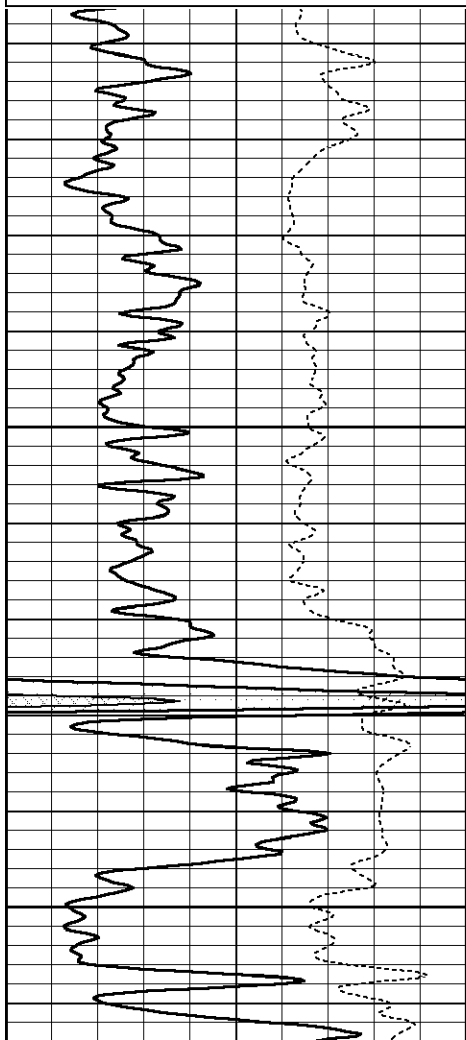


MAIN SECTION

Database File 2504ddn8.db
 Dataset Pathname pass4.1
 Presentation Format _dil
 Dataset Creation Thu May 31 13:07:07 2018
 Charted by Depth in Feet scaled 1:240

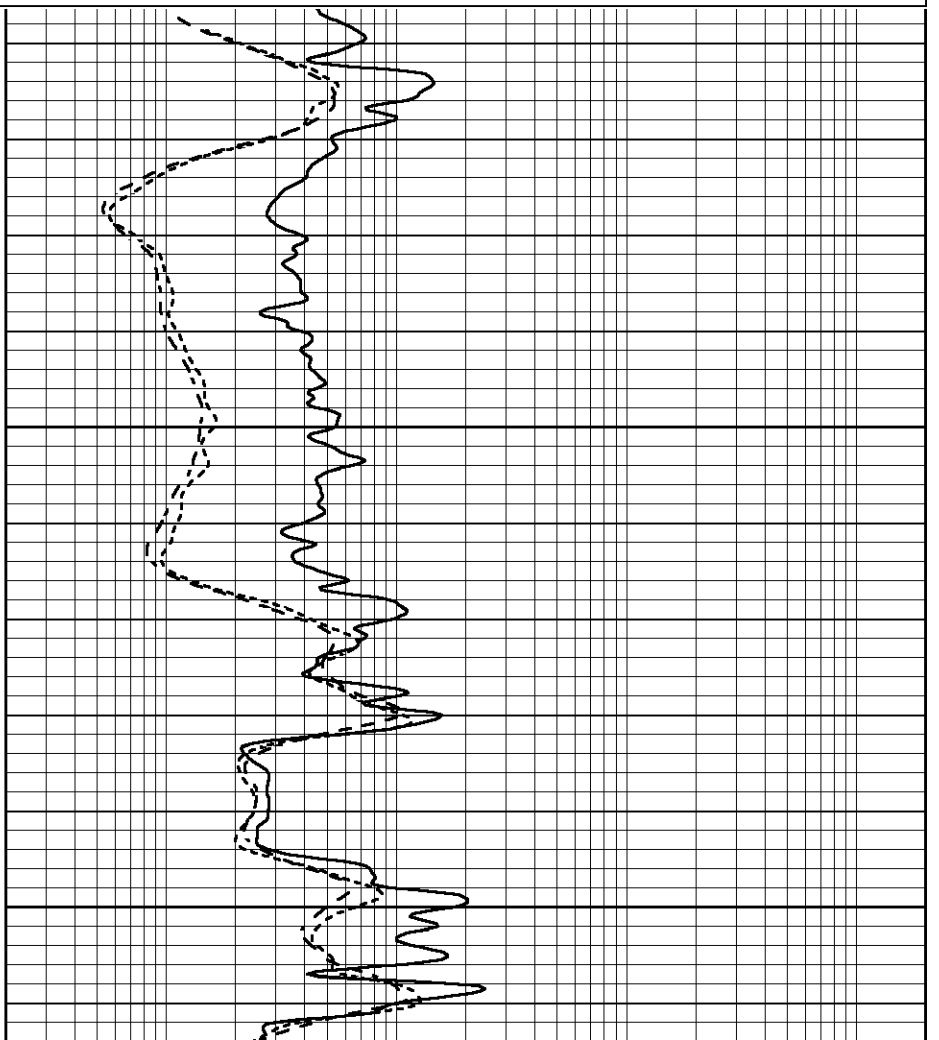
| | | |
|------|------------------|-----|
| 0 | GAMMA RAY (GAPI) | 150 |
| -250 | Rxo/Rt | 50 |

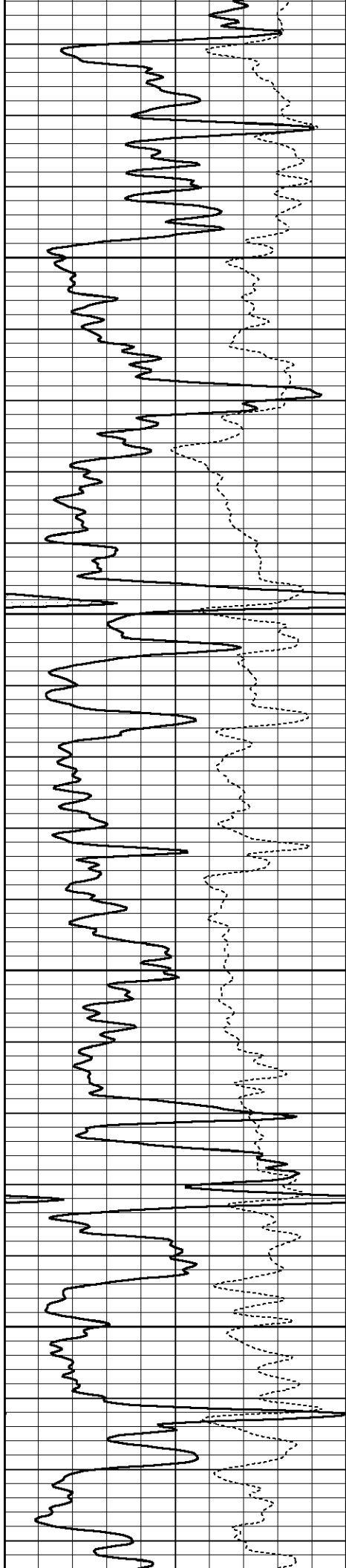
| | | |
|-----|--------------------------|------|
| 0.2 | SHALLOW GUARD (Ohm-m) | 2000 |
| 0.2 | MEDIUM INDUCTION (Ohm-m) | 2000 |
| 0.2 | DEEP INDUCTION (Ohm-m) | 2000 |



3700

3750



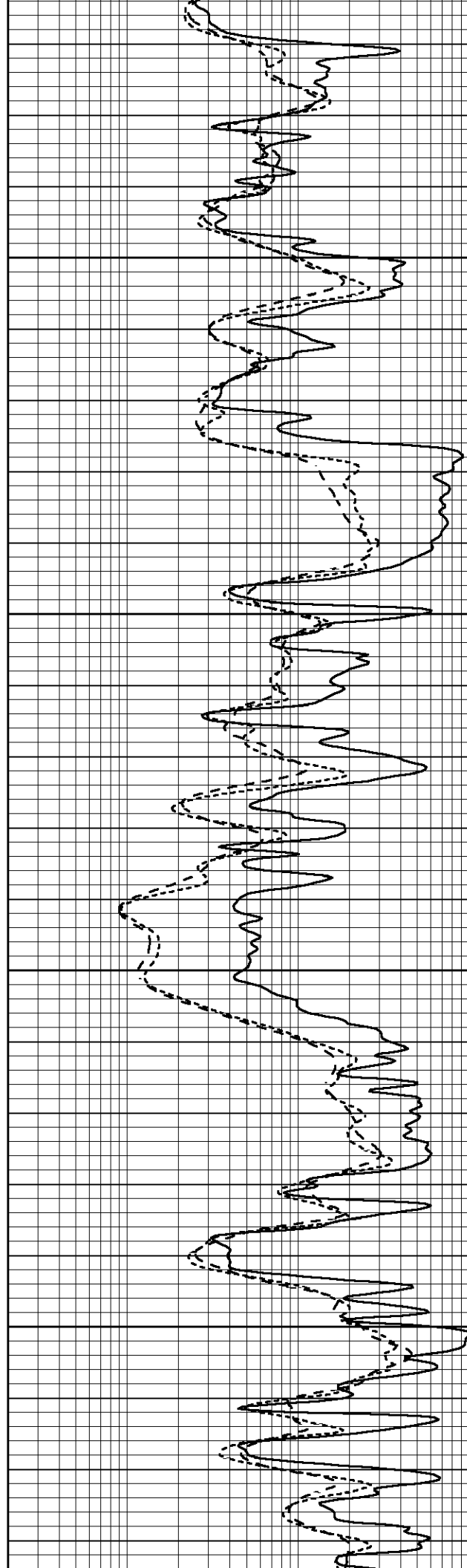


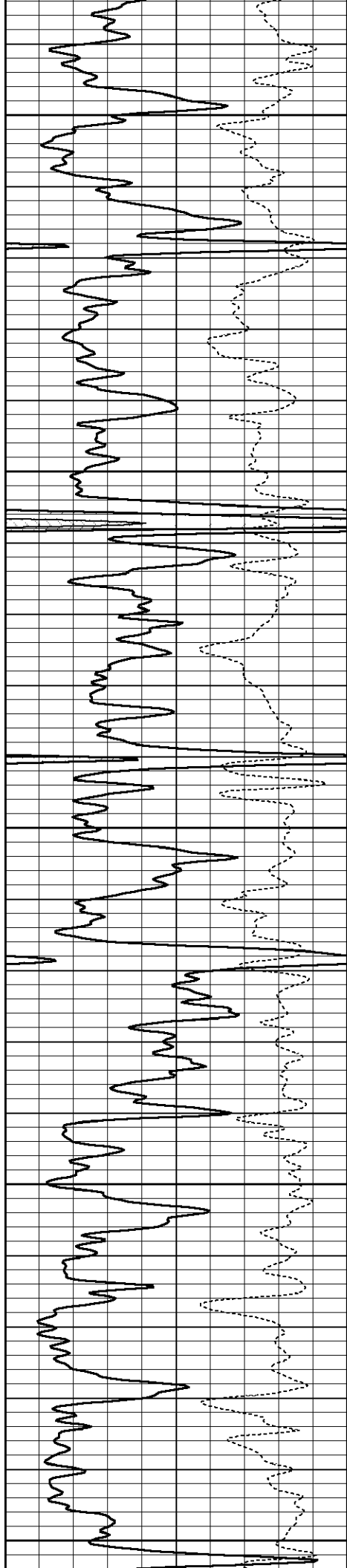
3800

3850

3900

3950





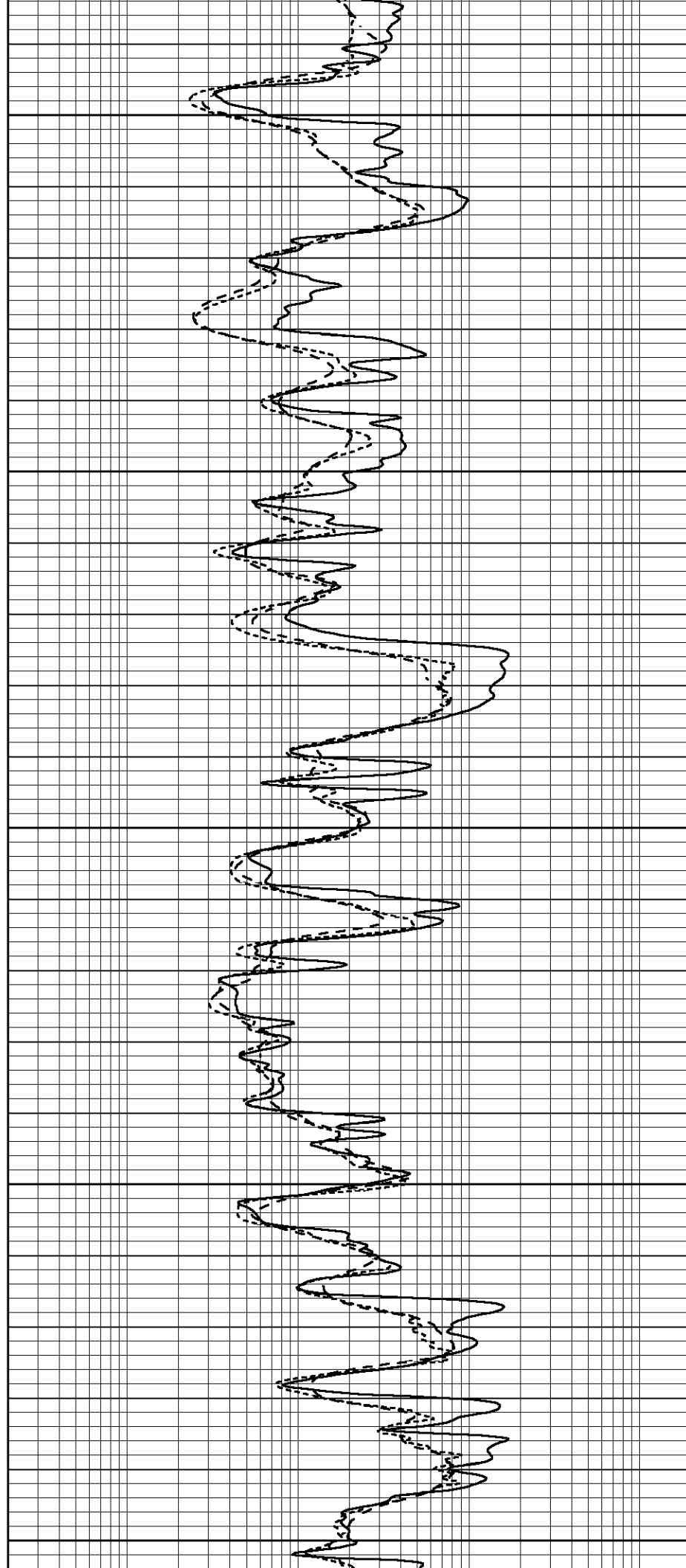
4000

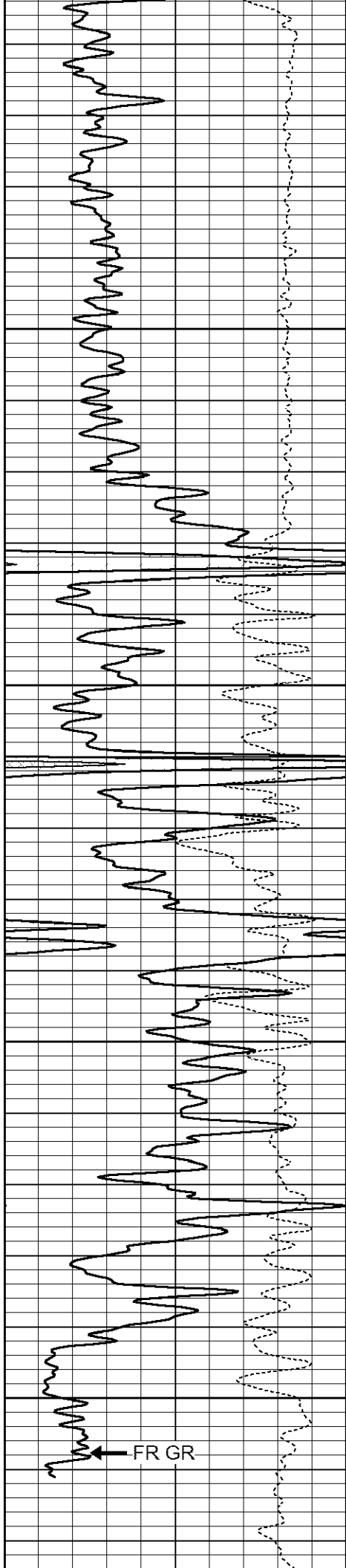
4050

4100

4150

4200



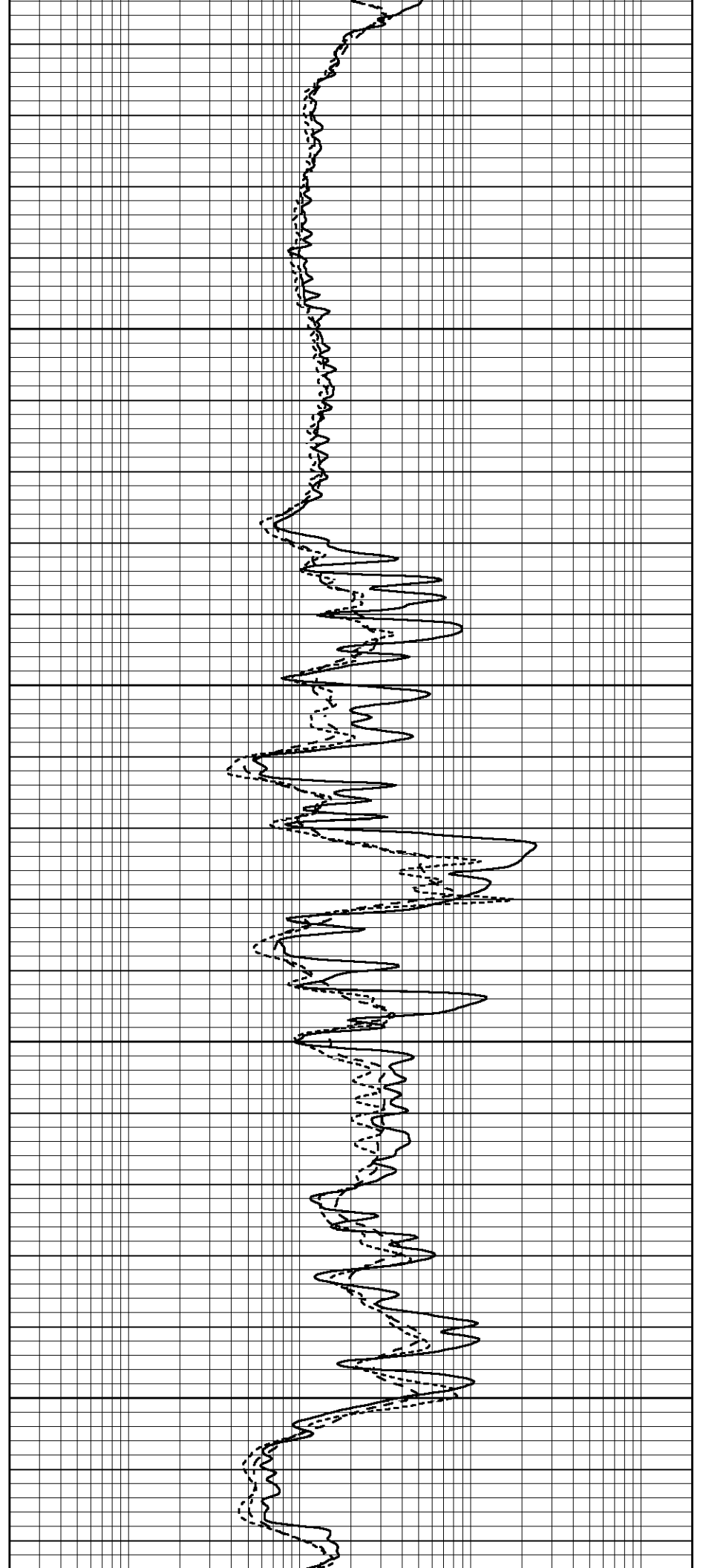


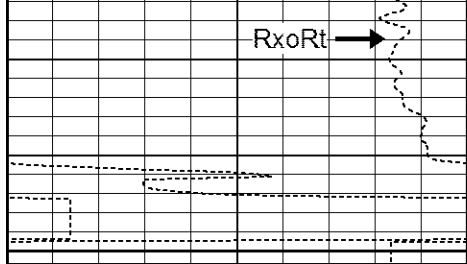
4250

4300

4350

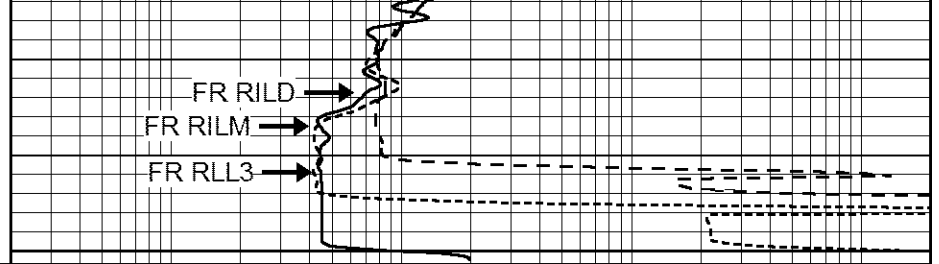
4400



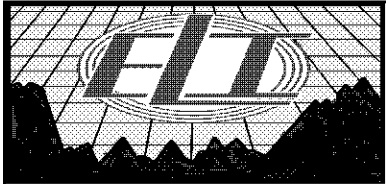


LTD 4444
4450

| | | |
|------|------------------|-----|
| 0 | GAMMA RAY (GAPI) | 150 |
| -250 | Rxo/Rt | 50 |



| | | |
|-----|--------------------------|------|
| 0.2 | SHALLOW GUARD (Ohm-m) | 2000 |
| 0.2 | MEDIUM INDUCTION (Ohm-m) | 2000 |
| 0.2 | DEEP INDUCTION (Ohm-m) | 2000 |

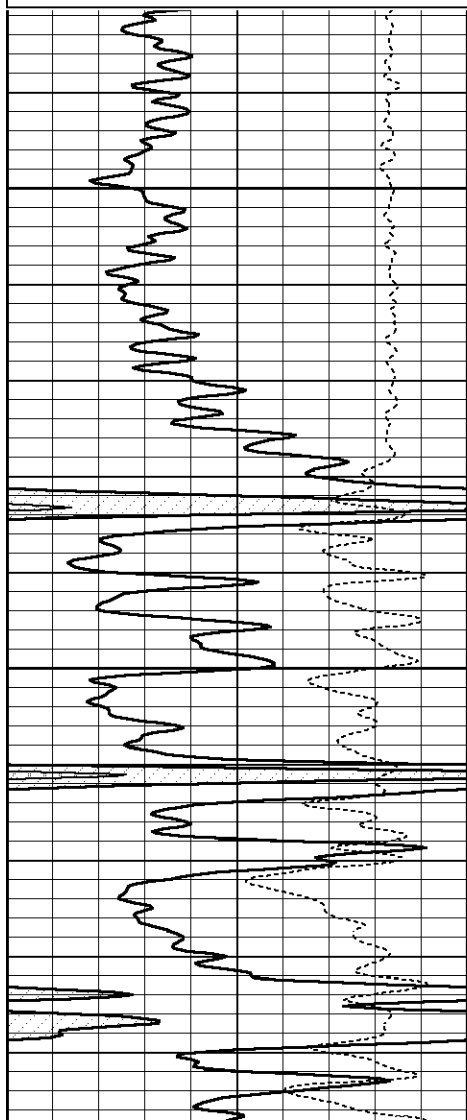


REPEAT SECTION

Database File 2504ddn8.db
 Dataset Pathname pass3.1
 Presentation Format _dil
 Dataset Creation Thu May 31 13:03:05 2018
 Charted by Depth in Feet scaled 1:240

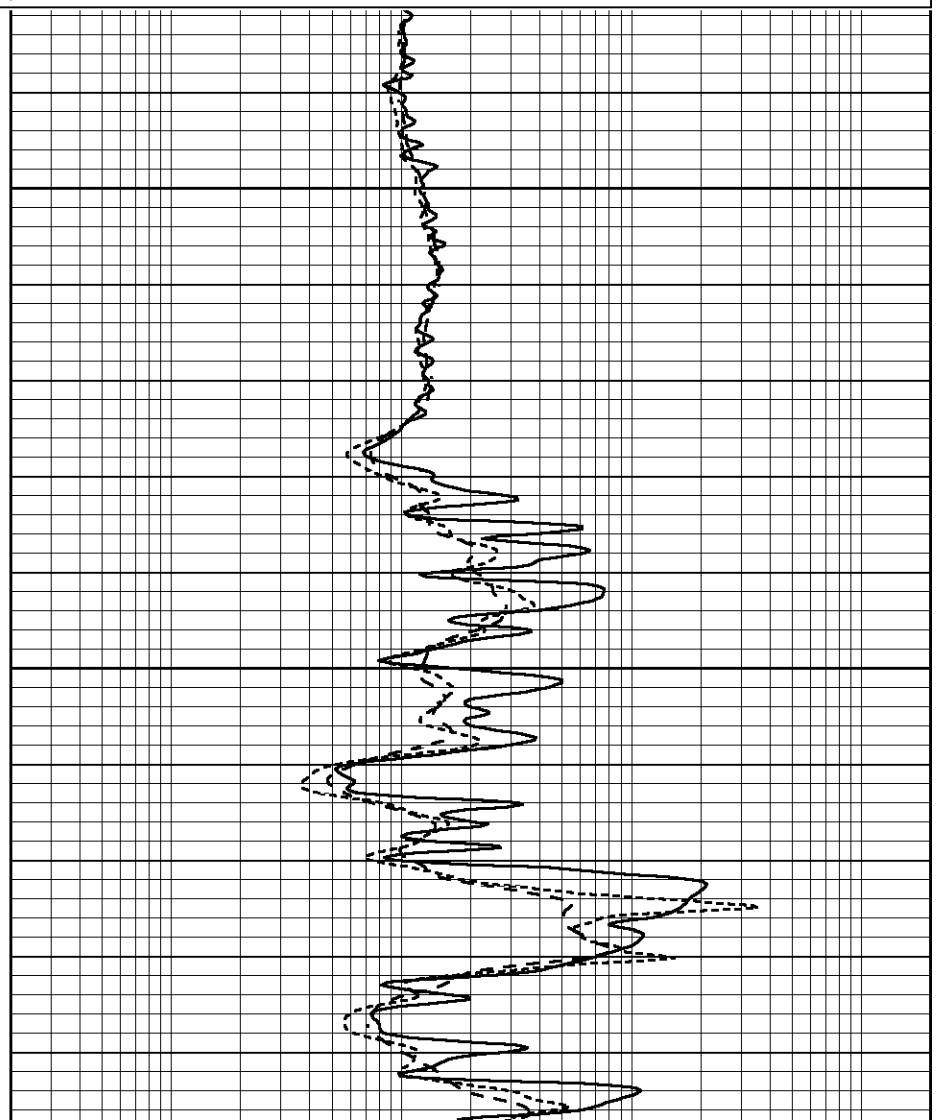
| | | |
|------|------------------|-----|
| 0 | GAMMA RAY (GAPI) | 150 |
| -250 | Rxo/Rt | 50 |

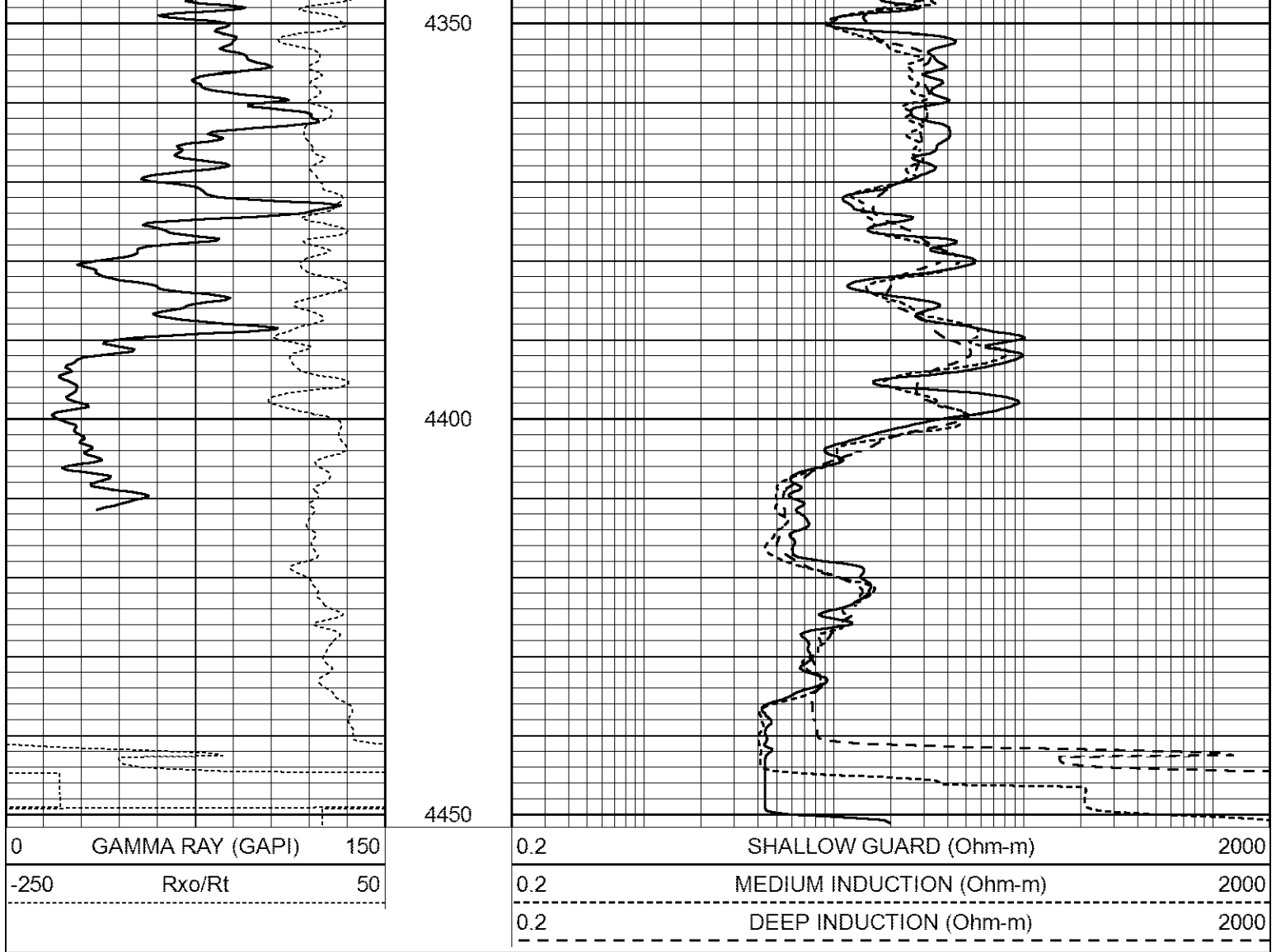
| | | |
|-----|--------------------------|------|
| 0.2 | SHALLOW GUARD (Ohm-m) | 2000 |
| 0.2 | MEDIUM INDUCTION (Ohm-m) | 2000 |
| 0.2 | DEEP INDUCTION (Ohm-m) | 2000 |



4250

4300





Calibration Report

Database File 2504ddn8.db
 Dataset Pathname pass4.1
 Dataset Creation Thu May 31 13:07:07 2018

Dual Induction Calibration Report

Serial-Model: FW1410-55-Probe
 Surface Cal Performed: Mon May 22 14:23:32 2017
 Downhole Cal Performed: Thu Mar 12 09:29:20 2015
 After Survey Verification Performed: Thu Mar 12 09:29:20 2015

Surface Calibration

| Loop: | Readings | | | References | | | Results | |
|--------|----------|-------|---|------------|---------|--------|---------|--------|
| | Air | Loop | V | Air | Loop | mmho/m | m | b |
| Deep | 0.011 | 0.656 | V | 1.000 | 400.000 | mmho/m | 618.595 | -5.524 |
| Medium | -0.000 | 0.731 | V | 1.000 | 464.000 | mmho/m | 632.856 | 1.197 |

| Internal: | Readings | | | References | | | Results | |
|-----------|----------|-------|---|------------|---------|--------|---------|--------|
| | Zero | Cal | V | Zero | Cal | mmho/m | m | b |
| Deep | 0.007 | 0.649 | V | 0.000 | 400.000 | mmho/m | 623.784 | -4.595 |
| Medium | 0.004 | 0.743 | V | 0.000 | 464.000 | mmho/m | 627.284 | -2.251 |

Downhole Calibration

| Readings | | References | | Results | |
|----------|-----|------------|-----|---------|----|
| Zero | Cal | Zero | Cal | m' | b' |

| | | | | | | | | |
|--------|--------|---------|--------|--------|----------|--------|-------|--------|
| Deep | -0.824 | 395.917 | mmho/m | -0.976 | 397.550 | mmho/m | 1.004 | -0.149 |
| Medium | 3.565 | 471.327 | mmho/m | 3.468 | 471.590 | mmho/m | 1.001 | -0.099 |
| LL3 | | 7.503 | V | | 2500.000 | Ohm-m | | |
| | | 0.001 | V | | 20.000 | Ohm-m | | |
| | | -7.481 | V | | 3745.000 | mmho-m | | |

| After Survey Verification | | | | | | | | |
|---------------------------|----------|-------|--------|---------|----------|--------|---------|-------|
| | Readings | | | Targets | | | Results | |
| | Zero | Cal | | Zero | Cal | | m' | b' |
| Deep | 0.000 | 0.000 | mmho/m | -0.824 | 395.917 | mmho/m | 1.000 | 0.000 |
| Medium | 0.000 | 0.000 | mmho/m | 3.565 | 471.327 | mmho/m | 1.000 | 0.000 |
| LL3 | | 0.000 | Ohm-m | | 1500.000 | Ohm-m | | |
| | | 0.000 | Ohm-m | | 20.000 | Ohm-m | | |
| | | 0.000 | mmho-m | | 3745.000 | mmho-m | | |

Compensated Neutron Calibration Report

| | |
|----------------|-----------|
| Serial Number: | 080621PMC |
| Tool Model: | NABORS |

| PRE-SURVEY VERIFICATION | | | | |
|-------------------------|----------|----------|--------|----|
| Detector | Readings | Measured | Target | |
| Short Space | cps | | | |
| Long Space | cps | pu | | pu |

| POST-SURVEY VERIFICATION | | | | |
|--------------------------|----------|----------|--------|----|
| Detector | Readings | Measured | Target | |
| Short Space | cps | | | |
| Long Space | cps | pu | | pu |

Gamma Ray Calibration Report

| | |
|---------------------|--------------------------|
| Serial Number: | 070558 |
| Tool Model: | Probe1 |
| Performed: | Tue Jul 25 12:16:33 2017 |
| Calibrator Value: | 1.0 GAPI |
| Background Reading: | 0.0 cps |
| Calibrator Reading: | 1.0 cps |
| Sensitivity: | 0.4000 GAPI/cps |