



**COMPENSATED  
DENSITY/NEUTRON  
LOG**

Company **TRIPLE CROWN OPERATING LLC.**  
 Well **LANE TRUST #2-3**  
 Field  
 County **NESS** State **KANSAS**

Location: **API # : 15-135-26007-0000**  
**732' FNL & 965' FWL**  
 Permanent Datum **GROUND LEVEL Elevation 2317**  
 Log Measured From **KELLY BUSHING 5' A.G.L**  
 Drilling Measured From **KELLY BUSHING**  
 SEC 3 TWP 20S RGE 24W  
 Other Services **DIL**  
 Elevation **K.B. 2322  
D.F. 2320  
G.L. 2317**

Date	5/31/18
Run Number	ONE
Depth Driller	4445
Depth Logger	4444
Bottom Logged Interval	4420
Top Log Interval	3700
Casing Driller	8 5/8" @ 218
Casing Logger	218
Bit Size	7 7/8
Type Fluid in Hole	CHEMICAL MUD
Density / Viscosity	9.3/47
PH / Fluid Loss	10.0/8.8
Source of Sample	FLOWLINE
Rm @ Meas. Temp	.65 @ 90F
Rmt @ Meas. Temp	.48 @ 90F
Rmc @ Meas. Temp	.78 @ 90F
Source of Rmf / Rmc	MEASUREMENT
Rm @ BHT	.48 @ 120F
Time Circulation Stopped	2 HOURS
Time Logger on Bottom	////
Maximum Recorded Temperature	
Equipment Number	3802
Location	HAYS, KANSAS
Recorded By	JASON CAPPELLUCCI
Witnessed By	SEAN DEENIHAN

<<< Fold Here >>>

All interpretations are opinions based on inferences from electrical or other measurements and we cannot and do not guarantee the accuracy or correctness of any interpretation, and we shall not, except in the case of gross or willful negligence on our part, be liable or responsible for any loss, costs, damages, or expenses incurred or sustained by anyone resulting from any interpretation made by any of our officers, agents or employees. These interpretations are also subject to our general terms and conditions set out in our current Price Schedule.

**Comments**

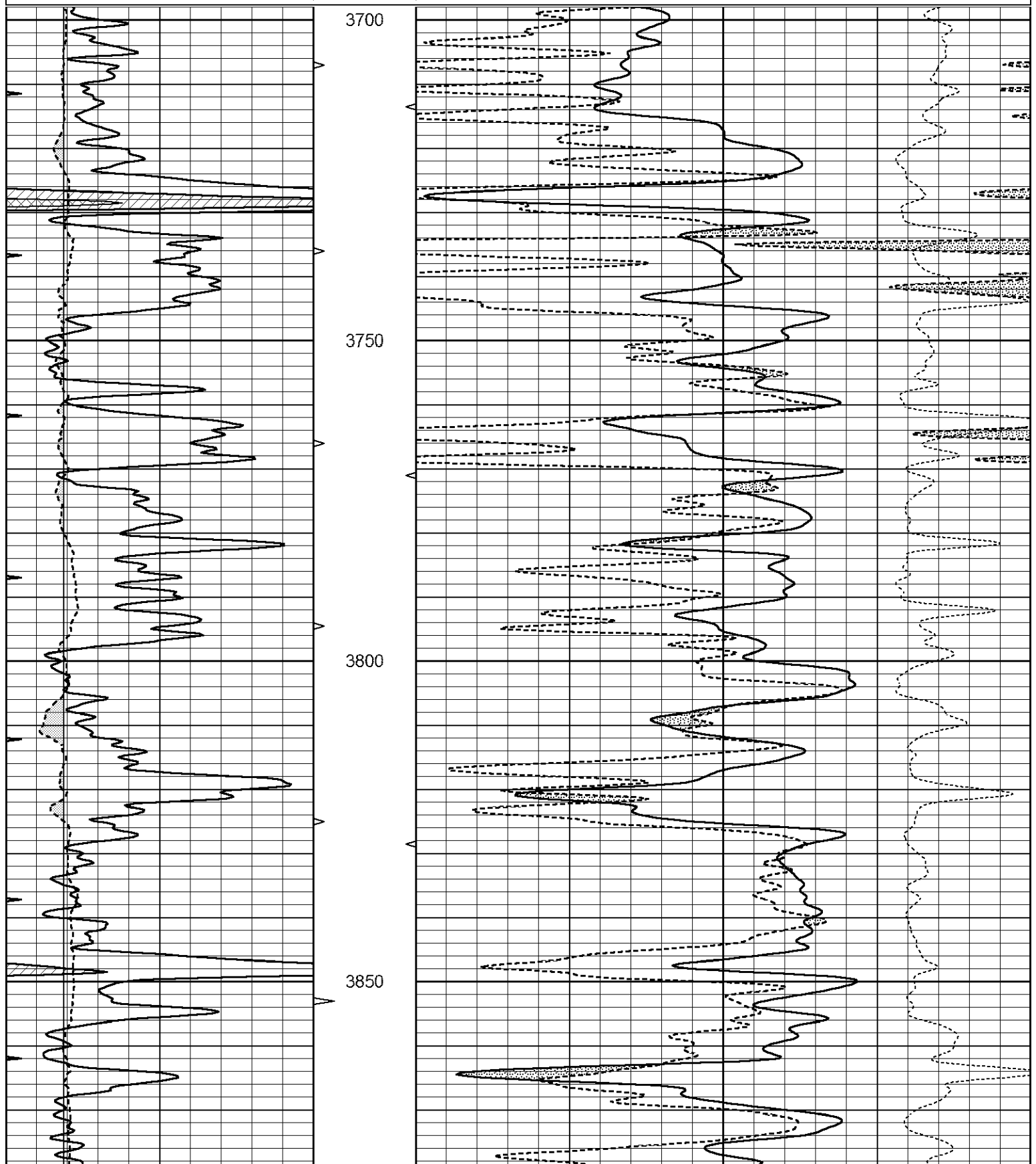
THANK YOU FOR USING ELI WIRELINE SERVICES, HAYS, KS. ( 785 ) 628-6395  
 DIRECTIONS  
 NESS CITY, KS. - 6 SOUTH TO RD. 60 - 3 1/2 WEST - SOUTH INTO

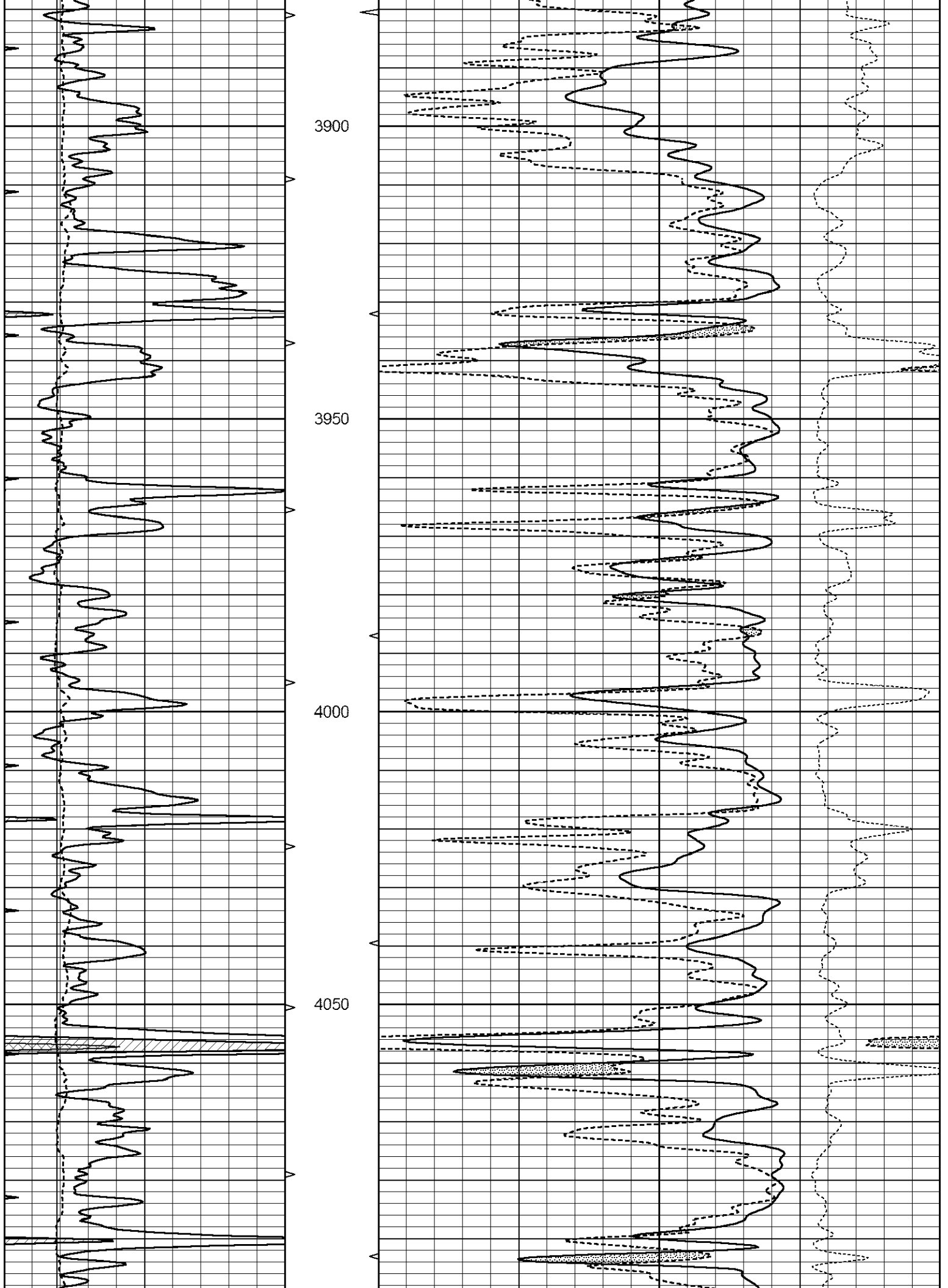


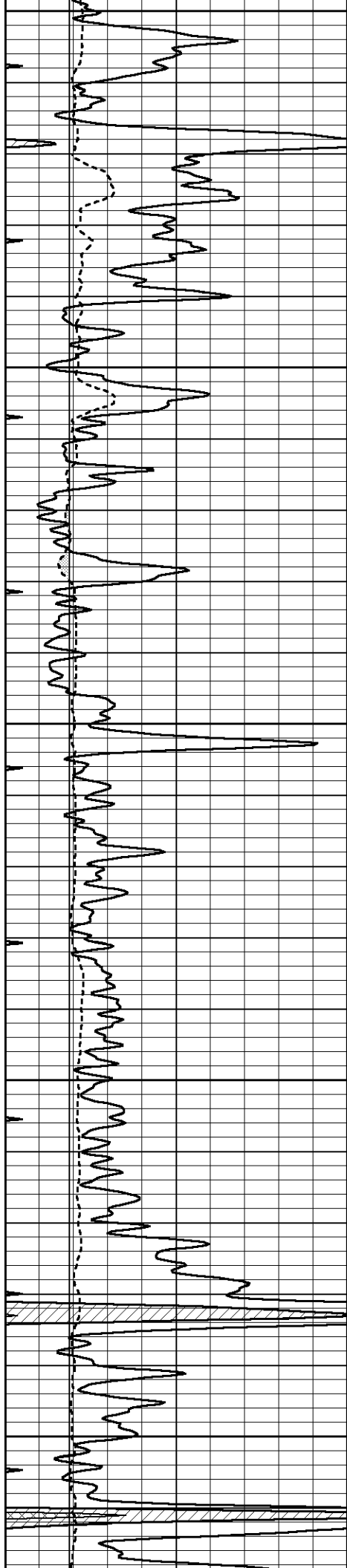
# MAIN SECTION

Database File 2504ddn8.db  
 Dataset Pathname pass4.1  
 Presentation Format \_den\_neu  
 Dataset Creation Thu May 31 13:07:07 2018  
 Charted by Depth in Feet scaled 1:240

0	GAMMA RAY (GAPI)	150	AVTX	30	COMPENSATED DENSITY (pu)	-10	
6	CALIPER (in)	16	10 (ft3)	0	30	COMPENSATED NEUTRON (pu)	-10
0	MINMK	20	BVTX		-0.25	CORRECTION (g/cc)	0.25
			0 (ft3)	10			







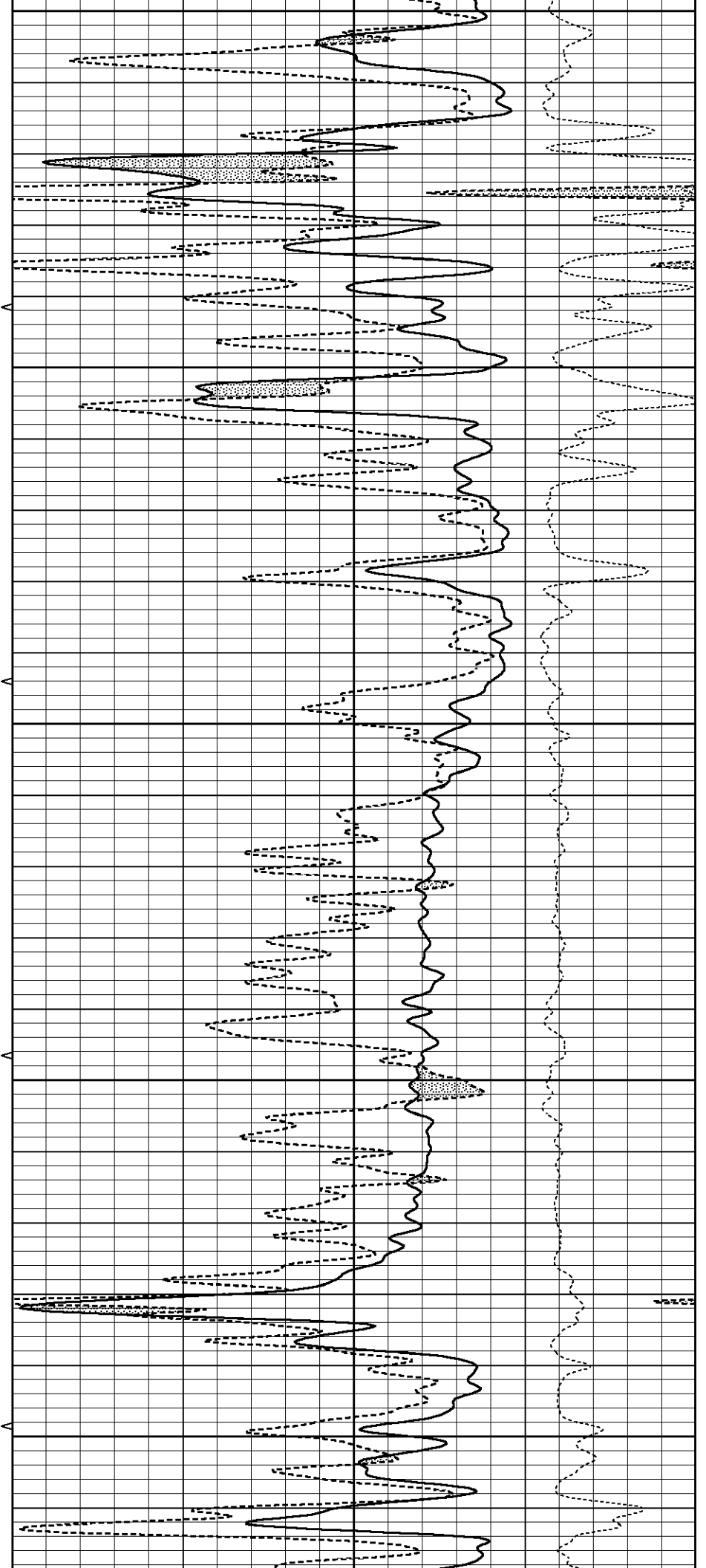
4100

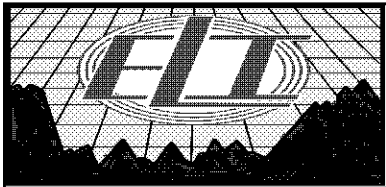
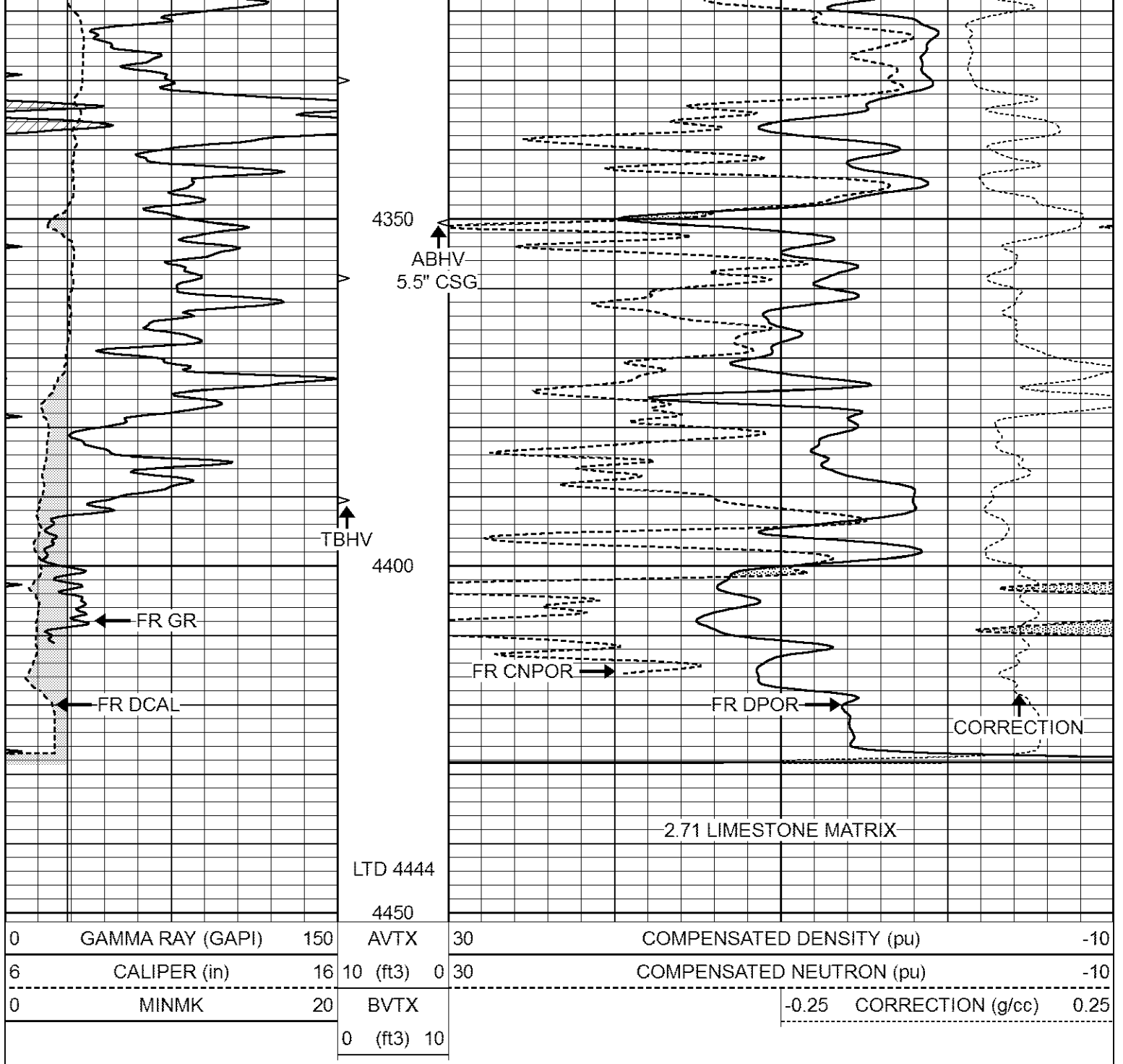
4150

4200

4250

4300

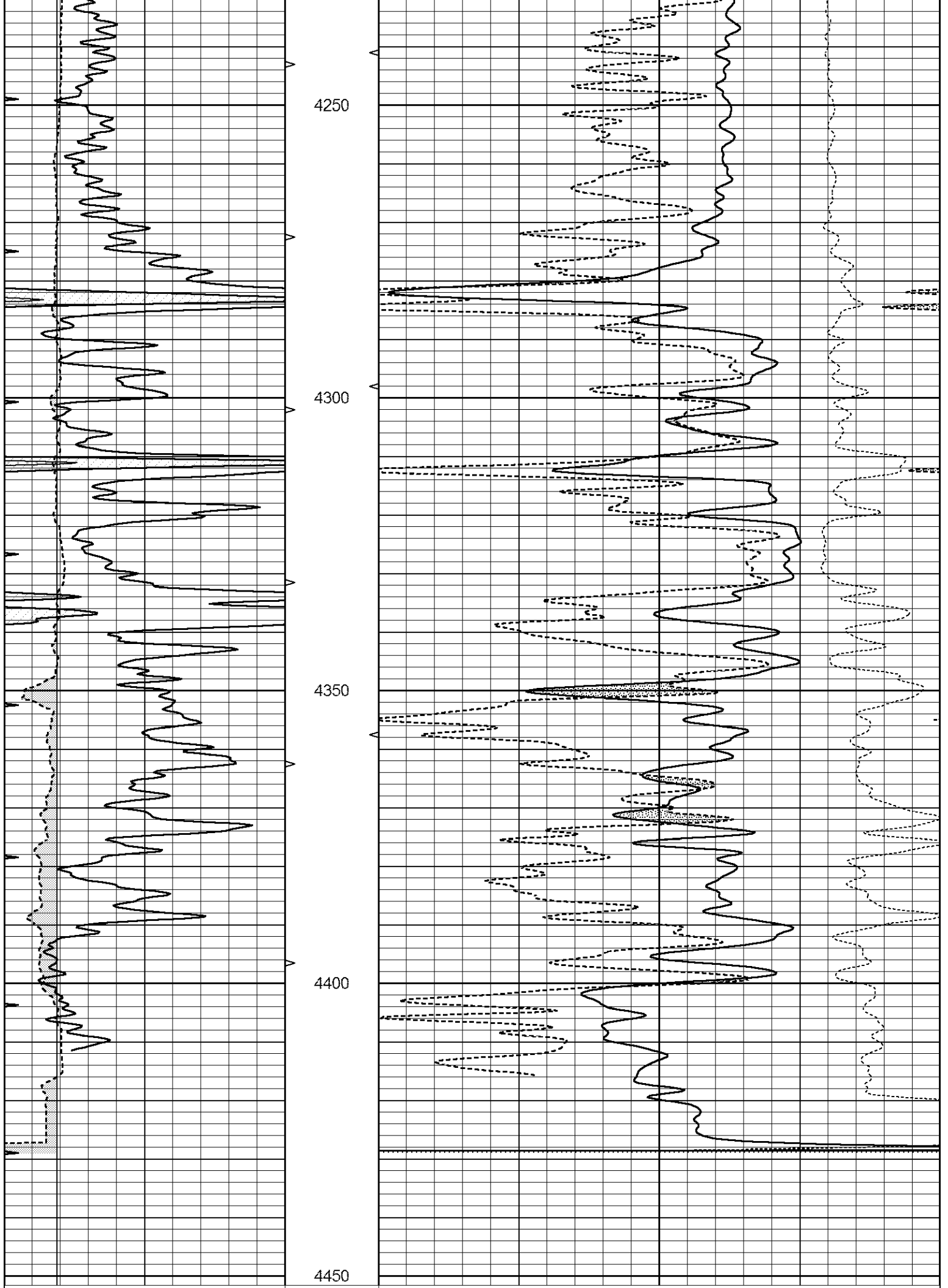




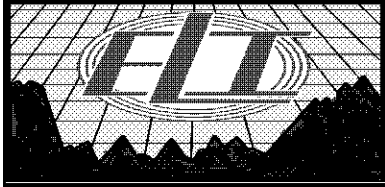
# REPEAT SECTION

Database File 2504ddn8.db  
 Dataset Pathname pass3.1  
 Presentation Format \_den\_neu  
 Dataset Creation Thu May 31 13:03:05 2018  
 Charted by Depth in Feet scaled 1:240

0	GAMMA RAY (GAPI)	150	AVTX	30	COMPENSATED DENSITY (pu)	-10
6	CALIPER (in)	16	10 (ft3)	0 30	COMPENSATED NEUTRON (pu)	-10
0	MINMK	20	BVTX		-0.25 CORRECTION (g/cc)	0.25
			0 (ft3)	10		



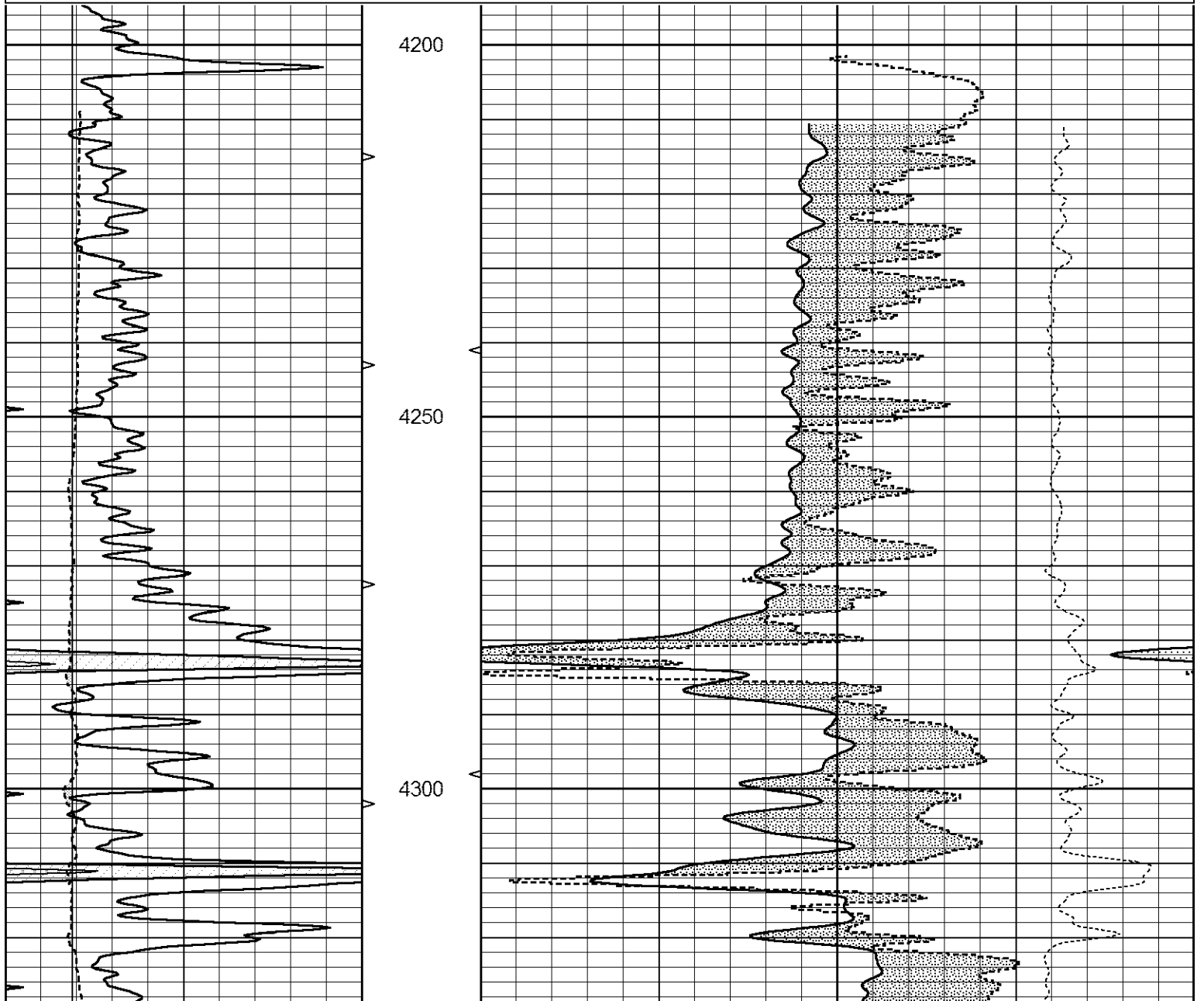
0	GAMMA RAY (GAPI)	150	AVTX	30	COMPENSATED DENSITY (pu)	-10
6	CALIPER (in)	16	10 (ft3)	0 30	COMPENSATED NEUTRON (pu)	-10
0	MINMK	20	BVTX		-0.25 CORRECTION (g/cc)	0.25
			0 (ft3)	10		

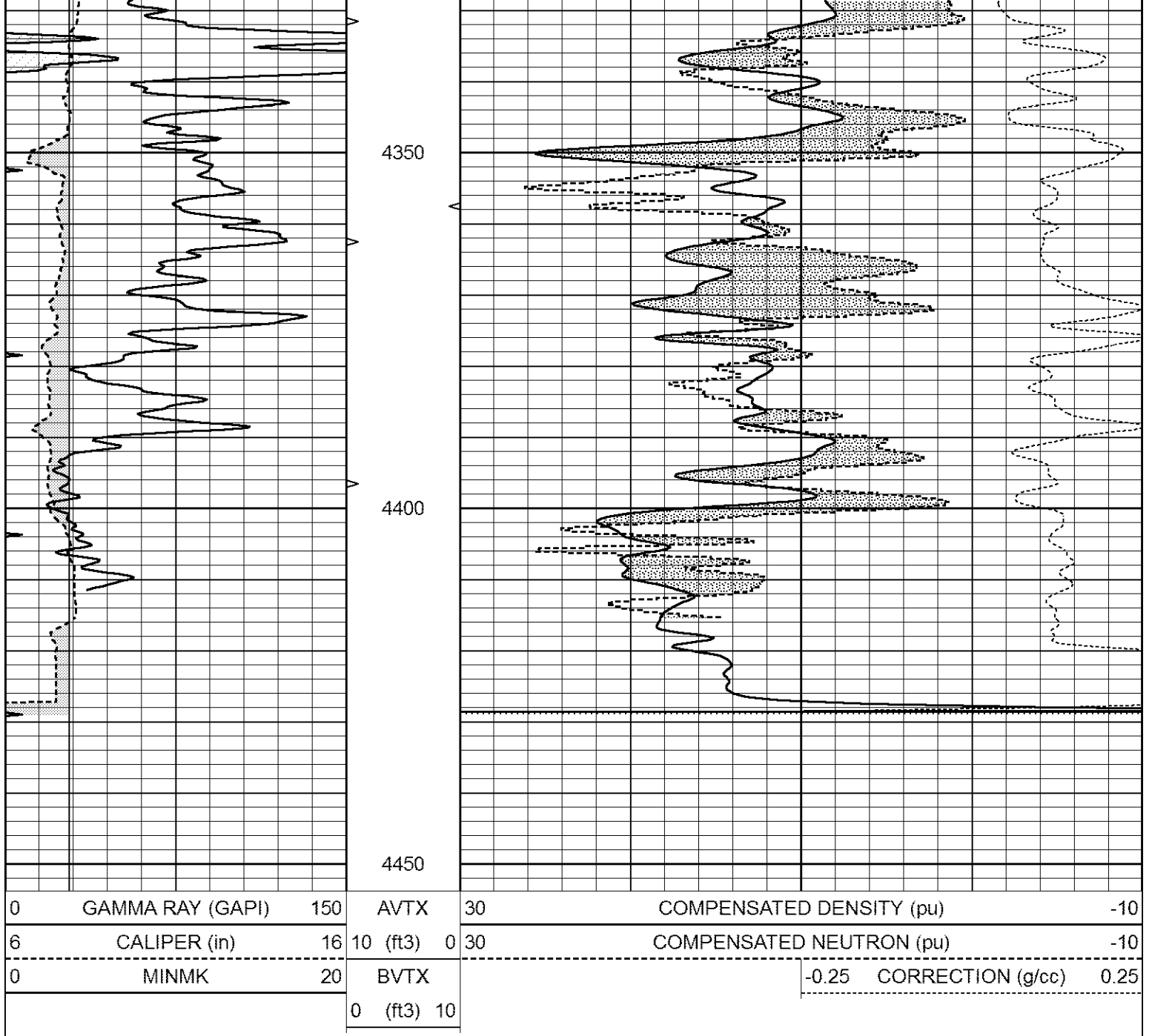


# DOLOMITE MATRIX

Database File 2504ddn8.db  
 Dataset Pathname pass3.1.1d  
 Presentation Format \_den\_neu  
 Dataset Creation Thu May 31 12:34:27 2018  
 Charted by Depth in Feet scaled 1:240

0	GAMMA RAY (GAPI)	150	AVTX	30	COMPENSATED DENSITY (pu)	-10
6	CALIPER (in)	16	10 (ft3)	0 30	COMPENSATED NEUTRON (pu)	-10
0	MINMK	20	BVTX		-0.25 CORRECTION (g/cc)	0.25
			0 (ft3)	10		





### Calibration Report

Database File 2504ddn8.db  
 Dataset Pathname pass4.1  
 Dataset Creation Thu May 31 13:07:07 2018

### Dual Induction Calibration Report

Serial-Model: FW1410-55-Probe  
 Surface Cal Performed: Mon May 22 14:23:32 2017  
 Downhole Cal Performed: Thu Mar 12 09:29:20 2015  
 After Survey Verification Performed: Thu Mar 12 09:29:20 2015

#### Surface Calibration

Loop:	Readings			References			Results	
	Air	Loop	V	Air	Loop	mmho/m	m	b
Deep	0.011	0.656	V	1.000	400.000	mmho/m	618.595	-5.524
Medium	-0.000	0.731	V	1.000	464.000	mmho/m	632.856	1.197
Internal:	Zero	Cal		Zero	Cal		m	b

Deep	0.007	0.649	V	0.000	400.000	mmho/m	623.784	-4.595
Medium	0.004	0.743	V	0.000	464.000	mmho/m	627.284	-2.251

Downhole Calibration								
	Readings			References			Results	
	Zero	Cal		Zero	Cal		m'	b'
Deep	-0.824	395.917	mmho/m	-0.976	397.550	mmho/m	1.004	-0.149
Medium	3.565	471.327	mmho/m	3.468	471.590	mmho/m	1.001	-0.099
LL3		7.503	V		2500.000	Ohm-m		
		0.001	V		20.000	Ohm-m		
		-7.481	V		3745.000	mmho-m		

After Survey Verification								
	Readings			Targets			Results	
	Zero	Cal		Zero	Cal		m'	b'
Deep	0.000	0.000	mmho/m	-0.824	395.917	mmho/m	1.000	0.000
Medium	0.000	0.000	mmho/m	3.565	471.327	mmho/m	1.000	0.000
LL3		0.000	Ohm-m		1500.000	Ohm-m		
		0.000	Ohm-m		20.000	Ohm-m		
		0.000	mmho-m		3745.000	mmho-m		

Compensated Neutron Calibration Report

Serial Number: 080621PMC  
Tool Model: NABORS

PRE-SURVEY VERIFICATION				
Detector	Readings	Measured	Target	
Short Space	cps			
Long Space	cps	pu		pu

POST-SURVEY VERIFICATION				
Detector	Readings	Measured	Target	
Short Space	cps			
Long Space	cps	pu		pu

Gamma Ray Calibration Report

Serial Number: 070558  
Tool Model: Probe1  
Performed: Tue Jul 25 12:16:33 2017

Calibrator Value: 1.0 GAPI

Background Reading: 0.0 cps  
Calibrator Reading: 1.0 cps

Sensitivity: 0.4000 GAPI/cps